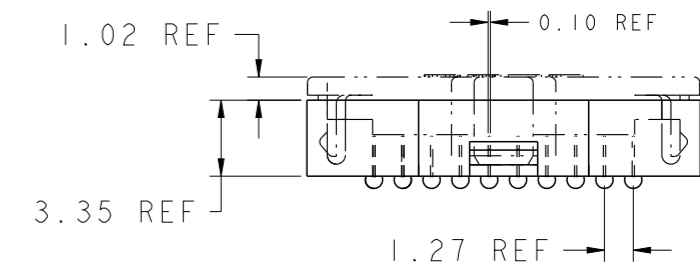
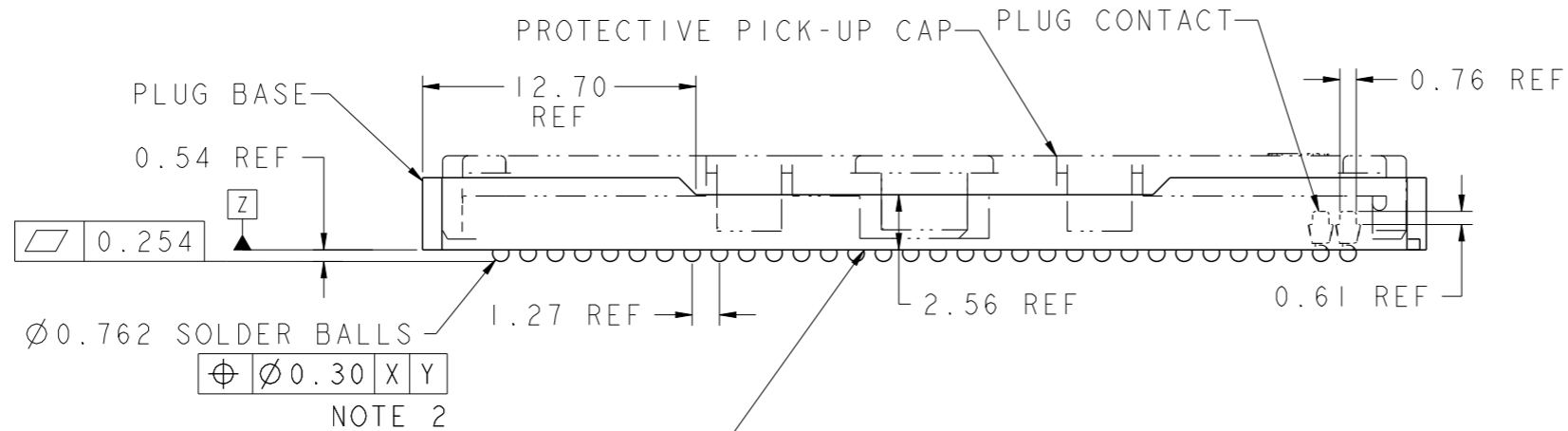
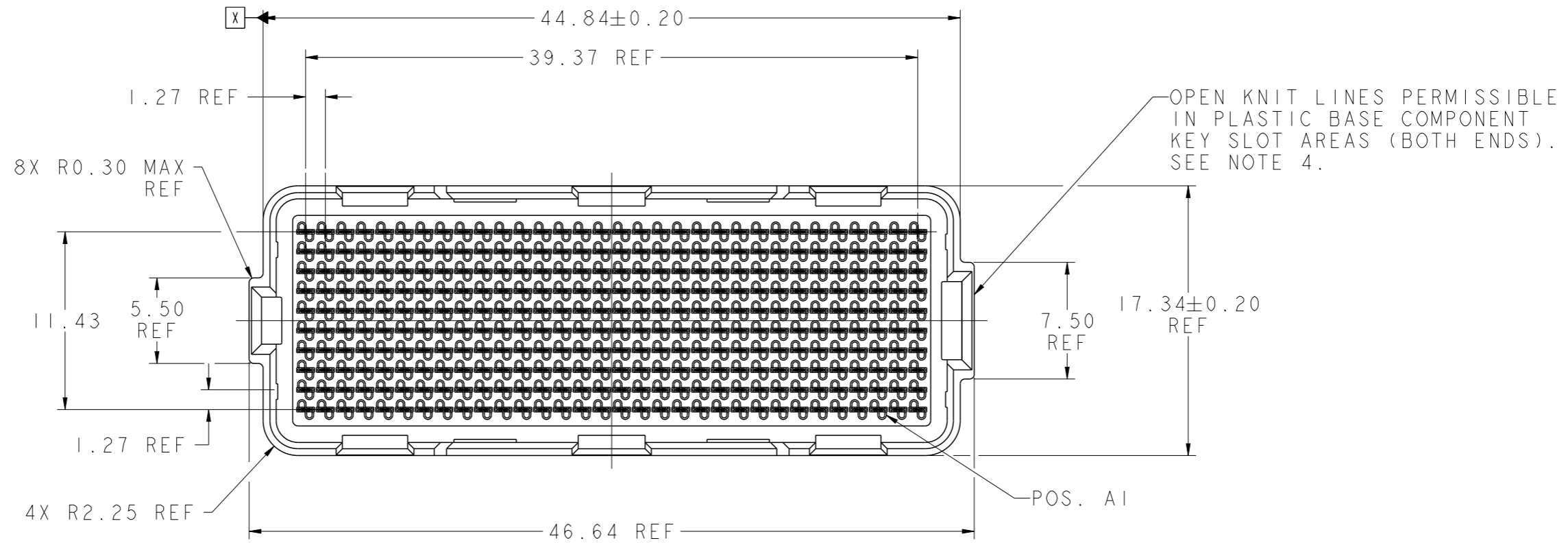


PRODUCT NUMBER

SEE SHEET 5



CONTINUOUS OPEN KNIT LINE CRACKS (TRAVERSING THE ENTIRE BODY LENGTH OF THE CONNECTOR) WHICH CAUSE CRITICAL-TO-FUNCTION DIMENSIONAL CHANGES THAT AFFECT THE CONNECTORS MECHANICAL ALIGNMENT FEATURES ARE NOT PERMISSIBLE. SEE NOTE 4.

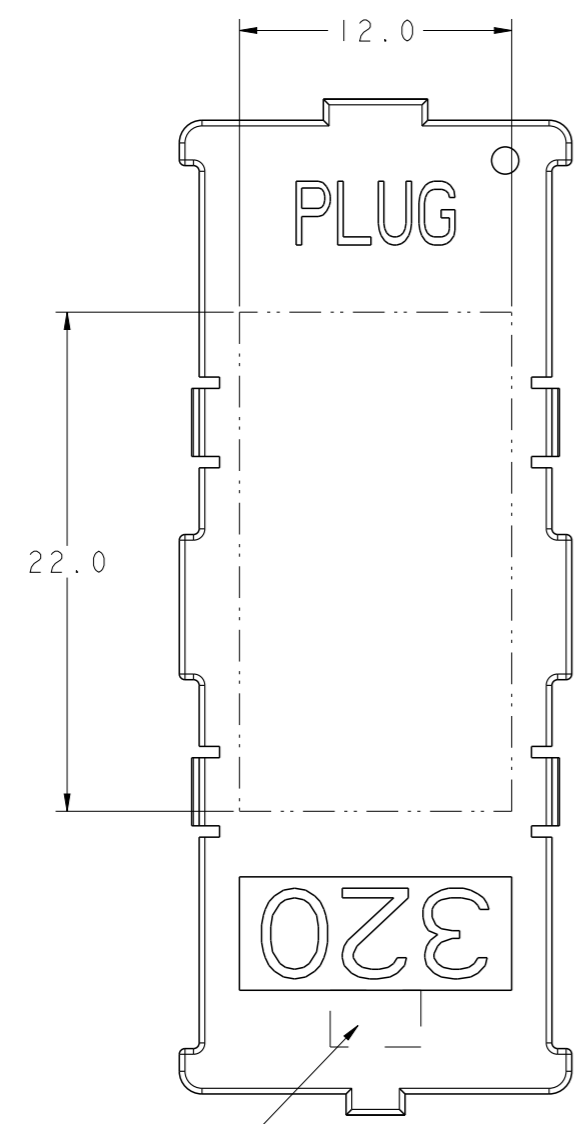
spec ref	-	dr	Dave Horchler	2013/01/22	projection	mm	size	A3	scale	3:1
tolerance std	ASME Y14.5	eng	M Srinivasan	2013/07/15			ecn no	REL-15184-1	rel level	Released
TOLERANCES UNLESS OTHERWISE SPECIFIED		chr	-	apppr						
surface		linear	0.X	±0.3		0mm PLUG ASSEMBLY 10 x 32 = 320 POSITIONS	dwg no	10123981	rev	B
			0.XX	±0.13						
			0.XXX	±0.051						
ASME Y14.5	angular	0°	±0°		www.fci.com	cat. no.	Product - Customer Drw		sheet 1 of 5	



Copyright FCI.

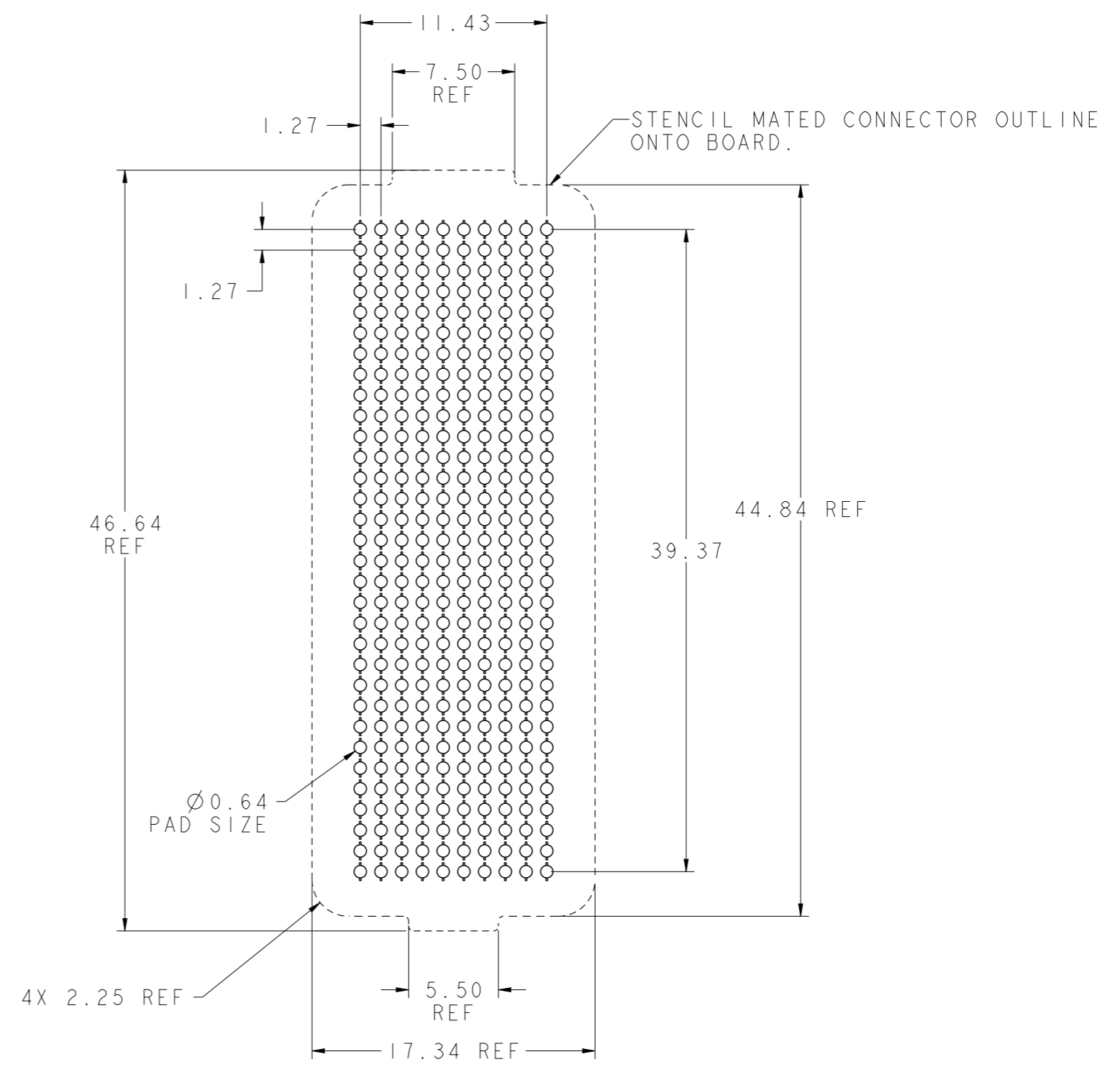
PRODUCT NUMBER

SEE SHEET 5



NOTE 6

FLAT AREA FOR PICK-UP CAP

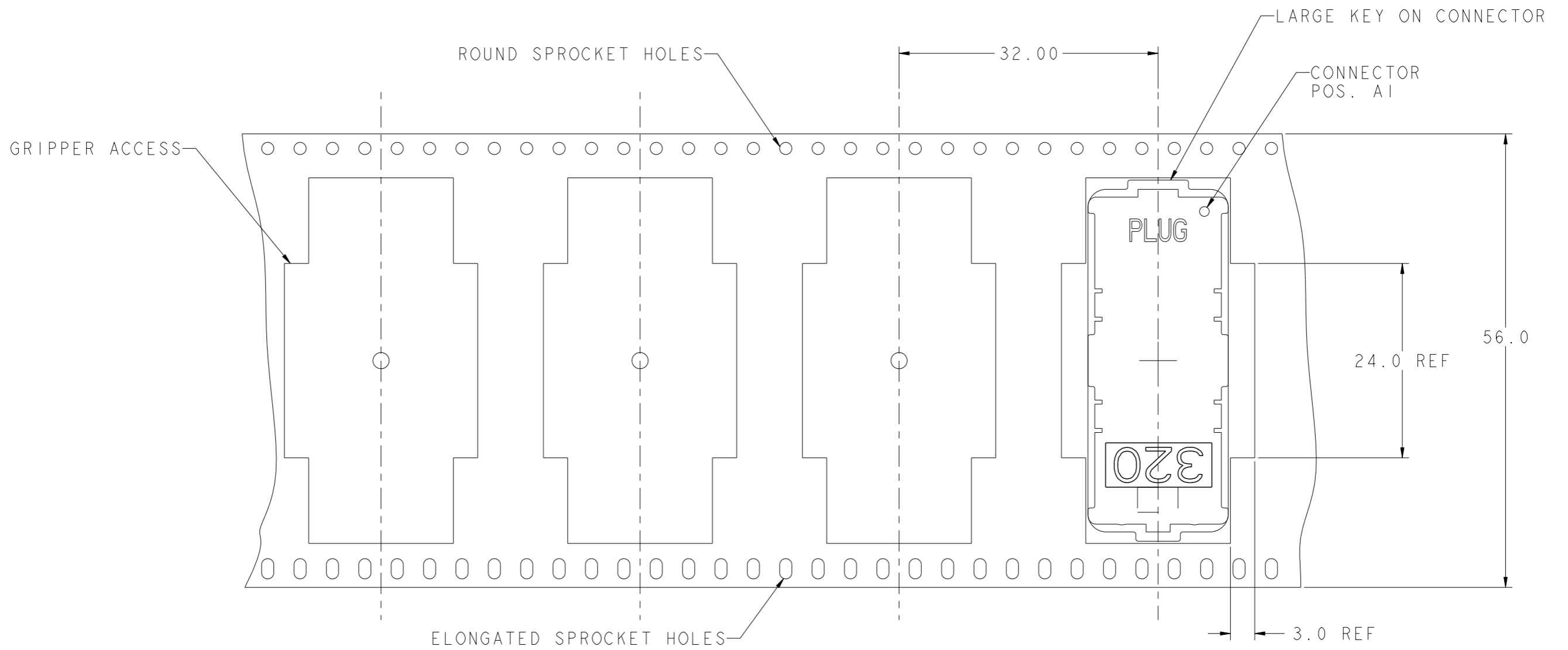


BOARD PATTERN

spec ref	-	dr	Dave Horchler	2013/01/22	projection	mm	size	A3	scale	3:1
tolerance std	ASME Y14.5	eng	M Srinivasan	2013/07/15			ecn no	ELX-V-15184-1	rel level	Released
TOLERANCES UNLESS OTHERWISE SPECIFIED		chr	-	apppr						
surface	✓	linear	0.X	±0.3		0mm PLUG ASSEMBLY 10 x 32 = 320 POSITIONS	dwg no	10123981	rev	B
			0.XX	±0.13						
			0.XXX	±0.051						
ASME Y14.5	angular	0°	±0°	www.fci.com	cat. no.	Product - Customer Drw	sheet 2 of 5			

Copyright FCI. FCI

PRODUCT NUMBER  
SEE SHEET 5



DIE - REEL DIRECTION



TAPE & REEL PACKAGING  
PER EIA 481 - 3  
SCALE NONE

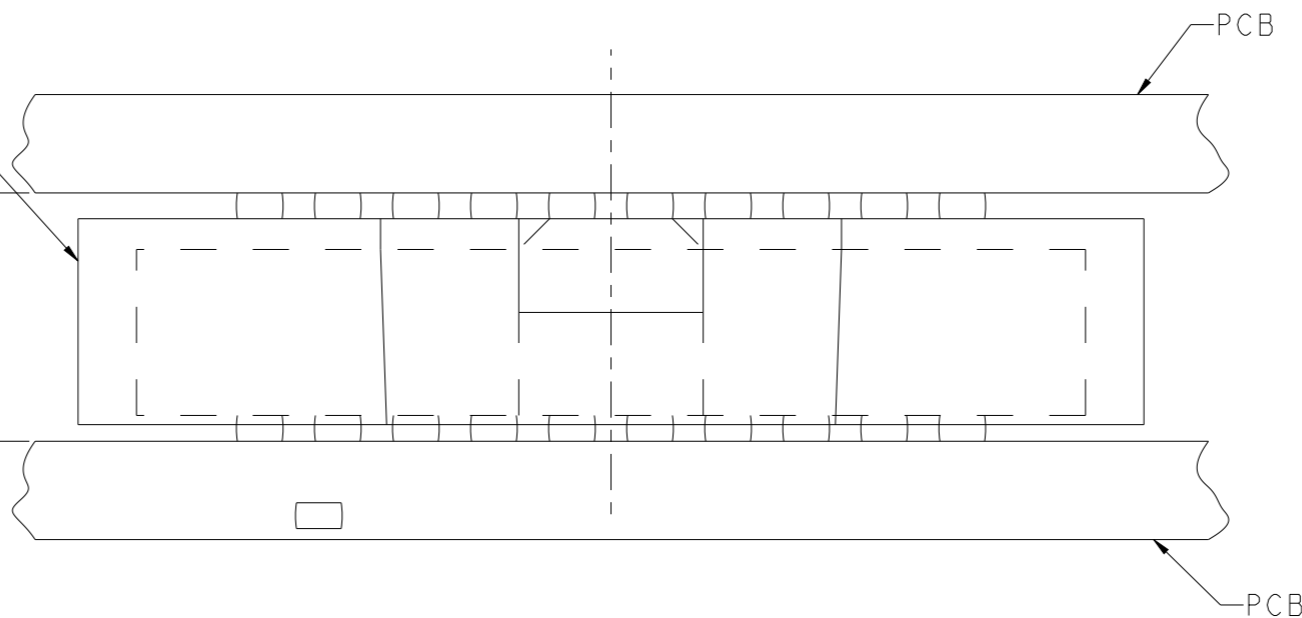
spec ref -		dr	Dave Horchler	2013/01/22	projection	mm	size	A3	scale	3:1
tolerance std ASME Y14.5		TOLERANCES UNLESS OTHERWISE SPECIFIED			eng	M Srinivasan	2013/07/15	ecn no		ELX-V-15184-1
		chr	-		product family		MEG-ARRAY		rel level	
		appr	R Marshall	2013/07/15					Released	
surface	linear	0.X	±0.3			0mm PLUG ASSEMBLY 10 x 32 = 320 POSITIONS		dwg no 10123981	rev B	
		0.XX	±0.13							
0.XXX	±0.051									
ASME Y14.5	angular	0°	±0°		www.fci.com	cat. no.	Product - Customer Drw		sheet 3 of 5	

PRODUCT NUMBER

SEE SHEET 5

PLUG ASSY  
P/N 10123981-XXX

DIM "A" REF  
MATED HEIGHT  
AFTER REFLOW  
SEE NOTE 3



MATED HEIGHT AFTER REFLOW IS BASED ON Ø0.64mm PAD (METAL-DEFINED)  
AND 0.13mm SOLDER PASTE STENCIL THICKNESS. SEE NOTE 3

**END VIEW - MATED CONNECTORS**  
SCALE NONE



Copyright FCI.

spec ref -		dr	Dave Horchler	2013/01/22	projection	mm	size	A3	scale	3:1
tolerance std	ASME Y14.5	TOLERANCES UNLESS OTHERWISE SPECIFIED			eng	M Srinivasan	2013/07/15	ecn no ELX-V-15184-1		
surface		linear	0.X	±0.3	chr	-	rel level			
ASME Y14.5		angular	0°	±0°	appr	R Marshall	2013/07/15	Released		
		FCI		0mm PLUG ASSEMBLY		dwg no		10123981		rev
		www.fci.com		10 x 32 = 320 POSITIONS						B
		cat. no.		Product - Customer Drw		sheet 4 of 5				

PRODUCT NUMBER	PICK-UP CAP (NATURAL OR BLACK IN COLOR)	CONTACT PLATING AND THICKNESS	SOLDER BALL	NOTES
10123981-002	YES	15u" (.38um) Au	SnPb	
10123981-002LF	YES	15u" (.38um) Au	LEAD FREE	4 AND 5
10123981-092	YES	15u" (.38um) GXT	SnPb	
10123981-092LF	YES	15u" (.38um) GXT	LEAD FREE	4 AND 5
10123981-102	YES	30u" (.76um) Au	SnPb	
10123981-102LF	YES	30u" (.76um) Au	LEAD FREE	4 AND 5
10123981-192	YES	30u" (.76um) GXT	SnPb	
10123981-192LF	YES	30u" (.76um) GXT	LEAD FREE	4 AND 5
10123981-202	YES	50u" (1.27um) Au SPECIAL	SnPb	8
10123981-202LF	YES	50u" (1.27um) Au SPECIAL	LEAD FREE	4, 5 AND 8
10123981-292	YES	50u" (1.27um) GXT SPECIAL	SnPb	8
10123981-292LF	YES	50u" (1.27um) GXT SPECIAL	LEAD FREE	4, 5 AND 8
10123981-A02	YES	30u" (.76um) Au SPECIAL	SnPb	CUSTOMER SPECIAL
10123981-A02LF	YES	30u" (.76um) Au SPECIAL	LEAD FREE	CUSTOMER SPECIAL

NOTES:

- ① MATERIAL:  
HOUSING: LCP-NATURAL  
CONTACT: COPPER ALLOY  
  
PLATING:  
CONTACT: 15µ" (0.38µm) GXT OVER Ni UNDERPLATE  
SOLDER BALL: LEAD FREE  
95.5Sn/4Ag/0.5Cu
- ② SOLDER BALLS WILL NOT HAVE PERFECT SPHERICAL SHAPES DUE TO REFLOW ATTACHMENT.
- ③ MATED HEIGHT EFFECTED BY CUSTOMER'S PCB PAD SIZE, PLATING, SOLDER REFLOW PROFILE, & SOLDER PASTE.
- ④ FOR PROPER APPLICATION FOLLOW FCI APPLICATION SPECIFICATION GS-20-033 LEAD FREE SOLDER BALLS WILL NOT SOLDER PROPERLY IN A LEADED SOLDER PROCESS DUE TO A HIGHER REFLOW TEMPERATURE. LEAD FREE PRODUCT IS THEREFORE NOT BACKWARDS COMPATIBLE WITH LEADED OR SOME SOLDERING APPLICATIONS. REFERENCE FCI APPLICATION SPECIFICATION.
- ⑤ THIS PRODUCT MEETS EUROPEAN UNION DIRECTIVES AND OTHER COUNTRY REGULATIONS AS DESCRIBED IN GS-47-0004 PRODUCT MEETING THIS DIRECTIVE IS IDENTIFIED IN THE LOT CODE NUMBER MARKED ON EACH PART BY HAVING AN "X" IN THE SEVENTH CHARACTER POSITION.
- ⑥ CURRENT COMPANY LOGO TO BE VISIBLE IN APPROXIMATE AREA SHOWN.
- ⑦ SEE PRODUCT SPEC GS-12-100 PER TEST AND PERFORMANCE INFORMATION.
- ⑧ PLATING FOR INDICATED -2XX SERIES NUMBERS MEET THE REQUIREMENTS OF GR-1217-CORE, CENTRAL OFFICE ENVIROMENT, (25 YEARS LIFE EXPECTANCY). THIS SERIES HAS SPECIAL CONTACT GEOMETRY.

spec ref	-	dr	Dave Horchler	2013/01/22	projection	mm	size	A3	scale	3:1	
tolerance std	ASME Y14.5	eng	M Srinivasan	2013/07/15			ecn no	ELX-V-15184-1			
TOLERANCES UNLESS OTHERWISE SPECIFIED		chr	-	-			product family	MEG-ARRAY		rel level	Released
surface	linear	appr	R Marshall	2013/07/15			0mm PLUG ASSEMBLY		dwg no	10123981	
	angular				10 x 32 = 320 POSITIONS		rev	B			
ASME Y14.5	0.X ±0.3	www.fci.com		cat. no.	Product - Customer Drw			sheet 5 of 5			
	0.XX ±0.13										
	0.XXX ±0.051										
	0° ±0°										



Copyright FCI.



Компания «ЭлектроПласт» предлагает заключение долгосрочных отношений при поставках импортных электронных компонентов на взаимовыгодных условиях!

Наши преимущества:

- Оперативные поставки широкого спектра электронных компонентов отечественного и импортного производства напрямую от производителей и с крупнейших мировых складов;
- Поставка более 17-ти миллионов наименований электронных компонентов;
- Поставка сложных, дефицитных, либо снятых с производства позиций;
- Оперативные сроки поставки под заказ (от 5 рабочих дней);
- Экспресс доставка в любую точку России;
- Техническая поддержка проекта, помощь в подборе аналогов, поставка прототипов;
- Система менеджмента качества сертифицирована по Международному стандарту ISO 9001;
- Лицензия ФСБ на осуществление работ с использованием сведений, составляющих государственную тайну;
- Поставка специализированных компонентов (Xilinx, Altera, Analog Devices, Intersil, Interpoint, Microsemi, Aeroflex, Peregrine, Syfer, Eurofarad, Texas Instrument, Miteq, Cobham, E2V, MA-COM, Hittite, Mini-Circuits, General Dynamics и др.);

Помимо этого, одним из направлений компании «ЭлектроПласт» является направление «Источники питания». Мы предлагаем Вам помощь Конструкторского отдела:

- Подбор оптимального решения, техническое обоснование при выборе компонента;
- Подбор аналогов;
- Консультации по применению компонента;
- Поставка образцов и прототипов;
- Техническая поддержка проекта;
- Защита от снятия компонента с производства.



#### Как с нами связаться

**Телефон:** 8 (812) 309 58 32 (многоканальный)

**Факс:** 8 (812) 320-02-42

**Электронная почта:** [org@eplast1.ru](mailto:org@eplast1.ru)

**Адрес:** 198099, г. Санкт-Петербург, ул. Калинина, дом 2, корпус 4, литера А.