

## Precision, Low Power INSTRUMENTATION AMPLIFIERS

### FEATURES

- **LOW OFFSET VOLTAGE:** 50μV max
- **LOW DRIFT:** 0.5μV/°C max
- **LOW INPUT BIAS CURRENT:** 5nA max
- **HIGH CMR:** 120dB min
- **INPUTS PROTECTED TO ±40V**
- **WIDE SUPPLY RANGE:** ±2.25V to ±18V
- **LOW QUIESCENT CURRENT:** 700μA
- **8-PIN PLASTIC DIP, SO-8**

### APPLICATIONS

- **BRIDGE AMPLIFIER**
- **THERMOCOUPLE AMPLIFIER**
- **RTD SENSOR AMPLIFIER**
- **MEDICAL INSTRUMENTATION**
- **DATA ACQUISITION**

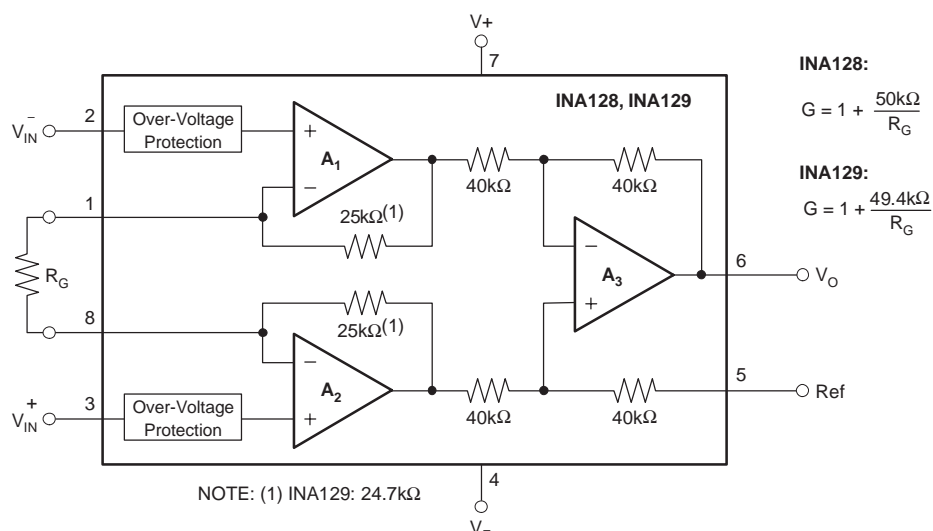
### DESCRIPTION

The INA128 and INA129 are low power, general purpose instrumentation amplifiers offering excellent accuracy. The versatile 3-op amp design and small size make them ideal for a wide range of applications. Current-feedback input circuitry provides wide bandwidth even at high gain (200kHz at G = 100).

A single external resistor sets any gain from 1 to 10,000. The INA128 provides an industry-standard gain equation; the INA129 gain equation is compatible with the AD620.

The INA128/INA129 is laser trimmed for very low offset voltage (50μV), drift (0.5μV/°C) and high common-mode rejection (120dB at G ≥ 100). It operates with power supplies as low as ±2.25V, and quiescent current is only 700μA—ideal for battery-operated systems. Internal input protection can withstand up to ±40V without damage.

The INA128/INA129 is available in 8-pin plastic DIP and SO-8 surface-mount packages, specified for the –40°C to +85°C temperature range. The INA128 is also available in a dual configuration, the INA2128.



Please be aware that an important notice concerning availability, standard warranty, and use in critical applications of Texas Instruments semiconductor products and disclaimers thereto appears at the end of this data sheet.

All trademarks are the property of their respective owners.

**ABSOLUTE MAXIMUM RATINGS<sup>(1)</sup>**

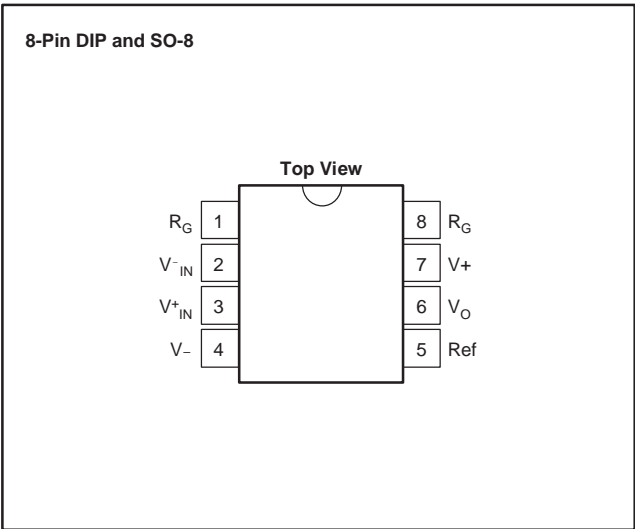
|                                   |       |                 |
|-----------------------------------|-------|-----------------|
| Supply Voltage                    | ..... | ±18V            |
| Analog Input Voltage Range        | ..... | ±40V            |
| Output Short-Circuit (to ground)  | ..... | Continuous      |
| Operating Temperature             | ..... | –40°C to +125°C |
| Storage Temperature Range         | ..... | –55°C to +125°C |
| Junction Temperature              | ..... | +150°C          |
| Lead Temperature (soldering, 10s) | ..... | +300°C          |

(1) Stresses above these ratings may cause permanent damage. Exposure to absolute maximum conditions for extended periods may degrade device reliability. These are stress ratings only, and functional operation of the device at these or any other conditions beyond those specified is not implied.

**ORDERING INFORMATION**

For the most current package and ordering information, see the Package Option Addendum located at the end of this data sheet.

**PIN CONFIGURATION**



**ELECTROSTATIC DISCHARGE SENSITIVITY**



This integrated circuit can be damaged by ESD. Texas Instruments recommends that all integrated circuits be handled with appropriate precautions. Failure to observe proper handling and installation procedures can cause damage.

ESD damage can range from subtle performance degradation to complete device failure. Precision integrated circuits may be more susceptible to damage because very small parametric changes could cause the device not to meet its published specifications.

## ELECTRICAL CHARACTERISTICS

At  $T_A = +25^\circ\text{C}$ ,  $V_S = \pm 15\text{V}$ ,  $R_L = 10\text{k}\Omega$ , unless otherwise noted.

| PARAMETER  | CONDITIONS  | INA128P, U<br>INA129P, U   |                                |                           | INA128PA, UA<br>INA129PA, UA |                           |                             | UNIT                         |
|--|---|----------------------------|--------------------------------|---------------------------|------------------------------|---------------------------|-----------------------------|------------------------------|
|  |   | MIN                        | TYP                            | MAX                       | MIN                          | TYP                       | MAX                         |                              |
| <b>INPUT</b>   |   |                            |                                |                           |                              |                           |                             |                              |
| Offset Voltage, RTI  |   |                            |                                |                           |                              |                           |                             |                              |
| Initial  | $T_A = +25^\circ\text{C}$   |                            | $\pm 10 \pm 100/\text{G}$      | $\pm 50 \pm 500/\text{G}$ |                              | $\pm 25 \pm 100/\text{G}$ | $\pm 125 \pm 1000/\text{G}$ | $\mu\text{V}$                |
| vs Temperature   | $T_A = T_{\text{MIN}}$ to $T_{\text{MAX}}$                        |                            | $\pm 0.2 \pm 2/\text{G}$       | $\pm 0.5 \pm 20/\text{G}$ |                              | $\pm 0.2 \pm 5/\text{G}$  | $\pm 1 \pm 20/\text{G}$     | $\mu\text{V}/^\circ\text{C}$ |
| vs Power Supply  | $V_S = \pm 2.25\text{V}$ to $\pm 18\text{V}$                      |                            | $\pm 0.2 \pm 20/\text{G}$      | $\pm 1 \pm 100/\text{G}$  |                              | *                         | $\pm 2 \pm 200/\text{G}$    | $\mu\text{V}/\text{V}$       |
| Long-Term Stability  |   |                            | $\pm 0.1 \pm 3/\text{G}$       |                           |                              | *                         |                             | $\mu\text{V}/\text{mo}$      |
| Impedance, Differential  |   |                            | $10^{10} \parallel 2$          |                           |                              | *                         |                             | $\Omega \parallel \text{pF}$ |
| Common-Mode  |   |                            | $10^{11} \parallel 9$          |                           |                              | *                         |                             | $\Omega \parallel \text{pF}$ |
| Common-Mode Voltage Range <sup>(1)</sup>                       | $V_O = 0\text{V}$   | $(V^+) - 2$<br>$(V^-) + 2$ | $(V^+) - 1.4$<br>$(V^-) + 1.7$ |                           | *                            | *                         |                             | V                            |
| Safe Input Voltage   |   |                            |                                | $\pm 40$                  | *                            | *                         | *                           | V                            |
| Common-Mode Rejection  | $V_{\text{CM}} = \pm 13\text{V}$ , $\Delta R_S = 1\text{k}\Omega$ |                            |                                |                           |                              |                           |                             |                              |
|  | $G = 1$   | 80                         | 86                             |                           | 73                           | *                         |                             | dB                           |
|  | $G = 10$  | 100                        | 106                            |                           | 93                           | *                         |                             | dB                           |
|  | $G = 100$   | 120                        | 125                            |                           | 110                          | *                         |                             | dB                           |
|  | $G = 1000$  | 120                        | 130                            |                           | 110                          | *                         |                             | dB                           |
| <b>BIAS CURRENT</b>  |   |                            | $\pm 2$                        | $\pm 5$                   |                              | *                         | $\pm 10$                    | nA                           |
| vs Temperature   |   |                            | $\pm 30$                       |                           |                              | *                         |                             | $\text{pA}/^\circ\text{C}$   |
| Offset Current   |   |                            | $\pm 1$                        | $\pm 5$                   |                              | *                         | $\pm 10$                    | nA                           |
| vs Temperature   |   |                            | $\pm 30$                       |                           |                              | *                         |                             | $\text{pA}/^\circ\text{C}$   |
| <b>NOISE VOLTAGE, RTI</b>                                      | $G = 1000$ , $R_S = 0\Omega$                                      |                            |                                |                           |                              |                           |                             |                              |
| $f = 10\text{Hz}$  |   |                            | 10                             |                           |                              | *                         |                             | $\text{nV}/\sqrt{\text{Hz}}$ |
| $f = 100\text{Hz}$   |   |                            | 8                              |                           |                              | *                         |                             | $\text{nV}/\sqrt{\text{Hz}}$ |
| $f = 1\text{kHz}$  |   |                            | 8                              |                           |                              | *                         |                             | $\text{nV}/\sqrt{\text{Hz}}$ |
| $f_B = 0.1\text{Hz}$ to $10\text{Hz}$                          |   |                            | 0.2                            |                           |                              | *                         |                             | $\mu\text{V}_{\text{PP}}$    |
| Noise Current  |   |                            |                                |                           |                              |                           |                             |                              |
| $f = 10\text{Hz}$  |   |                            | 0.9                            |                           |                              | *                         |                             | $\text{pA}/\sqrt{\text{Hz}}$ |
| $f = 1\text{kHz}$  |   |                            | 0.3                            |                           |                              | *                         |                             | $\text{pA}/\sqrt{\text{Hz}}$ |
| $f_B = 0.1\text{Hz}$ to $10\text{Hz}$                          |   |                            | 30                             |                           |                              | *                         |                             | $\text{pA}_{\text{PP}}$      |
| <b>GAIN</b>  |   |                            |                                |                           |                              |                           |                             |                              |
| Gain Equation, INA128  |   |                            | $1 + (50\text{k}\Omega/R_G)$   |                           |                              | *                         |                             | V/V                          |
| INA129   |   |                            | $1 + (49.4\text{k}\Omega/R_G)$ |                           |                              | *                         |                             | V/V                          |
| Range of Gain  |   | 1                          |                                | 10000                     | *                            |                           | *                           | V/V                          |
| Gain Error   | $G = 1$   |                            | $\pm 0.01$                     | $\pm 0.024$               |                              | *                         | $\pm 0.1$                   | %                            |
|  | $G = 10$  |                            | $\pm 0.02$                     | $\pm 0.4$                 |                              | *                         | $\pm 0.5$                   | %                            |
|  | $G = 100$   |                            | $\pm 0.05$                     | $\pm 0.5$                 |                              | *                         | $\pm 0.7$                   | %                            |
|  | $G = 1000$  |                            | $\pm 0.5$                      | $\pm 1$                   |                              | *                         | $\pm 2$                     | %                            |
| Gain vs Temperature <sup>(2)</sup>                             | $G = 1$   |                            | $\pm 1$                        | $\pm 10$                  |                              | *                         | *                           | $\text{ppm}/^\circ\text{C}$  |
| 50k $\Omega$ (or 49.4k $\Omega$ ) Resistance <sup>(2)(3)</sup> |   |                            | $\pm 25$                       | $\pm 100$                 |                              | *                         | *                           | $\text{ppm}/^\circ\text{C}$  |
| Nonlinearity   | $V_O = \pm 13.6\text{V}$ , $G = 1$                                |                            | $\pm 0.0001$                   | $\pm 0.001$               |                              | *                         | $\pm 0.002$                 | % of FSR                     |
|  | $G = 10$  |                            | $\pm 0.0003$                   | $\pm 0.002$               |                              | *                         | $\pm 0.004$                 | % of FSR                     |
|  | $G = 100$   |                            | $\pm 0.0005$                   | $\pm 0.002$               |                              | *                         | $\pm 0.004$                 | % of FSR                     |
|  | $G = 1000$  |                            | $\pm 0.001$                    | (4)                       |                              | *                         | *                           | % of FSR                     |

NOTE: \* Specification is same as INA128P, U or INA129P, U.

(1) Input common-mode range varies with output voltage — see typical curves.

(2) Specified by wafer test.

(3) Temperature coefficient of the 50k $\Omega$  (or 49.4k $\Omega$ ) term in the gain equation.

(4) Nonlinearity measurements in  $G = 1000$  are dominated by noise. Typical nonlinearity is  $\pm 0.001\%$ .

**ELECTRICAL CHARACTERISTICS (continued)**

At  $T_A = +25^{\circ}\text{C}$ ,  $V_S = \pm 15\text{V}$ ,  $R_L = 10\text{k}\Omega$ , unless otherwise noted.

| PARAMETER                  | CONDITIONS                        | INA128P, U<br>INA129P, U |               |           | INA128PA, UA<br>INA129PA, UA |     |     | UNIT                 |
|----------------------------|-----------------------------------|--------------------------|---------------|-----------|------------------------------|-----|-----|----------------------|
|                            |                                   | MIN                      | TYP           | MAX       | MIN                          | TYP | MAX |                      |
| <b>OUTPUT</b>              |                                   |                          |               |           |                              |     |     |                      |
| Voltage: Positive          | $R_L = 10\text{k}\Omega$          | $(V_+) - 1.4$            | $(V_+) - 0.9$ |           | *                            | *   |     | V                    |
| Negative                   | $R_L = 10\text{k}\Omega$          | $(V_-) + 1.4$            | $(V_-) + 0.8$ |           | *                            | *   |     | V                    |
| Load Capacitance Stability |                                   |                          | 1000          |           |                              | *   |     | pF                   |
| Short-Circuit Current      |                                   |                          | +6/-15        |           |                              | *   |     | mA                   |
| <b>FREQUENCY RESPONSE</b>  |                                   |                          |               |           |                              |     |     |                      |
| Bandwidth, -3dB            | $G = 1$                           |                          | 1.3           |           |                              | *   |     | MHz                  |
|                            | $G = 10$                          |                          | 700           |           |                              | *   |     | kHz                  |
|                            | $G = 100$                         |                          | 200           |           |                              | *   |     | kHz                  |
|                            | $G = 1000$                        |                          | 20            |           |                              | *   |     | kHz                  |
| Slew Rate                  | $V_O = \pm 10\text{V}$ , $G = 10$ |                          | 4             |           |                              | *   |     | V/ $\mu\text{s}$     |
| Settling Time, 0.01%       | $G = 1$                           |                          | 7             |           |                              | *   |     | $\mu\text{s}$        |
|                            | $G = 10$                          |                          | 7             |           |                              | *   |     | $\mu\text{s}$        |
|                            | $G = 100$                         |                          | 9             |           |                              | *   |     | $\mu\text{s}$        |
|                            | $G = 1000$                        |                          | 80            |           |                              | *   |     | $\mu\text{s}$        |
| Overload Recovery          | 50% Overdrive                     |                          | 4             |           |                              | *   |     | $\mu\text{s}$        |
| <b>POWER SUPPLY</b>        |                                   |                          |               |           |                              |     |     |                      |
| Voltage Range              |                                   | $\pm 2.25$               | $\pm 15$      | $\pm 18$  | *                            | *   | *   | V                    |
| Current, Total             | $V_{IN} = 0\text{V}$              |                          | $\pm 700$     | $\pm 750$ |                              | *   | *   | $\mu\text{A}$        |
| <b>TEMPERATURE RANGE</b>   |                                   |                          |               |           |                              |     |     |                      |
| Specification              |                                   | -40                      |               | +85       | *                            |     | *   | $^{\circ}\text{C}$   |
| Operating                  |                                   | -40                      |               | +125      | *                            |     | *   | $^{\circ}\text{C}$   |
| $\theta_{JA}$ 8-Pin DIP    |                                   |                          | 80            |           |                              | *   |     | $^{\circ}\text{C/W}$ |
| SO-8 SOIC                  |                                   |                          | 150           |           |                              | *   |     | $^{\circ}\text{C/W}$ |

NOTE: \* Specification is same as INA128P, U or INA129P, U.

(1) Input common-mode range varies with output voltage — see typical curves.

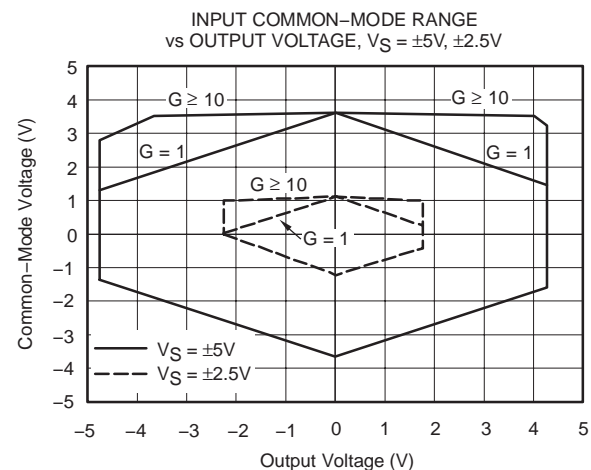
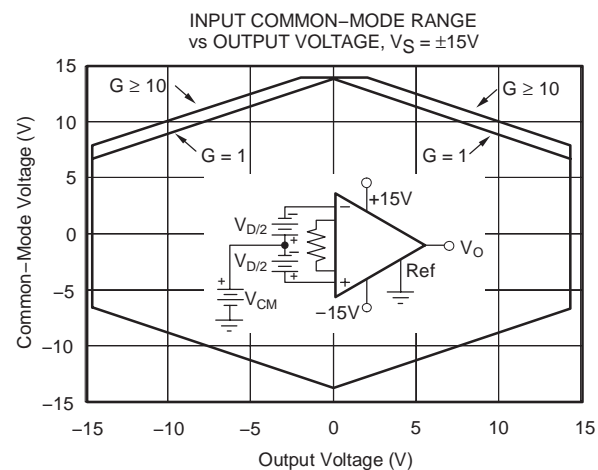
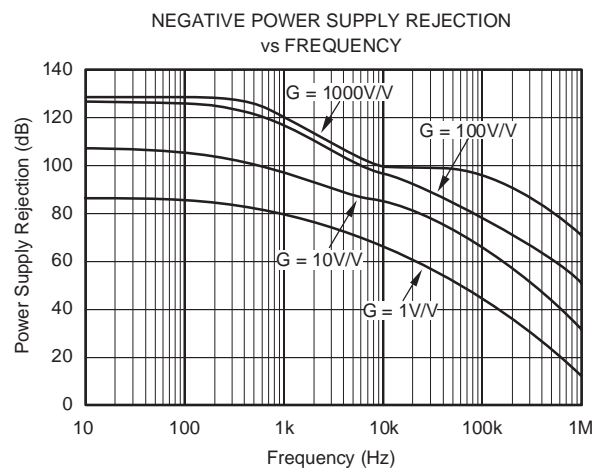
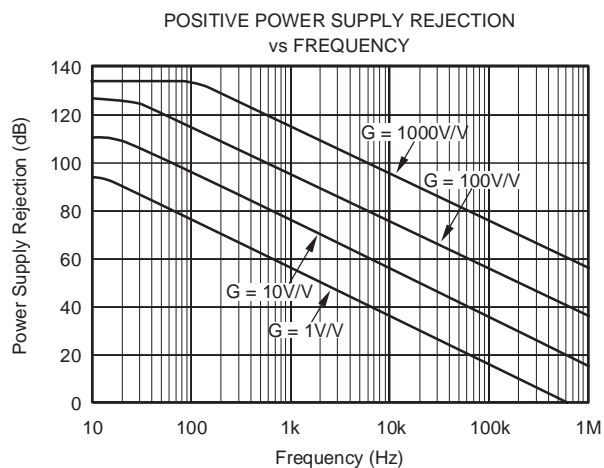
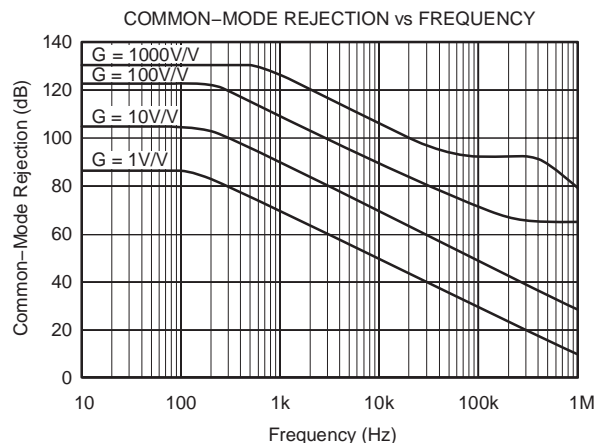
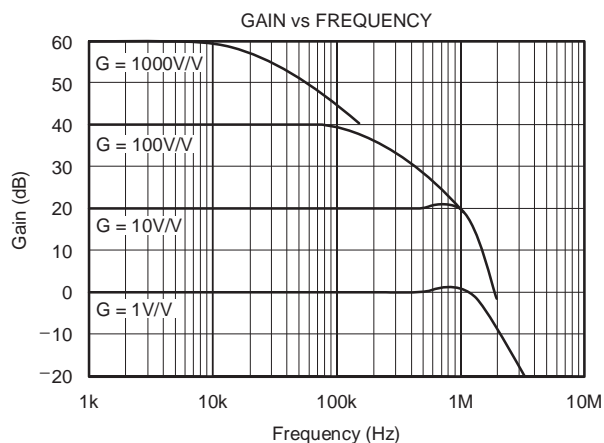
(2) Specified by wafer test.

(3) Temperature coefficient of the  $50\text{k}\Omega$  (or  $49.4\text{k}\Omega$ ) term in the gain equation.

(4) Nonlinearity measurements in  $G = 1000$  are dominated by noise. Typical nonlinearity is  $\pm 0.001\%$ .

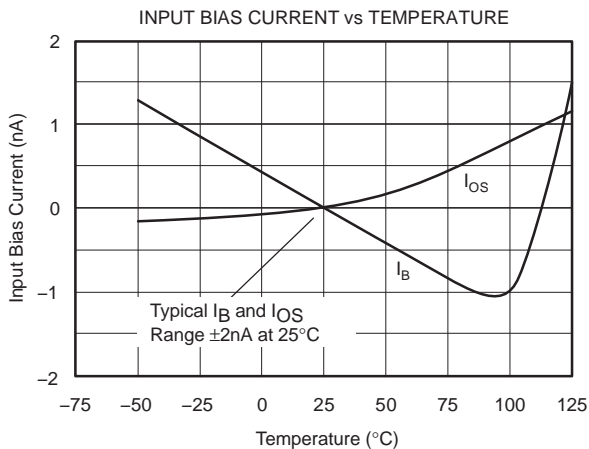
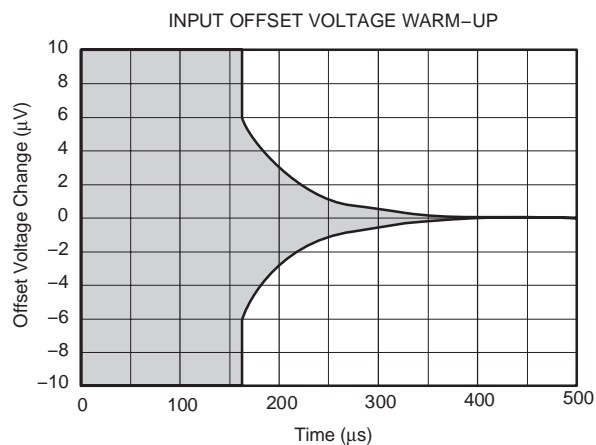
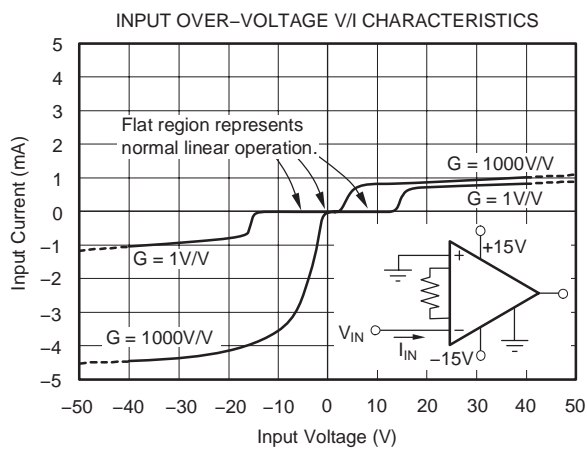
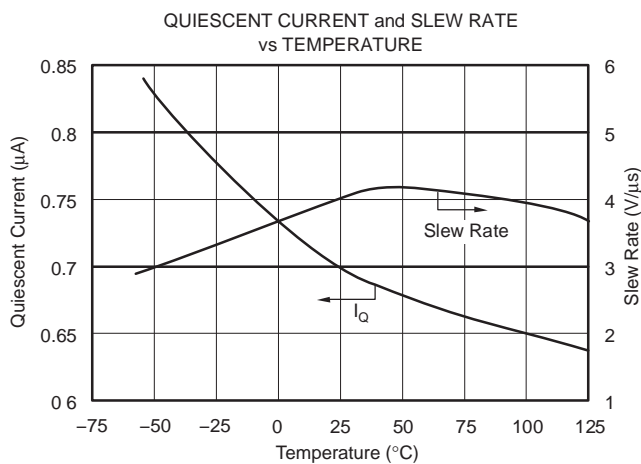
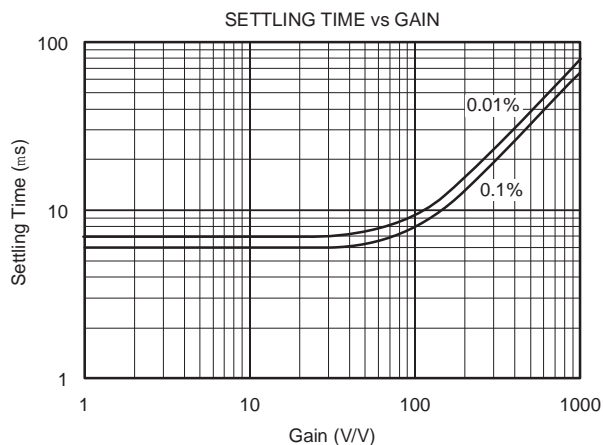
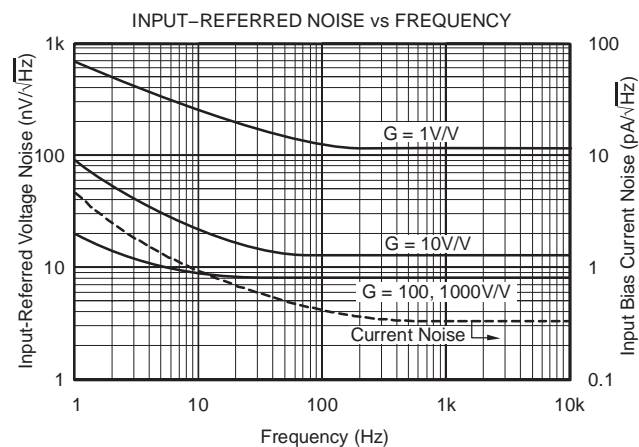
## TYPICAL CHARACTERISTICS

At  $T_A = +25^\circ\text{C}$ ,  $V_S = \pm 15\text{V}$ , unless otherwise noted.



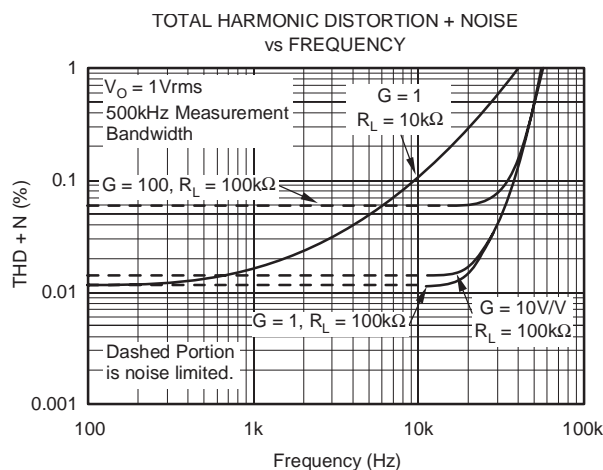
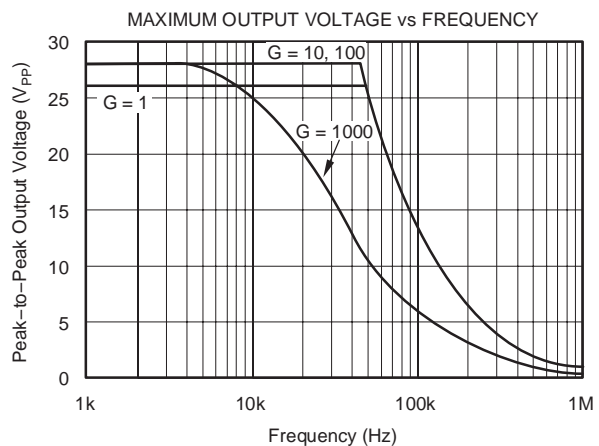
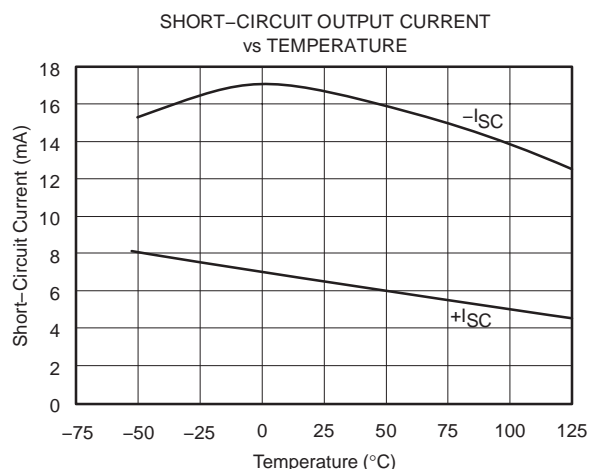
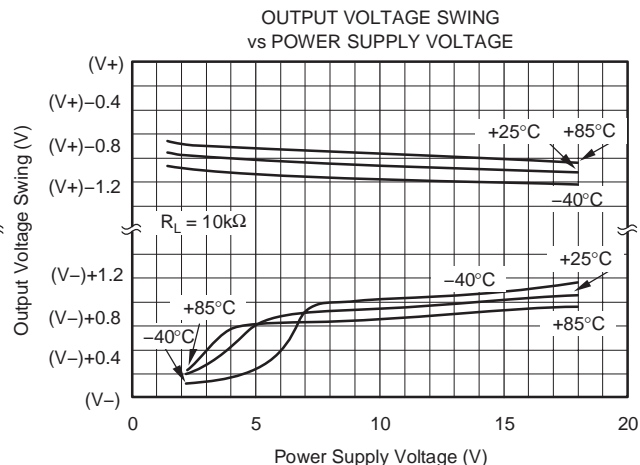
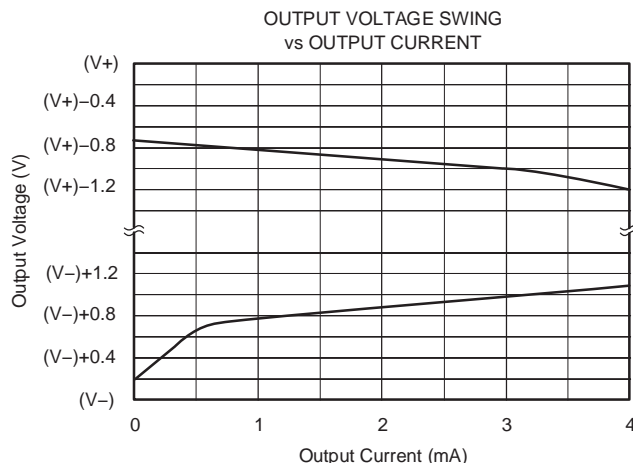
## TYPICAL CHARACTERISTICS (continued)

At  $T_A = +25^\circ\text{C}$ ,  $V_S = \pm 15\text{V}$ , unless otherwise noted.



## TYPICAL CHARACTERISTICS (continued)

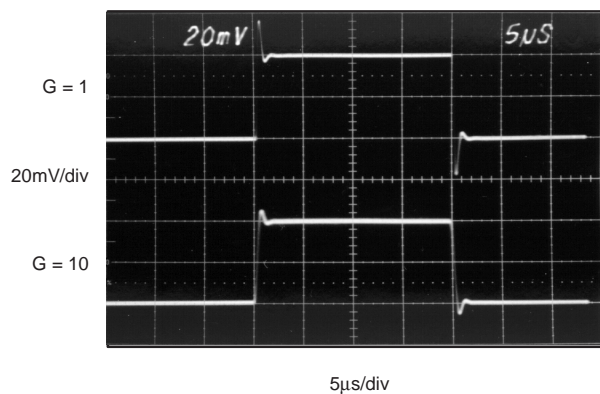
At  $T_A = +25^\circ\text{C}$ ,  $V_S = \pm 15\text{V}$ , unless otherwise noted.



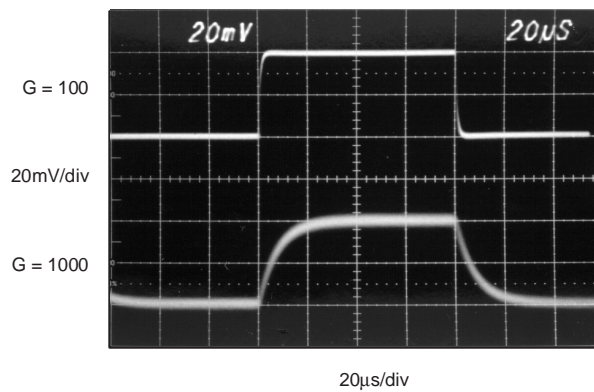
## TYPICAL CHARACTERISTICS (continued)

At  $T_A = +25^\circ\text{C}$ ,  $V_S = \pm 15\text{V}$ , unless otherwise noted.

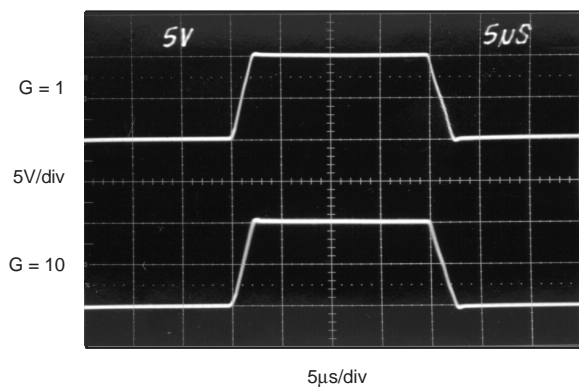
SMALL SIGNAL  
( $G = 1, 10$ )



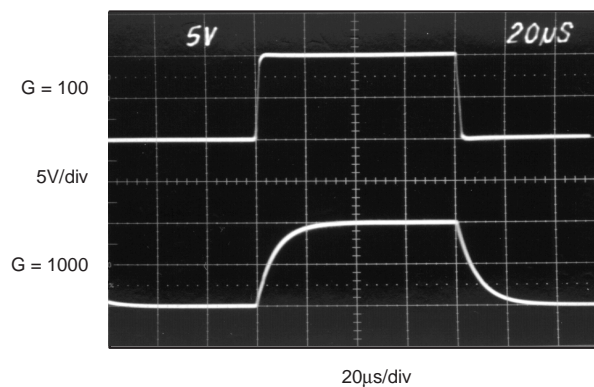
SMALL SIGNAL  
( $G = 100, 1000$ )



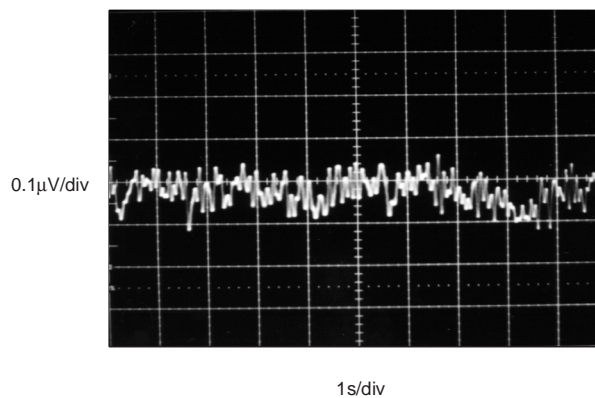
LARGE SIGNAL  
( $G = 1, 10$ )



LARGE SIGNAL  
( $G = 100, 1000$ )



VOLTAGE NOISE 0.1 to 10Hz  
INPUT-REFERRED,  $G \geq 100$





## APPLICATIONS INFORMATION

Figure 1 shows the basic connections required for operation of the INA128/INA129. Applications with noisy or high impedance power supplies may require decoupling capacitors close to the device pins as shown.

The output is referred to the output reference (Ref) terminal which is normally grounded. This must be a low-impedance connection to assure good common-mode rejection. A resistance of 8Ω in series with the Ref pin will cause a typical device to degrade to approximately 80dB CMR ( $G = 1$ ).

### SETTING THE GAIN

Gain is set by connecting a single external resistor,  $R_G$ , connected between pins 1 and 8:

INA128:

$$G = 1 + \frac{50k\Omega}{R_G} \quad (1)$$

INA129:

$$G = 1 + \frac{49.4k\Omega}{R_G} \quad (2)$$

Commonly used gains and resistor values are shown in Figure 1.

The 50kΩ term in Equation 1 (49.4kΩ in Equation 2) comes from the sum of the two internal feedback resistors of  $A_1$  and  $A_2$ . These on-chip metal film

resistors are laser trimmed to accurate absolute values. The accuracy and temperature coefficient of these internal resistors are included in the gain accuracy and drift specifications of the INA128/INA129.

The stability and temperature drift of the external gain setting resistor,  $R_G$ , also affects gain.  $R_G$ 's contribution to gain accuracy and drift can be directly inferred from the gain equation (1). Low resistor values required for high gain can make wiring resistance important. Sockets add to the wiring resistance which will contribute additional gain error (possibly an unstable gain error) in gains of approximately 100 or greater.

### DYNAMIC PERFORMANCE

The typical performance curve *Gain vs Frequency* shows that, despite its low quiescent current, the INA128/INA129 achieves wide bandwidth, even at high gain. This is due to the current-feedback topology of the input stage circuitry. Settling time also remains excellent at high gain.

### NOISE PERFORMANCE

The INA128/INA129 provides very low noise in most applications. Low frequency noise is approximately 0.2μV<sub>PP</sub> measured from 0.1 to 10Hz ( $G \geq 100$ ). This provides dramatically improved noise when compared to state-of-the-art chopper-stabilized amplifiers.

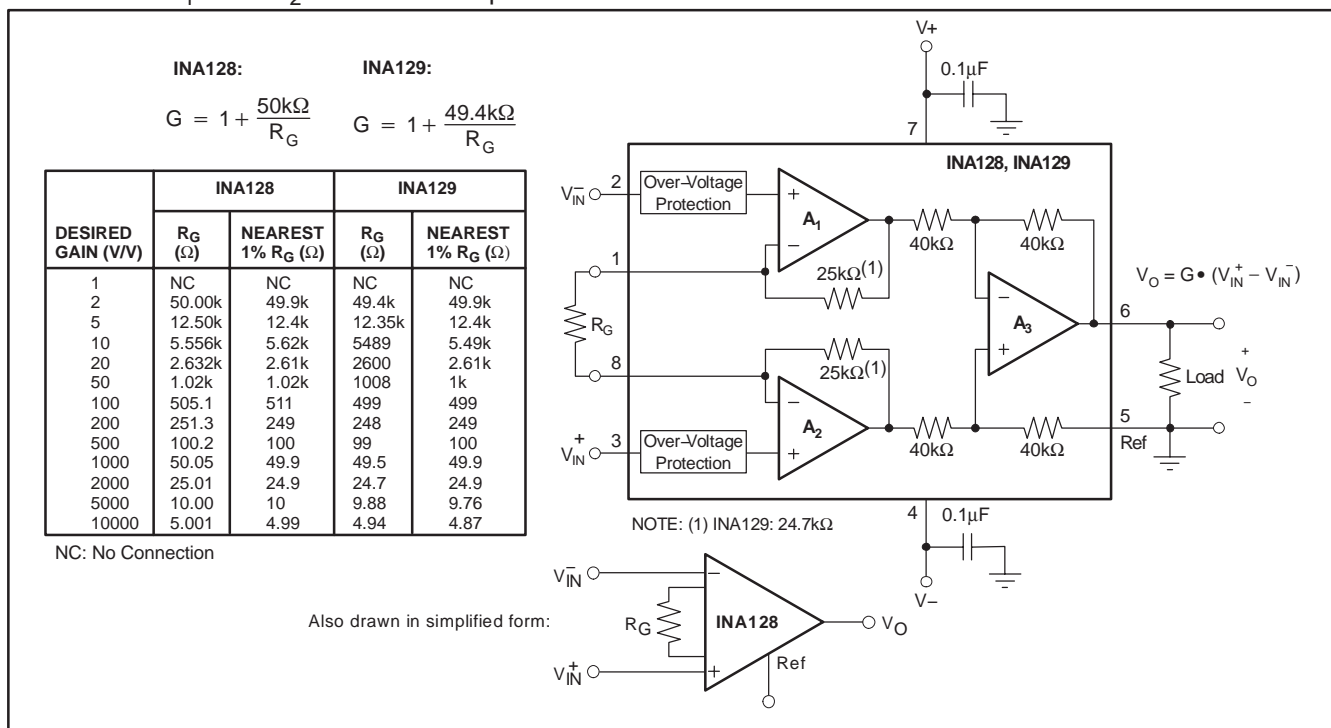


Figure 1. Basic Connections

## OFFSET TRIMMING

The INA128/INA129 is laser trimmed for low offset voltage and offset voltage drift. Most applications require no external offset adjustment. Figure 2 shows an optional circuit for trimming the output offset voltage. The voltage applied to Ref terminal is summed with the output. The op amp buffer provides low impedance at the Ref terminal to preserve good common-mode rejection.

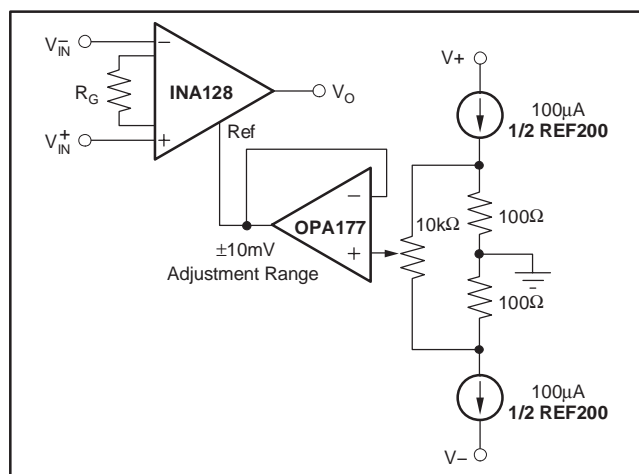


Figure 2. Optional Trimming of Output Offset Voltage

## INPUT BIAS CURRENT RETURN PATH

The input impedance of the INA128/INA129 is extremely high—approximately  $10^{10}\Omega$ . However, a path must be provided for the input bias current of both inputs. This input bias current is approximately  $\pm 2\text{nA}$ . High input impedance means that this input bias current changes very little with varying input voltage.

Input circuitry must provide a path for this input bias current for proper operation. Figure 3 shows various provisions for an input bias current path. Without a bias current path, the inputs will float to a potential which exceeds the common-mode range, and the input amplifiers will saturate.

If the differential source resistance is low, the bias current return path can be connected to one input (see the thermocouple example in Figure 3). With higher source impedance, using two equal resistors provides a balanced input with possible advantages of lower input offset voltage due to bias current and better high-frequency common-mode rejection.

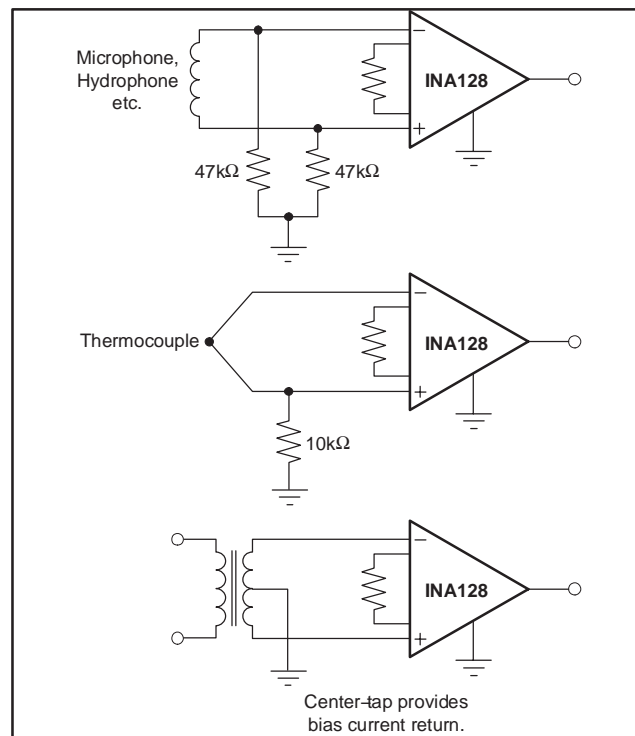


Figure 3. Providing an Input Common-Mode Current Path

## INPUT COMMON-MODE RANGE

The linear input voltage range of the input circuitry of the INA128/INA129 is from approximately 1.4V below the positive supply voltage to 1.7V above the negative supply. As a differential input voltage causes the output voltage increase, however, the linear input range will be limited by the output voltage swing of amplifiers  $A_1$  and  $A_2$ . So the linear common-mode input range is related to the output voltage of the complete amplifier. This behavior also depends on supply voltage—see performance curves, *Input Common-Mode Range vs Output Voltage*.

Input-overload can produce an output voltage that appears normal. For example, if an input overload condition drives both input amplifiers to their positive output swing limit, the difference voltage measured by the output amplifier will be near zero. The output of  $A_3$  will be near 0V even though both inputs are overloaded.

## LOW VOLTAGE OPERATION

The INA128/INA129 can be operated on power supplies as low as  $\pm 2.25\text{V}$ . Performance remains excellent with power supplies ranging from  $\pm 2.25\text{V}$  to  $\pm 18\text{V}$ . Most parameters vary only slightly throughout this supply voltage range—see typical performance curves.

Operation at very low supply voltage requires careful attention to assure that the input voltages remain within their linear range. Voltage swing requirements of internal nodes limit the input common-mode range with low power supply voltage. Typical performance curves, "Input Common-Mode Range vs Output Voltage" show the range of linear operation for  $\pm 15\text{V}$ ,  $\pm 5\text{V}$ , and  $\pm 2.5\text{V}$  supplies.

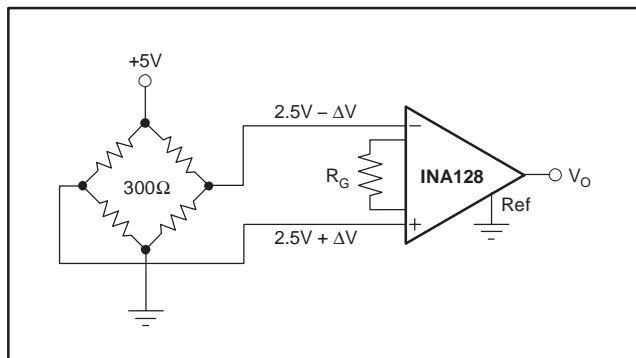


Figure 4. Bridge Amplifier

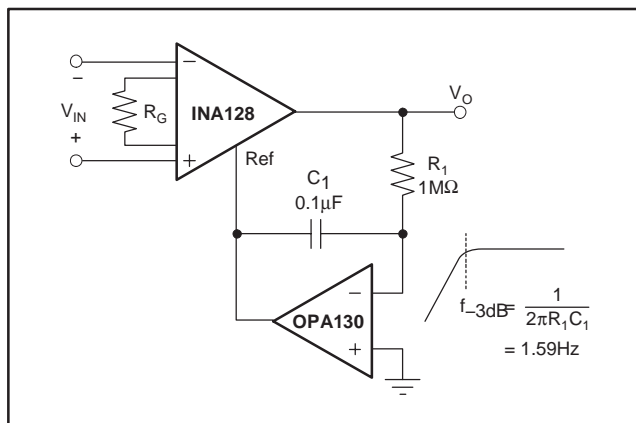


Figure 5. AC-Coupled Instrumentation Amplifier

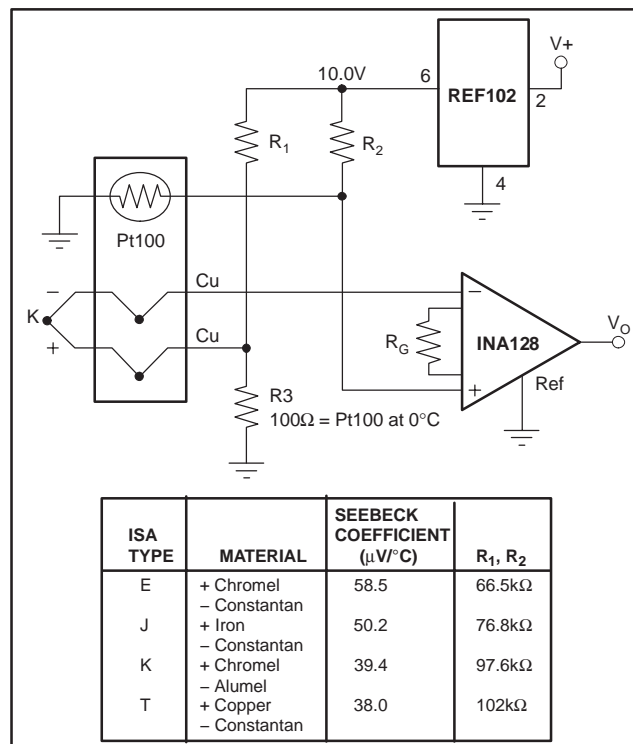


Figure 6. Thermocouple Amplifier with RTD Cold-Junction Compensation

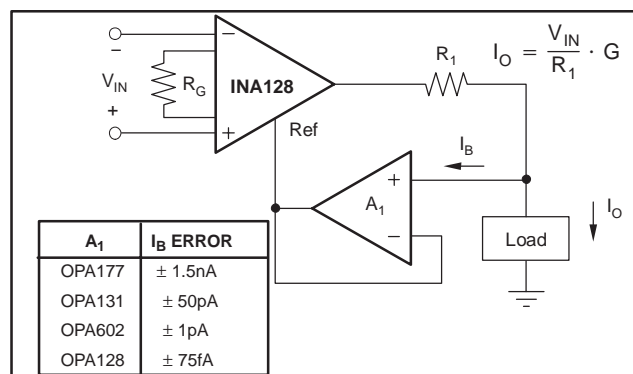


Figure 7. Differential Voltage to Current Converter

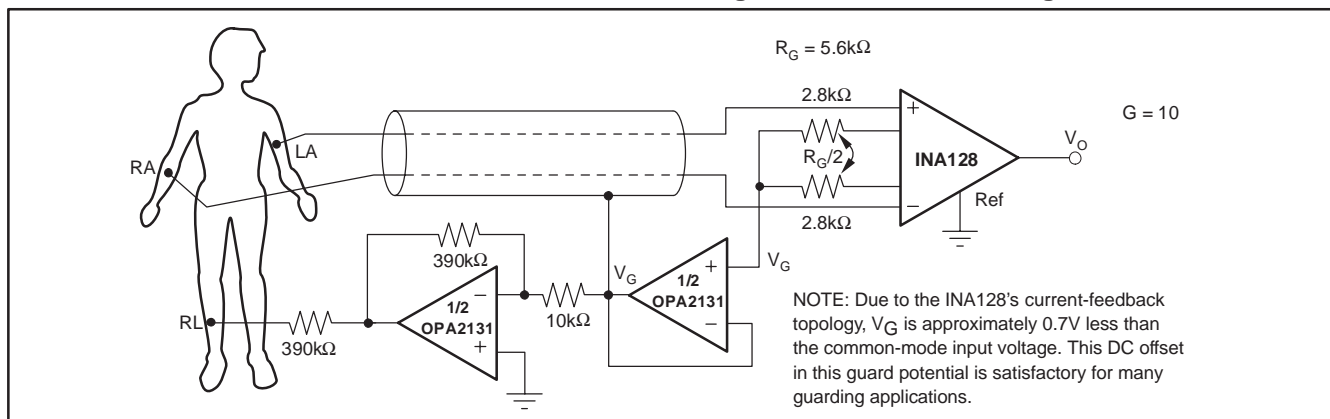


Figure 8. ECG Amplifier with Right-Leg Drive

**PACKAGING INFORMATION**

| Orderable Device | Status<br>(1) | Package Type | Package<br>Drawing | Pins | Package<br>Qty | Eco Plan<br>(2)            | Lead/Ball Finish | MSL Peak Temp<br>(3) | Op Temp (°C) | Top-Side Markings<br>(4) | Samples                 |
|------------------|---------------|--------------|--------------------|------|----------------|----------------------------|------------------|----------------------|--------------|--------------------------|-------------------------|
| INA128P          | ACTIVE        | PDIP         | P                  | 8    | 50             | Green (RoHS<br>& no Sb/Br) | CU NIPDAU        | N / A for Pkg Type   |              | INA128P                  | <a href="#">Samples</a> |
| INA128PA         | ACTIVE        | PDIP         | P                  | 8    | 50             | Green (RoHS<br>& no Sb/Br) | CU NIPDAU        | N / A for Pkg Type   |              | INA128P<br>A             | <a href="#">Samples</a> |
| INA128PAG4       | ACTIVE        | PDIP         | P                  | 8    | 50             | Green (RoHS<br>& no Sb/Br) | CU NIPDAU        | N / A for Pkg Type   |              | INA128P<br>A             | <a href="#">Samples</a> |
| INA128PG4        | ACTIVE        | PDIP         | P                  | 8    | 50             | Green (RoHS<br>& no Sb/Br) | CU NIPDAU        | N / A for Pkg Type   |              | INA128P                  | <a href="#">Samples</a> |
| INA128U          | ACTIVE        | SOIC         | D                  | 8    | 75             | Green (RoHS<br>& no Sb/Br) | CU NIPDAU        | Level-3-260C-168 HR  |              | INA<br>128U              | <a href="#">Samples</a> |
| INA128U/2K5      | ACTIVE        | SOIC         | D                  | 8    | 2500           | Green (RoHS<br>& no Sb/Br) | CU NIPDAU        | Level-3-260C-168 HR  |              | INA<br>128U              | <a href="#">Samples</a> |
| INA128U/2K5G4    | ACTIVE        | SOIC         | D                  | 8    | 2500           | Green (RoHS<br>& no Sb/Br) | CU NIPDAU        | Level-3-260C-168 HR  |              | INA<br>128U              | <a href="#">Samples</a> |
| INA128UA         | ACTIVE        | SOIC         | D                  | 8    | 75             | Green (RoHS<br>& no Sb/Br) | CU NIPDAU        | Level-3-260C-168 HR  | -40 to 125   | INA<br>128U<br>A         | <a href="#">Samples</a> |
| INA128UA/2K5     | ACTIVE        | SOIC         | D                  | 8    | 2500           | Green (RoHS<br>& no Sb/Br) | CU NIPDAU        | Level-3-260C-168 HR  | -40 to 125   | INA<br>128U<br>A         | <a href="#">Samples</a> |
| INA128UA/2K5E4   | ACTIVE        | SOIC         | D                  | 8    | 2500           | Green (RoHS<br>& no Sb/Br) | CU NIPDAU        | Level-3-260C-168 HR  | -40 to 125   | INA<br>128U<br>A         | <a href="#">Samples</a> |
| INA128UA/2K5G4   | ACTIVE        | SOIC         | D                  | 8    | 2500           | Green (RoHS<br>& no Sb/Br) | CU NIPDAU        | Level-3-260C-168 HR  | -40 to 125   | INA<br>128U<br>A         | <a href="#">Samples</a> |
| INA128UAE4       | ACTIVE        | SOIC         | D                  | 8    | 75             | Green (RoHS<br>& no Sb/Br) | CU NIPDAU        | Level-3-260C-168 HR  | -40 to 125   | INA<br>128U<br>A         | <a href="#">Samples</a> |
| INA128UAG4       | ACTIVE        | SOIC         | D                  | 8    | 75             | Green (RoHS<br>& no Sb/Br) | CU NIPDAU        | Level-3-260C-168 HR  | -40 to 125   | INA<br>128U<br>A         | <a href="#">Samples</a> |
| INA128UG4        | ACTIVE        | SOIC         | D                  | 8    | 75             | Green (RoHS<br>& no Sb/Br) | CU NIPDAU        | Level-3-260C-168 HR  |              | INA<br>128U              | <a href="#">Samples</a> |

| Orderable Device | Status<br>(1) | Package Type | Package<br>Drawing | Pins | Package<br>Qty | Eco Plan<br>(2)            | Lead/Ball Finish | MSL Peak Temp<br>(3) | Op Temp (°C) | Top-Side Markings<br>(4) | Samples                 |
|------------------|---------------|--------------|--------------------|------|----------------|----------------------------|------------------|----------------------|--------------|--------------------------|-------------------------|
| INA129P          | ACTIVE        | PDIP         | P                  | 8    | 50             | Green (RoHS<br>& no Sb/Br) | CU NIPDAU        | N / A for Pkg Type   |              | INA129P                  | <a href="#">Samples</a> |
| INA129PA         | ACTIVE        | PDIP         | P                  | 8    | 50             | Green (RoHS<br>& no Sb/Br) | CU NIPDAU        | N / A for Pkg Type   |              | INA129P<br>A             | <a href="#">Samples</a> |
| INA129PAG4       | ACTIVE        | PDIP         | P                  | 8    | 50             | Green (RoHS<br>& no Sb/Br) | CU NIPDAU        | N / A for Pkg Type   |              | INA129P<br>A             | <a href="#">Samples</a> |
| INA129PG4        | ACTIVE        | PDIP         | P                  | 8    | 50             | Green (RoHS<br>& no Sb/Br) | CU NIPDAU        | N / A for Pkg Type   |              | INA129P                  | <a href="#">Samples</a> |
| INA129U          | ACTIVE        | SOIC         | D                  | 8    | 75             | Green (RoHS<br>& no Sb/Br) | CU NIPDAU        | Level-3-260C-168 HR  |              | INA<br>129U              | <a href="#">Samples</a> |
| INA129U/2K5      | ACTIVE        | SOIC         | D                  | 8    | 2500           | Green (RoHS<br>& no Sb/Br) | CU NIPDAU        | Level-3-260C-168 HR  |              | INA<br>129U              | <a href="#">Samples</a> |
| INA129U/2K5G4    | ACTIVE        | SOIC         | D                  | 8    | 2500           | Green (RoHS<br>& no Sb/Br) | CU NIPDAU        | Level-3-260C-168 HR  |              | INA<br>129U              | <a href="#">Samples</a> |
| INA129UA         | ACTIVE        | SOIC         | D                  | 8    | 75             | Green (RoHS<br>& no Sb/Br) | CU NIPDAU        | Level-3-260C-168 HR  | -40 to 125   | INA<br>129U<br>A         | <a href="#">Samples</a> |
| INA129UA/2K5     | ACTIVE        | SOIC         | D                  | 8    | 2500           | Green (RoHS<br>& no Sb/Br) | CU NIPDAU        | Level-3-260C-168 HR  | -40 to 125   | INA<br>129U<br>A         | <a href="#">Samples</a> |
| INA129UA/2K5E4   | ACTIVE        | SOIC         | D                  | 8    | 2500           | Green (RoHS<br>& no Sb/Br) | CU NIPDAU        | Level-3-260C-168 HR  | -40 to 125   | INA<br>129U<br>A         | <a href="#">Samples</a> |
| INA129UA/2K5G4   | ACTIVE        | SOIC         | D                  | 8    | 2500           | Green (RoHS<br>& no Sb/Br) | CU NIPDAU        | Level-3-260C-168 HR  | -40 to 125   | INA<br>129U<br>A         | <a href="#">Samples</a> |
| INA129UAE4       | ACTIVE        | SOIC         | D                  | 8    | 75             | Green (RoHS<br>& no Sb/Br) | CU NIPDAU        | Level-3-260C-168 HR  | -40 to 125   | INA<br>129U<br>A         | <a href="#">Samples</a> |
| INA129UG4        | ACTIVE        | SOIC         | D                  | 8    | 75             | Green (RoHS<br>& no Sb/Br) | CU NIPDAU        | Level-3-260C-168 HR  |              | INA<br>129U              | <a href="#">Samples</a> |
| SN412014DRE4     | ACTIVE        | SOIC         | D                  | 8    | 2500           | Green (RoHS<br>& no Sb/Br) | CU NIPDAU        | Level-3-260C-168 HR  | -40 to 125   | INA<br>128U<br>A         | <a href="#">Samples</a> |

(1) The marketing status values are defined as follows:

**ACTIVE:** Product device recommended for new designs.

**LIFEBUY:** TI has announced that the device will be discontinued, and a lifetime-buy period is in effect.

**NRND:** Not recommended for new designs. Device is in production to support existing customers, but TI does not recommend using this part in a new design.

**PREVIEW:** Device has been announced but is not in production. Samples may or may not be available.

**OBSOLETE:** TI has discontinued the production of the device.

<sup>(2)</sup> Eco Plan - The planned eco-friendly classification: Pb-Free (RoHS), Pb-Free (RoHS Exempt), or Green (RoHS & no Sb/Br) - please check <http://www.ti.com/productcontent> for the latest availability information and additional product content details.

**TBD:** The Pb-Free/Green conversion plan has not been defined.

**Pb-Free (RoHS):** TI's terms "Lead-Free" or "Pb-Free" mean semiconductor products that are compatible with the current RoHS requirements for all 6 substances, including the requirement that lead not exceed 0.1% by weight in homogeneous materials. Where designed to be soldered at high temperatures, TI Pb-Free products are suitable for use in specified lead-free processes.

**Pb-Free (RoHS Exempt):** This component has a RoHS exemption for either 1) lead-based flip-chip solder bumps used between the die and package, or 2) lead-based die adhesive used between the die and leadframe. The component is otherwise considered Pb-Free (RoHS compatible) as defined above.

**Green (RoHS & no Sb/Br):** TI defines "Green" to mean Pb-Free (RoHS compatible), and free of Bromine (Br) and Antimony (Sb) based flame retardants (Br or Sb do not exceed 0.1% by weight in homogeneous material)

<sup>(3)</sup> MSL, Peak Temp. -- The Moisture Sensitivity Level rating according to the JEDEC industry standard classifications, and peak solder temperature.

<sup>(4)</sup> Multiple Top-Side Markings will be inside parentheses. Only one Top-Side Marking contained in parentheses and separated by a "~" will appear on a device. If a line is indented then it is a continuation of the previous line and the two combined represent the entire Top-Side Marking for that device.

**Important Information and Disclaimer:** The information provided on this page represents TI's knowledge and belief as of the date that it is provided. TI bases its knowledge and belief on information provided by third parties, and makes no representation or warranty as to the accuracy of such information. Efforts are underway to better integrate information from third parties. TI has taken and continues to take reasonable steps to provide representative and accurate information but may not have conducted destructive testing or chemical analysis on incoming materials and chemicals. TI and TI suppliers consider certain information to be proprietary, and thus CAS numbers and other limited information may not be available for release.

In no event shall TI's liability arising out of such information exceed the total purchase price of the TI part(s) at issue in this document sold by TI to Customer on an annual basis.

#### **OTHER QUALIFIED VERSIONS OF INA128, INA129 :**

- Enhanced Product: [INA129-EP](#)

NOTE: Qualified Version Definitions:

- Enhanced Product - Supports Defense, Aerospace and Medical Applications

**TAPE AND REEL INFORMATION**


\*All dimensions are nominal

| Device       | Package Type | Package Drawing | Pins | SPQ  | Reel Diameter (mm) | Reel Width W1 (mm) | A0 (mm) | B0 (mm) | K0 (mm) | P1 (mm) | W (mm) | Pin1 Quadrant |
|--------------|--------------|-----------------|------|------|--------------------|--------------------|---------|---------|---------|---------|--------|---------------|
| INA128U/2K5  | SOIC         | D               | 8    | 2500 | 330.0              | 12.4               | 6.4     | 5.2     | 2.1     | 8.0     | 12.0   | Q1            |
| INA128UA/2K5 | SOIC         | D               | 8    | 2500 | 330.0              | 12.4               | 6.4     | 5.2     | 2.1     | 8.0     | 12.0   | Q1            |
| INA129U/2K5  | SOIC         | D               | 8    | 2500 | 330.0              | 12.4               | 6.4     | 5.2     | 2.1     | 8.0     | 12.0   | Q1            |
| INA129UA/2K5 | SOIC         | D               | 8    | 2500 | 330.0              | 12.4               | 6.4     | 5.2     | 2.1     | 8.0     | 12.0   | Q1            |

## TAPE AND REEL BOX DIMENSIONS



\*All dimensions are nominal

| Device       | Package Type | Package Drawing | Pins | SPQ  | Length (mm) | Width (mm) | Height (mm) |
|--------------|--------------|-----------------|------|------|-------------|------------|-------------|
| INA128U/2K5  | SOIC         | D               | 8    | 2500 | 367.0       | 367.0      | 35.0        |
| INA128UA/2K5 | SOIC         | D               | 8    | 2500 | 367.0       | 367.0      | 35.0        |
| INA129U/2K5  | SOIC         | D               | 8    | 2500 | 367.0       | 367.0      | 35.0        |
| INA129UA/2K5 | SOIC         | D               | 8    | 2500 | 367.0       | 367.0      | 35.0        |



P (R-PDIP-T8)

PLASTIC DUAL-IN-LINE PACKAGE



- NOTES:
- A. All linear dimensions are in inches (millimeters).
  - B. This drawing is subject to change without notice.
  - C. Falls within JEDEC MS-001 variation BA.

D (R-PDSO-G8)

PLASTIC SMALL OUTLINE



- NOTES:
- A. All linear dimensions are in inches (millimeters).
  - B. This drawing is subject to change without notice.
  - $\triangle C$  Body length does not include mold flash, protrusions, or gate burrs. Mold flash, protrusions, or gate burrs shall not exceed 0.006 (0,15) each side.
  - $\triangle D$  Body width does not include interlead flash. Interlead flash shall not exceed 0.017 (0,43) each side.
  - E. Reference JEDEC MS-012 variation AA.

D (R-PDSO-G8)

PLASTIC SMALL OUTLINE



- NOTES:
- A. All linear dimensions are in millimeters.
  - B. This drawing is subject to change without notice.
  - C. Publication IPC-7351 is recommended for alternate designs.
  - D. Laser cutting apertures with trapezoidal walls and also rounding corners will offer better paste release. Customers should contact their board assembly site for stencil design recommendations. Refer to IPC-7525 for other stencil recommendations.
  - E. Customers should contact their board fabrication site for solder mask tolerances between and around signal pads.

## IMPORTANT NOTICE

Texas Instruments Incorporated and its subsidiaries (TI) reserve the right to make corrections, enhancements, improvements and other changes to its semiconductor products and services per JESD46, latest issue, and to discontinue any product or service per JESD48, latest issue. Buyers should obtain the latest relevant information before placing orders and should verify that such information is current and complete. All semiconductor products (also referred to herein as "components") are sold subject to TI's terms and conditions of sale supplied at the time of order acknowledgment.

TI warrants performance of its components to the specifications applicable at the time of sale, in accordance with the warranty in TI's terms and conditions of sale of semiconductor products. Testing and other quality control techniques are used to the extent TI deems necessary to support this warranty. Except where mandated by applicable law, testing of all parameters of each component is not necessarily performed.

TI assumes no liability for applications assistance or the design of Buyers' products. Buyers are responsible for their products and applications using TI components. To minimize the risks associated with Buyers' products and applications, Buyers should provide adequate design and operating safeguards.

TI does not warrant or represent that any license, either express or implied, is granted under any patent right, copyright, mask work right, or other intellectual property right relating to any combination, machine, or process in which TI components or services are used. Information published by TI regarding third-party products or services does not constitute a license to use such products or services or a warranty or endorsement thereof. Use of such information may require a license from a third party under the patents or other intellectual property of the third party, or a license from TI under the patents or other intellectual property of TI.

Reproduction of significant portions of TI information in TI data books or data sheets is permissible only if reproduction is without alteration and is accompanied by all associated warranties, conditions, limitations, and notices. TI is not responsible or liable for such altered documentation. Information of third parties may be subject to additional restrictions.

Resale of TI components or services with statements different from or beyond the parameters stated by TI for that component or service voids all express and any implied warranties for the associated TI component or service and is an unfair and deceptive business practice. TI is not responsible or liable for any such statements.

Buyer acknowledges and agrees that it is solely responsible for compliance with all legal, regulatory and safety-related requirements concerning its products, and any use of TI components in its applications, notwithstanding any applications-related information or support that may be provided by TI. Buyer represents and agrees that it has all the necessary expertise to create and implement safeguards which anticipate dangerous consequences of failures, monitor failures and their consequences, lessen the likelihood of failures that might cause harm and take appropriate remedial actions. Buyer will fully indemnify TI and its representatives against any damages arising out of the use of any TI components in safety-critical applications.

In some cases, TI components may be promoted specifically to facilitate safety-related applications. With such components, TI's goal is to help enable customers to design and create their own end-product solutions that meet applicable functional safety standards and requirements. Nonetheless, such components are subject to these terms.

No TI components are authorized for use in FDA Class III (or similar life-critical medical equipment) unless authorized officers of the parties have executed a special agreement specifically governing such use.

Only those TI components which TI has specifically designated as military grade or "enhanced plastic" are designed and intended for use in military/aerospace applications or environments. Buyer acknowledges and agrees that any military or aerospace use of TI components which have **not** been so designated is solely at the Buyer's risk, and that Buyer is solely responsible for compliance with all legal and regulatory requirements in connection with such use.

TI has specifically designated certain components as meeting ISO/TS16949 requirements, mainly for automotive use. In any case of use of non-designated products, TI will not be responsible for any failure to meet ISO/TS16949.

### Products

|                              |  |
|------------------------------|--|
| Audio                        | <a href="http://www.ti.com/audio">www.ti.com/audio</a>                               |
| Amplifiers                   | <a href="http://amplifier.ti.com">amplifier.ti.com</a>                               |
| Data Converters              | <a href="http://dataconverter.ti.com">dataconverter.ti.com</a>                       |
| DLP® Products                | <a href="http://www.dlp.com">www.dlp.com</a>   |
| DSP                          | <a href="http://dsp.ti.com">dsp.ti.com</a>   |
| Clocks and Timers            | <a href="http://www.ti.com/clocks">www.ti.com/clocks</a>                             |
| Interface                    | <a href="http://interface.ti.com">interface.ti.com</a>                               |
| Logic                        | <a href="http://logic.ti.com">logic.ti.com</a>                                       |
| Power Mgmt                   | <a href="http://power.ti.com">power.ti.com</a>                                       |
| Microcontrollers             | <a href="http://microcontroller.ti.com">microcontroller.ti.com</a>                   |
| RFID                         | <a href="http://www.ti-rfid.com">www.ti-rfid.com</a>                                 |
| OMAP Applications Processors | <a href="http://www.ti.com/omap">www.ti.com/omap</a>                                 |
| Wireless Connectivity        | <a href="http://www.ti.com/wirelessconnectivity">www.ti.com/wirelessconnectivity</a> |

### Applications

|                               |  |
|-------------------------------|--|
| Automotive and Transportation | <a href="http://www.ti.com/automotive">www.ti.com/automotive</a>                         |
| Communications and Telecom    | <a href="http://www.ti.com/communications">www.ti.com/communications</a>                 |
| Computers and Peripherals     | <a href="http://www.ti.com/computers">www.ti.com/computers</a>                           |
| Consumer Electronics          | <a href="http://www.ti.com/consumer-apps">www.ti.com/consumer-apps</a>                   |
| Energy and Lighting           | <a href="http://www.ti.com/energy">www.ti.com/energy</a>                                 |
| Industrial                    | <a href="http://www.ti.com/industrial">www.ti.com/industrial</a>                         |
| Medical                       | <a href="http://www.ti.com/medical">www.ti.com/medical</a>                               |
| Security                      | <a href="http://www.ti.com/security">www.ti.com/security</a>                             |
| Space, Avionics and Defense   | <a href="http://www.ti.com/space-avionics-defense">www.ti.com/space-avionics-defense</a> |
| Video and Imaging             | <a href="http://www.ti.com/video">www.ti.com/video</a>                                   |

### TI E2E Community

[e2e.ti.com](http://e2e.ti.com)



Компания «ЭлектроПласт» предлагает заключение долгосрочных отношений при поставках импортных электронных компонентов на взаимовыгодных условиях!

Наши преимущества:

- Оперативные поставки широкого спектра электронных компонентов отечественного и импортного производства напрямую от производителей и с крупнейших мировых складов;
- Поставка более 17-ти миллионов наименований электронных компонентов;
- Поставка сложных, дефицитных, либо снятых с производства позиций;
- Оперативные сроки поставки под заказ (от 5 рабочих дней);
- Экспресс доставка в любую точку России;
- Техническая поддержка проекта, помощь в подборе аналогов, поставка прототипов;
- Система менеджмента качества сертифицирована по Международному стандарту ISO 9001;
- Лицензия ФСБ на осуществление работ с использованием сведений, составляющих государственную тайну;
- Поставка специализированных компонентов (Xilinx, Altera, Analog Devices, Intersil, Interpoint, Microsemi, Aeroflex, Peregrine, Syfer, Eurofarad, Texas Instrument, Miteq, Cobham, E2V, MA-COM, Hittite, Mini-Circuits, General Dynamics и др.);

Помимо этого, одним из направлений компании «ЭлектроПласт» является направление «Источники питания». Мы предлагаем Вам помощь Конструкторского отдела:

- Подбор оптимального решения, техническое обоснование при выборе компонента;
- Подбор аналогов;
- Консультации по применению компонента;
- Поставка образцов и прототипов;
- Техническая поддержка проекта;
- Защита от снятия компонента с производства.



#### Как с нами связаться

**Телефон:** 8 (812) 309 58 32 (многоканальный)

**Факс:** 8 (812) 320-02-42

**Электронная почта:** [org@eplast1.ru](mailto:org@eplast1.ru)

**Адрес:** 198099, г. Санкт-Петербург, ул. Калинина, дом 2, корпус 4, литера А.