



00-9176-00X-7XX-XX6

PREFIX

SERIES

NO. OF WAYS

CODE	NO. OF WAYS
001	1
002	2
003	3

WIRE GAUGE SIZE

CODE	DESCRIPTION	ACCEPTED WIRE GAUGE	WIRE INSULATION
701	CAPPED-IDC CONNECTOR	18 AWG STRANDED	Ø 1.6-2.1
711		20 AWG STRANDED	Ø 1.6-2.1
722		22 AWG STRANDED	Ø 1.1-1.6
732		24 AWG STRANDED	Ø 1.1-1.6

Elco Europe (A Division of AVX Ltd) CONFIDENTIAL PROPRIETY
The document on this print and information therewith are PROPRIETY
to Elco Europe (A Division of AVX Ltd) and shall not be copied
or disclosed in whole or in part without Elco Europe's written consent.

COLOUR OPTION

CODE	INSULATOR COLOUR	AVAILABILITY
0	BLACK	SPECIAL ORDER
1	WHITE	STANDARD

CAP OPTIONS

CODE	CAP OPTION	DESCRIPTION	DETAILS
0	THROUGH WIRE	ALLOWS WIRE TO BE TERMINATED AT ANY POINT	REFER TO SHEETS 2 TO 4
9	WIRE STOP	TERMINATES END OF WIRE END PROTECTED BY STOP FACE	REFER TO SHEETS 5 TO 7

PLATING OPTION

CODE	DESCRIPTION
6	PURE TIN ALL OVER

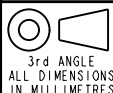
AVX

CONTROLLED RELEASE

ELCO EUROPE (A DIVISION OF AVX LTD.) CONFIDENTIAL PROPRIETARY
THE DRAWING ON THIS PRINT AND INFORMATION THEREWITH ARE PROPRIETARY TO ELCO EUROPE (A DIVISION OF AVX LTD.) AND SHALL NOT BE USED OR DISCLOSED IN WHOLE OR IN PART WITHOUT ELCO EUROPE'S WRITTEN CONSENT.

SHEET 1 OF 8

Release No.
History
102847
04.05.2012
18.05.2012
20.08.2012



ELCO

© COPYRIGHT ELCO EUROPE
NOT TO BE DISCLOSED OR COPIED
WITHOUT WRITTEN PERMISSION

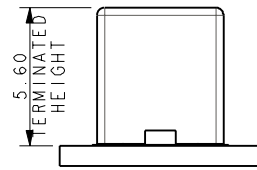
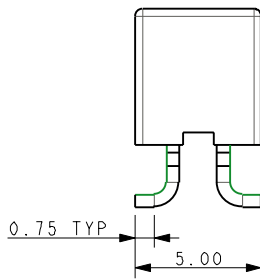
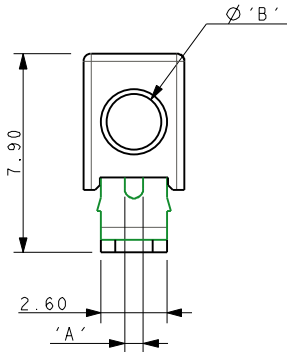
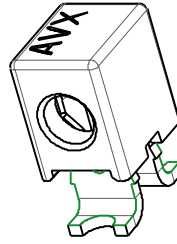
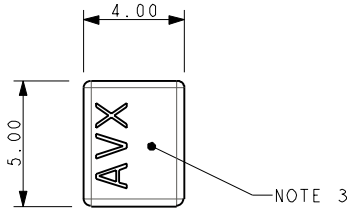
Drawn N.C.H.	Description 18-24AWG IDC WIRE TO BOARD CONNECTOR	DATE 04-Apr-12
Size CV	Part Number 00-9176-01_700S	Issue C

A

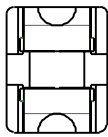
B



**18-24 AWG 1 WAY IDC CONNECTOR
THROUGH WIRE CAPPED IDC**



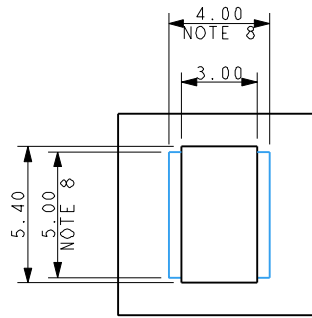
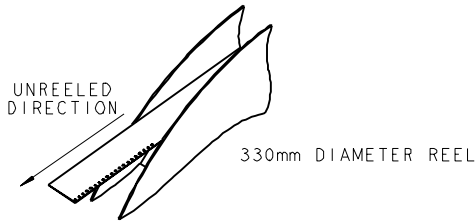
MOUNTED ON PCB



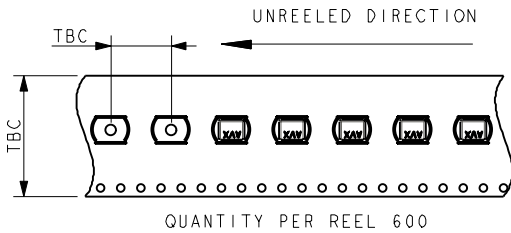
CODE	WIRE GAUGE	'A'	WIRE INSULATION	'B'
701	18AWG STRANDED	0.74	Ø 1.6-2.1	2.1
711	20AWG STRANDED	0.60	Ø 1.6-2.1	2.1
722	22AWG STRANDED	0.47	Ø 1.1-1.6	1.6
732	24AWG STRANDED	0.37	Ø 1.1-1.6	1.6

Elco Europe (A Division of AVX Ltd) CONFIDENTIAL PROPRIETY
The document on this print and information therewith are PROPRIETY
to Elco Europe (A Division of AVX Ltd) and shall not be copied
or disclosed in whole or in part without Elco Europe's written consent.

PACKING NOTES



SUGGESTED PCB LAYOUT



NOTES :-

1. 1 WAY CONNECTOR FOR IDC WIRE TO BOARD CONNECTION, PRE ASSEMBLED THROUGH WIRE CAP, CODE REFER TO SHEET 1.
2. CONTACT/CAP TO MATCH 18-24AWG STRANDED WIRE, INSULATION DIAMETER RANGE AS IN TABLE.
3. FLAT FACE ON TOP OF CAP TO AID PICK AND PLACE ASSEMBLY.
4. FOR FULL DETAILS REFER TO ELCO SPECIFICATION 201-01-138.
5. ASSEMBLY PROCEDURE, REFER TO APPLICATION NOTES 201-01-140.
6. GENERAL TOLERANCE ±0.20 UNLESS STATED.
7. PACKED IN TAPE AND REEL, QUANTITY PER REEL 600.
8. CONNECTOR OUTLINE.
9. CONTACT MATERIAL :- TIN PLATED COPPER ALLOY.
10. INSULATION MATERIAL, HIGH TEMPERATURE NYLON, GLASS FILLED. UL94 V-0, COLOUR REFER TO SHEET 1.
11. GENERAL TOLERANCE ±0.20 UNLESS STATED.

FORM-106-01-056-6 ISS 7

ELCO EUROPE (A DIVISION OF AVX LTD.) CONFIDENTIAL PROPRIETY
 THE DRAWING ON THIS PRINT AND INFORMATION THEREWITH ARE PROPRIETARY TO ELCO EUROPE (A DIVISION OF AVX LTD.) AND SHALL NOT BE USED OR DISCLOSED IN WHOLE OR IN PART WITHOUT ELCO EUROPE'S WRITTEN CONSENT.

SHEET 2 OF 8

Release No. 102847	History 04.05.2012 18.05.2012 20.08.2012
-----------------------	---



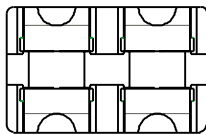
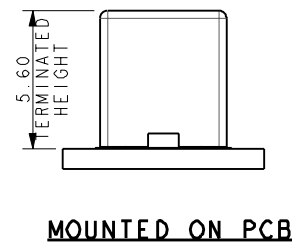
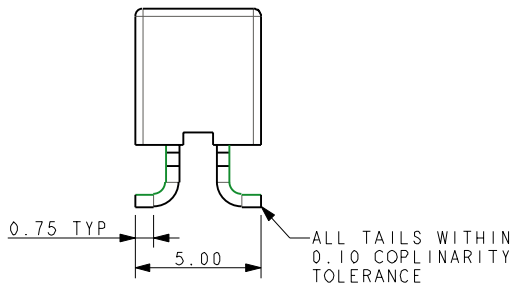
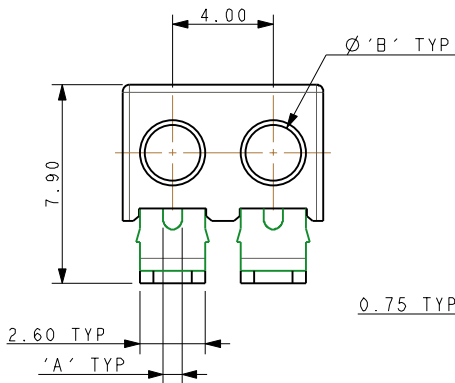
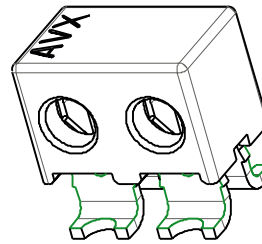
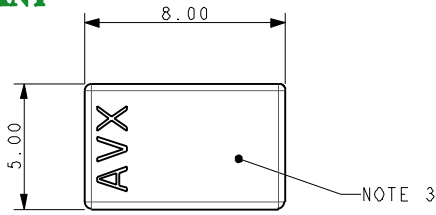
Drawn N.C.H.	Description 18-24AWG IDC WIRE TO BOARD CONNECTOR	DATE 04-Apr-12
Size CV	Part Number 00-9176-01_700S	Issue C

A

B



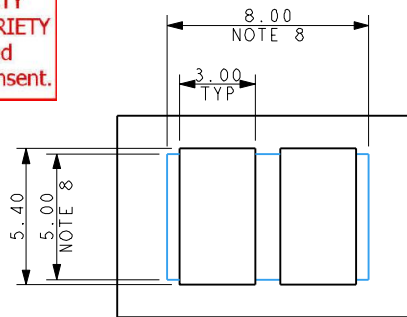
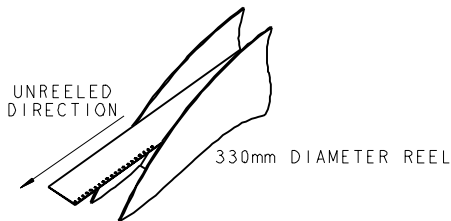
**18-24 AWG 2 WAY IDC CONNECTOR
THROUGH WIRE CAPPED IDC**



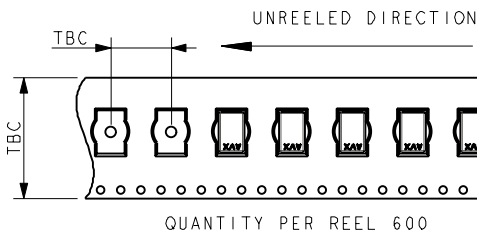
CODE	WIRE GAUGE	'A'	WIRE INSULATION	'B'
701	18AWG STRANDED	0.74	Ø 1.6-2.1	2.1
711	20AWG STRANDED	0.60	Ø 1.6-2.1	2.1
722	22AWG STRANDED	0.47	Ø 1.1-1.6	1.6
732	24AWG STRANDED	0.37	Ø 1.1-1.6	1.6

Elco Europe (A Division of AVX Ltd) CONFIDENTIAL PROPRIETY
The document on this print and information therewith are PROPRIETY
to Elco Europe (A Division of AVX Ltd) and shall not be copied
or disclosed in whole or in part without Elco Europe's written consent.

PACKING NOTES



SUGGESTED PCB LAYOUT



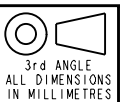
NOTES :-

- 2 WAY CONNECTOR FOR IDC WIRE TO BOARD CONNECTION, PRE ASSEMBLED THROUGH WIRE CAP, CODE REFER TO SHEET 1.
- CONTACT/CAP TO MATCH 18-24AWG STRANDED WIRE, INSULATION DIAMETER RANGE AS IN TABLE.
- FLAT FACE ON TOP OF CAP TO AID PICK AND PLACE ASSEMBLY.
- FOR FULL DETAILS REFER TO ELCO SPECIFICATION 201-01-138.
- ASSEMBLY PROCEDURE, REFER TO APPLICATION NOTES 201-01-140.
- GENERAL TOLERANCE ±0.20 UNLESS STATED.
- PACKED IN TAPE AND REEL, QUANTITY PER REEL 600.
- CONNECTOR OUTLINE.
- CONTACT MATERIAL :- TIN PLATED COPPER ALLOY.
- INSULATION MATERIAL, HIGH TEMPERATURE NYLON, GLASS FILLED. UL94 V-0, COLOUR REFER TO SHEET 1.
- GENERAL TOLERANCE ±0.20 UNLESS STATED.

ELCO EUROPE (A DIVISION OF AVX LTD.) CONFIDENTIAL PROPRIETY
THE DRAWING ON THIS PRINT AND INFORMATION THEREWITH ARE
PROPRIETARY TO ELCO EUROPE (A DIVISION OF AVX LTD.) AND
SHALL NOT BE USED OR DISCLOSED IN WHOLE OR IN PART
WITHOUT ELCO EUROPE'S WRITTEN CONSENT.

SHEET 3 OF 8

FORM-106-01-056-6 ISS 7
Release No. 102847
History 04.05.2012
18.05.2012
20.08.2012



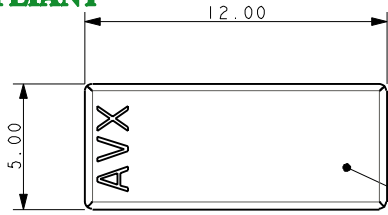
Drawn N.C.H.	Description 18-24AWG IDC WIRE TO BOARD CONNECTOR	DATE 04-Apr-12
Size CV	Part Number 00-9176-01_700S	Issue C

A

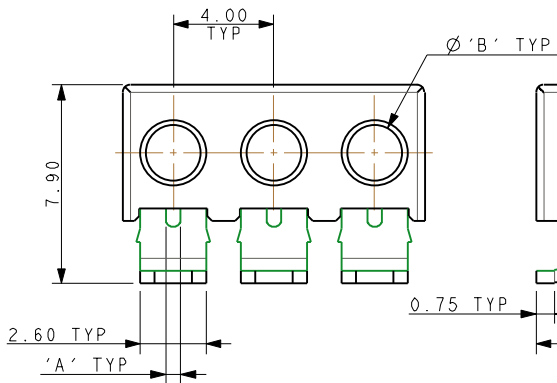
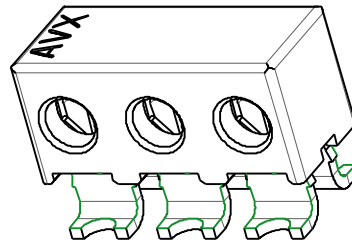
B



**18-24 AWG 3 WAY IDC CONNECTOR
THROUGH WIRE CAPPED IDC**



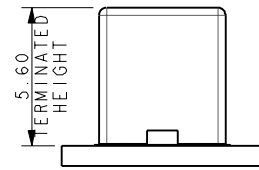
NOTES 3



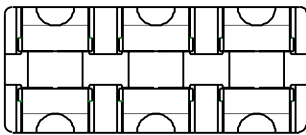
0.75 TYP

5.00

ALL TAILS WITHIN 0.10 COPLANARITY TOLERANCE



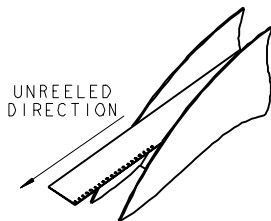
MOUNTED ON PCB



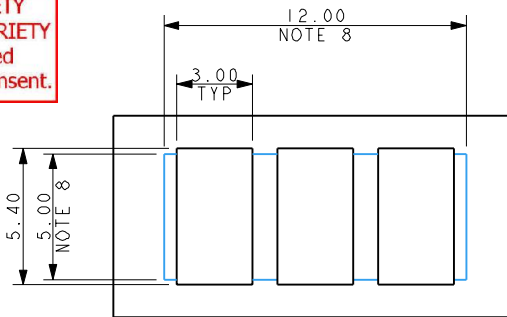
CODE	WIRE GAUGE	'A'	WIRE INSULATION	'B'
701	18AWG STRANDED	0.74	Ø1.6-2.1	2.1
711	20AWG STRANDED	0.60	Ø1.6-2.1	2.1
722	22AWG STRANDED	0.47	Ø1.1-1.6	1.6
732	24AWG STRANDED	0.37	Ø1.1-1.6	1.6

Elco Europe (A Division of AVX Ltd) CONFIDENTIAL PROPRIETY
The document on this print and information therewith are PROPRIETY to Elco Europe (A Division of AVX Ltd) and shall not be copied or disclosed in whole or in part without Elco Europe's written consent.

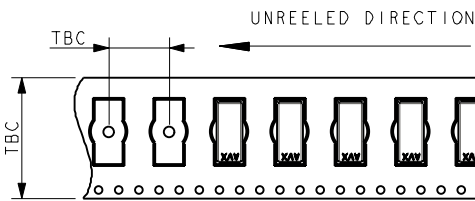
PACKING NOTES



330mm DIAMETER REEL



SUGGESTED PCB LAYOUT



QUANTITY PER REEL 600

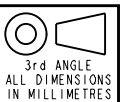
NOTES :-

- 3 WAY CONNECTOR FOR IDC WIRE TO BOARD CONNECTION, PRE ASSEMBLED THROUGH WIRE CAP, CODE REFER TO SHEET 1.
- CONTACT/CAP TO MATCH 18-24AWG STRANDED WIRE, INSULATION DIAMETER RANGE AS IN TABLE.
- FLAT FACE ON TOP OF CAP TO AID PICK AND PLACE ASSEMBLY.
- FOR FULL DETAILS REFER TO ELCO SPECIFICATION 201-01-138.
- ASSEMBLY PROCEDURE, REFER TO APPLICATION NOTES 201-01-140.
- GENERAL TOLERANCE ±0.20 UNLESS STATED.
- PACKED IN TAPE AND REEL, QUANTITY PER REEL 600.
- CONNECTOR OUTLINE.
- CONTACT MATERIAL :- TIN PLATED COPPER ALLOY.
- INSULATION MATERIAL, HIGH TEMPERATURE NYLON, GLASS FILLED.
- UL94 V-0, COLOUR REFER TO SHEET 1.
- GENERAL TOLERANCE ±0.20 UNLESS STATED.

ELCO EUROPE (A DIVISION OF AVX LTD.) CONFIDENTIAL PROPRIETY
THE DRAWING ON THIS PRINT AND INFORMATION THEREWITH ARE PROPRIETY TO ELCO EUROPE (A DIVISION OF AVX LTD.) AND SHALL NOT BE USED OR DISCLOSED IN WHOLE OR IN PART WITHOUT ELCO EUROPE'S WRITTEN CONSENT.

SHEET 4 OF 8

Release No. 102847
History 04.05.2012
18.05.2012
20.08.2012



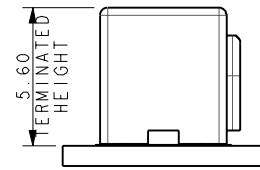
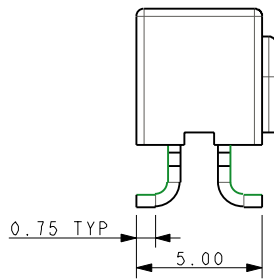
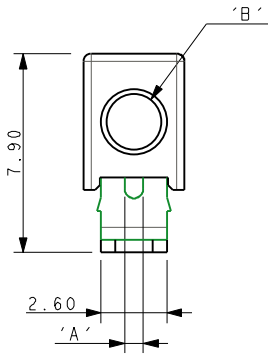
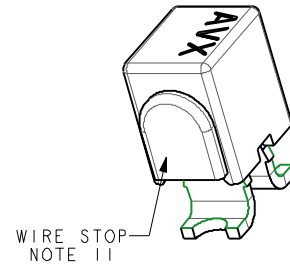
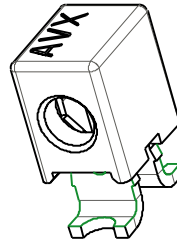
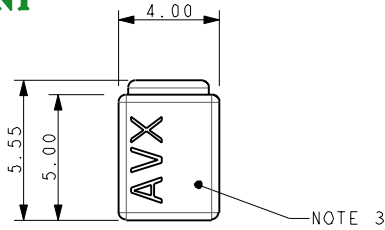
Drawn N.C.H.	Description 18-24AWG IDC WIRE TO BOARD CONNECTOR	DATE 04-Apr-12
Size CV	Part Number 00-9176-01_700S	Issue C

A

B



**18-24 AWG 1 WAY IDC CONNECTOR
WIRE STOP CAPPED-IDC**

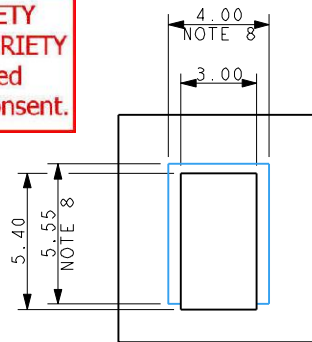
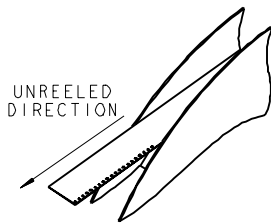


MOUNTED ON PCB

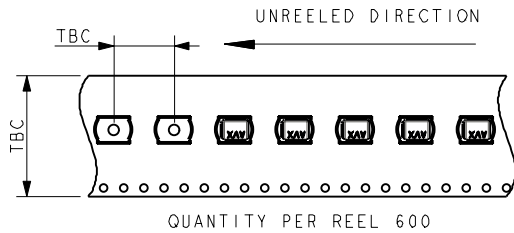
CODE	WIRE GAUGE	'A'	WIRE INSULATION	'B'
701	18AWG STRANDED	0.74	Ø 1.6-2.1	2.1
711	20AWG STRANDED	0.60	Ø 1.6-2.1	2.1
722	22AWG STRANDED	0.47	Ø 1.1-1.6	1.6
732	24AWG STRANDED	0.37	Ø 1.1-1.6	1.6

Elco Europe (A Division of AVX Ltd) CONFIDENTIAL PROPRIETY
The document on this print and information therewith are PROPRIETY
to Elco Europe (A Division of AVX Ltd) and shall not be copied
or disclosed in whole or in part without Elco Europe's written consent.

PACKING NOTES



SUGGESTED PCB LAYOUT



NOTES :-

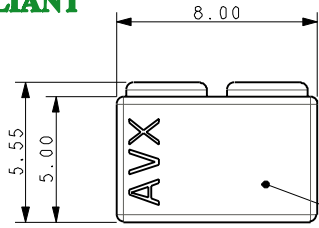
1. 1 WAY CONNECTOR FOR IDC WIRE TO BOARD CONNECTION, PRE ASSEMBLED WIRE STOP CAP, CODE REFER TO SHEET 1.
2. CONTACT/CAP TO MATCH 18-24AWG STRANDED WIRE, INSULATION DIAMETER RANGE AS IN TABLE.
3. FLAT FACE ON TOP OF CAP TO AID PICK AND PLACE ASSEMBLY.
4. FOR FULL DETAILS REFER TO ELCO SPECIFICATION 201-01-138.
5. ASSEMBLY PROCEDURE, REFER TO APPLICATION NOTES 201-01-140.
6. GENERAL TOLERANCE ±0.20 UNLESS STATED.
7. PACKED IN TAPE AND REEL, QUANTITY PER REEL 600.
8. CONNECTOR OUTLINE.
9. CONTACT MATERIAL :- TIN PLATED COPPER ALLOY.
10. INSULATION MATERIAL, HIGH TEMPERATURE NYLON, GLASS FILLED, UL94 V-0, COLOUR REFER TO SHEET 1.
11. WIRE STOP CAP PROTECTS END OF WIRE.
12. GENERAL TOLERANCE ±0.20 UNLESS STATED.

ELCO EUROPE (A DIVISION OF AVX LTD.) CONFIDENTIAL PROPRIETY
 THE DRAWING ON THIS PRINT AND INFORMATION THEREWITH ARE PROPRIETY TO ELCO EUROPE (A DIVISION OF AVX LTD.) AND SHALL NOT BE USED OR DISCLOSED IN WHOLE OR IN PART WITHOUT ELCO EUROPE'S WRITTEN CONSENT.

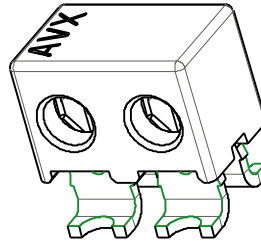
Release No. History 102847 04.05.2012 18.05.2012 20.08.2012	 3rd ANGLE ALL DIMENSIONS IN MILLIMETRES	 © COPYRIGHT ELCO EUROPE NOT TO BE DISCLOSED OR COPIED WITHOUT WRITTEN PERMISSION	Drawn N.C.H.	Description 18-24AWG IDC WIRE TO BOARD CONNECTOR	DATE 04-Apr-12
			Size CV	Part Number 00-9176-01_700S	Issue C



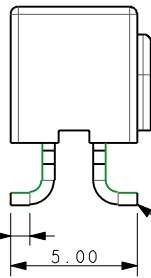
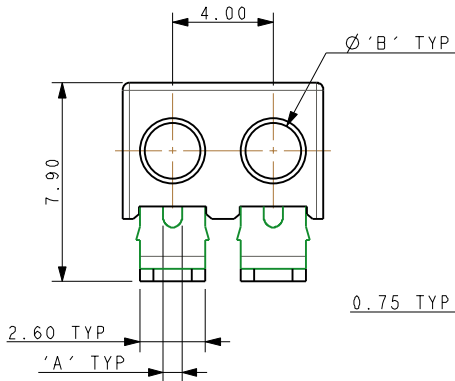
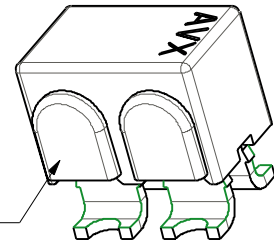
**18-24 AWG 2 WAY IDC CONNECTOR
WIRE STOP CAPPED IDC**



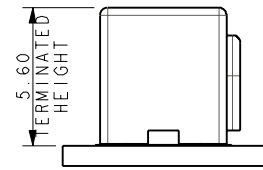
NOTE 3



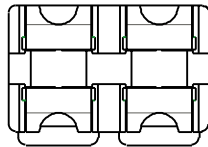
WIRE STOP
NOTE 11



ALL TAILS WITHIN
0.10 COPLANARITY
TOLERANCE



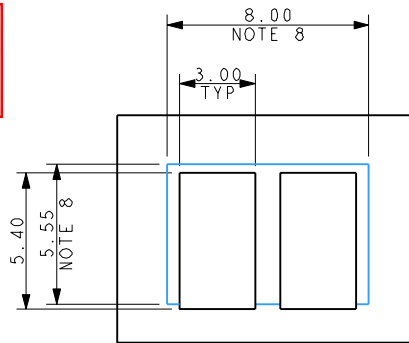
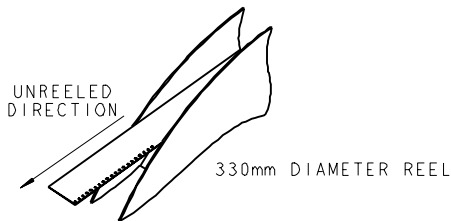
MOUNTED ON PCB



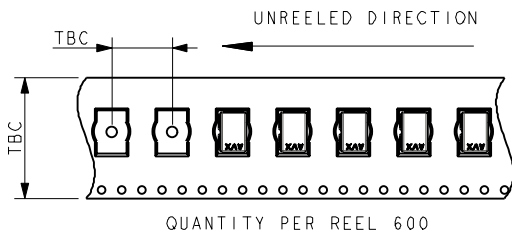
CODE	WIRE GAUGE	'A'	WIRE INSULATION	'B'
701	18AWG STRANDED	0.74	Ø 1.6-2.1	2.1
711	20AWG STRANDED	0.60	Ø 1.6-2.1	2.1
722	22AWG STRANDED	0.47	Ø 1.1-1.6	1.6
732	24AWG STRANDED	0.37	Ø 1.1-1.6	1.6

Elco Europe (A Division of AVX Ltd) CONFIDENTIAL PROPRIETY
The document on this print and information therewith are PROPRIETY
to Elco Europe (A Division of AVX Ltd) and shall not be copied
or disclosed in whole or in part without Elco Europe's written consent.

PACKING NOTES



SUGGESTED PCB LAYOUT



NOTES :-

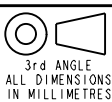
- 2 WAY CONNECTOR FOR IDC WIRE TO BOARD CONNECTION, PRE ASSEMBLED WIRE STOP CAP, CODE REFER TO SHEET 1.
- CONTACT/CAP TO MATCH 18-24AWG STRANDED WIRE, INSULATION DIAMETER RANGE AS IN TABLE.
- FLAT FACE ON TOP OF CAP TO AID PICK AND PLACE ASSEMBLY.
- FOR FULL DETAILS REFER TO ELCO SPECIFICATION 201-01-138.
- ASSEMBLY PROCEDURE, REFER TO APPLICATION NOTES 201-01-140.
- GENERAL TOLERANCE ±0.20 UNLESS STATED.
- PACKED IN TAPE AND REEL, QUANTITY PER REEL 600.
- CONNECTOR OUTLINE.
- CONTACT MATERIAL :- TIN PLATED COPPER ALLOY.
- INSULATION MATERIAL, HIGH TEMPERATURE NYLON, GLASS FILLED. UL94 V-0, COLOUR REFER TO SHEET 1.
- WIRE STOP CAP PROTECTS END OF WIRE.
- GENERAL TOLERANCE ±0.20 UNLESS STATED.

SHEET 6 OF 8

FORM-106-01-056-6 ISS 7

ELCO EUROPE (A DIVISION OF AVX LTD.) CONFIDENTIAL PROPRIETY
THE DRAWING ON THIS PRINT AND INFORMATION THEREWITH ARE
PROPRIETY TO ELCO EUROPE (A DIVISION OF AVX LTD.) AND
SHALL NOT BE USED OR DISCLOSED IN WHOLE OR IN PART
WITHOUT ELCO EUROPE'S WRITTEN CONSENT.

Release No.
History
102847
04.05.2012
18.05.2012
20.08.2012



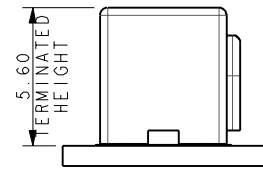
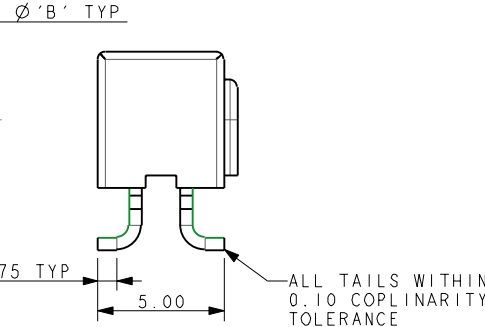
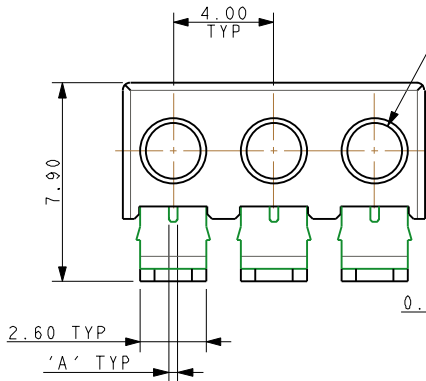
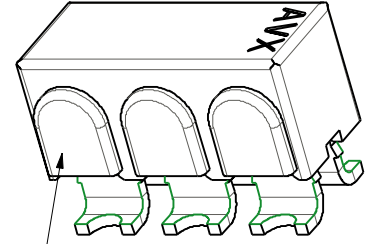
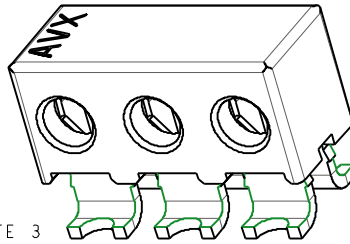
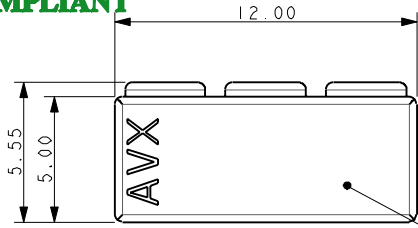
Drawn N.C.H.	Description 18-24AWG IDC WIRE TO BOARD CONNECTOR	DATE 04-Apr-12
Size CV	Part Number 00-9176-01_700S	Issue C

A

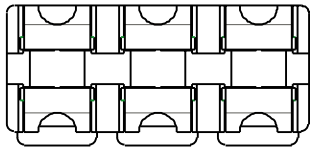
B



**18-24 AWG 3 WAY IDC CONNECTOR
WIRE STOP CAPPED IDC**



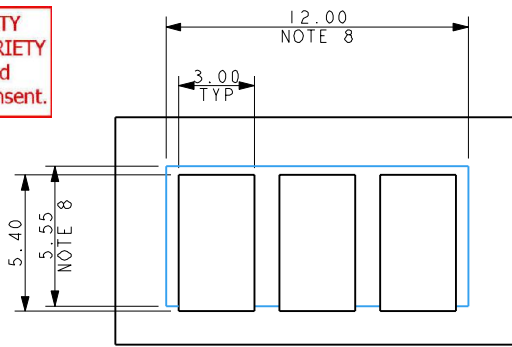
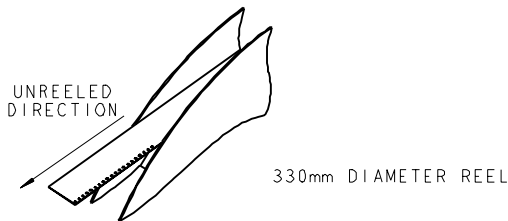
MOUNTED ON PCB



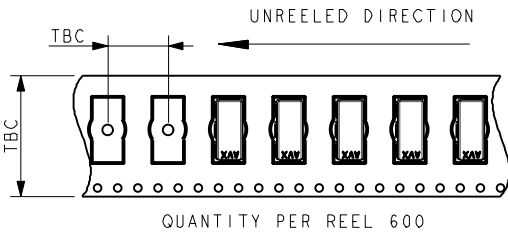
CODE	WIRE GAUGE	'A'	WIRE INSULATION	'B'
701	18AWG STRANDED	0.74	Ø 1.6-2.1	2.1
711	20AWG STRANDED	0.60	Ø 1.6-2.1	2.1
722	22AWG STRANDED	0.47	Ø 1.1-1.6	1.6
732	24AWG STRANDED	0.37	Ø 1.1-1.6	1.6

Elco Europe (A Division of AVX Ltd) CONFIDENTIAL PROPRIETY
The document on this print and information therewith are PROPRIETY to Elco Europe (A Division of AVX Ltd) and shall not be copied or disclosed in whole or in part without Elco Europe's written consent.

PACKING NOTES



SUGGESTED PCB LAYOUT



NOTES :-

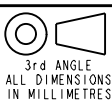
- 3 WAY CONNECTOR FOR IDC WIRE TO BOARD CONNECTION, PRE ASSEMBLED WIRE STOP CAP, CODE REFER TO SHEET 1.
- CONTACT/CAP TO MATCH 18-24AWG STRANDED WIRE, INSULATION DIAMETER RANGE AS IN TABLE.
- FLAT FACE ON TOP OF CAP TO AID PICK AND PLACE ASSEMBLY.
- FOR FULL DETAILS REFER TO ELCO SPECIFICATION 201-01-138.
- ASSEMBLY PROCEDURE, REFER TO APPLICATION NOTES 201-01-140.
- GENERAL TOLERANCE ±0.20 UNLESS STATED.
- PACKED IN TAPE AND REEL, QUANTITY PER REEL 600.
- CONNECTOR OUTLINE.
- CONTACT MATERIAL :- TIN PLATED COPPER ALLOY.
- INSULATION MATERIAL, HIGH TEMPERATURE NYLON, GLASS FILLED. UL94 V-0, COLOUR REFER TO SHEET 1.
- WIRE STOP CAP PROTECTS END OF WIRE.
- GENERAL TOLERANCE ±0.20 UNLESS STATED.

SHEET 7 OF 8

FORM-106-01-056-6 ISS 7

ELCO EUROPE (A DIVISION OF AVX LTD.) CONFIDENTIAL PROPRIETY
THE DRAWING ON THIS PRINT AND INFORMATION THEREWITH ARE PROPRIETY TO ELCO EUROPE (A DIVISION OF AVX LTD.) AND SHALL NOT BE USED OR DISCLOSED IN WHOLE OR IN PART WITHOUT ELCO EUROPE'S WRITTEN CONSENT.

Release No.
History
102847
04.05.2012
18.05.2012
20.08.2012



Drawn N.C.H.	Description 18-24AWG IDC WIRE TO BOARD CONNECTOR	DATE 04-Apr-12
Size CV	Part Number 00-9176-01_700S	Issue C

A

B

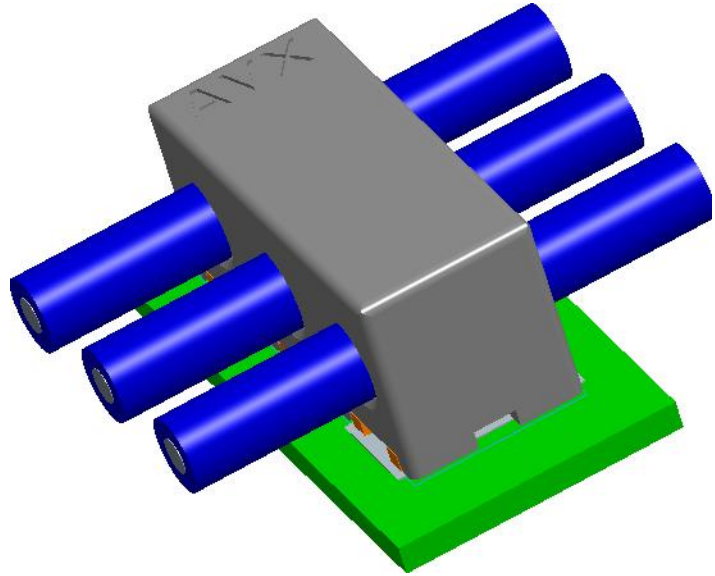
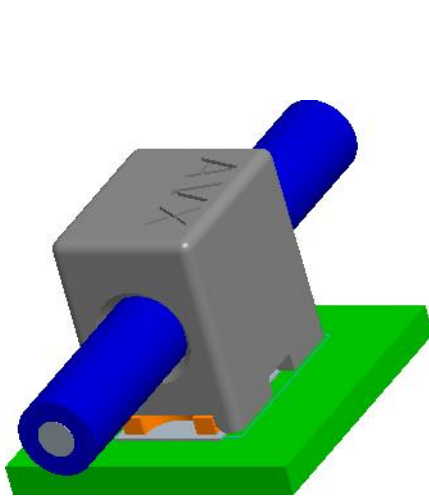
A

B

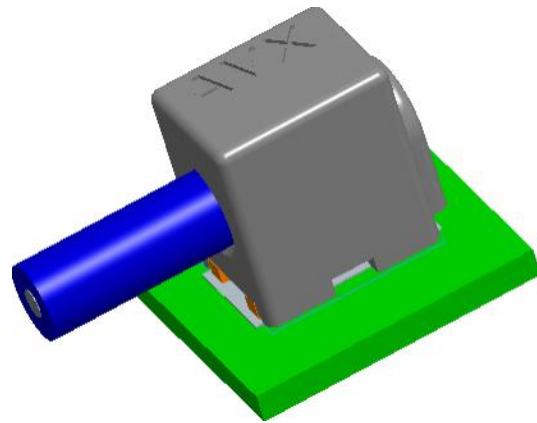
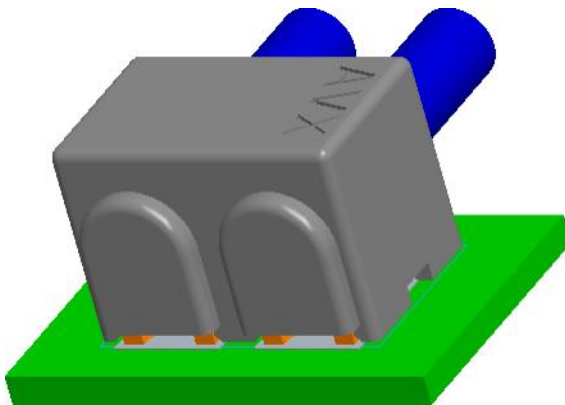


18-24 AWG ASSEMBLED CAPPED IDC CONNECTORS

Elco Europe (A Division of AVX Ltd) CONFIDENTIAL PROPRIETY
 The document on this print and information therewith are PROPRIETY
 to Elco Europe (A Division of AVX Ltd) and shall not be copied
 or disclosed in whole or in part without Elco Europe's written consent.



TYPICAL THROUGH WIRE ASSEMBLIES



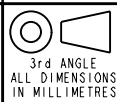
TYPICAL WIRE STOP ASSEMBLIES

FORM-106-01-036-6 ISS 7

ELCO EUROPE (A DIVISION OF AVX LTD.) CONFIDENTIAL PROPRIETY
 THE DRAWING ON THIS PRINT AND INFORMATION THEREWITH ARE
 PROPRIETARY TO ELCO EUROPE (A DIVISION OF AVX LTD.) AND
 SHALL NOT BE USED OR DISCLOSED IN WHOLE OR IN PART
 WITHOUT ELCO EUROPE'S WRITTEN CONSENT.

SHEET 8 OF 8

Release No. 102847 History 04.05.2012 18.05.2012 20.08.2012
--



Drawn N.C.H.
Size CV

Description 18-24AWG IDC WIRE TO BOARD CONNECTOR
Part Number 00-9176-01_700S

DATE 04-Apr-12
Issue C

A

B



Компания «ЭлектроПласт» предлагает заключение долгосрочных отношений при поставках импортных электронных компонентов на взаимовыгодных условиях!

Наши преимущества:

- Оперативные поставки широкого спектра электронных компонентов отечественного и импортного производства напрямую от производителей и с крупнейших мировых складов;
- Поставка более 17-ти миллионов наименований электронных компонентов;
- Поставка сложных, дефицитных, либо снятых с производства позиций;
- Оперативные сроки поставки под заказ (от 5 рабочих дней);
- Экспресс доставка в любую точку России;
- Техническая поддержка проекта, помощь в подборе аналогов, поставка прототипов;
- Система менеджмента качества сертифицирована по Международному стандарту ISO 9001;
- Лицензия ФСБ на осуществление работ с использованием сведений, составляющих государственную тайну;
- Поставка специализированных компонентов (Xilinx, Altera, Analog Devices, Intersil, Interpoint, Microsemi, Aeroflex, Peregrine, Syfer, Eurofarad, Texas Instrument, Miteq, Cobham, E2V, MA-COM, Hittite, Mini-Circuits, General Dynamics и др.);

Помимо этого, одним из направлений компании «ЭлектроПласт» является направление «Источники питания». Мы предлагаем Вам помощь Конструкторского отдела:

- Подбор оптимального решения, техническое обоснование при выборе компонента;
- Подбор аналогов;
- Консультации по применению компонента;
- Поставка образцов и прототипов;
- Техническая поддержка проекта;
- Защита от снятия компонента с производства.



Как с нами связаться

Телефон: 8 (812) 309 58 32 (многоканальный)

Факс: 8 (812) 320-02-42

Электронная почта: org@eplast1.ru

Адрес: 198099, г. Санкт-Петербург, ул. Калинина, дом 2, корпус 4, литера А.