

# BR-400AN

## Easily Construct Wireless Mesh Network with Enterprise Security



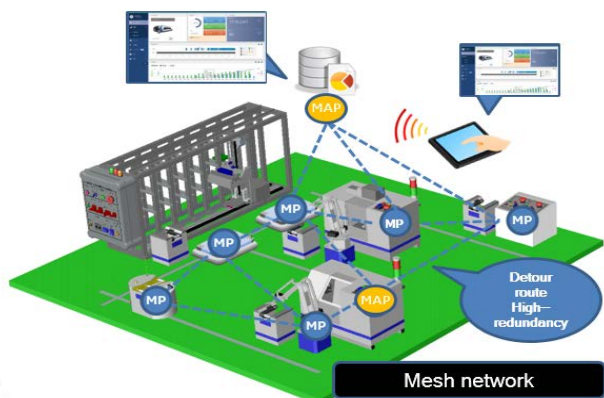
### Supports Infrastructure and Peer to Peer Multiconnect Mode

The BR-400AN is a mesh network system that allows the user to easily construct a wireless LAN in a place where there is no network. It supports IEEE802.11s mesh network. This 802.11a/b/g/n mesh WLAN converter automatically establishes a wireless LAN between devices. With this bridge, users can set up wireless LAN environment in offices, health care sites and plants where IoT and ICT are actively involved in transfer of data.

The BR-400AN can transmit data at 130Mbps with just 7ms round-trip timing. It supports IEEE802.1X authentication to guarantee enterprise-level security in office and business networks. It supports industry leading standards for authentication and encryption including WPA, WPA2, and most commonly used EAP types.

#### Mesh Technology

BR-400AN supports IEEE802.11s making it easier to construct a mesh network at a low cost compared with the traditional mechanism. The mesh network automatically reconfigures the communication route according to the installation environment. Approx 1 sec of network configuration time, mesh proves effective in transmitting data in factory and office environment.



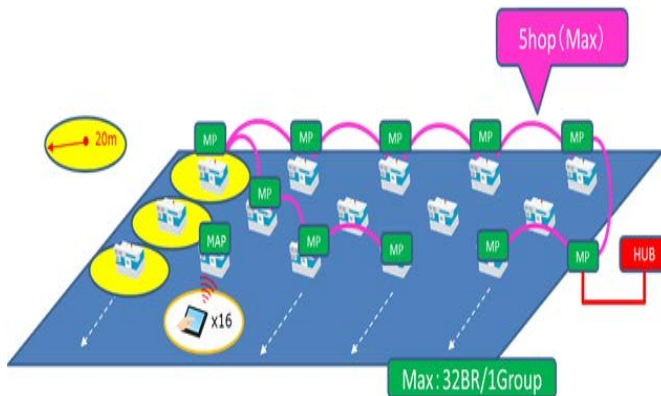
#### Network Redundancy & loop detection

BR-400AN supports the RSTP (Rapid Spanning Tree Protocol). AMC Mesh network can suppress loop network, and it enables fast convergence. Automatic recovery time up to 6 sec, when backbone is down.

It also helps in easy area expansion with backup just by placing the bridge where they are needed. It does not require AP but can horizontally expand the area.

#### Multi-hop Support

Up to 32 units constitutes to make one mesh network group, with the maximum of 5 hops. Data is transmitted farthest by overlapping hops, connecting data with multiple stages and multiple routes.

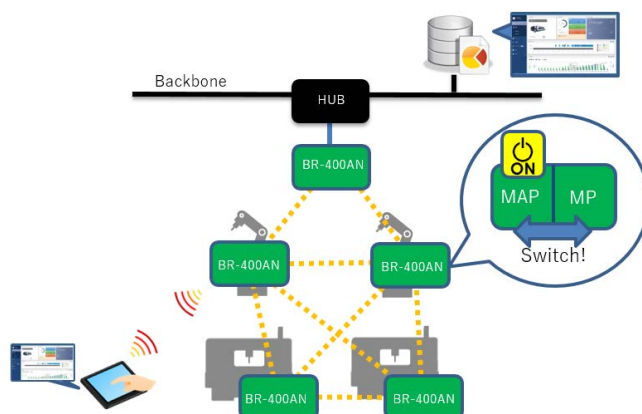


#### Mesh Point Mode & Mesh Access Point Mode

Two modes of operation are available in BR-400AN depending on the application environment:

**Mesh Point Mode** is when a bridge is connected to another bridge. Up to 8 units can be connected.

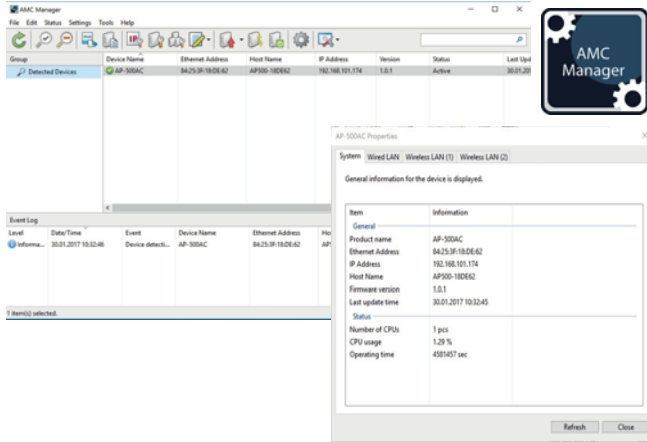
**Mesh Access Point Mode** is when a device is connected to a bridge to access. Up to 16 units can be connected



### AMC Manager Support

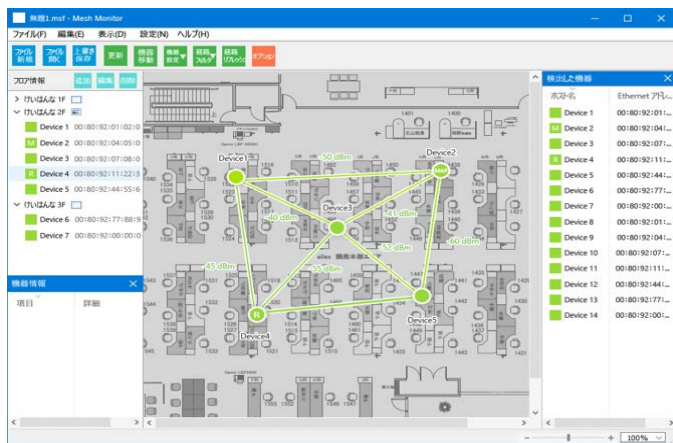
The BR-400AN wireless bridge is compatible with the optional device management software "AMC Manager".

With this software, network administrators can execute the functions required for device management of Silex networking products from one point, for example monitor device status, configuration settings, update firmware, automatically record device operating logs and restart the devices.



### Mesh Monitor (AMC Manager® plug-in)

Mesh Monitor is AMC Manager® plug-in option to visualize mesh network composed of BR-400AN. This application aids the user with setup and operation management. User can map BR-400AN and check communication path, connection link status between terminals, radio field strength at a glance.



### Enterprise security

BR-400AN supports enterprise-class security which makes it ideal for business networks.

- IEEE 802.1X authentication compliant
- Access point SSID Stealth compatible
- MAC address filtering function
- AES encryption

### Specifications

Product name	BR-400AN
LAN	
Interface	RJ-45 x 1 Port
Standard	10BASE-T/100BASE-TX/1000BASE-T
WLAN	
Standard	IEEE 802.11a/b/g/n
Security	WAP (64/128 bit) WPA/WPA2-PSK (TKIP-AES) WPA2-PSK(AES) 802.1x (EAP-TLS/EAP-TTLS/PEAP) SSID Stealth MAC address filter SAE(AES)
Channels	2.4GHz : 1 13ch 5GHz : 36 64ch, 100 140ch
Setup	Push button
Others	
Storage Condition	Temperature: -10 to 50 °C Humidity: 20 to 90% RH (no condensation)
Operating Condition	Temperature: 0 to 40 °C Humidity: 20 to 80% RH (no condensation)
Power	7 W (DC 5 V 1.4 A)
Dimension	100 mm x 100 mm x 25.5 mm
Weight	148g
Supplied Items	Main body, AC adapter, LAN cable, Setup guide, GPL notice sheet, warranty card
Acquisition standards	VCCI RoHS compliant
Device Mode	Mesh Point Mesh Access Point
Supported Browser	Internet Explorer 8 or later Safari 4.0.0 or later

silex technology is a registered trademark of silex technology, Inc. Other product or brand names may be registered trademarks or trademarks of their respective owners. Technical information and specifications are subject to change without notice. © 2018 silex technology, Inc. All rights reserved.

### silex global sales & support locations



**US Office**  
**silex technology america, Inc.**  
 +1-801-748-1199  
 US toll free 866-765-8761  
 www.silexamerica.com  
 sales@silexamerica.com

**Europe Office**  
**silex technology europe, GmbH**  
 +49-2151-65009-10  
 Germany toll free 0800-7453938  
 www.silexeurope.com  
 contact@silexeurope.com

**India Office**  
**silex technology india, Pvt. Ltd.,**  
 +91-44-43033234  
 www.silex-india.com  
 support@silex-india.com

**Corporate Headquarters**  
**silex technology, Inc.**  
 +81-774-98-3781  
 www.silex.jp  
 support@silex.jp



Компания «ЭлектроПласт» предлагает заключение долгосрочных отношений при поставках импортных электронных компонентов на взаимовыгодных условиях!

Наши преимущества:

- Оперативные поставки широкого спектра электронных компонентов отечественного и импортного производства напрямую от производителей и с крупнейших мировых складов;
- Поставка более 17-ти миллионов наименований электронных компонентов;
- Поставка сложных, дефицитных, либо снятых с производства позиций;
- Оперативные сроки поставки под заказ (от 5 рабочих дней);
- Экспресс доставка в любую точку России;
- Техническая поддержка проекта, помощь в подборе аналогов, поставка прототипов;
- Система менеджмента качества сертифицирована по Международному стандарту ISO 9001;
- Лицензия ФСБ на осуществление работ с использованием сведений, составляющих государственную тайну;
- Поставка специализированных компонентов (Xilinx, Altera, Analog Devices, Intersil, Interpoint, Microsemi, Aeroflex, Peregrine, Syfer, Eurofarad, Texas Instrument, Miteq, Cobham, E2V, MA-COM, Hittite, Mini-Circuits, General Dynamics и др.);

Помимо этого, одним из направлений компании «ЭлектроПласт» является направление «Источники питания». Мы предлагаем Вам помощь Конструкторского отдела:

- Подбор оптимального решения, техническое обоснование при выборе компонента;
- Подбор аналогов;
- Консультации по применению компонента;
- Поставка образцов и прототипов;
- Техническая поддержка проекта;
- Защита от снятия компонента с производства.



#### Как с нами связаться

**Телефон:** 8 (812) 309 58 32 (многоканальный)

**Факс:** 8 (812) 320-02-42

**Электронная почта:** [org@eplast1.ru](mailto:org@eplast1.ru)

**Адрес:** 198099, г. Санкт-Петербург, ул. Калинина, дом 2, корпус 4, литера А.