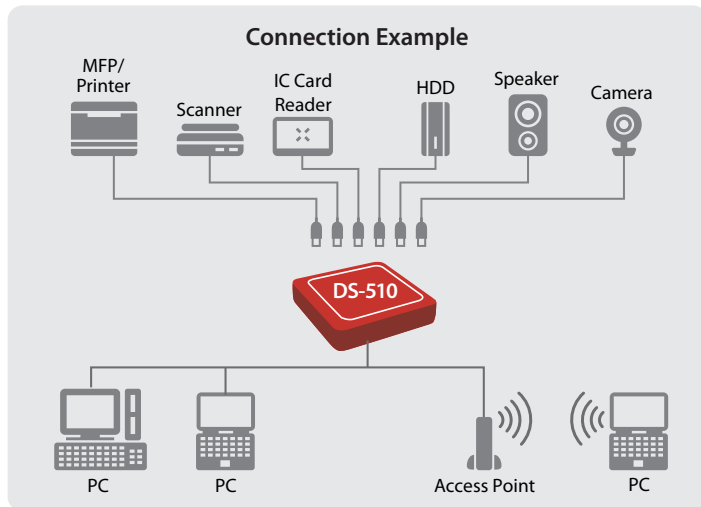


## DS-510 Gigabit USB Device Server

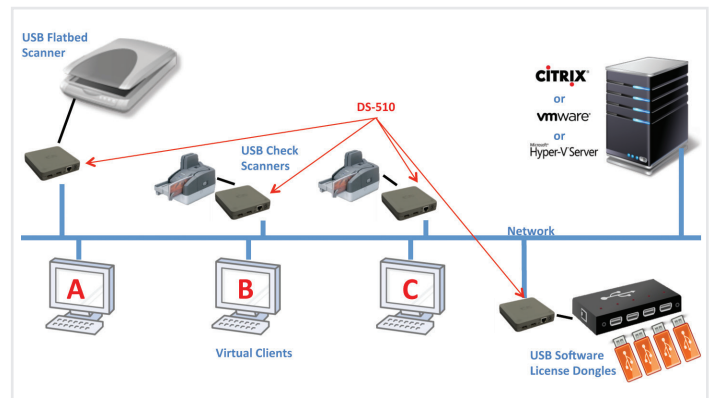


### Easily Connect and Share Virtually Any USB Device on a Network

The Silex DS-510 is designed to easily connect and share USB devices over a network. Printers, Scanners, Disk Drives, Card Readers, or virtually any other USB device can now be enabled with network capability. It allows flexibility to place the USB device anywhere on the network instead of needing to be attached directly to the computer, and multiple users can access the USB device.



- **Best Compatibility** with a variety of USB devices over the network, including USB dongles, disk drives, flash drives and other storage media, scanners, printers, digital cameras, USB sound adapters, USB displays, input devices, mixing consoles and many more.
- **Virtual environments:** The USB Device Server is compatible with virtualization programs and environments such as Citrix, VMware, Microsoft Terminal Server and Hyper-V.



#### Key Features:

- **High-Performance** data throughput due to optimized performance and Gigabit connection. Extremely powerful CPU (800MHz) and two USB Hi-Speed ports (TypeA).
- The **Printer AutoConnect** feature works with the Windows or Macintosh printing system and allows multiple computers to easily share a USB printer over the network by making an automatic connection to the printer. Then it will automatically disconnect after the print job is sent making the printer available to the next user.
- **Isochronous Transfer Mode** USB devices such as Webcams or USB sound cards, which require ongoing data transmission in real time, can also be used in the network environment.
- **No special drivers or applications** are needed to use the USB devices. Drivers and applications that worked when the USB device is directly connected to the computer will continue to work across the network connected to the DS-510. The included Silex SX-Virtual Link software precisely emulates a USB connection on a Windows or Macintosh computer, and then redirects the packets over the network to the USB port of the DS-510.
- **Silex designs, develops, and manufactures** the hardware and software for this product. Silex can provide engineering and customization services including re-branding, OEM, or complete custom product design. A Software Developer Kit (SDK) is available for the client and server software for integration with any application. Please contact Silex for more information.



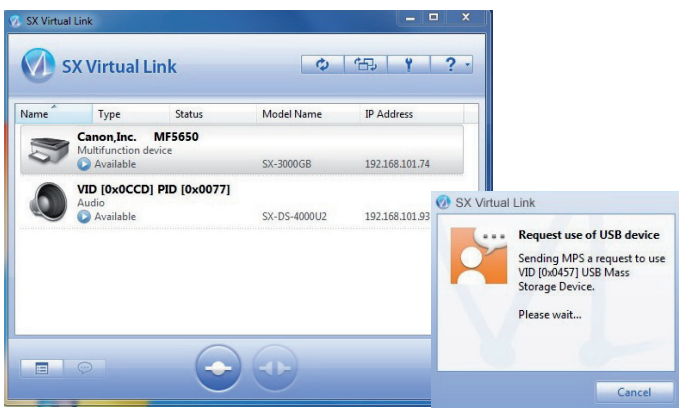
## DS-510 Gigabit USB Device Server

### What is SX Virtual Link?

Silex has created software for Windows or Macintosh computers called SX-Virtual Link which precisely emulates a USB port on each of the computers that want to access the USB device over the network. The computers think that they are communicating with the device via a direct USB connection, but they are actually communicating over the network with a Silex USB Device Server product.

### What is a USB Device Server?

It is a network device that uses Silex USB Virtual Link technology to allow USB devices to be connected and shared on a network. Virtually any USB device can be used on a network, just as though they were connected with a USB cable.



The software discovers USB Device Servers and USB devices on the network, and the search results are shown in an overview on the main screen.

If another user is already using a shared USB device, a request for use can be sent. It can also be specified that failure to respond to this request will automatically lead to a disconnection after a timeout. This makes it easy to share any USB device over a network in home and business environments.

### Other USB Device Servers:

#### SX-DS-3000WN

USB Device Server up to 300Mbps  
802.11 b/g/n Wireless LAN

- 10 BASE-T/100 BASE-T/1000 BASE-T (automatic detection)
- IEEE802.11 b/g/n
- 2x USB 2.0 Hi-Speed-Ports



Win Mac

### Specifications:

Product Name	DS-510
Wired LAN	10BASE-T, 100BASE-TX, 1000BASE-T
Device Interface	2 x USB 2.0 Hi-Speed (type A)*
Protocols Supported	TCP/IP
Operating Systems Supported	Windows 8/8.1 (32/64bit), Windows 7 (32/64bit), Windows Vista (32/64bit), Windows XP (32bit), Windows 2000, Windows Server 2012/2008/2003 (32/64bit), Mac OS X (PowerPC: Ver 10.3.x to Ver 10.5.x, Intel: Ver 10.4.4 to Ver 10.10.x)
Configuration	Setup utility (Device Server Setup), Web browser, TELNET
Dimensions	W:100mm x D:100mm x H:25.5mm (body only)
Weight	96g (main body only)
Power Supply	AC 100-120V 50/60Hz, DC 5V 2.5A
Maximum Power Consumption	2.5W (DC5V 0.5A) not including USB bus power
Regulatory Compliance	VCCI Class B / FCC Class B / CE Class B

\* Silex designs, develops, and manufactures the hardware and software for this product. Silex can provide engineering and customization services including re-branding, OEM, or complete custom product design. A Software Developer Kit (SDK) is available for the client and server software for integration with any application. Please contact Silex for more information.

### About Silex Technology America, Inc.

Silex Technology builds on more than 40 years of hardware and software connectivity know-how and IP, custom design development experience, and in-house manufacturing capabilities, bringing value to customers with a foundation of technical expertise. With relentless attention to quality, exclusive access to Qualcomm Atheros expertise, and strategic partnerships with leading semiconductor providers, Silex Technology is the global leader in reliable Wi-Fi connectivity for products ranging from a medical device to a document imaging product to a video or digital display. With Silex Technology, customers get a single vendor that provides hardware and software support from design through manufacturing for successful product after successful product. For more information, please visit [www.silexamerica.com](http://www.silexamerica.com).

silex technology is a registered trademark of silex technology, Inc. Other product or brand names may be registered trademarks or trademarks of their respective owners. Technical information and specifications are subject to change without notice. © silex technology, Inc. All rights reserved.

### silex global marketing & support locations



**USA**  
**silex technology america, Inc.**  
+1-801-747-0656  
[www.silexamerica.com](http://www.silexamerica.com)  
[contact@silexamerica.com](mailto:contact@silexamerica.com)

**Japan**  
**silex technology, Inc.**  
+81-774-98-3782  
[www.silex.jp](http://www.silex.jp)  
[support@silex.jp](mailto:support@silex.jp)

**Europe**  
**silex technology europe GmbH**  
+49-2151-65009-10  
[www.silexeurope.com](http://www.silexeurope.com)  
[contact@silexeurope.com](mailto:contact@silexeurope.com)



silex technology, Inc.

silex technology, Inc.  
Design & Manufacturing Center

PN: 141-20133-100  
REV A. 20150220



Компания «ЭлектроПласт» предлагает заключение долгосрочных отношений при поставках импортных электронных компонентов на взаимовыгодных условиях!

Наши преимущества:

- Оперативные поставки широкого спектра электронных компонентов отечественного и импортного производства напрямую от производителей и с крупнейших мировых складов;
- Поставка более 17-ти миллионов наименований электронных компонентов;
- Поставка сложных, дефицитных, либо снятых с производства позиций;
- Оперативные сроки поставки под заказ (от 5 рабочих дней);
- Экспресс доставка в любую точку России;
- Техническая поддержка проекта, помощь в подборе аналогов, поставка прототипов;
- Система менеджмента качества сертифицирована по Международному стандарту ISO 9001;
- Лицензия ФСБ на осуществление работ с использованием сведений, составляющих государственную тайну;
- Поставка специализированных компонентов (Xilinx, Altera, Analog Devices, Intersil, Interpoint, Microsemi, Aeroflex, Peregrine, Syfer, Eurofarad, Texas Instrument, Miteq, Cobham, E2V, MA-COM, Hittite, Mini-Circuits, General Dynamics и др.);

Помимо этого, одним из направлений компании «ЭлектроПласт» является направление «Источники питания». Мы предлагаем Вам помощь Конструкторского отдела:

- Подбор оптимального решения, техническое обоснование при выборе компонента;
- Подбор аналогов;
- Консультации по применению компонента;
- Поставка образцов и прототипов;
- Техническая поддержка проекта;
- Защита от снятия компонента с производства.



#### Как с нами связаться

**Телефон:** 8 (812) 309 58 32 (многоканальный)

**Факс:** 8 (812) 320-02-42

**Электронная почта:** [org@eplast1.ru](mailto:org@eplast1.ru)

**Адрес:** 198099, г. Санкт-Петербург, ул. Калинина, дом 2, корпус 4, литера А.