

4

3

2

1

THIS DRAWING IS UNPUBLISHED.

RELEASED FOR PUBLICATION

© COPYRIGHT

ALL RIGHTS RESERVED.

LOC DIST


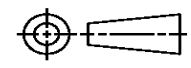
REVISIONS

P	LTR	DESCRIPTION	DATE	DWN	APVD
	B1	ECR-13-013579	28AUG2013	XZ	LZ

# REPLACED BY OCEAN STYLE APPLICATOR PART NUMBER 2151520-2

FOR REPLACEMENT PARTS FOR APPLICATOR 1157168  
REFER TO ADDITIONAL PAGE(S). SPARE PARTS KIT (IF LISTED)  
WILL REMAIN AVAILABLE.

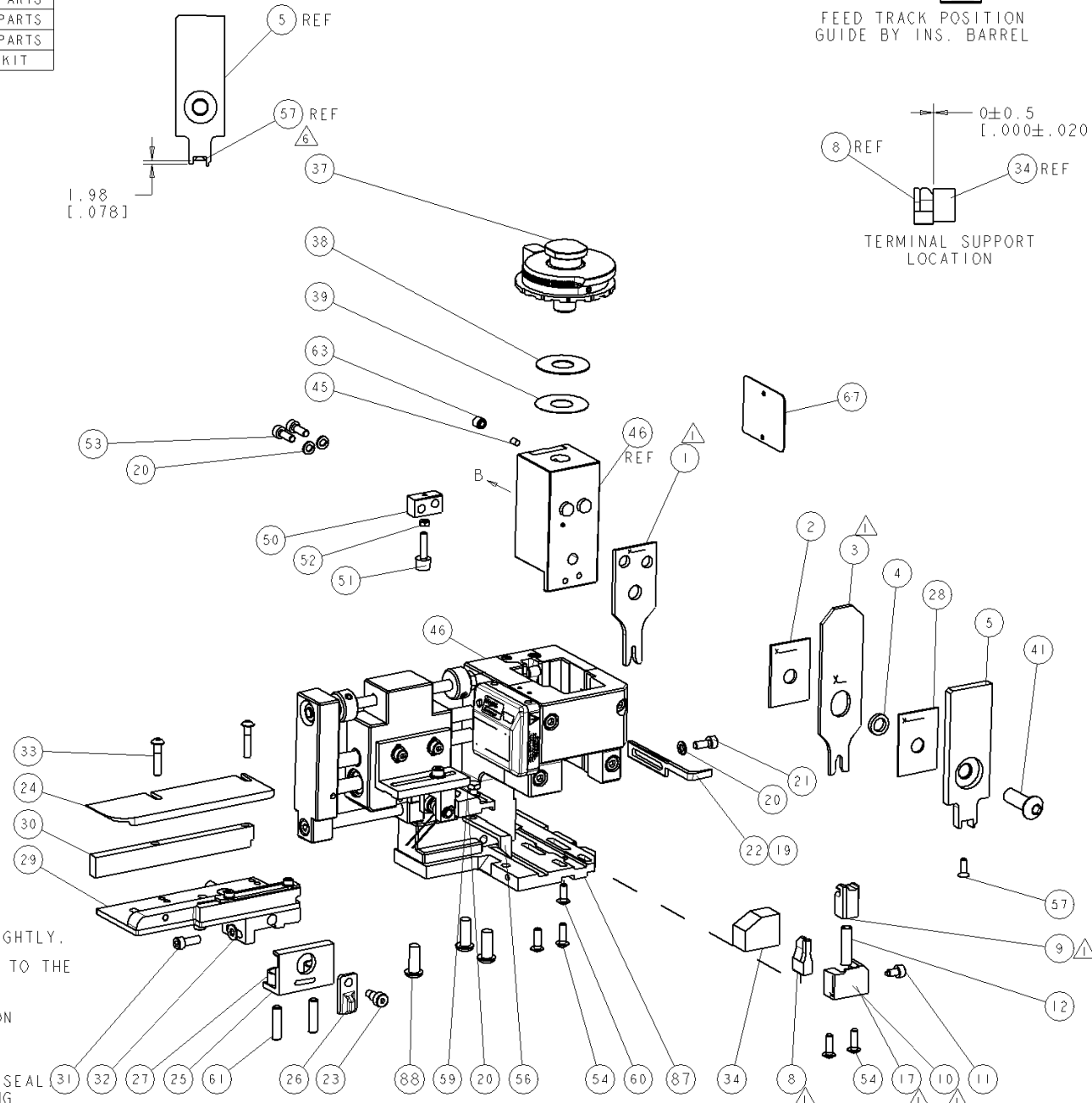
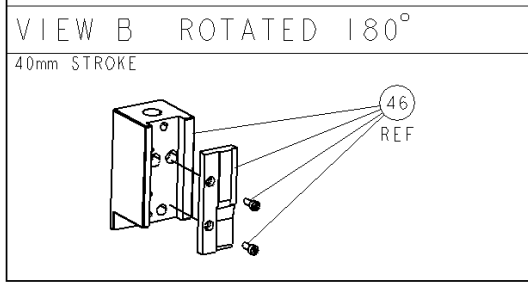
THE REPLACEMENT OCEAN STYLE APPLICATOR HAS THE  
SAME TERMINATOR/PRESS INTERFACE AS APPLICATOR  
1157168

THIS DRAWING IS A CONTROLLED DOCUMENT.		DWN X.ZHAO	 TE Connectivity		
DIMENSIONS:		CHK L.ZHANG			
		APVD L.ZHANG	NAME FINE ADJUST SIDE FEED HDI APPLICATOR		
TOLERANCES UNLESS OTHERWISE SPECIFIED:		PRODUCT SPEC	APPLICATION SPEC		
0 PLC ± 1 PLC ± 2 PLC ± 3 PLC ± 4 PLC ± ANGLES ±		WEIGHT	SIZE A3	CAGE CODE	DRAWING NO C-1157168
MATERIAL		CUSTOMER DRAWING	SCALE	SHEET 1 OF 2	REV B1

PART NUMBER	REV	TERMINATOR	FEED TYPE	DESCRIPTION
1157168-1	B	LEADMAKER	PNEUMATIC FEED	CUTS CARRIER
1157168-2	B	BENCH	PNEUMATIC FEED	CUTS CARRIER
1157168-6	B	LEADMAKER	PNEUMATIC FEED	CONTINUOUS CARRIER
7-1157168-1	B	LEADMAKER	PNEUMATIC FEED	-1 AND SPARE PARTS
7-1157168-2	B	BENCH	PNEUMATIC FEED	-2 AND SPARE PARTS
7-1157168-6	B	LEADMAKER	PNEUMATIC FEED	-6 AND SPARE PARTS
7-1157168-7	A	-	-	SPARE PARTS KIT

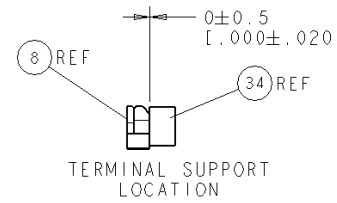
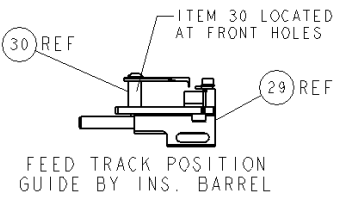
CRIMP DATA		TE TERMINAL	TE CRIMP SPECS
TERMINAL NAME: HPF 1.5 MM SENSORKONTACT			
CRIMP	SIZE	TYPE	RANGE
WIRE	2.03 [ .080 IN]	F	0.75-1.00 mm <sup>2</sup>
INSUL	3.30 [ .130 IN]	0	2.60 [ .102 IN]
WIRE STRIP LENGTH	4.20-4.60 [ .165-.181 IN]		APPL INSTRUCTIONS 411-3283
TERMINAL APPL SPEC	114-18912		FEED 9.00 [ .354 IN]
TERMINALS APPLIED			
TE TERM PN	TE SEAL PN		
1563625	964972 (A)		
	963530 (B)		
WIRE SIZE	CRIMP HEIGHT	REF	SETTINGS
1.00mm <sup>2</sup> (A)	1.11 ± 0.05 [ .044 ± .002 IN]		C3
0.75mm <sup>2</sup> (B)	1.02 ± 0.05 [ .040 ± .002 IN]		D0

- RECOMMENDED SPARE PARTS.
- 2. GREASE RAM, CAM, CAM FOLLOWER AND FEED ROD LIGHTLY.
- CERTAIN TERMINALS REQUIRE LUBRICATION. REFER TO THE TERMINATING UNITS DOCUMENTATION.
- 4. LUBRICATE DAILY PER THE APPLICATOR INSTRUCTION SHEET SUPPLIED WITH THE APPLICATOR.
- THIS APPLICATOR APPLIES TERMINAL WITH A SEAL. INSULATION DIA QUOTED IS OUTSIDE DIAMETER OF SEAL. WIRE INSULATION DIA IS DEPENDENT ON SEAL BEING APPLIED. SEAL PN 964972 INS. DIA RANGE IS 1.9-2.4mm. SEAL PN 963530 INS. DIA RANGE IS 1.4-1.9mm.
- APPLY TORQ-SEAL IN ALLEN SOCKET TO FILL HOLE AFTER FLAT HD HAS BEEN ADJUSTED TO CORRECT HEIGHT AT QUALIFICATION. APPLY #1-23419-5 LOC-TITE TO THREADS.



**\* WARNING**  
ON INSTALLATION, SET WIRE DISC TO LARGEST WIRE SIZE SETTING. USE OF SETTINGS BELOW MIN. REQUIRED CRIMP HEIGHT SETTING WILL CAUSE DAMAGE TO CRIMP TOOLING.

ITEM NO	DESCRIPTION	ITEM NO	DESCRIPTION
88	SCR, BTN SKT HD CAP M6X16.0 W/NYLOK	88	SCR, BTN SKT HD CAP M6X16.0 W/NYLOK
87	PLATE, BASE	87	PLATE, BASE
86		86	
85		85	
84		84	
83		83	
81		81	
80		80	
79		79	
78		78	
77		77	
76		76	
75		75	
74		74	
-77	PART NO	-77	DESCRIPTION



SET UP GAGE  
458637-3

REV	DESCRIPTION	DATE	BY	APPD
A	RELEASED	SIMAR2008	BH	BH
A1	ECR-10-008955	SIMAR2010	KH	TE
B	REVISED ECR-10-008180	21APR2010	C.C.	S.X

ITEM NO	DESCRIPTION	ITEM NO	DESCRIPTION
73		73	
72		72	
71	DOCUMENTATION PACKAGE	71	DOCUMENTATION PACKAGE
70		70	
69		69	
68		68	
67	PLATE, IDENTIFICATION	67	PLATE, IDENTIFICATION
66		66	
65		65	
64		64	
63	SCR, SET, CUP POINT M6 X 6.0	63	SCR, SET, CUP POINT M6 X 6.0
62		62	
61	SCR, SET, FLT POINT M5 X 20.0	61	SCR, SET, FLT POINT M5 X 20.0
60	SCR, BTN SKT HD CAP (M4 X 10.0)	60	SCR, BTN SKT HD CAP (M4 X 10.0)
59	SCR, HEX HD CAP M4 X 8.0	59	SCR, HEX HD CAP M4 X 8.0
58		58	
57	SCR, FLT SKT HD CAP M3 X 10.0	57	SCR, FLT SKT HD CAP M3 X 10.0
56	PAWL, FEED	56	PAWL, FEED
55		55	
54	SCR, BTN SKT HD CAP (M4 X 12.0)	54	SCR, BTN SKT HD CAP (M4 X 12.0)
53	SCR, SKT HD CAP M4 X 12.0	53	SCR, SKT HD CAP M4 X 12.0
52	NUT, HEX, REG M3	52	NUT, HEX, REG M3
51	BUMPER, HOLD DOWN	51	BUMPER, HOLD DOWN
50	SPACER, TONKER	50	SPACER, TONKER
49		49	
48		48	
47		47	
46	ASSEMBLY, AIR FEED	46	ASSEMBLY, AIR FEED
45	PLUG, NYLON	45	PLUG, NYLON
44		44	
43		43	
42		42	
41	SCR, BTN SKT HD CAP (M8 X 25.0)	41	SCR, BTN SKT HD CAP (M8 X 25.0)
40		40	
39	SHIM SUB-ASSY	39	SHIM SUB-ASSY
38	SHIM	38	SHIM
37	FINE ADJUST HEAD ASSEMBLY	37	FINE ADJUST HEAD ASSEMBLY
36		36	
35		35	
34	SUPPORT, TERMINAL	34	SUPPORT, TERMINAL
33	SCR, BTN SKT HD CAP (M4 X 20.0)	33	SCR, BTN SKT HD CAP (M4 X 20.0)
32	WASHER, FLAT, REG M4	32	WASHER, FLAT, REG M4
31	SCR, SKT HD CAP M4 X 12.0	31	SCR, SKT HD CAP M4 X 12.0
30	SPACER, STRIP GUIDE	30	SPACER, STRIP GUIDE
29	STRIP GUIDE ASSEMBLY	29	STRIP GUIDE ASSEMBLY
28	SPACER, CRIMPER	28	SPACER, CRIMPER
27	SPRING, COMPRESSION	27	SPRING, COMPRESSION
26	LEVER, DRAG RELEASE	26	LEVER, DRAG RELEASE
25	DRAG, TERMINAL	25	DRAG, TERMINAL
24	PLATE, STRIP GUIDE	24	PLATE, STRIP GUIDE
23	SCR, SKT HD SHLDR 5.0 DIA X 6.0	23	SCR, SKT HD SHLDR 5.0 DIA X 6.0
22	STRIPPER	22	STRIPPER
21	SCR, SKT HD CAP M4 X 10.0	21	SCR, SKT HD CAP M4 X 10.0
20	WASHER, SPRG LOCK, REG M4	20	WASHER, SPRG LOCK, REG M4
19	STRIPPER	19	STRIPPER
18		18	
17	SHEAR HOLDER, FRONT	17	SHEAR HOLDER, FRONT
16		16	
15		15	
14		14	
13		13	
12	SPRING, COMPRESSION	12	SPRING, COMPRESSION
11	STOP, SHEAR	11	STOP, SHEAR
10	SHEAR HOLDER, FRONT, CUT	10	SHEAR HOLDER, FRONT, CUT
9	FLOATING SHEAR, FRONT	9	FLOATING SHEAR, FRONT
8	ANVIL, COMBINATION, SPECIAL	8	ANVIL, COMBINATION, SPECIAL
7		7	
6		6	
5	DEPRESSOR, SHEAR	5	DEPRESSOR, SHEAR
4	BLOCK, CRIMPER SPACER	4	BLOCK, CRIMPER SPACER
3	CRIMPER, INSULATION	3	CRIMPER, INSULATION
2	SPACER, CRIMPER	2	SPACER, CRIMPER
1	CRIMPER, WIRE PREMIUM	1	CRIMPER, WIRE PREMIUM

ITEM NO	DESCRIPTION	ITEM NO	DESCRIPTION
88	SCR, BTN SKT HD CAP M6X16.0 W/NYLOK	88	SCR, BTN SKT HD CAP M6X16.0 W/NYLOK
87	PLATE, BASE	87	PLATE, BASE
86		86	
85		85	
84		84	
83		83	
81		81	
80		80	
79		79	
78		78	
77		77	
76		76	
75		75	
74		74	
-77	PART NO	-77	DESCRIPTION



Компания «ЭлектроПласт» предлагает заключение долгосрочных отношений при поставках импортных электронных компонентов на взаимовыгодных условиях!

Наши преимущества:

- Оперативные поставки широкого спектра электронных компонентов отечественного и импортного производства напрямую от производителей и с крупнейших мировых складов;
- Поставка более 17-ти миллионов наименований электронных компонентов;
- Поставка сложных, дефицитных, либо снятых с производства позиций;
- Оперативные сроки поставки под заказ (от 5 рабочих дней);
- Экспресс доставка в любую точку России;
- Техническая поддержка проекта, помощь в подборе аналогов, поставка прототипов;
- Система менеджмента качества сертифицирована по Международному стандарту ISO 9001;
- Лицензия ФСБ на осуществление работ с использованием сведений, составляющих государственную тайну;
- Поставка специализированных компонентов (Xilinx, Altera, Analog Devices, Intersil, Interpoint, Microsemi, Aeroflex, Peregrine, Syfer, Eurofarad, Texas Instrument, Miteq, Cobham, E2V, MA-COM, Hittite, Mini-Circuits, General Dynamics и др.);

Помимо этого, одним из направлений компании «ЭлектроПласт» является направление «Источники питания». Мы предлагаем Вам помощь Конструкторского отдела:

- Подбор оптимального решения, техническое обоснование при выборе компонента;
- Подбор аналогов;
- Консультации по применению компонента;
- Поставка образцов и прототипов;
- Техническая поддержка проекта;
- Защита от снятия компонента с производства.



#### Как с нами связаться

**Телефон:** 8 (812) 309 58 32 (многоканальный)

**Факс:** 8 (812) 320-02-42

**Электронная почта:** [org@eplast1.ru](mailto:org@eplast1.ru)

**Адрес:** 198099, г. Санкт-Петербург, ул. Калинина, дом 2, корпус 4, литера А.