

# LTM9003 Digital Predistortion Receiver Subsystem

## DESCRIPTION

Demonstration circuit 1437B is an evaluation board featuring Linear Technology Corporation's LTM<sup>®</sup>9003 12-Bit Predistortion Receiver Subsystem. DC1437 demonstrates good circuit layout techniques and recommended external circuitry for optimal system performance.

DC1437 comes with Linear Technology's 12-bit LTM9003 receiver subsystem installed. The board includes output LVDS buffers. DC1437 plugs into the DC890 Data Acqui-

sition demo board and the output can be easily analyzed with Linear Technology's PScope<sup>™</sup> data processing software, which is available for no charge on our website at <http://www.linear.com/software>.

**Design files for this circuit board are available at <http://www.linear.com/demo>**

LT, LT, LTC, LTM, Linear Technology and the Linear logo are registered trademarks and PScope is a trademark of Linear Technology Corporation. All other trademarks are the property of their respective owners.

## CONNECTION DIAGRAM

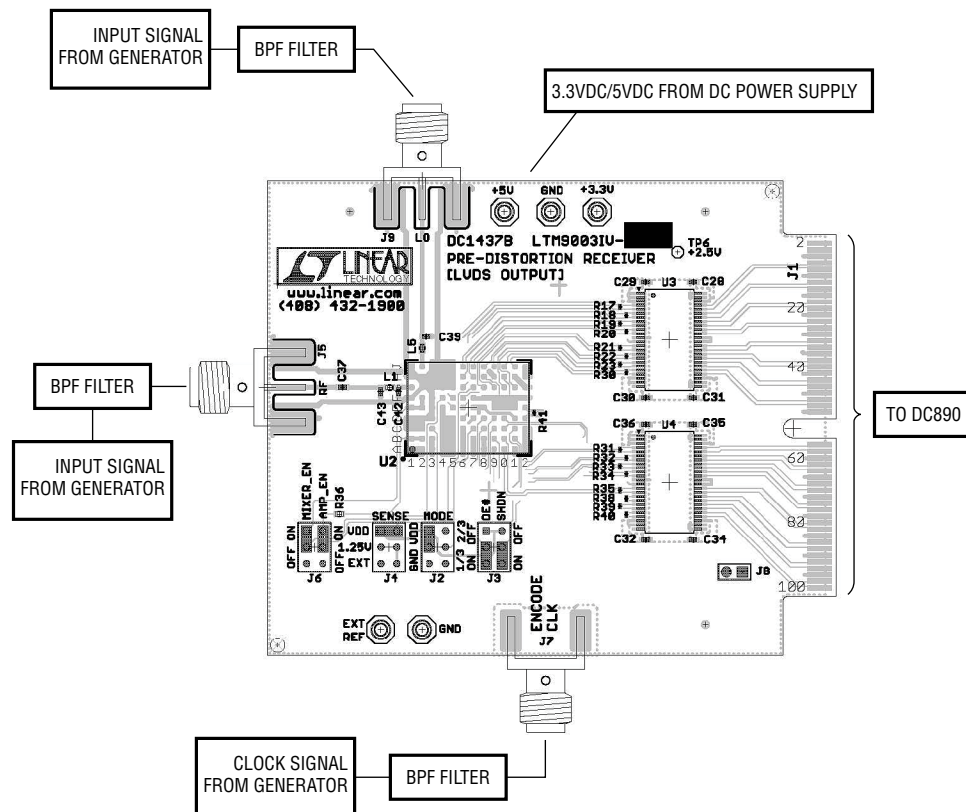


Figure 1. DC1437B Connection Diagram

## QUICK START PROCEDURE

Validating the performance of the LTM9003 is simple with DC1437, and requires only two input sources, a clock source, a computer, and a lab power supply. Note the RF and LO inputs are matched for 1.4GHz to 2.2GHz, and 0.9GHz to 3GHz, respectively. Refer to the schematic in Figure 4 for other matching configurations to accommodate other frequency ranges. Refer to Figure 1 for proper board evaluation equipment setup and follow the procedure below:

1. Plug the DC1437B to the DC890 USB High Speed Data Collection Board using edge connector P1.
2. Connect the DC890 to a host PC with a standard USB A/B cable. Note the DC890B will also require an external 6V, 1A power supply when receiving LVDS format signals.
3. Run the PScope software (PScope.exe version K76 or later) which can be downloaded from [www.linear.com/designtools/software](http://www.linear.com/designtools/software). Complete software documentation is available from the Help menu. Updates can be downloaded from the Tools menu. Check for updates periodically as new features may be added.
4. The PScope software should recognize the DC1437B and configure itself automatically. See Figure 3 for the default configuration settings.
5. Connect the power supply as shown in Figure 1. There are onboard low noise voltage regulators that provide the supply voltage for the DC1437. Note that the LTM9003-AA requires a 3.3V supply voltage for the mixer, whereas the LTM9003-AB requires 5V. As such, only the DC1437B-AB board requires 5V as well as 3.3V input; the DC1437B-AA board can be powered from 3.3V only. The entire board and all components share a common ground. The power supply should still be a low noise lab power supply capable of supplying at least 1A.
6. Provide an encode clock to the ADC via SMA connector J7. Use a low-phase-noise clock source such as a filtered RF signal generator or a high quality clock oscillator. Note that, similar to having a noisy input, a high jitter (high phase noise) encode clock will degrade the signal-to-noise ratio (SNR) of the system.
7. Apply an RF input signal to the board. For best results, use a low distortion, low noise signal generator with sufficient filtering to avoid degrading the performance of the receiver.
8. Apply an LO input signal to the board. Note that the difference in frequency between this signal and the RF signal will be the IF frequency resulting at the IF filter and ADC input.
9. Click the Collect button (see Figure 2) to begin acquiring data. The Collect button then should change to Pause. To stop data acquisition, click the Pause button.

**Table 1. DC1437B Assembly Options**

ASSEMBLY VERSION	U2 PART NUMBER	MAX CONVERSION RATE	NUMBER OF BITS	MIXER SUPPLY VOLTAGE	RF FREQUENCY RANGE
DC1437B-AA	LTM9003-AA	250Msps	12	3.3V	400MHz TO 3800MHz
DC1437B-AB	LTM9003-AB	250Msps	12	5V	400MHz TO 3700MHz

## DC1437B CONNECTORS AND JUMPERS

### Connector Definitions

**J5** – RF Board RF Signal Input. Impedance matched to 50Ω for use with lab signal generators.

**J7** – CLK Board Clock Input. Impedance matched to 50Ω. Drive with a low phase-noise clock oscillator or filtered sine wave signal source.

**J9** – LO Board LO Signal Input. Impedance matched to 50Ω for use with lab signal generators.

### Jumper Definitions

**J2** – MODE Sets the output format and clock duty stabilizer. The default setting is  $V_{DD}$ . This enables 2's complement format and disables the clock duty cycle stabilizer.

**J3** – SHDN/ $\overline{OE}$  Enables/disables the ADC. The default setting for both jumpers is ON.

**J4** – SENSE Sets the SENSE mode. The default setting is  $V_{DD}$ . This selects the internal reference and a  $\pm 1V$  input range at the ADC.

**J6** – MIXER/AMP ENABLE Enables the internal mixer and amplifiers. The default setting for both jumpers is ON.

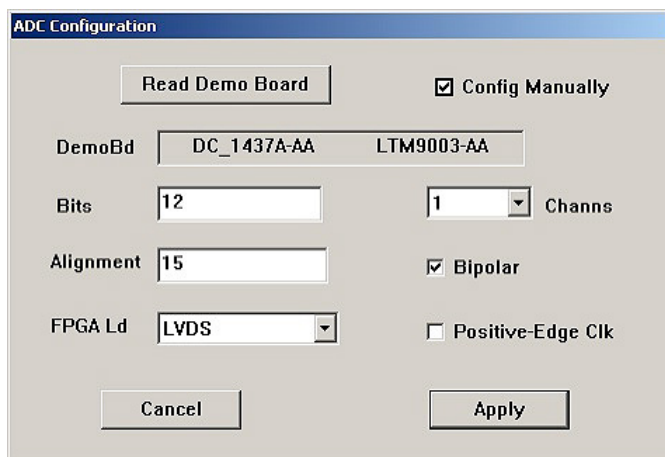


Figure 3. PScope Configuration Menu

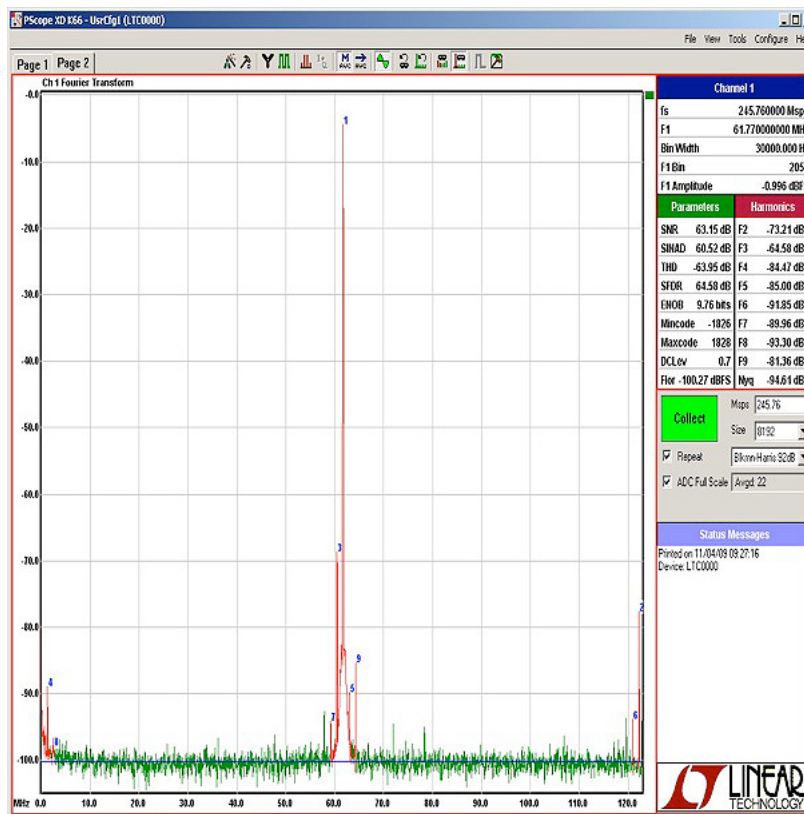


Figure 2. PScope Screen Shot

# DEMO MANUAL DC1437B

## PARTS LIST

ITEM	QTY	REFERENCE	PART DESCRIPTION	MANUFACTURER/PART NUMBER
<b>Required Circuit Components</b>				
1	1	T2	BALUN, 1:1, SMT, SM-22	MACOM/MABA-007159-000000
2	0	C37, C42	DNI	
3	1	C43	CAP, NPO, 1.0pF, 50V, 0.25pF, 0402	AVX/04025A1R0CAT2A
4	1	C39	CAP, NPO, 0.5pF, 50V, 0.25pF, 0402	AVX/04025A0R5CAT2A
5	1	C4	CAP, NPO, 8.2pF, 50V, 0.25pF, 0402	AVX/04025A8R2CAT2A
6	3	C1, C2, C44	CAP, X5R, 0.01µF, 16V, 10%, 0402	AVX/0402YC103KAT
7	10	C19, C27-32, C34-36	CAP, X5R, 0.1µF, 10V, 10%, 0402	AVX/0402ZD104KAT
8	1	C45	CAP, X5R, 10µF, 6.3V, 20%, 0805	AVX/08056D106MAT
9	2	C5, C6	CAP, X5R, 4.7µF, 10V, 20%, 0805	AVX/0805ZD475MAT
10	2	C3, C7	CAP, X7R, 0.1µF, 16V, 10%, 0603	AVX/0603YC104KAT
11	3	J5, J7, J9	CONN, SMA, 50Ω, EDGE-LAUNCH, FEMALE	AMPHENOL_CONNEX/132357
12	0	J8	DNI	
13	4	J2, J3, J4, J6	HEADER, 3 × 2, 2mm	SAMTEC TMM103-02-L-D
14	1	L1	IND, 3.9nH, 5%, 0402	COILCRAFT/0402CS-3N9XJLW
15	1	L5	IND, 2.7nH, 5%, 0402	COILCRAFT/0402CS-2N7XJLW
16	1	U1	IC, Serial_EEPROM, TSSOP8	MICROCHIP/24LC025-I_ST
17	1	U10	IC, VREG, ADJ, 500MA, S08	LINEAR_TECH/LT1763CDE
18	2	U3, U4	IC, RPTR, LVDS, OCTAL, SMT, TSSOP	FAIRCHILD/FIN1108
19	3	R3, R13, R14	RES, 0_OHM_JUMPER, 0805	VISHAY CRCW08050000Z0EA
20	14	R17-23, R28, R30-35	RES, 100, 1%, 1/20, 0201	VISHAY CRCW0201100RF
21	0	R9, R38-R41	DNI	
22	3	R9, R10, R24	RES, 100k, 1%, 1/16, 0402	VISHAY CRCW0402100KFKED
23	1	R12	RES, 10k, 1%, 1/16, 0402	VISHAY CRCW040210K0FKED
24	2	R4, R5	RES, 4.99, 1%, 1/16, 0402	VISHAY CRCW04024R99FKED
25	2	R1, R2	RES, 49.9, 1%, 1/16, 0402	VISHAY CRCW040249R9FKED
26	5	R25, R26, R27, R29, R36	RES, 4990, 1%, 1/16, 0402	VISHAY CRCW04024K99FKED
27	2	R7, R11	RES, 499, 1%, 1/10W, 0603	VISHAY CRCW0603499RFKEA
28	2	R6, R8	RES, 1000, 1%, 1/10W, 0603	VISHAY CRCW06031K00FKEA
29	5	TP1-5	TURRET	MILL_MAX/2308-2
30	4		STAND-OFF, NYLON 0.25" TALL	KEYSTONE, 8831 (SNAP ON)

### DC1437B-AA Required Circuit Components

1	1	DC1437B	General BOM	
2	0	R15	Res., DNI	
3	1	R16	RES, 0Ω JUMPER, 0805	VISHAY CRCW08050000Z0EA
4	1	U2	I.C., µModule	Linear Tech. Corp. LTM9003CV-AA

### DC1437B-AB Required Circuit Components

1	1	DC1437B	General BOM	
2	0	R16	Res., DNI	
3	1	R15	RES, 0Ω JUMPER, 0805	VISHAY CRCW08050000Z0EA
4	1	U2	I.C., µModule	Linear Tech. Corp. LTM9003CV-AB

SCHEMATIC DIAGRAM

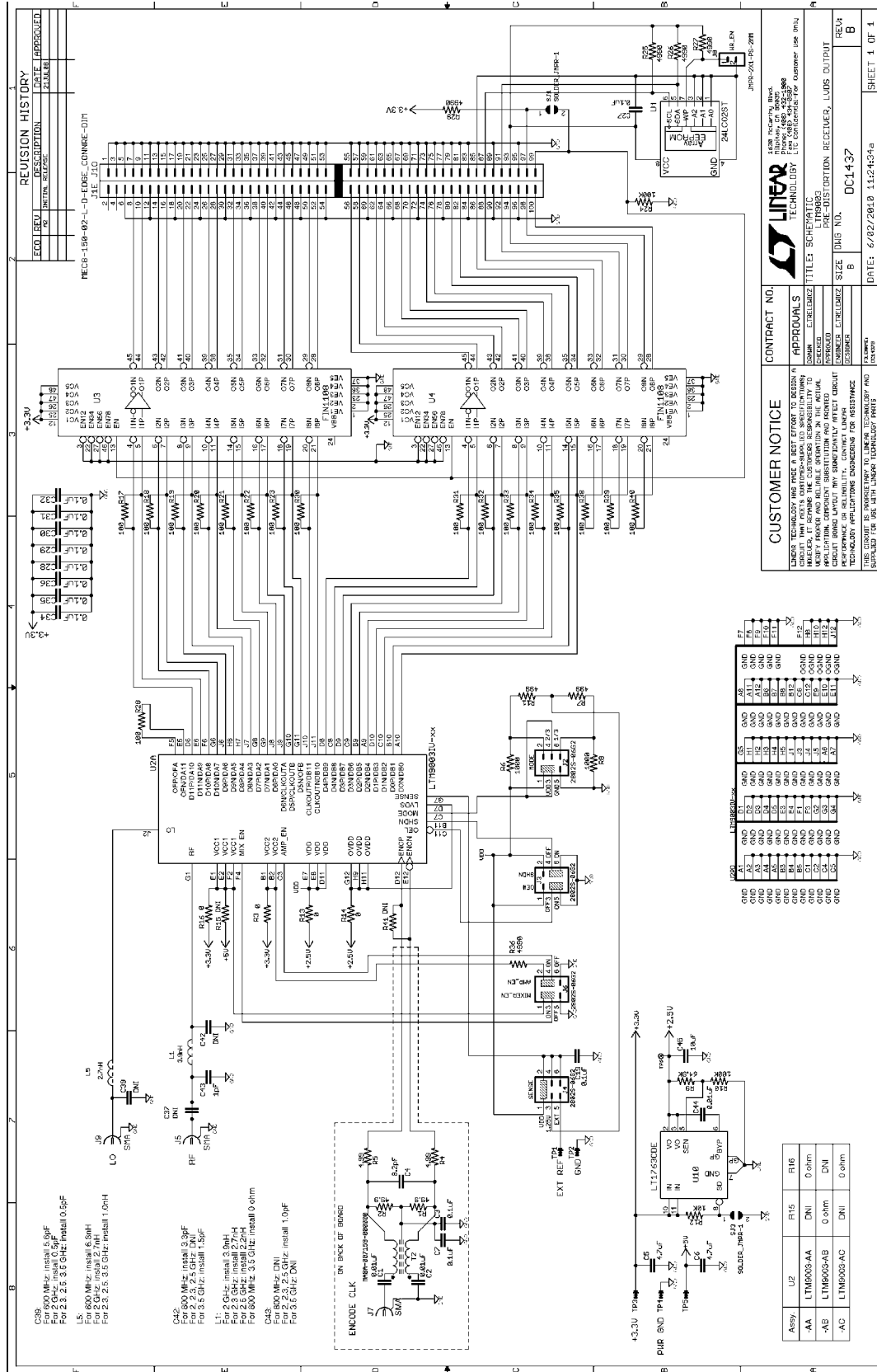


Figure 4. DC1437B Schematic Diagram

# DEMO MANUAL DC1437B

---

## DEMONSTRATION BOARD IMPORTANT NOTICE

Linear Technology Corporation (LTC) provides the enclosed product(s) under the following **AS IS** conditions:

This demonstration board (DEMO BOARD) kit being sold or provided by Linear Technology is intended for use for **ENGINEERING DEVELOPMENT OR EVALUATION PURPOSES ONLY** and is not provided by LTC for commercial use. As such, the DEMO BOARD herein may not be complete in terms of required design-, marketing-, and/or manufacturing-related protective considerations, including but not limited to product safety measures typically found in finished commercial goods. As a prototype, this product does not fall within the scope of the European Union directive on electromagnetic compatibility and therefore may or may not meet the technical requirements of the directive, or other regulations.

If this evaluation kit does not meet the specifications recited in the DEMO BOARD manual the kit may be returned within 30 days from the date of delivery for a full refund. **THE FOREGOING WARRANTY IS THE EXCLUSIVE WARRANTY MADE BY THE SELLER TO BUYER AND IS IN LIEU OF ALL OTHER WARRANTIES, EXPRESSED, IMPLIED, OR STATUTORY, INCLUDING ANY WARRANTY OF MERCHANTABILITY OR FITNESS FOR ANY PARTICULAR PURPOSE. EXCEPT TO THE EXTENT OF THIS INDEMNITY, NEITHER PARTY SHALL BE LIABLE TO THE OTHER FOR ANY INDIRECT, SPECIAL, INCIDENTAL, OR CONSEQUENTIAL DAMAGES.**

The user assumes all responsibility and liability for proper and safe handling of the goods. Further, the user releases LTC from all claims arising from the handling or use of the goods. Due to the open construction of the product, it is the user's responsibility to take any and all appropriate precautions with regard to electrostatic discharge. Also be aware that the products herein may not be regulatory compliant or agency certified (FCC, UL, CE, etc.).

No License is granted under any patent right or other intellectual property whatsoever. **LTC assumes no liability for applications assistance, customer product design, software performance, or infringement of patents or any other intellectual property rights of any kind.**

LTC currently services a variety of customers for products around the world, and therefore this transaction **is not exclusive**.

**Please read the DEMO BOARD manual prior to handling the product.** Persons handling this product must have electronics training and observe good laboratory practice standards. **Common sense is encouraged.**

This notice contains important safety information about temperatures and voltages. For further safety concerns, please contact a LTC application engineer.

Mailing Address:

Linear Technology  
1630 McCarthy Blvd.  
Milpitas, CA 95035

Copyright © 2004, Linear Technology Corporation



Компания «ЭлектроПласт» предлагает заключение долгосрочных отношений при поставках импортных электронных компонентов на взаимовыгодных условиях!

Наши преимущества:

- Оперативные поставки широкого спектра электронных компонентов отечественного и импортного производства напрямую от производителей и с крупнейших мировых складов;
- Поставка более 17-ти миллионов наименований электронных компонентов;
- Поставка сложных, дефицитных, либо снятых с производства позиций;
- Оперативные сроки поставки под заказ (от 5 рабочих дней);
- Экспресс доставка в любую точку России;
- Техническая поддержка проекта, помощь в подборе аналогов, поставка прототипов;
- Система менеджмента качества сертифицирована по Международному стандарту ISO 9001;
- Лицензия ФСБ на осуществление работ с использованием сведений, составляющих государственную тайну;
- Поставка специализированных компонентов (Xilinx, Altera, Analog Devices, Intersil, Interpoint, Microsemi, Aeroflex, Peregrine, Syfer, Eurofarad, Texas Instrument, Miteq, Cobham, E2V, MA-COM, Hittite, Mini-Circuits, General Dynamics и др.);

Помимо этого, одним из направлений компании «ЭлектроПласт» является направление «Источники питания». Мы предлагаем Вам помощь Конструкторского отдела:

- Подбор оптимального решения, техническое обоснование при выборе компонента;
- Подбор аналогов;
- Консультации по применению компонента;
- Поставка образцов и прототипов;
- Техническая поддержка проекта;
- Защита от снятия компонента с производства.



#### Как с нами связаться

**Телефон:** 8 (812) 309 58 32 (многоканальный)

**Факс:** 8 (812) 320-02-42

**Электронная почта:** [org@eplast1.ru](mailto:org@eplast1.ru)

**Адрес:** 198099, г. Санкт-Петербург, ул. Калинина, дом 2, корпус 4, литера А.