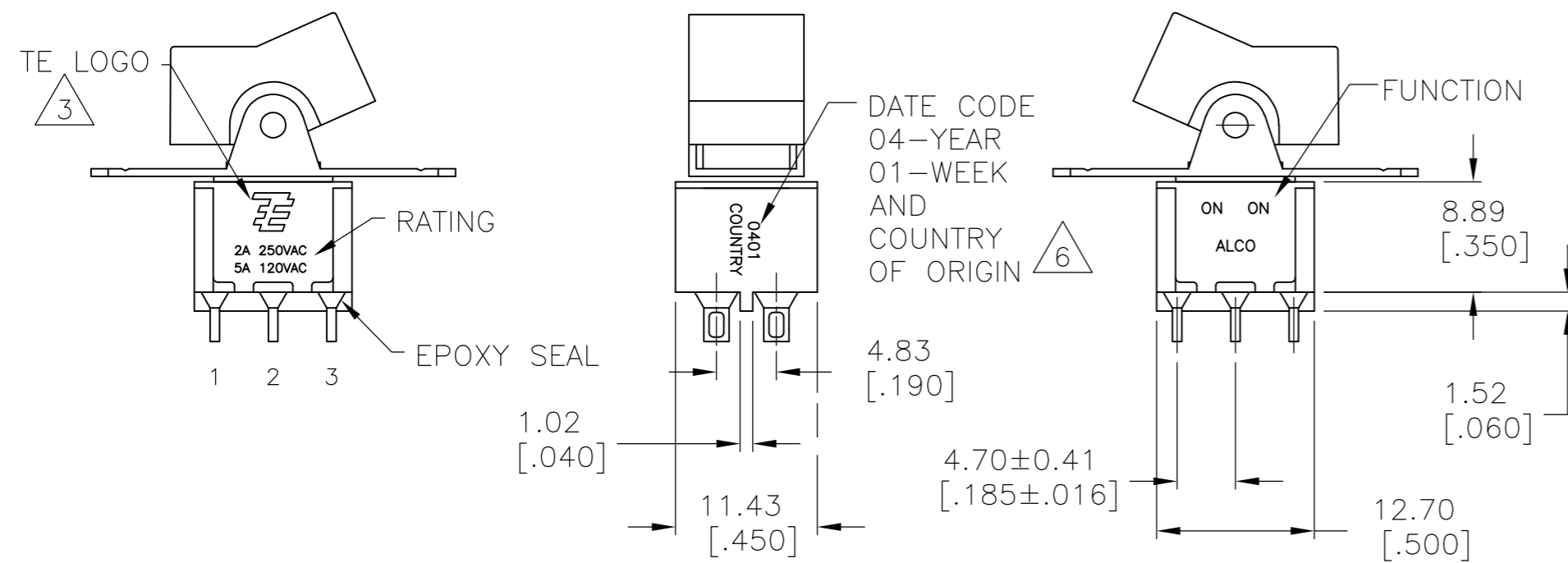


THIS DRAWING IS UNPUBLISHED. RELEASED FOR PUBLICATION
 © COPYRIGHT BY TYCO ELECTRONICS CORPORATION. ALL RIGHTS RESERVED.

| LOC | | DIST | | REVISIONS | | | |
|-----|-----|---------------------------|---------|-----------|------|--|--|
| P | LTR | DESCRIPTION | DATE | DWN | APVD | | |
| A4 | | REVISED PER ECO-10-009310 | 07MAY10 | HMR | MW | | |



- ALL MATERIALS AND FINISHES SHALL COMPLY WITH EU DIRECTIVE 2002/95/EC OF 27JAN2003 (ROHS).
- G CONTACT OPTION CAN BE USED FOR SIGNAL OR POWER LEVEL SWITCHING. IF SWITCH IS USED AT LEVELS EXCEEDING .4VA @ 20V AC/DC, SWITCH IS RENDERED FOR POWER SWITCHING ONLY DUE TO ARC REMOVAL OF GOLD PLATING. RATING STAMPED ON THE SWITCH IS 2A 250VAC, 5A 120VAC.
- TE LOGO PER PER TEC-202-36.
- SP3T FUNCTION ACHIEVED WITH FUNCTIONS 11, 13, & 15 BY CUSTOMER APPLIED JUMPER BETWEEN TERMINALS 3 & 5.
- DATE CODE AND COUNTRY OF ORIGIN MAY APPEAR ON EITHER SIDE OF SWITCH.
- PANEL MOUNT BRACKET SUPPLIED WITH TERMINALS W, Z AND Z3 ONLY.

FUNCTION CHART

| FUNCTION | | | |
|--|-------------|-------------|-------------|
| 01 | ON | NONE | ON |
| 03 | ON | OFF | ON |
| 05 | (ON) | OFF | (ON) |
| 07 | ON | OFF | (ON) |
| 08 | ON | NONE | (ON) |
| TERMINALS CONNECTED | 2-3, 5-6 | --- | 1-2, 4-5 |
| 11 | ON | ON | ON |
| 13 | ON | ON | (ON) |
| 15 | (ON) | ON | (ON) |
| TERMINALS CONNECTED | 2-3, 5-6 | 2-3, 4-5 | 1-2, 4-5 |
| SP3T SCHEMATIC (11, 13 & 15 ONLY) NOTE 5 | | | |
| | IN 2, OUT 6 | IN 2, OUT 4 | IN 2, OUT 1 |

NONE: NO MECHANICAL POSITION
 OFF: MECHANICAL POSITION WITH NO ELECTRICAL CONNECTION
 (ON): MOMENTARY ACTION

SPECIFICATIONS

| | |
|---------------------------------|--|
| RATING, B CONTACTS | .4VA MAX @20V MAX. AC OR DC |
| RATING, G CONTACTS--SEE NOTE 2 | .4VA MAX @20V MAX. AC OR DC OR 5A @120 VAC OR 28 VDC (RESISTIVE) |
| | 2A @250 VAC (RESISTIVE) |
| RATING, Q CONTACTS | 5A @120 VAC OR 28 VDC (RESISTIVE) |
| | 2A @250 VAC (RESISTIVE) |
| ELECTRICAL LIFE | 6,000 CYCLES AT RATED LOAD |
| CONTACT RESISTANCE | 10 MILLIOHMS MAX INITIAL @ 2-4VDC, 100MA |
| INSULATION RESISTANCE | 1,000 MEGOHMS MIN |
| DIELECTRIC WITHSTANDING VOLTAGE | 1,000 V RMS AT SEA LEVEL |
| OPERATING TEMPRATURE | -30C TO 85C |

PART NUMBER SEQUENCE

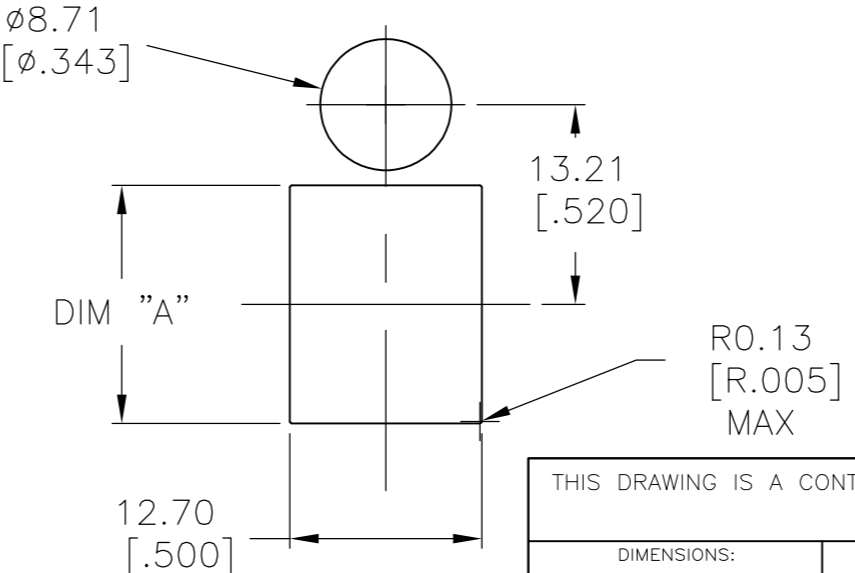
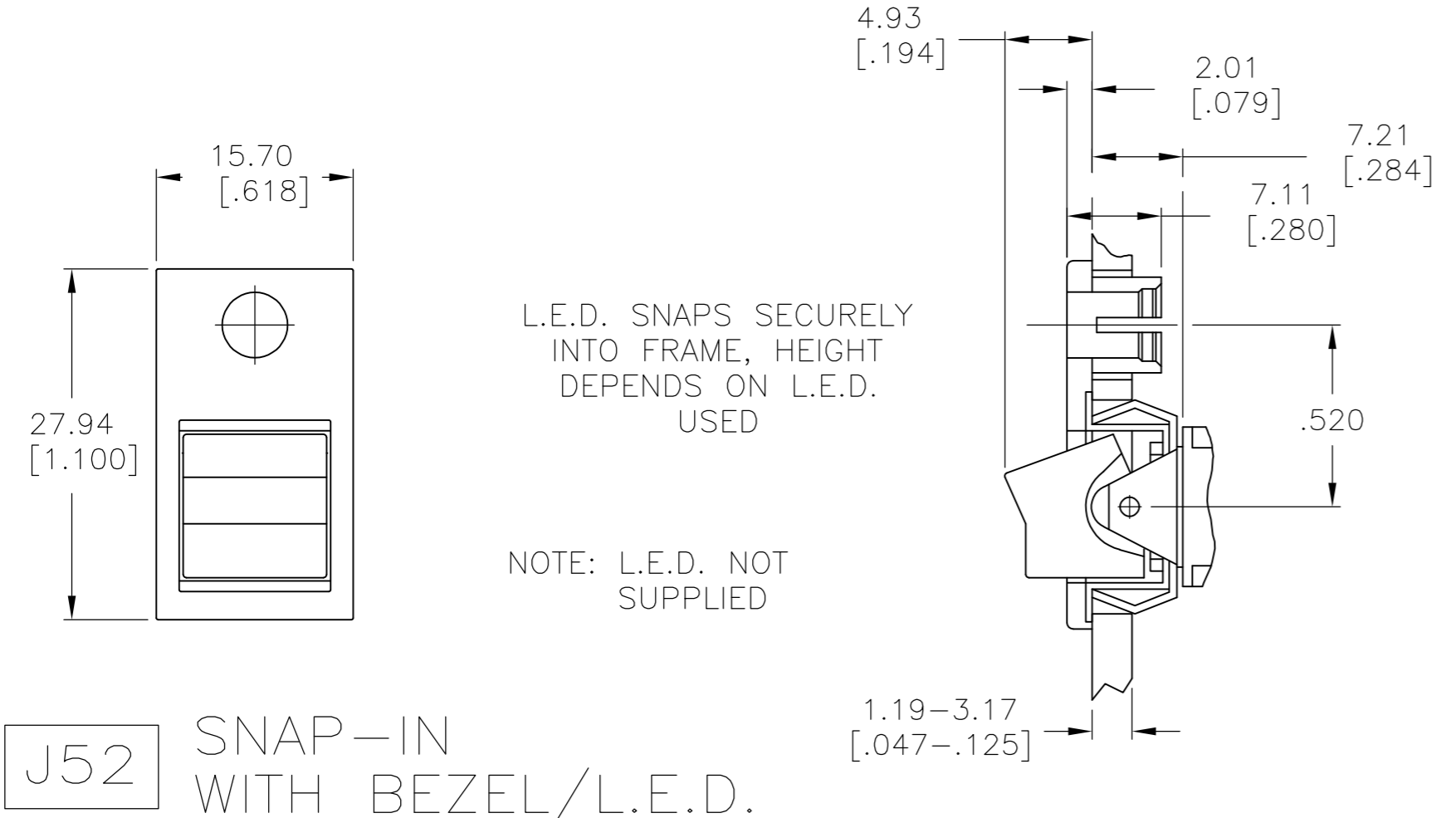
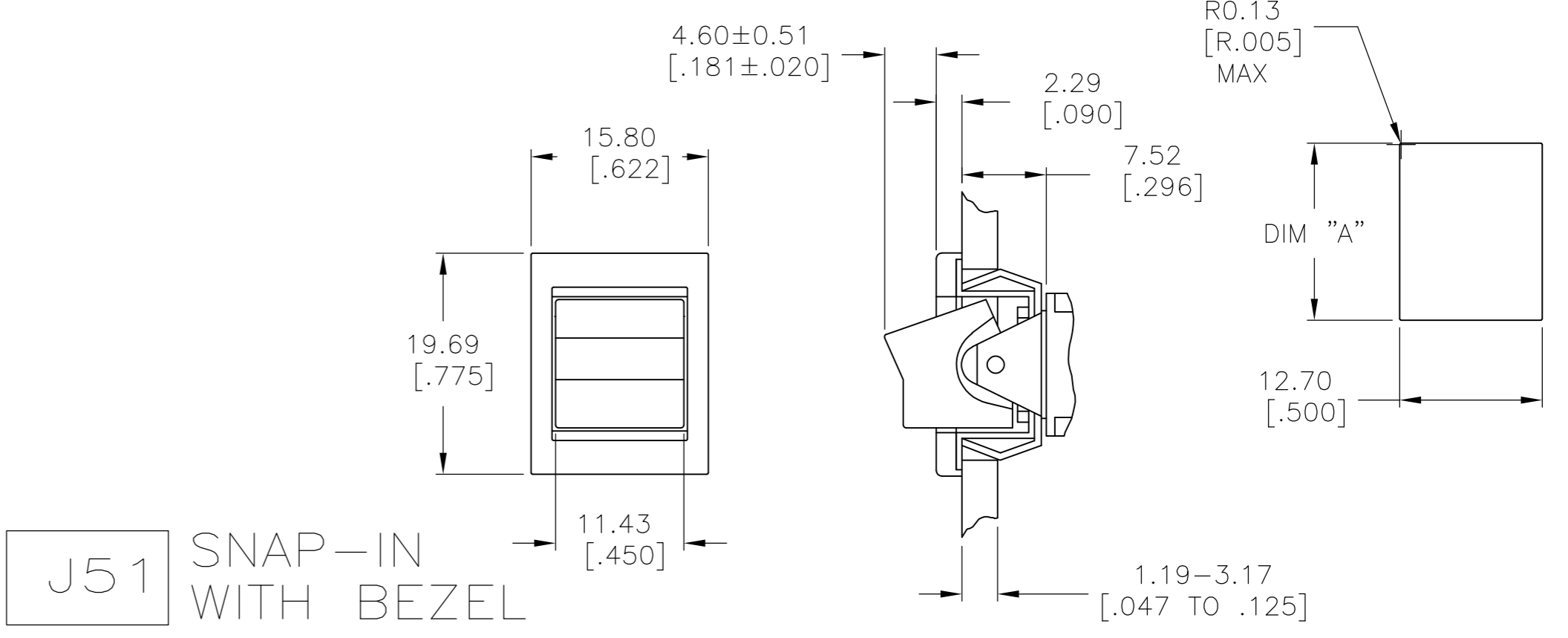
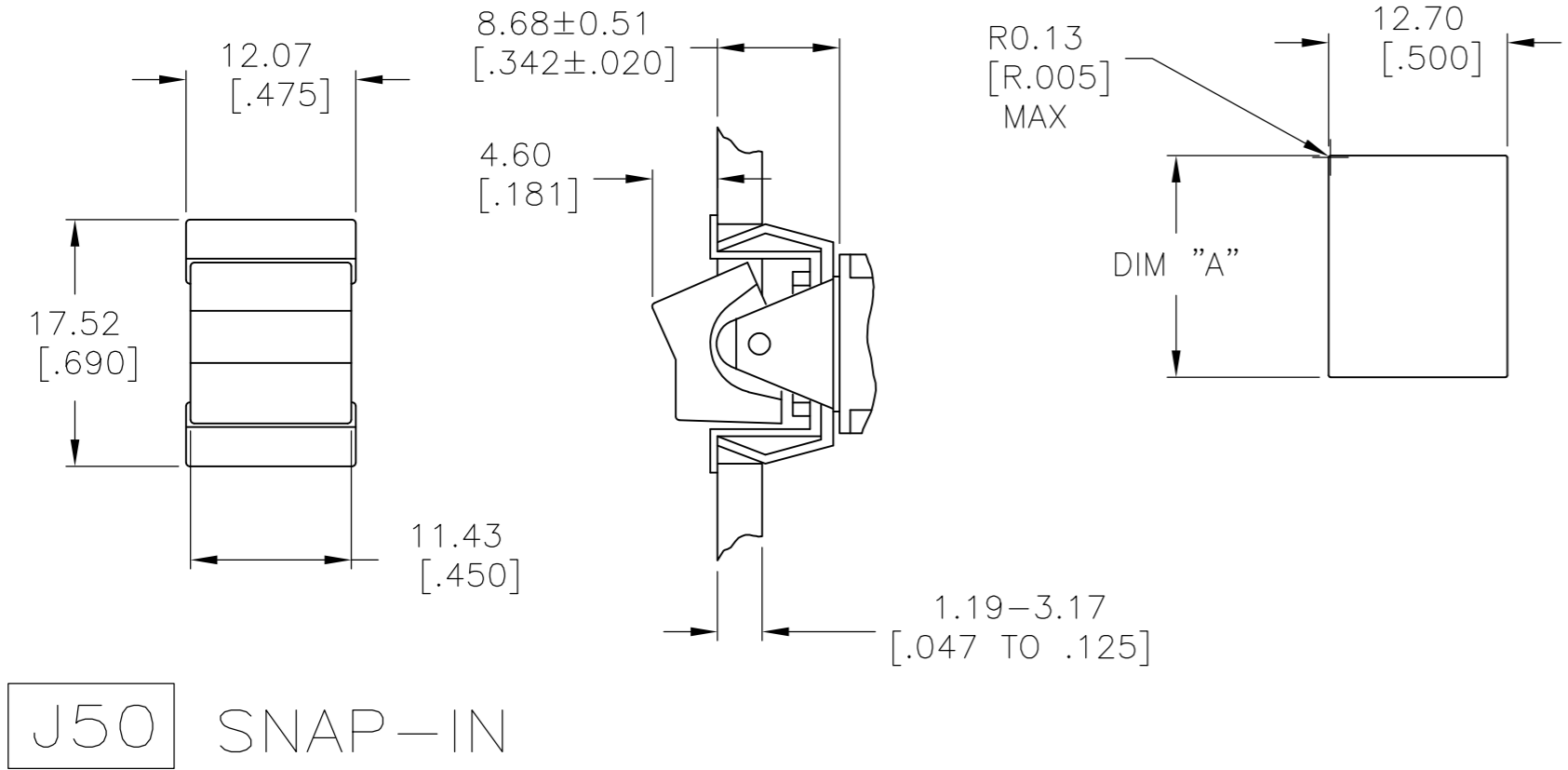
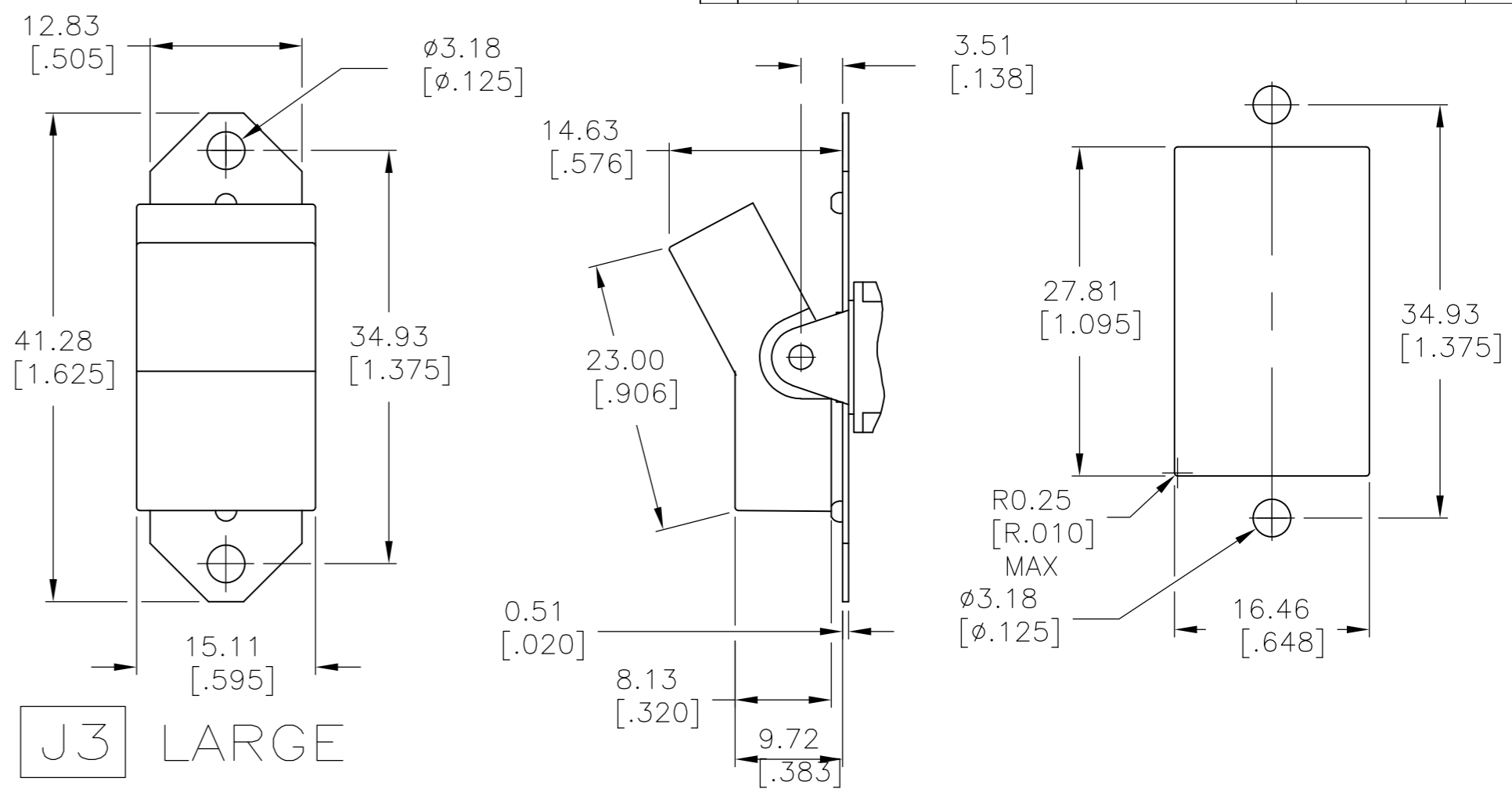
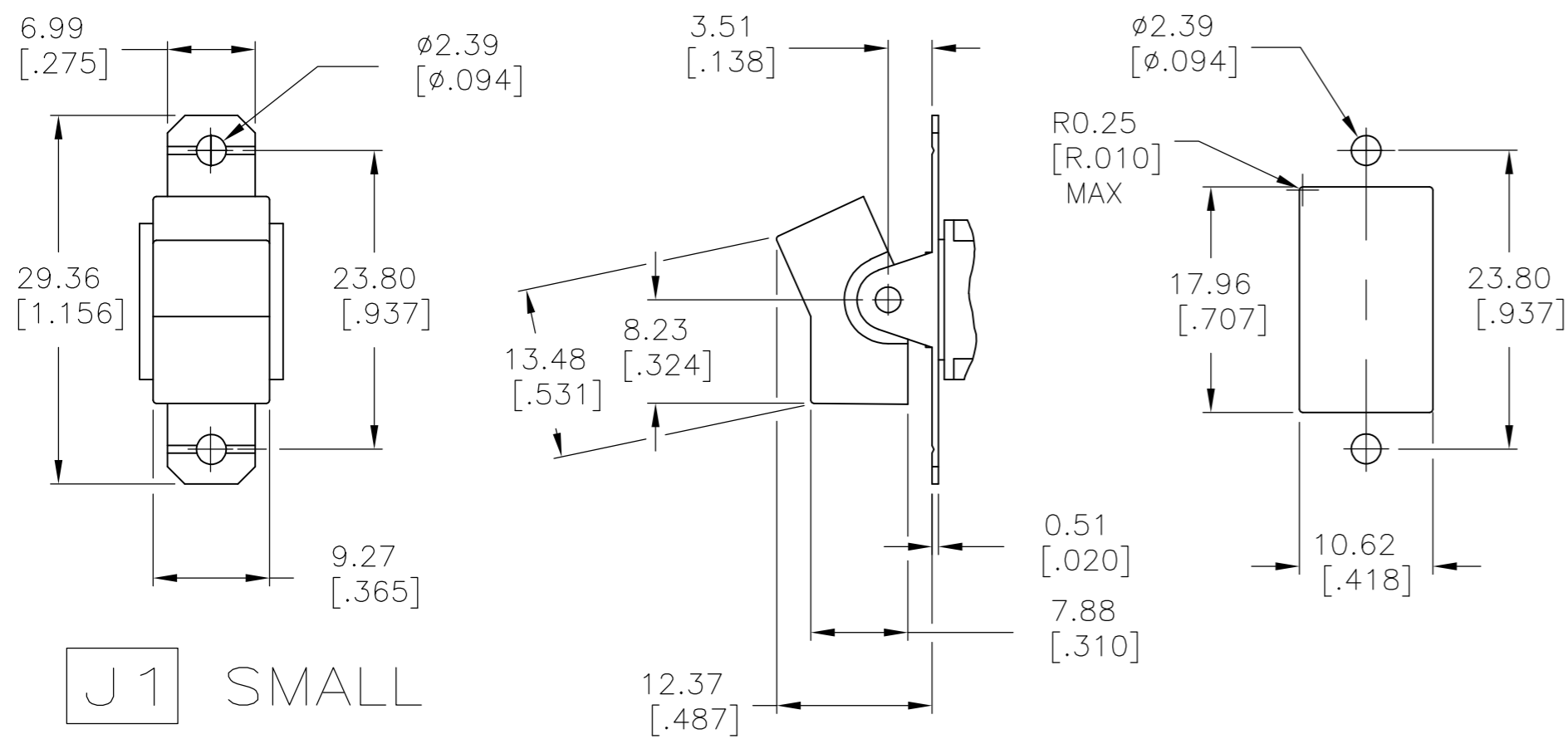
| MODEL | FUNCTION | ACTUATOR | TERMINAL | CONTACT | ACTUATOR COLOR | FRAME COLOR | ROHS |
|-------|----------|----------|----------|---------|----------------|---------------|------|
| A2 | | | | | | | 04 |
| | 01 | J1 | A | B | 0 BLACK (STD) | 0 BLACK (STD) | |
| | 03 | J3 | AV2 | G | 1 BROWN | 1 BROWN | |
| | 05 | J50 | C | Q | 2 RED | 2 RED | |
| | 07 | J51 | V3 | | 3 ORANGE | 3 ORANGE | |
| | 08 | J52 | V4 | | 4 YELLOW | 4 YELLOW | |
| | 11 | J2 | V7 | | 5 GREEN | 5 GREEN | |
| | 13 | J4 | W | | 6 BLUE | 6 BLUE | |
| | 15 | J60 | W4 | | 8 GRAY | 8 GRAY | |
| | | J61 | Z | | 9 WHITE | 9 WHITE | |
| | | J62 | Z3 | | | | |

THIS DRAWING IS A CONTROLLED DOCUMENT.

| | | | | |
|------------------|----------|---------|---|--|
| DWN | M.BINNER | 06JAN05 | Tyco Electronics Corporation Harrisburg, PA 17105-3608 | |
| CHK | M.ZITTO | 06JAN05 | | |
| APVD | M.ZITTO | 06JAN05 | | |
| PRODUCT SPEC | | | | |
| APPLICATION SPEC | | | NAME | GEMINI A SERIES ROCKER SWITCH DOUBLE POLE |
| MATERIAL | | | SIZE | A2 |
| FINISH | | | CAGE CODE | 00779 |
| | | | DRAWING NO | C=1571987 |
| | | | RESTRICTED TO | |
| | | | WEIGHT | |
| | | | CUSTOMER DRAWING | |
| | | | SCALE | 2:1 |
| | | | SHEET | 1 of 5 |
| | | | REV | A4 |

THIS DRAWING IS UNPUBLISHED. RELEASED FOR PUBLICATION
 © COPYRIGHT BY TYCO ELECTRONICS CORPORATION. ALL RIGHTS RESERVED.

| LOC | DIST | REVISIONS | | | | | |
|-----|------|-----------|-----|-------------|------|-----|------|
| AD | 00 | P | LTR | DESCRIPTION | DATE | DWN | APVD |
| | | - | - | SEE SHEET 1 | - | - | - |

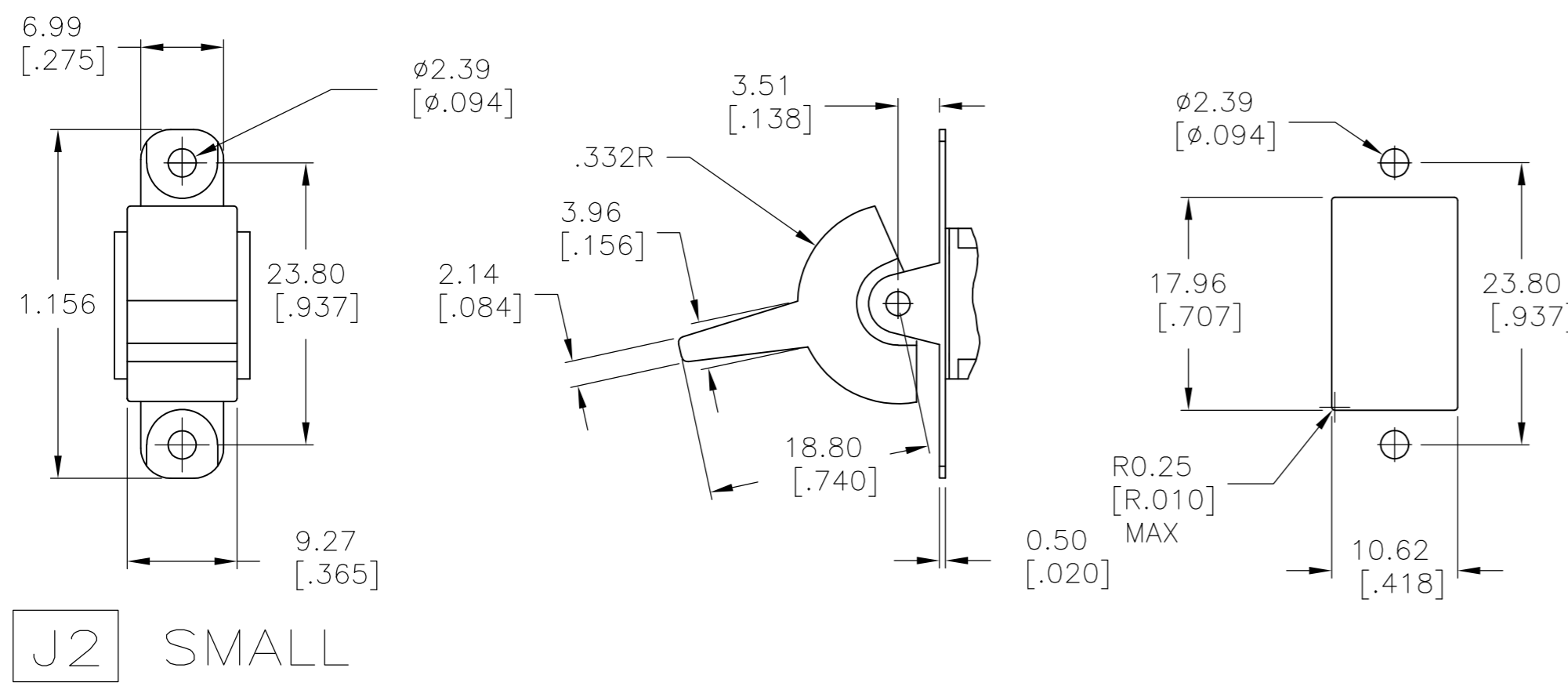


| | |
|-----------------------|-------------------------|
| 1.52-3.17 [.060-.125] | 15.75-15.87 [.620-.625] |
| 1.19-1.50 [.047-.059] | 15.72 [.619] |
| PANEL THICKNESS | DIM "A" |

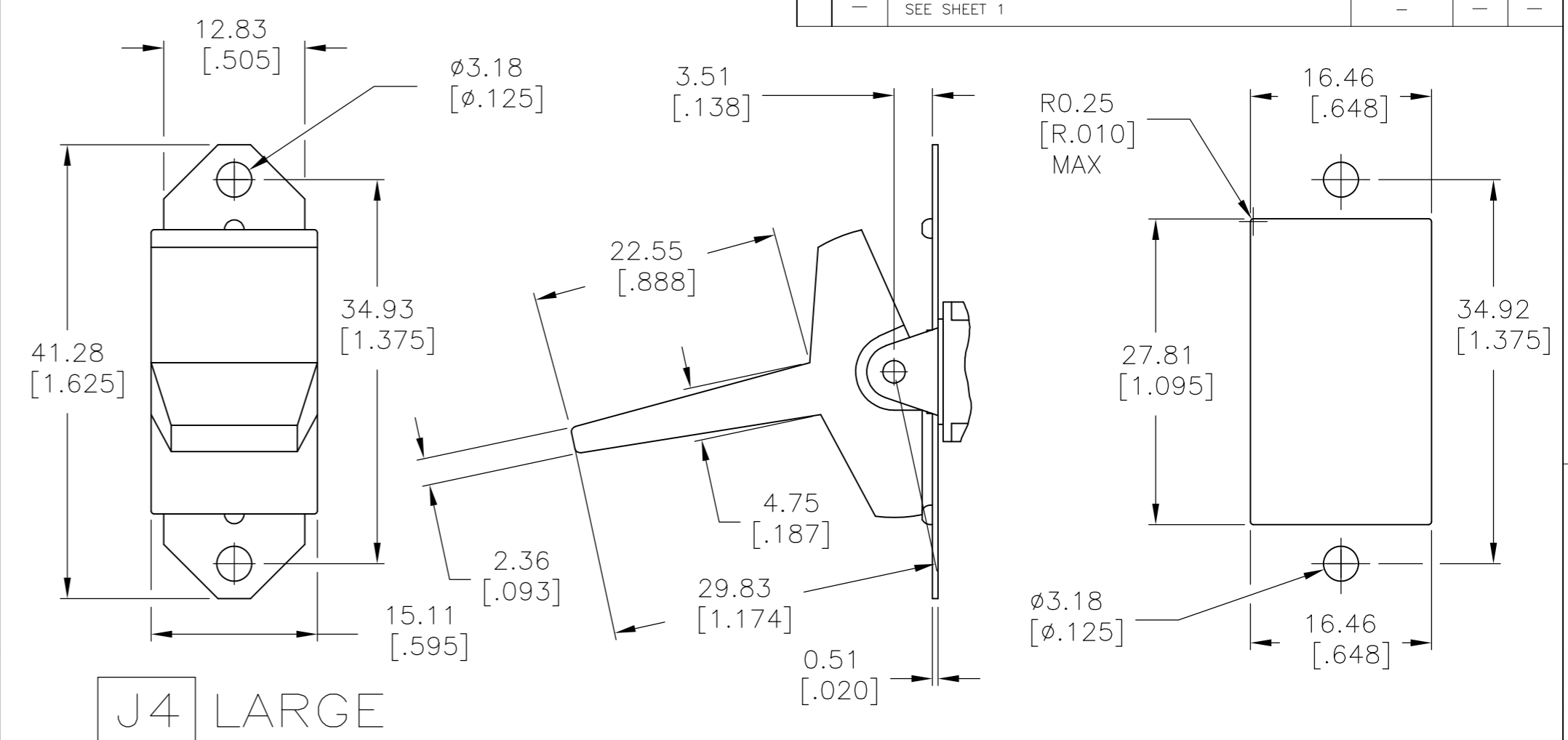
| | | | | | |
|---|--------|------------------|---|---------|---|
| THIS DRAWING IS A CONTROLLED DOCUMENT. | | DWN | M.BINNER | 06JAN05 | Tyco Electronics Corporation Harrisburg, PA 17105-3608 |
| DIMENSIONS: mm [INCHES] | | CHK | M.ZITTO | 06JAN05 | |
| TOLERANCES UNLESS OTHERWISE SPECIFIED: | | APVD | M.ZITTO | 06JAN05 | |
| 0 PLC ± - 1 PLC ± - 2 PLC ± - 3 PLC ± .010 4 PLC ± - ANGLES ± 4° | | PRODUCT SPEC | NAME | | |
| MATERIAL | FINISH | APPLICATION SPEC | GEMINI A SERIES ROCKER SWITCH DOUBLE POLE | | RESTRICTED TO |
| CUSTOMER DRAWING | | WEIGHT | A2 00779 C=1571987 | | SCALE |
| | | SCALE | | 2:1 | SHEET |
| | | | | 2 OF 5 | REV |
| | | | | A4 | |

THIS DRAWING IS UNPUBLISHED. RELEASED FOR PUBLICATION
 © COPYRIGHT BY TYCO ELECTRONICS CORPORATION. ALL RIGHTS RESERVED.

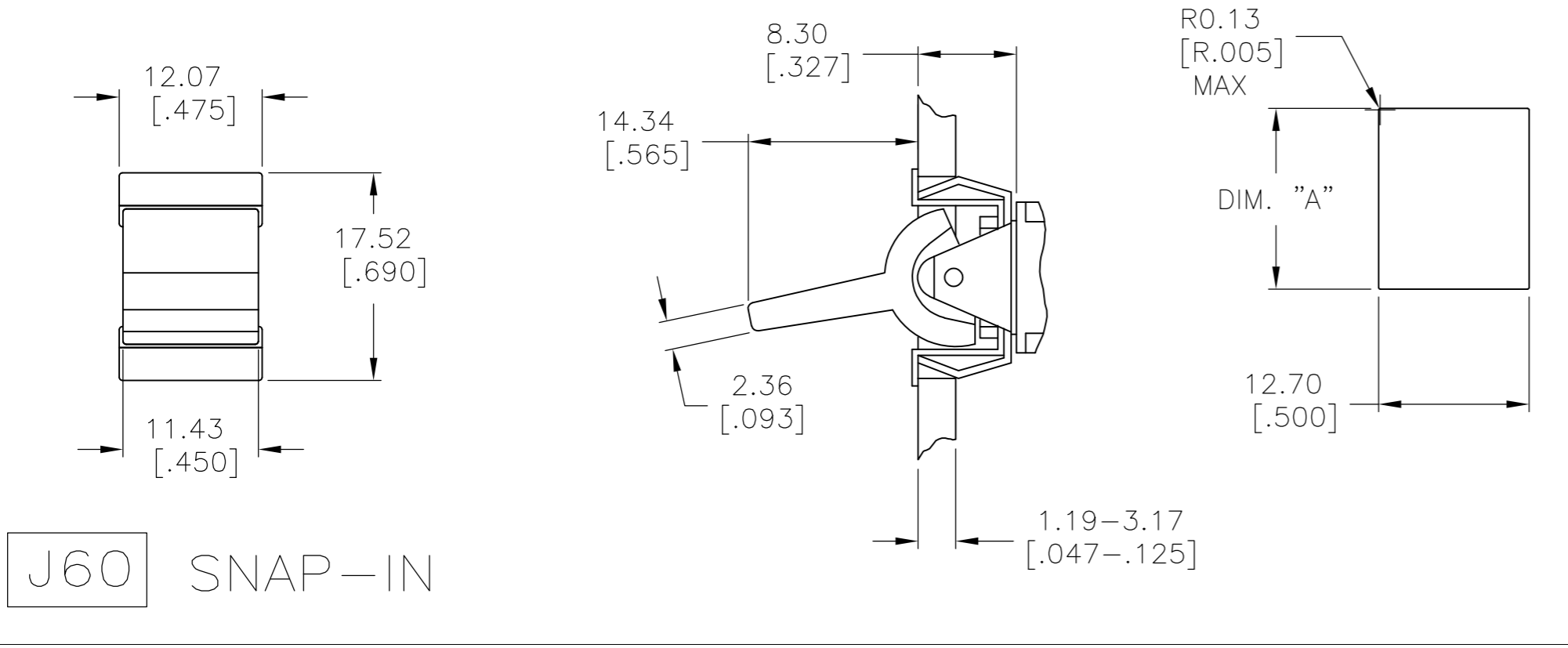
| LOC | | DIST | | REVISIONS | | | | |
|-------------|-----|-------------|------|-----------|------|--|--|--|
| P | LTR | DESCRIPTION | DATE | DWN | APVD | | | |
| AD | 00 | | | | | | | |
| SEE SHEET 1 | | | | | | | | |



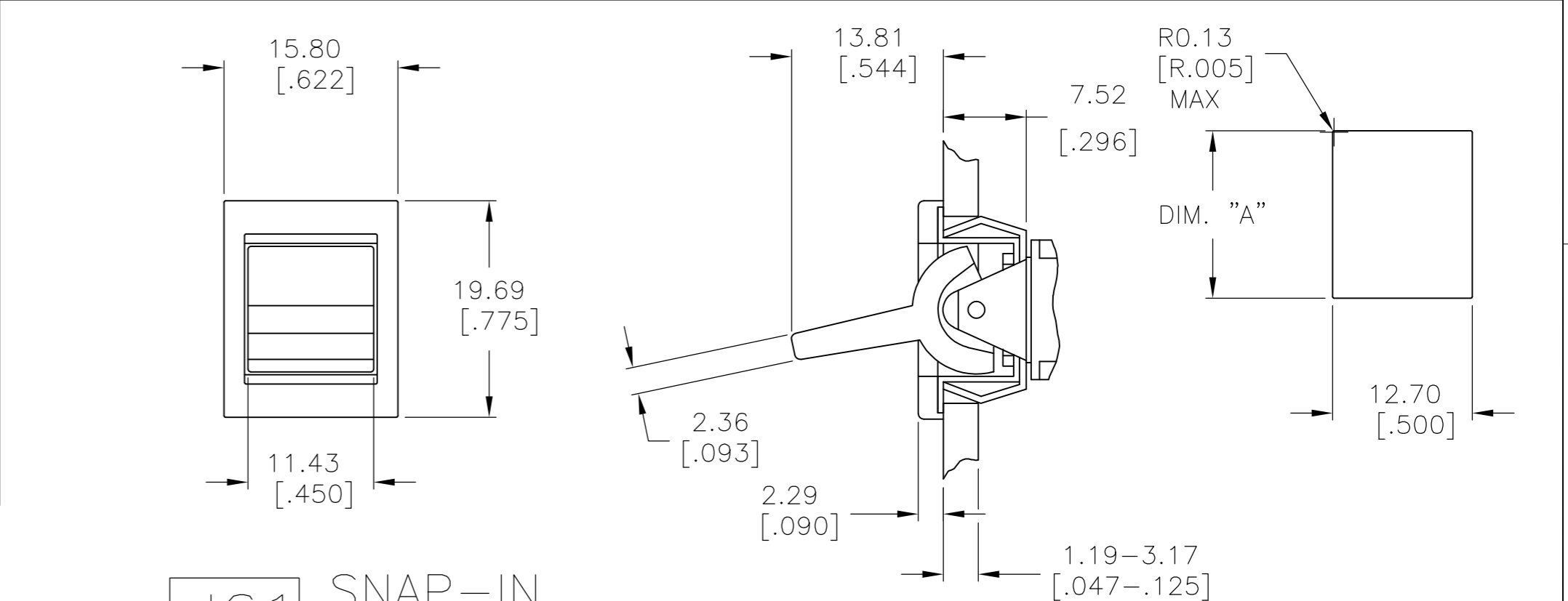
J2 SMALL



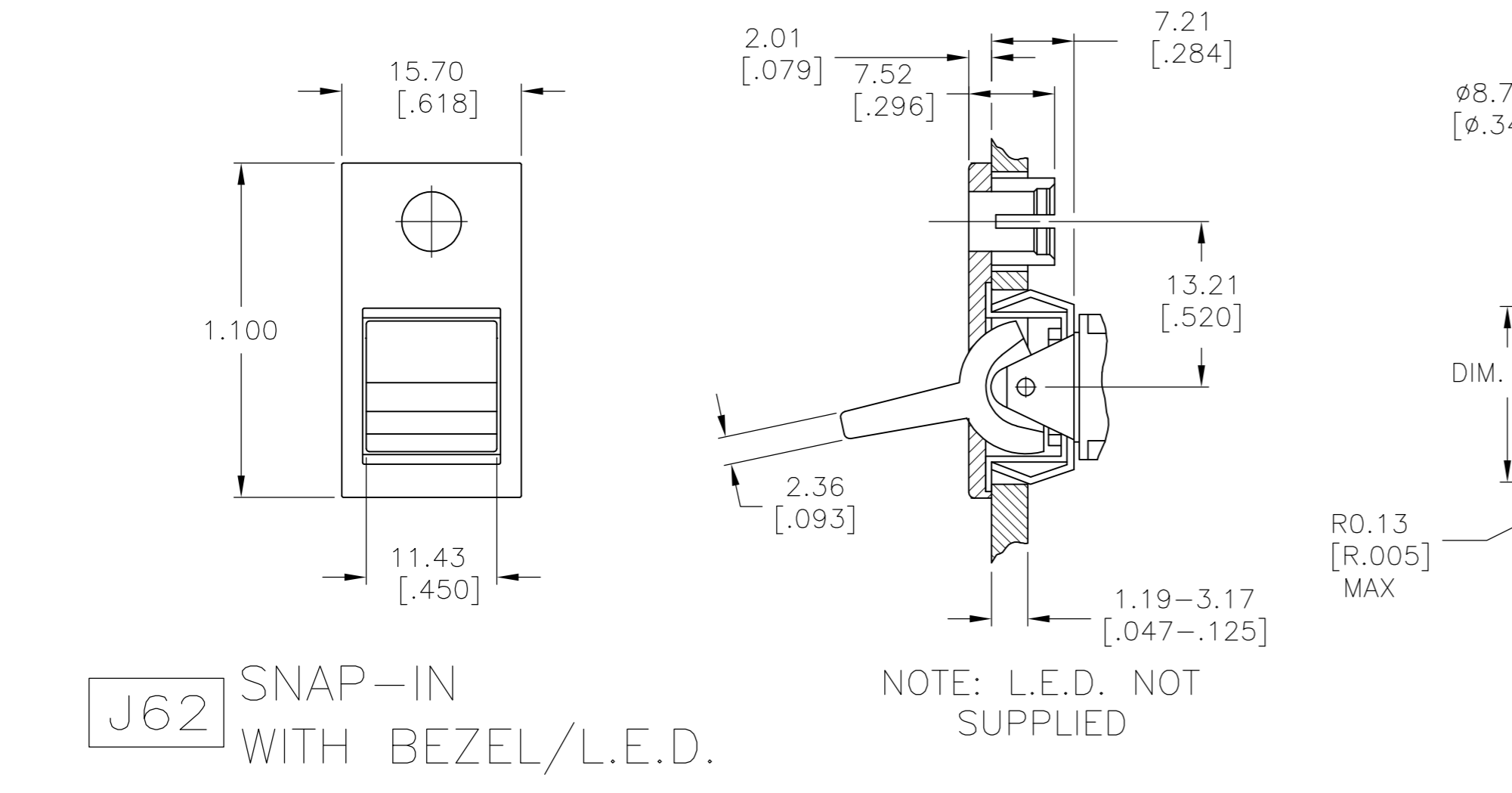
J4 LARGE



J60 SNAP-IN



J61 SNAP-IN WITH BEZEL



J62 SNAP-IN WITH BEZEL/L.E.D.

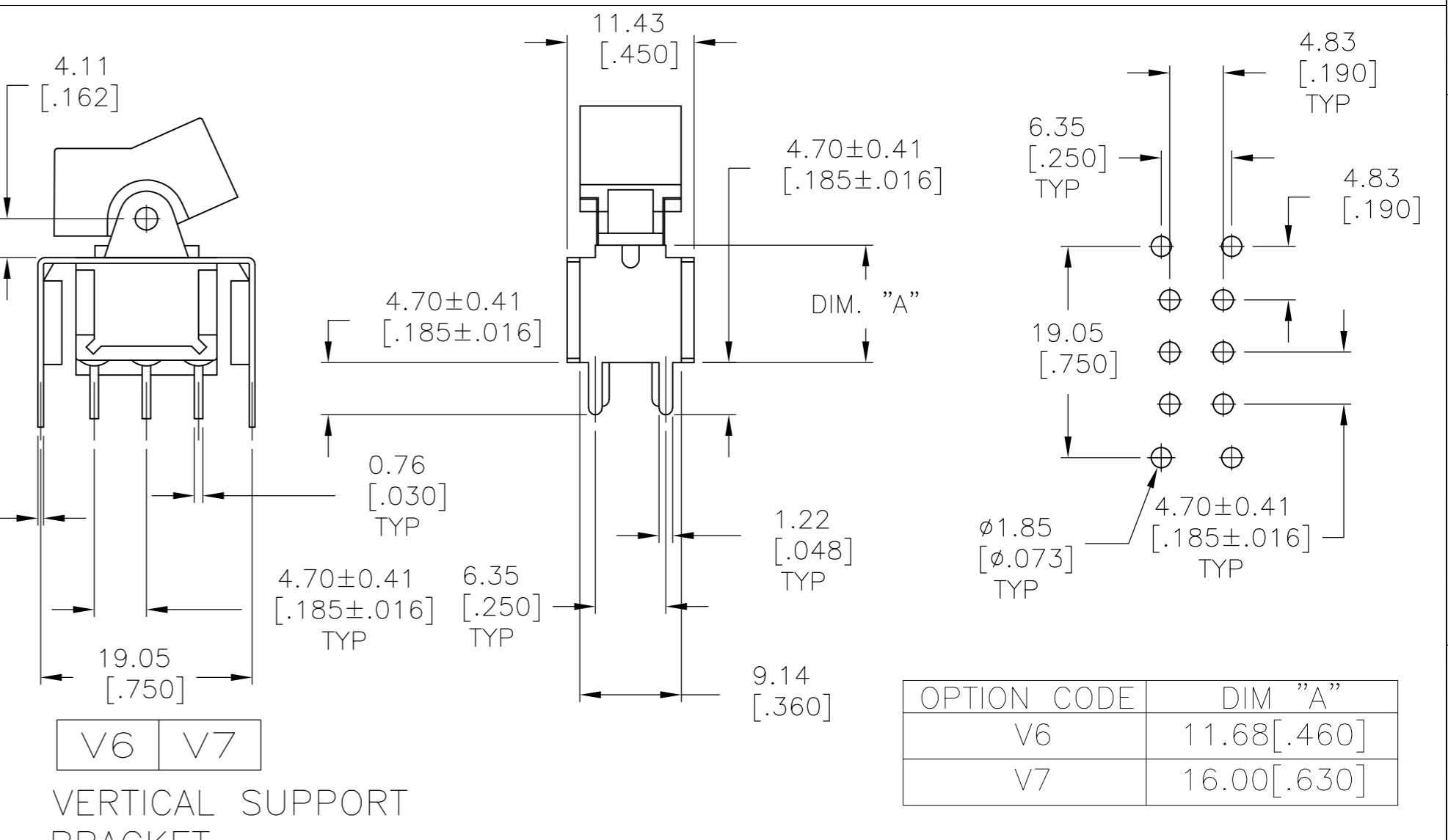
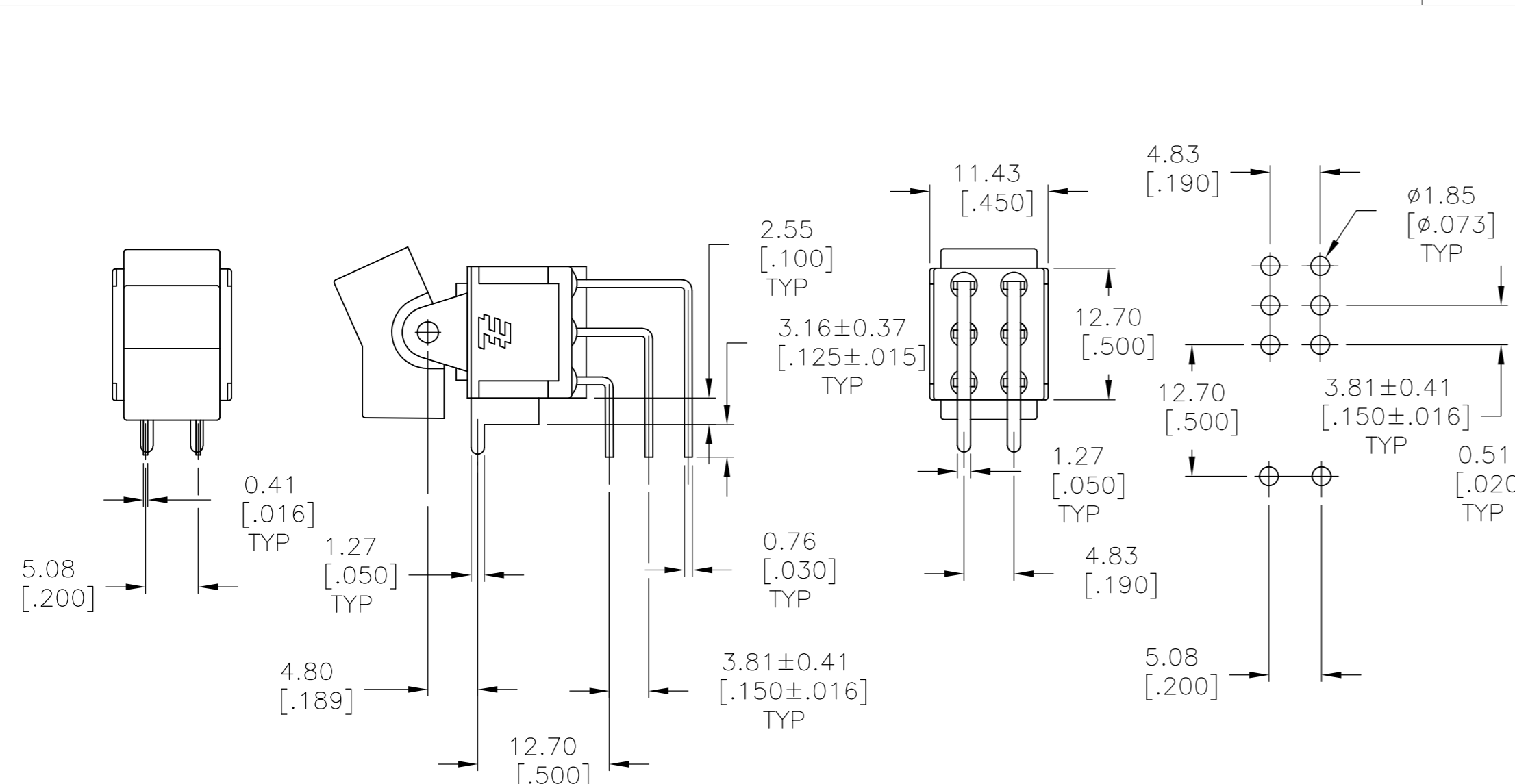
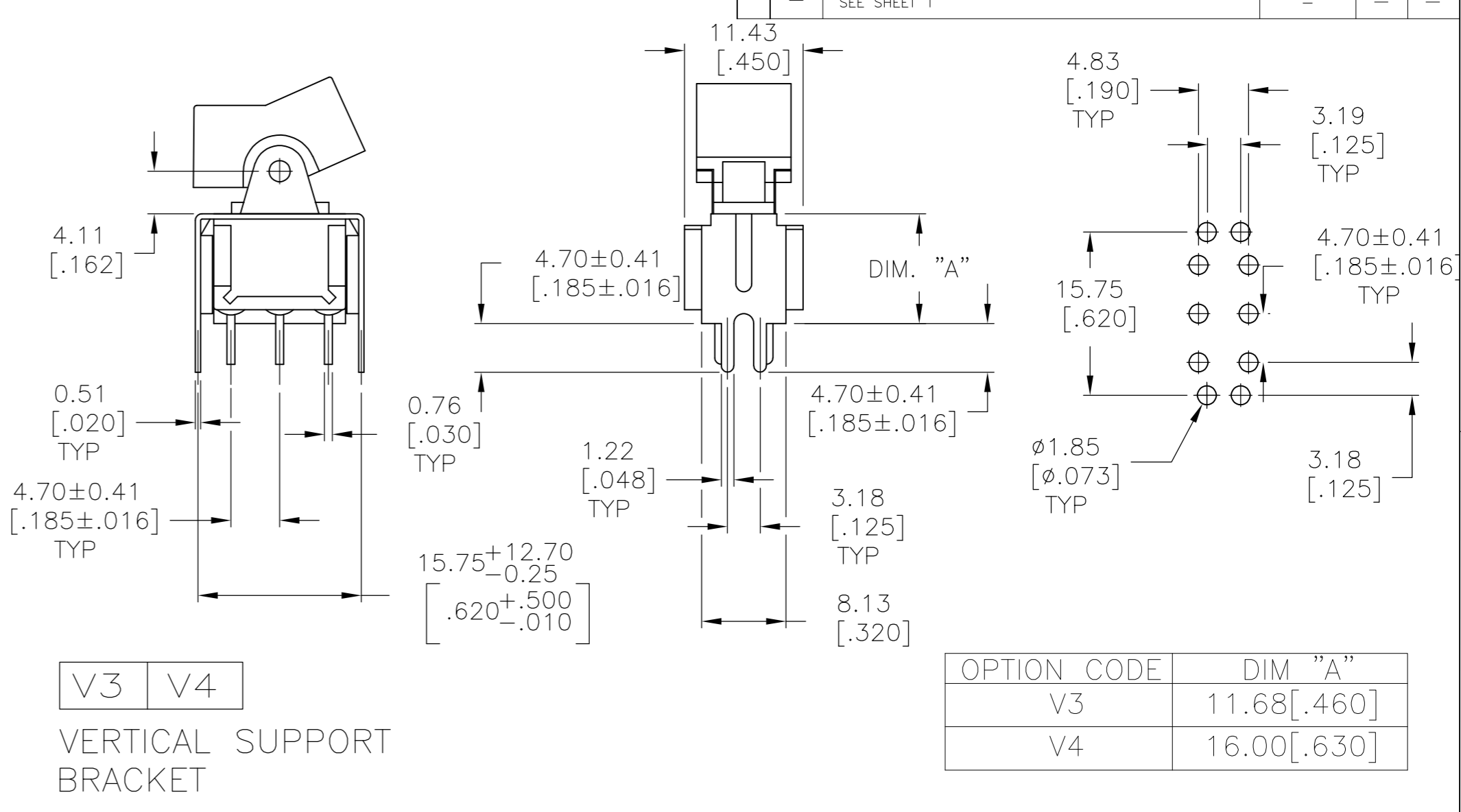
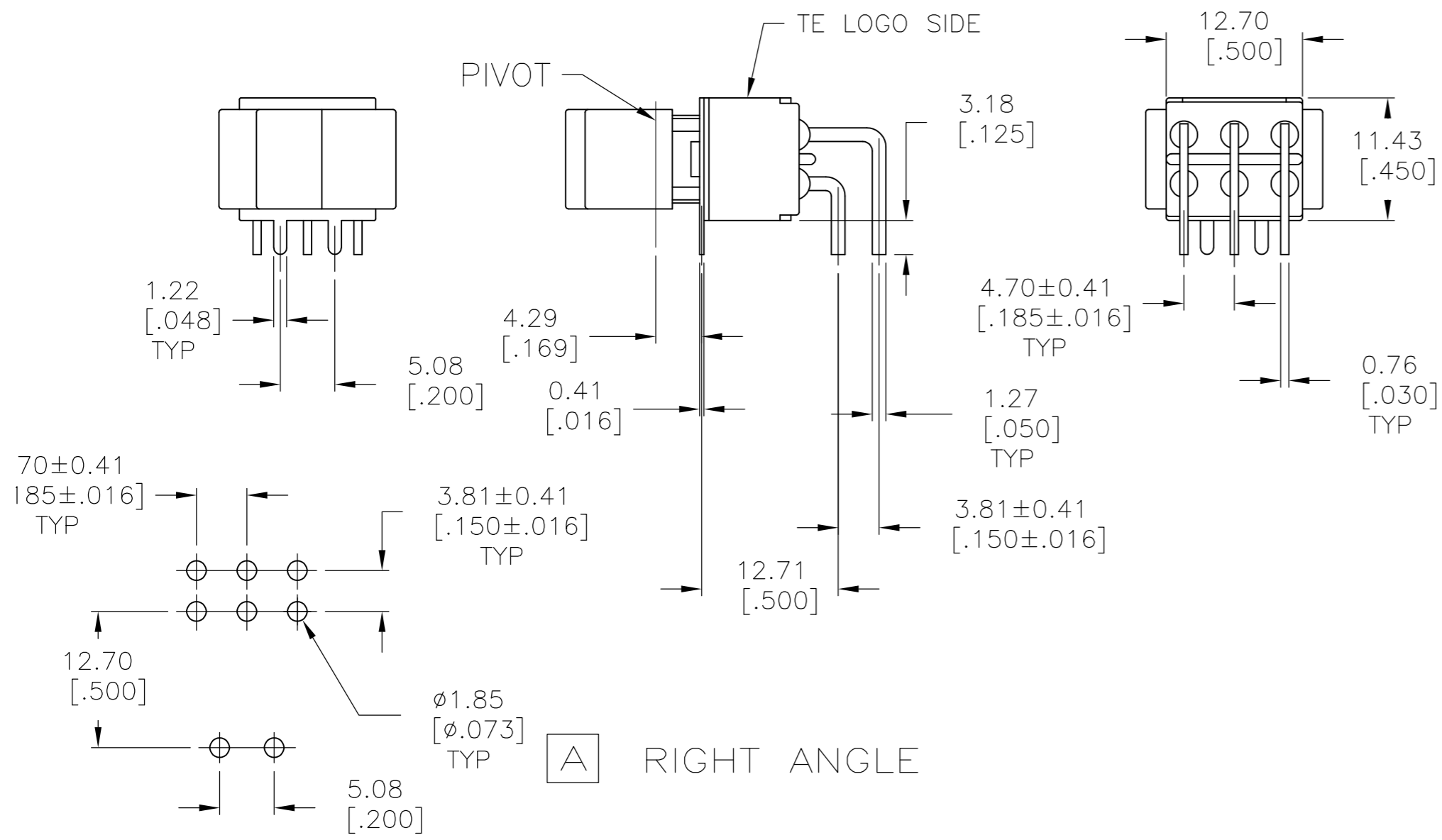
| | |
|------------------------|--------------------------|
| 1.52-3.17 [0.060-.125] | 15.75-15.87 [0.620-.625] |
| 1.19-1.50 [0.047-.059] | 15.72 [0.619] |
| PANEL THICKNESS | |
| DIM "A" | |

| | | | | | |
|---|--|------------------|----------|---|---|
| THIS DRAWING IS A CONTROLLED DOCUMENT. | | DWN | M.BINNER | 06JAN05 | Tyco Electronics Corporation Harrisburg, PA 17105-3608 |
| DIMENSIONS: mm [INCHES] | | CHK | M.ZITTO | 06JAN05 | |
| TOLERANCES UNLESS OTHERWISE SPECIFIED: | | APVD | M.ZITTO | 06JAN05 | |
| 0 PLC ± - 1 PLC ± - 2 PLC ± - 3 PLC ± .010 4 PLC ± - ANGLES ± 4° FINISH - | | PRODUCT SPEC | NAME | | |
| MATERIAL | | APPLICATION SPEC | | GEMINI A SERIES ROCKER SWITCH DOUBLE POLE | |
| WEIGHT | | SCALE | | A2 00779 C=1571987 | |
| CUSTOMER DRAWING | | SHEET | | 3 OF 5 | |
| REV | | A4 | | | |

1571987

THIS DRAWING IS UNPUBLISHED. RELEASED FOR PUBLICATION
 © COPYRIGHT BY TYCO ELECTRONICS CORPORATION. ALL RIGHTS RESERVED.

| LOC | DIST | REVISIONS | | | | | |
|-----|------|-----------|-----|-------------|------|-----|------|
| AD | 00 | P | LTR | DESCRIPTION | DATE | DWN | APVD |
| | | | | SEE SHEET 1 | | | |



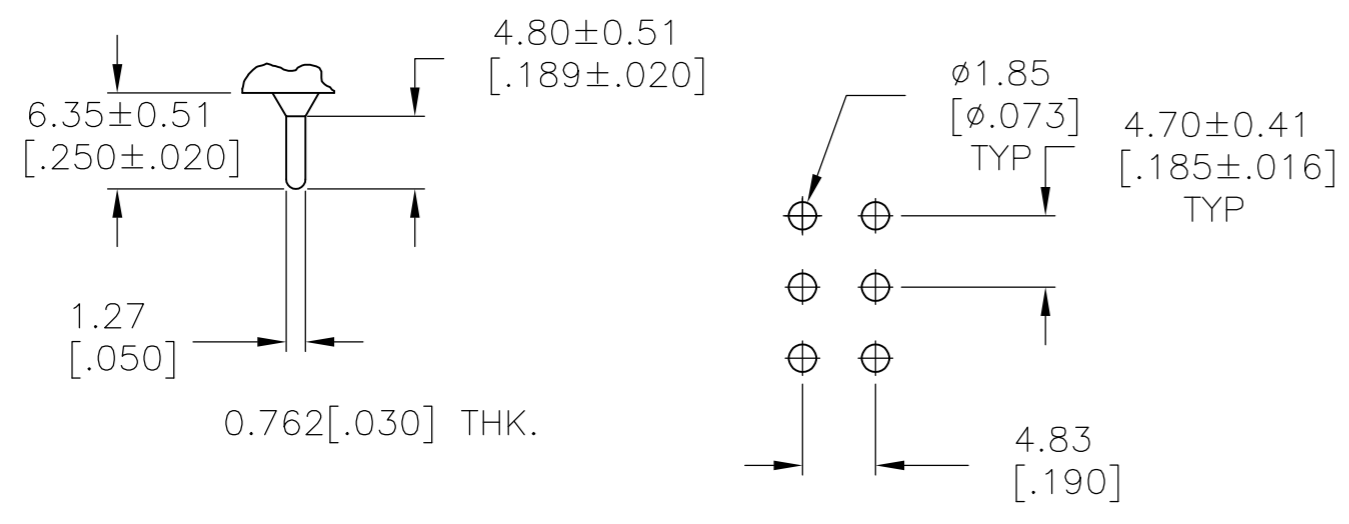
AV2 VERTICAL RIGHT ANGLE

V6 V7
 VERTICAL SUPPORT BRACKET

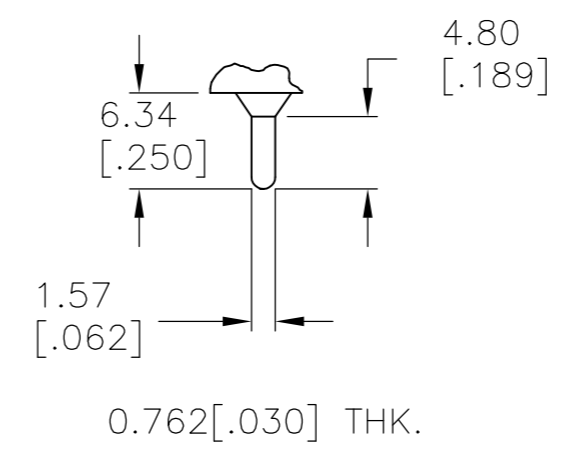
| | | | |
|--|--------|----------------------------|---|
| THIS DRAWING IS A CONTROLLED DOCUMENT. | | DWN M.BINNER 06JAN05 | Tyco Electronics Tyco Electronics Corporation Harrisburg, PA 17105-3608 |
| DIMENSIONS: mm [INCHES] | | CHK M.ZITTO 06JAN05 | |
| TOLERANCES UNLESS OTHERWISE SPECIFIED: | | APVD M.ZITTO 06JAN05 | NAME GEMINI A SERIES ROCKER SWITCH DOUBLE POLE |
| 0 PLC ± - | | PRODUCT SPEC | SIZE A2 |
| 1 PLC ± - | | APPLICATION SPEC | CAGE CODE 00779 |
| 2 PLC ± - | | | DRAWING NO 1571987 |
| 3 PLC ± .010 | | | RESTRICTED TO |
| 4 PLC ± - | | | |
| ANGLES ± 4° | | | |
| MATERIAL | FINISH | WEIGHT | SCALE 2:1 |
| | | | SHEET 4 OF 5 |
| | | | REV A4 |
| CUSTOMER DRAWING | | | |

THIS DRAWING IS UNPUBLISHED. RELEASED FOR PUBLICATION
 © COPYRIGHT BY TYCO ELECTRONICS CORPORATION. ALL RIGHTS RESERVED.

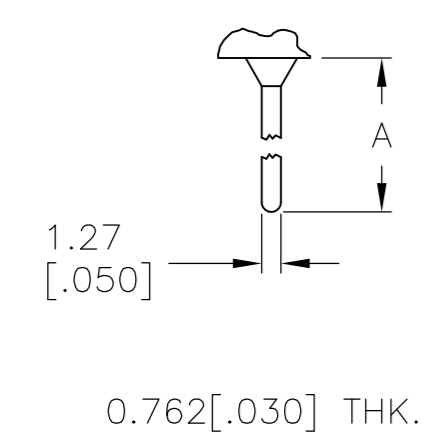
| LOC | | DIST | | REVISIONS | | | |
|-----|-----|-------------|------|-----------|------|--|--|
| P | LTR | DESCRIPTION | DATE | DWN | APVD | | |
| AD | 00 | SEE SHEET 1 | - | - | - | | |



C PRINTED CIRCUIT

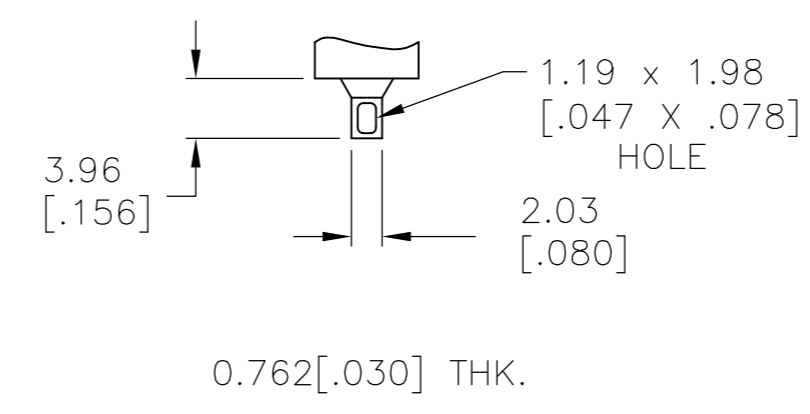


Z3 QUICK CONNECT



W **W4** WIRE WRAP

| OPTION | DIM A |
|--------|--------------|
| W | 18.69[.736] |
| W4 | 26.97[1.062] |



Z WIRE LUG

| | |
|----------------|-------------|
| A213J61ZQ0004 | 4-1571987-4 |
| A211J51ZQ0004 | 4-1571987-3 |
| A208J61ZQ0004 | 4-1571987-2 |
| A208J51ZQ0004 | 4-1571987-1 |
| A208J1V3Q0004 | 4-1571987-0 |
| NOT ASSIGNED | 3-1571987-9 |
| A207J61ZQ0004 | 3-1571987-8 |
| A207J51ZQ0004 | 3-1571987-7 |
| A207J3ZQ0004 | 3-1571987-6 |
| A207J1ZQ0004 | 3-1571987-5 |
| A205J61ZQ0004 | 3-1571987-4 |
| A205J51ZQ0004 | 3-1571987-3 |
| A205J2ZQ0004 | 3-1571987-2 |
| A205J2CQ0004 | 3-1571987-1 |
| A205J1ZQ0004 | 3-1571987-0 |
| A205J1AV2Q0004 | 2-1571987-9 |
| NOT ASSIGNED | 2-1571987-8 |
| A203J61ZQ0004 | 2-1571987-7 |
| A203J51ZQ0004 | 2-1571987-6 |
| NOT ASSIGNED | 2-1571987-5 |
| A203J1ZQ0004 | 2-1571987-4 |
| NOT ASSIGNED | 2-1571987-3 |
| A203J1CQ204 | 2-1571987-2 |
| A203J1AV2Q004 | 2-1571987-1 |
| A203J1AQ004 | 2-1571987-0 |
| A201J61ZQ0004 | 1-1571987-9 |
| A201J61Z3Q0004 | 1-1571987-8 |
| A201J51ZQ9904 | 1-1571987-7 |
| NOT ASSIGNED | 1-1571987-6 |
| A201J51ZQ0004 | 1-1571987-5 |
| A201J50ZQ004 | 1-1571987-4 |
| A201J50AV2Q804 | 1-1571987-3 |
| A201J50AV2Q004 | 1-1571987-2 |
| A201J3ZQ004 | 1-1571987-1 |
| A201J3ZB004 | 1-1571987-0 |
| A201J2ZQ004 | 1571987-9 |
| A201J2CQ004 | 1571987-8 |
| A201J1ZQ004 | 1571987-7 |
| A201J1V3Q004 | 1571987-6 |
| A201J1CQ004 | 1571987-5 |
| A201J1AV2Q004 | 1571987-4 |
| A201J1AQ204 | 1571987-3 |
| A201J1AQ004 | 1571987-2 |
| NOT ASSIGNED | 1571987-1 |
| ALCO P/N | TE P/N |

| MATERIALS CHART | | |
|--------------------------|---------------------------|------------------|
| COMPONENT NAME | BASE MATERIAL | FINISH |
| CASE | DAP, RED, UL94 V-0 | |
| FRAME | STAINLESS STEEL | |
| B TERMINALS & CONTACTS | COPPER | GOLD OVER NICKEL |
| G TERMINALS & CONTACTS | COPPER | GOLD OVER SILVER |
| Q TERMINALS & CONTACTS | COPPER | SILVER |
| ACTUATOR | PHENOLIC, BLACK, UL94 V-1 | |
| ROCKER CAP | NYLON, BLACK, UL94 V-1 | |
| BUSHING & ACTUATOR LEVER | ZINC ALLOY | NICKEL |
| SPRING | MUSIC WIRE | |
| SUPPORT BRACKET | BRASS | TIN |
| PIVOT PIN | STEEL | NICKEL |
| TERMINAL SEAL | EPOXY, UL94 V-1 | |

| | | | | |
|---|--|----------------------------|---|-----------------|
| THIS DRAWING IS A CONTROLLED DOCUMENT. | | DWN M.BINNER 06JAN05 | Tyco Electronics Corporation Harrisburg, PA 17105-3608 | |
| DIMENSIONS: mm [INCHES] | | CHK M.ZITTO 06JAN05 | NAME GEMINI A SERIES ROCKER SWITCH DOUBLE POLE | |
| TOLERANCES UNLESS OTHERWISE SPECIFIED: 0 PLC ± - 1 PLC ± - 2 PLC ± - 3 PLC ± .010 4 PLC ± - ANGLES ± 4° | | APVD M.ZITTO 06JAN05 | DRAWING NO A2 00779 C=1571987 | |
| MATERIAL | | PRODUCT SPEC | RESTRICTED TO | |
| FINISH | | APPLICATION SPEC | SCALE 2:1 | SHEET 5 OF 5 |
| WEIGHT | | WEIGHT | REV A4 | |
| CUSTOMER DRAWING | | | | |



Компания «ЭлектроПласт» предлагает заключение долгосрочных отношений при поставках импортных электронных компонентов на взаимовыгодных условиях!

Наши преимущества:

- Оперативные поставки широкого спектра электронных компонентов отечественного и импортного производства напрямую от производителей и с крупнейших мировых складов;
- Поставка более 17-ти миллионов наименований электронных компонентов;
- Поставка сложных, дефицитных, либо снятых с производства позиций;
- Оперативные сроки поставки под заказ (от 5 рабочих дней);
- Экспресс доставка в любую точку России;
- Техническая поддержка проекта, помощь в подборе аналогов, поставка прототипов;
- Система менеджмента качества сертифицирована по Международному стандарту ISO 9001;
- Лицензия ФСБ на осуществление работ с использованием сведений, составляющих государственную тайну;
- Поставка специализированных компонентов (Xilinx, Altera, Analog Devices, Intersil, Interpoint, Microsemi, Aeroflex, Peregrine, Syfer, Eurofarad, Texas Instrument, Miteq, Cobham, E2V, MA-COM, Hittite, Mini-Circuits, General Dynamics и др.);

Помимо этого, одним из направлений компании «ЭлектроПласт» является направление «Источники питания». Мы предлагаем Вам помощь Конструкторского отдела:

- Подбор оптимального решения, техническое обоснование при выборе компонента;
- Подбор аналогов;
- Консультации по применению компонента;
- Поставка образцов и прототипов;
- Техническая поддержка проекта;
- Защита от снятия компонента с производства.



Как с нами связаться

Телефон: 8 (812) 309 58 32 (многоканальный)

Факс: 8 (812) 320-02-42

Электронная почта: org@eplast1.ru

Адрес: 198099, г. Санкт-Петербург, ул. Калинина, дом 2, корпус 4, литера А.