

Type MPF AC Motor Run Capacitors

Oval and Round, Oil Filled, 70 °C, Metallized Polypropylene Capacitors



Type MPF AC metallized polypropylene film dielectric capacitors offer a reliable option for alternating current applications. All devices are oil filled in metal cases with 4-prong quick disconnect terminals for easy assembly. These capacitors pack high capacitance and voltage capabilities into a small, light-weight package. The MPF is internally protected for fail-safe operation. These capacitors have extremely low DF that is ideal for AC motor-run applications.

Highlights

- Low DF
- Protected with a pressure sensitive interrupter
- Small size and light weight
- UL E71645
- CSA 219950
- Air conditioning and refrigeration applications
- Power factor correction
- Motors



Complies with the EU Directive 2002/95/EC requirement restricting the use of Lead (Pb), Mercury (Hg), Cadmium (Cd), Hexavalent chromium (Cr(VI)), PolyBrominated Biphenyls (PBB) and PolyBrominated Diphenyl Ethers (PBDE).

Specifications

| | |
|-------------------------------------|--|
| Capacitance Range: | 1 to 80 μ F |
| Voltage Ratings: | 330 Vac, 370 Vac, 440 Vac |
| Capacitance Tolerance: | $\pm 10\%$ |
| Operating Temperature Range: | $-40\text{ }^{\circ}\text{C}$ to $+70\text{ }^{\circ}\text{C}$ |
| Operating Frequency: | 50 to 60 Hz |
| Dissipation Factor: | 0.1% max @ 60 Hz |

Outline Drawings

| Oval | | | | |
|-------|----------|----------|--------|------------------|
| Style | A | B | D | Industry Type |
| 32 | 1 5/16" | 2 5/32" | 13/16" | 1 1/4" Flat Oval |
| 37 | 1 29/32" | 2 29/32" | 13/16" | 1 3/4" Flat Oval |
| 38 | 1 31/32" | 3 21/32" | 13/16" | 2.0" Flat Oval |

*See Ratings Table for "H" dimension



| Round | | | | |
|-------|--------|--------|--------|---------------|
| Style | A | B | D | Industry Type |
| 21 | 1 3/4" | 1 7/8" | 13/16" | 1 3/4" Round |
| 23 | 2.0" | 2 1/8" | 13/16" | 2.0" Round |
| 24 | 2 1/2" | 2 5/8" | 13/16" | 2 1/2" Round |

*See Ratings Table for "H" dimension



Type MPF AC Motor Run Capacitors

Ratings

Oval

| Cap (μ F) | Volts (Vac) | Base Style | Height (In.) | Catalog Part Number |
|-------------------|----------------|---------------|-----------------|------------------------|
| 370 Vac | | | | |
| 1.0 | 370 | 32 | 2.13 | 32FD3701-F |
| 2.0 | 370 | 32 | 2.13 | 32FD3702-F |
| 3.0 | 370 | 32 | 2.13 | 32FD3703-F |
| 4.0 | 370 | 32 | 2.13 | 32FD3704-F |
| 5.0 | 370 | 32 | 2.38 | 32FD3705-F |
| 6.0 | 370 | 32 | 2.38 | 32FD3706-F |
| 7.5 | 370 | 32 | 2.38 | 32FD37075-F |
| 10.0 | 370 | 32 | 2.63 | 32FD3710-F |
| 12.5 | 370 | 32 | 3.00 | 32FD37125-F |
| 12.5 | 370 | 37 | 2.63 | 37FD37125-F |
| 15.0 | 370 | 37 | 2.63 | 37FD3715-F |
| 17.5 | 370 | 37 | 2.63 | 37FD37175-F |
| 20.0 | 370 | 37 | 2.63 | 37FD3720-F |
| 22.5 | 370 | 37 | 2.63 | 37FD37225-F |
| 25.0 | 370 | 37 | 2.63 | 37FD3725-F |
| 27.5 | 370 | 38 | 3.00 | 38FD37275-F |
| 30.0 | 370 | 37 | 3.00 | 37FD3730-F |
| 30.0 | 370 | 38 | 3.00 | 38FD3730-F |
| 35.0 | 370 | 37 | 3.75 | 37FD3735-F |
| 35.0 | 370 | 38 | 3.00 | 38FD3735-F |
| 40.0 | 370 | 37 | 3.75 | 37FD3740-F |
| 40.0 | 370 | 38 | 3.00 | 38FD3740-F |
| 45.0 | 370 | 37 | 3.75 | 37FD3745-F |
| 45.0 | 370 | 38 | 3.00 | 38FD3745-F |
| 50.0 | 370 | 38 | 3.00 | 38FD3750-F |
| 70.0 | 370 | 38 | 3.75 | 38FD3770-F |
| 440 Vac | | | | |
| 1.0 | 440 | 32 | 2.13 | 32FB4401-F |
| 2.0 | 440 | 32 | 2.13 | 32FB4402-F |
| 3.0 | 440 | 32 | 2.38 | 32FB4403-F |
| 4.0 | 440 | 32 | 2.38 | 32FB4404-F |
| 5.0 | 440 | 32 | 2.63 | 32FB4405-F |
| 6.0 | 440 | 32 | 2.63 | 32FB4406-F |
| 7.5 | 440 | 32 | 2.63 | 32FB44075-F |
| 7.5 | 440 | 37 | 2.63 | 37FB44075-F |
| 10.0 | 440 | 32 | 3.75 | 32FB4410-F |
| 10.0 | 440 | 37 | 2.63 | 37FB4410-F |
| 12.5 | 440 | 37 | 2.63 | 37FB44125-F |
| 15.0 | 440 | 37 | 2.63 | 37FB4415-F |
| 17.5 | 440 | 37 | 2.63 | 37FB44175-F |
| 20.0 | 440 | 37 | 3.00 | 37FB4420-F |
| 20.0 | 440 | 38 | 3.00 | 38FB4420-F |
| 25.0 | 440 | 37 | 3.75 | 37FB4425-F |
| 25.0 | 440 | 38 | 3.75 | 38FB4425-F |
| 30.0 | 440 | 38 | 3.75 | 38FB4430-F |
| 35.0 | 440 | 37 | 4.75 | 37FB4435-F |
| 35.0 | 440 | 38 | 3.75 | 38FB4435-F |
| 40.0 | 440 | 37 | 4.75 | 37FB4440-F |
| 40.0 | 440 | 38 | 3.75 | 38FB4440-F |
| 45.0 | 440 | 38 | 3.75 | 38FB4445-F |
| 50.0 | 440 | 38 | 3.75 | 38FB4450-F |
| 55.0 | 440 | 38 | 4.75 | 38FB4455-F |
| 60.0 | 440 | 38 | 4.75 | 38FB4460-F |

Round

| Cap (μ F) | Volts (Vac) | Base Style | Height (In.) | Catalog Part Number |
|-------------------|----------------|---------------|-----------------|------------------------|
| 330 Vac | | | | |
| 3.0 | 330 | 23 | 2.63 | 23FD3303-F |
| 4.0 | 330 | 23 | 2.63 | 23FD3304-F |
| 5.0 | 330 | 23 | 2.63 | 23FD3305-F |
| 6.0 | 330 | 23 | 2.63 | 23FD3306-F |
| 7.0 | 330 | 23 | 2.63 | 23FD3307-F |
| 8.0 | 330 | 23 | 2.63 | 23FD3308-F |
| 10.0 | 330 | 23 | 2.63 | 23FD3310-F |
| 370 Vac | | | | |
| 3.0 | 370 | 21 | 2.63 | 21FD3703-F |
| 4.0 | 370 | 21 | 2.63 | 21FD3704-F |
| 5.0 | 370 | 21 | 2.63 | 21FD3705-F |
| 6.0 | 370 | 21 | 2.63 | 21FD3706-F |
| 7.0 | 370 | 21 | 2.63 | 21FD3707-F |
| 8.0 | 370 | 21 | 2.63 | 21FD3708-F |
| 10.0 | 370 | 21 | 2.63 | 21FD3710-F |
| 12.5 | 370 | 21 | 2.63 | 21FD37125-F |
| 15.0 | 370 | 21 | 2.63 | 21FD3715-F |
| 17.5 | 370 | 21 | 2.63 | 21FD37175-F |
| 20 | 370 | 21 | 2.63 | 21FD3720-F |
| 25 | 370 | 21 | 3.00 | 21FD3725-F |
| 25 | 370 | 23 | 3.00 | 23FD3725-F |
| 30 | 370 | 21 | 3.00 | 21FD3730-F |
| 30 | 370 | 23 | 3.00 | 23FD3730-F |
| 35 | 370 | 21 | 3.75 | 21FD3735-F |
| 35 | 370 | 23 | 3.00 | 23FD3735-F |
| 40 | 370 | 21 | 3.75 | 21FD3740-F |
| 40 | 370 | 23 | 3.00 | 23FD3740-F |
| 45 | 370 | 23 | 3.75 | 23FD3745-F |
| 45 | 370 | 24 | 3.00 | 24FD3745-F |
| 50 | 370 | 23 | 3.75 | 23FD3750-F |
| 50 | 370 | 24 | 3.00 | 24FD3750-F |
| 55 | 370 | 23 | 3.75 | 23FD3755-F |
| 55 | 370 | 24 | 3.00 | 24FD3755-F |
| 60 | 370 | 23 | 3.75 | 23FD3760-F |
| 60 | 370 | 24 | 3.00 | 24FD3760-F |
| 65 | 370 | 24 | 3.75 | 24FD3765-F |
| 70 | 370 | 24 | 3.75 | 24FD3770-F |
| 80 | 370 | 24 | 4.75 | 24FD3780-F |
| 440 Vac | | | | |
| 15 | 440 | 21 | 2.63 | 21FB4415-F |
| 20 | 440 | 21 | 3.00 | 21FB4420-F |
| 20 | 440 | 23 | 3.00 | 23FB4420-F |
| 22.5 | 440 | 21 | 3.00 | 21FB44225-F |
| 22.5 | 440 | 23 | 3.00 | 23FB44225-F |
| 25 | 440 | 21 | 3.75 | 21FB4425-F |
| 25 | 440 | 23 | 3.00 | 23FB4425-F |
| 30 | 440 | 23 | 3.75 | 23FB4430-F |
| 30 | 440 | 24 | 3.00 | 24FB4430-F |
| 35 | 440 | 23 | 3.75 | 23FB4435-F |
| 35 | 440 | 24 | 3.00 | 24FB4435-F |
| 40 | 440 | 23 | 3.75 | 23FB4440-F |
| 40 | 440 | 24 | 3.75 | 24FB4440-F |
| 45 | 440 | 24 | 3.75 | 24FB4445-F |
| 50 | 440 | 24 | 3.75 | 24FB4450-F |
| 55 | 440 | 24 | 3.75 | 24FB4455-F |
| 60 | 440 | 24 | 4.75 | 24FB4460-F |
| 70 | 440 | 24 | 4.75 | 24FB4470-F |

Type MPF AC Motor Run Capacitors

Hardware for Round and Oval Metals Cans

Oval Capacitor Hardware

Mounting Brackets #32107

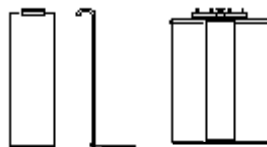
| Case Code | Bracket |
|-----------|---------|
| A | 32107-1 |
| C | 32107-2 |
| D | 32107-3 |



End Mount Footed Bracket (2 required) #30434

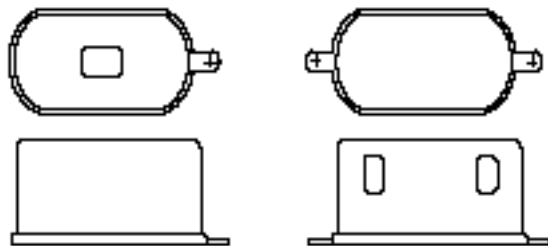


Side Mount Footed Bracket (2 required) #31762



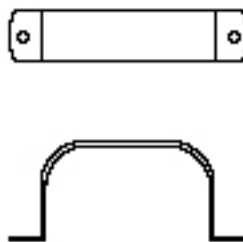
| H (Inches) | End Mount | Side Mount |
|------------|-----------|------------|
| 2.13 | 30434-33 | 31762-45 |
| 2.38 | 30434-37 | 31762-46 |
| 2.63 | 30434-41 | 31762-47 |
| 2.88 | 30434-45 | 31762-48 |
| 3.13 | 30434-49 | 31762-49 |
| 3.50 | 30434-55 | 31762-50 |
| 3.75 | 30434-59 | 31762-83 |
| 3.88 | 30434-61 | 31762-51 |
| 4.25 | 30434-67 | 31762-52 |
| 4.75 | 30434-75 | 31762-54 |
| 5.13 | 30434-81 | 31762-132 |
| 5.25 | 30434-83 | 31762-55 |
| 5.75 | 30434-91 | 31762-56 |
| 6.25 | 30434-99 | 31762-59 |
| 6.75 | 30434-107 | 31762-60 |
| 7.25 | 30434-115 | 31762-62 |
| 8.00 | 30434-127 | 31762-63 |
| 9.00 | 30434-143 | 31762-78 |

Insulating Terminal Boots UL Approved Material



Wrap Around Bracket

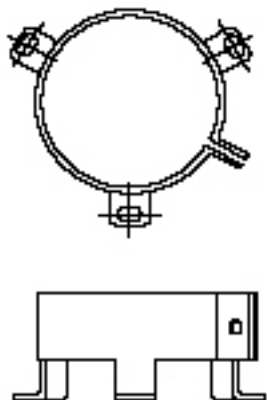
| Case Code | Bracket |
|-----------|---------|
| A | 30393-5 |
| C | 30393-9 |
| D | OB3 |



Round Capacitor Hardware

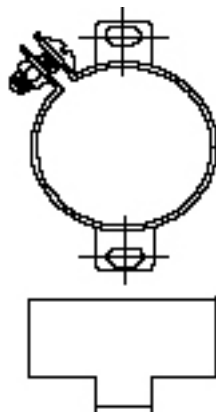
3 Footed Round Mounting Bracket

| Case Code | Bracket |
|-----------|---------|
| P | VR6B |
| S | VR8B |
| T | VR10B |

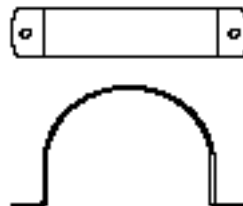


2 Footed Round Mounting Bracket

| Case Code | Bracket |
|-----------|---------|
| P | 32107-6 |
| S | 32107-7 |
| T | 32107-8 |



Wrap Around Bracket



| Case Code | Bracket |
|-----------|---------|
| P | RB175 |
| S | RB200 |
| T | RB250 |



Компания «ЭлектроПласт» предлагает заключение долгосрочных отношений при поставках импортных электронных компонентов на взаимовыгодных условиях!

Наши преимущества:

- Оперативные поставки широкого спектра электронных компонентов отечественного и импортного производства напрямую от производителей и с крупнейших мировых складов;
- Поставка более 17-ти миллионов наименований электронных компонентов;
- Поставка сложных, дефицитных, либо снятых с производства позиций;
- Оперативные сроки поставки под заказ (от 5 рабочих дней);
- Экспресс доставка в любую точку России;
- Техническая поддержка проекта, помощь в подборе аналогов, поставка прототипов;
- Система менеджмента качества сертифицирована по Международному стандарту ISO 9001;
- Лицензия ФСБ на осуществление работ с использованием сведений, составляющих государственную тайну;
- Поставка специализированных компонентов (Xilinx, Altera, Analog Devices, Intersil, Interpoint, Microsemi, Aeroflex, Peregrine, Syfer, Eurofarad, Texas Instrument, Miteq, Cobham, E2V, MA-COM, Hittite, Mini-Circuits, General Dynamics и др.);

Помимо этого, одним из направлений компании «ЭлектроПласт» является направление «Источники питания». Мы предлагаем Вам помощь Конструкторского отдела:

- Подбор оптимального решения, техническое обоснование при выборе компонента;
- Подбор аналогов;
- Консультации по применению компонента;
- Поставка образцов и прототипов;
- Техническая поддержка проекта;
- Защита от снятия компонента с производства.



Как с нами связаться

Телефон: 8 (812) 309 58 32 (многоканальный)

Факс: 8 (812) 320-02-42

Электронная почта: org@eplast1.ru

Адрес: 198099, г. Санкт-Петербург, ул. Калинина, дом 2, корпус 4, литера А.