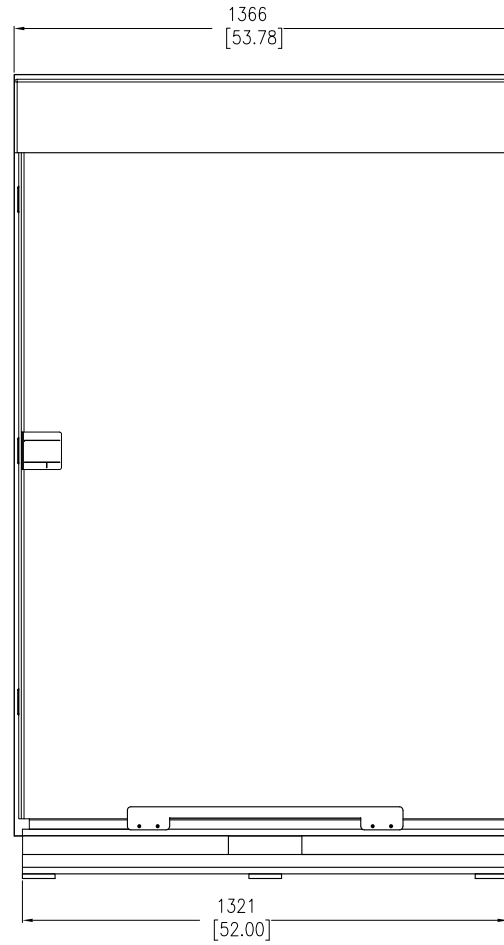
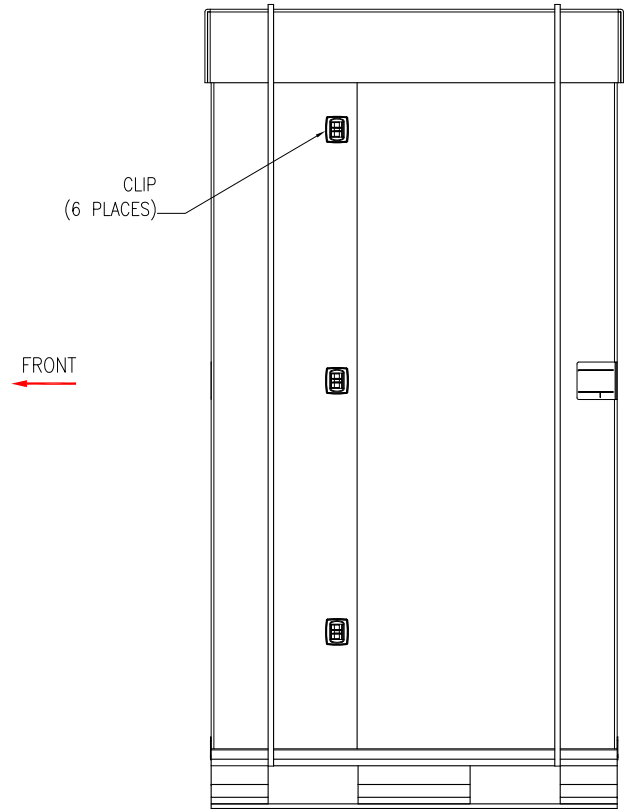


FRONT VIEW



LEFT SIDE VIEW



REAR VIEW

NOTES:

1. INSTALLATION SHALL COMPLY WITH ALL APPLICABLE NATIONAL, STATE AND LOCAL ELECTRICAL REGULATIONS.
2. REFER TO PRODUCT DOCUMENTATION FOR ADDITIONAL DETAILS PRIOR TO INSTALLATION AND SITE PREPARATION WORK.
3. ALL DIMENSIONS ARE IN MILLIMETERS [INCHES].
4. SHIPPING WEIGHT OF UNIT IS 242.22 Kg [534 LBS].

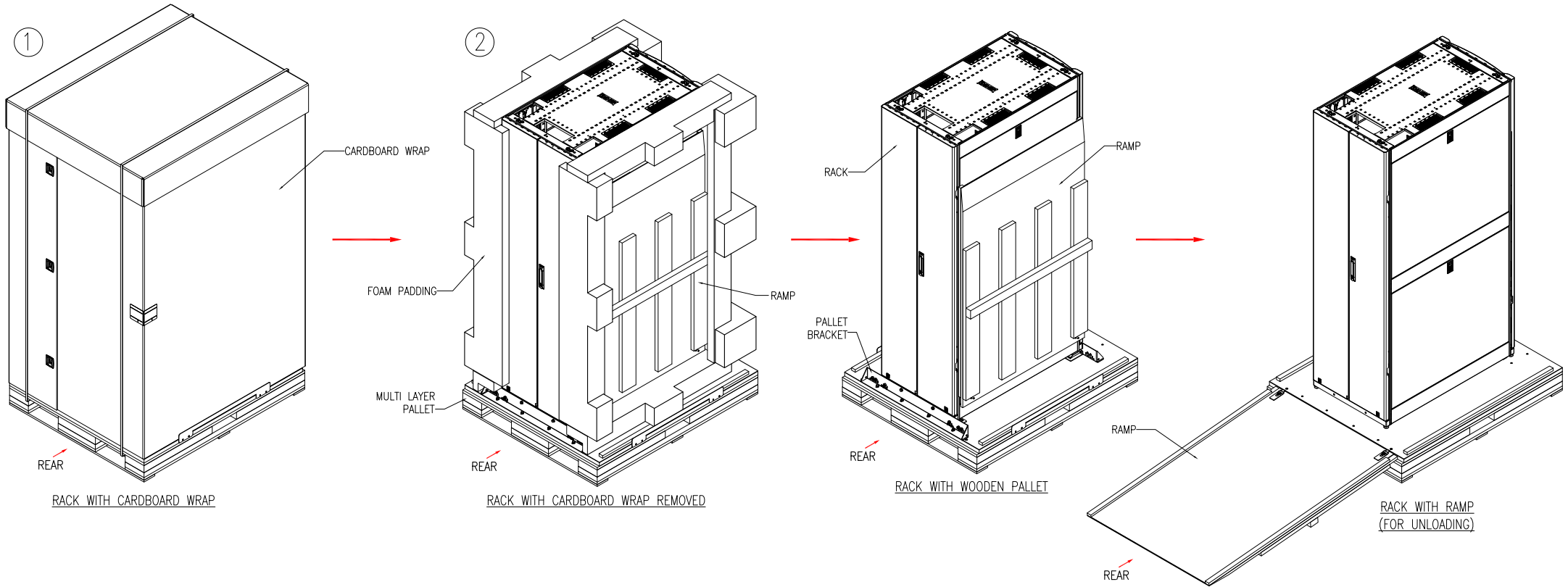
THIS DRAWING AND SPECIFICATIONS HEREIN ARE THE PROPERTY OF SCHNEIDER ELECTRIC AND SHALL NOT BE COPIED, REPRODUCED OR USED IN WHOLE OR IN PART, AS THE BASIS FOR THE MANUFACTURE OR SALE OF ITEMS WITHOUT WRITTEN PERMISSION FROM SCHNEIDER ELECTRIC. THIS DRAWING IS BASED UPON LATEST AVAILABLE INFORMATION AND IS SUBJECT TO CHANGE WITHOUT NOTICE.



TITLE: NetShelter SX 42U  
600mm WIDE X 1070mm DEEP  
ENCLOSURE WITH SIDES-SHOCK PACKAGING  
PACKING DETAILS  
PROJECT: SUBMITTAL DRAWINGS SHEET 1 OF 6

DWG NO: AR3100SP REV. 0  
DRAWN BY: JAYAPRAKASH 03-JUL-15  
ENGINEER: D HUDSON/ R PHILLIPS 06-JUL-15  
APPROVED BY: GREG IVEY 06-JUL-15  
FIRST ANGLE PROJECTION

# UNPACKING AND UNLOADING STEPS



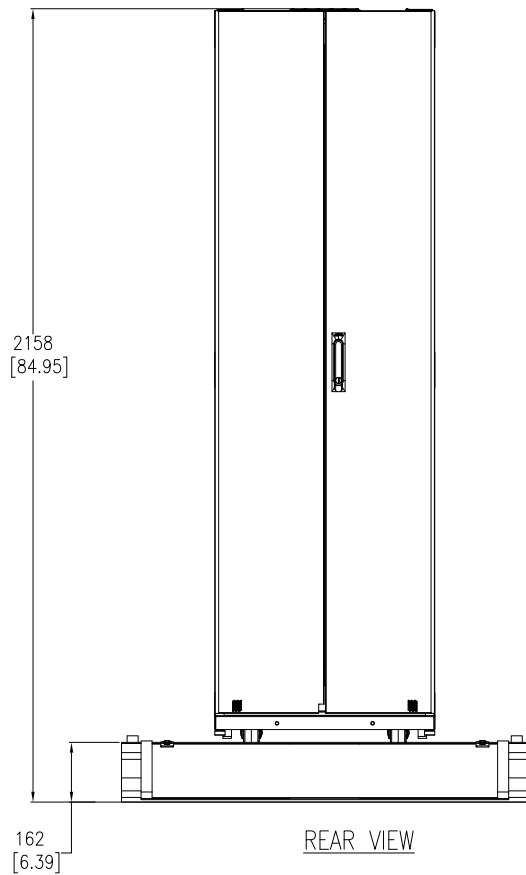
- NOTES:**
1. INSTALLATION SHALL COMPLY WITH ALL APPLICABLE NATIONAL, STATE AND LOCAL ELECTRICAL REGULATIONS.
  2. REFER TO PRODUCT DOCUMENTATION FOR ADDITIONAL DETAILS PRIOR TO INSTALLATION AND SITE PREPARATION WORK.

THIS DRAWING AND SPECIFICATIONS HEREIN ARE THE PROPERTY OF SCHNEIDER ELECTRIC AND SHALL NOT BE COPIED, REPRODUCED OR USED IN WHOLE OR IN PART, AS THE BASIS FOR THE MANUFACTURE OR SALE OF ITEMS WITHOUT WRITTEN PERMISSION FROM SCHNEIDER ELECTRIC. THIS DRAWING IS BASED UPON LATEST AVAILABLE INFORMATION AND IS SUBJECT TO CHANGE WITHOUT NOTICE.

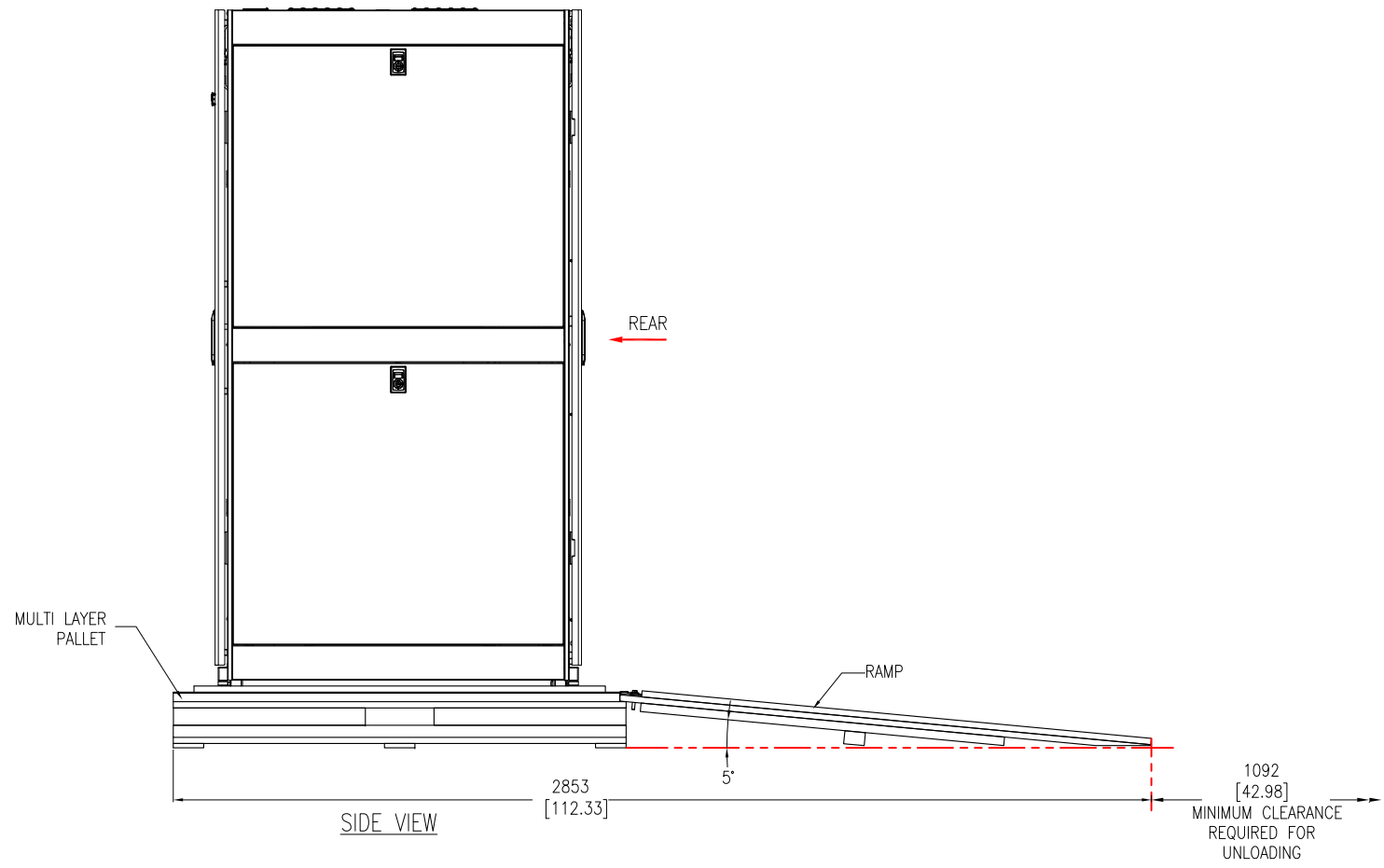


TITLE: NetShelter SX 42U  
600mm WIDE X 1070mm DEEP  
ENCLOSURE WITH SIDES-SHOCK PACKAGING  
ISOMETRIC VIEWS  
PROJECT: SUBMITTAL DRAWINGS SHEET 2 OF 6

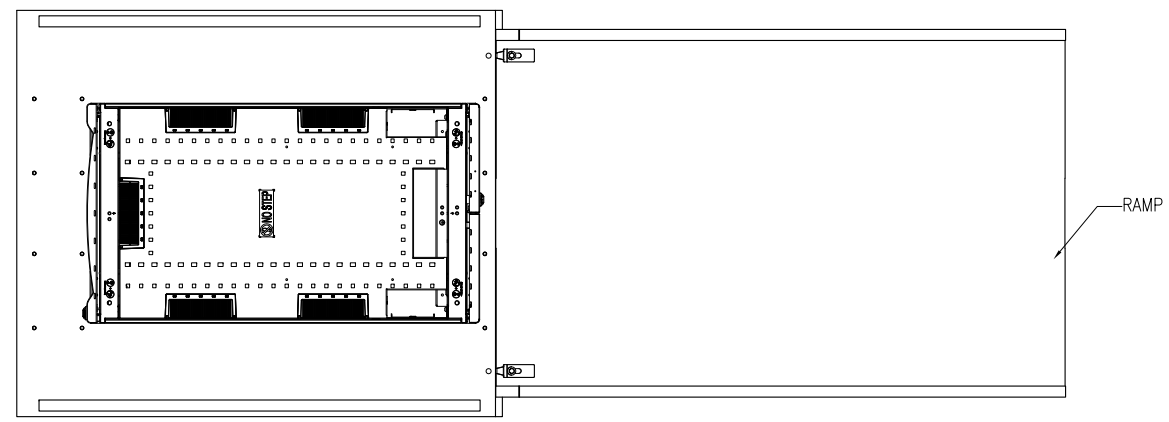
DWG NO: AR3100SP REV. 0  
DRAWN BY: JAYAPRAKASH 03-JUL-15  
ENGINEER: D HUDSON/ R PHILLIPS 06-JUL-15  
APPROVED BY: GREG IVEY 06-JUL-15  
FIRST ANGLE PROJECTION



REAR VIEW



SIDE VIEW



TOP VIEW

- NOTES:**
1. INSTALLATION SHALL COMPLY WITH ALL APPLICABLE NATIONAL, STATE AND LOCAL ELECTRICAL REGULATIONS.
  2. REFER TO PRODUCT DOCUMENTATION FOR ADDITIONAL DETAILS PRIOR TO INSTALLATION AND SITE PREPARATION WORK.
  3. ALL DIMENSIONS ARE IN MILLIMETERS [INCHES].

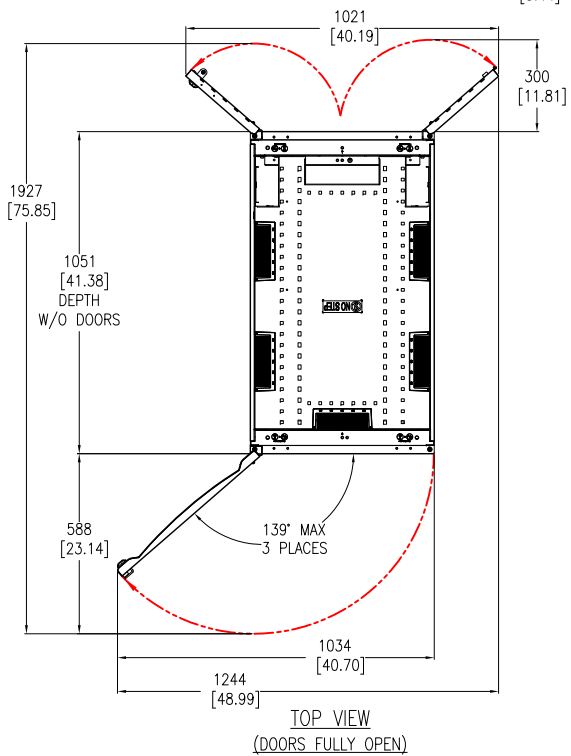
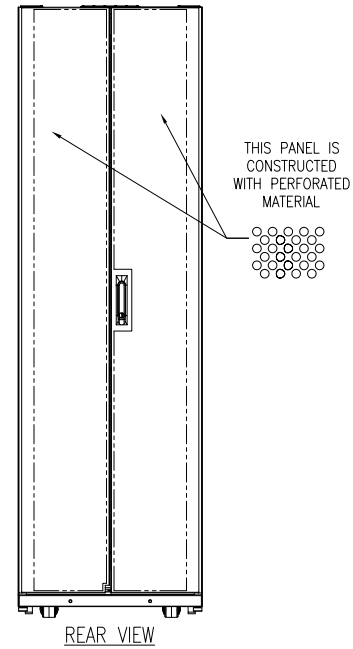
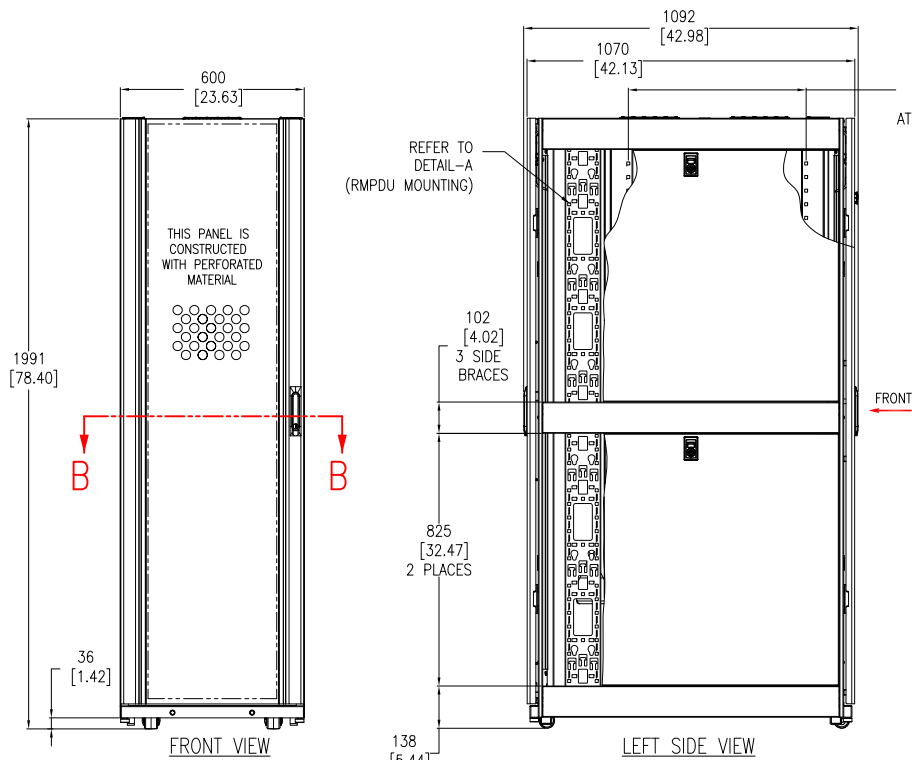
THIS DRAWING AND SPECIFICATIONS HEREIN ARE THE PROPERTY OF SCHNEIDER ELECTRIC AND SHALL NOT BE COPIED, REPRODUCED OR USED IN WHOLE OR IN PART, AS THE BASIS FOR THE MANUFACTURE OR SALE OF ITEMS WITHOUT WRITTEN PERMISSION FROM SCHNEIDER ELECTRIC. THIS DRAWING IS BASED UPON LATEST AVAILABLE INFORMATION AND IS SUBJECT TO CHANGE WITHOUT NOTICE.



TITLE: NetShelter SX 42U  
 600mm WIDE X 1070mm DEEP  
 ENCLOSURE WITH SIDES-SHOCK PACKAGING  
 UNLOADING DETAILS  
 PROJECT: SUBMITTAL DRAWINGS SHEET 3 OF 6

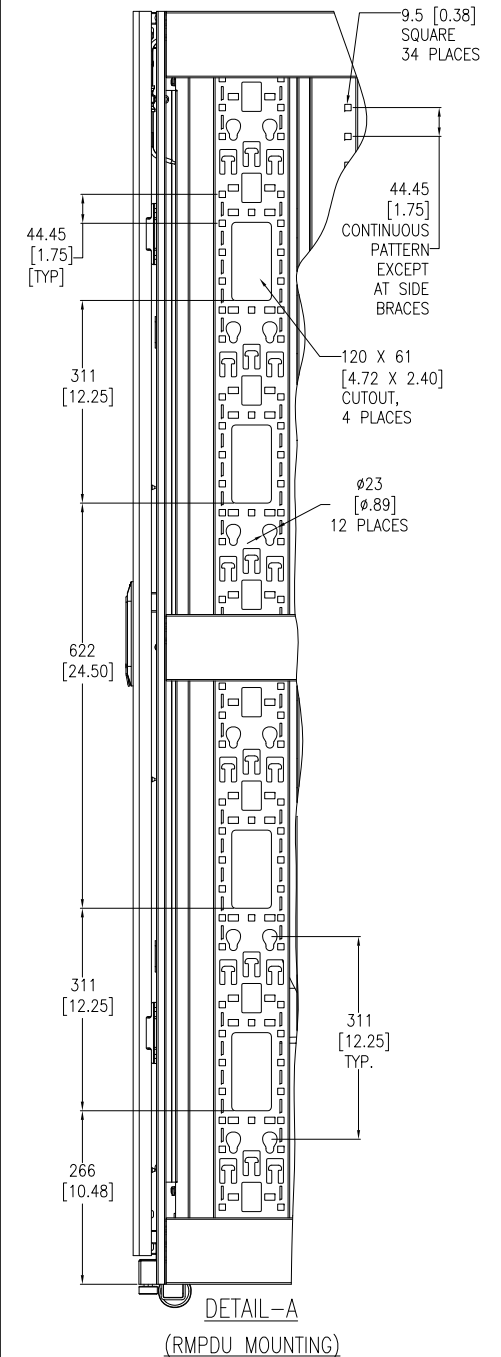
DWG NO: AR3100SP  
 DRAWN BY: JAYAPRAKASH  
 ENGINEER: D HUDSON/ R PHILLIPS  
 APPROVED BY: GREG IVEY

REV. 0  
 03-JUL-15  
 06-JUL-15  
 06-JUL-15  
 FIRST ANGLE PROJECTION



**NOTES:**

1. INSTALLATION SHALL COMPLY WITH ALL APPLICABLE NATIONAL, STATE AND LOCAL ELECTRICAL REGULATIONS.
2. REFER TO PRODUCT DOCUMENTATION FOR ADDITIONAL DETAILS PRIOR TO INSTALLATION AND SITE PREPARATION WORK.
3. ALL DIMENSIONS ARE IN MILLIMETERS [INCHES].
4. NET WEIGHT OF UNIT IS 125.09kg [275.2 lb].
5. MAXIMUM INSTALLED EQUIPMENT WEIGHT IS 907kg [2000 lb].
6. CABLE ENTRY IS TOP OR BOTTOM OF THE UNIT.
7. FRONT AND REAR SERVICE ACCESS REQUIRED.
8. AIR FLOW AND SERVICE REQUIREMENTS, AS WELL AS MINIMUM CLEARANCE TO FIRE SUPPRESSION SYSTEMS SHOULD BE CONSIDERED WHEN LOCATING THE ENCLOSURE.

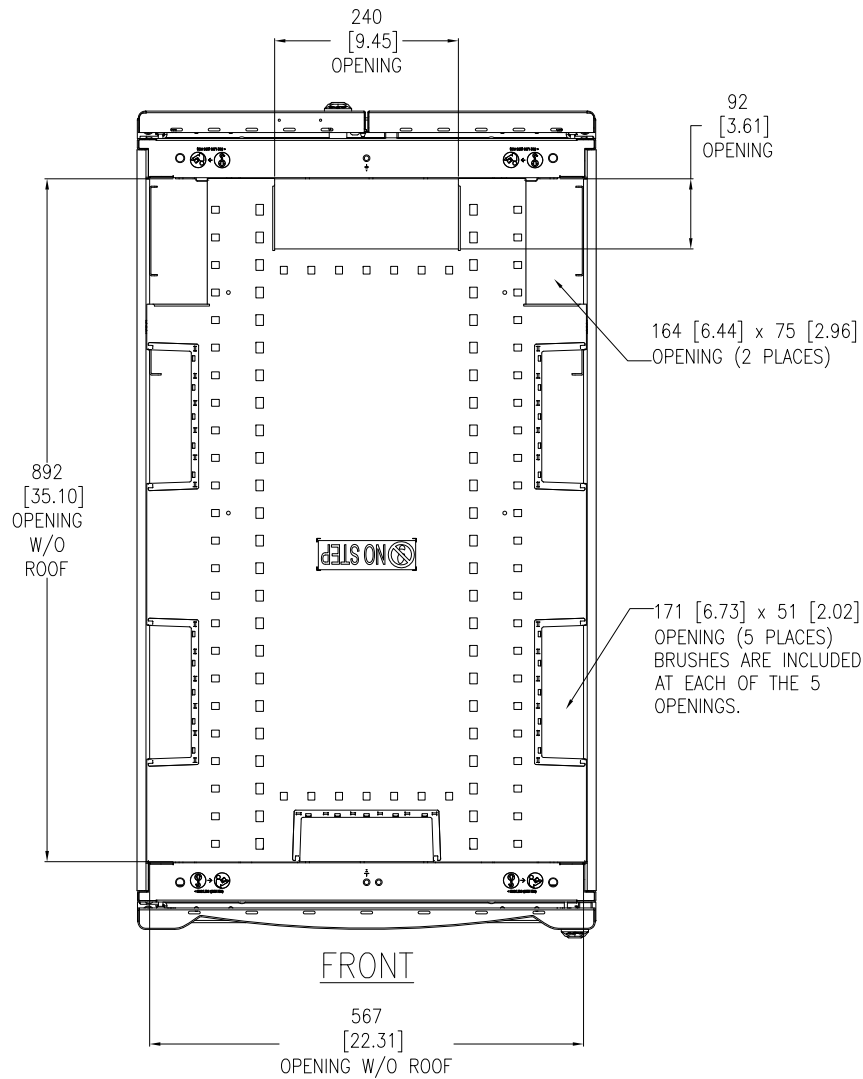


THIS DRAWING AND SPECIFICATIONS HEREIN ARE THE PROPERTY OF SCHNEIDER ELECTRIC AND SHALL NOT BE COPIED, REPRODUCED OR USED IN WHOLE OR IN PART, AS THE BASIS FOR THE MANUFACTURE OR SALE OF ITEMS WITHOUT WRITTEN PERMISSION FROM SCHNEIDER ELECTRIC. THIS DRAWING IS BASED UPON LATEST AVAILABLE INFORMATION AND IS SUBJECT TO CHANGE WITHOUT NOTICE.

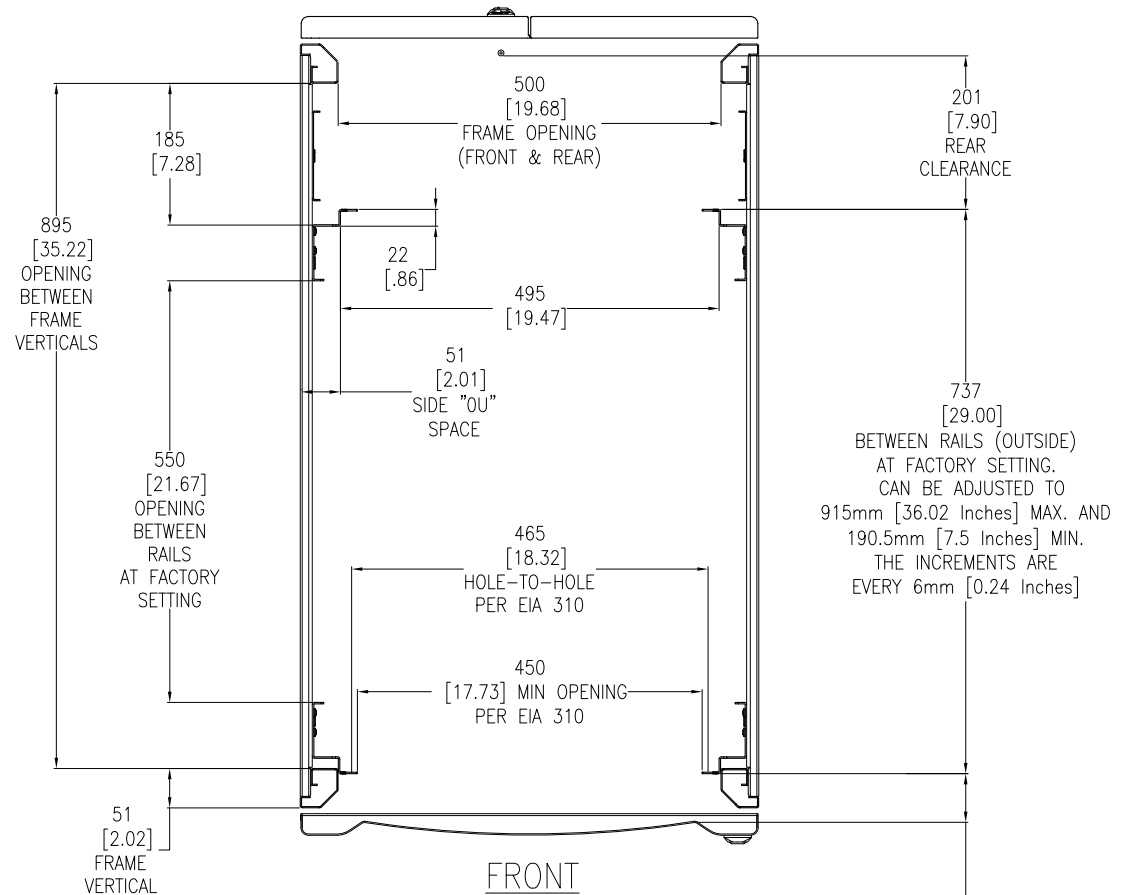


TITLE: NetShelter SX 42U  
600mm WIDE X 1070mm DEEP  
ENCLOSURE WITH SIDES-SHOCK PACKAGING  
GENERAL ARRANGEMENT  
PROJECT: SUBMITTAL DRAWINGS SHEET 4 OF 6

DWG NO: AR310OSP  
REV: 0  
DRAWN BY: JAYAPRAKASH 03-JUL-15 FIRST ANGLE  
ENGINEER: D HUDSON/ R PHILLIPS 06-JUL-15  
APPROVED BY: GREG IVEY 06-JUL-15 PROJECTION



TOP VIEW  
CABLE OPENINGS  
(COVERS REMOVED)



SECTION B-B  
STANDARD POSITIONS FOR  
MOUNTING RAILS AND  
THEIR ADJUSTABILITY  
(LOOKING DOWN)

64 [2.50]  
FRONT BEZEL  
CLEARANCE  
CAN BE ADJUSTED TO  
800mm 31.50 [Inches] MAX. AND  
51mm [2.01 Inches] MIN.  
THE INCREMENTS  
ARE EVERY 6mm [0.24 Inches]

- NOTES:**
1. INSTALLATION SHALL COMPLY WITH ALL APPLICABLE NATIONAL, STATE AND LOCAL ELECTRICAL REGULATIONS.
  2. REFER TO PRODUCT DOCUMENTATION FOR ADDITIONAL DETAILS PRIOR TO INSTALLATION AND SITE PREPARATION WORK.
  3. ALL DIMENSIONS ARE IN MILLIMETERS [INCHES].

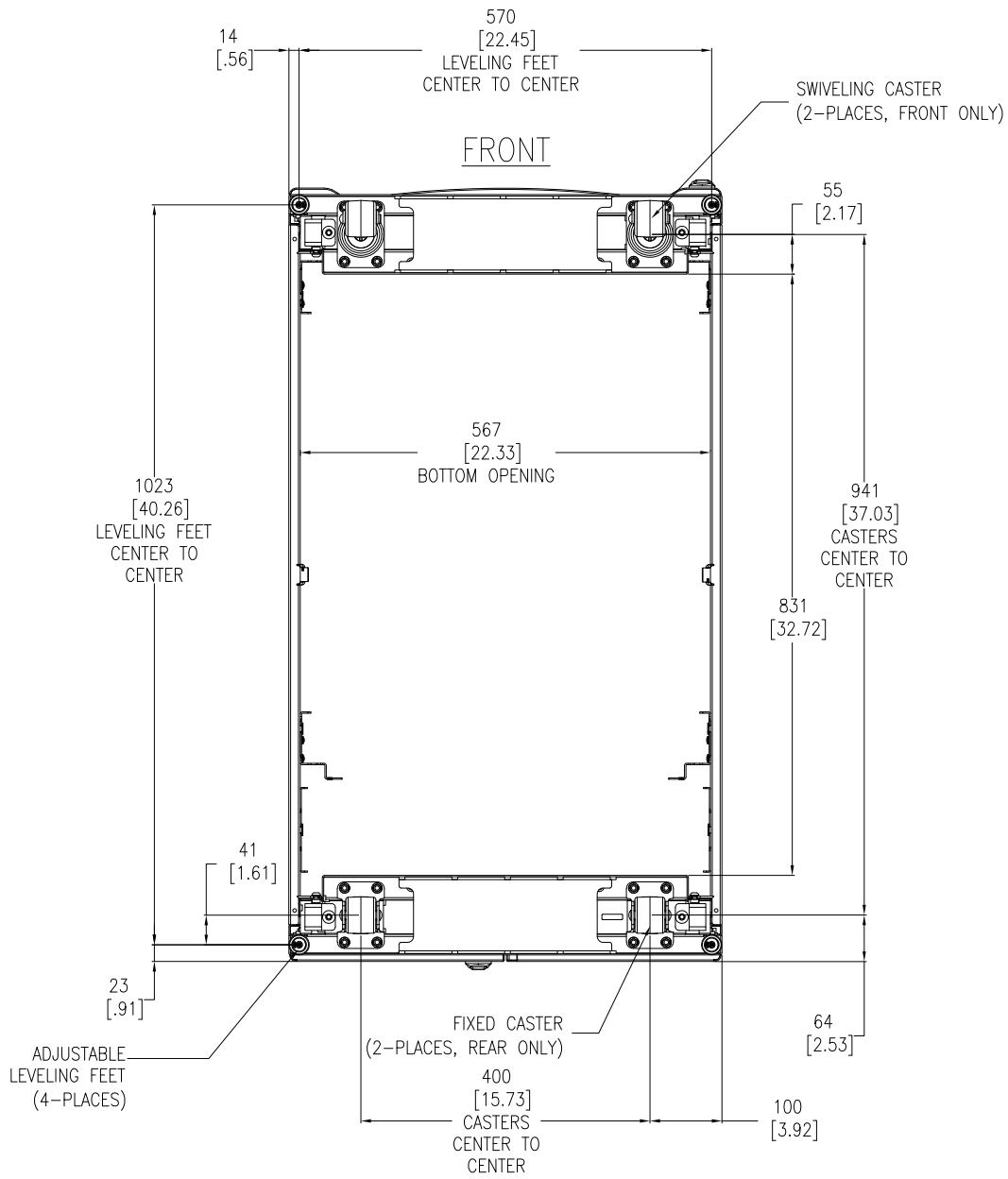
THIS DRAWING AND SPECIFICATIONS HEREIN ARE THE PROPERTY OF SCHNEIDER ELECTRIC AND SHALL NOT BE COPIED, REPRODUCED OR USED IN WHOLE OR IN PART, AS THE BASIS FOR THE MANUFACTURE OR SALE OF ITEMS WITHOUT WRITTEN PERMISSION FROM SCHNEIDER ELECTRIC. THIS DRAWING IS BASED UPON LATEST AVAILABLE INFORMATION AND IS SUBJECT TO CHANGE WITHOUT NOTICE.



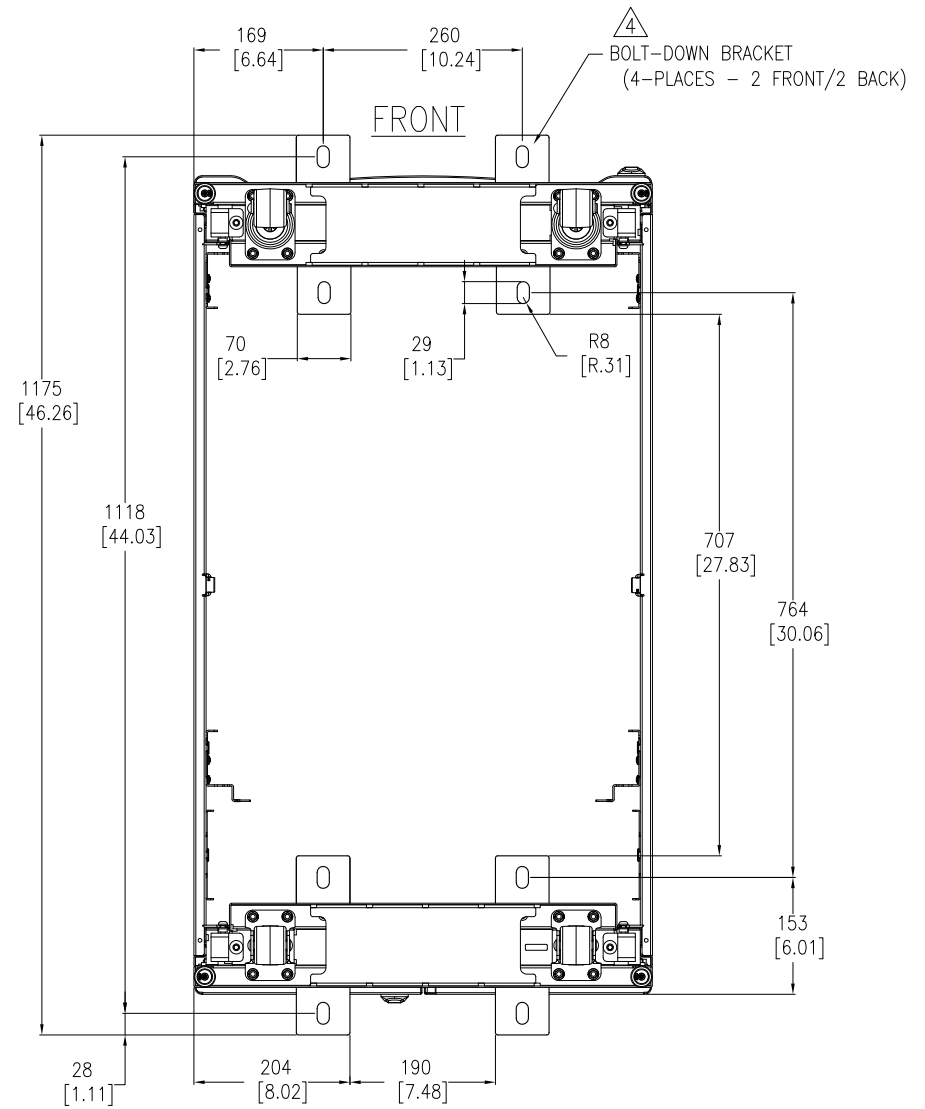
TITLE: NetShelter SX 42U  
600mm WIDE X 1070mm DEEP  
ENCLOSURE WITH SIDES-SHOCK PACKAGING  
TOP VIEW & SECTION VIEW

PROJECT: SUBMITTAL DRAWINGS SHEET 5 OF 6

DWG NO: AR3100SP REV: 0  
DRAWN BY: JAYAPRAKASH 03-JUL-15 FIRST ANGLE  
ENGINEER: D HUDSON/ R PHILLIPS 06-JUL-15 PROJECTION  
APPROVED BY: GREG MEYER 06-JUL-15



**BOTTOM VIEW**  
(TOP ROOF NOT SHOWN)



**BOTTOM VIEW**  
(WITH OPTIONAL BOLT-DOWN BRACKETS FOR ANCHORING)  
TOP ROOF NOT SHOWN

- NOTES:**
1. INSTALLATION SHALL COMPLY WITH ALL APPLICABLE NATIONAL, STATE AND LOCAL ELECTRICAL REGULATIONS.
  2. REFER TO PRODUCT DOCUMENTATION FOR ADDITIONAL DETAILS PRIOR TO INSTALLATION AND SITE PREPARATION WORK.
  3. ALL DIMENSIONS ARE IN MILLIMETERS [INCHES].
- △4. BOLT-DOWN KIT (SKU# AR7701) IS OPTIONAL AND HAS TO BE ORDERED SEPARATELY.

THIS DRAWING AND SPECIFICATIONS HEREIN ARE THE PROPERTY OF SCHNEIDER ELECTRIC AND SHALL NOT BE COPIED, REPRODUCED OR USED IN WHOLE OR IN PART, AS THE BASIS FOR THE MANUFACTURE OR SALE OF ITEMS WITHOUT WRITTEN PERMISSION FROM SCHNEIDER ELECTRIC. THIS DRAWING IS BASED UPON LATEST AVAILABLE INFORMATION AND IS SUBJECT TO CHANGE WITHOUT NOTICE.



**TITLE:**  
NetShelter SX 42U  
600mm WIDE X 1070mm DEEP  
ENCLOSURE WITH SIDES-SHOCK PACKAGING  
BOTTOM VIEWS

**PROJECT:** SUBMITTAL DRAWINGS **SHEET:** 6 OF 6

**DWG NO:** AR3100SP **REV:** 0

**DRAWN BY:** JAYAPRAKASH **03-JUL-15** **FIRST**

**ENGINEER:** D HUDSON/ R PHILLIPS **06-JUL-15** **ANGLE**

**APPROVED BY:** GREG IVEY **06-JUL-15** **PROJECTION**



Компания «ЭлектроПласт» предлагает заключение долгосрочных отношений при поставках импортных электронных компонентов на взаимовыгодных условиях!

Наши преимущества:

- Оперативные поставки широкого спектра электронных компонентов отечественного и импортного производства напрямую от производителей и с крупнейших мировых складов;
- Поставка более 17-ти миллионов наименований электронных компонентов;
- Поставка сложных, дефицитных, либо снятых с производства позиций;
- Оперативные сроки поставки под заказ (от 5 рабочих дней);
- Экспресс доставка в любую точку России;
- Техническая поддержка проекта, помощь в подборе аналогов, поставка прототипов;
- Система менеджмента качества сертифицирована по Международному стандарту ISO 9001;
- Лицензия ФСБ на осуществление работ с использованием сведений, составляющих государственную тайну;
- Поставка специализированных компонентов (Xilinx, Altera, Analog Devices, Intersil, Interpoint, Microsemi, Aeroflex, Peregrine, Syfer, Eurofarad, Texas Instrument, Miteq, Cobham, E2V, MA-COM, Hittite, Mini-Circuits, General Dynamics и др.);

Помимо этого, одним из направлений компании «ЭлектроПласт» является направление «Источники питания». Мы предлагаем Вам помощь Конструкторского отдела:

- Подбор оптимального решения, техническое обоснование при выборе компонента;
- Подбор аналогов;
- Консультации по применению компонента;
- Поставка образцов и прототипов;
- Техническая поддержка проекта;
- Защита от снятия компонента с производства.



#### Как с нами связаться

**Телефон:** 8 (812) 309 58 32 (многоканальный)

**Факс:** 8 (812) 320-02-42

**Электронная почта:** [org@eplast1.ru](mailto:org@eplast1.ru)

**Адрес:** 198099, г. Санкт-Петербург, ул. Калинина, дом 2, корпус 4, литера А.