

# Gigabit USB 3.0 Device Server

## High Throughput and Enterprise Security

### DS-600



Use USB Devices over the Network in a Secure Enterprise Business Environment

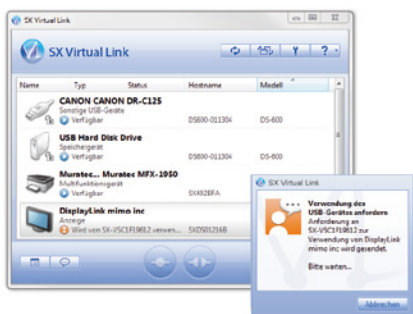
More and more USB devices such as scanners, multi-function printers (MFPs), hard disk drives, and cameras have been used in offices. The USB Device Server allows you to use these devices on a network, improving installation flexibility without troublesome USB cables. This also reduces installation costs by enabling USB devices to be easily shared in the office in a cost optimized manner.

#### What is a USB Device Server?

Using Silex Technology's USB Virtual Link (UVL) Technology, it enables USB devices on the network be available as if they are connected to a PC USB cable, allowing you to use not only the USB device drivers, but all application software as-is.

#### SX Virtual Link

SX Virtual Link (SVL) is application software for USB Virtual Link (UVL) Technology. Any networked USB devices connected to a USB Device Server can be remotely connected to a PC through USB by using SVL.

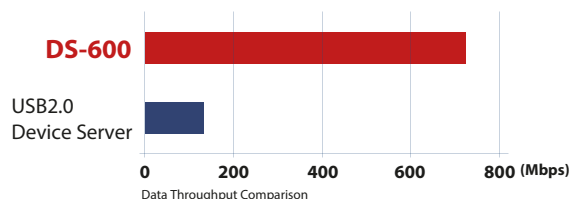


- You can remotely operate USB devices (connect, disconnect, etc.)
- You can send a disconnect request when the shared USB device is in use.

#### Features

##### High-speed support

USB3.0 SUPERSPEED is supported. DS-600 can transmit data faster than the preceding model. Even devices that handle large data such as scanners can transmit data quickly with USB3.0 and the DS-600, allowing you to improve work efficiency.



##### Robust Security

Enterprise network security requirements have increased in recent years. A number of new authentication methods are supported to prevent illegal access/intrusion to the internal network and for increased data secrecy and route encryption requirements.

DS-600 supports the following three enterprise network security features.

##### IEEE 802.1X authentication

DS-600 supports IEEE 802.1X authentication, and it can be used for a network environment, which requires enterprise authentication. Supported authentication: EAP-TLS, PEAP (PEAPv0), EAP-TTLS

##### Data encryption (AES256bit)

Data encryption is supported over network routes. It processes network transfer safely for data requiring high security.

##### USB connect password function

Password configuration is available for each USB port. DS-600 manages users, who can connect to a specific USB device.

##### Specialized features for USB devices

##### Isochronous Transfer mode

USB devices such as Webcams or USB speakers, which require consecutive and real-time data transmission, can also be used in a network environment. DS-600 supports both Full Speed and High Speed.

##### Standard TCP/IP printing (LPR/RAW)

DS-600 supports generally-used network printing protocols: "Raw mode printing" and "LPR printing". DS-600 can be available as a print server when it is connected to a printer.

##### NAS (Network Attached Storage) functions

Storages such as USB hard disk drives can be used as NAS. When storages with specific formats are simply connected to DS-600, they will be available as NAS in the network. Supported formats: FAT12, FAT16, FAT32

##### Simple configuration

Silex free software "Device Server Setup" (available at Silex web site) gives easy-setup. Users just need to answer questions on the screen and the configuration will be easily done.

##### ECO mode

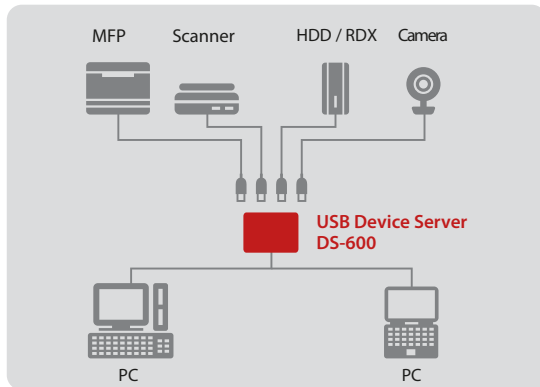
When DS-600 is not used for a certain period of time, the USB bus power feeding is turned off to save energy. It increases power-saving efficiency. The USB bus power feeding automatically restarts upon use.

##### USB-Hubs

DS-600 is compatible with USB-Hubs, allowing to increase the number of connectable USB devices.

## Assumed applicable devices for DS-600

- Document Scanner
- Printer, MFP, Copier
- USB Industrial Cameras
- Hard Disk / RDX-Drives
- USB-Sticks



If you are interested in a customized OEM version of this product, please contact the Silex Sales Team.

**SX UVL Client SDK for Win32**

**SX UVL Client SDK for iOS**

**SX UVL Client SDK for Android**

The Windows version (SX UVL Client SDK for Win32) is available at the Silex web site for free. Please contact our sales staff for others.

## Other USB Device Servers

**Basic model:  
USB 2.0 Device Server  
DS-510**



- 10BASE-T, 100BASE-TX, 1000BASE-T (Auto-recognition)
- USB2.0 (Type-A) x 2 ports
- Supports Isochronous transfer (High Speed, Full Speed)

## Specifications

Part number:	DS-600
Network interface:	10BASE-T/100BASE-TX/1000BASE-T (Auto-recognition)
Wireless LAN	N/A
Device interface:	USB3.0 SuperSpeed (Typ A) x 1 port *1 USB2.0 Hi-Speed (Typ A) x 1 port
Supported OS:	Windows 10 (32/64bit), Windows 8/8.1 (32/64bit), Windows 7 (32/64bit), Windows Server 2012R2, Windows Server 2012, Windows Server 2008R2, Windows Server 2008 (32/64bit)
Supported protocol:	TCP/IP
Configuration method:	Device Server Setup, Web-Browser
Dimension:	W:130mm x D:100mm x H:26.2mm
Weight:	145g (without accessories)
Storage temperature: Storage humidity:	-10 to 50°C 20 to 95% RH (without condensation)
Operating temperature Operating humidity :	0 to 40°C 20 to 95%RH (without condensation)
Max power consumption:	4.8W (DC12V 0.4A) without USB bus power *2
Regulatory compliance:	VCCI Class B / FCC Class B / CE Class B, Rohs Directives
Supported utility:	SX Virtual Link Ver4.0.0 or later, ThinClient USB Link Controller Ver1.6.0 or later
Enclosed accessories:	Main unit, AC adapter, Set-up guide, GPL inquiry sheet, Warranty

\*1 Supply currents of bus power are 900mA for USB3.0 and 500mA for USB2.0.

\*2 To operate a USB device that comes with an AC adapter, it is recommended to use the enclosed AC adapter for stable performance

## USB Device Server Function Comparison

Device name	DS-600	DS-510
Device server function	USB3.0/USB2.0	USB2.0
Isochronous transfer	Supported (Full-Speed / Hi-Speed)	Supported (Full-Speed / Hi-Speed)
Printer auto connection function	Supported	Supported
IEEE 802.1X	Supported (EAP-TLS, PEAP(PEAPv0), EAP-TTLS)	Not supported
NAS function	Supported (FAT12, FAT16, FAT32)	Not supported
Data encryption	Supported (AES-256)	Not supported
USB connect password	Supported	Not supported
Print server function	Supported	Supported
ECO mode function	Supported	Supported

silex technology is a registered trademark of silex technology, Inc. Other product or brand names may be registered trademarks or trademarks of their respective owners. Technical information and specifications are subject to change without notice. © 2016 silex technology, Inc. All rights reserved.

## silex global sales & support locations



**USA Office**  
silex technology america, Inc.  
+1-801-747-0656  
U.S. toll free 866-765-8761  
www.silexamerica.com  
sales@silexamerica.com

**Europe**  
silex technology europe, GmbH  
+49-2151-65009-10  
Germany toll free 0800-7453938  
www.silexeurope.com  
contact@silexeurope.com

**Corporate Headquarters**  
silex technology, Inc.  
+81-774-98-3781  
www.silex.jp  
support@silex.jp



JQA-QMA2667  
silex technology, Inc.



JQA-EM3813  
silex technology, Inc.  
Design & Manufacturing Center

PN: 141-20140-100  
REV A. 20160621



Компания «ЭлектроПласт» предлагает заключение долгосрочных отношений при поставках импортных электронных компонентов на взаимовыгодных условиях!

Наши преимущества:

- Оперативные поставки широкого спектра электронных компонентов отечественного и импортного производства напрямую от производителей и с крупнейших мировых складов;
- Поставка более 17-ти миллионов наименований электронных компонентов;
- Поставка сложных, дефицитных, либо снятых с производства позиций;
- Оперативные сроки поставки под заказ (от 5 рабочих дней);
- Экспресс доставка в любую точку России;
- Техническая поддержка проекта, помощь в подборе аналогов, поставка прототипов;
- Система менеджмента качества сертифицирована по Международному стандарту ISO 9001;
- Лицензия ФСБ на осуществление работ с использованием сведений, составляющих государственную тайну;
- Поставка специализированных компонентов (Xilinx, Altera, Analog Devices, Intersil, Interpoint, Microsemi, Aeroflex, Peregrine, Syfer, Eurofarad, Texas Instrument, Miteq, Cobham, E2V, MA-COM, Hittite, Mini-Circuits, General Dynamics и др.);

Помимо этого, одним из направлений компании «ЭлектроПласт» является направление «Источники питания». Мы предлагаем Вам помощь Конструкторского отдела:

- Подбор оптимального решения, техническое обоснование при выборе компонента;
- Подбор аналогов;
- Консультации по применению компонента;
- Поставка образцов и прототипов;
- Техническая поддержка проекта;
- Защита от снятия компонента с производства.



#### Как с нами связаться

**Телефон:** 8 (812) 309 58 32 (многоканальный)

**Факс:** 8 (812) 320-02-42

**Электронная почта:** [org@eplast1.ru](mailto:org@eplast1.ru)

**Адрес:** 198099, г. Санкт-Петербург, ул. Калинина, дом 2, корпус 4, литера А.