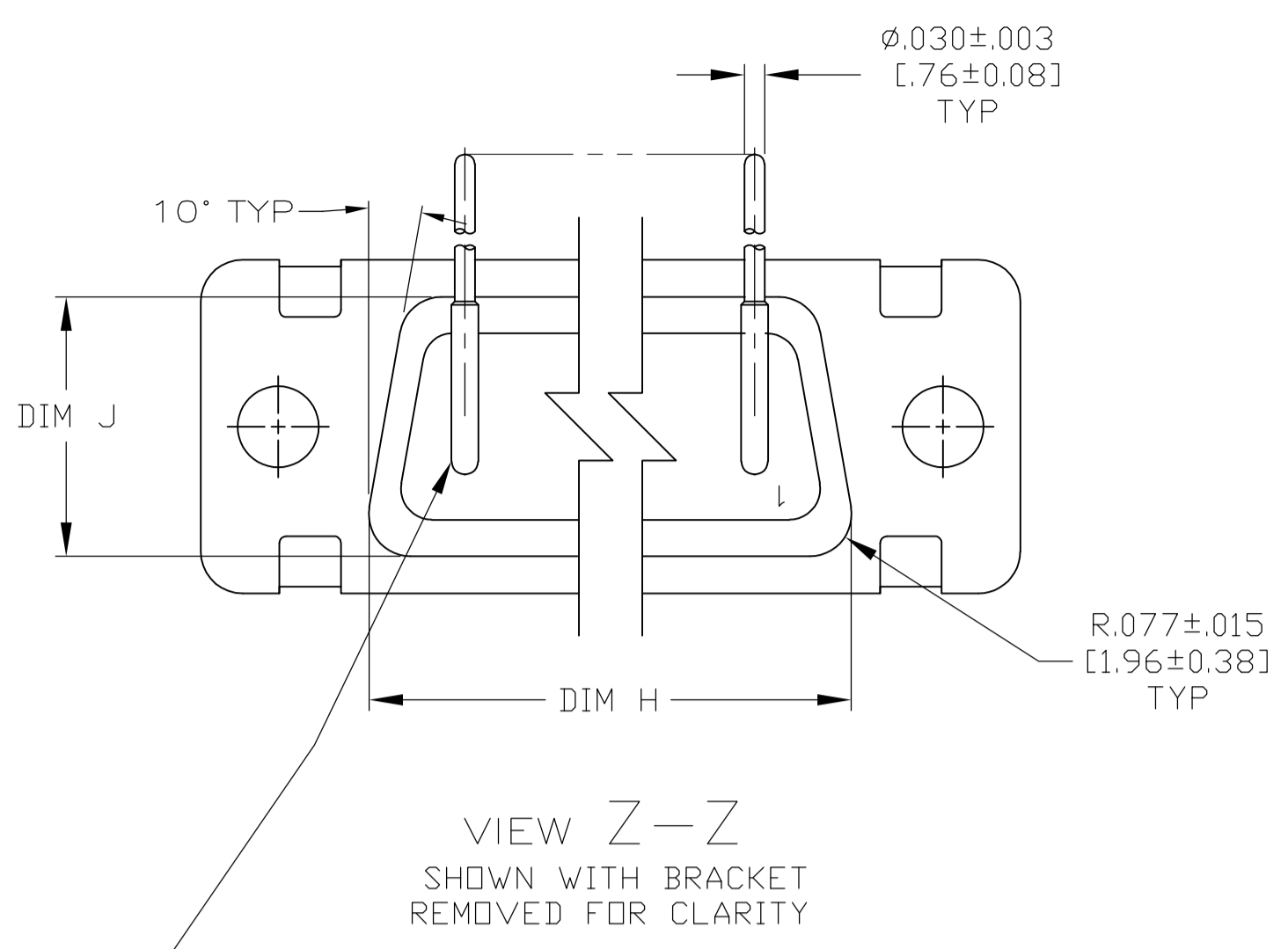
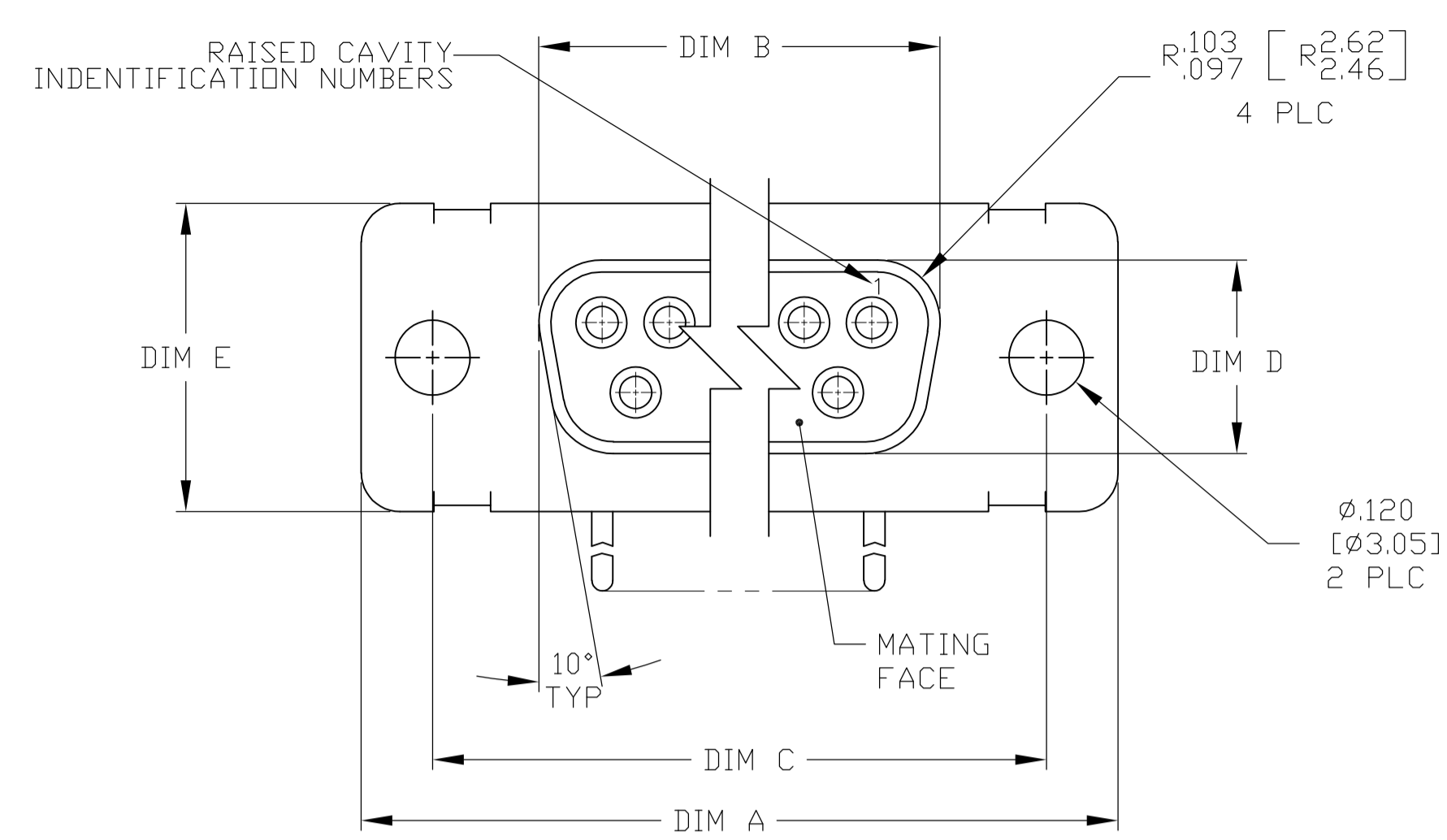
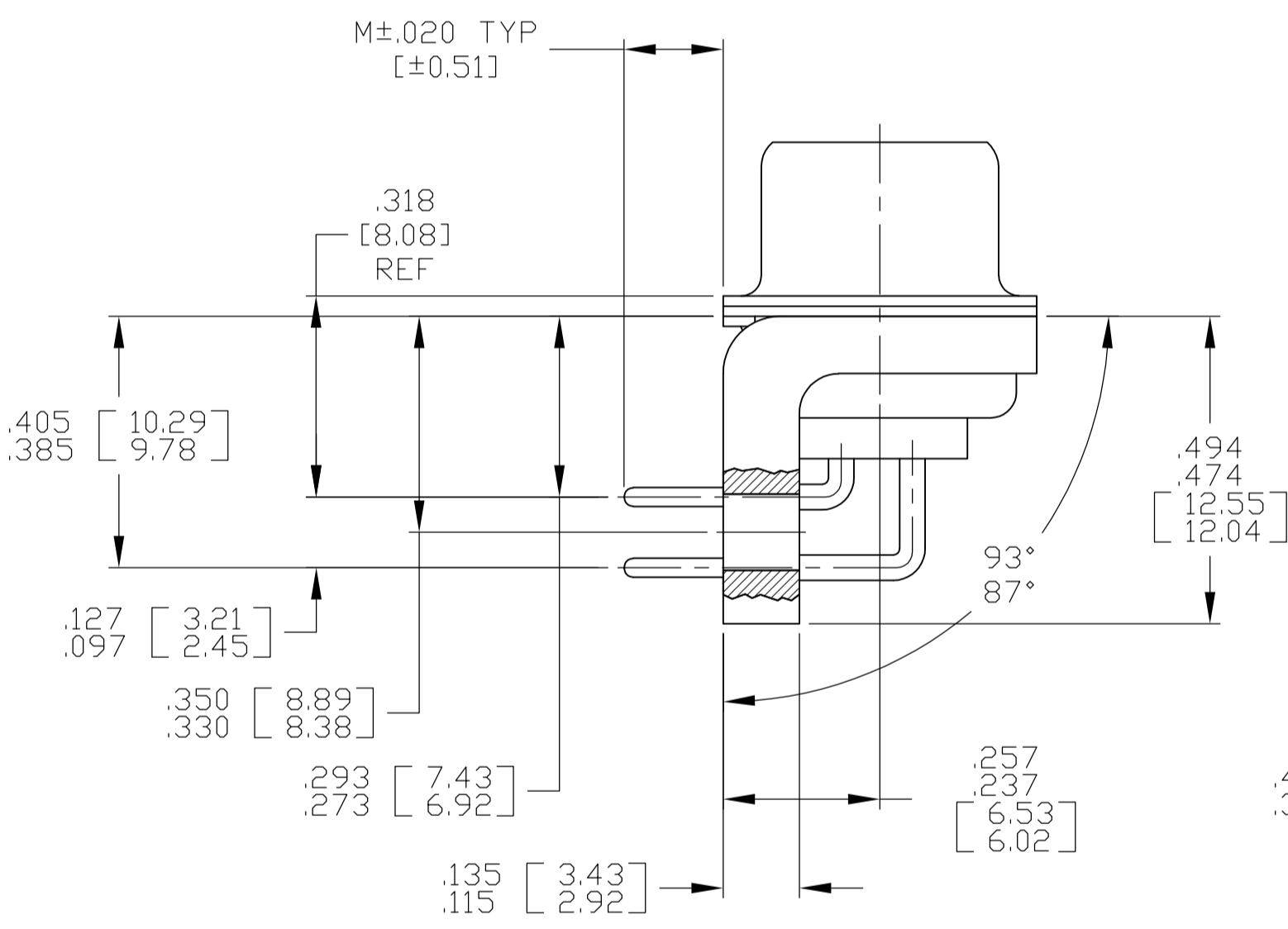
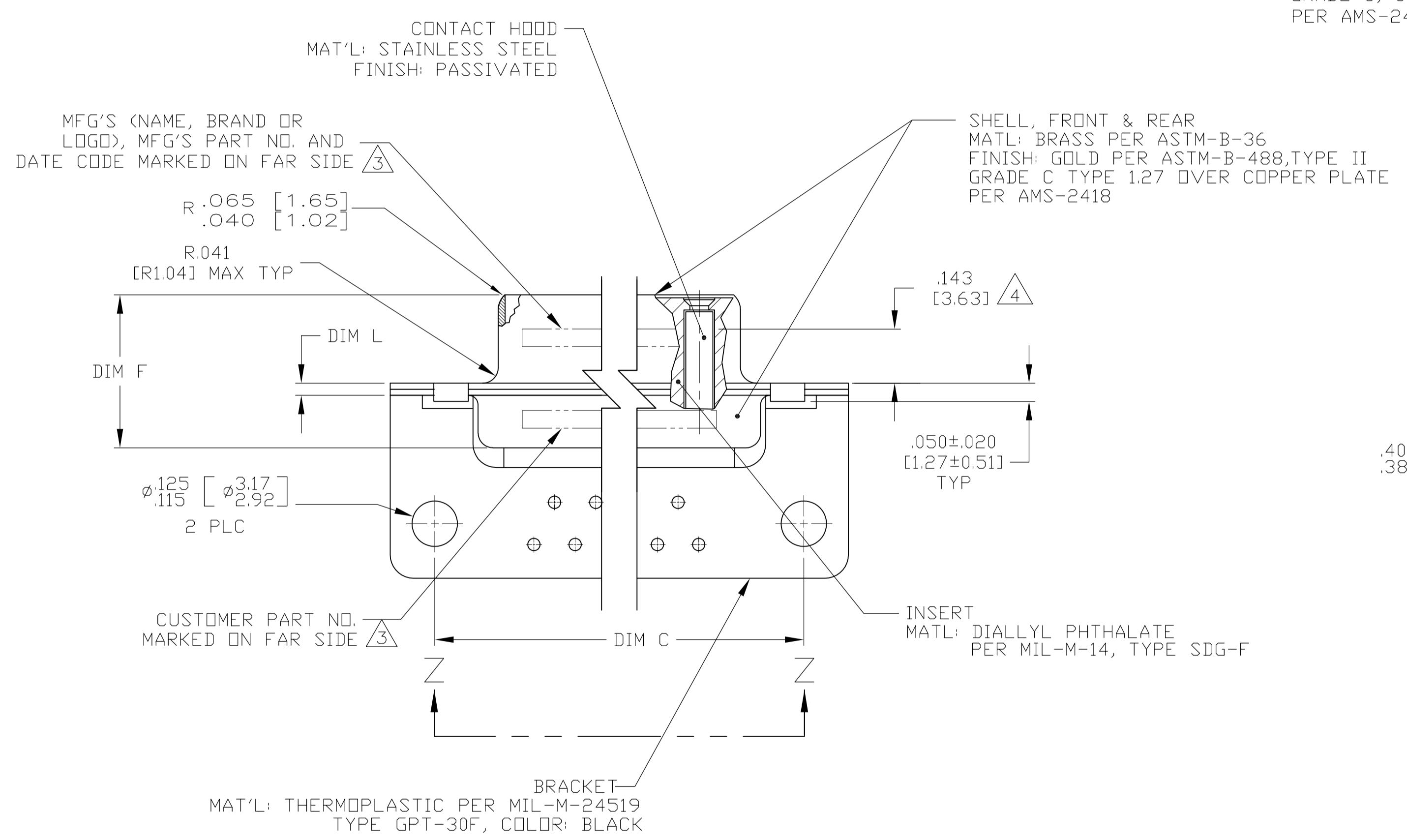


REVISES		DATE	BY	APPV
NO	DESCRIPTION			
E	REV PER ECO 13-013416	9-19-13	CT	CD

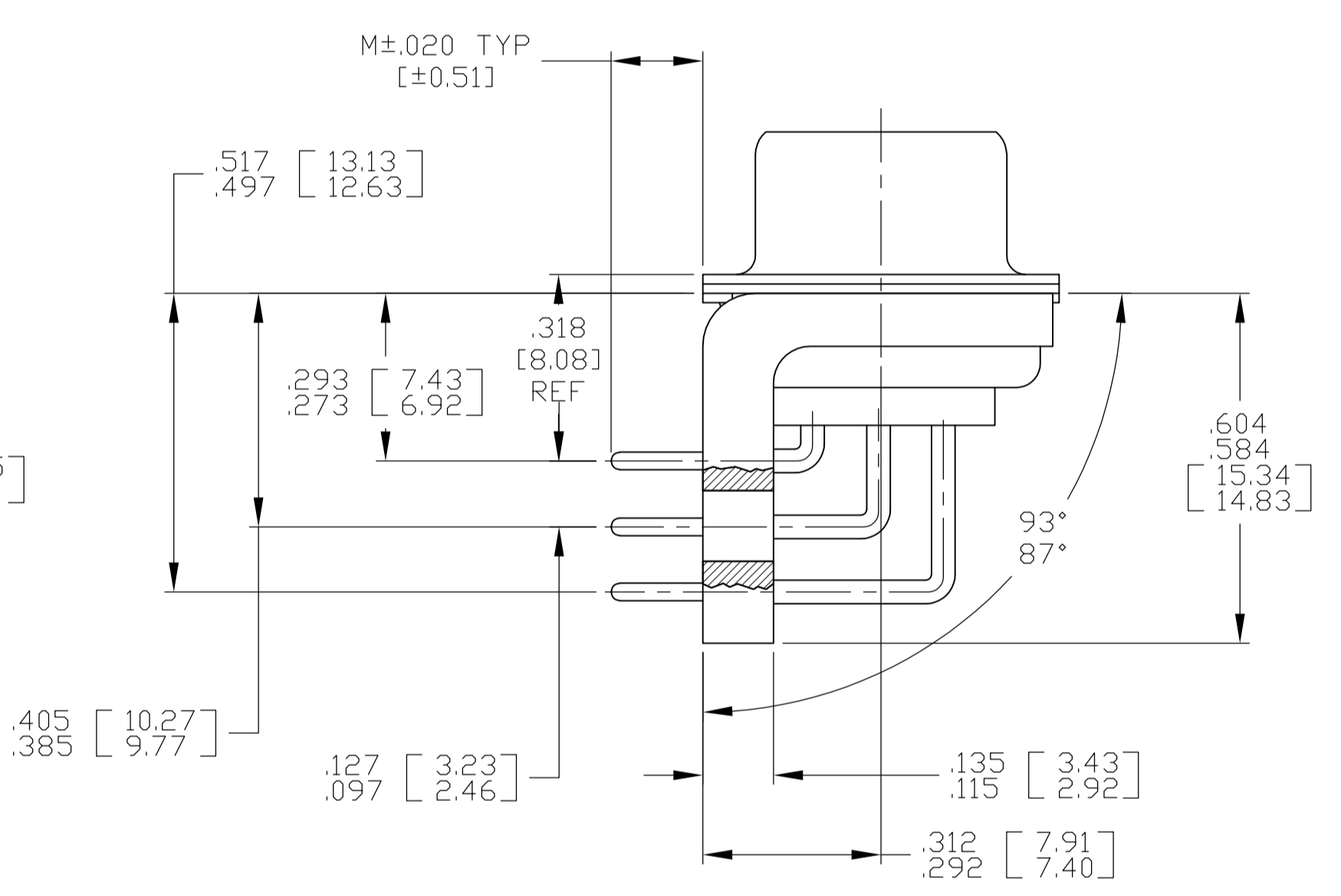


VIEW Z-Z
SHOWN WITH BRACKET REMOVED FOR CLARITY
CONTACT (QTY = NO. OF POSN)
MATL: COPPER ALLOY
FINISH: GOLD PER ASTM-B-488, TYPE II, GRADE C, CLASS 1:27 OVER COPPER PLATE PER AMS-2410

1. SEE SHEET 2 FOR RECOMMENDED P.C. BOARD LAYOUT. TRUE POSITION TOLERANCE FOR P.C. BOARD LAYOUT IS .010 [0.25] AT MAX MATERIAL CONDITION. SUGGESTED BOARD THICKNESS IS .062 [1.57].
2. THE CONNECTORS DESCRIBED IN THIS DOCUMENT MEET THE REQUIREMENTS OF MIL-C-24308 AND MATE WITH ANY RECEPTACLE CONNECTOR WITH SAME INSERT ARRANGEMENT.
3. MARKED .047-.062 HIGH CHARACTERS. FAR SIDE REFERS TO THE WIDE SIDE OF THE KEYSTONE. NEAR SIDE REFERS TO THE NARROW SIDE OF THE KEYSTONE. IF THE REAR SHELL IS TOO SMALL FOR THE ENTIRE CUSTOMER PART NUMBER, MARKING SHALL BE LOCATED AS FOLLOWS:
 - A. "B010811" ON FRONT SHELL, FAR SIDE.
 - B. REST OF NUMBER ON REAR SHELL, FAR SIDE.
 - C. "MFG'S" (NAME, BRAND OR LOGO), AND DATE CODE ON FRONT SHELL, NEAR SIDE.
 - D. MFG'S PART NUMBER ON REAR SHELL, NEAR SIDE.
4. POINT OF ELECTRICAL ENGAGEMENT AS MEASURED WITH A .039-.0393 DIAMETER SQUARE ENDED TEST PIN.



SHELL SIZE 1 THRU 4 CONTACT CONFIGURATION



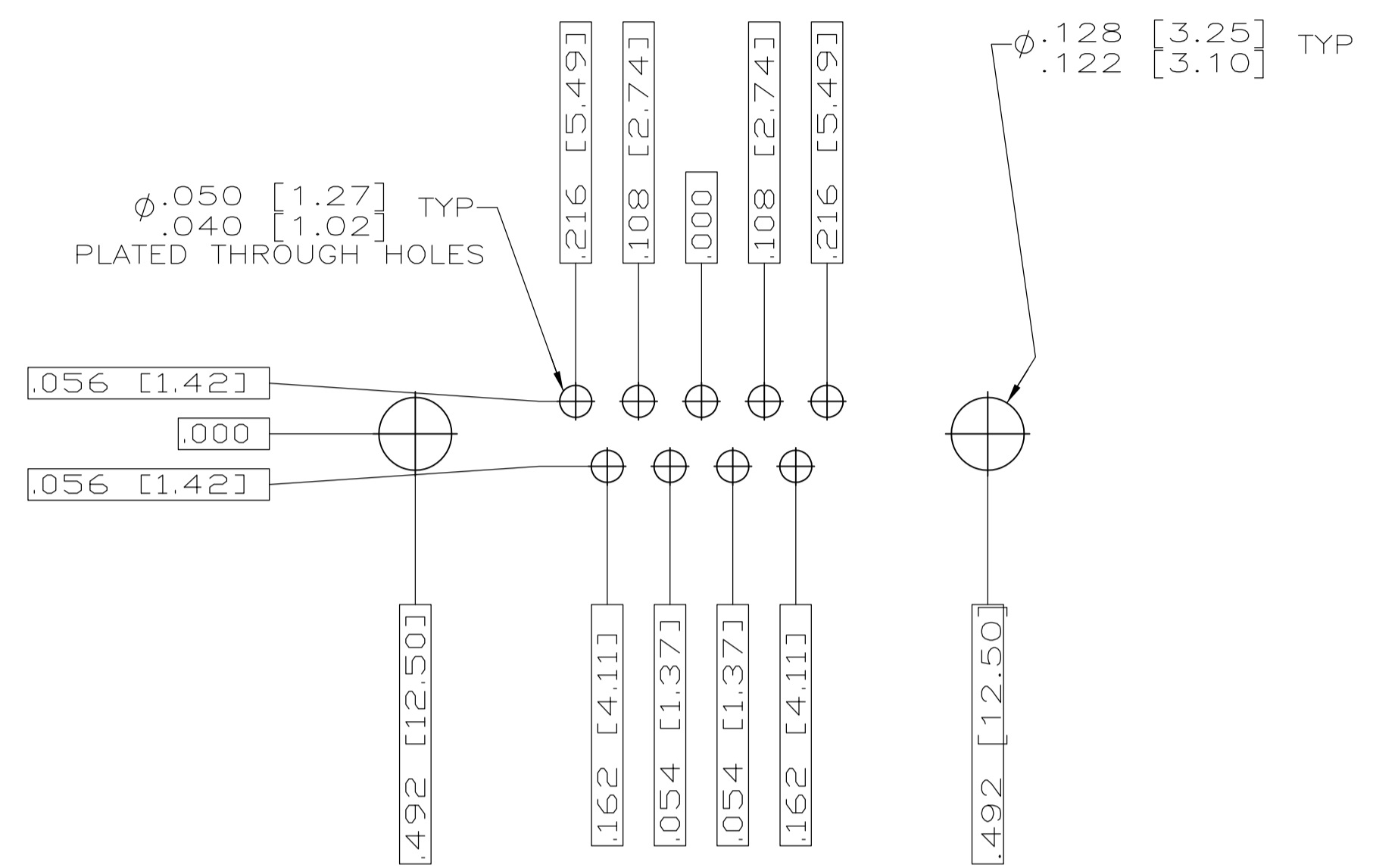
SHELL SIZE 5 CONTACT CONFIGURATION

.188 [4.77]	.040 [1.02] .020 [0.51]	.544 [13.82] .524 [13.31]	2.188 [55.58] 2.168 [55.07]	.439 [11.15] .419 [10.64]	.620 [15.75] .590 [14.99]	.428 [10.87] .418 [10.62]	2.411 [61.24] 2.401 [60.99]	2.069 [52.55] 2.059 [52.30]	2.650 [67.31] 2.620 [66.55]	50	5	B010811-0030	1-1883271-5	1-1883271-5
.156 [3.96]	.040 [1.02] .020 [0.51]	.544 [13.82] .524 [13.31]	2.188 [55.58] 2.168 [55.07]	.439 [11.15] .419 [10.64]	.620 [15.75] .590 [14.99]	.428 [10.87] .418 [10.62]	2.411 [61.24] 2.401 [60.99]	2.069 [52.55] 2.059 [52.30]	2.650 [67.31] 2.620 [66.55]	50	5	B010811-0028	1-1883271-0	1-1883271-0
.125 [3.17]	.049 [1.24] .029 [0.74]	.432 [10.97] .412 [10.46]	1.635 [41.53] 1.615 [41.02]	.439 [11.15] .419 [10.64]	.509 [12.93] .479 [12.17]	.316 [8.03] .306 [7.77]	1.857 [47.17] 1.847 [46.91]	1.516 [38.51] 1.506 [38.25]	2.103 [53.42] 2.073 [52.65]	25	3	B010811-0014	1883271-3	1883271-3
.125 [3.17]	.040 [1.02] .020 [0.51]	.432 [10.97] .412 [10.46]	.769 [19.53] .749 [19.02]	.439 [11.15] .419 [10.64]	.509 [12.93] .479 [12.17]	.316 [8.03] .306 [7.77]	.989 [25.12] .979 [24.87]	.648 [16.46] .638 [16.21]	1.228 [31.19] 1.198 [30.43]	9	1	B010811-0002	1883271-1	1883271-1
M	L	J	H	F	E	D	C	B	A	NO OF POS	SHELL SIZE	CUSTOMER P/N ON CONNECTOR	MFG'S P/N ON CONNECTOR	PART NUMBER

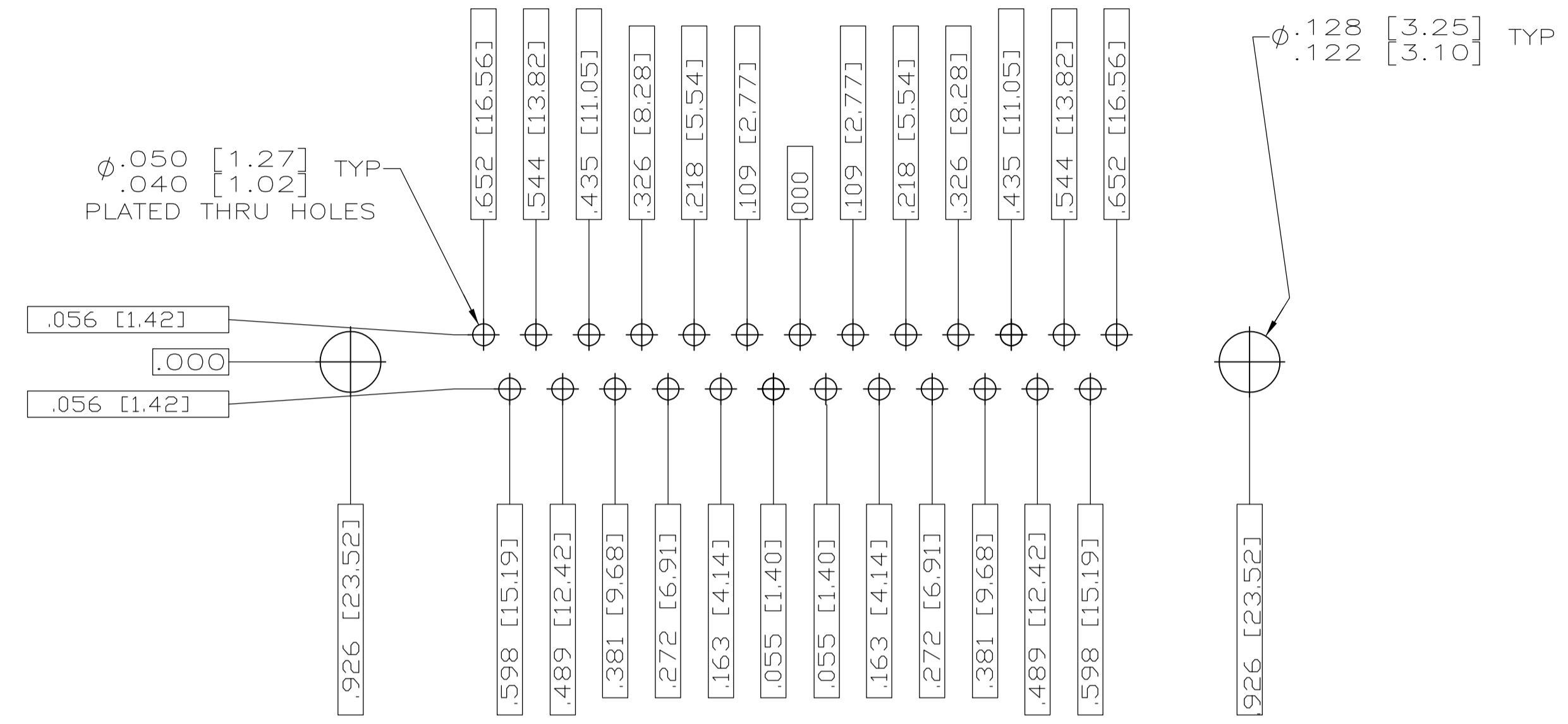
THIS DRAWING IS A CONTROLLED DOCUMENT.

DIMENSIONS: INCHES [mm]	TOLERANCES UNLESS OTHERWISE SPECIFIED:	DIN C.C. THOMAS 3-1-06	DRW D.MILLER 3-1-06
0 PLC ± .005	1 PLC ± .005	APPRO D.MILLER 3-1-06	NAME
2 PLC ± .005	3 PLC ± .005 [0.13]	PRODUCT SPEC	RECEPTACLE ASSEMBLY, AMPLITE, RT ANGLE, SERIES 109, SIZE 1 AND 5
4 PLC ± .005	ANGLES ± 1°	APPLICATION SPEC	SIZE CASE CODE DRAWING NO
MATERIAL SEE CALLOUTS	FINISH SEE CALLOUTS	WEIGHT	A1 00779 1883271
CUSTOMER DRAWING		SCALE 4:1	SHEET 1 OF 2 REV E

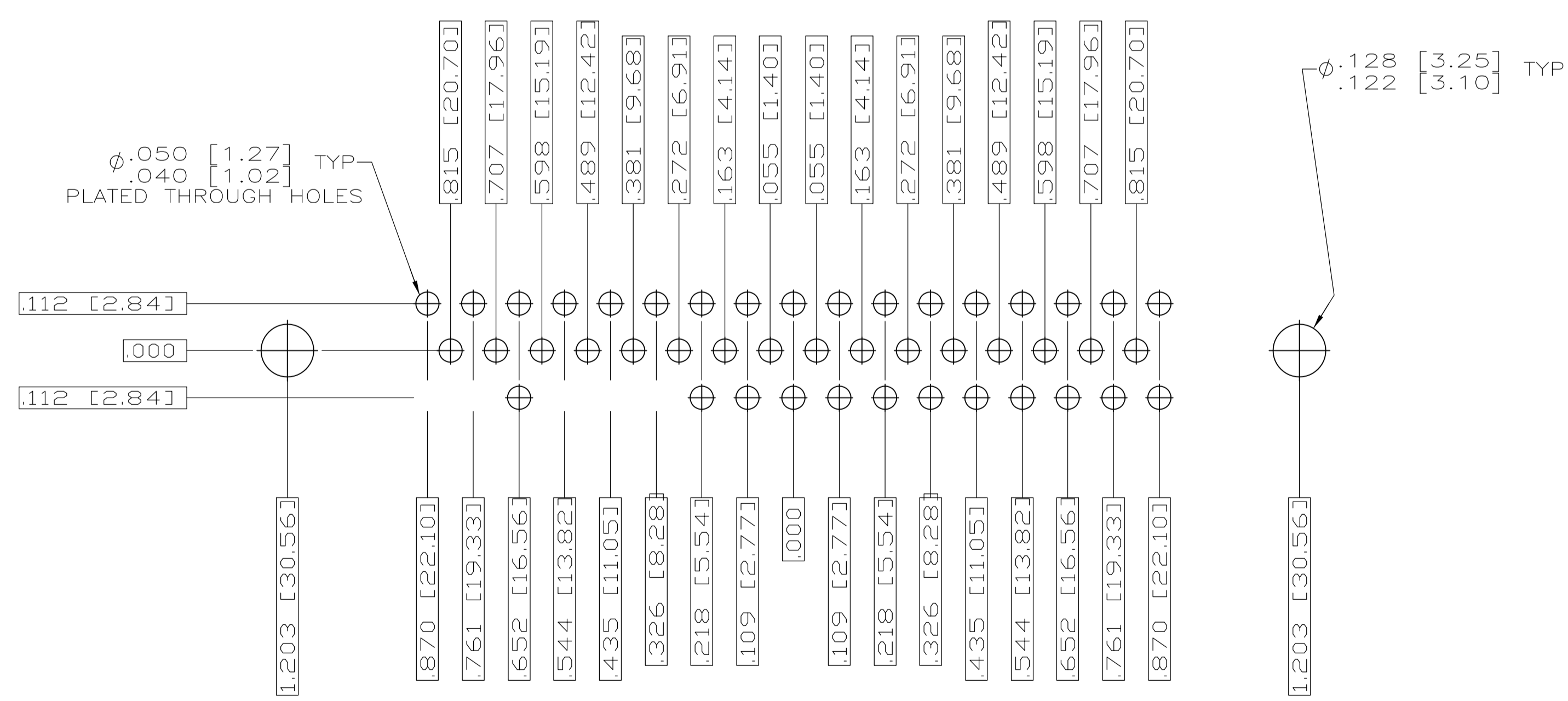
LOC		DIST		REVISIONS			
P	LYR	DESCRIPTION	DATE	DNW	APVD		
-	-	SEE SHEET #1	-	-	-	-	-
D		REV PER ECO-08-018752	8-21-08	PK	BW		



RECOMMENDED P.C. BOARD LAYOUT
SHELL SIZE 1 (9 POSITION)



RECOMMENDED P.C. BOARD LAYOUT
SHELL SIZE 3 (25 POSITION) Δ



RECOMMENDED P.C. BOARD LAYOUT
SHELL SIZE 5 (50 POSITION)

THIS DRAWING IS A CONTROLLED DOCUMENT.		DIN C.C.THOMAS 3-1-06	TE Connectivity
DIMENSIONS: INCHES [mm]		CHK D.MILLER 3-1-06	
TOLERANCES UNLESS OTHERWISE SPECIFIED:		APVD D.MILLER 3-1-06	NAME
0 PL ± -		PRODUCT SPEC	RECEPTACLE ASSEMBLY,AMPLITE,RT ANGLE, SERIES 109,SIZE 1 AND 5
1 PL ± -		APPLICATION SPEC	
2 PL ± -		WEIGHT	
3 PL ± .005 [0.13]		SIZE	A1
4 PL ± .005 [0.13]		SCALE	4:1
ANGLES ± 1°		SHEET	2 OF 2
MATERIAL SEE CALLOUTS	FINISH SEE CALLOUTS	DRAWING NO	REV
		00779	
		1883271	
		CUSTOMER DRAWING	



Компания «ЭлектроПласт» предлагает заключение долгосрочных отношений при поставках импортных электронных компонентов на взаимовыгодных условиях!

Наши преимущества:

- Оперативные поставки широкого спектра электронных компонентов отечественного и импортного производства напрямую от производителей и с крупнейших мировых складов;
- Поставка более 17-ти миллионов наименований электронных компонентов;
- Поставка сложных, дефицитных, либо снятых с производства позиций;
- Оперативные сроки поставки под заказ (от 5 рабочих дней);
- Экспресс доставка в любую точку России;
- Техническая поддержка проекта, помощь в подборе аналогов, поставка прототипов;
- Система менеджмента качества сертифицирована по Международному стандарту ISO 9001;
- Лицензия ФСБ на осуществление работ с использованием сведений, составляющих государственную тайну;
- Поставка специализированных компонентов (Xilinx, Altera, Analog Devices, Intersil, Interpoint, Microsemi, Aeroflex, Peregrine, Syfer, Eurofarad, Texas Instrument, Miteq, Cobham, E2V, MA-COM, Hittite, Mini-Circuits, General Dynamics и др.);

Помимо этого, одним из направлений компании «ЭлектроПласт» является направление «Источники питания». Мы предлагаем Вам помощь Конструкторского отдела:

- Подбор оптимального решения, техническое обоснование при выборе компонента;
- Подбор аналогов;
- Консультации по применению компонента;
- Поставка образцов и прототипов;
- Техническая поддержка проекта;
- Защита от снятия компонента с производства.



Как с нами связаться

Телефон: 8 (812) 309 58 32 (многоканальный)

Факс: 8 (812) 320-02-42

Электронная почта: org@eplast1.ru

Адрес: 198099, г. Санкт-Петербург, ул. Калинина, дом 2, корпус 4, литера А.