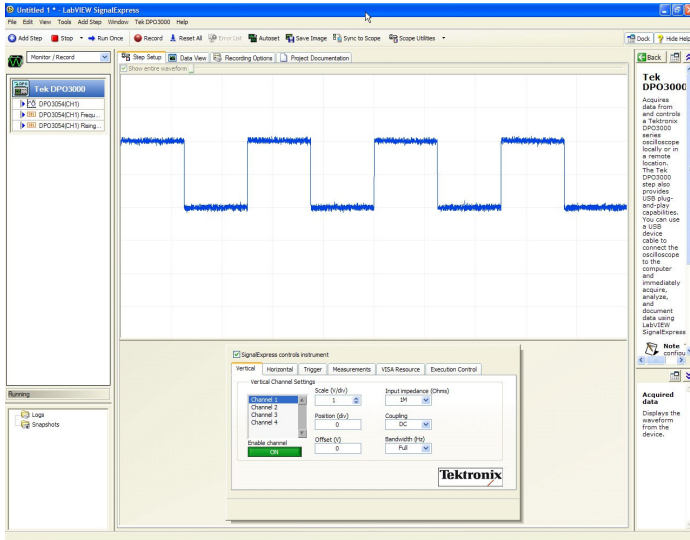


Tektronix Edition of NI LabVIEW SignalExpress™

SIGEXPTE Data Sheet



Features & Benefits

- Provides Instrument Control for the DPO/DSA70000, MSO70000, DPO7000, MSO/DPO4000, MSO/DPO3000, MSO/DPO2000, TDS3000, TDS2000, TPS2000, and TDS1000 Series Oscilloscopes, AFG3000 Series Arbitrary/Function Generators, DMM4000 Series Multimeters, PWS4000 Series Power Supplies, and FCA/MCA3000 Series Timer/Counters
- Quickly Start Measuring with an Intuitive Drag-and-Drop Interface that Does Not Require Any Programming
- Measurement Trending
- Data Logging
- Advanced Analysis and Documentation Capabilities
- Quickly and Easily Import Simulated Results and Compare Against Actual Measured Results Live on the Screen
- Automatic Frequency Sweeping
- Limit Testing
- Connect and Control Multiple Instruments from within One Software Environment



Industry's first true USB plug-and-play connectivity for oscilloscopes and bench instruments.

Increase Your Productivity with the Industry's Most Seamless Instrument-to-PC Connectivity Solution

Configuring test instruments to connect with PC-based software is often a difficult and frustrating challenge. That's why Tektronix and National Instruments have partnered together to create the Tektronix Edition of National Instruments LabVIEW SignalExpress™ – interactive measurement and analysis software designed for design and test engineers who need to quickly acquire, analyze, and document measurements without the added complication of programming.

USB Plug-and-Play

With USB plug-and-play support, NI LabVIEW SignalExpress TE immediately detects and configures Tektronix instruments when connected to a PC*1, providing a live view of the data acquisition and immediate control of the instrument.

Import and Compare

Integrate measurements with simulated results from popular design software tools such as PSpice, SPICE, and Multisim. This enables quick and easy importing and comparing of simulated results – saving time and improving design accuracy.

Capture and Document

Quickly capture and document measurements by simply dragging and dropping acquired data and waveform captures directly into Microsoft Excel, Word, Outlook, PowerPoint, and WordPad. Or annotate waveforms and measurements in the interactive project documentation tool.

Advanced Analysis

NI LabVIEW SignalExpress TE contains more than 200 different measurement, processing, analysis, and reporting capabilities that can be applied to data being acquired from Tektronix instruments.

Measurement Trending – Automated measurements from the oscilloscope or multimeter are graphed over time to provide a simple indication of trends in the measurement parameters.

Data Logging – Waveform data and measurements can be automatically logged to the PC's disk drive for unattended and long-term monitoring applications.

Automated Measurements

Take advantage of several major time-saving features, including automated measurement sweeping and limit testing. These features provide relief from a traditionally manual and time-intensive process.

Connect and Control

Remove the guesswork when connecting the test instrument to a PC by connecting and controlling multiple instruments from one software environment, all within a single drag-and-drop user interface.

SIGEXPTE

The LE version of NI LabVIEW SignalExpress TE comes standard with the MSO/DPO4000B, MSO/DPO3000, MSO/DPO2000, TDS3000C, TDS2000C, TPS2000B, and TDS1000B Series oscilloscopes, the DMM4000 Series multimeters, AFG3000 Series arbitrary/function generators, PWS4000 Series power supplies, and FCA/MCA Series timer/counters. SIGEXPTE adds extended analysis capabilities.

*1 Compatible with the DPO/DSA70000, MSO70000, DPO7000, MSO/DPO4000/B, MSO/DPO3000, MSO/DPO2000, TDS2000B/C, and TDS1000B Series oscilloscopes, the AFG3000 Series arbitrary/function generators, PWS4000 Series power supplies, and FCA/MCA Series counter/timers. Requires Microsoft Windows XP/2K or newer operating system.

NI LabVIEW SignalExpress TE Features – LE Version and SIGEXPTE Version

| Features | LE Version | SIGEXPTE Version |
|---|------------|---|
| Instrument Control* ² (Horz Vert Trig Pos) | X | X |
| Customizable Graphs and Interactive Cursors | X | X |
| Tektronix Instrument Support through USB | | MSO/DPO4000/B MSO/DPO3000 MSO/DPO2000 TDS2000B/C TPS2000B (with RS-232 to USB adapter cable) TDS1000B AFG3000 DMM4000 PWS4000 FCA3000 MCA3000 |
| Tektronix Instrument Support through Ethernet | | DPO70000 DSA70000 MSO70000 DPO7000/C MSO/DPO4000/B MSO/DPO3000 MSO/DPO2000 TDS3000B/C AFG3000 |
| Tektronix Instrument Support through GPIB | | DMM4050, DMM4040 FCA/MCA3000 Series TDS3000B/C Series with TDS3GV module TDS2000/1000 Series with TDS2CMA module DPO70000, DSA70000, MSO70000, DPO7000/C, MSO/DPO4000/B, MSO/DPO3000, MSO/DPO2000, TDS2000B/C, TDS1000B, PWS4000, and AFG3000 Series with TEK-USB-488 adapter |
| Generic IVI Support for Hundreds of Common Benchtop Instruments | X | X |
| pSpice, SPICE File Conversion from EDA Tools | — | X |
| Save Signals to File | X | X |
| Basic Logging to Disk | X | X |
| Advanced Data Logging (including alarms and events) | — | X |

| Features | LE Version | SIGEXPTE Version |
|--|------------|---|
| Drag and Drop Data into Microsoft Excel and Word | X | X |
| Interactive Reporting | — | X |
| Measurement Trending | X | X |
| Advanced Analysis | — | Amplitude and Level Timing and Transition Histograms Power Spectrum Frequency Response Distortion Tone Extraction |
| Signal Processing | — | Software Filtering Scalar/Waveform Math Analog/Digital Conversion Windowing Scaling and Conversion |
| Automated Sweeping and Limit Testing | — | X |
| NI LabVIEW Integration | — | X |

*² Controls only analog channels on MSO4000, MSO3000, MSO2000.

Characteristics

System Requirements

| Characteristic | Minimum | Recommended |
|------------------|---|-------------------------|
| Operating System | Windows XP/2000 | Windows XP/2000/Vista |
| RAM | 512 MB | >512 MB |
| Processor | Pentium III or later or Celeron 600 MHz or equivalent | Pentium 4 or equivalent |

Ordering Information

SIGEXPTE

National Instruments LabVIEW SignalExpress Tektronix Edition Software.



Tektronix is registered to ISO 9001 and ISO 14001 by SRI Quality System Registrar.



Product(s) complies with IEEE Standard 488.1-1987, RS-232-C, and with Tektronix Standard Codes and Formats.

Contact Tektronix:

ASEAN / Australasia (65) 6356 3900
Austria 00800 2255 4835*
Balkans, Israel, South Africa and other ISE Countries +41 52 675 3777
Belgium 00800 2255 4835*
Brazil +55 (11) 3759 7627
Canada 1 800 833 9200
Central East Europe and the Baltics +41 52 675 3777
Central Europe & Greece +41 52 675 3777
Denmark +45 80 88 1401
Finland +41 52 675 3777
France 00800 2255 4835*
Germany 00800 2255 4835*
Hong Kong 400 820 5835
India 000 800 650 1835
Italy 00800 2255 4835*
Japan 81 (3) 6714 3010
Luxembourg +41 52 675 3777
Mexico, Central/South America & Caribbean 52 (55) 56 04 50 90
Middle East, Asia, and North Africa +41 52 675 3777
The Netherlands 00800 2255 4835*
Norway 800 16098
People's Republic of China 400 820 5835
Poland +41 52 675 3777
Portugal 80 08 12370
Republic of Korea 001 800 8255 2835
Russia & CIS +7 (495) 7484900
South Africa +41 52 675 3777
Spain 00800 2255 4835*
Sweden 00800 2255 4835*
Switzerland 00800 2255 4835*
Taiwan 886 (2) 2722 9622
United Kingdom & Ireland 00800 2255 4835*
USA 1 800 833 9200

* European toll-free number. If not accessible, call: +41 52 675 3777

Updated 10 February 2011

For Further Information. Tektronix maintains a comprehensive, constantly expanding collection of application notes, technical briefs and other resources to help engineers working on the cutting edge of technology. Please visit www.tektronix.com



Copyright © Tektronix, Inc. All rights reserved. Tektronix products are covered by U.S. and foreign patents, issued and pending. Information in this publication supersedes that in all previously published material. Specification and price change privileges reserved. TEKTRONIX and TEK are registered trademarks of Tektronix, Inc. All other trade names referenced are the service marks, trademarks, or registered trademarks of their respective companies.

02 Oct 2011

61W-19402-11





Компания «ЭлектроПласт» предлагает заключение долгосрочных отношений при поставках импортных электронных компонентов на взаимовыгодных условиях!

Наши преимущества:

- Оперативные поставки широкого спектра электронных компонентов отечественного и импортного производства напрямую от производителей и с крупнейших мировых складов;
- Поставка более 17-ти миллионов наименований электронных компонентов;
- Поставка сложных, дефицитных, либо снятых с производства позиций;
- Оперативные сроки поставки под заказ (от 5 рабочих дней);
- Экспресс доставка в любую точку России;
- Техническая поддержка проекта, помощь в подборе аналогов, поставка прототипов;
- Система менеджмента качества сертифицирована по Международному стандарту ISO 9001;
- Лицензия ФСБ на осуществление работ с использованием сведений, составляющих государственную тайну;
- Поставка специализированных компонентов (Xilinx, Altera, Analog Devices, Intersil, Interpoint, Microsemi, Aeroflex, Peregrine, Syfer, Eurofarad, Texas Instrument, Miteq, Cobham, E2V, MA-COM, Hittite, Mini-Circuits, General Dynamics и др.);

Помимо этого, одним из направлений компании «ЭлектроПласт» является направление «Источники питания». Мы предлагаем Вам помощь Конструкторского отдела:

- Подбор оптимального решения, техническое обоснование при выборе компонента;
- Подбор аналогов;
- Консультации по применению компонента;
- Поставка образцов и прототипов;
- Техническая поддержка проекта;
- Защита от снятия компонента с производства.



Как с нами связаться

Телефон: 8 (812) 309 58 32 (многоканальный)

Факс: 8 (812) 320-02-42

Электронная почта: org@eplast1.ru

Адрес: 198099, г. Санкт-Петербург, ул. Калинина, дом 2, корпус 4, литера А.