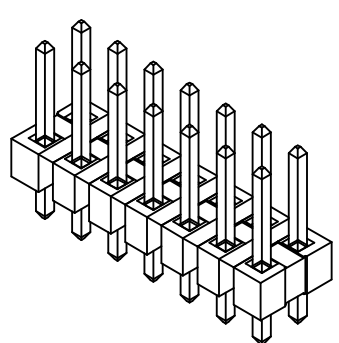
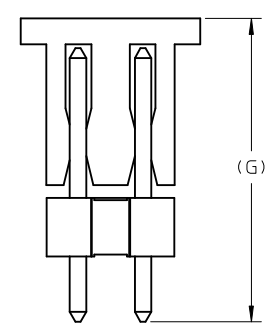
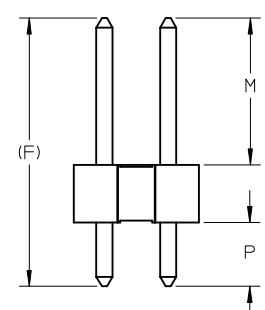
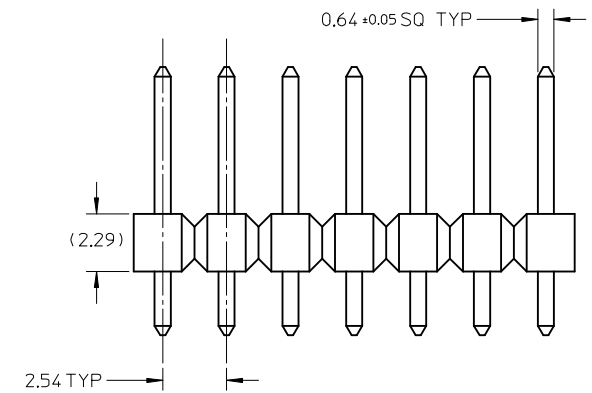


RECOMMENDED P.C.B HOLE LAYOUT



- NOTES:
- MATERIAL:
 - HSG: LCP, GLASS-FILLED, UL94V-0, COLOR: BLACK
 - PIN: 0.64MM SQ PIN, COPPER ALLOY
 - PLATING TYPE:
 - 0.0254 μm GOLD FLASH OVER
1.25 μm MIN. NICKEL OVERALL.
 - 0.025 μm MIN. GOLD PLATE ON CONTACT AND
1.88 μm MIN. TIN ON SOLDERTAIL OVER
1.25 μm MIN. NICKEL OVERALL.
 - 0.25 μm MIN. GOLD PLATE ON CONTACT AND
1.88 μm MIN. TIN ON SOLDERTAIL OVER
1.25 μm MIN. NICKEL OVERALL.
 - 0.38 μm MIN. GOLD PLATE ON CONTACT AND
1.88 μm MIN. TIN ON SOLDERTAIL OVER
1.25 μm MIN. NICKEL OVERALL.
 - 0.75 μm MIN. GOLD PLATE ON CONTACT AND
1.88 μm MIN. TIN ON SOLDERTAIL OVER
1.25 μm MIN. NICKEL OVERALL.
 - 2.50 μm MIN. TIN OVER 1.25 μm MIN. NICKEL OVERALL.
 - 0.38 μm MIN. GOLD PLATE ON CONTACT AND
2.50 μm MIN. TIN ON SOLDERTAIL OVER
1.25 μm MIN. NICKEL OVERALL.
 - 0.38 μm MIN. GOLD PLATE ON CONTACT AND
0.05 μm MIN. GOLD FLASH ON SOLDERTAIL OVER
1.25 μm MIN. NICKEL OVERALL.
 - 0.05 - 0.25 μm MIN. GOLD FLASH OVER
1.25 μm MIN. NICKEL OVERALL.
 - PIN PUSHOUT FORCE: 1KG MIN IN EITHER DIRECTION
 - THE ABOVE 14 CKT IS FOR ILLUSTRATION PURPOSE ONLY.
 - FOR PACKAGING OPTION PLEASE REFER TO THE TABLE.
 - RECOMMENDED PCB THICKNESS 1.60MM.
 - PRODUCT SPECIFICATION: PS-87920-019
 - WAFER TO BE FLAT WITHIN 0.003mm/mm
 - IRREGULAR CIRCUIT CUTOFF WITHIN BREAKAWAY SECTION IS PERMISSIBLE. CUTTING OR CHIPPING OF THE MAIN BODY IS NOT ACCEPTABLE.
 - PARTS ARE NOT STACKABLE ON 2.54 CENTER
 - CAP TO BE PLACED AS CENTRAL OF PART AS POSSIBLE WITH THE TOP SURFACE FLAT FOR PICK AND PLACE.
 - PACKAGING SPECIFICATION:
 - TRAY: PK-89990-489
 - BULK: PK-89990-491


REVISION OF DRAWING MAY BE CHANGED DURING FINAL RELEASED FOR PRODUCTION.

SEE SHEET 14 EC NO: S2015-1512 DRWN: MIRAMAKRI SHINA 2015/06/25 CHKD: ATSEE 2015/06/25 APPR: KPRASAD 2015/07/15	QUALITY SYMBOLS $\nabla_{\text{A}}=0$ $\nabla_{\text{C}}=0$ $\nabla_{\text{P}}=0$	GENERAL TOLERANCES (UNLESS SPECIFIED)		DIMENSION STYLE MM ONLY		SCALE NTS	DESIGN UNITS METRIC	THIRD ANGLE PROJECTION	
				mm	INCH	DRAWN BY KCHO	DATE 2004/11/05	TITLE 2.54MM PITCH DUAL ROW HEADER SINGLE WAFER, T/H	
		4 PLACES	\pm ---	\pm ---	CHECKED BY PTLIM	DATE 2004/12/08			molex DOCUMENT NO. SD-87914-013
		3 PLACES	\pm ---	\pm ---	APPROVED BY MLONG	DATE 2010/09/06			
2 PLACES	± 0.20	\pm ---	MATERIAL NO.		SEE TABLE		SHEET NO. 1 OF 45		
1 PLACE	\pm ---	\pm ---	ANGULAR $\pm 3^\circ$		THIS DRAWING CONTAINS INFORMATION THAT IS PROPRIETARY TO MOLEX INCORPORATED AND SHOULD NOT BE USED WITHOUT WRITTEN PERMISSION				
0 PLACE	\pm	\pm	DRAFT WHERE APPLICABLE MUST REMAIN WITHIN DIMENSIONS						


	10	9	8	7	6	5	4	3	2	1			
	PART NO FOR TRAY PACKAGING	PART NO. FOR TUBE WITHOUT CAP PACKAGING	PART NO. FOR TUBE WITH CAP PACKAGING	PART NO. FOR TAPE & REEL WITHOUT CAP PACKAGING	PART NO. FOR TAPE & REEL WITH CAP PACKAGING	CKT SIZE	VOID POSITION	PLATING TYPE	DIMENSION				
								A	B	F	M	P	
F	87914-0211	-----	-----	-----	-----	2	----	1	2.54	----	10.92	5.84	2.79
	87914-0221	-----	-----	-----	-----	2	----	1	2.54	----	12.25	7.00	2.96
	87914-0231	-----	-----	-----	-----	2	----	1	2.54	----	13.38	6.09	5.00
	87914-0212	-----	-----	-----	-----	2	----	2	2.54	----	10.92	5.84	2.79
	87914-0222	-----	-----	-----	-----	2	----	2	2.54	----	12.25	7.00	2.96
	87914-0232	-----	-----	-----	-----	2	----	2	2.54	----	13.38	6.09	5.00
E	87914-0213	-----	-----	-----	-----	2	----	3	2.54	----	10.92	5.84	2.79
	87914-0223	-----	-----	-----	-----	2	----	3	2.54	----	12.25	7.00	2.96
	87914-0233	-----	-----	-----	-----	2	----	3	2.54	----	13.38	6.09	5.00
	87914-0214	-----	-----	-----	-----	2	----	4	2.54	----	10.92	5.84	2.79
	87914-0224	-----	-----	-----	-----	2	----	4	2.54	----	12.25	7.00	2.96
	87914-0234	-----	-----	-----	-----	2	----	4	2.54	----	13.38	6.09	5.00
D	87914-0215	-----	-----	-----	-----	2	----	5	2.54	----	10.92	5.84	2.79
	87914-0225	-----	-----	-----	-----	2	----	5	2.54	----	12.25	7.00	2.96
	87914-0235	-----	-----	-----	-----	2	----	5	2.54	----	13.38	6.09	5.00
	87914-0216	-----	-----	-----	-----	2	----	6	2.54	----	10.92	5.84	2.79
	87914-0226	-----	-----	-----	-----	2	----	6	2.54	----	12.25	7.00	2.96
	87914-0236	-----	-----	-----	-----	2	----	6	2.54	----	13.38	6.09	5.00
C													
B													

SEE SHEET 14 IEC NO: S2015-1512 DRW:MPRAKRI SHINA 2015/06/25 CHKD:ATSEE 2015/06/25 APPR:KPRASAD 2015/07/15	QUALITY SYMBOLS $\nabla_F = 0$ $\nabla_F = 0$ $\nabla_F = 0$	GENERAL TOLERANCES (UNLESS SPECIFIED)		DIMENSION STYLE MM ONLY		SCALE NTS	DESIGN UNITS METRIC	THIRD ANGLE PROJECTION	
		4 PLACES \pm --- \pm --- 3 PLACES \pm --- \pm --- 2 PLACES \pm 0.20 \pm --- 1 PLACE \pm --- \pm --- 0 PLACE \pm \pm	mm INCH	DRAWN BY KCHO	DATE 2004/11/05	TITLE 2.54MM PITCH DUAL ROW HEADER SINGLE WAFER, T/H			
		ANGULAR \pm 3 °		CHECKED BY PTLIM	DATE 2004/12/08				
		DRAFT WHERE APPLICABLE MUST REMAIN WITHIN DIMENSIONS		APPROVED BY MLONG	DATE 2010/09/06	MATERIAL NO. SEE TABLE	DOCUMENT NO. SD-87914-013	SHEET NO. 2 OF 45	

F	10		9		8		7		6		5		4		3		2		1	
	PART NO FOR TRAY PACKAGING	PART NO. FOR TUBE WITHOUT CAP PACKAGING	PART NO. FOR TUBE WITH CAP PACKAGING	PART NO. FOR TAPE & REEL WITHOUT CAP PACKAGING	PART NO. FOR TAPE & REEL WITH CAP PACKAGING	CKT SIZE	VOID POSITION	PLATING TYPE	DIMENSION											
									A	B	F	M	P							
	87914-0411	-----	-----	-----	-----	4	----	1	5.08	2.54	10.92	5.84	2.79							
	87914-0421	-----	-----	-----	-----	4	----	1	5.08	2.54	12.25	7.00	2.96							
	87914-0431	-----	-----	-----	-----	4	----	1	5.08	2.54	13.38	6.09	5.00							
	87914-0412	-----	-----	-----	-----	4	----	2	5.08	2.54	10.92	5.84	2.79							
	87914-0422	-----	-----	-----	-----	4	----	2	5.08	2.54	12.25	7.00	2.96							
	87914-0432	-----	-----	-----	-----	4	----	2	5.08	2.54	13.38	6.09	5.00							
E	87914-0413	-----	-----	-----	-----	4	----	3	5.08	2.54	10.92	5.84	2.79							
	87914-0423	-----	-----	-----	-----	4	----	3	5.08	2.54	12.25	7.00	2.96							
	87914-0433	-----	-----	-----	-----	4	----	3	5.08	2.54	13.38	6.09	5.00							
	87914-0414	-----	-----	-----	-----	4	----	4	5.08	2.54	10.92	5.84	2.79							
	87914-0424	-----	-----	-----	-----	4	----	4	5.08	2.54	12.25	7.00	2.96							
	87914-0434	-----	-----	-----	-----	4	----	4	5.08	2.54	13.38	6.09	5.00							
D	87914-0415	-----	-----	-----	-----	4	----	5	5.08	2.54	10.92	5.84	2.79							
	87914-0425	-----	-----	-----	-----	4	----	5	5.08	2.54	12.25	7.00	2.96							
	87914-0435	-----	-----	-----	-----	4	----	5	5.08	2.54	13.38	6.09	5.00							
	87914-0416	-----	-----	-----	-----	4	----	6	5.08	2.54	10.92	5.84	2.79							
	87914-0426	-----	-----	-----	-----	4	----	6	5.08	2.54	12.25	7.00	2.96							
	87914-0436	-----	-----	-----	-----	4	----	6	5.08	2.54	13.38	6.09	5.00							
C																				
B																				

SEE SHEET 14 EC NO: S2015-1512 DRWN:IRAMAKRISHNA 2015/06/25 CHKD:ATSEE 2015/06/25 APPR:KPRASAD 2015/07/15	QUALITY SYMBOLS $F_{\Delta} = 0$ $F_{\square} = 0$ $F_{\square} = 0$	GENERAL TOLERANCES (UNLESS SPECIFIED)		DIMENSION STYLE MM ONLY		SCALE NTS	DESIGN UNITS METRIC	THIRD ANGLE PROJECTION				
				mm	INCH	DRAWN BY KCHO	DATE 2004/11/05	TITLE 2.54MM PITCH DUAL ROW HEADER SINGLE WAFER, T/H				
				4 PLACES	\pm ---	\pm ---	CHECKED BY PTLIM	DATE 2004/12/08	 SD-87914-013			
				3 PLACES	\pm ---	\pm ---	APPROVED BY MLONG	DATE 2010/09/06				
		2 PLACES	\pm 0.20	\pm ---	SEE TABLE		3 OF 45					
		1 PLACE	\pm ---	\pm ---	THIS DRAWING CONTAINS INFORMATION THAT IS PROPRIETARY TO MOLEX INCORPORATED AND SHOULD NOT BE USED WITHOUT WRITTEN PERMISSION							
		0 PLACE	\pm	\pm								
		ANGULAR \pm 3 °										
		DRAFT WHERE APPLICABLE MUST REMAIN WITHIN DIMENSIONS										

	10	9	8	7	6	5	4	3	2	1				
	PART NO FOR TRAY PACKAGING	PART NO. FOR TUBE WITHOUT CAP PACKAGING	PART NO. FOR TUBE WITH CAP PACKAGING	PART NO. FOR TAPE & REEL WITHOUT CAP PACKAGING	PART NO. FOR TAPE & REEL WITH CAP PACKAGING	CKT SIZE	VOID POSITION	PLATING TYPE	DIMENSION					
								A	B	F	M	P	G	
F	87914-0611	-----	-----	-----	-----	6	----	1	7.62	5.08	10.92	5.84	2.79	----
	87914-0621	-----	-----	-----	-----	6	----	1	7.62	5.08	12.25	7.00	2.96	----
	87914-0631	-----	-----	-----	-----	6	----	1	7.62	5.08	13.38	6.09	5.00	----
	87914-0612	-----	-----	-----	-----	6	----	2	7.62	5.08	10.92	5.84	2.79	----
	87914-0622	-----	-----	-----	-----	6	----	2	7.62	5.08	12.25	7.00	2.96	----
	87914-0632	-----	-----	-----	-----	6	----	2	7.62	5.08	13.38	6.09	5.00	----
E	87914-0613	-----	-----	-----	-----	6	----	3	7.62	5.08	10.92	5.84	2.79	----
	87914-0623	-----	-----	-----	-----	6	----	3	7.62	5.08	12.25	7.00	2.96	----
	87914-0633	-----	-----	-----	-----	6	----	3	7.62	5.08	13.38	6.09	5.00	----
	87914-0614	-----	-----	-----	-----	6	----	4	7.62	5.08	10.92	5.84	2.79	----
	87914-0624	-----	-----	-----	-----	6	----	4	7.62	5.08	12.25	7.00	2.96	----
	87914-0634	-----	-----	-----	-----	6	----	4	7.62	5.08	13.38	6.09	5.00	----
D	87914-0615	-----	-----	-----	-----	6	----	5	7.62	5.08	10.92	5.84	2.79	----
	87914-0625	-----	-----	-----	-----	6	----	5	7.62	5.08	12.25	7.00	2.96	----
	87914-0635	-----	-----	-----	-----	6	----	5	7.62	5.08	13.38	6.09	5.00	----
	87914-0616	-----	-----	-----	-----	6	----	6	7.62	5.08	10.92	5.84	2.79	----
	87914-0626	-----	-----	-----	-----	6	----	6	7.62	5.08	12.25	7.00	2.96	----
	87914-0636	-----	-----	-----	-----	6	----	6	7.62	5.08	13.38	6.09	5.00	----
C														

SEE SHEET 14 EC NO: S2015-1512 DRW: MRAKRI/SHINA 2015/06/25 CHKD: ATSEE 2015/06/25 APPR: KPRASAD 2015/07/15	QUALITY SYMBOLS ▽=0 ▽=0 ▽=0	GENERAL TOLERANCES (UNLESS SPECIFIED)		DIMENSION STYLE MM ONLY		SCALE NTS	DESIGN UNITS METRIC	THIRD ANGLE PROJECTION		
				mm	INCH	DRAWN BY KCHO	DATE 2004/11/05	TITLE 2.54MM PITCH DUAL ROW HEADER SINGLE WAFER, T/H		
		4 PLACES	± ---	± ---	CHECKED BY PTL IM	DATE 2004/12/08				
		3 PLACES	± ---	± ---	APPROVED BY	DATE 2010/09/06				
2 PLACES	± 0.20	± ---	MATERIAL NO.	DOCUMENT NO. SD-87914-013						
1 PLACE	± ---	± ---	DRAFT WHERE APPLICABLE MUST REMAIN WITHIN DIMENSIONS		SIZE A3	THIS DRAWING CONTAINS INFORMATION THAT IS PROPRIETARY TO MOLEX INCORPORATED AND SHOULD NOT BE USED WITHOUT WRITTEN PERMISSION				
0 PLACE	±	±				SHEET NO. 4 OF 45				

PART NO FOR TRAY PACKAGING	PART NO. FOR TUBE WITHOUT CAP PACKAGING	PART NO. FOR TUBE WITH CAP PACKAGING	PART NO. FOR TAPE & REEL WITHOUT CAP PACKAGING	PART NO. FOR TAPE & REEL WITH CAP PACKAGING	CKT SIZE	VOID POSITION	PLATING TYPE	DIMENSION				
								A	B	F	M	P
87914-0009	-----	-----	-----	-----	6	----	1	7.62	5.08	18.84	13.25	3.30
87914-0642	-----	-----	-----	-----	6	----	2	7.62	5.08	18.84	13.25	3.30
87914-0643	-----	-----	-----	-----	6	----	3	7.62	5.08	18.84	13.25	3.30
87914-0644	-----	-----	-----	-----	6	----	4	7.62	5.08	18.84	13.25	3.30
87914-0645	-----	-----	-----	-----	6	----	5	7.62	5.08	18.84	13.25	3.30
87914-0646	-----	-----	-----	-----	6	----	6	7.62	5.08	18.84	13.25	3.30

SEE SHEET 14 EC NO: S2015-1512 DRWN:RAMAKRISHNA 2015/06/25 CHKD:ATSEE 2015/06/25 APPR:KPRASAD 2015/07/15	QUALITY SYMBOLS $\nabla_A=0$ $\nabla_C=0$ $\nabla_P=0$	GENERAL TOLERANCES (UNLESS SPECIFIED)		DIMENSION STYLE MM ONLY		SCALE NTS	DESIGN UNITS METRIC	THIRD ANGLE PROJECTION	
		4 PLACES \pm --- \pm --- 3 PLACES \pm --- \pm --- 2 PLACES \pm 0.20 \pm --- 1 PLACE \pm --- \pm --- 0 PLACE \pm \pm	mm INCH \pm --- \pm --- \pm --- \pm --- \pm 0.20 \pm --- \pm --- \pm --- \pm \pm	DRAWN BY KCHO	DATE 2004/11/05	TITLE 2.54MM PITCH DUAL ROW HEADER SINGLE WAFER, T/H			
		ANGULAR \pm 3 ° DRAFT WHERE APPLICABLE MUST REMAIN WITHIN DIMENSIONS		CHECKED BY PTLIM	DATE 2004/12/08	APPROVED BY MLONG	DATE 2010/09/06	molex DOCUMENT NO. SD-87914-013	
SHEET NO. 5 OF 45		MATERIAL NO.		THIS DRAWING CONTAINS INFORMATION THAT IS PROPRIETARY TO MOLEX INCORPORATED AND SHOULD NOT BE USED WITHOUT WRITTEN PERMISSION					

	10	9	8	7	6	5	4	3	2	1					
	PART NO FOR TRAY PACKAGING	PART NO. FOR TUBE WITHOUT CAP PACKAGING	PART NO. FOR TUBE WITH CAP PACKAGING	PART NO. FOR TAPE & REEL WITHOUT CAP PACKAGING	PART NO. FOR TAPE & REEL WITH CAP PACKAGING	CKT SIZE	VOID POSITION	PLATING TYPE	DIMENSION						
								A	B	F	M	P	G		
F	87914-0811	-----	-----	-----	-----	8	-----	1	10.16	7.62	10.92	5.84	2.79	----	F
	87914-0821	-----	-----	-----	-----	8	-----	1	10.16	7.62	12.25	7.00	2.96	----	
	87914-0831	-----	-----	-----	-----	8	-----	1	10.16	7.62	13.38	6.09	5.00	----	
	87914-0812	-----	-----	-----	-----	8	-----	2	10.16	7.62	10.92	5.84	2.79	----	
	87914-0822	-----	-----	-----	-----	8	-----	2	10.16	7.62	12.25	7.00	2.96	----	
	87914-0832	-----	-----	-----	-----	8	-----	2	10.16	7.62	13.38	6.09	5.00	----	
E	87914-0813	-----	-----	-----	-----	8	-----	3	10.16	7.62	10.92	5.84	2.79	----	E
	87914-0823	-----	-----	-----	-----	8	-----	3	10.16	7.62	12.25	7.00	2.96	----	
	87914-0833	-----	-----	-----	-----	8	-----	4	10.16	7.62	13.38	6.09	5.00	----	
	87914-0814	-----	-----	-----	-----	8	-----	4	10.16	7.62	10.92	5.84	2.79	----	
	87914-0824	-----	-----	-----	-----	8	-----	4	10.16	7.62	12.25	7.00	2.96	----	
	87914-0834	-----	-----	-----	-----	8	-----	4	10.16	7.62	13.38	6.09	5.00	----	
D	87914-0815	-----	-----	-----	-----	8	-----	5	10.16	7.62	10.92	5.84	2.79	----	D
	87914-0825	-----	-----	-----	-----	8	-----	5	10.16	7.62	12.25	7.00	2.96	----	
	87914-0835	-----	-----	-----	-----	8	-----	5	10.16	7.62	13.38	6.09	5.00	----	
	87914-0816	-----	-----	-----	-----	8	-----	6	10.16	7.62	10.92	5.84	2.79	----	
	87914-0826	-----	-----	-----	-----	8	-----	6	10.16	7.62	12.25	7.00	2.96	----	
	87914-0836	-----	-----	-----	-----	8	-----	6	10.16	7.62	13.38	6.09	5.00	----	
C	87914-0807	-----	-----	-----	-----	8	2.3,4,5,6,8	6	10.16	7.62	21.75	16.51	2.95	----	C

B										B									
---	--	--	--	--	--	--	--	--	--	---	--	--	--	--	--	--	--	--	--

SEE SHEET 14 IEC NO: S2015-1512 DRW: NRAMAKRISHNA 2015/06/25 CH: KD: ATSEE 2015/06/25 APPR: KPRASAD 2015/07/15	QUALITY SYMBOLS	GENERAL TOLERANCES (UNLESS SPECIFIED)		DIMENSION STYLE		SCALE	DESIGN UNITS	THIRD ANGLE PROJECTION		
	$\nabla_F = 0$ $\nabla_E = 0$ $\nabla_D = 0$	mm	INCH	MM ONLY		NTS	METRIC			
		4 PLACES	± ---	± ---	DRAWN BY	DATE	TITLE			
		3 PLACES	± ---	± ---	KCHO	2004/11/05	2.54MM PITCH DUAL ROW HEADER SINGLE WAFER, T/H			
		2 PLACES	± 0.20	± ---	CHECKED BY	DATE				
	1 PLACE	± ---	± ---	PTLIM	2004/12/08					
	0 PLACE	±	±	APPROVED BY	DATE					
		ANGULAR ± 3 °		MLONG	2010/09/06					
		DRAFT WHERE APPLICABLE MUST REMAIN WITHIN DIMENSIONS		MATERIAL NO.		DOCUMENT NO.		SHEET NO.		
				SEE TABLE		SD-87914-013		6 OF 45		
				SIZE A3	THIS DRAWING CONTAINS INFORMATION THAT IS PROPRIETARY TO MOLEX INCORPORATED AND SHOULD NOT BE USED WITHOUT WRITTEN PERMISSION					

PART NO FOR TRAY PACKAGING	PART NO. FOR TUBE WITHOUT CAP PACKAGING	PART NO. FOR TUBE WITH CAP PACKAGING	PART NO. FOR TAPE & REEL WITHOUT CAP PACKAGING	PART NO. FOR TAPE & REEL WITH CAP PACKAGING	PART NO. FOR BULK PACKAGING	CKT SIZE	VOID POSITION	PLATING TYPE	DIMENSION					
									A	B	F	M	P	G
87914-1011	-----	-----	-----	-----	-----	10	----	1	12.70	10.16	10.92	5.84	2.79	----
87914-1021	-----	-----	-----	-----	-----	10	----	1	12.70	10.16	12.25	7.00	2.96	----
87914-1031	-----	-----	-----	-----	-----	10	----	1	12.70	10.16	13.38	6.09	5.00	----
87914-1012	-----	-----	-----	-----	-----	10	----	2	12.70	10.16	10.92	5.84	2.79	----
87914-1022	-----	-----	-----	-----	-----	10	----	2	12.70	10.16	12.25	7.00	2.96	----
87914-1032	-----	-----	-----	-----	-----	10	----	2	12.70	10.16	13.38	6.09	5.00	----
87914-1013	-----	-----	-----	-----	-----	10	----	3	12.70	10.16	10.92	5.84	2.79	----
87914-1023	-----	-----	-----	-----	-----	10	----	3	12.70	10.16	12.25	7.00	2.96	----
87914-1033	-----	-----	-----	-----	-----	10	----	3	12.70	10.16	13.38	6.09	5.00	----
87914-1014	-----	-----	-----	-----	-----	10	----	4	12.70	10.16	10.92	5.84	2.79	----
87914-1024	-----	-----	-----	-----	-----	10	----	4	12.70	10.16	12.25	7.00	2.96	----
87914-1034	-----	-----	-----	-----	-----	10	----	4	12.70	10.16	13.38	6.09	5.00	----
87914-1015	-----	-----	-----	-----	-----	10	----	5	12.70	10.16	10.92	5.84	2.79	----
87914-1025	-----	-----	-----	-----	-----	10	----	5	12.70	10.16	12.25	7.00	2.96	----
87914-1035	-----	-----	-----	-----	-----	10	----	5	12.70	10.16	13.38	6.09	5.00	----
87914-1016	-----	-----	-----	-----	-----	10	----	6	12.70	10.16	10.92	5.84	2.79	----
87914-1026	-----	-----	-----	-----	-----	10	----	6	12.70	10.16	12.25	7.00	2.96	----
87914-1036	-----	-----	-----	-----	-----	10	----	6	12.70	10.16	13.38	6.09	5.00	----
87914-0001	-----	-----	-----	-----	-----	10	----	7	12.70	10.16	12.07	5.97	3.81	----
-----	-----	-----	-----	-----	87914-1037	10	9	4	12.70	10.16	10.92	5.84	2.79	----

SEE SHEET 14 IEC NO: S2015-1512 DRW:MRAMAKRI SHINA 2015/06/25 CHKD:ATSEE 2015/06/25 APPR:KPRASAD 2015/07/15	QUALITY SYMBOLS 	GENERAL TOLERANCES (UNLESS SPECIFIED)		DIMENSION STYLE MM ONLY		SCALE NTS	DESIGN UNITS METRIC	THIRD ANGLE PROJECTION				
				mm	INCH	DRAWN BY KCHO	DATE 2004/11/05	TITLE 2.54MM PITCH DUAL ROW HEADER SINGLE WAFER, T/H				
				4 PLACES	± ---	± ---	CHECKED BY PTLIM	DATE 2004/12/08				
				3 PLACES	± ---	± ---	APPROVED BY	DATE 2010/09/06				
		2 PLACES	± 0.20	± ---	MATERIAL NO.		DOCUMENT NO.		SHEET NO.			
		1 PLACE	± ---	± ---	SEE TABLE		SD-87914-013		8 OF 45			
		0 PLACE	±	±	THIS DRAWING CONTAINS INFORMATION THAT IS PROPRIETARY TO MOLEX INCORPORATED AND SHOULD NOT BE USED WITHOUT WRITTEN PERMISSION							
		ANGULAR ± 3 °										
		DRAFT WHERE APPLICABLE MUST REMAIN WITHIN DIMENSIONS										

10 9 8 7 6 5 4 3 2 1

	PART NO. FOR TRAY PACKAGING	PART NO. FOR TUBE WITHOUT CAP PACKAGING	PART NO. FOR TUBE WITH CAP PACKAGING	PART NO. FOR TAPE & REEL WITHOUT CAP PACKAGING	PART NO. FOR TAPE & REEL WITH CAP PACKAGING	CKT SIZE	VOID POSITION	PLATING TYPE	DIMENSION				
									A	B	F	M	P
F	87914-1211	-----	-----	-----	-----	12	----	1	15.24	12.70	10.92	5.84	2.79
	-----	87914-1291	-----	-----	-----	12	----	9	15.24	12.70	10.92	5.84	2.79
	87914-1221	-----	-----	-----	-----	12	----	1	15.24	12.70	12.25	7.00	2.96
	87914-1231	-----	-----	-----	-----	12	----	1	15.24	12.70	13.38	6.09	5.00
	87914-1212	-----	-----	-----	-----	12	----	2	15.24	12.70	10.92	5.84	2.79
	87914-1222	-----	-----	-----	-----	12	----	2	15.24	12.70	12.25	7.00	2.96
E	87914-1232	-----	-----	-----	-----	12	----	2	15.24	12.70	13.38	6.09	5.00
	87914-1213	-----	-----	-----	-----	12	----	3	15.24	12.70	10.92	5.84	2.79
	87914-1223	-----	-----	-----	-----	12	----	3	15.24	12.70	12.25	7.00	2.96
	87914-1233	-----	-----	-----	-----	12	----	3	15.24	12.70	13.38	6.09	5.00
	87914-1214	-----	-----	-----	-----	12	----	4	15.24	12.70	10.92	5.84	2.79
	87914-1224	-----	-----	-----	-----	12	----	4	15.24	12.70	12.25	7.00	2.96
D	87914-1234	-----	-----	-----	-----	12	----	4	15.24	12.70	13.38	6.09	5.00
	87914-1215	-----	-----	-----	-----	12	----	5	15.24	12.70	10.92	5.84	2.79
	87914-1225	-----	-----	-----	-----	12	----	5	15.24	12.70	12.25	7.00	2.96
	87914-1235	-----	-----	-----	-----	12	----	5	15.24	12.70	13.38	6.09	5.00
	87914-1216	-----	-----	-----	-----	12	----	6	15.24	12.70	10.92	5.84	2.79
	87914-1226	-----	-----	-----	-----	12	----	6	15.24	12.70	12.25	7.00	2.96
C	87914-1236	-----	-----	-----	-----	12	----	6	15.24	12.70	13.38	6.09	5.00

B B

SEE SHEET 14 EC NO: S2015-1512 DRW: N/MPRAKRI SHINA 2015/06/25 CHKD: ATSEE 2015/06/25 APPR: KPRASAD 2015/07/15	REV DESCRIPTION 1 QUALITY SYMBOLS 2 QUALITY SYMBOLS 3 QUALITY SYMBOLS	GENERAL TOLERANCES (UNLESS SPECIFIED)		DIMENSION STYLE MM ONLY		SCALE NTS	DESIGN UNITS METRIC	THIRD ANGLE PROJECTION			
				mm	INCH	DRAWN BY KCHO	DATE 2004/11/05	TITLE 2.54MM PITCH DUAL ROW HEADER SINGLE WAFER, T/H			
		4 PLACES		± ---	± ---	CHECKED BY PTL IM	DATE 2004/12/08	molex			
		3 PLACES		± ---	± ---	APPROVED BY	DATE 2010/09/06				
2 PLACES		± 0.20	± ---	MATERIAL NO.		DOCUMENT NO.		SHEET NO.			
1 PLACE		± ---	± ---	SEE TABLE		SD-87914-013		9 OF 45			
0 PLACE		±	±	DRAFT WHERE APPLICABLE MUST REMAIN WITHIN DIMENSIONS							
		ANGULAR ± 3°		THIS DRAWING CONTAINS INFORMATION THAT IS PROPRIETARY TO MOLEX INCORPORATED AND SHOULD NOT BE USED WITHOUT WRITTEN PERMISSION							

A A

fb_frame_A3_P_AM_T Rev. G 2012/01/11 9 8 7 6 5 4 3 2 1

PART NO FOR TRAY PACKAGING	PART NO. FOR TUBE WITHOUT CAP PACKAGING	PART NO. FOR TUBE WITH CAP PACKAGING	PART NO. FOR TAPE & REEL WITHOUT CAP PACKAGING	PART NO. FOR TAPE & REEL WITH CAP PACKAGING	CKT SIZE	VOID POSITION	PLATING TYPE	DIMENSION				
								A	B	F	M	P
								F	87914-1251	-----	-----	-----
	87914-1252	-----	-----	-----	12	----	2	15.24	12.70	18.40	13.08	3.03
	87914-1253	-----	-----	-----	12	----	3	15.24	12.70	18.40	13.08	3.03
	87914-1254	-----	-----	-----	12	----	4	15.24	12.70	18.40	13.08	3.03
	87914-1255	-----	-----	-----	12	----	5	15.24	12.70	18.40	13.08	3.03
	87914-1256	-----	-----	-----	12	----	6	15.24	12.70	18.40	13.08	3.03
E	87914-1241	-----	-----	-----	12	----	1	15.24	12.70	12.50	6.95	3.26
	87914-1242	-----	-----	-----	12	----	2	15.24	12.70	12.50	6.95	3.26
	87914-1243	-----	-----	-----	12	----	3	15.24	12.70	12.50	6.95	3.26
	87914-1244	-----	-----	-----	12	----	4	15.24	12.70	12.50	6.95	3.26
	87914-1245	-----	-----	-----	12	----	5	15.24	12.70	12.50	6.95	3.26
	87914-1246	-----	-----	-----	12	----	6	15.24	12.70	29.26	23.32	3.65
D												
C												
B												

SEE SHEET 14 IEC NO: S2015-1512 DRW:MRAMAKRI SHINA 2015/06/25 CHKD:ATSEE 2015/06/25 APPR:KPRASAD 2015/07/15	QUALITY SYMBOLS 	GENERAL TOLERANCES (UNLESS SPECIFIED)		DIMENSION STYLE MM ONLY		SCALE NTS	DESIGN UNITS METRIC	THIRD ANGLE PROJECTION			
				mm	INCH	DRAWN BY KCHO	DATE 2004/11/05	TITLE 2.54MM PITCH DUAL ROW HEADER SINGLE WAFER, T/H			
		4 PLACES	± ---	± ---	CHECKED BY PTLIM	DATE 2004/12/08					
		3 PLACES	± ---	± ---	APPROVED BY MLONG	DATE 2010/09/06	MATERIAL NO.	DOCUMENT NO.			
2 PLACES	± 0.20	± ---	DRAFT WHERE APPLICABLE MUST REMAIN WITHIN DIMENSIONS		SEE TABLE		SD-87914-013		SHEET NO. 10 OF 45		
1 PLACE	± ---	± ---	THIS DRAWING CONTAINS INFORMATION THAT IS PROPRIETARY TO MOLEX INCORPORATED AND SHOULD NOT BE USED WITHOUT WRITTEN PERMISSION								
0 PLACE	±	±									

F	10	9	8	7	6	5	4	3	2	1			
	PART NO FOR TRAY PACKAGING	PART NO. FOR TUBE WITHOUT CAP PACKAGING	PART NO. FOR TUBE WITH CAP PACKAGING	PART NO. FOR TAPE & REEL WITHOUT CAP PACKAGING	PART NO. FOR TAPE & REEL WITH CAP PACKAGING	CKT SIZE	VOID POSITION	PLATING TYPE	DIMENSION				
									A	B	F	M	P
	87914-1411	-----	-----	-----	-----	14	----	1	17.78	15.24	10.92	5.84	2.79
	87914-1421	-----	-----	-----	-----	14	----	1	17.78	15.24	12.25	7.00	2.96
	87914-1431	-----	-----	-----	-----	14	----	1	17.78	15.24	13.38	6.09	5.00
	87914-1412	-----	-----	-----	-----	14	----	2	17.78	15.24	10.92	5.84	2.79
	87914-1422	-----	-----	-----	-----	14	----	2	17.78	15.24	12.25	7.00	2.96
	87914-1432	-----	-----	-----	-----	14	----	2	17.78	15.24	13.38	6.09	5.00
E	87914-1413	-----	-----	-----	-----	14	----	3	17.78	15.24	10.92	5.84	2.79
	87914-1423	-----	-----	-----	-----	14	----	3	17.78	15.24	12.25	7.00	2.96
	87914-1433	-----	-----	-----	-----	14	----	3	17.78	15.24	13.38	6.09	5.00
	87914-1414	-----	-----	-----	-----	14	----	4	17.78	15.24	10.92	5.84	2.79
	87914-1424	-----	-----	-----	-----	14	----	4	17.78	15.24	12.25	7.00	2.96
	87914-1434	-----	-----	-----	-----	14	----	4	17.78	15.24	13.38	6.09	5.00
D	87914-1415	-----	-----	-----	-----	14	----	5	17.78	15.24	10.92	5.84	2.79
	87914-1425	-----	-----	-----	-----	14	----	5	17.78	15.24	12.25	7.00	2.96
	87914-1435	-----	-----	-----	-----	14	----	5	17.78	15.24	13.38	6.09	5.00
	87914-1416	-----	-----	-----	-----	14	----	6	17.78	15.24	10.92	5.84	2.79
	87914-1426	-----	-----	-----	-----	14	----	6	17.78	15.24	12.25	7.00	2.96
	87914-1436	-----	-----	-----	-----	14	----	6	17.78	15.24	13.38	6.09	5.00
C	87914-0007	-----	-----	-----	-----	14	----	6	17.78	15.24	13.42	8.08	3.05

SEE SHEET 14 EC NO: S2015-1512 DRW: NRAMAKRI SHINA 2015/06/25 CHKD: ATSEE 2015/06/25 APPR: KPRASAD 2015/07/15	REV DESCRIPTION	QUALITY SYMBOLS	GENERAL TOLERANCES (UNLESS SPECIFIED)	DIMENSION STYLE	SCALE	DESIGN UNITS	THIRD ANGLE PROJECTION
		$\nabla_F = 0$ $\nabla_F = 0$ $\nabla_F = 0$	mm INCH 4 PLACES ± --- ± --- 3 PLACES ± --- ± --- 2 PLACES ± 0.20 ± --- 1 PLACE ± --- ± --- 0 PLACE ± ±	MM ONLY	NTS	METRIC	
				DRAWN BY	DATE	TITLE	
				CHECKED BY	DATE		
APPROVED BY	DATE						
			ANGULAR ± 3 °	MATERIAL NO.	DOCUMENT NO.		
			DRAFT WHERE APPLICABLE MUST REMAIN WITHIN DIMENSIONS	SEE TABLE			
				SIZE A3	THIS DRAWING CONTAINS INFORMATION THAT IS PROPRIETARY TO MOLEX INCORPORATED AND SHOULD NOT BE USED WITHOUT WRITTEN PERMISSION		

PART NO FOR TRAY PACKAGING	PART NO. FOR TUBE WITHOUT CAP PACKAGING	PART NO. FOR TUBE WITH CAP PACKAGING	PART NO. FOR TAPE & REEL WITHOUT CAP PACKAGING	PART NO. FOR TAPE & REEL WITH CAP PACKAGING	CKT SIZE	VOID POSITION	PLATING TYPE	DIMENSION				
								A	B	F	M	P
87914-1441	-----	-----	-----	-----	14	----	1	17.78	15.24	13.42	8.08	3.05
87914-1442	-----	-----	-----	-----	14	----	2	17.78	15.24	13.42	8.08	3.05
87914-1443	-----	-----	-----	-----	14	----	3	17.78	15.24	13.42	8.08	3.05
87914-1444	-----	-----	-----	-----	14	----	4	17.78	15.24	13.42	8.08	3.05
87914-1445	-----	-----	-----	-----	14	----	5	17.78	15.24	13.42	8.08	3.05

SEE SHEET 14 IEC NO: S2015-1512 DRW: N/PRAMAKRISHNA 2015/06/25 CH/KD: ATSEE 2015/06/25 APPR: KPRASAD 2015/07/15	QUALITY SYMBOLS	GENERAL TOLERANCES (UNLESS SPECIFIED)	DIMENSION STYLE	SCALE	DESIGN UNITS	THIRD ANGLE PROJECTION																		
	$\nabla_{\text{F}} = 0$ $\nabla_{\text{E}} = 0$ $\nabla_{\text{D}} = 0$	<table border="1"> <tr> <th></th> <th>mm</th> <th>INCH</th> </tr> <tr> <td>4 PLACES</td> <td>\pm---</td> <td>\pm---</td> </tr> <tr> <td>3 PLACES</td> <td>\pm---</td> <td>\pm---</td> </tr> <tr> <td>2 PLACES</td> <td>\pm0.20</td> <td>\pm---</td> </tr> <tr> <td>1 PLACE</td> <td>\pm---</td> <td>\pm---</td> </tr> <tr> <td>0 PLACE</td> <td>\pm</td> <td>\pm</td> </tr> </table>		mm	INCH	4 PLACES	\pm ---	\pm ---	3 PLACES	\pm ---	\pm ---	2 PLACES	\pm 0.20	\pm ---	1 PLACE	\pm ---	\pm ---	0 PLACE	\pm	\pm	MM ONLY	NTS	METRIC	
		mm	INCH																					
	4 PLACES	\pm ---	\pm ---																					
3 PLACES	\pm ---	\pm ---																						
2 PLACES	\pm 0.20	\pm ---																						
1 PLACE	\pm ---	\pm ---																						
0 PLACE	\pm	\pm																						
	ANGULAR \pm 3°	DRAWN BY DATE	TITLE																					
	DRAFT WHERE APPLICABLE MUST REMAIN WITHIN DIMENSIONS	CHECKED BY DATE PTLIM 2004/12/08 APPROVED BY DATE MLONG 2010/09/06	2.54MM PITCH DUAL ROW HEADER SINGLE WAFER, T/H DOCUMENT NO. SD-87914-013																					

	10	9	8	7	6	5	4	3	2	1				
	PART NO FOR TRAY PACKAGING	PART NO. FOR TUBE WITHOUT CAP PACKAGING	PART NO. FOR TUBE WITH CAP PACKAGING	PART NO. FOR TAPE & REEL WITHOUT CAP PACKAGING	PART NO. FOR TAPE & REEL WITH CAP PACKAGING	CKT SIZE	VOID POSITION	PLATING TYPE	DIMENSION					
								A	B	F	M	P		
F	87914-1611	-----	-----	-----	-----	16	----	1	20.32	17.78	10.92	5.84	2.79	F
	87914-1621	-----	-----	-----	-----	16	----	1	20.32	17.78	12.25	7.00	2.96	
	87914-1631	-----	-----	-----	-----	16	----	1	20.32	17.78	13.38	6.09	5.00	
	87914-1612	-----	-----	-----	-----	16	----	2	20.32	17.78	10.92	5.84	2.79	
	87914-1622	-----	-----	-----	-----	16	----	2	20.32	17.78	12.25	7.00	2.96	
	87914-1632	-----	-----	-----	-----	16	----	2	20.32	17.78	13.38	6.09	5.00	
E	87914-1613	-----	-----	-----	-----	16	----	3	20.32	17.78	10.92	5.84	2.79	E
	87914-1623	-----	-----	-----	-----	16	----	3	20.32	17.78	12.25	7.00	2.96	
	87914-1633	-----	-----	-----	-----	16	----	3	20.32	17.78	13.38	6.09	5.00	
	87914-1614	-----	-----	-----	-----	16	----	4	20.32	17.78	10.92	5.84	2.79	
	87914-1624	-----	-----	-----	-----	16	----	4	20.32	17.78	12.25	7.00	2.96	
	87914-1634	-----	-----	-----	-----	16	----	4	20.32	17.78	13.38	6.09	5.00	
D	87914-1615	-----	-----	-----	-----	16	----	5	20.32	17.78	10.92	5.84	2.79	D
	87914-1625	-----	-----	-----	-----	16	----	5	20.32	17.78	12.25	7.00	2.96	
	87914-1635	-----	-----	-----	-----	16	----	5	20.32	17.78	13.38	6.09	5.00	
	87914-1616	-----	-----	-----	-----	16	----	6	20.32	17.78	10.92	5.84	2.79	
	87914-1626	-----	-----	-----	-----	16	----	6	20.32	17.78	12.25	7.00	2.96	
	87914-1636	-----	-----	-----	-----	16	----	6	20.32	17.78	13.38	6.09	5.00	
C	87914-1600	-----	-----	-----	-----	16	----	6	20.32	17.78	9.49	4.50	2.70	C
	87914-1637	-----	-----	-----	-----	16	----	6	20.32	17.78	15.79	10.45	3.05	
B														B

SEE SHEET 14 IEC NO: S2015-1512 DRAWN: PRAMAKRI SHINA 2015/06/25 CHKD: ATSEE 2015/06/25 APPR: KPRASAD 2015/07/15 REV	QUALITY SYMBOLS	GENERAL TOLERANCES (UNLESS SPECIFIED)	DIMENSION STYLE	SCALE	DESIGN UNITS	THIRD ANGLE PROJECTION																	
	$\nabla_F = 0$ $\nabla_E = 0$ $\nabla_P = 0$	<table border="1"> <tr><th colspan="2">mm</th><th>INCH</th></tr> <tr><td>4 PLACES</td><td>± ---</td><td>± ---</td></tr> <tr><td>3 PLACES</td><td>± ---</td><td>± ---</td></tr> <tr><td>2 PLACES</td><td>± 0.20</td><td>± ---</td></tr> <tr><td>1 PLACE</td><td>± ---</td><td>± ---</td></tr> <tr><td>0 PLACE</td><td>±</td><td>±</td></tr> </table>	mm		INCH		4 PLACES	± ---	± ---	3 PLACES	± ---	± ---	2 PLACES	± 0.20	± ---	1 PLACE	± ---	± ---	0 PLACE	±	±	MM ONLY	NTS
	mm		INCH																				
	4 PLACES	± ---	± ---																				
3 PLACES	± ---	± ---																					
2 PLACES	± 0.20	± ---																					
1 PLACE	± ---	± ---																					
0 PLACE	±	±																					
	ANGULAR ± 3 °	DRAWN BY DATE KCHO 2004/11/05	TITLE 2.54MM PITCH DUAL ROW HEADER SINGLE WAFER, T/H																				
	DRAFT WHERE APPLICABLE MUST REMAIN WITHIN DIMENSIONS	CHECKED BY DATE PTLIM 2004/12/08	APPROVED BY DATE MLONG 2010/09/06																				
		SEE TABLE	MATERIAL NO.	DOCUMENT NO.	SHEET NO.																		
					13 OF 45																		

PART NO FOR TRAY PACKAGING	PART NO. FOR TUBE WITHOUT CAP PACKAGING	PART NO. FOR TUBE WITH CAP PACKAGING	PART NO. FOR TAPE & REEL WITHOUT CAP PACKAGING	PART NO. FOR TAPE & REEL WITH CAP PACKAGING	CKT SIZE	VOID POSITION	PLATING TYPE	DIMENSION					
								A	B	F	M	P	G
87914-1811	-----	-----	-----	-----	18	----	1	22.86	20.32	10.92	5.84	2.79	----
87914-1821	-----	-----	-----	-----	18	----	1	22.86	20.32	12.25	7.00	2.96	----
87914-1831	-----	-----	-----	-----	18	----	1	22.86	20.32	13.38	6.09	5.00	----
87914-1812	-----	-----	-----	-----	18	----	2	22.86	20.32	10.92	5.84	2.79	----
87914-1822	-----	-----	-----	-----	18	----	2	22.86	20.32	12.25	7.00	2.96	----
87914-1832	-----	-----	-----	-----	18	----	2	22.86	20.32	13.38	6.09	5.00	----
87914-1813	-----	-----	-----	-----	18	----	3	22.86	20.32	10.92	5.84	2.79	----
87914-1823	-----	-----	-----	-----	18	----	3	22.86	20.32	12.25	7.00	2.96	----
87914-1833	-----	-----	-----	-----	18	----	3	22.86	20.32	13.38	6.09	5.00	----
87914-1814	-----	-----	-----	-----	18	----	4	22.86	20.32	10.92	5.84	2.79	----
87914-1824	-----	-----	-----	-----	18	----	4	22.86	20.32	12.25	7.00	2.96	----
87914-1834	-----	-----	-----	-----	18	----	4	22.86	20.32	13.38	6.09	5.00	----
87914-1815	-----	-----	-----	-----	18	----	5	22.86	20.32	10.92	5.84	2.79	----
87914-1825	-----	-----	-----	-----	18	----	5	22.86	20.32	12.25	7.00	2.96	----
87914-1835	-----	-----	-----	-----	18	----	5	22.86	20.32	13.38	6.09	5.00	----
87914-1816	-----	-----	-----	-----	18	----	6	22.86	20.32	10.92	5.84	2.79	----
87914-1826	-----	-----	-----	-----	18	----	6	22.86	20.32	12.25	7.00	2.96	----
87914-1836	-----	-----	-----	-----	18	----	6	22.86	20.32	13.38	6.09	5.00	----
-----	-----	87914-1807	-----	-----	18	----	6	22.86	20.32	17.02	11.05	3.68	18.02

ADD P/N: 87914-1807 IEC NO: S2015-1512 DRW:MRAMAKRI SHINA 2015/06/25 CHKD:ATSEE 2015/06/25 APPR:KPRASAD 2015/07/15 REV	QUALITY SYMBOLS	GENERAL TOLERANCES (UNLESS SPECIFIED)	DIMENSION STYLE	SCALE	DESIGN UNITS	THIRD ANGLE PROJECTION
	$\nabla_F = 0$ $\nabla_F = 0$ $\nabla_F = 0$	mm INCH	MM ONLY	NTS	METRIC	
		4 PLACES \pm --- \pm --- 3 PLACES \pm --- \pm --- 2 PLACES \pm 0.20 \pm --- 1 PLACE \pm --- \pm --- 0 PLACE \pm \pm	DRAWN BY DATE KCHO 2004/11/05 CHECKED BY DATE PTLIM 2004/12/08 APPROVED BY DATE MLONG 2010/09/06	TITLE		
		ANGULAR \pm 3 °	MATERIAL NO.	2.54MM PITCH DUAL ROW HEADER SINGLE WAFER, T/H molex DOCUMENT NO.		
	DRAFT WHERE APPLICABLE MUST REMAIN WITHIN DIMENSIONS	SEE TABLE	SD-87914-013			SHEET NO. 14 OF 45
			THIS DRAWING CONTAINS INFORMATION THAT IS PROPRIETARY TO MOLEX INCORPORATED AND SHOULD NOT BE USED WITHOUT WRITTEN PERMISSION			

	10	9	8	7	6	5	4	3	2	1				
	PART NO FOR TRAY PACKAGING	PART NO. FOR TUBE WITHOUT CAP PACKAGING	PART NO. FOR TUBE WITH CAP PACKAGING	PART NO. FOR TAPE & REEL WITHOUT CAP PACKAGING	PART NO. FOR TAPE & REEL WITH CAP PACKAGING	CKT SIZE	VOID POSITION	PLATING TYPE	DIMENSION					
								A	B	F	M	P		
F	87914-2011	-----	-----	-----	-----	20	----	1	25.40	22.86	10.92	5.84	2.79	F
	87914-2021	-----	-----	-----	-----	20	----	1	25.40	22.86	12.25	7.00	2.96	
	87914-2031	-----	-----	-----	-----	20	----	1	25.40	22.86	13.38	6.09	5.00	
	87914-2012	-----	-----	-----	-----	20	----	2	25.40	22.86	10.92	5.84	2.79	
	87914-2022	-----	-----	-----	-----	20	----	2	25.40	22.86	12.25	7.00	2.96	
	87914-2032	-----	-----	-----	-----	20	----	2	25.40	22.86	13.38	6.09	5.00	
E	87914-2013	-----	-----	-----	-----	20	----	3	25.40	22.86	10.92	5.84	2.79	E
	87914-2023	-----	-----	-----	-----	20	----	3	25.40	22.86	12.25	7.00	2.96	
	87914-2033	-----	-----	-----	-----	20	----	3	25.40	22.86	13.38	6.09	5.00	
	87914-2014	-----	-----	-----	-----	20	----	4	25.40	22.86	10.92	5.84	2.79	
	87914-2024	-----	-----	-----	-----	20	----	4	25.40	22.86	12.25	7.00	2.96	
	87914-2034	-----	-----	-----	-----	20	----	4	25.40	22.86	13.38	6.09	5.00	
D	87914-2015	-----	-----	-----	-----	20	----	5	25.40	22.86	10.92	5.84	2.79	D
	87914-2025	-----	-----	-----	-----	20	----	5	25.40	22.86	12.25	7.00	2.96	
	87914-2035	-----	-----	-----	-----	20	----	5	25.40	22.86	13.38	6.09	5.00	
	87914-2016	-----	-----	-----	-----	20	----	6	25.40	22.86	10.92	5.84	2.79	
	87914-2026	-----	-----	-----	-----	20	----	6	25.40	22.86	12.25	7.00	2.96	
	87914-2036	-----	-----	-----	-----	20	----	6	25.40	22.86	13.38	6.09	5.00	
C														C
B														B

SEE SHEET 14 IEC NO: S2015-1512 DRAWN: PRAMAKRI SHINA 2015/06/25 CHKD: ATSEE 2015/06/25 APPR: KPRASAD 2015/07/15	QUALITY SYMBOLS	GENERAL TOLERANCES (UNLESS SPECIFIED)	DIMENSION STYLE	SCALE	DESIGN UNITS	THIRD ANGLE PROJECTION																		
	$\nabla_F = 0$ $\nabla_E = 0$ $\nabla_P = 0$	<table border="1"> <tr><th colspan="2">mm</th><th>INCH</th></tr> <tr><td>4 PLACES</td><td>± ---</td><td>± ---</td></tr> <tr><td>3 PLACES</td><td>± ---</td><td>± ---</td></tr> <tr><td>2 PLACES</td><td>± 0.20</td><td>± ---</td></tr> <tr><td>1 PLACE</td><td>± ---</td><td>± ---</td></tr> <tr><td>0 PLACE</td><td>±</td><td>±</td></tr> </table>	mm		INCH	4 PLACES	± ---	± ---	3 PLACES	± ---	± ---	2 PLACES	± 0.20	± ---	1 PLACE	± ---	± ---	0 PLACE	±	±	MM ONLY	NTS	METRIC	
	mm		INCH																					
	4 PLACES	± ---	± ---																					
3 PLACES	± ---	± ---																						
2 PLACES	± 0.20	± ---																						
1 PLACE	± ---	± ---																						
0 PLACE	±	±																						
DESCRIPTION	<table border="1"> <tr><th colspan="2">DRAWN BY</th><th>DATE</th></tr> <tr><td>KCHO</td><td></td><td>2004/11/05</td></tr> <tr><th colspan="2">CHECKED BY</th><th>DATE</th></tr> <tr><td>PTLIM</td><td></td><td>2004/12/08</td></tr> <tr><th colspan="2">APPROVED BY</th><th>DATE</th></tr> <tr><td>MLONG</td><td></td><td>2010/09/06</td></tr> </table>	DRAWN BY		DATE	KCHO		2004/11/05	CHECKED BY		DATE	PTLIM		2004/12/08	APPROVED BY		DATE	MLONG		2010/09/06	TITLE	2.54MM PITCH DUAL ROW HEADER SINGLE WAFER, T/H			
DRAWN BY		DATE																						
KCHO		2004/11/05																						
CHECKED BY		DATE																						
PTLIM		2004/12/08																						
APPROVED BY		DATE																						
MLONG		2010/09/06																						
REV	ANGULAR ± 3 °	DRAFT WHERE APPLICABLE MUST REMAIN WITHIN DIMENSIONS	MATERIAL NO.	DOCUMENT NO.	SHEET NO.																			
D15	SEE TABLE		SD-87914-013	15 OF 45																				

PART NO FOR TRAY PACKAGING	PART NO. FOR TUBE WITHOUT CAP PACKAGING	PART NO. FOR TUBE WITH CAP PACKAGING	PART NO. FOR TAPE & REEL WITHOUT CAP PACKAGING	PART NO. FOR TAPE & REEL WITH CAP PACKAGING	CKT SIZE	VOID POSITION	PLATING TYPE	DIMENSION				
								A	B	F	M	P
								F	87914-2211	-----	-----	-----
	87914-2221	-----	-----	-----	22	----	1	27.94	25.40	12.25	7.00	2.96
	87914-2231	-----	-----	-----	22	----	1	27.94	25.40	13.38	6.09	5.00
	87914-2212	-----	-----	-----	22	----	2	27.94	25.40	10.92	5.84	2.79
	87914-2222	-----	-----	-----	22	----	2	27.94	25.40	12.25	7.00	2.96
	87914-2232	-----	-----	-----	22	----	2	27.94	25.40	13.38	6.09	5.00
E	87914-2213	-----	-----	-----	22	----	3	27.94	25.40	10.92	5.84	2.79
	87914-2223	-----	-----	-----	22	----	3	27.94	25.40	12.25	7.00	2.96
	87914-2233	-----	-----	-----	22	----	3	27.94	25.40	13.38	6.09	5.00
	87914-2214	-----	-----	-----	22	----	4	27.94	25.40	10.92	5.84	2.79
	87914-2224	-----	-----	-----	22	----	4	27.94	25.40	12.25	7.00	2.96
	87914-2234	-----	-----	-----	22	----	4	27.94	25.40	13.38	6.09	5.00
D	87914-2215	-----	-----	-----	22	----	5	27.94	25.40	10.92	5.84	2.79
	87914-2225	-----	-----	-----	22	----	5	27.94	25.40	12.25	7.00	2.96
	87914-2235	-----	-----	-----	22	----	5	27.94	25.40	13.38	6.09	5.00
	87914-2216	-----	-----	-----	22	----	6	27.94	25.40	10.92	5.84	2.79
	87914-2226	-----	-----	-----	22	----	6	27.94	25.40	12.25	7.00	2.96
	87914-2236	-----	-----	-----	22	----	6	27.94	25.40	13.38	6.09	5.00
C												
B												

SEE SHEET 14 IEC NO: S2015-1512 DRW:MPRAMAKRI SHINA 2015/06/25 CHKD:ATSEE 2015/06/25 APPR:KPRASAD 2015/07/15	QUALITY SYMBOLS $\nabla_F = 0$ $\nabla_E = 0$ $\nabla_P = 0$	GENERAL TOLERANCES (UNLESS SPECIFIED)		DIMENSION STYLE MM ONLY		SCALE NTS	DESIGN UNITS METRIC	THIRD ANGLE PROJECTION			
				mm	INCH	DRAWN BY KCHO	DATE 2004/11/05	TITLE 2.54MM PITCH DUAL ROW HEADER SINGLE WAFER, T/H			
		4 PLACES	± ---	± ---	CHECKED BY PTLIM	DATE 2004/12/08					
		3 PLACES	± ---	± ---	APPROVED BY	DATE	MATERIAL NO. MLONG		DOCUMENT NO. SD-87914-013		SHEET NO. 16 OF 45
2 PLACES	± 0.20	± ---	DATE 2010/09/06								
1 PLACE	± ---	± ---	ANGULAR ± 3 °		SEE TABLE		THIS DRAWING CONTAINS INFORMATION THAT IS PROPRIETARY TO MOLEX INCORPORATED AND SHOULD NOT BE USED WITHOUT WRITTEN PERMISSION				
0 PLACE	±	±	DRAFT WHERE APPLICABLE MUST REMAIN WITHIN DIMENSIONS		SIZE A3						

PART NO FOR TRAY PACKAGING	PART NO. FOR TUBE WITHOUT CAP PACKAGING	PART NO. FOR TUBE WITH CAP PACKAGING	PART NO. FOR TAPE & REEL WITHOUT CAP PACKAGING	PART NO. FOR TAPE & REEL WITH CAP PACKAGING	CKT SIZE	VOID POSITION	PLATING TYPE	DIMENSION				
								A	B	F	M	P
								F	87914-2411	-----	-----	-----
	87914-2421	-----	-----	-----	24	----	1	30.48	27.94	12.25	7.00	2.96
	87914-2431	-----	-----	-----	24	----	1	30.48	27.94	13.38	6.09	5.00
	87914-2412	-----	-----	-----	24	----	2	30.48	27.94	10.92	5.84	2.79
	87914-2422	-----	-----	-----	24	----	2	30.48	27.94	12.25	7.00	2.96
	87914-2432	-----	-----	-----	24	----	2	30.48	27.94	13.38	6.09	5.00
E	87914-2413	-----	-----	-----	24	----	3	30.48	27.94	10.92	5.84	2.79
	87914-2423	-----	-----	-----	24	----	3	30.48	27.94	12.25	7.00	2.96
	87914-2433	-----	-----	-----	24	----	3	30.48	27.94	13.38	6.09	5.00
	87914-2414	-----	-----	-----	24	----	4	30.48	27.94	10.92	5.84	2.79
	87914-2424	-----	-----	-----	24	----	4	30.48	27.94	12.25	7.00	2.96
	87914-2434	-----	-----	-----	24	----	4	30.48	27.94	13.38	6.09	5.00
D	87914-2415	-----	-----	-----	24	----	5	30.48	27.94	10.92	5.84	2.79
	87914-2425	-----	-----	-----	24	----	5	30.48	27.94	12.25	7.00	2.96
	87914-2435	-----	-----	-----	24	----	5	30.48	27.94	13.38	6.09	5.00
	87914-2416	-----	-----	-----	24	----	6	30.48	27.94	10.92	5.84	2.79
	87914-2426	-----	-----	-----	24	----	6	30.48	27.94	12.25	7.00	2.96
	87914-2436	-----	-----	-----	24	----	6	30.48	27.94	13.38	6.09	5.00
C												
B												

SEE SHEET 14 IEC NO: S2015-1512 DRW:MPRAMAKRI SHINA 2015/06/25 CHKD:ATSEE 2015/06/25 APPR:KPRASAD 2015/07/15	QUALITY SYMBOLS =0 =0 =0	GENERAL TOLERANCES (UNLESS SPECIFIED)		DIMENSION STYLE MM ONLY		SCALE NTS	DESIGN UNITS METRIC	THIRD ANGLE PROJECTION			
				mm	INCH	DRAWN BY KCHO	DATE 2004/11/05	TITLE 2.54MM PITCH DUAL ROW HEADER SINGLE WAFER, T/H			
		4 PLACES	± ---	± ---	CHECKED BY PTLIM	DATE 2004/12/08					
		3 PLACES	± ---	± ---	APPROVED BY MLONG	DATE 2010/09/06					
2 PLACES	± 0.20	± ---	MATERIAL NO.		DOCUMENT NO.		SHEET NO.				
1 PLACE	± ---	± ---	SEE TABLE		SD-87914-013		17 OF 45				
0 PLACE	±	±	DRAFT WHERE APPLICABLE MUST REMAIN WITHIN DIMENSIONS		THIS DRAWING CONTAINS INFORMATION THAT IS PROPRIETARY TO MOLEX INCORPORATED AND SHOULD NOT BE USED WITHOUT WRITTEN PERMISSION						

PART NO FOR TRAY PACKAGING	PART NO. FOR TUBE WITHOUT CAP PACKAGING	PART NO. FOR TUBE WITH CAP PACKAGING	PART NO. FOR TAPE & REEL WITHOUT CAP PACKAGING	PART NO. FOR TAPE & REEL WITH CAP PACKAGING	CKT SIZE	VOID POSITION	PLATING TYPE	DIMENSION				
								A	B	F	M	P
								F	87914-2611	-----	-----	-----
	87914-2621	-----	-----	-----	26	----	1	33.02	30.48	12.25	7.00	2.96
	87914-2631	-----	-----	-----	26	----	1	33.02	30.48	13.38	6.09	5.00
	87914-2612	-----	-----	-----	26	----	2	33.02	30.48	10.92	5.84	2.79
	87914-2622	-----	-----	-----	26	----	2	33.02	30.48	12.25	7.00	2.96
	87914-2632	-----	-----	-----	26	----	2	33.02	30.48	13.38	6.09	5.00
E	87914-2613	-----	-----	-----	26	----	3	33.02	30.48	10.92	5.84	2.79
	87914-2623	-----	-----	-----	26	----	3	33.02	30.48	12.25	7.00	2.96
	87914-2633	-----	-----	-----	26	----	3	33.02	30.48	13.38	6.09	5.00
	87914-2614	-----	-----	-----	26	----	4	33.02	30.48	10.92	5.84	2.79
	87914-2624	-----	-----	-----	26	----	4	33.02	30.48	12.25	7.00	2.96
	87914-2634	-----	-----	-----	26	----	4	33.02	30.48	13.38	6.09	5.00
D	87914-2615	-----	-----	-----	26	----	5	33.02	30.48	10.92	5.84	2.79
	87914-2625	-----	-----	-----	26	----	5	33.02	30.48	12.25	7.00	2.96
	87914-2635	-----	-----	-----	26	----	5	33.02	30.48	13.38	6.09	5.00
	87914-2616	-----	-----	-----	26	----	6	33.02	30.48	10.92	5.84	2.79
	87914-2626	-----	-----	-----	26	----	6	33.02	30.48	12.25	7.00	2.96
	87914-2636	-----	-----	-----	26	----	6	33.02	30.48	13.38	6.09	5.00
C												
B												

SEE SHEET 14 IEC NO: S2015-1512 DRW: N/PRAMAKRI SHINA 2015/06/25 CHKD: ATSEE 2015/06/25 APPR: KPRASAD 2015/07/15	QUALITY SYMBOLS $\nabla_F = 0$ $\nabla_F = 0$ $\nabla_F = 0$	GENERAL TOLERANCES (UNLESS SPECIFIED)		DIMENSION STYLE MM ONLY		SCALE NTS	DESIGN UNITS METRIC	THIRD ANGLE PROJECTION				
				mm	INCH	DRAWN BY KCHO	DATE 2004/11/05	TITLE 2.54MM PITCH DUAL ROW HEADER SINGLE WAFER, T/H				
		4 PLACES	\pm ---	\pm ---	3 PLACES	\pm ---	CHECKED BY PTLIM	DATE 2004/12/08	molex DOCUMENT NO. SD-87914-013 SHEET NO. 18 OF 45			
		2 PLACES	\pm 0.20	\pm ---	1 PLACE	\pm ---	\pm ---	APPROVED BY MLONG				
0 PLACE	\pm	\pm	ANGULAR $\pm 3^\circ$		MATERIAL NO.		SEE TABLE					
DRAFT WHERE APPLICABLE MUST REMAIN WITHIN DIMENSIONS				SIZE A3		THIS DRAWING CONTAINS INFORMATION THAT IS PROPRIETARY TO MOLEX INCORPORATED AND SHOULD NOT BE USED WITHOUT WRITTEN PERMISSION						

	10	9	8	7	6	5	4	3	2	1				
	PART NO FOR TRAY PACKAGING	PART NO. FOR TUBE WITHOUT CAP PACKAGING	PART NO. FOR TUBE WITH CAP PACKAGING	PART NO. FOR TAPE & REEL WITHOUT CAP PACKAGING	PART NO. FOR TAPE & REEL WITH CAP PACKAGING	CKT SIZE	VOID POSITION	PLATING TYPE	DIMENSION					
								A	B	F	M	P		
F	87914-2811	-----	-----	-----	-----	28	----	1	35.56	33.02	10.92	5.84	2.79	F
	87914-2821	-----	-----	-----	-----	28	----	1	35.56	33.02	12.25	7.00	2.96	
	87914-2831	-----	-----	-----	-----	28	----	1	35.56	33.02	13.38	6.09	5.00	
	87914-2812	-----	-----	-----	-----	28	----	2	35.56	33.02	10.92	5.84	2.79	
	87914-2822	-----	-----	-----	-----	28	----	2	35.56	33.02	12.25	7.00	2.96	
	87914-2832	-----	-----	-----	-----	28	----	2	35.56	33.02	13.38	6.09	5.00	
E	87914-2813	-----	-----	-----	-----	28	----	3	35.56	33.02	10.92	5.84	2.79	E
	87914-2823	-----	-----	-----	-----	28	----	3	35.56	33.02	12.25	7.00	2.96	
	87914-2833	-----	-----	-----	-----	28	----	3	35.56	33.02	13.38	6.09	5.00	
	87914-2814	-----	-----	-----	-----	28	----	4	35.56	33.02	10.92	5.84	2.79	
	87914-2824	-----	-----	-----	-----	28	----	4	35.56	33.02	12.25	7.00	2.96	
	87914-2834	-----	-----	-----	-----	28	----	4	35.56	33.02	13.38	6.09	5.00	
D	87914-2815	-----	-----	-----	-----	28	----	5	35.56	33.02	10.92	5.84	2.79	D
	87914-2825	-----	-----	-----	-----	28	----	5	35.56	33.02	12.25	7.00	2.96	
	87914-2835	-----	-----	-----	-----	28	----	5	35.56	33.02	13.38	6.09	5.00	
	87914-2816	-----	-----	-----	-----	28	----	6	35.56	33.02	10.92	5.84	2.79	
	87914-2826	-----	-----	-----	-----	28	----	6	35.56	33.02	12.25	7.00	2.96	
	87914-2836	-----	-----	-----	-----	28	----	6	35.56	33.02	13.38	6.09	5.00	
C														C
B														B

SEE SHEET 14 IEC NO: S2015-1512 DRW: N/PRAMAKRI SHINA 2015/06/25 CHKD: ATSEE 2015/06/25 APPR: KPRASAD 2015/07/15	QUALITY SYMBOLS $\nabla_F = 0$ $\nabla_E = 0$ $\nabla_P = 0$	GENERAL TOLERANCES (UNLESS SPECIFIED)		DIMENSION STYLE MM ONLY		SCALE NTS	DESIGN UNITS METRIC	THIRD ANGLE PROJECTION			
				mm	INCH	DRAWN BY KCHO	DATE 2004/11/05	TITLE 2.54MM PITCH DUAL ROW HEADER SINGLE WAFER, T/H			
		4 PLACES	\pm ---	\pm ---	CHECKED BY PTLIM	DATE 2004/12/08					
		3 PLACES	\pm ---	\pm ---	APPROVED BY MLONG	DATE 2010/09/06	MATERIAL NO.	DOCUMENT NO.	molex SD-87914-013 SHEET NO. 19 OF 45		
2 PLACES	\pm 0.20	\pm ---	DRAFT WHERE APPLICABLE MUST REMAIN WITHIN DIMENSIONS		SIZE A3	THIS DRAWING CONTAINS INFORMATION THAT IS PROPRIETARY TO MOLEX INCORPORATED AND SHOULD NOT BE USED WITHOUT WRITTEN PERMISSION					

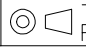

F	PART NO FOR TRAY PACKAGING	PART NO. FOR TUBE WITHOUT CAP PACKAGING	PART NO. FOR TUBE WITH CAP PACKAGING	PART NO. FOR TAPE & REEL WITHOUT CAP PACKAGING	PART NO. FOR TAPE & REEL WITH CAP PACKAGING	CKT SIZE	VOID POSITION	PLATING TYPE	DIMENSION				
									A	B	F	M	P
	87914-3011	-----	-----	-----	-----	30	----	1	38.10	35.56	10.92	5.84	2.79
	87914-3021	-----	-----	-----	-----	30	----	1	38.10	35.56	12.25	7.00	2.96
	87914-3031	-----	-----	-----	-----	30	----	1	38.10	35.56	13.38	6.09	5.00
	87914-3012	-----	-----	-----	-----	30	----	2	38.10	35.56	10.92	5.84	2.79
	87914-3022	-----	-----	-----	-----	30	----	2	38.10	35.56	12.25	7.00	2.96
	87914-3032	-----	-----	-----	-----	30	----	2	38.10	35.56	13.38	6.09	5.00
E	87914-3013	-----	-----	-----	-----	30	----	3	38.10	35.56	10.92	5.84	2.79
	87914-3023	-----	-----	-----	-----	30	----	3	38.10	35.56	12.25	7.00	2.96
	87914-3033	-----	-----	-----	-----	30	----	3	38.10	35.56	13.38	6.09	5.00
	87914-3014	-----	-----	-----	-----	30	----	4	38.10	35.56	10.92	5.84	2.79
	87914-3024	-----	-----	-----	-----	30	----	4	38.10	35.56	12.25	7.00	2.96
	87914-3034	-----	-----	-----	-----	30	----	4	38.10	35.56	13.38	6.09	5.00
D	87914-3015	-----	-----	-----	-----	30	----	5	38.10	35.56	10.92	5.84	2.79
	87914-3025	-----	-----	-----	-----	30	----	5	38.10	35.56	12.25	7.00	2.96
	87914-3035	-----	-----	-----	-----	30	----	5	38.10	35.56	13.38	6.09	5.00
	87914-3016	-----	-----	-----	-----	30	----	6	38.10	35.56	10.92	5.84	2.79
	87914-3026	-----	-----	-----	-----	30	----	6	38.10	35.56	12.25	7.00	2.96
	87914-3036	-----	-----	-----	-----	30	----	6	38.10	35.56	13.38	6.09	5.00
C													
B													

SEE SHEET 14	IEC NO: S2015-1512	DRAWN:RAMAKRISHNA 2015/06/25	CHKD:ATSEE 2015/06/25	APPR:KPRASAD 2015/07/15	DESCRIPTION	QUALITY SYMBOLS	GENERAL TOLERANCES (UNLESS SPECIFIED)		DIMENSION STYLE MM ONLY		SCALE NTS	DESIGN UNITS METRIC	THIRD ANGLE PROJECTION	
							4 PLACES	mm	INCH	DRAWN BY KCHO	DATE 2004/11/05	TITLE 2.54MM PITCH DUAL ROW HEADER SINGLE WAFER, T/H		
						$\nabla = 0$	3 PLACES	\pm ---	\pm ---	CHECKED BY PTLIM	DATE 2004/12/08			
$\nabla = 0$	2 PLACES	± 0.20	\pm ---	APPROVED BY	DATE									
$\nabla = 0$	1 PLACE	\pm ---	\pm ---	MLONG	2010/09/06	MATERIAL NO.			DOCUMENT NO.					
	0 PLACE	\pm	\pm	ANGULAR $\pm 3^\circ$		DRAFT WHERE APPLICABLE MUST REMAIN WITHIN DIMENSIONS		SEE TABLE		SD-87914-013				
								SIZE A3	THIS DRAWING CONTAINS INFORMATION THAT IS PROPRIETARY TO MOLEX INCORPORATED AND SHOULD NOT BE USED WITHOUT WRITTEN PERMISSION					

	10		9		8		7		6		5		4		3		2		1	
	PART NO FOR TRAY PACKAGING	PART NO. FOR TUBE WITHOUT CAP PACKAGING	PART NO. FOR TUBE WITH CAP PACKAGING	PART NO. FOR TAPE & REEL WITHOUT CAP PACKAGING	PART NO. FOR TAPE & REEL WITH CAP PACKAGING	CKT SIZE	VOID POSITION	PLATING TYPE	DIMENSION											
									A	B	F	M	P							
F	87914-3211	-----	-----	-----	-----	32	----	1	40.64	38.10	10.92	5.84	2.79							
	87914-3221	-----	-----	-----	-----	32	----	1	40.64	38.10	12.25	7.00	2.96							
	87914-3231	-----	-----	-----	-----	32	----	1	40.64	38.10	13.38	6.09	5.00							
	87914-3212	-----	-----	-----	-----	32	----	2	40.64	38.10	10.92	5.84	2.79							
	87914-3222	-----	-----	-----	-----	32	----	2	40.64	38.10	12.25	7.00	2.96							
	87914-3232	-----	-----	-----	-----	32	----	2	40.64	38.10	13.38	6.09	5.00							
E	87914-3213	-----	-----	-----	-----	32	----	3	40.64	38.10	10.92	5.84	2.79							
	87914-3223	-----	-----	-----	-----	32	----	3	40.64	38.10	12.25	7.00	2.96							
	87914-3233	-----	-----	-----	-----	32	----	3	40.64	38.10	13.38	6.09	5.00							
	87914-3214	-----	-----	-----	-----	32	----	4	40.64	38.10	10.92	5.84	2.79							
	87914-3224	-----	-----	-----	-----	32	----	4	40.64	38.10	12.25	7.00	2.96							
	87914-3234	-----	-----	-----	-----	32	----	4	40.64	38.10	13.38	6.09	5.00							
D	87914-3215	-----	-----	-----	-----	32	----	5	40.64	38.10	10.92	5.84	2.79							
	87914-3225	-----	-----	-----	-----	32	----	5	40.64	38.10	12.25	7.00	2.96							
	87914-3235	-----	-----	-----	-----	32	----	5	40.64	38.10	13.38	6.09	5.00							
	87914-3216	-----	-----	-----	-----	32	----	6	40.64	38.10	10.92	5.84	2.79							
	87914-3226	-----	-----	-----	-----	32	----	6	40.64	38.10	12.25	7.00	2.96							
	87914-3236	-----	-----	-----	-----	32	----	6	40.64	38.10	13.38	6.09	5.00							
C																				
B																				

SEE SHEET 14 EC NO: S2015-1512 DRW:MPRAMAKRI SHINA 2015/06/25 CHKD:ATSEE 2015/06/25 APPR:KPRASAD 2015/07/15	QUALITY SYMBOLS ▽=0 ▽=0 ▽=0	GENERAL TOLERANCES (UNLESS SPECIFIED)	DIMENSION STYLE MM ONLY	SCALE NTS	DESIGN UNITS METRIC	THIRD ANGLE PROJECTION
		4 PLACES ± --- ± ---	mm INCH	DRAWN BY KCHO	DATE 2004/11/05	TITLE 2.54MM PITCH DUAL ROW HEADER SINGLE WAFER, T/H
		3 PLACES ± --- ± ---	2 PLACES ± 0.20 ± ---	CHECKED BY PTLIM	DATE 2004/12/08	molex
		1 PLACE ± --- ± ---	0 PLACE ± ±	APPROVED BY MLONG	DATE 2010/09/06	
ANGULAR ± 3 °		DRAFT WHERE APPLICABLE MUST REMAIN WITHIN DIMENSIONS		MATERIAL NO. SEE TABLE		DOCUMENT NO. SD-87914-013
SIZE A3		THIS DRAWING CONTAINS INFORMATION THAT IS PROPRIETARY TO MOLEX INCORPORATED AND SHOULD NOT BE USED WITHOUT WRITTEN PERMISSION				

	10	9	8	7	6	5	4	3	2	1				
	PART NO. FOR TRAY PACKAGING	PART NO. FOR TUBE WITHOUT CAP PACKAGING	PART NO. FOR TUBE WITH CAP PACKAGING	PART NO. FOR TAPE & REEL WITHOUT CAP PACKAGING	PART NO. FOR TAPE & REEL WITH CAP PACKAGING	CKT SIZE	VOID POSITION	PLATING TYPE	DIMENSION					
	A	B	F	M	D									
F	87914-3411	-----	-----	-----	-----	34	-----	1	43.18	40.64	10.92	5.84	2.79	F
	87914-3421	-----	-----	-----	-----	34	-----	1	43.18	40.64	12.25	7.00	2.96	
	87914-3431	-----	-----	-----	-----	34	-----	1	43.18	40.64	13.38	6.09	5.00	
	87914-3412	-----	-----	-----	-----	34	-----	2	43.18	40.64	10.92	5.84	2.79	
	87914-3422	-----	-----	-----	-----	34	-----	2	43.18	40.64	12.25	7.00	2.96	
	87914-3432	-----	-----	-----	-----	34	-----	2	43.18	40.64	13.38	6.09	5.00	
E	87914-3413	-----	-----	-----	-----	34	-----	3	43.18	40.64	10.92	5.84	2.79	E
	87914-3423	-----	-----	-----	-----	34	-----	3	43.18	40.64	12.25	7.00	2.96	
	87914-3433	-----	-----	-----	-----	34	-----	3	43.18	40.64	13.38	6.09	5.00	
	87914-3414	-----	-----	-----	-----	34	-----	4	43.18	40.64	10.92	5.84	2.79	
	87914-3424	-----	-----	-----	-----	34	-----	4	43.18	40.64	12.25	7.00	2.96	
	87914-3434	-----	-----	-----	-----	34	-----	4	43.18	40.64	13.38	6.09	5.00	
D	87914-3415	-----	-----	-----	-----	34	-----	5	43.18	40.64	10.92	5.84	2.79	D
	87914-3425	-----	-----	-----	-----	34	-----	5	43.18	40.64	12.25	7.00	2.96	
	87914-3435	-----	-----	-----	-----	34	-----	5	43.18	40.64	13.38	6.09	5.00	
	87914-3416	-----	-----	-----	-----	34	-----	6	43.18	40.64	10.92	5.84	2.79	
	87914-3426	-----	-----	-----	-----	34	-----	6	43.18	40.64	12.25	7.00	2.96	
	87914-3436	-----	-----	-----	-----	34	-----	6	43.18	40.64	13.38	6.09	5.00	
C														C
B														B

SEE SHEET 14 IEC NO: S2015-1512 DRW:MPRAKRI SHNA 2015/06/25 CHKD:ATSEE 2015/06/25 APPR:KPRASAD 2015/07/15	QUALITY SYMBOLS $\nabla_F = 0$ $\nabla_F = 0$ $\nabla_F = 0$	GENERAL TOLERANCES (UNLESS SPECIFIED)		DIMENSION STYLE MM ONLY		SCALE NTS	DESIGN UNITS METRIC	 THIRD ANGLE PROJECTION		
						DRAWN BY KCHO	DATE 2004/11/05		TITLE 2.54MM PITCH DUAL ROW HEADER SINGLE WAFER, T/H	
						3 PLACES \pm ---		CHECKED BY PTLIM	DATE 2004/12/08	
						2 PLACES \pm 0.20		APPROVED BY	DATE 2010/09/06	
						1 PLACE \pm ---		MATERIAL NO.	DOCUMENT NO. SD-87914-013	
						0 PLACE \pm		SHEET NO. 22 OF 45		
DRAFT WHERE APPLICABLE MUST REMAIN WITHIN DIMENSIONS				SEE TABLE		THIS DRAWING CONTAINS INFORMATION THAT IS PROPRIETARY TO MOLEX INCORPORATED AND SHOULD NOT BE USED WITHOUT WRITTEN PERMISSION				

	9	8	7	6	5	4	3	2	1
--	---	---	---	---	---	---	---	---	---

	10	9	8	7	6	5	4	3	2	1				
	PART NO FOR TRAY PACKAGING	PART NO. FOR TUBE WITHOUT CAP PACKAGING	PART NO. FOR TUBE WITH CAP PACKAGING	PART NO. FOR TAPE & REEL WITHOUT CAP PACKAGING	PART NO. FOR TAPE & REEL WITH CAP PACKAGING	CKT SIZE	VOID POSITION	PLATING TYPE	DIMENSION					
								A	B	F	M	P		
F	87914-3611	-----	-----	-----	-----	36	----	1	45.72	43.18	10.92	5.84	2.79	F
	87914-3621	-----	-----	-----	-----	36	----	1	45.72	43.18	12.25	7.00	2.96	
	87914-3631	-----	-----	-----	-----	36	----	1	45.72	43.18	13.38	6.09	5.00	
	87914-3612	-----	-----	-----	-----	36	----	2	45.72	43.18	10.92	5.84	2.79	
	87914-3622	-----	-----	-----	-----	36	----	2	45.72	43.18	12.25	7.00	2.96	
	87914-3632	-----	-----	-----	-----	36	----	2	45.72	43.18	13.38	6.09	5.00	
E	87914-3613	-----	-----	-----	-----	36	----	3	45.72	43.18	10.92	5.84	2.79	E
	87914-3623	-----	-----	-----	-----	36	----	3	45.72	43.18	12.25	7.00	2.96	
	87914-3633	-----	-----	-----	-----	36	----	3	45.72	43.18	13.38	6.09	5.00	
	87914-3614	-----	-----	-----	-----	36	----	4	45.72	43.18	10.92	5.84	2.79	
	87914-3624	-----	-----	-----	-----	36	----	4	45.72	43.18	12.25	7.00	2.96	
	87914-3634	-----	-----	-----	-----	36	----	4	45.72	43.18	13.38	6.09	5.00	
D	87914-3615	-----	-----	-----	-----	36	----	5	45.72	43.18	10.92	5.84	2.79	D
	87914-3625	-----	-----	-----	-----	36	----	5	45.72	43.18	12.25	7.00	2.96	
	87914-3635	-----	-----	-----	-----	36	----	5	45.72	43.18	13.38	6.09	5.00	
	87914-3616	-----	-----	-----	-----	36	----	6	45.72	43.18	10.92	5.84	2.79	
	87914-3626	-----	-----	-----	-----	36	----	6	45.72	43.18	12.25	7.00	2.96	
	87914-3636	-----	-----	-----	-----	36	----	6	45.72	43.18	13.38	6.09	5.00	
C	87914-3637	-----	-----	-----	-----	36	----	6	45.72	43.18	12.10	7.01	2.60	C
B														B

<p>SEE SHEET 14</p> <p>IEC NO: S2015-1512</p> <p>DRW:N/PRAMAKRI SHINA 2015/06/25</p> <p>CHKD:ATSEE 2015/06/25</p> <p>APPR:KPRASAD 2015/07/15</p> <p>D15</p>	<p>QUALITY SYMBOLS</p> <p>$\nabla_{\square} = 0$</p> <p>$\nabla_{\square} = 0$</p> <p>$\nabla_{\square} = 0$</p>	GENERAL TOLERANCES (UNLESS SPECIFIED)		DIMENSION STYLE MM ONLY		SCALE NTS	DESIGN UNITS METRIC	THIRD ANGLE PROJECTION		
		4 PLACES	± ---	± ---	DRAWN BY KCHO	DATE 2004/11/05	TITLE 2.54MM PITCH DUAL ROW HEADER SINGLE WAFER, T/H			
		3 PLACES	± ---	± ---	CHECKED BY PTLIM	DATE 2004/12/08				
		2 PLACES	± 0.20	± ---	APPROVED BY	DATE	MATERIAL NO. MLONG		DOCUMENT NO. SD-87914-013	
1 PLACE	± ---	± ---	2010/09/06							
0 PLACE	±	±	ANGULAR ± 3 °		SEE TABLE					
DRAFT WHERE APPLICABLE MUST REMAIN WITHIN DIMENSIONS			THIS DRAWING CONTAINS INFORMATION THAT IS PROPRIETARY TO MOLEX INCORPORATED AND SHOULD NOT BE USED WITHOUT WRITTEN PERMISSION							

	10	9	8	7	6	5	4	3	2	1				
	PART NO. FOR TRAY PACKAGING	PART NO. FOR TUBE WITHOUT CAP PACKAGING	PART NO. FOR TUBE WITH CAP PACKAGING	PART NO. FOR TAPE & REEL WITHOUT CAP PACKAGING	PART NO. FOR TAPE & REEL WITH CAP PACKAGING	CKT SIZE	VOID POSITION	PLATING TYPE	DIMENSION					
								A	B	F	M	P		
F	87914-3811	-----	-----	-----	-----	38	----	1	48.26	45.72	10.92	5.84	2.79	F
	87914-3821	-----	-----	-----	-----	38	----	1	48.26	45.72	12.25	7.00	2.96	
	87914-3831	-----	-----	-----	-----	38	----	1	48.26	45.72	13.38	6.09	5.00	
	87914-3812	-----	-----	-----	-----	38	----	2	48.26	45.72	10.92	5.84	2.79	
	87914-3822	-----	-----	-----	-----	38	----	2	48.26	45.72	12.25	7.00	2.96	
	87914-3832	-----	-----	-----	-----	38	----	2	48.26	45.72	13.38	6.09	5.00	
E	87914-3813	-----	-----	-----	-----	38	----	3	48.26	45.72	10.92	5.84	2.79	E
	87914-3823	-----	-----	-----	-----	38	----	3	48.26	45.72	12.25	7.00	2.96	
	87914-3833	-----	-----	-----	-----	38	----	3	48.26	45.72	13.38	6.09	5.00	
	87914-3814	-----	-----	-----	-----	38	----	4	48.26	45.72	10.92	5.84	2.79	
	87914-3824	-----	-----	-----	-----	38	----	4	48.26	45.72	12.25	7.00	2.96	
	87914-3834	-----	-----	-----	-----	38	----	4	48.26	45.72	13.38	6.09	5.00	
D	87914-3815	-----	-----	-----	-----	38	----	5	48.26	45.72	10.92	5.84	2.79	D
	87914-3825	-----	-----	-----	-----	38	----	5	48.26	45.72	12.25	7.00	2.96	
	87914-3835	-----	-----	-----	-----	38	----	5	48.26	45.72	13.38	6.09	5.00	
	87914-3816	-----	-----	-----	-----	38	----	6	48.26	45.72	10.92	5.84	2.79	
	87914-3826	-----	-----	-----	-----	38	----	6	48.26	45.72	12.25	7.00	2.96	
	87914-3836	-----	-----	-----	-----	38	----	6	48.26	45.72	13.38	6.09	5.00	
C														C
B														B

SEE SHEET 14 IEC NO: S2015-1512 DRW:MRAMAKRI SHINA 2015/06/25 CHKD:ATSEE 2015/06/25 APPR:KPRASAD 2015/07/15	QUALITY SYMBOLS 	GENERAL TOLERANCES (UNLESS SPECIFIED)		DIMENSION STYLE MM ONLY		SCALE NTS	DESIGN UNITS METRIC	THIRD ANGLE PROJECTION			
				mm	INCH	DRAWN BY KCHO	DATE 2004/11/05	TITLE 2.54MM PITCH DUAL ROW HEADER SINGLE WAFER, T/H			
		4 PLACES	± ---	± ---		CHECKED BY PTLIM	DATE 2004/12/08				
		3 PLACES	± ---	± ---		APPROVED BY MLONG	DATE 2010/09/06				
2 PLACES	± 0.20	± ---		MATERIAL NO.		DOCUMENT NO.		SHEET NO.			
1 PLACE	± ---	± ---		SEE TABLE		SD-87914-013		24 OF 45			
0 PLACE	±	±		DRAFT WHERE APPLICABLE MUST REMAIN WITHIN DIMENSIONS		THIS DRAWING CONTAINS INFORMATION THAT IS PROPRIETARY TO MOLEX INCORPORATED AND SHOULD NOT BE USED WITHOUT WRITTEN PERMISSION					

PART NO FOR TRAY PACKAGING	PART NO. FOR TUBE WITHOUT CAP PACKAGING	PART NO. FOR TUBE WITH CAP PACKAGING	PART NO. FOR TAPE & REEL WITHOUT CAP PACKAGING	PART NO. FOR TAPE & REEL WITH CAP PACKAGING	CKT SIZE	VOID POSITION	PLATING TYPE	DIMENSION				
								A	B	F	M	P
								F	87914-4011	-----	-----	-----
	87914-4021	-----	-----	-----	40	----	1	50.80	48.26	12.25	7.00	2.96
	87914-4031	-----	-----	-----	40	----	1	50.80	48.26	13.38	6.09	5.00
	87914-4012	-----	-----	-----	40	----	2	50.80	48.26	10.92	5.84	2.79
	87914-4022	-----	-----	-----	40	----	2	50.80	48.26	12.25	7.00	2.96
	87914-4032	-----	-----	-----	40	----	2	50.80	48.26	13.38	6.09	5.00
E	87914-4013	-----	-----	-----	40	----	3	50.80	48.26	10.92	5.84	2.79
	87914-4023	-----	-----	-----	40	----	3	50.80	48.26	12.25	7.00	2.96
	87914-4033	-----	-----	-----	40	----	3	50.80	48.26	13.38	6.09	5.00
	87914-4014	-----	-----	-----	40	----	4	50.80	48.26	10.92	5.84	2.79
	87914-4024	-----	-----	-----	40	----	4	50.80	48.26	12.25	7.00	2.96
	87914-4034	-----	-----	-----	40	----	4	50.80	48.26	13.38	6.09	5.00
D	87914-4015	-----	-----	-----	40	----	5	50.80	48.26	10.92	5.84	2.79
	87914-4025	-----	-----	-----	40	----	5	50.80	48.26	12.25	7.00	2.96
	87914-4035	-----	-----	-----	40	----	5	50.80	48.26	13.38	6.09	5.00
	87914-4016	-----	-----	-----	40	----	6	50.80	48.26	10.92	5.84	2.79
	87914-4026	-----	-----	-----	40	----	6	50.80	48.26	12.25	7.00	2.96
	87914-4036	-----	-----	-----	40	----	6	50.80	48.26	13.38	6.09	5.00
C												
B												

SEE SHEET 14 IEC NO: S2015-1512 DRW:MPRAMAKRI SHINA 2015/06/25 CHKD:ATSEE 2015/06/25 APPR:KPRASAD 2015/07/15	QUALITY SYMBOLS $\nabla_F = 0$ $\nabla_F = 0$ $\nabla_F = 0$	GENERAL TOLERANCES (UNLESS SPECIFIED)		DIMENSION STYLE MM ONLY		SCALE NTS	DESIGN UNITS METRIC	THIRD ANGLE PROJECTION			
				mm	INCH	DRAWN BY KCHO	DATE 2004/11/05	TITLE 2.54MM PITCH DUAL ROW HEADER SINGLE WAFER, T/H			
		4 PLACES	± ---	± ---	CHECKED BY PTLIM	DATE 2004/12/08					
		3 PLACES	± ---	± ---	APPROVED BY	DATE	MATERIAL NO. MLONG		DOCUMENT NO. SD-87914-013		SHEET NO. 25 OF 45
2 PLACES	± 0.20	± ---	DATE 2010/09/06								
1 PLACE	± ---	± ---	ANGULAR ± 3 °		SEE TABLE		THIS DRAWING CONTAINS INFORMATION THAT IS PROPRIETARY TO MOLEX INCORPORATED AND SHOULD NOT BE USED WITHOUT WRITTEN PERMISSION				
0 PLACE	±	±	DRAFT WHERE APPLICABLE MUST REMAIN WITHIN DIMENSIONS		SIZE A3						

PART NO FOR TRAY PACKAGING	PART NO. FOR TUBE WITHOUT CAP PACKAGING	PART NO. FOR TUBE WITH CAP PACKAGING	PART NO. FOR TAPE & REEL WITHOUT CAP PACKAGING	PART NO. FOR TAPE & REEL WITH CAP PACKAGING	CKT SIZE	VOID POSITION	PLATING TYPE	DIMENSION				
								A	B	F	M	P
F	87914-4211	-----	-----	-----	42	----	1	53.34	50.80	10.92	5.84	2.79
	87914-4221	-----	-----	-----	42	----	1	53.34	50.80	12.25	7.00	2.96
	87914-4212	-----	-----	-----	42	----	2	53.34	50.80	10.92	5.84	2.79
	87914-4222	-----	-----	-----	42	----	2	53.34	50.80	12.25	7.00	2.96
	87914-4213	-----	-----	-----	42	----	3	53.34	50.80	10.92	5.84	2.79
	87914-4223	-----	-----	-----	42	----	3	53.34	50.80	12.25	7.00	2.96
E	87914-4214	-----	-----	-----	42	----	4	53.34	50.80	10.92	5.84	2.79
	87914-4224	-----	-----	-----	42	----	4	53.34	50.80	12.25	7.00	2.96
	87914-4215	-----	-----	-----	42	----	5	53.34	50.80	10.92	5.84	2.79
	87914-4225	-----	-----	-----	42	----	5	53.34	50.80	12.25	7.00	2.96
	87914-4216	-----	-----	-----	42	----	6	53.34	50.80	10.92	5.84	2.79
	87914-4226	-----	-----	-----	42	----	6	53.34	50.80	12.25	7.00	2.96
D												
C												
B												

SEE SHEET 14 IEC NO: S2015-1512 DRW: N/RAJAKRI SHINA 2015/06/25 CHKD: ATSEE 2015/06/25 APPR: KPRASAD 2015/07/15	QUALITY SYMBOLS F=0 F=0 F=0	GENERAL TOLERANCES (UNLESS SPECIFIED)		DIMENSION STYLE MM ONLY		SCALE NTS	DESIGN UNITS METRIC	THIRD ANGLE PROJECTION	
				mm	INCH	DRAWN BY KCHO	DATE 2004/11/05		TITLE 2.54MM PITCH DUAL ROW HEADER SINGLE WAFER, T/H
		4 PLACES ± --- ± ---				CHECKED BY PTLIM	DATE 2004/12/08		
		3 PLACES ± --- ± ---				APPROVED BY MLONG	DATE 2010/09/06		
2 PLACES ± 0.20 ± ---				MATERIAL NO.		DOCUMENT NO. SD-87914-013	SHEET NO. 26 OF 45		
1 PLACE ± --- ± ---				DRAFT WHERE APPLICABLE MUST REMAIN WITHIN DIMENSIONS		THIS DRAWING CONTAINS INFORMATION THAT IS PROPRIETARY TO MOLEX INCORPORATED AND SHOULD NOT BE USED WITHOUT WRITTEN PERMISSION			
0 PLACE ± ±				SIZE A3					

	PART NO FOR TRAY PACKAGING	PART NO. FOR TUBE WITHOUT CAP PACKAGING	PART NO. FOR TUBE WITH CAP PACKAGING	PART NO. FOR TAPE & REEL WITHOUT CAP PACKAGING	PART NO. FOR TAPE & REEL WITH CAP PACKAGING	CKT SIZE	VOID POSITION	PLATING TYPE	DIMENSION				
									A	B	F	M	P
F	87914-4411	-----	-----	-----	-----	44	----	1	55.88	53.34	10.92	5.84	2.79
	87914-4421	-----	-----	-----	-----	44	----	1	55.88	53.34	12.25	7.00	2.96
	87914-4412	-----	-----	-----	-----	44	----	2	55.88	53.34	10.92	5.84	2.79
	87914-4422	-----	-----	-----	-----	44	----	2	55.88	53.34	12.25	7.00	2.96
	87914-4413	-----	-----	-----	-----	44	----	3	55.88	53.34	10.92	5.84	2.79
	87914-4423	-----	-----	-----	-----	44	----	3	55.88	53.34	12.25	7.00	2.96
E	87914-4414	-----	-----	-----	-----	44	----	4	55.88	53.34	10.92	5.84	2.79
	87914-4424	-----	-----	-----	-----	44	----	4	55.88	53.34	12.25	7.00	2.96
	87914-4415	-----	-----	-----	-----	44	----	5	55.88	53.34	10.92	5.84	2.79
	87914-4425	-----	-----	-----	-----	44	----	5	55.88	53.34	12.25	7.00	2.96
	87914-4416	-----	-----	-----	-----	44	----	6	55.88	53.34	10.92	5.84	2.79
	87914-4426	-----	-----	-----	-----	44	----	6	55.88	53.34	12.25	7.00	2.96
D													
C													
B													

SEE SHEET 14 IEC NO: S2015-1512 DRAWN: RANAKRI SHINA 2015/06/25 CHKD: ATSEE 2015/06/25 APPR: KPRASAD 2015/07/15	QUALITY SYMBOLS ▽=0 ▽=0 ▽=0	GENERAL TOLERANCES (UNLESS SPECIFIED)		DIMENSION STYLE MM ONLY		SCALE NTS	DESIGN UNITS METRIC	THIRD ANGLE PROJECTION
		4 PLACES	± ---	± ---	DRAWN BY KCHO	DATE 2004/11/05	TITLE 2.54MM PITCH DUAL ROW HEADER SINGLE WAFER, T/H molex	
		3 PLACES	± ---	± ---	CHECKED BY PTLIM	DATE 2004/12/08		
		2 PLACES	± 0.20	± ---	APPROVED BY MLONG	DATE 2010/09/06		
1 PLACE	± ---	± ---	MATERIAL NO.	DOCUMENT NO.				
		0 PLACE	±	±	SEE TABLE		SD-87914-013	SHEET NO. 27 OF 45
DRAFT WHERE APPLICABLE MUST REMAIN WITHIN DIMENSIONS		ANGULAR ± 3 °		THIS DRAWING CONTAINS INFORMATION THAT IS PROPRIETARY TO MOLEX INCORPORATED AND SHOULD NOT BE USED WITHOUT WRITTEN PERMISSION				

PART NO FOR TRAY PACKAGING	PART NO. FOR TUBE WITHOUT CAP PACKAGING	PART NO. FOR TUBE WITH CAP PACKAGING	PART NO. FOR TAPE & REEL WITHOUT CAP PACKAGING	PART NO. FOR TAPE & REEL WITH CAP PACKAGING	CKT SIZE	VOID POSITION	PLATING TYPE	DIMENSION				
								A	B	F	M	P
F	87914-4611	-----	-----	-----	46	----	1	58.42	55.88	10.92	5.84	2.79
	87914-4621	-----	-----	-----	46	----	1	58.42	55.88	12.25	7.00	2.96
	87914-4612	-----	-----	-----	46	----	2	58.42	55.88	10.92	5.84	2.79
	87914-4622	-----	-----	-----	46	----	2	58.42	55.88	12.25	7.00	2.96
	87914-4613	-----	-----	-----	46	----	3	58.42	55.88	10.92	5.84	2.79
	87914-4623	-----	-----	-----	46	----	3	58.42	55.88	12.25	7.00	2.96
E	87914-4614	-----	-----	-----	46	----	4	58.42	55.88	10.92	5.84	2.79
	87914-4624	-----	-----	-----	46	----	4	58.42	55.88	12.25	7.00	2.96
	87914-4615	-----	-----	-----	46	----	5	58.42	55.88	10.92	5.84	2.79
	87914-4625	-----	-----	-----	46	----	5	58.42	55.88	12.25	7.00	2.96
	87914-4616	-----	-----	-----	46	----	6	58.42	55.88	10.92	5.84	2.79
	87914-4626	-----	-----	-----	46	----	6	58.42	55.88	12.25	7.00	2.96
D												
C												
B												

SEE SHEET 14 IEC NO: S2015-1512 DRW: N/RAJAKRI SHINA 2015/06/25 CHKD: ATSEE 2015/06/25 APPR: KPRASAD 2015/07/15	QUALITY SYMBOLS F=0 F=0 F=0	GENERAL TOLERANCES (UNLESS SPECIFIED)		DIMENSION STYLE MM ONLY		SCALE NTS	DESIGN UNITS METRIC	THIRD ANGLE PROJECTION	
		4 PLACES ± --- ± --- 3 PLACES ± --- ± --- 2 PLACES ± 0.20 ± --- 1 PLACE ± --- ± --- 0 PLACE ± ±	mm INCH ± --- ± --- ± 0.20 ± --- ± --- ± --- ± ±	DRAWN BY KCHO	DATE 2004/11/05	TITLE 2.54MM PITCH DUAL ROW HEADER SINGLE WAFER, T/H			
		ANGULAR ± 3 °		CHECKED BY PTLIM	DATE 2004/12/08				
		DRAFT WHERE APPLICABLE MUST REMAIN WITHIN DIMENSIONS		APPROVED BY MLONG	DATE 2010/09/06	MATERIAL NO. SEE TABLE	DOCUMENT NO. SD-87914-013	SHEET NO. 28 OF 45	

PART NO FOR TRAY PACKAGING	PART NO. FOR TUBE WITHOUT CAP PACKAGING	PART NO. FOR TUBE WITH CAP PACKAGING	PART NO. FOR TAPE & REEL WITHOUT CAP PACKAGING	PART NO. FOR TAPE & REEL WITH CAP PACKAGING	CKT SIZE	VOID POSITION	PLATING TYPE	DIMENSION				
								A	B	F	M	P
F	87914-4811	-----	-----	-----	48	----	1	60.96	58.42	10.92	5.84	2.79
	87914-4821	-----	-----	-----	48	----	1	60.96	58.42	12.25	7.00	2.96
	87914-4812	-----	-----	-----	48	----	2	60.96	58.42	10.92	5.84	2.79
	87914-4822	-----	-----	-----	48	----	2	60.96	58.42	12.25	7.00	2.96
	87914-4813	-----	-----	-----	48	----	3	60.96	58.42	10.92	5.84	2.79
	87914-4823	-----	-----	-----	48	----	3	60.96	58.42	12.25	7.00	2.96
E	87914-4814	-----	-----	-----	48	----	4	60.96	58.42	10.92	5.84	2.79
	87914-4824	-----	-----	-----	48	----	4	60.96	58.42	12.25	7.00	2.96
	87914-4815	-----	-----	-----	48	----	5	60.96	58.42	10.92	5.84	2.79
	87914-4825	-----	-----	-----	48	----	5	60.96	58.42	12.25	7.00	2.96
	87914-4816	-----	-----	-----	48	----	6	60.96	58.42	10.92	5.84	2.79
	87914-4826	-----	-----	-----	48	----	6	60.96	58.42	12.25	7.00	2.96
D												
C												
B												

SEE SHEET 14 IEC NO: S2015-1512 DRW:RAMAKRISHNA 2015/06/25 CHKD:ATSEE 2015/06/25 APPR:KPRASAD 2015/07/15	QUALITY SYMBOLS	GENERAL TOLERANCES (UNLESS SPECIFIED)	DIMENSION STYLE	SCALE	DESIGN UNITS	THIRD ANGLE PROJECTION																		
	$\nabla_F = 0$ $\nabla_E = 0$ $\nabla_P = 0$	<table border="1"> <tr><th colspan="2">mm</th><th>INCH</th></tr> <tr><td>4 PLACES</td><td>± ---</td><td>± ---</td></tr> <tr><td>3 PLACES</td><td>± ---</td><td>± ---</td></tr> <tr><td>2 PLACES</td><td>± 0.20</td><td>± ---</td></tr> <tr><td>1 PLACE</td><td>± ---</td><td>± ---</td></tr> <tr><td>0 PLACE</td><td>±</td><td>±</td></tr> </table>	mm		INCH	4 PLACES	± ---	± ---	3 PLACES	± ---	± ---	2 PLACES	± 0.20	± ---	1 PLACE	± ---	± ---	0 PLACE	±	±	MM ONLY	NTS	METRIC	
	mm		INCH																					
	4 PLACES	± ---	± ---																					
3 PLACES	± ---	± ---																						
2 PLACES	± 0.20	± ---																						
1 PLACE	± ---	± ---																						
0 PLACE	±	±																						
DRAWN BY: KCHO DATE: 2004/11/05 CHECKED BY: PTLIM DATE: 2004/12/08 APPROVED BY: MLONG DATE: 2010/09/06	MATERIAL NO. SEE TABLE	TITLE 2.54MM PITCH DUAL ROW HEADER SINGLE WAFER, T/H DOCUMENT NO. SD-87914-013	SHEET NO. 29 OF 45																					
D15	DRAFT WHERE APPLICABLE MUST REMAIN WITHIN DIMENSIONS	THIS DRAWING CONTAINS INFORMATION THAT IS PROPRIETARY TO MOLEX INCORPORATED AND SHOULD NOT BE USED WITHOUT WRITTEN PERMISSION																						

F	DIMENSION										F			
	PART NO FOR TRAY PACKAGING	PART NO. FOR TUBE WITHOUT CAP PACKAGING	PART NO. FOR TUBE WITH CAP PACKAGING	PART NO. FOR TAPE & REEL WITHOUT CAP PACKAGING	PART NO. FOR TAPE & REEL WITH CAP PACKAGING	CKT SIZE	VOID POSITION	PLATING TYPE	A	B		F	M	P
														A
87914-5011	-----	-----	-----	-----	50	----	1	63.50	60.96	10.92	5.84	2.79		
87914-5021	-----	-----	-----	-----	50	----	1	63.50	60.96	12.25	7.00	2.96		
87914-5012	-----	-----	-----	-----	50	----	2	63.50	60.96	10.92	5.84	2.79		
87914-5022	-----	-----	-----	-----	50	----	2	63.50	60.96	12.25	7.00	2.96		
87914-5013	-----	-----	-----	-----	50	----	3	63.50	60.96	10.92	5.84	2.79		
87914-5023	-----	-----	-----	-----	50	----	3	63.50	60.96	12.25	7.00	2.96		
87914-5014	-----	-----	-----	-----	50	----	4	63.50	60.96	10.92	5.84	2.79		
87914-5024	-----	-----	-----	-----	50	----	4	63.50	60.96	12.25	7.00	2.96		
87914-5015	-----	-----	-----	-----	50	----	5	63.50	60.96	10.92	5.84	2.79		
87914-5025	-----	-----	-----	-----	50	----	5	63.50	60.96	12.25	7.00	2.96		
87914-5016	-----	-----	-----	-----	50	----	6	63.50	60.96	10.92	5.84	2.79		
87914-5026	-----	-----	-----	-----	50	----	6	63.50	60.96	12.25	7.00	2.96		
87914-0002	-----	-----	-----	-----	50	----	8	63.50	60.96	18.54	11.58	4.47		

SEE SHEET 14 IEC NO: S2015-1512 DRW:N/PRAMAKRI SHINA 2015/06/25 CHK:D/ATSEE 2015/06/25 APPR:K/PRASAD 2015/07/15	QUALITY SYMBOLS 	GENERAL TOLERANCES (UNLESS SPECIFIED)		DIMENSION STYLE MM ONLY		SCALE NTS	DESIGN UNITS METRIC	THIRD ANGLE PROJECTION						
				mm	INCH	DRAWN BY KCHO	DATE 2004/11/05	TITLE 2.54MM PITCH DUAL ROW HEADER SINGLE WAFER, T/H						
		4 PLACES	±---	±---	3 PLACES	±---	±---					CHECKED BY PTL IM	DATE 2004/12/08	
		2 PLACES	±0.20	±---	1 PLACE	±---	±---	APPROVED BY MLONG	DATE 2010/09/06	molex DOCUMENT NO. SD-87914-013 SHEET NO. 30 OF 45				
		0 PLACE	±	±	ANGULAR ± 3 °		MATERIAL NO.							
		DRAFT WHERE APPLICABLE MUST REMAIN WITHIN DIMENSIONS				SEE TABLE								
THIS DRAWING CONTAINS INFORMATION THAT IS PROPRIETARY TO MOLEX INCORPORATED AND SHOULD NOT BE USED WITHOUT WRITTEN PERMISSION														

	10	9	8	7	6	5	4	3	2	1			
	PART NO FOR BULK PACKAGING	PART NO. FOR TUBE WITHOUT CAP PACKAGING	PART NO. FOR TUBE WITH CAP PACKAGING	PART NO. FOR TAPE & REEL WITHOUT CAP PACKAGING	PART NO. FOR TAPE & REEL WITH CAP PACKAGING	CKT SIZE	VOID POSITION	PLATING TYPE	DIMENSION				
								A	B	F	M	P	
F	87914-5211	-----	-----	-----	-----	52	----	1	66.04	63.50	10.92	5.84	2.79
	87914-5221	-----	-----	-----	-----	52	----	1	66.04	63.50	12.25	7.00	2.96
	87914-5212	-----	-----	-----	-----	52	----	2	66.04	63.50	10.92	5.84	2.79
	87914-5222	-----	-----	-----	-----	52	----	2	66.04	63.50	12.25	7.00	2.96
	87914-5213	-----	-----	-----	-----	52	----	3	66.04	63.50	10.92	5.84	2.79
	87914-5223	-----	-----	-----	-----	52	----	3	66.04	63.50	12.25	7.00	2.96
E	87914-5214	-----	-----	-----	-----	52	----	4	66.04	63.50	10.92	5.84	2.79
	87914-5224	-----	-----	-----	-----	52	----	4	66.04	63.50	12.25	7.00	2.96
	87914-5215	-----	-----	-----	-----	52	----	5	66.04	63.50	10.92	5.84	2.79
	87914-5225	-----	-----	-----	-----	52	----	5	66.04	63.50	12.25	7.00	2.96
	87914-5216	-----	-----	-----	-----	52	----	6	66.04	63.50	10.92	5.84	2.79
	87914-5226	-----	-----	-----	-----	52	----	6	66.04	63.50	12.25	7.00	2.96
D													
C													
B													

SEE SHEET 14 IEC NO: S2015-1512 DRW: N/RAJAKRI SHINA 2015/06/25 CHKD: ATSEE 2015/06/25 APPR: KPRASAD 2015/07/15 REV DESCRIPTION	QUALITY SYMBOLS	GENERAL TOLERANCES (UNLESS SPECIFIED)	DIMENSION STYLE	SCALE	DESIGN UNITS	THIRD ANGLE PROJECTION																	
	$\nabla = 0$ $\nabla = 0$ $\nabla = 0$	<table border="1"> <tr> <th></th> <th>mm</th> <th>INCH</th> </tr> <tr> <td>4 PLACES</td> <td>± ---</td> <td>± ---</td> </tr> <tr> <td>3 PLACES</td> <td>± ---</td> <td>± ---</td> </tr> <tr> <td>2 PLACES</td> <td>± 0.20</td> <td>± ---</td> </tr> <tr> <td>1 PLACE</td> <td>± ---</td> <td>± ---</td> </tr> <tr> <td>0 PLACE</td> <td>±</td> <td>±</td> </tr> </table>		mm	INCH		4 PLACES	± ---	± ---	3 PLACES	± ---	± ---	2 PLACES	± 0.20	± ---	1 PLACE	± ---	± ---	0 PLACE	±	±	MM ONLY	NTS
		mm	INCH																				
	4 PLACES	± ---	± ---																				
3 PLACES	± ---	± ---																					
2 PLACES	± 0.20	± ---																					
1 PLACE	± ---	± ---																					
0 PLACE	±	±																					
	ANGULAR ± 3 °	DRAWN BY DATE	TITLE																				
D15	DRAFT WHERE APPLICABLE MUST REMAIN WITHIN DIMENSIONS	KCHO 2004/11/05 CHECKED BY DATE PTLIM 2004/12/08 APPROVED BY DATE MLONG 2010/09/06 MATERIAL NO.	2.54MM PITCH DUAL ROW HEADER SINGLE WAFER, T/H molex DOCUMENT NO.																				

	10	9	8	7	6	5	4	3	2	1			
	PART NO FOR BULK PACKAGING	PART NO. FOR TUBE WITHOUT CAP PACKAGING	PART NO. FOR TUBE WITH CAP PACKAGING	PART NO. FOR TAPE & REEL WITHOUT CAP PACKAGING	PART NO. FOR TAPE & REEL WITH CAP PACKAGING	CKT SIZE	VOID POSITION	PLATING TYPE	DIMENSION				
									A	B	F	M	P
F	87914-5411	-----	-----	-----	-----	54	----	1	68.58	66.04	10.92	5.84	2.79
	87914-5421	-----	-----	-----	-----	54	----	1	68.58	66.04	12.25	7.00	2.96
	87914-5412	-----	-----	-----	-----	54	----	2	68.58	66.04	10.92	5.84	2.79
	87914-5422	-----	-----	-----	-----	54	----	2	68.58	66.04	12.25	7.00	2.96
	87914-5413	-----	-----	-----	-----	54	----	3	68.58	66.04	10.92	5.84	2.79
	87914-5423	-----	-----	-----	-----	54	----	3	68.58	66.04	12.25	7.00	2.96
E	87914-5414	-----	-----	-----	-----	54	----	4	68.58	66.04	10.92	5.84	2.79
	87914-5424	-----	-----	-----	-----	54	----	4	68.58	66.04	12.25	7.00	2.96
	87914-5415	-----	-----	-----	-----	54	----	5	68.58	66.04	10.92	5.84	2.79
	87914-5425	-----	-----	-----	-----	54	----	5	68.58	66.04	12.25	7.00	2.96
	87914-5416	-----	-----	-----	-----	54	----	6	68.58	66.04	10.92	5.84	2.79
	87914-5426	-----	-----	-----	-----	54	----	6	68.58	66.04	12.25	7.00	2.96
D													
C													
B													

SEE SHEET 14 IEC NO: S2015-1512 DRAWN: RAMAKRISHNA 2015/06/25 CHKD: ATSEE 2015/06/25 APPR: KRASAD 2015/07/15	QUALITY SYMBOLS $\nabla_F = 0$ $\nabla_{\text{F}} = 0$ $\nabla_{\text{P}} = 0$	GENERAL TOLERANCES (UNLESS SPECIFIED)	DIMENSION STYLE	SCALE	DESIGN UNITS	THIRD ANGLE PROJECTION	
			MM ONLY	NTS	METRIC		
		4 PLACES ± --- ± ---	DRAWN BY	DATE	TITLE		
		3 PLACES ± --- ± ---	KCHO	2004/11/05	2.54MM PITCH DUAL ROW HEADER SINGLE WAFER, T/H		
		2 PLACES ± 0.20 ± ---	CHECKED BY	DATE	molex		
1 PLACE ± --- ± ---	PTLIM	2004/12/08					
0 PLACE ± ±	APPROVED BY	DATE					
	MLONG	2010/09/06	MATERIAL NO.	DOCUMENT NO.			
	ANGULAR ± 3 °			SD-87914-013			
	DRAFT WHERE APPLICABLE MUST REMAIN WITHIN DIMENSIONS	SEE TABLE				SHEET NO. 32 OF 45	
D15	REV	SIZE	THIS DRAWING CONTAINS INFORMATION THAT IS PROPRIETARY TO MOLEX INCORPORATED AND SHOULD NOT BE USED WITHOUT WRITTEN PERMISSION				

		10	9	8	7	6	5	4	3	2	1			
F	PART NO FOR BULK PACKAGING	PART NO. FOR TUBE WITHOUT CAP PACKAGING	PART NO. FOR TUBE WITH CAP PACKAGING	PART NO. FOR TAPE & REEL WITHOUT CAP PACKAGING	PART NO. FOR TAPE & REEL WITH CAP PACKAGING	CKT SIZE	VOID POSITION	PLATING TYPE	DIMENSION					F
									A	B	F	M	P	
	87914-5611	-----	-----	-----	-----	56	----	1	71.12	68.58	10.92	5.84	2.79	
	87914-5621	-----	-----	-----	-----	56	----	1	71.12	68.58	12.25	7.00	2.96	
	87914-5612	-----	-----	-----	-----	56	----	2	71.12	68.58	10.92	5.84	2.79	
	87914-5622	-----	-----	-----	-----	56	----	2	71.12	68.58	12.25	7.00	2.96	
	87914-5613	-----	-----	-----	-----	56	----	3	71.12	68.58	10.92	5.84	2.79	
	87914-5623	-----	-----	-----	-----	56	----	3	71.12	68.58	12.25	7.00	2.96	
E	87914-5614	-----	-----	-----	-----	56	----	4	71.12	68.58	10.92	5.84	2.79	E
	87914-5624	-----	-----	-----	-----	56	----	4	71.12	68.58	12.25	7.00	2.96	
	87914-5615	-----	-----	-----	-----	56	----	5	71.12	68.58	10.92	5.84	2.79	
	87914-5625	-----	-----	-----	-----	56	----	5	71.12	68.58	12.25	7.00	2.96	
	87914-5616	-----	-----	-----	-----	56	----	6	71.12	68.58	10.92	5.84	2.79	
	87914-5626	-----	-----	-----	-----	56	----	6	71.12	68.58	12.25	7.00	2.96	
D														D

SEE SHEET 14 IEC NO: S2015-1512 DRWN:RAMAKRISHNA 2015/06/25 CHKD:ATSEE 2015/06/25 APPR:KPRASAD 2015/07/15 REV	QUALITY SYMBOLS $\nabla \overline{F} = 0$ $\nabla \underline{F} = 0$ $\nabla \overline{P} = 0$	GENERAL TOLERANCES (UNLESS SPECIFIED)	DIMENSION STYLE MM ONLY	SCALE NTS	DESIGN UNITS METRIC	THIRD ANGLE PROJECTION	DRAWN BY KCHO DATE 2004/11/05 CHECKED BY PTLIM DATE 2004/12/08 APPROVED BY MLONG DATE 2010/09/06 MATERIAL NO. DOCUMENT NO. 2.54MM PITCH DUAL ROW HEADER SINGLE WAFER, T/H SD-87914-013 SHEET NO. 33 OF 45	
	4 PLACES ± --- ± --- 3 PLACES ± --- ± --- 2 PLACES ± 0.20 ± --- 1 PLACE ± --- ± --- 0 PLACE ± ±		mm INCH ± --- ± --- ± 0.20 ± --- ± --- ± --- ± ±	TITLE 2.54MM PITCH DUAL ROW HEADER SINGLE WAFER, T/H SD-87914-013		DRAFT WHERE APPLICABLE MUST REMAIN WITHIN DIMENSIONS		SEE TABLE THIS DRAWING CONTAINS INFORMATION THAT IS PROPRIETARY TO MOLEX INCORPORATED AND SHOULD NOT BE USED WITHOUT WRITTEN PERMISSION
	ANGULAR ± 3 °		SEE TABLE	SEE TABLE	SEE TABLE	SEE TABLE		
			SIZE A3					

F	10	9	8	7	6	5	4	3	2	1	F			
	PART NO FOR BULK PACKAGING	PART NO. FOR TUBE WITHOUT CAP PACKAGING	PART NO. FOR TUBE WITH CAP PACKAGING	PART NO. FOR TAPE & REEL WITHOUT CAP PACKAGING	PART NO. FOR TAPE & REEL WITH CAP PACKAGING	CKT SIZE	VOID POSITION	PLATING TYPE	DIMENSION					
									A	B		F	M	P
	87914-5811	-----	-----	-----	-----	58	----	1	73.66	71.12	10.92	5.84	2.79	
	87914-5821	-----	-----	-----	-----	58	----	1	73.66	71.12	12.25	7.00	2.96	
	87914-5812	-----	-----	-----	-----	58	----	2	73.66	71.12	10.92	5.84	2.79	
	87914-5822	-----	-----	-----	-----	58	----	2	73.66	71.12	12.25	7.00	2.96	
	87914-5813	-----	-----	-----	-----	58	----	3	73.66	71.12	10.92	5.84	2.79	
	87914-5823	-----	-----	-----	-----	58	----	3	73.66	71.12	12.25	7.00	2.96	
E	87914-5814	-----	-----	-----	-----	58	----	4	73.66	71.12	10.92	5.84	2.79	
	87914-5824	-----	-----	-----	-----	58	----	4	73.66	71.12	12.25	7.00	2.96	
	87914-5815	-----	-----	-----	-----	58	----	5	73.66	71.12	10.92	5.84	2.79	
	87914-5825	-----	-----	-----	-----	58	----	5	73.66	71.12	12.25	7.00	2.96	
	87914-5816	-----	-----	-----	-----	58	----	6	73.66	71.12	10.92	5.84	2.79	
	87914-5826	-----	-----	-----	-----	58	----	6	73.66	71.12	12.25	7.00	2.96	
D														

SEE SHEET 14 IEC NO: S2015-1512 DRW:MRAMAKRI SHINA 2015/06/25 CHKD:ATSEE 2015/06/25 APPR:KPRASAD 2015/07/15	QUALITY SYMBOLS	GENERAL TOLERANCES (UNLESS SPECIFIED) 4 PLACES ± --- ± --- 3 PLACES ± --- ± --- 2 PLACES ± 0.20 ± --- 1 PLACE ± --- ± --- 0 PLACE ± ± ANGULAR ± 3 ° DRAFT WHERE APPLICABLE MUST REMAIN WITHIN DIMENSIONS	DIMENSION STYLE MM ONLY	SCALE NTS	DESIGN UNITS METRIC	THIRD ANGLE PROJECTION	TITLE 2.54MM PITCH DUAL ROW HEADER SINGLE WAFER, T/H molex	DOCUMENT NO. SD-87914-013	SHEET NO. 34 OF 45	
	$\nabla = 0$ $\nabla = 0$ $\nabla = 0$		mm INCH	DRAWN BY DATE KCHO 2004/11/05	CHECKED BY DATE PTLIM 2004/12/08					APPROVED BY DATE MLONG 2010/09/06
	SIZE A3		THIS DRAWING CONTAINS INFORMATION THAT IS PROPRIETARY TO MOLEX INCORPORATED AND SHOULD NOT BE USED WITHOUT WRITTEN PERMISSION							

F	PART NO FOR BULK PACKAGING	PART NO. FOR TUBE WITHOUT CAP PACKAGING	PART NO. FOR TUBE WITH CAP PACKAGING	PART NO. FOR TAPE & REEL WITHOUT CAP PACKAGING	PART NO. FOR TAPE & REEL WITH CAP PACKAGING	CKT SIZE	VOID POSITION	PLATING TYPE	DIMENSION				
									A	B	F	M	P
	87914-6011	-----	-----	-----	-----	60	----	1	76.20	73.66	10.92	5.84	2.79
	87914-6021	-----	-----	-----	-----	60	----	1	76.20	73.66	12.25	7.00	2.96
	87914-6012	-----	-----	-----	-----	60	----	2	76.20	73.66	10.92	5.84	2.79
	87914-6022	-----	-----	-----	-----	60	----	2	76.20	73.66	12.25	7.00	2.96
	87914-6013	-----	-----	-----	-----	60	----	3	76.20	73.66	10.92	5.84	2.79
	87914-6023	-----	-----	-----	-----	60	----	3	76.20	73.66	12.25	7.00	2.96
E	87914-6014	-----	-----	-----	-----	60	----	4	76.20	73.66	10.92	5.84	2.79
	87914-6024	-----	-----	-----	-----	60	----	4	76.20	73.66	12.25	7.00	2.96
	87914-6015	-----	-----	-----	-----	60	----	5	76.20	73.66	10.92	5.84	2.79
	87914-6025	-----	-----	-----	-----	60	----	5	76.20	73.66	12.25	7.00	2.96
	87914-6016	-----	-----	-----	-----	60	----	6	76.20	73.66	10.92	5.84	2.79
	87914-6026	-----	-----	-----	-----	60	----	6	76.20	73.66	12.25	7.00	2.96
D													

SEE SHEET 14 IEC NO: S2015-1512 DRW: N/RAJAKRI SHINA 2015/06/25 CHKD: ATSEE 2015/06/25 APPR: KPRASAD 2015/07/15	QUALITY SYMBOLS	GENERAL TOLERANCES (UNLESS SPECIFIED)	DIMENSION STYLE	SCALE	DESIGN UNITS	THIRD ANGLE PROJECTION	
	$\nabla = 0$ $\nabla = 0$ $\nabla = 0$	mm INCH 4 PLACES ± --- ± --- 3 PLACES ± --- ± --- 2 PLACES ± 0.20 ± --- 1 PLACE ± --- ± --- 0 PLACE ± ±	MM ONLY	NTS	METRIC		
		ANGULAR ± 3 °	DRAWN BY	DATE	TITLE		
		DRAFT WHERE APPLICABLE MUST REMAIN WITHIN DIMENSIONS	KCHO	2004/11/05	2.54MM PITCH DUAL ROW HEADER SINGLE WAFER, T/H		
			PTLIM	2004/12/08	molex		
			APPROVED BY	DATE	DOCUMENT NO.		
			MLONG	2010/09/06	SD-87914-013		
			SEE TABLE		SHEET NO. 35 OF 45		
			THIS DRAWING CONTAINS INFORMATION THAT IS PROPRIETARY TO MOLEX INCORPORATED AND SHOULD NOT BE USED WITHOUT WRITTEN PERMISSION				

F	PART NO FOR BULK PACKAGING	PART NO. FOR TUBE WITHOUT CAP PACKAGING	PART NO. FOR TUBE WITH CAP PACKAGING	PART NO. FOR TAPE & REEL WITHOUT CAP PACKAGING	PART NO. FOR TAPE & REEL WITH CAP PACKAGING	CKT SIZE	VOID POSITION	PLATING TYPE	DIMENSION				
									A	B	F	M	P
	87914-6211	-----	-----	-----	-----	62	----	1	78.74	76.20	10.92	5.84	2.79
	87914-6221	-----	-----	-----	-----	62	----	1	78.74	76.20	12.25	7.00	2.96
	87914-6212	-----	-----	-----	-----	62	----	2	78.74	76.20	10.92	5.84	2.79
	87914-6222	-----	-----	-----	-----	62	----	2	78.74	76.20	12.25	7.00	2.96
	87914-6213	-----	-----	-----	-----	62	----	3	78.74	76.20	10.92	5.84	2.79
	87914-6223	-----	-----	-----	-----	62	----	3	78.74	76.20	12.25	7.00	2.96
E	87914-6214	-----	-----	-----	-----	62	----	4	78.74	76.20	10.92	5.84	2.79
	87914-6224	-----	-----	-----	-----	62	----	4	78.74	76.20	12.25	7.00	2.96
	87914-6215	-----	-----	-----	-----	62	----	5	78.74	76.20	10.92	5.84	2.79
	87914-6225	-----	-----	-----	-----	62	----	5	78.74	76.20	12.25	7.00	2.96
	87914-6216	-----	-----	-----	-----	62	----	6	78.74	76.20	10.92	5.84	2.79
	87914-6226	-----	-----	-----	-----	62	----	6	78.74	76.20	12.25	7.00	2.96
D													
C													
B													

SEE SHEET 14 IEC NO: S2015-1512 DRAWN: PRAMAKRI SHINA 2015/06/25 CHKD: ATSEE 2015/06/25 APPR: KPRASAD 2015/07/15	QUALITY SYMBOLS ▽=0 ▽=0 ▽=0	GENERAL TOLERANCES (UNLESS SPECIFIED)		DIMENSION STYLE MM ONLY		SCALE NTS	DESIGN UNITS METRIC	THIRD ANGLE PROJECTION	
			mm	INCH	DRAWN BY KCHO	DATE 2004/11/05	TITLE 2.54MM PITCH DUAL ROW HEADER SINGLE WAFER, T/H molex DOCUMENT NO. SD-87914-013 SHEET NO. 36 OF 45		
		4 PLACES	±---	±---	CHECKED BY PTLIM	DATE 2004/12/08			
		3 PLACES	±---	±---	APPROVED BY MLONG	DATE 2010/09/06			
			2 PLACES	±0.20	±---				
			1 PLACE	±---	±---				
			0 PLACE	±	±				
			ANGULAR ± 3 °		MATERIAL NO.				
			DRAFT WHERE APPLICABLE MUST REMAIN WITHIN DIMENSIONS		SEE TABLE				
			SIZE A3	THIS DRAWING CONTAINS INFORMATION THAT IS PROPRIETARY TO MOLEX INCORPORATED AND SHOULD NOT BE USED WITHOUT WRITTEN PERMISSION					

	10	9	8	7	6	5	4	3	2	1			
	PART NO FOR BULK PACKAGING	PART NO. FOR TUBE WITHOUT CAP PACKAGING	PART NO. FOR TUBE WITH CAP PACKAGING	PART NO. FOR TAPE & REEL WITHOUT CAP PACKAGING	PART NO. FOR TAPE & REEL WITH CAP PACKAGING	CKT SIZE	VOID POSITION	PLATING TYPE	DIMENSION				
									A	B	F	M	P
F	87914-6411	-----	-----	-----	-----	64	-----	1	81.28	78.74	10.92	5.84	2.79
	87914-6421	-----	-----	-----	-----	64	-----	1	81.28	78.74	12.25	7.00	2.96
	87914-6412	-----	-----	-----	-----	64	-----	2	81.28	78.74	10.92	5.84	2.79
	87914-6422	-----	-----	-----	-----	64	-----	2	81.28	78.74	12.25	7.00	2.96
	87914-6413	-----	-----	-----	-----	64	-----	3	81.28	78.74	10.92	5.84	2.79
	87914-6423	-----	-----	-----	-----	64	-----	3	81.28	78.74	12.25	7.00	2.96
E	87914-6414	-----	-----	-----	-----	64	-----	4	81.28	78.74	10.92	5.84	2.79
	87914-6424	-----	-----	-----	-----	64	-----	4	81.28	78.74	12.25	7.00	2.96
	87914-6415	-----	-----	-----	-----	64	-----	5	81.28	78.74	10.92	5.84	2.79
	87914-6425	-----	-----	-----	-----	64	-----	5	81.28	78.74	12.25	7.00	2.96
	87914-6416	-----	-----	-----	-----	64	-----	6	81.28	78.74	10.92	5.84	2.79
	87914-6426	-----	-----	-----	-----	64	-----	6	81.28	78.74	12.25	7.00	2.96
D													
C													
B													

SEE SHEET 14 IEC NO: S2015-1512 DRAWN: PRAMAKRI SHINHA 2015/06/25 CHKD: ATSEE 2015/06/25 APPR: KPRASAD 2015/07/15	QUALITY SYMBOLS 	GENERAL TOLERANCES (UNLESS SPECIFIED)		DIMENSION STYLE		SCALE	DESIGN UNITS	THIRD ANGLE PROJECTION	
				MM ONLY		NTS	METRIC		
		4 PLACES ± --- ± ---		DRAWN BY	DATE	TITLE 2.54MM PITCH DUAL ROW HEADER SINGLE WAFER, T/H DOCUMENT NO. SD-87914-013 SHEET NO. 37 OF 45			
		3 PLACES ± --- ± ---		CHECKED BY	DATE				
		2 PLACES ± 0.20 ± ---		PTL IM	2004/12/08				
		1 PLACE ± --- ± ---		APPROVED BY	DATE				
		0 PLACE ± ±		MLONG	2010/09/06				
		ANGULAR ± 3 °		MATERIAL NO.					
		DRAFT WHERE APPLICABLE MUST REMAIN WITHIN DIMENSIONS		SEE TABLE					
				SIZE A3		THIS DRAWING CONTAINS INFORMATION THAT IS PROPRIETARY TO MOLEX INCORPORATED AND SHOULD NOT BE USED WITHOUT WRITTEN PERMISSION			

	10	9	8	7	6	5	4	3	2	1				
	PART NO FOR BULK PACKAGING	PART NO. FOR TUBE WITHOUT CAP PACKAGING	PART NO. FOR TUBE WITH CAP PACKAGING	PART NO. FOR TAPE & REEL WITHOUT CAP PACKAGING	PART NO. FOR TAPE & REEL WITH CAP PACKAGING	CKT SIZE	VOID POSITION	PLATING TYPE	DIMENSION					
									A	B	F	M	P	
F	87914-6611	-----	-----	-----	-----	66	----	1	83.82	81.28	10.92	5.84	2.79	F
	87914-6621	-----	-----	-----	-----	66	----	1	83.82	81.28	12.25	7.00	2.96	
	87914-6612	-----	-----	-----	-----	66	----	2	83.82	81.28	10.92	5.84	2.79	
	87914-6622	-----	-----	-----	-----	66	----	2	83.82	81.28	12.25	7.00	2.96	
	87914-6613	-----	-----	-----	-----	66	----	3	83.82	81.28	10.92	5.84	2.79	
	87914-6623	-----	-----	-----	-----	66	----	3	83.82	81.28	12.25	7.00	2.96	
E	87914-6614	-----	-----	-----	-----	66	----	4	83.82	81.28	10.92	5.84	2.79	E
	87914-6624	-----	-----	-----	-----	66	----	4	83.82	81.28	12.25	7.00	2.96	
	87914-6615	-----	-----	-----	-----	66	----	5	83.82	81.28	10.92	5.84	2.79	
	87914-6625	-----	-----	-----	-----	66	----	5	83.82	81.28	12.25	7.00	2.96	
	87914-6616	-----	-----	-----	-----	66	----	6	83.82	81.28	10.92	5.84	2.79	
	87914-6626	-----	-----	-----	-----	66	----	6	83.82	81.28	12.25	7.00	2.96	
D														D
C														C
B														B

SEE SHEET 14
 IEC NO: S2015-1512
 DRW: NARAYANAKRISHNA 2015/06/25
 CHKD: ATSEE 2015/06/25
 APPR: KPRASAD 2015/07/15

QUALITY SYMBOLS
 ▽=0
 ▽=0
 ▽=0

	GENERAL TOLERANCES (UNLESS SPECIFIED)	
	mm	INCH
4 PLACES	± ---	± ---
3 PLACES	± ---	± ---
2 PLACES	± 0.20	± ---
1 PLACE	± ---	± ---
0 PLACE	±	±
ANGULAR ± 3 °		
DRAFT WHERE APPLICABLE MUST REMAIN WITHIN DIMENSIONS		

DIMENSION STYLE	
MM ONLY	
DRAWN BY KCHO	DATE 2004/11/05
CHECKED BY PTLIM	DATE 2004/12/08
APPROVED BY MLONG	DATE 2010/09/06
MATERIAL NO.	
SEE TABLE	
THIS DRAWING CONTAINS INFORMATION THAT IS PROPRIETARY TO MOLEX INCORPORATED AND SHOULD NOT BE USED WITHOUT WRITTEN PERMISSION	

SCALE	DESIGN UNITS	THIRD ANGLE PROJECTION	
NTS	METRIC		
TITLE 2.54MM PITCH DUAL ROW HEADER SINGLE WAFER, T/H			
DOCUMENT NO.		SHEET NO.	
SD-87914-013		38 OF 45	

	10	9	8	7	6	5	4	3	2	1			
	PART NO FOR BULK PACKAGING	PART NO. FOR TUBE WITHOUT CAP PACKAGING	PART NO. FOR TUBE WITH CAP PACKAGING	PART NO. FOR TAPE & REEL WITHOUT CAP PACKAGING	PART NO. FOR TAPE & REEL WITH CAP PACKAGING	CKT SIZE	VOID POSITION	PLATING TYPE	DIMENSION				
									A	B	F	M	P
F	87914-6811	-----	-----	-----	-----	68	----	1	86.36	83.82	10.92	5.84	2.79
	87914-6821	-----	-----	-----	-----	68	----	1	86.36	83.82	12.25	7.00	2.96
	87914-6812	-----	-----	-----	-----	68	----	2	86.36	83.82	10.92	5.84	2.79
	87914-6822	-----	-----	-----	-----	68	----	2	86.36	83.82	12.25	7.00	2.96
	87914-6813	-----	-----	-----	-----	68	----	3	86.36	83.82	10.92	5.84	2.79
	87914-6823	-----	-----	-----	-----	68	----	3	86.36	83.82	12.25	7.00	2.96
E	87914-6814	-----	-----	-----	-----	68	----	4	86.36	83.82	10.92	5.84	2.79
	87914-6824	-----	-----	-----	-----	68	----	4	86.36	83.82	12.25	7.00	2.96
	87914-6815	-----	-----	-----	-----	68	----	5	86.36	83.82	10.92	5.84	2.79
	87914-6825	-----	-----	-----	-----	68	----	5	86.36	83.82	12.25	7.00	2.96
	87914-6816	-----	-----	-----	-----	68	----	6	86.36	83.82	10.92	5.84	2.79
	87914-6826	-----	-----	-----	-----	68	----	6	86.36	83.82	12.25	7.00	2.96
D													
C													
B													

SEE SHEET 14 IEC NO: S2015-1512 DRWN:RAMAKRISHNA 2015/06/25 CHKD:ATSEE 2015/06/25 APPR:KPRASAD 2015/07/15	QUALITY SYMBOLS =0 =0.20 =0	GENERAL TOLERANCES (UNLESS SPECIFIED)		DIMENSION STYLE	SCALE	DESIGN UNITS	THIRD ANGLE PROJECTION	
				MM ONLY	NTS	METRIC		
				mm	INCH			
		4 PLACES	± ---	± ---	DRAWN BY	DATE		TITLE
		3 PLACES	± ---	± ---	KCHO	2004/11/05		
		2 PLACES	± 0.20	± ---	CHECKED BY	DATE		2.54MM PITCH DUAL ROW HEADER SINGLE WAFER, T/H
1 PLACE	± ---	± ---	PTLIM	2004/12/08				
0 PLACE	±	±	APPROVED BY	DATE				
			MLONG	2010/09/06				
ANGULAR ± 3 °		MATERIAL NO.		DOCUMENT NO.		SHEET NO.		
DRAFT WHERE APPLICABLE MUST REMAIN WITHIN DIMENSIONS		SEE TABLE		SD-87914-013		39 OF 45		
		SIZE A3		THIS DRAWING CONTAINS INFORMATION THAT IS PROPRIETARY TO MOLEX INCORPORATED AND SHOULD NOT BE USED WITHOUT WRITTEN PERMISSION				

	9	8	7	6	5	4	3	2	1
--	---	---	---	---	---	---	---	---	---

PART NO FOR BULK PACKAGING	PART NO. FOR TUBE WITHOUT CAP PACKAGING	PART NO. FOR TUBE WITH CAP PACKAGING	PART NO. FOR TAPE & REEL WITHOUT CAP PACKAGING	PART NO. FOR TAPE & REEL WITH CAP PACKAGING	CKT SIZE	VOID POSITION	PLATING TYPE	DIMENSION				
								A	B	F	M	P
								F	87914-7011	-----	-----	-----
	87914-7021	-----	-----	-----	70	----	1	88.90	86.36	12.25	7.00	2.96
	87914-7012	-----	-----	-----	70	----	2	88.90	86.36	10.92	5.84	2.79
	87914-7022	-----	-----	-----	70	----	2	88.90	86.36	12.25	7.00	2.96
	87914-7013	-----	-----	-----	70	----	3	88.90	86.36	10.92	5.84	2.79
	87914-7023	-----	-----	-----	70	----	3	88.90	86.36	12.25	7.00	2.96
E	87914-7014	-----	-----	-----	70	----	4	88.90	86.36	10.92	5.84	2.79
	87914-7024	-----	-----	-----	70	----	4	88.90	86.36	12.25	7.00	2.96
	87914-7015	-----	-----	-----	70	----	5	88.90	86.36	10.92	5.84	2.79
	87914-7025	-----	-----	-----	70	----	5	88.90	86.36	12.25	7.00	2.96
	87914-7016	-----	-----	-----	70	----	6	88.90	86.36	10.92	5.84	2.79
	87914-7026	-----	-----	-----	70	----	6	88.90	86.36	12.25	7.00	2.96
D												
C												
B												

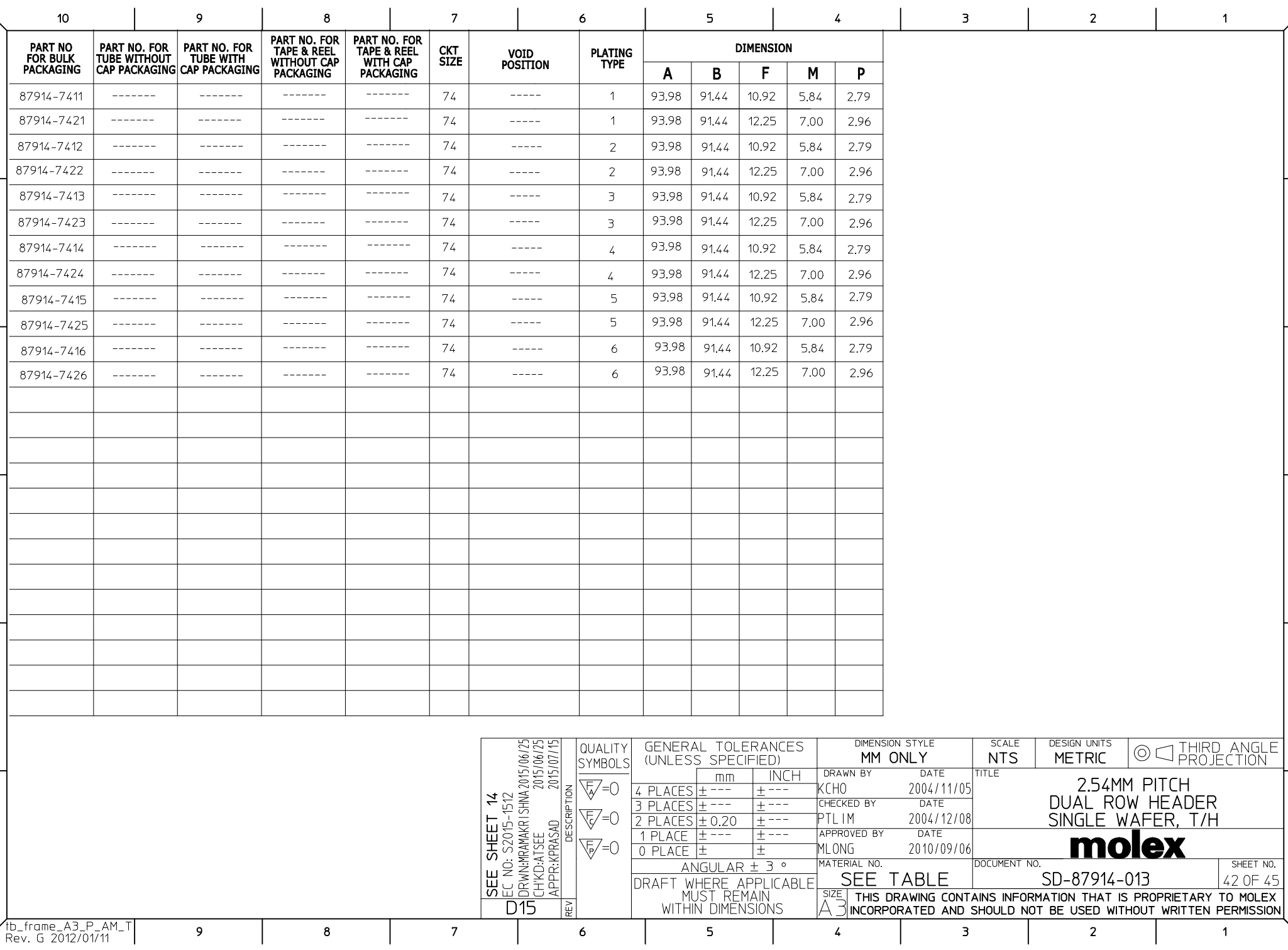
SEE SHEET 14 IEC NO: S2015-1512 DRAWN: RAMAKRISHNA 2015/06/25 CHKD: ATSEE 2015/06/25 APPR: KRASAD 2015/07/15 REV	QUALITY SYMBOLS	GENERAL TOLERANCES (UNLESS SPECIFIED)	DIMENSION STYLE	SCALE	DESIGN UNITS	THIRD ANGLE PROJECTION																		
	$\nabla_F = 0$ $\nabla_E = 0$ $\nabla_P = 0$	<table border="1"> <tr> <th></th> <th>mm</th> <th>INCH</th> </tr> <tr> <td>4 PLACES</td> <td>± ---</td> <td>± ---</td> </tr> <tr> <td>3 PLACES</td> <td>± ---</td> <td>± ---</td> </tr> <tr> <td>2 PLACES</td> <td>± 0.20</td> <td>± ---</td> </tr> <tr> <td>1 PLACE</td> <td>± ---</td> <td>± ---</td> </tr> <tr> <td>0 PLACE</td> <td>±</td> <td>±</td> </tr> </table>		mm	INCH	4 PLACES	± ---	± ---	3 PLACES	± ---	± ---	2 PLACES	± 0.20	± ---	1 PLACE	± ---	± ---	0 PLACE	±	±	MM ONLY	NTS	METRIC	
		mm	INCH																					
	4 PLACES	± ---	± ---																					
	3 PLACES	± ---	± ---																					
2 PLACES	± 0.20	± ---																						
1 PLACE	± ---	± ---																						
0 PLACE	±	±																						
	<table border="1"> <tr> <td>DRAWN BY</td> <td>DATE</td> <td>TITLE</td> </tr> <tr> <td>KCHO</td> <td>2004/11/05</td> <td rowspan="2">2.54MM PITCH DUAL ROW HEADER SINGLE WAFER, T/H</td> </tr> <tr> <td>CHECKED BY</td> <td>DATE</td> </tr> <tr> <td>PTLIM</td> <td>2004/12/08</td> <td rowspan="2">molex</td> </tr> <tr> <td>APPROVED BY</td> <td>DATE</td> </tr> <tr> <td>MLONG</td> <td>2010/09/06</td> <td></td> </tr> </table>	DRAWN BY	DATE	TITLE	KCHO	2004/11/05	2.54MM PITCH DUAL ROW HEADER SINGLE WAFER, T/H	CHECKED BY	DATE	PTLIM	2004/12/08	molex	APPROVED BY	DATE	MLONG	2010/09/06		SEE TABLE						
DRAWN BY	DATE	TITLE																						
KCHO	2004/11/05	2.54MM PITCH DUAL ROW HEADER SINGLE WAFER, T/H																						
CHECKED BY	DATE																							
PTLIM	2004/12/08	molex																						
APPROVED BY	DATE																							
MLONG	2010/09/06																							
	ANGULAR ± 3 ° DRAFT WHERE APPLICABLE MUST REMAIN WITHIN DIMENSIONS	MATERIAL NO. SEE TABLE	DOCUMENT NO. SD-87914-013	SHEET NO. 40 OF 45																				
			THIS DRAWING CONTAINS INFORMATION THAT IS PROPRIETARY TO MOLEX INCORPORATED AND SHOULD NOT BE USED WITHOUT WRITTEN PERMISSION																					

	10	9	8	7	6	5	4	3	2	1				
	PART NO FOR BULK PACKAGING	PART NO. FOR TUBE WITHOUT CAP PACKAGING	PART NO. FOR TUBE WITH CAP PACKAGING	PART NO. FOR TAPE & REEL WITHOUT CAP PACKAGING	PART NO. FOR TAPE & REEL WITH CAP PACKAGING	CKT SIZE	VOID POSITION	PLATING TYPE	DIMENSION					
								A	B	F	M	P		
F	87914-7211	-----	-----	-----	-----	72	----	1	91.44	88.90	10.92	5.84	2.79	F
	87914-7221	-----	-----	-----	-----	72	----	1	91.44	88.90	12.25	7.00	2.96	
	87914-7212	-----	-----	-----	-----	72	----	2	91.44	88.90	10.92	5.84	2.79	
	87914-7222	-----	-----	-----	-----	72	----	2	91.44	88.90	12.25	7.00	2.96	
	87914-7213	-----	-----	-----	-----	72	----	3	91.44	88.90	10.92	5.84	2.79	
	87914-7223	-----	-----	-----	-----	72	----	3	91.44	88.90	12.25	7.00	2.96	
E	87914-7214	-----	-----	-----	-----	72	----	4	91.44	88.90	10.92	5.84	2.79	E
	87914-7224	-----	-----	-----	-----	72	----	4	91.44	88.90	12.25	7.00	2.96	
	87914-7215	-----	-----	-----	-----	72	----	5	91.44	88.90	10.92	5.84	2.79	
	87914-7225	-----	-----	-----	-----	72	----	5	91.44	88.90	12.25	7.00	2.96	
	87914-7216	-----	-----	-----	-----	72	----	6	91.44	88.90	10.92	5.84	2.79	
	87914-7226	-----	-----	-----	-----	72	----	6	91.44	88.90	12.25	7.00	2.96	
D														D
C														C
B														B

SEE SHEET 14 IEC NO: S2015-1512 DRW:MRAMAKRI SHINA 2015/06/25 CHKD:ATSEE 2015/06/25 APPR:KPRASAD 2015/07/15 REV	QUALITY SYMBOLS	GENERAL TOLERANCES (UNLESS SPECIFIED)	DIMENSION STYLE	SCALE	DESIGN UNITS	THIRD ANGLE PROJECTION
	$\nabla_F = 0$ $\nabla_E = 0$ $\nabla_P = 0$	mm INCH 4 PLACES ± --- ± --- 3 PLACES ± --- ± --- 2 PLACES ± 0.20 ± --- 1 PLACE ± --- ± --- 0 PLACE ± ±	MM ONLY	NTS	METRIC	
		DRAWN BY: KCHO DATE: 2004/11/05 CHECKED BY: PTLIM DATE: 2004/12/08 APPROVED BY: MLONG DATE: 2010/09/06	TITLE	2.54MM PITCH DUAL ROW HEADER SINGLE WAFER, T/H 		
		ANGULAR ± 3 ° DRAFT WHERE APPLICABLE MUST REMAIN WITHIN DIMENSIONS	MATERIAL NO. SEE TABLE	DOCUMENT NO. SD-87914-013	SHEET NO. 41 OF 45	
				SIZE: A3 THIS DRAWING CONTAINS INFORMATION THAT IS PROPRIETARY TO MOLEX INCORPORATED AND SHOULD NOT BE USED WITHOUT WRITTEN PERMISSION		

PART NO FOR BULK PACKAGING	PART NO. FOR TUBE WITHOUT CAP PACKAGING	PART NO. FOR TUBE WITH CAP PACKAGING	PART NO. FOR TAPE & REEL WITHOUT CAP PACKAGING	PART NO. FOR TAPE & REEL WITH CAP PACKAGING	CKT SIZE	VOID POSITION	PLATING TYPE	DIMENSION				
								A	B	F	M	P
								F	87914-7411	-----	-----	-----
	87914-7421	-----	-----	-----	74	-----	1	93.98	91.44	12.25	7.00	2.96
	87914-7412	-----	-----	-----	74	-----	2	93.98	91.44	10.92	5.84	2.79
	87914-7422	-----	-----	-----	74	-----	2	93.98	91.44	12.25	7.00	2.96
	87914-7413	-----	-----	-----	74	-----	3	93.98	91.44	10.92	5.84	2.79
	87914-7423	-----	-----	-----	74	-----	3	93.98	91.44	12.25	7.00	2.96
E	87914-7414	-----	-----	-----	74	-----	4	93.98	91.44	10.92	5.84	2.79
	87914-7424	-----	-----	-----	74	-----	4	93.98	91.44	12.25	7.00	2.96
	87914-7415	-----	-----	-----	74	-----	5	93.98	91.44	10.92	5.84	2.79
	87914-7425	-----	-----	-----	74	-----	5	93.98	91.44	12.25	7.00	2.96
	87914-7416	-----	-----	-----	74	-----	6	93.98	91.44	10.92	5.84	2.79
	87914-7426	-----	-----	-----	74	-----	6	93.98	91.44	12.25	7.00	2.96
D												
C												
B												

SEE SHEET 14 IEC NO: S2015-1512 DRAWN: PRAMAKRI SHINA 2015/06/25 CHKD: ATSEE 2015/06/25 APPR: KPRASAD 2015/07/15	QUALITY SYMBOLS ▽=0 ▽=0 ▽=0	GENERAL TOLERANCES (UNLESS SPECIFIED)		DIMENSION STYLE MM ONLY	SCALE NTS	DESIGN UNITS METRIC	THIRD ANGLE PROJECTION	
				DRAWN BY KCHO	DATE 2004/11/05	TITLE 2.54MM PITCH DUAL ROW HEADER SINGLE WAFER, T/H		
				CHECKED BY PTLIM	DATE 2004/12/08	molex		
				APPROVED BY MLONG	DATE 2010/09/06			
		ANGULAR ± 3 °		MATERIAL NO.	DOCUMENT NO.		SHEET NO.	
		DRAFT WHERE APPLICABLE MUST REMAIN WITHIN DIMENSIONS		SEE TABLE	SD-87914-013		42 OF 45	
		THIS DRAWING CONTAINS INFORMATION THAT IS PROPRIETARY TO MOLEX INCORPORATED AND SHOULD NOT BE USED WITHOUT WRITTEN PERMISSION						



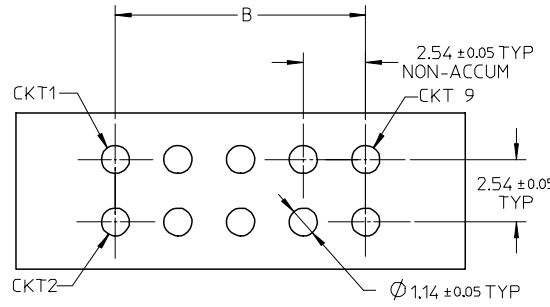
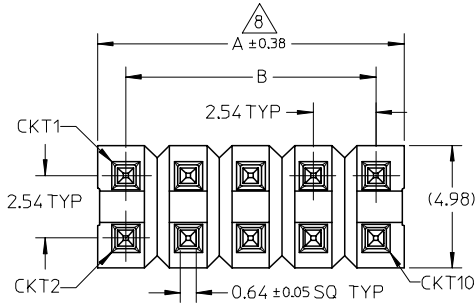
PART NO FOR BULK PACKAGING	PART NO. FOR TUBE WITHOUT CAP PACKAGING	PART NO. FOR TUBE WITH CAP PACKAGING	PART NO. FOR TAPE & REEL WITHOUT CAP PACKAGING	PART NO. FOR TAPE & REEL WITH CAP PACKAGING	CKT SIZE	VOID POSITION	PLATING TYPE	DIMENSION				
								A	B	F	M	P
								87914-7811	-----	-----	-----	-----
87914-7821	-----	-----	-----	-----	78	----	1	99.06	96.52	12.25	7.00	2.96
87914-7812	-----	-----	-----	-----	78	----	2	99.06	96.52	10.92	5.84	2.79
87914-7822	-----	-----	-----	-----	78	----	2	99.06	96.52	12.25	7.00	2.96
87914-7813	-----	-----	-----	-----	78	----	3	99.06	96.52	10.92	5.84	2.79
87914-7823	-----	-----	-----	-----	78	----	3	99.06	96.52	12.25	7.00	2.96
87914-7814	-----	-----	-----	-----	78	----	4	99.06	96.52	10.92	5.84	2.79
87914-7824	-----	-----	-----	-----	78	----	4	99.06	96.52	12.25	7.00	2.96
87914-7815	-----	-----	-----	-----	78	----	5	99.06	96.52	10.92	5.84	2.79
87914-7825	-----	-----	-----	-----	78	----	5	99.06	96.52	12.25	7.00	2.96
87914-7816	-----	-----	-----	-----	78	----	6	99.06	96.52	10.92	5.84	2.79
87914-7826	-----	-----	-----	-----	78	----	6	99.06	96.52	12.25	7.00	2.96

SEE SHEET 14 IEC NO: S2015-1512 DRW: N/RAJAKRI SHINA 2015/06/25 CHKD: ATSEE 2015/06/25 APPR: KPRASAD 2015/07/15	QUALITY SYMBOLS	GENERAL TOLERANCES (UNLESS SPECIFIED)	DIMENSION STYLE	SCALE	DESIGN UNITS	THIRD ANGLE PROJECTION																		
	$\nabla_F = 0$ $\nabla_E = 0$ $\nabla_D = 0$	<table border="1"> <tr><th colspan="2">mm</th><th>INCH</th></tr> <tr><td>4 PLACES</td><td>± ---</td><td>± ---</td></tr> <tr><td>3 PLACES</td><td>± ---</td><td>± ---</td></tr> <tr><td>2 PLACES</td><td>± 0.20</td><td>± ---</td></tr> <tr><td>1 PLACE</td><td>± ---</td><td>± ---</td></tr> <tr><td>0 PLACE</td><td>±</td><td>±</td></tr> </table>	mm		INCH	4 PLACES	± ---	± ---	3 PLACES	± ---	± ---	2 PLACES	± 0.20	± ---	1 PLACE	± ---	± ---	0 PLACE	±	±	MM ONLY	NTS	METRIC	
	mm		INCH																					
	4 PLACES	± ---	± ---																					
3 PLACES	± ---	± ---																						
2 PLACES	± 0.20	± ---																						
1 PLACE	± ---	± ---																						
0 PLACE	±	±																						
	<table border="1"> <tr><td>DRAWN BY</td><td>DATE</td><td rowspan="4">TITLE</td></tr> <tr><td>KCHO</td><td>2004/11/05</td></tr> <tr><td>CHECKED BY</td><td>DATE</td></tr> <tr><td>PTLIM</td><td>2004/12/08</td></tr> <tr><td>APPROVED BY</td><td>DATE</td><td rowspan="3" style="text-align: center;">molex</td></tr> <tr><td>MLONG</td><td>2010/09/06</td></tr> <tr><td>MATERIAL NO.</td><td>DOCUMENT NO.</td></tr> </table>	DRAWN BY	DATE	TITLE	KCHO	2004/11/05	CHECKED BY	DATE	PTLIM	2004/12/08	APPROVED BY	DATE	molex	MLONG	2010/09/06	MATERIAL NO.	DOCUMENT NO.	<table border="1"> <tr><td>2.54MM PITCH</td></tr> <tr><td>DUAL ROW HEADER</td></tr> <tr><td>SINGLE WAFER, T/H</td></tr> </table>	2.54MM PITCH	DUAL ROW HEADER	SINGLE WAFER, T/H			
DRAWN BY	DATE	TITLE																						
KCHO	2004/11/05																							
CHECKED BY	DATE																							
PTLIM	2004/12/08																							
APPROVED BY	DATE	molex																						
MLONG	2010/09/06																							
MATERIAL NO.	DOCUMENT NO.																							
2.54MM PITCH																								
DUAL ROW HEADER																								
SINGLE WAFER, T/H																								
	ANGULAR ± 3 ° DRAFT WHERE APPLICABLE MUST REMAIN WITHIN DIMENSIONS	SEE TABLE THIS DRAWING CONTAINS INFORMATION THAT IS PROPRIETARY TO MOLEX INCORPORATED AND SHOULD NOT BE USED WITHOUT WRITTEN PERMISSION	SD-87914-013 44 OF 45																					

	10	9	8	7	6	5	4	3	2	1				
	PART NO FOR BULK PACKAGING	PART NO. FOR TUBE WITHOUT CAP PACKAGING	PART NO. FOR TUBE WITH CAP PACKAGING	PART NO. FOR TAPE & REEL WITHOUT CAP PACKAGING	PART NO. FOR TAPE & REEL WITH CAP PACKAGING	CKT SIZE	VOID POSITION	PLATING TYPE	DIMENSIONS					
									A	B	F	M	P	
F	87914-8011	-----	-----	-----	-----	80	----	1	101.60	99.06	10.92	5.84	2.79	F
	87914-8021	-----	-----	-----	-----	80	----	1	101.60	99.06	12.25	7.00	2.96	
	87914-8012	-----	-----	-----	-----	80	----	2	101.60	99.06	10.92	5.84	2.79	
	87914-8022	-----	-----	-----	-----	80	----	2	101.60	99.06	12.25	7.00	2.96	
	87914-8013	-----	-----	-----	-----	80	----	3	101.60	99.06	10.92	5.84	2.79	
	87914-8023	-----	-----	-----	-----	80	----	3	101.60	99.06	12.25	7.00	2.96	
E	87914-8014	-----	-----	-----	-----	80	----	4	101.60	99.06	10.92	5.84	2.79	E
	87914-8024	-----	-----	-----	-----	80	----	4	101.60	99.06	12.25	7.00	2.96	
	87914-8015	-----	-----	-----	-----	80	----	5	101.60	99.06	10.92	5.84	2.79	
	87914-8025	-----	-----	-----	-----	80	----	5	101.60	99.06	12.25	7.00	2.96	
	87914-8016	-----	-----	-----	-----	80	----	6	101.60	99.06	10.92	5.84	2.79	
	87914-8026	-----	-----	-----	-----	80	----	6	101.60	99.06	12.25	7.00	2.96	
D														D
C														C
B														B

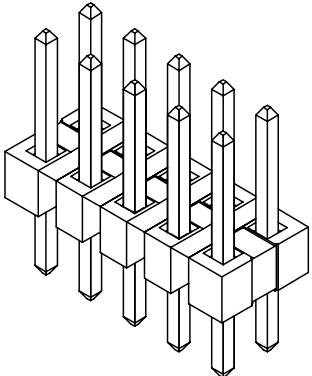
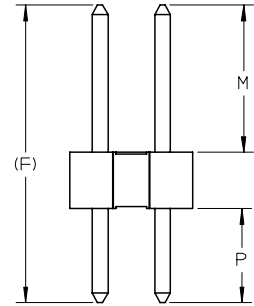
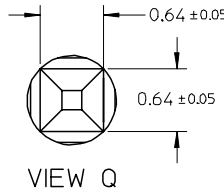
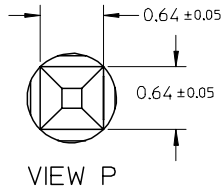
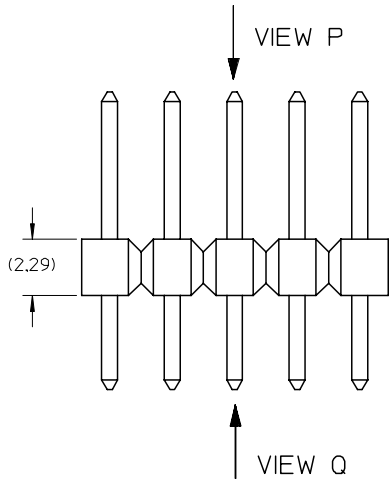
SEE SHEET 14 IEC NO: S2015-1512 DRAWN:RAMAKRISHNA 2015/06/25 CHKD:ATSEE 2015/06/25 APPR:KPRASAD 2015/07/15	QUALITY SYMBOLS $\nabla_F = 0$ $\nabla_F = 0$ $\nabla_F = 0$	GENERAL TOLERANCES (UNLESS SPECIFIED)		DIMENSION STYLE MM ONLY	SCALE NTS	DESIGN UNITS METRIC	THIRD ANGLE PROJECTION	
		4 PLACES \pm --- \pm ---	mm INCH	DRAWN BY KCHO	DATE 2004/11/05	TITLE 2.54MM PITCH DUAL ROW HEADER SINGLE WAFER, T/H		
		3 PLACES \pm --- \pm ---		CHECKED BY PTLIM	DATE 2004/12/08	molex		
		2 PLACES \pm 0.20 \pm ---		APPROVED BY MLONG	DATE 2010/09/06			
		1 PLACE \pm --- \pm ---		MATERIAL NO.	DOCUMENT NO. SD-87914-013	SHEET NO. 45 OF 45		
0 PLACE \pm \pm		ANGULAR $\pm 3^\circ$ DRAFT WHERE APPLICABLE MUST REMAIN WITHIN DIMENSIONS		SEE TABLE				

10 9 8 7 6 5 4 3 2 1



RECOMMENDED PCB LAYOUT

- NOTES:
- MATERIAL:
HSG: LCP, GLASS-FILLED, UL94V-0,
COLOR: BLACK
PIN: 0.64MM SQ PIN, COPPER ALLOY
 - PLATING TYPE:
(1) : 0.381 μm MIN. GOLD PLATE ON CONTACT AND
1.905 μm MIN. TIN ON SOLDERTAIL OVER
1.270 μm MIN. NICKEL OVERALL.
(2) : 0.762 μm MIN. GOLD PLATE ON CONTACT AND
1.905 μm MIN. TIN ON SOLDERTAIL OVER
1.270 μm MIN. NICKEL OVERALL.
(3) : 2.540 μm MIN. TIN IN SELECTED AREA OVER
1.270 μm MIN. NICKEL OVERALL.
 - THE ABOVE 10 CKT IS FOR ILLUSTRATION PURPOSE ONLY.
 - FOR PACKAGING OPTION PLEASE REFER TO THE TABLE.
 - RECOMMENDED PCB THICKNESS 1.60MM.
 - PRODUCT SPECIFICATION: PS-87920-019
 - WAFER TO BE FLAT WITHIN 0.003mm/mm
 - IRREGULAR CIRCUIT CUTOFF WITHIN BREAKAWAY SECTION IS PERMISSIBLE. CUTTING OR CHIPPING OF THE MAIN BODY IS NOT ACCEPTABLE.
 - PARTS ARE NOT STACKABLE ON 2.54 CENTER
 - PACKAGING SPECIFICATION:
TRAY: PK-89990-489
BULK: PK-89990-491



EWR# 1010 & 1021 EC NO: S2007-0182 DRWNS:SKL IM01 2006/09/11 CHKD:CWLAM 2006/09/12 APPR:KWLEE 2006/09/13	QUALITY SYMBOLS	GENERAL TOLERANCES (UNLESS SPECIFIED)		DIMENSION STYLE	SCALE	DESIGN UNITS	THIRD ANGLE PROJECTION	
	▼=0 ▽=0	mm	INCH	MM ONLY	NTS	METRIC		
		4 PLACES ± --- ± ---	SKL IM01 2006/08/21	TITLE				
		3 PLACES ± --- ± ---	CHECKED BY DATE	CUSTOM HEADER				
	2 PLACES ± 0.2 ± ---	CWLAM 2006/09/04	C-GRID, SINGLE WAFER HDR, THRU HOLE, VERTICAL, LF					
	1 PLACE ± --- ± ---	APPROVED BY DATE	MOLEX INCORPORATED					
	ANGULAR ± 3 °	KWLEE 2006/09/04	MATERIAL NO. DOCUMENT NO. SHEET NO.					
			SEE TABLE		SD-87914-059		1 OF 9	
			DRAFT WHERE APPLICABLE MUST REMAIN WITHIN DIMENSIONS					
			THIS DRAWING CONTAINS INFORMATION THAT IS PROPRIETARY TO MOLEX INCORPORATED AND SHOULD NOT BE USED WITHOUT WRITTEN PERMISSION					

9 8 7 6 5 4 3 2 1

PART NO FOR TRAY PACKAGING	PART NO FOR BULK PACKAGING	CKT SIZE	PLATING TYPE	DIMENSION				
				A	B	F	MATING END	SOLDER TAIL
							M	P
87914-0401	-----	4	1	5.08	2.54	13.21	8.13	2.79
87914-0402	-----	4	2	5.08	2.54	13.21	8.13	2.79
87914-0403	-----	4	3	5.08	2.54	13.21	8.13	2.79
87914-0601	-----	6	1	7.62	5.08	13.21	8.13	2.79
87914-0602	-----	6	2	7.62	5.08	13.21	8.13	2.79
87914-0603	-----	6	3	7.62	5.08	13.21	8.13	2.79
87914-0801	-----	8	1	10.16	7.62	13.21	8.13	2.79
87914-0802	-----	8	2	10.16	7.62	13.21	8.13	2.79
87914-0803	-----	8	3	10.16	7.62	13.21	8.13	2.79
87914-1001	-----	10	1	12.70	10.16	13.21	8.13	2.79
87914-1002	-----	10	2	12.70	10.16	13.21	8.13	2.79
87914-1003	-----	10	3	12.70	10.16	13.21	8.13	2.79

PART NO FOR TRAY PACKAGING	PART NO FOR BULK PACKAGING	CKT SIZE	PLATING TYPE	DIMENSION				
				A	B	F	MATING END	SOLDER TAIL
							M	P
87914-0204	-----	2	1	2.54	---	11.11	6.10	2.72
87914-0205	-----	2	2	2.54	---	11.11	6.10	2.72
87914-0206	-----	2	3	2.54	---	11.11	6.10	2.72
87914-0404	-----	4	1	5.08	2.54	11.11	6.10	2.72
87914-0405	-----	4	2	5.08	2.54	11.11	6.10	2.72
87914-0406	-----	4	3	5.08	2.54	11.11	6.10	2.72
87914-0604	-----	6	1	7.62	5.08	11.11	6.10	2.72
87914-0605	-----	6	2	7.62	5.08	11.11	6.10	2.72
87914-0606	-----	6	3	7.62	5.08	11.11	6.10	2.72
87914-0804	-----	8	1	10.16	7.62	11.11	6.10	2.72
87914-0805	-----	8	2	10.16	7.62	11.11	6.10	2.72
87914-0806	-----	8	3	10.16	7.62	11.11	6.10	2.72
87914-1004	-----	10	1	12.70	10.16	11.11	6.10	2.72
87914-1005	-----	10	2	12.70	10.16	11.11	6.10	2.72
87914-1006	-----	10	3	12.70	10.16	11.11	6.10	2.72

EWR# 1010 & 1021
 EC NO: S2007-0182
 DRWNS:SKL IM01 2006/09/11
 CHKD:CWLAM 2006/09/12
 APPR:KWLEE 2006/09/13

QUALITY SYMBOLS
 ▼=0
 ▽=0

GENERAL TOLERANCES (UNLESS SPECIFIED)

	mm	INCH
4 PLACES	± ---	± ---
3 PLACES	± ---	± ---
2 PLACES	± 0.2	± ---
1 PLACE	± ---	± ---
ANGULAR ± 3 °		

 DRAFT WHERE APPLICABLE MUST REMAIN WITHIN DIMENSIONS

DIMENSION STYLE
 MM ONLY
 DRAWN BY SKL IM01 DATE 2006/08/21
 CHECKED BY CWLAM DATE 2006/09/04
 APPROVED BY KWLEE DATE 2006/09/04
 MATERIAL NO. SEE TABLE

SCALE NTS
 DESIGN UNITS METRIC
 THIRD ANGLE PROJECTION
 TITLE
 CUSTOM HEADER
 C-GRID, SINGLE WAFER HDR,
 THROU HOLE, VERTICAL, LF
 MOLEX INCORPORATED
 DOCUMENT NO. SD-87914-059
 SHEET NO. 2 OF 9
 THIS DRAWING CONTAINS INFORMATION THAT IS PROPRIETARY TO MOLEX INCORPORATED AND SHOULD NOT BE USED WITHOUT WRITTEN PERMISSION

F	PART NO FOR TRAY PACKAGING	PART NO FOR BULK PACKAGING	CKT SIZE	PLATING TYPE	DIMENSION					PART NO FOR TRAY PACKAGING	PART NO FOR BULK PACKAGING	CKT SIZE	PLATING TYPE	DIMENSION					F	
					A	B	F	MATING END	SOLDER TAIL					A	B	F	MATING END	SOLDER TAIL		E
								M	P								M	P		
	87914-1201	-----	12	1	15.24	12.70	13.21	8.13	2.79	87914-1204	-----	12	1	15.24	12.70	11.11	6.10	2.72		
	87914-1202	-----	12	2	15.24	12.70	13.21	8.13	2.79	87914-1205	-----	12	2	15.24	12.70	11.11	6.10	2.72		
	87914-1203	-----	12	3	15.24	12.70	13.21	8.13	2.79	87914-1206	-----	12	3	15.24	12.70	11.11	6.10	2.72		
	87914-1401	-----	14	1	17.78	15.24	13.21	8.13	2.79	87914-1404	-----	14	1	17.78	15.24	11.11	6.10	2.72		
	87914-1402	-----	14	2	17.78	15.24	13.21	8.13	2.79	87914-1405	-----	14	2	17.78	15.24	11.11	6.10	2.72		
	87914-1403	-----	14	3	17.78	15.24	13.21	8.13	2.79	87914-1406	-----	14	3	17.78	15.24	11.11	6.10	2.72		
	87914-1601	-----	16	1	20.32	17.78	13.21	8.13	2.79	87914-1604	-----	16	1	20.32	17.78	11.11	6.10	2.72		
	87914-1602	-----	16	2	20.32	17.78	13.21	8.13	2.79	87914-1605	-----	16	2	20.32	17.78	11.11	6.10	2.72		
	87914-1603	-----	16	3	20.32	17.78	13.21	8.13	2.79	87914-1606	-----	16	3	20.32	17.78	11.11	6.10	2.72		
	87914-1801	-----	18	1	22.86	20.32	13.21	8.13	2.79	87914-1804	-----	18	1	22.86	20.32	11.11	6.10	2.72		
	87914-1802	-----	18	2	22.86	20.32	13.21	8.13	2.79	87914-1805	-----	18	2	22.86	20.32	11.11	6.10	2.72		
	87914-1803	-----	18	3	22.86	20.32	13.21	8.13	2.79	87914-1806	-----	18	3	22.86	20.32	11.11	6.10	2.72		
	87914-2001	-----	20	1	25.40	22.86	13.21	8.13	2.79	87914-2004	-----	20	1	25.40	22.86	11.11	6.10	2.72		
	87914-2002	-----	20	2	25.40	22.86	13.21	8.13	2.79	87914-2005	-----	20	2	25.40	22.86	11.11	6.10	2.72		
	87914-2003	-----	20	3	25.40	22.86	13.21	8.13	2.79	87914-2006	-----	20	3	25.40	22.86	11.11	6.10	2.72		

B

A	EWR# 1010 & 1021 EC NO: S2007-0182 DRWNS:SKLIM01 2006/09/11 CHKD:CWLAM 2006/09/12 APPR:KWLEE 2006/09/13	QUALITY SYMBOLS	GENERAL TOLERANCES (UNLESS SPECIFIED)	DIMENSION STYLE	SCALE	DESIGN UNITS	THIRD ANGLE PROJECTION															
		$\nabla = 0$ $\triangle = 0$	<table border="1"> <tr> <th></th> <th>mm</th> <th>INCH</th> </tr> <tr> <td>4 PLACES</td> <td>\pm---</td> <td>\pm---</td> </tr> <tr> <td>3 PLACES</td> <td>\pm---</td> <td>\pm---</td> </tr> <tr> <td>2 PLACES</td> <td>± 0.2</td> <td>\pm---</td> </tr> <tr> <td>1 PLACE</td> <td>\pm---</td> <td>\pm---</td> </tr> </table>		mm	INCH	4 PLACES	\pm ---	\pm ---	3 PLACES	\pm ---	\pm ---	2 PLACES	± 0.2	\pm ---	1 PLACE	\pm ---	\pm ---	MM ONLY	NTS	METRIC	
			mm	INCH																		
		4 PLACES	\pm ---	\pm ---																		
3 PLACES	\pm ---	\pm ---																				
2 PLACES	± 0.2	\pm ---																				
1 PLACE	\pm ---	\pm ---																				
DESCRIPTION	DRAFT WHERE APPLICABLE MUST REMAIN WITHIN DIMENSIONS	<table border="1"> <tr> <th>DRAWN BY</th> <th>DATE</th> <th>TITLE</th> </tr> <tr> <td>SKLIM01</td> <td>2006/08/21</td> <td rowspan="3">CUSTOM HEADER C-GRID, SINGLE WAFER HDR, THROU HOLE, VERTICAL, LF</td> </tr> <tr> <th>CHECKED BY</th> <th>DATE</th> </tr> <tr> <td>CWLAM</td> <td>2006/09/04</td> </tr> <tr> <th>APPROVED BY</th> <th>DATE</th> <td rowspan="2">MOLEX INCORPORATED</td> </tr> <tr> <td>KWLEE</td> <td>2006/09/04</td> </tr> </table>	DRAWN BY	DATE	TITLE	SKLIM01	2006/08/21	CUSTOM HEADER C-GRID, SINGLE WAFER HDR, THROU HOLE, VERTICAL, LF	CHECKED BY	DATE	CWLAM	2006/09/04	APPROVED BY	DATE	MOLEX INCORPORATED	KWLEE	2006/09/04					
DRAWN BY	DATE	TITLE																				
SKLIM01	2006/08/21	CUSTOM HEADER C-GRID, SINGLE WAFER HDR, THROU HOLE, VERTICAL, LF																				
CHECKED BY	DATE																					
CWLAM	2006/09/04																					
APPROVED BY	DATE	MOLEX INCORPORATED																				
KWLEE	2006/09/04																					
REV			SIZE	MATERIAL NO.	DOCUMENT NO.	SHEET NO.																
A			A3	SEE TABLE	SD-87914-059	3 OF 9																


	10		9		8			7		6		5		4		3			2		1	
F	PART NO FOR TRAY PACKAGING	PART NO FOR BULK PACKAGING	CKT SIZE	PLATING TYPE	DIMENSION					MATING END	SOLDER TAIL	PART NO FOR TRAY PACKAGING	PART NO FOR BULK PACKAGING	CKT SIZE	PLATING TYPE	DIMENSION					MATING END	SOLDER TAIL
					A	B	F	M	P							A	B	F	M	P		
					87914-2201	-----	22	1	27.94							25.40	13.21	8.13	2.79	87914-2204		
87914-2202	-----	22	2	27.94	25.40	13.21	8.13	2.79	87914-2205	-----	22	2	27.94	25.40	11.11	6.10	2.72					
87914-2203	-----	22	3	27.94	25.40	13.21	8.13	2.79	87914-2206	-----	22	3	27.94	25.40	11.11	6.10	2.72					
	87914-2401	-----	24	1	30.48	27.94	13.21	8.13	2.79	87914-2404	-----	24	1	30.48	27.94	11.11	6.10	2.72				
	87914-2402	-----	24	2	30.48	27.94	13.21	8.13	2.79	87914-2405	-----	24	2	30.48	27.94	11.11	6.10	2.72				
E	87914-2403	-----	24	3	30.48	27.94	13.21	8.13	2.79	87914-2406	-----	24	3	30.48	27.94	11.11	6.10	2.72				
	87914-2601	-----	26	1	33.02	30.48	13.21	8.13	2.79	87914-2604	-----	26	1	33.02	30.48	11.11	6.10	2.72				
	87914-2602	-----	26	2	33.02	30.48	13.21	8.13	2.79	87914-2605	-----	26	2	33.02	30.48	11.11	6.10	2.72				
	87914-2603	-----	26	3	33.02	30.48	13.21	8.13	2.79	87914-2606	-----	26	3	33.02	30.48	11.11	6.10	2.72				
D	87914-2801	-----	28	1	35.56	33.02	13.21	8.13	2.79	87914-2804	-----	28	1	35.56	33.02	11.11	6.10	2.72				
	87914-2802	-----	28	2	35.56	33.02	13.21	8.13	2.79	87914-2805	-----	28	2	35.56	33.02	11.11	6.10	2.72				
	87914-2803	-----	28	3	35.56	33.02	13.21	8.13	2.79	87914-2806	-----	28	3	35.56	33.02	11.11	6.10	2.72				
	87914-3001	-----	30	1	38.10	35.56	13.21	8.13	2.79	87914-3004	-----	30	1	38.10	35.56	11.11	6.10	2.72				
	87914-3002	-----	30	2	38.10	35.56	13.21	8.13	2.79	87914-3005	-----	30	2	38.10	35.56	11.11	6.10	2.72				
C	87914-3003	-----	30	3	38.10	35.56	13.21	8.13	2.79	87914-3006	-----	30	3	38.10	35.56	11.11	6.10	2.72				

B																					B
---	--	--	--	--	--	--	--	--	--	--	--	--	--	--	--	--	--	--	--	--	---

A	EWR# 1010 & 1021 EC NO: S2007-0182 DRWS:SKL1M01 2006/09/11 CHKD:CWLAM 2006/09/12 APPR:KWLEE 2006/09/13	QUALITY SYMBOLS ▽=0 ▽=0	REV DESCRIPTION	GENERAL TOLERANCES (UNLESS SPECIFIED)	DIMENSION STYLE	SCALE	DESIGN UNITS	THIRD ANGLE PROJECTION
					MM ONLY	NTS	METRIC	
				4 PLACES ± --- ± --- 3 PLACES ± --- ± --- 2 PLACES ± 0.2 ± --- 1 PLACE ± --- ± --- ANGULAR ± 3 °	DRAWN BY DATE SKL1M01 2006/08/21 CHECKED BY DATE CWLAM 2006/09/04 APPROVED BY DATE KWLEE 2006/09/04	TITLE CUSTOM HEADER C-GRID, SINGLE WAFER HDR, THROUGH HOLE, VERTICAL, LF	MATERIAL NO. KWLEE	DOCUMENT NO. SD-87914-059

F	PART NO FOR TRAY PACKAGING	PART NO FOR BULK PACKAGING	CKT SIZE	PLATING TYPE	DIMENSION					PART NO FOR TRAY PACKAGING	PART NO FOR BULK PACKAGING	CKT SIZE	PLATING TYPE	DIMENSION					F	
					A	B	F	M	P					A	B	F	M	P		E
	87914-3201	-----	32	1	40.64	38.10	13.21	8.13	2.79	87914-3204	-----	32	1	40.64	38.10	11.11	6.10	2.72		
	87914-3202	-----	32	2	40.64	38.10	13.21	8.13	2.79	87914-3205	-----	32	2	40.64	38.10	11.11	6.10	2.72		
	87914-3203	-----	32	3	40.64	38.10	13.21	8.13	2.79	87914-3206	-----	32	3	40.64	38.10	11.11	6.10	2.72		
	87914-3401	-----	34	1	43.18	40.64	13.21	8.13	2.79	87914-3404	-----	34	1	43.18	40.64	11.11	6.10	2.72		
	87914-3402	-----	34	2	43.18	40.64	13.21	8.13	2.79	87914-3405	-----	34	2	43.18	40.64	11.11	6.10	2.72		
E	87914-3403	-----	34	3	43.18	40.64	13.21	8.13	2.79	87914-3406	-----	34	3	43.18	40.64	11.11	6.10	2.72		
	87914-3601	-----	36	1	45.72	43.18	13.21	8.13	2.79	87914-3604	-----	36	1	45.72	43.18	11.11	6.10	2.72		
	87914-3602	-----	36	2	45.72	43.18	13.21	8.13	2.79	87914-3605	-----	36	2	45.72	43.18	11.11	6.10	2.72		
	87914-3603	-----	36	3	45.72	43.18	13.21	8.13	2.79	87914-3606	-----	36	3	45.72	43.18	11.11	6.10	2.72		
	87914-3801	-----	38	1	48.26	45.72	13.21	8.13	2.79	87914-3804	-----	38	1	48.26	45.72	11.11	6.10	2.72		
	87914-3802	-----	38	2	48.26	45.72	13.21	8.13	2.79	87914-3805	-----	38	2	48.26	45.72	11.11	6.10	2.72		
	87914-3803	-----	38	3	48.26	45.72	13.21	8.13	2.79	87914-3806	-----	38	3	48.26	45.72	11.11	6.10	2.72		
	87914-4001	-----	40	1	50.80	48.26	13.21	8.13	2.79	87914-4004	-----	40	1	50.80	48.26	11.11	6.10	2.72		
	87914-4002	-----	40	2	50.80	48.26	13.21	8.13	2.79	87914-4005	-----	40	2	50.80	48.26	11.11	6.10	2.72		
C	87914-4003	-----	40	3	50.80	48.26	13.21	8.13	2.79	87914-4006	-----	40	3	50.80	48.26	11.11	6.10	2.72		

B																				B
---	--	--	--	--	--	--	--	--	--	--	--	--	--	--	--	--	--	--	--	---

A	EWR# 1010 & 1021 EC NO: S2007-0182 DRWNS:SKL M01 2006/09/11 CHKD:CWLAM 2006/09/12 APPR:KWLEE 2006/09/13	QUALITY SYMBOLS	$\nabla = 0$ $\triangle = 0$	GENERAL TOLERANCES (UNLESS SPECIFIED) <table border="1"> <tr> <td></td> <td>mm</td> <td>INCH</td> </tr> <tr> <td>4 PLACES</td> <td>\pm ---</td> <td>\pm ---</td> </tr> <tr> <td>3 PLACES</td> <td>\pm ---</td> <td>\pm ---</td> </tr> <tr> <td>2 PLACES</td> <td>\pm 0.2</td> <td>\pm ---</td> </tr> <tr> <td>1 PLACE</td> <td>\pm ---</td> <td>\pm ---</td> </tr> </table>		mm	INCH	4 PLACES	\pm ---	\pm ---	3 PLACES	\pm ---	\pm ---	2 PLACES	\pm 0.2	\pm ---	1 PLACE	\pm ---	\pm ---	DIMENSION STYLE MM ONLY	SCALE NTS	DESIGN UNITS METRIC	THIRD ANGLE PROJECTION	DRAWN BY SKL M01	DATE 2006/08/21	CUSTOM HEADER C-GRID, SINGLE WAFER HDR, THROU HOLE, VERTICAL, LF  MOLEX INCORPORATED	CHECKED BY CWLAM	DATE 2006/09/04	APPROVED BY KWLEE	DATE 2006/09/04	MATERIAL NO.	DOCUMENT NO. SD-87914-059	SHEET NO. 5 OF 9
			mm	INCH																													
		4 PLACES	\pm ---	\pm ---																													
		3 PLACES	\pm ---	\pm ---																													
2 PLACES	\pm 0.2	\pm ---																															
1 PLACE	\pm ---	\pm ---																															
DRAFT WHERE APPLICABLE MUST REMAIN WITHIN DIMENSIONS	SEE TABLE	SIZE A3	THIS DRAWING CONTAINS INFORMATION THAT IS PROPRIETARY TO MOLEX INCORPORATED AND SHOULD NOT BE USED WITHOUT WRITTEN PERMISSION																														

F	10		9		8		7		6		5		4		3		2		1	
	PART NO FOR TRAY PACKAGING	PART NO FOR BULK PACKAGING	CKT SIZE	PLATING TYPE	DIMENSION					PART NO FOR TRAY PACKAGING	PART NO FOR BULK PACKAGING	CKT SIZE	PLATING TYPE	DIMENSION						
					A	B	F	M	P					A	B	F	M	P		
	87914-4201	-----	42	1	53.34	50.80	13.21	8.13	2.79	87914-4204	-----	42	1	53.34	50.80	11.11	6.10	2.72		
	87914-4202	-----	42	2	53.34	50.80	13.21	8.13	2.79	87914-4205	-----	42	2	53.34	50.80	11.11	6.10	2.72		
	87914-4203	-----	42	3	53.34	50.80	13.21	8.13	2.79	87914-4206	-----	42	3	53.34	50.80	11.11	6.10	2.72		
	87914-4401	-----	44	1	55.88	53.34	13.21	8.13	2.79	87914-4404	-----	44	1	55.88	53.34	11.11	6.10	2.72		
	87914-4402	-----	44	2	55.88	53.34	13.21	8.13	2.79	87914-4405	-----	44	2	55.88	53.34	11.11	6.10	2.72		
	87914-4403	-----	44	3	55.88	53.34	13.21	8.13	2.79	87914-4406	-----	44	3	55.88	53.34	11.11	6.10	2.72		
	87914-4601	-----	46	1	58.42	55.88	13.21	8.13	2.79	87914-4604	-----	46	1	58.42	55.88	11.11	6.10	2.72		
	87914-4602	-----	46	2	58.42	55.88	13.21	8.13	2.79	87914-4605	-----	46	2	58.42	55.88	11.11	6.10	2.72		
	87914-4603	-----	46	3	58.42	55.88	13.21	8.13	2.79	87914-4606	-----	46	3	58.42	55.88	11.11	6.10	2.72		
	87914-4801	-----	48	1	60.96	58.42	13.21	8.13	2.79	87914-4804	-----	48	1	60.96	58.42	11.11	6.10	2.72		
	87914-4802	-----	48	2	60.96	58.42	13.21	8.13	2.79	87914-4805	-----	48	2	60.96	58.42	11.11	6.10	2.72		
	87914-4803	-----	48	3	60.96	58.42	13.21	8.13	2.79	87914-4806	-----	48	3	60.96	58.42	11.11	6.10	2.72		
	87914-5001	-----	50	1	63.50	60.96	13.21	8.13	2.79	87914-5004	-----	50	1	63.50	60.96	11.11	6.10	2.72		
	87914-5002	-----	50	2	63.50	60.96	13.21	8.13	2.79	87914-5005	-----	50	2	63.50	60.96	11.11	6.10	2.72		
	87914-5003	-----	50	3	63.50	60.96	13.21	8.13	2.79	87914-5006	-----	50	3	63.50	60.96	11.11	6.10	2.72		

B

A	EWR# 1010 & 1021 EC NO: S2007-0182 DRWNS:SKL IM01 2006/09/11 CHKD:CWLAM 2006/09/12 APPR:KWLEE 2006/09/13	QUALITY SYMBOLS = 0 = 0	GENERAL TOLERANCES (UNLESS SPECIFIED) <table border="1"> <tr> <th></th> <th>mm</th> <th>INCH</th> </tr> <tr> <td>4 PLACES</td> <td>± .005</td> <td>± .0002</td> </tr> <tr> <td>3 PLACES</td> <td>± .005</td> <td>± .0002</td> </tr> <tr> <td>2 PLACES</td> <td>± 0.2</td> <td>± .008</td> </tr> <tr> <td>1 PLACE</td> <td>± .005</td> <td>± .0002</td> </tr> </table>		mm	INCH	4 PLACES	± .005	± .0002	3 PLACES	± .005	± .0002	2 PLACES	± 0.2	± .008	1 PLACE	± .005	± .0002	DIMENSION STYLE MM ONLY	SCALE NTS	DESIGN UNITS METRIC	THIRD ANGLE PROJECTION 	DRAWN BY SKL IM01	DATE 2006/08/21	TITLE CUSTOM HEADER C-GRID, SINGLE WAFER HDR, THROU HOLE, VERTICAL, LF	APPROVED BY KWLEE	DATE 2006/09/04	MOLEX INCORPORATED	MATERIAL NO. SEE TABLE	DOCUMENT NO. SD-87914-059	SHEET NO. 6 OF 9
			mm	INCH																											
		4 PLACES	± .005	± .0002																											
		3 PLACES	± .005	± .0002																											
2 PLACES	± 0.2	± .008																													
1 PLACE	± .005	± .0002																													
DRAFT WHERE APPLICABLE MUST REMAIN WITHIN DIMENSIONS	SIZE A3	THIS DRAWING CONTAINS INFORMATION THAT IS PROPRIETARY TO MOLEX INCORPORATED AND SHOULD NOT BE USED WITHOUT WRITTEN PERMISSION																													


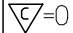
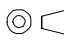
F	10		9		8		7		6		5		4		3		2		1	
	PART NO FOR TRAY PACKAGING	PART NO FOR BULK PACKAGING	CKT SIZE	PLATING TYPE	DIMENSION					PART NO FOR TRAY PACKAGING	PART NO FOR BULK PACKAGING	CKT SIZE	PLATING TYPE	DIMENSION						
					A	B	F	M	P					A	B	F	M	P		
	-----	87914-5201	52	1	66.04	63.50	13.21	8.13	2.79	-----	87914-5204	52	1	66.04	63.50	11.11	6.10	2.72		
	-----	87914-5202	52	2	66.04	63.50	13.21	8.13	2.79	-----	87914-5205	52	2	66.04	63.50	11.11	6.10	2.72		
	-----	87914-5203	52	3	66.04	63.50	13.21	8.13	2.79	-----	87914-5206	52	3	66.04	63.50	11.11	6.10	2.72		
	-----	87914-5401	54	1	68.58	66.04	13.21	8.13	2.79	-----	87914-5404	54	1	68.58	66.04	11.11	6.10	2.72		
	-----	87914-5402	54	2	68.58	66.04	13.21	8.13	2.79	-----	87914-5405	54	2	68.58	66.04	11.11	6.10	2.72		
	-----	87914-5403	54	3	68.58	66.04	13.21	8.13	2.79	-----	87914-5406	54	3	68.58	66.04	11.11	6.10	2.72		
	-----	87914-5601	56	1	71.12	68.58	13.21	8.13	2.79	-----	87914-5604	56	1	71.12	68.58	11.11	6.10	2.72		
	-----	87914-5602	56	2	71.12	68.58	13.21	8.13	2.79	-----	87914-5605	56	2	71.12	68.58	11.11	6.10	2.72		
	-----	87914-5603	56	3	71.12	68.58	13.21	8.13	2.79	-----	87914-5606	56	3	71.12	68.58	11.11	6.10	2.72		
	-----	87914-5801	58	1	73.66	71.12	13.21	8.13	2.79	-----	87914-5804	58	1	73.66	71.12	11.11	6.10	2.72		
	-----	87914-5802	58	2	73.66	71.12	13.21	8.13	2.79	-----	87914-5805	58	2	73.66	71.12	11.11	6.10	2.72		
	-----	87914-5803	58	3	73.66	71.12	13.21	8.13	2.79	-----	87914-5806	58	3	73.66	71.12	11.11	6.10	2.72		
	-----	87914-6001	60	1	76.20	73.66	13.21	8.13	2.79	-----	87914-6004	60	1	76.20	73.66	11.11	6.10	2.72		
	-----	87914-6002	60	2	76.20	73.66	13.21	8.13	2.79	-----	87914-6005	60	2	76.20	73.66	11.11	6.10	2.72		
	-----	87914-6003	60	3	76.20	73.66	13.21	8.13	2.79	-----	87914-6006	60	3	76.20	73.66	11.11	6.10	2.72		

B																			
---	--	--	--	--	--	--	--	--	--	--	--	--	--	--	--	--	--	--	--

A	EWR# 1010 & 1021 EC NO: S2007-0182 DRWNS:SKL IM01 2006/09/11 CHKD:CWLAM 2006/09/12 APPR:KWLEE 2006/09/13	QUALITY SYMBOLS =0 =0	DESCRIPTION REV	GENERAL TOLERANCES (UNLESS SPECIFIED) <table border="1"> <tr> <th></th> <th>mm</th> <th>INCH</th> </tr> <tr> <td>4 PLACES</td> <td>± .005</td> <td>± .0004</td> </tr> <tr> <td>3 PLACES</td> <td>± .005</td> <td>± .0004</td> </tr> <tr> <td>2 PLACES</td> <td>± 0.2</td> <td>± .008</td> </tr> <tr> <td>1 PLACE</td> <td>± .005</td> <td>± .0004</td> </tr> </table>		mm	INCH	4 PLACES	± .005	± .0004	3 PLACES	± .005	± .0004	2 PLACES	± 0.2	± .008	1 PLACE	± .005	± .0004	DIMENSION STYLE MM ONLY	SCALE NTS	DESIGN UNITS METRIC	THIRD ANGLE PROJECTION 	DRAWN BY SKL IM01	DATE 2006/08/21	TITLE CUSTOM HEADER C-GRID, SINGLE WAFER HDR, THROU HOLE, VERTICAL, LF	APPROVED BY KWLEE	DATE 2006/09/04	MOLEX INCORPORATED	MATERIAL NO.	DOCUMENT NO. SD-87914-059	SHEET NO. 7 OF 9
					mm	INCH																										
				4 PLACES	± .005	± .0004																										
				3 PLACES	± .005	± .0004																										
2 PLACES	± 0.2	± .008																														
1 PLACE	± .005	± .0004																														
DRAFT WHERE APPLICABLE MUST REMAIN WITHIN DIMENSIONS										SEE TABLE																						
										SIZE A3		THIS DRAWING CONTAINS INFORMATION THAT IS PROPRIETARY TO MOLEX INCORPORATED AND SHOULD NOT BE USED WITHOUT WRITTEN PERMISSION																				

F	10		9		8		7		6		5		4		3		2		1	
	PART NO FOR TRAY PACKAGING	PART NO FOR BULK PACKAGING	CKT SIZE	PLATING TYPE	DIMENSION					PART NO FOR TRAY PACKAGING	PART NO FOR BULK PACKAGING	CKT SIZE	PLATING TYPE	DIMENSION						
					A	B	F	M	P					A	B	F	M	P		
	-----	87914-6201	62	1	78.74	76.20	13.21	8.13	2.79	-----	87914-6204	62	1	78.74	76.20	11.11	6.10	2.72		
	-----	87914-6202	62	2	78.74	76.20	13.21	8.13	2.79	-----	87914-6205	62	2	78.74	76.20	11.11	6.10	2.72		
	-----	87914-6203	62	3	78.74	76.20	13.21	8.13	2.79	-----	87914-6206	62	3	78.74	76.20	11.11	6.10	2.72		
	-----	87914-6401	64	1	81.28	78.74	13.21	8.13	2.79	-----	87914-6404	64	1	81.28	78.74	11.11	6.10	2.72		
	-----	87914-6402	64	2	81.28	78.74	13.21	8.13	2.79	-----	87914-6405	64	2	81.28	78.74	11.11	6.10	2.72		
	-----	87914-6403	64	3	81.28	78.74	13.21	8.13	2.79	-----	87914-6406	64	3	81.28	78.74	11.11	6.10	2.72		
	-----	87914-6601	66	1	83.82	81.28	13.21	8.13	2.79	-----	87914-6604	66	1	83.82	81.28	11.11	6.10	2.72		
	-----	87914-6602	66	2	83.82	81.28	13.21	8.13	2.79	-----	87914-6605	66	2	83.82	81.28	11.11	6.10	2.72		
	-----	87914-6603	66	3	83.82	81.28	13.21	8.13	2.79	-----	87914-6606	66	3	83.82	81.28	11.11	6.10	2.72		
	-----	87914-6801	68	1	86.36	83.82	13.21	8.13	2.79	-----	87914-6804	68	1	86.36	83.82	11.11	6.10	2.72		
	-----	87914-6802	68	2	86.36	83.82	13.21	8.13	2.79	-----	87914-6805	68	2	86.36	83.82	11.11	6.10	2.72		
	-----	87914-6803	68	3	86.36	83.82	13.21	8.13	2.79	-----	87914-6806	68	3	86.36	83.82	11.11	6.10	2.72		
	-----	87914-7001	70	1	88.90	86.36	13.21	8.13	2.79	-----	87914-7004	70	1	88.90	86.36	11.11	6.10	2.72		
	-----	87914-7002	70	2	88.90	86.36	13.21	8.13	2.79	-----	87914-7005	70	2	88.90	86.36	11.11	6.10	2.72		
	-----	87914-7003	70	3	88.90	86.36	13.21	8.13	2.79	-----	87914-7006	70	3	88.90	86.36	11.11	6.10	2.72		

--	--	--	--	--	--	--	--	--	--	--	--	--	--	--	--	--	--	--	--

EWR# 1010 & 1021 EC NO: S2007-0182 DRWNS:SKL IM01 2006/09/11 CHKD:CWLAM 2006/09/12 APPR:KWLEE 2006/09/13	QUALITY SYMBOLS  = 0  = 0	GENERAL TOLERANCES (UNLESS SPECIFIED)	DIMENSION STYLE MM ONLY	SCALE NTS	DESIGN UNITS METRIC	 THIRD ANGLE PROJECTION
		4 PLACES ± --- ± --- 3 PLACES ± --- ± --- 2 PLACES ± 0.2 ± --- 1 PLACE ± --- ± ---	mm INCH	DRAWN BY SKL IM01 DATE 2006/08/21	TITLE CUSTOM HEADER C-GRID, SINGLE WAFER HDR, THROU HOLE, VERTICAL, LF	
		ANGULAR ± 3 °	APPROVED BY KWLEE DATE 2006/09/04	MATERIAL NO. SEE TABLE	DOCUMENT NO. SD-87914-059	
		DRAFT WHERE APPLICABLE MUST REMAIN WITHIN DIMENSIONS	SIZE A3	THIS DRAWING CONTAINS INFORMATION THAT IS PROPRIETARY TO MOLEX INCORPORATED AND SHOULD NOT BE USED WITHOUT WRITTEN PERMISSION	SHEET NO. 8 OF 9	

F	10		9		8		7		6		5		4		3		2		1		F							
	PART NO FOR TRAY PACKAGING	PART NO FOR BULK PACKAGING	CKT SIZE	PLATING TYPE	DIMENSION					PART NO FOR TRAY PACKAGING	PART NO FOR BULK PACKAGING	CKT SIZE	PLATING TYPE	DIMENSION					PART NO FOR TRAY PACKAGING	PART NO FOR BULK PACKAGING		CKT SIZE	PLATING TYPE	DIMENSION				
					A	B	F	M	P					A	B	F	M	P						A	B	F	M	P
-----	87914-7201	72	1	91.44	88.90	13.21	8.13	2.79	-----	87914-7204	72	1	91.44	88.90	11.11	6.10	2.72	-----	87914-7205	72	2	91.44	88.90	11.11	6.10	2.72		
-----	87914-7202	72	2	91.44	88.90	13.21	8.13	2.79	-----	87914-7206	72	3	91.44	88.90	11.11	6.10	2.72	-----	87914-7207	72	3	91.44	88.90	11.11	6.10	2.72		
-----	87914-7203	72	3	91.44	88.90	13.21	8.13	2.79	-----									-----										
-----	87914-7401	74	1	93.98	91.44	13.21	8.13	2.79	-----	87914-7404	74	1	93.98	91.44	11.11	6.10	2.72	-----	87914-7405	74	2	93.98	91.44	11.11	6.10	2.72		
-----	87914-7402	74	2	93.98	91.44	13.21	8.13	2.79	-----	87914-7406	74	3	93.98	91.44	11.11	6.10	2.72	-----										
-----	87914-7403	74	3	93.98	91.44	13.21	8.13	2.79	-----									-----										
-----	87914-7601	76	1	96.52	93.98	13.21	8.13	2.79	-----	87914-7604	76	1	96.52	93.98	11.11	6.10	2.72	-----	87914-7605	76	2	96.52	93.98	11.11	6.10	2.72		
-----	87914-7602	76	2	96.52	93.98	13.21	8.13	2.79	-----	87914-7606	76	3	96.52	93.98	11.11	6.10	2.72	-----										
-----	87914-7603	76	3	96.52	93.98	13.21	8.13	2.79	-----									-----										
-----	87914-7801	78	1	99.06	96.52	13.21	8.13	2.79	-----	87914-7804	78	1	99.06	96.52	11.11	6.10	2.72	-----	87914-7805	78	2	99.06	96.52	11.11	6.10	2.72		
-----	87914-7802	78	2	99.06	96.52	13.21	8.13	2.79	-----	87914-7806	78	3	99.06	96.52	11.11	6.10	2.72	-----										
-----	87914-7803	78	3	99.06	96.52	13.21	8.13	2.79	-----									-----										
-----	87914-8001	80	1	101.60	99.06	13.21	8.13	2.79	-----	87914-8004	80	1	101.60	99.06	11.11	6.10	2.72	-----	87914-8005	80	2	101.60	99.06	11.11	6.10	2.72		
-----	87914-8002	80	2	101.60	99.06	13.21	8.13	2.79	-----	87914-8006	80	3	101.60	99.06	11.11	6.10	2.72	-----										
-----	87914-8003	80	3	101.60	99.06	13.21	8.13	2.79	-----									-----										

B																				B
---	--	--	--	--	--	--	--	--	--	--	--	--	--	--	--	--	--	--	--	---

A	EWR# 1010 & 1021 EC NO: S2007-0182 DRWNS:SKL IM01 2006/09/11 CHKD:CWLAM 2006/09/12 APPR:KWLEE 2006/09/13	QUALITY SYMBOLS ▽=0 ◻=0	DESCRIPTION REV	GENERAL TOLERANCES (UNLESS SPECIFIED)	DIMENSION STYLE MM ONLY	SCALE NTS	DESIGN UNITS METRIC	THIRD ANGLE PROJECTION			
				4 PLACES ± ---	± ---	DRAWN BY SKL IM01	DATE 2006/08/21	TITLE CUSTOM HEADER C-GRID, SINGLE WAFER HDR, THROU HOLE, VERTICAL, LF			
				3 PLACES ± ---	± ---	CHECKED BY CWLAM	DATE 2006/09/04				
				2 PLACES ± 0.2	± ---	APPROVED BY KWLEE	DATE 2006/09/04	MOLEX INCORPORATED			
1 PLACE ± ---	± ---	ANGULAR ± 3 °		MATERIAL NO.	DOCUMENT NO.	SHEET NO.					
DRAFT WHERE APPLICABLE MUST REMAIN WITHIN DIMENSIONS				SEE TABLE		SD-87914-059		9 OF 9			
SIZE A3 THIS DRAWING CONTAINS INFORMATION THAT IS PROPRIETARY TO MOLEX INCORPORATED AND SHOULD NOT BE USED WITHOUT WRITTEN PERMISSION											



Компания «ЭлектроПласт» предлагает заключение долгосрочных отношений при поставках импортных электронных компонентов на взаимовыгодных условиях!

Наши преимущества:

- Оперативные поставки широкого спектра электронных компонентов отечественного и импортного производства напрямую от производителей и с крупнейших мировых складов;
- Поставка более 17-ти миллионов наименований электронных компонентов;
- Поставка сложных, дефицитных, либо снятых с производства позиций;
- Оперативные сроки поставки под заказ (от 5 рабочих дней);
- Экспресс доставка в любую точку России;
- Техническая поддержка проекта, помощь в подборе аналогов, поставка прототипов;
- Система менеджмента качества сертифицирована по Международному стандарту ISO 9001;
- Лицензия ФСБ на осуществление работ с использованием сведений, составляющих государственную тайну;
- Поставка специализированных компонентов (Xilinx, Altera, Analog Devices, Intersil, Interpoint, Microsemi, Aeroflex, Peregrine, Syfer, Eurofarad, Texas Instrument, Miteq, Cobham, E2V, MA-COM, Hittite, Mini-Circuits, General Dynamics и др.);

Помимо этого, одним из направлений компании «ЭлектроПласт» является направление «Источники питания». Мы предлагаем Вам помощь Конструкторского отдела:

- Подбор оптимального решения, техническое обоснование при выборе компонента;
- Подбор аналогов;
- Консультации по применению компонента;
- Поставка образцов и прототипов;
- Техническая поддержка проекта;
- Защита от снятия компонента с производства.



Как с нами связаться

Телефон: 8 (812) 309 58 32 (многоканальный)

Факс: 8 (812) 320-02-42

Электронная почта: org@eplast1.ru

Адрес: 198099, г. Санкт-Петербург, ул. Калинина, дом 2, корпус 4, литера А.