



BPA[®] low energy

BLUETOOTH[®] PROTOCOL ANALYZER



The Frontline BPA low energy Protocol Analyzer includes powerful Frontline software and the BPA low energy hardware interface.

Key Benefits

- **Analyze NOW** - see events as they occur through live decoding and decryption of encrypted data
- **Extraordinarily portable size and USB-powered** make this the perfect tool for bench or field
- **No Hassles Decoding** - features simple device setup for developers of *Bluetooth* Smart and Smart Ready technologies - just plug into the USB port and go!
- **Excellent Value**
Tailored specifically to low energy analysis, the Frontline BPA low energy features maximum value for the money
- **Industry-best Decodes**
Bluetooth decodes that make for reliable development and problem-solving
- **Maximum Flexibility**
DecoderScript lets you specify decodes for custom protocols
- **Faster to Market**
Reduces debug time with simultaneous live capture, display, decode, filtering and detection of protocol errors
- **Support for CSRMESH and Bluetooth mesh technology**

Bluetooth low energy wireless technology is rapidly changing how the wireless world connects. Consuming only a fraction of the power of Basic Rate/Enhanced Data Rate (BR/EDR) *Bluetooth* wireless technology, *Bluetooth* low energy (*Bluetooth* Smart technology) will allow hundreds of millions of new wireless devices to interoperate within the *Bluetooth* ecosystem. From watches, sports and fitness devices, to wellness, healthcare and more, *Bluetooth* Smart technology is expected to greatly accelerate the wireless evolution.

Tiny Footprint, Huge Tracks

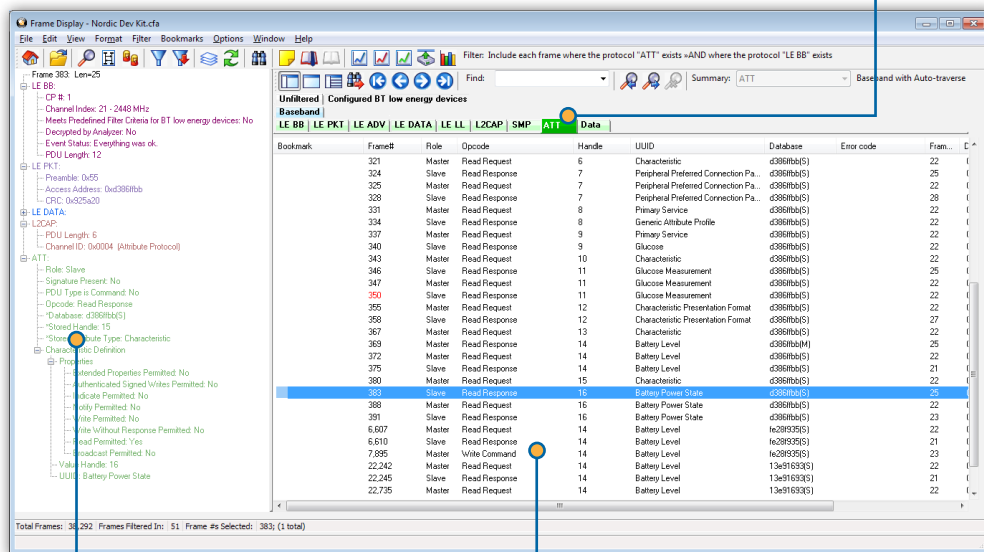
In an increasingly mobile world, it's more important than ever that developers' tools are just as mobile as the devices and technologies they're creating. Frontline puts problem-solving literally in the palm of your hand with the Frontline BPA low energy *Bluetooth* Protocol Analyzer. Smaller than a deck of cards and running on USB power, the Frontline BPA low energy packs a serious punch, decoding all traffic including advertising packets, data packets and LL control packets, and providing visibility into all three advertising channels concurrently, even before the connection is established. A single BPA low energy follows multiple connection requests from the same master to capture the resulting connections.



But powerful tools don't have to be hard to use. With the Frontline BPA low energy, setup is easy and requires no synchronization to devices - just start capturing. Working with custom protocols? No problem. The BPA low energy includes DecoderScript, which allows specifying decodes for custom protocols.

The Frontline BPA low energy *Bluetooth* Protocol Analyzer is the first name in portable, USB-powered, and affordable *Bluetooth* low energy analysis, and features the rich decoding toolset represented by the powerful software at the core of our Frontline family of developer-class protocol analysis products.

Filter Tabs isolate frames by profile or protocol for quick and convenient viewing of specific kinds of data.



Decode Pane shows comprehensive layered decoders of each frame/message with clear, concise descriptions.

Summary Pane displays a one line overview of each data frame/message. Click on any line to reveal detail in multiple panes below.

Hardware Specifications

- **Bus Type:**
USB 2.0 Mini-B
- **Power:**
USB Powered (USB 2.0)
- **Effective Receiver Sensitivity:**
-90.0 dBm for GFSK
- **Dimensions:**
3.5" X 1.75" X .71"
89mm X 44.5mm X 18mm
- **Temperature:**
Storage Temperature: 0° to 65° Celsius
32° to 149° Fahrenheit

Operating Temperature:
5° to 55° Celsius
41° to 131° Fahrenheit
- **Humidity:**
Operating: 10% to 90% RH (noncondensing)

The Frontline BPA® low energy Hardware Interface

The Frontline BPA low energy Protocol Analyzer includes the portable BPA low energy hardware interface, which supports the wireless capture of *Bluetooth* low energy communications.

The BPA low energy hardware interface is one member of an extensive arsenal of technology-specific hardware interfaces, all functioning with the powerful Frontline software. This modular approach allows greater flexibility in protocol analysis and debugging, and provides comprehensive coexistence views over virtually any combination of protocols.

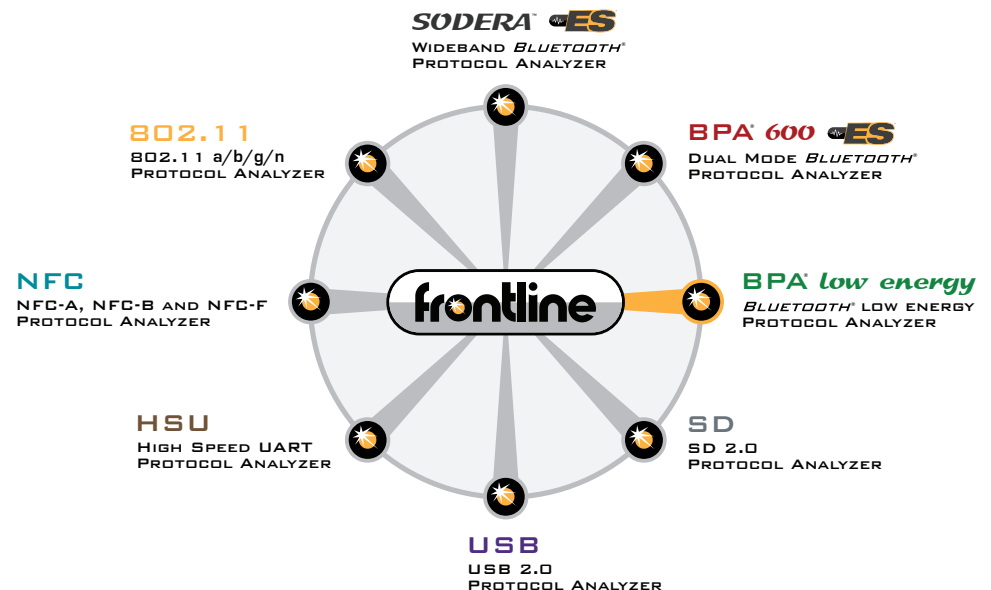


Supported Configurations

- OS Supported: Win 7 and Win 8
- USB Port: USB 2.0 or USB 3.0 High-Speed

Minimum System Requirements

- Processor: Core i5 processor at 2.7 GHz
- RAM: 4 GB
- Free Hard Disk Space: 20 GB



The Frontline Modular Approach

Frontline software is at the core of Frontline protocol analysis, allowing technology-specific hardware interfaces to work individually or in combination with other hardware interfaces. This modular approach gives the developer or analyst the widest possible range of scenarios for debugging complex communications.

To order or for more information:

www.fte.com
sales@fte.com
1.800.359.8570 US & Canada
+1.434.984.4500
Fax: 434.984.4505



TELEDYNE LECROY
Everywhereyoulook™



Компания «ЭлектроПласт» предлагает заключение долгосрочных отношений при поставках импортных электронных компонентов на взаимовыгодных условиях!

Наши преимущества:

- Оперативные поставки широкого спектра электронных компонентов отечественного и импортного производства напрямую от производителей и с крупнейших мировых складов;
- Поставка более 17-ти миллионов наименований электронных компонентов;
- Поставка сложных, дефицитных, либо снятых с производства позиций;
- Оперативные сроки поставки под заказ (от 5 рабочих дней);
- Экспресс доставка в любую точку России;
- Техническая поддержка проекта, помощь в подборе аналогов, поставка прототипов;
- Система менеджмента качества сертифицирована по Международному стандарту ISO 9001;
- Лицензия ФСБ на осуществление работ с использованием сведений, составляющих государственную тайну;
- Поставка специализированных компонентов (Xilinx, Altera, Analog Devices, Intersil, Interpoint, Microsemi, Aeroflex, Peregrine, Syfer, Eurofarad, Texas Instrument, Miteq, Cobham, E2V, MA-COM, Hittite, Mini-Circuits, General Dynamics и др.);

Помимо этого, одним из направлений компании «ЭлектроПласт» является направление «Источники питания». Мы предлагаем Вам помощь Конструкторского отдела:

- Подбор оптимального решения, техническое обоснование при выборе компонента;
- Подбор аналогов;
- Консультации по применению компонента;
- Поставка образцов и прототипов;
- Техническая поддержка проекта;
- Защита от снятия компонента с производства.



Как с нами связаться

Телефон: 8 (812) 309 58 32 (многоканальный)

Факс: 8 (812) 320-02-42

Электронная почта: org@eplast1.ru

Адрес: 198099, г. Санкт-Петербург, ул. Калинина, дом 2, корпус 4, литера А.