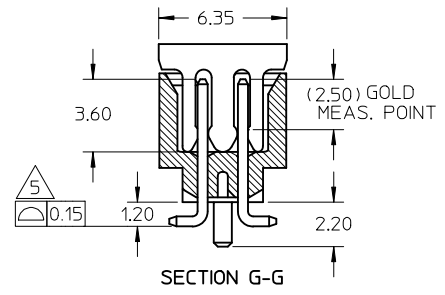
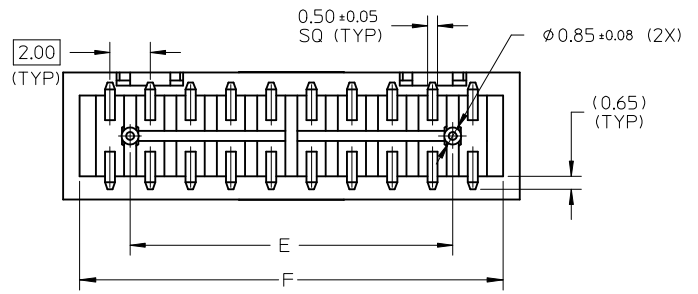
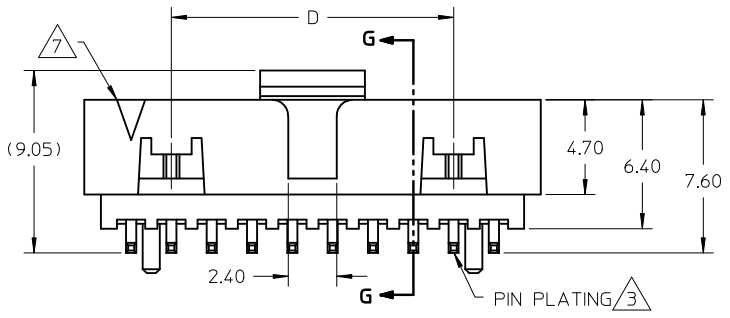


RECOMMENDED PCB PATTERN



SECTION G-G

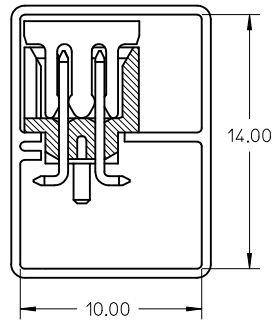
CKT SIZE	A	B	C	D	E	F
4	6.65	4.85	2.00	-----	-----	5.00
6	8.65	6.85	4.00	-----	2.00	7.00
8	10.65	8.85	6.00	-----	4.00	9.00
10	12.65	10.85	8.00	-----	6.00	11.00
12	14.65	12.85	10.00	-----	8.00	13.00
14	16.65	14.85	12.00	8.00	10.00	15.00
16	18.65	16.85	14.00	10.00	12.00	17.00
18	20.65	18.85	16.00	12.00	14.00	19.00
20	22.65	20.85	18.00	14.00	16.00	21.00
22	24.65	22.85	20.00	16.00	18.00	23.00
24	26.65	24.85	22.00	18.00	20.00	25.00
26	28.65	26.85	24.00	20.00	22.00	27.00
28	30.65	28.85	26.00	22.00	24.00	29.00
30	32.65	30.85	28.00	24.00	26.00	31.00
32	34.65	32.85	30.00	26.00	28.00	33.00
34	36.65	34.85	32.00	28.00	30.00	35.00
36	38.65	36.85	34.00	30.00	32.00	37.00
38	40.65	38.85	36.00	32.00	34.00	39.00
40	42.65	40.85	38.00	34.00	36.00	41.00
42	44.65	42.85	40.00	36.00	38.00	43.00
44	46.65	44.85	42.00	38.00	40.00	45.00
46	48.65	46.85	44.00	40.00	42.00	47.00
48	50.65	48.85	46.00	42.00	44.00	49.00
50	52.65	50.85	48.00	44.00	46.00	51.00

- NOTES:
- FOR ILLUSTRATION PURPOSES, 20 CIRCUIT SIZE WAFER IS SHOWN.
  - MATERIAL :  
HOUSING & CAP : 30% G.F., NYLON 46, UL94V-0, COLOR BLACK.  
PIN : 0.50MM SQ.PHOSPHOR BRONZE.
  - PLATING : SEE SHEET 4 FOR PART NUMBER LEGEND
  - PRODUCT SPECIFICATION PS-87831-027 APPLIES.
  - COPLANARITY IS TO BE MEASURED BY RESTING THE SOLDER TAIL ON A GAUGE SURFACE.
  - NO SIDE LOCKING SLOT FROM 4 TO 12 CKT SIZE.
  - CKT 4 & 6 HAS NO IDENTIFICATION TAG.
  - POSITION OF CAP TO BE LOCATED AT CENTER OF DIMENSION 'A' REGARDLESS OF CIRCUIT SIZE.
  - TOP SURFACE OF CAP TO BE FLAT FOR THE PURPOSE OF PICK-&PLACE BY VACUUM SUCTION NOZZLE.
  - THIS HEADER MATES WITH MOLEX:
    - CRIMP RECEPTACLE HOUSING, 51110 SERIES WITH CRIMP TERMINAL, 50394 SERIES.
    - 2MM MILLIGRID DUAL ROW IDT, 87568 SERIES.
  - NO CENTRE POLARIZATION SLOT FOR CKT SIZE 4 AND 6.
  - PARTS SHALL BE PACKED IN MOISTURE BARRIER BAG.

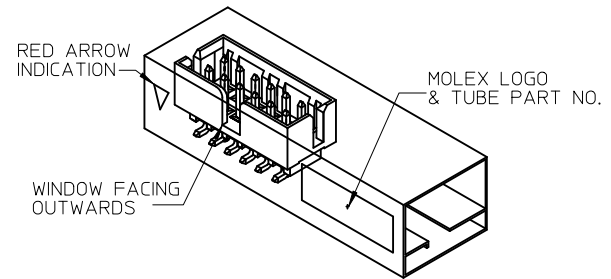
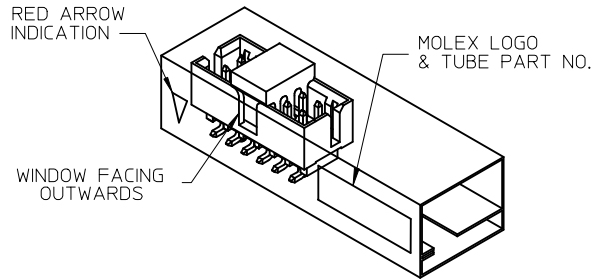
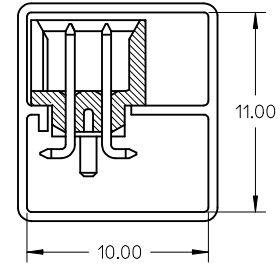
CORRECT PART ILLUSTRATION EC NO: S2012-0647 DRWN:SKANG CHKD:ATSEE APPR:MLONG	REV DESCRIPTION	QUALITY SYMBOLS ▽=0 ◻=0	GENERAL TOLERANCES (UNLESS SPECIFIED)		DIMENSION STYLE MM ONLY		SCALE NTS	DESIGN UNITS METRIC	THIRD ANGLE PROJECTION	
			mm	INCH	DRAWN BY ATSEE	DATE 2003/10/14	TITLE MGRID, SHROUDED HEADER SMT, W/PEGS/CAP FOR PICK & PLACE IN TUBE AND T&R			
			4 PLACES ± --- ± ---	3 PLACES ± --- ± ---	CHECKED BY KCLING	DATE 2003/11/07	MOLEX INCORPORATED			
			2 PLACES ± 0.2 ± ---	1 PLACE ± --- ± ---	APPROVED BY SKTOH	DATE 2003/11/07	DOCUMENT NO. SD-87832-006			
DRAFT WHERE APPLICABLE MUST REMAIN WITHIN DIMENSIONS			ANGULAR ± 3 °		MATERIAL NO. SEE TABLE		SHEET NO. 1 OF 4			
A13			SIZE A3		THIS DRAWING CONTAINS INFORMATION THAT IS PROPRIETARY TO MOLEX INCORPORATED AND SHOULD NOT BE USED WITHOUT WRITTEN PERMISSION					

TUBE PACKAGING

WITH CAP IN TUBE



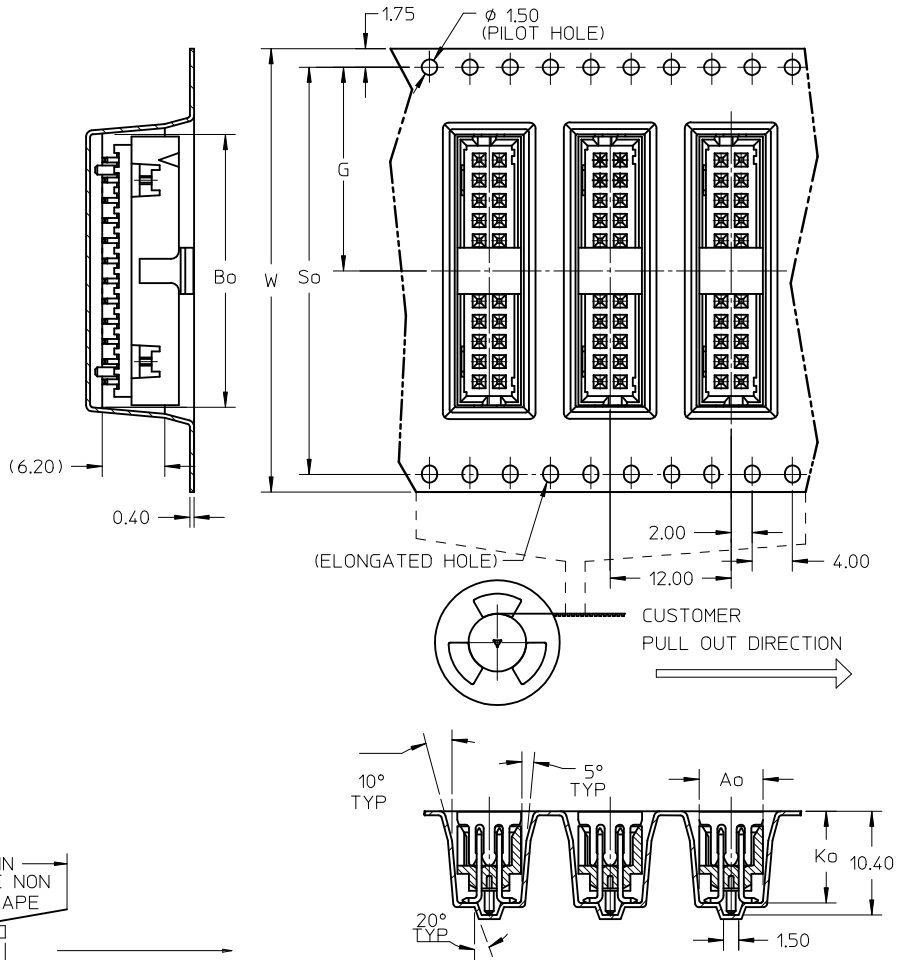
WITHOUT CAP IN TUBE



REF : ORIENTATION OF PART IN TUBE  
(FOR THE REFERENCE OF PART/TUBE ASSEMBLY)

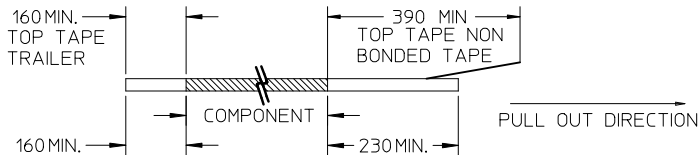
CORRECT PART ILLUSTRATION EC NO: S2012-0647 DRWN:SKANG 2012/02/22 CHKD:ATSEE 2012/04/30 APPR:MLONG 2012/05/03	DESCRIPTION REV	QUALITY SYMBOLS	GENERAL TOLERANCES (UNLESS SPECIFIED)		DIMENSION STYLE MM ONLY		SCALE NTS	DESIGN UNITS METRIC	THIRD ANGLE PROJECTION			
		$\nabla=0$ $\sphericalangle=0$	mm	INCH	DRAWN BY ATSEE	DATE 2003/10/14	TITLE MGRID, SHROUDED HEADER SMT, W/PEGS/CAP FOR PICK & PLACE IN TUBE AND T&R					
			4 PLACES	± ---	± ---	CHECKED BY KCLING	DATE 2003/11/07	MATERIAL NO. SKTOH 2003/11/07				
			3 PLACES	± ---	± ---	APPROVED BY DATE		DOCUMENT NO. SD-87832-006				
		2 PLACES	± 0.2	± ---	MATERIAL NO. SEE TABLE		SHEET NO. 2 OF 4					
		1 PLACE	± ---	± ---	SIZE A3		THIS DRAWING CONTAINS INFORMATION THAT IS PROPRIETARY TO MOLEX INCORPORATED AND SHOULD NOT BE USED WITHOUT WRITTEN PERMISSION					
			ANGULAR ± 3 °									
			DRAFT WHERE APPLICABLE MUST REMAIN WITHIN DIMENSIONS									

EMBOSSED CARRIER TAPE LAYOUT  
24 CKT USE FOR ILLUSTRATION ONLY



NOTES:

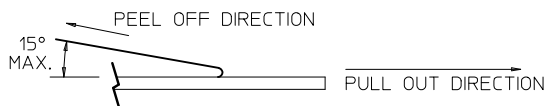
1. LEADER AND TRAILER TAPE



TAIL PART (EMPTY)

LEADER PART (EMPTY)

2. PEELING OFF FORCE OF THE TOP TAPE: 20-80gf.  
(PEELING DIRECTION AS SHOWN IN FOLLOWING FIGURE)



3. PACKAGING STANDARD IS AS PER EIA-481.

CORRECT PART ILLUSTRATION EC NO: S2012-0647 DRWN:SKANG 2012/02/22 CHKD:ATSEE 2012/04/30 APPR:MLONG 2012/05/03	QUALITY SYMBOLS	GENERAL TOLERANCES (UNLESS SPECIFIED)		DIMENSION STYLE	SCALE	DESIGN UNITS	THIRD ANGLE PROJECTION	
	▽=0 ∠=0	mm	INCH	MM ONLY	NTS	METRIC		
		4 PLACES ± --- ± ---	3 PLACES ± --- ± ---	2 PLACES ± 0.2 ± ---	1 PLACE ± --- ± ---	DRAWN BY ATSEE DATE 2003/10/14		TITLE
		ANGULAR ± 3 °		APPROVED BY SKTOH DATE 2003/11/07		MATERIAL NO. SEE TABLE		DOCUMENT NO. SD-87832-006
	DRAFT WHERE APPLICABLE MUST REMAIN WITHIN DIMENSIONS		SIZE A3		THIS DRAWING CONTAINS INFORMATION THAT IS PROPRIETARY TO MOLEX INCORPORATED AND SHOULD NOT BE USED WITHOUT WRITTEN PERMISSION			

MGRID, SHROUDED HEADER  
SMT, W/PEGS/CAP FOR PICK  
& PLACE IN TUBE AND T&R

MOLEX INCORPORATED

SD-87832-006

3 OF 4

10 9 8 7 6 5 4 3 2 1

REG. OPTION	P/N W/O CAP IN TUBE	P/N W/CAP IN TUBE	P/N W/CAP IN TAPE & REEL	CKT SIZE	DIMENSION					
					W	G	Bo	So	Ao	Ko
NO	87832-04*0	87832-04*2	87832-51*2	4	16.00	7.50	7.15	-----	6.40	9.30
YES	87832-06*0	87832-06*2	87832-52*2	6	24.00	11.50	9.15	-----	6.40	9.30
YES	87832-08*0	87832-08*2	87832-53*2	8	24.00	11.50	11.05	-----	6.40	9.30
YES	87832-10*0	87832-10*2	87832-54*2	10	24.00	11.50	13.05	-----	6.40	9.30
YES	87832-12*0	87832-12*2	87832-55*2	12	32.00	14.20	15.15	28.40	6.85	9.30
YES	87832-14*0	87832-14*2	87832-56*2	14	32.00	14.20	17.05	28.40	6.40	9.30
YES	87832-16*0	87832-16*2	87832-57*2	16	32.00	14.20	19.05	28.40	6.40	9.30
YES	87832-18*0	87832-18*2	87832-58*2	18	44.00	20.20	21.05	40.40	6.40	9.30
YES	87832-20*0	87832-20*2	87832-59*2	20	44.00	20.20	23.05	40.40	6.40	9.30
YES	87832-22*0	87832-22*2	87832-60*2	22	44.00	20.20	25.05	40.40	6.40	9.30
YES	87832-24*0	87832-24*2	87832-61*2	24	44.00	20.20	27.05	40.40	6.40	9.30
YES	87832-26*0	87832-26*2	87832-62*2	26	44.00	20.20	29.05	40.40	6.40	9.30
YES	87832-28*0	87832-28*2	87832-63*2	28	56.00	26.20	31.05	52.40	6.40	9.30
YES	87832-30*0	87832-30*2	87832-64*2	30	56.00	26.20	33.05	52.40	6.40	9.30
YES	87832-32*0	87832-32*2	87832-65*2	32	56.00	26.20	35.05	52.40	6.40	9.30
YES	87832-34*0	87832-34*2	87832-66*2	34	56.00	26.20	37.05	52.40	6.40	9.30
YES	87832-36*0	87832-36*2	-----	36	-----	-----	-----	-----	-----	-----
YES	87832-38*0	87832-38*2	-----	38	-----	-----	-----	-----	-----	-----
YES	87832-40*0	87832-40*2	87832-69*2	40	56.00	26.20	43.05	52.40	6.40	9.30
YES	87832-42*0	87832-42*2	-----	42	-----	-----	-----	-----	-----	-----
YES	87832-44*0	87832-44*2	87832-71*2	44	56.00	26.20	46.80	52.40	6.40	9.30
YES	87832-46*0	87832-46*2	87832-72*2	46	56.00	26.20	47.05	52.40	6.40	9.30
YES	87832-48*0	87832-48*2	-----	48	-----	-----	-----	-----	-----	-----
YES	87832-50*0	87832-50*2	87832-74*2	50	72.00	34.20	53.05	68.40	6.40	9.30

PLS REFER TO PART 87832-\*\*08 FOR CENTER LOCKING SLOT OPTION.


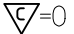
PART NUMBER LEGEND:

87832- \* \* \* \*

PLATING OPTION

2 - 0.38um/15uin GOLD IN CONTACT AREA AND 1.88um/75uin MIN. MATT TIN IN SOLDER TAIL AREA OVER 1.27um/50uin MIN.NICKEL OVERALL.

6 - 0.05-0.13um/2-5uin GOLD IN CONTACT AREA AND 1.88um/75uin MIN. MATT TIN IN SOLDER TAIL AREA OVER 1.27um/50uin MIN.NICKEL OVERALL.

<p><b>CORRECT PART ILLUSTRATION</b>                  EC NO: S2012-0647                  DRWN:SKANG                  CHKD:ATSEE                  APPR:MLONG</p>	<p>2012/02/22                  2012/04/30                  2012/05/03</p>	<p>QUALITY SYMBOLS   = 0   = 0.2</p>	<p>GENERAL TOLERANCES (UNLESS SPECIFIED)</p>		<p>DIMENSION STYLE                  MM ONLY</p>		<p>SCALE                  NTS</p>	<p>DESIGN UNITS                  METRIC</p>	<p>THIRD ANGLE PROJECTION</p>																											
				<table border="1"> <tr><th></th><th>mm</th><th>INCH</th></tr> <tr><td>4 PLACES</td><td>± ---</td><td>± ---</td></tr> <tr><td>3 PLACES</td><td>± ---</td><td>± ---</td></tr> <tr><td>2 PLACES</td><td>± 0.2</td><td>± ---</td></tr> <tr><td>1 PLACE</td><td>± ---</td><td>± ---</td></tr> </table>		mm	INCH	4 PLACES	± ---	± ---	3 PLACES	± ---	± ---	2 PLACES	± 0.2	± ---	1 PLACE	± ---	± ---	<table border="1"> <tr><th>DRAWN BY</th><th>DATE</th></tr> <tr><td>ATSEE</td><td>2003/10/14</td></tr> <tr><th>CHECKED BY</th><th>DATE</th></tr> <tr><td>KCLING</td><td>2003/11/07</td></tr> <tr><th>APPROVED BY</th><th>DATE</th></tr> <tr><td>SKTOH</td><td>2003/11/07</td></tr> </table>	DRAWN BY	DATE	ATSEE	2003/10/14	CHECKED BY	DATE	KCLING	2003/11/07	APPROVED BY	DATE	SKTOH	2003/11/07	<p>TITLE                  MGRID, SHROUDED HEADER SMT, W/PEGS/CAP FOR PICK &amp; PLACE IN TUBE AND T&amp;R</p>		<p>MOLEX MOLEX INCORPORATED</p>	
			mm	INCH																																
	4 PLACES		± ---	± ---																																
3 PLACES	± ---	± ---																																		
2 PLACES	± 0.2	± ---																																		
1 PLACE	± ---	± ---																																		
DRAWN BY	DATE																																			
ATSEE	2003/10/14																																			
CHECKED BY	DATE																																			
KCLING	2003/11/07																																			
APPROVED BY	DATE																																			
SKTOH	2003/11/07																																			
<p>DRAFT WHERE APPLICABLE MUST REMAIN WITHIN DIMENSIONS</p>	<p>SEE TABLE</p>	<p>SD-87832-006</p>	<p>4 OF 4</p>																																	
<p>A13</p>	<p>REV</p>	<p>SIZE                  A3</p>	<p>THIS DRAWING CONTAINS INFORMATION THAT IS PROPRIETARY TO MOLEX INCORPORATED AND SHOULD NOT BE USED WITHOUT WRITTEN PERMISSION</p>																																	

9 8 7 6 5 4 3 2 1



Компания «ЭлектроПласт» предлагает заключение долгосрочных отношений при поставках импортных электронных компонентов на взаимовыгодных условиях!

Наши преимущества:

- Оперативные поставки широкого спектра электронных компонентов отечественного и импортного производства напрямую от производителей и с крупнейших мировых складов;
- Поставка более 17-ти миллионов наименований электронных компонентов;
- Поставка сложных, дефицитных, либо снятых с производства позиций;
- Оперативные сроки поставки под заказ (от 5 рабочих дней);
- Экспресс доставка в любую точку России;
- Техническая поддержка проекта, помощь в подборе аналогов, поставка прототипов;
- Система менеджмента качества сертифицирована по Международному стандарту ISO 9001;
- Лицензия ФСБ на осуществление работ с использованием сведений, составляющих государственную тайну;
- Поставка специализированных компонентов (Xilinx, Altera, Analog Devices, Intersil, Interpoint, Microsemi, Aeroflex, Peregrine, Syfer, Eurofarad, Texas Instrument, Miteq, Cobham, E2V, MA-COM, Hittite, Mini-Circuits, General Dynamics и др.);

Помимо этого, одним из направлений компании «ЭлектроПласт» является направление «Источники питания». Мы предлагаем Вам помощь Конструкторского отдела:

- Подбор оптимального решения, техническое обоснование при выборе компонента;
- Подбор аналогов;
- Консультации по применению компонента;
- Поставка образцов и прототипов;
- Техническая поддержка проекта;
- Защита от снятия компонента с производства.



#### Как с нами связаться

**Телефон:** 8 (812) 309 58 32 (многоканальный)

**Факс:** 8 (812) 320-02-42

**Электронная почта:** [org@eplast1.ru](mailto:org@eplast1.ru)

**Адрес:** 198099, г. Санкт-Петербург, ул. Калинина, дом 2, корпус 4, литера А.