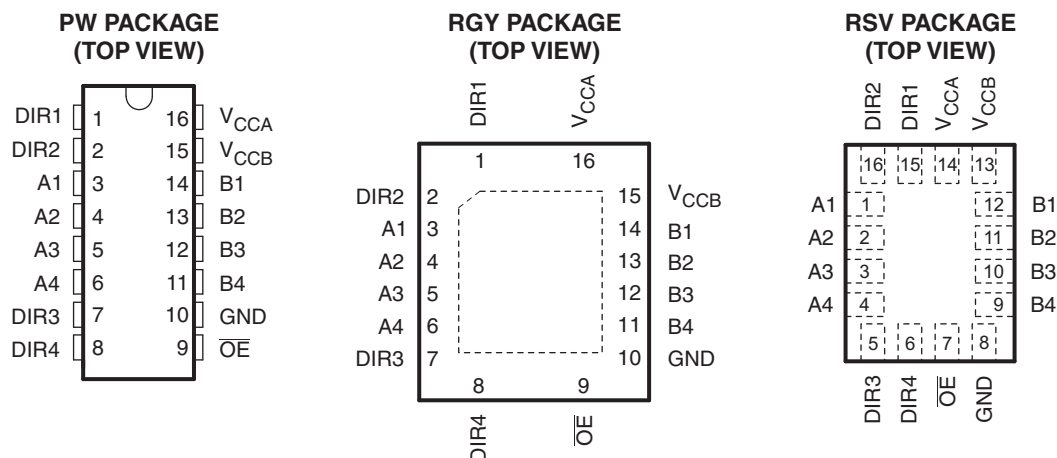


4-BIT DUAL-SUPPLY BUS TRANSCEIVER WITH CONFIGURABLE VOLTAGE TRANSLATION AND 3-STATE OUTPUTS

FEATURES

- Each Channel Has an Independent DIR Control Input
- Control Inputs V_{IH}/V_{IL} Levels Are Referenced to V_{CCA} Voltage
- Fully Configurable Dual-Rail Design Allows Each Port to Operate Over the Full 1.2-V to 3.6-V Power-Supply Range
- I/Os Are 4.6-V Tolerant
- I_{off} Supports Partial Power-Down-Mode Operation
- Typical Data Rates
 - 380 Mbps (1.8-V to 3.3-V Translation)
 - 200 Mbps (<1.8-V to 3.3-V Translation)
 - 200 Mbps (Translate to 2.5 V or 1.8 V)
 - 150 Mbps (Translate to 1.5 V)
 - 100 Mbps (Translate to 1.2 V)
- Latch-Up Performance Exceeds 100 mA Per JESD 78, Class II
- ESD Protection Exceeds the Following Levels (tested per JESD 22)
 - 8000-V Human-Body Model (A114-A)
 - 250-V Machine Model (A115-A)
 - 1500-V Charged-Device Model (C101)



DESCRIPTION/ORDERING INFORMATION

This 4-bit noninverting bus transceiver uses two separate configurable power-supply rails. The A port is designed to track V_{CCA} . V_{CCA} accepts any supply voltage from 1.2 V to 3.6 V. The B port is designed to track V_{CCB} . V_{CCB} accepts any supply voltage from 1.2 V to 3.6 V. The SN74AVC4T774 is optimized to operate with V_{CCA}/V_{CCB} set at 1.4 V to 3.6 V. It is operational with V_{CCA}/V_{CCB} as low as 1.2 V. This allows for universal low-voltage bidirectional translation between any of the 1.2-V, 1.5-V, 1.8-V, 2.5-V, and 3.3-V voltage nodes.



Please be aware that an important notice concerning availability, standard warranty, and use in critical applications of Texas Instruments semiconductor products and disclaimers thereto appears at the end of this data sheet.

DESCRIPTION/ORDERING INFORMATION (CONTINUED)

The SN74AVC4T774 is designed for asynchronous communication between data buses. The logic levels of the direction-control (DIR) input and the output-enable (\overline{OE}) input activate either the B-port outputs or the A-port outputs or place both output ports in the high-impedance mode. The device transmits data from the A bus to the B bus when the B outputs are activated, and from the B bus to the A bus when the A outputs are activated. The input circuitry on both A and B ports is always active and must have a logic HIGH or LOW level applied to prevent excess I_{CC} and I_{CCZ} .

The SN74AVC4T774 is designed so that the control pins (DIR1, DIR2, DIR3, DIR4, and \overline{OE}) are supplied by V_{CCA} .

This device is fully specified for partial-power-down applications using I_{off} . The I_{off} circuitry disables the outputs, preventing damaging current backflow through the device when it is powered down.

The V_{CC} isolation feature ensures that if either V_{CC} input is at GND, then both ports are in the high-impedance state.

To ensure the high-impedance state during power up or power down, \overline{OE} should be tied to V_{CCA} through a pullup resistor; the minimum value of the resistor is determined by the current-sinking capability of the driver.

Since this device has CMOS inputs, it is very important to not allow them to float. If the inputs are not driven to either a high V_{CC} state, or a low GND state, an undesirable larger than expected I_{CC} current may result. Since the input voltage settlement is governed by many factors (e.g. capacitance, board-layout, package inductance, surrounding conditions, etc.), ensuring that they these inputs are kept out of erroneous switching states and tying them to either a high or a low level minimizes the leakage-current.

ORDERING INFORMATION

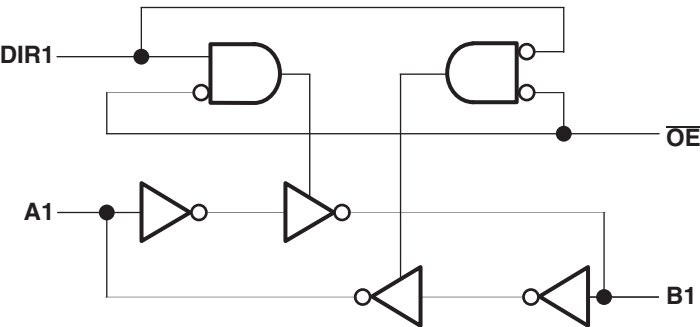
| T_A | PACKAGE ⁽¹⁾⁽²⁾ | | ORDERABLE PART NUMBER | TOP-SIDE MARKING |
|---------------|---------------------------|---------------|-----------------------|------------------|
| –40°C to 85°C | QFN – RGY | Tape and reel | SN74AVC4T774RGYR | WT774 |
| | QFN – RSV | Tape and reel | SN74AVC4T774RSVR | ZVK |
| | TSSOP – PW | Tube | SN74AVC4T774PW | WT774 |
| | | Tape and reel | SN74AVC4T774PWR | |

- (1) Package drawings, thermal data, and symbolization are available at www.ti.com/packaging.
(2) For the most current package and ordering information, see the Package Option Addendum at the end of this document, or see the TI website at www.ti.com.

FUNCTION TABLE
(Each Bit)

| CONTROL INPUTS | | OUTPUT CIRCUITS | | OPERATION |
|-----------------|-----|-----------------|---------|------------------|
| \overline{OE} | DIR | A PORT | B PORT | |
| L | L | Enabled | Hi-Z | B data to A data |
| L | H | Hi-Z | Enabled | A data to B data |
| H | X | Hi-Z | Hi-Z | Isolation |

LOGIC DIAGRAM (POSITIVE LOGIC)⁽¹⁾



(1) Shown for a single channel

TYPICAL APPLICATION

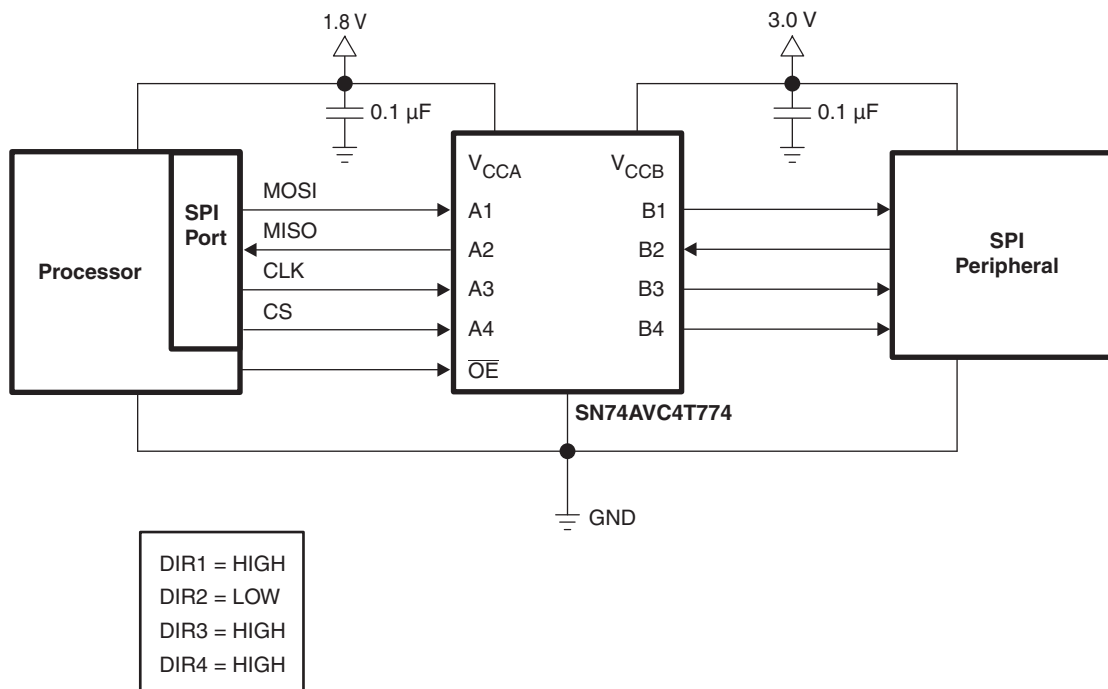


Figure 1. Typical Application of the SN74AVC4T774

ABSOLUTE MAXIMUM RATINGS⁽¹⁾

over operating free-air temperature range (unless otherwise noted)

| | | MIN | MAX | UNIT |
|--------------------------------------|---|--------------------|------|------------------------|
| V _{CCA} V _{CCB} | Supply voltage range | −0.5 | 4.6 | V |
| V _I | Input voltage range ⁽²⁾ | I/O ports (A port) | −0.5 | 4.6 |
| | | I/O ports (B port) | −0.5 | 4.6 |
| | | Control inputs | −0.5 | 4.6 |
| V _O | Voltage range applied to any output in the high-impedance or power-off state ⁽²⁾ | A port | −0.5 | 4.6 |
| | | B port | −0.5 | 4.6 |
| V _O | Voltage range applied to any output in the high or low state ⁽²⁾⁽³⁾ | A port | −0.5 | V _{CCA} + 0.5 |
| | | B port | −0.5 | V _{CCB} + 0.5 |
| I _{IK} | Input clamp current | V _I < 0 | −50 | mA |
| I _{OK} | Output clamp current | V _O < 0 | −50 | mA |
| I _O | Continuous output current | | ±50 | mA |
| | Continuous current through V _{CCA} , V _{CCB} , or GND | | ±100 | mA |
| T _{stg} | Storage temperature range. | −65 | 150 | °C |

- (1) Stresses beyond those listed under "absolute maximum ratings" may cause permanent damage to the device. These are stress ratings only, and functional operation of the device at these or any other conditions beyond those indicated under "recommended operating conditions" is not implied. Exposure to absolute-maximum-rated conditions for extended periods may affect device reliability.
- (2) The input voltage and output negative-voltage ratings may be exceeded if the input and output current ratings are observed.
- (3) The output positive-voltage rating may be exceeded up to 4.6 V maximum if the output current rating is observed.

PACKAGE THERMAL IMPEDANCE

| | | | UNIT | |
|---------------|---------------------------|----------------------------|------|------|
| θ_{JA} | Package thermal impedance | PW package ⁽¹⁾ | 108 | °C/W |
| | | RGY package ⁽²⁾ | 39 | |
| | | RSV package ⁽¹⁾ | 184 | |

(1) The package thermal impedance is calculated in accordance with JESD 51-7.

(2) The package thermal impedance is calculated in accordance with JESD 51-5.

RECOMMENDED OPERATING CONDITIONS⁽¹⁾⁽²⁾⁽³⁾

| | | | V _{CCI} | V _{CCO} | MIN | MAX | UNIT |
|------------------|------------------------------------|---|------------------|------------------|-------------------------|------------------|------|
| V _{CCA} | Supply voltage | | | | 1.2 | 3.6 | V |
| V _{CCB} | Supply voltage | | | | 1.2 | 3.6 | V |
| V _{IH} | High-level input voltage | Data inputs ⁽⁴⁾ | 1.2 V to 1.95 V | | V _{CCI} × 0.65 | | V |
| | | | 1.95 V to 2.7 V | | 1.6 | | |
| | | | 2.7 V to 3.6 V | | 2 | | |
| V _{IL} | Low-level input voltage | Data inputs ⁽⁴⁾ | 1.2 V to 1.95 V | | V _{CCI} × 0.35 | | V |
| | | | 1.95 V to 2.7 V | | 0.7 | | |
| | | | 2.7 V to 3.6 V | | 0.8 | | |
| V _{IH} | High-level input voltage | DIR (referenced to V _{CCA}) ⁽⁵⁾ (DIRx, \overline{OE}) | 1.2 V to 1.95 V | | V _{CCA} × 0.65 | | V |
| | | | 1.95 V to 2.7 V | | 1.6 | | |
| | | | 2.7 V to 3.6 V | | 2 | | |
| V _{IL} | Low-level input voltage | DIR (referenced to V _{CCA}) ⁽⁵⁾ (DIRx, \overline{OE}) | 1.2 V to 1.95 V | | V _{CCA} × 0.35 | | V |
| | | | 1.95 V to 2.7 V | | 0.7 | | |
| | | | 2.7 V to 3.6 V | | 0.8 | | |
| V _I | Input voltage | | | | 0 | 3.6 | V |
| V _O | Output voltage | Active state | | | 0 | V _{CCO} | V |
| | | 3-state | | | 0 | 3.6 | |
| I _{OH} | High-level output current | | | 1.1 V to 1.2 V | −3 | | mA |
| | | | | 1.4 V to 1.6 V | −6 | | |
| | | | | 1.65 V to 1.95 V | −8 | | |
| | | | | 2.3 V to 2.7 V | −9 | | |
| | | | | 3 V to 3.6 V | −12 | | |
| I _{OL} | Low-level output current | | | 1.1 V to 1.2 V | 3 | | mA |
| | | | | 1.4 V to 1.6 V | 6 | | |
| | | | | 1.65 V to 1.95 V | 8 | | |
| | | | | 2.3 V to 2.7 V | 9 | | |
| | | | | 3 V to 3.6 V | 12 | | |
| Δt/Δv | Input transition rise or fall rate | | | | 5 | | ns/V |
| T _A | Operating free-air temperature | | | | −40 | 85 | °C |

(1) V_{CCI} is the V_{CC} associated with the input port.

(2) V_{CCO} is the V_{CC} associated with the output port.

(3) All unused data inputs of the device must be held at V_{CCI} or GND to ensure proper device operation. Refer to the TI application report, *Implications of Slow or Floating CMOS Inputs*, literature number SCBA004.

(4) For V_{CCI} values not specified in the data sheet, V_{IH} min = $V_{CCI} \times 0.7$ V, V_{IL} max = $V_{CCI} \times 0.3$ V

(5) For V_{CCA} values not specified in the data sheet, V_{IH} min = $V_{CCA} \times 0.7$ V, V_{IL} max = $V_{CCA} \times 0.3$ V

ELECTRICAL CHARACTERISTICS⁽¹⁾⁽²⁾⁽³⁾

over recommended operating free-air temperature range (unless otherwise noted)

| PARAMETER | TEST CONDITIONS | | V_{CCA} | V_{CCB} | $T_A = 25^\circ\text{C}$ | | | $-40^\circ\text{C to } 85^\circ\text{C}$ | | UNIT |
|---------------------|------------------------------|---|----------------|----------------|--------------------------|-------------|------------|--|---------|---------------|
| | | | | | MIN | TYP | MAX | MIN | MAX | |
| V_{OH} | $I_{OH} = -100\ \mu\text{A}$ | $V_I = V_{IH}$ | 1.2 V to 3.6 V | 1.2 V to 3.6 V | | | | $V_{CCO} - 0.2$ | | V |
| | $I_{OH} = -3\ \text{mA}$ | | 1.2 V | 1.2 V | | 0.95 | | | | |
| | $I_{OH} = -6\ \text{mA}$ | | 1.4 V | 1.4 V | | | | 1.05 | | |
| | $I_{OH} = -8\ \text{mA}$ | | 1.65 V | 1.65 V | | | | 1.2 | | |
| | $I_{OH} = -9\ \text{mA}$ | | 2.3 V | 2.3 V | | | | 1.75 | | |
| | $I_{OH} = -12\ \text{mA}$ | | 3 V | 3 V | | | | 2.3 | | |
| V_{OL} | $I_{OL} = 100\ \mu\text{A}$ | $V_I = V_{IL}$ | 1.2 V to 3.6 V | 1.2 V to 3.6 V | | | | | 0.2 | V |
| | $I_{OL} = 3\ \text{mA}$ | | 1.2 V | 1.2 V | | 0.25 | | | | |
| | $I_{OL} = 6\ \text{mA}$ | | 1.4 V | 1.4 V | | | | | 0.35 | |
| | $I_{OL} = 8\ \text{mA}$ | | 1.65 V | 1.65 V | | | | | 0.45 | |
| | $I_{OL} = 9\ \text{mA}$ | | 2.3 V | 2.3 V | | | | | 0.55 | |
| | $I_{OL} = 12\ \text{mA}$ | | 3 V | 3 V | | | | | 0.7 | |
| I_I | Control inputs | $V_I = V_{CCA}$ or GND | 1.2 V to 3.6 V | 1.2 V to 3.6 V | | ± 0.025 | ± 0.25 | | ± 1 | μA |
| I_{off} | A or B port | V_I or $V_O = 0$ to 3.6 V | 0 V | 0 V to 3.6 V | | ± 0.1 | ± 1 | | ± 5 | μA |
| | | | 0 V to 3.6 V | 0 V | | ± 0.1 | ± 1 | | ± 5 | |
| I_{OZ} | A or B port | $V_O = V_{CCO}$ or GND, $V_I = V_{CCI}$ or GND, $\overline{OE} = V_{IH}$ | 3.6 V | 3.6 V | | ± 0.5 | ± 2.5 | | ± 5 | μA |
| I_{CCA} | | $V_I = V_{CCI}$ or GND, $I_O = 0$ | 1.2 V to 3.6 V | 1.2 V to 3.6 V | | | | | 8 | μA |
| | | | 0 V | 0 V to 3.6 V | | | | | -2 | |
| | | | 0 V to 3.6 V | 0 V | | | | | 8 | |
| I_{CCB} | | $V_I = V_{CCI}$ or GND, $I_O = 0$ | 1.2 V to 3.6 V | 1.2 V to 3.6 V | | | | | 8 | μA |
| | | | 0 V | 0 V to 3.6 V | | | | | 8 | |
| | | | 0 V to 3.6 V | 0 V | | | | | -2 | |
| $I_{CCA} + I_{CCB}$ | | $V_I = V_{CCI}$ or GND, $I_O = 0$ | 1.2 V to 3.6 V | 1.2 V to 3.6 V | | | | | 16 | μA |
| C_i | Control inputs | $V_I = 3.3\ \text{V}$ or GND | 3.3 V | 3.3 V | | 2.5 | | | 3 | pF |
| C_{io} | A or B port | $V_O = 3.3\ \text{V}$ or GND | 3.3 V | 3.3 V | | 5 | | | 6 | pF |

(1) All unused control inputs of the device must be held at VCC or GND to ensure proper device operation. Refer to the TI application report, Implications of Slow or Floating CMOS Inputs, literature number SCBA004.

(2) V_{CCO} is the V_{CC} associated with the output port.

(3) V_{CCI} is the V_{CC} associated with the input port.

SWITCHING CHARACTERISTICS

over recommended operating free-air temperature range, $V_{CCA} = 1.2\text{ V}$ (unless otherwise noted) (see [Figure 2](#))

| PARAMETER | FROM (INPUT) | TO (OUTPUT) | $V_{CCB} = 1.2\text{ V}$ | $V_{CCB} = 1.5\text{ V} \pm 0.1\text{ V}$ | $V_{CCB} = 1.8\text{ V} \pm 0.15\text{ V}$ | $V_{CCB} = 2.5\text{ V} \pm 0.2\text{ V}$ | $V_{CCB} = 3.3\text{ V} \pm 0.3\text{ V}$ | UNIT |
|-----------|-----------------|----------------|--------------------------|---|--|---|---|------|
| | | | TYP | TYP | TYP | TYP | TYP | |
| t_{PLH} | A | B | 3.5 | 2.8 | 2.7 | 2.7 | 3.1 | ns |
| t_{PHL} | | | 3.5 | 2.8 | 2.7 | 2.7 | 3.1 | |
| t_{PLH} | B | A | 3.8 | 3.4 | 3.2 | 3 | 2.9 | ns |
| t_{PHL} | | | 3.8 | 3.4 | 3.2 | 3 | 2.9 | |
| t_{PZH} | \overline{OE} | A | 6 | 4.8 | 4.4 | 5.3 | 9.3 | ns |
| t_{PZL} | | | 6 | 4.8 | 4.4 | 5.3 | 9.3 | |
| t_{PZH} | \overline{OE} | B | 6.7 | 6.7 | 6.6 | 6.7 | 6.6 | ns |
| t_{PZL} | | | 6.7 | 6.7 | 6.6 | 6.7 | 6.6 | |
| t_{PHZ} | \overline{OE} | A | 4.3 | 3.6 | 3.7 | 3.3 | 4 | ns |
| t_{PLZ} | | | 4.3 | 3.6 | 3.7 | 3.3 | 4 | |
| t_{PHZ} | \overline{OE} | B | 4.4 | 4.4 | 4.4 | 4.4 | 4.4 | ns |
| t_{PLZ} | | | 4.4 | 4.4 | 4.4 | 4.4 | 4.4 | |

SWITCHING CHARACTERISTICS

over recommended operating free-air temperature range, $V_{CCA} = 1.5\text{ V} \pm 0.1\text{ V}$ (see [Figure 2](#))

| PARAMETER | FROM (INPUT) | TO (OUTPUT) | $V_{CCB} = 1.2\text{ V}$ | $V_{CCB} = 1.5\text{ V} \pm 0.1\text{ V}$ | | $V_{CCB} = 1.8\text{ V} \pm 0.15\text{ V}$ | | $V_{CCB} = 2.5\text{ V} \pm 0.2\text{ V}$ | | $V_{CCB} = 3.3\text{ V} \pm 0.3\text{ V}$ | | UNIT |
|-----------|-----------------|----------------|--------------------------|---|-----|--|-----|---|-----|---|-----|------|
| | | | TYP | MIN | MAX | MIN | MAX | MIN | MAX | MIN | MAX | |
| t_{PLH} | A | B | 3.1 | 0.3 | 4.4 | 0.2 | 3.9 | 0.1 | 3.6 | 0.1 | 3.9 | ns |
| t_{PHL} | | | 3.1 | 0.3 | 4.4 | 0.2 | 3.9 | 0.1 | 3.6 | 0.1 | 3.9 | |
| t_{PLH} | B | A | 2.9 | 0.6 | 5.1 | 0.4 | 4.9 | 0.2 | 4.6 | 0.1 | 4.5 | ns |
| t_{PHL} | | | 2.9 | 0.6 | 5.1 | 0.4 | 4.9 | 0.2 | 4.6 | 0.1 | 4.5 | |
| t_{PZH} | \overline{OE} | A | 5.3 | 1.1 | 7.1 | 0.9 | 6.2 | 0.7 | 5.5 | 0.1 | 6.4 | ns |
| t_{PZL} | | | 5.3 | 1.1 | 7.1 | 0.9 | 6.2 | 0.7 | 5.5 | 0.1 | 6.4 | |
| t_{PZH} | \overline{OE} | B | 4.4 | 1.1 | 8.2 | 1.1 | 8.2 | 1.1 | 8.2 | 1.1 | 8.2 | ns |
| t_{PZL} | | | 4.4 | 1.1 | 8.2 | 1.1 | 8.2 | 1.1 | 8.2 | 1.1 | 8.2 | |
| t_{PHZ} | \overline{OE} | A | 3.6 | 1.2 | 4.8 | 0.8 | 5.4 | 0.4 | 5.1 | 1 | 5.4 | ns |
| t_{PLZ} | | | 3.6 | 1.2 | 4.8 | 0.8 | 5.4 | 0.4 | 5.1 | 1 | 5.4 | |
| t_{PHZ} | \overline{OE} | B | 3.1 | 0.3 | 5.6 | 0.2 | 5.7 | 0.3 | 5.6 | 0.3 | 5.6 | ns |
| t_{PLZ} | | | 3.1 | 0.3 | 5.6 | 0.2 | 5.7 | 0.3 | 5.6 | 0.3 | 5.6 | |

SWITCHING CHARACTERISTICS

over recommended operating free-air temperature range, $V_{CCA} = 1.8 \text{ V} \pm 0.15 \text{ V}$ (see [Figure 2](#))

| PARAMETER | FROM (INPUT) | TO (OUTPUT) | $V_{CCB} = 1.2 \text{ V}$ | $V_{CCB} = 1.5 \text{ V} \pm 0.1 \text{ V}$ | | $V_{CCB} = 1.8 \text{ V} \pm 0.15 \text{ V}$ | | $V_{CCB} = 2.5 \text{ V} \pm 0.2 \text{ V}$ | | $V_{CCB} = 3.3 \text{ V} \pm 0.3 \text{ V}$ | | UNIT |
|-----------|-----------------|----------------|---------------------------|---|-----|--|-----|---|-----|---|-----|------|
| | | | TYP | MIN | MAX | MIN | MAX | MIN | MAX | MIN | MAX | |
| t_{PLH} | A | B | 2.8 | 0.1 | 4.1 | 0.1 | 3.6 | 0.1 | 3.1 | 0.1 | 3.3 | ns |
| t_{PHL} | | | 2.8 | 0.1 | 4.1 | 0.1 | 3.6 | 0.1 | 3.1 | 0.1 | 3.3 | |
| t_{PLH} | B | A | 2.6 | 0.4 | 4.3 | 0.1 | 4.1 | 0.1 | 3.8 | 0.1 | 3.7 | ns |
| t_{PHL} | | | 2.6 | 0.4 | 4.3 | 0.1 | 4.1 | 0.1 | 3.8 | 0.1 | 3.7 | |
| t_{PZH} | \overline{OE} | A | 5 | 0.8 | 6.7 | 0.6 | 5.8 | 0.4 | 4.8 | 0.3 | 4.6 | ns |
| t_{PZL} | | | 5 | 0.8 | 6.7 | 0.6 | 5.8 | 0.4 | 4.8 | 0.3 | 4.6 | |
| t_{PZH} | \overline{OE} | B | 3.3 | 0.2 | 6.7 | 0.2 | 6.6 | 0.2 | 6.7 | 0.2 | 6.7 | ns |
| t_{PZL} | | | 3.3 | 0.2 | 6.7 | 0.2 | 6.6 | 0.2 | 6.7 | 0.2 | 6.7 | |
| t_{PHZ} | \overline{OE} | A | 3.4 | 0.7 | 4.7 | 0.3 | 5.1 | 0.1 | 4.5 | 0.8 | 5 | ns |
| t_{PLZ} | | | 3.4 | 0.7 | 4.7 | 0.3 | 5.1 | 0.1 | 4.5 | 0.8 | 5 | |
| t_{PHZ} | \overline{OE} | B | 2.9 | 0.1 | 5.7 | 0.1 | 5.8 | 0.1 | 5.8 | 0.1 | 5.8 | ns |
| t_{PLZ} | | | 2.9 | 0.1 | 5.7 | 0.1 | 5.8 | 0.1 | 5.8 | 0.1 | 5.8 | |

SWITCHING CHARACTERISTICS

over recommended operating free-air temperature range, $V_{CCA} = 2.5 \text{ V} \pm 0.2 \text{ V}$ (see [Figure 2](#))

| PARAMETER | FROM (INPUT) | TO (OUTPUT) | $V_{CCB} = 1.2 \text{ V}$ | $V_{CCB} = 1.5 \text{ V} \pm 0.1 \text{ V}$ | | $V_{CCB} = 1.8 \text{ V} \pm 0.15 \text{ V}$ | | $V_{CCB} = 2.5 \text{ V} \pm 0.2 \text{ V}$ | | $V_{CCB} = 3.3 \text{ V} \pm 0.3 \text{ V}$ | | UNIT |
|-----------|-----------------|----------------|---------------------------|---|-----|--|-----|---|-----|---|-----|------|
| | | | TYP | MIN | MAX | MIN | MAX | MIN | MAX | MIN | MAX | |
| t_{PLH} | A | B | 2.6 | 0.1 | 3.8 | 0.1 | 3.2 | 0.1 | 2.7 | 0.1 | 2.6 | ns |
| t_{PHL} | | | 2.6 | 0.1 | 3.8 | 0.1 | 3.2 | 0.1 | 2.7 | 0.1 | 2.6 | |
| t_{PLH} | B | A | 2.5 | 0.5 | 3.4 | 0.2 | 3.1 | 0.1 | 2.8 | 0.1 | 2.6 | ns |
| t_{PHL} | | | 2.5 | 0.5 | 3.4 | 0.2 | 3.1 | 0.1 | 2.8 | 0.1 | 2.6 | |
| t_{PZH} | \overline{OE} | A | 4.7 | 0.7 | 6.2 | 0.5 | 5.2 | 0.3 | 4.1 | 0.3 | 3.6 | ns |
| t_{PZL} | | | 4.7 | 0.7 | 6.2 | 0.5 | 5.2 | 0.3 | 4.1 | 0.3 | 3.6 | |
| t_{PZH} | \overline{OE} | B | 2.3 | 0.4 | 4.5 | 0.4 | 4.5 | 0.4 | 4.5 | 0.4 | 4.5 | ns |
| t_{PZL} | | | 2.3 | 0.4 | 4.5 | 0.4 | 4.5 | 0.4 | 4.5 | 0.4 | 4.5 | |
| t_{PHZ} | \overline{OE} | A | 3 | 0.2 | 4.3 | 0.1 | 4.9 | 0.1 | 4 | 0.7 | 4.3 | ns |
| t_{PLZ} | | | 3 | 0.2 | 4.3 | 0.1 | 4.9 | 0.1 | 4 | 0.7 | 4.3 | |
| t_{PHZ} | \overline{OE} | B | 1.9 | 0.1 | 4.7 | 0.1 | 4.6 | 0.1 | 4.7 | 0.1 | 4.7 | ns |
| t_{PLZ} | | | 1.9 | 0.1 | 4.7 | 0.1 | 4.6 | 0.1 | 4.7 | 0.1 | 4.7 | |

SWITCHING CHARACTERISTICS

over recommended operating free-air temperature range, $V_{CCA} = 3.3 \text{ V} \pm 0.3 \text{ V}$ (see [Figure 2](#))

| PARAMETER | FROM (INPUT) | TO (OUTPUT) | $V_{CCB} = 1.2 \text{ V}$ | $V_{CCB} = 1.5 \text{ V} \pm 0.1 \text{ V}$ | | $V_{CCB} = 1.8 \text{ V} \pm 0.15 \text{ V}$ | | $V_{CCB} = 2.5 \text{ V} \pm 0.2 \text{ V}$ | | $V_{CCB} = 3.3 \text{ V} \pm 0.3 \text{ V}$ | | UNIT |
|-----------|-----------------|----------------|---------------------------|---|-----|--|-----|---|-----|---|-----|------|
| | | | TYP | MIN | MAX | MIN | MAX | MIN | MAX | MIN | MAX | |
| t_{PLH} | A | B | 2.5 | 0.1 | 3.6 | 0.1 | 3 | 0.1 | 2.6 | 0.1 | 2.4 | ns |
| t_{PHL} | | | 2.5 | 0.1 | 3.6 | 0.1 | 3 | 0.1 | 2.6 | 0.1 | 2.4 | |
| t_{PLH} | B | A | 2.6 | 0.5 | 3.4 | 0.2 | 2.9 | 0.1 | 2.5 | 0.1 | 2.3 | ns |
| t_{PHL} | | | 2.6 | 0.5 | 3.4 | 0.2 | 2.9 | 0.1 | 2.5 | 0.1 | 2.3 | |
| t_{PZH} | \overline{OE} | A | 4.5 | 0.9 | 5.9 | 0.5 | 5 | 0.3 | 3.8 | 0.3 | 3.3 | ns |
| t_{PZL} | | | 3.8 | 0.9 | 5.9 | 0.5 | 5 | 0.3 | 3.8 | 0.3 | 3.3 | |
| t_{PZH} | \overline{OE} | B | 1.9 | 0.4 | 3.6 | 0.4 | 3.6 | 0.4 | 3.6 | 0.4 | 3.6 | ns |
| t_{PZL} | | | 1.9 | 0.4 | 3.6 | 0.4 | 3.6 | 0.4 | 3.6 | 0.4 | 3.6 | |
| t_{PHZ} | \overline{OE} | A | 2.7 | 0.1 | 4.2 | 0.1 | 4.6 | 0.3 | 3.8 | 0.7 | 3.9 | ns |
| t_{PLZ} | | | 2.7 | 0.1 | 4.2 | 0.1 | 4.6 | 0.3 | 3.8 | 0.7 | 3.9 | |
| t_{PHZ} | \overline{OE} | B | 2.3 | 0.1 | 4.5 | 0.1 | 4.5 | 0.1 | 4.6 | 0.1 | 4.6 | ns |
| t_{PLZ} | | | 2.3 | 0.1 | 4.5 | 0.1 | 4.5 | 0.1 | 4.6 | 0.1 | 4.6 | |

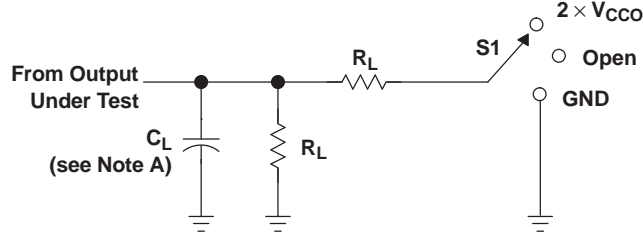
OPERATING CHARACTERISTICS

$T_A = 25^\circ\text{C}$

| PARAMETER | | | TEST CONDITIONS | $V_{CCA} =$ $V_{CCB} = 1.2 \text{ V}$ | $V_{CCA} =$ $V_{CCB} = 1.5 \text{ V}$ | $V_{CCA} =$ $V_{CCB} = 1.8 \text{ V}$ | $V_{CCA} =$ $V_{CCB} = 2.5 \text{ V}$ | $V_{CCA} =$ $V_{CCB} = 3.3 \text{ V}$ | UNIT |
|-----------------|--------|------------------|---|--|--|--|--|--|------|
| | | | | TYP | TYP | TYP | TYP | TYP | |
| $C_{pdA}^{(1)}$ | A to B | Outputs enabled | $C_L = 0,$ $f = 10 \text{ MHz},$ $t_r = t_f = 1 \text{ ns}$ | 3 | 3 | 3 | 3 | 4 | pF |
| | | Outputs disabled | | 1 | 1 | 1 | 2 | 2 | |
| | B to A | Outputs enabled | | 12 | 13 | 14 | 15 | 17 | |
| | | Outputs disabled | | 2 | 2 | 2 | 2 | 2 | |
| $C_{pdB}^{(1)}$ | A to B | Outputs enabled | $C_L = 0,$ $f = 10 \text{ MHz},$ $t_r = t_f = 1 \text{ ns}$ | 12 | 13 | 14 | 16 | 17 | pF |
| | | Outputs disabled | | 2 | 2 | 2 | 2 | 2 | |
| | B to A | Outputs enabled | | 3 | 3 | 3 | 3 | 4 | |
| | | Outputs disabled | | 1 | 1 | 1 | 2 | 2 | |

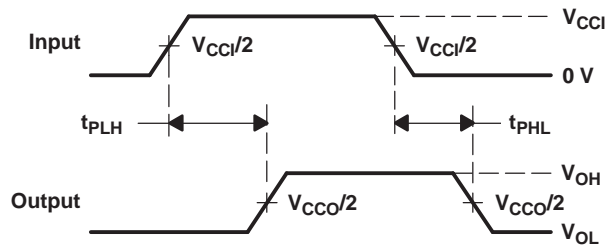
(1) Power dissipation capacitance per transceiver

PARAMETER MEASUREMENT INFORMATION



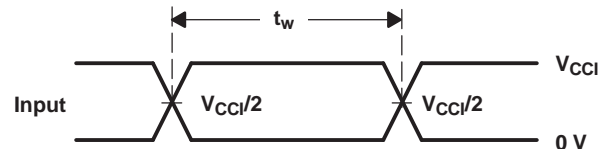
LOAD CIRCUIT

| V_{CCO} | C_L | R_L | V_{TP} |
|--------------------|-------|--------------|----------|
| 1.2 V | 15 pF | 2 k Ω | 0.1 V |
| 1.5 V \pm 0.1 V | 15 pF | 2 k Ω | 0.1 V |
| 1.8 V \pm 0.15 V | 15 pF | 2 k Ω | 0.15 V |
| 2.5 V \pm 0.2 V | 15 pF | 2 k Ω | 0.15 V |
| 3.3 V \pm 0.3 V | 15 pF | 2 k Ω | 0.3 V |

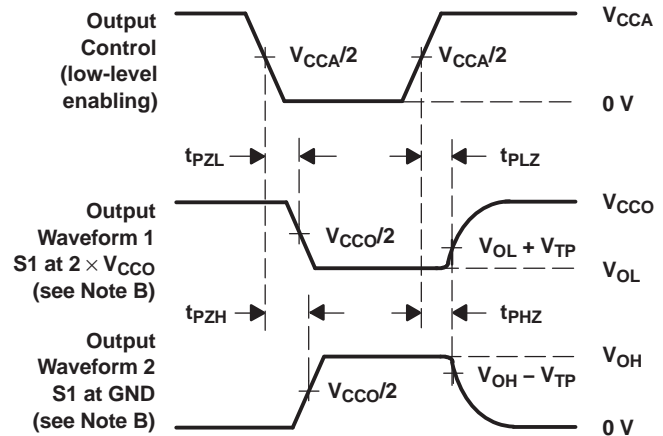


VOLTAGE WAVEFORMS
PROPAGATION DELAY TIMES

| TEST | S1 |
|-------------------|--------------------|
| t_{pd} | Open |
| t_{PLZ}/t_{PZL} | $2 \times V_{CCO}$ |
| t_{PHZ}/t_{PZH} | GND |



VOLTAGE WAVEFORMS
PULSE DURATION



VOLTAGE WAVEFORMS
ENABLE AND DISABLE TIMES

- NOTES:
- A. C_L includes probe and jig capacitance.
 - B. Waveform 1 is for an output with internal conditions such that the output is low, except when disabled by the output control. Waveform 2 is for an output with internal conditions such that the output is high, except when disabled by the output control.
 - C. All input pulses are supplied by generators having the following characteristics: PRR \leq 10 MHz, $Z_O = 50 \Omega$, $dv/dt \geq 1$ V/ns.
 - D. The outputs are measured one at a time, with one transition per measurement.
 - E. t_{PLZ} and t_{PHZ} are the same as t_{dis} .
 - F. t_{PZL} and t_{PZH} are the same as t_{en} .
 - G. t_{PLH} and t_{PHL} are the same as t_{pd} .
 - H. V_{CCI} is the V_{CC} associated with the input port.
 - I. V_{CCO} is the V_{CC} associated with the output port.

Figure 2. Load and Circuit and Voltage Waveforms

PACKAGING INFORMATION

| Orderable Device | Status (1) | Package Type | Package Drawing | Pins | Package Qty | Eco Plan (2) | Lead/Ball Finish | MSL Peak Temp (3) | Op Temp (°C) | Top-Side Markings (4) | Samples |
|-------------------|---------------|--------------|--------------------|------|-------------|----------------------------|------------------|----------------------|--------------|--------------------------|-------------------------|
| 74AVC4T774RGYRG4 | ACTIVE | VQFN | RGY | 16 | 3000 | Green (RoHS & no Sb/Br) | CU NIPDAU | Level-2-260C-1 YEAR | -40 to 85 | WT774 | Samples |
| 74AVC4T774RSVRG4 | ACTIVE | UQFN | RSV | 16 | 3000 | Green (RoHS & no Sb/Br) | CU NIPDAU | Level-1-260C-UNLIM | -40 to 85 | ZVK | Samples |
| SN74AVC4T774PW | ACTIVE | TSSOP | PW | 16 | 90 | Green (RoHS & no Sb/Br) | CU NIPDAU | Level-1-260C-UNLIM | -40 to 85 | WT774 | Samples |
| SN74AVC4T774PWG4 | ACTIVE | TSSOP | PW | 16 | 90 | Green (RoHS & no Sb/Br) | CU NIPDAU | Level-1-260C-UNLIM | -40 to 85 | WT774 | Samples |
| SN74AVC4T774PWR | ACTIVE | TSSOP | PW | 16 | 2000 | Green (RoHS & no Sb/Br) | CU NIPDAU | Level-1-260C-UNLIM | -40 to 85 | WT774 | Samples |
| SN74AVC4T774PWRG4 | ACTIVE | TSSOP | PW | 16 | 2000 | Green (RoHS & no Sb/Br) | CU NIPDAU | Level-1-260C-UNLIM | -40 to 85 | WT774 | Samples |
| SN74AVC4T774RGYR | ACTIVE | VQFN | RGY | 16 | 3000 | Green (RoHS & no Sb/Br) | CU NIPDAU | Level-2-260C-1 YEAR | -40 to 85 | WT774 | Samples |
| SN74AVC4T774RSVR | ACTIVE | UQFN | RSV | 16 | 3000 | Green (RoHS & no Sb/Br) | CU NIPDAU | Level-1-260C-UNLIM | -40 to 85 | ZVK | Samples |

(1) The marketing status values are defined as follows:

ACTIVE: Product device recommended for new designs.

LIFEBUY: TI has announced that the device will be discontinued, and a lifetime-buy period is in effect.

NRND: Not recommended for new designs. Device is in production to support existing customers, but TI does not recommend using this part in a new design.

PREVIEW: Device has been announced but is not in production. Samples may or may not be available.

OBSOLETE: TI has discontinued the production of the device.

(2) Eco Plan - The planned eco-friendly classification: Pb-Free (RoHS), Pb-Free (RoHS Exempt), or Green (RoHS & no Sb/Br) - please check <http://www.ti.com/productcontent> for the latest availability information and additional product content details.

TBD: The Pb-Free/Green conversion plan has not been defined.

Pb-Free (RoHS): TI's terms "Lead-Free" or "Pb-Free" mean semiconductor products that are compatible with the current RoHS requirements for all 6 substances, including the requirement that lead not exceed 0.1% by weight in homogeneous materials. Where designed to be soldered at high temperatures, TI Pb-Free products are suitable for use in specified lead-free processes.

Pb-Free (RoHS Exempt): This component has a RoHS exemption for either 1) lead-based flip-chip solder bumps used between the die and package, or 2) lead-based die adhesive used between the die and leadframe. The component is otherwise considered Pb-Free (RoHS compatible) as defined above.

Green (RoHS & no Sb/Br): TI defines "Green" to mean Pb-Free (RoHS compatible), and free of Bromine (Br) and Antimony (Sb) based flame retardants (Br or Sb do not exceed 0.1% by weight in homogeneous material)

(3) MSL, Peak Temp. -- The Moisture Sensitivity Level rating according to the JEDEC industry standard classifications, and peak solder temperature.

⁽⁴⁾ Only one of markings shown within the brackets will appear on the physical device.

Important Information and Disclaimer: The information provided on this page represents TI's knowledge and belief as of the date that it is provided. TI bases its knowledge and belief on information provided by third parties, and makes no representation or warranty as to the accuracy of such information. Efforts are underway to better integrate information from third parties. TI has taken and continues to take reasonable steps to provide representative and accurate information but may not have conducted destructive testing or chemical analysis on incoming materials and chemicals. TI and TI suppliers consider certain information to be proprietary, and thus CAS numbers and other limited information may not be available for release.

In no event shall TI's liability arising out of such information exceed the total purchase price of the TI part(s) at issue in this document sold by TI to Customer on an annual basis.

TAPE AND REEL INFORMATION


*All dimensions are nominal

| Device | Package Type | Package Drawing | Pins | SPQ | Reel Diameter (mm) | Reel Width W1 (mm) | A0 (mm) | B0 (mm) | K0 (mm) | P1 (mm) | W (mm) | Pin1 Quadrant |
|------------------|--------------|-----------------|------|------|--------------------|--------------------|---------|---------|---------|---------|--------|---------------|
| SN74AVC4T774PWR | TSSOP | PW | 16 | 2000 | 330.0 | 12.4 | 6.9 | 5.6 | 1.6 | 8.0 | 12.0 | Q1 |
| SN74AVC4T774RGYR | VQFN | RGY | 16 | 3000 | 330.0 | 12.4 | 3.8 | 4.3 | 1.5 | 8.0 | 12.0 | Q1 |
| SN74AVC4T774RSVR | UQFN | RSV | 16 | 3000 | 180.0 | 12.4 | 2.1 | 2.9 | 0.75 | 4.0 | 12.0 | Q1 |

TAPE AND REEL BOX DIMENSIONS



*All dimensions are nominal

| Device | Package Type | Package Drawing | Pins | SPQ | Length (mm) | Width (mm) | Height (mm) |
|------------------|--------------|-----------------|------|------|-------------|------------|-------------|
| SN74AVC4T774PWR | TSSOP | PW | 16 | 2000 | 367.0 | 367.0 | 35.0 |
| SN74AVC4T774RGYR | VQFN | RGY | 16 | 3000 | 367.0 | 367.0 | 35.0 |
| SN74AVC4T774RSVR | UQFN | RSV | 16 | 3000 | 203.0 | 203.0 | 35.0 |

PW (R-PDSO-G16)

PLASTIC SMALL OUTLINE



4040064-4/G 02/11

- NOTES:
- A. All linear dimensions are in millimeters. Dimensioning and tolerancing per ASME Y14.5M-1994.
 - B. This drawing is subject to change without notice.
 - C. Body length does not include mold flash, protrusions, or gate burrs. Mold flash, protrusions, or gate burrs shall not exceed 0,15 each side.
 - D. Body width does not include interlead flash. Interlead flash shall not exceed 0,25 each side.
 - E. Falls within JEDEC MO-153

PW (R-PDSO-G16)

PLASTIC SMALL OUTLINE

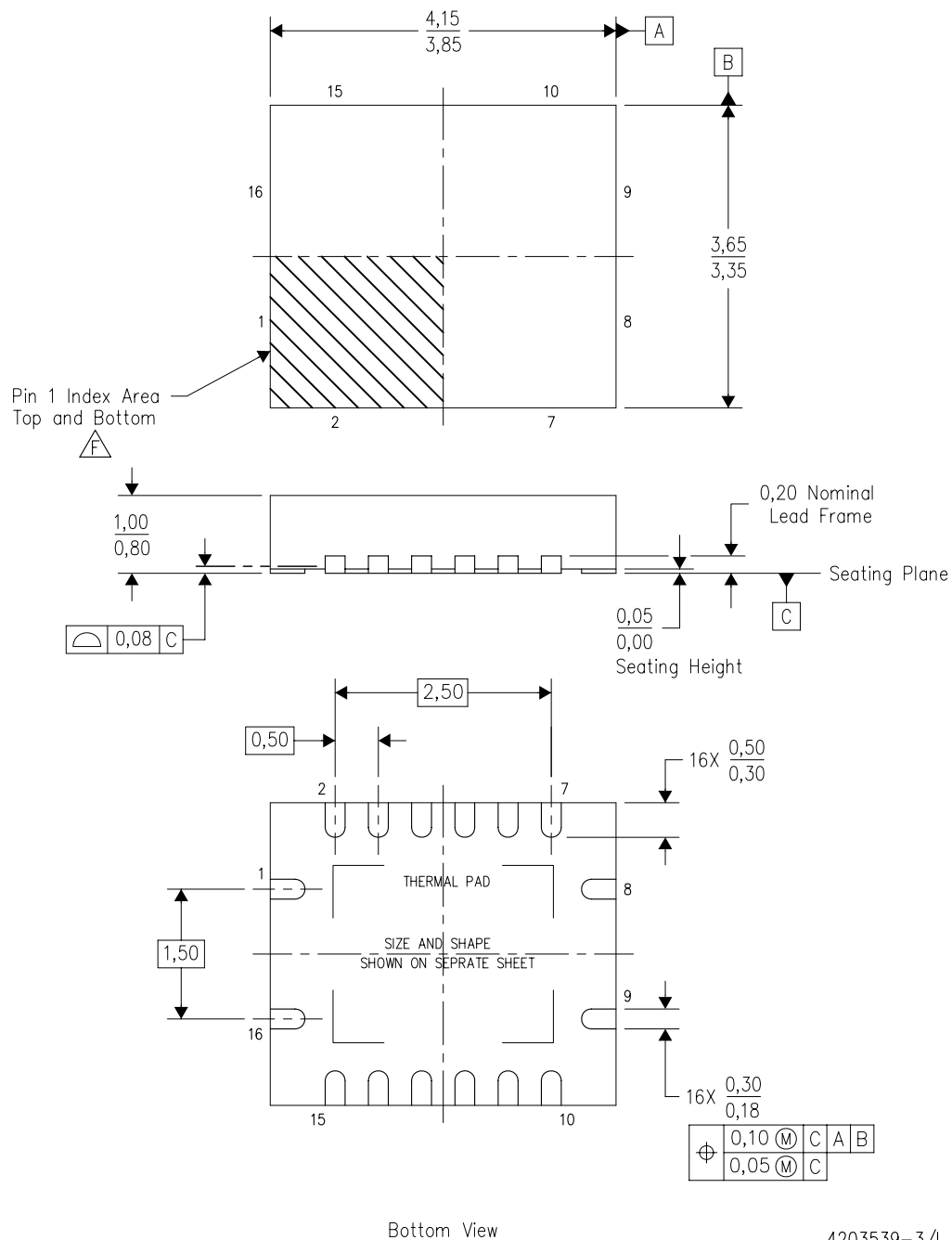


4211284-3/F 12/12

- NOTES:
- A. All linear dimensions are in millimeters.
 - B. This drawing is subject to change without notice.
 - C. Publication IPC-7351 is recommended for alternate designs.
 - D. Laser cutting apertures with trapezoidal walls and also rounding corners will offer better paste release. Customers should contact their board assembly site for stencil design recommendations. Refer to IPC-7525 for other stencil recommendations.
 - E. Customers should contact their board fabrication site for solder mask tolerances between and around signal pads.

RGY (R-PVQFN-N16)

PLASTIC QUAD FLATPACK NO-LEAD



4203539-3/I 06/2011

- NOTES:
- All linear dimensions are in millimeters. Dimensioning and tolerancing per ASME Y14.5M-1994.
 - This drawing is subject to change without notice.
 - QFN (Quad Flatpack No-Lead) package configuration.
 - The package thermal pad must be soldered to the board for thermal and mechanical performance.
 - See the additional figure in the Product Data Sheet for details regarding the exposed thermal pad features and dimensions.
- F** Pin 1 identifiers are located on both top and bottom of the package and within the zone indicated. The Pin 1 identifiers are either a molded, marked, or metal feature.
- Package complies to JEDEC MO-241 variation BA.

RGY (R-PVQFN-N16)

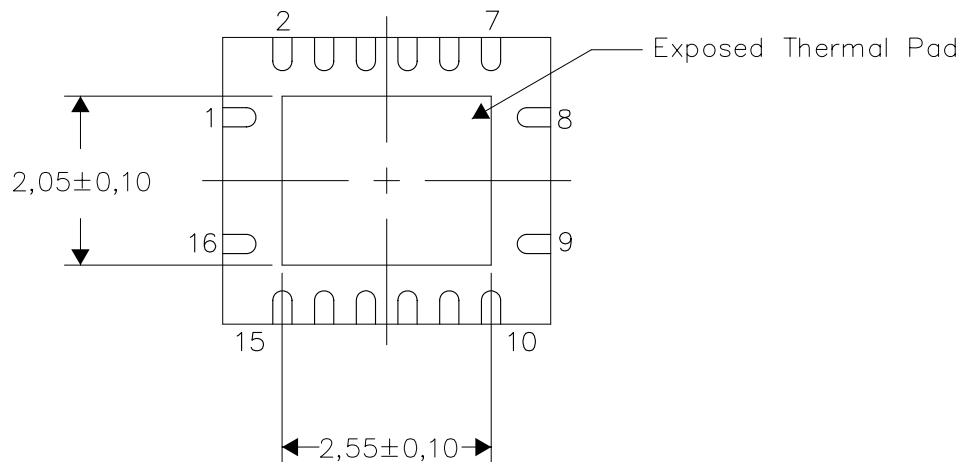
PLASTIC QUAD FLATPACK NO-LEAD

THERMAL INFORMATION

This package incorporates an exposed thermal pad that is designed to be attached directly to an external heatsink. The thermal pad must be soldered directly to the printed circuit board (PCB). After soldering, the PCB can be used as a heatsink. In addition, through the use of thermal vias, the thermal pad can be attached directly to the appropriate copper plane shown in the electrical schematic for the device, or alternatively, can be attached to a special heatsink structure designed into the PCB. This design optimizes the heat transfer from the integrated circuit (IC).

For information on the Quad Flatpack No-Lead (QFN) package and its advantages, refer to Application Report, QFN/SON PCB Attachment, Texas Instruments Literature No. SLUA271. This document is available at www.ti.com.

The exposed thermal pad dimensions for this package are shown in the following illustration.

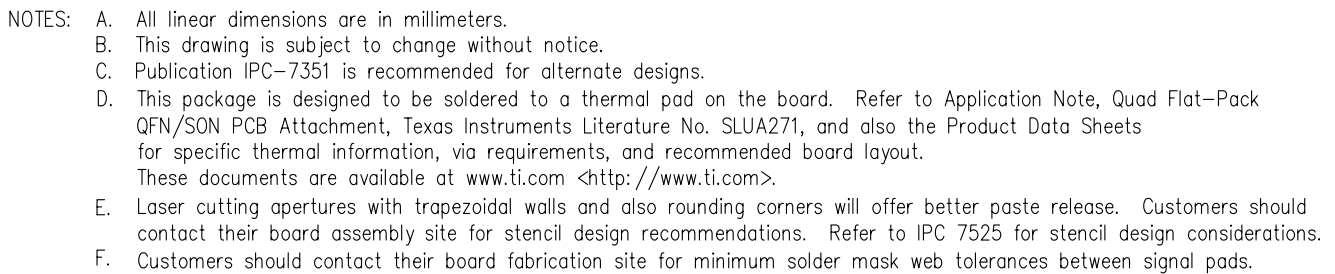


Bottom View

Exposed Thermal Pad Dimensions

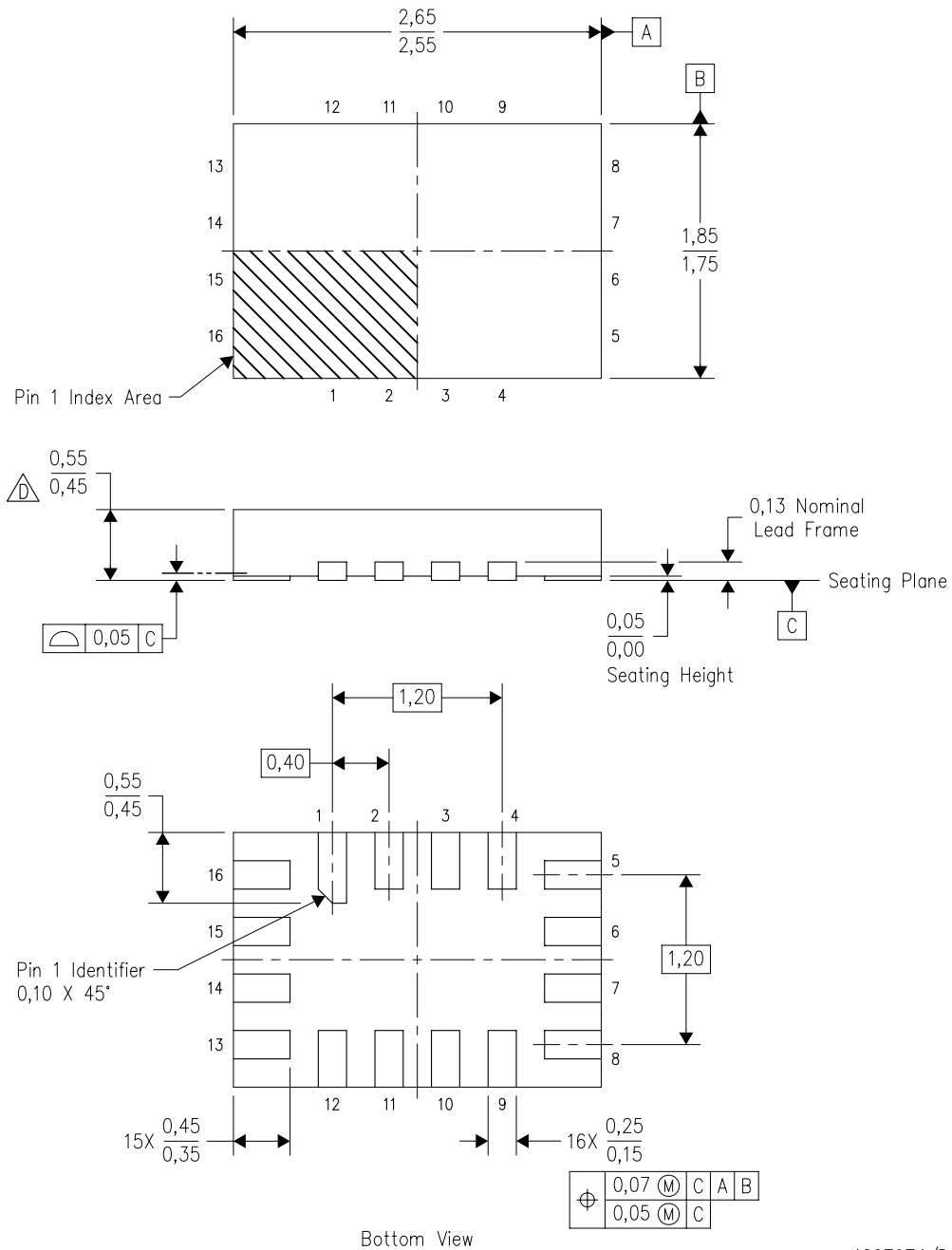
4206353-3/0 11/11

NOTE: All linear dimensions are in millimeters



RSV (R-PUQFN-N16)

PLASTIC QUAD FLATPACK NO-LEAD

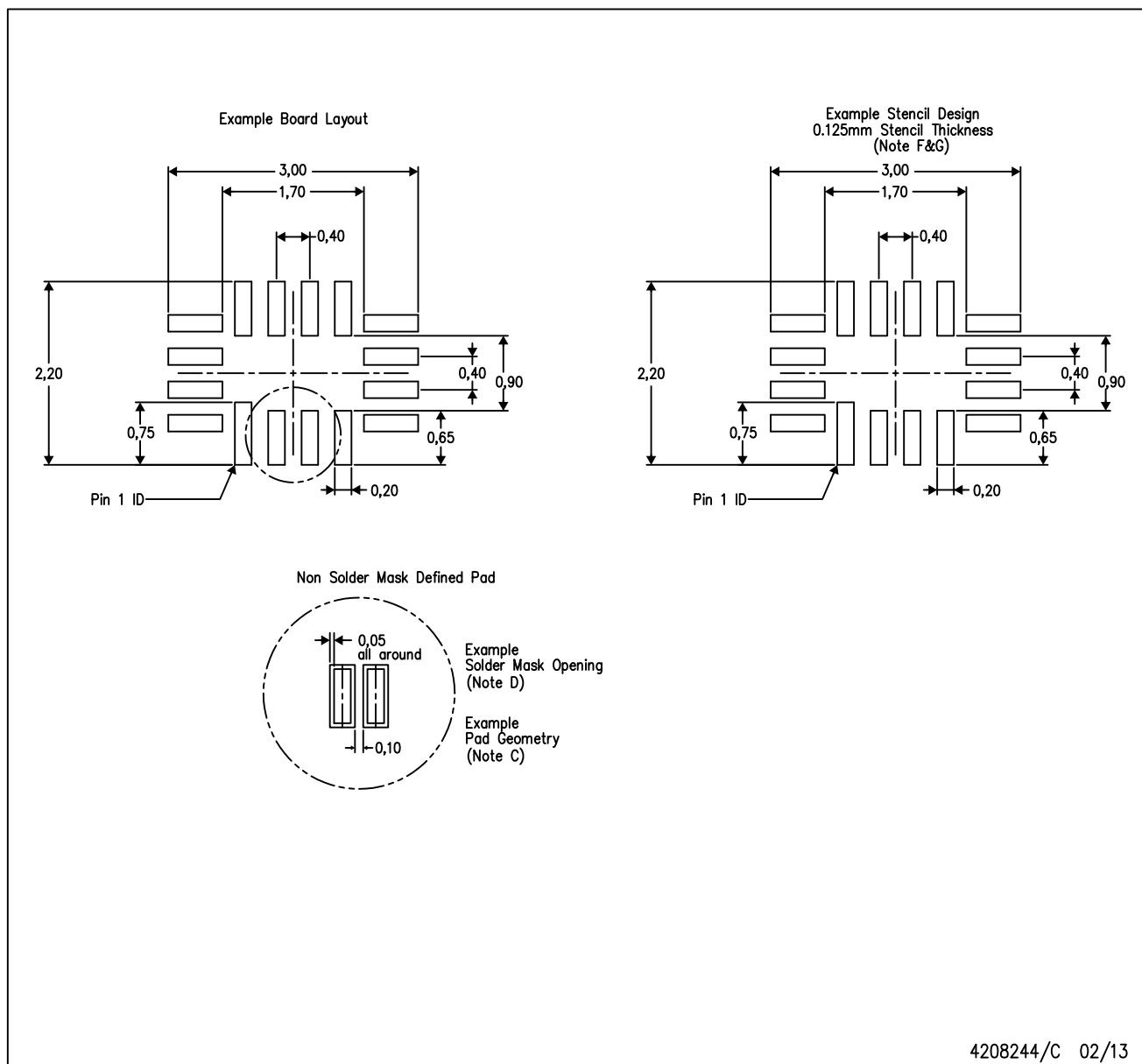


4207974/D 12/11

- NOTES:
- A. All linear dimensions are in millimeters. Dimensioning and tolerancing per ASME Y14.5M-1994.
 - B. This drawing is subject to change without notice.
 - C. QFN (Quad Flatpack No-Lead) package configuration.
 - This package complies to JEDEC MO-288 variation UFHE, except minimum package thickness.

RSV (R-PUQFN-N16)

PLASTIC QUAD FLATPACK NO-LEAD



- NOTES:
- A. All linear dimensions are in millimeters.
 - B. This drawing is subject to change without notice.
 - C. Publication IPC-7351 is recommended for alternate designs.
 - D. Customers should contact their board fabrication site for minimum solder mask web tolerances between signal pads.
 - E. Maximum stencil thickness 0,127 mm (5 mils). All linear dimensions are in millimeters.
 - F. Laser cutting apertures with trapezoidal walls and also rounding corners will offer better paste release. Customers should contact their board assembly site for stencil design recommendations. Refer to IPC 7525 for stencil design considerations.
 - G. Side aperture dimensions over-print land for acceptable area ratio > 0.66. Customer may reduce side aperture dimensions if stencil manufacturing process allows for sufficient release at smaller opening.

IMPORTANT NOTICE

Texas Instruments Incorporated and its subsidiaries (TI) reserve the right to make corrections, enhancements, improvements and other changes to its semiconductor products and services per JESD46, latest issue, and to discontinue any product or service per JESD48, latest issue. Buyers should obtain the latest relevant information before placing orders and should verify that such information is current and complete. All semiconductor products (also referred to herein as "components") are sold subject to TI's terms and conditions of sale supplied at the time of order acknowledgment.

TI warrants performance of its components to the specifications applicable at the time of sale, in accordance with the warranty in TI's terms and conditions of sale of semiconductor products. Testing and other quality control techniques are used to the extent TI deems necessary to support this warranty. Except where mandated by applicable law, testing of all parameters of each component is not necessarily performed.

TI assumes no liability for applications assistance or the design of Buyers' products. Buyers are responsible for their products and applications using TI components. To minimize the risks associated with Buyers' products and applications, Buyers should provide adequate design and operating safeguards.

TI does not warrant or represent that any license, either express or implied, is granted under any patent right, copyright, mask work right, or other intellectual property right relating to any combination, machine, or process in which TI components or services are used. Information published by TI regarding third-party products or services does not constitute a license to use such products or services or a warranty or endorsement thereof. Use of such information may require a license from a third party under the patents or other intellectual property of the third party, or a license from TI under the patents or other intellectual property of TI.

Reproduction of significant portions of TI information in TI data books or data sheets is permissible only if reproduction is without alteration and is accompanied by all associated warranties, conditions, limitations, and notices. TI is not responsible or liable for such altered documentation. Information of third parties may be subject to additional restrictions.

Resale of TI components or services with statements different from or beyond the parameters stated by TI for that component or service voids all express and any implied warranties for the associated TI component or service and is an unfair and deceptive business practice. TI is not responsible or liable for any such statements.

Buyer acknowledges and agrees that it is solely responsible for compliance with all legal, regulatory and safety-related requirements concerning its products, and any use of TI components in its applications, notwithstanding any applications-related information or support that may be provided by TI. Buyer represents and agrees that it has all the necessary expertise to create and implement safeguards which anticipate dangerous consequences of failures, monitor failures and their consequences, lessen the likelihood of failures that might cause harm and take appropriate remedial actions. Buyer will fully indemnify TI and its representatives against any damages arising out of the use of any TI components in safety-critical applications.

In some cases, TI components may be promoted specifically to facilitate safety-related applications. With such components, TI's goal is to help enable customers to design and create their own end-product solutions that meet applicable functional safety standards and requirements. Nonetheless, such components are subject to these terms.

No TI components are authorized for use in FDA Class III (or similar life-critical medical equipment) unless authorized officers of the parties have executed a special agreement specifically governing such use.

Only those TI components which TI has specifically designated as military grade or "enhanced plastic" are designed and intended for use in military/aerospace applications or environments. Buyer acknowledges and agrees that any military or aerospace use of TI components which have **not** been so designated is solely at the Buyer's risk, and that Buyer is solely responsible for compliance with all legal and regulatory requirements in connection with such use.

TI has specifically designated certain components as meeting ISO/TS16949 requirements, mainly for automotive use. In any case of use of non-designated products, TI will not be responsible for any failure to meet ISO/TS16949.

Products

| | |
|------------------------------|--|
| Audio | www.ti.com/audio |
| Amplifiers | amplifier.ti.com |
| Data Converters | dataconverter.ti.com |
| DLP® Products | www.dlp.com |
| DSP | dsp.ti.com |
| Clocks and Timers | www.ti.com/clocks |
| Interface | interface.ti.com |
| Logic | logic.ti.com |
| Power Mgmt | power.ti.com |
| Microcontrollers | microcontroller.ti.com |
| RFID | www.ti-rfid.com |
| OMAP Applications Processors | www.ti.com/omap |
| Wireless Connectivity | www.ti.com/wirelessconnectivity |

Applications

| | |
|-------------------------------|--|
| Automotive and Transportation | www.ti.com/automotive |
| Communications and Telecom | www.ti.com/communications |
| Computers and Peripherals | www.ti.com/computers |
| Consumer Electronics | www.ti.com/consumer-apps |
| Energy and Lighting | www.ti.com/energy |
| Industrial | www.ti.com/industrial |
| Medical | www.ti.com/medical |
| Security | www.ti.com/security |
| Space, Avionics and Defense | www.ti.com/space-avionics-defense |
| Video and Imaging | www.ti.com/video |

TI E2E Community

e2e.ti.com



Компания «ЭлектроПласт» предлагает заключение долгосрочных отношений при поставках импортных электронных компонентов на взаимовыгодных условиях!

Наши преимущества:

- Оперативные поставки широкого спектра электронных компонентов отечественного и импортного производства напрямую от производителей и с крупнейших мировых складов;
- Поставка более 17-ти миллионов наименований электронных компонентов;
- Поставка сложных, дефицитных, либо снятых с производства позиций;
- Оперативные сроки поставки под заказ (от 5 рабочих дней);
- Экспресс доставка в любую точку России;
- Техническая поддержка проекта, помощь в подборе аналогов, поставка прототипов;
- Система менеджмента качества сертифицирована по Международному стандарту ISO 9001;
- Лицензия ФСБ на осуществление работ с использованием сведений, составляющих государственную тайну;
- Поставка специализированных компонентов (Xilinx, Altera, Analog Devices, Intersil, Interpoint, Microsemi, Aeroflex, Peregrine, Syfer, Eurofarad, Texas Instrument, Miteq, Cobham, E2V, MA-COM, Hittite, Mini-Circuits, General Dynamics и др.);

Помимо этого, одним из направлений компании «ЭлектроПласт» является направление «Источники питания». Мы предлагаем Вам помощь Конструкторского отдела:

- Подбор оптимального решения, техническое обоснование при выборе компонента;
- Подбор аналогов;
- Консультации по применению компонента;
- Поставка образцов и прототипов;
- Техническая поддержка проекта;
- Защита от снятия компонента с производства.



Как с нами связаться

Телефон: 8 (812) 309 58 32 (многоканальный)

Факс: 8 (812) 320-02-42

Электронная почта: org@eplast1.ru

Адрес: 198099, г. Санкт-Петербург, ул. Калинина, дом 2, корпус 4, литера А.