

HCPL-181

Phototransistor Optocoupler SMD Mini-Flat Type



Data Sheet



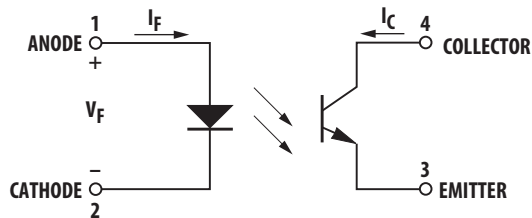
Lead (Pb) Free
RoHS 6 fully compliant

RoHS 6 fully compliant options available;
-xxxE denotes a lead-free product

Description

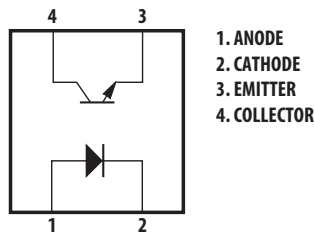
The HCPL-181 contains a light emitting diode optically coupled to a phototransistor. It is packaged in a 4-pin mini-flat SMD package with a 2.0 mm profile. The small dimension of this product allows significant space saving. The package volume is 30% smaller than that of conventional DIP type. Input-output isolation voltage is 3750 Vrms. Response time, t_r , is typically 4 μ s and minimum CTR is 50% at input current of 5 mA.

Schematic



Functional Diagram

PIN NO. AND INTERNAL CONNECTION DIAGRAM



Features

- Current Transfer Ratio (CTR: min. 50% at $I_F = 5$ mA, $V_{CE} = 5$ V)
- High input-output isolation voltage ($V_{ISO} = 3750$ Vrms)
- High collector-emitter voltage ($V_{CEO} = 80$ V)
- Response time (t_r : typ., 4 μ s at $V_{CE} = 2$ V, $I_C = 2$ mA, $R_L = 100$ Ω)
- Mini-flat package (2.0 mm profile) in tape and reel package
- UL approved
- CSA approved
- IEC/EN/DIN EN 60747-5-2 approved
- Options available:
 - IEC/EN/DIN EN 60747-5-2 approvals (060)

Applications

- I/O interfaces for computers
- System appliances, measuring instruments
- Signal transmission between circuits of different potentials and impedances
- Feedback circuit in power supply

CAUTION: It is advised that normal static precautions be taken in handling and assembly of this component to prevent damage and/or degradation which may be induced by ESD.

Ordering Information

HCPL-181 is UL Recognized with 3750 Vrms for 1 minute per UL1577 and is approved under CSA Component Acceptance Notice #5, File CA 88324

| Part Number | RoHS Compliant Option | | | | | Package | Surface Mount | Tape & Reel | IEC/EN/DIN EN 60747-5-2 | Quantity |
|-------------|------------------------------|------------------------------|-------------------------------|-------------------------------|-------------------------------|---------|---------------|-------------|-------------------------|-------------------|
| | Rank 'O' 50%<CTR <600% | Rank 'A' 80%<CTR <160% | Rank 'B' 130%<CTR <260% | Rank 'C' 200%<CTR <400% | Rank 'D' 300%<CTR <600% | | | | | |
| HCPL-181 | -000E | -00AE | -00BE | -00CE | -00DE | SO-4 | X | X | | 3000 pcs per reel |
| | -060E | -06AE | -06BE | -06CE | -06DE | SO-4 | X | X | X | 3000 pcs per reel |

To order, choose a part number from the part number column and combine with the desired option from the option column to form an order entry.

Example 1:

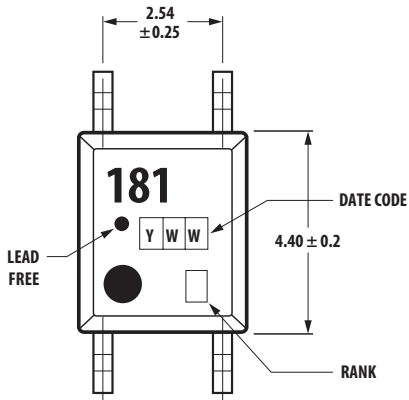
HCPL-181-00AE to order product of Miniflat-4 DC Surface Mount package in Tape and Reel packaging with 80%<CTR<160% and RoHS compliant.

Example 2:

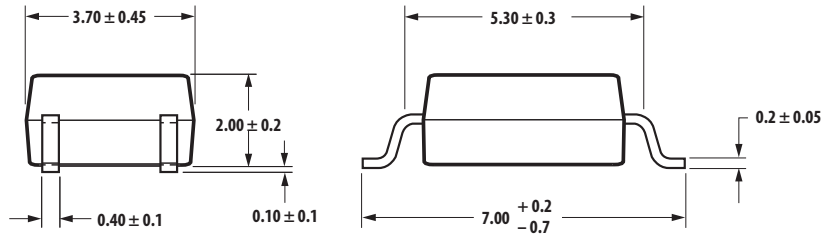
HCPL-181-060E to order product of Miniflat-4 DC Surface Mount package in Tape and Reel packaging with 50%<CTR<600%, IEC/EN/DIN EN60747-5-2 Safety Approval and RoHS compliant.

Option datasheets are available. Contact your Avago sales representative or authorized distributor for information.

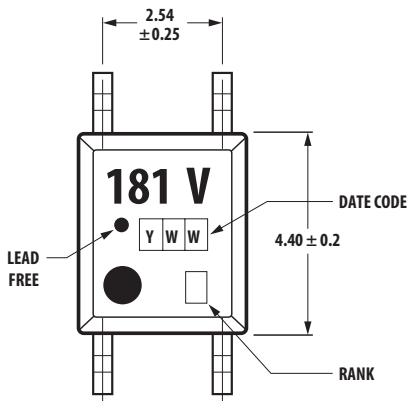
Package Outline Drawings
HCPL-181-000E



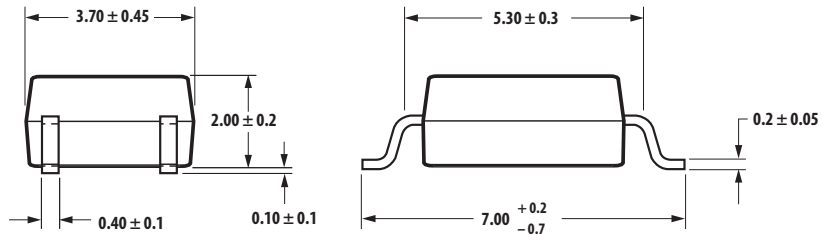
DIMENSIONS IN MILLIMETERS.



HCPL-181-060E

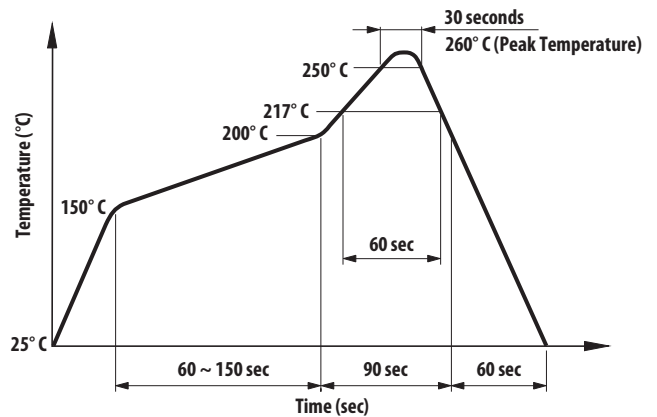


DIMENSIONS IN MILLIMETERS.



Solder Reflow Temperature Profile

1. One-time soldering reflow is recommended within the condition of temperature and time profile shown at right.
2. When using another soldering method such as infrared ray lamp, the temperature may rise partially in the mold of the device. Keep the temperature on the package of the device within the condition of (1) above.



Note: Non-halide flux should be used.

Absolute Maximum Ratings ($T_A = 25^\circ\text{C}$)

| | |
|--|-----------------|
| Storage Temperature, T_S | -55°C to +155°C |
| Operating Temperature, T_A | -55°C to +100°C |
| Lead Solder Temperature, max. (1.6 mm below seating plane) | 260°C for 10 s |
| Average Forward Current, I_F | 50 mA |
| Reverse Input Voltage, V_R | 6 V |
| Input Power Dissipation, P_I | 70 mW |
| Collector Current, I_C | 50 mA |
| Collector-Emitter Voltage, V_{CEO} | 80 V |
| Emitter-Collector Voltage, V_{ECO} | 6 V |
| Collector Power Dissipation | 150 mW |
| Total Power Dissipation | 170 mW |
| Isolation Voltage, V_{iso} (AC for 1 minute, R.H. = 40 ~ 60%) | 3750 Vrms |

| Rank Mark | CTR (%) | Conditions |
|-----------|-----------|---|
| A | 80 ~ 160 | $I_F = 5\text{ mA}$, $V_{CE} = 5\text{ V}$, $T_A = 25^\circ\text{C}$ |
| B | 130 ~ 260 | |
| C | 200 ~ 400 | |
| D | 300 ~ 600 | |

Electrical Specifications ($T_A = 25^\circ\text{C}$)

| Parameter | Symbol | Min. | Typ. | Max. | Units | Test Conditions |
|--------------------------------------|---------------|--------------------|--------------------|------|---------------|---|
| Forward Voltage | V_F | - | 1.2 | 1.4 | V | $I_F = 20\text{ mA}$ |
| Reverse Current | I_R | - | - | 10 | μA | $V_R = 4\text{ V}$ |
| Terminal Capacitance | C_t | - | 30 | 250 | pF | $V = 0$, $f = 1\text{ KHz}$ |
| Collector Dark Current | I_{CEO} | - | - | 100 | nA | $V_{CE} = 20\text{ V}$ |
| Collector-Emitter Breakdown Voltage | BV_{CEO} | 80 | - | - | V | $I_C = 0.1\text{ mA}$, $I_F = 0$ |
| Emitter-Collector Breakdown Voltage | BV_{ECO} | 6 | - | - | V | $I_E = 10\text{ }\mu\text{A}$, $I_F = 0$ |
| Collector Current | I_C | 2.5 | - | 30 | mA | $I_F = 5\text{ mA}$, $V_{CE} = 5\text{ V}$ |
| *Current Transfer Ratio | CTR | 50 | - | 600 | % | |
| Collector-Emitter Saturation Voltage | $V_{CE(sat)}$ | - | - | 0.2 | V | $I_F = 20\text{ mA}$, $I_C = 1\text{ mA}$ |
| Response Time (Rise) | t_r | - | 4 | 18 | μs | $V_{CC} = 2\text{ V}$, $I_C = 2\text{ mA}$ |
| Response Time (Fall) | t_f | - | 3 | 18 | μs | $R_L = 100\text{ }\Omega$ |
| Isolation Resistance | R_{iso} | 5×10^{10} | 1×10^{11} | - | Ω | DC 500 V 40 ~ 60% R.H. |
| Floating Capacitance | C_f | - | 0.6 | 1.0 | pF | $V = 0$, $f = 1\text{ MHz}$ |

$$* \text{CTR} = \frac{I_C}{I_F} \times 100\%$$

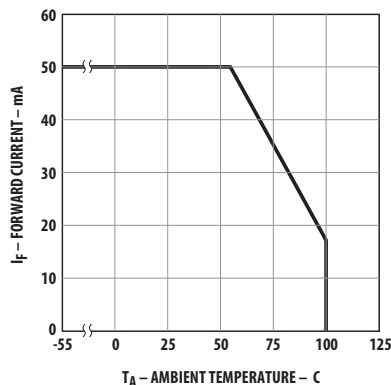


Figure 1. Forward current vs. temperature.

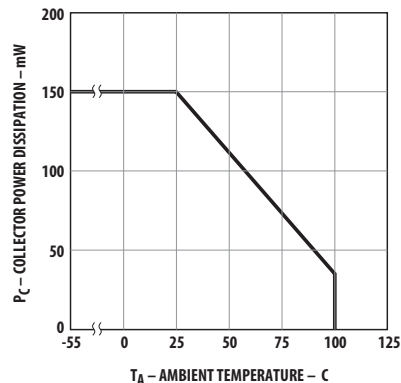


Figure 2. Collector power dissipation vs. temperature.

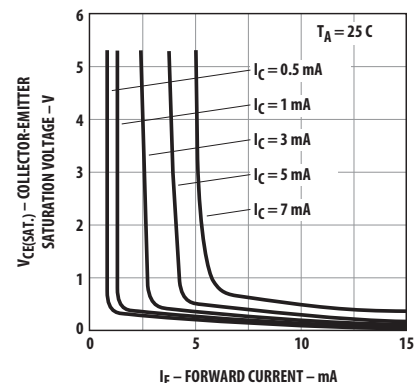


Figure 3. Collector-emitter saturation voltage vs. forward current.

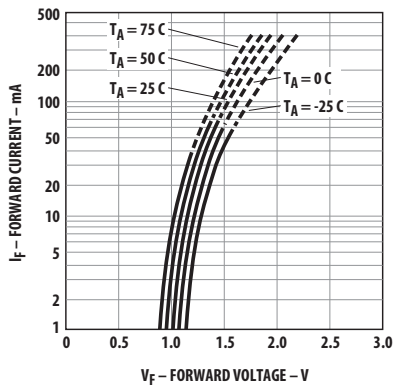


Figure 4. Forward current vs. forward voltage.

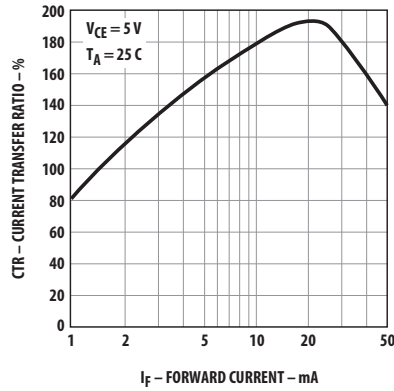


Figure 5. Current transfer ratio vs. forward current.

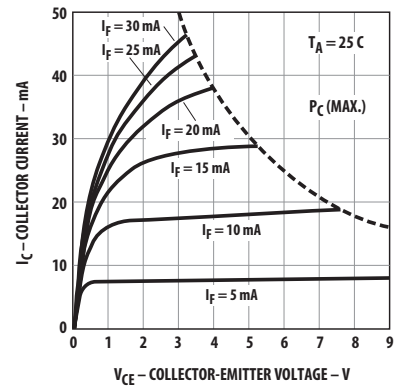


Figure 6. Collector current vs. collector-emitter voltage.

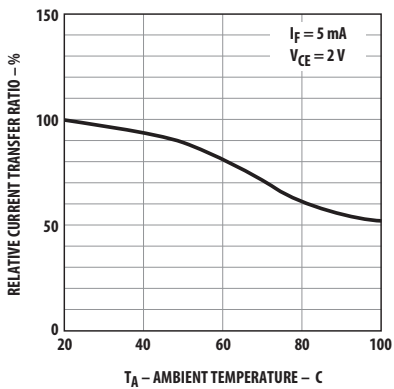


Figure 7. Relative current transfer ratio vs. temperature.

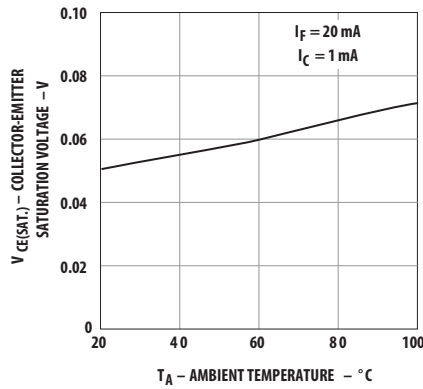


Figure 8. Collector-emitter saturation voltage vs. temperature.

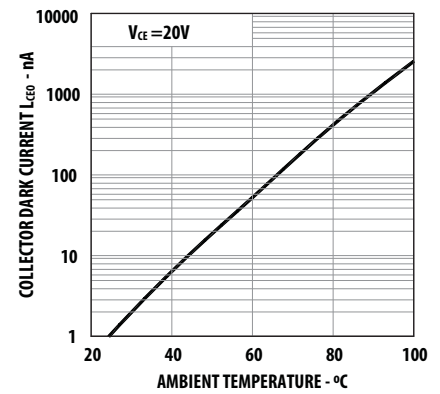


Figure 9. Collector dark current vs. temperature.

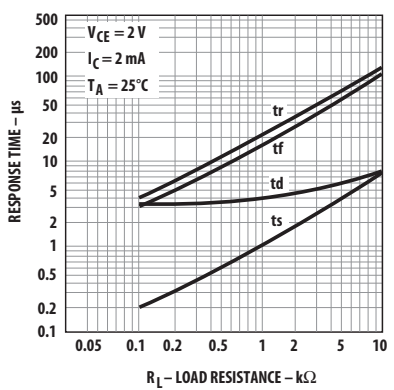


Figure 10. Response time vs. load resistance.

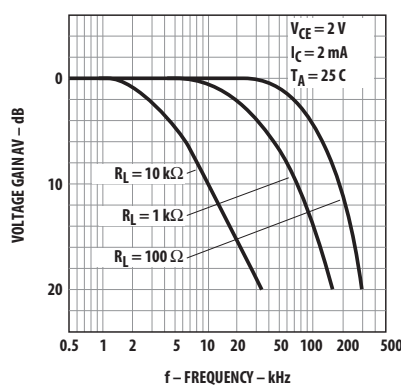
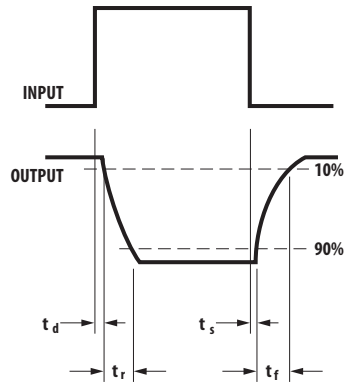
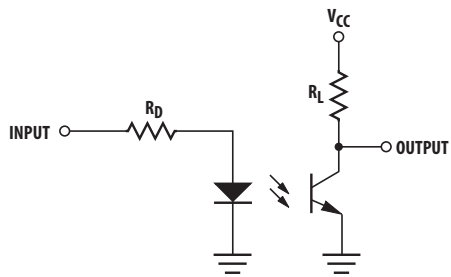
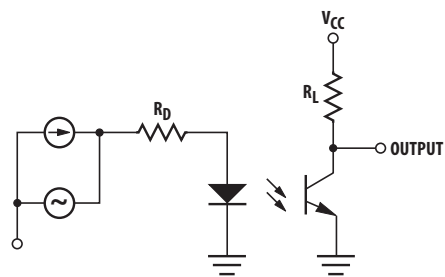


Figure 11. Frequency response.

Test Circuit for Response Time



Test Circuit for Frequency Response



For product information and a complete list of distributors, please go to our web site: www.avagotech.com

Avago, Avago Technologies, and the A logo are trademarks of Avago Technologies in the United States and other countries. Data subject to change. Copyright © 2005-2011 Avago Technologies. All rights reserved.
AV02-0774EN - September 13, 2011

AVAGO
TECHNOLOGIES



Компания «ЭлектроПласт» предлагает заключение долгосрочных отношений при поставках импортных электронных компонентов на взаимовыгодных условиях!

Наши преимущества:

- Оперативные поставки широкого спектра электронных компонентов отечественного и импортного производства напрямую от производителей и с крупнейших мировых складов;
- Поставка более 17-ти миллионов наименований электронных компонентов;
- Поставка сложных, дефицитных, либо снятых с производства позиций;
- Оперативные сроки поставки под заказ (от 5 рабочих дней);
- Экспресс доставка в любую точку России;
- Техническая поддержка проекта, помощь в подборе аналогов, поставка прототипов;
- Система менеджмента качества сертифицирована по Международному стандарту ISO 9001;
- Лицензия ФСБ на осуществление работ с использованием сведений, составляющих государственную тайну;
- Поставка специализированных компонентов (Xilinx, Altera, Analog Devices, Intersil, Interpoint, Microsemi, Aeroflex, Peregrine, Syfer, Eurofarad, Texas Instrument, Miteq, Cobham, E2V, MA-COM, Hittite, Mini-Circuits, General Dynamics и др.);

Помимо этого, одним из направлений компании «ЭлектроПласт» является направление «Источники питания». Мы предлагаем Вам помощь Конструкторского отдела:

- Подбор оптимального решения, техническое обоснование при выборе компонента;
- Подбор аналогов;
- Консультации по применению компонента;
- Поставка образцов и прототипов;
- Техническая поддержка проекта;
- Защита от снятия компонента с производства.



Как с нами связаться

Телефон: 8 (812) 309 58 32 (многоканальный)

Факс: 8 (812) 320-02-42

Электронная почта: org@eplast1.ru

Адрес: 198099, г. Санкт-Петербург, ул. Калинина, дом 2, корпус 4, литера А.