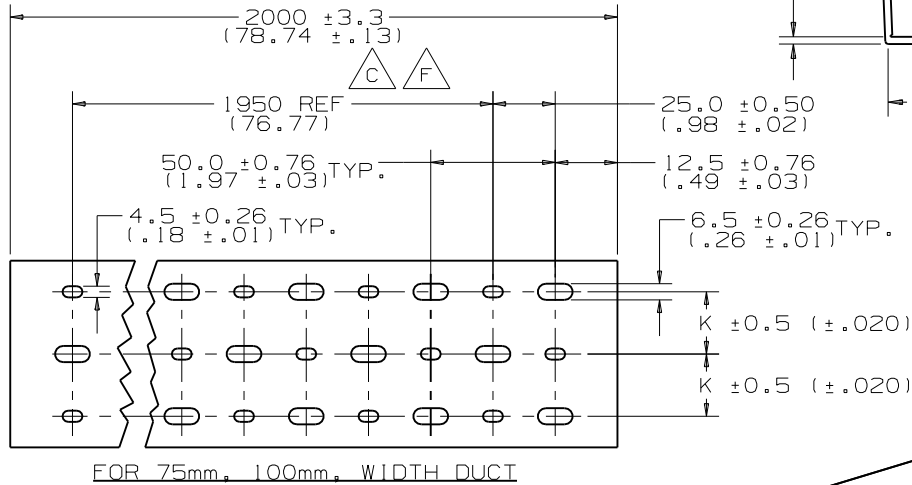
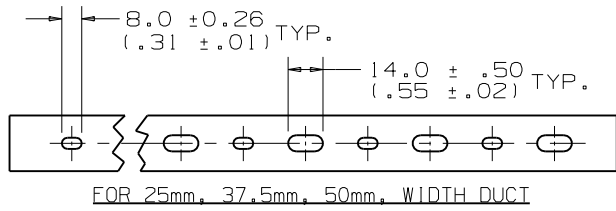
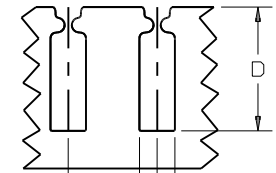
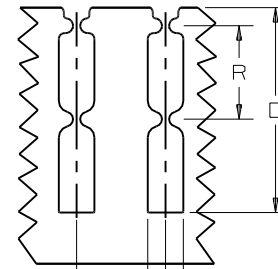
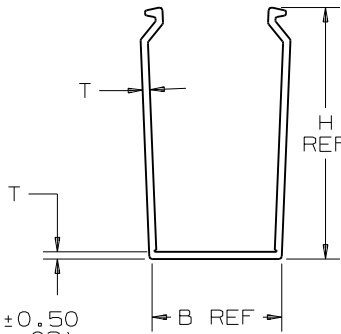


THIS COPY IS PROVIDED ON A RESTRICTED BASIS AND IS NOT TO BE USED IN ANY WAY DETRIMENTAL TO THE INTERESTS OF PANDUIT CORP.



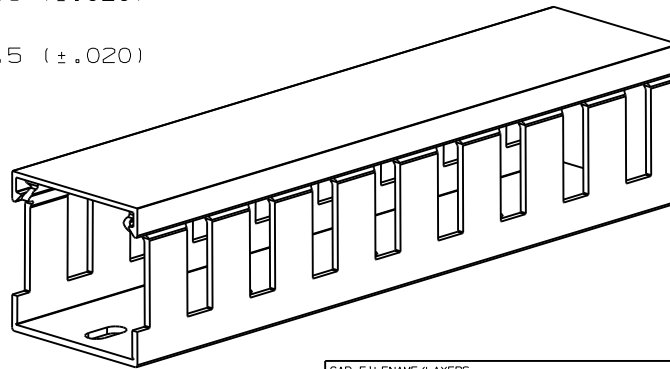
**MOUNTING HOLE DIMENSIONS**



FOR 37.5mm AND 50mm WALL HGT.

FOR 75mm WALL HGT.

CHANNEL EXAMPLE:  
 NNC 37 X 50 LG 2  
 TYPE 37mm WIDE 50mm HIGH  
 COLOR (LIGHT GRAY) LENGTH (m)



- NOTES:  
 1. "B" MEASURED AT BASE.  
 2. STANDARD LENGTH: 2 METER.  
 3. SEE CURRENT CATALOG FOR PART NUMBER DESIGNATIONS FOR TYPE, COLOR, AND LENGTH.  
 4. DUCT TYPE "NNC" PACKAGED WITH TYPE "NC" COVER.  
 5. DIMENSIONS ARE METRIC (INCHES).

CAD FILENAME/LAYERS D38539AA\_DC\_NNC\_01B.PRT

PANDUIT CORP. TINLEY PARK, ILLINOIS  
 WIRING DUCT AND COVER  
 TYPE "NNC" METRIC  
 CUSTOMER DRAWING

UNLESS OTHERWISE SPECIFIED, DIMENSIONAL TOLERANCES ARE:  
 (.X) ± (.XXX) ±  
 (.XX) ± 3.1 ANGLES ±

UNLESS OTHERWISE SPECIFIED, ALL DIMENSIONS ARE GIVEN IN INCHES, THIRD ANGLE PROJECTION.

| REV | DATE    | BY           | CHK | DESCRIPTION                            | ECN      | R   | CUST | SUP |
|-----|---------|--------------|-----|--|----------|-----|------|-----|
| I   | 9-18-06 | JCST         | JKG | B. CHANGED NOTES<br>A. ADDED NEW SIZES | 38539-04 | JKG | JKG  |     |
| R   | 11-2-02 | JHNU<br>JCST | JKG | RELEASED TO PRODUCTION                 | 38539-04 | HIW | HIW  |     |

|                  |  |                                |
|------------------|--|--------------------------------|
| DRAWN BY<br>JHNU | MAT'L: HALOGEN FREE<br>MODIFIED<br>POLYPHENYLENE<br>OXIDE<br>(PPO) | SCALE<br>NONE                  |
| DATE<br>8-2-02   |  | DRAWING NO.<br>38539-04        |
| CHK'D<br>JKG     |  | DWG<br>A<br>Sht 1 of 3<br>SIZE |

THIS COPY IS PROVIDED ON A RESTRICTED BASIS AND IS NOT TO BE USED IN ANY WAY DETRIMENTAL TO THE INTERESTS OF PANDUIT CORP.



| PROFILE DIMENSION         |                |                |              |                |
|---------------------------|----------------|----------------|--------------|----------------|
| NOMINAL DUCT SIZE (W X H) | B REF          | H REF          | T            | T TOL.         |
| 25 X 25                   | 24.6<br>(.97)  | 20.5<br>(.81)  | 1.4<br>(.06) | ±.26<br>(.010) |
| 25 X 37                   | 24.6<br>(.97)  | 33.0<br>(1.30) | 1.4<br>(.06) | ±.26<br>(.010) |
| 25 X 50                   | 24.6<br>(.97)  | 45.5<br>(1.79) | 2.0<br>(.08) | ±.30<br>(.012) |
| 25 X 75                   | 24.6<br>(.97)  | 70.5<br>(2.78) | 1.7<br>(.07) | ±.30<br>(.012) |
| 37 X 37                   | 37.1<br>(1.46) | 33.0<br>(1.30) | 1.8<br>(.07) | ±.30<br>(.012) |
| 37 X 50                   | 37.1<br>(1.46) | 45.5<br>(1.79) | 2.0<br>(.08) | ±.30<br>(.012) |
| 37 X 75                   | 37.1<br>(1.46) | 70.5<br>(2.78) | 2.0<br>(.08) | ±.36<br>(.014) |
| 50 X 50                   | 49.6<br>(1.95) | 45.5<br>(1.79) | 2.0<br>(.08) | ±.30<br>(.012) |
| 50 X 75                   | 49.6<br>(1.95) | 70.5<br>(2.78) | 2.0<br>(.08) | ±.36<br>(.014) |
| 50 X 100                  | 49.6<br>(1.95) | 95.5<br>(3.76) | 2.2<br>(.09) | ±.40<br>(.016) |
| 75 X 75                   | 74.6<br>(2.94) | 70.5<br>(2.78) | 2.0<br>(.08) | ±.40<br>(.016) |
| 100 X 50                  | 99.6<br>(3.92) | 45.5<br>(1.79) | 2.0<br>(.08) | ±.40<br>(.016) |
| 100 X 75                  | 98.6<br>(3.92) | 70.5<br>(2.78) | 2.5<br>(.10) | ±.50<br>(.020) |
| 100 X 100                 | 99.6<br>(3.92) | 95.5<br>(3.76) | 2.5<br>(.10) | ±.50<br>(.020) |



| MOUNTING HOLE      |               |
|--------------------|---------------|
| NOMINAL DUCT WIDTH | K             |
| 25                 | ±.5 (.02)     |
| 37                 | ----          |
| 50                 | ----          |
| 75                 | 25.0<br>(.98) |
| 100                | 25.0<br>(.98) |



| SLOT DIMENSION      |                |                 |
|---------------------|----------------|-----------------|
| NOMINAL DUCT HEIGHT | D              | R               |
| 25                  | ±.8 (.03)      | ±.75 (.02)      |
| 37                  | 13.6<br>(.54)  | -----           |
| 50                  | 24.7<br>(.97)  | -----           |
| 75                  | 34.8<br>(1.37) | -----           |
| 100                 | 57.6<br>(2.27) | 26.26<br>(1.03) |
|                     | 81.0<br>(3.19) | 38.0<br>(1.50)  |

ALL DIMENSIONS ARE METRIC (INCHES)

CAD FILENAME/LAYERS D38539AA\_DC\_NNC\_01B.PRT

PANDUIT CORP. TINLEY PARK, ILLINOIS

WIRING DUCT AND COVER  
TYPE "NNC" METRIC  
CUSTOMER DRAWING

UNLESS OTHERWISE SPECIFIED,  
DIMENSIONAL TOLERANCES ARE:  
(.X) ± (.XXX) ±  
(.XX) ± 3.1 (.12) ANGLES ±

UNLESS OTHERWISE SPECIFIED,  
ALL DIMENSIONS ARE GIVEN  
IN INCHES, THIRD ANGLE PROJECTION.

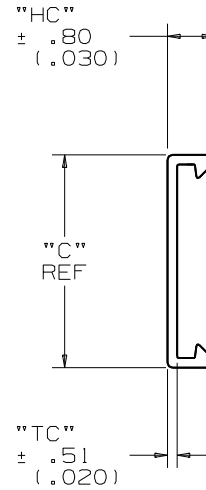
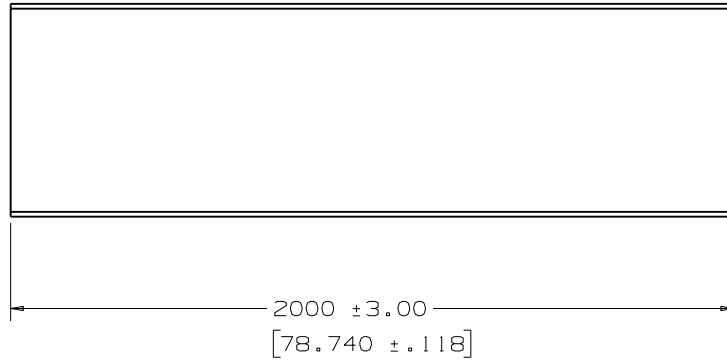
| REV | DATE    | BY           | CHK | DESCRIPTION                    | ECN      | CHK | CUST | SUP |
|-----|---------|--------------|-----|--------------------------------|----------|-----|------|-----|
| I   | 9-18-06 | JCST         | JKG | SEE SHEET 1 OF 3 FOR REVISIONS | 38539-04 | JKG | JKG  |     |
| R   | 11-2-02 | JHNU<br>JCST | JKG | SEE SHEET 1 OF 3 FOR REVISIONS | 38539-04 | HIW | HIW  |     |

|                  |  |                         |
|------------------|--|-------------------------|
| DRAWN BY<br>JHNU | MAT'L: HALOGEN FREE<br>MODIFIED<br>POLYPHENYLENE<br>OXIDE<br>(PPO) | SCALE<br>NONE           |
| DATE<br>8-2-02   |  | DRAWING NO.<br>38539-04 |
| CHK'D<br>JKG     |  | SHT 2 OF 3              |
|                  |  | DWG<br>A<br>SIZE        |



THIS COPY IS PROVIDED ON A RESTRICTED BASIS AND IS NOT TO BE USED IN ANY WAY DETRIMENTAL TO THE INTERESTS OF PANDUIT CORP.

A



E

| NOMINAL DUCT SIZE (W) | C REF          | HC           | TC            |
|-----------------------|----------------|--------------|---------------|
| 25                    | 24.6<br>(.97)  | 8.9<br>(.35) | 1.30<br>(.05) |
| 37                    | 37.1<br>(1.46) | 8.9<br>(.35) | 1.30<br>(.05) |
| 50                    | 49.6<br>(1.95) | 8.9<br>(.35) | 1.40<br>(.06) |
| 75                    | 74.6<br>(2.94) | 9.4<br>(.37) | 1.40<br>(.06) |
| 100                   | 99.6<br>(3.92) | 9.4<br>(.37) | 1.40<br>(.06) |

ALL DIMENSIONS ARE METRIC (INCHES)

CAD FILENAME/LAYERS D38539AA\_DC\_NNC\_01B

PANDUIT CORP TINLEY PARK, ILLINOIS

WIRING DUCT AND COVER  
TYPE "NNC" METRIC  
CUSTOMER DRAWING

UNLESS OTHERWISE SPECIFIED,  
DIMENSIONAL TOLERANCES ARE:  
(.X) ± (.XXX) ± .005  
(.XX) ± .01 ANGLES ± 1°

UNLESS OTHERWISE SPECIFIED,  
ALL DIMENSIONS ARE GIVEN IN  
INCHES, THIRD ANGLE PROJECTION.

| REV | DATE    | BY           | CHK | DESCRIPTION                    | ECN      | R   | CUST | SUP |
|-----|---------|--------------|-----|--------------------------------|----------|-----|------|-----|
| I   | 9-18-06 | JCST         | JKG | SEE SHEET 1 OF 3 FOR REVISIONS | 38539-04 | JKG | JKG  |     |
| R   | 11-2-02 | JHNU<br>JCST | JKG | SEE SHEET 1 OF 3 FOR REVISIONS | 38539-04 | HIW | HIW  |     |

DRAWN BY JHNU  
DATE 8-2-02  
CHK'D JKG

MAT'L: HALOGEN FREE  
MODIFIED  
POLYPHENYLENE  
OXIDE  
(PPO)

SCALE NONE  
DRAWING NO. 38539-04  
SHT 3 OF 3  
DWG SIZE A





Компания «ЭлектроПласт» предлагает заключение долгосрочных отношений при поставках импортных электронных компонентов на взаимовыгодных условиях!

Наши преимущества:

- Оперативные поставки широкого спектра электронных компонентов отечественного и импортного производства напрямую от производителей и с крупнейших мировых складов;
- Поставка более 17-ти миллионов наименований электронных компонентов;
- Поставка сложных, дефицитных, либо снятых с производства позиций;
- Оперативные сроки поставки под заказ (от 5 рабочих дней);
- Экспресс доставка в любую точку России;
- Техническая поддержка проекта, помощь в подборе аналогов, поставка прототипов;
- Система менеджмента качества сертифицирована по Международному стандарту ISO 9001;
- Лицензия ФСБ на осуществление работ с использованием сведений, составляющих государственную тайну;
- Поставка специализированных компонентов (Xilinx, Altera, Analog Devices, Intersil, Interpoint, Microsemi, Aeroflex, Peregrine, Syfer, Eurofarad, Texas Instrument, Miteq, Cobham, E2V, MA-COM, Hittite, Mini-Circuits, General Dynamics и др.);

Помимо этого, одним из направлений компании «ЭлектроПласт» является направление «Источники питания». Мы предлагаем Вам помощь Конструкторского отдела:

- Подбор оптимального решения, техническое обоснование при выборе компонента;
- Подбор аналогов;
- Консультации по применению компонента;
- Поставка образцов и прототипов;
- Техническая поддержка проекта;
- Защита от снятия компонента с производства.



#### Как с нами связаться

**Телефон:** 8 (812) 309 58 32 (многоканальный)

**Факс:** 8 (812) 320-02-42

**Электронная почта:** [org@eplast1.ru](mailto:org@eplast1.ru)

**Адрес:** 198099, г. Санкт-Петербург, ул. Калинина, дом 2, корпус 4, литера А.