

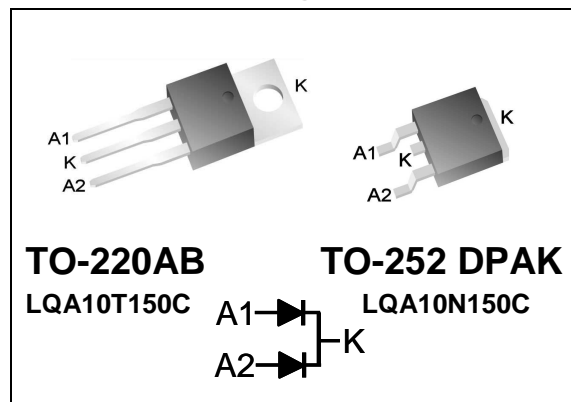
# LQA10T150C, LQA10N150C Qspeed™ Family

150 V, 10 A Common-Cathode Diode

## Product Summary

|                                    |      |    |
|------------------------------------|------|----|
| $I_{F(AVG)}$ per diode             | 5    | A  |
| $V_{RRM}$                          | 150  | V  |
| $Q_{RR}$ (Typ at 125 °C)           | 21.4 | nC |
| $I_{RRM}$ (Typ at 125 °C)          | 1.41 | A  |
| Softness $t_p/t_a$ (Typ at 125 °C) | 0.59 |    |

## Pin Assignment



## RoHS Compliant

Package uses Lead-free plating and "Green" mold compound Halogen free per IEC 61249-2-21.

## Absolute Maximum Ratings

Absolute maximum ratings are the values beyond which the device may be damaged or have its useful life impaired. Functional operation under these conditions is not implied.

| Symbol       | Parameter                            | Conditions  | Rating     | Units |
|--------------|--------------------------------------|---|------------|-------|
| $V_{RRM}$    | Peak repetitive reverse voltage      | $T_J = 25\text{ °C}$  | 150        | V     |
| $I_{F(AVG)}$ | Average forward current              | Per Diode, $T_J = 150\text{ °C}$ , $T_C = 130\text{ °C}$                            | 5          | A     |
|              |                                      | Per Device, $T_J = 150\text{ °C}$ , $T_C = 130\text{ °C}$                           | 10         | A     |
| $I_{FSM}$    | Non-repetitive peak surge current    | Per Diode, 60 Hz, ½ cycle   | 60         | A     |
| $I_{FSM}$    | Non-repetitive peak surge current    | Per Diode, ½ cycle of $t = 28\text{ }\mu\text{s}$<br>Sinusoid, $T_C = 25\text{ °C}$ | 350        | A     |
| $T_J$        | Operating junction temperature range |   | -55 to 150 | °C    |
| $T_{STG}$    | Storage temperature                  |   | -55 to 150 | °C    |
|              | Lead soldering temperature           | Leads at 1.6mm from case, 10 sec  | 300        | °C    |
| $P_D$        | Power dissipation                    | $T_C = 25\text{ °C}$  | 27.7       | W     |

## Thermal Resistance

| Symbol          | Resistance from:    | Conditions      | Rating | Units |
|-----------------|---------------------|-----------------|--------|-------|
| $R_{\theta JA}$ | Junction to ambient | TO-220AB (only) | 62     | °C/W  |
| $R_{\theta JC}$ | Junction to case    | Per Diode       | 4.5    | °C/W  |
|                 |                     | Per Device      | 2.3    | °C/W  |

## General Description

This device has the lowest  $Q_{RR}$  of any 150 V Silicon diode. Its recovery characteristics increase efficiency, reduce EMI and eliminate snubbers.

## Applications

- AC/DC and DC/DC output rectification
  - Output and freewheeling diodes
- Motor drive circuits
- DC-AC inverters

## Features

- Low  $Q_{RR}$ , Low  $I_{RRM}$ , Low  $t_{RR}$
- High  $di_F/dt$  capable
- Soft recovery

## Benefits

- Increases efficiency
  - Eliminates need for snubber circuits
  - Reduces EMI filter component size and count
- Enables extremely fast switching

**Electrical Specifications at  $T_J = 25\text{ }^\circ\text{C}$  (unless otherwise specified)**

| Symbol                                   | Parameter                                   | Conditions  | Min                               | Typ  | Max  | Units         |    |
|--|---|---|-----------------------------------|------|------|---------------|----|
| <b>DC Characteristics per diode</b>      |   |   |                                   |      |      |               |    |
| $I_R$                                    | Reverse current per diode                   | $V_R = 150\text{ V}, T_J = 25\text{ }^\circ\text{C}$                                | -                                 | -    | 250  | $\mu\text{A}$ |    |
|  |   | $V_R = 150\text{ V}, T_J = 125\text{ }^\circ\text{C}$                               | -                                 | 0.1  | -    | mA            |    |
| $V_F$                                    | Forward voltage per diode                   | $I_F = 5\text{ A}, T_J = 25\text{ }^\circ\text{C}$                                  | -                                 | 0.95 | 1.1  | V             |    |
|  |   | $I_F = 5\text{ A}, T_J = 150\text{ }^\circ\text{C}$                                 | -                                 | 0.8  | -    | V             |    |
| $C_J$                                    | Junction capacitance per diode              | $V_R = 10\text{ V}, 1\text{ MHz}$   | -                                 | 22   | -    | pF            |    |
| <b>Dynamic Characteristics per diode</b> |   |   |                                   |      |      |               |    |
| $t_{RR}$                                 | Reverse recovery time, per diode            | $di_F/dt = 100\text{ A}/\mu\text{s}$<br>$V_R = 100\text{ V},$<br>$I_F = 5\text{ A}$ | $T_J = 25\text{ }^\circ\text{C}$  | -    | 15.1 | -             | ns |
|  |   |   | $T_J = 125\text{ }^\circ\text{C}$ | -    | 23.6 | -             | ns |
| $Q_{RR}$                                 | Reverse recovery charge, per diode          | $di_F/dt = 100\text{ A}/\mu\text{s}$<br>$V_R = 100\text{ V},$<br>$I_F = 5\text{ A}$ | $T_J = 25\text{ }^\circ\text{C}$  | -    | 8.6  | 21.3          | nC |
|  |   |   | $T_J = 125\text{ }^\circ\text{C}$ | -    | 21.4 | -             | nC |
| $I_{RRM}$                                | Maximum reverse recovery current, per diode | $di_F/dt = 100\text{ A}/\mu\text{s}$<br>$V_R = 100\text{ V},$<br>$I_F = 5\text{ A}$ | $T_J = 25\text{ }^\circ\text{C}$  | -    | 0.92 | 2.06          | A  |
|  |   |   | $T_J = 125\text{ }^\circ\text{C}$ | -    | 1.41 | -             | A  |
| S  | Softness per diode = $\frac{t_b}{t_a}$      | $di_F/dt = 100\text{ A}/\mu\text{s}$<br>$V_R = 100\text{ V},$<br>$I_F = 5\text{ A}$ | $T_J = 25\text{ }^\circ\text{C}$  | -    | 0.69 | -             |    |
|  |   |   | $T_J = 125\text{ }^\circ\text{C}$ | -    | 0.59 | -             |    |

**Note to component engineers:** Q-Series diodes employ Schottky technologies in their design and construction. Therefore, component engineers should plan their test setups to be similar to traditional Schottky test setups. (For further details, see application note AN-300.)

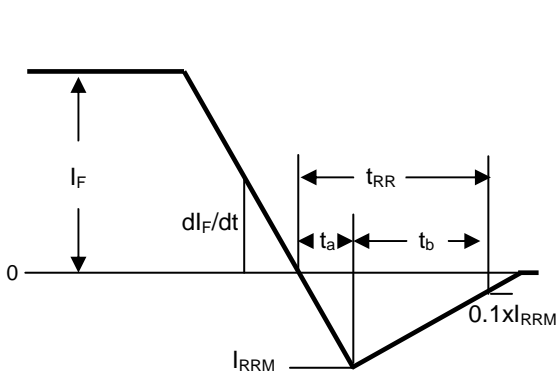


Figure 1. Reverse Recovery Definitions

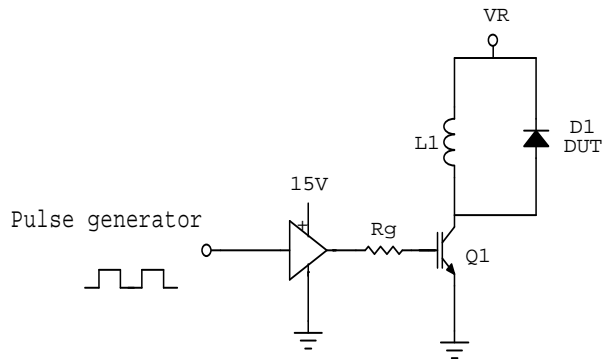


Figure 2. Reverse Recovery Test Circuit

## Electrical Specifications at $T_J = 25\text{ }^\circ\text{C}$ (unless otherwise specified)

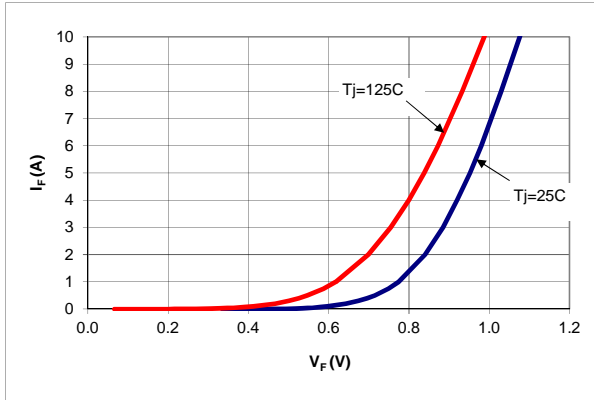


Figure 3. Typical  $I_F$  vs  $V_F$

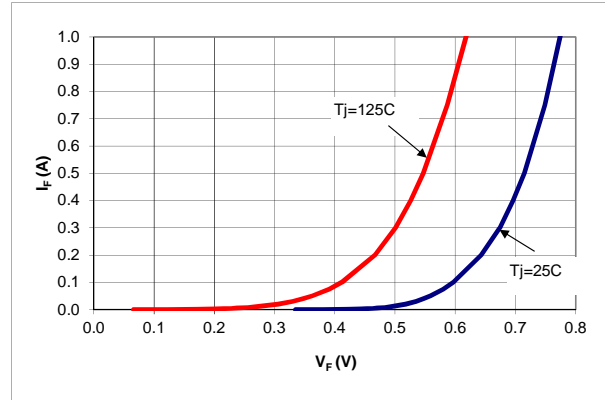


Figure 4. Typical  $I_F$  vs  $V_F$

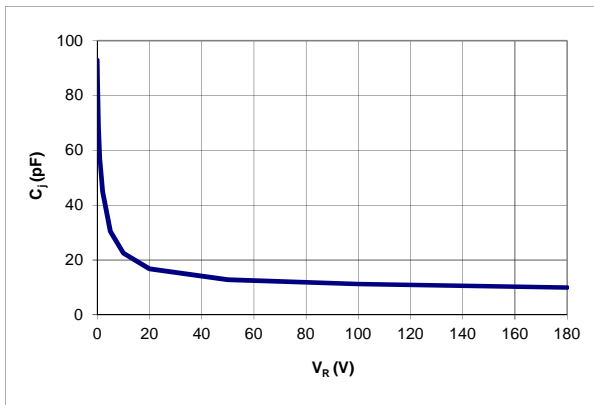


Figure 5. Typical  $C_j$  vs  $V_R$

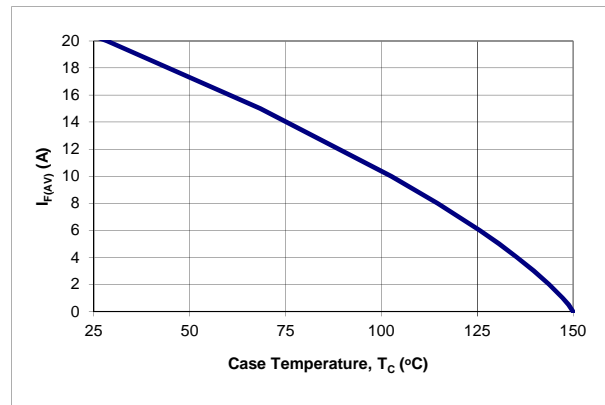


Figure 6. DC Current Derating Curve

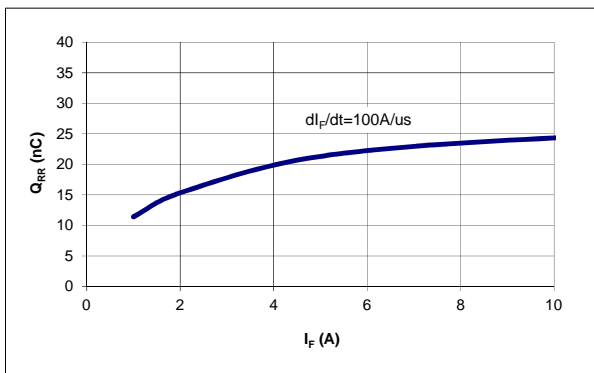


Figure 7. Typical  $Q_{RR}$  vs  $I_F$  at  $T_J=125\text{ }^\circ\text{C}$

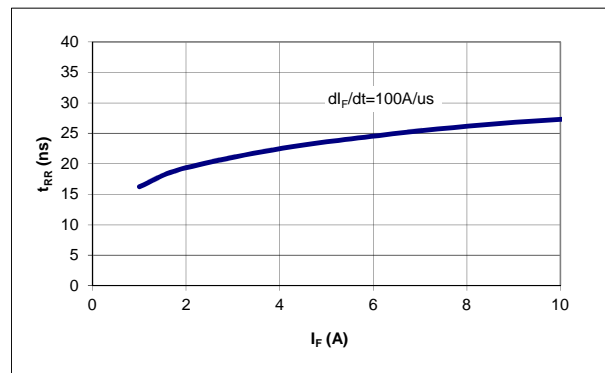


Figure 8. Typical  $t_{RR}$  vs  $I_F$  at  $T_J=125\text{ }^\circ\text{C}$

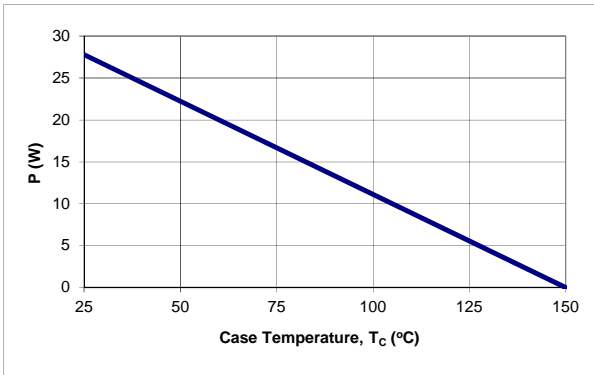


Figure 9. Power Derating Curve

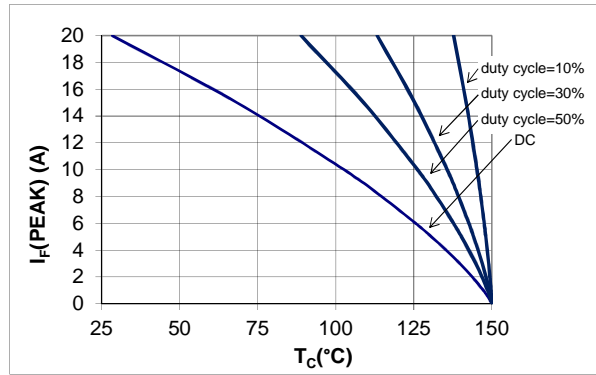


Figure 10. IF (Peak) vs TC, f = 70 kHz

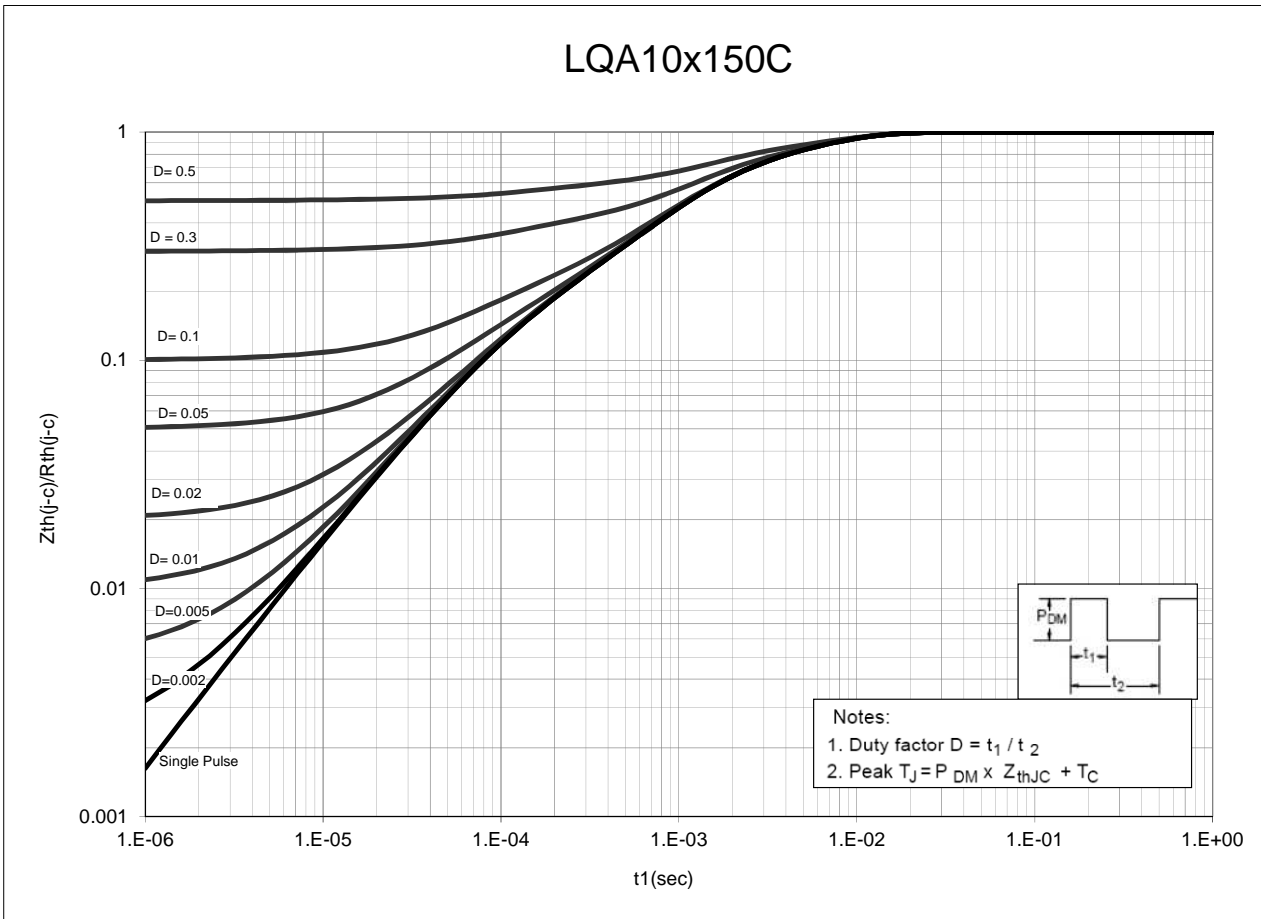
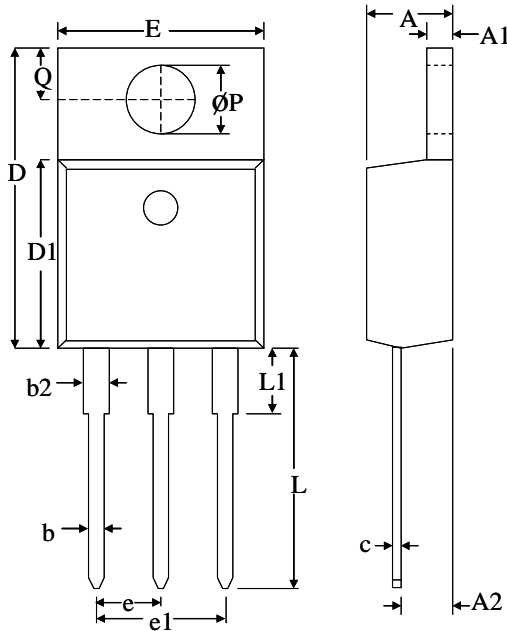


Figure 11. Normalized Maximum Transient Thermal Impedance

## Dimensional Outline Drawings

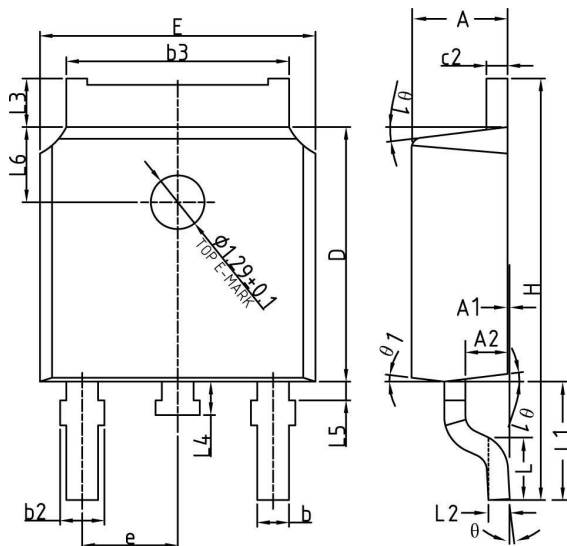
TO-220AB



| Dim | Millimeters |       |
|-----|-------------|-------|
|     | MIN         | MAX   |
| A   | 4.32        | 4.70  |
| A1  | 1.11        | 1.38  |
| A2  | 2.59        | 2.79  |
| b   | 0.77        | 1.00  |
| b2  | 1.23        | 1.36  |
| C   | 0.34        | 0.47  |
| D   | 14.71       | 15.75 |
| D1  | 9.05        | 9.25  |
| E   | 9.96        | 10.36 |
| e   | 2.44        | 2.64  |
| e1  | 4.98        | 5.18  |
| L   | 12.70       | 14.22 |
| L1  | -           | 3.90  |
| ØP  | 3.71        | 3.96  |
| Q   | 2.54        | 2.90  |

| Mechanical Mounting Method        | Maximum Torque / Pressure specification   |
|-----------------------------------|---|
| Screw through hole in package tab | 1 Newton Meter (nm) or 8.8 inch-pounds (lb-in)  |
| Clamp against package body        | 12.3 kilogram-force per square centimeter (kgf/cm <sup>2</sup> ) or 175 lbf/in <sup>2</sup> |

TO-252 DPAK



| Dim | Millimeters |       |
|-----|-------------|-------|
|     | MIN         | MAX   |
| A   | 2.20        | 2.38  |
| A1  | 0           | 0.10  |
| A2  | 0.90        | 1.10  |
| b   | 0.72        | 0.85  |
| b2  | 0.72        | 0.90  |
| b3  | 5.13        | 5.46  |
| c2  | 0.47        | 0.60  |
| D   | 6.00        | 6.20  |
| E   | 6.50        | 6.70  |
| e   | 2.186       | 2.386 |
| H   | 9.80        | 10.40 |
| L   | 1.40        | 1.70  |
| L1  | 2.90 REF    |       |
| L2  | 0.51 BSC    |       |
| L3  | 0.90        | 1.25  |
| L4  | 0.60        | 1.00  |
| L5  | 0.15        | 0.75  |
| L6  | 1.80 REF    |       |
| θ   | 0°          | 8°    |
| Ø1  | 5°          | 9°    |

**Soldering time and temperature:** This product has been designed for use with high-temperature, lead-free solder. The component leads can be subjected to a maximum temperature of 300 °C, for up to 10 seconds. See Application Note AN-303, for more details.

## Ordering Information

| Part Number | Package     | Packing         |
|-------------|-------------|-----------------|
| LQA10T150C  | TO-220AB    | 50 units/tube   |
| LQA10N150C  | TO-252 DPAK | 2500 units/reel |

The information contained in this document is subject to change without notice.

---

| <b>Revision</b> | <b>Notes</b>                                       | <b>Date</b> |
|-----------------|--|-------------|
| 1.0             | Initial Release                                    | 12/14       |
| 1.0             | Corrected $I_{F(AVG)}$ per diode to 5 A on page 1. | 01/15       |

## For the latest updates, visit our website: [www.power.com](http://www.power.com)

Power Integrations reserves the right to make changes to its products at any time to improve reliability or manufacturability. Power Integrations does not assume any liability arising from the use of any device or circuit described herein. POWER INTEGRATIONS MAKES NO WARRANTY HEREIN AND SPECIFICALLY DISCLAIMS ALL WARRANTIES INCLUDING, WITHOUT LIMITATION, THE IMPLIED WARRANTIES OF MERCHANTABILITY, FITNESS FOR A PARTICULAR PURPOSE, AND NON-INFRINGEMENT OF THIRD PARTY RIGHTS.

### PATENT INFORMATION

The products and applications illustrated herein (including transformer construction and circuits' external to the products) may be covered by one or more U.S. and foreign patents, or potentially by pending U.S. and foreign patent applications assigned to Power Integrations. A complete list of Power Integrations' patents may be found at [www.power.com](http://www.power.com). Power Integrations grants its customers a license under certain patent rights as set forth at <http://www.power.com/ip.htm>.

The PI Logo, TOPSwitch, TinySwitch, LinkSwitch, LYTSwitch, InnoSwitch, DPA-Switch, PeakSwitch, CAPZero, SENZero, LinkZero, HiperPFS, HiperTFS, HiperLCS, Qspeed, EcoSmart, Clampless, E-Shield, Filterfuse, FluxLink, StackFET, PI Expert and PI FACTS are trademarks of Power Integrations, Inc. Other trademarks are property of their respective companies. ©Copyright 2015 Power Integrations, Inc.

## Power Integrations Worldwide Sales Support Locations

### WORLD HEADQUARTERS

5245 Hellyer Avenue  
San Jose, CA 95138, USA.  
Main: +1-408-414-9200  
Customer Service:  
Phone: +1-408-414-9665  
Fax: +1-408-414-9765  
e-mail: [usasales@power.com](mailto:usasales@power.com)

### GERMANY

Lindwurmstrasse 114  
80337, Munich  
Germany  
Phone: +49-895-527-39110  
Fax: +49-895-527-39200  
e-mail: [eurosales@power.com](mailto:eurosales@power.com)

### JAPAN

Kosei Dai-3 Building  
2-12-11, Shin-Yokohama,  
Kohoku-ku, Yokohama-shi,  
Kanagawa 222-0033  
Japan  
Phone: +81-45-471-1021  
Fax: +81-45-471-3717  
e-mail: [japansales@power.com](mailto:japansales@power.com)

### TAIWAN

5F, No. 318, Nei Hu Rd.,  
Sec. 1  
Nei Hu District  
Taipei 11493, Taiwan R.O.C.  
Phone: +886-2-2659-4570  
Fax: +886-2-2659-4550  
e-mail: [taiwansales@power.com](mailto:taiwansales@power.com)

### CHINA (SHANGHAI)

Rm 2410, Charity Plaza, No. 88,  
North Caoxi Road,  
Shanghai, PRC 200030  
Phone: +86-21-6354-6323  
Fax: +86-21-6354-6325  
e-mail: [chinasales@power.com](mailto:chinasales@power.com)

### INDIA

#1, 14<sup>th</sup> Main Road  
Vasanthanagar  
Bangalore-560052  
India  
Phone: +91-80-4113-8020  
Fax: +91-80-4113-8023  
e-mail: [indiasales@power.com](mailto:indiasales@power.com)

### KOREA

RM 602, 6FL  
Korea City Air Terminal B/D,  
159-6  
Samsung-Dong, Kangnam-Gu,  
Seoul, 135-728 Korea  
Phone: +82-2-2016-6610  
Fax: +82-2-2016-6630  
e-mail: [koreasales@power.com](mailto:koreasales@power.com)

### UK

First Floor, Unit 15, Meadway  
Court, Rutherford Close,  
Stevenage, Herts. SG1 2EF  
United Kingdom  
Phone: +44 (0) 1252-730-141  
Fax: +44 (0) 1252-727-689  
e-mail: [eurosales@power.com](mailto:eurosales@power.com)

### CHINA (SHENZHEN)

17/F, Hivac Building, No. 2, Keji  
Nan 8th Road, Nanshan District,  
Shenzhen, China, 518057  
Phone: +86-755-8672-8689  
Fax: +86-755-8672-8690  
e-mail: [chinasales@power.com](mailto:chinasales@power.com)

### ITALY

Via Milanese 20, 3<sup>rd</sup> Fl.  
20099 Sesto San Giovanni  
(MI) Italy  
Phone: +39-024-550-8701  
Fax: +39-028-928-6009  
e-mail: [eurosales@power.com](mailto:eurosales@power.com)

### SINGAPORE

51 Newton Road,  
#19-01/05 Goldhill Plaza  
Singapore, 308900  
Phone: +65-6358-2160  
Fax: +65-6358-2015  
e-mail: [singaporesales@power.com](mailto:singaporesales@power.com)

### APPLICATIONS HOTLINE

World Wide +1-408-414-9660

### APPLICATIONS FAX

World Wide +1-408-414-9760





Компания «ЭлектроПласт» предлагает заключение долгосрочных отношений при поставках импортных электронных компонентов на взаимовыгодных условиях!

Наши преимущества:

- Оперативные поставки широкого спектра электронных компонентов отечественного и импортного производства напрямую от производителей и с крупнейших мировых складов;
- Поставка более 17-ти миллионов наименований электронных компонентов;
- Поставка сложных, дефицитных, либо снятых с производства позиций;
- Оперативные сроки поставки под заказ (от 5 рабочих дней);
- Экспресс доставка в любую точку России;
- Техническая поддержка проекта, помощь в подборе аналогов, поставка прототипов;
- Система менеджмента качества сертифицирована по Международному стандарту ISO 9001;
- Лицензия ФСБ на осуществление работ с использованием сведений, составляющих государственную тайну;
- Поставка специализированных компонентов (Xilinx, Altera, Analog Devices, Intersil, Interpoint, Microsemi, Aeroflex, Peregrine, Syfer, Eurofarad, Texas Instrument, Miteq, Cobham, E2V, MA-COM, Hittite, Mini-Circuits, General Dynamics и др.);

Помимо этого, одним из направлений компании «ЭлектроПласт» является направление «Источники питания». Мы предлагаем Вам помощь Конструкторского отдела:

- Подбор оптимального решения, техническое обоснование при выборе компонента;
- Подбор аналогов;
- Консультации по применению компонента;
- Поставка образцов и прототипов;
- Техническая поддержка проекта;
- Защита от снятия компонента с производства.



#### Как с нами связаться

**Телефон:** 8 (812) 309 58 32 (многоканальный)

**Факс:** 8 (812) 320-02-42

**Электронная почта:** [org@eplast1.ru](mailto:org@eplast1.ru)

**Адрес:** 198099, г. Санкт-Петербург, ул. Калинина, дом 2, корпус 4, литера А.