

FEATURES

- RoHS compliant
- Output regulation <1.5%
- Output programmable
- Power density 0.85W/cm³
- Single isolated output
- SIP & DIP package styles
- UL 94V-0 package material
- No heatsink required
- Footprint from 1.17cm²
- 1kVDC isolation
- 5V, 12V, 24V & 48V input
- 5V, 9V, 12V & 15V output
- SMD construction
- Fully encapsulated with toroidal magnetics
- No external components required
- MTTF up to 2.4 million hours
- PCB mounting

DESCRIPTION

The NMF series of DC/DC converters is used where a tightly regulated supply is required. They are ideal for situations where the input voltage is not tightly controlled. The output trim pin makes the device particularly suitable for applications requiring a programmable output voltage. The 5V output version can be used to give a regulated output, adjustable between 1.2V and 5.0V with a single resistor. An option not to have this function is available, on SIP package type parts, prefix C with N. The single rail regulated output makes the ideal choice to power sensors, such as pressure transducers, hall effect sensors and mass airflow sensors.



SELECTION GUIDE

| Order Code | Nominal Input Voltage | Output Voltage | Output Current | Power Out | Efficiency | Isolation Capacitance | MTTF | Package Style | |
|-----------------|-----------------------|----------------|----------------|-----------|------------|-----------------------|------|---------------|--------------------------------|
| | V | V | mA | mW | % | pF | kHrs | | |
| NMF0505DC | 5 | 5 | 100 | 500 | 50 | 37 | 1307 | DIP | |
| NMF0512DC | 5 | 12 | 83 | 1000 | 62 | 46 | 512 | DIP | |
| NMF0515DC | 5 | 15 | 67 | 1000 | 62 | 52 | 316 | DIP | |
| NMF0505SC | 5 | 5 | 100 | 500 | 50 | 37 | 1307 | SIP | |
| NMF0512SC | 5 | 12 | 83 | 1000 | 62 | 46 | 512 | SIP | |
| NMF0515SC | 5 | 15 | 67 | 1000 | 62 | 52 | 316 | SIP | |
| NMF1205DC | 12 | 5 | 100 | 500 | 50 | 62 | 456 | DIP | |
| NMF1212DC | 12 | 12 | 83 | 1000 | 62 | 98 | 290 | DIP | |
| NMF1215DC | 12 | 15 | 67 | 1000 | 62 | 108 | 218 | DIP | |
| NMF1205SC | 12 | 5 | 100 | 500 | 50 | 62 | 456 | SIP | |
| NMF1212SC | 12 | 12 | 83 | 1000 | 62 | 98 | 290 | SIP | |
| NMF1215SC | 12 | 15 | 67 | 1000 | 62 | 108 | 218 | SIP | |
| NMF2405DC | 24 | 5 | 100 | 500 | 50 | 69 | 843 | DIP | |
| NMF2409DC | 24 | 9 | 100 | 900 | 62 | 106 | 613 | DIP | |
| NMF2412DC | 24 | 12 | 83 | 1000 | 62 | 129 | 422 | DIP | |
| NMF2415DC | 24 | 15 | 67 | 1000 | 62 | 151 | 279 | DIP | |
| NMF2405SC | 24 | 5 | 100 | 500 | 50 | 69 | 843 | SIP | |
| NMF2409SC | 24 | 9 | 100 | 900 | 62 | 106 | 613 | SIP | |
| NMF2412SC | 24 | 12 | 83 | 1000 | 62 | 129 | 422 | SIP | |
| NMF2415SC | 24 | 15 | 67 | 1000 | 62 | 151 | 279 | SIP | |
| Obsolete | | | | | | | | | Recommended Alternative |
| NMF0509DC | 5 | 9 | 100 | 900 | 62 | 42 | 825 | DIP | Contact Murata |
| NMF0509SC | 5 | 9 | 100 | 900 | 62 | 42 | 825 | SIP | Contact Murata |
| NMF1209DC | 12 | 9 | 100 | 900 | 62 | 82 | 379 | DIP | Contact Murata |
| NMF1209SC | 12 | 9 | 100 | 900 | 62 | 82 | 379 | SIP | Contact Murata |
| NMF4805DC | 48 | 5 | 100 | 500 | 50 | 51 | 200 | DIP | Contact Murata |
| NMF4809DC | 48 | 9 | 100 | 900 | 62 | 86 | 283 | DIP | Contact Murata |
| NMF4812DC | 48 | 12 | 83 | 1000 | 62 | 108 | 162 | DIP | Contact Murata |
| NMF4815DC | 48 | 15 | 67 | 1000 | 62 | 127 | 135 | DIP | Contact Murata |
| NMF4805SC | 48 | 5 | 100 | 500 | 50 | 51 | 200 | SIP | Contact Murata |
| NMF4809SC | 48 | 9 | 100 | 900 | 62 | 86 | 283 | SIP | Contact Murata |
| NMF4812SC | 48 | 12 | 83 | 1000 | 62 | 108 | 162 | SIP | Contact Murata |
| NMF4815SC | 48 | 15 | 67 | 1000 | 62 | 127 | 135 | SIP | Contact Murata |

When operated with additional external load capacitance the rise time of the input voltage will determine the maximum external capacitance value for guaranteed start up. The slower the rise time of the input voltage the greater the maximum value of the additional external capacitance for reliable start up.

ABSOLUTE MAXIMUM RATINGS

| | |
|---|----------|
| Short-circuit protection ² | 1 second |
| Lead temperature 1.5mm from case for 10 seconds | 300°C |
| Internal power dissipation | 450mW |
| Input voltage V _{IN} , NMF05 types | 7V |
| Input voltage V _{IN} , NMF12 types | 15V |
| Input voltage V _{IN} , NMF24 types | 28V |
| Input voltage V _{IN} , NMF48 types | 54V |

1. Calculated using MIL-HDBK-217F with nominal input voltage at full load.

2. Supply voltage must be discontinued at the end of the short circuit duration.

All specifications typical at T_A=25°C, nominal input voltage and rated output current unless otherwise specified.

INPUT CHARACTERISTICS

| Parameter | Conditions | Min. | Typ. | Max. | Units |
|---------------|---------------------------------------|------|------|------|-------|
| Voltage range | Continuous operation, 5V input types | 4.75 | 5 | 5.25 | V |
| | Continuous operation, 12V input types | 11.4 | 12 | 12.6 | |
| | Continuous operation, 24V input types | 22.8 | 24 | 25.2 | |
| | Continuous operation, 48V input types | 45.6 | 48 | 50.4 | |

OUTPUT CHARACTERISTICS

| Parameter | Conditions | Min. | Typ. | Max. | Units |
|----------------------------|---|------|------|------|--------|
| Voltage set point accuracy | 100% load | | | 5 | % |
| Rated power ¹ | T _A = 0°C to 70°C | | | 1 | W |
| Line regulation | High V _{IN} to low V _{IN} | | | 0.25 | %/% |
| Load regulation | 10% load to rated load | | 0.9 | 1.5 | % |
| Ripple & noise | BW=DC to 20MHz, all output types | | | 60 | mV p-p |

ISOLATION CHARACTERISTICS

| Parameter | Conditions | Min. | Typ. | Max. | Units |
|------------------------|---------------------------|------|------|------|-------|
| Isolation test voltage | Flash tested for 1 second | 1000 | | | VDC |
| Resistance | Viso= 500VDC | 0.1 | | | GΩ |

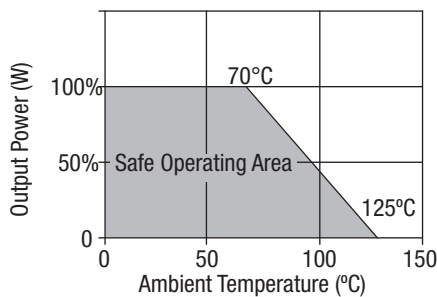
GENERAL CHARACTERISTICS

| Parameter | Conditions | Min. | Typ. | Max. | Units |
|---------------------|-----------------|------|------|------|-------|
| Switching frequency | All input types | | 90 | | kHz |

TEMPERATURE CHARACTERISTICS

| Parameter | Conditions | Min. | Typ. | Max. | Units |
|--------------------------------|---------------------|------|------|------|-------|
| Specification | All output types | 0 | | 70 | °C |
| Case temperature above ambient | | | 38 | | |
| Storage | | -55 | | 150 | |
| Cooling | Free air convection | | | | |

TEMPERATURE DERATING GRAPH



RoHS COMPLIANCE INFORMATION

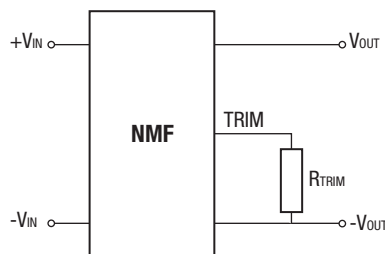


This series is compatible with RoHS soldering systems with a peak wave solder temperature of 300°C for 10 seconds. The pin termination finish on the SIP package type is Tin Plate, Hot Dipped over Matte Tin over Nickel Preplate. The DIP types are Matte Tin over Nickel Preplate. Both types in this series are backward compatible with Sn/Pb soldering systems.

For further information, please visit www.murata-ps.com/rohs

OUTPUT VOLTAGE ADJUSTMENT (for 5V output variants)

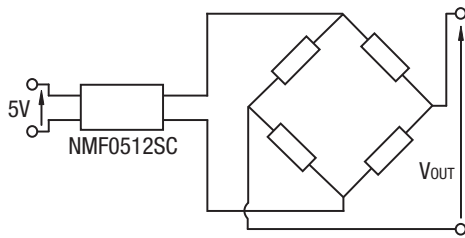
The trimming (adjust) input on the device allows output voltage adjustment from 1.2V to 3.3VDC by using a resistor as shown here. The table below provides R_{TRIM} values for the most commonly required output voltages. For applications not requiring the TRIM function, this pin must be left unconnected for normal regulated output.



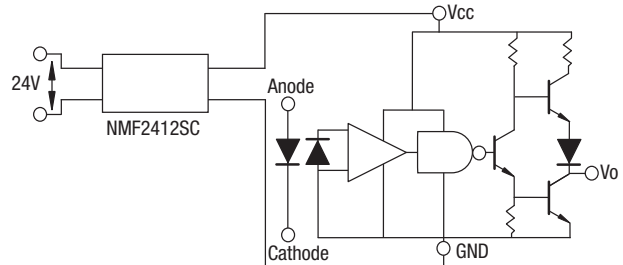
| V _{OUT SET} (V) | R _{TRIM} (Ω) |
|--------------------------|-----------------------|
| 1.2 | 0 |
| 1.5 | 64 |
| 2.0 | 224 |
| 2.1 | 263 |
| 2.2 | 304 |
| 2.5 | 448 |
| 3.3 | 1071 |

TYPICAL APPLICATIONS

Pressure sensor, or strain gauge equivalent circuit



Scmitt Trigger



TECHNICAL NOTES

ISOLATION VOLTAGE

'Hi Pot Test', 'Flash Tested', 'Withstand Voltage', 'Proof Voltage', 'Dielectric Withstand Voltage' & 'Isolation Test Voltage' are all terms that relate to the same thing, a test voltage, applied for a specified time, across a component designed to provide electrical isolation, to verify the integrity of that isolation.

Murata Power Solutions NMF series of DC/DC converters are all 100% production tested at their stated isolation voltage. This is 1kVDC for 1 second.

A question commonly asked is, "What is the continuous voltage that can be applied across the part in normal operation?"

For a part holding no specific agency approvals, such as the NMF series, both input and output should normally be maintained within SELV limits i.e. less than 42.4V peak, or 60VDC. The isolation test voltage represents a measure of immunity to transient voltages and the part should never be used as an element of a safety isolation system. The part could be expected to function correctly with several hundred volts offset applied continuously across the isolation barrier; but then the circuitry on both sides of the barrier must be regarded as operating at an unsafe voltage and further isolation/insulation systems must form a barrier between these circuits and any user-accessible circuitry according to safety standard requirements.

REPEATED HIGH-VOLTAGE ISOLATION TESTING

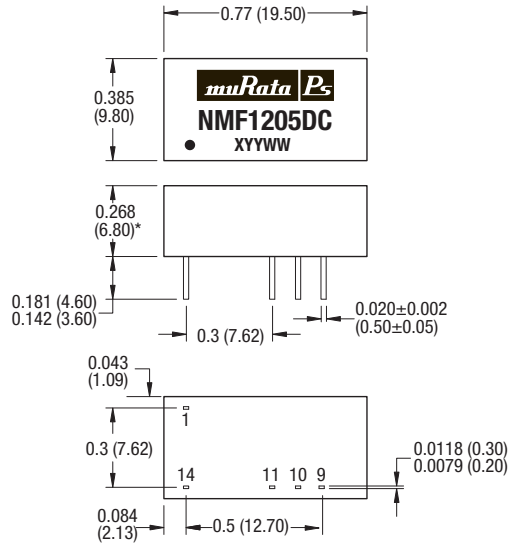
It is well known that repeated high-voltage isolation testing of a barrier component can actually degrade isolation capability, to a lesser or greater degree depending on materials, construction and environment. The NMF series has toroidal isolation transformers, with no additional insulation between primary and secondary windings of enameled wire. While parts can be expected to withstand several times the stated test voltage, the isolation capability does depend on the wire insulation. Any material, including this enamel (typically polyurethane) is susceptible to eventual chemical degradation when subject to very high applied voltages thus implying that the number of tests should be strictly limited. We therefore strongly advise against repeated high voltage isolation testing, but if it is absolutely required, that the voltage be reduced by 20% from specified test voltage.

This consideration equally applies to agency recognized parts rated for better than functional isolation where the wire enamel insulation is always supplemented by a further insulation system of physical spacing or barriers.

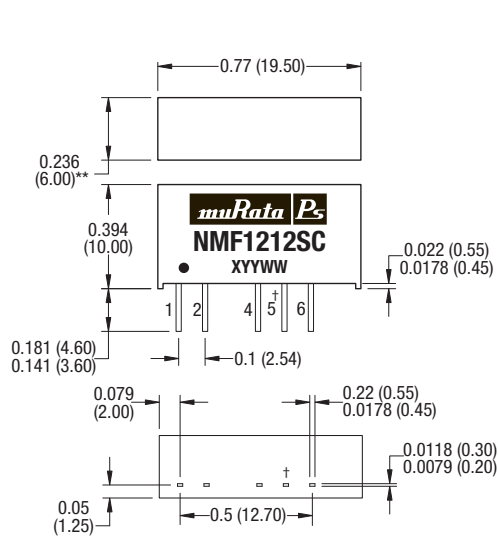
PACKAGE SPECIFICATIONS

MECHANICAL DIMENSIONS

DIP package



SIP package



† Trim pin not fitted on suffix SNC parts.

* 0.303 (7.70) for 24V & 48V variants

** 0.295 (7.50) for 24V & 48V variants

All dimensions in inches ±0.01 (mm ±0.25mm). All pins on a 0.1 (2.54) pitch and within ±0.01 (0.25) of true position.

Weight: 2.4g (DIP) 2.1g (SIP) except for NMF24XX and NMF48XX DIP & SIP : 2.9g

PIN CONNECTIONS - 14 PIN DIP

| Pin | Function |
|-----|----------|
| 1 | -VIN |
| 9 | +VOUT |
| 10 | TRIM |
| 11 | -VOUT |
| 14 | +VIN |

PIN CONNECTIONS - 7 PIN SIP

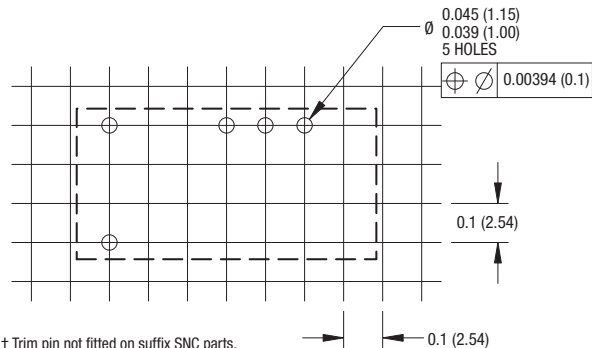
| Pin | Function |
|-----|----------|
| 1 | +VIN |
| 2 | -VIN |
| 4 | -VOUT |
| 5 | TRIM† |
| 6 | +VOUT |

1. See derating graph.

PACKAGE SPECIFICATIONS (continued)

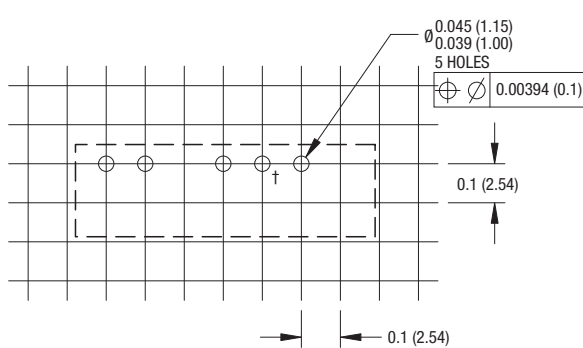
RECOMMENDED FOOTPRINT DETAILS

14 Pin DIP Package



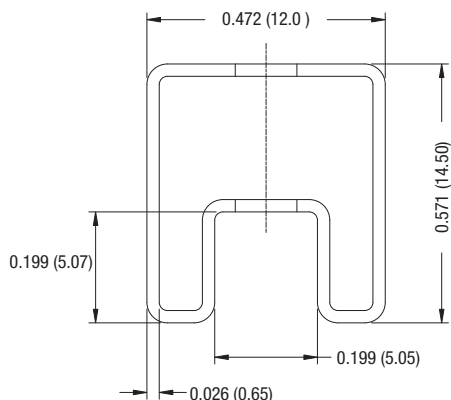
† Trim pin not fitted on suffix SNC parts.
All dimensions in inches ± 0.01 (mm ± 0.25 mm).

7 Pin SIP Package



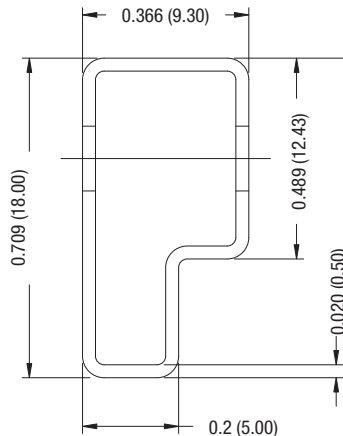
TUBE OUTLINE DIMENSIONS

14 Pin DIP Tube



All dimensions in inches ± 0.01 (mm ± 0.25 mm).
Tube length (14 Pin DIP) : 20.47 (520mm ± 2 mm).
Tube length (7 Pin SIP) : 20.47 (520mm ± 2 mm).

7 Pin SIP Tube



Tube Quantity : 25

Murata Power Solutions, Inc.
11 Cabot Boulevard, Mansfield, MA 02048-1151 U.S.A.
ISO 9001 and 14001 REGISTERED



This product is subject to the following **operating requirements** and the **Life and Safety Critical Application Sales Policy**:
Refer to: <http://www.murata-ps.com/requirements/>

Murata Power Solutions, Inc. makes no representation that the use of its products in the circuits described herein, or the use of other technical information contained herein, will not infringe upon existing or future patent rights. The descriptions contained herein do not imply the granting of licenses to make, use, or sell equipment constructed in accordance therewith. Specifications are subject to change without notice.
© 2013 Murata Power Solutions, Inc.



Компания «ЭлектроПласт» предлагает заключение долгосрочных отношений при поставках импортных электронных компонентов на взаимовыгодных условиях!

Наши преимущества:

- Оперативные поставки широкого спектра электронных компонентов отечественного и импортного производства напрямую от производителей и с крупнейших мировых складов;
- Поставка более 17-ти миллионов наименований электронных компонентов;
- Поставка сложных, дефицитных, либо снятых с производства позиций;
- Оперативные сроки поставки под заказ (от 5 рабочих дней);
- Экспресс доставка в любую точку России;
- Техническая поддержка проекта, помощь в подборе аналогов, поставка прототипов;
- Система менеджмента качества сертифицирована по Международному стандарту ISO 9001;
- Лицензия ФСБ на осуществление работ с использованием сведений, составляющих государственную тайну;
- Поставка специализированных компонентов (Xilinx, Altera, Analog Devices, Intersil, Interpoint, Microsemi, Aeroflex, Peregrine, Syfer, Eurofarad, Texas Instrument, Miteq, Cobham, E2V, MA-COM, Hittite, Mini-Circuits, General Dynamics и др.);

Помимо этого, одним из направлений компании «ЭлектроПласт» является направление «Источники питания». Мы предлагаем Вам помощь Конструкторского отдела:

- Подбор оптимального решения, техническое обоснование при выборе компонента;
- Подбор аналогов;
- Консультации по применению компонента;
- Поставка образцов и прототипов;
- Техническая поддержка проекта;
- Защита от снятия компонента с производства.



Как с нами связаться

Телефон: 8 (812) 309 58 32 (многоканальный)

Факс: 8 (812) 320-02-42

Электронная почта: org@eplast1.ru

Адрес: 198099, г. Санкт-Петербург, ул. Калинина, дом 2, корпус 4, литера А.