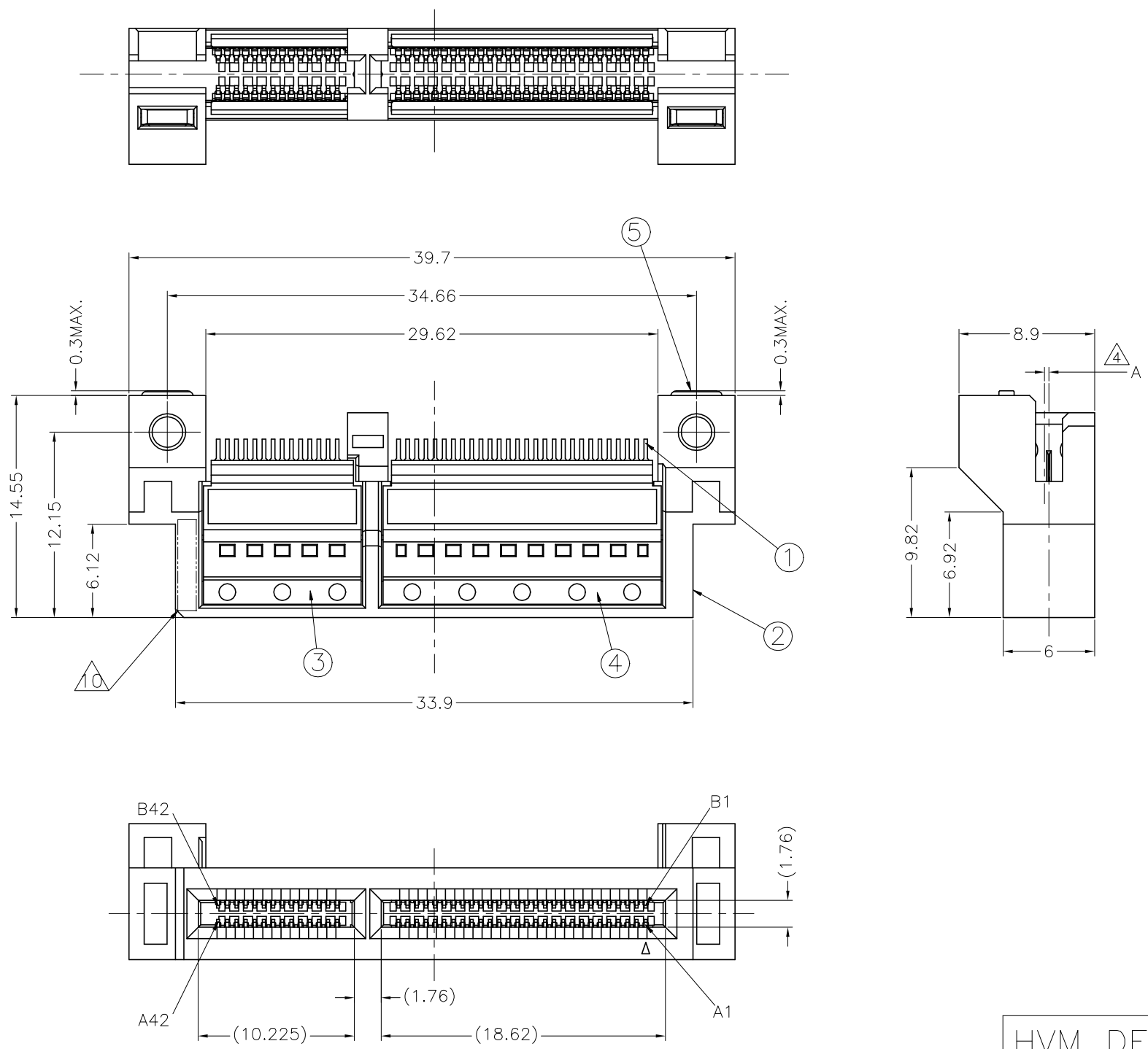


REVISIONS					
P	LTR	DESCRIPTION	DATE	DWN	APVD
8		PRELIMINARY	09OCT2018	J.T	K.K

NOTE

- ① HOUSING AND COVER: LCP, UL94-V0, BLACK.
CONTACTS: COPPER ALLOY.
- ② GOLD PLATED ON CONTACT AREA.
TIN PLATE ON SOLDER TAIL AREA.
- ③ APPLICABLE HOST BOARD THICKNESS
- ④ OFFSET AMOUNT BETWEEN AIC BOARD AND
HOST BOARD CENTER LINE.
- ⑤ SEE MSA SPECIFICATION FOR ADDITIONAL PADDLE
CARD LAYOUTS COMPATIBLE WITH THIS RECEPTACLE
AND FOR OPTIONAL SPLIT CONTACT PAD LAYOUTS
FOR THE PADDLE CARD. SPECIFICATION PINOUT
MAY ALSO DESIGNATE PAD SEQUENCE DIFFERENT
FROM ILLUSTRATION.
- ⑥ POSITIONS DESIGNATED AS "SIGNAL" ARE
RECOMMENDED LOCATIONS FOR HIGH SPEED
DIFFERENTIAL PAIR SIGNALING. THESE LOCATIONS
MAY ALSO BE USED FOR SUPPORTING SIDEBAND
SIGNALS OR OTHER UTILITY PURPOSES. POSITIONS
DESIGNATED AS "GROUND" ARE REQUIRED WHEN
SUPPORTING HIGH SPEED DIFFERENTIAL SIGNALS.
THESE LOCATIONS MAY ALSO BE USED FOR SIDEBAND
SIGNALS OR OTHER UTILITY PUPOSES.
- ⑦ CONTROLLED ACROSS PADS.
- ⑧ THIS LAYOUT IS ADOPTED IN SFF-TA-1002 Rev 1.1
- ⑨ SCREW IS ENCLOSED BY SEPARATE PACKING.
SCREW SIZE: M2
SCREW LENGTH(REF): 6
HEAD SIZE(REF): $\phi 3.5$, 1.3HEIGHT
- ⑩ DATE CODE MARKING.



PLATING	④ DIM A	③ DIM B (HOST BOARD THICKNESS)	PARTS No.
0.76 μ m Au	0	1.57 ± 0.15	2340326-1

AS SHOWN : -1

QTY	NAME	ITEM No.
2	M2 SCREW	
2	M2 NUT PLATE	⑤
2	COVER HOUSING 28P	④
2	COVER HOUSING 14P	③
1	HOUSING	②
84	CONTACT	①

HVM DESIGN

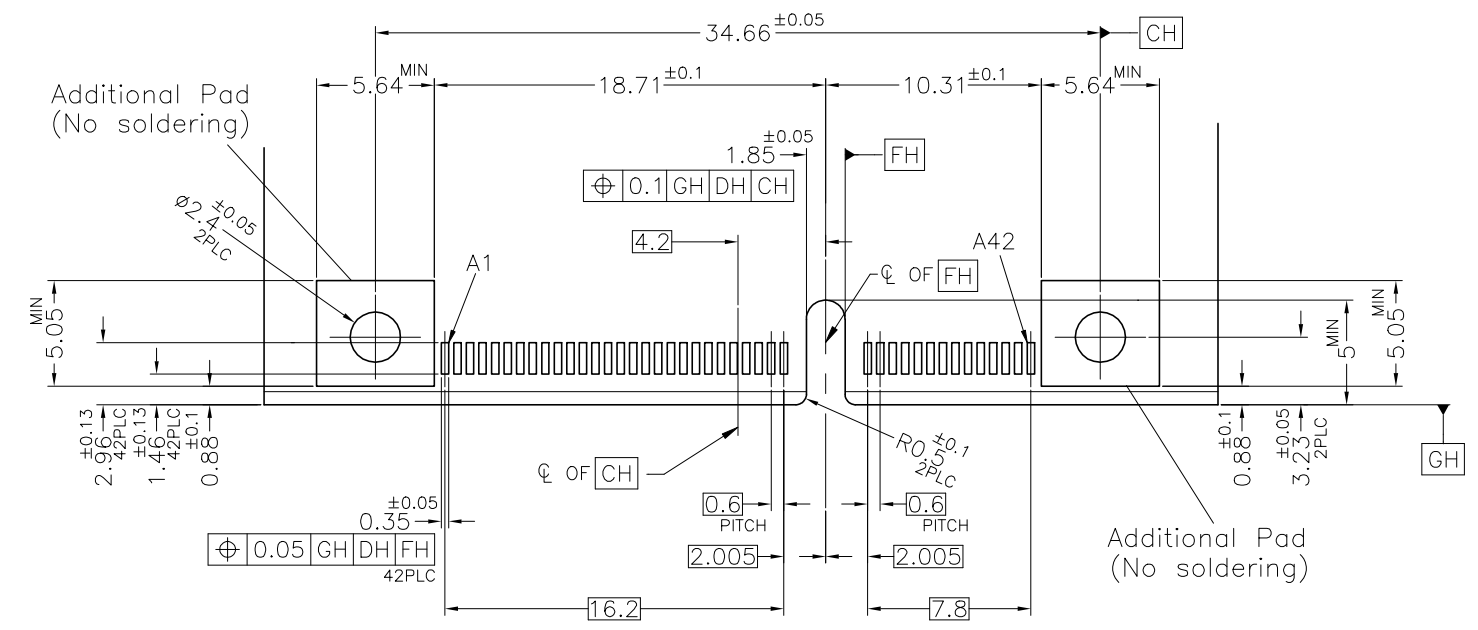
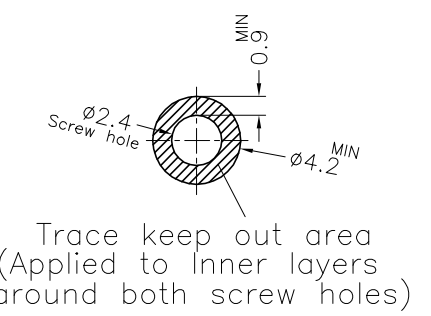
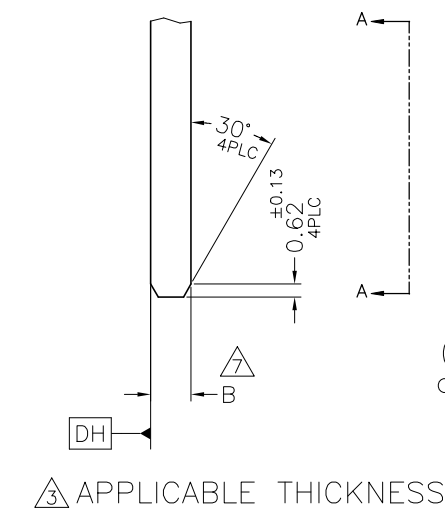
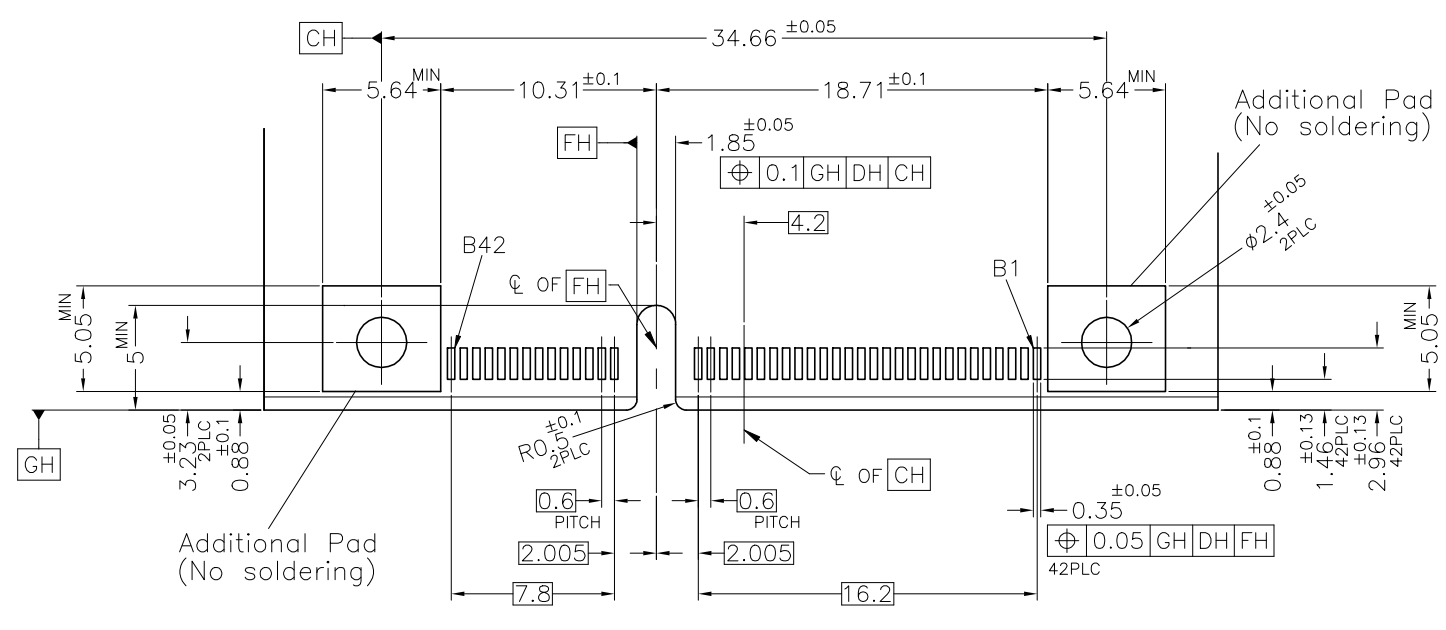
PROPOSAL DRAWING
 THIS PRINT IS
PRELIMINARY
 UNQUALIFIED PRODUCT
 THESE SPEC MAY BE CHANGED BASED ON
 ADDITIONAL INVESTIGATION AND TESTING
 WITHOUT YOUR PERMISSION.

THIS DRAWING IS A CONTROLLED DOCUMENT.		DWN M.TANAKA 30JUL2018	STE TE Connectivity													
DIMENSIONS: mm		CHK J.TSUJI 30JUL2018														
TOLERANCES UNLESS OTHERWISE SPECIFIED: ± 0.3		APVD K.KOBAYASHI 30JUL2018	NAME 84 POSITION SLIVER 2.0 STRADDLE MOUNT													
<table border="1"> <tr><td>0-PLC</td><td>\pm</td></tr> <tr><td>1-PLC</td><td>\pm</td></tr> <tr><td>2-PLC</td><td>\pm</td></tr> <tr><td>3-PLC</td><td>\pm</td></tr> <tr><td>4-PLC</td><td>\pm</td></tr> <tr><td>ANGLES</td><td>\pm</td></tr> </table>		0-PLC	\pm	1-PLC	\pm	2-PLC	\pm	3-PLC	\pm	4-PLC	\pm	ANGLES	\pm	APPLICATION SPEC -	SIZE A2	CAGE CODE 00779
0-PLC	\pm															
1-PLC	\pm															
2-PLC	\pm															
3-PLC	\pm															
4-PLC	\pm															
ANGLES	\pm															
MATERIAL ①	FINISH ②	WEIGHT 0	DRAWING NO C-2340326	RESTRICTED TO												
CUSTOMER DRAWING			SCALE 4:1	SHEET 1 of 4												
			REV 8													

PRELIMINARY

2340326

REVISIONS					
P	LTR	DESCRIPTION	DATE	DWN	APVD
-	-	SEE SHEET 1	-	-	-

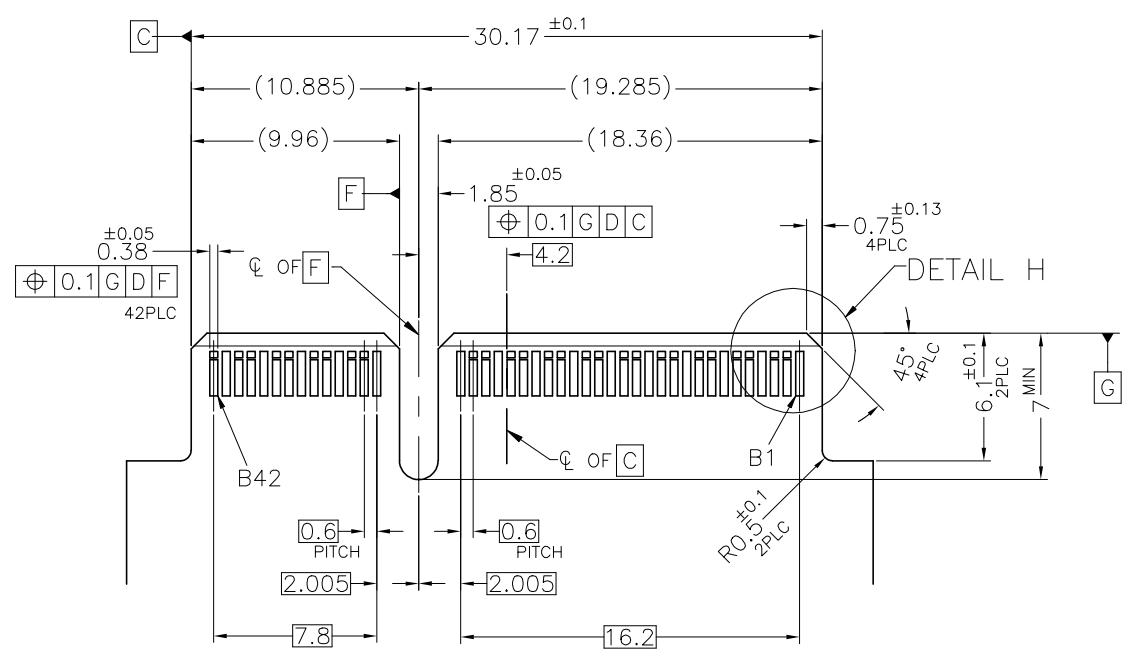


PROPOSAL DRAWING

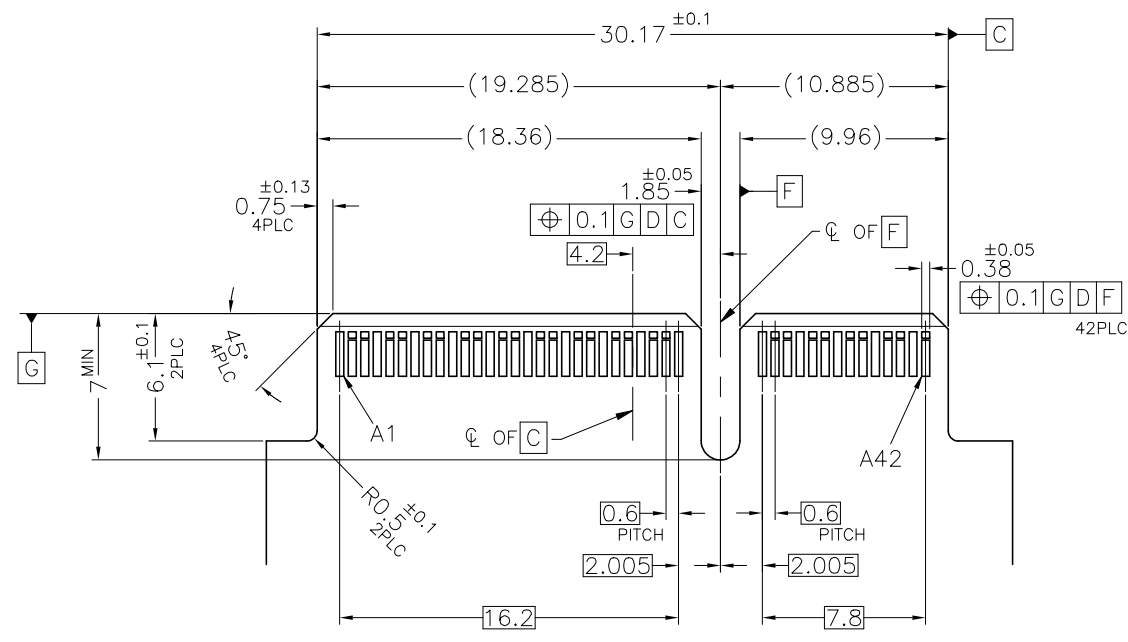
THIS PRINT IS PRELIMINARY UNQUALIFIED PRODUCT THESE SPEC MAY BE CHANGED BASED ON ADDITIONAL INVESTIGATION AND TESTING WITHOUT YOUR PERMISSION.

THIS DRAWING IS A CONTROLLED DOCUMENT.		DWN	STE TE Connectivity			
DIMENSIONS: mm		CHK				
	TOLERANCES UNLESS OTHERWISE SPECIFIED: ±0.3 0-PLC ± 1-PLC ± 2-PLC ± 3-PLC ± 4-PLC ±	APVD	NAME			
		PRODUCT SPEC		84 POSITION SLIVER 2.0 STRADDLE MOUNT		
		APPLICATION SPEC		SIZE	CAGE CODE	DRAWING NO
		MATERIAL		WEIGHT	A2	00779
FINISH		CUSTOMER DRAWING		RESTRICTED TO		
		SCALE	4:1	SHEET	2 of 4	
				REV	8	

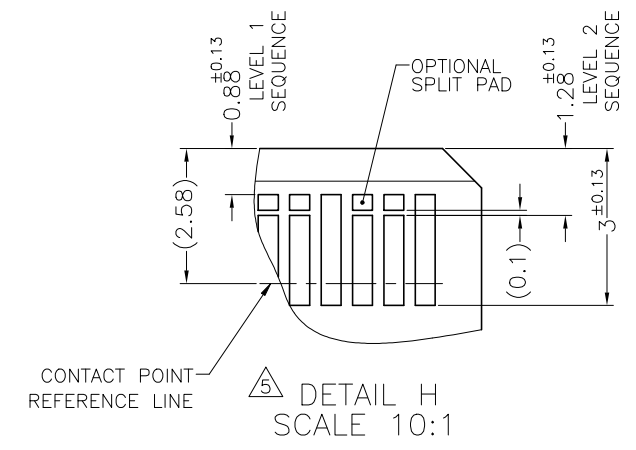
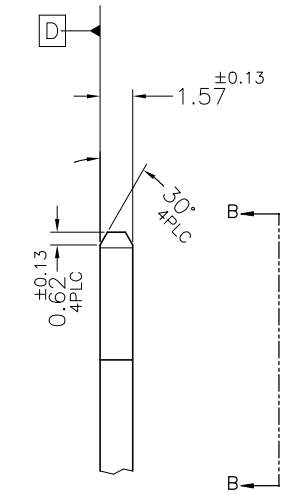
REVISIONS				
P	LTR	DESCRIPTION	DATE	APVD
-	-	SEE SHEET 1	-	-



REFERENCE AIC BOARD LAYOUT



VIEW B-B



PROPOSAL DRAWING
 THIS PRINT IS
PRELIMINARY
 UNQUALIFIED PRODUCT
 THESE SPEC MAY BE CHANGED BASED ON
 ADDITIONAL INVESTIGATION AND TESTING
 WITHOUT YOUR PERMISSION.

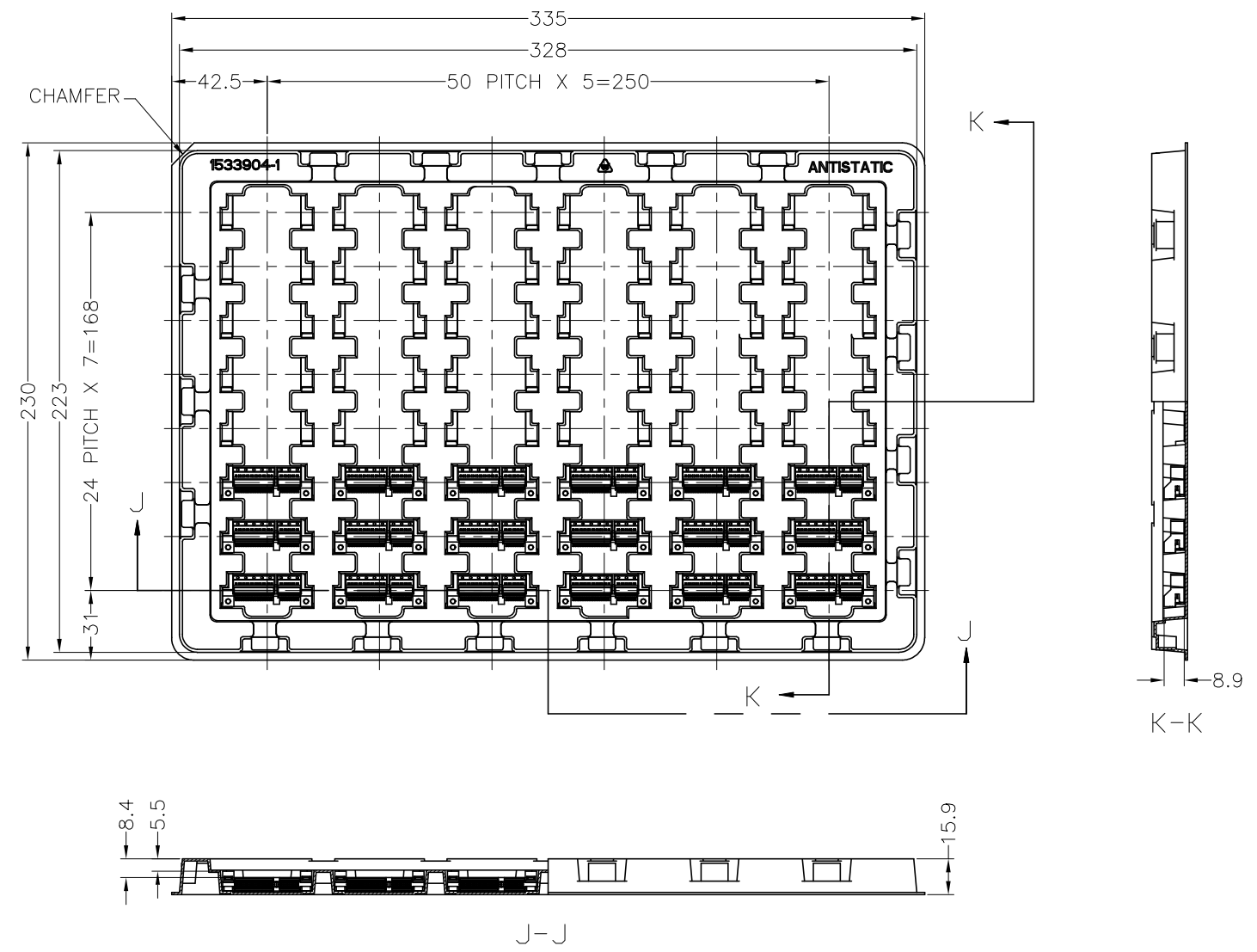
THIS DRAWING IS A CONTROLLED DOCUMENT.		DWN	TE Connectivity	
DIMENSIONS: mm		CHK	NAME	
TOLERANCES UNLESS OTHERWISE SPECIFIED: ±0.3		APVD	84 POSITION SLIVER 2.0 STRADDLE MOUNT	
0-PLC ±		PRODUCT SPEC	SIZE	CAGE CODE
1-PLC ±		APPLICATION SPEC	A2	00779
2-PLC ±		WEIGHT	DRAWING NO C=2340326	
3-PLC ±		CUSTOMER DRAWING	SCALE	SHEET
4-PLC ±			4:1	3 of 4
ANGLES				REV 8
FINISH				

REVISIONS					
P	LTR	DESCRIPTION	DATE	DWN	APVD
-	-	SEE SHEET 1	-	-	-

CONNECTOR CONTACT IDENTIFICATION  

CONTACT NUMBER	SIDE A	SIDE B
1	GROUND	GROUND
2	SIGNAL	SIGNAL
3	SIGNAL	SIGNAL
4	GROUND	GROUND
5	SIGNAL	SIGNAL
6	SIGNAL	SIGNAL
7	GROUND	GROUND
8	SIGNAL	SIGNAL
9	SIGNAL	SIGNAL
10	GROUND	GROUND
11	SIGNAL	SIGNAL
12	SIGNAL	SIGNAL
13	GROUND	GROUND
14	SIGNAL	SIGNAL
15	SIGNAL	SIGNAL
16	GROUND	GROUND
17	SIGNAL	SIGNAL
18	SIGNAL	SIGNAL
19	GROUND	GROUND
20	SIGNAL	SIGNAL
21	SIGNAL	SIGNAL
22	GROUND	GROUND
23	SIGNAL	SIGNAL
24	SIGNAL	SIGNAL
25	GROUND	GROUND
26	SIGNAL	SIGNAL
27	SIGNAL	SIGNAL
28	GROUND	GROUND

CONTACT NUMBER	SIDE A	SIDE B
29	GROUND	GROUND
30	SIGNAL	SIGNAL
31	SIGNAL	SIGNAL
32	GROUND	GROUND
33	SIGNAL	SIGNAL
34	SIGNAL	SIGNAL
35	GROUND	GROUND
36	SIGNAL	SIGNAL
37	SIGNAL	SIGNAL
38	GROUND	GROUND
39	SIGNAL	SIGNAL
40	SIGNAL	SIGNAL
41	GROUND	GROUND
42	GROUND	GROUND



SOFT TRAY PACKAGING: 2340326-1

1. MATERIAL: HIPS, COLOR: NATURAL
2. QTY. : 8 X 6 = 48 POCKETS PER TRAY
3. TOLERANCES ON TRAY DIMENSIONS ARE REFERENCE

PROPOSAL DRAWING
 THIS PRINT IS PRELIMINARY
 UNQUALIFIED PRODUCT
 THESE SPEC MAY BE CHANGED BASED ON
 ADDITIONAL INVESTIGATION AND TESTING
 WITHOUT YOUR PERMISSION.

THIS DRAWING IS A CONTROLLED DOCUMENT.		DWN	TE Connectivity	
DIMENSIONS: mm		CHK	84 POSITION SLIVER 2.0 STRADDLE MOUNT	
TOLERANCES UNLESS OTHERWISE SPECIFIED:		APVD	NAME	
0 PLC ± -		PRODUCT SPEC	SIZE CAGE CODE DRAWING NO	
1 PLC ± -		APPLICATION SPEC	A2 00779 C-2340326	
2 PLC ± -		WEIGHT	RESTRICTED TO	
3 PLC ± -		CUSTOMER DRAWING	SCALE N.T.S SHEET 4 of 4 REV 8	
4 PLC ± -				
ANGLES ± -				
FINISH				



Компания «ЭлектроПласт» предлагает заключение долгосрочных отношений при поставках импортных электронных компонентов на взаимовыгодных условиях!

Наши преимущества:

- Оперативные поставки широкого спектра электронных компонентов отечественного и импортного производства напрямую от производителей и с крупнейших мировых складов;
- Поставка более 17-ти миллионов наименований электронных компонентов;
- Поставка сложных, дефицитных, либо снятых с производства позиций;
- Оперативные сроки поставки под заказ (от 5 рабочих дней);
- Экспресс доставка в любую точку России;
- Техническая поддержка проекта, помощь в подборе аналогов, поставка прототипов;
- Система менеджмента качества сертифицирована по Международному стандарту ISO 9001;
- Лицензия ФСБ на осуществление работ с использованием сведений, составляющих государственную тайну;
- Поставка специализированных компонентов (Xilinx, Altera, Analog Devices, Intersil, Interpoint, Microsemi, Aeroflex, Peregrine, Syfer, Eurofarad, Texas Instrument, Miteq, Cobham, E2V, MA-COM, Hittite, Mini-Circuits, General Dynamics и др.);

Помимо этого, одним из направлений компании «ЭлектроПласт» является направление «Источники питания». Мы предлагаем Вам помощь Конструкторского отдела:

- Подбор оптимального решения, техническое обоснование при выборе компонента;
- Подбор аналогов;
- Консультации по применению компонента;
- Поставка образцов и прототипов;
- Техническая поддержка проекта;
- Защита от снятия компонента с производства.



Как с нами связаться

Телефон: 8 (812) 309 58 32 (многоканальный)

Факс: 8 (812) 320-02-42

Электронная почта: org@eplast1.ru

Адрес: 198099, г. Санкт-Петербург, ул. Калинина, дом 2, корпус 4, литера А.