

Surge protection device - DT-UFB-485/BS - 2920612

Please be informed that the data shown in this PDF Document is generated from our Online Catalog. Please find the complete data in the user's documentation. Our General Terms of Use for Downloads are valid (<http://download.phoenixcontact.com>)



9-pos. D-SUB attachment plug with surge protection for RS-485 interfaces. Can alternatively be snapped onto DIN rails.

Why buy this product

- Adapter type
- 9-pos. D-SUB connection
- DIN rail mounting possible by removing the cap



Key commercial data

Packing unit	0
Minimum order quantity	1
Catalog page	Page 147 (TT-2011)
GTIN	 4 046356 155120
Custom tariff number	85363010
Country of origin	GERMANY

Technical data

General

Housing material	Zinc die-cast
Color	silver/black
Standards for air and creepage distances	IEC 60664-1
Standards for air and creepage distances	VDE 0110-1
Total surge current (8/20) μ s	10 kA
Ambient temperature (operation)	-40 °C ... 85 °C
Mounting type	Connection-specific attachment plug and DIN rail, 35 mm
Design	Attachment plug for DIN rail mounting
Number of positions	5
Degree of protection	IP20
Direction of action	Line-Line & Line-Ground/Shield
Width	25 mm
Height	110 mm

Surge protection device - DT-UFB-485/BS - 2920612

Technical data

General

Depth	63 mm
-------	-------

Protective circuit

IEC category	B2
IEC category	C1
IEC category	C2
IEC category	C3
IEC category	D1
VDE requirement class	B2
VDE requirement class	C1
VDE requirement class	C2
VDE requirement class	C3
VDE requirement class	D1
Maximum continuous operating voltage UC	12 V DC
Maximum continuous voltage UC (wire-wire)	12 V DC
Maximum continuous voltage UC (wire-ground)	90 V DC
Nominal current I _N	≤ 380 mA (25°C)
Operating effective current I _C at UC	≤ 1 μA
Ground conductor current I _{PE}	≤ 5 μA
Nominal discharge surge current I _n (8/20) μs (Core-Core)	≤ 5 kA
Nominal discharge surge current I _n (8/20) μs (Core-Earth)	≤ 5 kA
Total surge current (8/20) μs	10 kA
Output voltage limitation at 1 kV/μs (Core-Earth) spike	≤ 700 V
Output voltage limitation at 1 kV/μs (Core-Core) static	≤ 25 V
Output voltage limitation at 1 kV/μs (Core-Earth) static	≤ 700 V
Output voltage limitation at 1 kV/μs (Core-GND) static	≤ 25 V
Residual voltage at I _n , (conductor-conductor)	≤ 25 V
Residual voltage at I _n , (conductor-ground)	≤ 55 V
Residual voltage at I _n , (conductor-GND)	≤ 25 V
Protection level UP (Core-Core)	≤ 30 V (B2 - 100 A)
Protection level UP (Core-Core)	≤ 30 V (C1 - 500 A)
Protection level UP (Core-Core)	≤ 40 V (C2 - 5 kA)
Protection level UP (Core-Earth)	≤ 700 V (B2 - 100 A)
Protection level UP (Core-Earth)	≤ 700 V (C1 - 500 A)
Protection level UP (Core-Earth)	≤ 750 V (C2 - 5 kA)
Response time t _A (Core-Core)	≤ 100 ns
Response time t _A (Core-Earth)	≤ 100 ns
Input attenuation a _E , sym.	Typ. 0.3 dB (≤ 30 MHz)
Input attenuation a _E , sym.	Typ. 0.3 dB (≤ 7 MHz / 150 Ω)
Input attenuation a _E , sym.	Typ. 0.3 dB (≤ 2 MHz / 600 Ω)
Cut-off frequency f _g (3 dB), sym. in 100 Ohm system	Typ. 50 MHz
Resistance in series	3.3 Ω 10 %
Surge carrying capacity in acc. with IEC 61643-21 (Core-Core)	C1 (1 kV / 500 A)

Surge protection device - DT-UFB-485/BS - 2920612

Technical data

Protective circuit

Surge carrying capacity in acc. with IEC 61643-21 (Core-Core)	C2 (10 kV/5 kA)
Surge carrying capacity in acc. with IEC 61643-21 (Core-Core)	B2 (4 kV / 100 A)
Surge carrying capacity in acc. with IEC 61643-21 (Core-Earth)	B2 (4 kV / 100 A)
Surge carrying capacity in acc. with IEC 61643-21 (Core-Earth)	C1 (1 kV / 500 A)
Surge carrying capacity in acc. with IEC 61643-21 (Core-Earth)	C2 (10 kV/5 kA)
Surge carrying capacity in acc. with IEC 61643-21 (Core-Earth)	D1 (1 kA)

Connection data

Connection method	D-SUB-9
Connection type IN	D-SUB-9 socket
Connection type OUT	D-SUB-9 connector

Connection, equipotential bonding

Connection method	Cable connection
-------------------	------------------

Connection, protective circuit

Standards/regulations	IEC 61643-21
Standards/regulations	DIN EN 61643-21

Classifications

eclass

eCl@ss 4.0	27140201
eCl@ss 4.1	27130801
eCl@ss 5.0	27130801
eCl@ss 5.1	27130801
eCl@ss 6.0	27130807
eCl@ss 7.0	27130807

etim

ETIM 2.0	EC000943
ETIM 3.0	EC000943
ETIM 4.0	EC000943

unspsc

UNSPSC 6.01	30212010
UNSPSC 7.0901	39121610
UNSPSC 11	39121610
UNSPSC 12.01	39121610
UNSPSC 13.2	39121620

Approvals

Approvals

Surge protection device - DT-UFB-485/BS - 2920612

Approvals

Approvals

GOST / GOST

Ex Approvals

Approvals submitted

Approval details



Accessories

Accessories

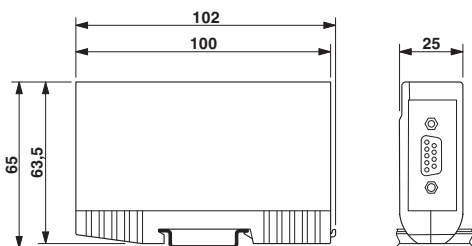
D-SUB cable - VS-09-DSUB-20-LI-1,0 - 1656233



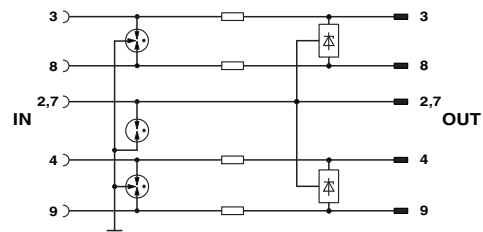
Assembled D-SUB cable shielded, 9-pos., stranded (7-wire), cable color RAL 7000 (gray), IP20 degree of protection, head 1 with socket shell 1 and straight cable outlet, head 2 with pin shell 1 and straight cable outlet, length: 1 m

Drawings

Dimensioned drawing



Circuit diagram





© Phoenix Contact 2012 - all rights reserved
<http://www.phoenixcontact.com>



Компания «ЭлектроПласт» предлагает заключение долгосрочных отношений при поставках импортных электронных компонентов на взаимовыгодных условиях!

Наши преимущества:

- Оперативные поставки широкого спектра электронных компонентов отечественного и импортного производства напрямую от производителей и с крупнейших мировых складов;
- Поставка более 17-ти миллионов наименований электронных компонентов;
- Поставка сложных, дефицитных, либо снятых с производства позиций;
- Оперативные сроки поставки под заказ (от 5 рабочих дней);
- Экспресс доставка в любую точку России;
- Техническая поддержка проекта, помощь в подборе аналогов, поставка прототипов;
- Система менеджмента качества сертифицирована по Международному стандарту ISO 9001;
- Лицензия ФСБ на осуществление работ с использованием сведений, составляющих государственную тайну;
- Поставка специализированных компонентов (Xilinx, Altera, Analog Devices, Intersil, Interpoint, Microsemi, Aeroflex, Peregrine, Syfer, Eurofarad, Texas Instrument, Miteq, Cobham, E2V, MA-COM, Hittite, Mini-Circuits, General Dynamics и др.);

Помимо этого, одним из направлений компании «ЭлектроПласт» является направление «Источники питания». Мы предлагаем Вам помощь Конструкторского отдела:

- Подбор оптимального решения, техническое обоснование при выборе компонента;
- Подбор аналогов;
- Консультации по применению компонента;
- Поставка образцов и прототипов;
- Техническая поддержка проекта;
- Защита от снятия компонента с производства.



Как с нами связаться

Телефон: 8 (812) 309 58 32 (многоканальный)

Факс: 8 (812) 320-02-42

Электронная почта: org@eplast1.ru

Адрес: 198099, г. Санкт-Петербург, ул. Калинина, дом 2, корпус 4, литера А.