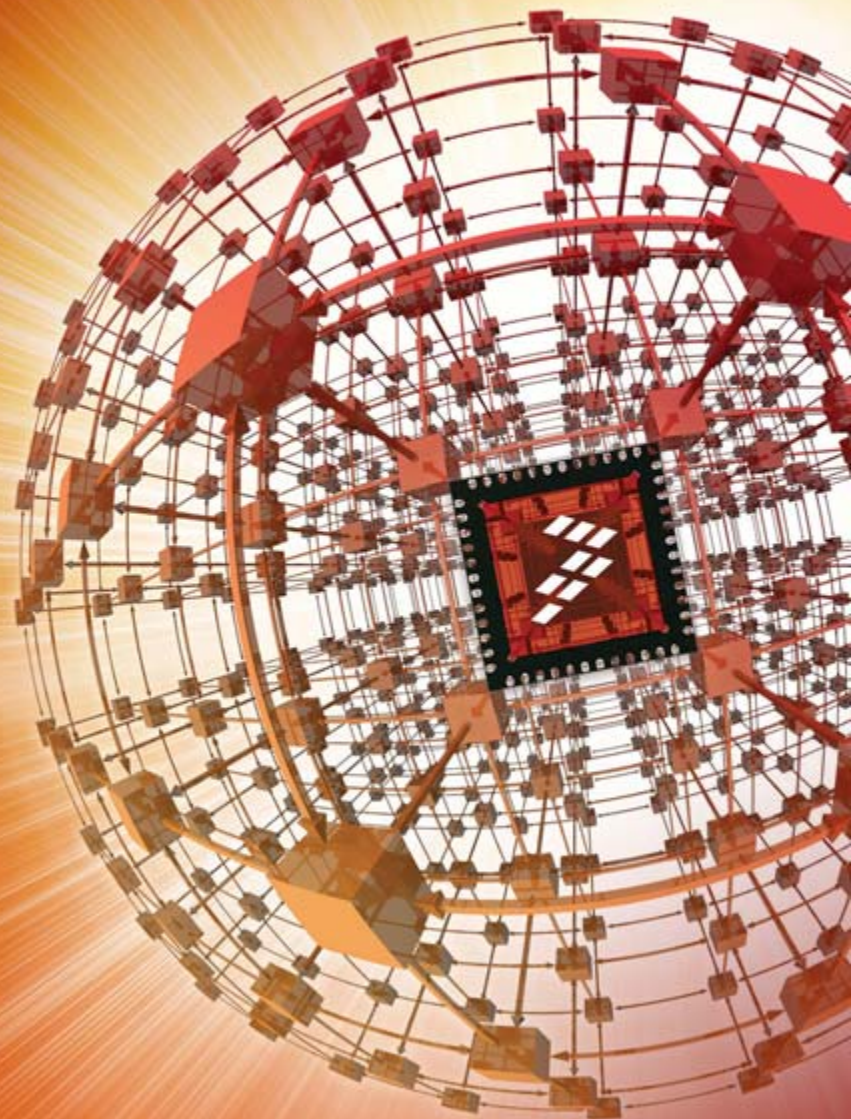




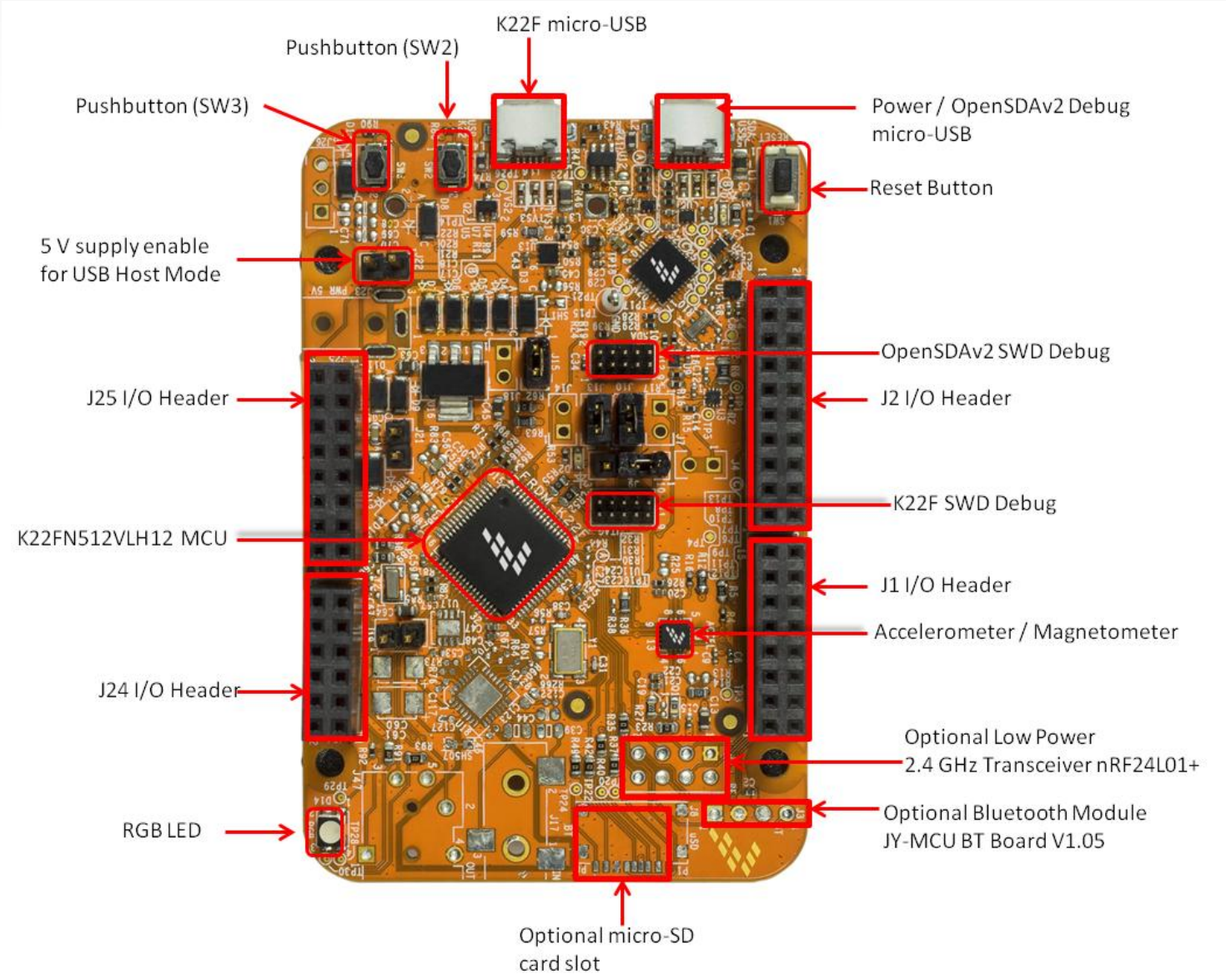
Quick Start Guide for the Freescale Freedom Development Platform FRDM-K22F

Contents:

- Get to Know the FRDM-K22F
- Getting Started Out of the Box
- Introduction to OpenSDAv2.1
- Explore Further



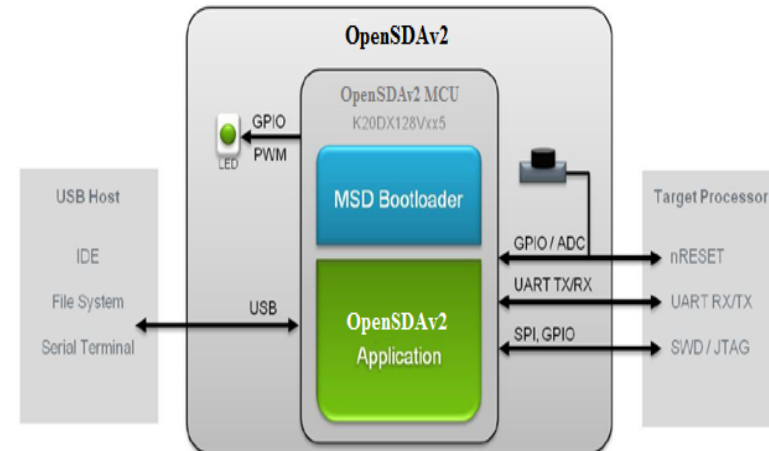
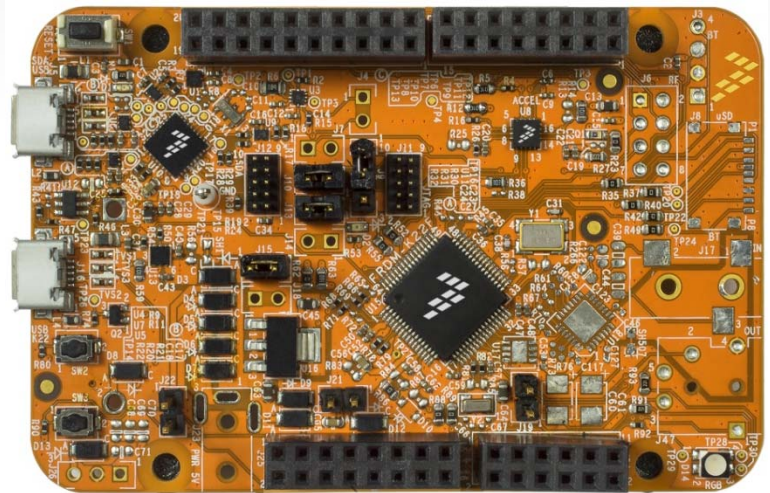
freescale.com/FRDM-K22F



The Freescale Freedom development platform is a set of software and hardware tools for evaluation and development. It is ideal for rapid prototyping of microcontroller-based applications. The FRDM-K22F development platform is a simple, yet sophisticated design featuring a Kinetis K series MCU built on the ARM® Cortex®-M4 core with a floating point unit and USB connectivity with crystal-less operation.

Features:

- MK22FN512VLH12 MCU – 120 MHz, 512 KB Flash, 128 KB SRAM, FPU, DSP, crystal-less USB (USB device), 64 LQFP
- FXOS8700CQ accelerometer and magnetometer
- RGB LED
- Flexible power supply options – USB, external source
- Easy access to MCU I/O
- Optional add-on modules: microSD card (over SPI), RF24L01+ (RF) and JY-MCU (Bluetooth)
- Form factor compatible with Arduino™ R3 pin layout
- OpenSDAv2.1 serial and debug interface
 - Open-source hardware design
 - Open-source bootloader and firmware
 - Virtual Serial port interface
 - Mass storage device (MSD) flash programming interface – no tool installation required to evaluate demo apps
 - CMSIS-DAP interface: new ARM standard for embedded debug interface



Getting Started Out of the Box

Installing Drivers and Running the Out of Box Demo

1

Download and install the mbed OpenSDAv2.1 USB drivers found at <http://mbed.org/handbook/Windows-serial-configuration>.

2

Plug in a USB cable (not included) from a USB host to the OpenSDAv2.1 Micro-AB USB connector (J5). The FRDM-K22F will be powered by this USB connection.

FRDM-K22F comes with the mass-storage device (MSD) Flash Programmer OpenSDAv2.1 Application preinstalled. It will appear as a removable storage drive with a volume label of `MBED`. For more information, see page 8.

The MSD Flash Programmer also includes a USB virtual serial port which requires an `.INF` file for proper installation in Windows. The necessary `.INF` file is available in the mbed OpenSDAv2 .1 USB drivers (Step 1).

3

Determine the symbolic name assigned to the FRDM-K22F virtual serial port. To do this in Windows, open Device Manager and look for the COM port named “mbed Serial Port.”

4

Open the serial terminal emulation program of your choice. Examples for Windows include [Tera Term](#), [PuTTY](#), and [HyperTerminal](#).

5

Configure the terminal program. Most embedded examples use 8 data bits, no parity bits, and one stop bit (8-N-1). Set the baud rate to 115200 and open the port. Press the any key or the SW3 pushbutton on the board to display the following message:

Select from the following menu:

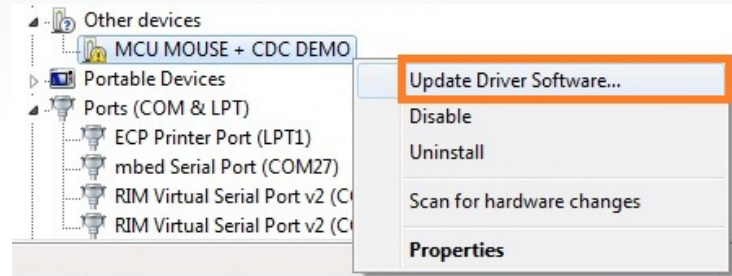
1. **Bubble level** – Single axis level using the red and green LEDs to indicate when the board is unlevel.
2. **eCompass demo** – Compass using the combined magnetometer and accelerometer to indicate the heading of board in reference to magnetic north.
3. **USB CDC demo** – Second serial terminal. (For additional details on the driver installation, refer to the instructions on the next page.)
4. **Metal Detector demo** – Metal detector demo that indicates the direction and distance to a foreign metal object using the variable LED brightness as the indicator.
5. **Stopwatch demo** – Uses the real-time counter (RTC) to implement a stopwatch with 1/100th of a second precision.
6. **Air mouse demo** – USB mouse using the accelerometer to determine where/how to move the cursor

Enter a number key (1–6) on the keyboard to run each option from the Quick Start Demo. Further information will be displayed on the terminal as the demo runs.

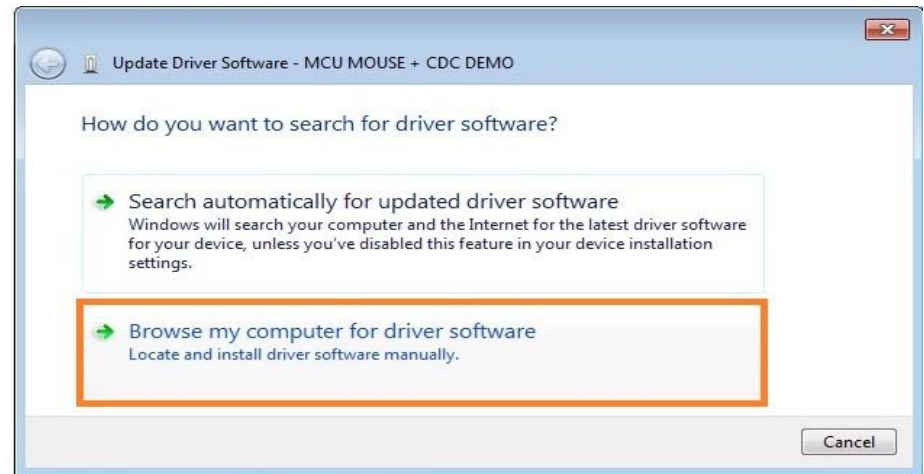
How to install CDC driver for USB CDC demo

Below are the steps to install the CDC driver on Windows 7, while on Windows XP the similar will apply.

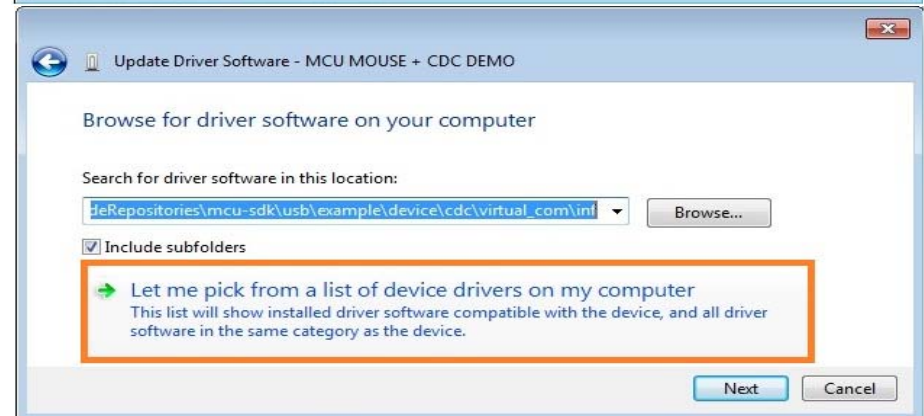
1 Under the Device Manager, click “Update Driver Software...”



2 On the Update Driver Software window, choose “Browse my computer for driver software”

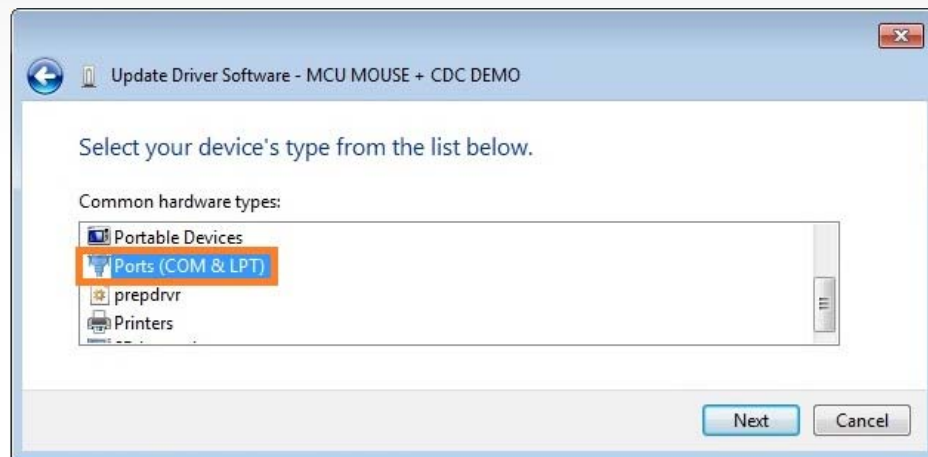


3 Choose “Let me pick from a list of device drivers on my computer”

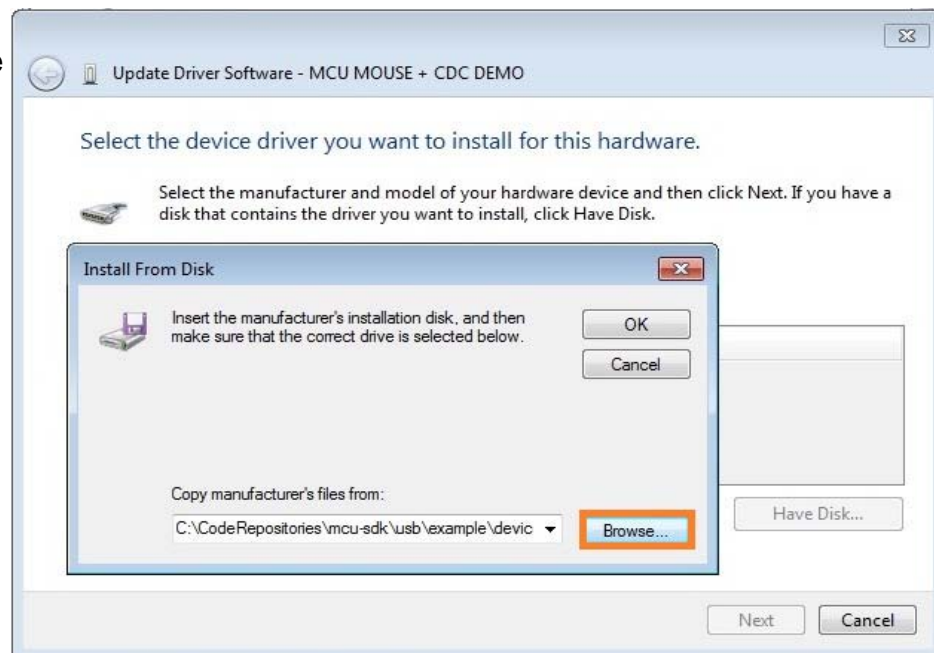


How to install CDC driver for USB CDC demo cont'd

4 Select "Ports (COM & LPT)" as the device's type and click "Next"



5 Extract the CDC driver from the Quick Start Package to your computer and click on "Have Disk...", then navigate to its location by clicking on "Browse...":
`<install_dir>\fsl_ucwxp.inf`



How to install CDC driver for USB CDC demo cont'd

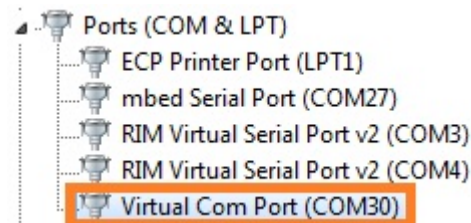
6 Click on the "Next" button



7 When prompted, select "Yes"



8 Now, the CDC driver will have installed successfully and will be listed in the Device Manager under Ports (COM & LPT)



Introduction to OpenSDAv2.1

The MSD Flash Programmer is a composite USB application that provides a virtual serial port and an easy and convenient way to program applications into the K22F MCU. It emulates a FAT file system, appearing as a removable drive in the host file system with a volume label of `MBED`. Raw binary or Motorola S-record files that are copied to the drive are programmed directly into the flash of the K22F and executed automatically. The virtual serial port enumerates as a standard serial port device that can be opened with standard serial terminal applications.

Using the Virtual Serial Port

- 1 Determine the symbolic name assigned to the FRDM-K22F virtual serial port. To do this in Windows, open Device Manager and look for the COM port named “mbed Serial Port”.
- 2 Open the serial terminal emulation program of your choice. Examples for Windows include [Tera Term](#), [PuTTY](#), and [HyperTerminal](#).
- 3 Configure the terminal program. Most embedded examples use 8 data bits, no parity bits, and one stop bit (8-N-1). Set the baud rate to 115200 and open the port.
- 4 Press and release the Reset button (SW1) at anytime to restart the example application. Resetting the embedded application will not affect the connection of the virtual serial port to the terminal program.

NOTE: Flash programming with the MSD Flash Programmer is currently only supported on Windows operating systems. However, the virtual serial port has been successfully tested on Windows, Linux and Mac operating systems.

USB Debug Support for default Kinetis SDK projects

The FRDM-K22F has the OpenSDA v2.1, which requires OpenSDA applications to be built with a start address of 0x8000.

Thus, for the FRDM-K22F platform, the OpenSDA v2.1 J-Link firmware will be needed. This version of the firmware can be found on the OpenSDA support site, <https://segger.com/opensda.html>, located in the Jlink OpenSDA V2.1 zip file. This version of the J-Link application is built with a start address of 0x8000. This version must be used in place of the version documented in the 'Kinetis SDK K22 User's Guide' document.

Below are the steps for changing your OpenSDA firmware on your hardware.

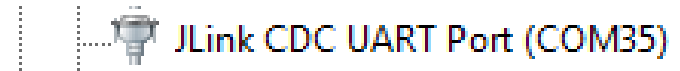
Enter Bootloader Mode

- 1 Unplug the USB cable if attached.
- 2 Press and hold the Reset button (SW1).
- 3 Plug in a USB cable (not included) between a USB host and the OpenSDAv2.1 USB connector (labeled "SDA").
- 4 Release the Reset button.

A removable drive should now be visible in the host file system with a volume label of `BOOTLOADER`. You are now in OpenSDAv2.1 Bootloader mode.

How to load J-Link Application

- 1 Locate the `Jlink_OpenSDA_V2_1.zip` file on your computer and extract to your desired folder location.
- 2 Copy & paste or drag & drop the MSD Flash Programmer Application `Jlink_OpenSDA_V2_1.bin` to the `BOOTLOADER` drive.
- 3 Unplug the USB cable and plug it in again. The new OpenSDAv2.1 Application should now be running and a **Serial Port** should be visible via the Device manager, as shown below.





Now that you are familiar with the FRDM-K22F and OpenSDAv2.1, it's time to explore additional information including details regarding the SDK-enabled Out-of-Box Demo and resources such as design files and schematics located at [freescale.com/FRDM-K22F](https://www.freescale.com/FRDM-K22F).

Leverage the Kinetis SDK and other online enablement software and tools for Kinetis MCUs, available for download at the following links:

- Kinetis software development kit (SDK): [freescale.com/ksdk](https://www.freescale.com/ksdk)
- IAR Embedded Workbench: www.iar.com/freescale/migrate
- ARM Keil Microcontroller Development Kit: www2.keil.com/freescale
- MQX™ RTOS: [freescale.com/mqx](https://www.freescale.com/mqx)
- Kinetis Design Studio IDE: [freescale.com/kds](https://www.freescale.com/kds)
 - Please refer to the KDS release notes for latest information on FRDM-K22F support
- Bootloader for Kinetis MCUs: [freescale.com/kboot](https://www.freescale.com/kboot)



How to Reach Us:

Home Page:
freescale.com

Web Support:
freescale.com/support

Information in this document is provided solely to enable system and software implementers to use Freescale products. There are no express or implied copyright licenses granted hereunder to design or fabricate any integrated circuits or integrated circuits based on the information in this document.

Freescale reserves the right to make changes without further notice to any products herein. Freescale makes no warranty, representation or guarantee regarding the suitability of its products for any particular purpose, nor does Freescale assume any liability arising out of the application or use of any product or circuit, and specifically disclaims any and all liability, including without limitation consequential or incidental damages. “Typical” parameters that may be provided in Freescale data sheets and/or specifications can and do vary in different applications and actual performance may vary over time. All operating parameters, including “Typicals”, must be validated for each customer application by customer’s technical experts. Freescale does not convey any license under its patent rights nor the rights of others. Freescale sells products pursuant to standard terms and conditions of sale, which can be found at the following address: <http://www.reg.net/v2/webservices/Freescale/Docs/TermsandConditions.htm>

Freescale, the Freescale logo, Altivec, C-5, CodeTest, CodeWarrior, ColdFire, C_Ware, Energy Efficient Solutions logo, Kinetis, mobileGT, PowerQUICC, Processor Expert, QorIQ, Qorriva, StarCore, Symphony, and VortiQa are trademarks of Freescale Semiconductor, Inc., Reg. U.S. Pat. & Tm. Off. Airfast, BeeKit, BeeStack, ColdFire+, CoreNet, Flexis, MadniV, MXC, Platform in a Package, QorIQ Qonverge, QUICC Engine, Ready Play, SafeAssure, SMARTMOS, TurboLink, Vybrid, and Xtrinsic are trademarks of Freescale Semiconductor, Inc. All other product or service names are the property of their respective owners.

© Freescale Semiconductor, Inc. 2014.
All rights reserved.



Компания «ЭлектроПласт» предлагает заключение долгосрочных отношений при поставках импортных электронных компонентов на взаимовыгодных условиях!

Наши преимущества:

- Оперативные поставки широкого спектра электронных компонентов отечественного и импортного производства напрямую от производителей и с крупнейших мировых складов;
- Поставка более 17-ти миллионов наименований электронных компонентов;
- Поставка сложных, дефицитных, либо снятых с производства позиций;
- Оперативные сроки поставки под заказ (от 5 рабочих дней);
- Экспресс доставка в любую точку России;
- Техническая поддержка проекта, помощь в подборе аналогов, поставка прототипов;
- Система менеджмента качества сертифицирована по Международному стандарту ISO 9001;
- Лицензия ФСБ на осуществление работ с использованием сведений, составляющих государственную тайну;
- Поставка специализированных компонентов (Xilinx, Altera, Analog Devices, Intersil, Interpoint, Microsemi, Aeroflex, Peregrine, Syfer, Eurofarad, Texas Instrument, Miteq, Cobham, E2V, MA-COM, Hittite, Mini-Circuits, General Dynamics и др.);

Помимо этого, одним из направлений компании «ЭлектроПласт» является направление «Источники питания». Мы предлагаем Вам помощь Конструкторского отдела:

- Подбор оптимального решения, техническое обоснование при выборе компонента;
- Подбор аналогов;
- Консультации по применению компонента;
- Поставка образцов и прототипов;
- Техническая поддержка проекта;
- Защита от снятия компонента с производства.



Как с нами связаться

Телефон: 8 (812) 309 58 32 (многоканальный)

Факс: 8 (812) 320-02-42

Электронная почта: org@eplast1.ru

Адрес: 198099, г. Санкт-Петербург, ул. Калинина, дом 2, корпус 4, литера А.