

THIS DRAWING IS UNPUBLISHED.

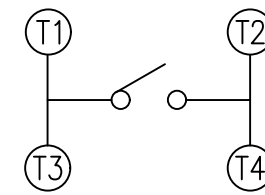
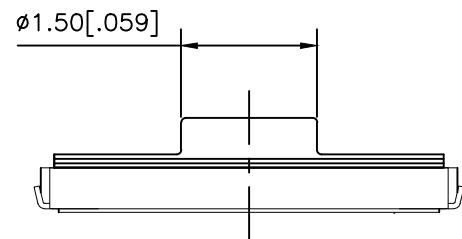
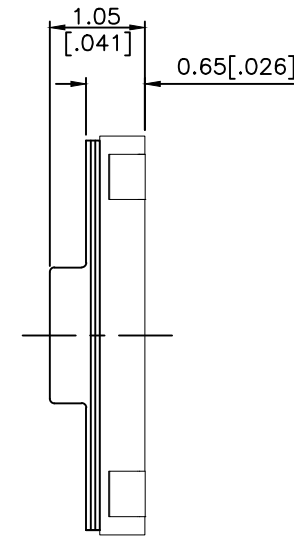
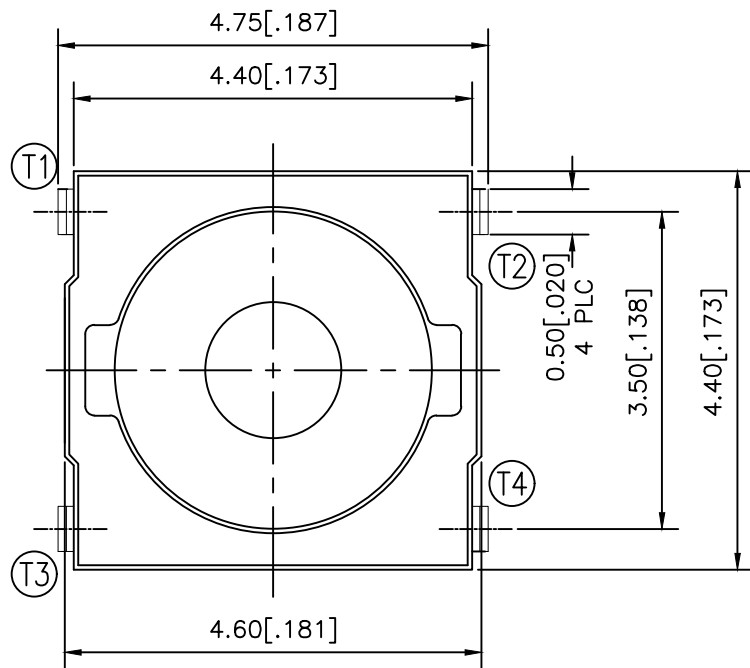
RELEASED FOR PUBLICATION

© COPYRIGHT - TE Connectivity Ltd.

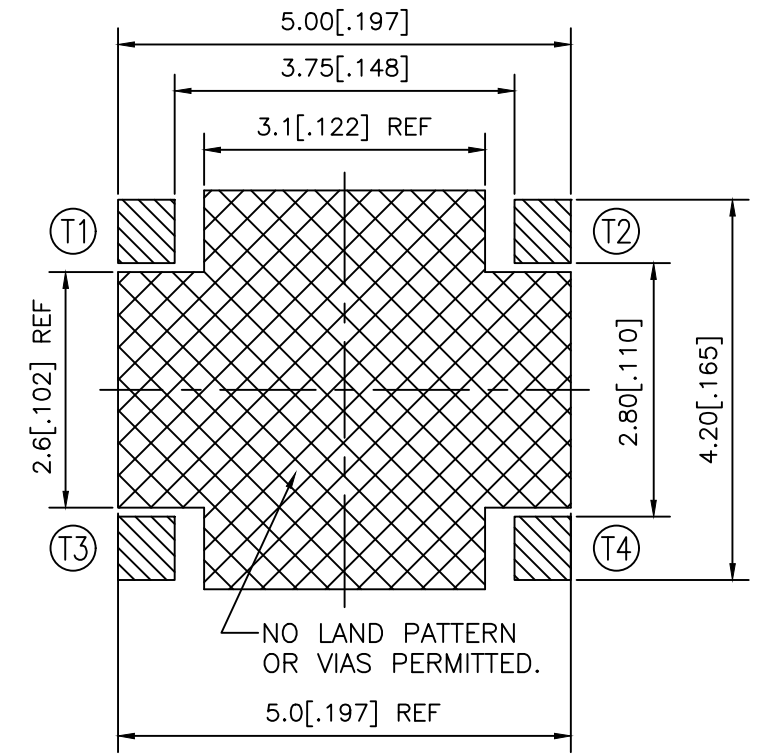
ALL RIGHTS RESERVED.

REVISIONS

| P | LTR | DESCRIPTION               | DATE      | DWN | APVD |
|---|-----|---------------------------|-----------|-----|------|
|   | B   | REVISED PER ECR-19-004770 | 10APR2019 | SR  | DD   |



CIRCUIT DIAGRAM

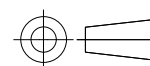


P.C.B. LAYOUT

|                      |                   |             |
|----------------------|-------------------|-------------|
| 260±50               | MCSLPT4644B4PHTR  | 2337235-4   |
| 200±50               | MCSLPT4644B3PHTR  | 2337235-3   |
| 160±50               | MCSLPT4644B2PHTR  | 2337235-2   |
| 100±50               | MCSLPT4644B1PHTR  | 2337235-1   |
| ACTUATION FORCE (gf) | SMART PART NUMBER | PART NUMBER |

THIS DRAWING IS A CONTROLLED DOCUMENT.

DIMENSIONS:  
mm [INCHES]



TOLERANCES UNLESS OTHERWISE SPECIFIED:

|        |              |
|--------|--------------|
| 0 PLC  | ± -          |
| 1 PLC  | ± -          |
| 2 PLC  | ± 0.2 [.008] |
| 3 PLC  | ± -          |
| 4 PLC  | ± -          |
| ANGLES | ± -          |

MATERIAL

FINISH

DWN 04JUL2018

GANESH C M

CHK 04JUL2018

ALEXANDER SHARPE

APVD 04JUL2018

ALEXANDER SHARPE

PRODUCT SPEC

APPLICATION SPEC

WEIGHT

CUSTOMER DRAWING

NAME

SWITCH, TACTILE, LOW-PROFILE, MICRO-MINI,  
4.6 x 4.4 x 1.05, J BEND

SIZE

CAGE CODE

DRAWING NO

RESTRICTED TO

A3 00779

C-2337235

CUSTOMER DRAWING

SCALE NTS

SHEET 1 OF 3

REV B

**STE** TE Connectivity Ltd.

THIS DRAWING IS UNPUBLISHED.

RELEASED FOR PUBLICATION

© COPYRIGHT - TE Connectivity Ltd.

ALL RIGHTS RESERVED.

REVISIONS

| P | LTR | DESCRIPTION | DATE | DWN | APVD |
|---|-----|-------------|------|-----|------|
| - | -   | SEE SHEET 1 | -    | -   | -    |

NOTES:

1. MATERIALS:

TERMINAL: COPPER ALLOY, SILVER FINISH  
 BASE: THERMOPLASTIC, UL 94V-0, BLACK  
 ACTUATOR: SILICONE RUBBER  
 CONTACT: STAINLESS STEEL, SILVER FINISH

2. COMPLIANCE:

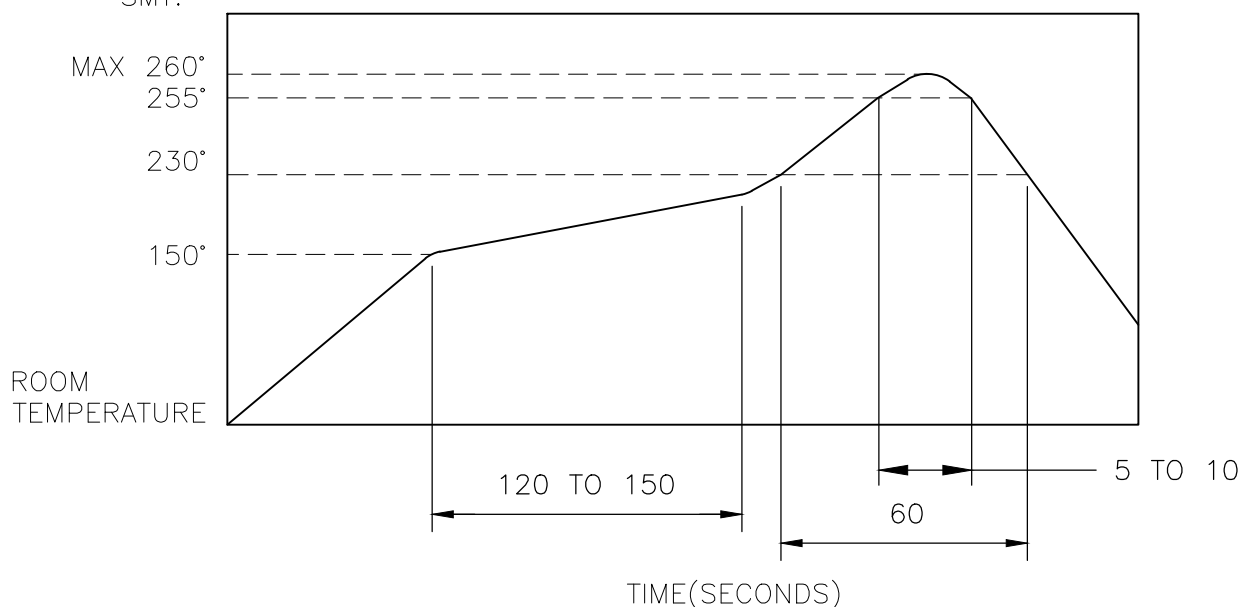
ALL MATERIALS AND FINISHES SHALL COMPLY WITH EU DIRECTIVE 2002/95/EC OF 27JAN2003(RoHS)

3. SPECIFICATIONS:

RATING: 50 mA, 12V DC  
 CONTACT RESISTANCE: 100mΩ MAXIMUM (INITIAL)  
 INSULATION RESISTANCE: 100MΩ MINIMUM (INITIAL)  
 DIELECTRIC STRENGTH: 300V AC, 1 MINUTE  
 OPERATING LIFE: 2337235-1 (100gf) = 1,000,000 CYCLES WITH LOAD  
                   2337235-2 (160gf) = 1,000,000 CYCLES WITH LOAD  
                   2337235-3 (200gf) = 500,000 CYCLES WITH LOAD  
                   2337235-4 (260gf) = 500,000 CYCLES WITH LOAD  
 TRAVEL: 0.2±0.1 (.008±.004)  
 ACTUATION FORCE: 2337235-1 = 100±50gf  
                       2337235-2 = 160±50gf  
                       2337235-3 = 200±50gf  
                       2337235-4 = 260±50gf  
 OPERATING TEMPERATURE: -20° TO 70°C  
 STORAGE TEMPERATURE: -30° TO 80°C

4. SOLDER CONDITIONS :

SMT:



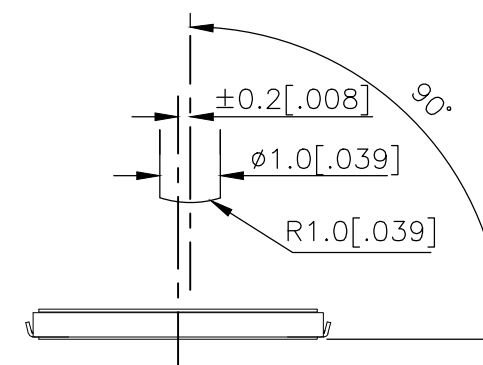
THE CONDITON NOTED ABOVE IS THE TEMPERATURE OF THE COPPER FOIL ON THE SURFACE OF THE PCB. THERE ARE CASES WHERE THE TEMPERATURE OF THE BOARD GREATLY DIFFERS FROM THE SURFACE OF THE SWITCH. DO NOT ALLOW THE SURFACE TEMPERATURE OF THE SWITCH TO EXCEED 260°C.

MANUAL SOLDERING:

|                           |                   |
|---------------------------|-------------------|
| SOLDERING TEMPERATURE     | 350°C MAXIMUM     |
| CONTINUOUS SOLDERING TIME | 5 SECONDS MAXIMUM |

HANDLING PRECAUTIONS:

- CARE SHOULD BE EXERCISED SO THAT FLUX FROM THE TOP SURFACE OF THE PRINTED CIRCUIT BOARD DOES NOT ADHERE TO THE SWITCH.
- DO NOT WASH THE SWITCH
- OPERATING PRECAUTIONS:
  - DO NOT ACTUATE THE SWITCH WITH EXCESSIVE FORCE
  - DISCONTINUE FORCE AFTER THE SWITCH HAS BEEN ACTUATED SO AS TO AVOID DEFORMATION OF THE COMPONENTS OF THE SWITCH. DEFORMATION OF THE COMPONENTS MAY CAUSE THE SWITCH TO MALFUNCTION.
  - ALIGN THE PLUNGER WITH THE SWITCH TO INSURE PROPER OPERATION



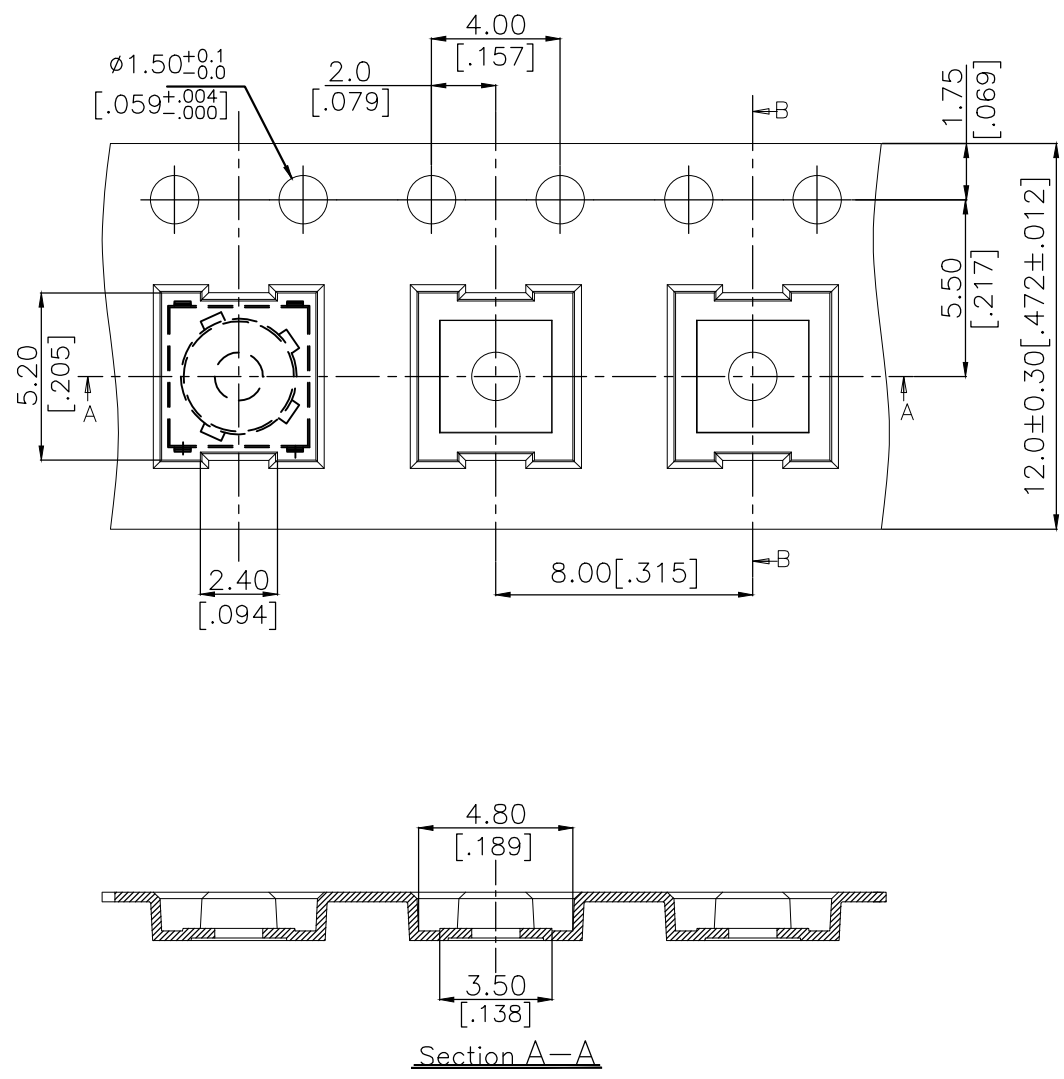
RECOMMENDED OPERATING CONDITIONS

|  |  |                  |  |           |                      |
|--|--|------------------|--|-----------|----------------------|
| THIS DRAWING IS A CONTROLLED DOCUMENT. |  | DWN              | 04JUL2018  |           | TE Connectivity Ltd. |
|  |  | CHK              | 04JUL2018  |           |                      |
|  |  | APVD             | 04JUL2018  |           |                      |
|  |  | NAME             | ALEXANDER SHARPE   |           |                      |
| DIMENSIONS:                            | TOLERANCES UNLESS OTHERWISE SPECIFIED: | PRODUCT SPEC     | SWITCH, TACTILE, LOW-PROFILE, MICRO-MINI, 4.6 x 4.4 x 1.05, J BEND |           |                      |
| mm [INCHES]                            |  | APPLICATION SPEC | -  |           |                      |
|  | 0 PLC ± -                              | WEIGHT           | SIZE   | CAGE CODE | DRAWING NO           |
|  | 1 PLC ± -                              |                  | A3   | 00779     | C-2337235            |
|  | 2 PLC ± 0.2 [.008]                     |                  | RESTRICTED TO  |           |                      |
|  | 3 PLC ± -                              |                  | -  |           |                      |
|  | 4 PLC ± -                              |                  | SCALE  | SHEET     | REV                  |
|  | ANGLES ± -                             |                  | NTS  | 2 OF 3    | B                    |
| MATERIAL                               | FINISH                                 | CUSTOMER DRAWING |  |           |                      |
| -                                      | -                                      |                  |  |           |                      |

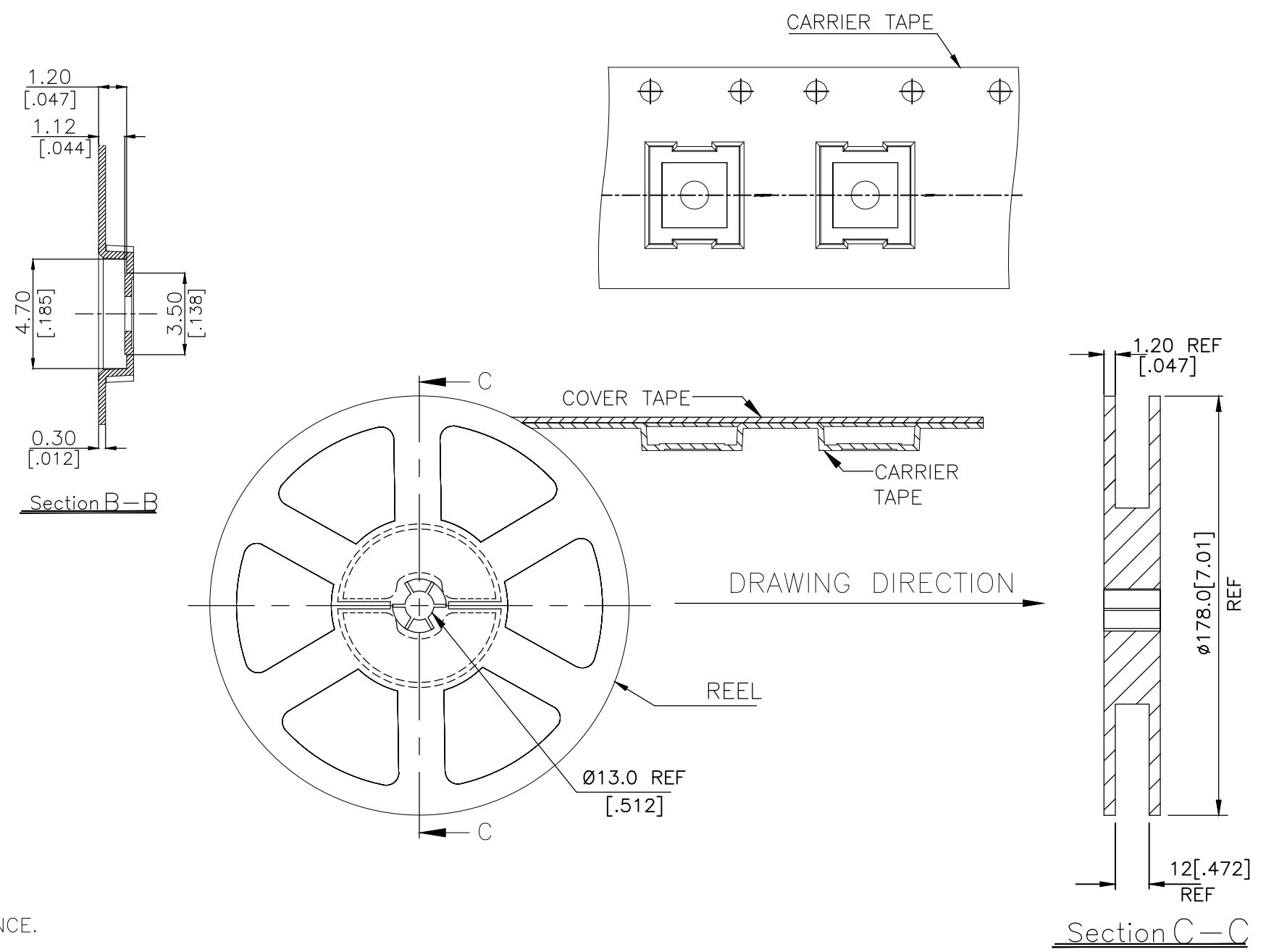
THIS DRAWING IS UNPUBLISHED. RELEASED FOR PUBLICATION  
 © COPYRIGHT - TE Connectivity Ltd. ALL RIGHTS RESERVED.

| REVISIONS |     |             |      |     |      |
|-----------|-----|-------------|------|-----|------|
| P         | LTR | DESCRIPTION | DATE | DWN | APVD |
| -         | -   | SEE SHEET 1 | -    | -   | -    |

THE DIMENSIONS OF CARRIER TAPE AND REEL



ORIENTATION OF PILOT HOLES



6. PACKAGING:

1. THE TAPE AND REEL ARE SHOWN FOR CUSTOMER APPLICATION REFERENCE. PACKAGING NOTES 3 AND 4 ARE REQUIRED BUT NOT ILLUSTRATED.
2. 1,500 SWITCHES PER REEL.
3. THE REEL, DESICCANT POUCH AND HUMIDITY CARD ARE SEALED IN A MOISTURE BARRIER BAG PER THE CURRENT REVISION OF IPC/JEDEC J-STD-033, MSL 2A REQUIREMENTS.
4. THE MOISTURE BARRIER BAG IS LABELED PER THE CURRENT REVISION OF IPC/JEDEC J-STD-033, MSL 2A REQUIREMENTS.

|  |  |                                 |   |              |                 |                      |                 |
|--|--|---------------------------------|---|--------------|-----------------|----------------------|-----------------|
| THIS DRAWING IS A CONTROLLED DOCUMENT.   |  | DWN GANESH C M 04JUL2018        | TE Connectivity Ltd.  |              |                 |                      |                 |
| DIMENSIONS: mm [INCHES]  |  | CHK ALEXANDER SHARPE 04JUL2018  |   |              |                 |                      |                 |
| TOLERANCES UNLESS OTHERWISE SPECIFIED:   |  | APVD ALEXANDER SHARPE 04JUL2018 | NAME SWITCH, TACTILE, LOW-PROFILE, MICRO-MINI, 4.6 x 4.4 x 1.05, J BEND |              |                 |                      |                 |
| 0 PLC ± -<br>1 PLC ± -<br>2 PLC ± 0.2 [.008]<br>3 PLC ± -<br>4 PLC ± -<br>ANGLES ± - |  | PRODUCT SPEC -                  | APPLICATION SPEC -  |              |                 |                      |                 |
| MATERIAL -   |  | FINISH -                        | WEIGHT -  | SIZE A3      | CAGE CODE 00779 | DRAWING NO C-2337235 | RESTRICTED TO - |
| CUSTOMER DRAWING   |  |                                 | SCALE NTS   | SHEET 3 OF 3 | REV B           |                      |                 |



Компания «ЭлектроПласт» предлагает заключение долгосрочных отношений при поставках импортных электронных компонентов на взаимовыгодных условиях!

Наши преимущества:

- Оперативные поставки широкого спектра электронных компонентов отечественного и импортного производства напрямую от производителей и с крупнейших мировых складов;
- Поставка более 17-ти миллионов наименований электронных компонентов;
- Поставка сложных, дефицитных, либо снятых с производства позиций;
- Оперативные сроки поставки под заказ (от 5 рабочих дней);
- Экспресс доставка в любую точку России;
- Техническая поддержка проекта, помощь в подборе аналогов, поставка прототипов;
- Система менеджмента качества сертифицирована по Международному стандарту ISO 9001;
- Лицензия ФСБ на осуществление работ с использованием сведений, составляющих государственную тайну;
- Поставка специализированных компонентов (Xilinx, Altera, Analog Devices, Intersil, Interpoint, Microsemi, Aeroflex, Peregrine, Syfer, Eurofarad, Texas Instrument, Miteq, Cobham, E2V, MA-COM, Hittite, Mini-Circuits, General Dynamics и др.);

Помимо этого, одним из направлений компании «ЭлектроПласт» является направление «Источники питания». Мы предлагаем Вам помощь Конструкторского отдела:

- Подбор оптимального решения, техническое обоснование при выборе компонента;
- Подбор аналогов;
- Консультации по применению компонента;
- Поставка образцов и прототипов;
- Техническая поддержка проекта;
- Защита от снятия компонента с производства.



#### Как с нами связаться

**Телефон:** 8 (812) 309 58 32 (многоканальный)

**Факс:** 8 (812) 320-02-42

**Электронная почта:** [org@eplast1.ru](mailto:org@eplast1.ru)

**Адрес:** 198099, г. Санкт-Петербург, ул. Калинина, дом 2, корпус 4, литера А.