



With over 26,000 combinations Bulgin's mains power entry modules offer a very adaptable and flexible solution to panel design. Power entry modules allow combinations of mains inlets and outlets, filtered inlets, switches, fuseholders, voltage selectors and indicators mounted in either horizontal or vertical format bezels ready for quick snap-fit assembly. The compact design occupies the minimum of panel area and a single rectangular mounting hole, offering easy installation for this mains power entry module.

Our range offers a flange fixing alternative for designers who prefer the security of screw fixing. All types and variations are available through Bulgin's extensive distribution network.

### Components used in Power Entry Modules.

**Note: Components are Approved Individually (where applicable). Please see individual component pages for full specifications.**

### IEC Connectors Fuseholders and Voltage Selectors

Type	Description	Rating	Approvals
DX0928	Neon Indicator	110V or 250V a.c./d.c. working	
FX0359	5 x 20mm Fuseholder	Max. rating 10A. 250V See Page 192	
PF0011	C14 Power Inlet with Integral 5 x 20mm Fuseholder	Max. rating 10A. 250V a.c. See Page 136	
PF0033	C14 Power Inlet with Integral twin 5 x 20mm Fuseholder	Max. rating 10A. 250V a.c. See Page 137	
PX0575	C14 Power Inlet, Cold condition	Max. rating 10A. 250V a.c. See Page 132	
PX0595	C16 Power Inlet, Hot Condition	Max. rating 10A. 250V a.c. See Page 138	
PX0695	Sheet F Power Outlet	Max. rating 10A. 250V a.c. See Page 145	
PX0783	Sheet F Shuttered Power Outlet	Max. rating 10A. 250V a.c. See Page 146	
PX0598	C20 Power Inlet	Max. rating 16A, 250V a.c. See Page 148	
VS0001	Voltage Selector marked 120/240V	Max. rating 6.3A. 120/240V a.c. See Page 114	

\*Filtered options for 6.3mm tag versions only

### Switches and Indicators

No Poles	Illumination	Current Ratings	Circuit	Approvals
Single Pole	Non-illuminated	Max. rating 16A Resistive, 4A Inductive, 250Vac.		
	High Inrush	Max. rating 16A Resistive, 4A Inductive, 250Vac. Inrush current, 150A to IEC65.		
	Illuminated	Max. rating 16A Resistive, 4A Inductive, 250Vac.		
Double Pole	Non-illuminated	Max. rating 16A Resistive, 4A Inductive, 250Vac.		
	High Inrush	Max. rating 16A Resistive, 4A Inductive, 250Vac. Inrush current, 150A to IEC65.		
	Illuminated	Max. rating 16A Resistive, 4A Inductive, 250Vac. 250Vac Neon.		
For Mini Bezel: Single Pole	Non-illuminated	Max. rating 10A Resistive, 4A Inductive, 250Vac.		
	Illuminated	Max. rating 10A Resistive, 4A Inductive, 250Vac. 250Vac Neon.		
Double Pole	Non-illuminated	Max. rating 10A Resistive, 4A Inductive, 250Vac.		
	High Inrush	Max. rating 10A Resistive, 4A Inductive, 250Vac. Inrush current, 85A to EN61058-1.		
	Illuminated	Max. rating 10A Resistive, 4A Inductive, 250Vac. 250Vac Neon.		
Indicator		250Vac neon lamp connected internally to terminals.		

**RoHS** Power Entry Module range and all components are compliant

## Overview of Power Entry Modules

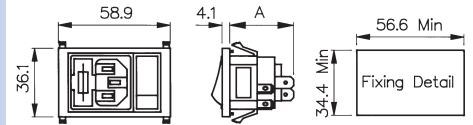
Style	Inlets				Outlets Sheet F	Inlet/ Outlet Combinations	
	C14	C14 Fused	C16	C20		C14	C14 Fused
Snap to Panel Vertical  	With Single Pole switch Page 163  With other components Pages 164, 165, 166	With Single Pole switch Page 161  With Double Pole Switch Page 162	With Single Pole switch Page 163  With other components Pages 164, 165, 166	With Single Pole switch Page 167	With Single Pole switch Page 169	With other components Page 168	
Snap to Panel Horizontal  	Mini Bezel With Single Pole Switch Page 175  Mini Bezel With Double Pole Switch Page 175	With Single Pole switch Page 170  With Double Pole Switch Page 171				With Single Pole switch Page 177	With Double Pole switch Page 173  No additional components Page 174
Flange Mount - Vertical  		With Single Pole switch Page 176  With Double Pole switch Page 177					

## Vertical Module Arrangement



BZV01/Z0000/01

- Fused Inlet with 2.8mm or 6.3mm tags
- Single Pole Switch Variations
- Filtered Inlet Option
- Options of I/O marked switches



BZV01/\*\*\*\*\*/\*\* } A = 59.7 With Filter  
 BZV02/\*\*\*\*\*/\*\* } A = 27.4 Without Filter  
 BZV15/\*\*\*\*\*/\*\* } A = 59.7 With Filter  
 BZV16/\*\*\*\*\*/\*\* } A = 37.9 Without Filter  
 Panel Thickness. 1.0, 1.5, 2.0, 3.0mm.

## How to order -

**BZV XX****/ XXXXX****/ XX****Type of Inlet / Outlet**

Single Fused C14 Power Inlet (cold condition),  
6.3 or 2.8mm tabs:  
01 = PF0011/63  
02 = PF0011/28

Twin Fused C14 Power Inlet (cold condition),  
6.3 or 2.8mm tabs:  
15 = PF0033/63  
16 = PF0033/28

**Filtered or Non Filtered Inlet**

Z0000 = Non Filtered  
Axxxx = Standard

For Filtered inlet use 6th to 9th characters from filter  
ordering code see pages 179 -180  
E.g. BZV01/A0620/01

**Filtered or Non Filtered Inlet**

Single Pole Switch:  
01 = S.P. Switch

Single Pole Neon Switch:  
02 = S.P. Red Neon Switch  
08 = S.P. Green Neon Switch

Neon Indicator:  
03 = Red Neon Indicator

Single Pole High Inrush Switch:  
46 = S.P. High Inrush Switch

Single Pole Switch Marked I/O:  
69 = S.P. Switch (I/O)

Single Pole Neon Switch Marked (I/O):  
71 = S.P. Red Neon Switch (I/O)  
74 = S.P. Green Neon Switch (I/O)

Single Pole High Inrush Switch Marked (I/O):  
98 = S.P. High Inrush Switch (I/O)

## Vertical Module Arrangement



BZV01/Z0000/10

- Fused Inlet with 2.8mm or 6.3mm tags
- Double Pole Switch or Indicator Variations
- Filtered Inlet Option
- Options of I/O marked switches



BZV01/\*\*\*\*\*/\*\* } A = 59.7 With Filter  
 BZV02/\*\*\*\*\*/\*\* } A = 27.4 Without Filter  
 BZV15/\*\*\*\*\*/\*\* } A = 59.7 With Filter  
 BZV16/\*\*\*\*\*/\*\* } A = 37.9 Without Filter  
 Panel Thickness: 1.0, 1.5, 2.0, 3.0mm.

## How to order -

**BZV XX****XXXXX****XX****Type of Inlet / Outlet**

Single Fused C14 Power Inlet (cold condition),  
6.3 or 2.8mm tabs:  
01 = PF0011/63  
02 = PF0011/28

Twin Fused C14 Power Inlet (cold condition),  
6.3 or 2.8mm tabs:  
15 = PF0033/63  
16 = PF0033/28

**Filtered or Non Filtered Inlet**

Z0000 = Non Filtered

Axxxx = Standard

For Filtered inlet use 6th to 9th characters from filter  
ordering code see pages 179-180  
E.g. BZV01/A0620/10

**Combination of Other Components**

Neon Indicator:  
D3 = Red Neon Indicator

Double Pole Switch:  
10 = D.P. Switch

Double Pole Neon Switch:  
11 = D.P. Red Neon Switch  
12 = D.P. Green Neon Switch

Double Pole High Inrush Switch:  
13 = D.P. High Inrush Switch

Double Pole Switch Marked I/O:  
70 = D.P. Switch (I/O)

Double Pole Neon Switch Marked (I/O):  
76 = D.P. Red Neon Switch (I/O)  
77 = D.P. Green Neon Switch (I/O)

Double Pole High Inrush Switch Marked  
(I/O):

78 = D.P. High Inrush Switch (I/O)  
B1 = D.P. High Inrush Green Neon Switch  
(I/O)

## Vertical Module Arrangement



BZV03/Z0000/02

- Inlet with 2.8mm or 6.3mm tags
- Single Pole Switch or Neon Indicator Variations
- Filtered Inlet Option
- Options of I/O marked switches
- Non Fused



BZV03, BZV04/\*\*\*\*/\*\* A = 62.5 With Filter  
28.1 Without Filter

BZV05, BZV06/\*\*\*\*/\*\* A = 28.1

Panel Thickness. 1.0, 1.5, 2.0, 3.0mm.

## How to order -

**BZV XX****XXXXX****XX****Type of Inlet / Outlet**

C14 Power Inlet (cold condition), 6.3 or 2.8mm tabs:

03 = PX0575/63

04 = PX0575/28

C16 Power Inlet (hot condition), 6.3 or 2.8mm tabs:

05 = PX0595/63

06 = PX0595/28

Please note type 05 and 06 are not available in filtered version

**Filtered or Non Filtered Inlet**

Z0000 = Non Filtered

Axxxx = Standard

For Filtered inlet use 6th to 9th characters from filter ordering code see page 178  
E.g. BZV03/A0120/02

**Combination of Other Components**

Single Pole Switch:  
01 = S.P. Switch

Single Pole Neon Switch:  
02 = S.P. Red Neon Switch  
08 = S.P. Green Neon Switch

Neon Indicator:  
03 = Red Neon Indicator  
Single Pole High Inrush Switch:  
46 = S.P. High Inrush Switch

Single Pole Switch Marked I/O:  
69 = S.P. Switch (I/O)

Single Pole Neon Switch Marked (I/O):  
71 = S.P. Red Neon Switch (I/O)  
74 = S.P. Green Neon Switch (I/O)

Single Pole High Inrush Switch Marked (I/O):

98 = S.P. High Inrush Switch (I/O)

## Vertical Module Arrangement



BZV03/Z0000/07

- Inlet with 2.8mm or 6.3mm tags
- Double Pole Switch/  
Fuseholder/Indicator/  
Voltage Selectors/  
Blanking Plate
- Filtered Inlet Option
- Options of I/O marked switches



Panel Thickness: 1.0, 1.5, 2.0, 3.0mm.

BZV03, BZV04/\*\*\*\*/\*\* A = 62.5 With Filter  
39.0 Without Filter

BZV05, BZV06/\*\*\*\*/\*\* A = 39.0

## How to order -

BZV XX

/ XXXXX

/ XX

## Type of Inlet / Outlet

## Filtered or Non Filtered Inlet

## Combination of Other Components

C14 Power Inlet  
(cold condition),  
6.3 or 2.8mm tabs:

Z0000 = Non Filtered

Axxxx = Standard

03 = PX0575/63  
04 = PX0575/28For Filtered inlet use 6th  
to 9th characters from filter  
ordering code see page 178  
E.g. BZV03/A0120/07C16 Power Inlet (hot  
condition), 6.3 or  
2.8mm tabs:05 = PX0595/63  
06 = PX0595/28Please note type 05  
and 06 are not  
available in  
filtered versionTwin Fuseholder and Double Pole  
Switch:

05 = 2 x FX0359 + D.P. Switch

Twin Fuseholder and Double Pole Neon  
Switch:06 = 2 x FX0359 + D.P. Red Neon  
Switch09 = 2 x FX0359 + D.P. Green Neon  
Switch19 = 2 x FX0359 + D.P. Red Neon  
Switch 125V

Twin Fuseholder and Neon Indicator:

07 = 2 x FX0359 + Red Neon  
IndicatorVoltage Selector, Fuseholder and Double  
Pole Switch:15 = 1 x VS0001 + 1 x FX0359 +  
Double Pole switchVoltage Selector, Fuseholder and Double  
Pole Neon Switch:16 = 1 x VS0001 + 1 x FX0359 + D.P.  
Red Neon Switch18 = 1 x VS0001 + 1 x FX0359 + D.P.  
Green Neon SwitchVoltage Selector, Fuseholder and Neon  
Indicator:17 = 1 x VS0001 + 1 x FX0359 + Red  
Neon IndicatorTwin Fuseholder and Double Pole High  
Inrush Switch:20 = 2 x FX0359 + D.P. High Inrush  
SwitchTwin Fuseholder and Double Pole High  
Inrush Neon Switch:21 = 2 x FX0359 + 1 x D.P. High  
Inrush Green Neon Switch22 = 2 x FX0359 + 1 x D.P. High  
Inrush Red Neon SwitchVoltage Selector, Neon Indicator and  
Double Pole Switch

25 = 1 x VS0001 + 1 x

DX0928/110V/Red + D.P. Switch

26 = 1 x VS0001 + 1 x

DX0928/110V/Green + D.P. Switch

27 = 1 x VS0001 + 1 x

DX0928/250V/Red + D.P. Switch

28 = 1 x VS0001 + 1 x

DX0928/250V/Green + D.P. Switch

Voltage Selector, Neon Indicator and  
Double Pole High Inrush Switch:

29 = 1 x VS0001 + 1 x

DX0928/250V/Red + D.P. High Inrush  
Switch

30 = 1 x VS0001 + 1 x

DX0928/250V/Green + D.P. High  
Inrush SwitchFuseholder, Neon Indicator and Double  
Pole Switch

31 = 1 x FX0359 + 1 x

DX0928/110V/Red + D.P. Switch

32 = 1 x FX0359 + 1 x

DX0928/110V/Green + D.P. Switch

33 = 1 x FX0359 + 1 x

DX0928/250V/Red + D.P. Switch

34 = 1 x Fx0359 + 1 x

DX0928/250V/Green + D.P. Switch

Fuseholder, Neon Indicator and Double  
Pole High Inrush Switch:

35 = 1 x FX0359 + 1 x

DX0928/250V/Red + D.P. High Inrush  
Switch

36 = 1 x FX0359 + 1 x

DX0928/250V/Green + D.P. High  
Inrush SwitchFuseholder, Blanking Plate and Double  
Pole High Inrush Neon Switch:47 = 1 x FX0359 + 1 x Blanking Plate  
(Right) + D.P. High Inrush Green Neon  
SwitchFuseholder, Blanking Plate and Double  
Pole Switch:48 = 1 x FX0359 + 1 x Blanking Plate  
(Right) + D.P. Switch

## Vertical Module Arrangement



BZV03/Z0000/07

- Inlet with 2.8mm or 6.3mm tags
- Double Pole Switch/
- Fuseholder/Indicator/ Voltage Selectors/ Blanking Plate
- Filtered Inlet Option
- Options of I/O marked switches



Panel Thickness: 1.0, 1.5, 2.0, 3.0mm.

BZV03, BZV04/\*\*\*\*\*/\*\* A = 62.5 With Filter  
39.0 Without Filter

BZV05, BZV06/\*\*\*\*\*/\*\* A = 39.0

## How to order -

**BZV XX****XXXXX****XX**

## Type of Inlet / Outlet

C14 Power Inlet (cold condition), 6.3 or 2.8mm tabs:

03 = PX0575/63  
04 = PX0575/28

C16 Power Inlet (hot condition), 6.3 or 2.8mm tabs:

05 = PX0595/63  
06 = PX0595/28

Please note type 05 and 06 are not available in filtered version

## Filtered or Non Filtered Inlet

Z0000 = Non Filtered

Axxxx = Standard

For Filtered inlet use 6th to 9th characters from filter ordering code see page 178  
E.g. BZV03/A0120/07

## Combination of Other Components

Twin Fuseholder and Double Pole Switch Marked (I/O):  
72 = 2 x FX0359 + D.P. Switch (I/O)Twin Fuseholder and Double Pole Neon Switch Marked (I/O):  
73 = 2 x FX0359 + D.P. Red Neon Switch (I/O)  
75 = 2 x FX0359 + D.P. Green Neon Switch (I/O)  
82 = 2 x FX0359 + D.P. Red Neon Switch 125V(I/O)Voltage Selector, Fuseholder and Double Pole Switch Marked (I/O):  
79 = 1 x VS0001 + 1 x FX0359 + Double Pole switch (I/O)Voltage Selector, Fuseholder and Double Pole Neon Switch Marked (I/O):  
80 = 1 x VS0001 + 1 x FX0359 + D.P. Red Neon Switch (I/O)  
81 = 1 x VS0001 + 1 x FX0359 + D.P. Green Neon Switch (I/O)Twin Fuseholder and Double Pole High Inrush Switch Marked (I/O):  
83 = 2 x FX0359 + D.P. High Inrush Switch (I/O)Twin Fuseholder and Double Pole High Inrush Neon Switch Marked (I/O):  
84 = 2 x FX0359 + 1 x D.P. High Inrush Green Neon Switch (I/O)  
85 = 2 x FX0359 + 1 x D.P. High Inrush Red Neon Switch (I/O)Voltage Selector, Neon Indicator and Double Pole Switch Marked (I/O):  
86 = 1 x VS0001 + 1 x DX0928/110V/Red + D.P. Switch (I/O)  
87 = 1 x VS0001 + 1 x DX0928/110V/Green + D.P. Switch (I/O)  
88 = 1 x VS0001 + 1 x DX0928/250V/Red + D.P. Switch (I/O)  
89 = 1 x VS0001 + 1 x DX0928/250V/Green + D.P. Switch (I/O)Voltage Selector, Neon Indicator and Double Pole High Inrush Switch Marked (I/O):  
90 = 1 x VS0001 + 1 x DX0928/250V/Red + D.P. High Inrush Switch (I/O)  
91 = 1 x VS0001 + 1 x DX0928/250V/Green + D.P. High Inrush Switch (I/O)Fuseholder, Neon Indicator and Double Pole Switch Marked (I/O):  
92 = 1 x FX0359 + 1 x DX0928/110V/Red + D.P. Switch (I/O)  
93 = 1 x FX0359 + 1 x DX0928/110V/Green + D.P. Switch (I/O)  
94 = 1 x FX0359 + 1 x DX0928/250V/Red + D.P. Switch (I/O)  
95 = 1 x FX0359 + 1 x DX0928/250V/Green + D.P. Switch (I/O)Fuseholder, Neon Indicator and Double Pole High Inrush Switch Marked (I/O):  
96 = 1 x FX0359 + 1 x DX0928/250V/Red + D.P. High Inrush Switch (I/O)  
97 = 1 x FX0359 + 1 x DX0928/250V/Green + D.P. High Inrush Switch (I/O)Fuseholder, Blanking Plate and Double Pole High Inrush Neon Switch Marked (I/O):  
99 = 1 x FX0359 + 1 x Blanking Plate (Right) + D.P. High Inrush Green Neon Switch (I/O)Fuseholder, Blanking Plate and Double Pole Switch Marked (I/O):  
A0 = 1 x FX0359 + 1 x Blanking Plate (Right) + D.P. Switch (I/O)  
B2 = 1 x VS0002 + 1 x Blanking Plate  
B3 = 1 x FX0359 + 1 x Blanking Plate + D.P. High Inrush Switch (I/O)  
B5 = 1 x VS0001 + 1 x Blanking Plate + D.P. Switch (I/O)



## Vertical Module Arrangement



BZV04/Z0000/04

- Inlet with 2.8mm or 6.3mm tags
- Fuseholder/Voltage Selector/Indicator options/Blanking plate



BZV03, BZV04/\*\*\*\*/\*\* A = 62.5 With Filter,  
39.0 Without Filter.

BZV05, BZV06/\*\*\*\*/\*\* A = 39.0.

Panel Thickness: 1.0, 1.5, 2.0, 3.0mm.

## How to order -

**BZV XX****XXXXX****XX****Type of Inlet / Outlet**

C14 Power Inlet (cold condition), 6.3 or 2.8mm tabs:

03 = PX0575/63  
04 = PX0575/28

C16 Power Inlet (hot condition), 6.3 or 2.8mm tabs:

05 = PX0595/63  
06 = PX0595/28

Please note type 05 and 06 are not available in filtered version

**Filtered or Non Filtered Inlet**

Z0000 = Non Filtered

Axxxx = Standard

For Filtered inlet use 6th to 9th characters from filter ordering code see page 178  
E.g. BZV03/A0120/04

**Combination of Other Components**

Twin Fuseholder:  
04 = 2 x FX0359

Voltage Selector and Fuseholder:  
14 = 1 x VS0001 + 1 x FX0359

Voltage selector and Neon:  
37 = 1 x VS0001 + DX0928/110V/Red  
38 = 1 x VS0001 + DX0928/110V/Green  
39 = 1 x VS0001 + DX0928/250V/Red  
40 = 1 x VS0001 + DX0928/250V/Green

Fuseholder and Neon:  
41 = 1 x FX0359 + DX0928/110V/Red  
42 = 1 x FX0359 + DX0928/110V/Green  
43 = 1 x FX0359 + DX0928/250V/Red  
44 = 1 x FX0359 + DX0928/250V/Green

Fuseholder and Blanking Plate:  
45 = 1 x FX0359 + Blanking Plate

Voltage Selector and Blanking Plate:  
B2 = 1 x VS0001 + Blanking Plate

## Vertical Module Arrangement



BZV49/Z0000/69

- Inlet with 4.8mm or 6.3mm tags
- Single Pole Switch marked I/O
- Illuminated, red or green, switches
- High inrush non-illuminated switch



## How to order -

**BZV XX****XXXXX****XX****Type of Inlet / Outlet**

C20 Power Inlet (cold condition), 4.8 or 6.3mm tabs:

49 = PX0598/63  
50 = PX0598/48

**Filtered or Non Filtered Inlet**

Z0000 = Non Filtered

**Combination of Other Components**

Single Pole Switch:  
01 = S.P. Switch

Single Pole Switch Marked (I/O):  
69 = S.P. Switch (I/O)

Single Pole Illuminated Switch:  
02 = S.P. Illuminated Red  
08 = S.P. Illuminated Green

Single Pole Non-illuminated High Inrush Switch Marked I/O:

98 = S.P. High Inrush Switch (I/O)  
Single Pole Illuminated (Red or Green 250v Neon) Switch Marked I/O:

71 = S.P. Switch Illuminated Red (I/O)  
74 = S.P. Switch Illuminated Green (I/O)

## Vertical Module Arrangement



BZV09/Z0000/04

- Inlet/Outlet Combination
- 2.8mm or 6.3mm tabs
- Filtered Inlet and Blanking Plate options
- Shuttered or Non-shuttered Outlet
- Fused



## How to order -

**BZV XX****XXXXX****XX****Type of Inlet / Outlet**

C14 Power Inlet (cold condition) and Sheet F  
Non-shuttered Power Outlet, 2.8 or 6.3mm tabs:

09 = PX0575/63 + PX0695/63  
10 = PX0575/28 + PX0695/28

C14 Power Inlet (cold condition) and Sheet F  
Shuttered Power Outlet, 2.8 or 6.3mm tabs:

17 = PX0575/63 + PX0783/63  
18 = PX0575/28 + PX0783/28

**Filtered or Non Filtered Inlet**

Z0000 = Non Filtered

Axxxx = Standard

For Filtered inlet use 6th to 9th characters from  
filter ordering code see page 178  
E.g. BZV09/A0120/04

**Combination of Other Components**

Twin Fuseholder:  
04 = 2 x FX0359

Voltage Selector and Fuseholder:  
14 = 1 x VS0001 + 1 x FX0359

Voltage selector and Neon:  
37 = 1 x VS0001 + DX0928/110V/Red  
38 = 1 x VS0001 + DX0928/110V/Green  
39 = 1 x VS0001 + DX0928/250V/Red  
40 = 1 x VS0001 + DX0928/250V/Green

Fuseholder and Neon:  
41 = 1 x FX0359 + DX0928/110V/Red  
42 = 1 x FX0359 + DX0928/110V/Green  
43 = 1 x FX0359 + DX0928/250V/Red  
44 = 1 x FX0359 + DX0928/250V/Green

Fuseholder and Blanking Plate:  
45 = 1 x FX0359 + Blanking Plate

Voltage Selector and Blanking Plate:  
B2 = 1 x VS0001 + Blanking Plate

Vertical Module Arrangement



BZV45/Z0000/02

- Outlet with 2.8mm or 6.3mm tags
- Shuttered or Non-Shuttered
- Single Pole Switch or Neon Indicator
- I/O Marking Options



How to order -

<b>BZV XX</b>	<b>/ XXXXX</b>	<b>/ XX</b>
---------------	----------------	-------------

**Type of Inlet / Outlet**

Sheet F Power Outlet (non shuttered), 6.3 or 2.8mm tabs:

45 = PX0695/63  
46 = PX0695/28

Sheet F Power Outlet (shuttered), 6.3 or 2.8mm tabs:

47 = PX0783/63  
48 = PX0783/28

**Filtered or Non Filtered Inlet**

Z0000 = Non Filtered

**Combination of Other Components**

Single Pole Switch:  
01 = S.P. Switch

Single Pole Neon Switch:  
02 = S.P. Red Neon Switch  
08 = S.P. Green Neon Switch

Neon Indicator:  
03 = Red Neon Indicator

Single Pole High Inrush Switch:  
46 = S.P. High Inrush Switch

Single Pole Switch Marked I/O:  
69 = S.P. Switch (I/O)

Single Pole Neon Switch Marked (I/O):  
71 = S.P. Red Neon Switch (I/O)  
74 = S.P. Green Neon Switch (I/O)

Single Pole High Inrush Switch Marked (I/O):  
98 = S.P. High Inrush Switch (I/O)

Horizontal Module Arrangement



BZH01/Z0000/01

- Fused Inlet with 2.8mm or 6.3mm tags
- Single Pole Switch Variations
- Filtered Inlet Option
- Options of I/O marked switches



How to order -

<b>BZH XX</b>	<b>/ XXXXX</b>	<b>/ XX</b>
---------------	----------------	-------------

**Type of Inlet / Outlet**

Single Fused C14 Power Inlet (cold condition), 2.8 or 6.3mm tabs:

01 = PF0011/63  
02 = PF0011/28

Twin Fused C14 Power Inlet (cold condition), 2.8 or 6.3mm tabs:

15 = PF0033/63  
16 = PF0033/28

**Filtered or Non Filtered Inlet**

Z0000 = Non Filtered

Axxxx = Standard

For Filtered inlet use 6th to 9th characters from filter ordering code see pages 179-180  
E.g. BZH01/A0620/01

**Combination of Other Components**

Single Pole Switch:  
01 = S.P. Switch

Single Pole Neon Switch:  
02 = S.P. Red Neon Switch  
08 = S.P. Green Neon Switch

Neon Indicator:  
03 = Red Neon Indicator

Single Pole High Inrush Switch:  
46 = S.P. High Inrush Switch

Single Pole Switch Marked I/O:  
69 = S.P. Switch (I/O)

Single Pole Neon Switch Marked (I/O):  
71 = S.P. Red Neon Switch (I/O)  
74 = S.P. Green Neon Switch (I/O)

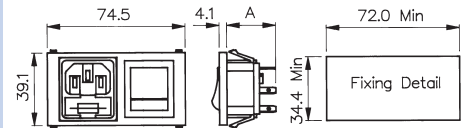
Single Pole High Inrush Switch Marked (I/O):  
98 = S.P. High Inrush Switch (I/O)

## Horizontal Module Arrangement



BZH01/Z0000/10

- Fused Inlet with 2.8mm or 6.3mm tabs
- Double Pole Switch Variations
- Filtered Inlet Option
- Options of I/O marked switches



BZH01/\*\*\*\*\*/\*\* } A = 59.7 With Filter  
 BZH02/\*\*\*\*\*/\*\* } A = 27.4 Without Filter  
 BZH15/\*\*\*\*\*/\*\* } A = 59.7 With Filter  
 BZH16/\*\*\*\*\*/\*\* } A = 37.9 Without Filter  
 Panel Thickness. 1.0, 1.5, 2.0, 3.0mm

## How to order -

**BZH XX****XXXXX****XX****Type of Inlet / Outlet**

Single Fused C14 Power Inlet (cold condition),  
2.8 or 6.3mm tabs:

01 = PF0011/63  
02 = PF0011/28

Twin Fused C14 Power Inlet (cold condition),  
2.8 or 6.3mm tabs:

15 = PF0033/63  
16 = PF0033/28

**Filtered or Non Filtered Inlet**

Z0000 = Non Filtered

Axxxx = Standard

For Filtered inlet use 6th to 9th characters from  
filter ordering code see pages 179-180  
E.g. BZH01/A0620/10

**Combination of Other Components**

Neon Indicator:  
03 = Red Neon Indicator

Double Pole Switch:  
10 = D.P. Switch

Double Pole Neon Switch:  
11 = D.P. Red Neon Switch  
12 = D.P. Green Neon Switch

Double Pole High Inrush Switch:  
13 = D.P. High Inrush Switch

Double Pole Switch marked I/O:  
70 = D.P. Switch (I/O)

Double Pole Neon Switch Marked (I/O):  
76 = D.P. Red Neon Switch (I/O)  
77 = D.P. Green Neon Switch (I/O)

Double Pole High Inrush Switch Marked  
(I/O):  
78 = D.P. High Inrush Switch (I/O)  
B1 = D.P. High Inrush Green Neon Switch  
(I/O)

## Horizontal Module Arrangement



BZH09/Z0000/01

- Inlet/Outlet Combination with 2.8mm or 6.3mm tags
- Shuttered or Non-Shuttered Outlet
- Single Pole Switch Variations
- Filtered Inlet Option
- Options of I/O marked switches



## How to order -

**BZH XX****XXXXX****XX****Type of Inlet / Outlet**

C14 Power Inlet (cold condition) and Sheet F Non-shuttered Power Outlet, 2.8 or 6.3mm tabs:

09 = PX0575/63 + PX0695/63  
10 = PX0575/28 + PX0695/28

C14 Power Inlet (cold condition) and Sheet F Shuttered Power Outlet, 2.8 or 6.3mm tabs:

17 = PX0575/63 + PX0783/63  
18 = PX0575/28 + PX0783/28

**Filtered or Non Filtered Inlet**

Z0000 = Non Filtered

Axxxx = Standard

For Filtered inlet use 6th to 9th characters from filter ordering code see page 178  
E.g. BZH09/A0120/01

**Combination of Other Components**

Single Pole Switch:  
01 = S.P. Switch

Single Pole Neon Switch:  
02 = S.P. Red Neon Switch  
08 = S.P. Green Neon Switch

Neon Indicator:  
03 = Red Neon Indicator

Single Pole High Inrush Switch:  
46 = S.P. High Inrush Switch

Single Pole Switch Marked I/O:  
69 = S.P. Switch (I/O)

Single Pole Neon Switch Marked (I/O):  
71 = S.P. Red Neon Switch (I/O)  
74 = S.P. Green Neon Switch (I/O)

Single Pole High Inrush Switch Marked (I/O):  
98 = S.P. High Inrush Switch (I/O)

## Horizontal Module Arrangement



BZH11/Z0000/10

- Inlet/Outlet Combination with 2.8mm or 6.3mm tags
- Single or Twin Fused Inlet
- Shuttered or Non-Shuttered Outlet
- Double Pole Switch Variations
- Filtered Inlet Option
- Options of I/O marked switches



## How to order -

**BZH XX****XXXXX****XX****Type of Inlet / Outlet**

Single Fused C14 Power Inlet (cold condition) and Sheet F Power Outlet, 2.8 or 6.3mm tabs:

11 = PF0011/63 + PX0695/63  
 12 = PF0011/28 + PX0695/28

Twin Fused C14 Power Inlet (cold condition) and Sheet F Power Outlet, 2.8 or 6.3mm tabs:

13 = PF0033/63 + PX0695/63  
 14 = PF0033/28 + PX0695/28

Single Fused C14 Power Inlet (cold condition) and Sheet F Shuttered Power Outlet, 2.8 or 6.3mm tabs:

19 = PF0011/63 + PX0783/63  
 20 = PF0011/28 + PX0783/28

Twin Fused C14 Power Inlet (cold condition) and Sheet F Shuttered Power Outlet, 2.8 or 6.3mm tabs:

21 = PF0033/63 + PX0783/63  
 22 = PF0033/28 + PX0783/28

**Filtered or Non Filtered Inlet**

Z0000 = Non Filtered

Axxxx = Standard

For Filtered inlet use 6th to 9th characters from filter ordering code see pages 179-180  
 E.g. BZH11/A0620/10

**Combination of Other Components**

Neon Indicator:  
 D3 = Red Neon Indicator

Double Pole Switch:  
 10 = D.P. Switch

Double Pole Neon Switch:  
 11 = D.P. Red Neon Switch  
 12 = D.P. Green Neon Switch

Double Pole High Inrush Switch:  
 13 = D.P. High Inrush Switch

Double Pole Switch Marked I/O:  
 70 = D.P. Switch (I/O)

Double Pole Neon Switch Marked (I/O):  
 76 = D.P. Red Neon Switch (I/O)  
 77 = D.P. Green Neon Switch (I/O)

Double Pole High Inrush Switch Marked (I/O):  
 78 = D.P. High Inrush Switch (I/O)  
 B1 = D.P. High Inrush Green Neon Switch (I/O)



## Horizontal Module Arrangement



BZH11/Z0000/00

- Fused Inlet/Outlet
- Combination with 2.8mm or 6.3mm tabs
- Filtered Inlet Option
- Single or Twin Fused



## How to order -

BZH XX	/ XXXXX	/ XX
<b>Type of Inlet / Outlet</b>  Single Fused C14 Power Inlet (cold condition) and Sheet F Non-shuttered Power Outlet, 2.8 or 6.3mm tabs:  11 = PF0011/63 + PX0695/63 12 = PF0011/28 + PX0695/28  Twin Fused C14 Power Inlet (cold condition) and Sheet F Non-shuttered Power Outlet, 2.8 or 6.3mm tabs:  13 = PF0033/63 + PX0695/63 14 = PF0033/28 + PX0695/28  Single Fused C14 Power Inlet (cold condition) and Sheet F Shuttered Power Outlet, 2.8 or 6.3mm tabs:  19 = PF0011/63 + PX0783/63 20 = PF0011/28 + PX0783/28  Twin Fused C14 Power Inlet (cold condition) and Sheet F Shuttered Power Outlet, 2.8 or 6.3mm tabs:  21 = PF0033/63 + PX0783/63 22 = PF0033/28 + PX0783/28	<b>Filtered or Non Filtered Inlet</b>  Z0000 = Non Filtered  Axxxx = Standard  For Filtered inlet use 6th to 9th characters from filter ordering code see pages 179-180 E.g. BZH11/A0620/00	<b>Combination of Other Components</b>  None  00 = None

## Minimum Combined Bezel Size



BZM27/Z0000/57B

- Inlet with 2.8, 4.8 or 6.3mm tags
- Horizontal Module Arrangement
- Single and Double Pole Switch Variations
- Filtered Inlet Option



Panel Thickness 1.0, 1.5, 2.0, 3.0mm

BZM27/\*\*\*\*\*/\*\*\* } A = 63.5 With Filter.  
BZM28/\*\*\*\*\*/\*\*\* } A = 29.1 Without Filter.B = 54.9 With D.P. Switch. 45.9 With S.P. Switch.  
C = 57.5 With D.P. Switch. 48.5 With S.P. Switch.

## How to order -

**BZM XX****XXXXX****XX****X****Type of Inlet / Outlet**

C14 Power Inlet (cold condition), 6.3, 4.8 &amp; 2.8mm tabs:

27 = PX0575/63  
42 = PX0575/48  
28 = PX0575/28**Filtered or Non Filtered Inlet**

Z0000 = Non Filtered

Axxxx = Standard

For Filtered inlet use 6th to 9th characters from filter ordering code see page 178  
E.g. BZM27/A0120/57B**Switch Variation**

Single Pole Switch, 4.8mm or solder tab, marked I/O:

53 = S.P. Switch, 4.8mm tab (I/O)  
54 = S.P. Switch, solder tab (I/O)

Single Pole Illuminated Switch, 4.8mm or solder tab:

55 = S.P. Switch Illum. Red, 4.8mm tab  
61 = S.P. Switch Illum. Green, 4.8mm tab  
56 = S.P. Switch Illum. Red, solder tab  
62 = S.P. Switch Illum. Green, solder tab

Double Pole Switch, 4.8mm or solder tab, marked I/O:

57 = D.P. Switch, 4.8mm tab (I/O)  
58 = D.P. Switch, solder tab (I/O)

Double Pole Illuminated Switch, 4.8mm or solder tab:

59 = D.P. Switch Illum. Red, 4.8mm tab  
63 = D.P. Switch Illum. Green, 4.8mm tab  
60 = D.P. Switch Illum. Red, solder tab  
64 = D.P. Switch Illum. Green, solder tab

Double Pole High Inrush, 4.8mm tabs:

65 = D.P. High Inrush Switch, 4.8mm tabs (S.P. format)

Double Pole High Inrush, 4.8mm tabs, marked I/O:

68 = D.P. High Inrush Switch, 4.8mm tabs, I/O (S.P. format)

Single Pole Illuminated Switch, 4.8mm or solder tab,

Marked I/O:

A1 = S.P. Switch Illum. Red, 4.8mm tab (I/O)  
A5 = S.P. Switch Illum. Green, 4.8mm tab (I/O)  
A2 = S.P. Switch Illum. Red, solder tab (I/O)  
A6 = S.P. Switch Illum. Green, solder tab (I/O)

Double Pole Illuminated Switch, 4.8mm or solder tab,

Marked I/O:

A3 = D.P. Switch Illum. Red, 4.8mm tab  
A7 = D.P. Switch Illum. Green, 4.8mm tab  
A4 = D.P. Switch Illum. Red, solder tab  
A8 = D.P. Switch Illum. Green, solder tab**Panel Thickness**

1.0mm = A

1.5mm = B

2.0mm = C

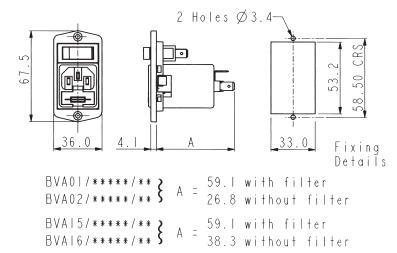
3.0mm = D

## Vertical Module Arrangement



BVA01/Z0000/02

- Fused Inlet with 2.8mm or 6.3mm tags
- Screw Fixing to Panel
- Single Pole Switch Variations
- Filtered Inlet Option
- Options of I/O marked switches

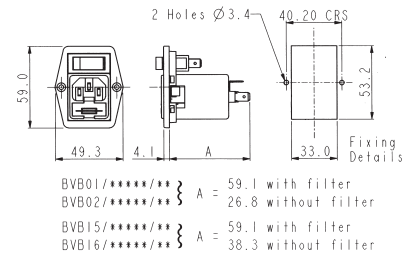


## Vertical Module Arrangement



BVB01/Z0000/01

- Fused Inlet with 2.8mm or 6.3mm tags
- Screw Fixing to Panel
- Single Pole Switch Variations
- Filtered Inlet Option
- Options of I/O marked switches



## How to order -

BV X	XX	/	XXXXX	/	XX
<b>Flange Type</b> A = Top fixing B = Side fixing	<b>Type of Inlet / Outlet</b> Single Fused C14 Power Inlet (cold condition), 6.3 or 2.8mm tabs: 01 = PF0011/63 02 = PF0011/28 Twin Fused C14 Power Inlet (cold condition), 6.3 or 2.8mm tabs: 15 = PF0033/63 16 = PF0033/28	<b>Filtered or Non Filtered Inlet</b> Z0000 = Non Filtered Axxxx = Standard For Filtered inlet use 6th to 9th characters from filter ordering code see pages 179-180 E.g. BVA01/A0620/01	<b>Combination of Other Components</b> Single Pole Switch: 01 = S.P. Switch Single Pole Neon Switch: 02 = S.P. Red Neon Switch 08 = S.P. Green Neon Switch Neon Indicator: 03 = Red Neon Indicator Single Pole High Inrush Switch: 46 = S.P. High Inrush Switch Single Pole Switch Marked I/O: 69 = S.P. Switch (I/O) Single Pole Neon Switch Marked (I/O): 71 = S.P. Red Neon Switch (I/O) 74 = S.P. Green Neon Switch (I/O) Single Pole High Inrush Switch Marked (I/O): 98 = S.P. High Inrush Switch (I/O)		

Vertical Module Arrangement



BVA01/Z0000/10

- Fused Inlet with 2.8mm or 6.3mm tags
- Screw Fixing to Panel
- Double Pole Switch Variations
- Filtered Inlet Option
- Options of I/O marked switches



BVA01/\*\*\*\*\*/\*\* } A = 60.9 with filter  
 BVA02/\*\*\*\*\*/\*\* } A = 26.8 without filter  
 BVA15/\*\*\*\*\*/\*\* } A = 60.9 with filter  
 BVA16/\*\*\*\*\*/\*\* } A = 38.3 without filter

Vertical Module Arrangement



BVB01/Z0000/11

- Fused Inlet with 2.8mm or 6.3mm tags
- Screw Fixing to Panel
- Double Pole Switch Variations
- Filtered Inlet Option
- Options of I/O marked switches



BVB01/\*\*\*\*\*/\*\* } A = 60.9 with filter  
 BVB02/\*\*\*\*\*/\*\* } A = 26.8 without filter  
 BVB15/\*\*\*\*\*/\*\* } A = 60.9 with filter  
 BVB16/\*\*\*\*\*/\*\* } A = 38.3 without filter

How to order -

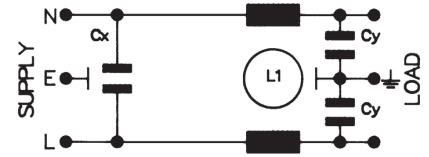
BV X	XX	/	XXXXX	/	XX
<p><b>Flange Type</b></p> <p>A = Top fixing                      B = Side fixing</p>	<p><b>Type of Inlet / Outlet</b></p> <p>Fused C14 Power Inlet (cold condition), 6.3 or 2.8mm tabs:                      01 = PF0011/63                      02 = PF0011/28</p> <p>Twin Fused C14 Power Inlet (cold condition), 6.3 or 2.8mm tabs:                      15 = PF0033/63                      16 = PF0033/28</p>	<p><b>Filtered or Non Filtered Inlet</b></p> <p>Z0000 = Non Filtered                      Axxxx = Standard</p> <p>For Filtered inlet use 6th to 9th characters from filter ordering code see pages 179-180                      E.g. BVA01/A0620/10</p>	<p><b>Combination of Other Components</b></p> <p>Neon Indicator:                      D3 = Red Neon Indicator</p> <p>Double Pole Switch:                      10 = D.P. Switch</p> <p>Double Pole Neon Switch:                      11 = D.P. Red Neon Switch                      12 = D.P. Green Neon Switch</p> <p>Double Pole High Inrush Switch:                      13 = D.P. High Inrush Switch</p> <p>Double Pole Switch Marked I/O:                      70 = D.P. Switch (I/O)</p> <p>Double Pole Neon Switch Marked (I/O):                      76 = D.P. Red Neon Switch (I/O)                      77 = D.P. Green Neon Switch (I/O)</p> <p>Double Pole High Inrush Switch Marked (I/O):                      78 = D.P. High Inrush Switch (I/O)                      B1 = D.P. High Inrush Green Neon Switch (I/O)</p>		

EMI Filter Options



BVA01/Z0000/10

- For Polysnap modules BZV03, BZV04, BZV09, BZV10, BZV17, BZV18, BZH09, BZH10, BZH17, BZH18, BZM27, BZM28
- PX0575 style IEC inlet
- Using PS01/A style filter
- Standard Attenuation Filter



How to order -

B XXXX / A XX X X / XX

Polysnap Part No.	Filter Type	Rating	L/C Circuit	Additional Components	Polysnap Part No.
From Polysnap Selection	A = Standard	01 = 1A 03 = 3A 06 = 6A 10 = 10A	1 = Version 1 2 = Version 2 3 = Version 3	0 = None	From Polysnap Selection

Rating	Version	L1	Cx	Cy
1 AMP	1	2 x 2.8mH	1 x 15nF	2 x 2.2nF
"	2	2 x 10mH	1 x 15nF	2 x 2.2nF
"	3	2 x 10mH	1 x 47nF	2 x 2.2nF
3 AMP	1	2 x 0.75mH	1 x 15nF	2 x 2.2nF
"	2	2 x 1.8mH	1 x 15nF	2 x 2.2nF
"	3	2 x 1.8mH	1 x 47nF	2 x 2.2nF
6 AMP	1	2 x 0.3mH	1 x 15nF	2 x 2.2nF
"	2	2 x 0.7mH	1 x 15nF	2 x 2.2nF
"	3	2 x 0.7mH	1 x 47nF	2 x 2.2nF
10 AMP	1	2 x 0.17mH	1 x 15nF	2 x 2.2nF
"	2	2 x 0.35mH	1 x 15nF	2 x 2.2nF
"	3	2 x 0.17mH	1 x 47nF	2 x 2.2nF

Part No. Example

[BZV03/A0120/02](#)

BZV style Polysnap module with PX0575 IEC power inlet, filter rated at 1 amp, L/C circuit version 2 (L1 = 2 x 10mH, Cx = 1 x 15nF, Cy = 2 x 2.2nF) 6.3mm tabs and single pole red neon switch.

Filter Specification

<b>Max. Working Voltage:</b>	250V a.c. 50-400Hz
<b>Earth Leakage Current:</b>	<0.35mA (250V, 50Hz)
<b>Temperature Range:</b>	-25°C to +85°C
<b>Max. Ambient Temp. (@ Full Load)</b>	40°C (derate linearly to 0A @ 85°C)
<b>Test Voltage:</b>	2700V d.c. 2 secs. Lines to Earth 1100V d.c. 2 secs. Live to Neutral

Approvals:

Attenuation Curves: See PS01/A filter, page 183

## EMI Filter Options



- For Polysnap modules BZV01, BZV02, BZH01, BZH02, BZH11, BZH12, BZH19, BZH20, BVA01, BVA02, BVB01, BVB02
- PF0011 style single fuse IEC inlet
- Using PS21/A style filter
- Standard Attenuation Filter



## How to order -

B XXXX	/	A	XX	X	X	/	XX
<b>Polysnap Part No.</b>		<b>Filter Type</b>	<b>Rating</b>	<b>L/C Circuit</b>	<b>Additional Components</b>		<b>Polysnap Part No.</b>
From Polysnap Selection		A = Standard	01 = 1A 03 = 3A 06 = 6A	2 = Version 2 3 = Version 3	0 = None		From Polysnap Selection

Rating	Version	L1	Cx	Cy
1 AMP	1			
"	2			
"	3	2 x 12mH	1 x 47nF	2 x 2.2nF
3 AMP	1			
"	2	2 x 1.8mH	1 x 15nF	2 x 2.2nF
"	3	2 x 6.5mH	1 x 47nF	2 x 2.2nF
6 AMP	1			
"	2	2 x 0.7mH	1 x 15nF	2 x 2.2nF
"	3	2 x 2mH	1 x 47nF	2 x 2.2nF
10 AMP	1			
"	2			
"	3			

## Part No. Example

BZV01/A0630/01

BZV style Polysnap module with PF0011 single fused (5 x 20mm) IEC power inlet, filter rated at 6 amp, L/C circuit version 3 (L1 = 2 x 2.0mH, Cx = 1 x 47nF, Cy = 2 x 2.2nF), 6.3mm tabs and single pole switch.

## Filter Specification

<b>Max. Working Voltage:</b>	250V a.c. 50-400Hz
<b>Earth Leakage Current:</b>	<0.35mA (250V, 50Hz)
<b>Temperature Range:</b>	-25°C to +85°C
<b>Max. Ambient Temp.:</b>	40°C (derate linearly to 0A @ 85°C)
<b>(@ Full Load)</b>	
<b>Test Voltage:</b>	2700V d.c. 2 secs. Lines to Earth 1100V d.c. 2 secs. Live to Neutral

## Approvals:



## Attenuation Curves:

See PS21/A filter, page 187

## EMI Filter Option



- For Polysnap modules BZV15, BZV16, BZH13, BZH14, BZH15, BZH16, BZH21, BZH22, BVA15, BVA16, BVB15, BVB16
- PF0033 style twin fuse IEC inlet
- Using PS26/A filter
- Standard Attenuation Filter



## How to order -

**B XXXX / A XX X X / XX**

**Polysnap Part No.**

From Polysnap Selection

**Filter Type**

A = Standard

**Rating**02 = 2A  
04 = 4A**L/C Circuit**

2 = Version 2

**Additional Components**

0 = None

**Polysnap Part No.**

From Polysnap Selection

Rating	Version	L1	Cx	Cy
1 AMP	1			
"	2			
"	3	2 x 1.8mH	1 x 15nF	2 x 2.2nF
4 AMP	1			
"	2	2 x 0.7mH	1 x 15nF	2 x 2.2nF
"	3			

**Part No. Example**[BZH13/A0420/00](#)

BZH style Polysnap module with PF0033 twin fused (5 x 20mm) IEC power inlet, filter rated at 4 amps, L/C circuit version 2 (L1 = 2 x 0.7mH, Cx = 1 x 15nF, Cy = 2 x 2.2nF) 6.3mm tabs and no additional components.

**Filter Specification**

<b>Max. Working Voltage:</b>	250V a.c. 50-400Hz
<b>Earth Leakage Current:</b>	<0.35mA (250V, 50Hz)
<b>Temperature Range:</b>	-25°C to +85°C
<b>Max. Ambient Temp.: (@ Full Load)</b>	40°C (derate linearly to 0A @ 85°C)
<b>Test Voltage:</b>	2700V d.c. 2 secs. Lines to Earth 1100V d.c. 2 secs. Live to Neutral

**Approvals:****Attenuation Curves:**

See PS26/A filter, page 189



Компания «ЭлектроПласт» предлагает заключение долгосрочных отношений при поставках импортных электронных компонентов на взаимовыгодных условиях!

Наши преимущества:

- Оперативные поставки широкого спектра электронных компонентов отечественного и импортного производства напрямую от производителей и с крупнейших мировых складов;
- Поставка более 17-ти миллионов наименований электронных компонентов;
- Поставка сложных, дефицитных, либо снятых с производства позиций;
- Оперативные сроки поставки под заказ (от 5 рабочих дней);
- Экспресс доставка в любую точку России;
- Техническая поддержка проекта, помощь в подборе аналогов, поставка прототипов;
- Система менеджмента качества сертифицирована по Международному стандарту ISO 9001;
- Лицензия ФСБ на осуществление работ с использованием сведений, составляющих государственную тайну;
- Поставка специализированных компонентов (Xilinx, Altera, Analog Devices, Intersil, Interpoint, Microsemi, Aeroflex, Peregrine, Syfer, Eurofarad, Texas Instrument, Miteq, Cobham, E2V, MA-COM, Hittite, Mini-Circuits, General Dynamics и др.);

Помимо этого, одним из направлений компании «ЭлектроПласт» является направление «Источники питания». Мы предлагаем Вам помощь Конструкторского отдела:

- Подбор оптимального решения, техническое обоснование при выборе компонента;
- Подбор аналогов;
- Консультации по применению компонента;
- Поставка образцов и прототипов;
- Техническая поддержка проекта;
- Защита от снятия компонента с производства.



#### Как с нами связаться

**Телефон:** 8 (812) 309 58 32 (многоканальный)

**Факс:** 8 (812) 320-02-42

**Электронная почта:** [org@eplast1.ru](mailto:org@eplast1.ru)

**Адрес:** 198099, г. Санкт-Петербург, ул. Калинина, дом 2, корпус 4, литера А.