

MAX17552 5V Output Evaluation Kit (TDFN)

Evaluates: MAX17552 (TDFN) in 5V Output Voltage Applications

General Description

The MAX17552 5V evaluation kit (EV kit) (TDFN) is a fully assembled and tested circuit board that demonstrates the performance of the MAX17552 60V, 100mA ultra-small, high-efficiency, synchronous step-down DC-DC converter in a 10-pin TDFN package. The EV kit operates over a wide input-voltage range of 6V to 60V and provides up to 100mA load current at 5V output. It draws only 26 μ A supply current under no-load conditions (EN/UVLO connected to V_{IN}). The EV kit is programmed to switch at a frequency of 220kHz and delivers a peak efficiency of 93% with the supplied components. The device is simple to use and easily configurable with minimal external components. It features cycle-by-cycle peak current limit protection, undervoltage lockout, and thermal shutdown.

The EV kit comes installed with the MAX17552ATB+ in an 10-pin (3mm x 3mm) lead(Pb)-free/RoHS-compliant TDFN package.

Features and Benefits

- 6V to 60V Input Voltage Range
- 5V Output, 100mA Continuous Current
- 93% Peak Efficiency
- 26 μ A No Load Supply Current
- EN/UVLO for On/Off Control and Programmable Input Undervoltage Lockout
- Programmable Switching Frequency
- Internal or Programmable Soft-Start
- PFM or Forced-PWM Mode of Operation
- Open-Drain \overline{RESET} Output
- Peak Current Limit Protection
- Thermal Shutdown
- Proven PCB Layout
- Fully Assembled and Tested

Ordering Information appears at end of data sheet.

TDFN is a registered trademark of Maxim Integrated Products, Inc.

Quick Start

Recommended Equipment

- MAX17552 5V EV kit (TDFN)
- 60V adjustable, 0.5A DC power supply
- Electronic load up to 100mA
- Voltmeter

Procedure

The EV kit is fully assembled and tested. Follow the steps below to verify board operation. **Caution: Do not turn on the power supply until all connections are completed.**

- 1) Verify that shunts are installed on jumpers JU1, JU2 (EN/UVLO).
- 2) Verify that jumper JU3 (MODE-PFM operation) is open.
- 3) Set the electronic load to constant-current mode, 100mA, and disable the electronic load.
- 4) Connect the electronic load's positive terminal to the VOUT PCB pad. Connect the negative terminal to the GND PCB pad.
- 5) Connect the voltmeter across the VOUT and GND PCB pads.
- 6) Set the power-supply output to 24V. Disable the power supply.
- 7) Connect the power-supply output to the VIN PCB pad. Connect the supply ground to the GND PCB pad.
- 8) Turn on the power supply.
- 9) Enable the electronic load and verify that output voltage is 5V with respect to GND.
- 10) Vary the input voltage from 6V to 60V.
- 11) Vary the load current from 1mA to 100mA and verify that output voltage is 5V with respect to GND.

Note: While performing an output short-circuit test, it is possible for the ceramic output capacitor to oscillate with the wiring inductance between the capacitor and short-circuited load, and thereby cause the absolute maximum rating of the V_{OUT} pin (-0.3V) to be exceeded. The resistor (R7) and the capacitor (C5) are included on this evaluation kit to protect against unintentional violation of the above mentioned rating. In the actual system design, parasitic board or wiring inductance should be minimized and the output-voltage waveform under short-circuit operation should be verified to ensure that the absolute maximum rating of the V_{OUT} pin is not exceeded.



Detailed Description

The MAX17552 5V EV kit (TDFN) is a fully assembled and tested circuit board that demonstrates the performance of the MAX17552 60V, 100mA ultra-small, high-efficiency, synchronous step-down DC-DC converter in a 10-pin TDFN package. The EV kit operates over a wide input voltage range of 6V to 60V and provides up to 100mA load current at 5V output. It draws only 26µA supply current under no-load conditions (EN/UVLO connected to VIN). The EV kit is programmed to switch at a frequency of 220kHz and delivers a peak efficiency of 93% with the supplied components. The device is simple to use and easily configurable with minimal external components. It features cycle-by-cycle peak current limit protection, undervoltage lockout, and thermal shutdown.

The EV kit includes an EN/UVLO PCB pad and jumpers JU1 and JU2 to enable control of the converter output. The MODE PCB pad and jumper JU3 are provided for selecting the mode of operation of the converter. A RESET PCB pad is available for monitoring the RESET output. The RT/SYNC PCB pad can be used to synchronize the EV kit switching frequency to an external clock frequency.

Enable Control (JU1, JU2)

The EN/UVLO pin on the EV kit serves as an on/off control while also allowing the user to program the input undervoltage lockout (UVLO) threshold. Jumpers JU1 and JU2 configure the EV kit's output for turn-on/turn-off control. See [Table 1](#) for proper JU1, JU2 jumper configurations.

Additionally, resistors R1 and R2 are included to set the UVLO to a desired turn-on voltage. Refer to the *Setting the Input Undervoltage-Lockout Level* section in the MAX17552 IC data sheet for additional information on setting the UVLO threshold voltage.

Table 1. Enable Control (EN/UVLO) (JU1, JU2)

| SHUNT POSITION | | EN/UVLO PIN | VOUT OUTPUT |
|----------------|------|--|---------------------|
| JU1 | JU2 | | |
| 1-2 | Open | Connected to VIN | Enabled |
| Open | 1-2 | Connected to GND | Disabled |
| 1-2* | 1-2 | Connected to midpoint of R1, R2 resistor-divider | Enabled at VIN ≥ 6V |

*Default position.

Table 2. MODE Control (JU3)

| SHUNT POSITION | MODE PIN | MODE OF OPERATION |
|----------------|------------------|-------------------|
| 1-2 | Connected to GND | Forced PWM |
| Open* | Unconnected | PFM |

*Default position.

RESET Output

The EV kit provides a PCB pad to monitor the status of the RESET output. RESET goes high and when the output voltage rises above 95% (typ) of its nominal regulated output voltage. RESET goes low when output voltage falls below 92% (typ) of its nominal regulated voltage.

PFM or Forced-PWM Mode (MODE)

The EV kit includes a jumper (JU3) to select the mode of operation of the converter. Install a shunt across JU3 before powering up the EV kit to enable the forced-PWM operation. Keep JU3 open to enable the light-load PFM operation. See [Table 2](#) for proper JU3 settings.

Soft-Start

The EV kit offers a fixed 5ms soft-start time. Connect the capacitor C4 to adjust the soft-start time (t_{SS}). Use the following equation to determine the soft-start capacitance value (C_{SS}).

$$C_{SS} = 6.25 \times t_{SS}$$

where t_{SS} is in milliseconds and C_{SS} is in nanofarads.

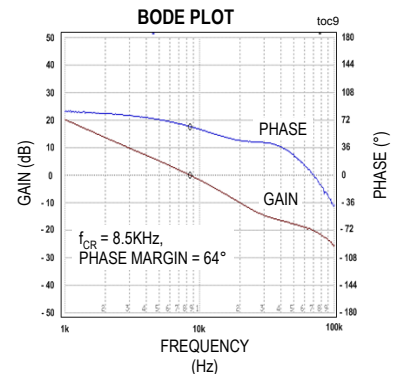
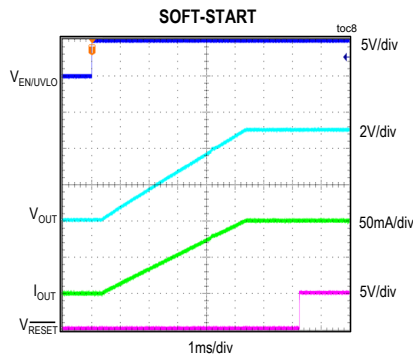
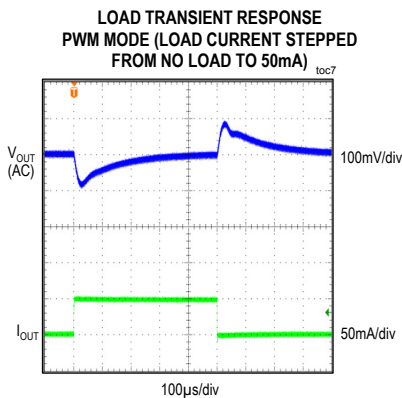
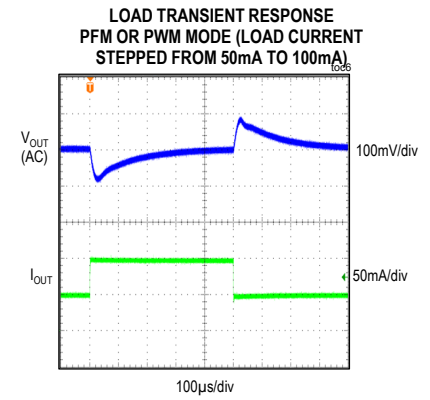
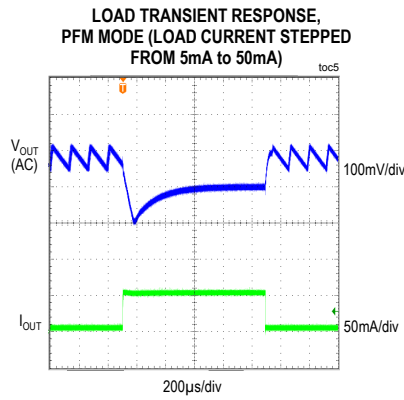
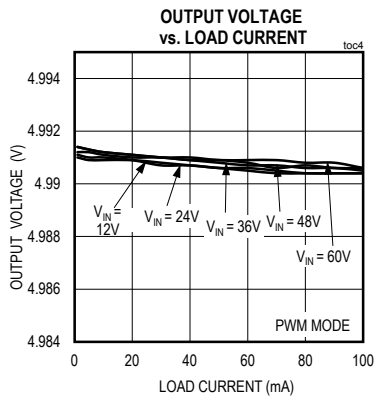
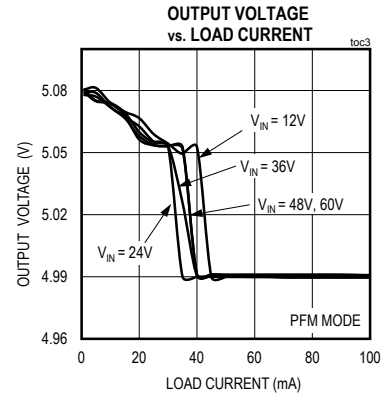
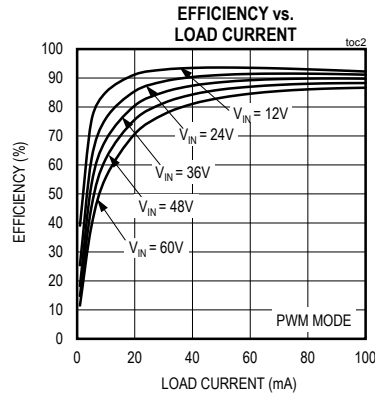
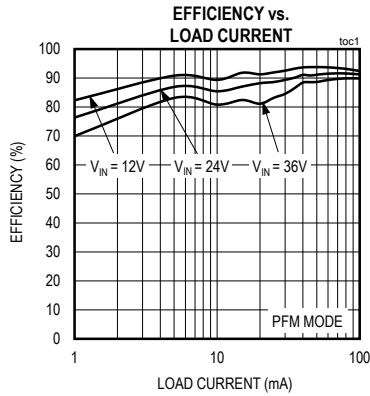
External Synchronization (RT/SYNC)

The EV kit provides a PCB pad to synchronize the EV kit switching frequency to an external clock frequency. Apply the external clock to the RT/SYNC PCB pad through an AC-coupling capacitor. Refer to the *External Synchronization* section in the MAX17552 IC data sheet for additional information on configuring the external clock and selecting the AC-coupling capacitor.

MAX17552 5V Output Evaluation Kit (TDFN)

Evaluates: MAX17552 (TDFN) in 5V Output Voltage Applications

EV Kit Performance Report



MAX17552 5V Output Evaluation Kit (TDFN)

Evaluates: MAX17552 (TDFN) in 5V Output Voltage Applications

Component List

| DESIGNATION | QTY | DESCRIPTION |
|-------------|-----|---|
| C1 | 1 | 22 μ F, 100V electrolytic capacitor (8.3mm x 8.3mm) Panasonic EEVFK2A220P |
| C2 | 1 | 1 μ F \pm 10%, 100V X7R ceramic capacitor (1206) Murata GRM31CR72A105K |
| C3 | 1 | 10 μ F \pm 10%, 6.3V X7R ceramic capacitor (1206) Murata GRM31CR70J106K |
| C4 | 0 | Not installed, ceramic capacitor |
| C5 | 1 | 0.22 μ F \pm 10%, 16V X7R ceramic capacitor (0402) Murata GRM155R71C224K |
| JU1–JU3 | 3 | 2-pin headers |
| L1 | 1 | 220 μ H, 235mA inductor Coilcraft, Inc. LPS5030-224ML |

| DESIGNATION | QTY | DESCRIPTION |
|-------------|-----|--|
| R1 | 1 | 3.01M Ω \pm 1% resistor (0402) |
| R2 | 1 | 787k Ω \pm 1% resistor (0402) |
| R3 | 1 | 191k Ω \pm 1% resistor (0402) |
| R4 | 1 | 261k Ω \pm 1% resistor (0402) |
| R5 | 1 | 49.9k Ω \pm 1% resistor (0402) |
| R6 | 1 | 100k Ω \pm 1% resistor (0402) |
| R7 | 1 | 22.1 Ω \pm 1% resistor (0402) |
| U1 | 1 | 60V, 100mA, ultra-small, high-efficiency, synchronous step-down DC-DC converter with 22 μ A no-load supply current (10 TDFN-EP*) Maxim MAX17552ATB+ |
| — | 3 | Shunts |
| — | 1 | PCB: MAX17552ATB-5V EVALUATION KIT |

Component Suppliers

| SUPPLIER | PHONE | WEBSITE |
|-----------------|--------------|------------------------|
| Coilcraft, Inc. | 847-639-6400 | www.coilcraft.com |
| Murata Americas | 770-436-1300 | www.murataamericas.com |
| Panasonic Corp. | 800-344-2112 | www.panasonic.com |

Note: Indicate that you are using the MAX17552ATB when contacting these component suppliers.

MAX17552 5V Output
Evaluation Kit (TDFN)

Evaluates: MAX17552 (TDFN) in
5V Output Voltage Applications

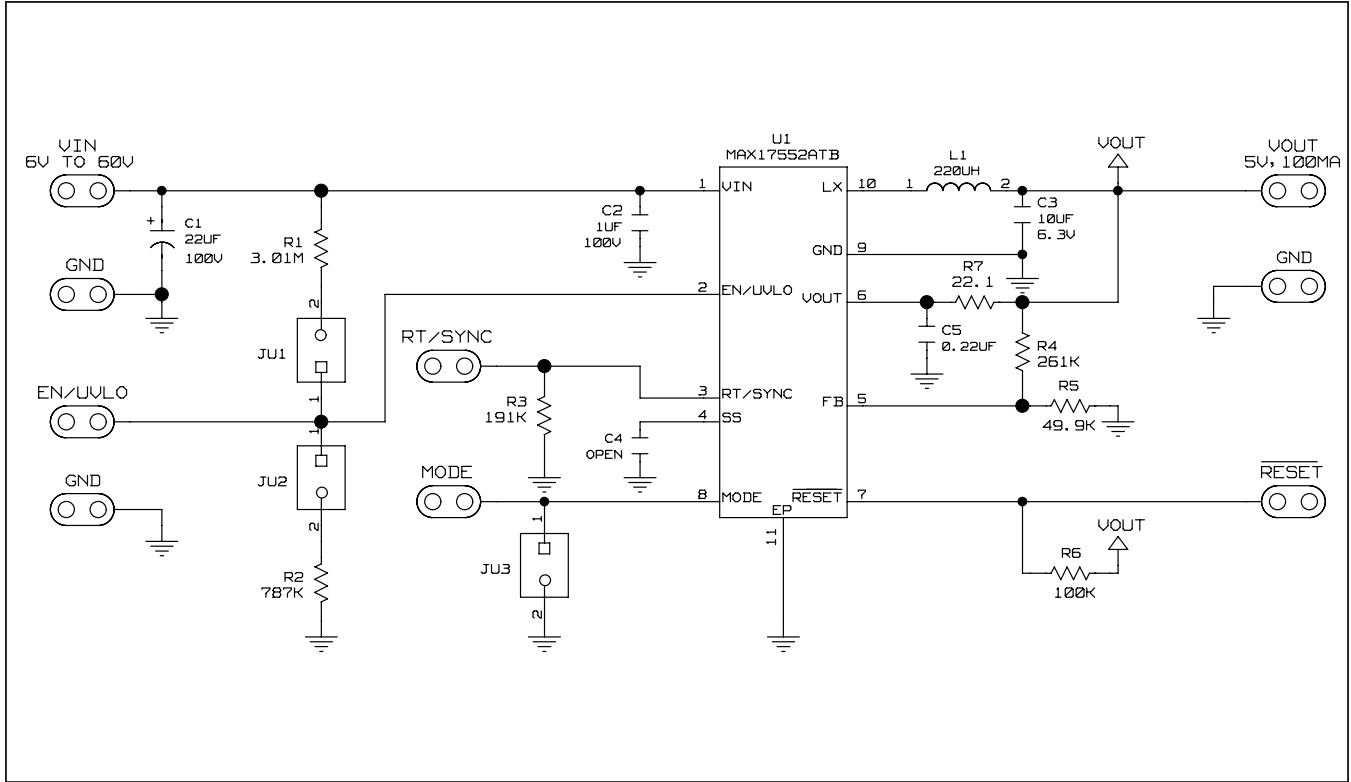


Figure 1. MAX17552 5V EV Kit (TDFN) Schematic

MAX17552 5V Output Evaluation Kit (TDFN)

Evaluates: MAX17552 (TDFN) in 5V Output Voltage Applications

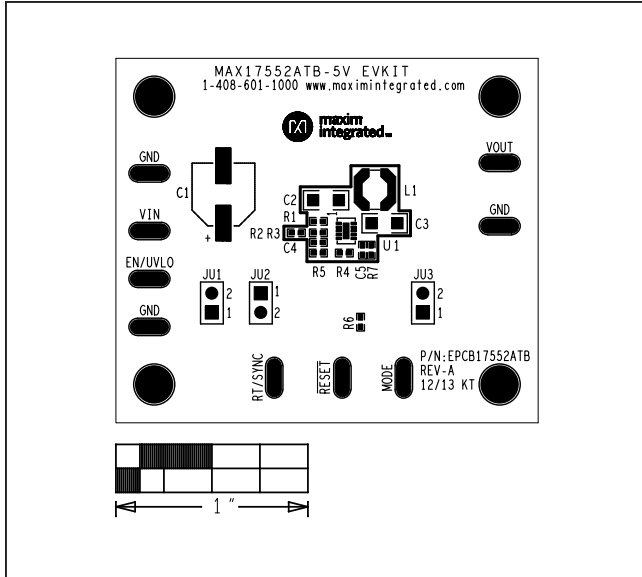


Figure 2. MAX17552 5V EV Kit (TDFN) Component Placement Guide—Component Side

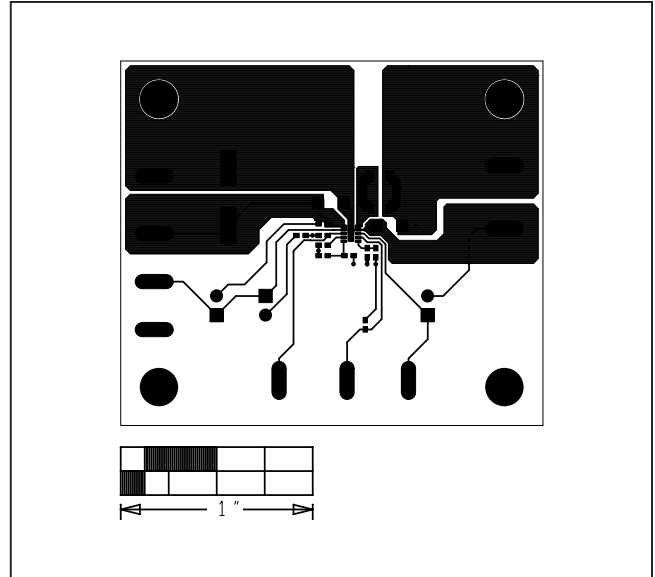


Figure 3. MAX17552 5V EV Kit (TDFN) PCB Layout—Component Side

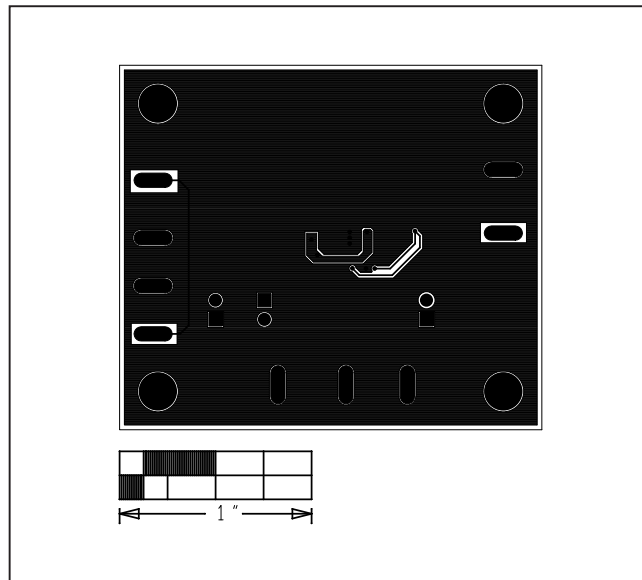


Figure 4. MAX17552 5V EV Kit (TDFN) PCB Layout—Solder Side

MAX17552 5V Output
Evaluation Kit (TDFN)

Evaluates: MAX17552 (TDFN) in
5V Output Voltage Applications

Ordering Information

| PART | TYPE |
|-------------------|--------|
| MAX17552ATBEVKIT# | EV Kit |

#Denotes RoHS compliant.

MAX17552 5V Output
Evaluation Kit (TDFN)

Evaluates: MAX17552 (TDFN) in
5V Output Voltage Applications

Revision History

| REVISION NUMBER | REVISION DATE | DESCRIPTION | PAGES CHANGED |
|-----------------|---------------|---|---------------|
| 0 | 1/14 | Initial release | — |
| 1 | 4/14 | Updated <i>Ordering Information</i> table | 7 |

For pricing, delivery, and ordering information, please contact Maxim Direct at 1-888-629-4642, or visit Maxim Integrated's website at www.maximintegrated.com.

Maxim Integrated cannot assume responsibility for use of any circuitry other than circuitry entirely embodied in a Maxim Integrated product. No circuit patent licenses are implied. Maxim Integrated reserves the right to change the circuitry and specifications without notice at any time.



Компания «ЭлектроПласт» предлагает заключение долгосрочных отношений при поставках импортных электронных компонентов на взаимовыгодных условиях!

Наши преимущества:

- Оперативные поставки широкого спектра электронных компонентов отечественного и импортного производства напрямую от производителей и с крупнейших мировых складов;
- Поставка более 17-ти миллионов наименований электронных компонентов;
- Поставка сложных, дефицитных, либо снятых с производства позиций;
- Оперативные сроки поставки под заказ (от 5 рабочих дней);
- Экспресс доставка в любую точку России;
- Техническая поддержка проекта, помощь в подборе аналогов, поставка прототипов;
- Система менеджмента качества сертифицирована по Международному стандарту ISO 9001;
- Лицензия ФСБ на осуществление работ с использованием сведений, составляющих государственную тайну;
- Поставка специализированных компонентов (Xilinx, Altera, Analog Devices, Intersil, Interpoint, Microsemi, Aeroflex, Peregrine, Syfer, Eurofarad, Texas Instrument, Miteq, Cobham, E2V, MA-COM, Hittite, Mini-Circuits, General Dynamics и др.);

Помимо этого, одним из направлений компании «ЭлектроПласт» является направление «Источники питания». Мы предлагаем Вам помощь Конструкторского отдела:

- Подбор оптимального решения, техническое обоснование при выборе компонента;
- Подбор аналогов;
- Консультации по применению компонента;
- Поставка образцов и прототипов;
- Техническая поддержка проекта;
- Защита от снятия компонента с производства.



Как с нами связаться

Телефон: 8 (812) 309 58 32 (многоканальный)

Факс: 8 (812) 320-02-42

Электронная почта: org@eplast1.ru

Адрес: 198099, г. Санкт-Петербург, ул. Калинина, дом 2, корпус 4, литера А.