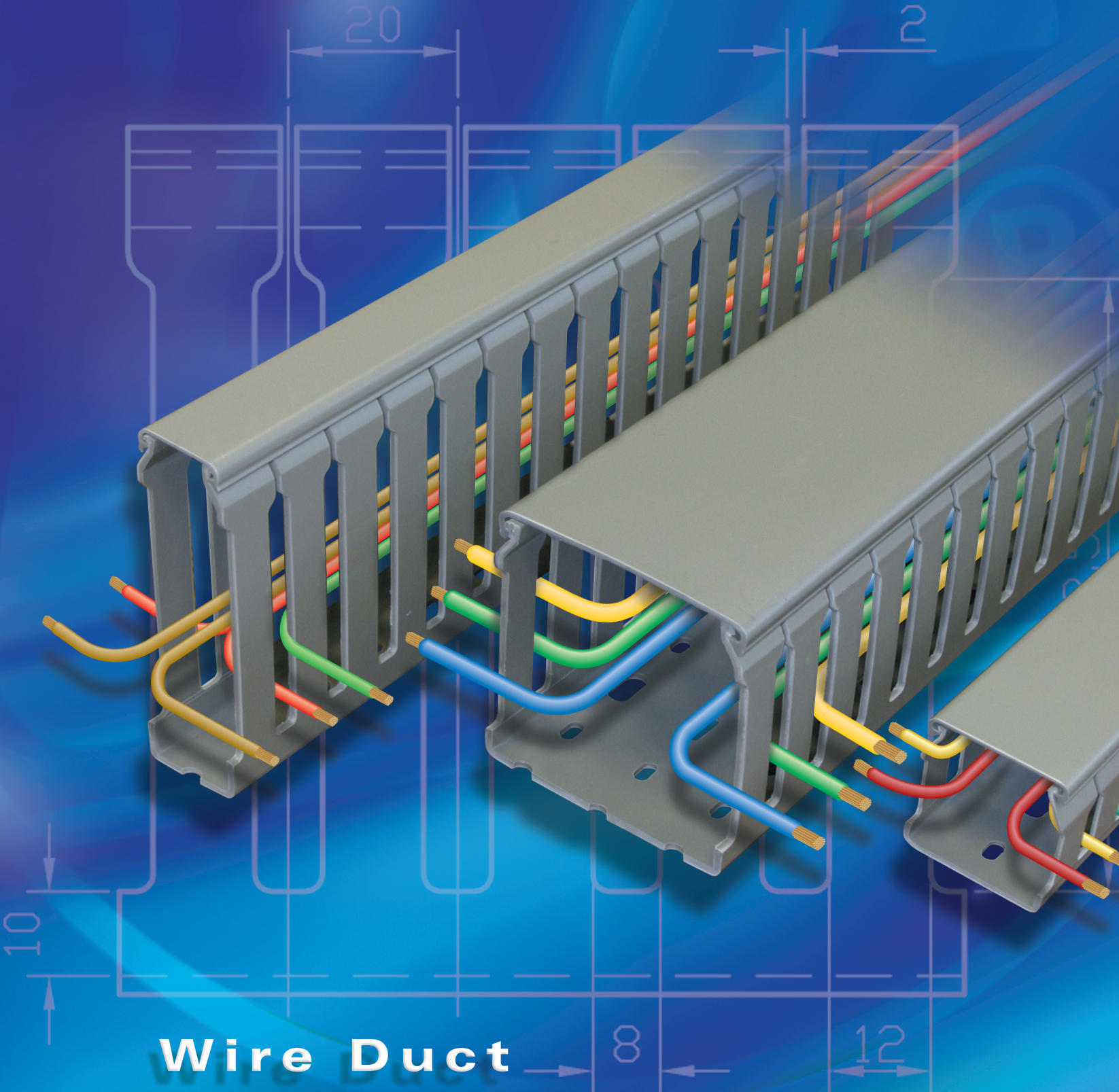


Altech Corp.®

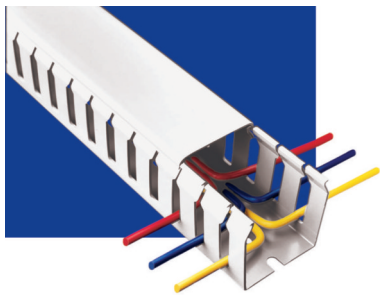
Serving the Automation & Control Industry since 1984



Quality
Endorsed
Company



Wire Duct



Standard Slot

Supplied with lid

| nominal size w x h inches | external dimensions | | part no. selection | | | | standard pack | |
|---------------------------------|----------------------|-----------------------|--------------------|---------------|----------------|----------------|-------------------------------|---------------|
| | width inches (mm) | height inches (mm) | gray PVC | white PVC | black PVC | blue PVC | no. of lengths 6 1/2' each | total feet |
| 1" x 1 1/2" | 1.14 (29) | 1.61 (41) | B25x40S-R | B25x40S/W-R | B25x40S/BL-R | – | 12 | 78 |
| 1" x 2" | 1.14 (29) | 2.13 (54) | B25x60S-R | B25x60S/W-R | B25x60S/BL-R | B25x60S/BU-R | 12 | 78 |
| 1" x 3" | 1.14 (29) | 3.11 (79) | B25x80S-R | B25x80S/W-R | B25x80S/BL-R | B25x80S/BU-R | 8 | 52 |
| 1" x 4" | 1.18 (30) | 4.13 (105) | B25x100S-R | B25x100S/W-R | B25x100S/BL-R | B25x100S/BU-R | 8 | 52 |
| 1 1/2" x 1 1/2" | 1.61 (41) | 1.61 (41) | B40x40S-R | B40x40S/W-R | B40x40S/BL-R | – | 12 | 78 |
| 1 1/2" x 2" | 1.61 (41) | 2.13 (54) | B40x60S-R | B40x60S/W-R | B40x60S/BL-R | B40x60S/BU-R | 8 | 52 |
| 1 1/2" x 3" | 1.54 (39) | 3.11 (79) | B40x80S-R | B40x80S/W-R | B40x80S/BL-R | B40x80S/BU-R | 8 | 52 |
| 1 1/2" x 4" | 1.69 (43) | 4.13 (105) | B40x100S-R | B40x100S/W-R | B40x100S/BL-R | B40x100S/BU-R | 8 | 52 |
| 2" x 1" | 2.13 (54) | 1.10 (28) | B60x25S-R | B60x25S/W-R | B60x25S/BL-R | – | 12 | 78 |
| 2" x 1 1/2" | 2.13 (54) | 1.61 (41) | B60x40S-R | B60x40S/W-R | B60x40S/BL-R | – | 8 | 52 |
| 2" x 2" | 2.13 (54) | 2.13 (54) | B60x60S-R | B60x60S/W-R | B60x60S/BL-R | B60x60S/BU-R | 8 | 52 |
| 2" x 3" | 2.17 (55) | 3.11 (79) | B60x80S-R | B60x80S/W-R | B60x80S/BL-R | B60x80S/BU-R | 8 | 52 |
| 2" x 4" | 2.20 (56) | 4.13 (105) | B60x100S-R | B60x100S/W-R | B60x100S/BL-R | – | 4 | 26 |
| 3" x 1 1/2" | 3.15 (80) | 1.61 (41) | B80x40S-R | B80x40S/W-R | B80x40S/BL-R | – | 8 | 52 |
| 3" x 2" | 3.07 (78) | 2.13 (54) | B80x60S-R | B80x60S/W-R | B80x60S/BL-R | – | 8 | 52 |
| 3" x 3" | 3.15 (80) | 3.15 (80) | B80x80S-R | B80x80S/W-R | B80x80S/BL-R | B80x80S/BU-R | 8 | 52 |
| 3" x 4" | 3.15 (80) | 4.13 (105) | B80x100S-R | B80x100S/W-R | B80x100S/BL-R | B80x100S/BU-R | 4 | 26 |
| 4" x 2" | 4.21 (107) | 2.13 (54) | B100x60S-R | B100x60S/W-R | B100x60S/BL-R | – | 4 | 26 |
| 4" x 3" | 4.21 (107) | 3.15 (80) | B100x80S-R | B100x80S/W-R | B100x80S/BL-R | B100x80S/BU-R | 4 | 26 |
| 4" x 4" | 4.21 (107) | 4.09 (104) | B100x100S-R | B100x100S/W-R | B100x100S/BL-R | B100x100S/BU-R | 4 | 26 |
| 4" x 5" | 4.21 (107) | 5.12 (130) | B100x130S-R | B100x130S/W-R | B100x130S/BL-R | – | 4 | 26 |
| 5" x 3" | 5.16 (131) | 3.07 (78) | B130x80S-R | B130x80S/W-R | B130x80S/BL-R | – | 4 | 26 |

MATERIAL

self extinguishing PVC

SERVICE TEMPERATURE

+5° F to +140° F (-15° C to +60° C)

STANDARDS

base slots to DIN 43659

STANDARD COLORS

gray, white, black & blue

FLAMMABILITY

UL94 V-O rated material



Serving the Automation & Control Industry Since 1984

Altech Corp® • 908.806.9400 • 908.806.9490 (fax) • www.altechcorp.com



Thin Slot

Supplied with lid

| nominal size w x h inches | external dimensions | | part no. selection | | | carton quantity | |
|---------------------------------|----------------------|-----------------------|--------------------|---------------|----------------|-------------------------------|---------------|
| | width inches (mm) | height inches (mm) | gray PVC | white PVC | black PVC | no. of lengths 6 1/2' each | total feet |
| 1" x 1 1/2" | 1.14 (29) | 1.61(41) | B25x40T-R | B25x40T/W-R | B25x40T/BL-R | 12 | 78 |
| 1" x 2" | 1.14 (29) | 2.13 (54) | B25x60T-R | B25x60T/W-R | B25x60T/BL-R | 12 | 78 |
| 1" x 3" | 1.14 (29) | 3.11 (79) | B25x80T-R | B25x80T/W-R | B25x80T/BL-R | 8 | 52 |
| 1" x 4" | 1.18 (30) | 4.13 (105) | B25x100T-R | B25x100T/W-R | B25x100T/BL-R | 8 | 52 |
| 1 1/2" x 1 1/2" | 1.61 (41) | 1.61 (41) | B40x40T-R | B40x40T/W-R | B40x40T/BL-R | 12 | 78 |
| 1 1/2" x 2" | 1.61 (41) | 2.13 (54) | B40x60T-R | B40x60T/W-R | B40x60T/BL-R | 8 | 52 |
| 1 1/2" x 3" | 1.61 (41) | 3.11 (79) | B40x80T-R | B40x80T/W-R | B40x80T/BL-R | 8 | 52 |
| 1 1/2" x 4" | 1.69 (43) | 4.13 (105) | B40x100T-R | B40x100T/W-R | B40x100T/BL-R | 8 | 52 |
| 2" x 1 1/2" | 2.20 (56) | 1.61 (41) | B60x40T-R | B60x40T/W-R | B60x40T/BL-R | 8 | 52 |
| 2" x 2" | 2.13 (54) | 2.13 (54) | B60x60T-R | B60x60T/W-R | B60x60T/BL-R | 8 | 52 |
| 2" x 3" | 2.17 (55) | 3.11 (79) | B60x80T-R | B60x80T/W-R | B60x80T/BL-R | 8 | 52 |
| 2" x 4" | 2.20 (56) | 4.13 (105) | B60x100T-R | B60x100T/W-R | B60x100T/BL-R | 4 | 26 |
| 3" x 1 1/2" | 3.15 (80) | 1.61 (41) | B80x40T-R | B80x40T/W-R | B80x40T/BL-R | 8 | 52 |
| 3" x 2" | 3.07 (78) | 2.13 (54) | B80x60T-R | B80x60T/W-R | B80x60T/BL-R | 8 | 52 |
| 3" x 3" | 3.15 (80) | 3.15 (80) | B80x80T-R | B80x80T/W-R | B80x80T/BL-R | 8 | 52 |
| 3" x 4" | 3.15 (80) | 4.13 (105) | B80x100T-R | B80x100T/W-R | B80x100T/BL-R | 4 | 26 |
| 4" x 2" | 4.21 (107) | 2.13 (54) | B100x60T-R | B100x60T/W-R | B100x60T/BL-R | 4 | 26 |
| 4" x 3" | 4.21 (107) | 3.15 (80) | B100x80T-R | B100x80T/W-R | B100x80T/BL-R | 4 | 26 |
| 4" x 4" | 4.21 (107) | 4.09 (104) | B100x100T-R | B100x100T/W-R | B100x100T/BL-R | 4 | 26 |

MATERIAL

self extinguishing PVC

SERVICE TEMPERATURE

+5° F to +140° F (-15° C to +60° C)

STANDARDS

base slots to DIN 43659

STANDARD COLORS

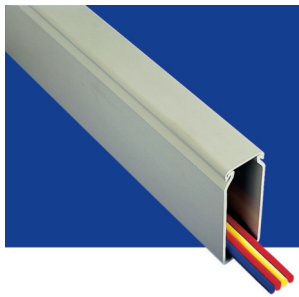
gray, white & black

FLAMMABILITY

UL94 V-O rated material



ISO9001:2000 Certified



Unslotted Wall

Supplied with lid

| nominal size w x h inches | external dimensions | | part no. selection | | | carton quantity | |
|---------------------------------|----------------------|-----------------------|--------------------|----------------|-----------------|-------------------------------|---------------|
| | width inches (mm) | height inches (mm) | gray PVC | white PVC | black PVC | no. of lengths 6 1/2' each | total feet |
| 1" x 1 1/2" | 1.14 (29) | 1.61 (41) | B25x40US-R | B25x40US/W-R | B25x40US/BL-R | 12 | 78 |
| 1" x 2" | 1.14 (29) | 2.13 (54) | B25x60US-R | B25x60US/W-R | B25x60US/BL-R | 12 | 78 |
| 1" x 3" | 1.14 (29) | 3.11 (79) | B25x80US-R | B25x80US/W-R | B25x80US/BL-R | 8 | 52 |
| 1" x 4" | 1.18 (30) | 4.13 (105) | B25x100US-R | B25x100US/W-R | B25x100US/BL-R | 8 | 52 |
| 1 1/2" x 1 1/2" | 1.61 (41) | 1.61 (41) | B40x40US-R | B40x40US/W-R | B40x40US/BL-R | 12 | 78 |
| 1 1/2" x 2" | 1.61 (41) | 2.13 (54) | B40x60US-R | B40x60US/W-R | B40x60US/BL-R | 8 | 52 |
| 1 1/2" x 3" | 1.54 (39) | 3.11 (79) | B40x80US-R | B40x80US/W-R | B40x80US/BL-R | 8 | 52 |
| 1 1/2" x 4" | 1.69 (43) | 4.13 (105) | B40x100US-R | B40x100US/W-R | B40x100US/BL-R | 8 | 52 |
| 2" x 1" | 2.13 (54) | 1.10 (28) | B60x25US-R | B60x25US/W-R | B60x25US/BL-R | 12 | 78 |
| 2" x 1 1/2" | 2.13 (54) | 1.61 (41) | B60x40US-R | B60x40US/W-R | B60x40US/BL-R | 8 | 52 |
| 2" x 2" | 2.13 (54) | 2.13 (54) | B60x60US-R | B60x60US/W-R | B60x60US/BL-R | 8 | 52 |
| 2" x 3" | 2.17 (55) | 3.11 (79) | B60x80US-R | B60x80US/W-R | B60x80US/BL-R | 8 | 52 |
| 2" x 4" | 2.20 (56) | 4.13 (105) | B60x100US-R | B60x100US/W-R | B60x100US/BL-R | 4 | 26 |
| 3" x 1 1/2" | 3.15 (80) | 1.61 (41) | B80x40US-R | B80x40US/W-R | B80x40US/BL-R | 8 | 52 |
| 3" x 2" | 3.07 (78) | 2.13 (54) | B80x60US-R | B80x60US/W-R | B80x60US/BL-R | 8 | 52 |
| 3" x 3" | 3.15 (80) | 3.15 (80) | B80x80US-R | B80x80US/W-R | B80x80US/BL-R | 8 | 52 |
| 3" x 4" | 3.15 (80) | 4.13 (105) | B80x100US-R | B80x100US/W-R | B80x100US/BL-R | 4 | 26 |
| 4" x 2" | 4.21 (107) | 2.13 (54) | B100x60US-R | B100x60US/W-R | B100x60US/BL-R | 4 | 26 |
| 4" x 3" | 4.21 (107) | 3.15 (80) | B100x80US-R | B100x80US/W-R | B100x80US/BL-R | 4 | 26 |
| 4" x 4" | 4.21 (107) | 4.09 (104) | B100x100US-R | B100x100US/W-R | B100x100US/BL-R | 4 | 26 |
| 4" x 5" | 4.21 (107) | 5.12 (130) | B100x130US-R | B100x130US/W-R | B100x130US/BL-R | 4 | 26 |
| 5" x 3" | 5.16 (131) | 3.07 (78) | B130x80US-R | B130x80US/W-R | B130x80US/BL-R | 4 | 26 |

MATERIAL

self extinguishing PVC

SERVICE TEMPERATURE

+5° F to +140° F (-15° C to +60° C)

STANDARDS

base slots to DIN 43659

STANDARD COLORS

gray, white & black

FLAMMABILITY

UL94 V-O rated material



A Leading Supplier For Over Twenty Years

Altech Corp[®] • 908.806.9400 • 908.806.9490 (fax) • www.altechcorp.com

Product Features

The Panel building market has very specific needs. This unique cable management system developed specifically for use within cabinets and control panels. Select Standard, Thin, Closed Slot and Unslotted depending on the application. Available in a number of sizes and colors, manufactured in standard PVC material.

CABLE RETENTION

Wiring duct design allows cables to be retained during installation, making routing and cable termination a simple process

LID RETENTION

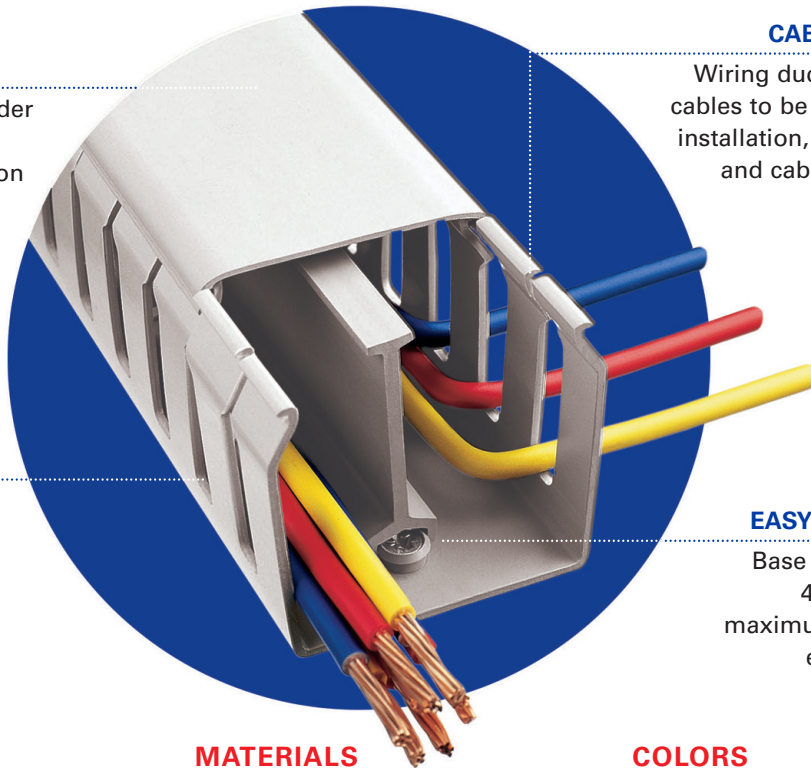
Friction bead on wider trunking provides excellent lid retention to combat vibration

BREAK-OUT

Fingers can be removed easily without the use of cutting tools

EASY INSTALLATION

Base slots are to DIN 43659, providing maximum flexibility for easy installation



SIZE RANGE

- Wide range of sizes to cater to a broad spectrum of requirements
- New larger sizes with narrower profiles to reduce panel footprint

MATERIALS

- The standard range is manufactured using self extinguishing PVC

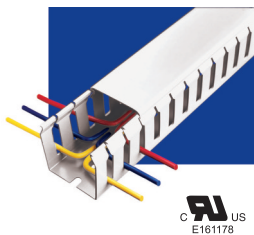
COLORS

- Gray, white and black are standard
- Blue is offered for intrinsically safe wiring applications
- Other colors available

Standard Wiring Duct

PVC provides a lightweight self extinguishing wiring duct with excellent rigidity and performance characteristics.

Standard Slot



- Wide fingers giving additional cable support
- Terminated wires can be re-routed easily
- 0.79" slot pitch
- 0.31" slot width
- 22 sizes, available in gray, white, black or blue

Unslotted



- Ideal where no break-outs are required or side wall access is infrequent
- Complete cable protection
- 22 sizes, in either gray, white or black

Thin Slot



- Ideal for use with slimmer terminal blocks where more access is required
- Improves appearance of panels with cables out in best position
- 0.39" slot pitch
- 0.16" slot width
- 19 sizes in a choice of gray, white or black

Serving the Automation & Control Industry Since 1984

Altech Corp® • 908.806.9400 • 908.806.9490 (fax) • www.altechcorp.com

Altech Corp.®

Quality
Endorsed
Company



ISO 9001:2008
CERTIFICATE



Altech Search
Google™ Custom Search

- Home
- Stock Check
- Distributors
- Information
- News
- Contact
- Rep/Dist Login
- Altech Mexico

WEB TOOLS

- Product Crossings
- Request for Quote
- Sample Request
- Catalog Request

PRODUCT MENU

- Circuit Protection / Control >
- Connectors >
- Enclosures >
- European Spare Parts >
- Foot Switches
- Interface Modules >
- Power Supplies
- Push Buttons & Pilot Lights >
- Relays >
- Sensors >
- Terminal Blocks >
- Tower Lights
- Wire & Cable Management >
- Home

New Products and Promotions

Serving the Automation & Control Industry Since 1984

Circuit Protection

| | | | | |
|--|---|--|---|--|
|  Circuit Protection Devices |  Busbar and Power Distribution |  Contactors, Overload Relays, Manual Motor Starters |  Motor Disconnect Switches |  European Fuses |
|--|---|--|---|--|

Connectors

| | | |
|---|--|---|
|  Industrial Rectangular Connectors |  Pin & Sleeve Devices |  Receptacles |
|---|--|---|

Foot Switches

| |
|---|
|  Foot Switches |
|---|

Sensors

| |
|---|
|  Inductive Proximity Sensors |
|---|

Enclosures

| | |
|---|--|
|  Industrial Enclosures |  DIN Enclosures |
|---|--|

Modules & Relays

| | | |
|---|---|---|
|  Interface Modules |  Safety Relays |  Slimline Relays |
|---|---|---|

Power Supplies

| |
|--|
|  Power Supplies |
|--|

Push Buttons

| |
|---|
|  22 & 30 mm Push Buttons |
|---|

DIN Rail

| |
|--|
|  DIN Rail |
|--|

Wire & Cable Management

| | |
|--|---|
|  Liquid Tight Strain Reliefs/Corrugated Tubes |  Wire Duct |
|--|---|

Terminal Blocks

| | | | | |
|--|---|---|--|---|
|  Din Rail Terminal Blocks |  Panel Mount Terminal Blocks |  Printed Circuit Board Terminal Blocks |  Eurostrips |  Distribution Blocks |
|--|---|---|--|---|

Miscellaneous

| | | | | |
|--|---|---|---|--|
|  Ferrules |  Custom Assembly |  Marking & Engraving Systems |  Power Semi-conductors |  European Spare Parts |
|--|---|---|---|--|

Altech Corporation
35 Royal Road
Flemington, NJ 08822-6000
P 908.806.9400 • F 908.806.9490
www.altechcorp.com

Altech Corp.® 555B-052013-5M
Printed July 2013





Компания «ЭлектроПласт» предлагает заключение долгосрочных отношений при поставках импортных электронных компонентов на взаимовыгодных условиях!

Наши преимущества:

- Оперативные поставки широкого спектра электронных компонентов отечественного и импортного производства напрямую от производителей и с крупнейших мировых складов;
- Поставка более 17-ти миллионов наименований электронных компонентов;
- Поставка сложных, дефицитных, либо снятых с производства позиций;
- Оперативные сроки поставки под заказ (от 5 рабочих дней);
- Экспресс доставка в любую точку России;
- Техническая поддержка проекта, помощь в подборе аналогов, поставка прототипов;
- Система менеджмента качества сертифицирована по Международному стандарту ISO 9001;
- Лицензия ФСБ на осуществление работ с использованием сведений, составляющих государственную тайну;
- Поставка специализированных компонентов (Xilinx, Altera, Analog Devices, Intersil, Interpoint, Microsemi, Aeroflex, Peregrine, Syfer, Eurofarad, Texas Instrument, Miteq, Cobham, E2V, MA-COM, Hittite, Mini-Circuits, General Dynamics и др.);

Помимо этого, одним из направлений компании «ЭлектроПласт» является направление «Источники питания». Мы предлагаем Вам помощь Конструкторского отдела:

- Подбор оптимального решения, техническое обоснование при выборе компонента;
- Подбор аналогов;
- Консультации по применению компонента;
- Поставка образцов и прототипов;
- Техническая поддержка проекта;
- Защита от снятия компонента с производства.



Как с нами связаться

Телефон: 8 (812) 309 58 32 (многоканальный)

Факс: 8 (812) 320-02-42

Электронная почта: org@eplast1.ru

Адрес: 198099, г. Санкт-Петербург, ул. Калинина, дом 2, корпус 4, литера А.