

REVISIONS				
SYM	ZONE	ECN, ERN NO.	DATE	APPRD.
C		PROPOSAL	APR16/10	Z.L.

THIS IS A CAD DRAWING. DO NOT MANUALLY REVISE.

AMPHENOL PART NUMBER CONFIGURATION:

U65 - X XX - X X 7 XXX

INFINITY  
RECEPTACLE

STYLE

B = R/A SMT, 2 LOCATION  
AND 4 SOLDERING POSTS  
E = R/A SMT, 2 LOCATION  
AND 4 SCREW MOUNT HOLES

CONNECTOR TYPE

04 = 4X  
12 = 12X

PLATING

1 = 50μ" GOLD  
2 = 30μ" GOLD  
3 = GOLD FLASH OVER  
PALLADIUM-NICKEL (LEAD FREE)  
4 = 50μ" GOLD (RoHS COMPLIANT)  
5 = 30μ" GOLD (RoHS COMPLIANT)  
B = 50μ" GOLD (RoHS COMPLIANT)  
C = 30μ" GOLD (RoHS COMPLIANT)

OPTION

0= 2 PIECE LOCKING PLATE (SHIPPED LOOSE)  
1= ONE PIECE LOCKING PLATE (SHIPPED LOOSE)  
2= NO LOCKING PLATE

PACKAGING/SPECIAL

NO DIGIT = TRAY PACKAGING  
NO REAR COVER  
C = TRAY PACKAGING  
WITH REAR COVER (SHIPPED LOOSE)  
T = TAPE & REEL PACKAGING  
NO REAR COVER  
CT = TAPE & REEL PACKAGING  
WITH REAR COVER (SHIPPED LOOSE)

KEYING OPTION

0 = NO KEYING (STD)

MOUNTING STYLE

LANYARD LATCH (WITH TOP MOUNTING EAR)

1. MATERIAL:

PLASTIC HOUSING:

HIGH TEMPERATURE RESISTANT NYLON, FLAMMABILITY RATING UL94V-0.

CONTACTS:

PHOSPHOR BRONZE

PLATING OPTION 1 OR 2 (50μ" OR 30μ" GOLD): 50μ" [1.27 μm] OR 30μ" [0.76 μm] MIN. GOLD OVER 50μ" [1.27 μm] MIN. NICKEL ON CONTACT MATING SURFACES. 150μ" [3.81 μm] MIN. TIN-LEAD (90/10) OVER 50μ" [1.27 μm] NICKEL ON CONTACT TAILS.

PLATING OPTION 3 (GOLD FLASH OVER PALLADIUM-NICKEL): 2μ" [0.05 μm] MIN. GOLD OVER 25μ" [0.635 μm] MIN. PALLADIUM-NICKEL ON CONTACT MATING SURFACES. 0.3μ" [0.007 μm] MIN. GOLD OVER 1.2μ" [0.03 μm] MIN. PALLADIUM-NICKEL ON CONTACT TAILS. 50μ" [1.27 μm] MIN. NICKEL UNDER PLATING.

PLATING OPTION 4 OR 5 (RoHS) (50μ" OR 30μ" GOLD): 50μ" [1.27 μm] OR 30μ" [0.76 μm] MIN. GOLD OVER 50μ" [1.27 μm] MIN. NICKEL ON CONTACT MATING SURFACES. 2μ" [0.05 μm] MIN. GOLD OVER 50μ" [1.27 μm] MIN. NICKEL ON CONTACT TAILS.

PLATING OPTION B OR C (RoHS) (50μ" OR 30μ" GOLD): 50μ" [1.27 μm] OR 30μ" [0.76 μm] MIN. GOLD OVER 50μ" [1.27 μm] MIN. NICKEL ON CONTACT MATING SURFACES. 100-150μ" [2.54-3.81 μm] MATTE TIN OVER 50μ" [1.27 μm] MIN. NICKEL ON CONTACT TAILS.

METAL SHELL: DIE CASTING ALLOY

PLATING: 100μ" [2.54 μm] MIN. NICKEL OVER COPPER UNDER LAYER

GASKET: STAINLESS STEEL

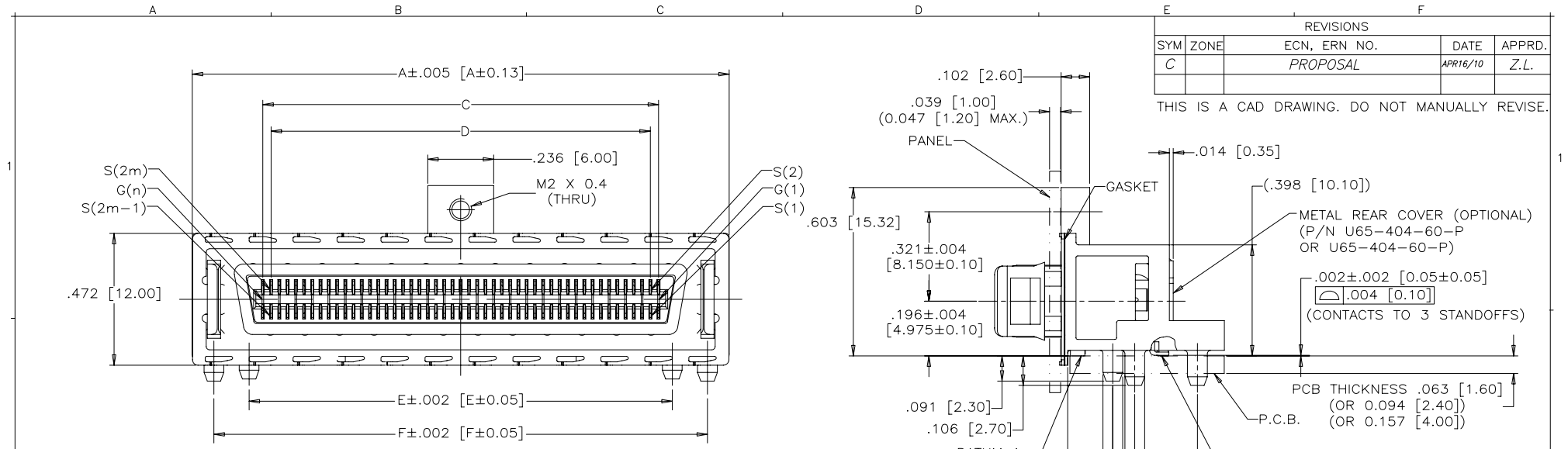
LOCKING PLATE: STAINLESS STEEL

2. TEMPERATURE RANGE:

-40°C TO +85°C

THIS DOCUMENT CONTAINS PROPRIETARY INFORMATION AND SUCH INFORMATION MAY NOT BE DISCLOSED TO OTHERS FOR ANY PURPOSE OR USED FOR MANUFACTURING PURPOSES WITHOUT WRITTEN PERMISSION FROM AMPHENOL CANADA CORP.

DRAWN	L.DENG	DATE	2005/01/07	Amphenol Canada Corp.	
DESIGNED					
CHECKED	J.SI	DATE	2005/01/07		
I. E. APPRD.					
Q. A. APPRD.				TITLE INFINITY 4X/12X RECEPTACLE, LANYARD LATCH FIXED BOARD, RIGHT ANGLE SMT WITH TOP MOUNTING EAR	
DWG. APPRD.					
ENG. REL. NO.		DWG	A	DRAWING NO.	P-U65-XXX-XX7XXX
REF.	EAR# 12571/12614			REV.	C
DIMENSIONS ARE IN	CODE ID. NO.	SCALE	2/1	WT.	-----
INCHES [mm]	03554	SURF.	-----	SHEET	1 OF 4



REVISIONS				
SYM	ZONE	ECN, ERN NO.	DATE	APPRD.
C		PROPOSAL	APR16/10	Z.L.

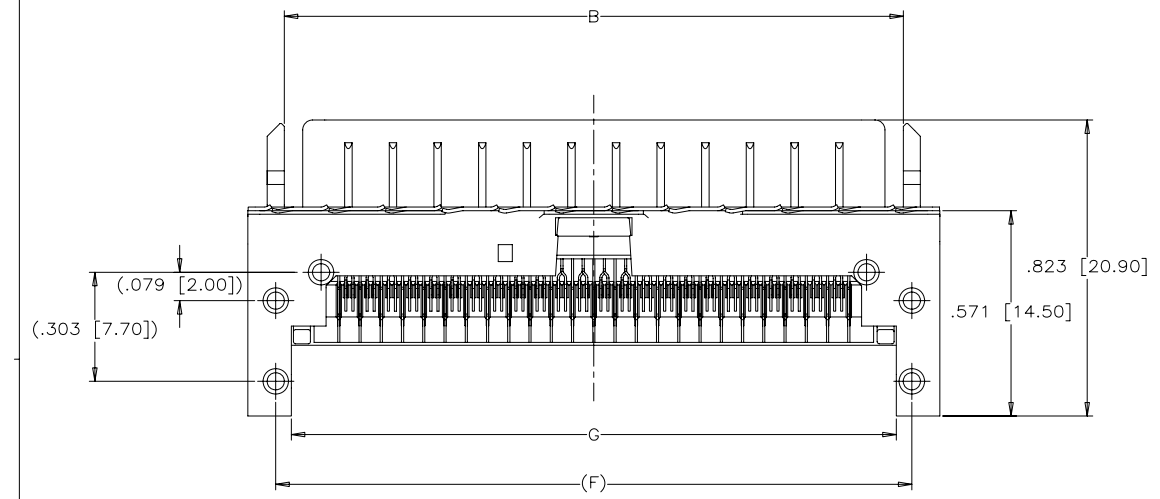
U65-BXX-XX7XXX  
(LOCK PLATE REMOVED)

U65-BXX-XX7XXX  
(SOLDER POST)

DIMENSION TABLE:

PART NUMBER	U65-X04-XX7XXX	U65-X12-XX7XXX
A	.978 [24.85]	1.923 [48.85]
B	.776 [19.70]	1.720 [43.70]
C	.472 [12.00]	1.417 [36.00]
D	.413 [10.50]	1.358 [34.50]
E	.571 [14.50]	1.516 [38.50]
F	.823 [20.90]	1.768 [44.90]
G	.736 [18.70]	1.681 [42.70]
H	.894 [22.70]	1.839 [46.70]
K	.776 [19.70]	1.720 [43.70]
m	m = 1 - 8	m = 1 - 24
n	n = 1 - 9	n = 1 - 25

\*\* REFER TO [mm] AS PRIMARY DIMENSIONS.



U65-BXX-XX7XXX  
(LOCK PLATE REMOVED)

DRAWN	L.DENG	DATE	2005/01/07
DESIGNED			
CHECKED	J.SI	DATE	2005/01/07
I. E. APPRD.			
Q. A. APPRD.			
DWG. APPRD.			
ENG. REL. NO.			
REF.	EAR# 12571/12614		
DIMENSIONS ARE IN	INCHES [mm]	CODE ID. NO.	03554

Amphenol Canada Corp.

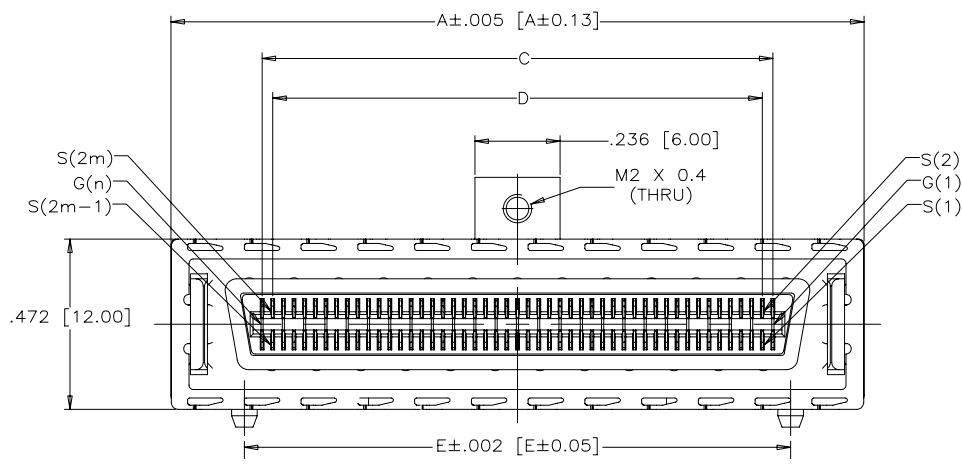
TITLE INFINITY 4X/12X RECEPTACLE, LANYARD LATCH  
FIXED BOARD, RIGHT ANGLE SMT  
WITH TOP MOUNTING EAR

DWG	A	DRAWING NO.	P-U65-XXX-XX7XXX	REV.	C
SCALE	2/1	WT.	-----	SURF.	-----
			SHEET 2	OF 4	

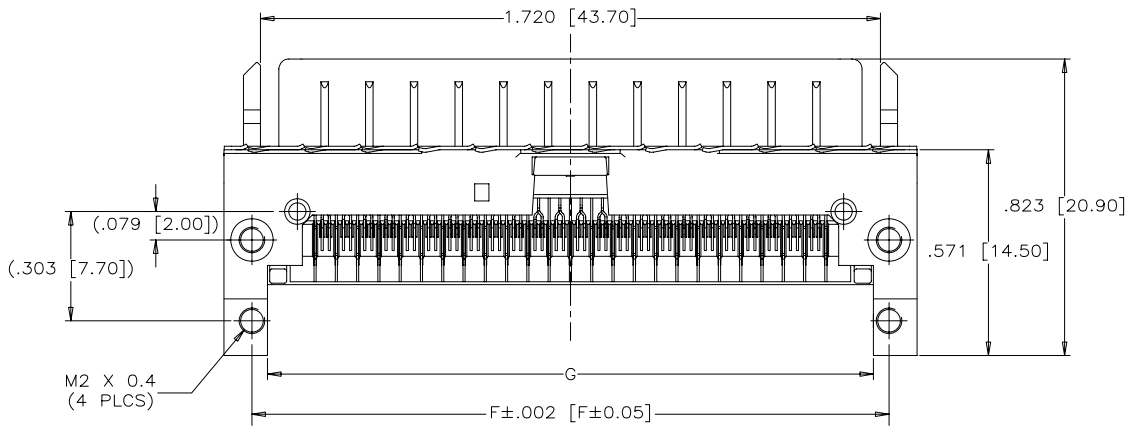
THIS DOCUMENT CONTAINS PROPRIETARY INFORMATION AND SUCH INFORMATION  
MAY NOT BE DISCLOSED TO OTHERS FOR ANY PURPOSE OR USED FOR MANUFACTURING  
PURPOSES WITHOUT WRITTEN PERMISSION FROM AMPHENOL CANADA CORP.

REVISIONS			
SYM	ZONE	ECN, ERN NO.	DATE
C		PROPOSAL	APR16/10
			Z.L.

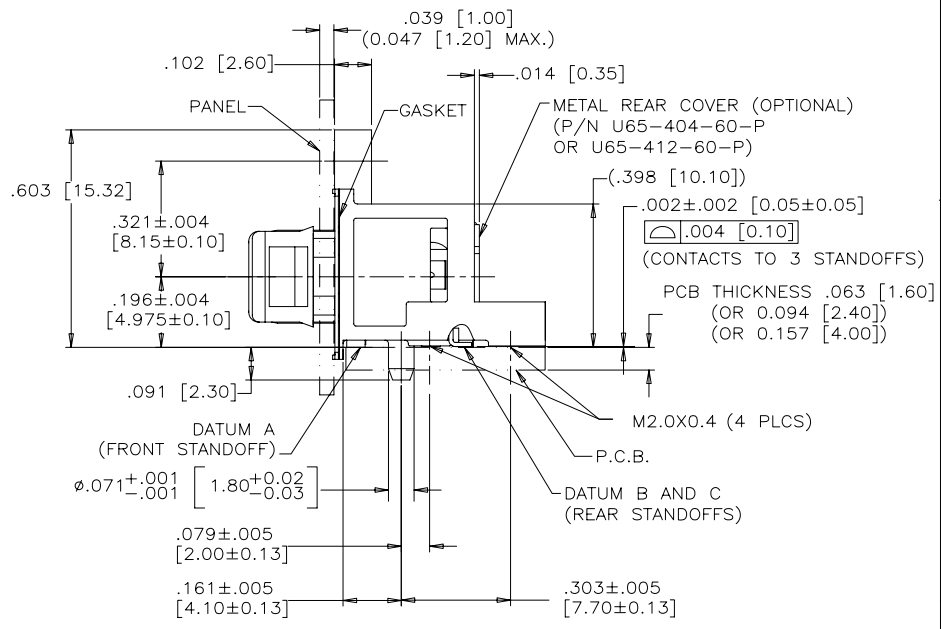
THIS IS A CAD DRAWING. DO NOT MANUALLY REVISE.



U65-EXX-XX7XXX  
(LOCK PLATE REMOVED)



U65-EXX-XX7XXX  
(LOCK PLATE REMOVED)



U65-EXX-XX7XXX  
(SCREW MOUNT)

\*\* REFER TO [mm] AS PRIMARY DIMENSIONS.

THIS DOCUMENT CONTAINS PROPRIETARY INFORMATION AND SUCH INFORMATION MAY NOT BE DISCLOSED TO OTHERS FOR ANY PURPOSE OR USED FOR MANUFACTURING PURPOSES WITHOUT WRITTEN PERMISSION FROM AMPHENOL CANADA CORP.

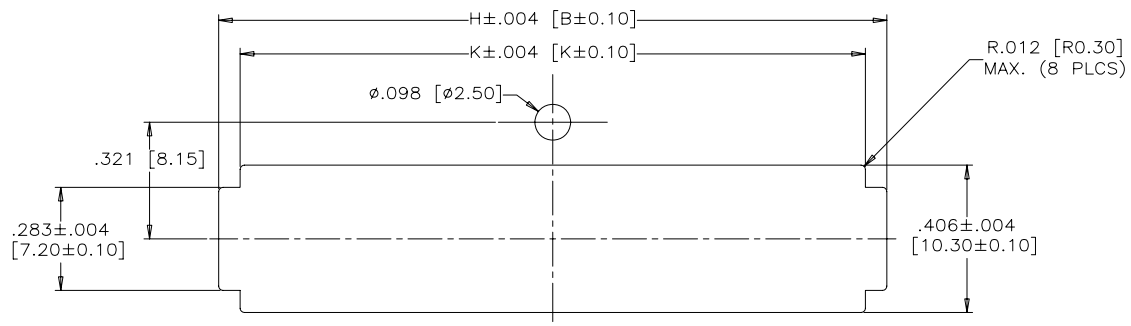
DRAWN	L.DENG	DATE	2005/01/07
DESIGNED			
CHECKED	J.SI	DATE	2005/01/07
I. E. APPRD.			
Q. A. APPRD.			
DWG. APPRD.			
ENG. REL. NO.			
REF.	EAR# 12571/12614		
DIMENSIONS ARE IN	CODE ID. NO.		
INCHES [mm]	03554		

Amphenol Canada Corp.	
TITLE INFINITY 4X/12X RECEPTACLE, LANYARD LATCH FIXED BOARD, RIGHT ANGLE SMT WITH TOP MOUNTING EAR	
DWG. A	DRAWING NO. P-U65-XXX-XX7XXX
SCALE 2/1	WT. ----- SURF. ----- SHEET 3 OF 4

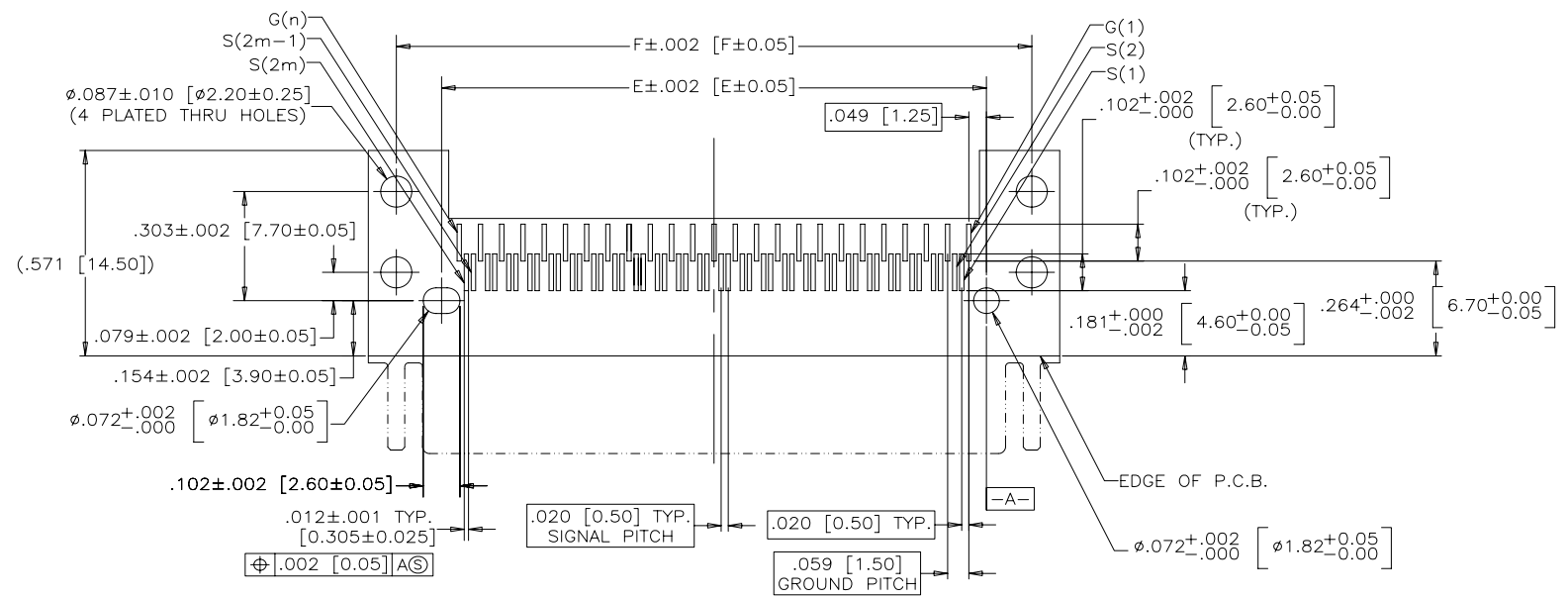
A B C D E F

REVISIONS				
SYM	ZONE	ECN, ERN NO.	DATE	APPRD.
C		PROPOSAL	APR16/10	Z.L.

THIS IS A CAD DRAWING. DO NOT MANUALLY REVISE.



RECOMMENDED PANEL CUTOUT



RECOMMENDED P.C.B. LAYOUT  
(COMPONENTS SIDE OF BOARD)

\*\* REFER TO [mm] AS PRIMARY DIMENSIONS.

THIS DOCUMENT CONTAINS PROPRIETARY INFORMATION AND SUCH INFORMATION MAY NOT BE DISCLOSED TO OTHERS FOR ANY PURPOSE OR USED FOR MANUFACTURING PURPOSES WITHOUT WRITTEN PERMISSION FROM AMPHENOL CANADA CORP.

DRAWN	L.DENG	DATE	2005/01/07	<b>Amphenol Canada Corp.</b> TITLE INFINITY 4X/12X RECEPTACLE, LANYARD LATCH FIXED BOARD, RIGHT ANGLE SMT WITH TOP MOUNTING EAR	
DESIGNED					
CHECKED	J.SI	DATE	2005/01/07		
I. E. APPRD.					
Q. A. APPRD.					
DWG. APPRD.				DWG	DRAWING NO.
ENG. REL. NO.				A	P-U65-XXX-XX7XXX
REF.	EAR# 12571/12614				REV.
DIMENSIONS ARE IN	CODE ID. NO				C
INCHES [mm]	03554			SCALE	2/1
				WT.	-----
				SURF.	-----
				SHEET	4 OF 4



Компания «ЭлектроПласт» предлагает заключение долгосрочных отношений при поставках импортных электронных компонентов на взаимовыгодных условиях!

Наши преимущества:

- Оперативные поставки широкого спектра электронных компонентов отечественного и импортного производства напрямую от производителей и с крупнейших мировых складов;
- Поставка более 17-ти миллионов наименований электронных компонентов;
- Поставка сложных, дефицитных, либо снятых с производства позиций;
- Оперативные сроки поставки под заказ (от 5 рабочих дней);
- Экспресс доставка в любую точку России;
- Техническая поддержка проекта, помощь в подборе аналогов, поставка прототипов;
- Система менеджмента качества сертифицирована по Международному стандарту ISO 9001;
- Лицензия ФСБ на осуществление работ с использованием сведений, составляющих государственную тайну;
- Поставка специализированных компонентов (Xilinx, Altera, Analog Devices, Intersil, Interpoint, Microsemi, Aeroflex, Peregrine, Syfer, Eurofarad, Texas Instrument, Miteq, Cobham, E2V, MA-COM, Hittite, Mini-Circuits, General Dynamics и др.);

Помимо этого, одним из направлений компании «ЭлектроПласт» является направление «Источники питания». Мы предлагаем Вам помощь Конструкторского отдела:

- Подбор оптимального решения, техническое обоснование при выборе компонента;
- Подбор аналогов;
- Консультации по применению компонента;
- Поставка образцов и прототипов;
- Техническая поддержка проекта;
- Защита от снятия компонента с производства.



#### Как с нами связаться

**Телефон:** 8 (812) 309 58 32 (многоканальный)

**Факс:** 8 (812) 320-02-42

**Электронная почта:** [org@eplast1.ru](mailto:org@eplast1.ru)

**Адрес:** 198099, г. Санкт-Петербург, ул. Калинина, дом 2, корпус 4, литера А.