



FEATURES

- Efficiency up to 90.0% @72Vin 12Vout
- Ultra wide input range, 16.8V-137.5V
- 14.4V/1S, 200V/1S transient voltage
- Package with Industry Standard Pinout
- Package Dimension: 63.1mm*60.6mm*13mm(2.49"*2.39"*0.51")
- OUTPUT OVP,OCP(hiccup) OTP(auto recovery)
- Positive or Negative Remote ON/OFF
- Without tantalum capacitor inside module
- Operating Base plate Temperature range - 40°C to +100°C
- 4242VDC input to output reinforced isolation
- Unit operation monitor PIN option
- A fixed frequency pulse PIN option
- Hold up time PIN option
- UVLO set up PIN option
- RoHs Compliant
- 5 Years Product Warranty
- Heat-sink is option
- Meet requirements of EN50155
- UL60950-1, 2nd Edition (pending)

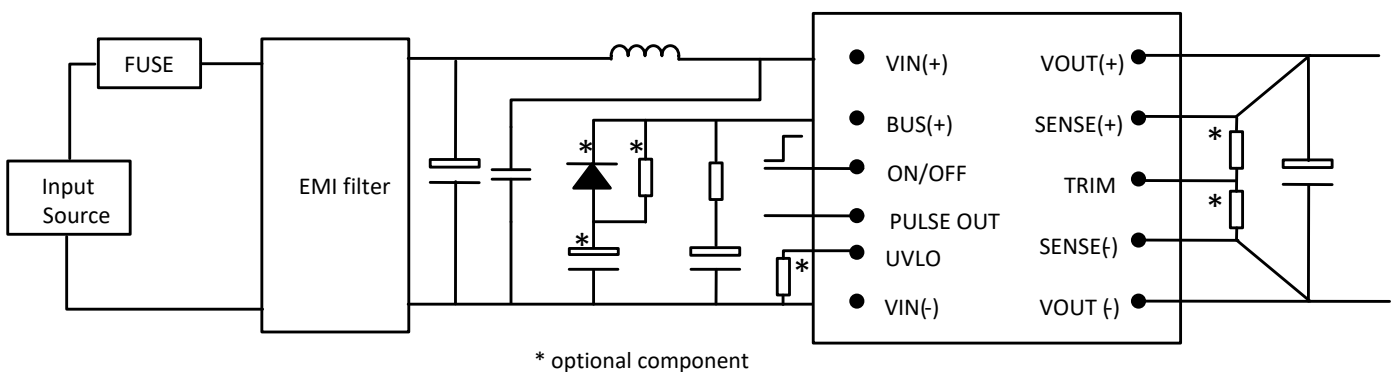
Delphi Series H80SV, Half Brick Family DC/DC Power Modules: 16.8~137.5 Vin, 54/48/24/15/12Vout,200W

The H80SV series Half-Brick is isolated 100W DC/DC converters with 4242VDC isolation. The H80SV family comes with a host of industry-standard features, such as over current protection, over voltage protection, over temperature protection and remote on/off. All models have an ultra-wide 8:1 input voltage range (16.8V to 137.5V). With operating temperature of -40°C to +85°C, it is suitable for customers' critical applications, such as process control and automation, transportation, data communication and telecom equipment, test equipment, medical device and everywhere where space on the PCB is critical.

APPLICATIONS

- Railway /Transportation system

SIMPLIFIED APPLICATION CIRCUIT



TECHNICAL SPECIFICATION

| PARAMETER | NOTES and CONDITIONS | H80SV12008 | | | |
|--|---|------------|--------|--------|-----------------------|
| | | Min. | Typ. | Max. | Units |
| 1. ABSOLUTE MAXIMUM RATINGS | | | | | |
| 1.1 Input Voltage | Non-operating | | | 200 | Vdc |
| 1.2 Operating Temperature | Ambient temperature | -40 | | 85 | °C |
| | Baseplate temperature | -40 | | 100 | °C |
| 1.3 Storage Temperature | | -40 | | 125 | °C |
| 1.4 Operating Altitude | | | | 5000 | m |
| 1.5 Operating Humidity | | 5 | | 95 | %rh |
| 2. INPUT CHARACTERISTICS | | | | | |
| 2.1 Operating Input Voltage | continuously | 16.8 | 72 | 137.5 | Vdc |
| | <1s | | | 200 | Vdc |
| 2.2 Input Under-Voltage Lockout | UVLO external resistor open | | | | |
| 2.2.1 Turn-On Voltage Threshold | | 15.6 | 16.0 | 16.4 | Vdc |
| 2.2.2 Turn-Off Voltage Threshold | | 13.6 | 14.0 | 14.4 | Vdc |
| 2.3 Maximum Input Current | Full Load, Vin=16.8V | | 7 | 7.5 | A |
| 2.4 No-Load Input Current | Vin=72, Io=0A | 30 | 60 | 90 | mA |
| 2.6 Off Converter Input Current | Vin=72V | | | 30 | mA |
| 3. OUTPUT CHARACTERISTICS | | | | | |
| 3.1 Output Voltage Set Point | Vin=72V, Io=0, Tc=25°C | 11.88 | 12.00 | 12.12 | Vdc |
| 3.1.1 Load regulation | Vin=72V, Io=Io min to Io max | | ±0.05 | ±0.2 | % |
| 3.1.2 Line regulation | Vin=16.8V to 137.5V, Io=full load | | ±0.01 | ±0.2 | % |
| 3.1.3 Temperature regulation | Vin=72V, Tc= min to max case temperature | | ±0.004 | ±0.007 | %/°C |
| 3.1.4 Total output voltage range | Over sample, line, load, temperature, life | -2.5 | | +2.5 | % |
| 3.2 Output Voltage Ripple and Noise | 5Hz to 20MHz bandwidth | | | | |
| 3.2.1 Peak-to-Peak | Vin=72V, Full Load, | | 30 | | mV |
| 3.2.2 rms | Vin=72V, Full Load, | | 8 | | mV |
| 3.3 Operating Output Current Range | | | | 8 | A |
| 3.4 Output DC Current-Limit Inception | | 10 | | 24 | A |
| 4. DYNAMIC CHARACTERISTICS | | | | | |
| 4.1 Output Voltage Current Transient | Vin=72V, 0.1A/μs | | | | |
| 4.1.1 Positive Step Change in Output Current | 50% Io,max to 75% | | 280 | | mV |
| 4.1.2 Negative Step Change in Output Current | 75% Io,max to 50% | | 280 | | mV |
| 4.2 Turn-On Transient | | | | | |
| 4.2.1 Start-Up Time, From On/Off Control | | 200 | | 460 | ms |
| 4.2.2 Start-Up Time, From Input | | 200 | | 460 | ms |
| 4.2.3 Rise time (Vout from 10% to 90%) | | | | 100 | ms |
| 4.4 output capacitor | | | | 2200 | μF |
| 5. EFFICIENCY | | | | | |
| 5.1 100% Load | Vin=72V | | 90.0 | | % |
| 5.2 60% Load | Vin=72V | | 87.0 | | % |
| 6. ISOLATION CHARACTERISTICS | | | | | |
| 6.1 Input to Output | | | | 4242 | Vdc |
| 6.2 Input to base | | | | 4242 | Vdc |
| 6.3 Output to base | | | | 4242 | Vdc |
| 6.4 Isolation Resistance | | 10 | | | MΩ |
| 7. FEATURE CHARACTERISTICS | | | | | |
| 7.1 Switching Frequency | | | 140 | | kHz |
| 7.2 ON/OFF Control | Positive or Negative logic optional | | | | |
| 7.2.1 Positive Remote On/Off Logic | ON/OFF pin floating, module ON | | | | |
| 7.2.1.1 Logic High (Module On) | | 3 | | 5 | V |
| 7.2.1.2 Logic Low (Module Off) | | 0 | | 0.4 | V |
| 7.2.2 Negative Remote On/Off Logic | ON/OFF pin floating, module OFF | | | | |
| 7.2.2.1 Logic Low (Module On) | | 0 | | 0.4 | V |
| 7.2.2.2 Logic High (Module Off) | | 3 | | 5 | V |
| 7.3 Output Voltage Trim Range | | -20 | | 10 | % |
| 7.4 Output Over-Voltage Protection | Over full temp range; % of nominal Vout | 110 | 120 | 130 | % |
| 8 GENERAL SPECIFICATIONS | | | | | |
| 8.1 MTBF | | | 1.48 | | 10 ⁶ hours |
| 8.2 Weight | With heat spreader | | 125 | | grams |
| 8.3 Over-Temperature Shutdown (NTC resistor) | | | 125 | | °C |
| 8.4 Over-Temperature Shutdown Restart Hysteresis | | | 6 | | °C |
| 8.5 Thermal Impedance | Vin=24V, full load, component to baseplate | | 0.77 | | K/W |
| | Vin=48V, full load, component to baseplate | | 0.85 | | K/W |
| | Vin=72V, full load, component to baseplate | | 0.99 | | K/W |
| | Vin=110V, full load, component to baseplate | | 1.05 | | K/W |

ELECTRICAL CHARACTERISTICS CURVES

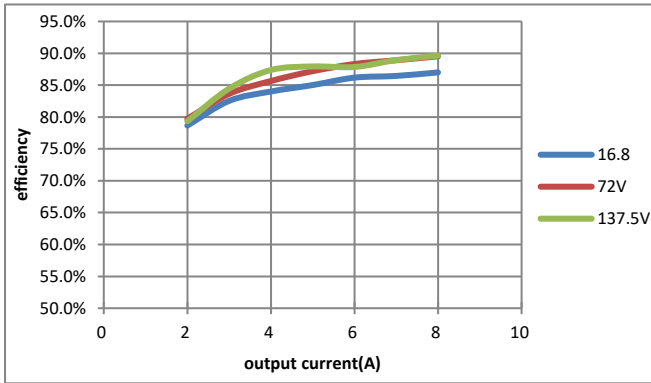


Figure 1: Efficiency vs. load current for 16.8, 72V and 137.5V input voltage at 25°C.

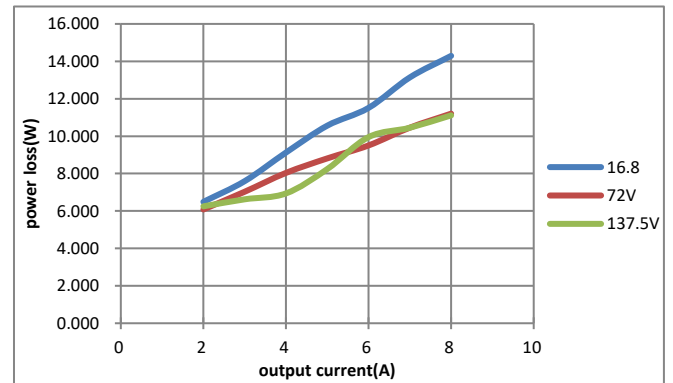


Figure 2: Efficiency vs. load current for 16.8, 72V and 137.5V input voltage at 25°C.

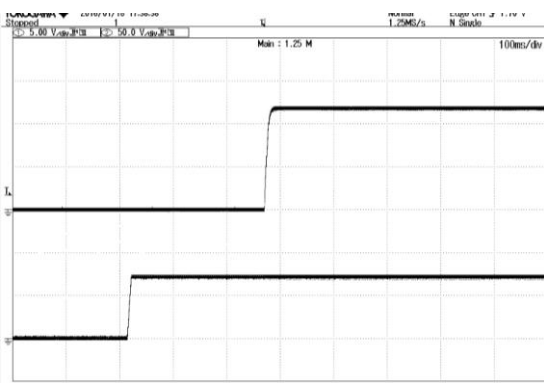


Figure 3: Turn-on transient at full load current (100ms/div). Top Trace: Vout: 5V/div; Bottom Trace: Vin: 50V/div

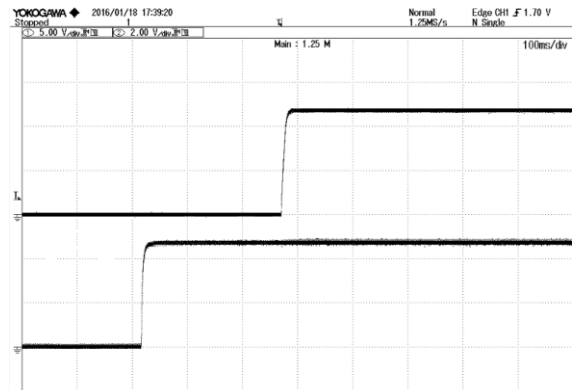


Figure 4: Turn-on transient at full load current (100ms/div). Top Trace: Vout: 5V/div; Bottom Trace: ON/OFF: 2V/div

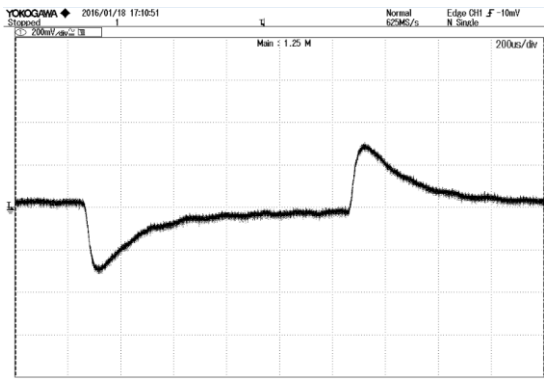


Figure 5: Output voltage response to step-change in load current (50%-75%-50% of full load; $di/dt = 0.1A/\mu s$).

Trace: Vout; 200mV/div; Time: 200us/div

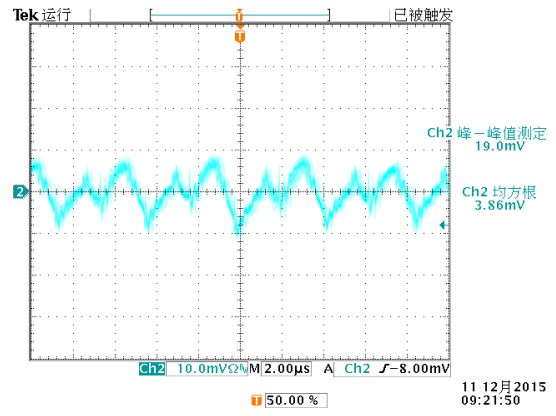


Figure 6: Output voltage ripple at Vin=72V and full load (20mV/div, 2us/div) Bandwidth: 20 MHz.

FEATURE DESCRIPTION

Over-Current Protection

The modules include an internal output over-current protection circuit, which will endure current limiting for an unlimited duration during output overload. If the output current exceeds the OCP set point, the module will shut down, and always try to restart (hiccup mode) until the over current condition is corrected.

Over-Voltage Protection

The modules include an internal output over-voltage protection circuit, which monitors the voltage on the output terminals. If this voltage exceeds the over-voltage set point, the module will shut down, and always try to restart until the over current condition is corrected.

Over-Temperature Protection

The over-temperature protection consists of circuitry that provides protection from thermal damage. If the over-temperature is detected the module will shut down, and restart after the temperature is within specification.

Remote ON/OFF

The remote on/off feature on the module can be either negative or positive logic. Negative logic turns the module on during logic low and off during logic high. Positive logic turns the modules on during logic high and off during a logic low.

Remote on/off can be controlled by an external switch between the on/off terminal and the Vin (-) terminal. The switch can be an open collector or open drain. For negative logic if the remote on/off feature is not used, please short the on/off pin to Vin (-). For positive logic if the remote on/off feature is not used, please leave the on/off pin to floating.

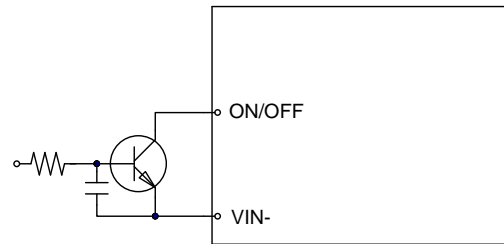


Figure 7 : Remote ON/OFF Implementation

PULSE OUT

This pin outputs a 1KHz 50% duty cycle pulse voltage with 12V amplitude. It is designed to provide a bootstrap signal for the input inrush current limit circuit, and also could indicate operating status with a LED connected. if you don't need it, please let it open.

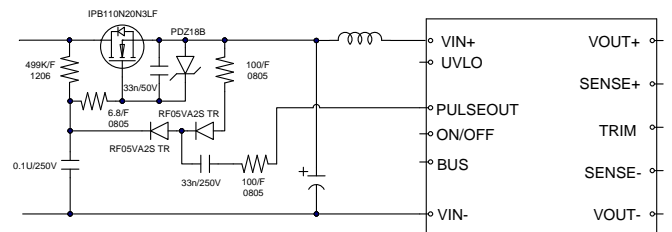


Figure 8: An Active Circuit Design For Inrush Current Limit

UVLO.

H80SV Series converters have an under voltage lockout feature that will shut down the converter if the input voltage falls below the adjustable threshold. Devices will automatically restart when input voltage rises above the UVLO threshold. The hysteresis built into this function prevents an indeterminate on/off condition at a single input voltage. The under voltage threshold is determined by the value of a resistor placed between the UVLO and VIN (-). Figure 9 shows a typical configuration.

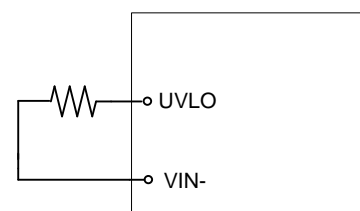


Figure 9: Under voltage Lockout Configuration

The table below shows UVLO values for various nominal input voltages and the required resistor.

| Nominal Vin | 24V | | 36V | 48V | 72V | 96V | 110V |
|------------------------------|----------------|-----------|-------|-------|------|------|------|
| Turn-off Threshold | 12.0±0.4V | 14.0±0.4V | 21.2 | 28.4 | 42.8 | 57.2 | 65.6 |
| | | | ±0.4V | ±0.4V | ±1V | ±1V | ±2V |
| Turn-on Threshold | 14.0±0.4V | 16.0±0.4V | 24.5 | 33.6 | 50.4 | 67.6 | 76.8 |
| | | | ±0.4V | ±0.4V | ±1V | ±1V | ±2V |
| UVLO External Resistor (KΩ)* | 2.2Meg | open | 24.9 | 12.4 | 6.19 | 4.12 | 3.48 |
| | (UVLO to Vin+) | | | | | | |

Note: if need to configure UVLO turn off threshold to 12V, please make sure the output power is no more than 120w, even though the 12V operating is short duration.

Otherwise the input current maybe over spec and cause some issue.

Hold up time

Hold up time is defined as the duration of time that the DC/DC converter output will remain active following a loss of input power. The BUS+ pin is for hold-up time function. It is designed to work with an external circuit comprises C4, R4, D1. When input power supply is interrupt, the H80 DCDC use the energy stored in C4 to support operation. A typical configuration shows as Figure 10.

R4: 100ohm,KNP100JT-73100R/YAGEO

D1: 200V/3A,

If hold-up time function is not needed, just leave the 3 components open.

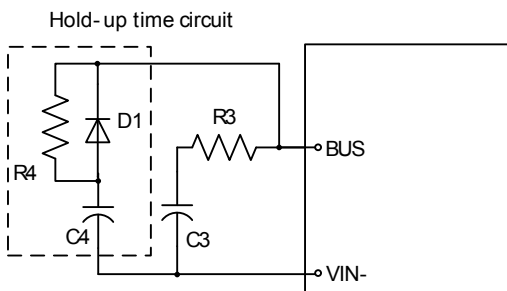


Figure 10: Connection of External Hold-up Circuit

This function provides energy that maintains the DC-DC converter in operation for 10mS of hold up

time. The capacity in the application is recommended as below.

| Vin / Capacitance | 24V | 36V | 48V | 72V | 96V | 110V |
|-------------------|--------|--------|--------|--------|--------|--------|
| For 10 mS | 2400uF | 2400uF | 2400uF | 2400uF | 820uF | 560uF |
| For 30 mS | 7200uF | 7200uF | 7200uF | 7200uF | 2460uF | 1680uF |

The voltage BUS+ varies with input voltage and the relationship is showed in figure11. The red curve, BUS(+) keeps stable at 80V(80V~90V) when input voltage rise from 16.8V to 75V, when the input voltage is above 75V, then BUS(+) follows input voltage. The blue one, BUS(+) falls with input voltage until the input voltage falls to 72V(72V~80V), then BUS(+) will maintain 80V until input voltage falls below the UVLO.

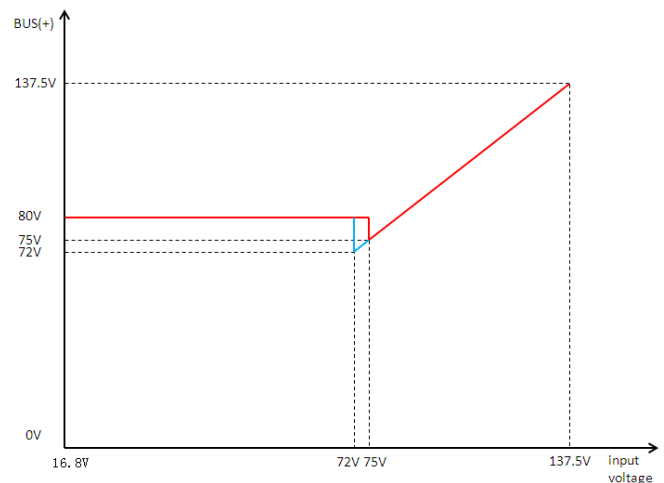


Figure 11: BUS(+) VS Input Voltage

Note: for the rated voltage of capacitor please refer to the BUS+ voltage curve showed in figure 11.

Output Voltage Adjustment (TRIM)

To increase or decrease the output voltage set point, connect an external resistor between the TRIM pin and SENSE (+) pin or SENSE (-) pin. The TRIM pin should be left open if this feature is not used.

For trim down, the external resistor value required to obtain a percentage of output voltage change Δ is

defined as:

$$R_{trim-down} = \left[\frac{5.11}{\Delta} - 10.22 \right] (k\Omega)$$

Ex. When Trim-down -10% (12V×0.9=10.8V)

$$R_{trim-down} = \left[\frac{5.11}{10\%} - 10.22 \right] (k\Omega) = 40.88 (k\Omega)$$

For trim up, the external resistor value required to obtain a percentage output voltage change Δ is defined as:

$$R_{trim-up} = \left[\frac{45}{\Delta} + 40 \right] k\Omega$$

Ex. When Trim-up +10% (12V×110%=13.2V)

$$R_{trim-up} = \left[\frac{45}{10\%} + 40 \right] = 490 (k\Omega)$$

DESIGN CONSIDERATIONS

Input Source Impedance

C1:1UF MLCC or film cap, placed as close to module as possible

C2:100UF ALCAP

L1:3.3uH inductor, depress the ripple current flow into C2

For better EMC performance, it is recommended that C2 be parallel connected with MLCC 1UF like C3

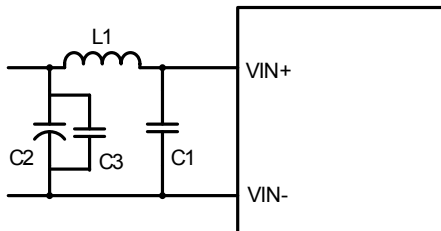


Figure 12 input filter design

Bus Cap and Resistor

An electrolytic cap (C3) at least 200uF and a resistor (R3) 3ohm connected between bus+ and Vin- is necessary. The cap provides/absorb transient power and make the DCDC operating stable. The series resistor R3 is recommended to depress the high frequency ripple current flow into C3.

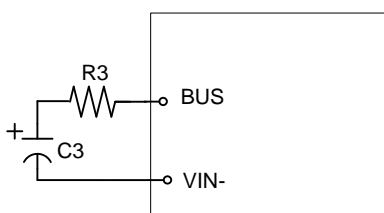


Figure 13 BUS pin circuit

Safety Considerations

The power module must be installed in compliance with the spacing and separation requirements of the end-user's safety agency standard, i.e., UL 60950-1, 2nd Edition, 2014-10-14, CSA C22.2 No. 60950-1-07, 2nd Edition, 2014-10, IEC 60950-1: 2005 + A1: 2009 + A2: 2013 and EN 60950-1: 2006 + A11: 2009 + A1: 2010 + A12: 2011 + A2: 2013, if the system in which the power module is to be used must meet safety agency requirements.

Reinforced insulation is provided between the input and output of the module. Input is considered as secondary hazardous voltage which main transient is up to 1500Vpk and output is considered as SELV circuit. The input source must be insulated from the ac mains by reinforced or double insulation. The input terminals of the module are not considered as operator accessible.

A SELV reliability test may require when install on the system where the module is used, in combination with the module, to ensure that under a single fault, hazardous voltage does not appear at the module's output.

Soldering and Cleaning Considerations

Post solder cleaning is usually the final board assembly process before the board or system undergoes electrical testing. Inadequate cleaning and/or drying may lower the reliability of a power module and severely affect the finished circuit board assembly test. Adequate cleaning and/or drying is especially important for un-encapsulated and/or open frame type power modules. For assistance on appropriate soldering and cleaning procedures, please contact Delta's technical support team.

EMC CIRCUIT

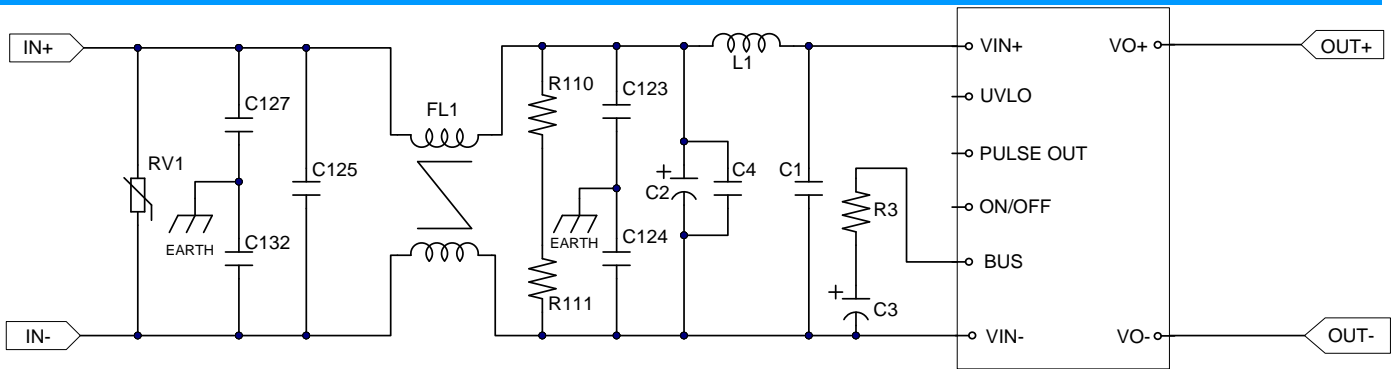


Figure 14 input filter design for EN50155

| ID | PART NO. | TYPE | PARAMETERS | QTY | VENDOR |
|------------------------|--------------------|------------------------------|----------------------------|-----|------------|
| RV1 (MOV) | B72207S0131K101 | Varistor | 170VDC,1.2KA | 1 | EPCOS |
| C123, C124, C127, C132 | R413F1100JU00M | Capacitor,Y2/X1 | 1000p,300VAC | 4 | KEMET |
| C125 | R46KF310045M1M | Capacitor,X2 | 0.1uF,275VAC | 1 | KEMET |
| FL1 | PH9455.105NL | Common choke | 1mH | 1 | Pulse |
| R110,R111 | RV1206FR-07100K | 1206 1/4W | 100k ohm | 2 | YAGEO |
| C1 | C1210X474K251TX | MLCC | 0.47uF/250V(2pcs parallel) | 2 | HOLY STONE |
| C4 | C1210X474K251TX | MLCC | 0.47uF/250V(2pcs parallel) | 2 | HOLY STONE |
| C2 | EKXG201ELL101ML20S | Capacitor, Electrolytic | 100uF,200V | 1 | NCC |
| C3 | EKXJ251EC3121ML25S | Capacitor, Electrolytic | 120uF,250V(2pcs parallel) | 2 | NCC |
| R3 | PNP100JT-52 3R | RES WW 1W 3ohm J FR SMALL | 3.01 ohm/1W | 1 | YAGEO |
| L1 | CMLS104T-3R3MS | choke | 3uH | 1 | Cyntec |

THERMAL CONSIDERATIONS

The thermal curve is based on the test setup shown as figure13. The module is mounted on an Al plate and was cooled by cooling liquid.

Figure14 shows the location to monitor the temperature of the module's baseplate. The baseplate temperature in thermal curve is a reference for customer to make thermal evaluation and make sure the module is operated under allowable temperature. (Thermal curves shown in Figure15 are based on different input voltage).

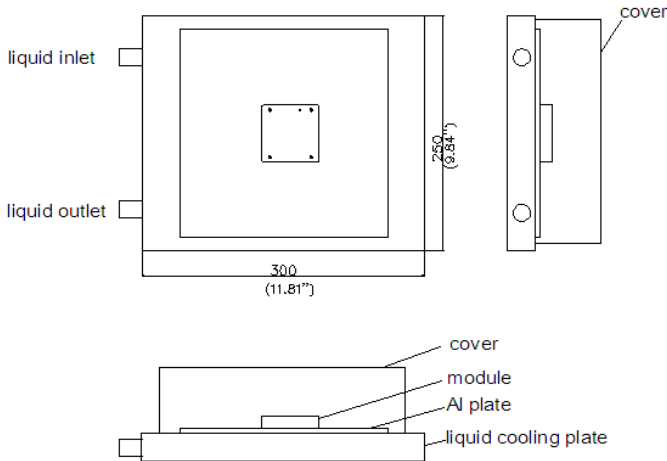


Figure 13: Test setup

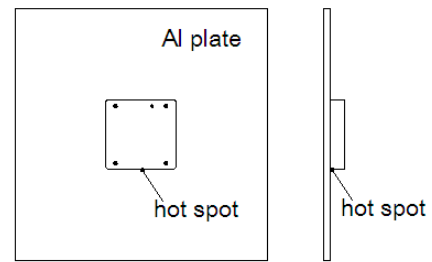


Figure 14: Temperature measured point

THERMAL CURVES

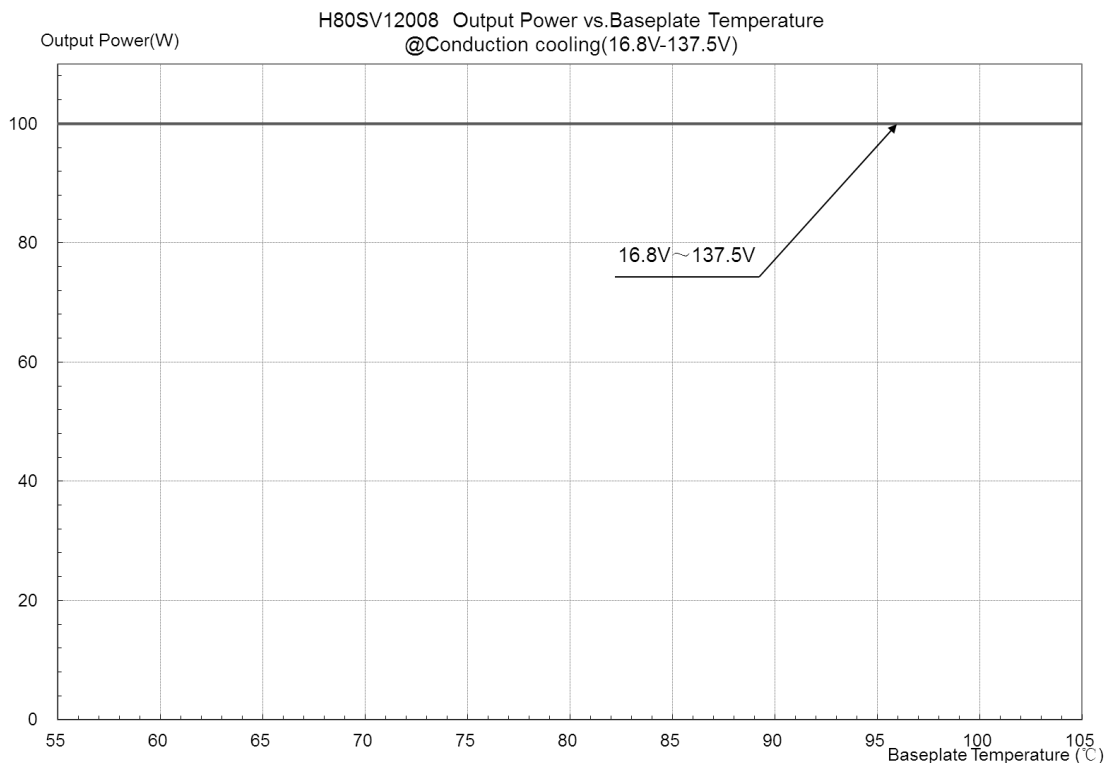
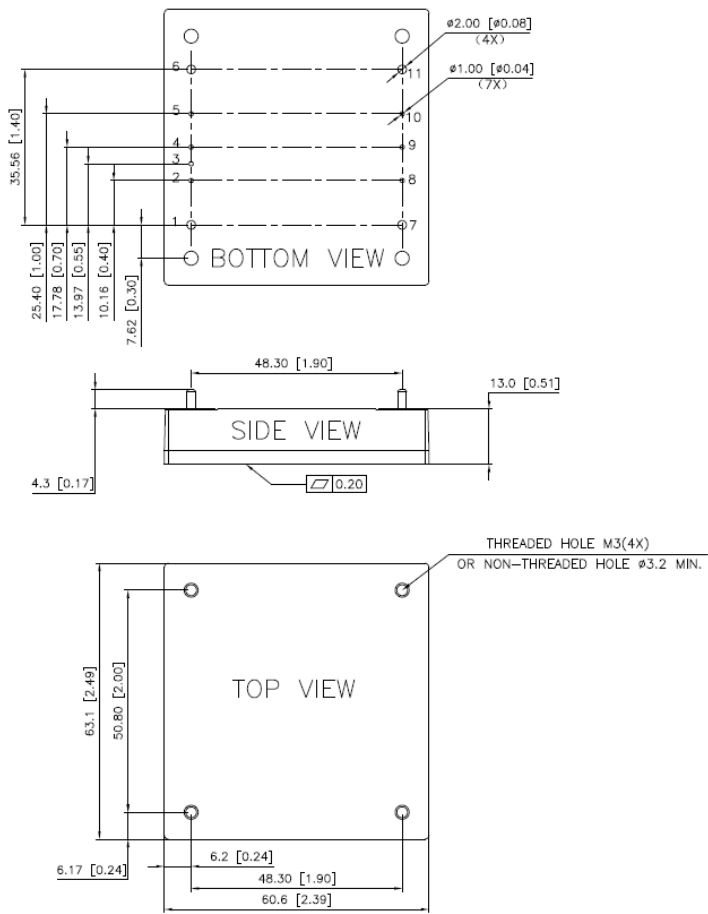


Figure 15: Output Power vs Baseplate temperature @Vin=16.8V~137.5 V

MECHANICAL DRAWING(BASEPLATE)



| PIN # | FUNCTION |
|-------|-----------|
| 1 | Vin+ |
| 2 | UVLO |
| 3 | PULSE OUT |
| 4 | ON/OFF |
| 5 | BUS |
| 6 | Vin- |
| 7 | Vout+ |
| 8 | Sense+ |
| 9 | Trim |
| 10 | Sense- |
| 11 | Vout- |

All dimensions in mm (inches)
 Tolerance: X.X \pm 0.5 (X.XX \pm 0.02)
 X.XX \pm 0.25 (X.XXX \pm 0.010)

Figure 16: The pin function and mechanical drawing



PART NUMBERING SYSTEM

| H | 80 | S | V | 12 | 008 | P | R | F | S |
|----------------|---------------------|-------------------|----------------------|----------------|----------------|------------------------------|--------------------------|--|--|
| Form Factor | Input Voltage | Number of Outputs | Product Series | Output Voltage | Output Current | ON/OFF Logic | Pin Length | | Option Code |
| H - Half Brick | 80 -16.8 ~137.5V | S - Single | V - Series Number | 12 - 12V | 008 - 8A | N - Negative P - Positive | N - 0.145" R - 0.170" | F - RoHS 6/6 (Lead Free) Space - RoHS5/6 | A - Through Hole S - Screw Hole(M3*0.5) |

RECOMMENDED PART NUMBER

| MODEL NAME | INPUT | OUTPUT | EFF @ 100% LOAD |
|----------------|--------------|--------|-----------------|
| H80SV12008PRFS | 16.8V~137.5V | 7.5A | 90.0% |

Default remote on/off logic is negative and pin length is 0.170"

For different remote on/off logic and pin length, please refer to part numbering system above or contact your local sales office.

For modules with through-hole pins and the optional heat-spreader, they are intended for wave soldering assembly onto system boards; please do not subject such modules through reflow temperature profile.

CONTACT: www.deltaww.com/dcdc

USA:

Telephone:
East Coast: 978-656-3993
West Coast: 510-668-5100
Fax: (978) 656 3964

Email: dcdc@deltaww.com

Europe:

Phone: +31-20-655-0967
Fax: +31-20-655-0999

Asia & the rest of world:

Telephone: +886 3 4526107
ext 6220~6226
Fax: +886 3 4513485

WARRANTY

Delta offers a five (5) year limited warranty. Complete warranty information is listed on our web site or is available upon request from Delta.

Information furnished by Delta is believed to be accurate and reliable. However, no responsibility is assumed by Delta for its use, nor for any infringements of patents or other rights of third parties, which may result from its use. No license is granted by implication or otherwise under any patent or patent rights of Delta. Delta reserves the right to revise these specifications at any time, without notice.



Компания «ЭлектроПласт» предлагает заключение долгосрочных отношений при поставках импортных электронных компонентов на взаимовыгодных условиях!

Наши преимущества:

- Оперативные поставки широкого спектра электронных компонентов отечественного и импортного производства напрямую от производителей и с крупнейших мировых складов;
- Поставка более 17-ти миллионов наименований электронных компонентов;
- Поставка сложных, дефицитных, либо снятых с производства позиций;
- Оперативные сроки поставки под заказ (от 5 рабочих дней);
- Экспресс доставка в любую точку России;
- Техническая поддержка проекта, помощь в подборе аналогов, поставка прототипов;
- Система менеджмента качества сертифицирована по Международному стандарту ISO 9001;
- Лицензия ФСБ на осуществление работ с использованием сведений, составляющих государственную тайну;
- Поставка специализированных компонентов (Xilinx, Altera, Analog Devices, Intersil, Interpoint, Microsemi, Aeroflex, Peregrine, Syfer, Eurofarad, Texas Instrument, Miteq, Cobham, E2V, MA-COM, Hittite, Mini-Circuits, General Dynamics и др.);

Помимо этого, одним из направлений компании «ЭлектроПласт» является направление «Источники питания». Мы предлагаем Вам помощь Конструкторского отдела:

- Подбор оптимального решения, техническое обоснование при выборе компонента;
- Подбор аналогов;
- Консультации по применению компонента;
- Поставка образцов и прототипов;
- Техническая поддержка проекта;
- Защита от снятия компонента с производства.



Как с нами связаться

Телефон: 8 (812) 309 58 32 (многоканальный)

Факс: 8 (812) 320-02-42

Электронная почта: org@eplast1.ru

Адрес: 198099, г. Санкт-Петербург, ул. Калинина, дом 2, корпус 4, литера А.