
Si106X DEVELOPMENT KITS USER'S GUIDE

1. Kits Overview

This user's guide describes the development kits of the Si106x Wireless MCU family. The latest version of this user guide is available online at <http://www.silabs.com/products/wireless/wirelessmcu/Pages/default.aspx>. Each kit contains two RF nodes based on the Wireless Motherboard to support evaluation and development of sub-GHz RF links with the different Wireless MCUs. WMCU pico board content of the different kits is listed in Table 1, and content common to all the kits is listed in Table 2.

Table 1. WMCU Pico Boards of the Si106x Development Kits

Qty	Description	Part Number
	Si1060 490 MHz Wireless MCU Development Kit	1060-490-DK
2	Si1060 490 MHz PICO Board	1060-PCE20C490
	Si1060 915 MHz Wireless MCU Development Kit	1060-915-DK
2	Si1060 915 MHz PICO Board	1060-PCE20C915
	Si1062 868 MHz Wireless MCU Development Kit	1062-868-DK
2	Si1062 868 MHz PICO Board	1062-PCE13D868
	Si1064 434 MHz Wireless MCU Development Kit	1064-434-DK
2	Si1064 434 MHz PICO Board	1064-PCE10D434
	Si1064 868 MHz Wireless MCU Development Kit	1064-868-DK
2	Si1064 868 MHz PICO Board	1064-PCE10D868
	Si1064 915 MHz Wireless MCU Development Kit	1064-915-DK
2	Si1064 915 MHz PICO Board	1064-PCE10D915

Table 2. Common Kit Content

Qty	Description	Part Number
2	Wireless Motherboard	MSC-WMB912
2	USB cable (USBA-USB mini)	
2	Antenna with SMA connection	MSC-AT50-XXX
4	AA Battery	
1	Si106x Development Kit User's Guide	

2. Software Setup

There are two software tools provided by Silicon Labs to aid in wireless MCU software development: the Wireless Development Suite (WDS) and the Silicon Labs Integrated Development Environment (IDE). To download and install the Silicon Labs IDE and unlimited Keil PK51 Professional Developer's Kit, follow this link:

<http://pages.silabs.com/lp-keil-pk51.html>.

The recommended starting point for wireless MCU development is the WDS software tool. This tool is able to identify the connected boards by reading their identification memories (EBID) and provides valuable help by greatly simplifying radio configuration, evaluation, and application development.

2.1. Hardware and Software Requirements for WDS

- Windows XP® or later
- Microsoft .NET framework 3.5 or later
- Silicon Labs CP210x VCP driver
- WDS v3.1.9.0 or later

The lack of the .NET framework and VCP driver are recognized during the WDS installation. The install wizard will install the missing components after prompting the user for permission.

2.2. Download WDS

WDS can be obtained from the Silicon Labs website free of charge from the following link:

<http://www.silabs.com/Support Documents/Software/WDS3-Setup.exe>.

2.3. Installation Steps

Note: Before installing this software, local administration rights must be obtained from your network administrator.

1. Start WDS3-Setup.exe
2. Click "Next" to start the installation process
3. Accept the license agreement by clicking the check box, and then press the "Next" button.
4. Select the installation folder.
It is recommended to use the default folder, C:\Program Files\Silabs\WDS3
5. When your settings are confirmed, click "Install" to continue.
6. Click "Finish" to close the WDS Installer.

3. Hardware Setup

After checking the kit contents against Tables 1 and 2, the kit can be put into operation by performing the steps listed below.

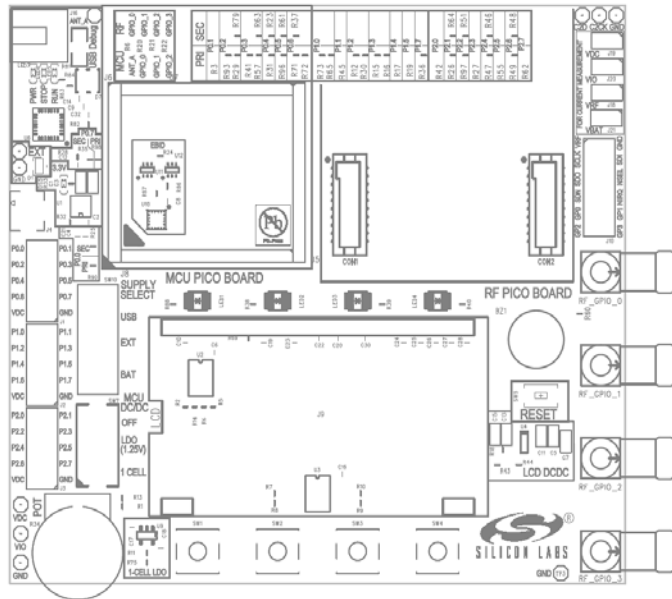


Figure 1. Wireless Motherboard Top Markings

1. Insert a WMCU Pico Board in connectors J5, J6, J7, J8 on the Wireless Motherboard (WMB). Align the triangle symbol on the WMCU Pico board with the triangle symbol on the WMB. *Do not connect any board to CON1 and CON2.*
2. Connect the antenna to the SMA connector on the WMCU Pico Board.
3. Set the SUPPLY SELECT switch to USB position.
4. Set the MCU DC/DC switch to OFF position.
5. All the CURRENT MEASUREMENT jumpers (J18-J21) must be in place.
6. Start the WDS on your PC.
7. Using one of the USB cables in the kit, connect the WMB to the PC.
8. Wait for Windows to install the driver of the debug interface if necessary.
9. WDS must identify the connected board and open an Application Manager window that lists information about the identified board.
10. Boards are shipped without preloaded software. Sample codes can be configured and downloaded to the WMCU from WDS. For details of how to use the WDS, see the WDS User's Guides listed in "5. Useful Documents" on page 5.

Repeat steps 1 to 9 for the other node of the kit. The two nodes are now ready for evaluation. For more details about the board's operation, see "6. The Wireless Motherboard Hardware Platform" on page 7 and "7. Board Schematics" on page 11. Detailed descriptions of the example codes can be found in separate application notes (see "5. Useful Documents" on page 5.)

4. Running a Simple Demo

The following is a quick-step guide to performing simple packet TX/RX.

1. Leave both nodes powered from the USB as described above.
2. Select "Radio Configuration Application".
3. From the Radio Configuration Application window, select "Standard Packet TX" for one node and "Standard Packet RX" for the other node.
4. Leave the default parameter settings untouched; simply click "Download project".
5. Now, the simple TX/RX sample project is running on the boards. When pressing one of the SW1 to SW4 buttons on the TX board, packets are sent, and the corresponding LED of LED1 to LED4 lights up during the transmission. On the RX side, LED1 is always on, while different combinations of LED2 to LED4 light up during successful packet reception according to the button pressed.

5. Useful Documents

Each member of the Wireless MCU family is composed of two chips, as shown in Table 3.

Table 3. Wireless MCU Composition

Wireless MCU	Radio	MCU
Si1060	EZRadioPRO Si4463	C8051F930
Si1062	EZRadioPRO Si4460	C8051F930
Si1064	EZRadio Si4455	C8051F930

This means that, in most cases, the application notes related to the composing chips are valid for the corresponding Wireless MCU. All those WMCU-related documents are available online at <http://www.silabs.com/products/wireless/Pages/default.aspx>.

For general information on the Wireless MCUs, see:

- Si106x Data Sheet

For detailed information on how to program the radio on the WMCUs, refer to the following documents:

Si1060 and Si1062:

- [AN626: Packet Handler Operation for Si446x RFICs](#)
- [AN633: Programming Guide for EZRadioPRO® Si4x6x devices](#)
- [EZRadioPRO API Documentation](#)

Si1064:

- [AN692: Si4355/Si4455 Programming Guide and Sample Codes](#)
- [EZRadio API Documentation](#)

Available Tools:

- [Silicon Laboratories IDE installer](#)
- [WDS3 installer](#)

For hardware design guidance see the following application notes:

- [AN791: Layout Design Guide for the Si106x/8x Wireless MCUs](#)

Si1060 and Si1062:

- [AN643: Si446x/Si4362 RX LNA Matching](#)

Si1060:

- [AN648: Si4063/Si4463/64 TX Matching](#)

Si1062:

- [AN627: Si4060/Si4460/61 Low-Power PA Matching](#)

Si106x-DK

Si1064:

- [AN686: Antennas for the Si4455/4355 RF ICs](#)
- [AN693: Si4455 Low-Power PA Matching](#)

For detailed information on lab measurements and data sheet parameter verification, refer to the following documents:

Si1060 and Si1062:

- [AN632: WDS User Guide for EZRadioPRO® Devices](#)

Si1064:

- [AN797: WDS User's Guide for EZRadio Devices](#)

6. The Wireless Motherboard Hardware Platform

The wireless motherboard platform is a demo, evaluation, and development platform for EZRadio and EZRadioPRO radio ICs. It consists of a wireless motherboard and interchangeable MCU and RF pico boards.

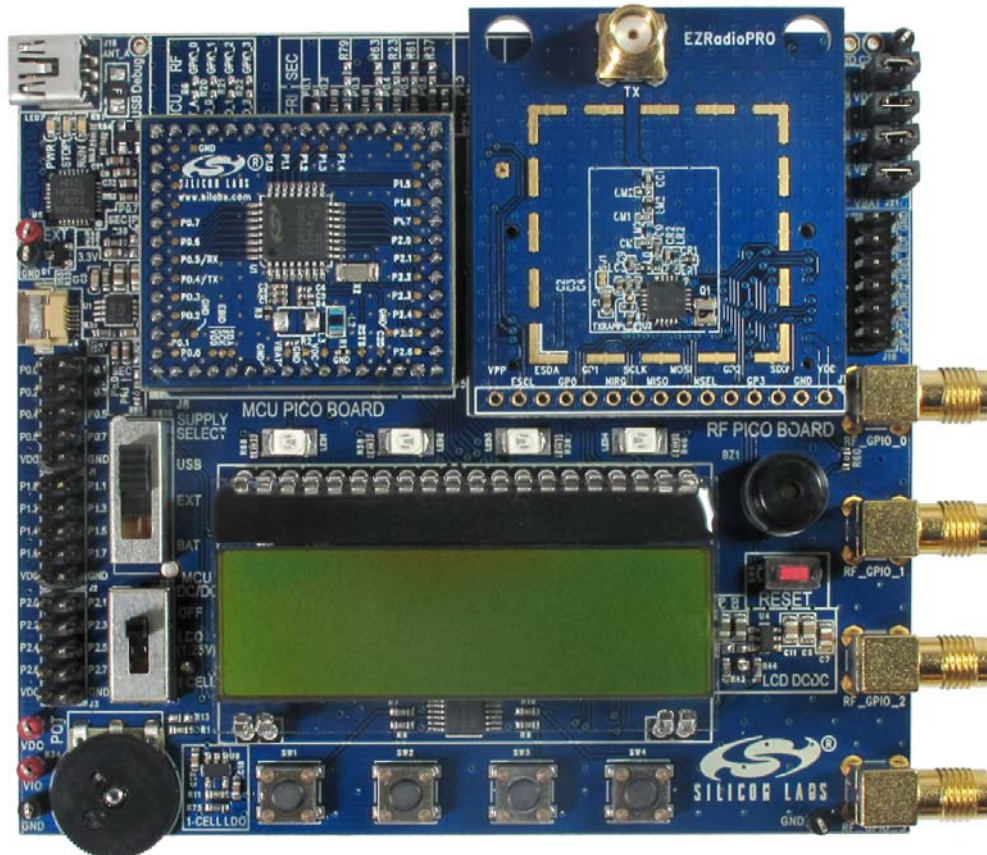


Figure 2. 8-Bit Wireless Motherboard Platform

Si106x-DK

6.1. The Wireless Motherboard

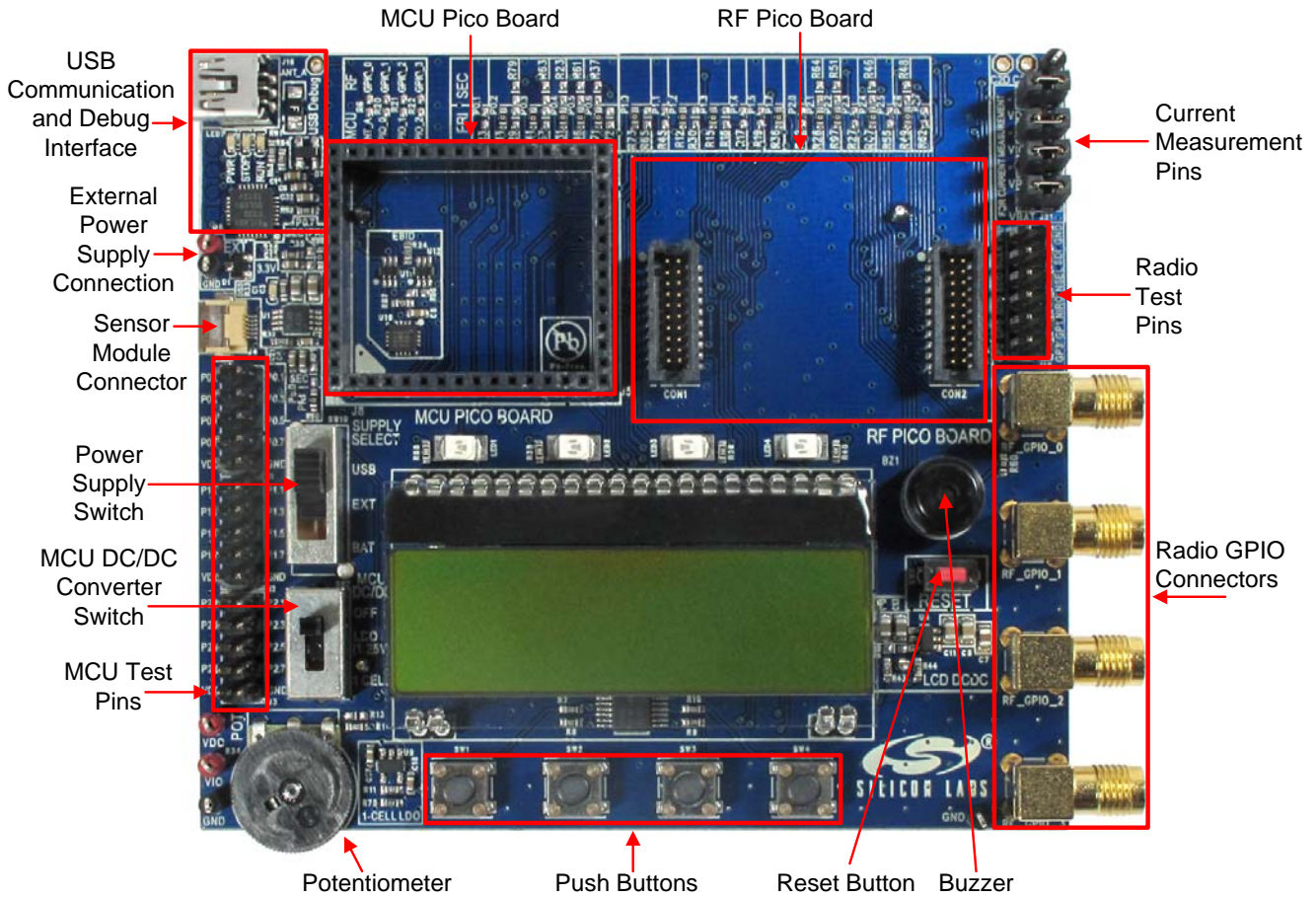


Figure 3. Wireless Motherboard

The wireless motherboard contains four pushbuttons, four LEDs, and a buzzer, which function as simple user interfaces. A graphical LCD displays menu items for range testing purposes, and a potentiometer demonstrates the analog capabilities of the MCU. A switch supports the power options of the MCU's built-in dc/dc converter. Using the current measurement jumpers, current consumption can be measured separately either for the MCU, the radio, or the peripherals. The motherboard contains test pins for all I/O pins of the MCU and for all digital pins of the radio. In addition, there are SMA connectors for the GPIOs of the radio for connection of test equipment. A USB communication interface as well as a built-in Silicon Labs USB-to-C2 debug adapter are integrated onto the board so that the wireless motherboard (WMB) can be directly connected via USB to the PC for downloading and debugging code on the MCU. There is also an interface connection for sensor modules. The MCU is also connected to the RF pico board through a connector pair.

6.2. Power Scheme

The power source of the platform can be selected with the “SUPPLY SELECT” power supply selector switch on the WMB board. If this switch is in the “USB” position, supply voltage is provided by the PC that is connected to the “J16” mini USB connector. If this switch is in the “BAT” position, the supply voltage is provided by two AA batteries in the battery holder on the bottom side of the board. If the “SUPPLY SELECT” switch is in the “EXT” position, supply voltage is provided by an external power source through the “TP7” and “TP9” points.

Using the “MCU dc/dc” switch, the internal dc/dc converter of the C88051F930 MCU on the MCU pico board can be activated if the connected pico board supports this function. If the switch is in the “OFF” position, the MCU’s dc/dc converter is inactive, and the supply voltage is only determined by the state of the “SUPPLY SELECT” switch.

Positioning the switch to either “LDO (1.25 V)” or “1 CELL” position will turn on the MCU’s dc/dc converter by connecting 1.25–1.5 V supply voltage to the VBAT pin and removing external power from the VDC pin. The MCU will provide 1.9 V in the default setting on its VDC pin to all the other connected loads. Since this current is limited, it may be necessary to disconnect or disable some loading part of the board. For further details, see the MCU data sheet and the board schematic. The board schematic can be found in the EZRadioPRO Development Kit User’s Guide. A complete CAD design pack of the board is also available at www.silabs.com.

6.3. WMCU Pico Board

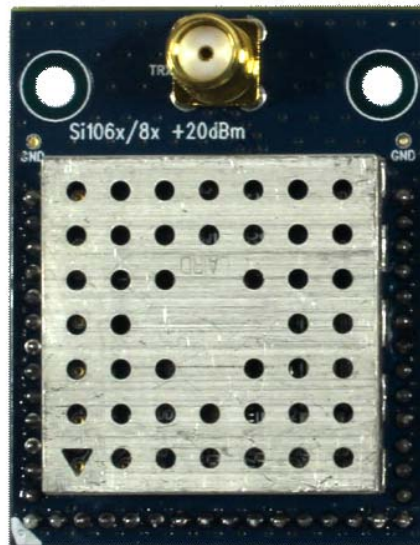


Figure 4. WMCU Pico Board Top Side

The WMCU Pico board is a module that contains a WMCU IC, matching network, and an SMA connector on the top side. These components apart from the antenna connector are covered by a metal shield for noise reduction. The boards also have a factory-loaded board identification memory (EBID) on the bottom side that contains data describing the board properties. Any WMCU Pico board can be connected to the MCU Pico board connector (J5, J6, J8) of the WMB via the MCU Pico board connectors on the bottom side of the board. Since this module contains both the radio and the MCU functionality, the RF Pico board connector of the WMB (CON1 and CON2) must be left open.

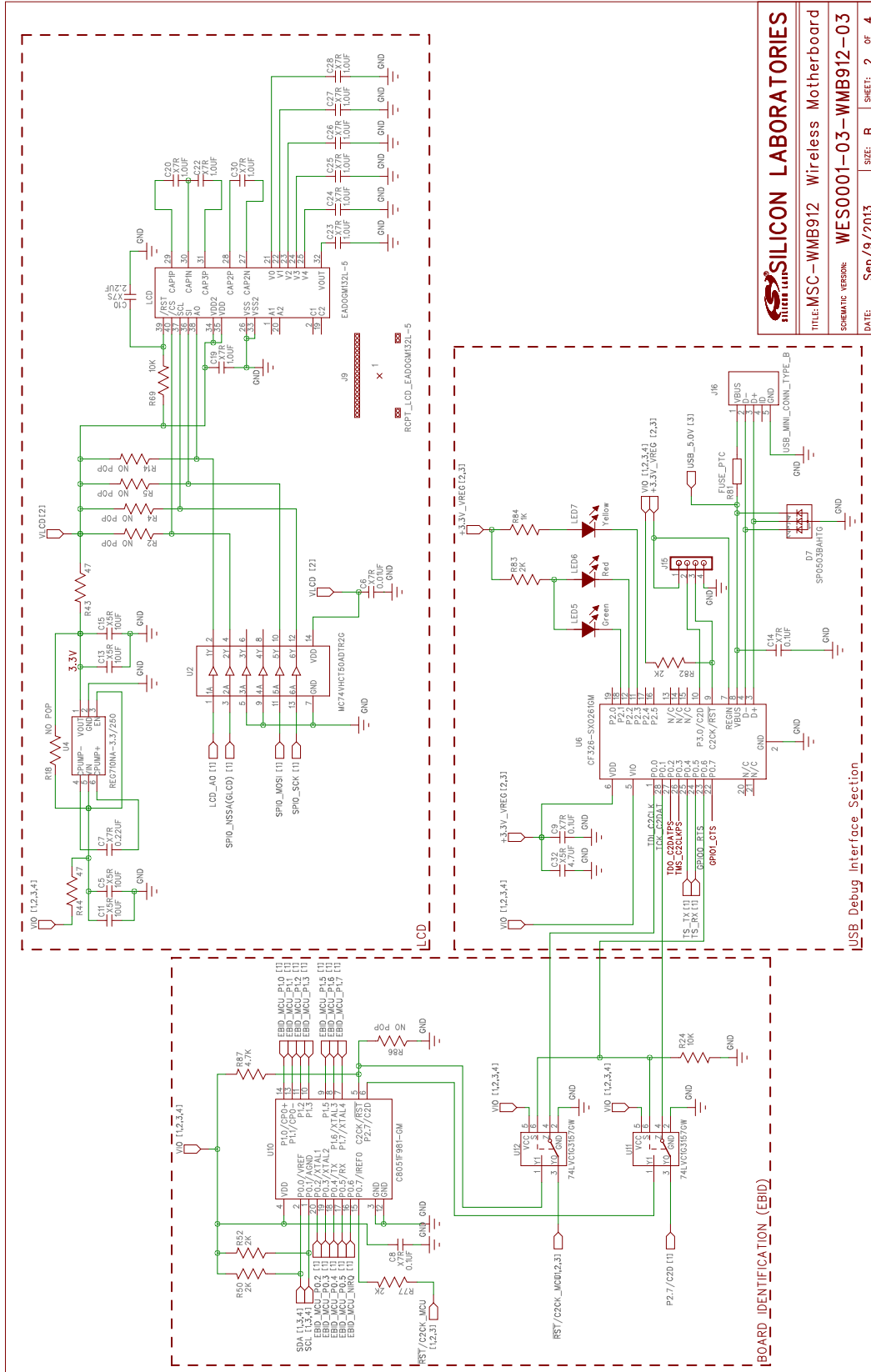
Si106x-DK

Table 4 lists the functions and connections of the WMCU GPIOs. Primary functions are factory-connected on the WMB. Secondary functions can be connected by desoldering a 0 Ω resistor that connects the primary function and soldering in to the proper position to connect the secondary function. Because of the limited number of MCU GPIOs of the WMCU, LEDs and pushbutton switches are connected to the EBID MCU of the WMB912 and can be accessed via the SMBUS on P1.4 and P1.5 of the WMCU.

Table 4. WMCU GPIO Functions/Connections

WMCU Pin	WMB Board Test Pin Marking	MSC-WMB912 Primary Function	0 Ω Resistor	MSC-WMB912 Sec. Function	0 Ω Resistor
P0.0	P0.0	EBID_MCU_NIRQ	R78	LED1/SW1	R90
P0.1	P0.1	EZR_NIRQ			
P0.2	P0.2	SPI0_NSSA (GLCD*)	R29	GPIO_0	R79
P0.3	P0.3	SPI0_MOSI	R57	GPIO_1	R63
P0.4	P0.4	TS_RX	R31	BUZZER	R23
P0.5	P0.5	TS_TX	R96	GPIO_2	R61
P0.6	P0.6	SPI0_SCK	R72	LED2/SW2	R71
(P0.7)		EZR_SDN*			
(P1.0)		EZR_SPI_SCK*			
(P1.1)		EZR_SPI_MISO*			
(P1.2)		EZR_SPI_MOSI*			
(P1.3)		EZR_SPI_NSS3*			
P1.4	P2.1	I2C_SDA	R26	POT_EN	R64
P1.5	P2.2	I2C_SCL	R97	POT	R51
P1.6	P0.7	LCD_A0	R98	IREF	R35

***Note:** This is an interface pin between the radio and the MCU and is connected internally in the WMCU package. It is neither accessible on the pins of the WMCU IC nor, therefore, on the test pins (J10) of the WMB.



SILICON LABS	
LABORATORIES	
TITLE: MSC-WMB912 Wireless Motherboard	
SCHEMATIC VERSION: WES0001-03-WMB912-03	
DATE: Sep/9/2013	SIZE: B
SHEET: 2	OF 4

Figure 6. MSC-WMB912 Wireless Motherboard Schematic (2/4)

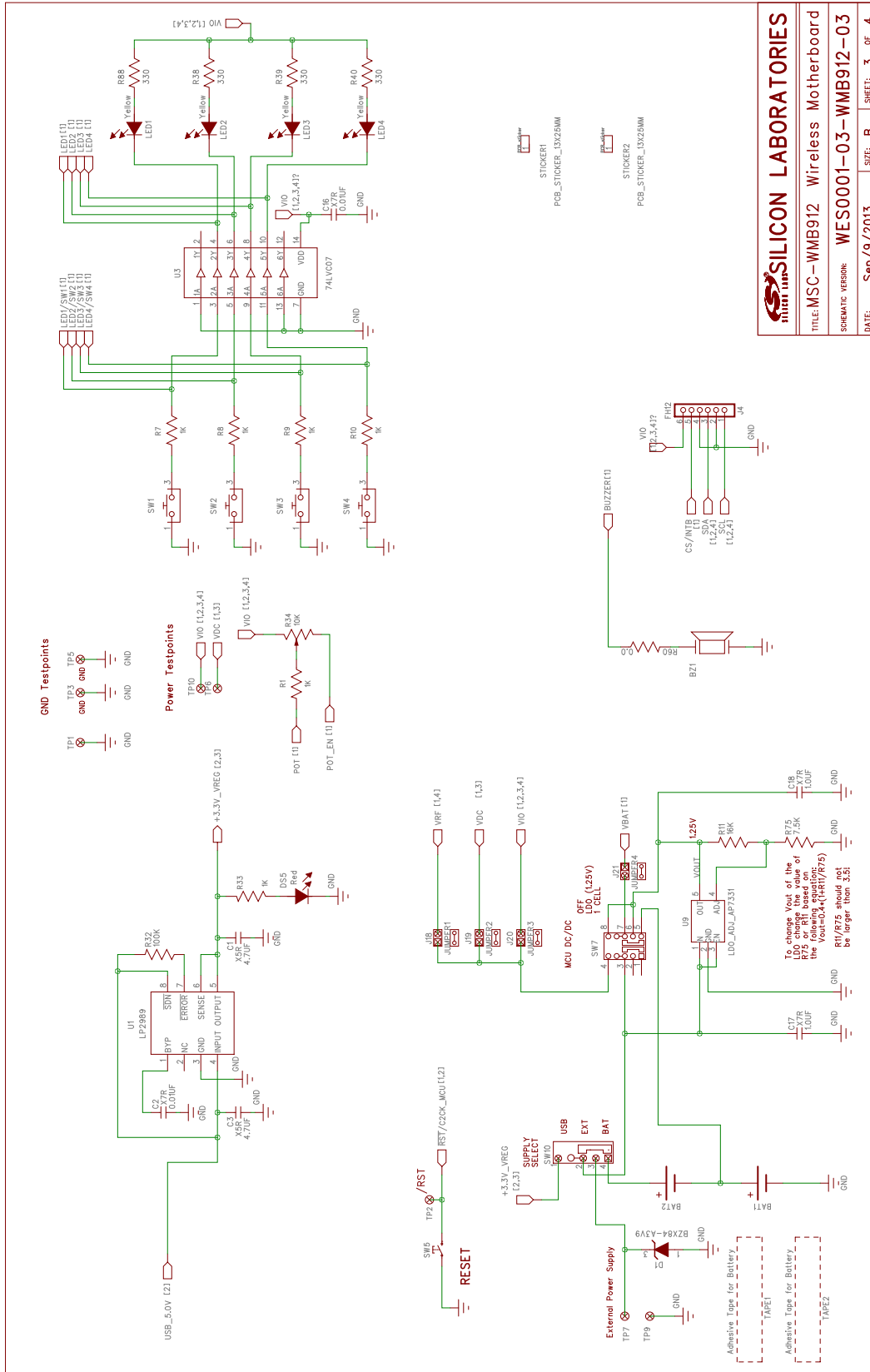


Figure 7. MSC-WMB912 Wireless Motherboard Schematic (3/4)

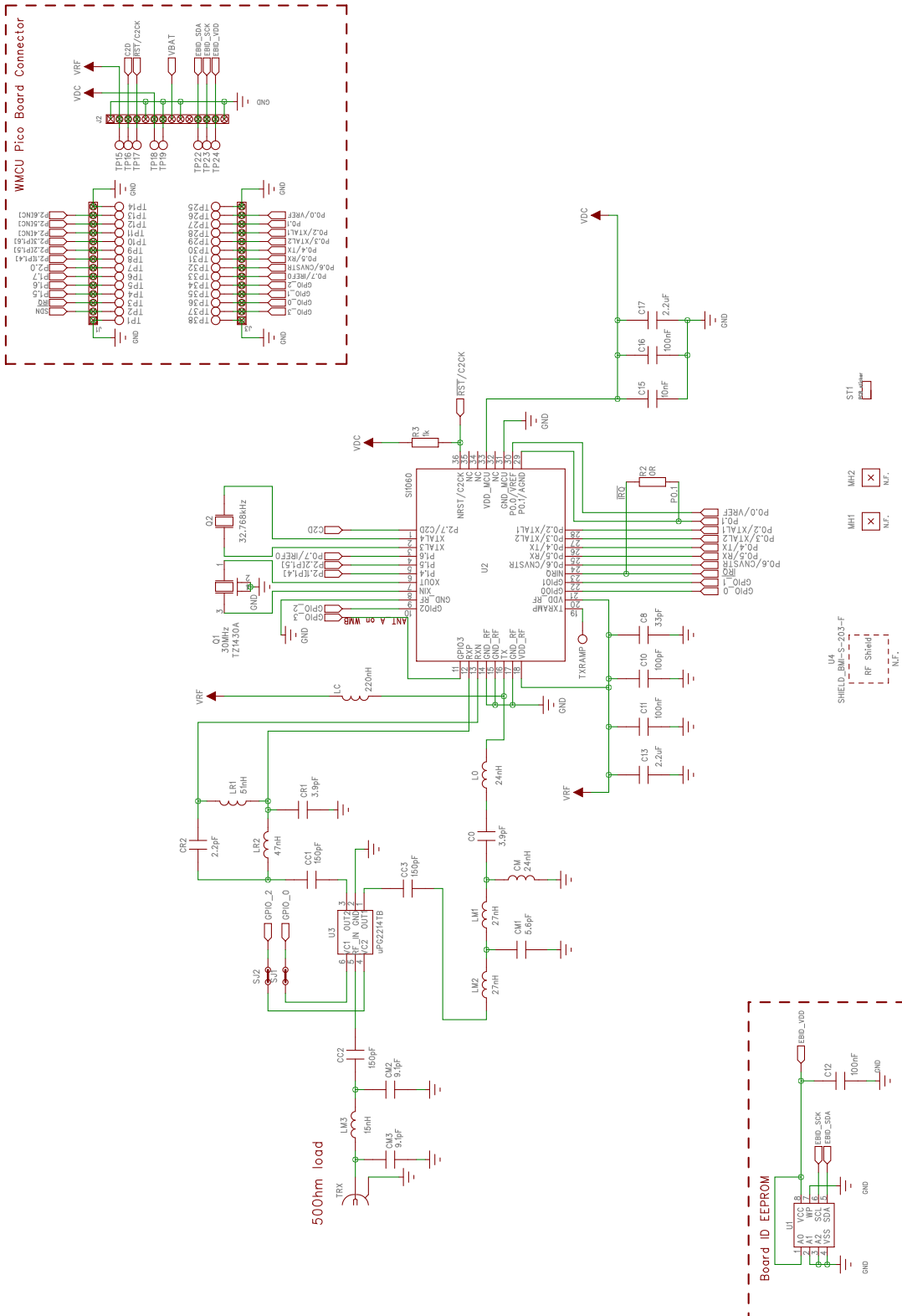


Figure 9. 1060-PCE20C490 WMCU Pico Board Schematic

CONTACT INFORMATION

Silicon Laboratories Inc.

400 West Cesar Chavez

Austin, TX 78701

Tel: 1+(512) 416-8500

Fax: 1+(512) 416-9669

Toll Free: 1+(877) 444-3032

Please visit the Silicon Labs Technical Support web page:

<https://www.silabs.com/support/pages/contacttechnicalsupport.aspx>

and register to submit a technical support request.

Patent Notice

Silicon Labs invests in research and development to help our customers differentiate in the market with innovative low-power, small size, analog-intensive mixed-signal solutions. Silicon Labs' extensive patent portfolio is a testament to our unique approach and world-class engineering team.

The information in this document is believed to be accurate in all respects at the time of publication but is subject to change without notice. Silicon Laboratories assumes no responsibility for errors and omissions, and disclaims responsibility for any consequences resulting from the use of information included herein. Additionally, Silicon Laboratories assumes no responsibility for the functioning of undescribed features or parameters. Silicon Laboratories reserves the right to make changes without further notice. Silicon Laboratories makes no warranty, representation or guarantee regarding the suitability of its products for any particular purpose, nor does Silicon Laboratories assume any liability arising out of the application or use of any product or circuit, and specifically disclaims any and all liability, including without limitation consequential or incidental damages. Silicon Laboratories products are not designed, intended, or authorized for use in applications intended to support or sustain life, or for any other application in which the failure of the Silicon Laboratories product could create a situation where personal injury or death may occur. Should Buyer purchase or use Silicon Laboratories products for any such unintended or unauthorized application, Buyer shall indemnify and hold Silicon Laboratories harmless against all claims and damages.

Silicon Laboratories and Silicon Labs are trademarks of Silicon Laboratories Inc.

Other products or brandnames mentioned herein are trademarks or registered trademarks of their respective holders.



Компания «ЭлектроПласт» предлагает заключение долгосрочных отношений при поставках импортных электронных компонентов на взаимовыгодных условиях!

Наши преимущества:

- Оперативные поставки широкого спектра электронных компонентов отечественного и импортного производства напрямую от производителей и с крупнейших мировых складов;
- Поставка более 17-ти миллионов наименований электронных компонентов;
- Поставка сложных, дефицитных, либо снятых с производства позиций;
- Оперативные сроки поставки под заказ (от 5 рабочих дней);
- Экспресс доставка в любую точку России;
- Техническая поддержка проекта, помощь в подборе аналогов, поставка прототипов;
- Система менеджмента качества сертифицирована по Международному стандарту ISO 9001;
- Лицензия ФСБ на осуществление работ с использованием сведений, составляющих государственную тайну;
- Поставка специализированных компонентов (Xilinx, Altera, Analog Devices, Intersil, Interpoint, Microsemi, Aeroflex, Peregrine, Syfer, Eurofarad, Texas Instrument, Miteq, Cobham, E2V, MA-COM, Hittite, Mini-Circuits, General Dynamics и др.);

Помимо этого, одним из направлений компании «ЭлектроПласт» является направление «Источники питания». Мы предлагаем Вам помощь Конструкторского отдела:

- Подбор оптимального решения, техническое обоснование при выборе компонента;
- Подбор аналогов;
- Консультации по применению компонента;
- Поставка образцов и прототипов;
- Техническая поддержка проекта;
- Защита от снятия компонента с производства.



Как с нами связаться

Телефон: 8 (812) 309 58 32 (многоканальный)

Факс: 8 (812) 320-02-42

Электронная почта: org@eplast1.ru

Адрес: 198099, г. Санкт-Петербург, ул. Калинина, дом 2, корпус 4, литера А.