

## Features

- 25 dB Small Signal Gain
- 43 dBm Third Order Intercept Point (OIP3)
- >2 W Output P1dB
- 34.5 dBm Saturated Output Power
- Integrated Power Detector
- Bias 1330 mA @ 6 V
- Lead-Free 7 mm Cavity Package
- RoHS\* Compliant and 260°C Reflow Compatible

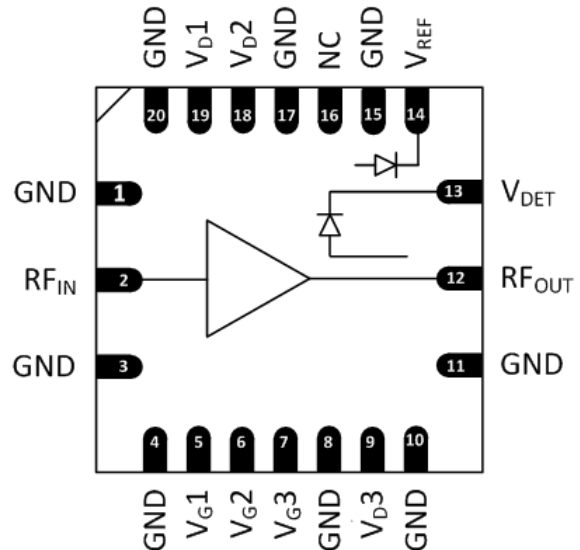
## Description

The MAAP-011145-STD is a power amplifier assembled in a 7 mm surface mount package with a temperature compensated integrated power detector operating from 17.65 to 19.75 GHz. The circuit provides 25 dB gain, 43 dBm OIP3, 2 W P1dB and 34.5 dBm saturated output power.

The device includes ESD protection and by-pass capacitors to ease the implementation and volume assembly of the packaged part.

This power amplifier is specifically designed for use in point-to-point radios for cellular backhaul applications in the 18 GHz band.

## Functional Schematic



## Pin Configuration<sup>2</sup>

| Pin No. | Function     | Pin No.         | Function       |
|---------|--------------|-----------------|----------------|
| 1       | Ground       | 11              | Ground         |
| 2       | RF Input     | 12              | RF Output      |
| 3       | Ground       | 13              | Power Detector |
| 4       | Ground       | 14              | Reference      |
| 5       | Gate 1 Bias  | 15              | Ground         |
| 6       | Gate 2 Bias  | 16              | No Connection  |
| 7       | Gate 3 Bias  | 17              | Ground         |
| 8       | Ground       | 18              | Drain 2 Bias   |
| 9       | Drain 3 Bias | 19              | Drain 1 Bias   |
| 10      | Ground       | 20              | Ground         |
|         |              | 21 <sup>3</sup> | Paddle         |

## Ordering Information<sup>1</sup>

| Part Number        | Package        |
|--------------------|----------------|
| MAAP-011145-STD    | Bulk Quantity  |
| MAAP-011145-STR500 | 500 Piece Reel |
| MAAP-011145-001SMB | Sample Board   |

1. Reference Application Note M513 for reel size information.

2. All "No Connection" pins should be grounded.  
3. The exposed pad centered on the package bottom must be connected to RF, DC and thermal ground.

\* Restrictions on Hazardous Substances, European Union Directive 2011/65/EU.

**Power Amplifier, 2 W**  
**17.65 - 19.75 GHz**

Rev. V2

**Electrical Specifications:  $V_{DD} = 6\text{ V}$ ,  $I_{DQ}^4 = 1330\text{ mA}$ ,  $T_A = +25^\circ\text{C}$**

| Parameter                                       | Units | Min. | Typ. | Max.  |
|---|-------|------|------|-------|
| Small Signal Gain                               | dB    | 22.7 | 26   | 28.3  |
| $P_{SAT}$                                       | dBm   | 33.2 | 34.5 | —     |
| Output IP3, +20 dBm SCL                         | dBm   | 40.5 | 44   | —     |
| Output IP3, +24 dBm SCL                         | dBm   | 37.5 | 42   | —     |
| P1dB  | dBm   | —    | 34   | —     |
| Input Return Loss                               | dB    | —    | 15   | —     |
| Output Return Loss                              | dB    | —    | 10   | —     |
| Detector $V_{diff}$ , $P_{out} = +20\text{dBm}$ | V     | 0.5  | 1.1  | 1.7   |
| Noise Figure                                    | dB    | —    | 7    | —     |
| Gain Ripple over frequency                      | dB    | —    | 2    | —     |
| Gate Voltage                                    | V     | —    | —    | -0.60 |

4. Adjust  $V_{G1}$ ,  $V_{G2}$  and  $V_{G3}$  between -1.2 and -0.6 V to achieve specified  $I_{DQ}$  ( $I_{DQ} = I_{D1} + I_{D2} + I_{D3}$ ).  $V_{G1}$ ,  $V_{G2}$  and  $V_{G3}$  are nominally the same voltage.

## Absolute Maximum Ratings<sup>5,6,7</sup>

| Parameter                                   | Rating          |
|---|-----------------|
| Input Power                                 | +18 dBm         |
| Drain Voltage ( $V_D$ 1,2,3)                | +7 V            |
| Gate Voltage ( $V_G$ 1,2,3)                 | -3 V            |
| Drain to Gate Voltage ( $V_D-V_G$ )         | +10 V           |
| Current ( $I_{DQ} = I_{D1}+I_{D2}+I_{D3}$ ) | 2000 mA         |
| Detector Pin                                | +6 V            |
| Detector Reference Pin                      | +6 V            |
| Junction Temperature                        | +175°C          |
| Storage Temperature                         | -65°C to +150°C |

- Exceeding any one or combination of these limits may cause permanent damage to this device.
- MACOM does not recommend sustained operation near these survivability limits.
- Operating at nominal conditions with  $T_J \leq +150^\circ\text{C}$  will ensure  $\text{MTTF} > 1 \times 10^6$  hours.

## Maximum Operating Ratings<sup>8,9</sup>

| Parameter             | Rating         |
|-----------------------|----------------|
| $P_{DISS}$            | 11.2 W         |
| Junction Temperature  | +150°C         |
| Operating Temperature | -40°C to +85°C |

- Channel temperature directly affects device MTTF. Channel temperature should be kept as low as possible to maximize lifetime. Thermal resistance,  $\Theta_{jc}$ , is 5.8 °C/W.
- For saturated performance, it is recommended that the sum of  $(2V_{DD} + \text{abs}(V_{GG})) < 15 \text{ V}$ .

## Handling Procedures

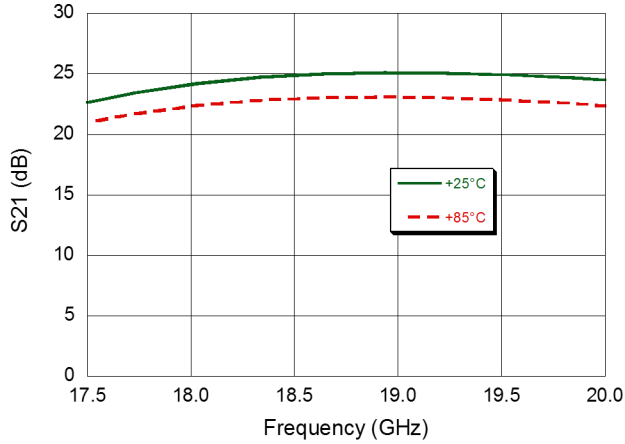
Please observe the following precautions to avoid damage:

## Static Sensitivity

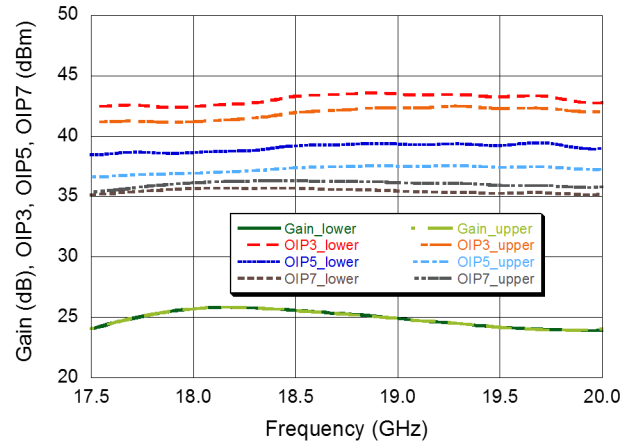
These electronic devices are sensitive to electrostatic discharge (ESD) and can be damaged by static electricity. Proper ESD control techniques should be used when handling these CDM class 2, HBM class 1B devices.

**Typical Performance Curves: 8 W Quiescent Bias,  $V_D = 6 V$**

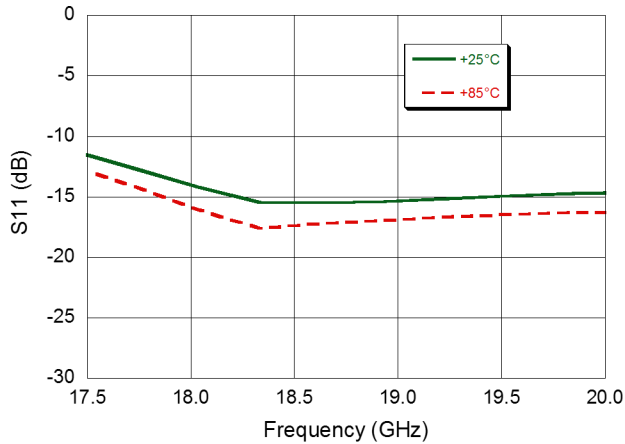
**Gain**



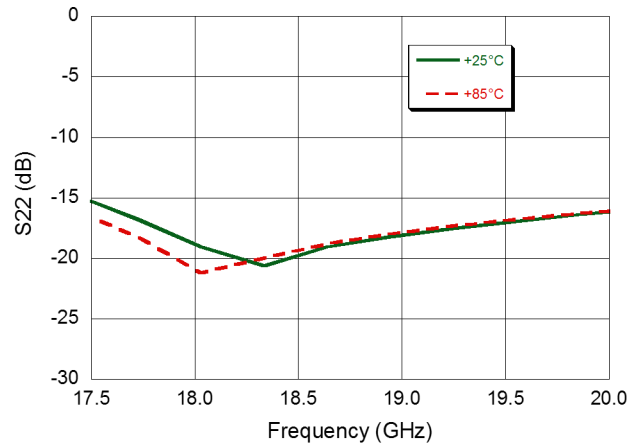
**Gain, OIP3, OIP5, OIP7 @  $P_{IN} = -2 dBm$  per tone**



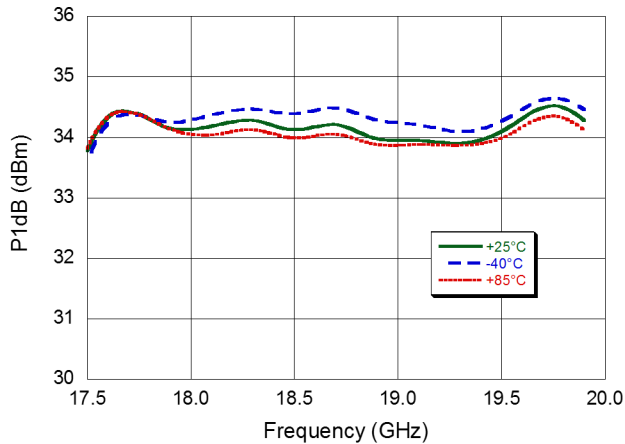
**Input Return Loss**



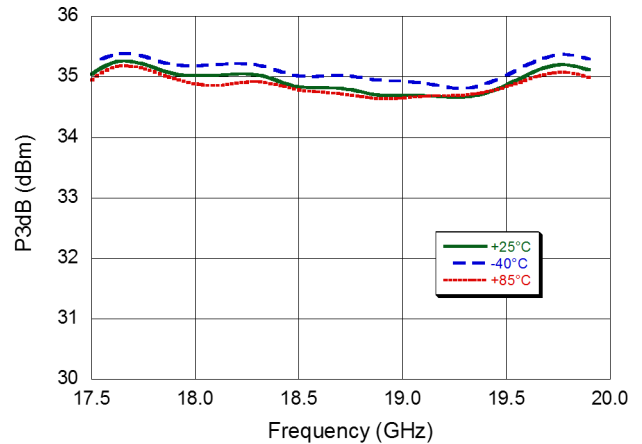
**Output Return Loss**



**P1dB**

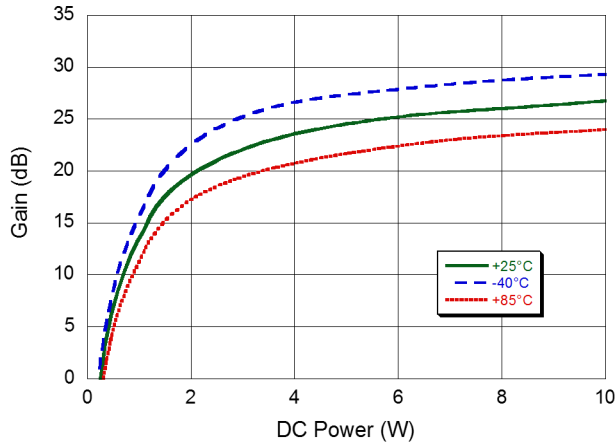


**P3dB**

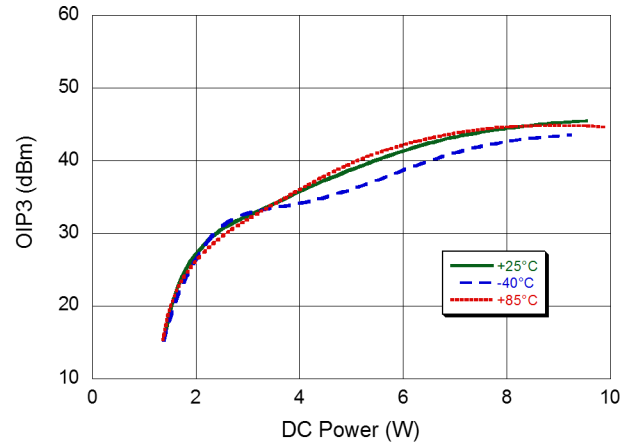


**Typical Performance Curves:  $V_D = 6\text{ V}$**

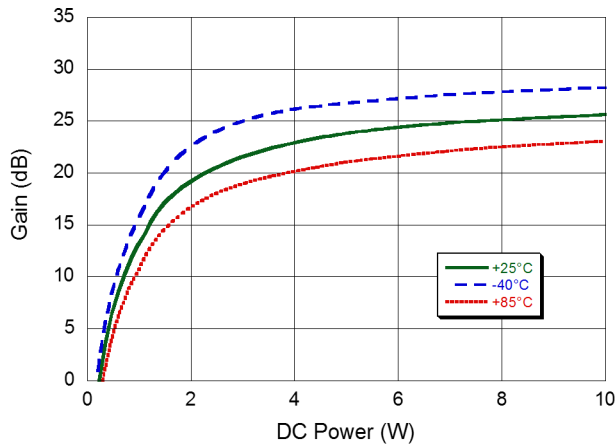
**Gain @ 17.7 GHz**



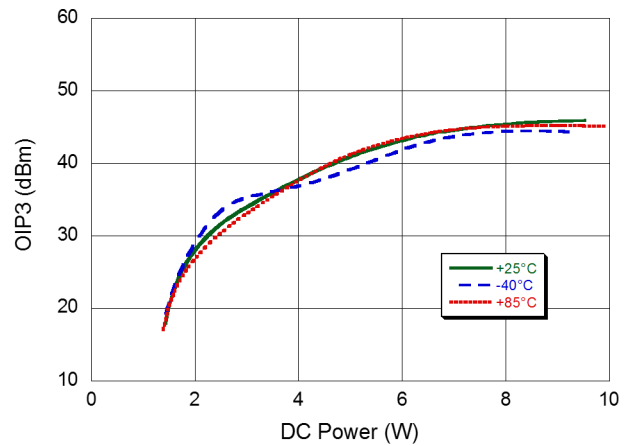
**OIP3 @ 17.7 GHz**



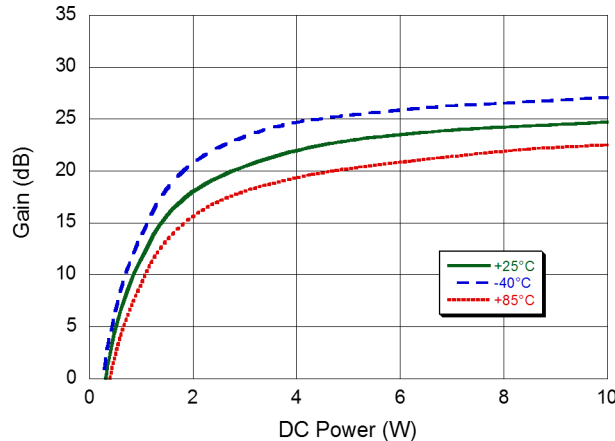
**Gain @ 18.7 GHz**



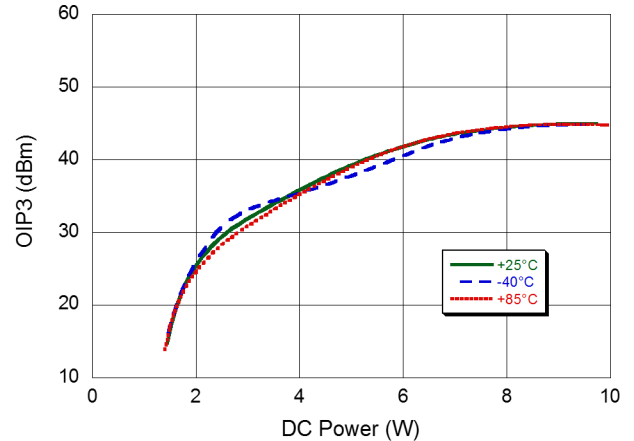
**OIP3 @ 18.7 GHz**



**Gain @ 19.7 GHz**

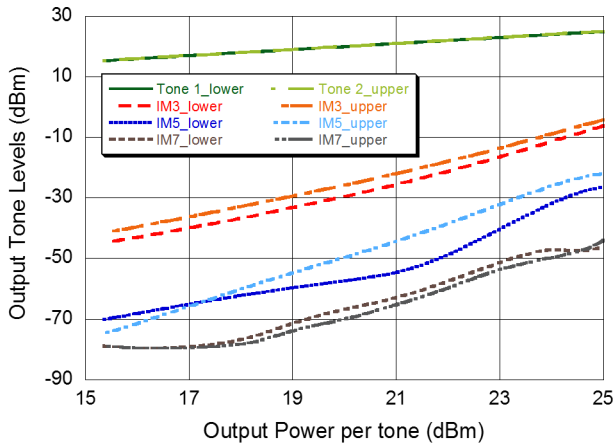


**OIP3 @ 19.7 GHz**

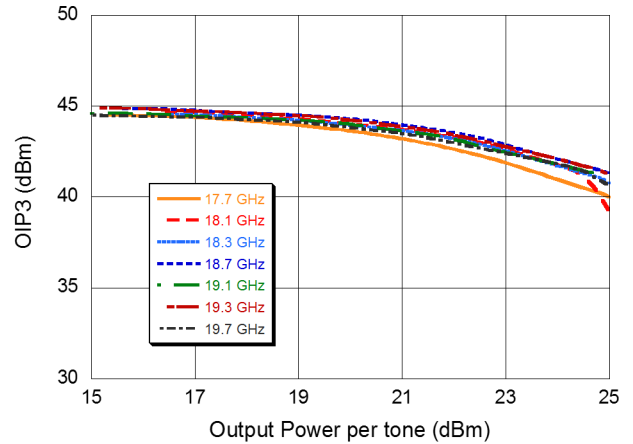


**Typical Performance Curves: 8 W Quiescent Bias,  $V_D = 6 V$**

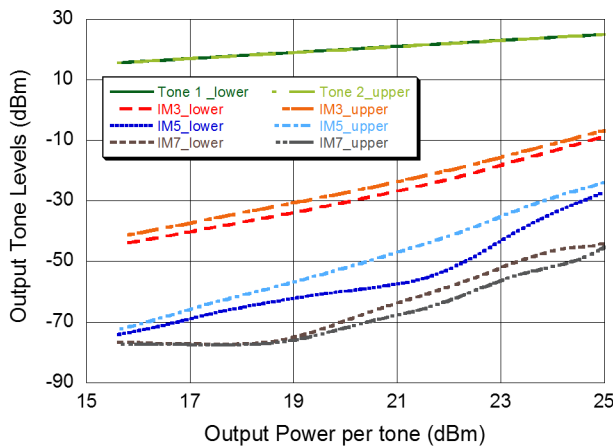
**Lower and Upper Intermodulation Tones @ 17.7 GHz**



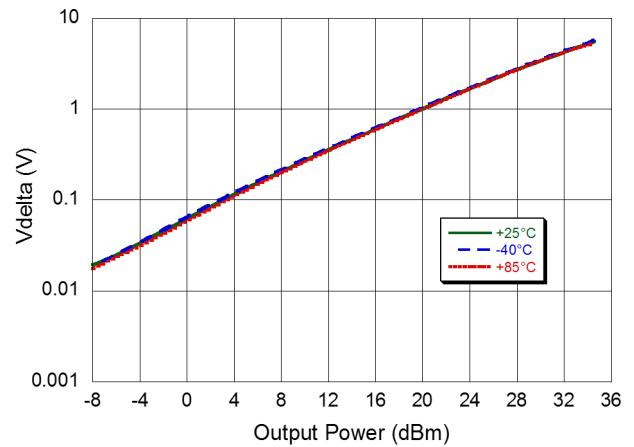
**OIP3 vs. Output Power**



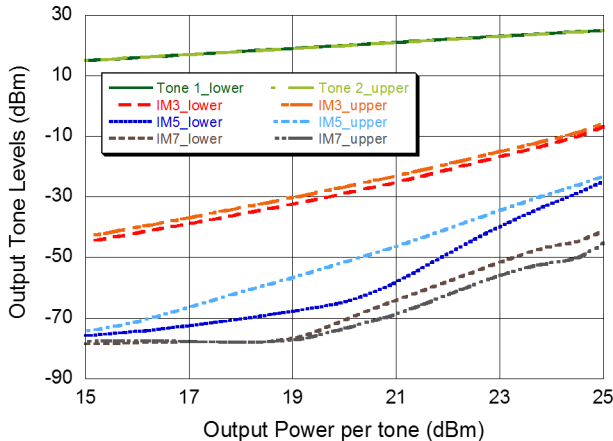
**Lower and Upper Intermodulation Tones @ 18.7 GHz**



**Detector Delta Voltage vs. Output Power**



**Lower and Upper Intermodulation Tones @ 19.7 GHz**



### Biasing -

All gates should be pinched-off ( $V_G < -2$  V) before applying drain voltage ( $V_D = 6$  V). Then the gate voltages can be increased until the desired quiescent drain current is reached in each stage. The recommended quiescent bias is  $V_D = 6$  V,  $I_{D1} = 190$  mA,  $I_{D2} = 380$  mA and  $I_{D3} = 762$  mA. The performance in this datasheet has been measured with fixed gate voltage and no drain current regulation under large signal operation. It is also possible to regulate the drain current dynamically, to limit the DC power dissipation under RF drive. To turn off the device, the turn on bias sequence should be followed in reverse.

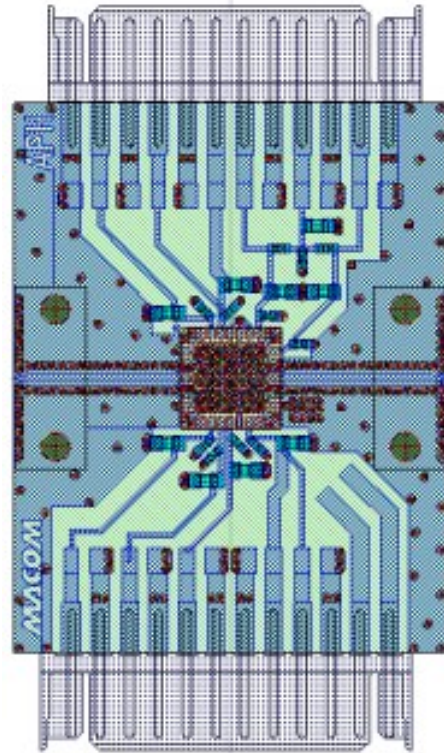
### Bias Arrangement -

Each DC pin ( $V_{D1,2,3}$  and  $V_{G1,2,3}$ ) needs to have bypass capacitance (120 pF and 10 nF) mounted as close to the MMIC as possible.

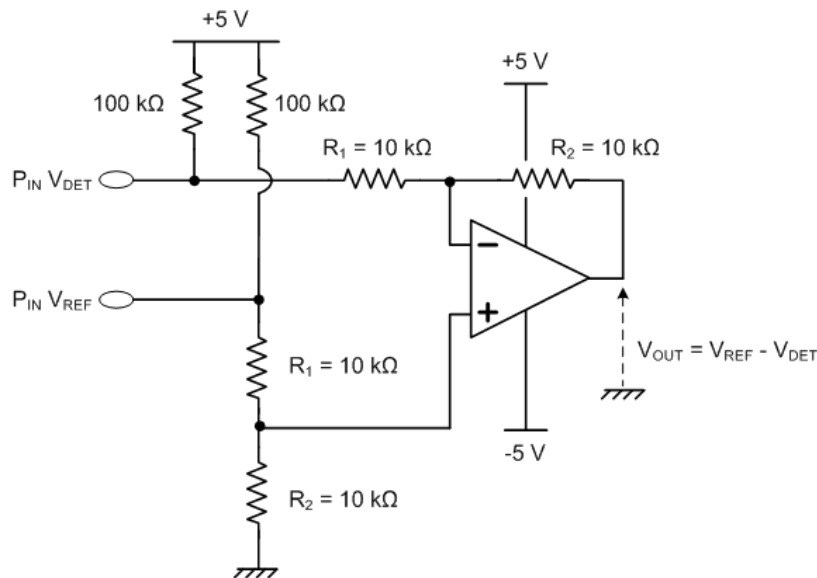
### Power Detector -

As shown in the schematic below, the power detector is implemented by providing +5 V bias and measuring the difference in output voltage with standard op-amp in a differential mode configuration.

### Evaluation Board Layout



### Application Schematic



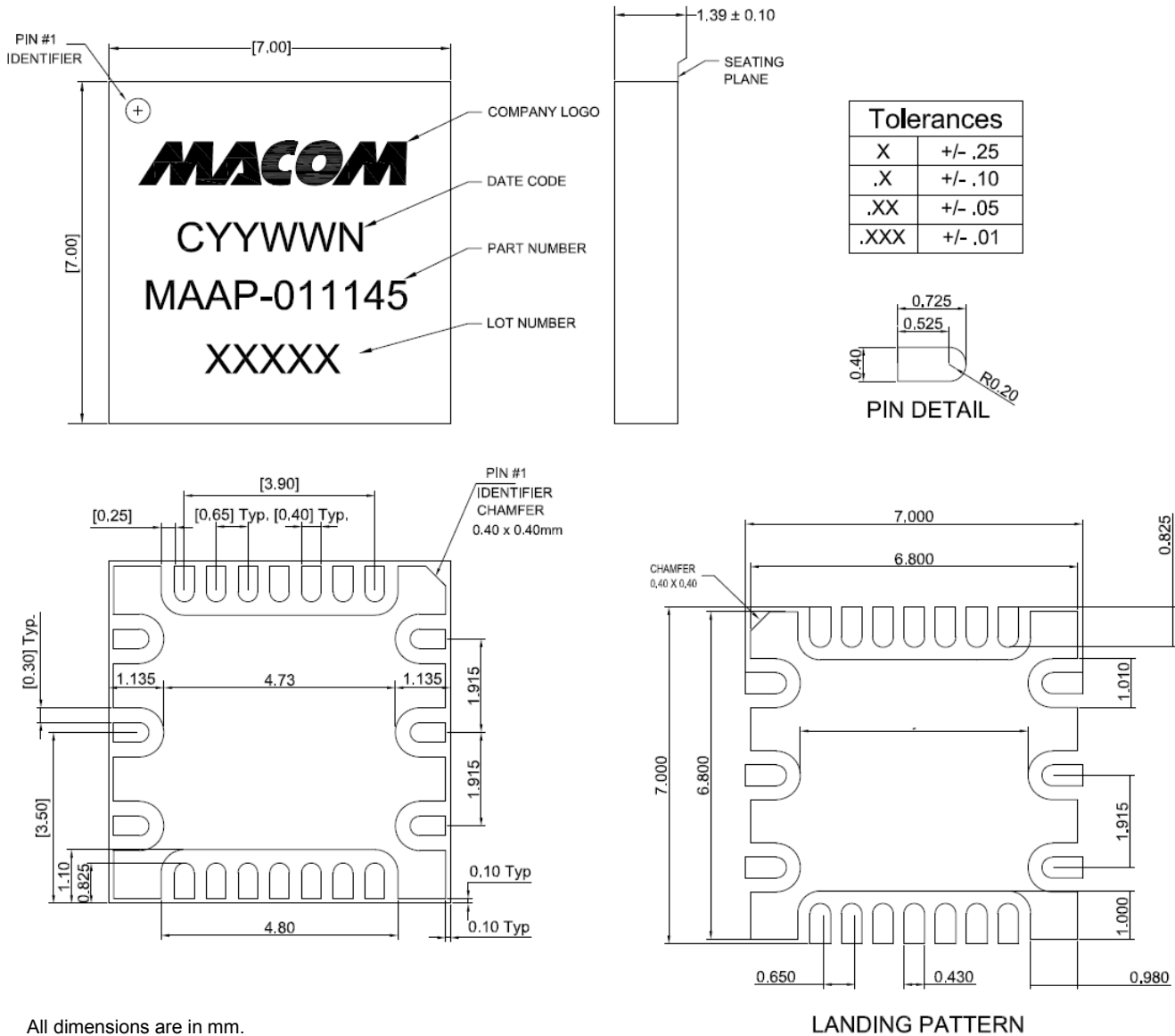
# MAAP-011145-STD



Power Amplifier, 2 W  
17.65 - 19.75 GHz

Rev. V2

## Package Outline Drawing and Recommended Land Pattern†



All dimensions are in mm.

† Meets JEDEC moisture sensitivity level 3 requirements.





Компания «ЭлектроПласт» предлагает заключение долгосрочных отношений при поставках импортных электронных компонентов на взаимовыгодных условиях!

Наши преимущества:

- Оперативные поставки широкого спектра электронных компонентов отечественного и импортного производства напрямую от производителей и с крупнейших мировых складов;
- Поставка более 17-ти миллионов наименований электронных компонентов;
- Поставка сложных, дефицитных, либо снятых с производства позиций;
- Оперативные сроки поставки под заказ (от 5 рабочих дней);
- Экспресс доставка в любую точку России;
- Техническая поддержка проекта, помощь в подборе аналогов, поставка прототипов;
- Система менеджмента качества сертифицирована по Международному стандарту ISO 9001;
- Лицензия ФСБ на осуществление работ с использованием сведений, составляющих государственную тайну;
- Поставка специализированных компонентов (Xilinx, Altera, Analog Devices, Intersil, Interpoint, Microsemi, Aeroflex, Peregrine, Syfer, Eurofarad, Texas Instrument, Miteq, Cobham, E2V, MA-COM, Hittite, Mini-Circuits, General Dynamics и др.);

Помимо этого, одним из направлений компании «ЭлектроПласт» является направление «Источники питания». Мы предлагаем Вам помощь Конструкторского отдела:

- Подбор оптимального решения, техническое обоснование при выборе компонента;
- Подбор аналогов;
- Консультации по применению компонента;
- Поставка образцов и прототипов;
- Техническая поддержка проекта;
- Защита от снятия компонента с производства.



#### Как с нами связаться

**Телефон:** 8 (812) 309 58 32 (многоканальный)

**Факс:** 8 (812) 320-02-42

**Электронная почта:** [org@eplast1.ru](mailto:org@eplast1.ru)

**Адрес:** 198099, г. Санкт-Петербург, ул. Калинина, дом 2, корпус 4, литера А.