

THIS DRAWING IS UNPUBLISHED.

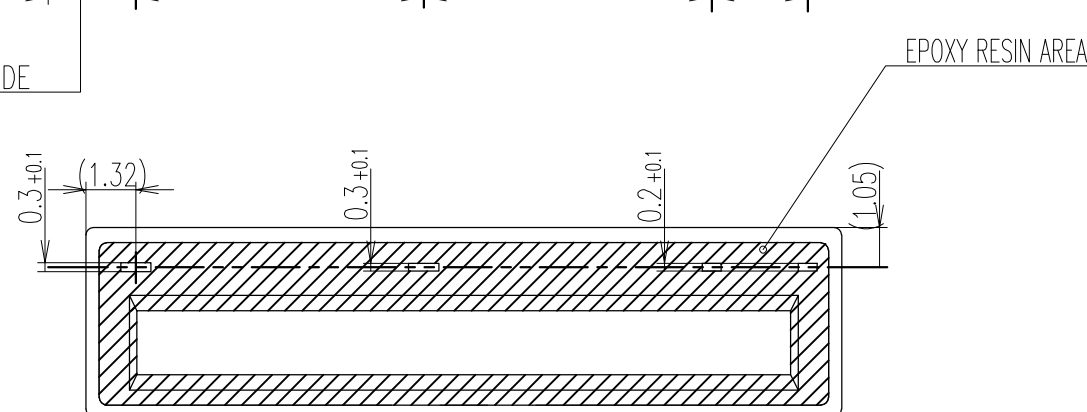
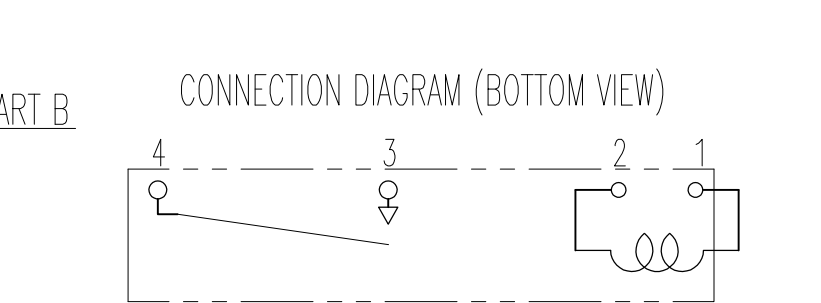
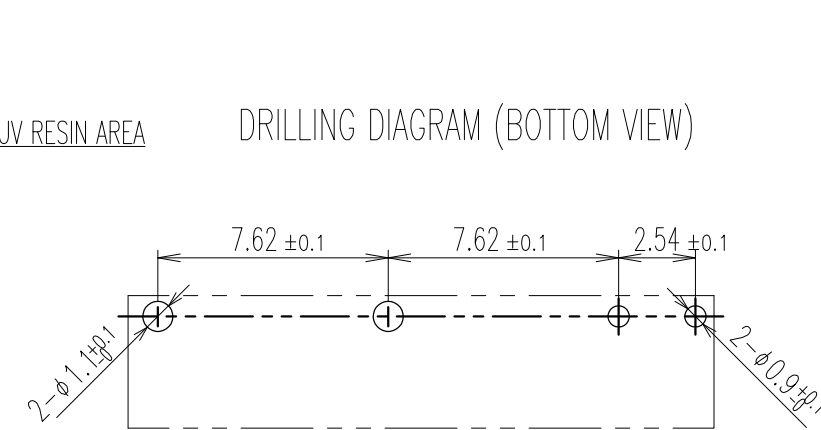
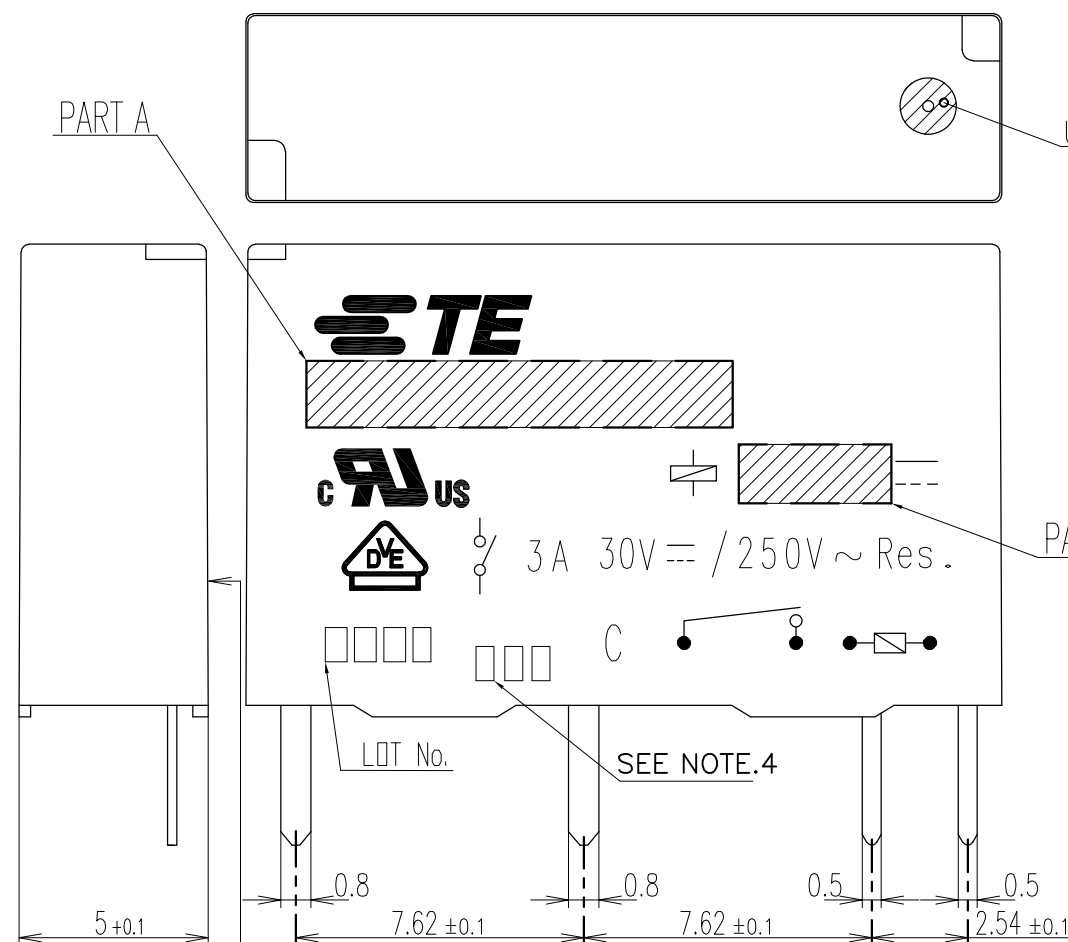
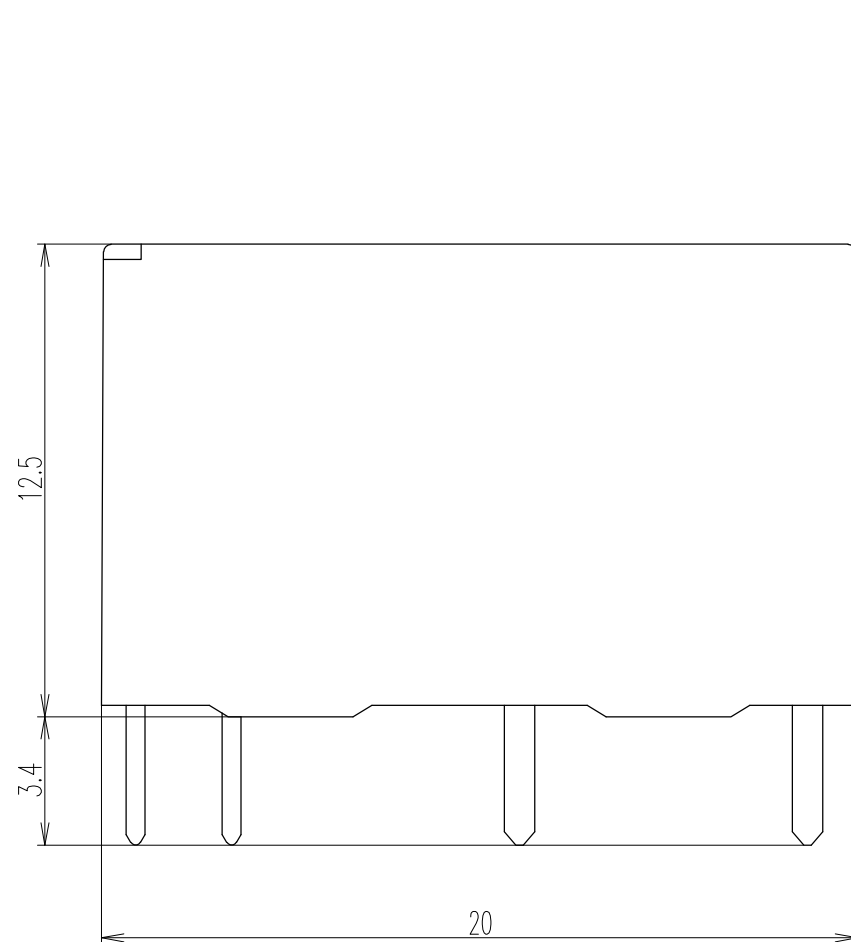
RELEASED FOR PUBLICATION

REVISIONS

© COPYRIGHT - By TE CONNECTIVITY

ALL RIGHTS RESERVED.

| P | LTR | DESCRIPTION | DATE | DWN | APVD |
|----|-----|---------------------|---------------|-----------|-----------|
| G2 | | ADD NEW PART NUMBER | ECO-17-007074 | 17-MAY-17 | HL.C XN.Z |



| Diagram dimension | Tolerance |
|-------------------|-----------|
| 0.99mm max | ±0.1mm |
| 1 - 2.99mm | ±0.2mm |
| 3mm min | ±0.3mm |

1.TERMINAL DIMENSION IS AFTER SOLDER DIP

2. LOT NO.SYSTEM AS FOLLOWING;

0 2 0 1 I ...2 DIGITS FOR THE CHRISTIAN YEAR
 I II 2007....07 2010....10
 2008....08 2011....11
 2009....09 20xx....xx
 II ...2 DIGITS FOR WEEK MANUFACTURED AS
 03.... 3 WEEKS IN 1 YEAR
 04.... 4 WEEKS IN 1 YEAR
 xx.... xx WEEKS IN 1 YEAR

3.MARKING FROM INK CHANGE TO LASER

4.ADD LOT NO. SYSTEM AS FOLLOWING;

1 1 A
 I II III I, DIGITS FOR DAY OF THE WEEK
 1...MONDAY IN THIS WEEK;
 2...TUESDAY IN THIS WEEK;

 7...SUNDAY IN THIS WEEK
 II, DIGITS FOR SHIFT OF THE DAY
 1...DAY SHIFT IN THIS DAY;
 2...NIGHT SHIFT IN THIS DAY;
 III, ONE CHARACTER DISTINGUISH THE LINE
 IDENTITY, SUCH AS: A,B.....Z

| | | | | | |
|----------------------------------------|--|--------------------|----------------------------|---------------|------------|
| THIS DRAWING IS A CONTROLLED DOCUMENT. | | DWN M.MOCHIZUKI | STE TE Connectivity | | |
| DIMENSIONS: mm | | CHK Y.OKAMOTO | | | |
| TOLERANCES UNLESS OTHERWISE SPECIFIED: | | APVD A.NAGAI | NAME | | |
| 0 PLC ± - | | PRODUCT SPEC | PCN-D3M** CUSTOMER DRAWING | | |
| 1 PLC ± - | | APPLICATION SPEC | SIZE | CAGE CODE | DRAWING NO |
| 2 PLC ± - | | FINISH | A3 | 00779 | C-1461491 |
| 3 PLC ± - | | MATERIAL | WEIGHT | RESTRICTED TO | |
| 4 PLC ± - | | | 0 | | |
| ANGLES ± - | | CUSTOMER DRAWING | | | |
| FINISH | | SCALE 5:1 | | SHEET 1 OF 3 | REV G2 |

THIS DRAWING IS UNPUBLISHED. RELEASED FOR PUBLICATION
 © COPYRIGHT - By TE CONNECTIVITY ALL RIGHTS RESERVED.

| REVISIONS | | | | | |
|-----------|-----|-------------|------|-----|------|
| P | LTR | DESCRIPTION | DATE | DWN | APVD |
| - | - | SEE SHEET 1 | - | - | - |


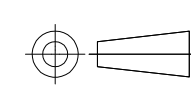
| PART B | PART A | DESCRIPTION | TE PART NO | PACKING SPECIFICATION | PRODUCT SPEC | DISCRIPTION | No. |
|--------|--------|---------------|--------------------|-----------------------|------------------|-------------------------------------------|-----|
| G2 | 12V | PCN-112D3MHZF | PCN-112D3MHZF,000 | 7-1461491-7 | 107-79039 (TUBE) | REINFORCED INSURATION WASHABLE TYPE | d |
| | 12V | PCN-112D3MHZ | PCN-112D3MHZ,0100A | 1-1721095-9 | 107-79039 (TUBE) | | |
| | 24V | PCN-124D3MHZ | PCN-124D3MHZ | 3-1461491-6 | 107-79039 (TUBE) | | |
| | 23.5V | PCN-123D3MHZ | PCN-123D3MHZ | 3-1461491-5 | 107-79039 (TUBE) | | |
| | 18V | PCN-118D3MHZ | PCN-118D3MHZ | 3-1461491-4 | 107-79039 (TUBE) | | |
| | 12V | PCN-112D3MHZ | PCN-112D3MHZ | 3-1461491-3 | 107-79039 (TUBE) | | |
| | 9V | PCN-109D3MHZ | PCN-109D3MHZ | 3-1461491-2 | 107-79039 (TUBE) | | |
| | 6V | PCN-106D3MHZ | PCN-106D3MHZ | 3-1461491-1 | 107-79039 (TUBE) | | |
| | 5V | PCN-105D3MHZ | PCN-105D3MHZ | 3-1461491-0 | 107-79039 (TUBE) | | |
| | 4.5V | PCN-104D3MHZ | PCN-104D3MHZ | 2-1461491-9 | 107-79039 (TUBE) | | |
| | 3V | PCN-103D3MHZ | PCN-103D3MHZ | 2-1461491-8 | 107-79039 (TUBE) | | |
| | 24V | PCN-124D3MZ | PCN-124D3MZ | 2-1461491-7 | 107-79039 (TUBE) | REINFORCED INSURATION PLASTIC SEALED TYPE | c |
| | 23.5V | PCN-123D3MZ | PCN-123D3MZ | 2-1461491-6 | 107-79039 (TUBE) | | |
| | 18V | PCN-118D3MZ | PCN-118D3MZ | 2-1461491-5 | 107-79039 (TUBE) | | |
| | 12V | PCN-112D3MZ | PCN-112D3MZ | 2-1461491-4 | 107-79039 (TUBE) | | |
| | 9V | PCN-109D3MZ | PCN-109D3MZ | 2-1461491-3 | 107-79039 (TUBE) | | |
| | 6V | PCN-106D3MZ | PCN-106D3MZ | 2-1461491-2 | 107-79039 (TUBE) | | |
| | 5V | PCN-105D3MZ | PCN-105D3MZ | 2-1461491-1 | 107-79039 (TUBE) | | |
| | 4.5V | PCN-104D3MZ | PCN-104D3MZ | 2-1461491-0 | 107-79039 (TUBE) | | |
| | 3V | PCN-103D3MZ | PCN-103D3MZ | 1-1461491-9 | 107-79039 (TUBE) | | |
| | 3V | PCN-103D3MZ | PCN-103D3MZ | 1-1461491-9 | 107-79039 (TUBE) | | |

| PART B | PART A | DESCRIPTION | TE PART NO | PACKING SPECIFICATION | PRODUCT SPEC | DISCRIPTION | No. |
|--------|--------|-------------|-------------|-----------------------|------------------|-----------------------------------|-----|
| | 24V | PCN-124D3MH | PCN-124D3MH | 1-1461491-8 | 107-79039 (TUBE) | STANDARD INSURATION WASHABLE TYPE | b |
| | 23.5V | PCN-123D3MH | PCN-123D3MH | 1-1461491-7 | 107-79039 (TUBE) | | |
| | 18V | PCN-118D3MH | PCN-118D3MH | 1-1461491-6 | 107-79039 (TUBE) | | |
| | 12V | PCN-112D3MH | PCN-112D3MH | 1-1461491-5 | 107-79039 (TUBE) | | |
| | 9V | PCN-109D3MH | PCN-109D3MH | 1-1461491-4 | 107-79039 (TUBE) | | |
| | 6V | PCN-106D3MH | PCN-106D3MH | 1-1461491-3 | 107-79039 (TUBE) | | |
| | 5V | PCN-105D3MH | PCN-105D3MH | 1-1461491-2 | 107-79039 (TUBE) | | |
| | 4.5V | PCN-104D3MH | PCN-104D3MH | 1-1461491-1 | 107-79039 (TUBE) | | |
| | 3V | PCN-103D3MH | PCN-103D3MH | 1-1461491-0 | 107-79039 (TUBE) | | |
| | 24V | PCN-124D3M | PCN-124D3M | 1461491-9 | 107-79039 (TUBE) | | |
| | 23.5V | PCN-123D3M | PCN-123D3M | 1461491-8 | 107-79039 (TUBE) | | |
| | 18V | PCN-118D3M | PCN-118D3M | 1461491-7 | 107-79039 (TUBE) | | |
| | 12V | PCN-112D3M | PCN-112D3M | 1461491-6 | 107-79039 (TUBE) | | |
| | 9V | PCN-109D3M | PCN-109D3M | 1461491-5 | 107-79039 (TUBE) | | |
| | 6V | PCN-106D3M | PCN-106D3M | 1461491-4 | 107-79039 (TUBE) | | |
| | 5V | PCN-105D3M | PCN-105D3M | 1461491-3 | 107-79039 (TUBE) | | |
| | 4.5V | PCN-104D3M | PCN-104D3M | 1461491-2 | 107-79039 (TUBE) | | |
| | 3V | PCN-103D3M | PCN-103D3M | 1461491-1 | 107-79039 (TUBE) | | |
| | 3V | PCN-103D3M | PCN-103D3M | 1461491-1 | 107-79039 (TUBE) | | |

| | |
|-----|---------------------|
| 15 | UV RESIN |
| 14 | CASE (NATURAL) |
| | CASE (BLACK) |
| 13 | EPOXY |
| 12 | MAGNETIC WIRE |
| 11 | CARD (NATURAL) |
| | CARD (BLACK) |
| 10 | ARMATURE |
| 9 | STATIONARY CONTACT |
| 8 | STATIONARY TERMINAL |
| 7 | MOVABLE CONTACT |
| 6 | MOVABLE TERMINAL |
| 5 | BASE (NATURAL) |
| | BASE (BLACK) |
| 4 | CORE |
| 3 | COIL TERMINAL B |
| 2 | COIL TERMINAL A |
| 1 | BOBBIN (BLACK ONLY) |
| TEM | DESCRIPTION |

MOLD COLOR
 NATURAL: REINFORCED INSURATION MODEL
 強化絶縁品 (IEC1131-2 Conformed)
 BLACK: BASIC INSURATION MODEL
 基礎絶縁品 (IEC1131-2 Conformed)

PARTS LIST

| | | | | | |
|---------------------------------------------------------------------------------------|--|--------------------|--|-------------------------------------------------------------------------------------------------------|--|
| THIS DRAWING IS A CONTROLLED DOCUMENT. | | DWN M.MOCHIZUKI | |  TE Connectivity | |
| DIMENSIONS: mm | | CHK Y.OKAMOTO | | | |
|  | | APVD A.NAGAI | | NAME | |
| TOLERANCES UNLESS OTHERWISE SPECIFIED: | | PRODUCT SPEC | | PCN-D3M** CUSTOMER DRAWING | |
| 0 PLC ± - | | APPLICATION SPEC | | SIZE | |
| 1 PLC ± - | | WEIGHT | | CAGE CODE | |
| 2 PLC ± - | | CUSTOMER DRAWING | | DRAWING NO | |
| 3 PLC ± - | | SCALE 5:1 | | SHEET 2 OF 3 | |
| 4 PLC ± - | | RESTRICTED TO | | REV G2 | |
| ANGLES ± - | | A3 00779 | | G-1461491 | |
| FINISH | | - | | - | |

THIS DRAWING IS UNPUBLISHED. RELEASED FOR PUBLICATION
 © COPYRIGHT - By TE CONNECTIVITY ALL RIGHTS RESERVED.

| REVISIONS | | | | | |
|-----------|-----|-------------|------|-----|------|
| P | LTR | DESCRIPTION | DATE | DWN | APVD |
| - | - | SEE SHEET 1 | - | - | - |

| PART B | PART A | DESCRIPTION | TE PART NO | PACKING SPECIFICATION | PRODUCT SPEC | DISCRIPTION | No. |
|--------|--------------|--------------|-------------|-----------------------|--------------|-------------------------------------|-----|
| 24V | PCN-124D3MHZ | PCN-124D3MHZ | 7-1461491-4 | 107-79043 (TRAY) | 108-79629 | REINFORCED INSURATION WASHABLE TYPE | D |
| 23.5V | PCN-123D3MHZ | PCN-123D3MHZ | 7-1461491-3 | 107-79043 (TRAY) | 108-79628 | | |
| 18V | PCN-118D3MHZ | PCN-118D3MHZ | 7-1461491-2 | 107-79043 (TRAY) | 108-79627 | | |
| 12V | PCN-112D3MHZ | PCN-112D3MHZ | 7-1461491-1 | 107-79043 (TRAY) | 108-79626 | | |
| 9V | PCN-109D3MHZ | PCN-109D3MHZ | 7-1461491-0 | 107-79043 (TRAY) | 108-79625 | | |
| 6V | PCN-106D3MHZ | PCN-106D3MHZ | 6-1461491-9 | 107-79043 (TRAY) | 108-79624 | | |
| 5V | PCN-105D3MHZ | PCN-105D3MHZ | 6-1461491-8 | 107-79043 (TRAY) | 108-79623 | | |
| 4.5V | PCN-104D3MHZ | PCN-104D3MHZ | 6-1461491-7 | 107-79043 (TRAY) | 108-79622 | | |
| 3V | PCN-103D3MHZ | PCN-103D3MHZ | 6-1461491-6 | 107-79043 (TRAY) | 108-79621 | | |
| 24V | PCN-124D3MZ | PCN-124D3MZ | 6-1461491-5 | 107-79043 (TRAY) | 108-79620 | | |
| 23.5V | PCN-123D3MZ | PCN-123D3MZ | 6-1461491-4 | 107-79043 (TRAY) | 108-79619 | | |
| 18V | PCN-118D3MZ | PCN-118D3MZ | 6-1461491-3 | 107-79043 (TRAY) | 108-79618 | | |
| 12V | PCN-112D3MZ | PCN-112D3MZ | 6-1461491-2 | 107-79043 (TRAY) | 108-79617 | | |
| 9V | PCN-109D3MZ | PCN-109D3MZ | 6-1461491-1 | 107-79043 (TRAY) | 108-79616 | | |
| 6V | PCN-106D3MZ | PCN-106D3MZ | 6-1461491-0 | 107-79043 (TRAY) | 108-79615 | | |
| 5V | PCN-105D3MZ | PCN-105D3MZ | 5-1461491-9 | 107-79043 (TRAY) | 108-79614 | | |
| 4.5V | PCN-104D3MZ | PCN-104D3MZ | 5-1461491-8 | 107-79043 (TRAY) | 108-79613 | | |
| 3V | PCN-103D3MZ | PCN-103D3MZ | 5-1461491-7 | 107-79043 (TRAY) | 108-79612 | | |

| PART B | PART A | DESCRIPTION | TE PART NO | PACKING SPECIFICATION | PRODUCT SPEC | DISCRIPTION | No. |
|--------|-------------|-------------|-------------|-----------------------|--------------|-----------------------------------|-----|
| 24V | PCN-124D3MH | PCN-124D3MH | 5-1461491-6 | 107-79043 (TRAY) | 108-79611 | STANDARD INSURATION WASHABLE TYPE | B |
| 23.5V | PCN-123D3MH | PCN-123D3MH | 5-1461491-5 | 107-79043 (TRAY) | 108-79610 | | |
| 18V | PCN-118D3MH | PCN-118D3MH | 5-1461491-4 | 107-79043 (TRAY) | 108-79609 | | |
| 12V | PCN-112D3MH | PCN-112D3MH | 5-1461491-3 | 107-79043 (TRAY) | 108-79608 | | |
| 9V | PCN-109D3MH | PCN-109D3MH | 5-1461491-2 | 107-79043 (TRAY) | 108-79607 | | |
| 6V | PCN-106D3MH | PCN-106D3MH | 5-1461491-1 | 107-79043 (TRAY) | 108-79606 | | |
| 5V | PCN-105D3MH | PCN-105D3MH | 5-1461491-0 | 107-79043 (TRAY) | 108-79605 | | |
| 4.5V | PCN-104D3MH | PCN-104D3MH | 4-1461491-9 | 107-79043 (TRAY) | 108-79604 | | |
| 3V | PCN-103D3MH | PCN-103D3MH | 4-1461491-8 | 107-79043 (TRAY) | 108-79603 | | |
| 24V | PCN-124D3M | PCN-124D3M | 4-1461491-7 | 107-79043 (TRAY) | 108-79602 | | |
| 23.5V | PCN-123D3M | PCN-123D3M | 4-1461491-6 | 107-79043 (TRAY) | 108-79601 | | |
| 18V | PCN-118D3M | PCN-118D3M | 4-1461491-5 | 107-79043 (TRAY) | 108-79600 | | |
| 12V | PCN-112D3M | PCN-112D3M | 4-1461491-4 | 107-79043 (TRAY) | 108-79599 | | |
| 9V | PCN-109D3M | PCN-109D3M | 4-1461491-3 | 107-79043 (TRAY) | 108-79598 | | |
| 6V | PCN-106D3M | PCN-106D3M | 4-1461491-2 | 107-79043 (TRAY) | 108-79597 | | |
| 5V | PCN-105D3M | PCN-105D3M | 4-1461491-1 | 107-79043 (TRAY) | 108-79596 | | |
| 4.5V | PCN-104D3M | PCN-104D3M | 4-1461491-0 | 107-79043 (TRAY) | 108-79595 | | |
| 3V | PCN-103D3M | PCN-103D3M | 3-1461491-9 | 107-79043 (TRAY) | 108-79594 | | |

| | |
|-----|---------------------|
| 15 | UV RESIN |
| 14 | CASE (NATURAL) |
| | CASE (BLACK) |
| 13 | EPOXY |
| 12 | MAGNETIC WIRE |
| 11 | CARD (NATURAL) |
| | CARD (BLACK) |
| 10 | ARMATURE |
| 9 | STATIONARY CONTACT |
| 8 | STATIONARY TERMINAL |
| 7 | MOVABLE CONTACT |
| 6 | MOVABLE TERMINAL |
| 5 | BASE (NATURAL) |
| | BASE (BLACK) |
| 4 | CORE |
| 3 | COIL TERMINAL B |
| 2 | COIL TERMINAL A |
| 1 | BOBBIN (BLACK ONLY) |
| TEM | DESCRIPTION |

MOLD COLOR
 NATURAL: REINFORCED INSURATION MODEL
 強化絶縁品 (IEC1131-2 Conformed)
 BLACK: BASIC INSURATION MODEL
 基礎絶縁品 (IEC1131-2 Conformed)

THIS DRAWING IS A CONTROLLED DOCUMENT.

| | |
|----------------|----------------------------------------|
| DIMENSIONS: mm | TOLERANCES UNLESS OTHERWISE SPECIFIED: |
| | 0 PLC ± - |
| | 1 PLC ± - |
| | 2 PLC ± - |
| | 3 PLC ± - |
| | 4 PLC ± - |
| | ANGLES ± - |
| MATERIAL | FINISH |
| - | - |

| | | | |
|--------------------|----------------------------|-----------|------------|
| DWN M.MOCHIZUKI | STE TE Connectivity | | |
| CHK Y.OKAMOTO | | | |
| APVD A.NAGAI | NAME | | |
| PRODUCT SPEC | PCN-D3M** CUSTOMER DRAWING | | |
| APPLICATION SPEC | SIZE | CAGE CODE | DRAWING NO |
| WEIGHT | A3 | 00779 | C-1461491 |
| CUSTOMER DRAWING | RESTRICTED TO | SCALE | SHEET |
| | - | 5:1 | 3 OF 3 |
| | | | REV G2 |

PARTS LIST



Компания «ЭлектроПласт» предлагает заключение долгосрочных отношений при поставках импортных электронных компонентов на взаимовыгодных условиях!

Наши преимущества:

- Оперативные поставки широкого спектра электронных компонентов отечественного и импортного производства напрямую от производителей и с крупнейших мировых складов;
- Поставка более 17-ти миллионов наименований электронных компонентов;
- Поставка сложных, дефицитных, либо снятых с производства позиций;
- Оперативные сроки поставки под заказ (от 5 рабочих дней);
- Экспресс доставка в любую точку России;
- Техническая поддержка проекта, помощь в подборе аналогов, поставка прототипов;
- Система менеджмента качества сертифицирована по Международному стандарту ISO 9001;
- Лицензия ФСБ на осуществление работ с использованием сведений, составляющих государственную тайну;
- Поставка специализированных компонентов (Xilinx, Altera, Analog Devices, Intersil, Interpoint, Microsemi, Aeroflex, Peregrine, Syfer, Eurofarad, Texas Instrument, Miteq, Cobham, E2V, MA-COM, Hittite, Mini-Circuits, General Dynamics и др.);

Помимо этого, одним из направлений компании «ЭлектроПласт» является направление «Источники питания». Мы предлагаем Вам помощь Конструкторского отдела:

- Подбор оптимального решения, техническое обоснование при выборе компонента;
- Подбор аналогов;
- Консультации по применению компонента;
- Поставка образцов и прототипов;
- Техническая поддержка проекта;
- Защита от снятия компонента с производства.



Как с нами связаться

Телефон: 8 (812) 309 58 32 (многоканальный)

Факс: 8 (812) 320-02-42

Электронная почта: org@eplast1.ru

Адрес: 198099, г. Санкт-Петербург, ул. Калинина, дом 2, корпус 4, литера А.