

## High Voltage High Current Feed-Through Terminal Blocks

---

The new High Voltage Generation of high current feed-through terminal blocks is specially designed for the requirements of drive technology and power electronics.

In addition to the already familiar simple assembly, the outstanding feature of these terminal blocks is a high nominal voltage of 1000 V. For the conductor cross section range up to 10 mm<sup>2</sup>, there are the horizontal feed-through terminal blocks, HDFK 10-HV and the vertical version, HDFKV 10-HV.

The HDFKV 10-TWIN-HV with a conductor connection on both sides is used to loop through intermediate circuit voltages.

In addition to this, the HV range is rounded off by the molded variant.

The HDFK...-VP-HV terminal blocks are specially designed for the requirements of potted devices, such as filter modules, for example. They are an ideal supplement to the HDFK range for the cross section range of up to 10 mm<sup>2</sup>.

The external parts of the molded high current feed-through terminal blocks is identical to those of the standard HV versions.

On the inside of the device, however, there is a sealing plate as well as a sponge rubber seal that prevents the molding compound from leaking out. The connection here is soldered.



# High Current Feed-Through Terminal Blocks HDFK 10-HV



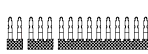
| (IEC)<br>[mm <sup>2</sup> ] | rigid<br>solid | flexible<br>stranded | AWG  | I<br>[A] | U<br>[V] |
|-----------------------------|----------------|----------------------|------|----------|----------|
| Connection data             | 0.5-16         | 0.5-10               | 20-6 | 76       | 1000     |



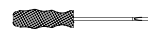
## Technical data

**Feed-through terminal block**, for 1 - 4 mm thick housing panels, with internal and external screw connection

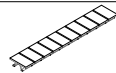
(1) **Insertion bridge**<sup>1)</sup>, fully insul., 2-pos. fully insulated, 3-pos. divisible, fully insulated, 10-pos.



(2) **Screwdriver**, for actuating the tension spring



(3) **Zack strip**, 10-section, white



### Dimensions

#### Technical data in accordance with IEC/ DIN VDE

|   |                    |
|---|--------------------|
| Max. cross section with insertion bridge (solid/stranded) | [mm <sup>2</sup> ] |
| Rated surge voltage / contamination class                 | [kV] / -           |
| Surge voltage category / insulation material group        | - / -              |

#### Connection capacity

|   |                    |
|---|--------------------|
| Stranded with ferrule without / with plastic sleeve | [mm <sup>2</sup> ] |
|---|--------------------|

#### Multi-conductor connection (2 cond. with same cross section)

|  |                    |
|--|--------------------|
| Solid / Stranded                               | [mm <sup>2</sup> ] |
| Stranded with ferrule without plastic sleeve   | [mm <sup>2</sup> ] |
| Stranded with TWIN ferrule with plastic sleeve | [mm <sup>2</sup> ] |

**Stripping length** [mm]

#### Internal cylindrical gauge (IEC 60 947-1)

**Terminal sleeve: Thread / torque** - / [Nm]

#### Insulating material

Inflammability class in acc. with UL 94

#### Approval data (UL and CSA/CUL)

|   |                          |
|---|--------------------------|
| Nominal voltage / current / conductor sizes | UL: [V] / [A] / AWG      |
|   | CSA/CUL: [V] / [A] / AWG |

<sup>1)</sup> Finger-safe protection is not guaranteed when using the insertion bridge externally.

#### Note:

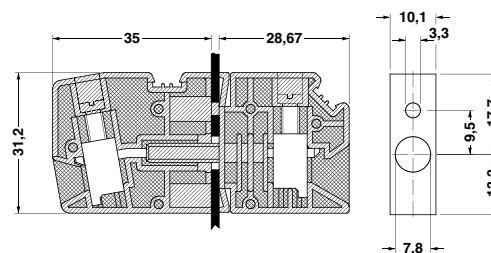
With the HDFK and HDFKV, the terminal space must be completely open when joining both terminal block halves.

The HDFK 10-HV can also be connected if turned by 180°.

| Type            | Order No.               | Pcs. Pkt. |
|-----------------|-------------------------|-----------|
| HDFK 10-HV      | 07 09 86 4              | 50        |
| EB 2-10         | I <sub>max</sub> : 70 A | 100       |
| EB 3-10         |                         | 10        |
| EB 10-10        |                         | 10        |
| SZS 1,0 x 4,0   | 12 05 06 6              | 10        |
| ZB 10:UNPRINTED | 10 53 00 1              | 10        |

see dimensional drawing

|                     |
|---------------------|
| 10 / 10             |
| 6 / 3               |
| III / I             |
| 0.5 - 10 / 0.5 - 10 |
| 0.5 - 4 / 0.5 - 4   |
| 0.5 - 2.5           |
| 0.5 - 6             |
| 11                  |
| B 6                 |
| M 4 / 1.5 - 1.8     |
| PA                  |
| V0                  |
| 600 / 65 / 24 - 6   |
| 600 / 65 / 22 - 6   |



# High Current Feed-Through Terminal Blocks HDFKV 10-HV

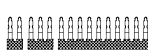


| (IEC)<br>[mm <sup>2</sup> ] | rigid<br>solid | flexible<br>stranded | AWG  | I<br>[A] | U<br>[V] |
|-----------------------------|----------------|----------------------|------|----------|----------|
| Connection data             | 0.5-16         | 0.5-10               | 20-6 | 76       | 1000     |

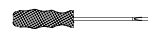
## Technical data

**Feed-through terminal block**, for 1 - 4 mm thick housing panels, with internal and external screw connection

(1) **Insertion bridge**<sup>1)</sup>, fully insul., 2-pos. fully insulated, 3-pos. divisible, fully insulated, 10-pos.

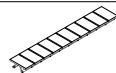


(2) **Screwdriver**, for actuating the tension spring



(3) **Zack strip**, 10-section,

white



## Dimensions

### Technical data in accordance with IEC/ DIN VDE

|   |                    |         |
|---|--------------------|---------|
| Max. cross section with insertion bridge (solid/stranded) | [mm <sup>2</sup> ] | 10 / 10 |
| Rated surge voltage / contamination class                 | [kV] / -           | 6 / 3   |
| Surge voltage category / insulation material group        | - / -              | III / I |

### Connection capacity

|   |                    |                     |
|---|--------------------|---------------------|
| Stranded with ferrule without / with plastic sleeve | [mm <sup>2</sup> ] | 0.5 - 10 / 0.5 - 10 |
|---|--------------------|---------------------|

### Multi-conductor connection (2 cond. with same cross section)

|  |                    |                   |
|--|--------------------|-------------------|
| Solid / Stranded                               | [mm <sup>2</sup> ] | 0.5 - 4 / 0.5 - 4 |
| Stranded with ferrule without plastic sleeve   | [mm <sup>2</sup> ] | 0.5 - 2.5         |
| Stranded with TWIN ferrule with plastic sleeve | [mm <sup>2</sup> ] | 0.5 - 6           |

**Stripping length** [mm] 11

**Internal cylindrical gauge (IEC 60 947-1)** B 6

**Terminal sleeve: Thread / torque** M 4 / 1.5 - 1.8

### Insulating material

Inflammability class in acc. with UL 94 PA

### Approval data (UL and CSA/CUL)

Nominal voltage / current / conductor sizes UL/CUL: [V] / [A] / AWG 600 / 65 / 24 - 6

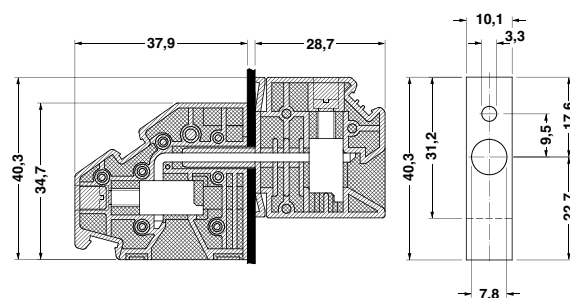
| Type            | Order No.               | Pcs.<br>Pkt. |
|-----------------|-------------------------|--------------|
| HDFKV 10-HV     | 07 17 23 8              | 50           |
| EB 2-10         | I <sub>max</sub> : 70 A | 100          |
| EB 3-10         |                         | 10           |
| EB 10-10        |                         | 10           |
| SZS 1,0 x 4,0   | 12 05 06 6              | 10           |
| ZB 10:UNPRINTED | 10 53 00 1              | 10           |

see dimensional drawing

<sup>1)</sup> Finger-safe protection is not guaranteed when using the insertion bridge externally.

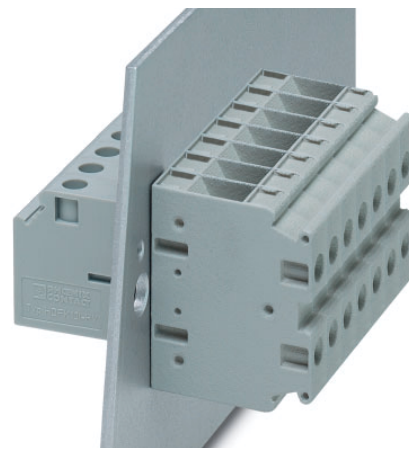
### Note:

With the HDFK and HDFKV, the terminal space must be completely open when joining both terminal block halves.



# High Current Feed-Through Terminal Blocks



## HDFKV 10-TWIN-HV



| (IEC)<br>[mm <sup>2</sup> ] | rigid<br>solid | flexible<br>stranded | AWG  | I<br>[A] | U<br>[V] |
|-----------------------------|----------------|----------------------|------|----------|----------|
| Connection data             | 0.5-16         | 0.5-10               | 20-6 | 76*      | 1000     |

\* The max. load current must not be exceeded by the total current of all connected conductors.

### Technical data

|   |   |
|---|---|
| <b>Feed-through terminal block</b> , with internal and external screw connection, for 1 - 4 mm thick housing panels, external for vertical conductor connection |   |
| (1) <b>Insertion bridge</b> <sup>1)</sup> , fully insul., fully insulated,  | 2-pos.  |
| divisible, fully insulated,   | 3-pos.  |
|   | 10-pos.   |
| (2) <b>Screwdriver</b> , for actuating the tension spring   |        |
| (3) <b>Zack strip</b> , 10-section,   | white  |

### Dimensions

#### Technical data in accordance with IEC/ DIN VDE

|   |                    |
|---|--------------------|
| Max. cross section with insertion bridge (solid/stranded) | [mm <sup>2</sup> ] |
| Rated surge voltage / contamination class                 | [kV] / -           |
| Surge voltage category / insulation material group        | - / -              |

#### Connection capacity

|   |                    |
|---|--------------------|
| Stranded with ferrule without / with plastic sleeve | [mm <sup>2</sup> ] |
|---|--------------------|

#### Multi-conductor connection (2 cond. with same cross section)

|  |                    |
|--|--------------------|
| Solid / Stranded                               | [mm <sup>2</sup> ] |
| Stranded with ferrule without plastic sleeve   | [mm <sup>2</sup> ] |
| Stranded with TWIN ferrule with plastic sleeve | [mm <sup>2</sup> ] |

|                         |      |
|-------------------------|------|
| <b>Stripping length</b> | [mm] |
|-------------------------|------|

#### Internal cylindrical gauge (IEC 60 947-1)

|   |          |
|---|----------|
| <b>Terminal sleeve: Thread / torque</b> | - / [Nm] |
|---|----------|

#### Insulating material

Inflammability class in acc. with UL 94

#### Approval data (UL and CSA/CUL)

|   |                         |
|---|-------------------------|
| Nominal voltage / current / conductor sizes | UL/CUL: [V] / [A] / AWG |
|---|-------------------------|

<sup>1)</sup> Finger-safe protection is not guaranteed when using the insertion bridge externally.

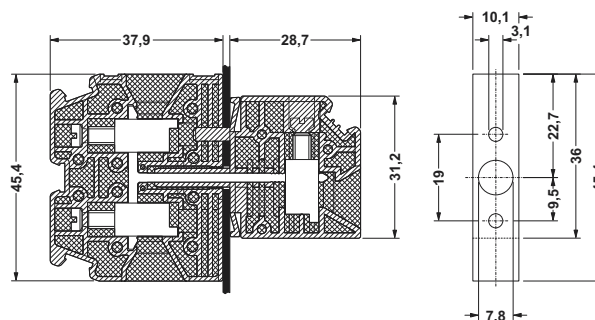
#### Note:

With the HDFK and HDFKV, the terminal space must be completely open when joining both terminal block halves.

| Type                    | Order No.         | Pcs.<br>Pkt. |
|-------------------------|-------------------|--------------|
| <b>HDFKV 10-TWIN-HV</b> | <b>07 17 24 1</b> | <b>50</b>    |
| <b>EB 2-10</b>          | <b>02 03 15 3</b> | <b>100</b>   |
| <b>EB 3-10</b>          | <b>02 03 32 8</b> | <b>10</b>    |
| <b>EB 10-10</b>         | <b>02 03 13 7</b> | <b>10</b>    |
| <b>SZS 1,0 x 4,0</b>    | <b>12 05 06 6</b> | <b>10</b>    |
| <b>ZB 10:UNPRINTED</b>  | <b>10 53 00 1</b> | <b>10</b>    |

see dimensional drawing

|  |                     |
|--|---------------------|
|  | 10 / 10             |
|  | 6 / 3               |
|  | III / I             |
|  | 0.5 - 10 / 0.5 - 10 |
|  | 0.5 - 4 / 0.5 - 4   |
|  | 0.5 - 2.5           |
|  | 0.5 - 6             |
|  | 11                  |
|  | B 6                 |
|  | M 4 / 1.5 - 1.8     |
|  | PA                  |
|  | V0                  |
|  | 600 / 65 / 24 - 6   |



# High Current Feed-Through Terminal Blocks

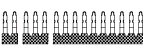


## HDFK 10-VP-HV



| (IEC)<br>[mm <sup>2</sup> ] | rigid<br>solid | flexible<br>stranded | AWG  | I<br>[A] | U<br>[V] |
|-----------------------------|----------------|----------------------|------|----------|----------|
| Connection data             | 0.5-16         | 0.5-10               | 20-6 | 76       | 1000     |

### Technical data

**Molded feed-through terminal block**, for 1 - 4 mm thick housing panels, with external screw connection, with solder connection and sealing plate inside

(1) **Insertion bridge**<sup>1)</sup>, fully insul., 2-pos.   
 fully insulated, 3-pos.   
 divisible, fully insulated, 10-pos. 

(2) **Screwdriver**, for actuating the tension spring 

(3) **Zack strip**, 10-section, white 

### Dimensions

#### Technical data in accordance with IEC/ DIN VDE

|   |                    |
|---|--------------------|
| Max. cross section with insertion bridge (solid/stranded) | [mm <sup>2</sup> ] |
| Rated surge voltage / contamination class                 | [kV] / -           |
| Surge voltage category / insulation material group        | - / -              |

#### Connection capacity

|   |                    |
|---|--------------------|
| Stranded with ferrule without / with plastic sleeve | [mm <sup>2</sup> ] |
|---|--------------------|

#### Multi-conductor connection (2 cond. with same cross section)

|  |                    |
|--|--------------------|
| Solid / Stranded                               | [mm <sup>2</sup> ] |
| Stranded with ferrule without plastic sleeve   | [mm <sup>2</sup> ] |
| Stranded with TWIN ferrule with plastic sleeve | [mm <sup>2</sup> ] |

**Stripping length** [mm]

**Internal cylindrical gauge (IEC 60 947-1)**

**Terminal sleeve: Thread / torque** - / [Nm]

#### Insulating material

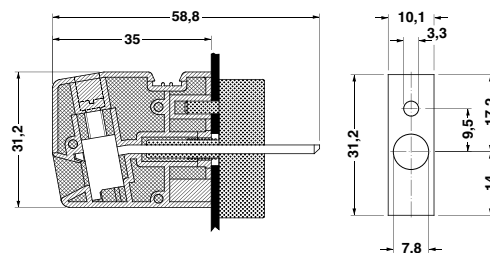
Inflammability class in acc. with UL 94

<sup>1)</sup> Finger-safe protection is not guaranteed when using the insertion bridge externally.

| Type                   | Order No.                             | Pcs.<br>Pkt. |
|------------------------|---------------------------------------|--------------|
| <b>HDFK 10-VP-HV</b>   | <b>07 17 39 3</b>                     | <b>50</b>    |
| <b>EB 2-10</b>         | $I_{max}$ : 70 A<br><b>02 03 15 3</b> | <b>100</b>   |
| <b>EB 3-10</b>         | 70 A<br><b>02 03 32 8</b>             | <b>10</b>    |
| <b>EB 10-10</b>        | 70 A<br><b>02 03 13 7</b>             | <b>10</b>    |
| <b>SZS 1,0 x 4,0</b>   | <b>12 05 06 6</b>                     | <b>10</b>    |
| <b>ZB 10:UNPRINTED</b> | <b>10 53 00 1</b>                     | <b>10</b>    |

see dimensional drawing

|                     |
|---------------------|
| 10 / 10             |
| 6 / 3               |
| III / I             |
| 0.5 - 10 / 0.5 - 10 |
| 0.5 - 4 / 0.5 - 4   |
| 0.5 - 2.5           |
| 0.5 - 6             |
| 11                  |
| B 6                 |
| M 4 / 1.5 - 1.8     |
| PA                  |
| V0                  |



# High Current Feed-Through Terminal Blocks

## HDFKV 10-VP-HV

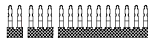


| (IEC)<br>[mm <sup>2</sup> ] | rigid<br>solid | flexible<br>stranded | AWG  | I<br>[A] | U<br>[V] |
|-----------------------------|----------------|----------------------|------|----------|----------|
| Connection data             | 0.5-16         | 0.5-10               | 20-6 | 76       | 1000     |

### Technical data

**Molded Feed-through terminal block**, for 1 - 4 mm thick housing panels, with external screw connection, with solder connection and sealing plate inside

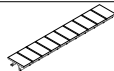
(1) **Insertion bridge**<sup>1)</sup>, fully insul., 2-pos. fully insulated, 3-pos. divisible, fully insulated, 10-pos.



(2) **Screwdriver**, for actuating the tension spring



(3) **Zack strip**, 10-section, white



### Dimensions

#### Technical data in accordance with IEC/ DIN VDE

|   |                    |
|---|--------------------|
| Max. cross section with insertion bridge (solid/stranded) | [mm <sup>2</sup> ] |
| Rated surge voltage / contamination class                 | [kV] / -           |
| Surge voltage category / insulation material group        | - / -              |

#### Connection capacity

|   |                    |
|---|--------------------|
| Stranded with ferrule without / with plastic sleeve | [mm <sup>2</sup> ] |
|---|--------------------|

#### Multi-conductor connection (2 cond. with same cross section)

|  |                    |
|--|--------------------|
| Solid / Stranded                               | [mm <sup>2</sup> ] |
| Stranded with ferrule without plastic sleeve   | [mm <sup>2</sup> ] |
| Stranded with TWIN ferrule with plastic sleeve | [mm <sup>2</sup> ] |

**Stripping length** [mm]

#### Internal cylindrical gauge (IEC 60 947-1)

**Terminal sleeve: Thread / torque** - / [Nm]

#### Insulating material

Inflammability class in acc. with UL 94

#### Approval data (UL and CSA/CUL)

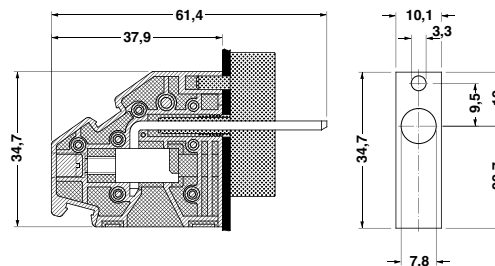
Nominal voltage / current / conductor sizes UL/CUL: [V] / [A] / AWG

<sup>1)</sup> Finger-safe protection is not guaranteed when using the insertion bridge externally.

| Type            | Order No.               | Pcs.<br>Pkt. |
|-----------------|-------------------------|--------------|
| HDFKV 10-VP-HV  | 07 17 25 4              | 50           |
| EB 2-10         | I <sub>max</sub> : 70 A | 100          |
| EB 3-10         |                         | 10           |
| EB 10-10        |                         | 10           |
| SZS 1,0 x 4,0   | 12 05 06 6              | 10           |
| ZB 10:UNPRINTED | 10 53 00 1              | 10           |

see dimensional drawing

|                     |
|---------------------|
| 10 / 10             |
| 6 / 3               |
| III / I             |
| 0.5 - 10 / 0.5 - 10 |
| 0.5 - 4 / 0.5 - 4   |
| 0.5 - 2.5           |
| 0.5 - 6             |
| 11                  |
| B 6                 |
| M 4 / 1.5 - 1.8     |
| PA                  |
| V0                  |
| 600 / 65 / 24 - 6   |





Компания «ЭлектроПласт» предлагает заключение долгосрочных отношений при поставках импортных электронных компонентов на взаимовыгодных условиях!

Наши преимущества:

- Оперативные поставки широкого спектра электронных компонентов отечественного и импортного производства напрямую от производителей и с крупнейших мировых складов;
- Поставка более 17-ти миллионов наименований электронных компонентов;
- Поставка сложных, дефицитных, либо снятых с производства позиций;
- Оперативные сроки поставки под заказ (от 5 рабочих дней);
- Экспресс доставка в любую точку России;
- Техническая поддержка проекта, помощь в подборе аналогов, поставка прототипов;
- Система менеджмента качества сертифицирована по Международному стандарту ISO 9001;
- Лицензия ФСБ на осуществление работ с использованием сведений, составляющих государственную тайну;
- Поставка специализированных компонентов (Xilinx, Altera, Analog Devices, Intersil, Interpoint, Microsemi, Aeroflex, Peregrine, Syfer, Eurofarad, Texas Instrument, Miteq, Cobham, E2V, MA-COM, Hittite, Mini-Circuits, General Dynamics и др.);

Помимо этого, одним из направлений компании «ЭлектроПласт» является направление «Источники питания». Мы предлагаем Вам помощь Конструкторского отдела:

- Подбор оптимального решения, техническое обоснование при выборе компонента;
- Подбор аналогов;
- Консультации по применению компонента;
- Поставка образцов и прототипов;
- Техническая поддержка проекта;
- Защита от снятия компонента с производства.



#### Как с нами связаться

**Телефон:** 8 (812) 309 58 32 (многоканальный)

**Факс:** 8 (812) 320-02-42

**Электронная почта:** [org@eplast1.ru](mailto:org@eplast1.ru)

**Адрес:** 198099, г. Санкт-Петербург, ул. Калинина, дом 2, корпус 4, литера А.