

**TS2 P 7 F 26 - BPEK**

TS2 Series  
 Connector Type:  
**P** - Panel, Front-Mount  
**B** - Panel, Rear-Mount  
**P** - PC Contacts, straight tails  
**E** - Epoxy seal  
**K** - Kit Packaging (one unit/bag)  
**[blank]** - Bulk Packaging  
 Consult factory for other options

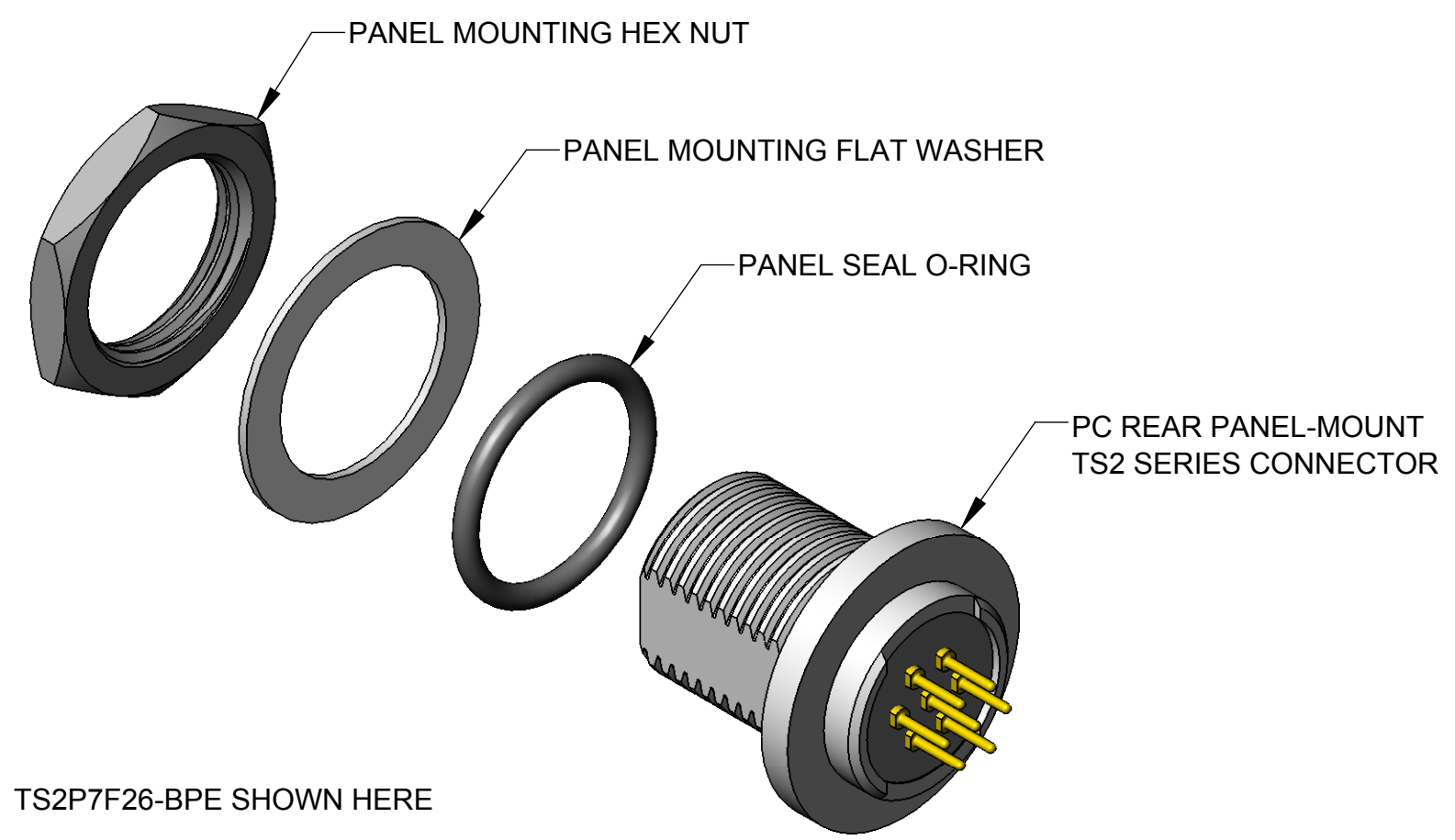
# of contacts:  
**2-5** for #20  
**6-9** for #26

Gender:  
**M** - Male (Pin)  
**F** - Female (Socket)

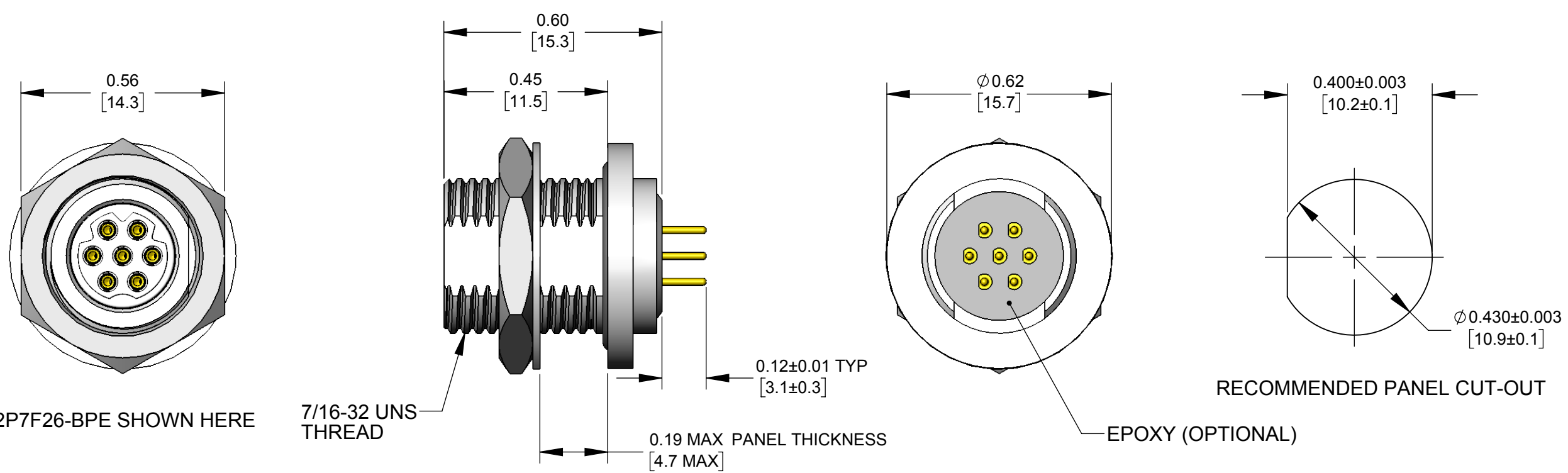
Contact Size:  
**20** - 20, 22, 24, 26 AWG wires  
**26** - 26, 28, 30 AWG wires

Refer to TS2C SERIES drawing for mating Cable-End connectors.

| SPECIFICATIONS:                  |   |
|----------------------------------|---|
| <b>MECHANICAL</b>                |   |
| Mating / Locking Type:           | Threaded Coupling   |
| Life                             | 5,000 cycles minimum  |
| Operating Forces                 | 10 lb. [44.5 N] maximum Insertion or Withdrawal                                     |
| Vibration                        | Mil-Std 202G Method 201A  |
| Panel-Mount Hex Nut Tongue       | 40 in-lb [4.5 Nm] maximum   |
| Cable Securing System:           | Threaded on metal Clamp   |
| <b>ELECTRICAL</b>                |   |
| Voltage Rating                   | 125 V AC/DC for 2-5 contact arrangements<br>30 V AC/DC for 6-9 contact arrangements |
| Current Rating                   | Refer to Current Carry Capacity Table   |
| Insulation Resistance            | 1000 MΩ minimum   |
| Contact Resistance               | 10 mΩ typical   |
| EMI Shielding                    | 360°  |
| <b>ENVIRONMENTAL</b>             |   |
| Temperature Limits               | -40°C to +135°C (-40°F to +275°F)   |
| Operating Temperature Range      | Refer to Current Carry Capacity Table   |
| Moisture Resistance              | Mil-Std 202G Method 106G  |
| Insulation Resistance            | Mil-Std 202G Method 302   |
| Thermal Shock                    | Mil-Std 202G Method 107G  |
| Salt Atmosphere (Corrosion)      | Mil-Std 202G Method 101E  |
| Ingress Protection Ratings       | IP66, IP67, IP68 (6 ft. for 24 hours) per IEC60529, NEMA 250 6P                     |
| <b>MATERIAL</b>                  |   |
| Outer Shell Metal components     | Copper Alloy, electroless nickel plated   |
| Hex Nut & Inner Metal components | Copper Alloy, nickel plated   |
| Electrical Insulator             | Medical Technology LCP, natural   |
| Seal O-rings                     | Thermoplastic Elastomer   |
| Contacts Assembly                | Copper Alloy, gold plated with Stainless Steel locking clip                         |
| Epoxy                            | Silicone Potting Compound   |



TS2P7F26-BPE SHOWN HERE



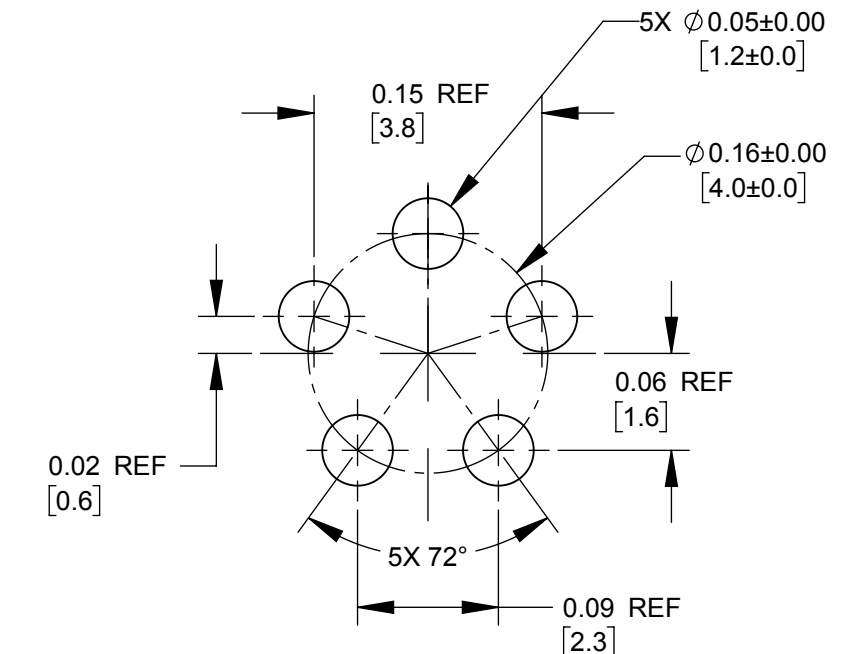
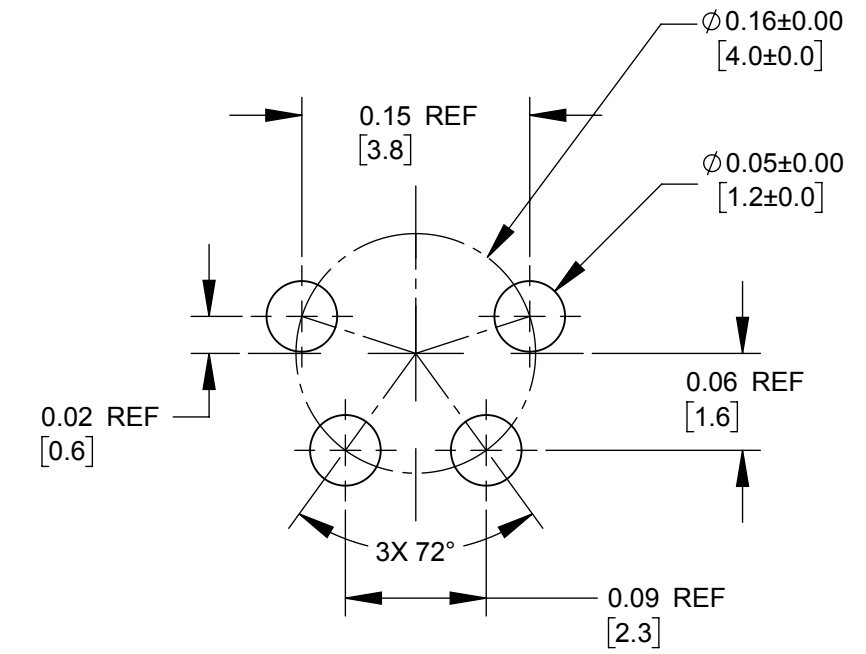
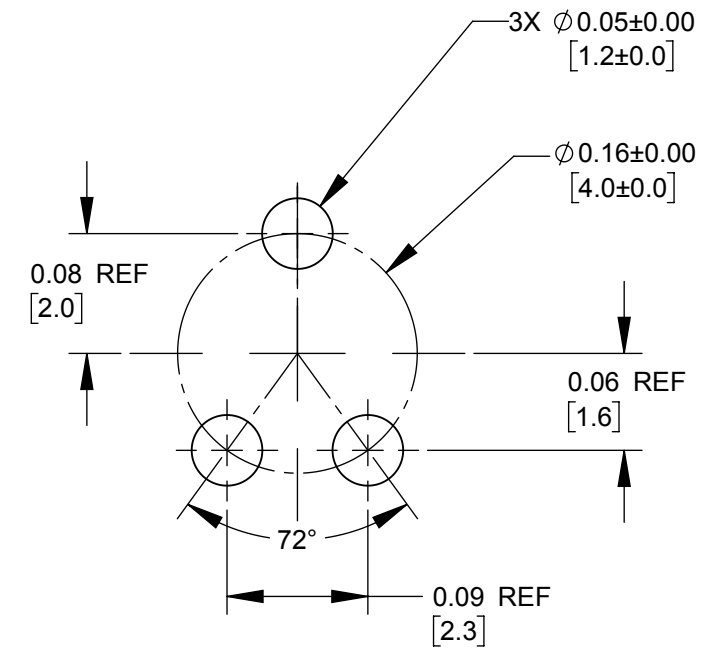
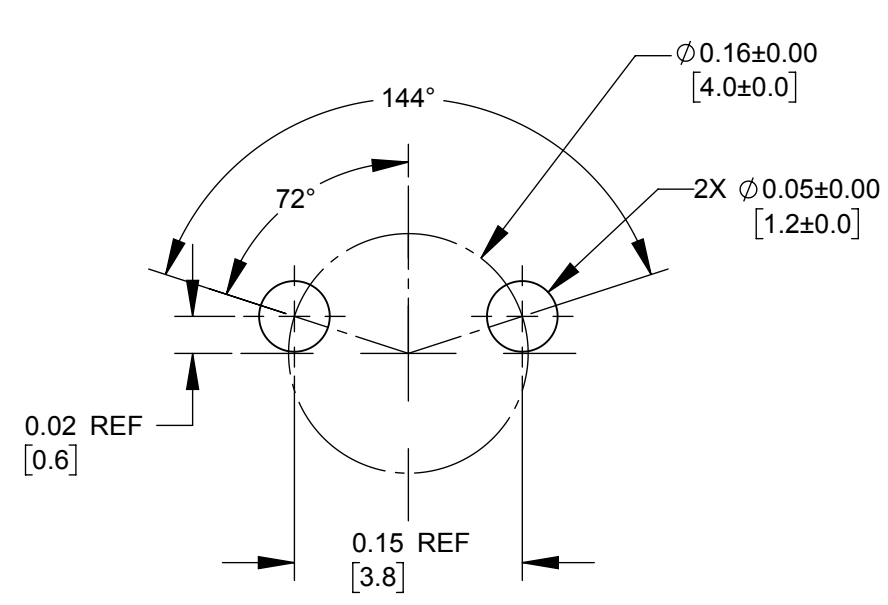
ALL DIMENSIONS FOR REFERENCE ONLY

| Contacts | Wire (awg) | Current Rating (A) at Operating Temperature (°C) |           |           |            |            | Minimum Test Voltage (V rms) | Voltage (V rms) tested per UL2238 |
|----------|------------|--|-----------|-----------|------------|------------|------------------------------|-----------------------------------|
|          |            | 45°C max.  | 65°C max. | 85°C max. | 100°C max. | 110°C max. |                              |                                   |
| 2 #20    | 20         | 10   | 9         | 8         | 7*         | 6          | 1300                         | 125                               |
|          | 22         | 8.5  | 7.5       | 7.5       | 5.5*       | 4.5        |                              |                                   |
|          | 24         | 7  | 6         | 5         | 4.5*       | 3.5        |                              |                                   |
|          | 26         | 4  | 4         | 3.5       | 3.5*       | 2.5        |                              |                                   |
| 3 #20    | 20         | 9.5  | 8.5       | 7.5       | 6.5*       | 5          |                              |                                   |
|          | 22         | 8  | 7         | 6         | 5*         | 4          |                              |                                   |
|          | 24         | 6  | 5.5       | 4.5       | 4*         | 3          |                              |                                   |
|          | 26         | 3.5  | 3.5       | 3         | 3*         | 2.5        |                              |                                   |
| 4 #20    | 20         | 9  | 8         | 7         | 6*         | 5          |                              |                                   |
|          | 22         | 7.5  | 6.5       | 5.5       | 4.5*       | 3.5        |                              |                                   |
|          | 24         | 5  | 4.5       | 4         | 3.5*       | 2.5        |                              |                                   |
|          | 26         | 3  | 3         | 2.5       | 2.5*       | 2          |                              |                                   |
| 5 #20    | 20         | 8  | 7.5       | 6.5       | 5.5*       | 4.5        |                              |                                   |
|          | 22         | 6.5  | 5.5       | 5         | 4*         | 3          |                              |                                   |
|          | 24         | 4.5  | 4         | 3.5       | 3*         | 2.5        |                              |                                   |
|          | 26         | 2.5  | 2.5       | 2         | 2*         | 1.5        |                              |                                   |
| 6-7 #26  | 26         | 2.5  | 2.5       | 2         | 2*         | 1.5        |                              |                                   |
|          | 28         | 2  | 2         | 1.5       | 1.5*       | 1          |                              |                                   |
|          | 30         | 1.5  | 1.5       | 1         | 1*         | .5         |                              |                                   |
|          | 26         | 2  | 2         | 1.5       | 1.5*       | 1          |                              |                                   |
| 8-9 #26  | 28         | 1.5  | 1.5       | 1         | 1*         | .5         |                              |                                   |
|          | 30         | 1  | 1         | .5        | .5*        | .5         |                              |                                   |

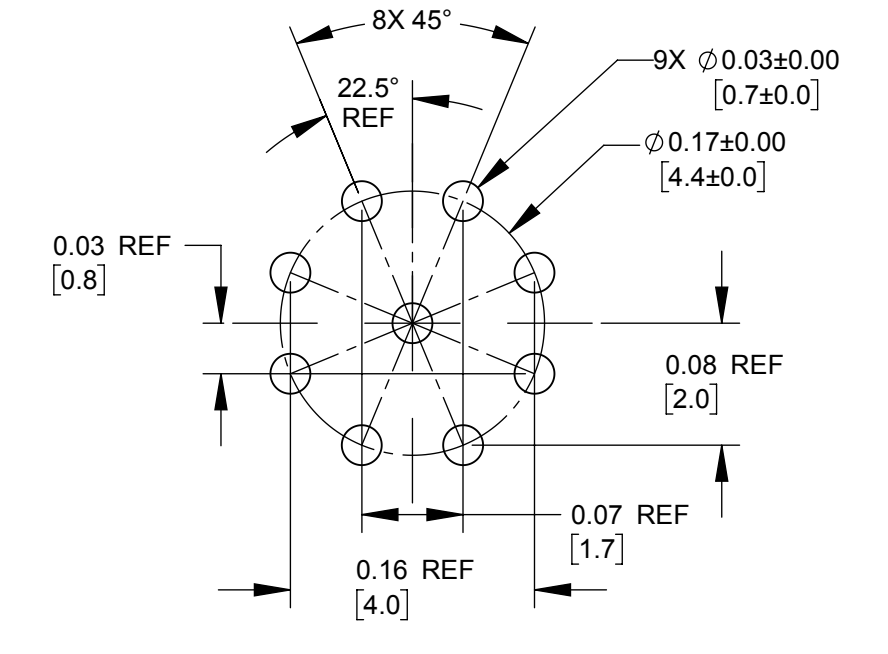
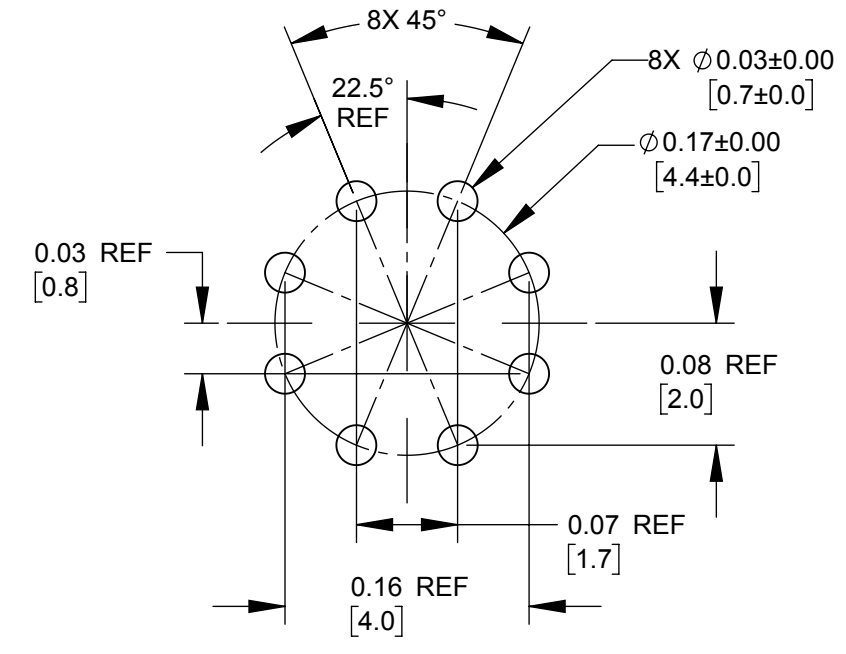
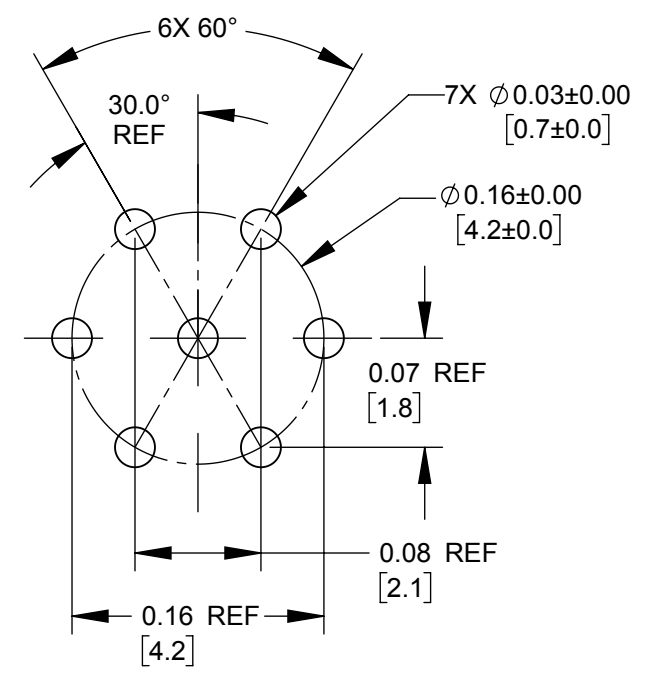
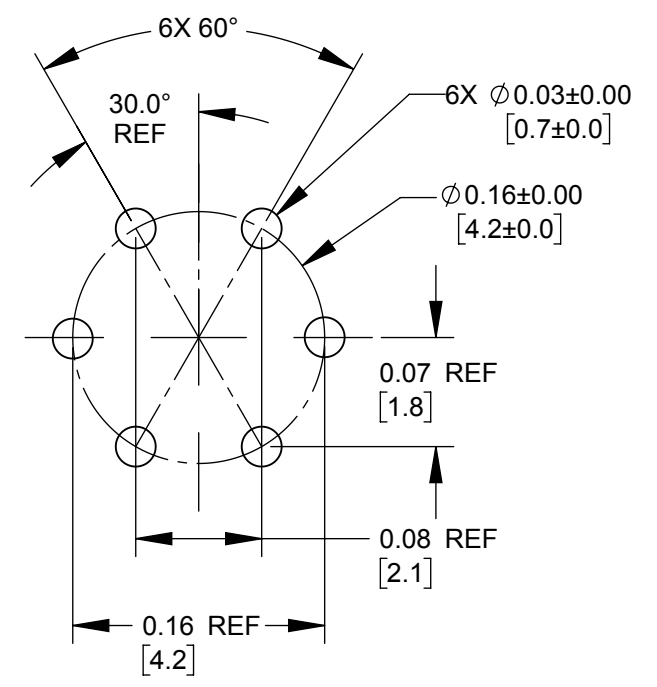
\*Temperature Rise does not exceed 30°C when tested according to UL2238. All other recommended current ratings are based on the Relative Thermal Index of the insulating material.

**CUSTOMER DRAWING**

|                                      |  |  |  |  |  |          |          |       |                  |     |
|--------------------------------------|--|--|--|--|--|----------|----------|-------|------------------|-----|
| UNLESS OTHERWISE SPECIFIED           |  |  |  |  | THIS DRAWING DESCRIBES A DESIGN CONSIDERED PROPRIETARY IN NATURE, DEVELOPED AND MANUFACTURED BY SWITCHCRAFT INC. AND IS RELEASED ON A CONFIDENTIAL BASIS FOR IDENTIFICATION PURPOSES ONLY. |          |          |       |                  |     |
| 1. ALL DIMENSIONS IN INCHES [mm]     |  |  |  |  | SIZE   | WIDTH    | MULT     | LBS/M | TEMPER           |     |
| - TWO PLACE DECIMALS ±0.02 [0.5]     |  |  |  |  | FINISH   |          | MATERIAL |       |                  |     |
| - THREE PLACE DECIMALS ±0.005 [0.13] |  |  |  |  | SPEC No.   |          | SPEC No. |       |                  |     |
|                                      |  |  |  |  | FIRST USED ON  |          | SCALE    |       |                  |     |
|                                      |  |  |  |  | DATE DRAWN   |          | 3:1      |       |                  |     |
|                                      |  |  |  |  | 11/09/16   | BY       | CHKD     | APVD  |                  |     |
|                                      |  |  |  |  | PNK  | PNK      | PNK      | SRC   |                  |     |
|                                      |  |  |  |  |  | 11/09/16 | 11/09/16 |       |                  |     |
|                                      |  |  |  |  | NAME PC, REAR PANEL-MOUNT  |          |          |       | PART No.         | REV |
|                                      |  |  |  |  | TS2 SERIES CONNECTOR, RoHS   |          |          |       | TS2P_-BPE SERIES | 0A  |
| REVISIONS                            |  |  |  |  | DO NOT SCALE DRAWING   |          |          |       |                  |     |



**2 - 5 #20 PIN ARRANGEMENTS**  
**#20 PC TAIL DIA.: 0.039±0.001**  
**RECOMMENDED PCB HOLE SIZE: 0.046±0.001 [1.17±0.03]**



**6 - 9 #26 PIN ARRANGEMENTS**  
**#26 PC TAIL DIA.: 0.020±0.001**  
**RECOMMENDED PCB HOLE SIZE: 0.026±0.001 [0.66±0.03]**

|                        |                                 |           |
|------------------------|---------------------------------|-----------|
| SCALE<br>3:1           | Switchcraft®                    |           |
| DATE DRAWN<br>11/09/16 |                                 |           |
| DRAWN BY<br>PNK        | PART No.<br>TS2P_-BPE SERIES_CD | REV<br>0A |

# Mouser Electronics

Authorized Distributor

Click to View Pricing, Inventory, Delivery & Lifecycle Information:

## Switchcraft:

[TS2P3M20-BP](#) [TS2P3M20-BPE](#) [TS2P4F20-BP](#) [TS2P4F20-BPE](#) [TS2P4M20-BP](#) [TS2P2M20-BPE](#) [TS2P3F20-BP](#)  
[TS2P3F20-BPE](#) [TS2P9F26-BPE](#) [TS2P9M26-BP](#) [TS2P9M26-BPE](#) [TS2P2F20-BP](#) [TS2P2F20-BPE](#) [TS2P2M20-BP](#)  
[TS2P7M26-BPE](#) [TS2P8F26-BP](#) [TS2P8F26-BPE](#) [TS2P8M26-BP](#) [TS2P8M26-BPE](#) [TS2P9F26-BP](#) [TS2P6F26-BPE](#)  
[TS2P6M26-BP](#) [TS2P6M26-BPE](#) [TS2P7F26-BP](#) [TS2P7F26-BPE](#) [TS2P7M26-BP](#) [TS2P4M20-BPE](#) [TS2P5F20-BP](#)  
[TS2P5F20-BPE](#) [TS2P5M20-BP](#) [TS2P5M20-BPE](#) [TS2P6F26-BP](#)



Компания «ЭлектроПласт» предлагает заключение долгосрочных отношений при поставках импортных электронных компонентов на взаимовыгодных условиях!

Наши преимущества:

- Оперативные поставки широкого спектра электронных компонентов отечественного и импортного производства напрямую от производителей и с крупнейших мировых складов;
- Поставка более 17-ти миллионов наименований электронных компонентов;
- Поставка сложных, дефицитных, либо снятых с производства позиций;
- Оперативные сроки поставки под заказ (от 5 рабочих дней);
- Экспресс доставка в любую точку России;
- Техническая поддержка проекта, помощь в подборе аналогов, поставка прототипов;
- Система менеджмента качества сертифицирована по Международному стандарту ISO 9001;
- Лицензия ФСБ на осуществление работ с использованием сведений, составляющих государственную тайну;
- Поставка специализированных компонентов (Xilinx, Altera, Analog Devices, Intersil, Interpoint, Microsemi, Aeroflex, Peregrine, Syfer, Eurofarad, Texas Instrument, Miteq, Cobham, E2V, MA-COM, Hittite, Mini-Circuits, General Dynamics и др.);

Помимо этого, одним из направлений компании «ЭлектроПласт» является направление «Источники питания». Мы предлагаем Вам помощь Конструкторского отдела:

- Подбор оптимального решения, техническое обоснование при выборе компонента;
- Подбор аналогов;
- Консультации по применению компонента;
- Поставка образцов и прототипов;
- Техническая поддержка проекта;
- Защита от снятия компонента с производства.



#### Как с нами связаться

**Телефон:** 8 (812) 309 58 32 (многоканальный)

**Факс:** 8 (812) 320-02-42

**Электронная почта:** [org@eplast1.ru](mailto:org@eplast1.ru)

**Адрес:** 198099, г. Санкт-Петербург, ул. Калинина, дом 2, корпус 4, литера А.