

THIS DRAWING IS UNPUBLISHED. RELEASED FOR PUBLICATION FEB ,2006.
 © COPYRIGHT 2006 By - ALL RIGHTS RESERVED.

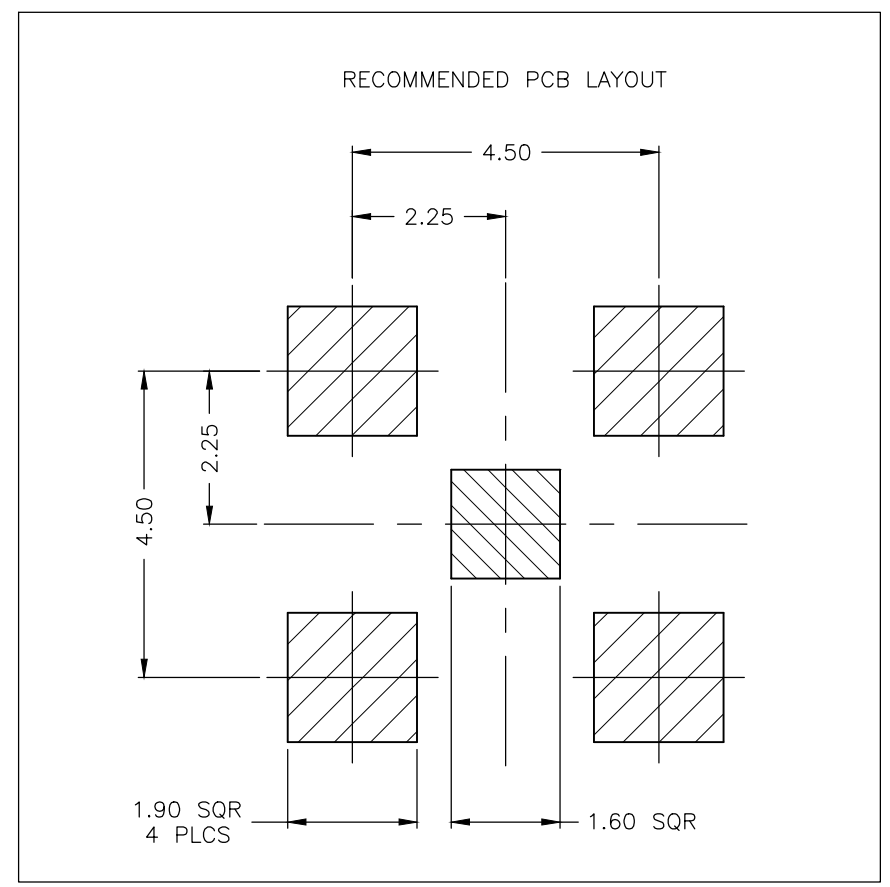
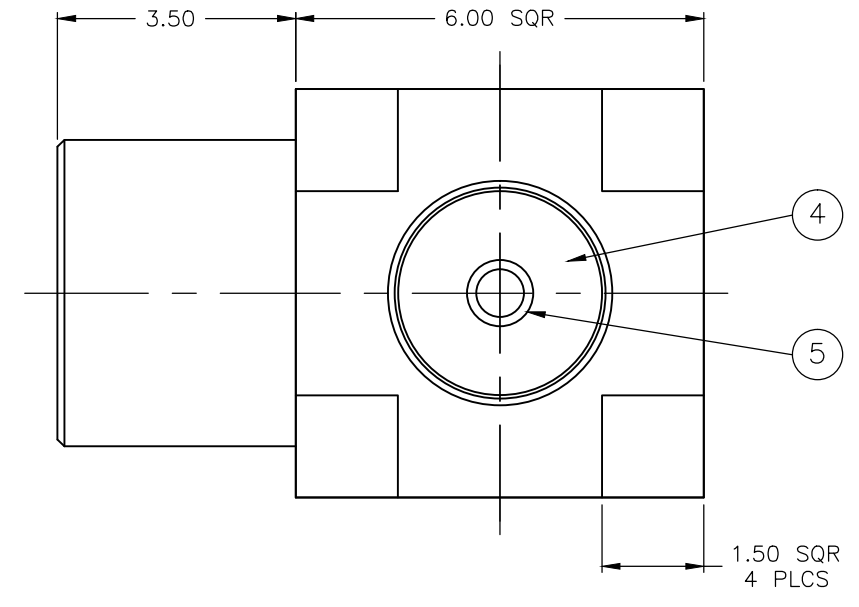
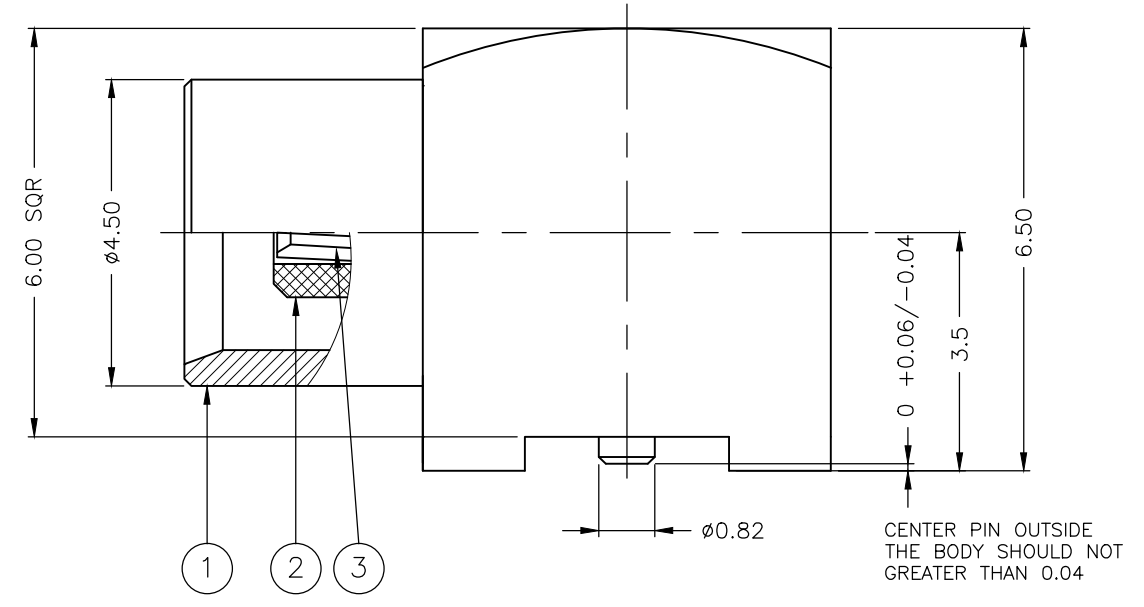
REVISIONS					
P	LTR	DESCRIPTION	DATE	DWN	APVD
	E2	REVISE PER ECR-17-007278	19MAY2017	BW	RS

- NOTES:**
- 1 SINGLE PACKING: ONE CONNECTOR PER LABELED BAG PACKAGED. LABELED PER TEC-107-115
 - 2 TAPE AND REEL PACKAGING OPTION AS PER NOTES 9 AND 16
 - 3 Au PLATING

- 4 ELECTRICAL CHARACTERISTICS**
- FREQUENCY RANGE: DC - 6 GHz
 - NOMINAL IMPEDANCE: 50 Ohm
 - INSULATION RESISTANCE: 500 MOhm
 - WORKING VOLTAGE: 335 Volts RMS at Sea Level
 - DIELECTRIC WITHSTAND VOLTAGE: 1000 Volts RMS Max
 - CONTACT RESISTANCE:
 - CENTER CONTACT: 5.00 mOhm Max
 - OUTER CONTACT: 2.50 mOhm Max
 - VSWR @ 6GHz: 1.5 Max
 - INSERTION LOSS dB @ x 1.0 GHz: 0.10 Max

- 5 MECHANICAL CHARACTERISTICS**
- ENGAGEMENT FORCE: 63 N Max
 - SEPARATION FORCE: 8N Min TO 20N Max
 - DURABILITY: 500 Cycles Min

- 6 ENVIRONMENTAL CHARACTERISTICS**
- OPERATING TEMPERATURE: -40 to +85 °C
7. FOR TECHNICAL DATA REFER TO YOUR LOCAL TYCO ELECTRONICS SALES OFFICE
8. ALL DIMENSIONS ARE NOMINAL FOR REFERENCE ONLY UNLESS OTHERWISE STATED



QTY	PLCS	MATERIAL	DESCRIPTION	ITEM
1	1	BRASS	CONTACT	5
1	1	PTFE	INSULATION	4
1	1	BERYLLIUM COPPER	CONTACT	3
1	1	PTFE	INSULATION	2
1	1	BRASS	BODY	1
6--0	1--0	MATERIAL	DESCRIPTION	ITEM
QUANTITY PER ASSY		PARTS LIST		

THIS DRAWING IS A CONTROLLED DOCUMENT.		DWN	J.SANDWELL	02FEB06
		CHK	S.PARLOW	02FEB06
		APVD	F.WHEELER-KING	02FEB06
		PRODUCT SPEC	-	
		APPLICATION SPEC	-	
		WEIGHT	0	
MATERIAL		SEE TABLE		
FINISH		-		
DIMENSIONS:		TOLERANCES UNLESS OTHERWISE SPECIFIED:		
mm		0 PLC ± -		
		1 PLC ± 0.2		
		2 PLC ± 0.1		
		3 PLC ± -		
		4 PLC ± -		
		ANGLES ± -		
MATERIAL		FINISH		
SEE TABLE		-		
CUSTOMER DRAWING		SCALE NTS		
DWN		J.SANDWELL		
CHK		S.PARLOW		
APVD		F.WHEELER-KING		
PRODUCT SPEC		-		
APPLICATION SPEC		-		
WEIGHT		0		
MATERIAL		SEE TABLE		
FINISH		-		
DIMENSIONS:		TOLERANCES UNLESS OTHERWISE SPECIFIED:		
mm		0 PLC ± -		
		1 PLC ± 0.2		
		2 PLC ± 0.1		
		3 PLC ± -		
		4 PLC ± -		
		ANGLES ± -		
MATERIAL		FINISH		
SEE TABLE		-		
CUSTOMER DRAWING		SCALE NTS		
DWN		J.SANDWELL		
CHK		S.PARLOW		
APVD		F.WHEELER-KING		
PRODUCT SPEC		-		
APPLICATION SPEC		-		
WEIGHT		0		
MATERIAL		SEE TABLE		
FINISH		-		
DIMENSIONS:		TOLERANCES UNLESS OTHERWISE SPECIFIED:		
mm		0 PLC ± -		
		1 PLC ± 0.2		
		2 PLC ± 0.1		
		3 PLC ± -		
		4 PLC ± -		
		ANGLES ± -		
MATERIAL		FINISH		
SEE TABLE		-		
CUSTOMER DRAWING		SCALE NTS		
DWN		J.SANDWELL		
CHK		S.PARLOW		
APVD		F.WHEELER-KING		
PRODUCT SPEC		-		
APPLICATION SPEC		-		
WEIGHT		0		
MATERIAL		SEE TABLE		
FINISH		-		
DIMENSIONS:		TOLERANCES UNLESS OTHERWISE SPECIFIED:		
mm		0 PLC ± -		
		1 PLC ± 0.2		
		2 PLC ± 0.1		
		3 PLC ± -		
		4 PLC ± -		
		ANGLES ± -		
MATERIAL		FINISH		
SEE TABLE		-		
CUSTOMER DRAWING		SCALE NTS		
DWN		J.SANDWELL		
CHK		S.PARLOW		
APVD		F.WHEELER-KING		
PRODUCT SPEC		-		
APPLICATION SPEC		-		
WEIGHT		0		
MATERIAL		SEE TABLE		
FINISH		-		
DIMENSIONS:		TOLERANCES UNLESS OTHERWISE SPECIFIED:		
mm		0 PLC ± -		
		1 PLC ± 0.2		
		2 PLC ± 0.1		
		3 PLC ± -		
		4 PLC ± -		
		ANGLES ± -		
MATERIAL		FINISH		
SEE TABLE		-		
CUSTOMER DRAWING		SCALE NTS		
DWN		J.SANDWELL		
CHK		S.PARLOW		
APVD		F.WHEELER-KING		
PRODUCT SPEC		-		
APPLICATION SPEC		-		
WEIGHT		0		
MATERIAL		SEE TABLE		
FINISH		-		
DIMENSIONS:		TOLERANCES UNLESS OTHERWISE SPECIFIED:		
mm		0 PLC ± -		
		1 PLC ± 0.2		
		2 PLC ± 0.1		
		3 PLC ± -		
		4 PLC ± -		
		ANGLES ± -		
MATERIAL		FINISH		
SEE TABLE		-		
CUSTOMER DRAWING		SCALE NTS		
DWN		J.SANDWELL		
CHK		S.PARLOW		
APVD		F.WHEELER-KING		
PRODUCT SPEC		-		
APPLICATION SPEC		-		
WEIGHT		0		
MATERIAL		SEE TABLE		
FINISH		-		
DIMENSIONS:		TOLERANCES UNLESS OTHERWISE SPECIFIED:		
mm		0 PLC ± -		
		1 PLC ± 0.2		
		2 PLC ± 0.1		
		3 PLC ± -		
		4 PLC ± -		
		ANGLES ± -		
MATERIAL		FINISH		
SEE TABLE		-		
CUSTOMER DRAWING		SCALE NTS		
DWN		J.SANDWELL		
CHK		S.PARLOW		
APVD		F.WHEELER-KING		
PRODUCT SPEC		-		
APPLICATION SPEC		-		
WEIGHT		0		
MATERIAL		SEE TABLE		
FINISH		-		
DIMENSIONS:		TOLERANCES UNLESS OTHERWISE SPECIFIED:		
mm		0 PLC ± -		
		1 PLC ± 0.2		
		2 PLC ± 0.1		
		3 PLC ± -		
		4 PLC ± -		
		ANGLES ± -		
MATERIAL		FINISH		
SEE TABLE		-		
CUSTOMER DRAWING		SCALE NTS		
DWN		J.SANDWELL		
CHK		S.PARLOW		
APVD		F.WHEELER-KING		
PRODUCT SPEC		-		
APPLICATION SPEC		-		
WEIGHT		0		
MATERIAL		SEE TABLE		
FINISH		-		
DIMENSIONS:		TOLERANCES UNLESS OTHERWISE SPECIFIED:		
mm		0 PLC ± -		
		1 PLC ± 0.2		
		2 PLC ± 0.1		
		3 PLC ± -		
		4 PLC ± -		
		ANGLES ± -		
MATERIAL		FINISH		
SEE TABLE		-		
CUSTOMER DRAWING		SCALE NTS		
DWN		J.SANDWELL		
CHK		S.PARLOW		
APVD		F.WHEELER-KING		
PRODUCT SPEC		-		
APPLICATION SPEC		-		
WEIGHT		0		
MATERIAL		SEE TABLE		
FINISH		-		
DIMENSIONS:		TOLERANCES UNLESS OTHERWISE SPECIFIED:		
mm		0 PLC ± -		
		1 PLC ± 0.2		
		2 PLC ± 0.1		
		3 PLC ± -		
		4 PLC ± -		
		ANGLES ± -		
MATERIAL		FINISH		
SEE TABLE		-		
CUSTOMER DRAWING		SCALE NTS		
DWN		J.SANDWELL		
CHK		S.PARLOW		
APVD		F.WHEELER-KING		
PRODUCT SPEC		-		
APPLICATION SPEC		-		
WEIGHT		0		
MATERIAL		SEE TABLE		
FINISH		-		
DIMENSIONS:		TOLERANCES UNLESS OTHERWISE SPECIFIED:		
mm		0 PLC ± -		
		1 PLC ± 0.2		
		2 PLC ± 0.1		
		3 PLC ± -		
		4 PLC ± -		
		ANGLES ± -		
MATERIAL		FINISH		
SEE TABLE		-		
CUSTOMER DRAWING		SCALE NTS		
DWN		J.SANDWELL		
CHK		S.PARLOW		
APVD		F.WHEELER-KING		
PRODUCT SPEC		-		
APPLICATION SPEC		-		
WEIGHT		0		
MATERIAL		SEE TABLE		
FINISH		-		
DIMENSIONS:		TOLERANCES UNLESS OTHERWISE SPECIFIED:		
mm		0 PLC ± -		
		1 PLC ± 0.2		
		2 PLC ± 0.1		
		3 PLC ± -		
		4 PLC ± -		
		ANGLES ± -		
MATERIAL		FINISH		
SEE TABLE		-		
CUSTOMER DRAWING		SCALE NTS		
DWN		J.SANDWELL		
CHK		S.PARLOW		
APVD		F.WHEELER-KING		
PRODUCT SPEC		-		
APPLICATION SPEC		-		
WEIGHT		0		
MATERIAL		SEE TABLE		
FINISH		-		
DIMENSIONS:		TOLERANCES UNLESS OTHERWISE SPECIFIED:		
mm		0 PLC ± -		
		1 PLC ± 0.2		
		2 PLC ± 0.1		
		3 PLC ± -		
		4 PLC ± -		
		ANGLES ± -		
MATERIAL		FINISH		
SEE TABLE		-		
CUSTOMER DRAWING		SCALE NTS		
DWN		J.SANDWELL		
CHK		S.PARLOW		
APVD		F.WHEELER-KING		
PRODUCT SPEC		-		
APPLICATION SPEC		-		
WEIGHT		0		
MATERIAL		SEE TABLE		
FINISH		-		
DIMENSIONS:		TOLERANCES UNLESS OTHERWISE SPECIFIED:		
mm		0 PLC ± -		
		1 PLC ± 0.2		
		2 PLC ± 0.1		
		3 PLC ± -		
		4 PLC ± -		
		ANGLES ± -		
MATERIAL		FINISH		
SEE TABLE		-		
CUSTOMER DRAWING		SCALE NTS		
DWN		J.SANDWELL		
CHK		S.PARLOW		
APVD		F.WHEELER-KING		
PRODUCT SPEC		-		
APPLICATION SPEC		-		
WEIGHT		0		
MATERIAL		SEE TABLE		
FINISH		-		
DIMENSIONS:		TOLERANCES UNLESS OTHERWISE SPECIFIED:		
mm		0 PLC ± -		
		1 PLC ± 0.2		
		2 PLC ± 0.1		
		3 PLC ± -		
		4 PLC ± -		
		ANGLES ± -		
MATERIAL		FINISH		
SEE TABLE		-		
CUSTOMER DRAWING		SCALE NTS		
DWN		J.SANDWELL		
CHK		S.PARLOW		
APVD		F.WHEELER-KING		
PRODUCT SPEC		-		
APPLICATION SPEC		-		
WEIGHT		0		
MATERIAL		SEE TABLE		
FINISH		-		
DIMENSIONS:		TOLERANCES UNLESS OTHERWISE SPECIFIED:		
mm		0 PLC ± -		
		1 PLC ± 0.2		
		2 PLC ± 0.1		
		3 PLC ± -		
		4 PLC ± -		
		ANGLES ± -		
MATERIAL		FINISH		
SEE TABLE		-		
CUSTOMER DRAWING		SCALE NTS		
DWN		J.SANDWELL		
CHK		S.PARLOW		
APVD		F.WHEELER-KING		
PRODUCT SPEC		-		
APPLICATION SPEC		-		
WEIGHT		0		
MATERIAL		SEE TABLE		
FINISH		-		
DIMENSIONS:		TOLERANCES UNLESS OTHERWISE SPECIFIED:		
mm		0 PLC ± -		
		1 PLC ± 0.2		
		2 PLC ± 0.1		
		3 PLC ± -		
		4 PLC ± -		
		ANGLES ± -		
MATERIAL		FINISH		
SEE TABLE		-		
CUSTOMER DRAWING		SCALE NTS		
DWN		J.SANDWELL		
CHK		S.PARLOW		
APVD		F.WHEELER-KING		
PRODUCT SPEC		-		
APPLICATION SPEC		-		
WEIGHT		0		
MATERIAL		SEE TABLE		
FINISH		-		
DIMENSIONS:		TOLERANCES UNLESS OTHERWISE SPECIFIED:		
mm		0 PLC ± -		
		1 PLC ± 0.2		
		2 PLC ± 0.1		
		3 PLC ± -		
		4 PLC ± -		
		ANGLES ± -		
MATERIAL		FINISH		
SEE TABLE		-		
CUSTOMER DRAWING		SCALE NTS		
DWN		J.SANDWELL		
CHK		S.PARLOW		
APVD		F.WHEELER-KING		
PRODUCT SPEC		-		
APPLICATION SPEC		-		
WEIGHT		0		
MATERIAL		SEE TABLE		
FINISH		-		
DIMENSIONS:		TOLERANCES UNLESS OTHERWISE SPECIFIED:		
mm		0 PLC ± -		
		1 PLC ± 0.2		
		2 PLC ± 0.1		
		3 PLC ± -		
		4 PLC ± -		
		ANGLES ± -		
MATERIAL		FINISH		
SEE TABLE		-		
CUSTOMER DRAWING		SCALE NTS		
DWN		J.SANDWELL		
CHK		S.PARLOW		
APVD		F.WHEELER-KING		
PRODUCT SPEC		-		
APPLICATION SPEC		-		
WEIGHT		0		
MATERIAL		SEE TABLE		
FINISH		-		
DIMENSIONS:		TOLERANCES UNLESS OTHERWISE		

THIS DRAWING IS UNPUBLISHED.

RELEASED FOR PUBLICATION FEB , 2006.

REVISIONS

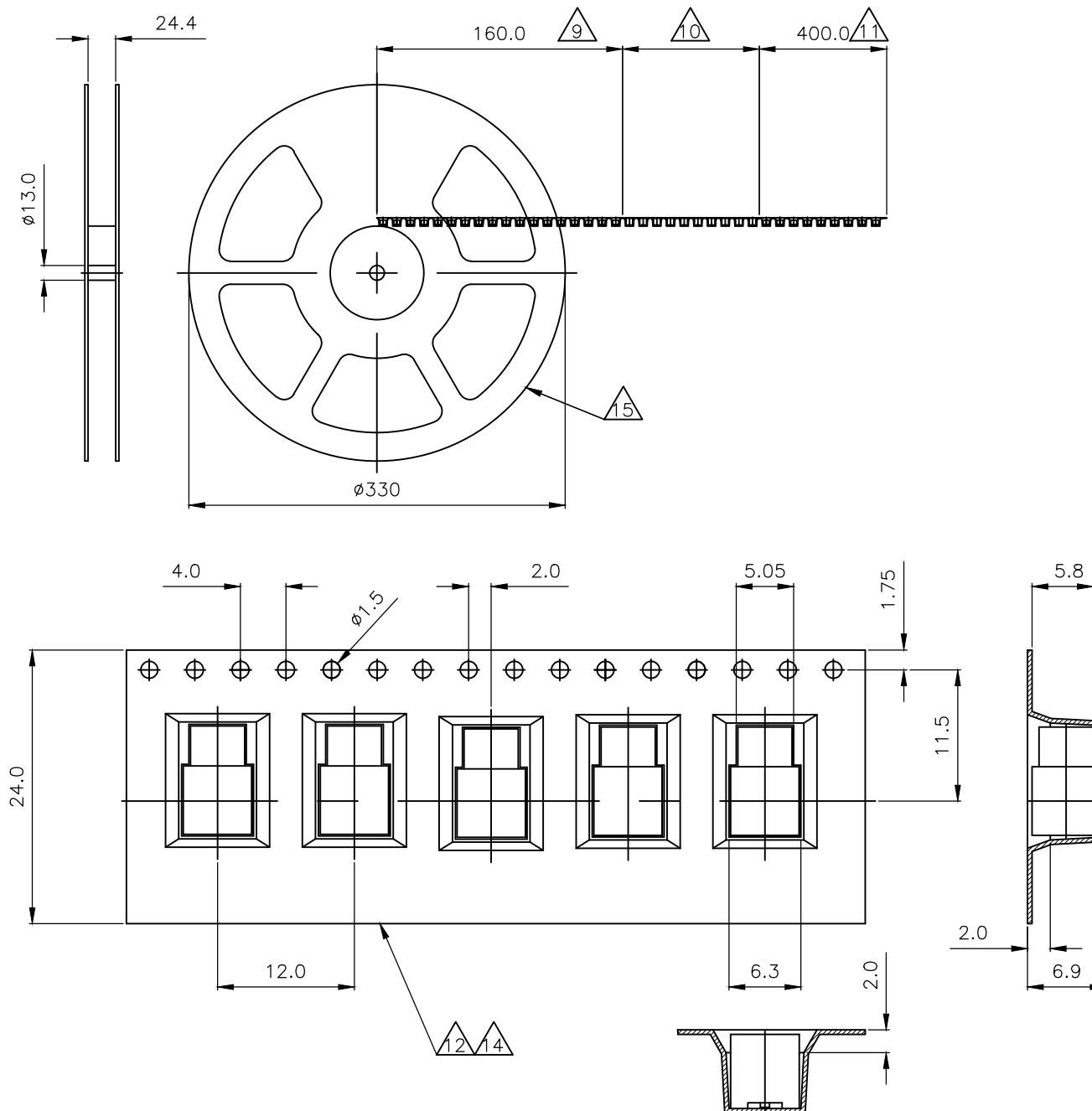
© COPYRIGHT 2006 By -


ALL RIGHTS RESERVED.

P	LTR	DESCRIPTION	DATE	DWN	APVD
-	-	SEE SHEET 1	-	-	-

NOTES (CONT):

- 9 LAST RUNNING ACCORDING TO IEC 60286-3
- 10 BLISTER BELT FILLED WITH PARTS
- 11 400mm EMPTY BLISTER BELT, SEALED WITH COVER TAPE
- 12 BLISTER BELT ACCORDING TO IEC 60286-3
- 13 UNIT PER REEL: 750 PIECES
- 14 VOLUME-CONDUCTIVE MATERIAL
- 15 MADE FROM POLYSTYRENE
- 16 SMD-STRIP-PACKAGING ACCORDING TO IEC 60286-2



THIS DRAWING IS A CONTROLLED DOCUMENT.		DWN J.SANDWELL 02FEB06	 TE Connectivity														
DIMENSIONS: mm		CHK S.PARLOW 02FEB06															
TOLERANCES UNLESS OTHERWISE SPECIFIED:		APVD F.WHEELER-KING 02FEB06	NAME MCX SURFACE MOUNT ELBOW PCB SOCKET 50 OHM														
<table border="0"> <tr><td>0 PLC</td><td>± -</td></tr> <tr><td>1 PLC</td><td>± -</td></tr> <tr><td>2 PLC</td><td>± -</td></tr> <tr><td>3 PLC</td><td>± -</td></tr> <tr><td>4 PLC</td><td>± -</td></tr> <tr><td>ANGLES</td><td>± -</td></tr> </table>		0 PLC	± -	1 PLC	± -	2 PLC	± -	3 PLC	± -	4 PLC	± -	ANGLES	± -	PRODUCT SPEC -	APPLICATION SPEC -		
0 PLC	± -																
1 PLC	± -																
2 PLC	± -																
3 PLC	± -																
4 PLC	± -																
ANGLES	± -																
MATERIAL SEE TABLE	FINISH -	WEIGHT -	SIZE A3	CAGE CODE 00779	DRAWING NO C-1337583	RESTRICTED TO -											
CUSTOMER DRAWING			SCALE NTS	SHEET 2 OF 2	REV E2												



Компания «ЭлектроПласт» предлагает заключение долгосрочных отношений при поставках импортных электронных компонентов на взаимовыгодных условиях!

Наши преимущества:

- Оперативные поставки широкого спектра электронных компонентов отечественного и импортного производства напрямую от производителей и с крупнейших мировых складов;
- Поставка более 17-ти миллионов наименований электронных компонентов;
- Поставка сложных, дефицитных, либо снятых с производства позиций;
- Оперативные сроки поставки под заказ (от 5 рабочих дней);
- Экспресс доставка в любую точку России;
- Техническая поддержка проекта, помощь в подборе аналогов, поставка прототипов;
- Система менеджмента качества сертифицирована по Международному стандарту ISO 9001;
- Лицензия ФСБ на осуществление работ с использованием сведений, составляющих государственную тайну;
- Поставка специализированных компонентов (Xilinx, Altera, Analog Devices, Intersil, Interpoint, Microsemi, Aeroflex, Peregrine, Syfer, Eurofarad, Texas Instrument, Miteq, Cobham, E2V, MA-COM, Hittite, Mini-Circuits, General Dynamics и др.);

Помимо этого, одним из направлений компании «ЭлектроПласт» является направление «Источники питания». Мы предлагаем Вам помощь Конструкторского отдела:

- Подбор оптимального решения, техническое обоснование при выборе компонента;
- Подбор аналогов;
- Консультации по применению компонента;
- Поставка образцов и прототипов;
- Техническая поддержка проекта;
- Защита от снятия компонента с производства.



Как с нами связаться

Телефон: 8 (812) 309 58 32 (многоканальный)

Факс: 8 (812) 320-02-42

Электронная почта: org@eplast1.ru

Адрес: 198099, г. Санкт-Петербург, ул. Калинина, дом 2, корпус 4, литера А.