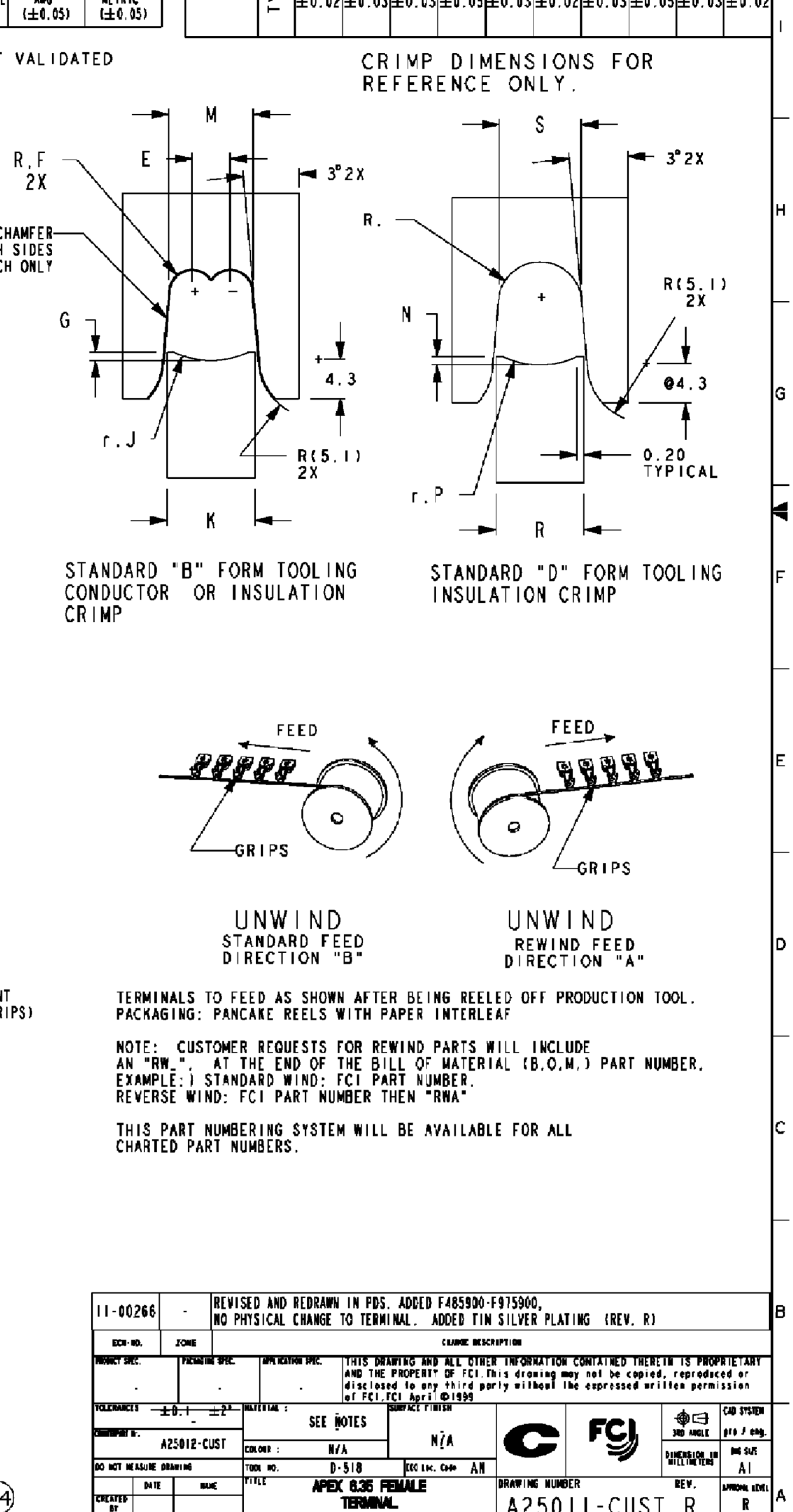
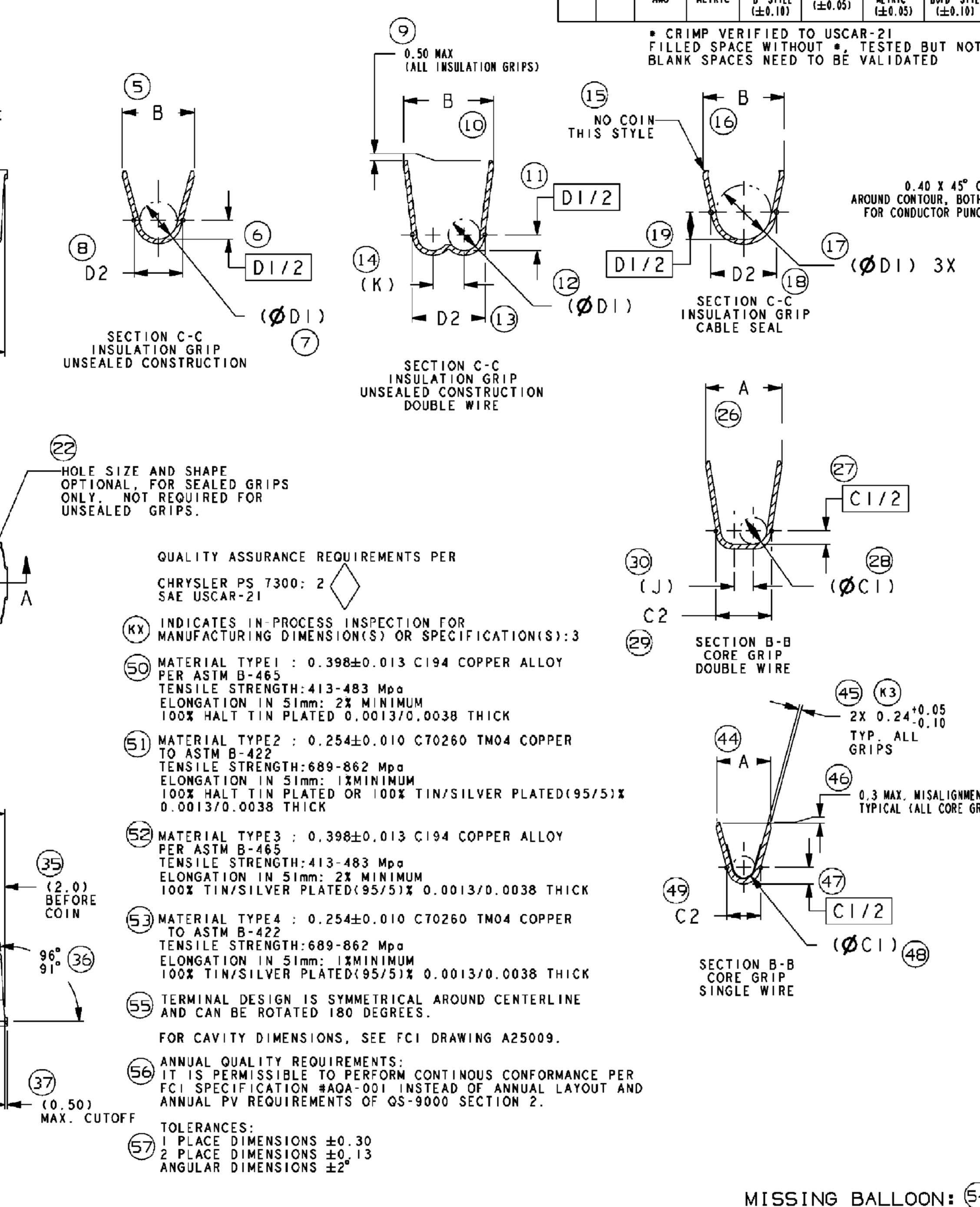
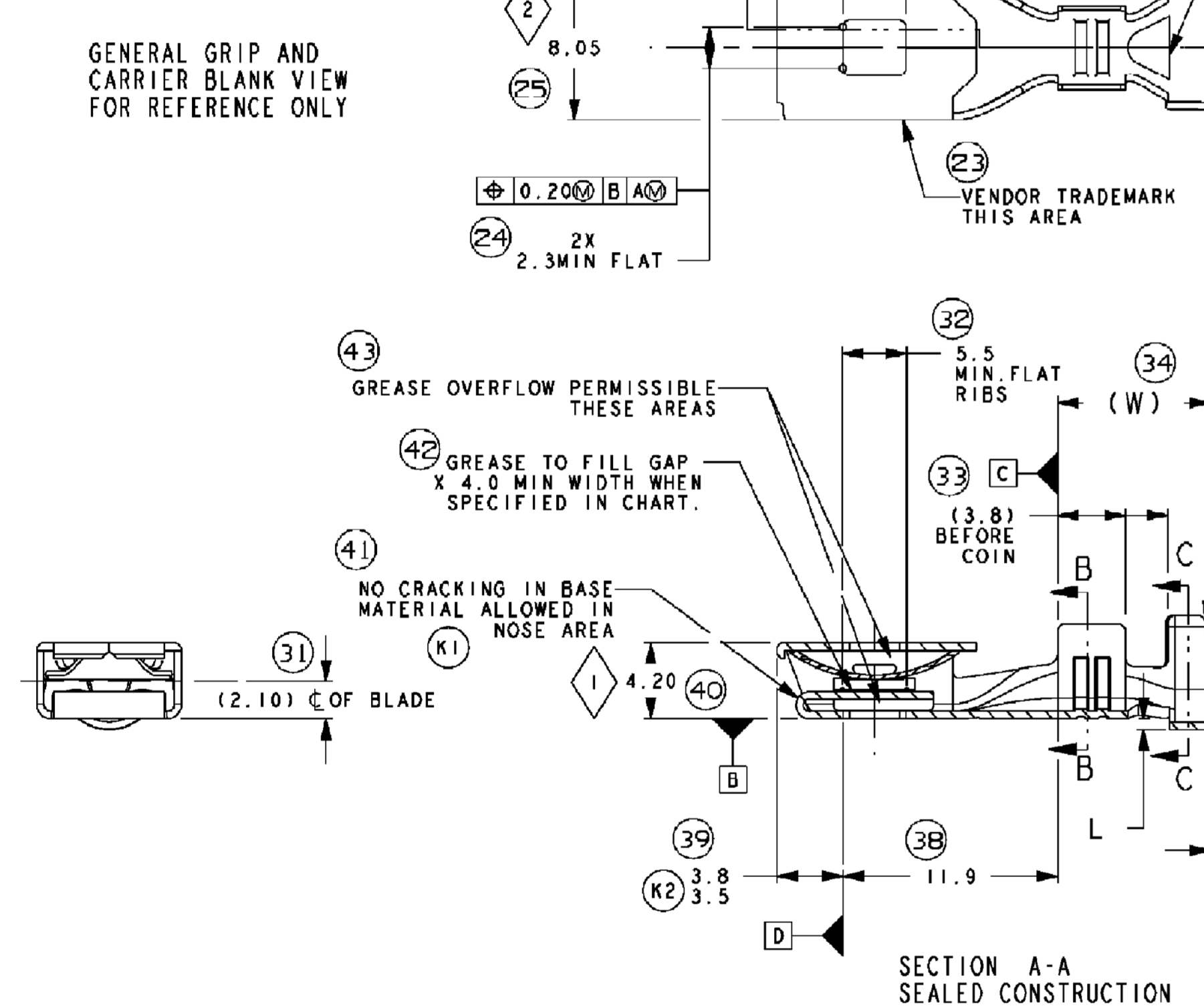
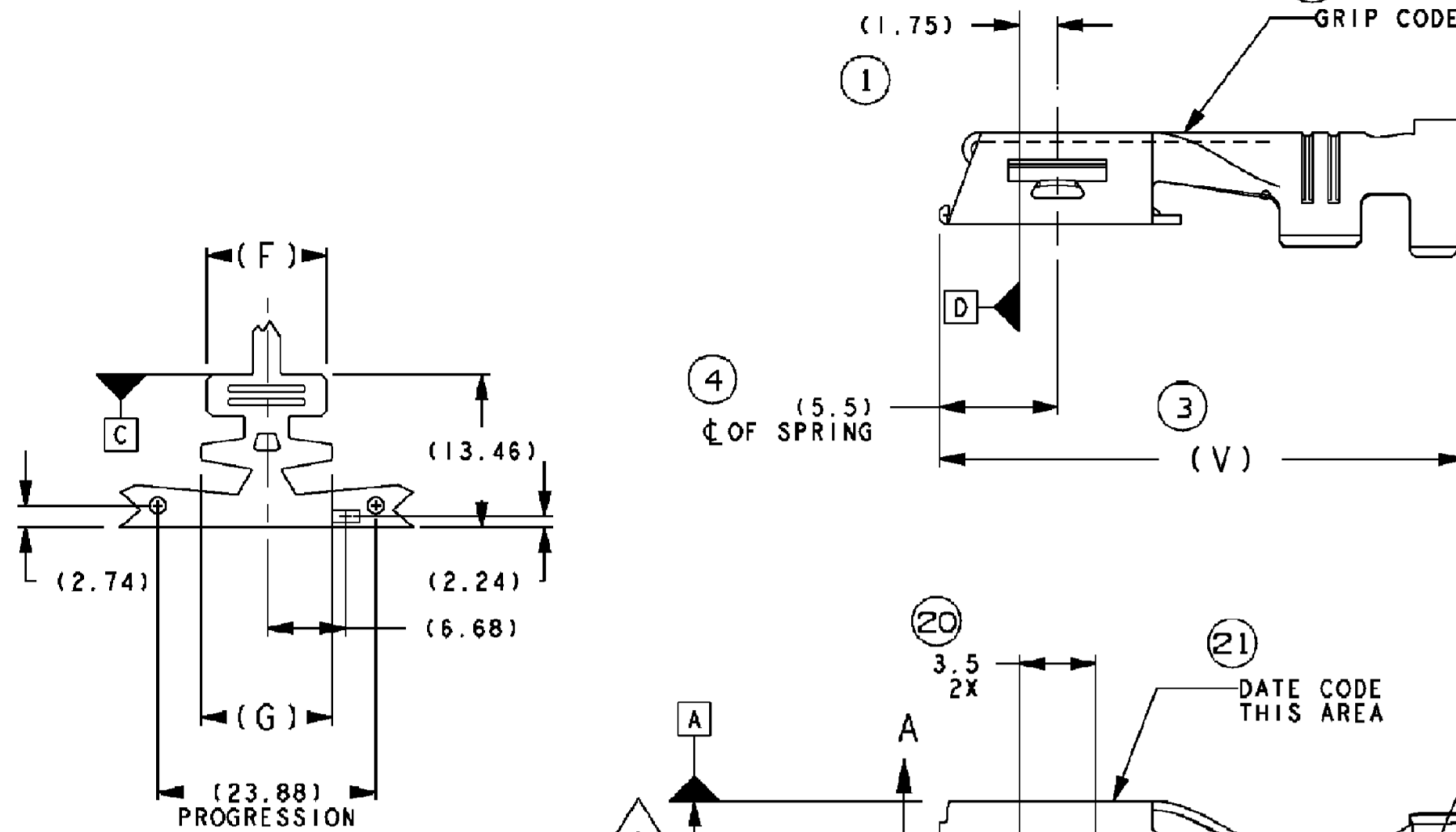


REV	DATE	BY	CHKD	ZONE	REVISION HISTORY	AUTH	DR	APVD	APVD
05MR13	R	05	-	-	ALL PARTS - RELEASED AND ADDED INSPECTION SYMBOLS/BALLOONS	421188	JEG	JAA	061
19MR13	R	06	-	-	ALL PARTS - ADDED RECTANGULAR SLOT OPTIONAL CONSTRUCTION VIEW. PROVIDED DELPHI MSPEC FOR SPRING MATERIAL AND CONSOLIDATED ALL SPRING MATERIAL TO TYPE 4 ONLY. (#4 WILL BE USED INSTEAD #2 ON ORIGINAL MVL DWGS)	421812	JEG	JAA	06B
25MR13	R	07	-	-	ALL PARTS - REMOVED YIELD STRENGTH INFO FROM MATERIAL NOTES	421873	JEG	JAA	06B
02AP13	R	08	-	-	13974918 & 10863886 - DIM "G" WAS 17.31 13658862 & 15509072 - DIM "G" WAS 15.41 MVL P/N 54001103 - DIM "G" WAS 18.71 MVL P/N 54001312 - DIM "G" WAS 13.4	421968	JEG	JAA	06B
24MY13	R	09	-	-	13979943, 13979949, 13979954-56, 15543314-16 AND 15547091-94 - RELEASED; ALL PARTS - REMOVED NOTE FOR INSPECTION SYMBOL/BALLOON #54 AND REVISED CHART LAYOUT	422730	CGD	JAA	06B
01OC13	R	10	-	-	33121454 - RELEASED; 13969991 WAS ON DWG 13963267 SHT 011 15547091 - OBSOLETE; 13945733-34 - UPDATED MVL PART NUMBER CALL OUT	423996	CGD	JAA	06B
03OC13	R	11	-	-	33121904 - RELEASED	424028	CGD	JAA	06B

CHART NOTES:

- \*1 - AFTER PART NUMBER INDICATES TYPE 1 MATERIAL FOR TERMINAL
- \*2 - AFTER PART NUMBER INDICATES TYPE 2 OF 4 MATERIAL FOR SPRING
- \*3 - AFTER PART NUMBER INDICATES TYPE 3 MATERIAL FOR TERMINAL
- \*4 - AFTER PART NUMBER INDICATES TYPE 4 MATERIAL FOR SPRING

PART NUMBERS WITH LINES THRU THEM HAVE NOT BEEN TOOLED YET.

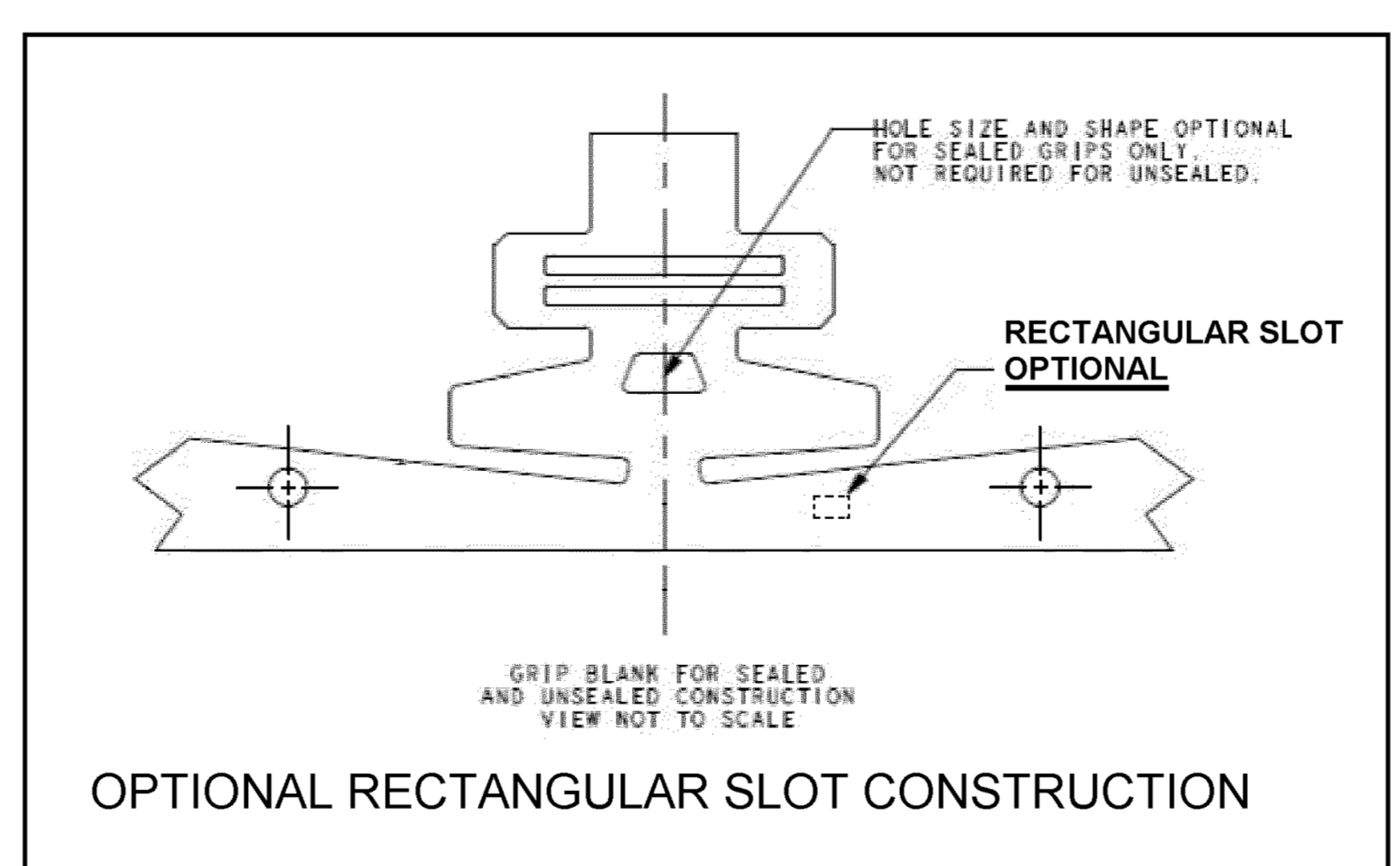


QUALITY ASSURANCE REQUIREMENTS PER CHRYSLER PS 7300: 2 SAE USCAR-21

- (KX) INDICATES IN-PROCESS INSPECTION FOR MANUFACTURING DIMENSIONS OR SPECIFICATIONS: 3
- (50) MATERIAL TYPE 1: 0.398±0.013 C194 COPPER ALLOY PER ASTM B-485  
TENSILE STRENGTH: 413-483 Mpa  
ELONGATION IN 51mm: 2% MINIMUM  
100% HALT TIN PLATED 0.0013/0.0038 THICK
- (51) MATERIAL TYPE 2: 0.254±0.010 CT0260 TM04 COPPER TO ASTM B-422  
TENSILE STRENGTH: 689-862 Mpa  
ELONGATION IN 51mm: 1% MINIMUM  
100% HALT TIN PLATED OR 100% TIN/SILVER PLATED(95/5)X 0.0013/0.0038 THICK
- (52) MATERIAL TYPE 3: 0.398±0.013 C194 COPPER ALLOY PER ASTM B-485  
TENSILE STRENGTH: 413-483 Mpa  
ELONGATION IN 51mm: 2% MINIMUM  
100% TIN/SILVER PLATED(95/5)X 0.0013/0.0038 THICK
- (53) MATERIAL TYPE 4: 0.254±0.010 CT0260 TM04 COPPER TO ASTM B-422  
TENSILE STRENGTH: 689-862 Mpa  
ELONGATION IN 51mm: 1% MINIMUM  
100% TIN/SILVER PLATED(95/5)X 0.0013/0.0038 THICK
- (55) TERMINAL DESIGN IS SYMMETRICAL AROUND CENTERLINE AND CAN BE ROTATED 180 DEGREES.
- (56) ANNUAL QUALITY REQUIREMENTS: IT IS PERMISSIBLE TO PERFORM CONTINUOUS CONFORMANCE PER FCJ SPECIFICATION #AQA-01 INSTEAD OF ANNUAL LAYOUT AND ANNUAL PV REQUIREMENTS OF QS-9000 SECTION 2.
- (57) TOLERANCES:  
1 PLACE DIMENSIONS ±0.30  
2 PLACE DIMENSIONS ±0.13  
ANGULAR DIMENSIONS ±2°

MISSING BALLOON: 54  
LAST BALLOON: 57

REVISED AND REWRAN IN FCS ADDED F48590-F49590. NO PHYSICAL CHANGE TO TERMINAL. ADDED TIN SILVER PLATING (REV. R)	CRIMP HEIGHT
DATE: 02/11/13	DATE: 02/11/13
DESIGNED BY: JEG	DESIGNED BY: JEG
CHECKED BY: JAA	CHECKED BY: JAA
APPROVED BY: JAA	APPROVED BY: JAA
DATE: 02/11/13	DATE: 02/11/13
PROJECT: APEX BLUE REWIND	PROJECT: APEX BLUE REWIND
TERMINAL: TERMINAL	TERMINAL: TERMINAL
REV: REV	REV: REV
DATE: DATE	DATE: DATE
BY: BY	BY: BY
CHKD: CHKD	CHKD: CHKD
APPROVED: APPROVED	APPROVED: APPROVED
DATE: DATE	DATE: DATE
FILE NAME: A25011-CUST	FILE NAME: A25011-CUST
SECRET	SECRET



OPTIONAL RECTANGULAR SLOT CONSTRUCTION

REV	DATE	BY	CHKD	ZONE	REVISION HISTORY	AUTH	DR	APVD	APVD	
54001026/F760310	R	13945734	OJ	AE	-	-	-	13843152	8917	M5301000
54001026RWC	R	-	-	-	15531440	OJ	AD	13945734	-	-
54001223/F660310	R	13945733	OJ	E	-	-	-	13600463	8917	M5301000
54001223RWC/F660310RWC	R	-	-	-	13945733	OJ	AD	13945733	-	-
54001622/F560310	R	13945735	OJ	AD	-	-	-	13965582	8917	M5301000
54001622RWA/F560310RWA	R	-	-	-	33121454	OJ	AD	13945735	-	-
54001871	R	15547091	OJ	AA	-	-	-	13872174	8917	M5301000
54001021	R	13690848	OJ	AE	-	-	-	10863886	8917	M5301000
54001021RWA	R	-	-	-	15547092	OJ	AA	13690848	-	-
F010510	R	15543316	OJ	-	-	-	-	13843152	7616	M5797004
F010510RWC	R	-	-	-	13979955	OJ	-	15543316	-	-
F700510	R	15543315	OJ	-	-	-	-	13600463	7616	M5797004
F700510RWC	R	-	-	-	13979949	OJ	-	15543315	-	-
F600510	R	15543314	OJ	-	-	-	-	13965582	7616	M5797004
F600510RWC	R	-	-	-	13979943	OJ	-	15543314	-	-
F900510	R	15547093	OJ	-	-	-	-	10863886	7616	M5797004
F900510RWC	R	-	-	-	13979956	OJ	-	15547093	-	-
F800510	R	15547094	OJ	-	-	-	-	13658862	7616	M5797004
F800510RWC	R	-	-	-	13979954	OJ	-	15547094	-	-

REV	DATE	BY	CHKD	ZONE	REVISION HISTORY	AUTH	DR	APVD	APVD
54001022/54001007	R	13843152	OJ	AD	-	-	-	M6605H98	M6584H90
54001004/54001023	R	10863886	OJ	AD	-	-	-	M6605H98	M6584H90
54001004RWA	R	-	-	-	15526157	OJ	AD	10863886	-
54001222/F409110	R	13600463	OJ	AK	-	-	-	M6605H98	M6584H90
54001224/54001200R	R	13658862	OJ	AD	-	-	-	M6605H98	M6584H90
54001224RWA/54001200RWA	R	-	-	-	33121904	OJ	-	13658862	-
54001621/F286010	R	13965582	OJ	AD	-	-	-	M6605H98	M6584H90
54001623	R	13673119	OJ	AJ	-	-	-	M6605H98	M6584H90
54001870	R	13872174	OJ	AG	-	-	-	M6605H98	M6584H90
F285900	R	15509072	OJ	AD	-	-	-	M6606H98	M6586H90
F185900	R	15509071	OJ	AD	-	-	-	M6606H98	M6586H90
F385900	R	13874918	OJ	AE	-	-	-	M6605H98	M6586H90

NOTES

- 1. UNLESS OTHERWISE SPECIFIED AND/OR INDICATED: DIMENSIONS ARE TO FACE OF VIEW SHOWN AND AUTOMATICALLY ROUNDED BY COMPUTER FOR INSPECTION (SEE MATH MODEL FOR PRECISE DIMENSIONS). FOR ALL OTHER DIMENSIONS NOT SHOWN BUT REQUIRED FOR TOOL BUILD, SEE MATH MODEL FOR PRECISE TOOL PATH DATA.

DELPHI  
DELPHI PACKARD ELECTRICAL/ELECTRONIC ARCHITECTURE  
WARREN, OH  
COPYRIGHT 2013 DELPHI CORPORATION AND/OR ITS AFFILIATES. ALL RIGHTS RESERVED.  
THIS DRAWING IS THE PROPERTY OF DELPHI CORPORATION AND CONTAINS CONFIDENTIAL INFORMATION. THE REPRODUCTION, DISTRIBUTION AND UTILIZATION OF THIS DOCUMENT OR ITS RELATED CONTENT, DATA, AS WELL AS COMMUNICATION OF ANY CONTENT TO OTHERS, WITHOUT EXPRESS AUTHORIZATION, IS PROHIBITED.

DATE: 02/11/13

DR: JAVIER ESQUIVEL  
APV02: J.S. ALVARADO  
APV03: GERARDO GOMEZ I.  
APV04:

05MR13  
05MR13  
05MR13

UNLESS OTHERWISE SPECIFIED  
THIS DOCUMENT IS IN ACCORDANCE WITH ASME Y14.5M-1994 AS MODIFIED BY THE LOCAL DIMENSIONING AND TOLERANCING (ASME) STANDARD. SEPARATE PATTERNS OF FEATURES MAY BE DRAWN SEPARATELY, IRRESPECTIVE OF DATUM REFERENCES.

ALL DIMENSIONS ARE IN MILLIMETERS

REFERENCE:

DRAWING NAME: TAXI TERM F 6.35 APEX

DRAWING NUMBER: 13707625

SIZE: AD NONE  
SCALE: 1 OF 1  
FRAME NO: 1 OF 1  
SHEET NO: 1 OF 1  
STG: R  
N/P: -



Компания «ЭлектроПласт» предлагает заключение долгосрочных отношений при поставках импортных электронных компонентов на взаимовыгодных условиях!

Наши преимущества:

- Оперативные поставки широкого спектра электронных компонентов отечественного и импортного производства напрямую от производителей и с крупнейших мировых складов;
- Поставка более 17-ти миллионов наименований электронных компонентов;
- Поставка сложных, дефицитных, либо снятых с производства позиций;
- Оперативные сроки поставки под заказ (от 5 рабочих дней);
- Экспресс доставка в любую точку России;
- Техническая поддержка проекта, помощь в подборе аналогов, поставка прототипов;
- Система менеджмента качества сертифицирована по Международному стандарту ISO 9001;
- Лицензия ФСБ на осуществление работ с использованием сведений, составляющих государственную тайну;
- Поставка специализированных компонентов (Xilinx, Altera, Analog Devices, Intersil, Interpoint, Microsemi, Aeroflex, Peregrine, Syfer, Eurofarad, Texas Instrument, Miteq, Cobham, E2V, MA-COM, Hittite, Mini-Circuits, General Dynamics и др.);

Помимо этого, одним из направлений компании «ЭлектроПласт» является направление «Источники питания». Мы предлагаем Вам помощь Конструкторского отдела:

- Подбор оптимального решения, техническое обоснование при выборе компонента;
- Подбор аналогов;
- Консультации по применению компонента;
- Поставка образцов и прототипов;
- Техническая поддержка проекта;
- Защита от снятия компонента с производства.



#### Как с нами связаться

**Телефон:** 8 (812) 309 58 32 (многоканальный)

**Факс:** 8 (812) 320-02-42

**Электронная почта:** [org@eplast1.ru](mailto:org@eplast1.ru)

**Адрес:** 198099, г. Санкт-Петербург, ул. Калинина, дом 2, корпус 4, литера А.