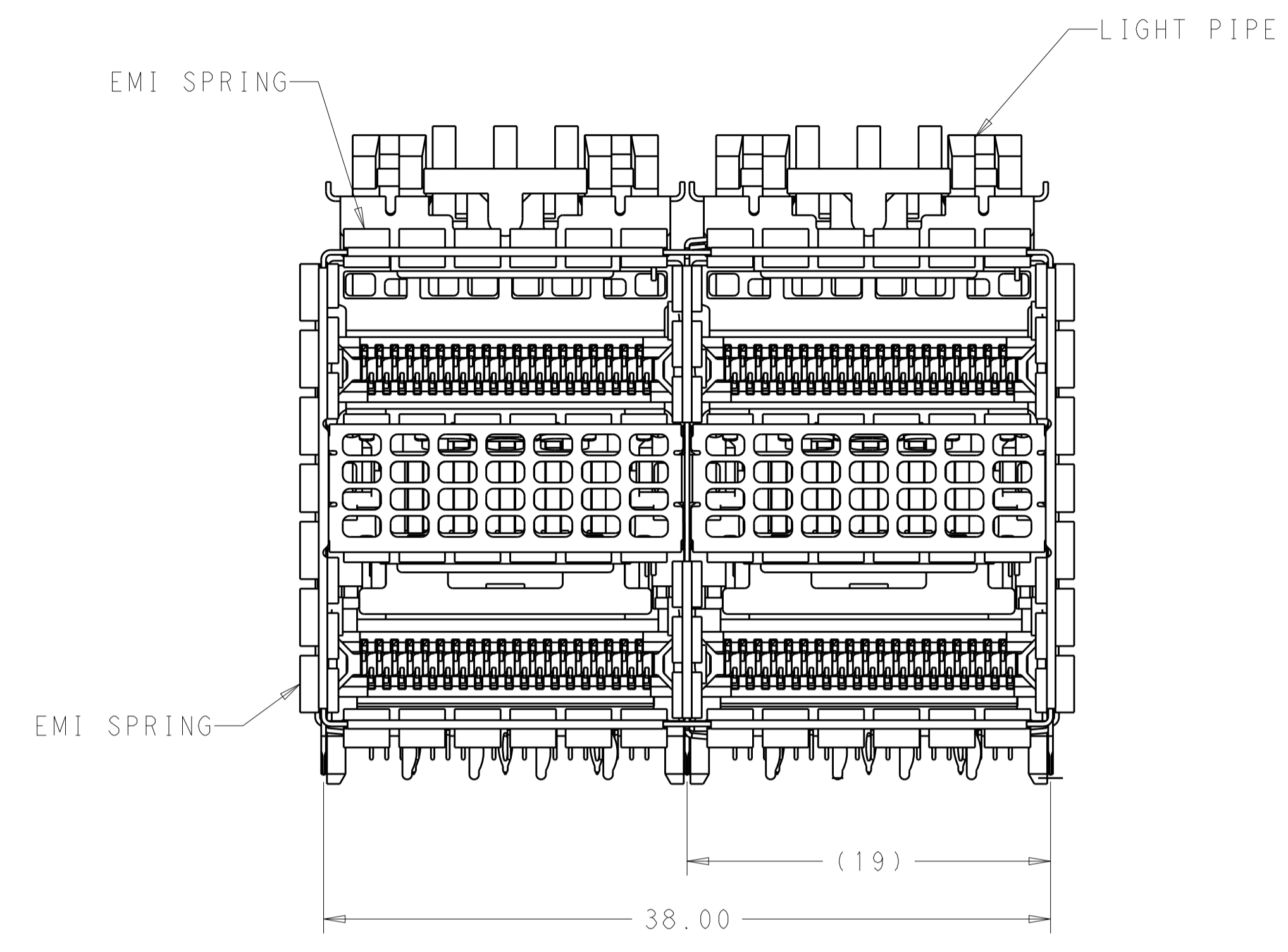
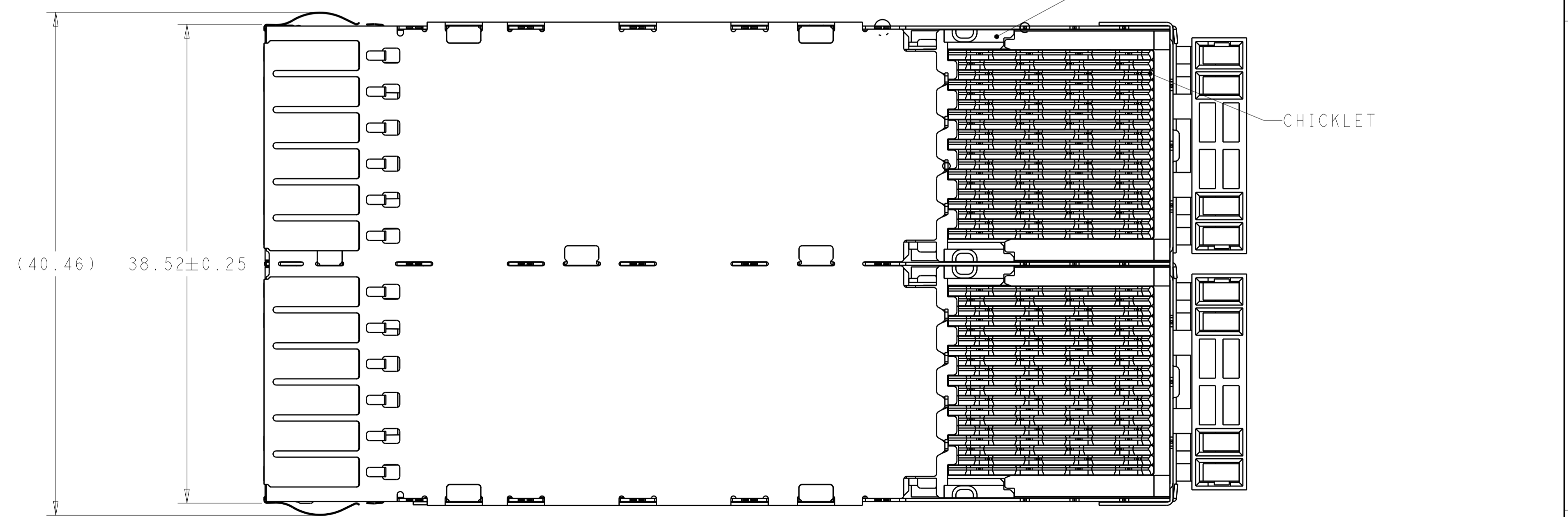
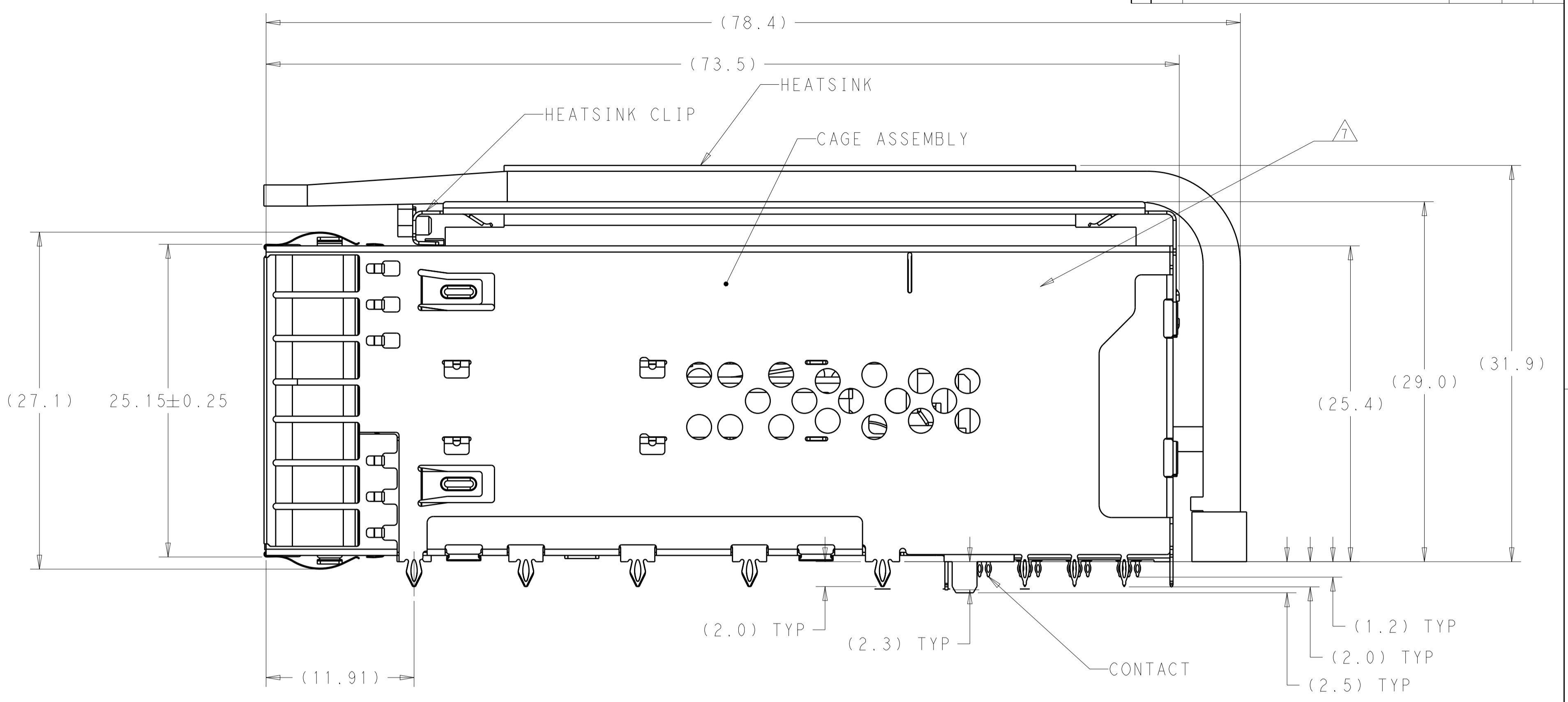


| LOC | DIST | REVISIONS | | | | | |
|-----|------|-----------|-----|---------------------------|-----------|-----|------|
| GP | 00 | P | LTH | DESCRIPTION | DATE | DWN | APVD |
| | | A | | INITIAL RELEASE | 13MAR2017 | LL | SH |
| | | B | | REVISED PER ECO-17-012744 | 31AUG2017 | TX | SH |



2299870-1



1. MATERIALS:
 CAGE ASSEMBLY- NICKEL SILVER ALLOY PER ASTM B 122.
 EMI SPRING- COPPER ALLOY, NICKEL PLATED.
 HOUSING- POLYESTER LCP WITH 94V-0.
 CHICKLET- POLYESTER LCP WITH 94V-0.
 CONTACT- COPPER ALLOY.
 LIGHTPIPE- POLYCARBONATE WITH 94V-0.
2. CONTACT FINISH: 0.76µm GOLD ON MATING AREA, 0.7-1.5µm MATT TIN ON COMPLIANT AREA, ALL OVER 1.27µm NICKEL.
3. DATUM AND BASIC DIMENSION ESTABLISHED BY CUSTOMER.
4. MINIMUM PCB THICKNESS OF 1.57.
5. THE ENTIRE AREA OF THE CONNECTOR FOOTPRINT, INDICATED BY THE DASHED LINE, TO BE CONSIDERED THE KEEPOUT AREA FOR COMPONENTS AND TRACES.
6. CROSS-HATCHED AREAS REPRESENT ZONES ON THE PCB THAT COME IN CONTACT WITH OR BE IN CLOSE PROXIMITY TO THE PLASTIC HOUSING OR THE CONNECTOR CAGE. INDICATED AREAS TO BE CONSIDERED TRACE FREE.
7. PART NUMBER AND DATE CODE MAKED IN APPROXIMATE AREA SHOWN.
8. HATCHED AREA IS PLACEMENT ZONE FOR LED. LED SHOULD BE CENTERED WITHIN ZONE. RECOMMEND 0805 PACKAGE.
9. CONTACT FINISH: 0.08µm MINIMUM GOLD OVER 0.68µm PALLADIUM-NICKEL ON MATING AREA, 0.7-1.5µm MATT TIN ON COMPLIANT AREA, ALL OVER 1.27µm NICKEL.

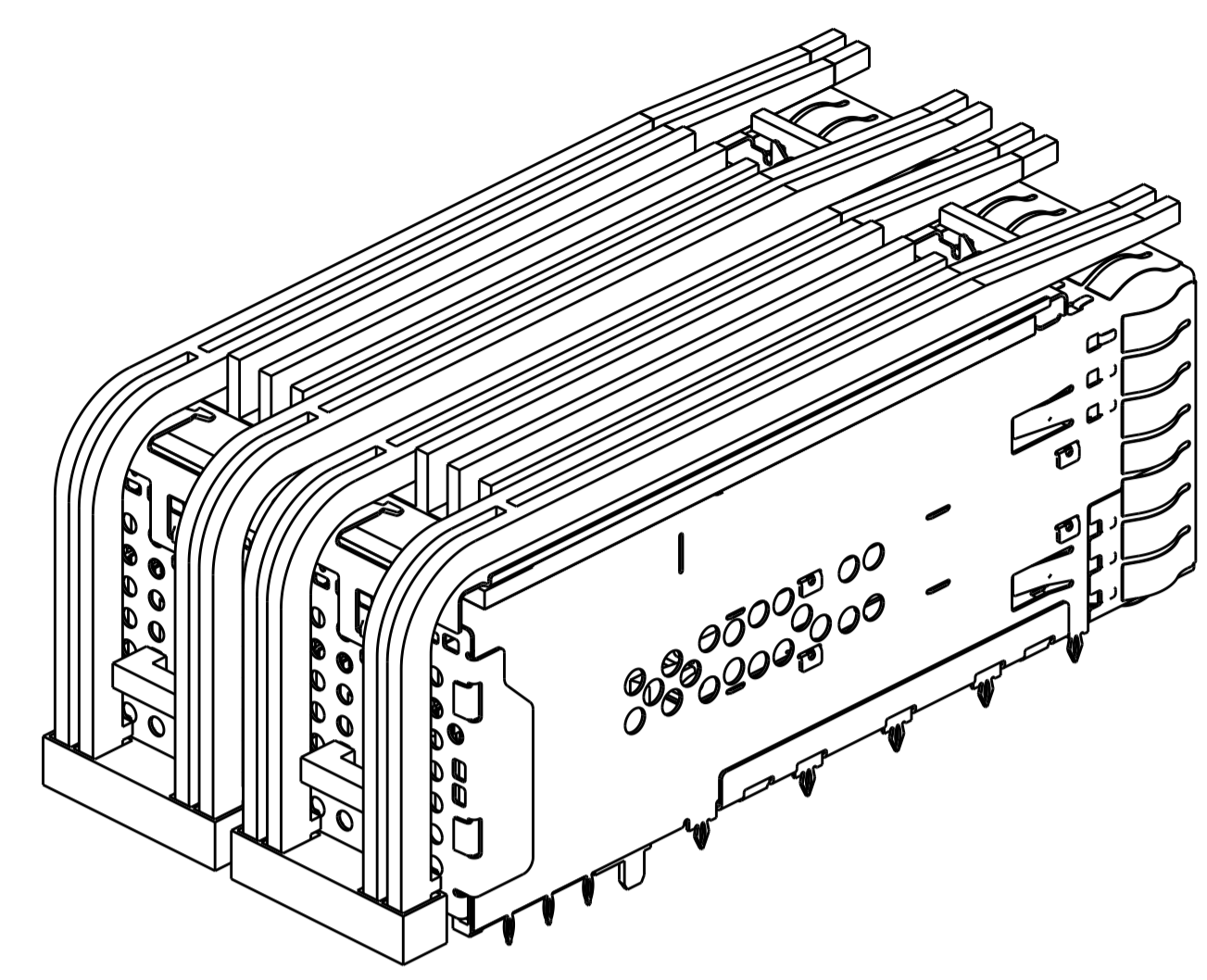
| CONTACT FINISH | DESCRIPTION | PART NUMBER |
|----------------|------------------------|-------------|
| 2 | WITH HS & WITHOUT LP | 2299870-6 |
| 2 | WITHOUT UPPER HS OR LP | 2299870-5 |
| 2 | WITHOUT UPPER HS OR LP | 2299870-4 |
| 2 | WITH HS & WITHOUT LP | 2299870-3 |
| 2 | WITH HS & WITHOUT LP | 2299870-2 |
| 2 | WITH HS & WITH LP | 2299870-1 |

THIS DRAWING IS A CONTROLLED DOCUMENT.

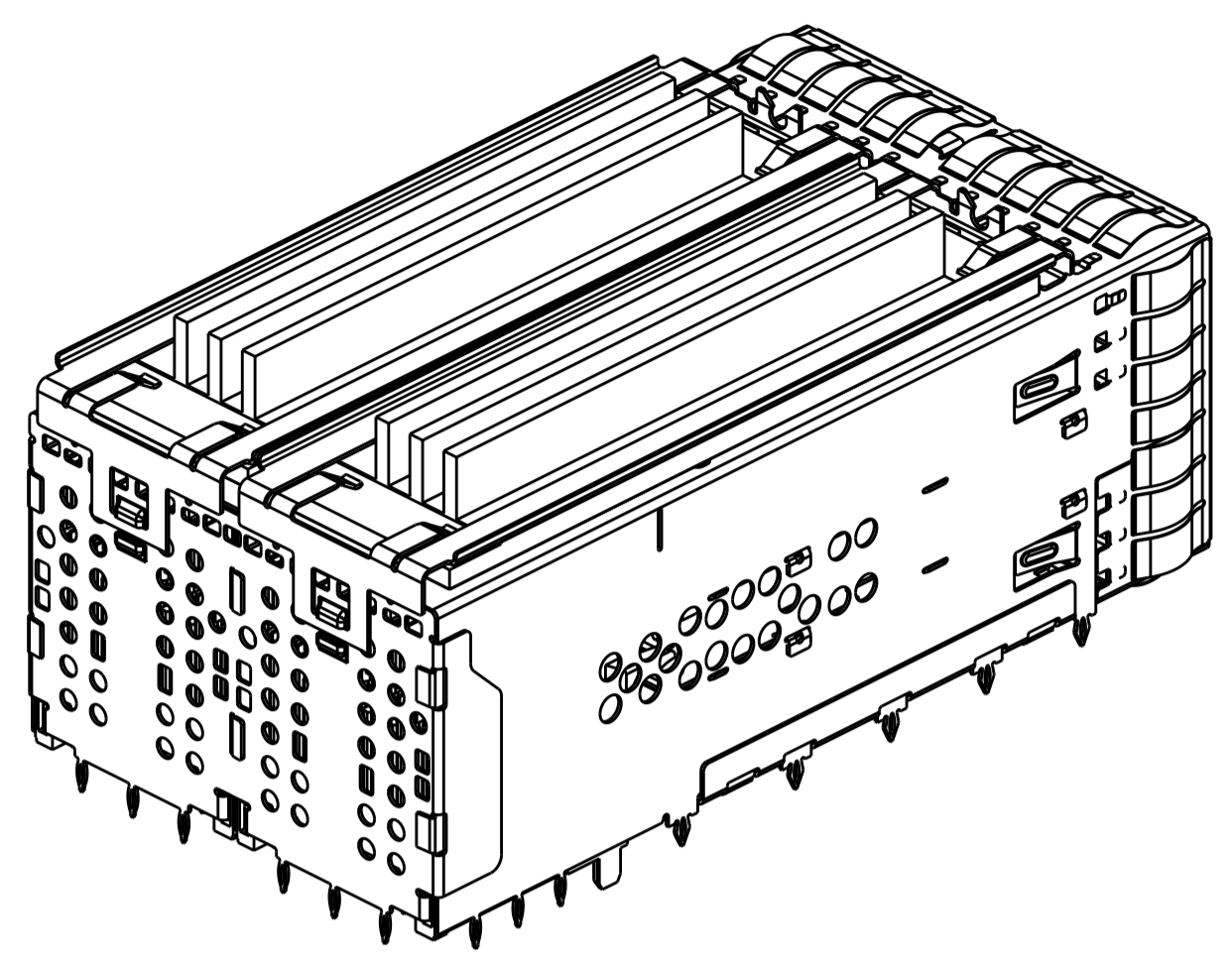
| | | | | |
|-------------|--|------------------|---|------------------------|
| DIMENSIONS: | TOLERANCES UNLESS OTHERWISE SPECIFIED: | DWN | TIM XUE | 28JAN2016 |
| mm | 0 PLC ± | CHK | SEAN HAN | 28JAN2016 |
| | 1 PLC ±0.25 | APPD | SEAN HAN | 28JAN2016 |
| | 2 PLC ±0.15 | NAME | CAGE AND CONNECTOR ASSEMBLY WITH EMI SPRING FINGERS, THRU BEZEL, 2X2 ZQSFP+ STACKED WITH HS | |
| | 3 PLC ± | PRODUCT SPEC | 108-60102 | |
| | 4 PLC ± | APPLICATION SPEC | 114-60015 | |
| MATERIAL | FINISH | WEIGHT | A100779C=2299870 | |
| SEE NOTE 1 | SEE NOTE 2 | CUSTOMER DRAWING | SCALE | 4:1 SHEET 1 OF 8 REV B |

STC TE Connectivity

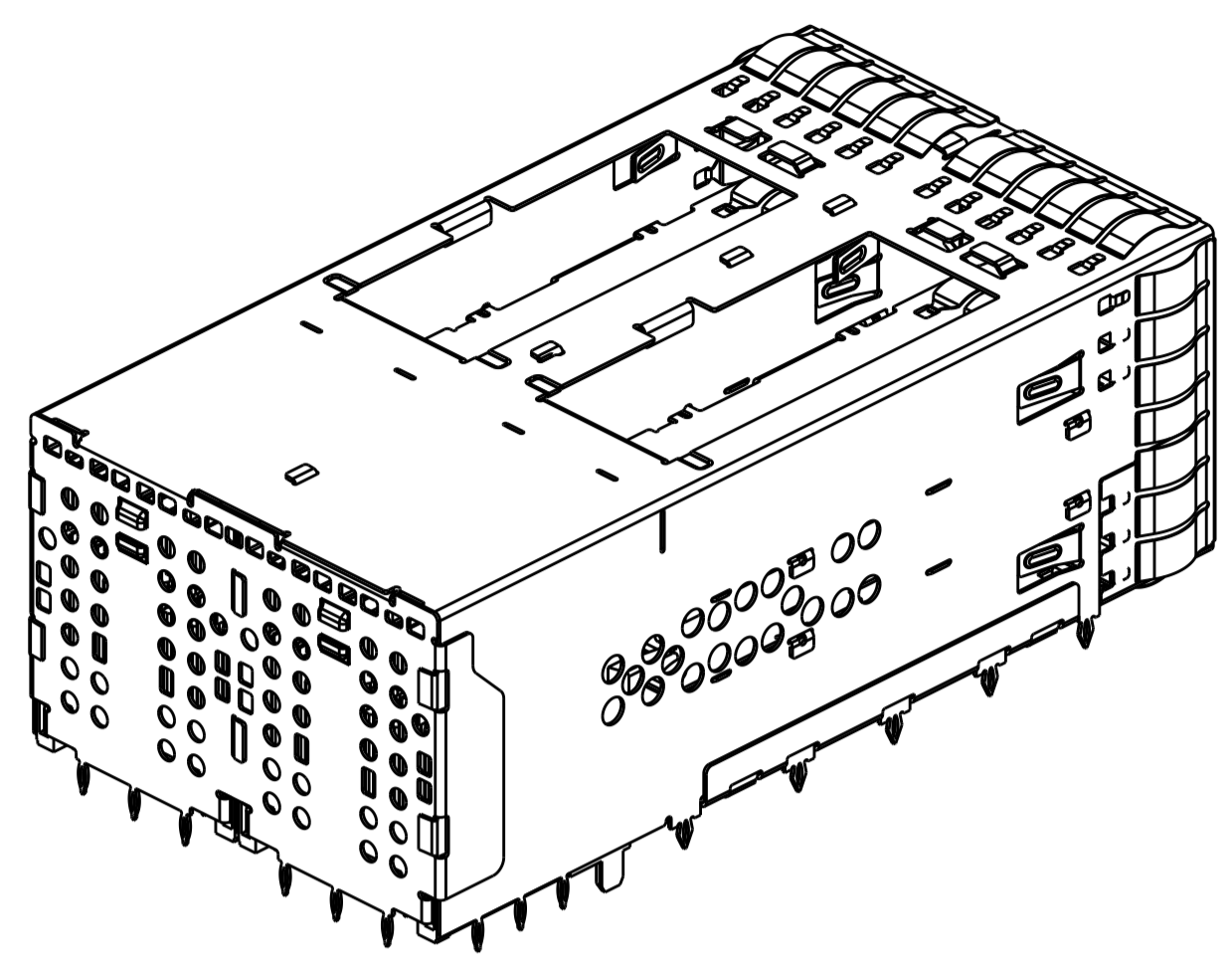
| LOC | DIST | REVISIONS | | | | | |
|-----|------|-----------|-----|-------------|------|-----|------|
| GP | 00 | P | LYR | DESCRIPTION | DATE | OWN | APVD |
| | | - | | SEE SHEET 1 | | | |



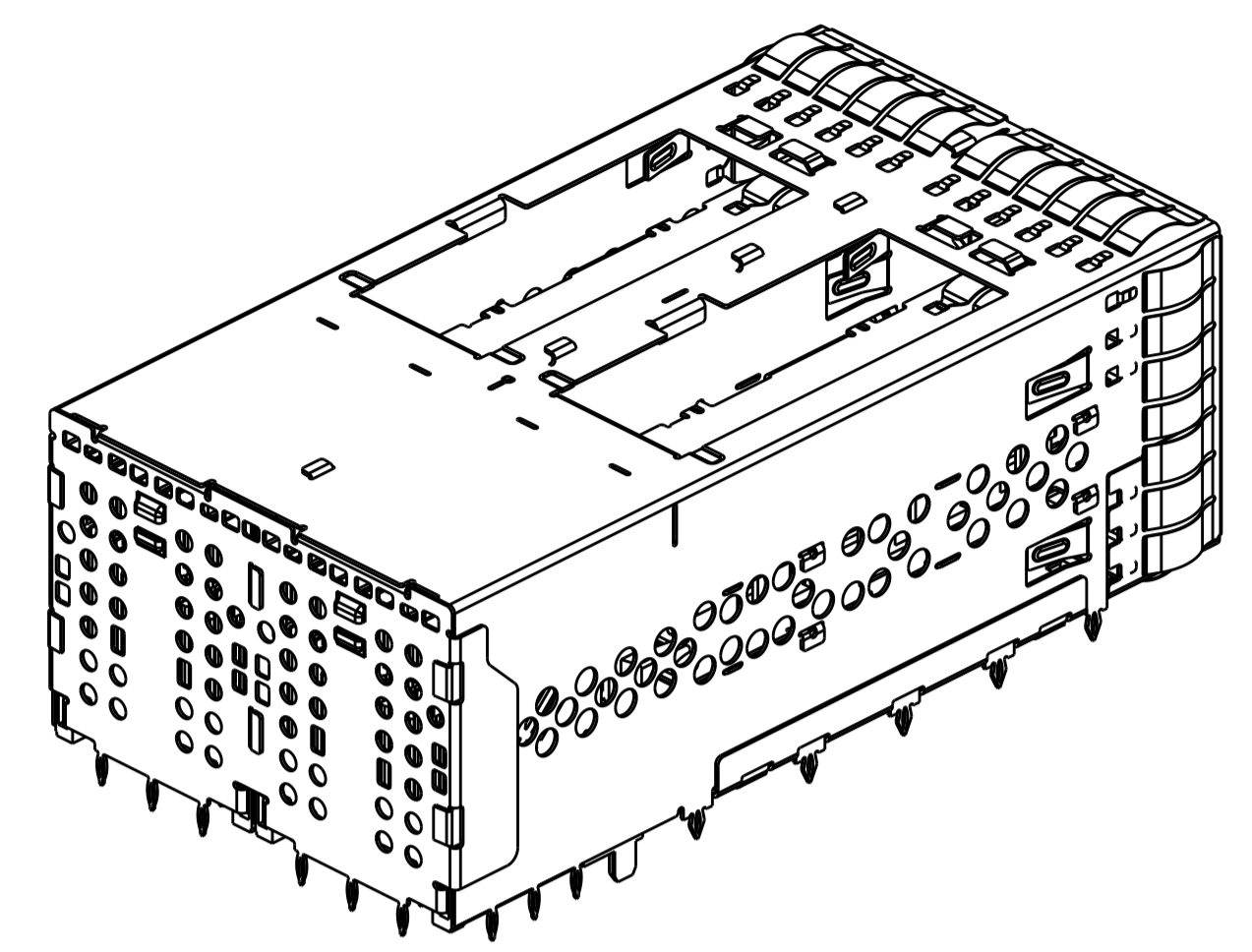
2299870-1 AS SHOWN
SCALE 2:1



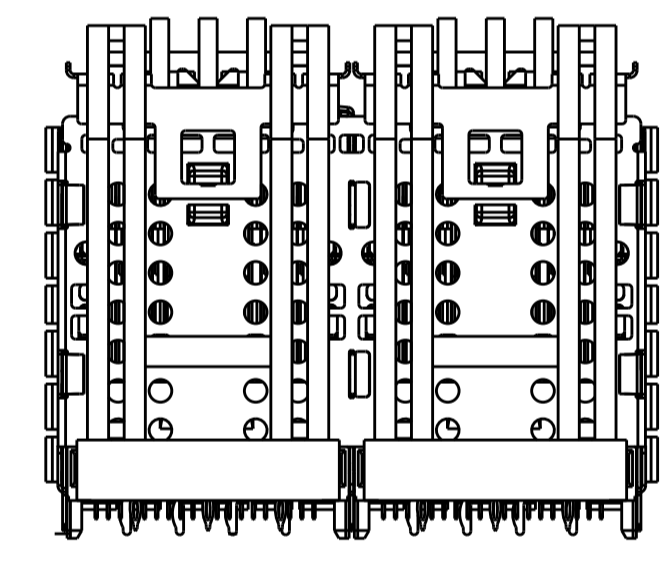
2299870-2 AS SHOWN
SAME AS 2299870-1 EXCEPT
W/O LEHT PIPE AND ORGANIZER
SCALE 2:1



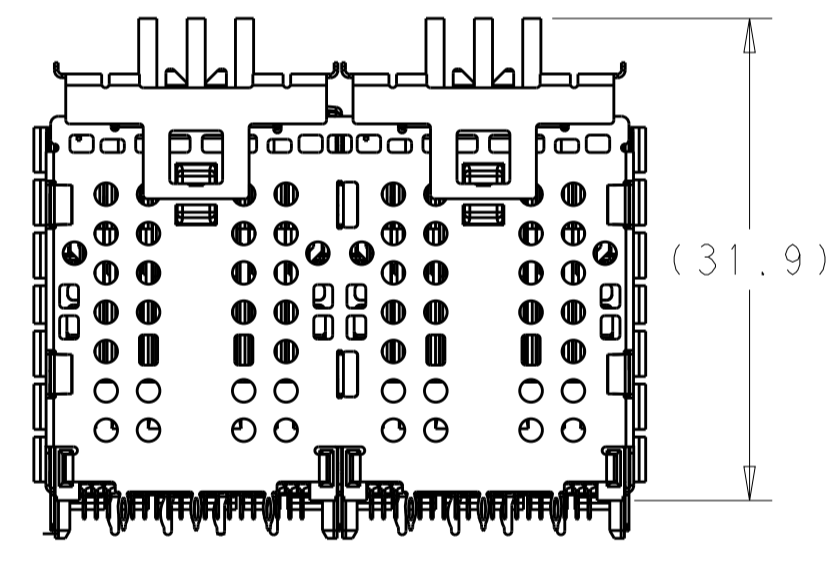
2299870-4 AS SHOWN
SAME AS 2299870-2 EXCEPT
W/O EXTERNAL HEAT SINK AND LP
SCALE 2:1



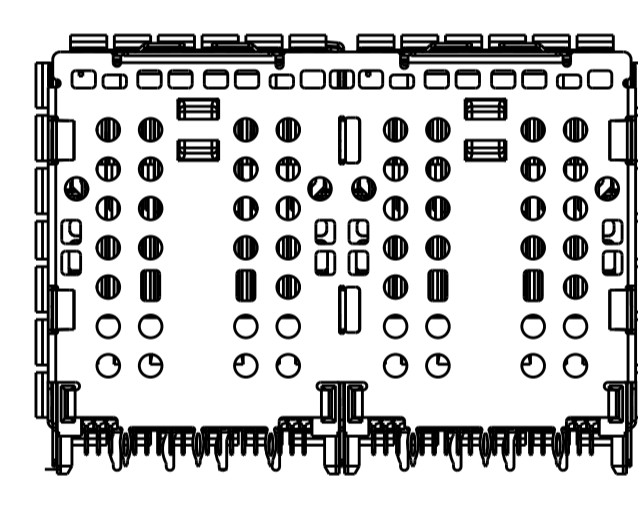
2299870-5
SCALE 2:1



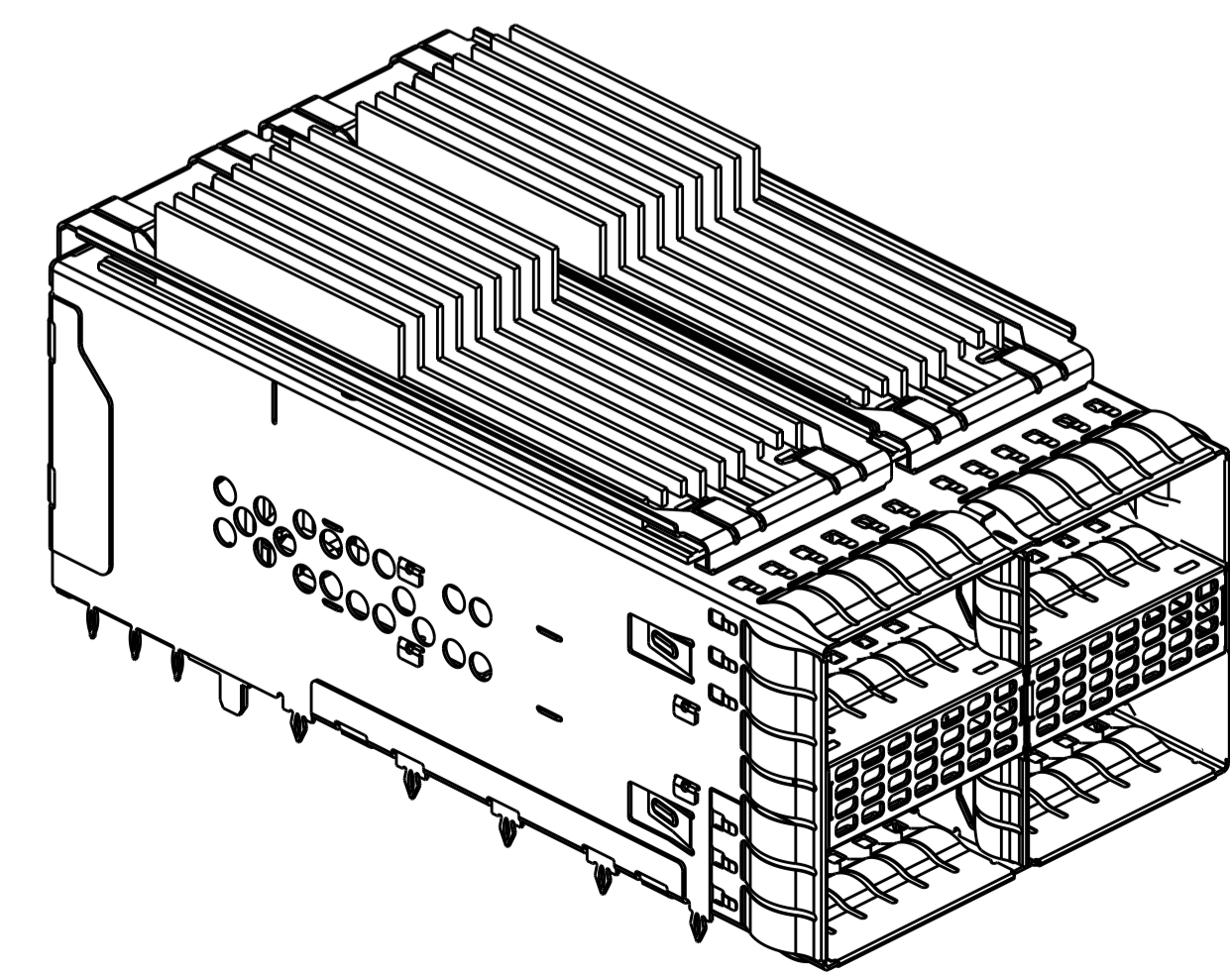
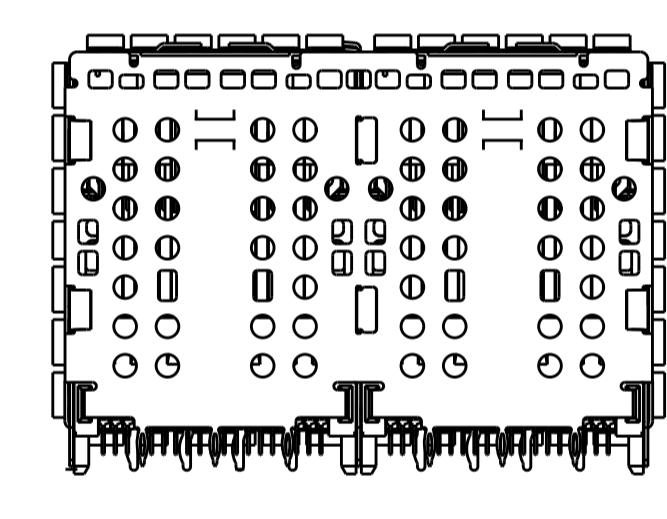
2299870-1
SCALE 2:1



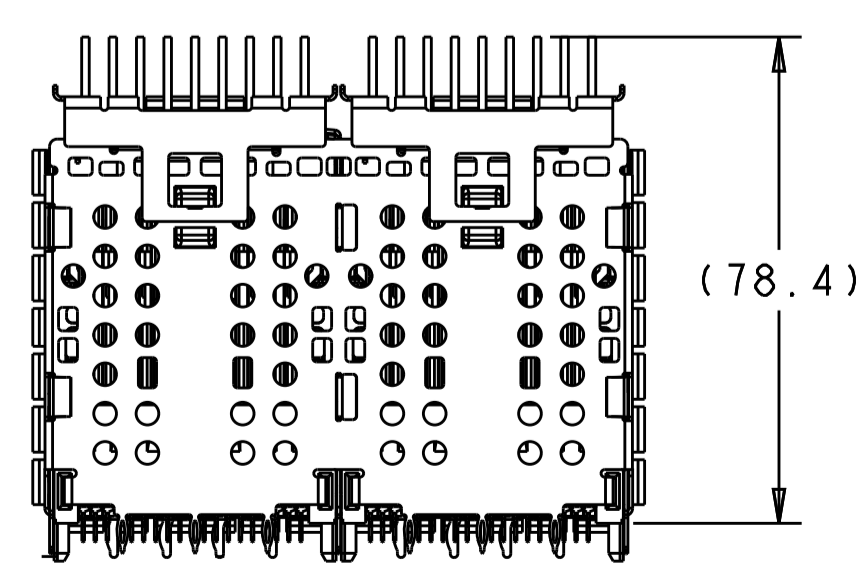
2299870-2
SCALE 2:1



2299870-4
SCALE 2:1



2299870-6
SCALE 2:1

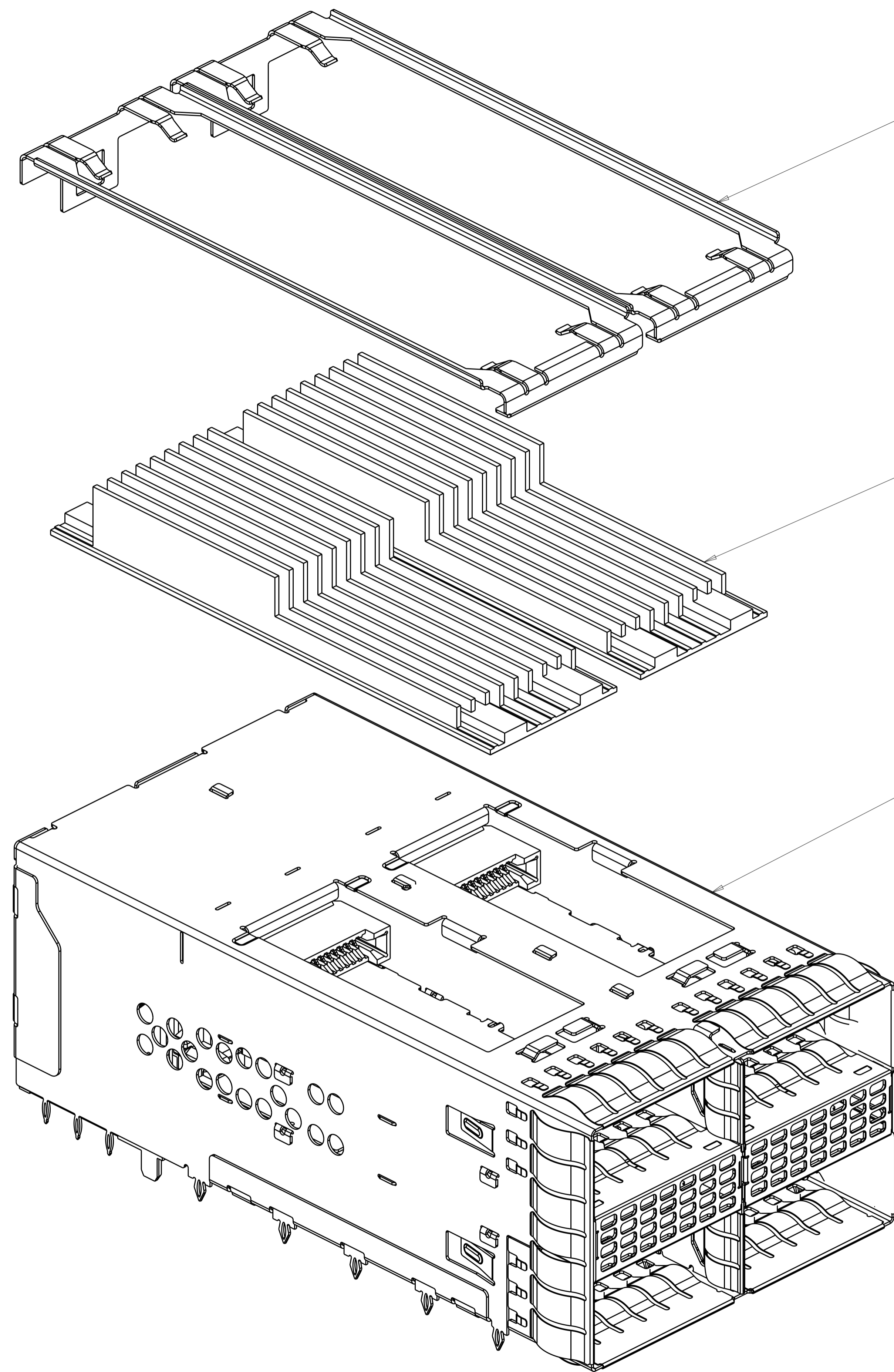


2299870-6
SCALE 2:1

| | | | | | | | | | | | | | |
|---|-------|-----------------------------|---|-------|-------|-------|-------|-------|---|-------|---|-------------------------|-----------------|
| THIS DRAWING IS A CONTROLLED DOCUMENT. | | OWN: TIM XUE 28JAN2016 | | | | | | | | | | | |
| DIMENSIONS: mm | | CHK: SEAN HAN 28JAN2016 | | | | | | | | | | | |
| TOLERANCES UNLESS OTHERWISE SPECIFIED: | | APVD: SEAN HAN 28JAN2016 | NAME: CAGE AND CONNECTOR ASSEMBLY WITH EMI SPRING FINGERS, THRU BEZEL, 2X2 ZQSFP+ STACKED WITH HS | | | | | | | | | | |
| <table border="1"> <tr><td>0 PLC</td><td>±</td></tr> <tr><td>1 PLC</td><td>±0.25</td></tr> <tr><td>2 PLC</td><td>±0.15</td></tr> <tr><td>3 PLC</td><td>±</td></tr> <tr><td>4 PLC</td><td>±</td></tr> </table> | | 0 PLC | ± | 1 PLC | ±0.25 | 2 PLC | ±0.15 | 3 PLC | ± | 4 PLC | ± | PRODUCT SPEC: 108-60102 | SIZE: 114-60015 |
| 0 PLC | ± | | | | | | | | | | | | |
| 1 PLC | ±0.25 | | | | | | | | | | | | |
| 2 PLC | ±0.15 | | | | | | | | | | | | |
| 3 PLC | ± | | | | | | | | | | | | |
| 4 PLC | ± | | | | | | | | | | | | |
| MATERIAL: SEE NOTE 1 | | APPLICATION SPEC: 114-60015 | RESTRICTED TO: A100779C=2299870 | | | | | | | | | | |
| FINISH: SEE NOTE 2 | | WEIGHT: - | SCALE: 4:1 SHEET 2 OF 8 REV B | | | | | | | | | | |
| CUSTOMER DRAWING | | | | | | | | | | | | | |

| LOC | DIST | REVISIONS | | | |
|-----|------|---------------|------|-----|------|
| P | LTN | DESCRIPTION | DATE | DMN | APVD |
| GP | 00 | - SEE SHEET 1 | - | - | - |
| | | | | | |
| | | | | | |

2299870-3 AS SHOWN, KIT PACKAGE



HEAT SINK CLIP
PN: 1-2300832-7

HEAT SINK
PN: 1-2304280-3

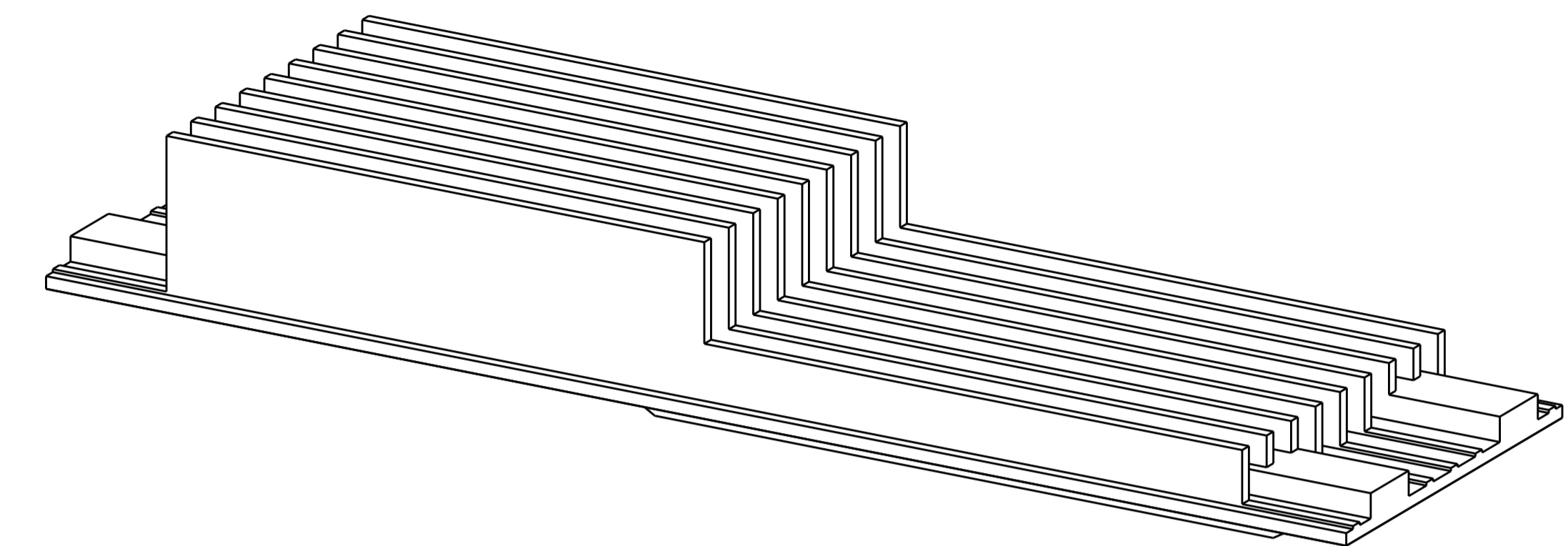
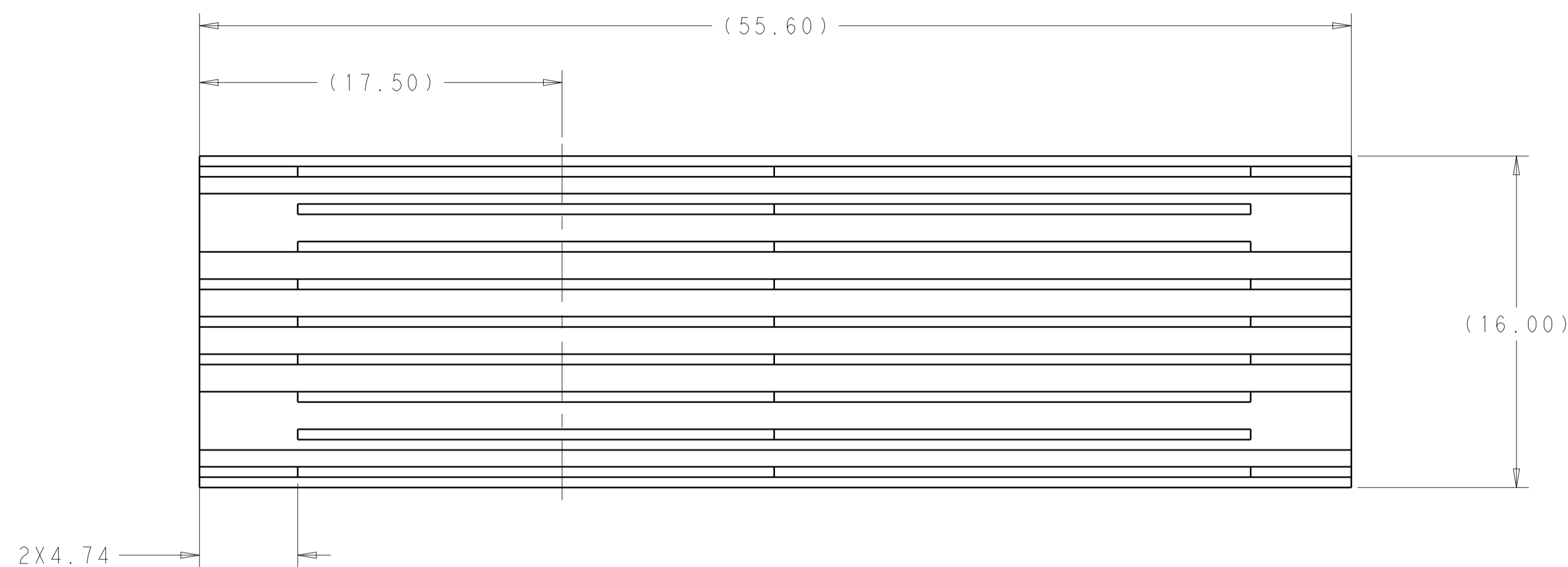
CAGE AND CONNECTOR ASSEMBLY
PN: 2299870-4

SCALE 4:1

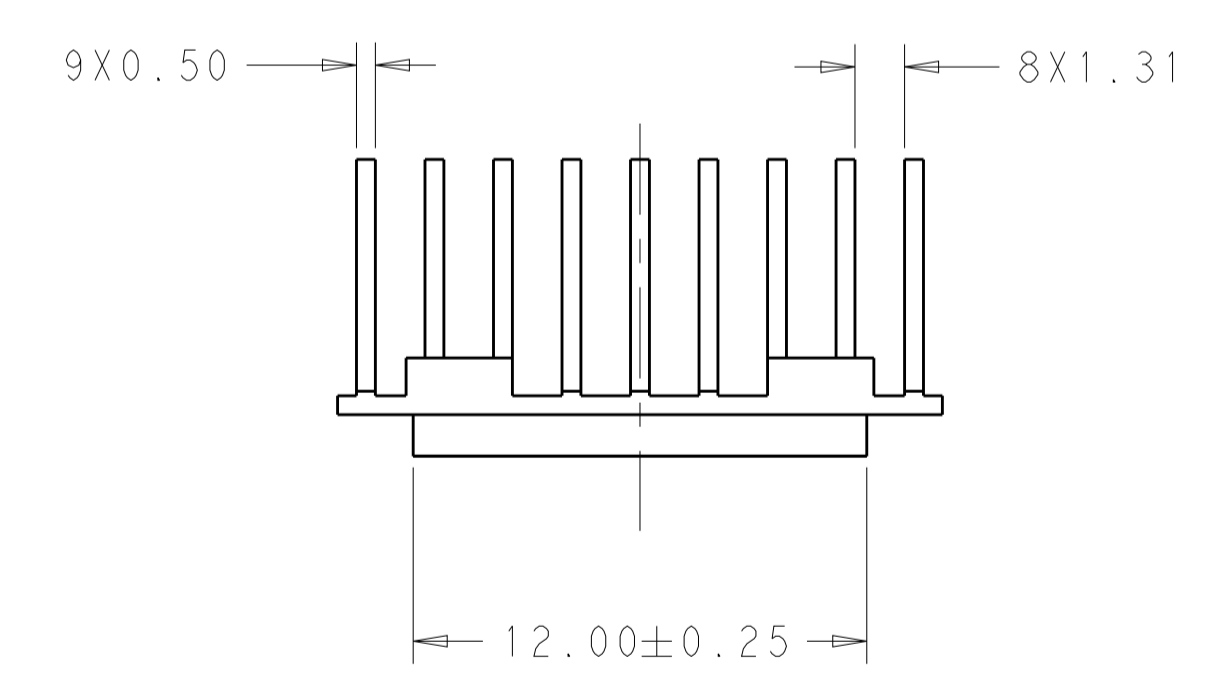
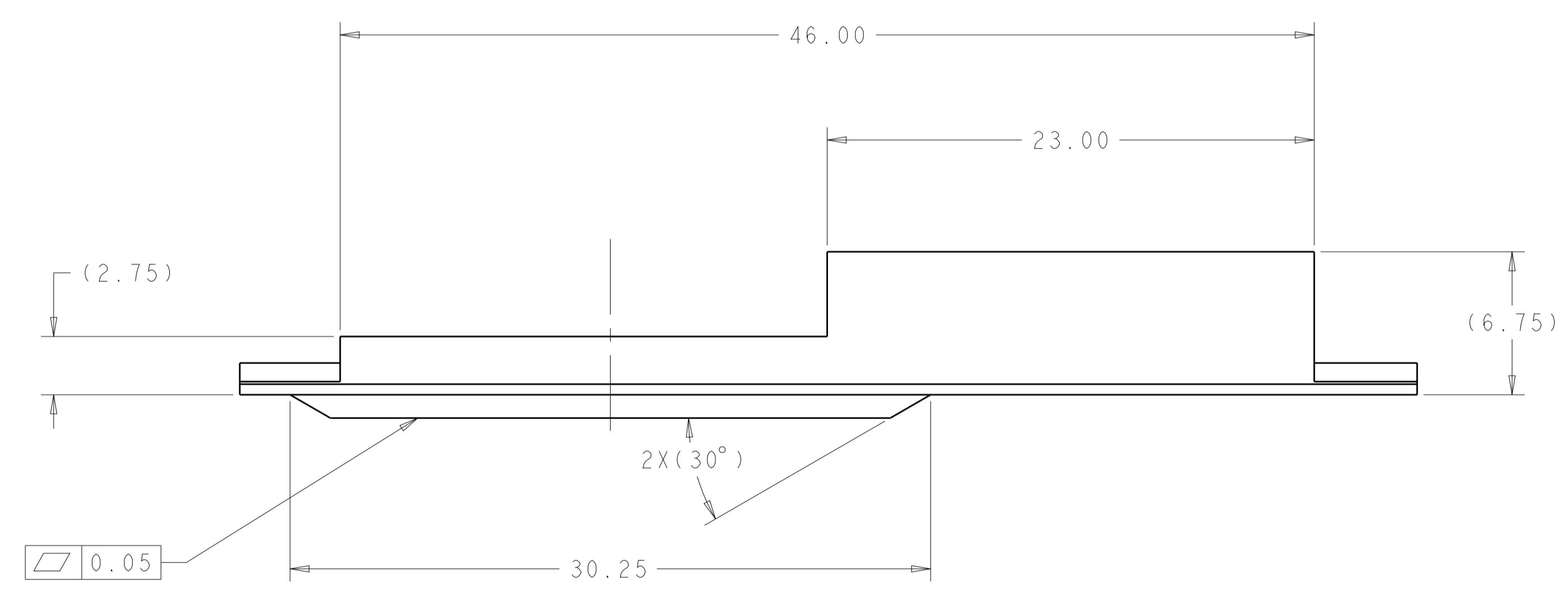
| | | | |
|-----------|-------------|-----------------------------|------|
| 2 | 1-2300832-7 | HEAT SINK CLIP | 3 |
| 2 | 1-2304280-3 | HEAT SINK | 2 |
| 1 | 2299870-4 | CAGE AND CONNECTOR ASSEMBLY | 1 |
| 2299870-3 | PART NUMBER | DESCRIPTION | ITEM |

| | | | | | |
|---|--|---|----------|-----------|-----------------|
| THIS DRAWING IS A CONTROLLED DOCUMENT. | | DMN | TIM XUE | 28JAN2016 | TE Connectivity |
| DIMENSIONS: | | CHK | SEAN HAN | 28JAN2016 | |
| mm | | APVD | SEAN HAN | 28JAN2016 | |
| 0 PLC ± 1 PLC ±0.25 2 PLC ±0.15 3 PLC ± 4 PLC ± ANGLES ± FINISH ± | | NAME CAGE AND CONNECTOR ASSEMBLY WITH EMI SPRING FINGERS, THRU BEZEL, 2X2 ZQSFP+ STACKED WITH HS | | | |
| MATERIAL | | PRODUCT SPEC | | 108-60102 | SIZE |
| SEE NOTE 1 | | APPLICATION SPEC | | 114-60015 | CAGE CODE |
| SEE NOTE 2 | | FINISH | | | DRAWING NO |
| | | WEIGHT | | | A100779 |
| | | CUSTOMER DRAWING | | | ©=2299870 |
| | | SCALE | | 4:1 | SHEET 3 OF 8 |
| | | REV | | B | |

| LOC | DIST | REVISIONS | | | |
|-----|------|-------------|------|-----|------|
| P | LTN | DESCRIPTION | DATE | DMN | APVD |
| - | - | SEE SHEET 1 | - | - | - |
| | | | | | |
| | | | | | |

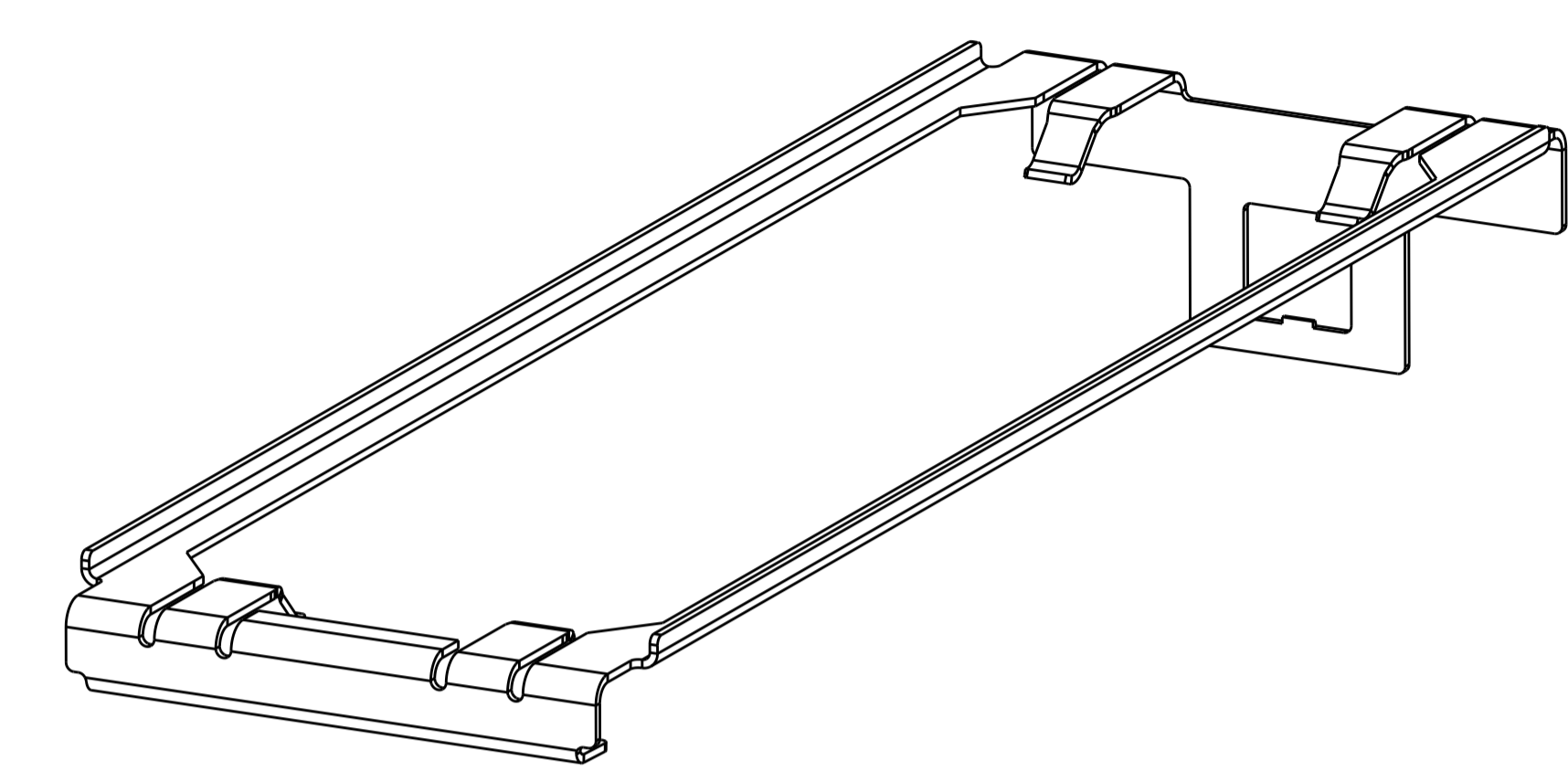
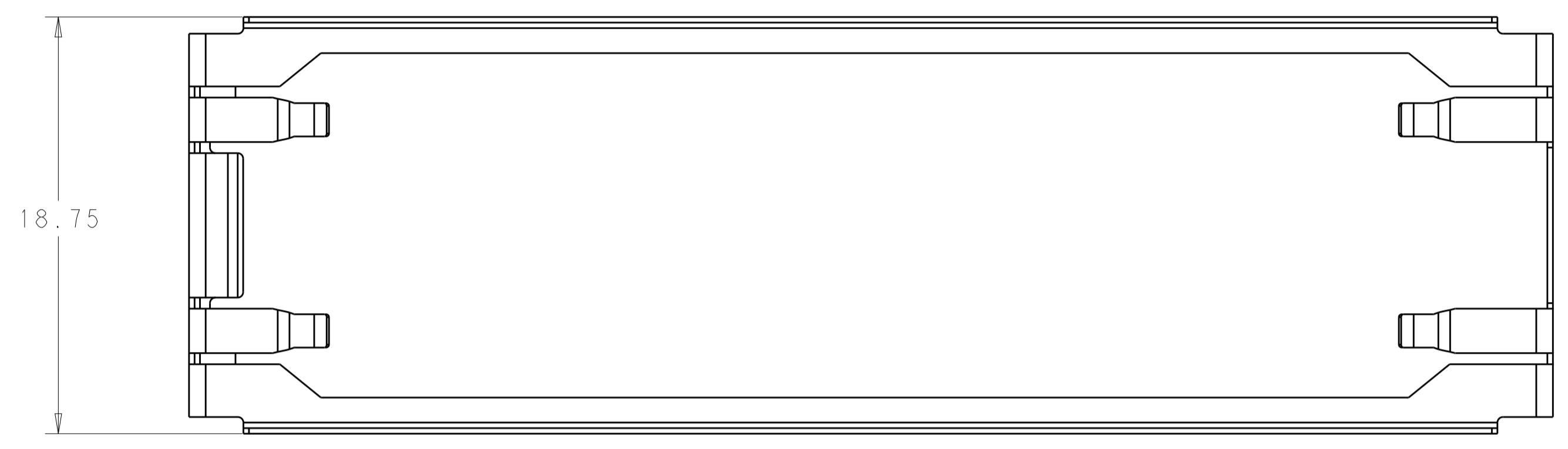


1-2304280-3 HEAT SINK SHOWN
SCALE 5:1

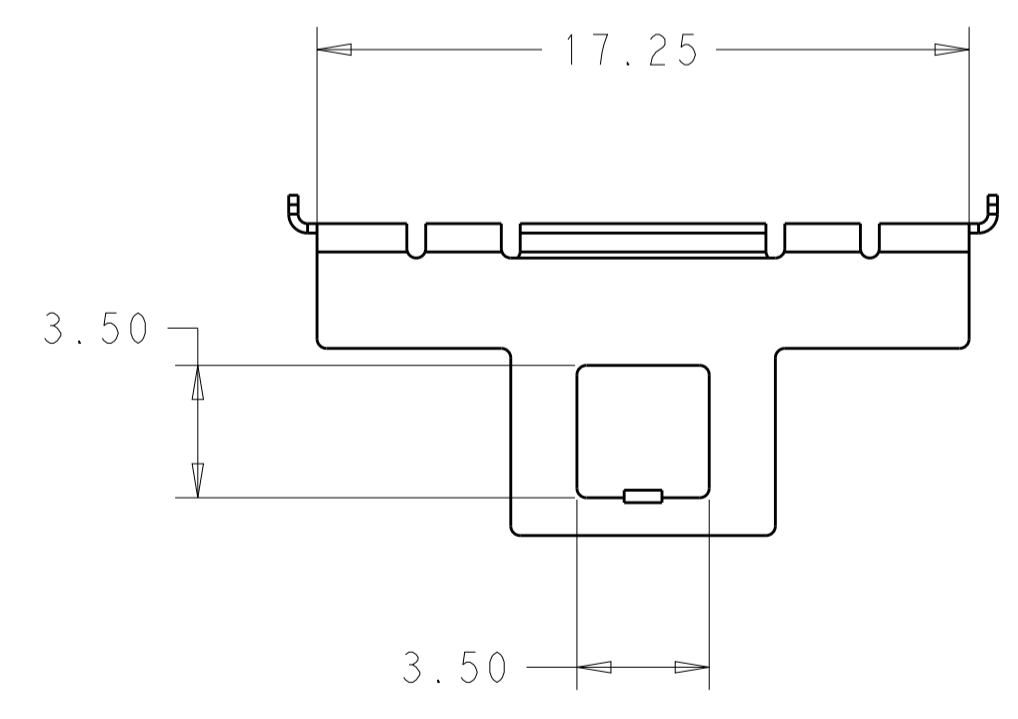
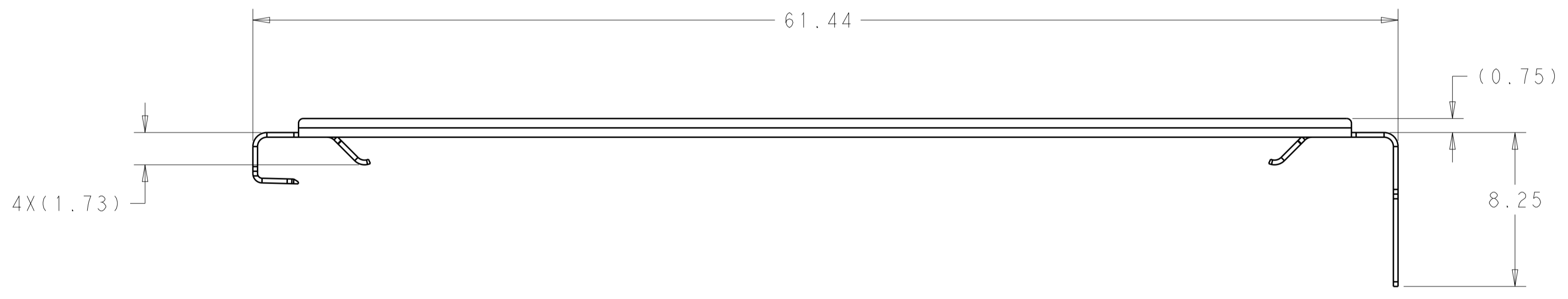


| | | | |
|--|----------------------|-------------------------------|---|
| THIS DRAWING IS A CONTROLLED DOCUMENT. | | DMN TIM XUE 28JAN2016 | TE Connectivity |
| DIMENSIONS: mm | | CHK SEAN HAN 28JAN2016 | |
| TOLERANCES UNLESS OTHERWISE SPECIFIED: | | APVD SEAN HAN 28JAN2016 | NAME CAGE AND CONNECTOR ASSEMBLY WITH EMI SPRING FINGERS, THRU BEZEL, 2X2 ZQSFP+ STACKED WITH HS |
| 0 PLC ± | 1 PLC ±0.25 | PRODUCT SPEC | SIZE A100779 |
| 2 PLC ±0.15 | 3 PLC ± | APPLICATION SPEC | CAGE CODE C=2299870 |
| 4 PLC ± | ANGLES ± | 114-60015 | RESTRICTED TO |
| MATERIAL SEE NOTE 1 | FINISH SEE NOTE 2 | WEIGHT - | SCALE 4:1 |
| CUSTOMER DRAWING | | SHEET 4 OF 8 | REV B |

| LOC | DIST | REVISIONS | | | |
|-----|------|-------------|------|-----|------|
| P | LTN | DESCRIPTION | DATE | DMN | APVD |
| GP | 00 | SEE SHEET 1 | - | - | - |
| | | | | | |
| | | | | | |

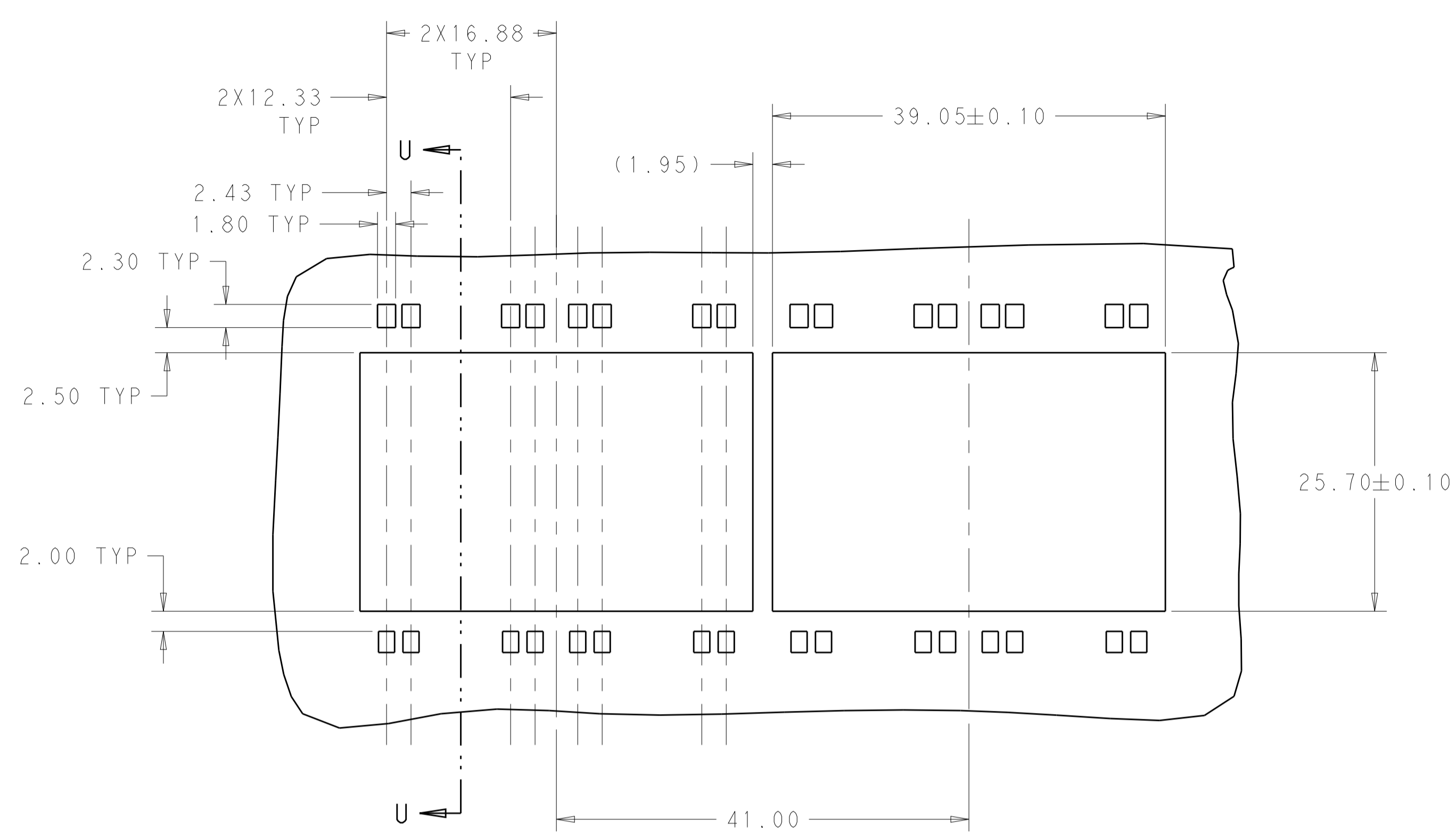


1-2300832-7, HEAT SINK CLIP
 SCALE 5:1

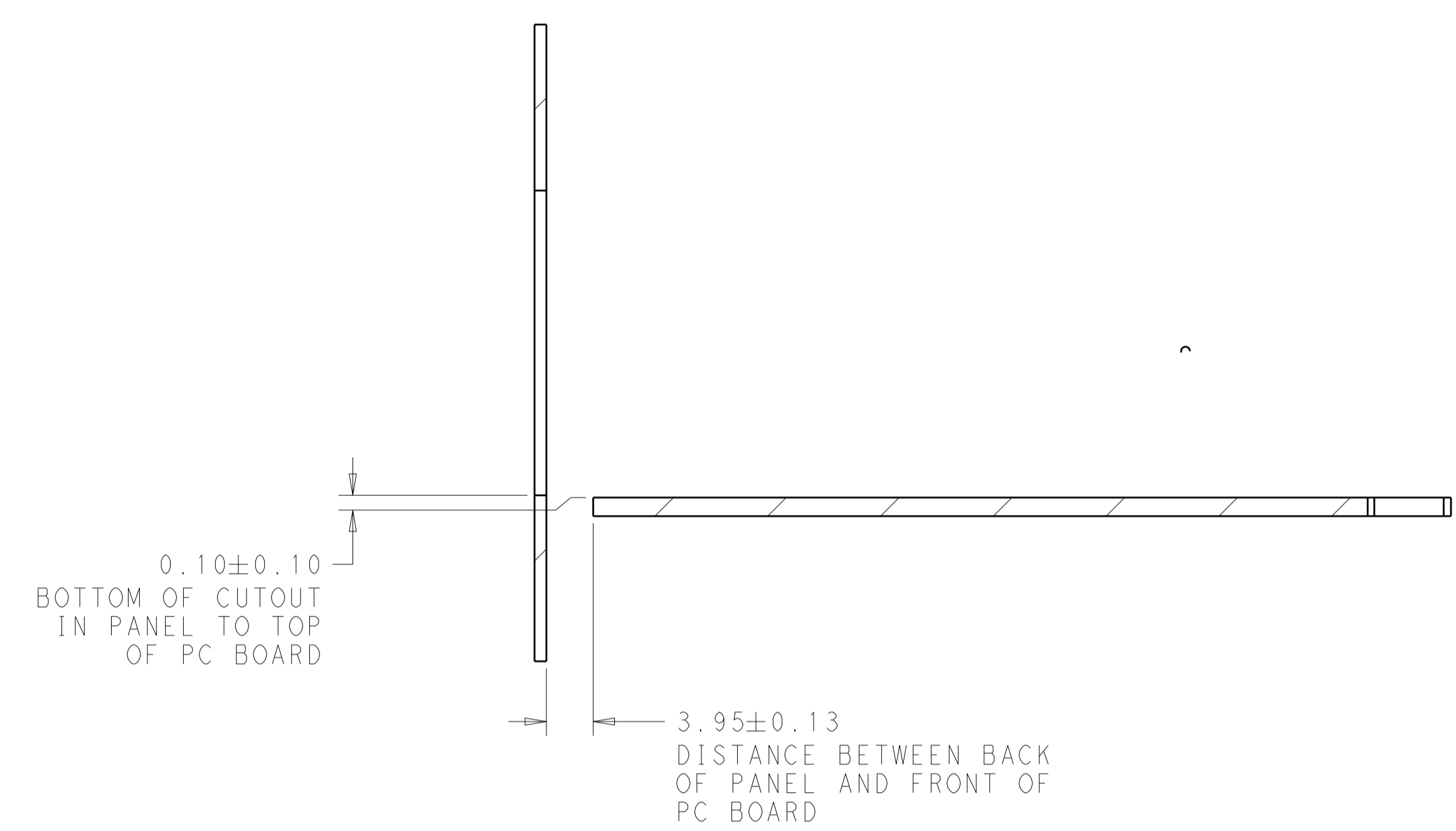


| | | | |
|--|----------------------|-------------------------------|---|
| THIS DRAWING IS A CONTROLLED DOCUMENT. | | DMN TIM XUE 28JAN2016 | |
| DIMENSIONS: mm | | CHK SEAN HAN 28JAN2016 | |
| TOLERANCES UNLESS OTHERWISE SPECIFIED: | | APVD SEAN HAN 28JAN2016 | NAME CAGE AND CONNECTOR ASSEMBLY WITH EMI SPRING FINGERS, THRU BEZEL, 2X2 ZQSFP+ STACKED WITH HS |
| 0 PLC ± | 1 PLC ±0.25 | PRODUCT SPEC | SIZE A100779 |
| 2 PLC ±0.15 | 3 PLC ± | APPLICATION SPEC | CAGE CODE C=2299870 |
| 4 PLC ± | ANGLES ± | 114-60015 | DRAWING NO 2299870 |
| MATERIAL SEE NOTE 1 | FINISH SEE NOTE 2 | WEIGHT - | RESTRICTED TO - |
| CUSTOMER DRAWING | | SCALE 4:1 | SHEET 5 OF 8 |
| | | | REV B |

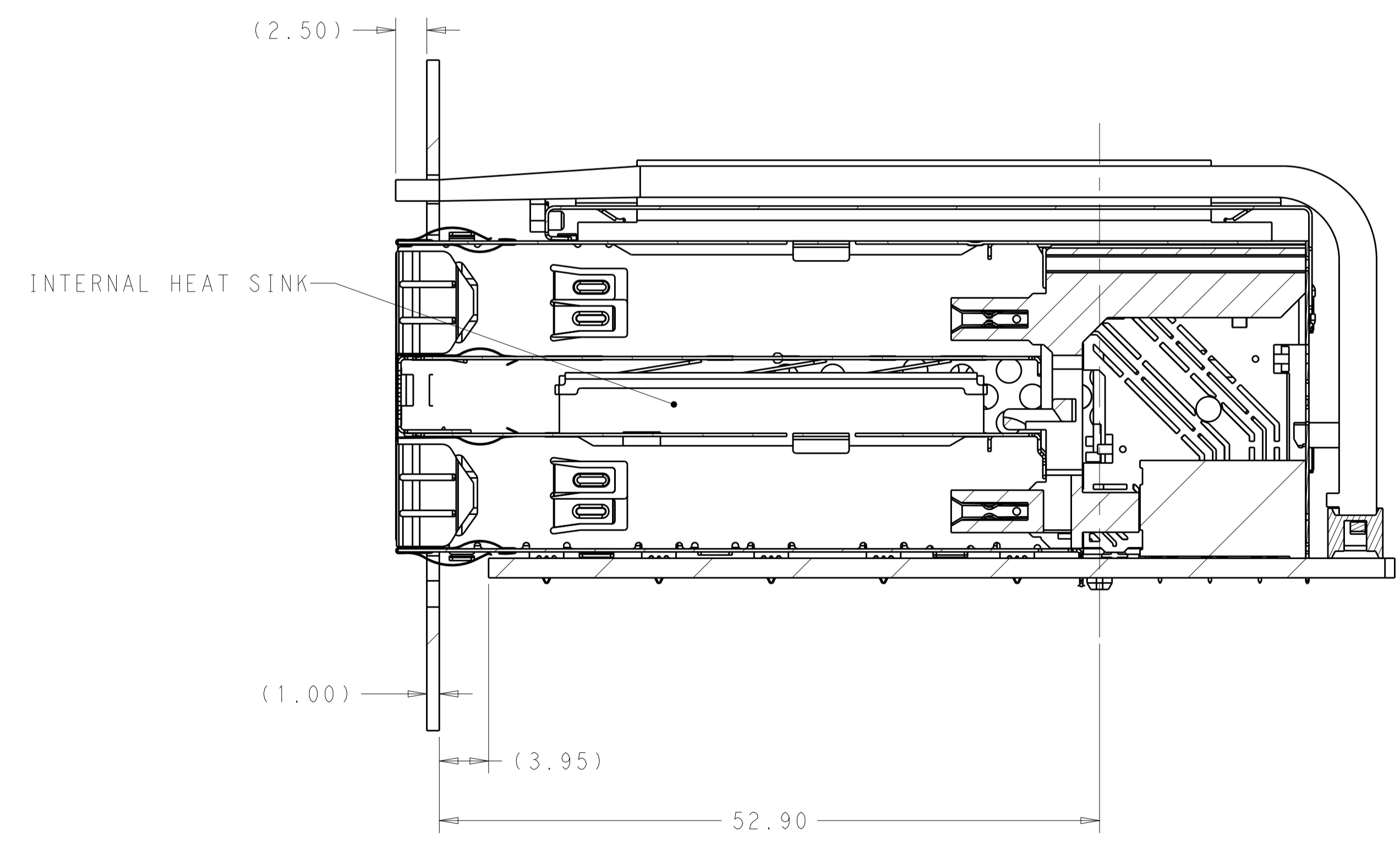
| LOC | DIST | REVISIONS | | | |
|-----|------|-------------|------|-----|------|
| P | LTN | DESCRIPTION | DATE | DMN | APVD |
| GP | 00 | SEE SHEET 1 | | | |



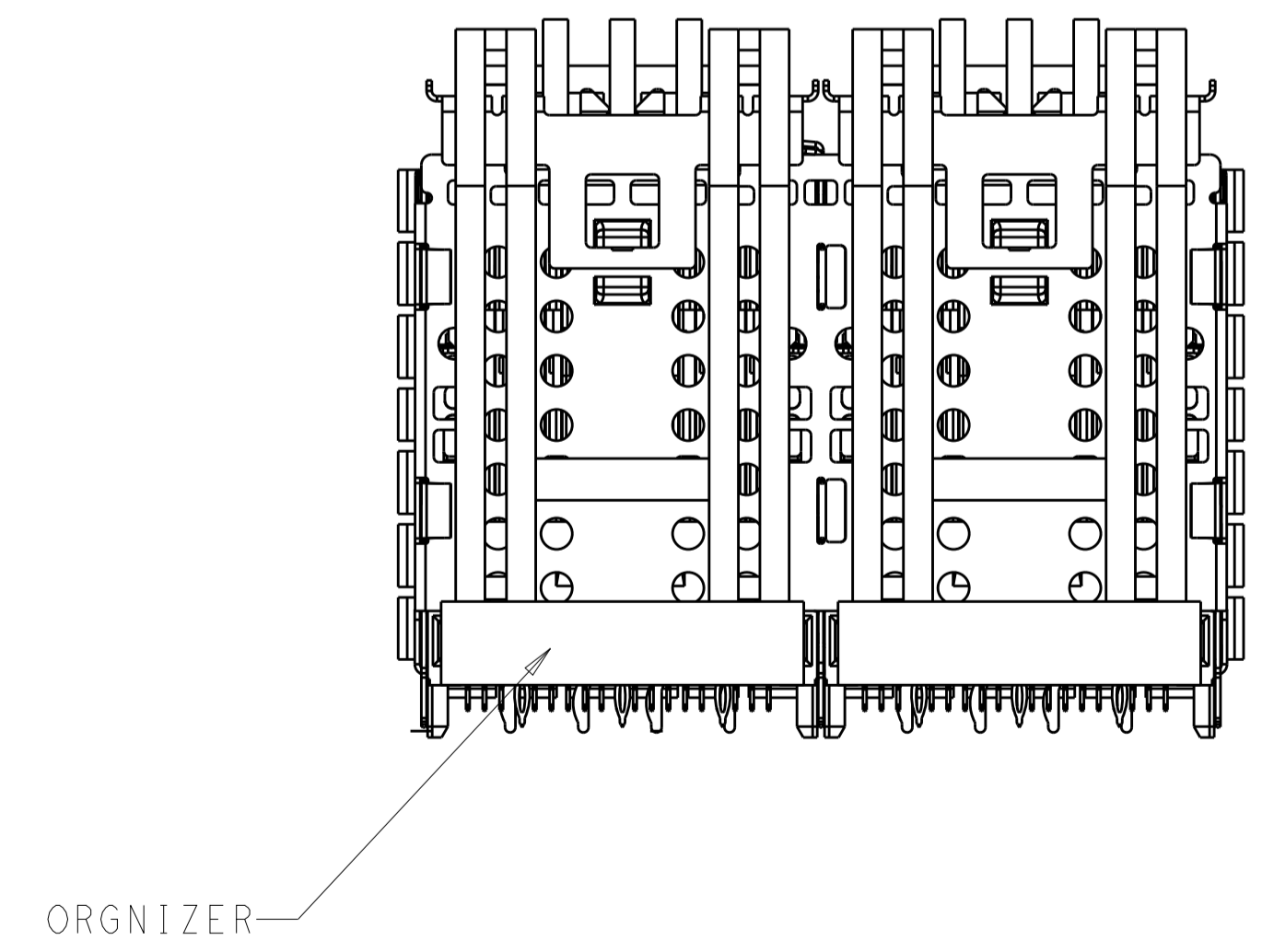
RECOMMENDED PANEL CUTOUT
 AND PC BOARD PANEL POSITION
 SCALE 5:2



SECTION U-U



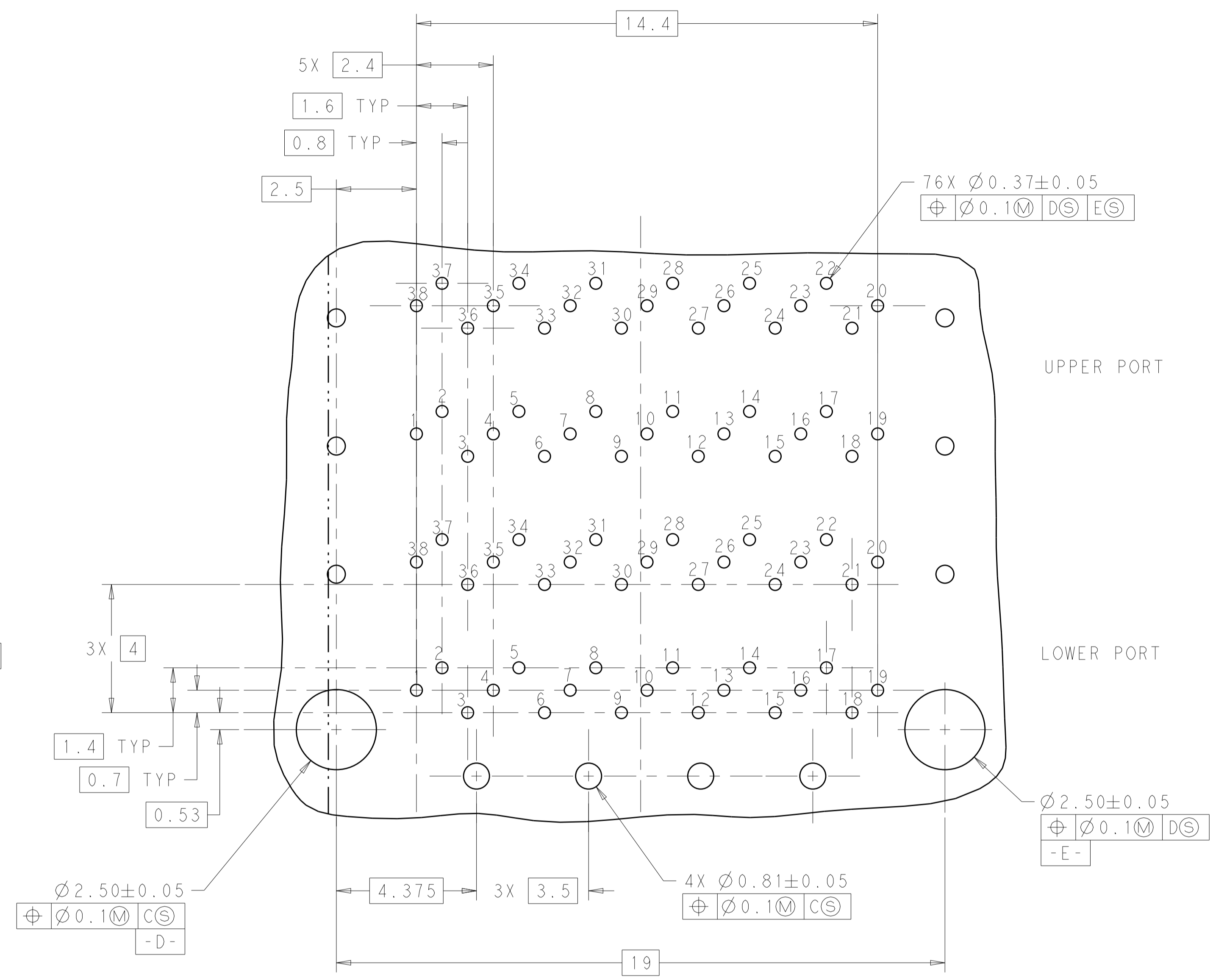
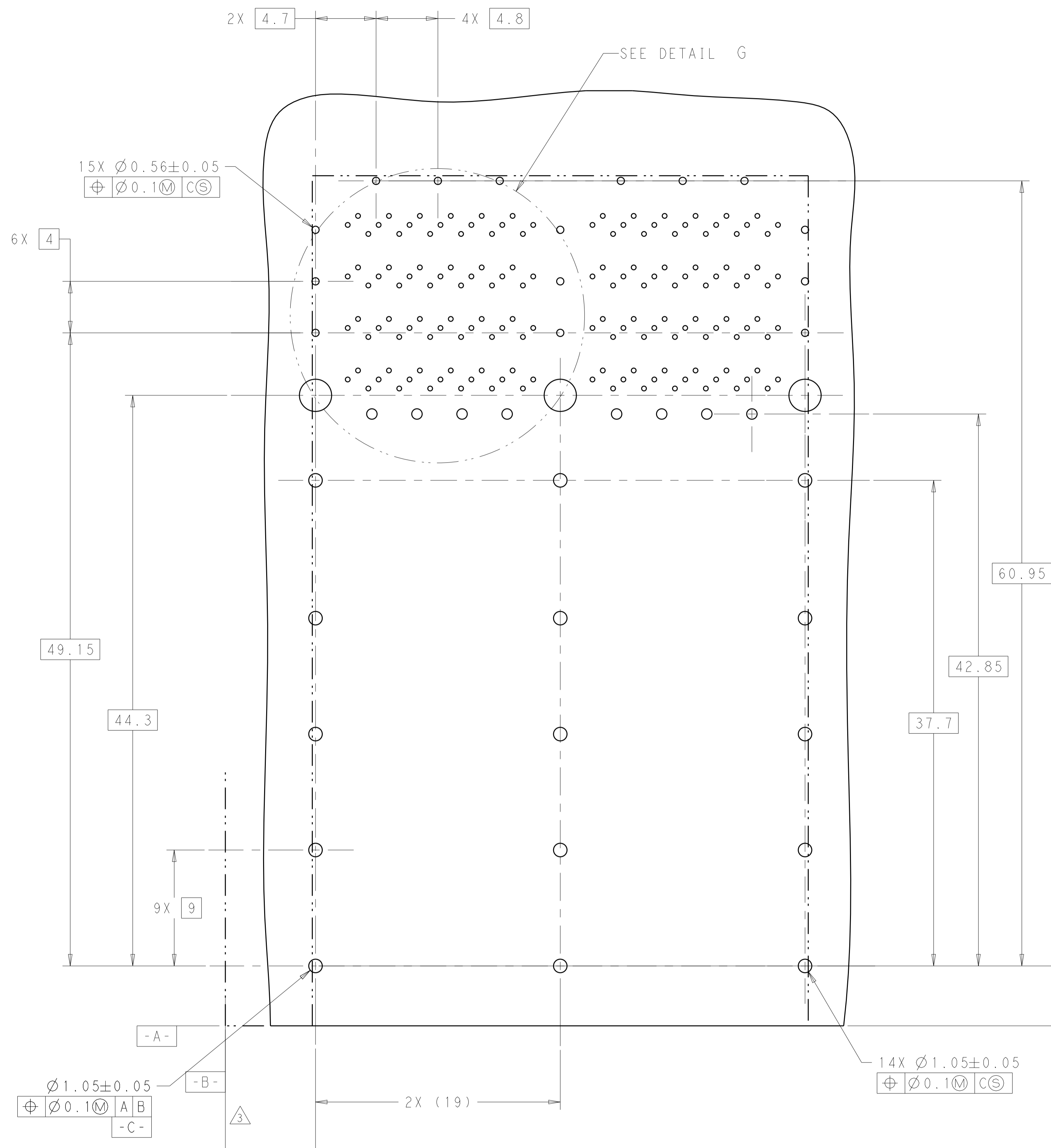
2299870-1 BEZEL LOCATION AS SHOWN
 SECTION V-V
 SCALE 3:1



ORGANIZER

| | | | | |
|--|--|-------------------------------|---|------------------------------|
| THIS DRAWING IS A CONTROLLED DOCUMENT. | | DMN TIM XUE 28JAN2016 | TE Connectivity | |
| DIMENSIONS: | | CHK SEAN HAN 28JAN2016 | NAME | |
| mm | TOLERANCES UNLESS OTHERWISE SPECIFIED: | APVD SEAN HAN 28JAN2016 | CAGE AND CONNECTOR ASSEMBLY WITH EMI SPRING FINGERS, THRU BEZEL, 2X2 ZQSFP+ STACKED WITH HS | |
| 0 PLC ± | 1 PLC ±0.25 | PRODUCT SPEC | SIZE | RESTRICTED TO |
| 2 PLC ±0.15 | 3 PLC ± | 108-60102 | A1 | |
| 4 PLC ± | ANGLES ± | APPLICATION SPEC | CAGE CODE | DRAWING NO |
| MATERIAL | FINISH | 114-60015 | 100779 | 2299870 |
| SEE NOTE 1 | SEE NOTE 2 | WEIGHT | CUSTOMER DRAWING | SCALE 4:1 SHEET 6 OF 8 REV B |

| LOC | DIST | REVISIONS | | | |
|-----|------|-----------|-------------|----|------|
| GP | 00 | REV | DATE | BY | APPD |
| | | 1 | SEE SHEET 1 | | |

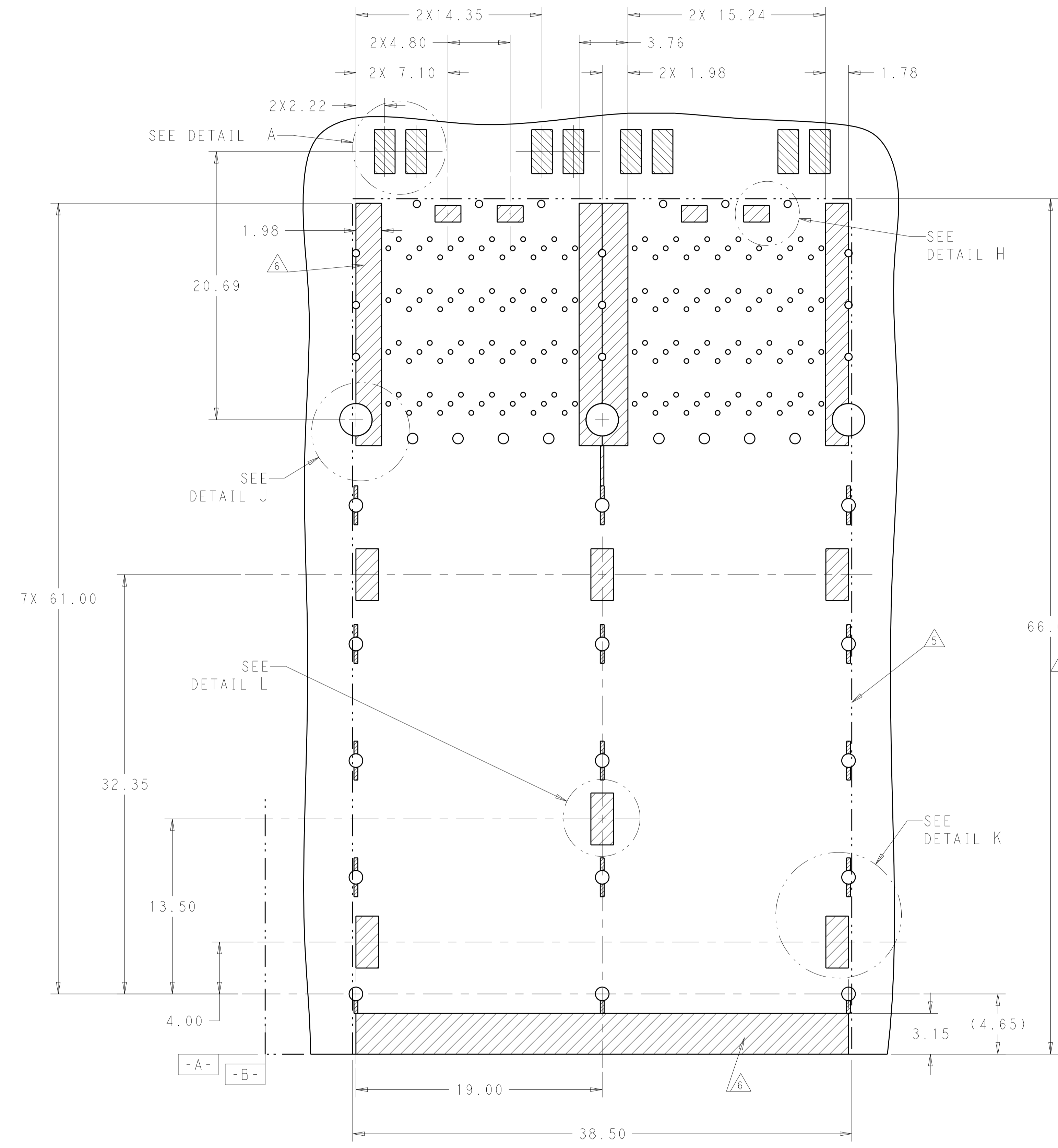


DETAIL G
SCALE 10:1

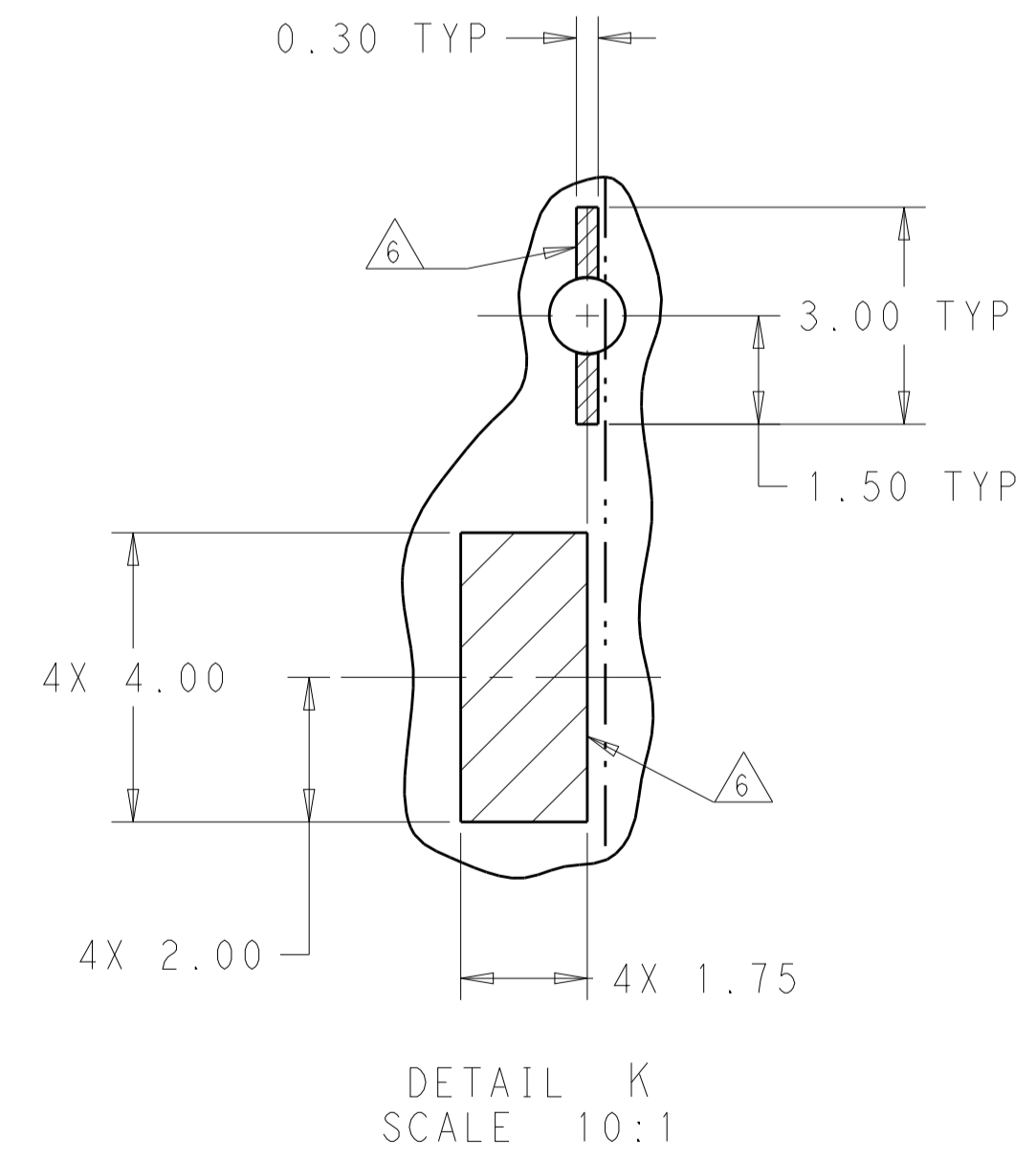
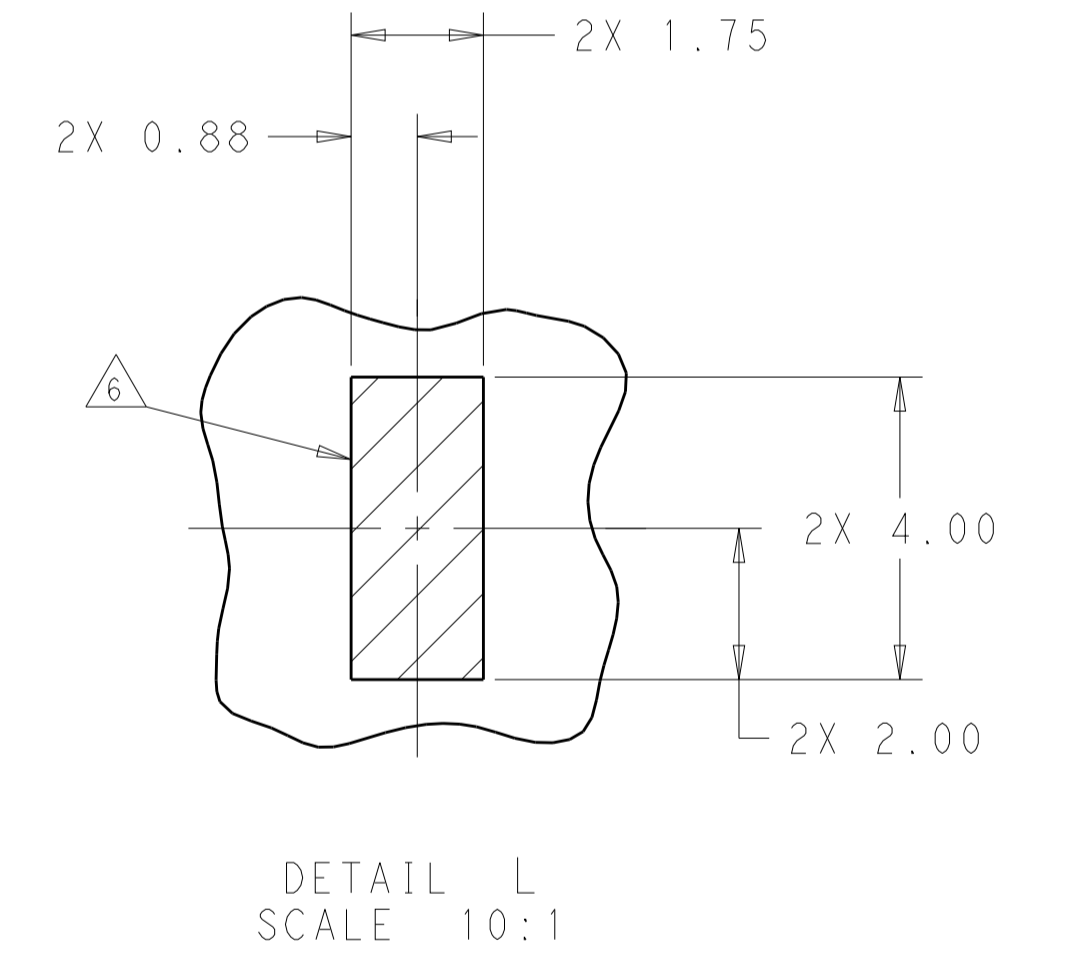
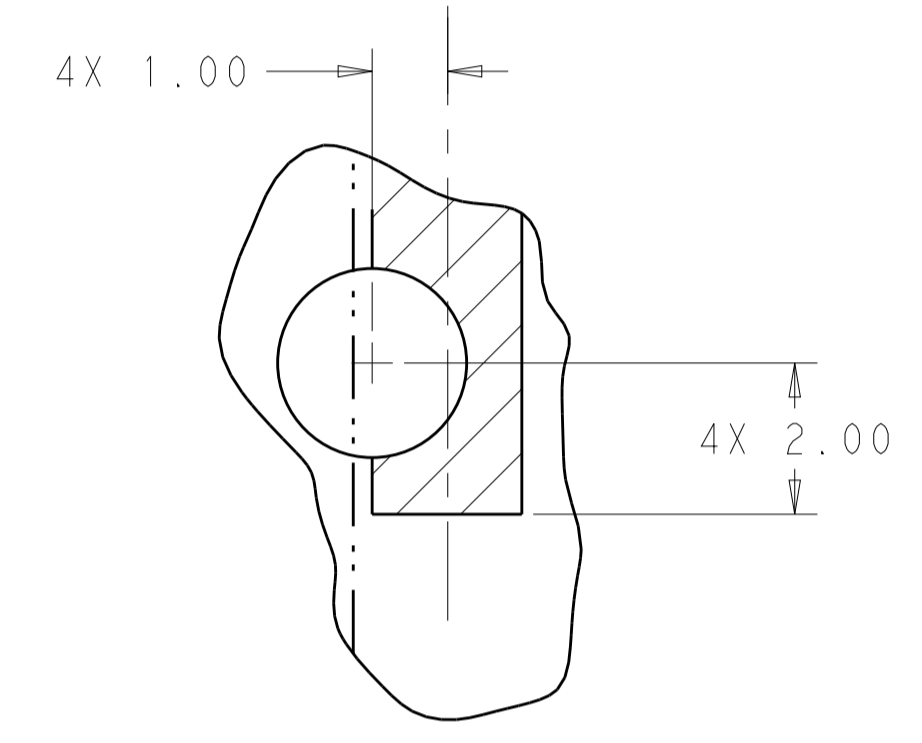
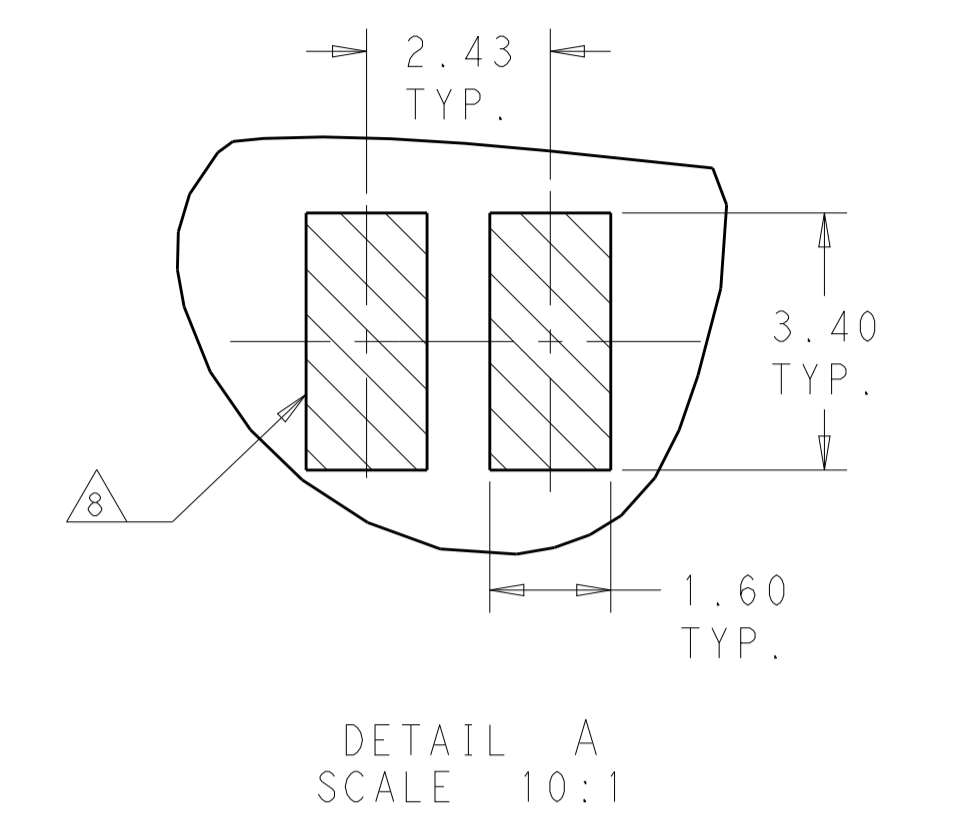
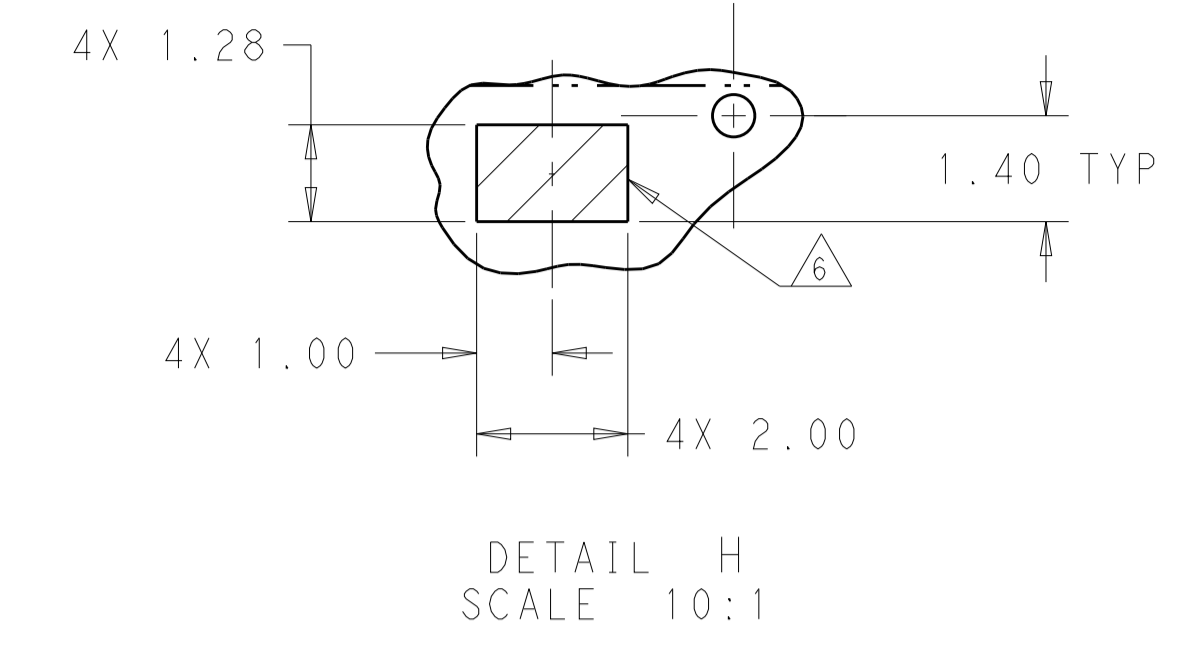
RECOMMENDED PC BOARD LAYOUT
 COMPONENT SIDE OF BOARD
 (PCB TOLERANCE ±0.05)
 SCALE 5:1

| | | | |
|---|--------------------|--|---|
| THIS DRAWING IS A CONTROLLED DOCUMENT. | | OWN: TIM XUE 28JAN2016 | TE Connectivity |
| DIMENSIONS: mm | | CHK: SEAN HAN 28JAN2016 | |
| TOLERANCES UNLESS OTHERWISE SPECIFIED: | | APPD: SEAN HAN 28JAN2016 | |
| 0 PLC ± 1 PLC ±0.25 2 PLC ±0.15 3 PLC ± 4 PLC ± ANGLES ± | | NAME: CAGE AND CONNECTOR ASSEMBLY WITH EMI SPRING FINGERS, THRU BEZEL, 2X2 ZQSFP+ STACKED WITH HS PRODUCT SPEC: 108-60102 APPLICATION SPEC: 114-60015 WEIGHT: - CUSTOMER DRAWING | |
| MATERIAL: SEE NOTE 1 | FINISH: SEE NOTE 2 | SIZE: A1 | CAGE CODE: 100779 DRAWING NO: C=2299870 SCALE: 4:1 SHEET: 7 OF 8 REV: B |

| LOC | DIST | REV | DATE | BY | APPD |
|-----|------|-----|------|----|------|
| GP | 00 | | | | |



KEEPOUT AREAS
 COMPONENT SIDE OF BOARD
 (PCB TOLERANCE ±0.05)
 SCALE 5:1



| | | | |
|--|--|---------------------------------|---|
| THIS DRAWING IS A CONTROLLED DOCUMENT. | | OWN: TIM XUE 28JAN2016 | TE Connectivity |
| DIMENSIONS: mm | | CHK: SEAN HAN 28JAN2016 | |
| TOLERANCES UNLESS OTHERWISE SPECIFIED: | | APPD: SEAN HAN 28JAN2016 | NAME: CAGE AND CONNECTOR ASSEMBLY WITH EMI SPRING FINGERS, THRU BEZEL, 2X2 ZQSF+ STACKED WITH HS PRODUCT SPEC: 108-60102 APPLICATION SPEC: 114-60015 SIZE: 114-60015 WEIGHT: - CAGE CODE: A100779 DRAWING NO: C=2299870 |
| MATERIAL: SEE NOTE 1 | | RESTRICTED TO: CUSTOMER DRAWING | |
| FINISH: SEE NOTE 2 | | SCALE: 4:1 | |
| | | SHEET: 8 OF 8 | |



Компания «ЭлектроПласт» предлагает заключение долгосрочных отношений при поставках импортных электронных компонентов на взаимовыгодных условиях!

Наши преимущества:

- Оперативные поставки широкого спектра электронных компонентов отечественного и импортного производства напрямую от производителей и с крупнейших мировых складов;
- Поставка более 17-ти миллионов наименований электронных компонентов;
- Поставка сложных, дефицитных, либо снятых с производства позиций;
- Оперативные сроки поставки под заказ (от 5 рабочих дней);
- Экспресс доставка в любую точку России;
- Техническая поддержка проекта, помощь в подборе аналогов, поставка прототипов;
- Система менеджмента качества сертифицирована по Международному стандарту ISO 9001;
- Лицензия ФСБ на осуществление работ с использованием сведений, составляющих государственную тайну;
- Поставка специализированных компонентов (Xilinx, Altera, Analog Devices, Intersil, Interpoint, Microsemi, Aeroflex, Peregrine, Syfer, Eurofarad, Texas Instrument, Miteq, Cobham, E2V, MA-COM, Hittite, Mini-Circuits, General Dynamics и др.);

Помимо этого, одним из направлений компании «ЭлектроПласт» является направление «Источники питания». Мы предлагаем Вам помощь Конструкторского отдела:

- Подбор оптимального решения, техническое обоснование при выборе компонента;
- Подбор аналогов;
- Консультации по применению компонента;
- Поставка образцов и прототипов;
- Техническая поддержка проекта;
- Защита от снятия компонента с производства.



Как с нами связаться

Телефон: 8 (812) 309 58 32 (многоканальный)

Факс: 8 (812) 320-02-42

Электронная почта: org@eplast1.ru

Адрес: 198099, г. Санкт-Петербург, ул. Калинина, дом 2, корпус 4, литера А.