



**Is Now Part of**



**ON Semiconductor®**

**To learn more about ON Semiconductor, please visit our website at**  
**[www.onsemi.com](http://www.onsemi.com)**

Please note: As part of the Fairchild Semiconductor integration, some of the Fairchild orderable part numbers will need to change in order to meet ON Semiconductor's system requirements. Since the ON Semiconductor product management systems do not have the ability to manage part nomenclature that utilizes an underscore (\_), the underscore (\_) in the Fairchild part numbers will be changed to a dash (-). This document may contain device numbers with an underscore (\_). Please check the ON Semiconductor website to verify the updated device numbers. The most current and up-to-date ordering information can be found at [www.onsemi.com](http://www.onsemi.com). Please email any questions regarding the system integration to [Fairchild\\_questions@onsemi.com](mailto:Fairchild_questions@onsemi.com).

ON Semiconductor and the ON Semiconductor logo are trademarks of Semiconductor Components Industries, LLC dba ON Semiconductor or its subsidiaries in the United States and/or other countries. ON Semiconductor owns the rights to a number of patents, trademarks, copyrights, trade secrets, and other intellectual property. A listing of ON Semiconductor's product/patent coverage may be accessed at [www.onsemi.com/site/pdf/Patent-Marking.pdf](http://www.onsemi.com/site/pdf/Patent-Marking.pdf). ON Semiconductor reserves the right to make changes without further notice to any products herein. ON Semiconductor makes no warranty, representation or guarantee regarding the suitability of its products for any particular purpose, nor does ON Semiconductor assume any liability arising out of the application or use of any product or circuit, and specifically disclaims any and all liability, including without limitation special, consequential or incidental damages. Buyer is responsible for its products and applications using ON Semiconductor products, including compliance with all laws, regulations and safety requirements or standards, regardless of any support or applications information provided by ON Semiconductor. "Typical" parameters which may be provided in ON Semiconductor data sheets and/or specifications can and do vary in different applications and actual performance may vary over time. All operating parameters, including "Typicals" must be validated for each customer application by customer's technical experts. ON Semiconductor does not convey any license under its patent rights nor the rights of others. ON Semiconductor products are not designed, intended, or authorized for use as a critical component in life support systems or any FDA Class 3 medical devices or medical devices with a same or similar classification in a foreign jurisdiction or any devices intended for implantation in the human body. Should Buyer purchase or use ON Semiconductor products for any such unintended or unauthorized application, Buyer shall indemnify and hold ON Semiconductor and its officers, employees, subsidiaries, affiliates, and distributors harmless against all claims, costs, damages, and expenses, and reasonable attorney fees arising out of, directly or indirectly, any claim of personal injury or death associated with such unintended or unauthorized use, even if such claim alleges that ON Semiconductor was negligent regarding the design or manufacture of the part. ON Semiconductor is an Equal Opportunity/Affirmative Action Employer. This literature is subject to all applicable copyright laws and is not for resale in any manner.

# USB1T1105A

# Universal Serial Bus Peripheral Transceiver with Voltage Regulator

## General Description

The USB1T1105A is an Universal Serial Bus Specification Rev 2.0 compliant transceiver. The device provides an USB interface for Full-Speed (12Mbit/s) USB applications. The USB1T1105A provides excellent flexibility, allowing differential and single ended inputs while an integrated voltage regulator sets the I/O level to 1.65V to 3.6V. Utilizing an integrated 5.0V to 3.3V voltage regulator, the part can be powered directly from the USB host ( $V_{BUS}$ ) to minimize the power consumed from the local sources while used in devices with low supply voltages.

The USB1T1105A provides 15kV ESD protection on the USB bus pins (D+/D-). This eliminates the need for any external ESD devices while providing excellent protection to larger and more expensive ASICs and USB controllers.

## Features

- Complies with Universal Serial Bus Specification 2.0
- Integrated 5V to 3.3V voltage regulator for powering VBus
- Utilizes digital inputs and outputs to transmit and receive USB cable data
- Supports full speed 12Mbps/s speed data rates
- Ideal for portable electronic devices
- 15kV contact HBM ESD protection on bus pins
- 3.3mm leadless package
- Industry standard HBCC footprint is lead-free

## Applications

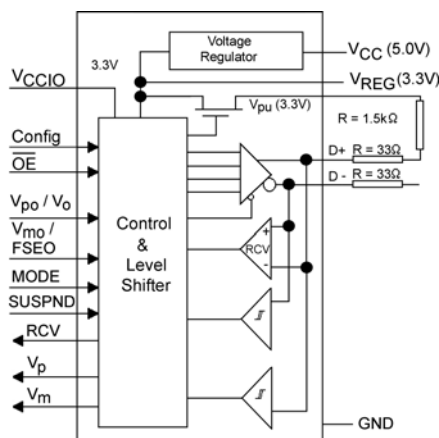
- Cell phone
- PDA
- Digital camera
- MP3

**Ordering Code:**

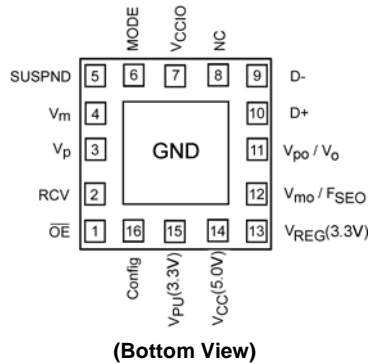
| Order Number  | Package Number | Package Description   |
|---------------|----------------|---|
| USB1T1105AMHX | MLP16HB        | Pb-Free 16-Terminal Molded Leadless Package (MHBCC), JEDEC MO-217, 3mm Square |

Pb-Free package per JEDEC J-STD-020B.

## Logic Diagram



## Connection Diagram



## Terminal Descriptions

| Terminal Number | Terminal Name      | I/O  | Terminal Description  |
|-----------------|--------------------|------|---|
| 1               | $\overline{OE}$    | I    | Output Enable: Active LOW enables the transceiver to transmit data on the bus. When not active the transceiver is in the receive mode (CMOS level is relative to $V_{CCIO}$ )   |
| 2               | RCV                | O    | Receive Data Output: Non-inverted CMOS level output for USB differential Input (CMOS output level is relative to $V_{CCIO}$ ). Driven LOW when SUSPN is HIGH; RCV output is stable and preserved during SE0 condition.        |
| 3               | $V_p$              | O    | Single-ended D+ receiver output $V_p$ (CMOS level relative to $V_{CCIO}$ ): Used for external detection of SEO, error conditions, speed of connected device; Driven HIGH when no supply connected to $V_{CC}$ and $V_{REG}$ . |
| 4               | $V_m$              | O    | Single-ended D- receiver output $V_m$ (CMOS level relative to $V_{CCIO}$ ): Used for external detection of SEO, error conditions, speed of connected device; Driven HIGH when no supply connected to $V_{CC}$ and $V_{REG}$ . |
| 5               | SUSPND             | I    | Suspend:<br>Enables a low power state (CMOS level is relative to $V_{CCIO}$ ). While the SUSPND pin is active (HIGH) it will drive the RCV pin to logic "0" state.  |
| 6               | MODE               | I    | MODE input (CMOS level is relative to $V_{CCIO}$ ). A HIGH selects the differential input MODE ( $V_{po}$ , $V_{mo}$ ) whereas a LOW enables the single-ended MODE ( $V_o$ , $V_{FSEO}$ ) see Table 2 and Table 3             |
| 7               | $V_{CCIO}$         |      | Supply Voltage for digital I/O pins (1.65V to 3.6V):<br>When not connected the D+ and D- pins are in 3-STATE. This supply bus is totally independent of $V_{CC}$ (5V) and $V_{REG}$ (3.3V).                                   |
| 8               | NC                 | NC   |   |
| 10, 9           | D+, D-             | AI/O | Data +, Data -: Differential data bus conforming to the USB standard.   |
| 11              | $V_{po} / V_o$     | I    | Driver Data Input (CMOS level is relative to $V_{CCIO}$ ); Schmitt trigger input; see Table 2 and Table 3   |
| 12              | $V_{mo} / F_{SEO}$ | I    | Driver Data Input (CMOS level is relative to $V_{CCIO}$ ); Schmitt trigger input; see Table 2 and Table 3   |
| 13              | $V_{REG}$ (3.3V)   |      | Internal Regulator Option:<br>Regulated supply output voltage (3.0V to 3.6V) during 5V operation; decoupling capacitor of at least 0.1 $\mu$ F is required.   |
| 14              | $V_{CC}$ (5.0V)    |      | Internal Regulator Option:<br>Used as supply voltage input (4.0V to 5.5V); can be connected directly to USB line Vbus.  |

| Terminal Number | Terminal Name          | I/O | Terminal Description   |
|-----------------|------------------------|-----|--|
| 15              | V <sub>PU</sub> (3.3V) |     | Pull-up Supply Voltage (3.3V $\pm$ 10%);<br>Connect an external 1.5k $\Omega$ resistor on D+ (FS data rate);<br>Pin function is controlled by Config input pin:<br>Config = LOW – V <sub>PU</sub> (3.3V) is floating (High Impedance) for zero pull-up current.<br>Config = HIGH – V <sub>PU</sub> (3.3V) = 3.3V; internally connected to V <sub>REG</sub> (3.3V). |
| 16              | Config                 | I   | USB connect or disconnect software control input.<br>Configures 3.3V to external 1.5k $\Omega$ resistor on D+ when HIGH.   |
| Exposed Diepad  | GND                    | GND | GND supply down bonded to exposed diepad to be connected to the PCB GND.   |

## Functional Description

The USB1T1105A transceiver is designed to convert CMOS data into USB differential bus signal levels and to convert USB differential bus signal to CMOS data.

To minimize EMI and noise the outputs are edge rate controlled with the rise and fall times controlled and defined for full speed data rates. The rise, fall times are balanced between the differential pins to minimize skew.

Table 1 describes the specific pin functionality selection. Table 2, Table 3, and Table 4 describe the specific Truth Tables for Driver and Receiver operating functions.

The USB1T1105A also has the capability of various power supply configurations to support mixed voltage supply applications (see Table 5) and Power Supply Configurations and Options for detailed descriptions.

## Functional Tables

TABLE 1. Function Select

| SUSPND | $\overline{\text{OE}}$ | D+, D–                | RCV                  | V <sub>p</sub> /V <sub>m</sub> | Function   |
|--------|------------------------|-----------------------|----------------------|--------------------------------|--|
| L      | L                      | Driving & Receiving   | Active               | Active                         | Normal Driving<br>(Differential Receiver Active)           |
| L      | H                      | Receiving<br>(Note 1) | Active               | Active                         | Receiving  |
| H      | L                      | Driving               | Inactive<br>(Note 2) | Active                         | Driving during Suspend<br>(Differential Receiver Inactive) |
| H      | H                      | 3-STATE<br>(Note 1)   | Inactive<br>(Note 2) | Active                         | Low Power State  |

**Note 1:** Signal levels is function of connection and/or pull-up/pull-down resistors.

**Note 2:** For SUSPND = HIGH mode the differential receiver is inactive and the output RCV output is forced LOW. The out-of-suspend signaling (K) is detected via the single-ended receiver outputs of the V<sub>p</sub> and V<sub>m</sub> pins.

TABLE 2. Driver Function ( $\overline{\text{OE}} = \text{L}$ ) using Differential Input Interface Mode Pin = H

| V <sub>mo</sub> | V <sub>po</sub> | Data                 |
|-----------------|-----------------|----------------------|
| L               | L               | SE0 (Note 3)         |
| L               | H               | Differential Logic 1 |
| H               | L               | Differential Logic 0 |
| H               | H               | Illegal State        |

**Note 3:** SE0 = Single Ended Zero

TABLE 3. Driver Function ( $\overline{\text{OE}} = \text{L}$ ) using Single-ended Input Interface Mode Pin = L

| FSE0 | V <sub>o</sub> | Data                 |
|------|----------------|----------------------|
| L    | L              | Differential Logic 0 |
| L    | H              | Differential Logic 1 |
| H    | L              | SE0 (Note 4)         |
| H    | H              | SE0 (Note 4)         |

Note 4: SE0 = Single Ended Zero

TABLE 4. Receiver Function ( $\overline{OE} = H$ )

| D+, D–               | RCV | V <sub>p</sub> | V <sub>m</sub> |
|----------------------|-----|----------------|----------------|
| Differential Logic 1 | H   | H              | L              |
| Differential Logic 0 | L   | L              | H              |
| SE0                  | X   | L              | L              |
| Sharing Mode         | L   | H              | H              |

X = Don't Care

## Power Supply Configurations and Options

The three modes of power supply operation are:

- Normal Mode: Regulated Output and Regulator Bypass
  1. Regulated Output: V<sub>CCIO</sub> is connected and V<sub>CC</sub> (5.0) is connected to 5V (4.0V to 5.5V) and the internal voltage regulator then produces 3.3V for the USB connections.
  2. Internal Regulator Bypass Mode: V<sub>CCIO</sub> is connected and both V<sub>CC</sub>(5.5) and V<sub>REG</sub>(3.3) are connected to a 3.3V source (3.0V to 3.6V).

In both cases for normal mode the V<sub>CCIO</sub> is an independent voltage source (1.65V to 3.6V) that is a function of the external circuit configuration.
- Sharing Mode: V<sub>CCIO</sub> is only supply connected. V<sub>CC</sub> and V<sub>REG</sub> are not connected. In this mode the D+ and D– pins are

3-STATE and the USB1T1105A allows external signals up to 3.6V to share the D+ and D– bus lines. Internally the circuitry limits leakage from D+ and D– pins (maximum 10  $\mu$ A) and V<sub>CCIO</sub> such that device is in low power (suspended) state. Terminals Vbusmon and RCV are forced LOW as an indication of this mode with Vbusmon being ignored during this state.

- Disable Mode: V<sub>CCIO</sub> is not connected. V<sub>CC</sub> is connected, or V<sub>CC</sub> and V<sub>REG</sub> are connected. 0V to 3.3V in this mode D+ and D– are 3-STATE and V<sub>PU</sub> is HIGH Impedance (switch is turned off). The USB1T1105A allows external signals up to 3.6V to share the D+ and D– bus lines. Internally the circuitry limits leakage from D+ and D– terminals (maximum 10 $\mu$ A).

A summary of the Supply Configurations is described in Table 5.

TABLE 5. Power Supply Configuration Options

| Pins   | Power Supply Mode Configuration |                                       |                                       |  |
|--|---------------------------------|---------------------------------------|---------------------------------------|--|
|  | Sharing                         | Disable                               | Normal (Regulated Output)             | Normal (Regulator Bypass)  |
| V <sub>CC</sub> (5V)   | < 3.6V                          | Connected to 5V Source                | Connected to 5V Source                | Connected to V <sub>REG</sub> (3.3V) [max drop of 0.3V] (2.7V to 3.6V) |
| V <sub>REG</sub> (3.3V)  | Pulled LOW<br>Regulator OFF     | 3.3V, 300 $\mu$ A<br>Regulated Output | 3.3V, 300 $\mu$ A<br>Regulated Output | Connected to 3.3V Source   |
| V <sub>CCIO</sub>  | 1.65V to 3.6V Source            | Not Connected                         | 1.65V to 3.6V Source                  | 1.65V to 3.6V Source   |
| V <sub>PU</sub> (3.3V)   | 3-STATE (Off)                   | 3-STATE (Off)                         | 3.3V Available if<br>Config = HIGH    | 3.3V Available if<br>Config = HIGH                                     |
| D+, D–   | 3-STATE                         | 3-STATE                               | Function of Mode Set Up               | Function of Mode Set Up  |
| V <sub>p</sub> , V <sub>m</sub>  | H                               | Invalid                               | Function of Mode Set Up               | Function of Mode Set Up  |
| RCV  | L                               | Invalid                               | Function of Mode Set Up               | Function of Mode Set Up  |
| OE, SUSPND,<br>Config, V <sub>po</sub> /V <sub>o</sub> ,<br>V <sub>mo</sub> /F <sub>SEO</sub> , MODE | Hi-Z                            | Hi-Z                                  | Function of Mode Set Up               |  |

Note 5: Hi-Z or forced LOW.

**Absolute Maximum Ratings**(Note 6)

|   |                            |
|---|----------------------------|
| Supply Voltage ( $V_{CC}$ )(5V)         | -0.5V to +6.0V             |
| I/O Supply Voltage ( $V_{CCIO}$ )       | -0.5V to +4.6V             |
| Latch-up Current ( $I_{LU}$ )           |                            |
| $V_I = -1.8V$ to $+5.4V$                | 150 mA                     |
| DC Input Current ( $I_{IK}$ )           |                            |
| $V_I < 0$                               | -18 mA                     |
| DC Input Voltage ( $V_I$ )              |                            |
| (Note 7)                                | -0.5V to $V_{CCIO} + 0.5V$ |
| DC Output Diode Current ( $I_{OK}$ )    |                            |
| $V_O > V_{CC}$ or $V_O < 0$             | $\pm 18$ mA                |
| DC Output Voltage ( $V_O$ )             |                            |
| (Note 7)                                | -0.5V to $V_{CCIO} + 0.5V$ |
| Output Source or Sink Current ( $I_O$ ) |                            |
| $V_O = 0$ to $V_{CC}$                   |                            |
| Current for D+, D- Pins                 | $\pm 12$ mA                |
| Current for RCV, $V_m/V_p$              | $\pm 12$ mA                |
| DC $V_{CC}$ or GND Current              |                            |
| ( $I_{CC}$ , $I_{GND}$ )                | $\pm 100$ mA               |
| ESD Immunity Voltage ( $V_{ESD}$ );     |                            |
| Contact HBM                             |                            |
| Pins D+, D-, and GND                    | 15kV                       |
| All Other Pins                          | 2.5kV                      |
| Storage Temperature ( $T_{STO}$ )       | -40°C to + 125°C           |
| Power Dissipation ( $P_{TOT}$ )         |                            |
| $I_{CC}$ (5V)                           | 48 mW                      |
| $I_{CCIO}$                              | 9 mW                       |

**Recommended Operating Conditions**

|  |                         |
|--|-------------------------|
| DC Supply Voltage $V_{CC}$ (5V)        | 4.0V to 5.5V            |
| I/O DC Voltage $V_{CCIO}$              | 1.65V to 3.6V           |
| DC Input Voltage Range ( $V_I$ )       | 0V to $V_{CCIO} + 0.5V$ |
| DC Input Range for AI/O ( $V_{IA/O}$ ) | 0V to 3.6V              |
| Pins D+ and D-                         | 0V to 3.6V              |
| Operating Ambient Temperature          |                         |
| ( $T_{AMB}$ )                          | -40°C to +85°C          |

**Note 6:** The Absolute Maximum Ratings are those values beyond which the safety of the device cannot be guaranteed. The device should not be operated at these limits. The parametric values defined in the Electrical Characteristic tables are not guaranteed at the absolute maximum rating. The "Recommended Operating Conditions" table will define the conditions for actual device operation.

**Note 7:** IO Absolute Maximum Rating must be observed.

**DC Electrical Characteristics** (Supply Pins)

Over recommended range of supply voltage and operating free air temperature (unless otherwise noted).  
 $V_{CC}$  (5V) = 4.0V to 5.5V or  $V_{REG}$  (3.3V) = 3.0V to 3.6V,  $V_{CCIO}$  = 1.65V to 3.6V

| Symbol                      | Parameter  | Conditions   | Limits                  |                  |                   | Units |
|-----------------------------|--|--|-------------------------|------------------|-------------------|-------|
|                             |  |  | −40°C to +85°C          |                  |                   |       |
|                             |  |  | Min                     | Typ              | Max               |       |
| V <sub>REG</sub> (3.3V)     | Regulated Supply Output  | Internal Regulator Option;<br>I <sub>LOAD</sub> ≤ 300 μA   | 3.0<br>(Note 8)(Note 9) | 3.3              | 3.6               | V     |
| I <sub>CC</sub>             | Operating Supply Current (V <sub>CC</sub> 5.0)                 | Transmitting and Receiving at<br>12 Mbits/s; C <sub>LOAD</sub> = 50 pF (D+, D−)                              |                         | 4.0<br>(Note 10) | 8.0               | mA    |
| I <sub>CCIO</sub>           | I/O Operating Supply Current                                   | Transmitting and Receiving at<br>12 Mbits/s  |                         | 1.0<br>(Note 10) | 2.0               | mA    |
| I <sub>CC</sub> (IDLE)      | Supply Current during<br>FS IDLE and SE0 (V <sub>CC</sub> 5.0) | IDLE: V <sub>D+</sub> ≥ 2.7V, V <sub>D−</sub> ≤ 0.3V;<br>SE0: V <sub>D+</sub> ≤ 0.3V, V <sub>D−</sub> ≤ 0.3V |                         |                  | 500<br>(Note 11)  | μA    |
| I <sub>CCIO</sub> (STATIC)  | I/O Static Supply Current                                      | IDLE, SUSPND or SE0  |                         |                  | 20.0              | μA    |
| I <sub>CC</sub> (SUSPND)    | Suspend Supply Current<br>USB1T1105A                           | SUSPND = HIGH<br>OE = HIGH<br>V <sub>m</sub> = V <sub>p</sub> = OPEN   |                         |                  | 25.0<br>(Note 11) | μA    |
| I <sub>CCIO</sub> (SHARING) | I/O Sharing Mode Supply Current                                | V <sub>CC</sub> (5V) Not Connected   |                         |                  | 20.0              | μA    |

## DC Electrical Characteristics (Continued)

| Symbol                   | Parameter  | Conditions   | Limits         |      |      | Units |
|--------------------------|--|--|----------------|------|------|-------|
|                          |  |  | −40°C to +85°C |      |      |       |
|                          |  |  | Min            | Typ  | Max  |       |
| I <sub>D±(SHARING)</sub> | Sharing Mode Load Current on D+/D− Pins                  | V <sub>CC</sub> (5V) Not Connected<br>Config = LOW; V <sub>D±</sub> = 3.6V |                |      | 10.0 | μA    |
| V <sub>CCTH</sub>        | V <sub>CC</sub> Threshold Detection Voltage              | 1.65V ≤ V <sub>CCIO</sub> ≤ 3.6V   |                |      |      | V     |
|                          |  | Supply Lost  |                |      | 3.6  |       |
|                          |  | Supply Present   | 4.1            |      |      |       |
| V <sub>CCHYS</sub>       | V <sub>CC</sub> Threshold Detection Hysteresis Voltage   | V <sub>CCIO</sub> = 1.8V   |                | 70.0 |      | mV    |
| V <sub>CCIOTH</sub>      | V <sub>CCIO</sub> Threshold Detection Voltage            | 2.7V ≤ V <sub>REG</sub> ≤ 3.6V   |                |      |      | V     |
|                          |  | Supply Lost  |                |      | 0.5  |       |
|                          |  | Supply Present   | 1.4            |      |      |       |
| V <sub>CCIOHYS</sub>     | V <sub>CCIO</sub> Threshold Detection Hysteresis Voltage | V <sub>REG</sub> = 3.3V  |                | 450  |      | mV    |

**Note 8:**  $I_{LOAD}$  includes the pull-up resistor current via pin  $V_{PU}$

**Note 9:** The minimum voltage in Suspend mode is 2.7V.

**Note 10:** Not tested in production, value based on characterization.

**Note 11:** Excludes any current from load and  $V_{PU}$  current to the 1.5k $\Omega$  resistor.

**Note 12:** Includes current between  $V_{pu}$  and the 1.5k internal pull-up resistor.

**Note 13:** When  $V_{CCIO} < 2.7V$ , minimum value for  $V_{REG\text{TH}} = 2.0V$  for supply present condition.

## DC Electrical Characteristics (Digital Pins – excludes D+, D- Pins)

Over recommended range of supply voltage and operating free air temperature (unless otherwise noted).  $V_{CCIO} = 1.6V$  to 3.6V

| Symbol                             | Parameter                    | Test Conditions  | Limits                   |                | Units |
|------------------------------------|------------------------------|--|--------------------------|----------------|-------|
|                                    |                              |  | −40°C to +85°C           |                |       |
|                                    |                              |  | Min                      | Max            |       |
| Input Levels                       |                              |  |                          |                |       |
| V <sub>IL</sub>                    | LOW Level Input Voltage      |  |                          | 0.3            | V     |
| V <sub>IH</sub>                    | HIGH Level Input Voltage     |  | 0.6*V <sub>CCIO</sub>    |                | V     |
| V <sub>HYS</sub>                   | Hysteresis Voltage P11 + P12 | Pins V <sub>po</sub> /V <sub>mo</sub> , V <sub>CCIO</sub> = 3.3V | 0.3                      | 0.7            | V     |
| Output Levels                      |                              |  |                          |                |       |
| V <sub>OL</sub>                    | LOW Level Output Voltage     | I <sub>OL</sub> = 2 mA   |                          | 0.4            | V     |
|                                    |                              | I <sub>OL</sub> = 100 μA   |                          | 0.15           |       |
| V <sub>OH</sub>                    | HIGH Level Output Voltage    | I <sub>OH</sub> = 2 mA   | V <sub>CCIO</sub> - 0.4  |                | V     |
|                                    |                              | I <sub>OH</sub> = 100 μA   | V <sub>CCIO</sub> - 0.15 |                |       |
| Leakage Current                    |                              |  |                          |                |       |
| I <sub>LI</sub>                    | Input Leakage Current        | V <sub>CCIO</sub> = 1.65V to 3.6V                                |                          | ±1.0 (Note 14) | μA    |
| Capacitance                        |                              |  |                          |                |       |
| C <sub>IN</sub> , C <sub>I/O</sub> | Input Capacitance            | Pin to GND   |                          | 10.0           | pF    |

**Note 14:** If  $V_{CCIO} \geq V_{REG}$  then leakage current will be higher than specified.

## DC Electrical Characteristics (Analog I/O Pins – D+, D– Pins)

Over recommended range of supply voltage and operating free air temperature (unless otherwise noted).  $V_{CC} = 4.0V$  to  $5.5V$  or  $V_{REG} = 3.0V$  to  $3.6V$

| Symbol                               | Parameter                        | Test Condition                          | Limits                        |                   |      | Units |
|--------------------------------------|----------------------------------|---|-------------------------------|-------------------|------|-------|
|                                      |                                  |   | −40°C to +85°C                |                   |      |       |
|                                      |                                  |   | Min                           | Typ               | Max  |       |
| Input Levels – Differential Receiver |                                  |   |                               |                   |      |       |
| V <sub>DI</sub>                      | Differential Input Sensitivity   | V <sub>I(D+)</sub> - V <sub>I(D-)</sub> | 0.2                           |                   |      | V     |
| V <sub>CM</sub>                      | Differential Common Mode Voltage |   | 0.8                           |                   | 2.5  | V     |
| Input Levels – Single-ended Receiver |                                  |   |                               |                   |      |       |
| V <sub>IL</sub>                      | LOW Level Input Voltage          |   |                               |                   | 0.8  | V     |
| V <sub>IH</sub>                      | HIGH Level Input Voltage         |   | 2.0                           |                   |      | V     |
| V <sub>HYS</sub>                     | Hysteresis Voltage               |   | 0.4                           |                   | 0.7  | V     |
| Output Levels                        |                                  |   |                               |                   |      |       |
| V <sub>OL</sub>                      | LOW Level Output Voltage         | R <sub>L</sub> = 1.5kΩ to 3.6V          |                               |                   | 0.3  | V     |
| V <sub>OH</sub>                      | HIGH Level Output Voltage        | R <sub>L</sub> = 15kΩ to GND            | 2.8 (Note 15)                 |                   | 3.6  | V     |
| Leakage Current                      |                                  |   |                               |                   |      |       |
| I <sub>LZ</sub>                      | Input Leakage Current Off State  | $\overline{OE} = H$                     |                               |                   | ±1.0 | μA    |
| Capacitance                          |                                  |   |                               |                   |      |       |
| C <sub>I/O</sub>                     | I/O Capacitance                  | Pin to GND                              |                               |                   | 20.0 | pF    |
| Resistance                           |                                  |   |                               |                   |      |       |
| Z <sub>DRV</sub>                     | Driver Output Impedance          |   | 34.0                          | 41.0<br>(Note 16) | 44.0 | Ω     |
| Z <sub>IN</sub>                      | Driver Input Impedance           |   | 10.0                          |                   |      | MΩ    |
| R <sub>SW</sub>                      | Switch Resistance                |   |                               |                   | 10.0 | Ω     |
| V <sub>TERM</sub>                    | Termination Voltage              | R <sub>PU</sub> Upstream Port           | 3.0<br>(Note 17)<br>(Note 18) |                   | 3.6  | V     |

**Note 15:**  $V_{OH \text{ min.}} = V_{REG} - 0.2V$ .

**Note 16:** Includes external resistors of  $33\Omega$  on both D+ and D– pins.

**Note 17:** This voltage is available at pin  $V_{PU}$  and  $V_{REG}$ .

**Note 18:** Minimum voltage is 2.7V in the suspend mode.



## AC Electrical Characteristics (A I/O Pins Full Speed)

Over recommended range of supply voltage and operating free air temperature (unless otherwise noted).  $V_{CC} = 4.0V$  to  $5.5V$  or  $V_{REG} = 3.0V$  to  $3.6V$ ,  $V_{CCIO} = 1.65V$  to  $3.6V$ ,  $C_L = 50$  pF;  $R_L = 1.5K$  on  $D+$  to  $V_{PU}$

| Symbol                               | Parameter   | Test Conditions  | Limits           |     |       | Unit |
|--------------------------------------|---|--|------------------|-----|-------|------|
|                                      |   |  | -40° C to +85° C |     |       |      |
|                                      |   |  | Min              | Typ | Max   |      |
| Driver Characteristics               |   |  |                  |     |       |      |
| t <sub>FR</sub>                      | Output Rise Time  | C <sub>L</sub> = 50 – 125 pF<br>10% to 90%                                   | 4.0              |     | 20.0  | ns   |
| t <sub>FF</sub>                      | Output Fall Time  | Figures 1, 5   | 4.0              |     | 20.0  |      |
| t <sub>RFM</sub>                     | Rise/Fall Time Match  | t <sub>F</sub> / t <sub>R</sub> Excludes First Transition<br>from Idle State | 90.0             |     | 111.1 | %    |
| V <sub>CRS</sub><br>(Note 19)        | Output Signal Crossover Voltage   | Excludes First Transition from<br>Idle State see Waveform                    | 1.3              |     | 2.0   | V    |
| Driver Timing                        |   |  |                  |     |       |      |
| t <sub>PLH</sub><br>t <sub>PHL</sub> | Propagation Delay<br>(V <sub>P</sub> /V <sub>PO</sub> , V <sub>M</sub> /V <sub>MO</sub> to D+/D-)                         | Figures 2, 5   |                  |     | 18.0  | ns   |
| t <sub>PHZ</sub><br>t <sub>PLZ</sub> | Driver Disable Delay<br>( $\overline{OE}$ to D+/D-)   | Figures 4, 6   |                  |     | 15.0  | ns   |
| t <sub>PZH</sub><br>t <sub>PZL</sub> | Driver Enable Delay<br>( $\overline{OE}$ to D+/D-)  | Figures 4, 6   |                  |     | 15.0  | ns   |
| Receiver Timing                      |   |  |                  |     |       |      |
| t <sub>PLH</sub><br>t <sub>PHL</sub> | Propagation Delay (Diff)<br>(D+/D- to Rev)  | Figures 3, 7   |                  |     | 15.0  | ns   |
| t <sub>PLH</sub><br>t <sub>PHL</sub> | Single Ended Receiver Propagation Delay<br>(D+/D- to V <sub>P</sub> / V <sub>PO</sub> , V <sub>M</sub> /V <sub>MO</sub> ) | Figures 3Figure 7  |                  |     | 18.0  | ns   |

**Note 19:** Not production tested, guaranteed by characterization.

# AC Waveforms

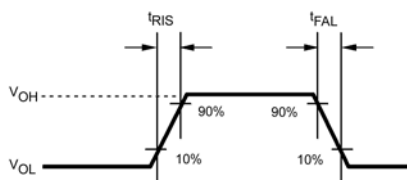


FIGURE 1. Rise and Fall Times

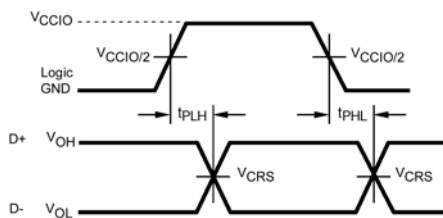


FIGURE 2.  $V_{po}/V_o$ ,  $V_{mo}/V_{SEO}$  to D+/D-

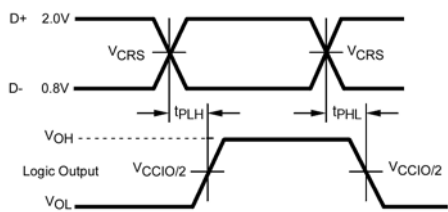


FIGURE 3. D+/D- to  $R_{CV}$ ,  $V_p$  and  $V_m$

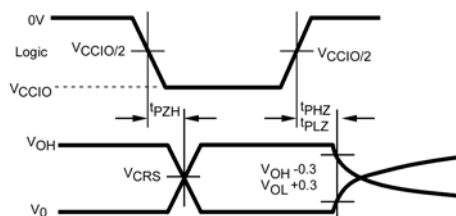
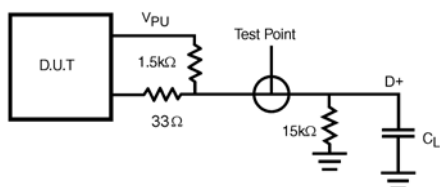


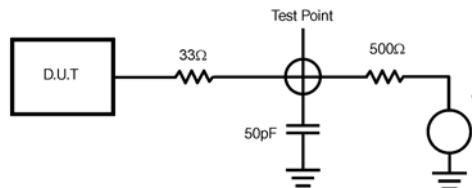
FIGURE 4.  $\overline{OE}$  to D+/D-

## Test Circuits and Waveforms



$C_L = 50 \text{ pF}$  Full Speed Propagation Delays  
 $C_L = -125 \text{ pF}$  Edge Rates only

FIGURE 5. Load for D+/D-



$V = 0$  for  $t_{PZH}$ ,  $t_{PHZ}$   
 $V = V_{REG}$  for  $t_{PZL}$

FIGURE 6. Load for Enable and Disable Times

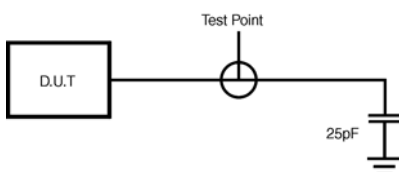


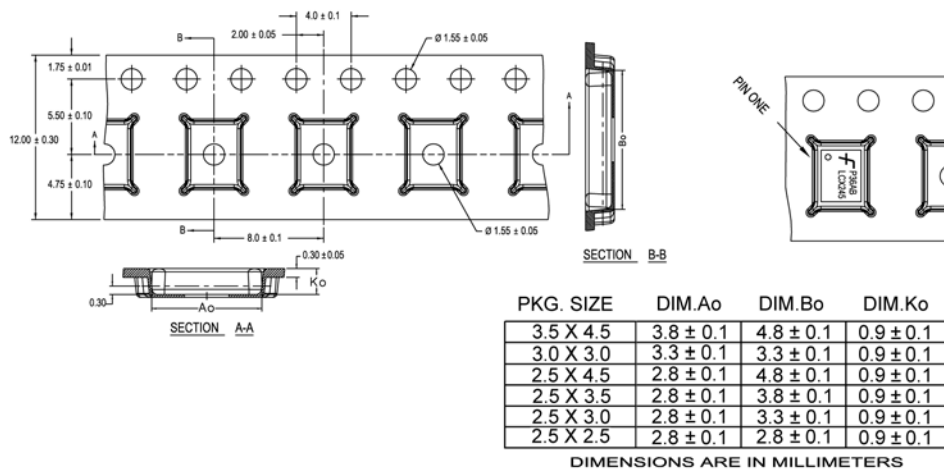
FIGURE 7. Load for  $V_m/V_{mo}$ ,  $V_p/V_{po}$  and  $R_{CV}$

## Tape and Reel Specification

### Tape Format for MHBCC

| Package Designator | Tape Section       | Number Cavities | Cavity Status | Cover Tape Status |
|--------------------|--------------------|-----------------|---------------|-------------------|
| MHX                | Leader (Start End) | 125 (typ)       | Empty         | Sealed            |
|                    | Carrier            | 2500/3000       | Filled        | Sealed            |
|                    | Trailer (Hub End)  | 75 (typ)        | Empty         | Sealed            |

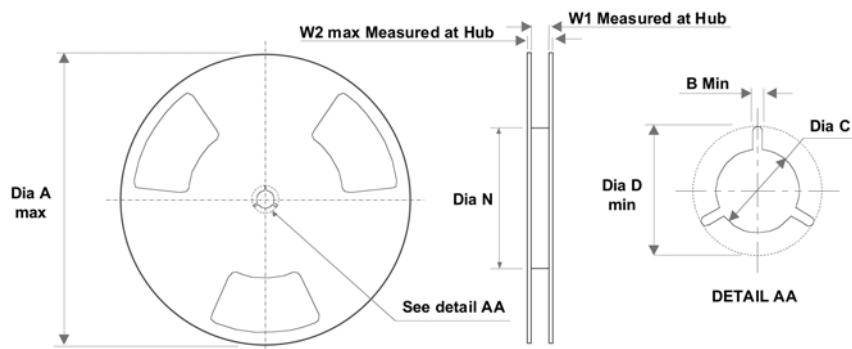
### TAPE DIMENSIONS inches (millimeters)



NOTES: unless otherwise specified

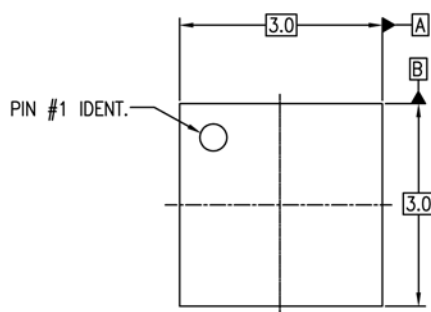
1. Cumulative pitch for feeding holes and cavities (chip pockets) not to exceed 0.008[0.20] over 10 pitch span.
2. Smallest allowable bending radius.
3. Thru hole inside cavity is centered within cavity.
4. Tolerance is  $\pm 0.002[0.05]$  for these dimensions on all 12mm tapes.
5. Ao and Bo measured on a plane 0.120[0.30] above the bottom of the pocket.
6. Ko measured from a plane on the inside bottom of the pocket to the top surface of the carrier.
7. Pocket position relative to sprocket hole measured as true position of pocket. Not pocket hole.
8. Controlling dimension is millimeter. Dimension in inches rounded.

### REEL DIMENSIONS inches (millimeters)

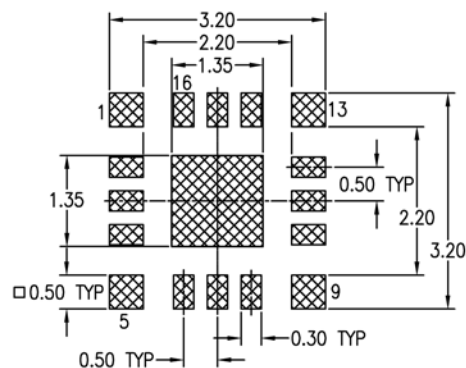


| Tape Size | A    | B      | C       | D       | N     | W1     | W2     |
|-----------|------|--------|---------|---------|-------|--------|--------|
| 12 mm     | 13.0 | 0.059  | 0.512   | 0.795   | 7.008 | 0.488  | 0.724  |
|           | 330  | (1.50) | (13.00) | (20.20) | (178) | (12.4) | (18.4) |

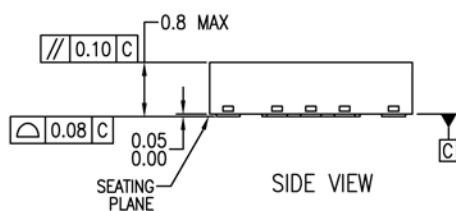
# Physical Dimensions inches (millimeters) unless otherwise noted



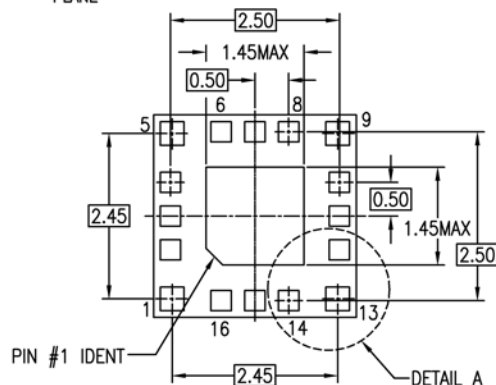
TOP VIEW



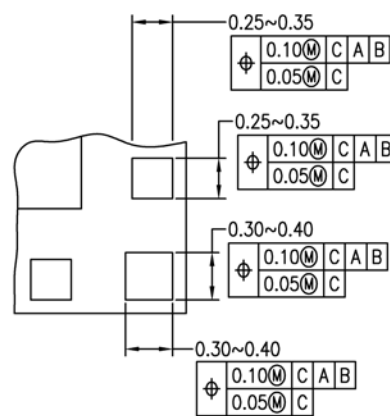
RECOMMENDED LAND PATTERN



SIDE VIEW



BOTTOM VIEW



DETAIL A

## NOTES:

- A. SIMILAR TO JEDEC REGISTRATION MO-217, DATED 11/2001
- B. DIMENSIONS ARE IN MILLIMETERS.
- C. DIMENSIONS AND TOLERANCES PER ASME Y14.5M, 1994

MLP16HBrevA

**Pb-Free 16-Terminal Molded Leadless Package (MLBCC), JEDEC MO-217, 3mm Square  
Package Number MLP16HB**

## DISCLAIMER

FAIRCHILD SEMICONDUCTOR RESERVES THE RIGHT TO MAKE CHANGES WITHOUT FURTHER NOTICE TO ANY PRODUCTS HEREIN TO IMPROVE RELIABILITY, FUNCTION OR DESIGN. FAIRCHILD DOES NOT ASSUME ANY LIABILITY ARISING OUT OF THE APPLICATION OR USE OF ANY PRODUCT OR CIRCUIT DESCRIBED HEREIN; NEITHER DOES IT CONVEY ANY LICENSE UNDER ITS PATENT RIGHTS, NOR THE RIGHTS OF OTHERS.

## LIFE SUPPORT POLICY

FAIRCHILD'S PRODUCTS ARE NOT AUTHORIZED FOR USE AS CRITICAL COMPONENTS IN LIFE SUPPORT DEVICES OR SYSTEMS WITHOUT THE EXPRESS WRITTEN APPROVAL OF FAIRCHILD SEMICONDUCTOR CORPORATION

As used herein:

1. Life support devices or systems are devices or systems which, (a) are intended for surgical implant into the body, or (b) support or sustain life, or (c) whose failure to perform when properly used in accordance with instructions for use

provided in the labeling, can be reasonably expected to result in significant injury to the user.

2. A critical component is any component of a life support device or system whose failure to perform can be reasonably expected to cause the failure of the life support device or system, or to affect its safety or effectiveness.

## PRODUCT STATUS DEFINITIONS

Definition of terms

| Datasheet Identification | Product Status         | Definition  |
|--------------------------|------------------------|---|
| Advance Information      | Formative or In Design | This datasheet contains the design specifications for product development. Specifications may change in any manner without notice.  |
| Preliminary              | First Production       | This datasheet contains preliminary data, and supplementary data will be published at a later date. Fairchild Semiconductor reserves the right to make changes at any time without notice in order to improve design. |
| No Identification Needed | Full Production        | This datasheet contains final specifications. Fairchild Semiconductor reserves the right to make changes at any time without notice in order to improve design.   |
| Obsolete                 | Not In Production      | This datasheet contains specifications on a product that has been discontinued by Fairchild Semiconductor. The datasheet is printed for reference information only.   |

ON Semiconductor and  are trademarks of Semiconductor Components Industries, LLC dba ON Semiconductor or its subsidiaries in the United States and/or other countries. ON Semiconductor owns the rights to a number of patents, trademarks, copyrights, trade secrets, and other intellectual property. A listing of ON Semiconductor's product/patent coverage may be accessed at [www.onsemi.com/site/pdf/Patent-Marking.pdf](http://www.onsemi.com/site/pdf/Patent-Marking.pdf). ON Semiconductor reserves the right to make changes without further notice to any products herein. ON Semiconductor makes no warranty, representation or guarantee regarding the suitability of its products for any particular purpose, nor does ON Semiconductor assume any liability arising out of the application or use of any product or circuit, and specifically disclaims any and all liability, including without limitation special, consequential or incidental damages. Buyer is responsible for its products and applications using ON Semiconductor products, including compliance with all laws, regulations and safety requirements or standards, regardless of any support or applications information provided by ON Semiconductor. "Typical" parameters which may be provided in ON Semiconductor data sheets and/or specifications can and do vary in different applications and actual performance may vary over time. All operating parameters, including "Typicals" must be validated for each customer application by customer's technical experts. ON Semiconductor does not convey any license under its patent rights nor the rights of others. ON Semiconductor products are not designed, intended, or authorized for use as a critical component in life support systems or any FDA Class 3 medical devices or medical devices with a same or similar classification in a foreign jurisdiction or any devices intended for implantation in the human body. Should Buyer purchase or use ON Semiconductor products for any such unintended or unauthorized application, Buyer shall indemnify and hold ON Semiconductor and its officers, employees, subsidiaries, affiliates, and distributors harmless against all claims, costs, damages, and expenses, and reasonable attorney fees arising out of, directly or indirectly, any claim of personal injury or death associated with such unintended or unauthorized use, even if such claim alleges that ON Semiconductor was negligent regarding the design or manufacture of the part. ON Semiconductor is an Equal Opportunity/Affirmative Action Employer. This literature is subject to all applicable copyright laws and is not for resale in any manner.

## PUBLICATION ORDERING INFORMATION

### LITERATURE FULFILLMENT:

Literature Distribution Center for ON Semiconductor  
19521 E. 32nd Pkwy, Aurora, Colorado 80011 USA  
**Phone:** 303-675-2175 or 800-344-3860 Toll Free USA/Canada  
**Fax:** 303-675-2176 or 800-344-3867 Toll Free USA/Canada  
**Email:** [orderlit@onsemi.com](mailto:orderlit@onsemi.com)

**N. American Technical Support:** 800-282-9855 Toll Free  
USA/Canada  
**Europe, Middle East and Africa Technical Support:**  
Phone: 421 33 790 2910  
**Japan Customer Focus Center**  
Phone: 81-3-5817-1050

**ON Semiconductor Website:** [www.onsemi.com](http://www.onsemi.com)

**Order Literature:** <http://www.onsemi.com/orderlit>

For additional information, please contact your local Sales Representative

# Mouser Electronics

Authorized Distributor

Click to View Pricing, Inventory, Delivery & Lifecycle Information:

[ON Semiconductor:](#)

[USB1T1105AMHX](#)



Компания «ЭлектроПласт» предлагает заключение долгосрочных отношений при поставках импортных электронных компонентов на взаимовыгодных условиях!

Наши преимущества:

- Оперативные поставки широкого спектра электронных компонентов отечественного и импортного производства напрямую от производителей и с крупнейших мировых складов;
- Поставка более 17-ти миллионов наименований электронных компонентов;
- Поставка сложных, дефицитных, либо снятых с производства позиций;
- Оперативные сроки поставки под заказ (от 5 рабочих дней);
- Экспресс доставка в любую точку России;
- Техническая поддержка проекта, помощь в подборе аналогов, поставка прототипов;
- Система менеджмента качества сертифицирована по Международному стандарту ISO 9001;
- Лицензия ФСБ на осуществление работ с использованием сведений, составляющих государственную тайну;
- Поставка специализированных компонентов (Xilinx, Altera, Analog Devices, Intersil, Interpoint, Microsemi, Aeroflex, Peregrine, Syfer, Eurofarad, Texas Instrument, Miteq, Cobham, E2V, MA-COM, Hittite, Mini-Circuits, General Dynamics и др.);

Помимо этого, одним из направлений компании «ЭлектроПласт» является направление «Источники питания». Мы предлагаем Вам помощь Конструкторского отдела:

- Подбор оптимального решения, техническое обоснование при выборе компонента;
- Подбор аналогов;
- Консультации по применению компонента;
- Поставка образцов и прототипов;
- Техническая поддержка проекта;
- Защита от снятия компонента с производства.



#### Как с нами связаться

**Телефон:** 8 (812) 309 58 32 (многоканальный)

**Факс:** 8 (812) 320-02-42

**Электронная почта:** [org@eplast1.ru](mailto:org@eplast1.ru)

**Адрес:** 198099, г. Санкт-Петербург, ул. Калинина, дом 2, корпус 4, литера А.