

General Description

The MAX14699 evaluation kit (EV kit) is a fully assembled and tested circuit board that demonstrates the MAX14699 high-accuracy, surge-protected overvoltage protector device. The EV kit comes with the MAX14699EWC+ installed.

Features

- 2.1V to 28V Operating Voltage Range
- $\overline{\text{ACOK}}$ LED Reading
- Proven PCB Layout
- Fully Assembled and Tested

EV Kit Contents

- EV Kit Board Containing a MAX14699

[Ordering Information](#) appears at end of data sheet.

Quick Start

Required Equipment

- MAX14699 EV kit
- 15V power supply
- Multimeter

Procedure

The EV kit is fully assembled and tested. Follow the steps below to verify board operation:

- 1) Connect 5V on IN. Verify OUT is 5V and LED1 is on.
- 2) Install shunt on JU1. The OUT voltage goes down.
- 3) Remove shunt on JU1. OUT is 5V.
- 4) Increase IN voltage. Verify OUT voltage follows IN voltage.
- 5) The switch turns off, OUT voltage goes down, and LED1 turns off when IN voltage goes up to about 13.75V.

Detailed Description

The MAX14699 EV kit is a fully assembled and tested circuit board demonstrating the MAX14699 high accuracy, surge protected overvoltage protector device in a 12-bump wafer-level package (WLP).

LED Indicator

The EV kit features LED1 that indicates $\overline{\text{ACOK}}$ is asserted.

Enable Pin

Use jumper JU1 and JU2 to set $\overline{\text{EN}}$ pin connection. ([Table 1](#))

OVLO

Use jumper JU3 to choose OVLO pin connection. ([Table 2](#))

Digital Voltage

Use jumper JU4 to power digital voltage from V_{IN} . ([Table 3](#))

Table 1. JU1, JU2 Jumper Setting

JUMPER	SHUNT POSITION	DESCRIPTION
JU1	Installed	\overline{EN} is pulled up.
	Not installed*	\overline{EN} is pulled down.
JU2	Installed	\overline{EN} is connected to TP8 (external control).
	Not installed*	\overline{EN} is not connected to TP8.

*Default position.

Table 2. JU3 Jumper Setting

JUMPER	SHUNT POSITION	DESCRIPTION
JU3	Installed*	OVLO is connected to ground. Internal OVLO threshold is used.
	Not installed	OVLO is connected to external resistor divider. Adjustable OVLO threshold is used.

*Default position.

Table 3. JU4 Jumper Setting

JUMPER	SHUNT POSITION	DESCRIPTION
JU4	Installed*	U2 is powered from V_{IN} .
	Not installed	U2 is not powered from V_{IN} . Please disconnect U2 from V_{IN} when testing high/surge voltage.

*Default position.

Ordering Information

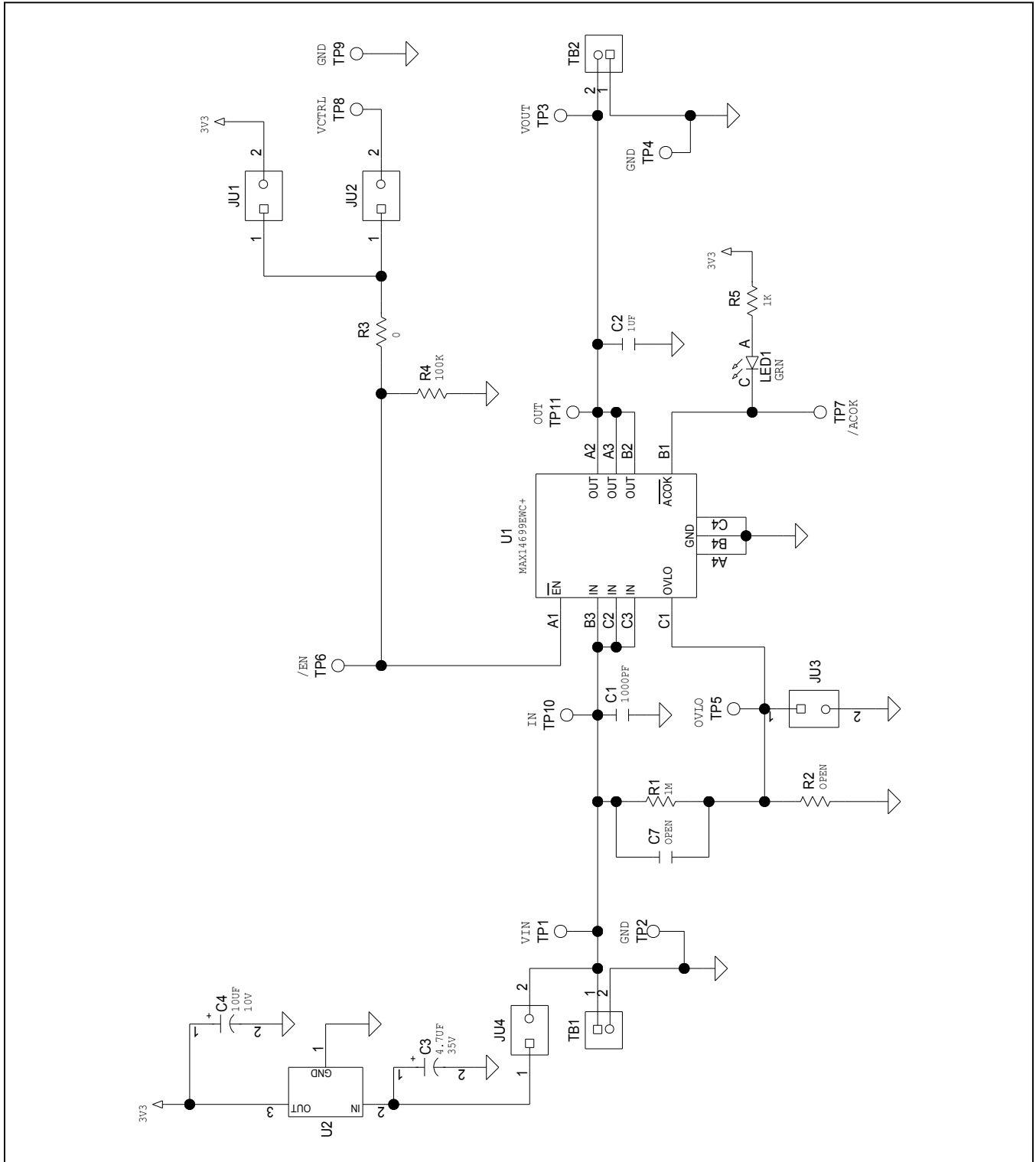
PART	TYPE
MAX14699EVKIT#	EVKIT

#Denotes RoHS compliant.

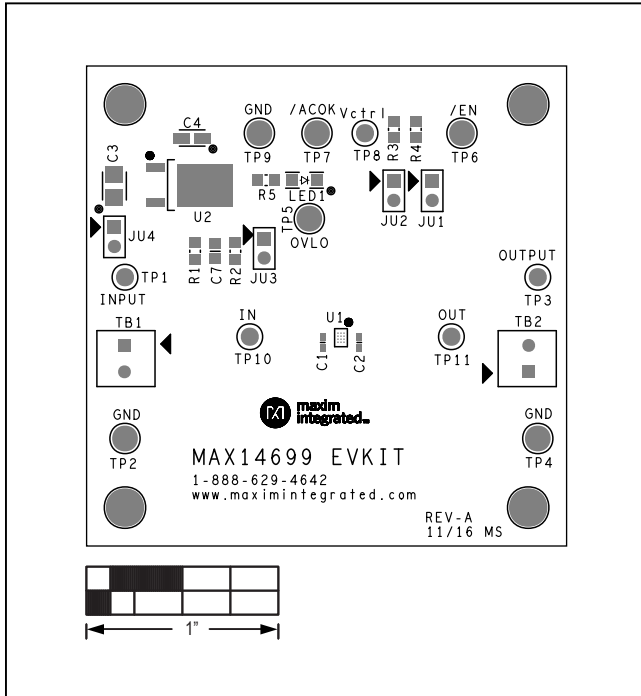
MAX14699 EV Kit Bill of Materials

ITEM	REF_DES	DN/DNP	QTY	MFG PART #	MANUFACTURER	VALUE	DESCRIPTION	COMMENTS
1	C1	-	1	06035C102KAT2A	AVX	1000PF	CAPACITOR; SMT (0603); CERAMIC CHIP; 1000PF; 50V; TOL=10%; TG=-55 DEGC TO +125 DEGC; TC=X7R	
2	C2	-	1	C0603C105K3PAC; GRM188R61E105KA12; 06033D105KAT2A	KEMET; MURATA; AVX	1UF	CAPACITOR; SMT (0603); CERAMIC CHIP; 1UF; 25V; TOL=10%; TG=-55 DEGC TO +85 DEGC;	
3	C3	-	1	TAJ475M035RNU	AVX	4.7UF	CAPACITOR; SMT (3528); TANTALUM CHIP; 4.7UF; 35V; TOL=20%; TG=-55 DEGC TO +125 DEGC; AUTO	
4	C4	-	1	TPSA106M010R0900; T491A106M010AT	AVX; KEMET	10UF	CAPACITOR; SMT (3216); TANTALUM CHIP; 10UF; 10V; TOL=20%	
5	JU1-JU4	-	4	68001-202HLF	FCI/CONNECT	68001-202HLF	CONNECTOR; MALE; THROUGH HOLE; BERGSTIK BREAKAWAY HEADER; STRAIGHT; 2PINS	
6	LED1	-	1	LG N971-KN-1	OSRAM	LG N971-KN-1	DIODE; LED; SMT (1206); PV=2.6V; IF=0.025A; -30 DEGC TO +85 DEGC; GREEN	
7	R1	-	1	RCRW08051M00FK; RC0805FR-071ML	VISHAY DALE/YAGEO PHICOMP	1M	RESISTOR; 0805; 1M; 1%; 100PPM; 0.125W; THICK FILM	
8	R3	-	1	RC0805JR-070RL	YAGEO/PHYCOMP	0	RESISTOR; 0805; 0 OHM; 5%; JUMPER; 0.125W; THICK FILM	
9	R4	-	1	RCRW0805100KFK; RK73H2ATTD1003; ERJ-6ENF1003V	VISHAY DALE/KOA SPEER/PANASONIC	100K	RESISTOR; 0805; 100K; 1%; 100PPM; 0.125W; THICK FILM	
10	R5	-	1	RCRW08051K00FK; ERJ-6ENF1001V; MCR10EZH1001; RC0805FR-071KL	VISHAY DALE; PANASONIC; ROHM; YAGEO	1K	RESISTOR; 0805; 1K; 1%; 100PPM; 0.125W; THICK FILM	
11	SU1-SU4	-	4	STC02SYAN	SULLINS ELECTRONICS CORP.	STC02SYAN	TEST POINT; JUMPER; STR; TOTAL LENGTH=0.256IN; BLACK; INSULATION=PBT CONTACT=PHOSPHOR BRONZE; COPPER PLATED TIN OVERALL	
12	TB1, TB2	-	2	393570002	MOLEX	393570002	CONNECTOR; FEMALE; THROUGH HOLE; 0.3MM PITCH BEAU EUROSTYLE FIXED MOUNT PCB TERMINAL BLOCK; RIGHT ANGLE; 2PINS	
13	TP1, TP3, TP8, TP10, TP11	-	5	5010	KEYSTONE	N/A	TESTPOINT WITH 1.80MM HOLE DIA, RED, MULTIPURPOSE;	
14	TP2, TP4, TP9	-	3	5011	KEYSTONE	N/A	TEST POINT; PIN DIA=0.125IN; TOTAL LENGTH=0.445IN; BOARD HOLE=0.063IN; BLACK;	
15	TP5-TP7	-	3	5013	KEYSTONE	N/A	PHOSPHOR BRONZE WIRE SILVER PLATE FINISH; TEST POINT; PIN DIA=0.125IN; TOTAL LENGTH=0.445IN; BOARD HOLE=0.063IN; ORANGE; PHOSPHOR BRONZE WIRE SILVER PLATE FINISH;	
16	U1	-	1	MAX14699EWC+	MAXIM	MAX14699EWC+	EVKIT PART-IC; PROT; HIGH ACCURACY; SURGE-PROTECTED OVERVOLTAGE PROTECTOR; WLP12 1.98X1.28	
17	U2	-	1	LD1086DT33	ST MICROELECTRONICS	LD1086DT33	IC; VREG; 1.5A FIXED LOW DROP POSITIVE VOLTAGE REGULATOR; DPAK	
18	C7	DNP	0	N/A	N/A	OPEN	PACKAGE OUTLINE 0805 NON-POLAR CAPACITOR	
19	R2	DNP	0	N/A	N/A	OPEN	PACKAGE OUTLINE 0805 RESISTOR	
20	PCB	-	1	MAX14699	MAXIM	PCB	PCB Board:MAX14699 EVALUATION KIT	
TOTAL			33					

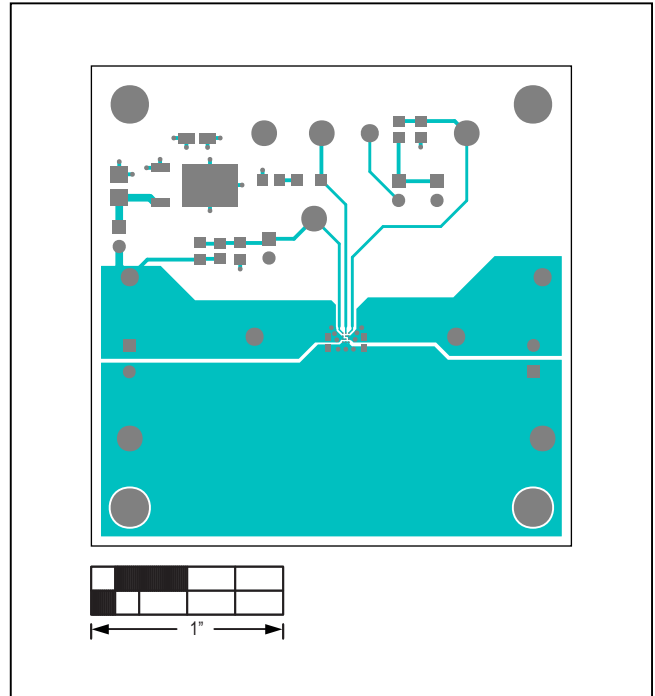
MAX14699 EV Kit Schematic



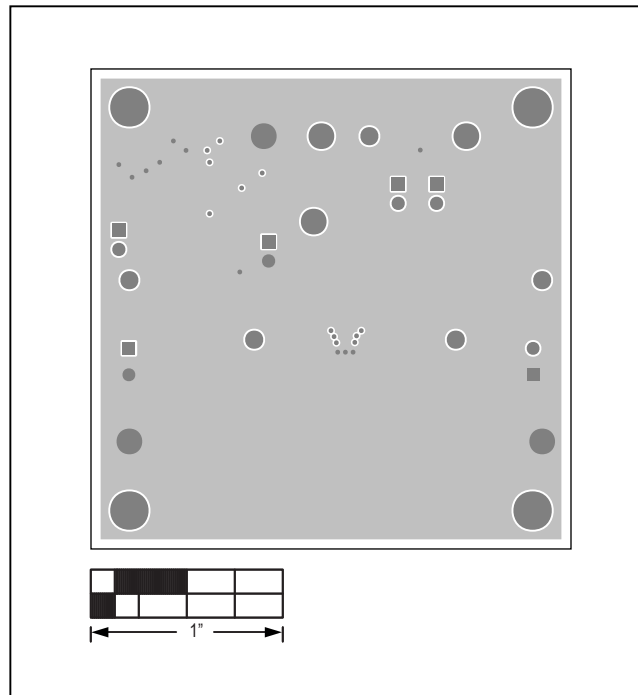
MAX14699 EV Kit PCB Layout Diagrams



MAX14699 EV Kit—Top Silkscreen

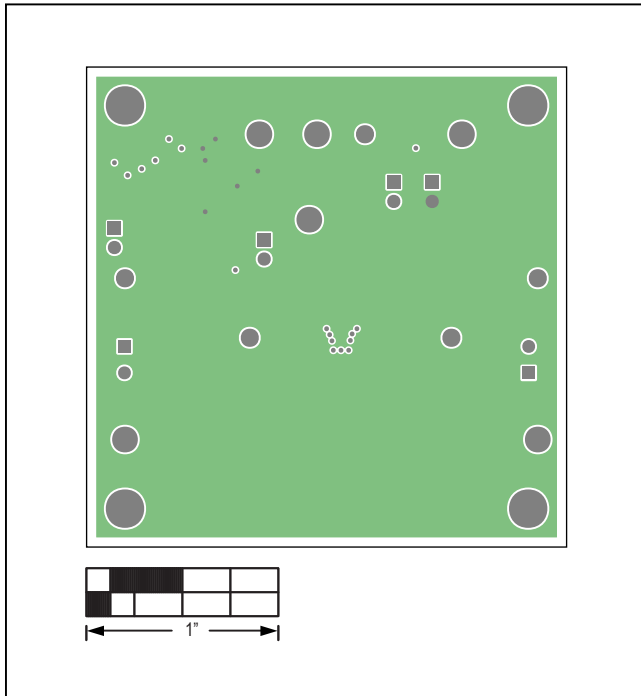


MAX14699 EV Kit—Top

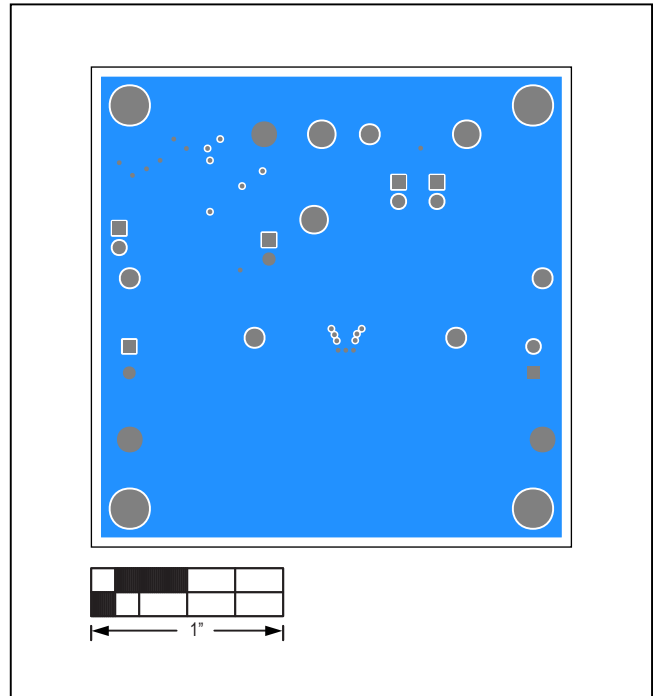


MAX14699 EV Kit—Layer 2 GND

MAX14699 EV Kit PCB Layout Diagrams (continued)



MAX14699 EV Kit—Layer 3 Power



MAX14699 EV Kit—Bottom

Revision History

REVISION NUMBER	REVISION DATE	DESCRIPTION	PAGES CHANGED
0	11/16	Initial release	—

For pricing, delivery, and ordering information, please contact Maxim Direct at 1-888-629-4642, or visit Maxim Integrated's website at www.maximintegrated.com.

Maxim Integrated cannot assume responsibility for use of any circuitry other than circuitry entirely embodied in a Maxim Integrated product. No circuit patent licenses are implied. Maxim Integrated reserves the right to change the circuitry and specifications without notice at any time.



Компания «ЭлектроПласт» предлагает заключение долгосрочных отношений при поставках импортных электронных компонентов на взаимовыгодных условиях!

Наши преимущества:

- Оперативные поставки широкого спектра электронных компонентов отечественного и импортного производства напрямую от производителей и с крупнейших мировых складов;
- Поставка более 17-ти миллионов наименований электронных компонентов;
- Поставка сложных, дефицитных, либо снятых с производства позиций;
- Оперативные сроки поставки под заказ (от 5 рабочих дней);
- Экспресс доставка в любую точку России;
- Техническая поддержка проекта, помощь в подборе аналогов, поставка прототипов;
- Система менеджмента качества сертифицирована по Международному стандарту ISO 9001;
- Лицензия ФСБ на осуществление работ с использованием сведений, составляющих государственную тайну;
- Поставка специализированных компонентов (Xilinx, Altera, Analog Devices, Intersil, Interpoint, Microsemi, Aeroflex, Peregrine, Syfer, Eurofarad, Texas Instrument, Miteq, Cobham, E2V, MA-COM, Hittite, Mini-Circuits, General Dynamics и др.);

Помимо этого, одним из направлений компании «ЭлектроПласт» является направление «Источники питания». Мы предлагаем Вам помощь Конструкторского отдела:

- Подбор оптимального решения, техническое обоснование при выборе компонента;
- Подбор аналогов;
- Консультации по применению компонента;
- Поставка образцов и прототипов;
- Техническая поддержка проекта;
- Защита от снятия компонента с производства.



Как с нами связаться

Телефон: 8 (812) 309 58 32 (многоканальный)

Факс: 8 (812) 320-02-42

Электронная почта: org@eplast1.ru

Адрес: 198099, г. Санкт-Петербург, ул. Калинина, дом 2, корпус 4, литера А.