

- Material:**
- Polyamide
 - Glass fiber reinforced

- Characteristics:**
- PG Thread
 - Metric Thread

| |
|--|
| Temperature Range PA -40 to 100°C (-40 to 212°F) |
|--|

| External thread | Internal thread | SW mm | Thread length mm | Cat. No. Light Grey | Std. Pk. |
|-----------------|-----------------|-------|------------------|---------------------|----------|
| Type B | | | | | |
| PG | | | | | |
| PG 11 | PG 7 | 22 | 8 | 7005302 | 100 |
| PG 13.5 | PG 7 | 24 | 9 | 7005304 | 100 |
| PG 13.5 | PG 9 | 24 | 9 | 7005305 | 100 |
| PG 16 | PG 9 | 27 | 10 | 7005307 | 100 |
| PG 16 | PG 11 | 27 | 10 | 7005308 | 100 |
| PG 21 | PG 11 | 32 | 11 | 7005310 | 100 |
| PG 21 | PG 13.5 | 32 | 11 | 7005311 | 100 |
| PG 21 | PG 16 | 32 | 11 | 7005312 | 100 |
| PG 29 | PG 13.5 | 40 | 11 | 7005313 | 50 |
| PG 29 | PG 16 | 40 | 11 | 7005314 | 50 |
| PG 29 | PG 21 | 40 | 11 | 7005315 | 50 |
| PG 36 | PG 16 | 50 | 13 | 7005316 | 50 |
| PG 36 | PG 21 | 50 | 13 | 7005317 | 50 |
| PG 36 | PG 29 | 50 | 18 | 7005318 | 50 |
| PG 42 | PG 21 | 55 | 18 | 7005319 | 25 |
| PG 42 | PG 29 | 55 | 18 | 7005320 | 25 |
| PG 42 | PG 36 | 55 | 18 | 7005321 | 25 |
| PG 48 | PG 29 | 60 | 18 | 7005322 | 25 |
| PG 48 | PG 36 | 60 | 14 | 7005323 | 25 |
| PG 48 | PG 42 | 60 | 17 | 7005324 | 25 |
| Type A | | | | | |
| PG 9 | PG 7 | 19 | 8 | 7005301 | 100 |
| PG 11 | PG 9 | 22 | 8 | 7005303 | 100 |
| PG 13.5 | PG 11 | 24 | 9 | 7005306 | 100 |
| PG 16 | PG 13.5 | 27 | 10 | 7005309 | 100 |



Type B



Type A

| External thread | Internal thread | SW mm | Thread length mm | Cat. No. Light Grey | Std. Pk. |
|-----------------|-----------------|-------|------------------|---------------------|----------|
| Metric | | | | | |
| M 16 x 1.5 | M 12 x 1.5 | 20 | 8 | 7008516 | 50 |
| M 20 x 1.5 | M 12 x 1.5 | 24 | 8 | 7008519 | 50 |
| M 20 x 1.5 | M 16 x 1.5 | 24 | 9 | 7008520 | 50 |
| M 25 x 1.5 | M 12 x 1.5 | 29 | 8 | 7008523 | 50 |
| M 25 x 1.5 | M 16 x 1.5 | 29 | 8 | 7008524 | 50 |
| M 25 x 1.5 | M 20 x 1.5 | 30 | 10 | 7008525 | 20 |
| M 32 x 1.5 | M 16 x 1.5 | 36 | 10 | 7008530 | 50 |
| M 32 x 1.5 | M 20 x 1.5 | 36 | 10 | 7008531 | 50 |
| M 32 x 1.5 | M 25 x 1.5 | 36 | 11 | 7008532 | 20 |
| M 40 x 1.5 | M 20 x 1.5 | 46 | 10 | 7008538 | 50 |
| M 40 x 1.5 | M 25 x 1.5 | 46 | 10 | 7008539 | 20 |
| M 40 x 1.5 | M 32 x 1.5 | 44 | 12 | 7008540 | 20 |
| M 50 x 1.5 | M 25 x 1.5 | 55 | 12 | 7008548 | 20 |
| M 50 x 1.5 | M 32 x 1.5 | 55 | 12 | 7008549 | 20 |
| M 50 x 1.5 | M 40 x 1.5 | 55 | 13 | 7008550 | 10 |
| M 63 x 1.5 | M 32 x 1.5 | 68 | 12 | 7008561 | 20 |
| M 63 x 1.5 | M 40 x 1.5 | 68 | 12 | 7008562 | 20 |
| M 63 x 1.5 | M 50 x 1.5 | 70 | 15 | 7008563 | 5 |



Reducer / Nickel-Plated Brass

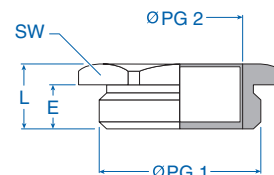
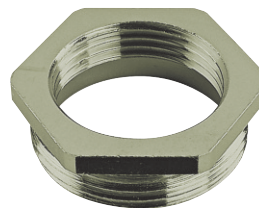
Material:

- Nickel-plated brass

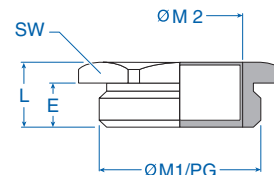
Characteristics:

- PG thread
- Metric thread
- Hexagon

| External thread | Internal thread | SW mm | Thread length mm (E) | Complete length mm (L) | Cat. No. | Std. Pk. |
|-----------------|-----------------|-------|----------------------|------------------------|----------|----------|
| PG 1 | PG 2 | | | | | |
| PG 9 | PG 7 | 17 | 5 | 8 | 6102018 | 100 |
| PG 11 | PG 9 | 19 | 6 | 9 | 6102034 | 100 |
| PG 11 | PG 7 | 19 | 6 | 9 | 6102030 | 100 |
| PG 13.5 | PG 11 | 21 | 6 | 9 | 6102077 | 100 |
| PG 13.5 | PG 9 | 21 | 6 | 9 | 6102042 | 100 |
| PG 13.5 | PG 7 | 21 | 6 | 8.5 | 6102026 | 100 |
| PG 16 | PG 13.5 | 23 | 6 | 9 | 6102115 | 100 |
| PG 16 | PG 11 | 23 | 6 | 9 | 6102085 | 100 |
| PG 16 | PG 9 | 23 | 6 | 9 | 6102050 | 100 |
| PG 21 | PG 7 | 24 | 7 | 10 | 6102158 | 100 |
| PG 21 | PG 13.5 | 29 | 7 | 10 | 6102123 | 50 |
| PG 21 | PG 11 | 29 | 7 | 10 | 6102093 | 20 |
| PG 21 | PG 9 | 29 | 7 | 10 | 6102069 | 50 |
| PG 29 | PG 21 | 39 | 8 | 11 | 6102190 | 25 |
| PG 29 | PG 16 | 39 | 8 | 11 | 6102166 | 25 |
| PG 29 | PG 13.5 | 39 | 8 | 11 | 6102131 | 25 |
| PG 29 | PG 11 | 39 | 8 | 11 | 6102107 | 25 |
| PG 36 | PG 29 | 50 | 8 | 11 | 6102220 | 25 |
| PG 36 | PG 21 | 50 | 8 | 11 | 6102204 | 25 |
| PG 36 | PG 13.5 | 50 | 8 | 11 | 6102140 | 25 |
| PG 42 | PG 36 | 64 | 10 | 14 | 6102241 | 25 |
| PG 42 | PG 29 | 64 | 10 | 14 | 6102239 | 25 |
| PG 48 | PG 42 | 64 | 10 | 14 | 6102258 | 25 |
| PG 48 | PG 36 | 64 | 10 | 14 | 6102255 | 25 |
| PG 48 | PG 29 | 64 | 10 | 14 | 6102247 | 25 |
| PG 48 | PG 21 | 64 | 10 | 14 | 6102212 | 25 |
| PG 48 | PG 16 | 64 | 10 | 14 | 6102182 | 25 |



| Metric 1 | Metric 2 | | | | | |
|-----------------|-----------------|----|------|------|---------|----|
| M 16 x 1.5 | M 12 x 1.5 | 20 | 7 | 10 | 6102400 | 50 |
| M 20 x 1.5 | M 12 x 1.5 | 24 | 7 | 10 | 6102404 | 50 |
| M 20 x 1.5 | M 16 x 1.5 | 24 | 7 | 10 | 6102405 | 50 |
| M 25 x 1.5 | M 16 x 1.5 | 30 | 8 | 11.5 | 6102409 | 20 |
| M 25 x 1.5 | M 20 x 1.5 | 30 | 8 | 11.5 | 6102410 | 20 |
| M 32 x 1.5 | M 16 x 1.5 | 36 | 8.5 | 12.5 | 6102414 | 20 |
| M 32 x 1.5 | M 20 x 1.5 | 36 | 8.5 | 12.5 | 6102413 | 20 |
| M 32 x 1.5 | M 25 x 1.5 | 36 | 8.5 | 12.5 | 6102415 | 20 |
| M 40 x 1.5 | M 25 x 1.5 | 42 | 8.5 | 12.5 | 6102419 | 10 |
| M 40 x 1.5 | M 32 x 1.5 | 42 | 8.5 | 12.5 | 6102420 | 10 |
| M 50 x 1.5 | M 32 x 1.5 | 55 | 9.5 | 14.5 | 6102424 | 10 |
| M 50 x 1.5 | M 40 x 1.5 | 55 | 9.5 | 14.5 | 6102425 | 5 |
| M 63 x 1.5 | M 40 x 1.5 | 70 | 10.5 | 17.5 | 6102429 | 1 |
| M 63 x 1.5 | M 50 x 1.5 | 70 | 10.5 | 17.5 | 6102430 | 1 |
| M 75 x 1.5 | M 63 x 1.5 | 80 | 11.5 | 19.5 | 6102435 | 1 |



Reducer, Ribbed, Nickel-Plated Brass

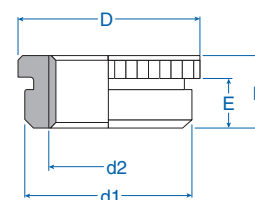
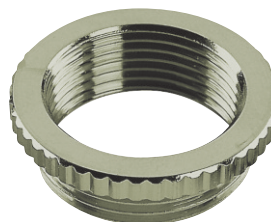
Material:

- Nickel-plated brass

Characteristics:

- PG/Metric external thread
- PG/Metric internal thread
- Round ribbed

| External thread (d1) | Internal thread (d2) | Diameter mm (D) | Thread length mm (E) | Complete length mm (L) | Cat. No. | Std. Pk. |
|----------------------|----------------------|-----------------|----------------------|------------------------|----------|----------|
| Metric | PG | | | | | |
| M 16 x 1.5 | PG 7 | 20 | 6 | 9 | 6104716 | 100 |
| M 20 x 1.5 | PG 9 | 24 | 6.5 | 9.5 | 6104720 | 50 |
| M 25 x 1.5 | PG 11 | 30 | 7 | 10 | 6104725 | 50 |
| M 25 x 1.5 | PG 13.5 | 30 | 7 | 10 | 6104726 | 50 |
| M 25 x 1.5 | PG 16 | 30 | 7 | 10 | 6104727 | 50 |
| M 32 x 1.5 | PG 16 | 34 | 8 | 11.5 | 6104732 | 20 |
| M 32 x 1.5 | PG 21 | 34 | 8 | 11.5 | 6104733 | 20 |
| M 40 x 1.5 | PG 21 | 50 | 9 | 12 | 6104740 | 10 |
| M 50 x 1.5 | PG 29 | 57 | 9 | 12 | 6104750 | 5 |
| M 63 x 1.5 | PG 36 | 70 | 10.5 | 14.5 | 6104763 | 1 |
| M 63 x 1.5 | PG 42 | 70 | 10.5 | 14.5 | 6104764 | 1 |



Material:

- Polyamide glass fiber reinforced

Characteristics:

- PG/Metric external thread
- PG/Metric internal thread

Temperature Range PA

-30 to 100°C (-22 to 212°F)

| External thread | Internal thread | SW mm | Thread length mm | Complete length mm | Cat. No. Light Gray | Std. Pk. |
|-----------------|-----------------|-------|------------------|--------------------|---------------------|----------|
| PG | | | | | | |
| PG 7 | PG 9 | 19 | 7 | 20 | 7004200 | 100 |
| PG 9 | PG 11 | 22 | 8 | 23 | 7004201 | 100 |
| PG 11 | PG 13.5 | 24 | 8 | 23 | 7004202 | 100 |
| PG 13.5 | PG 16 | 27 | 9 | 26 | 7004203 | 100 |
| PG 16 | PG 21 | 32 | 9 | 29 | 7004204 | 100 |
| PG 21 | PG 29 | 42 | 10 | 32 | 7004205 | 50 |
| PG 29 | PG 36 | 53 | 11 | 35.5 | 7004206 | 25 |
| PG 36 | PG 42 | 60 | 13 | 40.5 | 7004207 | 10 |
| PG 42 | PG 48 | 65 | 13 | 41 | 7004208 | 10 |
| Metric | | | | | | |
| M12 x 1.5 | M16 x 1.5 | 20 | 8 | 18.5 | 7004300 | 50 |
| M16 x 1.5 | M20 x 1.5 | 24 | 8 | 20 | 7004301 | 50 |
| M20 x 1.5 | M25 x 1.5 | 30 | 9 | 22 | 7004302 | 50 |
| M25 x 1.5 | M32 x 1.5 | 36 | 10 | 24 | 7004303 | 20 |
| M32 x 1.5 | M40 x 1.5 | 44 | 11 | 26 | 7004304 | 20 |
| M40 x 1.5 | M50 x 1.5 | 55 | 12 | 28 | 7004305 | 20 |
| M50 x 1.5 | M63 x 1.5 | 70 | 13 | 31.5 | 7004306 | 10 |



Enlarger / Nickel-Plated Brass

Material:

- Nickel-plated brass

Characteristics:

- PG external thread
- PG internal thread
- Round

According to DIN 259 and formerly by DIN 46320

| External thread | Internal thread | Diameter mm (D) | Thread length mm (E) | Complete length mm (L) | Cat. No. | Std. Pk. |
|-----------------|-----------------|-----------------|----------------------|------------------------|----------|----------|
| PG 1 | PG 2 | | | | | |
| PG 7 | PG 9 | 17 | 5 | 15 | 6200010 | 50 |
| PG 9 | PG 11 | 20 | 6 | 16.5 | 6200028 | 50 |
| PG 9 | PG 13.5 | 22 | 6 | 17.5 | 6200036 | 50 |
| PG 11 | PG 13.5 | 22 | 6 | 17.5 | 6200044 | 50 |
| PG 11 | PG 16 | 24 | 6 | 18.5 | 6200052 | 25 |
| PG 13.5 | PG 16 | 24 | 6.5 | 19 | 6200060 | 25 |
| PG 13.5 | PG 21 | 30 | 6.5 | 21 | 6200079 | 20 |
| PG 16 | PG 21 | 30 | 6.5 | 21 | 6200087 | 20 |
| PG 21 | PG 29 | 39 | 7 | 23 | 6200095 | 15 |
| PG 29 | PG 36 | 50 | 8 | 28 | 6200109 | 10 |
| PG 36 | PG 42 | 57 | 9 | 31 | 6200117 | 10 |
| PG 42 | PG 48 | 64 | 10 | 33 | 6200125 | 10 |



Material:

- Nickel-plated brass

Characteristics:

- Metric external thread
- Metric internal thread
- Round

| External thread | Internal thread | Diameter mm (D) | Thread length mm (E) | Complete length mm (L) | Cat. No. | Std. Pk. |
|-----------------|-----------------|-----------------|----------------------|------------------------|----------|----------|
| Metric 1 | Metric 2 | | | | | |
| M 12 x 1.5 | M 16 x 1.5 | 18 | 5 | 15 | 6200212 | 50 |
| M 16 x 1.5 | M 20 x 1.5 | 22 | 6 | 17.5 | 6200216 | 50 |
| M 20 x 1.5 | M 25 x 1.5 | 27 | 6.5 | 19 | 6200220 | 50 |
| M 25 x 1.5 | M 32 x 1.5 | 34 | 8 | 20.5 | 6200225 | 20 |
| M 32 x 1.5 | M 40 x 1.5 | 42 | 7 | 23 | 6200232 | 20 |
| M 40 x 1.5 | M 50 x 1.5 | 53 | 9 | 31 | 6200240 | 10 |
| M 50 x 1.5 | M 63 x 1.5 | 65 | 9.5 | 24 | 6200250 | 5 |
| M 63 x 1.5 | M 75 x 1.5 | 80 | 10.5 | 26 | 6200263 | 1 |



Material:

- Nickel-plated brass

Characteristics:

- Metric external thread
- Metric internal thread
- Hexagon

| External thread | Internal thread | SW mm | Thread length mm (E) | Complete length mm (L) | Cat. No. | Std. Pk. |
|-----------------|-----------------|-------|----------------------|------------------------|----------|----------|
| Metric 1 | Metric 2 | | | | | |
| M12 x 1.5 | M16 x 1.5 | 19 | 7 | 19 | 6200312 | 50 |
| M16 x 1.5 | M20 x 1.5 | 22 | 7 | 19 | 6200316 | 50 |
| M20 x 1.5 | M25 x 1.5 | 28 | 7 | 20 | 6200320 | 50 |
| M25 x 1.5 | M32 x 1.5 | 36 | 8 | 21.5 | 6200325 | 20 |
| M32 x 1.5 | M40 x 1.5 | 42 | 8.5 | 22 | 6200332 | 20 |
| M40 x 1.5 | M50 x 1.5 | 52 | 8.5 | 23 | 6200340 | 10 |
| M50 x 1.5 | M63 x 1.5 | 65 | 9.5 | 25 | 6200350 | 5 |
| M63 x 1.5 | M75 x 1.5 | 80 | 10.5 | 27.5 | 6200363 | 1 |



Material:
 • Nickel-plated brass

Characteristics:
 • PG external thread
 • Metric internal thread
 • Hexagon

| External thread | Internal thread | SW mm | Thread length mm | Complete length mm | Cat. No. | Std. Pk. |
|-----------------|-----------------|-------|------------------|--------------------|----------|----------|
| Form A | | | | | | |
| PG | Metric | | | | | |
| PG 7 | M 12 x 1.5 | 17 | 6.5 | 16.5 | 6604807 | 50 |
| PG 7 | M 16 x 1.5 | 19 | 6.5 | 16.5 | 6604808 | 50 |
| PG 9 | M 16 x 1.5 | 19 | 6.5 | 16.5 | 6604810 | 50 |
| PG 9 | M 20 x 1.5 | 22 | 6.5 | 18.5 | 6604811 | 50 |
| PG 11 | M 20 x 1.5 | 22 | 7 | 17 | 6604813 | 50 |
| PG 11 | M 25 x 1.5 | 27 | 7 | 18 | 6604814 | 50 |
| PG 13.5 | M 20 x 1.5 | 24 | 7 | 17 | 6604816 | 50 |
| PG 13.5 | M 25 x 1.5 | 27 | 7 | 18 | 6604817 | 50 |
| PG 16 | M 20 x 1.5 | 27 | 7 | 16 | 6604818 | 50 |
| PG 16 | M 25 x 1.5 | 27 | 7 | 18 | 6604819 | 50 |
| PG 16 | M 32 x 1.5 | 36 | 7 | 18.5 | 6604820 | 50 |
| PG 21 | M 32 x 1.5 | 36 | 8 | 19.5 | 6604822 | 20 |
| PG 21 | M 40 x 1.5 | 42 | 8 | 19.5 | 6604823 | 20 |
| PG 29 | M 40 x 1.5 | 42 | 8.5 | 20 | 6604831 | 20 |
| PG 29 | M 50 x 1.5 | 55 | 8.5 | 21 | 6604832 | 20 |
| PG 36 | M 50 x 1.5 | 55 | 8.5 | 21 | 6604837 | 10 |
| PG 42 | M 63 x 1.5 | 65 | 10 | 23.5 | 6604843 | 5 |
| PG 48 | M 63 x 1.5 | 65 | 10 | 24.5 | 6604849 | 5 |
| PG 48 | M 75 x 1.5 | 80 | 10 | 24.5 | 6604850 | 5 |
| Form B | | | | | | |
| PG 9 | M 12 x 1.5 | 19 | 6.5 | 10 | 6604809 | 50 |
| PG 11 | M 16 x 1.5 | 22 | 7 | 11 | 6604812 | 50 |
| PG 13.5 | M 16 x 1.5 | 24 | 7 | 11 | 6604815 | 50 |
| PG 21 | M 25 x 1.5 | 32 | 8 | 13 | 6604821 | 20 |
| PG 29 | M 25 x 1.5 | 40 | 8.5 | 14 | 6604829 | 20 |
| PG 29 | M 32 x 1.5 | 40 | 8.5 | 14 | 6604830 | 20 |
| PG 36 | M 40 x 1.5 | 55 | 8.5 | 15 | 6604836 | 10 |
| PG 42 | M 50 x 1.5 | 58 | 10 | 16.5 | 6604842 | 5 |
| PG 48 | M 50 x 1.5 | 65 | 10 | 17 | 6604848 | 5 |



Form A



Form B

Adapter / Nickel-Plated Brass

Material:

- Nickel-plated brass
- O-ring: Nitril

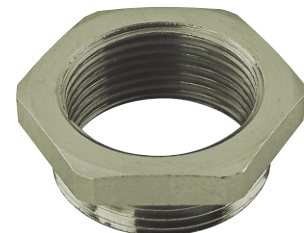
Characteristics:

- Metric external thread
- PG internal thread
- Hexagon

| External thread | Internal thread | SW mm | Thread length mm | Complete length mm | Cat. No. | Std. Pk. |
|-----------------|-----------------|-------|------------------|--------------------|----------|----------|
| Form A | | | | | | |
| Metric | | | | | | |
| M 12 x 1.5 | PG 7 | 14 | 7 | 17 | 6604712 | 100 |
| M 16 x 1.5 | PG 9 | 18 | 7 | 17.5 | 6604716 | 50 |
| M 16 x 1.5 | PG 11 | 20 | 7 | 18 | 6604715 | 50 |
| M 16 x 1.5 | PG 13.5 | 22 | 7 | 19.5 | 6604709 | 50 |
| M 16 x 1.5 | PG 16 | 24 | 7 | 21.5 | 6604717 | 50 |
| M 20 x 1.5 | PG 11 | 22 | 7 | 18 | 6604720 | 50 |
| M 20 x 1.5 | PG 13.5 | 22 | 7 | 19.5 | 6604721 | 50 |
| M 20 x 1.5 | PG 16 | 24 | 7 | 20.5 | 6604722 | 50 |
| M 20 x 1.5 | PG 21 | 32 | 7 | 22.5 | 6604708 | 50 |
| M 25 x 1.5 | PG 16 | 27 | 8 | 21.5 | 6604726 | 50 |
| M 25 x 1.5 | PG 21 | 32 | 8 | 23.0 | 6604725 | 50 |
| M 25 x 1.5 | PG 29 | 40 | 8 | 25 | 6604727 | 20 |
| M 32 x 1.5 | PG 21 | 34 | 8.5 | 23.5 | 6604729 | 20 |
| M 32 x 1.5 | PG 29 | 40 | 8.5 | 25.0 | 6604732 | 10 |
| M 40 x 1.5 | PG 29 | 42 | 8.5 | 25 | 6604734 | 10 |
| M 40 x 1.5 | PG 36 | 50 | 8.5 | 28.0 | 6604740 | 10 |
| M 50 x 1.5 | PG 36 | 52 | 9.5 | 29 | 6604742 | 10 |
| M 50 x 1.5 | PG 42 | 58 | 9.5 | 31.5 | 6604750 | 5 |
| M 63 x 1.5 | PG 42 | 65 | 10.5 | 32.5 | 6604752 | 1 |
| M 63 x 1.5 | PG 48 | 65 | 10.5 | 32.5 | 6604763 | 1 |
| M 75 x 1.5 | PG 48 | 80 | 11.5 | 34.5 | 6604764 | 1 |
| Form B | | | | | | |
| M 16 x 1.5 | PG 7 | 18 | 7 | 10.5 | 6604713 | 100 |
| M 20 x 1.5 | PG 9 | 22 | 7 | 11 | 6604719 | 50 |
| M 25 x 1.5 | PG 9 | 27 | 8 | 12 | 6604707 | 50 |
| M 25 x 1.5 | PG 11 | 27 | 8 | 12 | 6604723 | 50 |
| M 25 x 1.5 | PG 13.5 | 27 | 8 | 12 | 6604724 | 50 |
| M 32 x 1.5 | PG 13.5 | 34 | 8.5 | 12.5 | 6604706 | 20 |
| M 32 x 1.5 | PG 16 | 34 | 8.5 | 12.5 | 6604728 | 20 |
| M 32 x 1.5 | PG 21 | 34 | 8.5 | 12.5 | 6604730 | 20 |
| M 40 x 1.5 | PG 16 | 42 | 8.5 | 13.5 | 6604705 | 10 |
| M 40 x 1.5 | PG 21 | 42 | 8.5 | 13.5 | 6604733 | 10 |
| M 40 x 1.5 | PG 29 | 42 | 8.5 | 13.5 | 6604735 | 20 |
| M 50 x 1.5 | PG 21 | 52 | 9.5 | 15.5 | 6604704 | 10 |
| M 50 x 1.5 | PG 29 | 52 | 9.5 | 15.5 | 6604741 | 10 |
| M 50 x 1.5 | PG 36 | 52 | 9.5 | 15.5 | 6604743 | 10 |
| M 63 x 1.5 | PG 29 | 65 | 10.5 | 17.5 | 6604703 | 5 |
| M 63 x 1.5 | PG 36 | 65 | 10.5 | 17.5 | 6604751 | 5 |
| M 63 x 1.5 | PG 42 | 65 | 10.5 | 17.5 | 6604753 | 5 |



Form A



Form B

Material:

- Nickel-Plated Brass

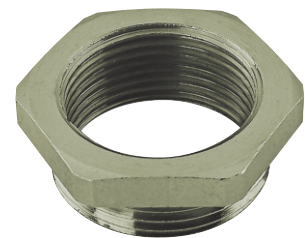
Characteristics:

- PG/Metric external thread
- NPT internal thread
- Hexagon

| External thread | Internal thread | SW mm | Thread length mm | Complete length mm | Cat. No. | Std. Pk. |
|----------------------|-----------------|-------|------------------|--------------------|----------|----------|
| PG Form A | | | | | | |
| PG 7 | NPT 3/8" | 19 | 5 | 19.5 | 6400400 | 50 |
| PG 9 | NPT 1/2" | 24 | 6 | 24 | 6400401 | 50 |
| PG 11 | NPT 1/2" | 24 | 6 | 24 | 6400402 | 50 |
| PG 13.5 | NPT 1/2" | 24 | 6.5 | 24.5 | 6400403 | 50 |
| PG 13.5 | NPT 3/4" | 30 | 6.5 | 25 | 6400404 | 50 |
| PG 16 | NPT 1/2" | 24 | 6.5 | 24.5 | 6400405 | 50 |
| PG 16 | NPT 3/4" | 30 | 6.5 | 25 | 6400406 | 50 |
| PG 21 | NPT 3/4" | 30 | 7 | 23 | 6400407 | 20 |
| PG 21 | NPT 1" | 36 | 7 | 30 | 6400408 | 20 |
| PG 29 | NPT 1 1/4" | 50 | 8 | 32 | 6400410 | 20 |
| PG 36 | NPT 1 1/2" | 55 | 9 | 34 | 6400412 | 10 |
| PG 48 | NPT 2" | 64 | 10 | 35 | 6400415 | 5 |
| Form B | | | | | | |
| PG 29 | NPT 1" | 40 | 8 | 18 | 6400409 | 20 |
| PG 36 | NPT 1 1/4" | 50 | 9 | 18.5 | 6400411 | 10 |
| PG 42 | NPT 1 1/2" | 60 | 10 | 19.5 | 6400413 | 5 |
| PG 48 | NPT 1 1/2" | 64 | 10 | 19.5 | 6400414 | 5 |
| Metric Form A | | | | | | |
| M16 x 1.5 | NPT 3/8" | 19 | 7 | 21.5 | 6402316 | 50 |
| M16 x 1.5 | NPT 1/2" | 24 | 7 | 25 | 6402317 | 50 |
| M20 x 1.5 | NPT 1/2" | 24 | 7 | 25 | 6402321 | 50 |
| M25 x 1.5 | NPT 3/4" | 30 | 8 | 27 | 6402326 | 20 |
| M32 x 1.5 | NPT 1" | 36 | 8.5 | 31 | 6402333 | 10 |
| Form B | | | | | | |
| M20 x 1.5 | NPT 3/8" | 24 | 7 | 13 | 6402320 | 50 |
| M25 x 1.5 | NPT 1/2" | 30 | 8 | 15 | 6402325 | 20 |
| M32 x 1.5 | NPT 3/4" | 36 | 8.5 | 15.5 | 6402332 | 10 |



Form A



Form B

Adapter / Nickel-Plated Brass

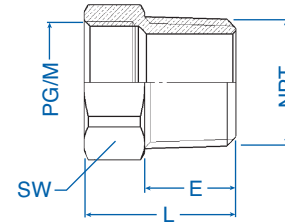
Material:

- Nickel-plated brass

Characteristics:

- NPT external thread
- PG or M internal thread
- Hexagon

| External Thread | Internal Thread | SW mm | Thread Length mm (E) | Complete Length mm (L) | Cat. No. | Std. Pk. |
|-----------------|-----------------|-------|----------------------|------------------------|----------------|----------|
| NPT | PG | | | | | |
| 3/8" | PG 7 | 19.0 | 15.0 | 20.0 | 6402020 | 50 |
| 1/2" | PG 9 | 22.0 | 20.0 | 25.0 | 6402038 | 50 |
| 1/2" | PG 11 | 22.0 | 20.0 | 28.0 | 6402046 | 50 |
| 1/2" | PG 13.5 | 24.0 | 20.0 | 30.0 | 6402054 | 50 |
| 1/2" | PG 16 | 24.0 | 20.0 | 30.0 | 6402055 | 50 |
| 3/4" | PG 11 | 29.0 | 20.0 | 30.0 | 6402060 | 50 |
| 3/4" | PG 13.5 | 29.0 | 20.0 | 30.0 | 6402062 | 50 |
| 3/4" | PG 16 | 29.0 | 20.0 | 30.0 | 6402070 | 50 |
| 3/4" | PG 21 | 32.0 | 20.0 | 32.0 | 6402072 | 50 |
| 1" | PG 16 | 36.0 | 25.0 | 35.0 | 6402087 | 20 |
| 1" | PG 21 | 36.0 | 25.0 | 35.0 | 6402089 | 20 |
| 1" | PG 29 | 42.0 | 25.0 | 38.0 | 6402091 | 20 |
| 1 1/4" | PG 29 | 46.0 | 25.0 | 35.0 | 6402097 | 20 |
| 1 1/4" | PG 36 | 50.0 | 25.0 | 42.0 | 6402099 | 10 |
| 1 1/2" | PG 36 | 52.0 | 26.0 | 42.0 | 6402100 | 10 |
| 1 1/2" | PG 48 | 65.0 | 26.0 | 49.0 | 6402102 | 5 |
| 2" | PG 48 | 65.0 | 27.0 | 50.0 | 6402119 | 5 |
| NPT | Metric | | | | | |
| 3/8" | M 20 | 23.0 | 15.0 | 26.0 | 6402214 | 50 |
| 3/8" | M 25 | 28.0 | 15.0 | 27.0 | 6402215 | 50 |
| 1/2" | M 20 | 23.0 | 20.0 | 30.0 | 6402216 | 50 |
| 1/2" | M 25 | 28.0 | 20.0 | 32.0 | 6402217 | 50 |
| 1" | M 20 | 36.0 | 25.0 | 31.0 | 6402218 | 20 |
| 1" | M 25 | 36.0 | 25.0 | 31.0 | 6402219 | 20 |





Компания «ЭлектроПласт» предлагает заключение долгосрочных отношений при поставках импортных электронных компонентов на взаимовыгодных условиях!

Наши преимущества:

- Оперативные поставки широкого спектра электронных компонентов отечественного и импортного производства напрямую от производителей и с крупнейших мировых складов;
- Поставка более 17-ти миллионов наименований электронных компонентов;
- Поставка сложных, дефицитных, либо снятых с производства позиций;
- Оперативные сроки поставки под заказ (от 5 рабочих дней);
- Экспресс доставка в любую точку России;
- Техническая поддержка проекта, помощь в подборе аналогов, поставка прототипов;
- Система менеджмента качества сертифицирована по Международному стандарту ISO 9001;
- Лицензия ФСБ на осуществление работ с использованием сведений, составляющих государственную тайну;
- Поставка специализированных компонентов (Xilinx, Altera, Analog Devices, Intersil, Interpoint, Microsemi, Aeroflex, Peregrine, Syfer, Eurofarad, Texas Instrument, Miteq, Cobham, E2V, MA-COM, Hittite, Mini-Circuits, General Dynamics и др.);

Помимо этого, одним из направлений компании «ЭлектроПласт» является направление «Источники питания». Мы предлагаем Вам помощь Конструкторского отдела:

- Подбор оптимального решения, техническое обоснование при выборе компонента;
- Подбор аналогов;
- Консультации по применению компонента;
- Поставка образцов и прототипов;
- Техническая поддержка проекта;
- Защита от снятия компонента с производства.



Как с нами связаться

Телефон: 8 (812) 309 58 32 (многоканальный)

Факс: 8 (812) 320-02-42

Электронная почта: org@eplast1.ru

Адрес: 198099, г. Санкт-Петербург, ул. Калинина, дом 2, корпус 4, литера А.