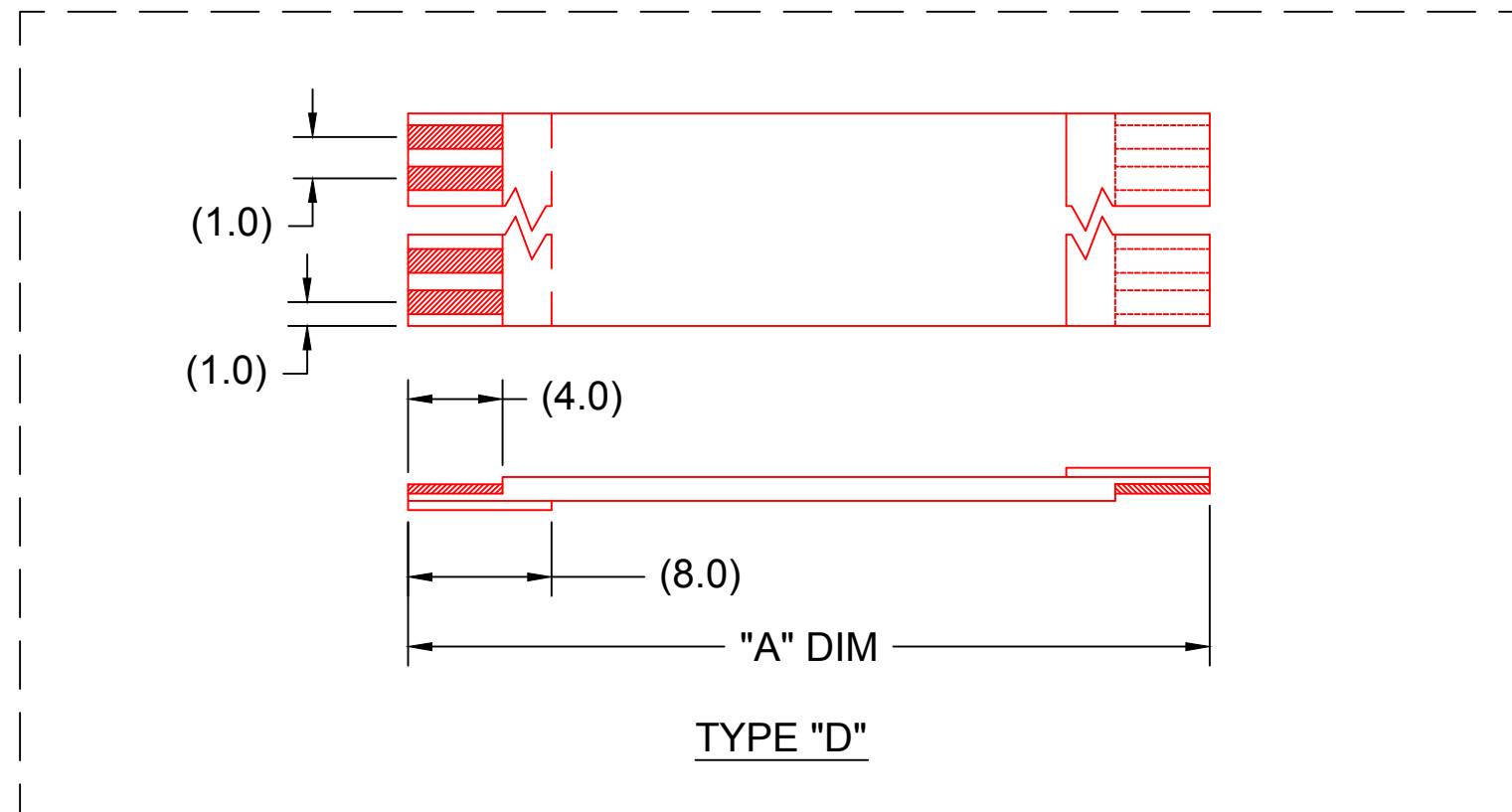
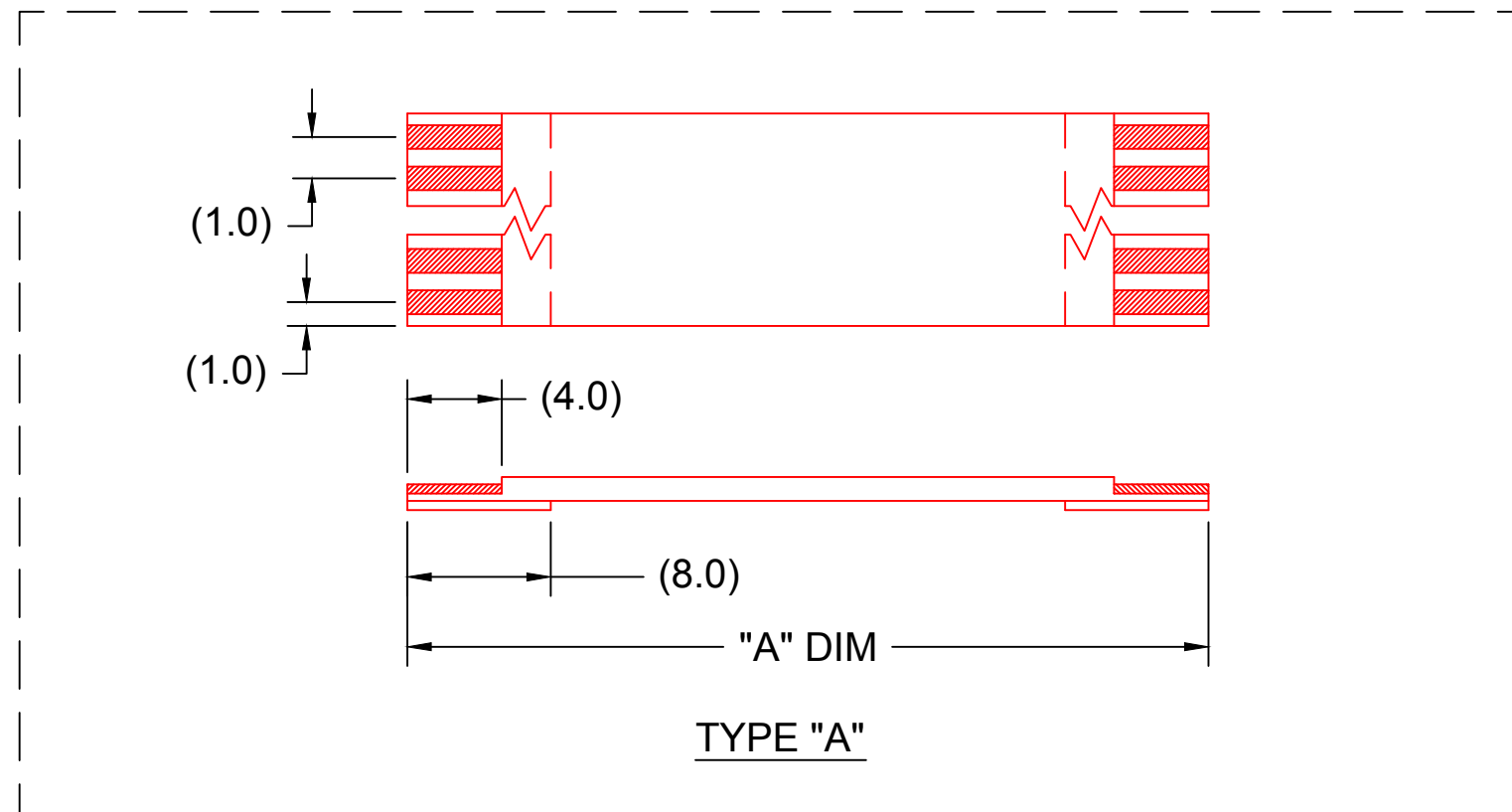


1.00MM CENTER FFC JUMPER CABLE (HIGH TEMPERATURE) CHART

"A" DIM.	1.18 ± .079 INCHES 30 ± 2.00		2 ± .079 INCHES 51 ± 2.00 MM		3 ± .118 INCHES 76 ± 3.00 MM		4 ± .118 INCHES 102 ± 3.00 MM		5 ± .157 INCHES 127 ± 4.00 MM		6 ± .157 INCHES 152 ± 4.00 MM		7 ± .157 INCHES 178 ± 4.00 MM		8 ± .157 INCHES 203 ± 4.00 MM		9 ± .197 INCHES 229 ± 5.00 MM		10 ± .197 INCHES 254 ± 5.00 MM		12 ± .197 INCHES 305 ± 5.00 MM	
	STIFFENER	TYPE "A"	TYPE "D"	TYPE "A"	TYPE "D"	TYPE "A"	TYPE "D"	TYPE "A"	TYPE "D"	TYPE "A"	TYPE "D"	TYPE "A"	TYPE "D"	TYPE "A"	TYPE "D"	TYPE "A"	TYPE "D"	TYPE "A"	TYPE "D"	TYPE "A"	TYPE "D"	TYPE "A"
CKTS: 4	151670701	151670700	151670703	151670702	151670705	151670704	151670707	151670706	151670709	151670708	151670711	151670710	151670713	151670712	151670715	151670714	151670717	151670716	151670719	151670718	151670721	151670720
CKTS: 6	151670201	151670202	151670203	151670204	151670205	151670206	151670207	151670208	151670209	151670210	151670211	151670212	151670213	151670214	151670215	151670216	151670217	151670218	151670219	151670220	151670221	151670222
CKTS: 8	151670223	151670224	151670225	151670226	151670227	151670228	151670229	151670230	151670231	151670232	151670233	151670234	151670235	151670236	151670237	151670238	151670239	151670240	151670241	151670242	151670243	151670244
CKTS: 10	151670245	151670246	151670247	151670248	151670249	151670250	151670251	151670252	151670253	151670254	151670255	151670256	151670257	151670258	151670259	151670260	151670261	151670262	151670263	151670264	151670265	151670266
CKTS: 12	151670267	151670268	151670269	151670270	151670271	151670272	151670273	151670274	151670275	151670276	151670277	151670278	151670279	151670280	151670281	151670282	151670283	151670284	151670285	151670286	151670287	151670288
CKTS: 14	151670289	151670290	151670291	151670292	151670293	151670294	151670295	151670296	151670297	928670298	151670299	151670300	151670301	151670302	151670303	151670304	151670305	151670306	151670307	151670308	151670309	151670310
CKTS: 16	151670311	151670312	151670313	151670314	151670315	151670316	151670317	151670318	151670319	151670320	151670321	151670322	151670323	151670324	151670325	151670326	151670327	151670328	151670329	151670330	151670331	151670332
CKTS: 18	151670333	151670334	151670335	151670336	151670337	151670338	151670339	151670340	151670341	151670342	151670343	151670344	151670345	151670346	151670347	151670348	151670349	151670350	151670351	151670352	151670353	151670354
CKTS: 20	151670355	151670356	151670357	151670358	151670359	151670360	151670361	151670362	151670363	151670364	151670365	151670366	151670367	151670368	151670369	151670370	151670371	151670372	151670373	151670374	151670375	151670376
CKTS: 22	151670377	151670378	151670379	151670380	151670381	151670382	151670383	151670384	151670385	151670386	151670387	151670388	151670389	151670390	151670391	151670392	151670393	151670394	151670395	151670396	151670397	151670398
CKTS: 24	151670399	151670400	151670401	151670402	151670403	151670404	151670405	151670406	151670407	151670408	151670409	151670410	151670411	151670412	151670413	151670414	151670415	151670416	151670417	151670418	151670419	151670420
CKTS: 26	151670421	151670422	151670423	151670424	151670425	151670426	151670427	151670428	151670429	151670430	151670431	151670432	151670433	151670434	151670435	151670436	151670437	151670438	151670439	151670440	151670441	151670442
CKTS: 28	151670443	151670444	151670445	151670446	151670447	151670448	151670449	151670450	151670451	151670452	151670453	151670454	151670455	151670456	151670457	151670458	151670459	151670460	151670461	151670462	151670463	151670464
CKTS: 30	151670465	151670466	151670467	151670468	151670469	151670470	151670471	151670472	151670473	151670474	151670475	151670476	151670477	151670478	151670479	151670480	151670481	151670482	151670483	151670484	151670485	151670486
CKTS: 32	151670487	151670488	151670489	151670490	151670491	151670492	151670493	151670494	151670495	151670496	151670497	151670498	151670499	151670500	151670501	151670502	151670503	151670504	151670505	151670506	151670507	151670508
CKTS: 34	151670509	151670510	151670511	151670512	151670513	151670514	151670515	151670516	151670517	151670518	151670519	151670520	151670521	151670522	151670523	151670524	151670525	151670526	151670527	151670528	151670529	151670530
CKTS: 36	151670531	151670532	151670533	151670534	151670535	151670536	151670537	151670538	151670539	151670540	151670541	151670542	151670543	151670544	151670545	151670546	151670547	151670548	151670549	151670550	151670551	151670552
CKTS: 38	151670553	151670554	151670555	151670556	151670557	151670558	151670559	151670560	151670561	151670562	151670563	151670564	151670565	151670566	151670567	151670568	151670569	151670570	151670571	151670572	151670573	151670574
CKTS: 40	151670575	151670576	151670577	151670578	151670579	151670580	151670581	151670582	151670583	151670584	151670585	151670586	151670587	151670588	151670589	151670590	151670591	151670592	151670593	151670594	151670595	151670596



NOTES:
 1. NO PRINTING ON JUMPER CABLE UNLESS OTHERWISE SPECIFIED. IF PRINTING IS REQUIRED, THEN IT WOULD BE CONSIDERED A SPECIAL JUMPER CABLE.

RELEASED	EC NO.: USW2012-0099 DRWN: JLW 2011/10/28	DESCRIPTION	QUALITY SYMBOL	GENERAL TOLERANCES (UNLESS SPECIFIED)	DIMENSION STYLE	SCALE	DESIGN UNITS	THIRD ANGLE PROJECTION
			▼=0	mm INCH	MM	---	METRIC	1.00MM CENTER FFC JUMPER CABLE
			∇=0	4 PLACES ±---	DRAWN BY DATE	TITLE		
			3 PLACES ±---	CHECKED BY DATE				
			2 PLACES ±---	1 PLACE ±---	APPROVED BY DATE	MOLEX MOLEX INCORPORATED		
1	1	REV	ANGULAR ±1/2°	DRAFT WHERE APPLICABLE MUST REMAIN WITHIN DIMENSIONS	SEE CHART	SD-15167-001	SHEET NO. 1 OF 2	
					SIZE C	THIS DRAWING CONTAINS INFORMATION THAT IS PROPRIETARY TO MOLEX INCORPORATED AND SHOULD NOT BE USED WITHOUT WRITTEN PERMISSION		

13

12

11

10

9

8

7

6

5

4

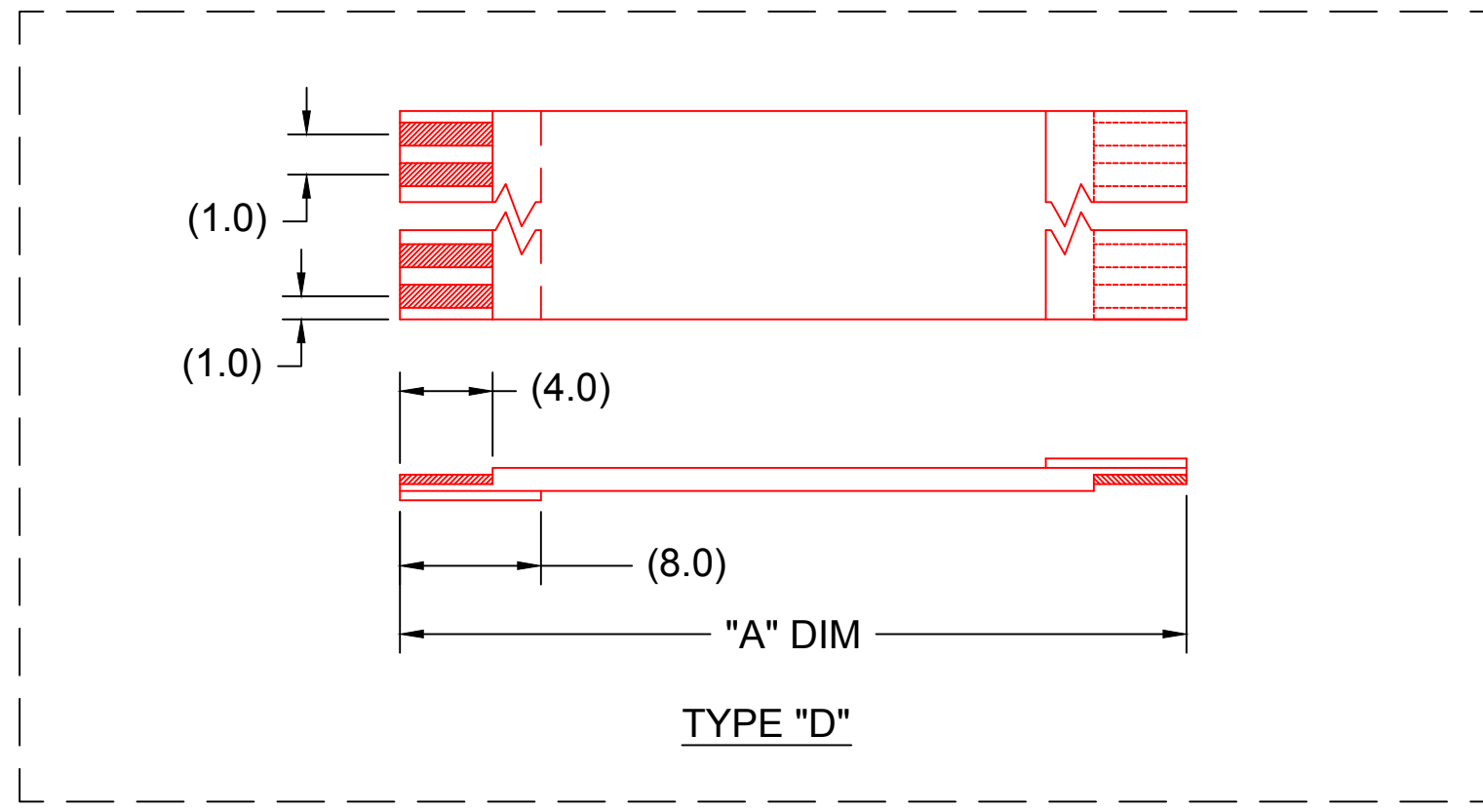
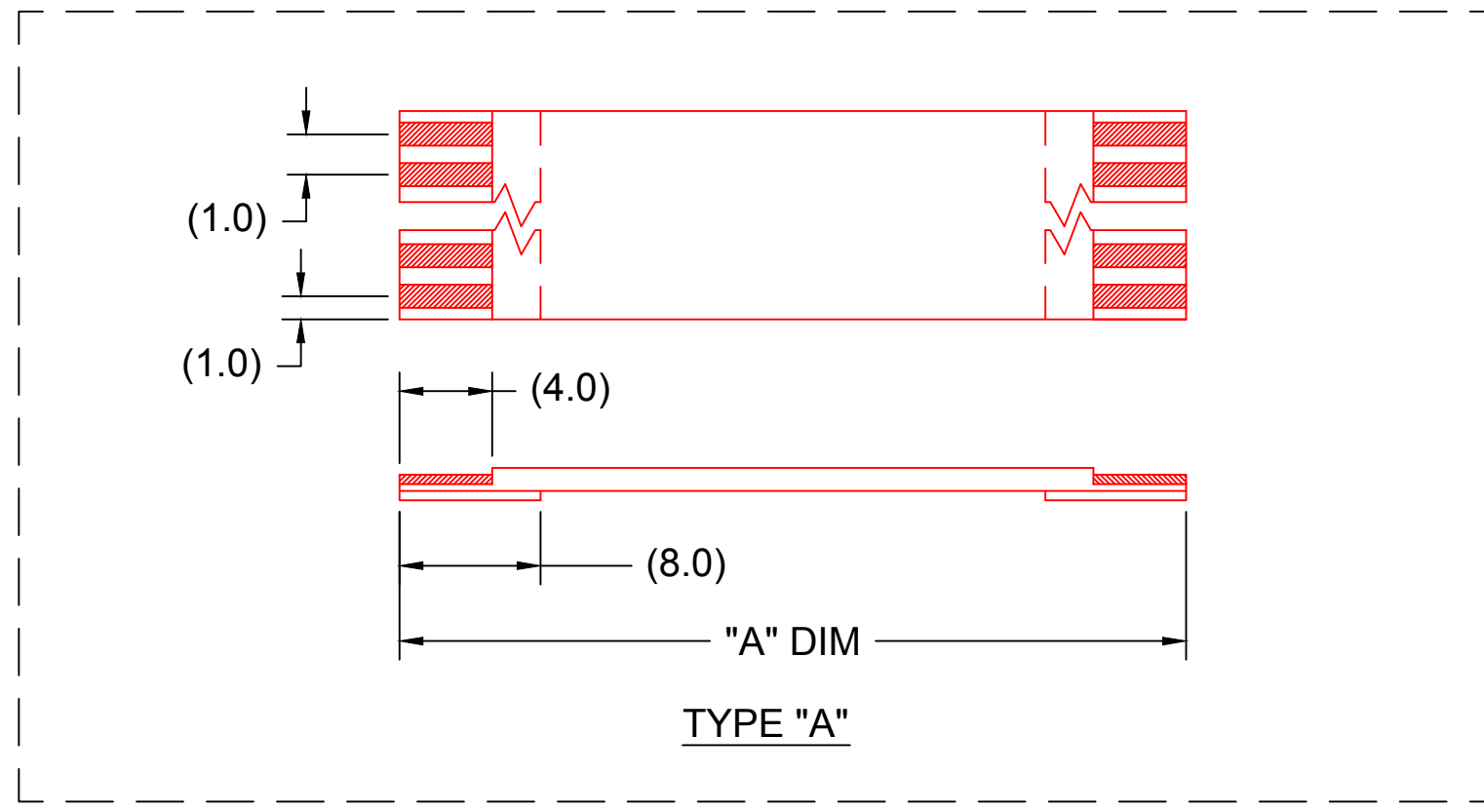
3

2

1

1.00MM CENTER FFC JUMPER CABLE (HIGH TEMPERATURE) CHART

"A" DIM.	1.18 ± .079 INCHES 30 ± 2.00		2 ± .079 INCHES 51 ± 2.00 MM		3 ± .118 INCHES 76 ± 3.00 MM		4 ± .118 INCHES 102 ± 3.00 MM		5 ± .157 INCHES 127 ± 4.00 MM		6 ± .157 INCHES 152 ± 4.00 MM		7 ± .157 INCHES 178 ± 4.00 MM		8 ± .157 INCHES 203 ± 4.00 MM		9 ± .197 INCHES 229 ± 5.00 MM		10 ± .197 INCHES 254 ± 5.00 MM		12 ± .197 INCHES 305 ± 5.00 MM	
	STIFFENER	TYPE "A"	TYPE "D"	TYPE "A"	TYPE "D"	TYPE "A"	TYPE "D"	TYPE "A"	TYPE "D"	TYPE "A"	TYPE "D"	TYPE "A"	TYPE "D"	TYPE "A"	TYPE "D"	TYPE "A"	TYPE "D"	TYPE "A"	TYPE "D"	TYPE "A"	TYPE "D"	TYPE "A"
CKTS: 5	151670723	151670722	151670725	151670724	151670727	151670726	151670729	151670728	151670731	151670730	151670733	151670732	151670735	151670734	151670737	151670736	151670739	151670738	151670741	151670740	151670743	151670742
CKTS: 7	151670745	151670744	151670747	151670746	151670749	151670748	151670751	151670750	151670753	151670752	151670755	151670754	151670757	151670756	151670759	151670758	151670761	151670760	151670763	151670762	151670765	151670764
CKTS: 9	151670767	151670766	151670769	151670768	151670771	151670770	151670773	151670772	151670775	151670774	151670777	151670776	151670779	151670778	151670781	151670780	151670783	151670782	151670785	151670784	151670787	151670786
CKTS: 11	151670789	151670788	151670791	151670790	151670793	151670792	151670795	151670794	151670797	151670796	151670799	151670798	151670801	151670800	151670803	151670802	151670805	151670804	151670807	151670806	151670809	151670808
CKTS: 13	151670811	151670810	151670813	151670812	151670815	151670814	151670817	151670816	151670819	151670818	151670821	151670820	151670823	151670822	151670825	151670824	151670827	151670826	151670829	151670828	151670831	151670830
CKTS: 15	151670833	151670832	151670835	151670834	151670837	151670836	151670839	151670838	151670841	151670840	151670843	151670842	151670845	151670844	151670847	151670846	151670849	151670848	151670851	151670850	151670853	151670852
CKTS: 17	151670855	151670854	151670857	151670856	151670859	151670858	151670861	151670860	151670863	151670862	151670865	151670864	151670867	151670866	151670869	151670868	151670871	151670870	151670873	151670872	151670875	151670874
CKTS: 19	151670877	151670876	151670879	151670878	151670881	151670880	151670883	151670882	151670885	151670884	151670887	151670886	151670889	151670888	151670891	151670890	151670893	151670892	151670895	151670894	151670897	151670896
CKTS: 21	151670899	151670898	151670901	151670900	151670903	151670902	151670905	151670904	151670907	151670906	151670909	151670908	151670911	151670910	151670913	151670912	151670915	151670914	151670917	151670916	151670919	151670918
CKTS: 23	151670921	151670920	151670923	151670922	151670925	151670924	151670927	151670926	151670929	151670928	151670931	151670930	151670933	151670932	151670935	151670934	151670937	151670936	151670939	151670938	151670941	151670940
CKTS: 25	151670943	151670942	151670945	151670944	151670947	151670946	151670949	151670948	151670951	151670950	151670953	151670952	151670955	151670954	151670957	151670956	151670959	151670958	151670961	151670960	151670963	151670962
CKTS: 27	151670965	151670964	151670967	151670966	151670969	151670968	151670971	151670970	151670973	151670972	151670975	151670974	151670977	151670976	151670979	151670978	151670981	151670980	151670983	151670982	151670985	151670984
CKTS: 29	151670987	151670986	151670989	151670988	151670991	151670990	151670993	151670992	151670995	151670994	151670997	151670996	151670999	151670998	151671001	151671000	151671003	151671002	151671005	151671004	151671007	151671006
CKTS: 31	151671009	151671008	151671011	151671010	151671013	151671012	151671015	151671014	151671017	151671016	151671019	151671018	151671021	151671020	151671023	151671022	151671025	151671024	151671027	151671026	151671029	151671028
CKTS: 33	151671031	151671030	151671033	151671032	151671035	151671034	151671037	151671036	151671039	151671038	151671041	151671040	151671043	151671042	151671045	151671044	151671047	151671046	151671049	151671048	151671051	151671050
CKTS: 35	151671053	151671052	151671055	151671054	151671057	151671056	151671059	151671058	151671061	151671060	151671063	151671062	151671065	151671064	151671067	151671066	151671069	151671068	151671071	151671070	151671073	151671072
CKTS: 37	151671075	151671074	151671077	151671076	151671079	151671078	151671081	151671080	151671083	151671082	151671085	151671084	151671087	151671086	151671089	151671088	151671091	151671090	151671093	151671092	151671095	151671094
CKTS: 39	151671097	151671096	151671099	151671098	151671101	151671100	151671103	151671102	151671105	151671104	151671107	151671106	151671109	151671108	151671111	151671110	151671113	151671112	151671115	151671114	151671117	151671116



NOTES:

1. NO PRINTING ON JUMPER CABLE UNLESS OTHERWISE SPECIFIED. IF PRINTING IS REQUIRED, THEN IT WOULD BE CONSIDERED A SPECIAL JUMPER CABLE.

SEE SHEET 1	EC NO: DRWN: REV	DESCRIPTION	QUALITY SYMBOL	GENERAL TOLERANCES (UNLESS SPECIFIED)		DIMENSION STYLE		SCALE	DESIGN UNITS	THIRD ANGLE PROJECTION		
			▼=0	mm	INCH	MM	---	METRIC				
			∇=0	4 PLACES	±---	±---	DRAWN BY	DATE	TITLE		1.00MM CENTER FFC JUMPER CABLE	
				3 PLACES	±---	±---	CHECKED BY	DATE				
				2 PLACES	±---	±---	APPROVED BY DATE		MOLEX MOLEX INCORPORATED			
	1 PLACE	±---	±---	SFULTON	2011/11/03	DOCUMENT NO.		SD-15167-001				
	1		ANGULAR ±1/2°	DRAFT WHERE APPLICABLE MUST REMAIN WITHIN DIMENSIONS		MATERIAL NO. SEE CHART		SHEET NO. 2 OF 2				
				SIZE C	THIS DRAWING CONTAINS INFORMATION THAT IS PROPRIETARY TO MOLEX INCORPORATED AND SHOULD NOT BE USED WITHOUT WRITTEN PERMISSION							

13

12

11

10

9

8

7

6

5

4

3

2

1



Компания «ЭлектроПласт» предлагает заключение долгосрочных отношений при поставках импортных электронных компонентов на взаимовыгодных условиях!

Наши преимущества:

- Оперативные поставки широкого спектра электронных компонентов отечественного и импортного производства напрямую от производителей и с крупнейших мировых складов;
- Поставка более 17-ти миллионов наименований электронных компонентов;
- Поставка сложных, дефицитных, либо снятых с производства позиций;
- Оперативные сроки поставки под заказ (от 5 рабочих дней);
- Экспресс доставка в любую точку России;
- Техническая поддержка проекта, помощь в подборе аналогов, поставка прототипов;
- Система менеджмента качества сертифицирована по Международному стандарту ISO 9001;
- Лицензия ФСБ на осуществление работ с использованием сведений, составляющих государственную тайну;
- Поставка специализированных компонентов (Xilinx, Altera, Analog Devices, Intersil, Interpoint, Microsemi, Aeroflex, Peregrine, Syfer, Eurofarad, Texas Instrument, Miteq, Cobham, E2V, MA-COM, Hittite, Mini-Circuits, General Dynamics и др.);

Помимо этого, одним из направлений компании «ЭлектроПласт» является направление «Источники питания». Мы предлагаем Вам помощь Конструкторского отдела:

- Подбор оптимального решения, техническое обоснование при выборе компонента;
- Подбор аналогов;
- Консультации по применению компонента;
- Поставка образцов и прототипов;
- Техническая поддержка проекта;
- Защита от снятия компонента с производства.



Как с нами связаться

Телефон: 8 (812) 309 58 32 (многоканальный)

Факс: 8 (812) 320-02-42

Электронная почта: org@eplast1.ru

Адрес: 198099, г. Санкт-Петербург, ул. Калинина, дом 2, корпус 4, литера А.