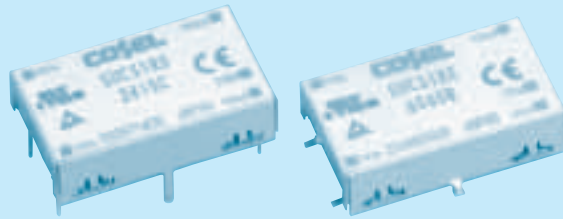
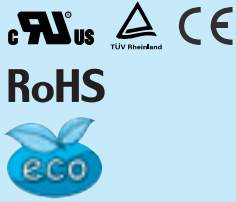


SUCS1R5

SUC S 1R5 12 05 B P - □

① ② ③ ④ ⑤ ⑥ ⑦ ⑧



- ① Series name
 - ② Single output
 - ③ Output wattage
 - ④ Input voltage
 - ⑤ Output voltage
 - ⑥ Mounting type
B :SMD
C :DIP
 - ⑦ Packing form
Blank:Plastic cover
P :Tray (SMD type)
 - ⑧ Optional
C :with coating (only DIP type)*
- *Safety standards are pending

| MODEL | SUCS1R5053R3 | SUCS1R50505 | SUCS1R50512 | SUCS1R50515 | SUCS1R5123R3 | SUCS1R51205 | SUCS1R51212 | SUCS1R51215 | |
|-----------------------|---------------|-------------|-------------|-------------|--------------|-------------|-------------|-------------|-----|
| MAX OUTPUT WATTAGE[W] | 1.32 | 1.5 | 1.56 | 1.5 | 1.32 | 1.5 | 1.56 | 1.5 | |
| DC OUTPUT | VOLTAGE[V] *1 | 3.3 | 5 | 12 | 15 | 3.3 | 5 | 12 | 15 |
| | CURRENT[A] | 0.4 | 0.3 | 0.13 | 0.1 | 0.4 | 0.3 | 0.13 | 0.1 |

SPECIFICATIONS

| | MODEL | SUCS1R5053R3 | SUCS1R50505 | SUCS1R50512 | SUCS1R50515 | SUCS1R5123R3 | SUCS1R51205 | SUCS1R51212 | SUCS1R51215 | |
|---------------------------------|--|--|---------------|---------------|-------------|--------------|---------------|---------------|-------------|--------|
| INPUT | VOLTAGE[V] | DC4.5 - 9 | | | | DC9 - 18 | | | | |
| | CURRENT[A] | *2 0.388typ | 0.417typ | 0.433typ | 0.417typ | 0.157typ | 0.169typ | 0.176typ | 0.169typ | |
| | EFFICIENCY[%] | *2 68typ | 72typ | 72typ | 72typ | 70typ | 74typ | 74typ | 74typ | |
| OUTPUT | VOLTAGE[V] | 3.3 | 5 | 12 | 15 | 3.3 | 5 | 12 | 15 | |
| | CURRENT[A] | 0.4 | 0.3 | 0.13 | 0.1 | 0.4 | 0.3 | 0.13 | 0.1 | |
| | LINE REGULATION[mV] | 20max | 20max | 48max | 60max | 20max | 20max | 48max | 60max | |
| | LOAD REGULATION[mV] | 40max | 40max | 100max | 120max | 40max | 40max | 100max | 120max | |
| | RIPPLE[mVp-p] | -20 to +55°C *3 | 80max | 80max | 120max | 120max | 80max | 80max | 120max | 120max |
| | | -40 to -20°C *3 | 120max | 120max | 150max | 150max | 120max | 120max | 150max | 150max |
| | RIPPLE NOISE[mVp-p] | -20 to +55°C *3 | 120max | 120max | 150max | 150max | 120max | 120max | 150max | 150max |
| | | -40 to -20°C *3 | 200max | 200max | 200max | 200max | 200max | 200max | 200max | 200max |
| | TEMPERATURE REGULATION[mV] | -20 to +55°C | 50max | 50max | 150max | 180max | 50max | 50max | 150max | 180max |
| | | -40 to +55°C | 80max | 80max | 240max | 290max | 80max | 80max | 240max | 290max |
| DRIFT[mV] | *4 20max | 20max | 48max | 60max | 20max | 20max | 48max | 60max | | |
| START-UP TIME[ms] | 20max (Minimum input, Io=100%) | | | | | | | | | |
| OUTPUT VOLTAGE ADJUSTMENT RANGE | Fixed (TRM pin open) ±5% adjustable by external VR | | | | | | | | | |
| OUTPUT VOLTAGE SETTING[V] (±3%) | 3.21 - 3.42 | 4.90 - 5.21 | 11.64 - 12.36 | 14.55 - 15.45 | 3.21 - 3.42 | 4.90 - 5.21 | 11.64 - 12.36 | 14.55 - 15.45 | | |
| PROTECTION CIRCUIT AND OTHERS | OVERCURRENT PROTECTION | Works over 105% of rating and recovers automatically | | | | | | | | |

| MODEL | SUCS1R5243R3 | SUCS1R52405 | SUCS1R52412 | SUCS1R52415 | SUCS1R5483R3 | SUCS1R54805 | SUCS1R54812 | SUCS1R54815 | |
|-----------------------|---------------|-------------|-------------|-------------|--------------|-------------|-------------|-------------|-----|
| MAX OUTPUT WATTAGE[W] | 1.32 | 1.5 | 1.56 | 1.5 | 1.32 | 1.5 | 1.56 | 1.5 | |
| DC OUTPUT | VOLTAGE[V] *1 | 3.3 | 5 | 12 | 15 | 3.3 | 5 | 12 | 15 |
| | CURRENT[A] | 0.4 | 0.3 | 0.13 | 0.1 | 0.4 | 0.3 | 0.13 | 0.1 |

SPECIFICATIONS

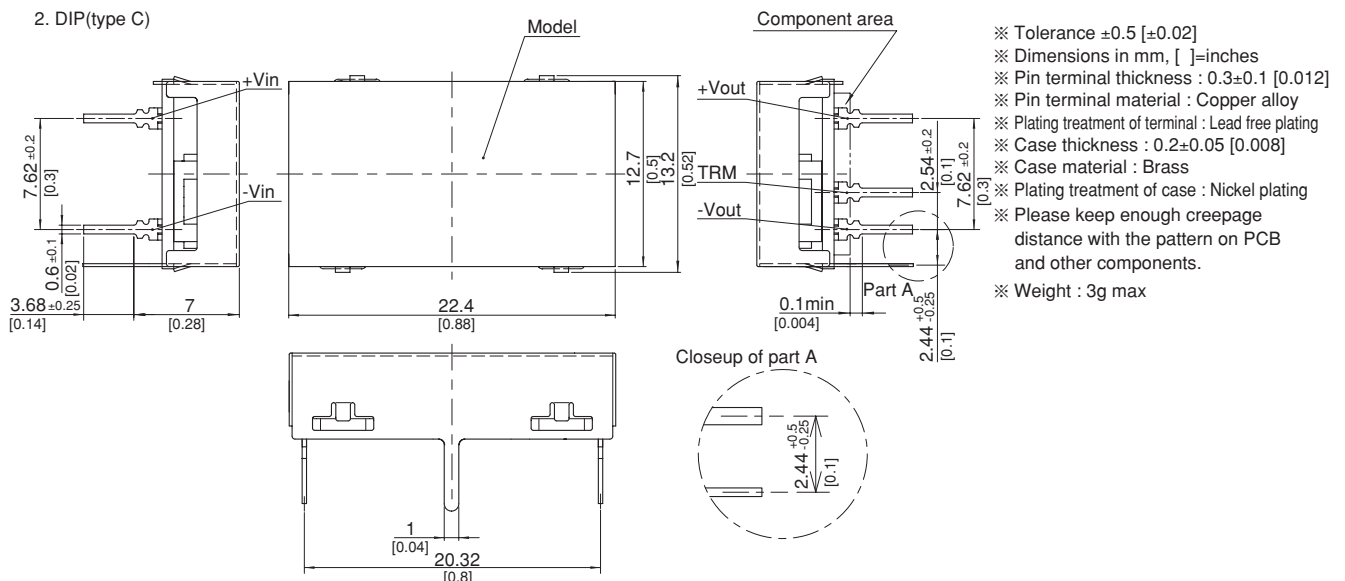
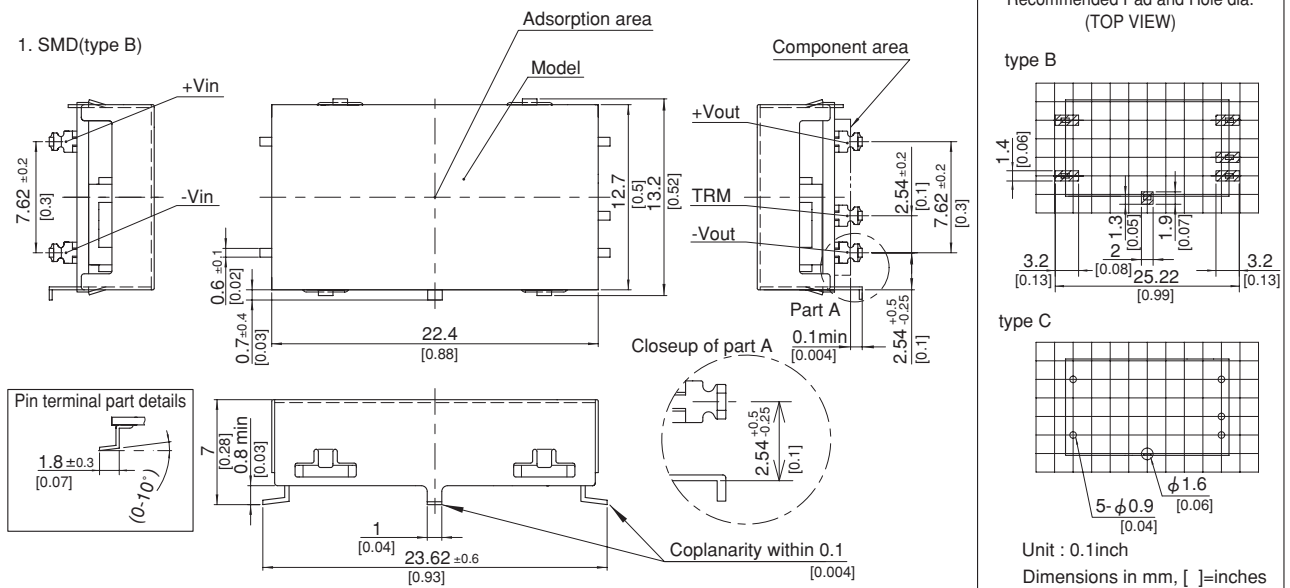
| | MODEL | SUCS1R5243R3 | SUCS1R52405 | SUCS1R52412 | SUCS1R52415 | SUCS1R5483R3 | SUCS1R54805 | SUCS1R54812 | SUCS1R54815 | |
|---------------------------------|--|--|---------------|---------------|-------------|--------------|---------------|---------------|-------------|--------|
| INPUT | VOLTAGE[V] | DC18 - 36 | | | | DC36 - 76 | | | | |
| | CURRENT[A] | *2 0.079typ | 0.084typ | 0.087typ | 0.083typ | 0.039typ | 0.042typ | 0.043typ | 0.042typ | |
| | EFFICIENCY[%] | *2 70typ | 74typ | 75typ | 75typ | 70typ | 74typ | 75typ | 75typ | |
| OUTPUT | VOLTAGE[V] | 3.3 | 5 | 12 | 15 | 3.3 | 5 | 12 | 15 | |
| | CURRENT[A] | 0.4 | 0.3 | 0.13 | 0.1 | 0.4 | 0.3 | 0.13 | 0.1 | |
| | LINE REGULATION[mV] | 20max | 20max | 48max | 60max | 20max | 20max | 48max | 60max | |
| | LOAD REGULATION[mV] | 40max | 40max | 100max | 120max | 40max | 40max | 100max | 120max | |
| | RIPPLE[mVp-p] | -20 to +55°C *3 | 80max | 80max | 120max | 120max | 80max | 80max | 120max | 120max |
| | | -40 to -20°C *3 | 120max | 120max | 150max | 150max | 120max | 120max | 150max | 150max |
| | RIPPLE NOISE[mVp-p] | -20 to +55°C *3 | 120max | 120max | 150max | 150max | 120max | 120max | 150max | 150max |
| | | -40 to -20°C *3 | 200max | 200max | 200max | 200max | 200max | 200max | 200max | 200max |
| | TEMPERATURE REGULATION[mV] | -20 to +55°C | 50max | 50max | 150max | 180max | 50max | 50max | 150max | 180max |
| | | -40 to +55°C | 80max | 80max | 240max | 290max | 80max | 80max | 240max | 290max |
| DRIFT[mV] | *4 20max | 20max | 48max | 60max | 20max | 20max | 48max | 60max | | |
| START-UP TIME[ms] | 20max (Minimum input, Io=100%) | | | | | | | | | |
| OUTPUT VOLTAGE ADJUSTMENT RANGE | Fixed (TRM pin open) ±5% adjustable by external VR | | | | | | | | | |
| OUTPUT VOLTAGE SETTING[V] (±3%) | 3.21 - 3.42 | 4.90 - 5.21 | 11.64 - 12.36 | 14.55 - 15.45 | 3.21 - 3.42 | 4.90 - 5.21 | 11.64 - 12.36 | 14.55 - 15.45 | | |
| PROTECTION CIRCUIT AND OTHERS | OVERCURRENT PROTECTION | Works over 105% of rating and recovers automatically | | | | | | | | |

GENERAL SPECIFICATIONS

| | | |
|-------------|------------------------------------|--|
| ISOLATION | INPUT-OUTPUT | AC500V 1minute, Cutoff current = 10mA, DC500V 50MΩ min (20±15°C) |
| | INPUT-CASE | AC500V 1minute, Cutoff current = 10mA, DC500V 50MΩ min (20±15°C) |
| | OUTPUT-CASE | AC500V 1minute, Cutoff current = 10mA, DC500V 50MΩ min (20±15°C) |
| ENVIRONMENT | OPERATING TEMP.,HUMID.AND ALTITUDE | -40 to +85°C, 20 - 95%RH (Non condensing) (Required Derating), 3,000m (10,000feet) max |
| | STORAGE TEMP.,HUMID.AND ALTITUDE | -40 to +100°C, 20 - 95%RH (Non condensing), 9,000m (30,000feet) max |
| | VIBRATION | 10 - 55Hz, 98.0m/s ² (10G), 3minutes period, 60minutes each along X, Y and Z axis |
| | IMPACT | 490.3m/s ² (50G), 11ms, once each along X, Y and Z axis |
| SAFETY | AGENCY APPROVALS | UL60950-1, C-UL, EN60950-1 |
| OTHERS | CASE SIZE/WEIGHT | 22.4×7.0×13.2mm [0.88×0.28×0.52 inches] (W×H×D) / 3g max |
| | COOLING METHOD | Convection/Forced air |

- *1 SUCW1R5xx12/SUCW1R5xx15 is available as single output, +24V/+30V.
- *2 Rated input 5V, 12V, 24V or 48V DC I_o=100%
- *3 Ripple and Ripple Noise is measured by using measuring board with capacitor with in 25mm from output pin terminals.
- *4 Drift is the change in DC output for an eight hour period after a half-hour warm-up at 25°C.
- * Parallel operation with other model is not possible.

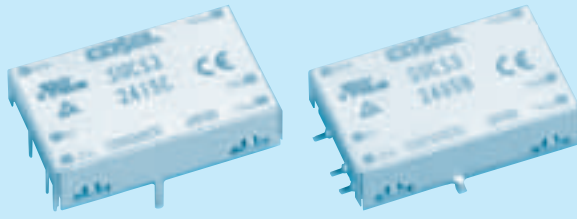
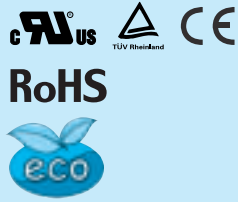
External view



SUCS3

SUC S 3 12 05 B P - □

① ② ③ ④ ⑤ ⑥ ⑦ ⑧



- ① Series name
 - ② Single output
 - ③ Output wattage
 - ④ Input voltage
 - ⑤ Output voltage
 - ⑥ Mounting type
B :SMD
C :DIP
 - ⑦ Packing form
Blank:Plastic cover
P :Tray (SMD type)
 - ⑧ Optional
G :Capacitor between Input and Output is removed.
C :with coating (only DIP type)*
- * Safety standards are pending

| MODEL | SUCS3053R3 | SUCS30505 | SUCS30512 | SUCS30515 | SUCS3123R3 | SUCS31205 | SUCS31212 | SUCS31215 | |
|-----------------------|---------------|-----------|-----------|-----------|------------|-----------|-----------|-----------|-----|
| MAX OUTPUT WATTAGE[W] | 1.98 | 3 | 3 | 3 | 1.98 | 3 | 3 | 3 | |
| DC OUTPUT | VOLTAGE[V] *1 | 3.3 | 5 | 12 | 15 | 3.3 | 5 | 12 | 15 |
| | CURRENT[A] | 0.6 | 0.6 | 0.25 | 0.2 | 0.6 | 0.6 | 0.25 | 0.2 |

SPECIFICATIONS

| | MODEL | SUCS3053R3 | SUCS30505 | SUCS30512 | SUCS30515 | SUCS3123R3 | SUCS31205 | SUCS31212 | SUCS31215 | |
|---------------------------------|--|--|---------------|---------------|-------------|-------------|---------------|---------------|-----------|--------|
| INPUT | VOLTAGE[V] | DC4.5 - 9 | | | | DC9 - 18 | | | | |
| | CURRENT[A] *2 | 0.550typ | 0.800typ | 0.780typ | 0.780typ | 0.223typ | 0.325typ | 0.317typ | 0.321typ | |
| | EFFICIENCY[%] *2 | 72typ | 75typ | 77typ | 77typ | 74typ | 77typ | 79typ | 78typ | |
| OUTPUT | VOLTAGE[V] | 3.3 | 5 | 12 | 15 | 3.3 | 5 | 12 | 15 | |
| | CURRENT[A] | 0.6 | 0.6 | 0.25 | 0.2 | 0.6 | 0.6 | 0.25 | 0.2 | |
| | LINE REGULATION[mV] | 20max | 20max | 48max | 60max | 20max | 20max | 48max | 60max | |
| | LOAD REGULATION[mV] | 40max | 40max | 100max | 120max | 40max | 40max | 100max | 120max | |
| | RIPPLE[mVp-p] | -20 to +55°C *3 | 80max | 80max | 120max | 120max | 80max | 80max | 120max | 120max |
| | | -40 to -20°C *3 | 120max | 120max | 150max | 150max | 120max | 120max | 150max | 150max |
| | RIPPLE NOISE[mVp-p] | -20 to +55°C *3 | 120max | 120max | 150max | 150max | 120max | 120max | 150max | 150max |
| | | -40 to -20°C *3 | 200max | 200max | 200max | 200max | 200max | 200max | 200max | 200max |
| | TEMPERATURE REGULATION[mV] | -20 to +55°C | 50max | 50max | 150max | 180max | 50max | 50max | 150max | 180max |
| | | -40 to +55°C | 80max | 80max | 240max | 290max | 80max | 80max | 240max | 290max |
| DRIFT[mV] *4 | 20max | 20max | 48max | 60max | 20max | 20max | 48max | 60max | | |
| START-UP TIME[ms] | 20max (Minimum input, Io=100%) | | | | | | | | | |
| OUTPUT VOLTAGE ADJUSTMENT RANGE | Fixed (TRM pin open) ±5% adjustable by external VR | | | | | | | | | |
| OUTPUT VOLTAGE SETTING[V] (±3%) | 3.21 - 3.42 | 4.90 - 5.21 | 11.64 - 12.36 | 14.55 - 15.45 | 3.21 - 3.42 | 4.90 - 5.21 | 11.64 - 12.36 | 14.55 - 15.45 | | |
| PROTECTION CIRCUIT AND OTHERS | OVERCURRENT PROTECTION | Works over 105% of rating and recovers automatically | | | | | | | | |
| | REMOTE ON/OFF | Provided (Negative logic L : ON, H : OFF) | | | | | | | | |

| MODEL | SUCS3243R3 | SUCS32405 | SUCS32412 | SUCS32415 | SUCS3483R3 | SUCS34805 | SUCS34812 | SUCS34815 | |
|-----------------------|---------------|-----------|-----------|-----------|------------|-----------|-----------|-----------|-----|
| MAX OUTPUT WATTAGE[W] | 1.98 | 3 | 3 | 3 | 1.98 | 3 | 3 | 3 | |
| DC OUTPUT | VOLTAGE[V] *1 | 3.3 | 5 | 12 | 15 | 3.3 | 5 | 12 | 15 |
| | CURRENT[A] | 0.6 | 0.6 | 0.25 | 0.2 | 0.6 | 0.6 | 0.25 | 0.2 |

SPECIFICATIONS

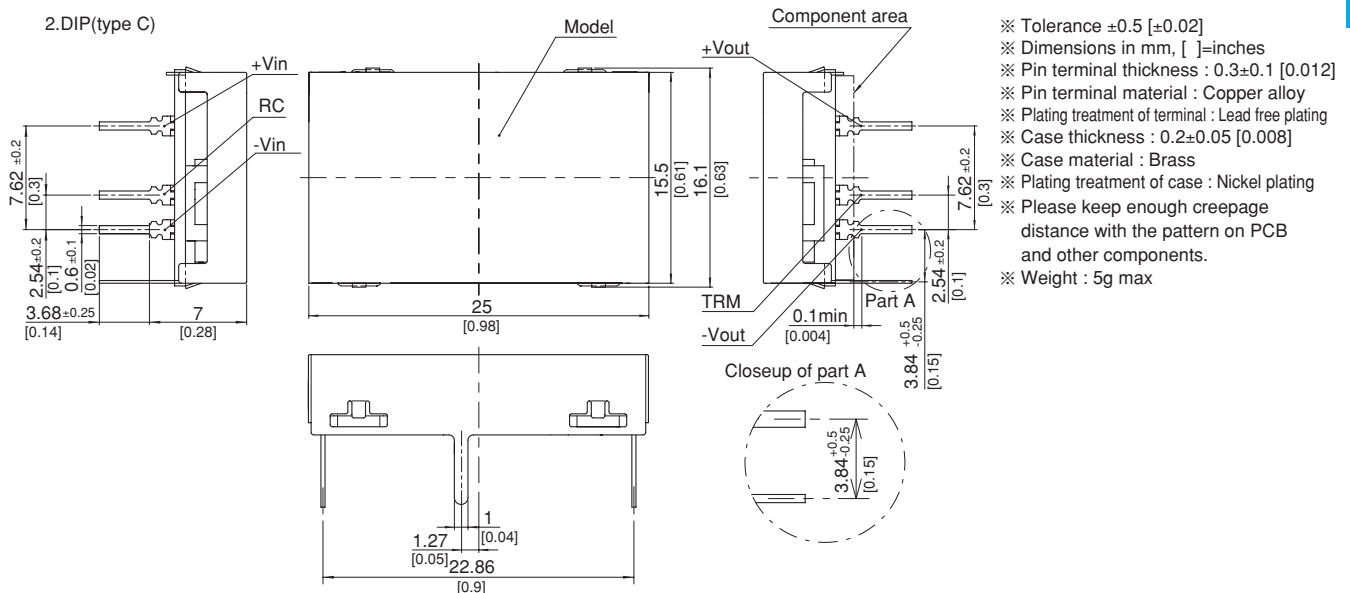
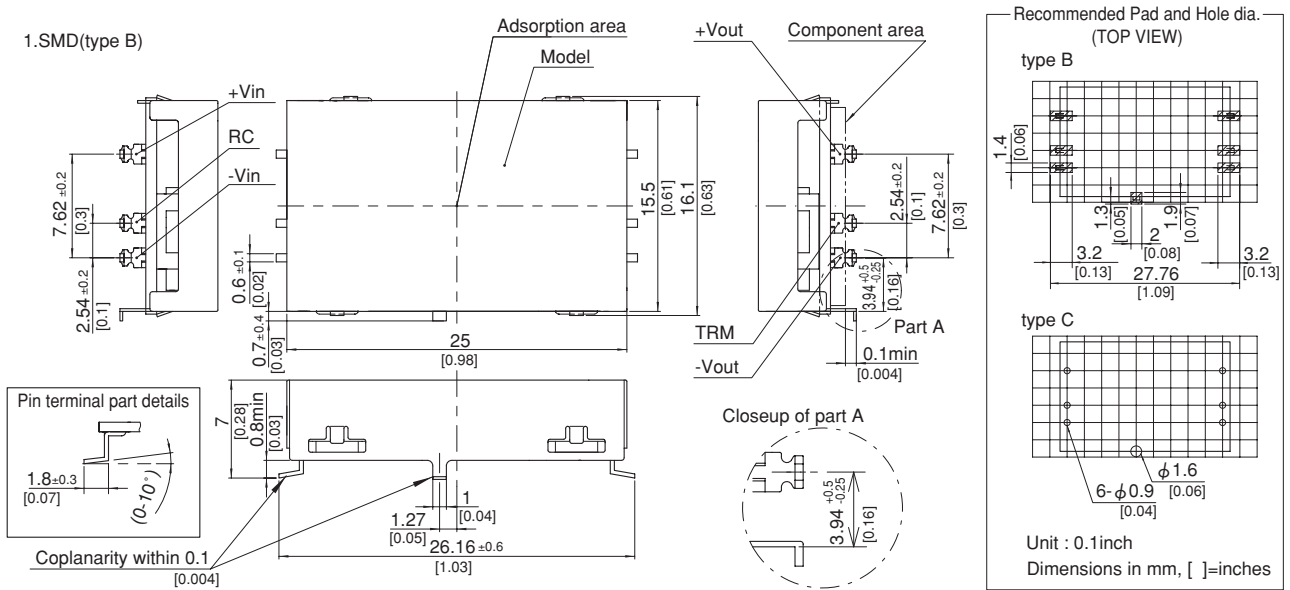
| | MODEL | SUCS3243R3 | SUCS32405 | SUCS32412 | SUCS32415 | SUCS3483R3 | SUCS34805 | SUCS34812 | SUCS34815 | |
|---------------------------------|--|--|---------------|---------------|-------------|-------------|---------------|---------------|-----------|--------|
| INPUT | VOLTAGE[V] | DC18 - 36 | | | | DC36 - 76 | | | | |
| | CURRENT[A] *2 | 0.114typ | 0.163typ | 0.159typ | 0.161typ | 0.057typ | 0.082typ | 0.080typ | 0.080typ | |
| | EFFICIENCY[%] *2 | 73typ | 77typ | 79typ | 78typ | 72typ | 77typ | 79typ | 79typ | |
| OUTPUT | VOLTAGE[V] | 3.3 | 5 | 12 | 15 | 3.3 | 5 | 12 | 15 | |
| | CURRENT[A] | 0.6 | 0.6 | 0.25 | 0.2 | 0.6 | 0.6 | 0.25 | 0.2 | |
| | LINE REGULATION[mV] | 20max | 20max | 48max | 60max | 20max | 20max | 48max | 60max | |
| | LOAD REGULATION[mV] | 40max | 40max | 100max | 120max | 40max | 40max | 100max | 120max | |
| | RIPPLE[mVp-p] | -20 to +55°C *3 | 80max | 80max | 120max | 120max | 80max | 80max | 120max | 120max |
| | | -40 to -20°C *3 | 120max | 120max | 150max | 150max | 120max | 120max | 150max | 150max |
| | RIPPLE NOISE[mVp-p] | -20 to +55°C *3 | 120max | 120max | 150max | 150max | 120max | 120max | 150max | 150max |
| | | -40 to -20°C *3 | 200max | 200max | 200max | 200max | 200max | 200max | 200max | 200max |
| | TEMPERATURE REGULATION[mV] | -20 to +55°C | 50max | 50max | 150max | 180max | 50max | 50max | 150max | 180max |
| | | -40 to +55°C | 80max | 80max | 240max | 290max | 80max | 80max | 240max | 290max |
| DRIFT[mV] *4 | 20max | 20max | 48max | 60max | 20max | 20max | 48max | 60max | | |
| START-UP TIME[ms] | 20max (Minimum input, Io=100%) | | | | | | | | | |
| OUTPUT VOLTAGE ADJUSTMENT RANGE | Fixed (TRM pin open) ±5% adjustable by external VR | | | | | | | | | |
| OUTPUT VOLTAGE SETTING[V] (±3%) | 3.21 - 3.42 | 4.90 - 5.21 | 11.64 - 12.36 | 14.55 - 15.45 | 3.21 - 3.42 | 4.90 - 5.21 | 11.64 - 12.36 | 14.55 - 15.45 | | |
| PROTECTION CIRCUIT AND OTHERS | OVERCURRENT PROTECTION | Works over 105% of rating and recovers automatically | | | | | | | | |
| | REMOTE ON/OFF | Provided (Negative logic L : ON, H : OFF) | | | | | | | | |

GENERAL SPECIFICATIONS

| | | |
|-------------|-----------------------------------|--|
| ISOLATION | INPUT-OUTPUT | AC500V 1minute, Cutoff current = 10mA, DC500V 50MΩ min (20±15°C) |
| | INPUT-CASE | AC500V 1minute, Cutoff current = 10mA, DC500V 50MΩ min (20±15°C) |
| | OUTPUT-CASE | AC500V 1minute, Cutoff current = 10mA, DC500V 50MΩ min (20±15°C) |
| ENVIRONMENT | OPERATING TEMP.,HUMID.AND ALTIUDE | -40 to +85°C, 20 - 95%RH (Non condensing) (Required Derating), 3,000m (10,000feet) max |
| | STORAGE TEMP.,HUMID.AND ALTIUDE | -40 to +100°C, 20 - 95%RH (Non condensing), 9,000m (30,000feet) max |
| | VIBRATION | 10 - 55Hz, 98.0m/s ² (10G), 3minutes period, 60minutes each along X, Y and Z axis |
| | IMPACT | 490.3m/s ² (50G), 11ms, once each along X, Y and Z axis |
| SAFETY | AGENCY APPROVALS | UL60950-1, C-UL, EN60950-1 |
| OTHERS | CASE SIZE/WEIGHT | 25×7.0×16.1mm [0.98×0.28×0.63 inches] (W×H×D) / 5g max |
| | COOLING METHOD | Convection/Forced air |

- *1 SUCW3xx12/SUCW3xx15 is available as single output, +24V/+30V.
- *2 Rated input 5V, 12V, 24V or 48V DC Io=100%
- *3 Ripple and Ripple Noise is measured by using measuring board with capacitor with in 25mm from output pin terminals.
- *4 Drift is the change in DC output for an eight hour period after a half-hour warm-up at 25°C.
- * Parallel operation with other model is not possible.

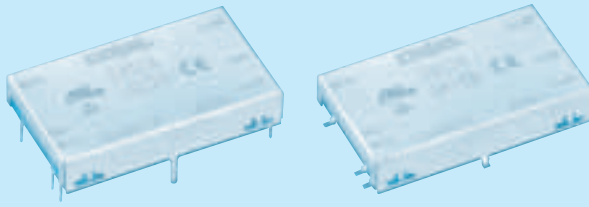
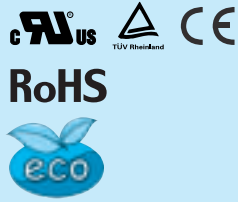
External view



SUCS6

SUC S 6 12 05 B P - □

① ② ③ ④ ⑤ ⑥ ⑦ ⑧



- ① Series name
 - ② Single output
 - ③ Output wattage
 - ④ Input voltage
 - ⑤ Output voltage
 - ⑥ Mounting type
B :SMD
C :DIP
 - ⑦ Packing form
Blank:Plastic cover
P :Tray (SMD type)
 - ⑧ Optional
G :Capacitor between Input and Output is removed.
C :with coating (only DIP type)*
- * Safety standards are pending

| MODEL | SUCS6053R3 | SUCS60505 | SUCS60512 | SUCS60515 | SUCS6123R3 | SUCS61205 | SUCS61212 | SUCS61215 | |
|-----------------------|---------------|-----------|-----------|-----------|------------|-----------|-----------|-----------|-----|
| MAX OUTPUT WATTAGE[W] | 3.96 | 5 | 6 | 6 | 4.46 | 6 | 6 | 6 | |
| DC OUTPUT | VOLTAGE[V] *1 | 3.3 | 5 | 12 | 15 | 3.3 | 5 | 12 | 15 |
| | CURRENT[A] | 1.2 | 1 | 0.5 | 0.4 | 1.35 | 1.2 | 0.5 | 0.4 |

SPECIFICATIONS

| | MODEL | SUCS6053R3 | SUCS60505 | SUCS60512 | SUCS60515 | SUCS6123R3 | SUCS61205 | SUCS61212 | SUCS61215 | |
|---------------------------------|--|--|---------------|---------------|-------------|-------------|---------------|---------------|-----------|--------|
| INPUT | VOLTAGE[V] | DC4.5 - 9 | | | | DC9 - 18 | | | | |
| | CURRENT[A] *2 | 1.100typ | 1.316typ | 1.500typ | 1.500typ | 0.502typ | 0.617typ | 0.588typ | 0.588typ | |
| | EFFICIENCY[%] *2 | 72typ | 76typ | 80typ | 80typ | 74typ | 81typ | 85typ | 85typ | |
| OUTPUT | VOLTAGE[V] | 3.3 | 5 | 12 | 15 | 3.3 | 5 | 12 | 15 | |
| | CURRENT[A] | 1.2 | 1 | 0.5 | 0.4 | 1.35 | 1.2 | 0.5 | 0.4 | |
| | LINE REGULATION[mV] | 20max | 20max | 48max | 60max | 20max | 20max | 48max | 60max | |
| | LOAD REGULATION[mV] | 40max | 40max | 100max | 120max | 40max | 40max | 100max | 120max | |
| | RIPPLE[mVp-p] | -20 to +55°C *3 | 80max | 80max | 120max | 120max | 80max | 80max | 120max | 120max |
| | | -40 to -20°C *3 | 120max | 120max | 150max | 150max | 120max | 120max | 150max | 150max |
| | RIPPLE NOISE[mVp-p] | -20 to +55°C *3 | 120max | 120max | 150max | 150max | 120max | 120max | 150max | 150max |
| | | -40 to -20°C *3 | 200max | 200max | 200max | 200max | 200max | 200max | 200max | 200max |
| | TEMPERATURE REGULATION[mV] | -20 to +55°C | 50max | 50max | 150max | 180max | 50max | 50max | 150max | 180max |
| | | -40 to +55°C | 80max | 80max | 240max | 290max | 80max | 80max | 240max | 290max |
| DRIFT[mV] *4 | 20max | 20max | 48max | 60max | 20max | 20max | 48max | 60max | | |
| START-UP TIME[ms] | 20max (Minimum input, Io=100%) | | | | | | | | | |
| OUTPUT VOLTAGE ADJUSTMENT RANGE | Fixed (TRM pin open) ±5% adjustable by external VR | | | | | | | | | |
| OUTPUT VOLTAGE SETTING[V] (±3%) | 3.21 - 3.42 | 4.90 - 5.21 | 11.64 - 12.36 | 14.55 - 15.45 | 3.21 - 3.42 | 4.90 - 5.21 | 11.64 - 12.36 | 14.55 - 15.45 | | |
| PROTECTION CIRCUIT AND OTHERS | OVERCURRENT PROTECTION | Works over 105% of rating and recovers automatically | | | | | | | | |
| | REMOTE ON/OFF | Provided (Negative logic L : ON, H : OFF) | | | | | | | | |

| MODEL | SUCS6243R3 | SUCS62405 | SUCS62412 | SUCS62415 | SUCS6483R3 | SUCS64805 | SUCS64812 | SUCS64815 | |
|-----------------------|---------------|-----------|-----------|-----------|------------|-----------|-----------|-----------|-----|
| MAX OUTPUT WATTAGE[W] | 4.46 | 6 | 6 | 6 | 4.46 | 6 | 6 | 6 | |
| DC OUTPUT | VOLTAGE[V] *1 | 3.3 | 5 | 12 | 15 | 3.3 | 5 | 12 | 15 |
| | CURRENT[A] | 1.35 | 1.2 | 0.5 | 0.4 | 1.35 | 1.2 | 0.5 | 0.4 |

SPECIFICATIONS

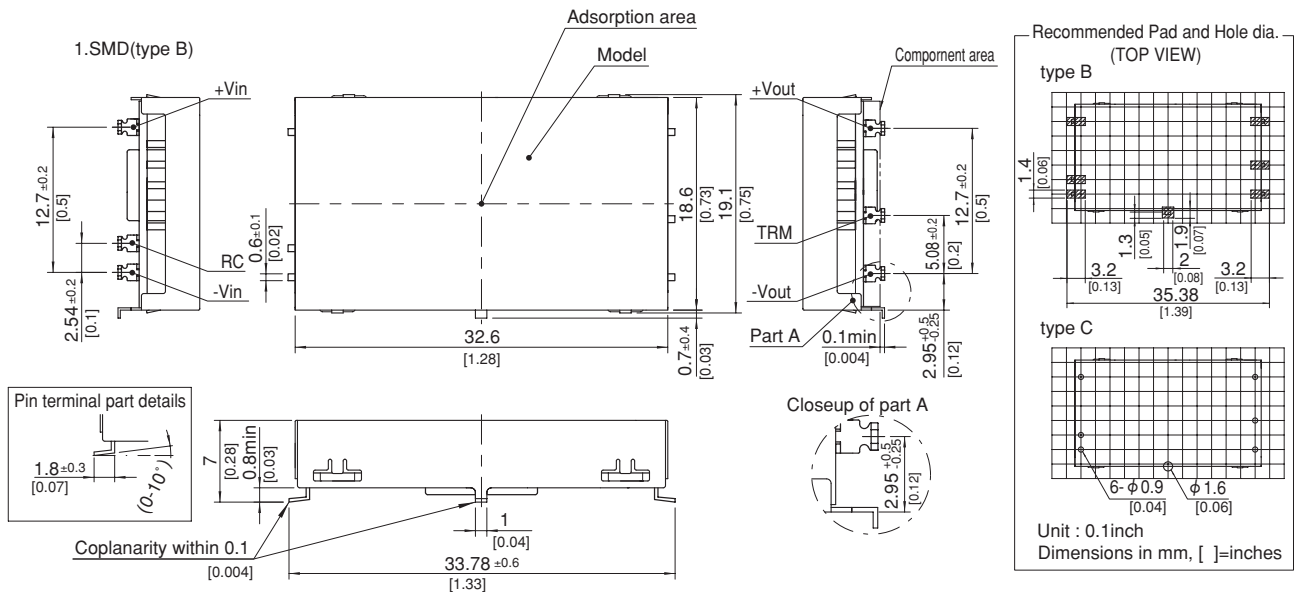
| | MODEL | SUCS6243R3 | SUCS62405 | SUCS62412 | SUCS62415 | SUCS6483R3 | SUCS64805 | SUCS64812 | SUCS64815 | |
|---------------------------------|--|--|---------------|---------------|-------------|-------------|---------------|---------------|-----------|--------|
| INPUT | VOLTAGE[V] | DC18 - 36 | | | | DC36 - 76 | | | | |
| | CURRENT[A] *2 | 0.248typ | 0.309typ | 0.291typ | 0.291typ | 0.121typ | 0.154typ | 0.145typ | 0.145typ | |
| | EFFICIENCY[%] *2 | 75typ | 81typ | 86typ | 86typ | 77typ | 81typ | 86typ | 86typ | |
| OUTPUT | VOLTAGE[V] | 3.3 | 5 | 12 | 15 | 3.3 | 5 | 12 | 15 | |
| | CURRENT[A] | 1.35 | 1.2 | 0.5 | 0.4 | 1.35 | 1.2 | 0.5 | 0.4 | |
| | LINE REGULATION[mV] | 20max | 20max | 48max | 60max | 20max | 20max | 48max | 60max | |
| | LOAD REGULATION[mV] | 40max | 40max | 100max | 120max | 40max | 40max | 100max | 120max | |
| | RIPPLE[mVp-p] | -20 to +55°C *3 | 80max | 80max | 120max | 120max | 80max | 80max | 120max | 120max |
| | | -40 to -20°C *3 | 120max | 120max | 150max | 150max | 120max | 120max | 150max | 150max |
| | RIPPLE NOISE[mVp-p] | -20 to +55°C *3 | 120max | 120max | 150max | 150max | 120max | 120max | 150max | 150max |
| | | -40 to -20°C *3 | 200max | 200max | 200max | 200max | 200max | 200max | 200max | 200max |
| | TEMPERATURE REGULATION[mV] | -20 to +55°C | 50max | 50max | 150max | 180max | 50max | 50max | 150max | 180max |
| | | -40 to +55°C | 80max | 80max | 240max | 290max | 80max | 80max | 240max | 290max |
| DRIFT[mV] *4 | 20max | 20max | 48max | 60max | 20max | 20max | 48max | 60max | | |
| START-UP TIME[ms] | 20max (Minimum input, Io=100%) | | | | | | | | | |
| OUTPUT VOLTAGE ADJUSTMENT RANGE | Fixed (TRM pin open) ±5% adjustable by external VR | | | | | | | | | |
| OUTPUT VOLTAGE SETTING[V] (±3%) | 3.21 - 3.42 | 4.90 - 5.21 | 11.64 - 12.36 | 14.55 - 15.45 | 3.21 - 3.42 | 4.90 - 5.21 | 11.64 - 12.36 | 14.55 - 15.45 | | |
| PROTECTION CIRCUIT AND OTHERS | OVERCURRENT PROTECTION | Works over 105% of rating and recovers automatically | | | | | | | | |
| | REMOTE ON/OFF | Provided (Negative logic L : ON, H : OFF) | | | | | | | | |

GENERAL SPECIFICATIONS

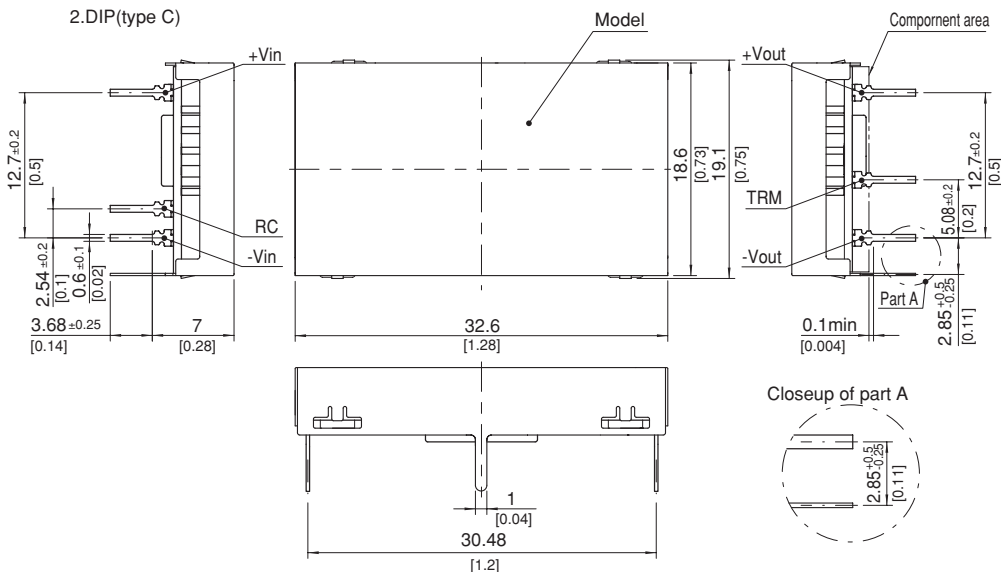
| | | |
|-------------|------------------------------------|--|
| ISOLATION | INPUT-OUTPUT | AC500V 1minute, Cutoff current = 10mA, DC500V 50MΩ min (20±15°C) |
| | INPUT-CASE | AC500V 1minute, Cutoff current = 10mA, DC500V 50MΩ min (20±15°C) |
| | OUTPUT-CASE | AC500V 1minute, Cutoff current = 10mA, DC500V 50MΩ min (20±15°C) |
| ENVIRONMENT | OPERATING TEMP.,HUMID.AND ALTITUDE | -40 to +85°C, 20 - 95%RH (Non condensing) (Required Derating), 3,000m (10,000feet) max |
| | STORAGE TEMP.,HUMID.AND ALTITUDE | -40 to +100°C, 20 - 95%RH (Non condensing), 9,000m (30,000feet) max |
| | VIBRATION | 10 - 55Hz, 98.0m/s ² (10G), 3minutes period, 60minutes each along X, Y and Z axis |
| | IMPACT | 490.3m/s ² (50G), 11ms, once each along X, Y and Z axis |
| SAFETY | AGENCY APPROVALS | UL60950-1, C-UL, EN60950-1 |
| OTHERS | CASE SIZE/WEIGHT | 32.6×7.0×19.1mm [1.28×0.28×0.75 inches] (W×H×D) / 7g max |
| | COOLING METHOD | Convection/Forced air |

- *1 SUCW6xx12/SUCW6xx15 is available as single output, +24V/+30V.
- *2 Rated input 5V, 12V, 24V or 48V DC Io=100%
- *3 Ripple and Ripple Noise is measured by using measuring board with capacitor with in 25mm from output pin terminals.
- *4 Drift is the change in DC output for an eight hour period after a half-hour warm-up at 25°C.
- * Parallel operation with other model is not possible.

External view



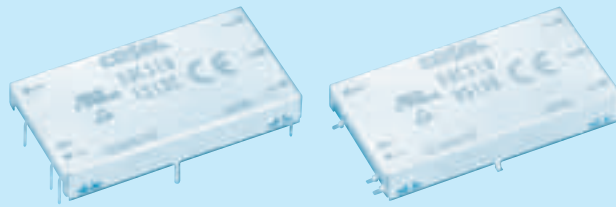
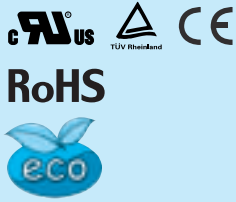
- ※ Tolerance ±0.5 [±0.02]
- ※ Dimensions in mm, []=inches
- ※ Pin terminal thickness : 0.3±0.1 [0.012]
- ※ Pin terminal material : Copper alloy
- ※ Plating treatment of terminal : Lead free plating
- ※ Case thickness : 0.2±0.05 [0.008]
- ※ Case material : Brass
- ※ Plating treatment of case : Nickel plating
- ※ Please keep enough creepage distance with the pattern on PCB and other components.
- ※ Weight : 7g max



SUCS10

SUC S 10 12 05 B P - □

① ② ③ ④ ⑤ ⑥ ⑦ ⑧



- ① Series name
 - ② Single output
 - ③ Output wattage
 - ④ Input voltage
 - ⑤ Output voltage
 - ⑥ Mounting type
B :SMD
C :DIP
 - ⑦ Packing form
Blank:Plastic cover
P :Tray (SMD type)
 - ⑧ Optional
G :Capacitor between Input and Output is removed.
C :with coating (only DIP type)*
- * Safety standards are pending

| MODEL | SUCS10053R3 | SUCS100505 | SUCS100512 | SUCS100515 | SUCS10123R3 | SUCS101205 | SUCS101212 | SUCS101215 | |
|-----------------------|---------------|------------|------------|------------|-------------|------------|------------|------------|-----|
| MAX OUTPUT WATTAGE[W] | 8.58 | 10 | 10.8 | 10.5 | 8.58 | 10 | 12 | 12 | |
| DC OUTPUT | VOLTAGE[V] *1 | 3.3 | 5 | 12 | 15 | 3.3 | 5 | 12 | 15 |
| | CURRENT[A] | 2.6 | 2 | 0.9 | 0.7 | 2.6 | 2 | 1 | 0.8 |

SPECIFICATIONS

| | MODEL | SUCS10053R3 | SUCS100505 | SUCS100512 | SUCS100515 | SUCS10123R3 | SUCS101205 | SUCS101212 | SUCS101215 | |
|---------------------------------|--|--|---------------|---------------|-------------|-------------|---------------|---------------|------------|--------|
| INPUT | VOLTAGE[V] | DC4.5 - 9 | | | | DC9 - 18 | | | | |
| | CURRENT[A] *2 | 2.12typ | 2.41typ | 2.54typ | 2.47typ | 0.872typ | 0.980typ | 1.15typ | 1.15typ | |
| | EFFICIENCY[%] *2 | 81typ | 83typ | 85typ | 85typ | 82typ | 85typ | 87typ | 87typ | |
| OUTPUT | VOLTAGE[V] | 3.3 | 5 | 12 | 15 | 3.3 | 5 | 12 | 15 | |
| | CURRENT[A] | 2.6 | 2 | 0.9 | 0.7 | 2.6 | 2 | 1 | 0.8 | |
| | LINE REGULATION[mV] | 20max | 20max | 48max | 60max | 20max | 20max | 48max | 60max | |
| | LOAD REGULATION[mV] | 40max | 40max | 100max | 120max | 40max | 40max | 100max | 120max | |
| | RIPPLE[mVp-p] | -20 to +55°C *3 | 80max | 80max | 120max | 120max | 80max | 80max | 120max | 120max |
| | | -40 to -20°C *3 | 120max | 120max | 150max | 150max | 120max | 120max | 150max | 150max |
| | RIPPLE NOISE[mVp-p] | -20 to +55°C *3 | 120max | 120max | 150max | 150max | 120max | 120max | 150max | 150max |
| | | -40 to -20°C *3 | 200max | 200max | 200max | 200max | 200max | 200max | 200max | 200max |
| | TEMPERATURE REGULATION[mV] | -20 to +55°C | 50max | 50max | 150max | 180max | 50max | 50max | 150max | 180max |
| | | -40 to +55°C | 80max | 80max | 240max | 290max | 80max | 80max | 240max | 290max |
| DRIFT[mV] *4 | 20max | 20max | 48max | 60max | 20max | 20max | 48max | 60max | | |
| START-UP TIME[ms] | 20max (Minimum input, Io=100%) | | | | | | | | | |
| OUTPUT VOLTAGE ADJUSTMENT RANGE | Fixed (TRM pin open) ±5% adjustable by external VR | | | | | | | | | |
| OUTPUT VOLTAGE SETTING[V] (±3%) | 3.21 - 3.42 | 4.90 - 5.21 | 11.64 - 12.36 | 14.55 - 15.45 | 3.21 - 3.42 | 4.90 - 5.21 | 11.64 - 12.36 | 14.55 - 15.45 | | |
| PROTECTION CIRCUIT AND OTHERS | OVERCURRENT PROTECTION | Works over 105% of rating and recovers automatically | | | | | | | | |
| | REMOTE ON/OFF | Provided (Negative logic L : ON, H : OFF) | | | | | | | | |

| MODEL | SUCS10243R3 | SUCS102405 | SUCS102412 | SUCS102415 | SUCS10483R3 | SUCS104805 | SUCS104812 | SUCS104815 | |
|-----------------------|---------------|------------|------------|------------|-------------|------------|------------|------------|-----|
| MAX OUTPUT WATTAGE[W] | 8.58 | 10 | 12 | 12 | 8.58 | 10 | 12 | 12 | |
| DC OUTPUT | VOLTAGE[V] *1 | 3.3 | 5 | 12 | 15 | 3.3 | 5 | 12 | 15 |
| | CURRENT[A] | 2.6 | 2 | 1 | 0.8 | 2.6 | 2 | 1 | 0.8 |

SPECIFICATIONS

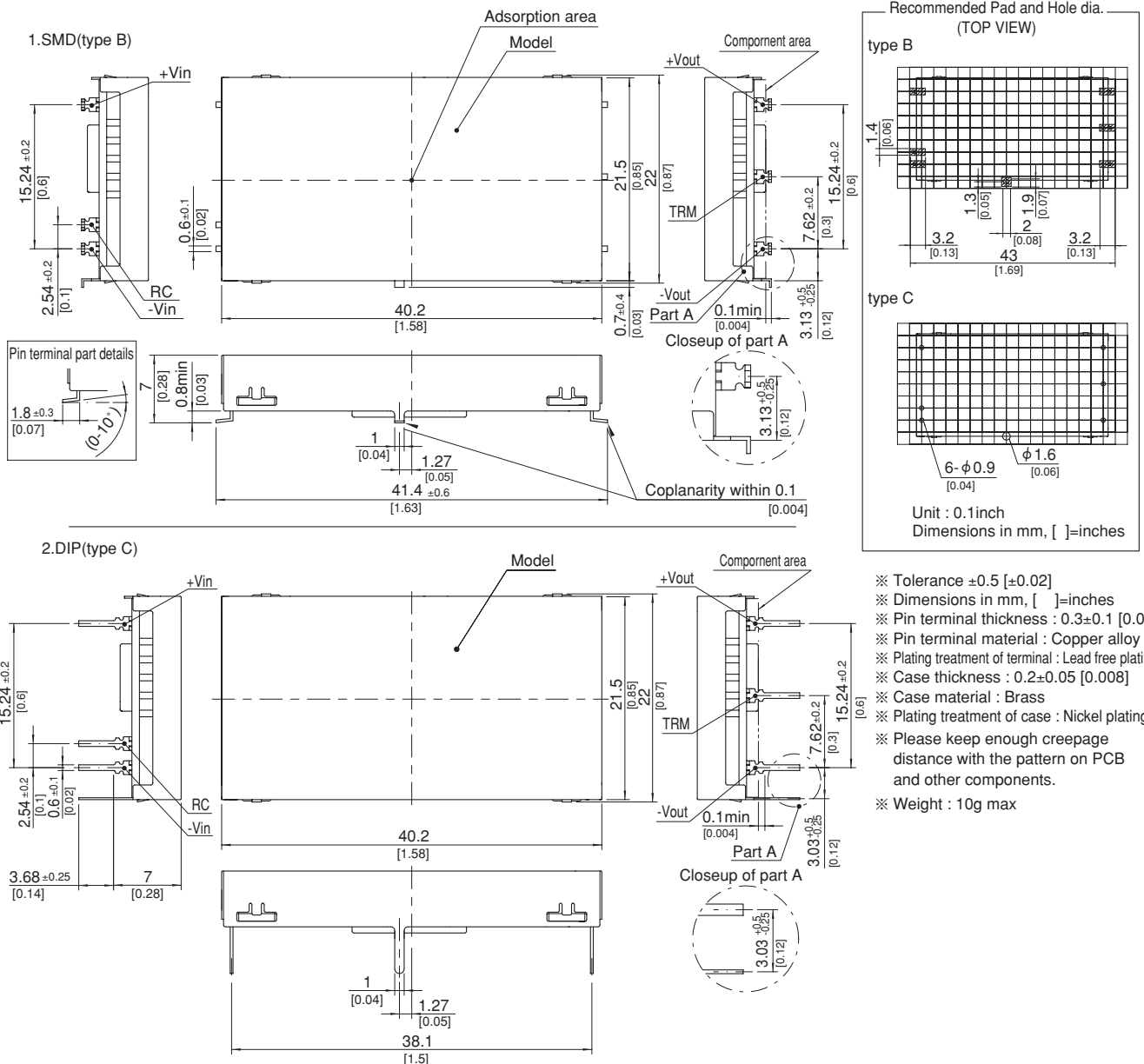
| | MODEL | SUCS10243R3 | SUCS102405 | SUCS102412 | SUCS102415 | SUCS10483R3 | SUCS104805 | SUCS104812 | SUCS104815 | |
|---------------------------------|--|--|---------------|---------------|-------------|-------------|---------------|---------------|------------|--------|
| INPUT | VOLTAGE[V] | DC18 - 36 | | | | DC36 - 76 | | | | |
| | CURRENT[A] *2 | 0.436typ | 0.490typ | 0.575typ | 0.575typ | 0.218typ | 0.245typ | 0.287typ | 0.287typ | |
| | EFFICIENCY[%] *2 | 82typ | 85typ | 87typ | 87typ | 82typ | 85typ | 87typ | 87typ | |
| OUTPUT | VOLTAGE[V] | 3.3 | 5 | 12 | 15 | 3.3 | 5 | 12 | 15 | |
| | CURRENT[A] | 2.6 | 2 | 1 | 0.8 | 2.6 | 2 | 1 | 0.8 | |
| | LINE REGULATION[mV] | 20max | 20max | 48max | 60max | 20max | 20max | 48max | 60max | |
| | LOAD REGULATION[mV] | 40max | 40max | 100max | 120max | 40max | 40max | 100max | 120max | |
| | RIPPLE[mVp-p] | -20 to +55°C *3 | 80max | 80max | 120max | 120max | 80max | 80max | 120max | 120max |
| | | -40 to -20°C *3 | 120max | 120max | 150max | 150max | 120max | 120max | 150max | 150max |
| | RIPPLE NOISE[mVp-p] | -20 to +55°C *3 | 120max | 120max | 150max | 150max | 120max | 120max | 150max | 150max |
| | | -40 to -20°C *3 | 200max | 200max | 200max | 200max | 200max | 200max | 200max | 200max |
| | TEMPERATURE REGULATION[mV] | -20 to +55°C | 50max | 50max | 150max | 180max | 50max | 50max | 150max | 180max |
| | | -40 to +55°C | 80max | 80max | 240max | 290max | 80max | 80max | 240max | 290max |
| DRIFT[mV] *4 | 20max | 20max | 48max | 60max | 20max | 20max | 48max | 60max | | |
| START-UP TIME[ms] | 20max (Minimum input, Io=100%) | | | | | | | | | |
| OUTPUT VOLTAGE ADJUSTMENT RANGE | Fixed (TRM pin open) ±5% adjustable by external VR | | | | | | | | | |
| OUTPUT VOLTAGE SETTING[V] (±3%) | 3.21 - 3.42 | 4.90 - 5.21 | 11.64 - 12.36 | 14.55 - 15.45 | 3.21 - 3.42 | 4.90 - 5.21 | 11.64 - 12.36 | 14.55 - 15.45 | | |
| PROTECTION CIRCUIT AND OTHERS | OVERCURRENT PROTECTION | Works over 105% of rating and recovers automatically | | | | | | | | |
| | REMOTE ON/OFF | Provided (Negative logic L : ON, H : OFF) | | | | | | | | |

GENERAL SPECIFICATIONS

| | | |
|-------------|------------------------------------|--|
| ISOLATION | INPUT-OUTPUT | AC500V 1minute, Cutoff current = 10mA, DC500V 50MΩ min (20±15°C) |
| | INPUT-CASE | AC500V 1minute, Cutoff current = 10mA, DC500V 50MΩ min (20±15°C) |
| | OUTPUT-CASE | AC500V 1minute, Cutoff current = 10mA, DC500V 50MΩ min (20±15°C) |
| ENVIRONMENT | OPERATING TEMP.,HUMID.AND ALTITUDE | -40 to +85°C, 20 - 95%RH (Non condensing) (Required Derating), 3,000m (10,000feet) max |
| | STORAGE TEMP.,HUMID.AND ALTITUDE | -40 to +100°C, 20 - 95%RH (Non condensing), 9,000m (30,000feet) max |
| | VIBRATION | 10 - 55Hz, 98.0m/s ² (10G), 3minutes period, 60minutes each along X, Y and Z axis |
| | IMPACT | 490.3m/s ² (50G), 11ms, once each along X, Y and Z axis |
| SAFETY | AGENCY APPROVALS | UL60950-1, C-UL, EN60950-1 |
| OTHERS | CASE SIZE/WEIGHT | 40.2×7.0×22.0mm [1.58×0.28×0.87 inches] (W×H×D) / 10g max |
| | COOLING METHOD | Convection/Forced air |

- *1 SUCW10xx12/SUCW10xx15 is available as single output, +24V/+30V.
- *2 Rated input 5V, 12V, 24V or 48V DC I_o=100%
- *3 Ripple and Ripple Noise is measured by using measuring board with capacitor with in 25mm from output pin terminals.
- *4 Drift is the change in DC output for an eight hour period after a half-hour warm-up at 25°C.
- * Parallel operation with other model is not possible.

External view



SE-SUCSUT

Mouser Electronics

Authorized Distributor

Click to View Pricing, Inventory, Delivery & Lifecycle Information:

Cosel:

[SUCS102415C](#) [SUCS6483R3BP](#) [SUCS32415C](#) [SUCS30512C-G](#) [SUCS1R50512B](#) [SUCS32412C](#) [SUCS100515B](#)
[SUCS1R51212C-C](#) [SUCS64815C](#) [SUCS62415C-C](#) [SUCS1R5243R3C](#) [SUCS101215C-C](#) [SUCS32412B-G](#)
[SUCS1R52405BP](#) [SUCS6123R3C-C](#) [SUCS102415B-G](#) [SUCS34805C-C](#) [SUCS31212C-G](#) [SUCS6053R3C-G](#)
[SUCS1R54812BP](#) [SUCS102412B-G](#) [SUCS60512C](#) [SUCS101205BP](#) [SUCS1R5053R3C](#) [SUCS1R54815B](#)
[SUCS3243R3B](#) [SUCS64805BP](#) [SUCS104805B](#) [SUCS102405C-C](#) [SUCS61212C-G](#) [SUCS32415B](#) [SUCS64812C-C](#)
[SUCS62412BP](#) [SUCS31215BP](#) [SUCS61215C](#) [SUCS101212B](#) [SUCS102412C](#) [SUCS31205C](#) [SUCS3483R3BP](#)
[SUCS30505C](#) [SUCS100505C](#) [SUCS1R51215C](#) [SUCS101212C-C](#) [SUCS1R54815C-C](#) [SUCS6243R3B-G](#)
[SUCS6243R3C](#) [SUCS1R50512C-C](#) [SUCS1R54805BP](#) [SUCS32405BP](#) [SUCS62405BP](#) [SUCS61205BP](#)
[SUCS60505B](#) [SUCS32405C-C](#) [SUCS1R51205BP](#) [SUCS10243R3B](#) [SUCS101205B-G](#) [SUCS31205B](#) [SUCS30515C](#)
[SUCS10483R3BP](#) [SUCS100515C-C](#) [SUCS64812B](#) [SUCS3053R3BP](#) [SUCS1R52405B](#) [SUCS60515C-G](#)
[SUCS102415B](#) [SUCS1R52415C](#) [SUCS31212C-C](#) [SUCS3243R3C-G](#) [SUCS62405C-C](#) [SUCS34815BP](#)
[SUCS30512B](#) [SUCS64815BP](#) [SUCS101215C](#) [SUCS6053R3C](#) [SUCS1R51205B](#) [SUCS104815BP](#) [SUCS60512BP](#)
[SUCS3243R3BP-G](#) [SUCS1R52412B](#) [SUCS61212C-C](#) [SUCS62412C](#) [SUCS64805C-C](#) [SUCS62415C](#)
[SUCS104805C-C](#) [SUCS10483R3B](#) [SUCS102405B-G](#) [SUCS1R54812B](#) [SUCS104812C](#) [SUCS3483R3C-C](#)
[SUCS30505B](#) [SUCS1R5483R3C](#) [SUCS1R5053R3BP](#) [SUCS32415C-G](#) [SUCS101205C-C](#) [SUCS31205BP-G](#)
[SUCS1R5243R3BP](#) [SUCS10123R3BP](#) [SUCS100515C](#) [SUCS6483R3B](#) [SUCS6243R3B](#)



Компания «ЭлектроПласт» предлагает заключение долгосрочных отношений при поставках импортных электронных компонентов на взаимовыгодных условиях!

Наши преимущества:

- Оперативные поставки широкого спектра электронных компонентов отечественного и импортного производства напрямую от производителей и с крупнейших мировых складов;
- Поставка более 17-ти миллионов наименований электронных компонентов;
- Поставка сложных, дефицитных, либо снятых с производства позиций;
- Оперативные сроки поставки под заказ (от 5 рабочих дней);
- Экспресс доставка в любую точку России;
- Техническая поддержка проекта, помощь в подборе аналогов, поставка прототипов;
- Система менеджмента качества сертифицирована по Международному стандарту ISO 9001;
- Лицензия ФСБ на осуществление работ с использованием сведений, составляющих государственную тайну;
- Поставка специализированных компонентов (Xilinx, Altera, Analog Devices, Intersil, Interpoint, Microsemi, Aeroflex, Peregrine, Syfer, Eurofarad, Texas Instrument, Miteq, Cobham, E2V, MA-COM, Hittite, Mini-Circuits, General Dynamics и др.);

Помимо этого, одним из направлений компании «ЭлектроПласт» является направление «Источники питания». Мы предлагаем Вам помощь Конструкторского отдела:

- Подбор оптимального решения, техническое обоснование при выборе компонента;
- Подбор аналогов;
- Консультации по применению компонента;
- Поставка образцов и прототипов;
- Техническая поддержка проекта;
- Защита от снятия компонента с производства.



Как с нами связаться

Телефон: 8 (812) 309 58 32 (многоканальный)

Факс: 8 (812) 320-02-42

Электронная почта: org@eplast1.ru

Адрес: 198099, г. Санкт-Петербург, ул. Калинина, дом 2, корпус 4, литера А.