

DWG. NO.

SA94843

RBGT GROUNDING & RBMT MOUNTING TRACKS

THIS DRAWING IS A CONTROLLED DOCUMENT FOR SOURIAU USA, INC. IT IS SUBJECT TO CHANGE WITHOUT NOTIFICATION. CONTACT THE DOCUMENT CONTROL CENTER FOR THE LATEST REVISION.

PRO-E

THE INFORMATION CONTAINED IN THIS DRAWING IS CONFIDENTIAL AND MAY NOT BE DISCLOSED WITHOUT WRITTEN CONSENT FROM SOURIAU USA, INC.

SUPERSEDES: SE94843-5

| REV | DESCRIPTION | BY DATE | CHKD DATE |
|-----|-----------------------|--------------|--------------|
| U | REVISED PER ECN 12047 | RSK 10-09-13 | SDH 10-09-13 |
| T | REVISED PER ECN 11710 | RSK 05-02-12 | SDH 05-02-12 |
| S | REVISED PER ECN 11271 | VKP 11-15-10 | SDH 11-15-10 |
| R | REVISED PER ECN 7622 | JRD 09-20-02 | SDH 09-20-02 |

DRAWING TITLE

TRACKS, GROUNDING & MOUNTING

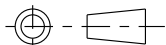
LINEAR MEASURE:  INCH [mm]

CAT NO. **RBGT _ & RBMT _ (SEE TABLE, SHT. 2)**

THIRD ANGLE PROJECTION

CAGE NO.: 09922

SIZE: A



CUSTOMER

SOURIAU

APPROVAL

| | | |
|--------|-----|----------|
| DRAWN: | VKP | 11-15-10 |
| CHKD : | SDH | 11-15-10 |
| DSGN : | JDA | 10-13-92 |
| MFG : | DH | 11-15-10 |
| QC : | DK | 11-15-10 |

TOLERANCES UNLESS OTHERWISE SPECIFIED

| No. OF PLACES | INCH [mm] |
|---------------|---------------|
| ONE PLACE | ±.1 [±3] |
| TWO PLACES | ±.02 [±0.5] |
| THREE PLACES | ±.010 [±0.25] |
| ANGLES ±1° | |

INTERPRET THIS DRAWING IN ACCORDANCE WITH ASME Y14.5M - 1994.

www.souriau.com

| | |
|--------------------|-----|
| DRAWING SCALE: 1:1 | |
| DRAWING NO. | REV |
| SA94843 | U |
| 1 OF 6 | |

DWG. NO.
SA94843

NOTES:

- GROUNDING TRACK ACCOMMODATES PIN CONTACTS PER MIL-C-39029/1-101. WITH A WIRE RANGE OF 24-22-20 AWG. USE INSERTION/REMOVAL TOOL PER MIL-I-81969/14C-11.

MATERIAL:

- STRAIN RELIEF GROMMET: SILICONE RUBBER, COLOR RED
- GROMMET BONDING: EPOXY
- GROUNDING MODULE BODY: GLASS FORTIFIED THERMOPLASTIC UL94V-0. COLOR BLUE
- GROUNDING AND MOUNTING TRACKS: 6063-T6 ALUMINUM
- GROUNDING RIVETS: ALUMINUM ALLOY
- GROUNDING SOCKET CONTACTS: BERYLLIUM COPPER
- CONTACT RETENTION CLIPS: BERYLLIUM COPPER
- SOCKET CONTACT SLEEVES: THERMOPLASTIC, LIQUID CRYSTAL POLYMER
- TERMINAL IDENTIFICATION STRIP: THERMOPLASTIC, UL94V-0, COLOR WHITE
- PROTECTIVE COATING: POLYURETHANE, COLOR OPTIONAL

FINISH:

- GROUNDING AND MOUNTING TRACKS: CHROMATE CONVERSION COATING PER MIL-C-81706, CLASS 3, METHOD C, COLOR GOLD. (REF: ALODINE 1200)
- GROUNDING SOCKET CONTACTS: 50 MICROINCHES [1.27 MICRONS] MIN. NICKEL ALL OVER. PIN CONTACT CURRENT BEARING SURFACE OVER-PLATED WITH 50 MICROINCHES [1.27 MICRONS] MIN. HARD GOLD.

| DESCRIPTION TABLE | | |
|---------------------|-----------------|------------|
| SOURIAU CATALOG NO. | (O.A LENGTH) | WEIGHT (g) |
| RBGT2 | 2.000 [50.80] | 17.5 |
| RBGT4 | 4.000 [101.60] | 35.0 |
| RBGT6 | 6.000 [152.40] | 52.5 |
| RBGT8 | 8.000 [203.20] | 70.0 |
| RBGT10 | 10.000 [254.00] | 87.5 |
| RBGT14 | 14.000 [355.60] | 122.5 |
| RBGT16 | 16.000 [406.40] | 140.0 |
| RBGT18 | 18.000 [457.20] | 157.5 |
| RBGT20 | 20.000 [508] | 175.0 |
| RBGT22 | 22.000 [558.80] | 192.5 |
| RBGT26 | 26.000 [660.40] | 227.5 |
| RBGT28 | 28.000 [711.20] | 245.0 |
| RBGT34 | 34.000 [863.60] | 297.5 |
| RBGT38 | 38.000 [965.20] | 332.5 |
| RBMT2 | 2.000 [50.80] | 6.25 |
| RBMT4 | 4.000 [101.60] | 12.5 |
| RBMT6 | 6.000 [152.40] | 18.75 |
| RBMT8 | 8.000 [203.20] | 25.0 |
| RBMT10 | 10.000 [254.00] | 31.25 |
| RBMT14 | 14.000 [355.60] | 43.75 |
| RBMT16 | 16.000 [406.40] | 50.0 |
| RBMT18 | 18.000 [457.20] | 56.25 |
| RBMT20 | 20.000 [508] | 62.5 |
| RBMT22 | 22.000 [558.80] | 68.75 |
| RBMT26 | 26.000 [660.40] | 81.25 |
| RBMT28 | 28.000 [711.20] | 87.5 |
| RBMT34 | 34.000 [863.60] | 106.25 |
| RBMT38 | 38.000 [965.20] | 118.75 |

| | | | |
|-----|-----------------------------|---------|-----------|
| --- | ALL REV. RECORDED ON SHT. 1 | --- | --- |
| REV | | BY DATE | CHKD DATE |

| | | | |
|---|----------------|---------------------|-----|
| DRAWING TITLE | | | |
| TRACKS, GROUNDING & MOUNTING | | | |
| RBGT _ & RBMT _ (SEE TABLE, SHT. 2) | | | |
| CAT NO. | SIZE: A | DRAWN: VKP 11-15-10 | |
| CAGE NO.: 09922 | SOURIAU | CHKD : SDH 11-15-10 | |
| CUSTOMER | | DSGN : JDA 10-13-92 | |
| | | MFG : DH 11-15-10 | |
| | | QC : DK 11-15-10 | |
| | | DRAWING SCALE: 1:1 | |
| INTERPRET THIS DRAWING IN ACCORDANCE WITH ASME Y14.5M - 1994. | | DRAWING NO. | REV |
| | | SA94843 U | |
| | | 2 OF 6 | |
| www.souriau.com | | | |

| | | |
|---------------------------------------|---------------|-----------|
| LINEAR MEASURE: | | INCH [mm] |
| THIRD ANGLE PROJECTION | | |
| TOLERANCES UNLESS OTHERWISE SPECIFIED | | |
| No. OF PLACES | INCH [mm] | |
| ONE PLACE | ±.1 [±3] | |
| TWO PLACES | ±.02 [±0.5] | |
| THREE PLACES | ±.010 [±0.25] | |
| ANGLES ±1° | | |

THIS DRAWING IS A CONTROLLED DOCUMENT FOR SOURIAU USA, INC. IT IS SUBJECT TO CHANGE WITHOUT NOTIFICATION. CONTACT THE DOCUMENT CONTROL CENTER FOR THE LATEST REVISION.

PRO-E

THE INFORMATION CONTAINED IN THIS DRAWING IS CONFIDENTIAL AND MAY NOT BE DISCLOSED WITHOUT WRITTEN CONSENT FROM SOURIAU USA, INC.

DWG. NO.

SA94843

PERFORMANCE CHARACTERISTICS

ELECTRICAL:

CONTACT RESISTANCE: IN ACCORDANCE WITH MIL-T-81714, PARA. 4.6.16.
 REF: MIL-STD-1344, METHOD 3004.
 SIZE 16-20: 45 MILLIVOLTS MAX. AT 7.5A WITH 20 AWG SILVER PLATED WIRE.

LOW LEVEL CONTACT RESISTANCE: IN ACCORDANCE WITH MIL-T-81714, PARA. 4.6.17.
 REF: MIL-STD-1344, METHOD 3002.
 SIZE 16-20: .009 OHMS MAX. WITH 20 AWG SILVER PLATED WIRE.

VOLTAGE STABILITY: 4 MILLIVOLT MAX. DIFFERENCE BETWEEN RECORDED HIGHEST AND LOWEST POTENTIAL DROP VALUES IN ACCORDANCE WITH MIL-T-81714, PARA. 4.6.18.

ENVIRONMENTAL:

FLUID IMMERSION: ALL MATERIALS ARE RESISTANT TO BMS3-11 (SKYDROL LD-4) AND MIL-H-5606 HYDRAULIC FLUIDS, AND MIL-L-7808 AND MIL-L-23699 LUBRICATING OILS.

HUMIDITY: IN ACCORDANCE WITH MIL-T-81714, PARA. 4.6.10.
 REF: MIL-STD-1344, METHOD 1002, TYPE II, (EXCEPT WITHOUT STEP 7b)

SALT SPRAY: 500 HOURS IN ACCORDANCE WITH MIL-T-81714, PARA. 4.6.12.
 REF: MIL-STD-1344, METHOD 1001, TEST CONDITION C.

VIBRATION (SINUSOIDAL): IN ACCORDANCE WITH MIL-T-81714, PARA. 4.6.8.1.
 REF: MIL-STD-202, METHOD 204, TEST CONDITION G.

VIBRATION (RANDOM): IN ACCORDANCE WITH MIL-T-81714, PARA. 4.6.8.2.
 REF: MIL-STD-1344, METHOD 2005, TEST CONDITION VI. LETTER J.

MECHANICAL (IMPACT) SHOCK: IN ACCORDANCE WITH MIL-T-81714, PARA. 4.6.9.
 REF: MIL-STD-1344, METHOD 2004, TEST CONDITION D.

THERMAL SHOCK: IN ACCORDANCE WITH MIL-T-81714, PARA. 4.6.5.
 REF: MIL-STD-1344, METHOD 1003, TEST CONDITION A, (EXCEPT TEMPERATURE EXTREMES ARE -65°C TO +150°C [-85°F TO +302°F]).

TEMPERATURE LIFE: 150°C [302°F] FOR 1000 HOURS IN ACCORDANCE WITH MIL-T-81714, PARA. 4.6.13.

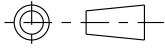
OZONE: IN ACCORDANCE WITH MIL-T-81714, PARA. 4.6.14.
 REF: MIL-STD-1344, METHOD 1007.


| | | | |
|-----|-----------------------------|---------|-----------|
| --- | ALL REV. RECORDED ON SHT. 1 | --- | --- |
| REV | DESCRIPTION | BY DATE | CHKD DATE |

DRAWING TITLE
TRACKS, GROUNDING & MOUNTING

CAT NO. **RBGT _ & RBMT _ (SEE TABLE, SHT. 2)**

CAGE NO.: 09922 SIZE: A

|  <p>TOLERANCES UNLESS OTHERWISE SPECIFIED</p> <table border="1"> <tr> <th>No. OF PLACES</th> <th>INCH [mm]</th> </tr> <tr> <td>ONE PLACE</td> <td>±.1 [±3]</td> </tr> <tr> <td>TWO PLACES</td> <td>±.02 [±0.5]</td> </tr> <tr> <td>THREE PLACES</td> <td>±.010 [±0.25]</td> </tr> <tr> <td colspan="2">ANGLES ±1°</td> </tr> </table> | No. OF PLACES | INCH [mm] | ONE PLACE | ±.1 [±3] | TWO PLACES | ±.02 [±0.5] | THREE PLACES | ±.010 [±0.25] | ANGLES ±1° | | <p>CUSTOMER</p> <p>SOURIAU</p> <p>www.souriau.com</p> | <p>APPROVAL</p> <table border="1"> <tr> <td>DRAWN:</td> <td>VKP</td> <td>11-15-10</td> </tr> <tr> <td>CHKD :</td> <td>SDH</td> <td>11-15-10</td> </tr> <tr> <td>DSGN :</td> <td>JDA</td> <td>10-13-92</td> </tr> <tr> <td>MFG :</td> <td>DH</td> <td>11-15-10</td> </tr> <tr> <td>QC :</td> <td>DK</td> <td>11-15-10</td> </tr> </table> <p>DRAWING SCALE: 1:1</p> <table border="1"> <tr> <td>DRAWING NO.</td> <td>REV</td> </tr> <tr> <td>SA94843</td> <td>U</td> </tr> </table> <p>3 OF 6</p> | DRAWN: | VKP | 11-15-10 | CHKD : | SDH | 11-15-10 | DSGN : | JDA | 10-13-92 | MFG : | DH | 11-15-10 | QC : | DK | 11-15-10 | DRAWING NO. | REV | SA94843 | U |
|--|---------------|---------------|-----------|----------|------------|-------------|--------------|---------------|------------|--|---|--|--------|-----|----------|--------|-----|----------|--------|-----|----------|-------|----|----------|------|----|----------|-------------|-----|---------|---|
| | No. OF PLACES | INCH [mm] | | | | | | | | | | | | | | | | | | | | | | | | | | | | | |
| | ONE PLACE | ±.1 [±3] | | | | | | | | | | | | | | | | | | | | | | | | | | | | | |
| | TWO PLACES | ±.02 [±0.5] | | | | | | | | | | | | | | | | | | | | | | | | | | | | | |
| | THREE PLACES | ±.010 [±0.25] | | | | | | | | | | | | | | | | | | | | | | | | | | | | | |
| ANGLES ±1° | | | | | | | | | | | | | | | | | | | | | | | | | | | | | | | |
| DRAWN: | VKP | 11-15-10 | | | | | | | | | | | | | | | | | | | | | | | | | | | | | |
| CHKD : | SDH | 11-15-10 | | | | | | | | | | | | | | | | | | | | | | | | | | | | | |
| DSGN : | JDA | 10-13-92 | | | | | | | | | | | | | | | | | | | | | | | | | | | | | |
| MFG : | DH | 11-15-10 | | | | | | | | | | | | | | | | | | | | | | | | | | | | | |
| QC : | DK | 11-15-10 | | | | | | | | | | | | | | | | | | | | | | | | | | | | | |
| DRAWING NO. | REV | | | | | | | | | | | | | | | | | | | | | | | | | | | | | | |
| SA94843 | U | | | | | | | | | | | | | | | | | | | | | | | | | | | | | | |
| INTERPRET THIS DRAWING IN ACCORDANCE WITH ASME Y14.5M - 1994. | | | | | | | | | | | | | | | | | | | | | | | | | | | | | | | |

LINEAR MEASURE:  INCH [mm]

THIRD ANGLE PROJECTION

THIS DRAWING IS A CONTROLLED DOCUMENT FOR SOURIAU USA, INC. IT IS SUBJECT TO CHANGE WITHOUT NOTIFICATION. CONTACT THE DOCUMENT CONTROL CENTER FOR THE LATEST REVISION.

PRO-E

THE INFORMATION CONTAINED IN THIS DRAWING IS CONFIDENTIAL AND MAY NOT BE DISCLOSED WITHOUT WRITTEN CONSENT FROM SOURIAU USA, INC.

DWG. NO.

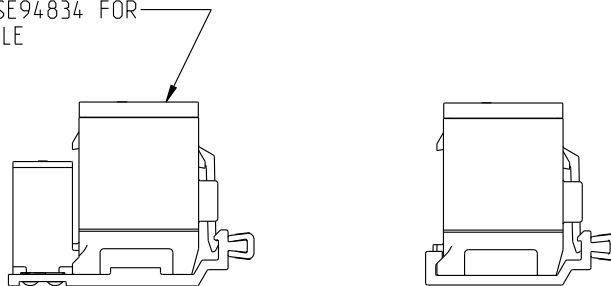
SA94843

PERFORMANCE CHARACTERISTICS

MECHANICAL:

- MAGNETIC PERMEABILITY:** ALL MATERIALS DO NOT EXHIBIT A RELATIVE MAGNETIC PERMEABILITY OF GREATER THAN 2 IN ACCORDANCE WITH MIL-T-81714, PARA. 4.6.15. REF: MIL-STD-1344, METHOD 3006.
- MAINTENANCE AGING:** IN ACCORDANCE WITH MIL-T-81714, PARA. 4.6.3.
- CONTACT INSERTION/REMOVAL FORCE:** 10 LBS [44,4N] MAX. IN ACCORDANCE WITH MIL-T-81714, PARA.4.6.3
- CONTACT RETENTION:** 20 LBS [88,9N] MIN. IN ACCORDANCE WITH MIL-T-81714, PARA. 4.6.4. AXIAL DISPLACEMENT DOES NOT EXCEED .012 [0,30]. REF: MIL-STD-1344, METHOD 2007.
- PROBE DAMAGE:** IN ACCORDANCE WITH MIL-T-81714, PARA. 4.6.2.
- RETENTION SYSTEM FLUID IMMERSION:** IN ACCORDANCE WITH MIL-T-81714, PARA. 4.6.23.
- INTERNAL CONTACT DURABILITY:** 100 CYCLES OF MATING AND UNMATING TO DEPTH OF MECHANICAL AND ELECTRICAL ENGAGEMENT IN ACCORDANCE WITH MIL-T-81714, PARA. 4.6.19.
- OVERSIZE PIN CONTACT PROTECTION:** GROUNDING MODULE DESIGNED TO PREVENT ENTRANCE OF AN OVERSIZE TEST PIN OF Ø.070 [1,78] IN ACCORDANCE WITH MIL-T-81714, PARA. 4.6.20.
- CONTACT WALKOUT:** IN ACCORDANCE WITH MIL-T-81714, PARA. 4.6.22. REF: MIL-STD-1549.

SEE DRAWING SE94834 FOR
FEEDBACK MODULE



FEEDBACK MODULE INSTALLED IN
GROUNDING AND MOUNTING TRACKS
SCALE 1:1

| | | | |
|-----|-----------------------------|---------|-----------|
| --- | ALL REV. RECORDED ON SHT. 1 | --- | --- |
| REV | DESCRIPTION | BY DATE | CHKD DATE |

| | | | |
|---|--|---------------------|--|
| DRAWING TITLE | | | |
| TRACKS, GROUNDING & MOUNTING | | | |
| CAT NO. RBGT _ & RBMT _ (SEE TABLE, SHT. 2) | | | |
| CAGE NO.: 09922 | | SIZE: A | |
| CUSTOMER | | SOURIAU | |
| | | | |
| INTERPRET THIS DRAWING IN ACCORDANCE WITH ASME Y14.5M - 1994. | | APPROVAL | DRAWN: VKP 11-15-10 CHKD : SDH 11-15-10 DSGN : JDA 10-13-92 MFG : DH 11-15-10 QC : DK 11-15-10 |
| | | DRAWING SCALE: 1:1 | |
| | | DRAWING NO. SA94843 | |
| | | REV U | |
| | | 4 OF 6 | |

| | | |
|---------------------------------------|---------------|-----------|
| LINEAR MEASURE: | | INCH [mm] |
| THIRD ANGLE PROJECTION | | |
| | | |
| TOLERANCES UNLESS OTHERWISE SPECIFIED | | |
| No. OF PLACES | INCH [mm] | |
| ONE PLACE | ±.1 [±3] | |
| TWO PLACES | ±.02 [±0.5] | |
| THREE PLACES | ±.010 [±0.25] | |
| ANGLES ±1° | | |

THIS DRAWING IS A CONTROLLED DOCUMENT FOR SOURIAU USA, INC. IT IS SUBJECT TO CHANGE WITHOUT NOTIFICATION. CONTACT THE DOCUMENT CONTROL CENTER FOR THE LATEST REVISION.

PRO-E

THE INFORMATION CONTAINED IN THIS DRAWING IS CONFIDENTIAL AND MAY NOT BE DISCLOSED WITHOUT WRITTEN CONSENT FROM SOURIAU USA, INC.

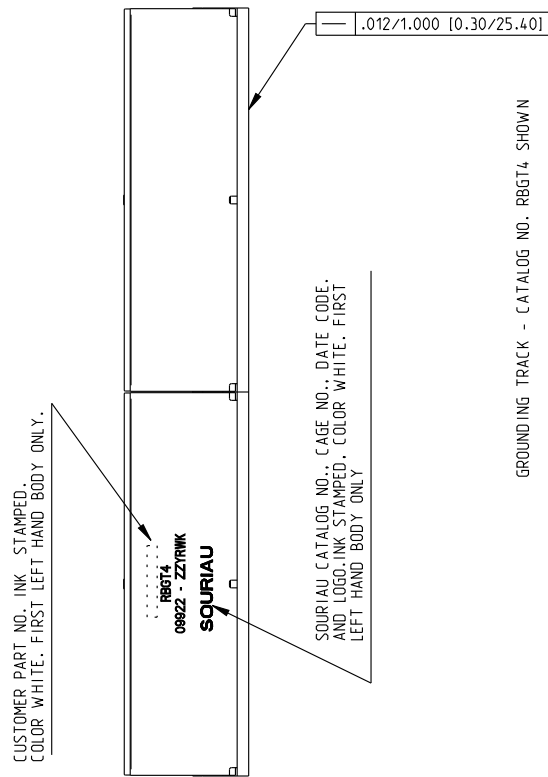
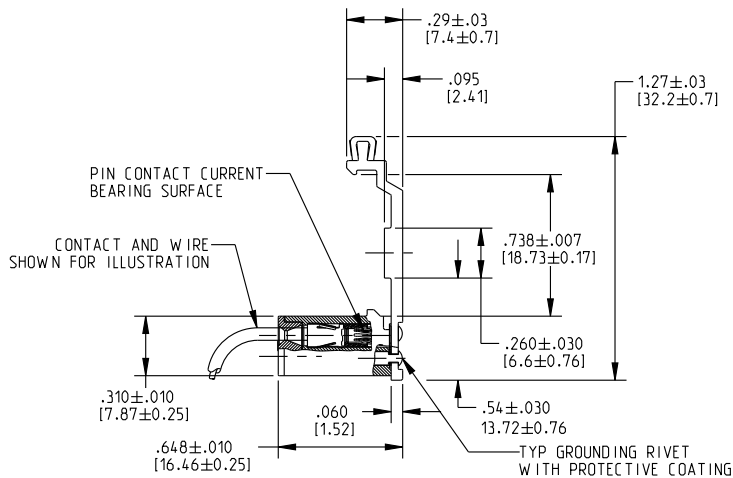
DWG. NO.

SA94843

THIS DRAWING IS A CONTROLLED DOCUMENT FOR SOURIAU USA, INC. IT IS SUBJECT TO CHANGE WITHOUT NOTIFICATION. CONTACT THE DOCUMENT CONTROL CENTER FOR THE LATEST REVISION.

PRO-E

THE INFORMATION CONTAINED IN THIS DRAWING IS CONFIDENTIAL AND MAY NOT BE DISCLOSED WITHOUT WRITTEN CONSENT FROM SOURIAU USA, INC.



GROUNDING TRACK - CATALOG NO. RBGT4 SHOWN

| | | | |
|-----|-----------------------------|---------|-----------|
| --- | ALL REV. RECORDED ON SHT. 1 | --- | --- |
| REV | DESCRIPTION | BY DATE | CHKD DATE |

DRAWING TITLE
TRACKS, GROUNDING & MOUNTING

CAT NO. **RBGT & RBMT (SEE TABLE, SHT. 2)**

CAGE NO.: 09922 SIZE: A

| | | |
|---------------------------------------|------------------|-----------|
| LINEAR MEASURE: | INCH [mm] | INCH [mm] |
| THIRD ANGLE PROJECTION | | |
| TOLERANCES UNLESS OTHERWISE SPECIFIED | | |
| No. OF PLACES | INCH [mm] | |
| ONE PLACE | ±.1 [±3] | |
| TWO PLACES | ±.02 [±0.5] | |
| THREE PLACES | ±.010 [±0.25] | |
| ANGLES ±1° | | |

CUSTOMER

INTERPRET THIS DRAWING IN ACCORDANCE WITH ASME Y14.5M - 1994.

SOURIAU

www.souriau.com

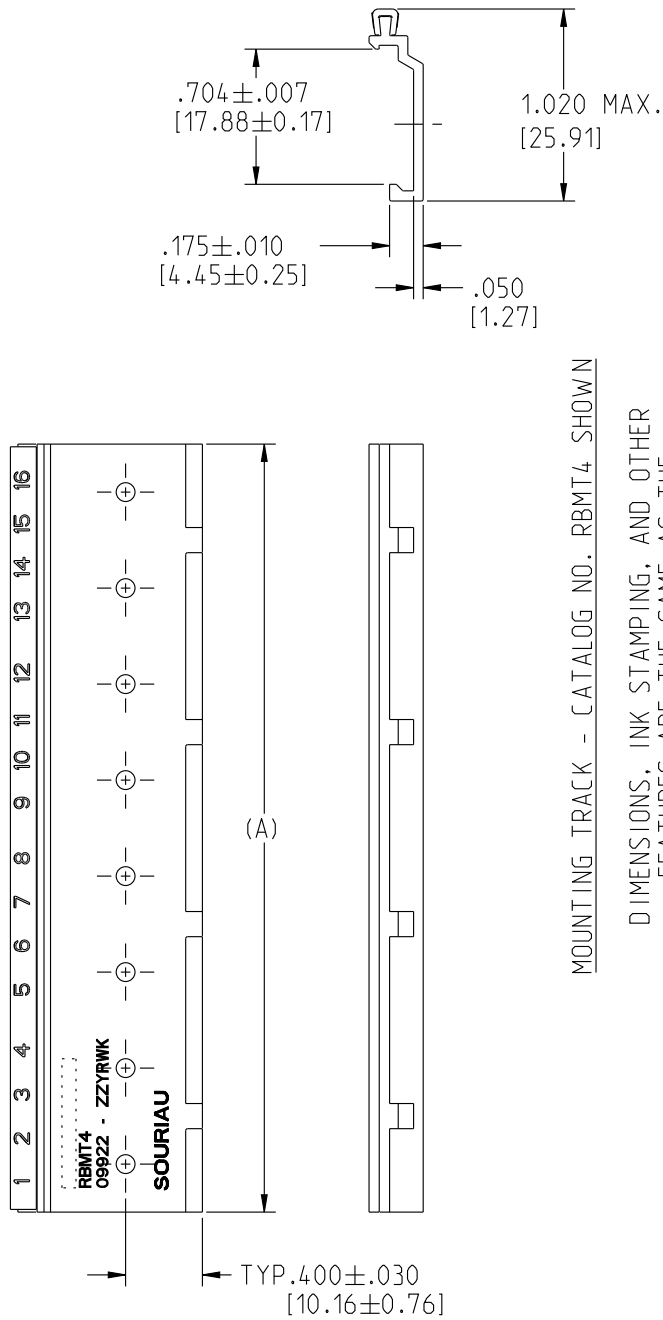
| | | | |
|----------------|--------|-----|----------|
| APPROVAL | DRAWN: | VKP | 11-15-10 |
| | CHKD : | SDH | 11-15-10 |
| | DSGN : | JDA | 10-13-92 |
| | MFG : | DH | 11-15-10 |
| | QC : | DK | 11-15-10 |
| DRAWING SCALE: | | 1:1 | |
| DRAWING NO. | | REV | |
| SA94843 | | U | |
| 5 OF 6 | | | |

THIS DRAWING IS A CONTROLLED DOCUMENT FOR SOURIAU USA, INC. IT IS SUBJECT TO CHANGE WITHOUT NOTIFICATION. CONTACT THE DOCUMENT CONTROL CENTER FOR THE LATEST REVISION.

PRO-E

THIS DRAWING IS CONFIDENTIAL AND MAY NOT BE DISCLOSED WITHOUT WRITTEN CONSENT FROM SOURIAU USA, INC.

DWG. NO.
SA94843



MOUNTING TRACK - CATALOG NO. RBMT4 SHOWN

DIMENSIONS, INK STAMPING, AND OTHER FEATURES ARE THE SAME AS THE GROUNDING TRACK EXCEPT AS SHOWN.

| SOURIAU CATALOG NO. | BOEING PART NO. | MOUNTING TRACK | | FEEDBACK MODULES ACCOMMODATED SEE DWG. SE94834 |
|---------------------|-----------------|---------------------|-----------------|--|
| | | SOURIAU CATALOG NO. | BOEING PART NO. | |
| RBGT2 | S280W 555-502 | RBMT2 | S280W 555-602 | 2 |
| RBGT4 | S280W 555-504 | RBMT4 | S280W 555-604 | 4 |
| RBGT6 | S280W 555-506 | RBMT6 | S280W 555-606 | 6 |
| RBGT8 | S280W 555-508 | RBMT8 | S280W 555-608 | 8 |
| RBGT10 | S280W 555-510 | RBMT10 | S280W 555-610 | 10 |
| RBGT14 | S280W 555-514 | RBMT14 | S280W 555-614 | 14 |
| RBGT16 | S280W 555-516 | RBMT16 | S280W 555-616 | 16 |
| RBGT18 | S280W 555-518 | RBMT18 | S280W 555-618 | 18 |
| RBGT20 | S280W 555-520 | RBMT20 | S280W 555-620 | 20 |
| RBGT22 | S280W 555-522 | RBMT22 | S280W 555-622 | 22 |
| RBGT26 | S280W 555-526 | RBMT26 | S280W 555-626 | 26 |
| RBGT28 | S280W 555-528 | RBMT28 | S280W 555-628 | 28 |
| RBGT34 | S280W 555-534 | RBMT34 | S280W 555-634 | 34 |
| RBGT38 | S280W 555-538 | RBMT38 | S280W 555-638 | 38 |

| | | | |
|-----|-----------------------------|---------|-----------|
| --- | ALL REV. RECORDED ON SHT. 1 | --- | --- |
| REV | ECN NUMBER | BY DATE | CHKD DATE |

DRAWING TITLE
TRACKS, GROUNDING & MOUNTING

CAT NO. **RBGT _ & RBMT _ (SEE TABLE, SHT. 2)**

CAGE NO.: 09922 SIZE: A

CUSTOMER

INTERPRET THIS DRAWING IN ACCORDANCE WITH ASME Y14.5M - 1994.

SOURIAU

www.souriau.com

| | | |
|--------|-----|----------|
| DRAWN: | VKP | 11-15-10 |
| CHKD : | SDH | 11-15-10 |
| DSGN : | JDA | 10-13-92 |
| MFG : | DH | 11-15-10 |
| QC : | DK | 11-15-10 |

| | |
|--------------------|-----|
| DRAWING SCALE: 1:1 | |
| DRAWING NO. | REV |
| SA94843 | U |

| | |
|--------|--|
| 6 OF 6 | |
|--------|--|

LINEAR MEASURE: INCH [mm]

THIRD ANGLE PROJECTION

TOLERANCES UNLESS OTHERWISE SPECIFIED

| No. OF PLACES | INCH [mm] |
|---------------|---------------|
| ONE PLACE | ±.1 [±3] |
| TWO PLACES | ±.02 [±0.5] |
| THREE PLACES | ±.010 [±0.25] |

ANGLES ±1°



Компания «ЭлектроПласт» предлагает заключение долгосрочных отношений при поставках импортных электронных компонентов на взаимовыгодных условиях!

Наши преимущества:

- Оперативные поставки широкого спектра электронных компонентов отечественного и импортного производства напрямую от производителей и с крупнейших мировых складов;
- Поставка более 17-ти миллионов наименований электронных компонентов;
- Поставка сложных, дефицитных, либо снятых с производства позиций;
- Оперативные сроки поставки под заказ (от 5 рабочих дней);
- Экспресс доставка в любую точку России;
- Техническая поддержка проекта, помощь в подборе аналогов, поставка прототипов;
- Система менеджмента качества сертифицирована по Международному стандарту ISO 9001;
- Лицензия ФСБ на осуществление работ с использованием сведений, составляющих государственную тайну;
- Поставка специализированных компонентов (Xilinx, Altera, Analog Devices, Intersil, Interpoint, Microsemi, Aeroflex, Peregrine, Syfer, Eurofarad, Texas Instrument, Miteq, Cobham, E2V, MA-COM, Hittite, Mini-Circuits, General Dynamics и др.);

Помимо этого, одним из направлений компании «ЭлектроПласт» является направление «Источники питания». Мы предлагаем Вам помощь Конструкторского отдела:

- Подбор оптимального решения, техническое обоснование при выборе компонента;
- Подбор аналогов;
- Консультации по применению компонента;
- Поставка образцов и прототипов;
- Техническая поддержка проекта;
- Защита от снятия компонента с производства.



Как с нами связаться

Телефон: 8 (812) 309 58 32 (многоканальный)

Факс: 8 (812) 320-02-42

Электронная почта: org@eplast1.ru

Адрес: 198099, г. Санкт-Петербург, ул. Калинина, дом 2, корпус 4, литера А.