

# TCS3200EVM

# Quick Installation TAOS TEXAS ADVANCED OPTOELECTRONIC SOLUTIONS®

## SOFTWARE INSTALLATION

On most PCs, installation will automatically start when the CD-ROM is inserted into the drive. If the installation does not begin:

- 1 Double-click the **Setup.exe** file on the CD-ROM, or
- 2 Click Start -> Click Run -> Type D:\taos\setup and press Enter. **IMPORTANT:** Use the appropriate drive letter in the above command to install the software. CD-ROMs are commonly D:

The installation program will guide you through the product installation.

The TCS3200EVM host application software is loaded, followed by the Parallax BASIC Stamp Editor, followed by the USB serial port drivers. Note that you will have the option to cancel the installation of the Parallax BASIC Stamp Editor, if desired. This application does not affect the operation of the EVM.

## USB DRIVER INSTALLATION

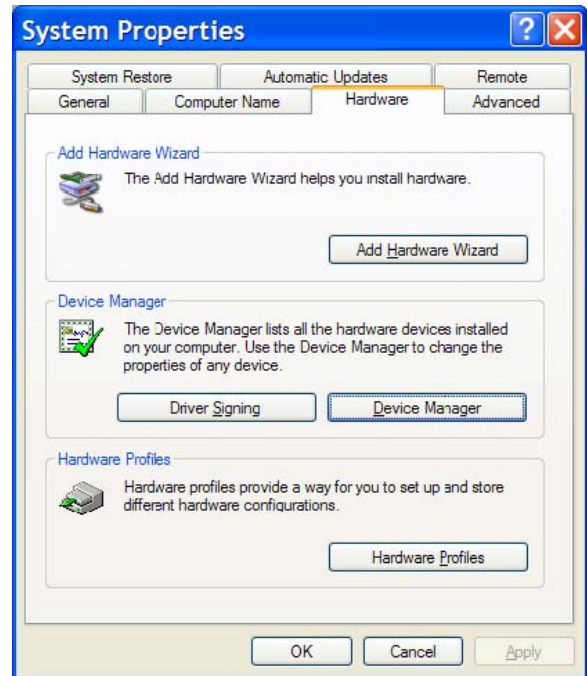
Installation of the USB virtual COM port (VCP) drivers should take place automatically during the software setup. If the install needs to be performed manually, run the file "USBDriverInstallerV2.0.0.exe" found in the Parallax directory on the CD.

For more information or to download the driver, visit the Parallax web site at:

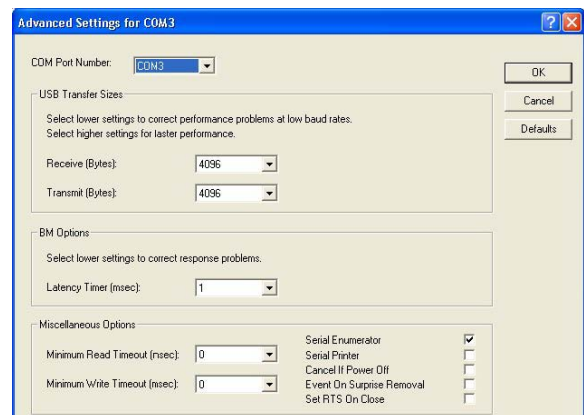
[http://www.parallax.com/html\\_pages/downloads/software/ftdi\\_drivers.asp](http://www.parallax.com/html_pages/downloads/software/ftdi_drivers.asp)

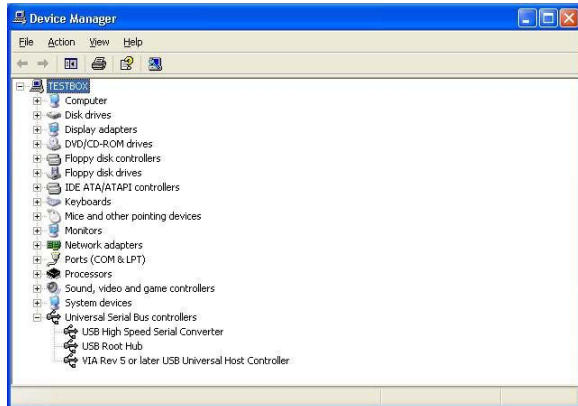
Using the enclosed cable, plug the mini-B connector into the EVM module. Using the other end of the cable, plug the USB A-connector into a USB port on the computer. The USB VCP driver should load automatically.

To quickly check to see if the USB driver was installed properly:

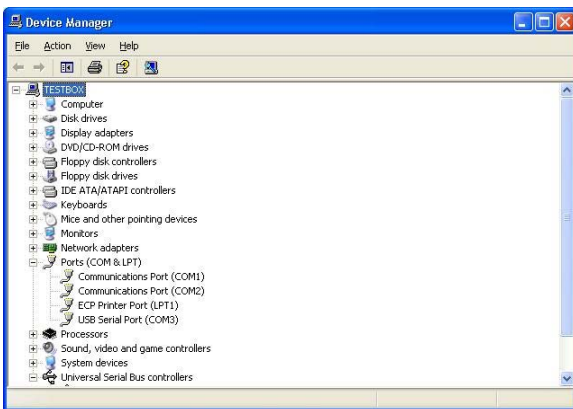


- 1 Go to the 'Control Panel' and double-click the 'System' icon. Select the 'Hardware' tab at the properly top and click the 'Device Manager' button in the middle of dialog.
- 2 Scroll down to "Universal Serial Bus Controller" and expand the section by clicking on the adjacent "+". A **USB High Speed Serial Converter** device should appear. Close the "Device Manager" window, and execute the EVM software.





3. To verify that the COM port was properly configured, scroll up to the "Ports (COM & LPT)"



section and expand by clicking on the adjacent "+" icon.

4. The port will be listed as "USB Serial Port (COMx)" as shown above (note that the COM port number may differ from the image above).

## TROUBLESHOOTING

Some installations may experience occasional connection problems that can be corrected through the virtual com port (VCP) driver properties. The following steps should correct these connection problems.

- 1 Click Start, Control Panel
- 2 Double-click on the "System" icon.
- 3 Click on the "Hardware" tab.
- 4 Click on the "Device Manager" button.
- 5 Expand the "Ports (COM & LPT)" tree by clicking on the "+" icon.
- 6 Right-click on the USB serial port, then click "Properties" from the pop-up menu.
- 7 Click on the "Port Settings" tab, then click the "Advanced..." button.
- 8 Change the value of the "Latency Timer" under "BM Options" to 1 using the drop-down list.

## HARDWARE CONFIGURATION

The TCS3200-DB daughterboard must be assembled to the motherboard before the EVM can be used. For detailed assembly instructions, please refer to the document "TCS3200-db\_doc.pdf" in the root directory of the CD. Follow the "Getting Started" section, up to the bottom of the left-most column of the first page. Please note that you do not need to enter the program shown in this document into the BASIC Stamp; it already comes programmed with the application necessary to work with the EVM host software.

After the daughterboard and motherboard is assembled, plug in the USB cable and run the host application software. To run the host application:

- 1 Click Start, All Programs, TCS3200EVM, TCS3200 Color Sensor EVM.
- 2 The host application software will check all the available COM ports, up to port 16, on the machine and try to find the EVM.

Note: to change the COM port number of the FTDI VCP Driver:

- 1 Click Start, Control Panel
- 2 Double-click on the "System" icon.
- 3 Click on the "Hardware" tab.
- 4 Click on the "Device Manager" button.
- 5 Expand the "Ports (COM & LPT)" tree by clicking on the "+" icon.
- 6 Right-click on the USB serial port that you want to change, then click "Properties" from the pop-up menu.
- 7 Click on the "Port Settings" tab, then click the "Advanced..." button.
- 8 Select a different COM port number (1-16) from the drop-down list at the top of the dialog box.

1 When the EVM is found, you will be prompted to perform a white calibration. This is necessary to normalize the RGB values. Place the EVM on a white surface, with all four standoffs squarely resting on the surface. Click the OK button to perform the white calibration.

- 2 The EVM should now be ready to use.
- 3 Please consult the ReadMe.txt file in the root directory on the CD for more information. For more information on the host application, please consult the Help file.

For more information on the TCS3200: <http://www.taosinc.com/contactus.asp>



Компания «ЭлектроПласт» предлагает заключение долгосрочных отношений при поставках импортных электронных компонентов на взаимовыгодных условиях!

Наши преимущества:

- Оперативные поставки широкого спектра электронных компонентов отечественного и импортного производства напрямую от производителей и с крупнейших мировых складов;
- Поставка более 17-ти миллионов наименований электронных компонентов;
- Поставка сложных, дефицитных, либо снятых с производства позиций;
- Оперативные сроки поставки под заказ (от 5 рабочих дней);
- Экспресс доставка в любую точку России;
- Техническая поддержка проекта, помощь в подборе аналогов, поставка прототипов;
- Система менеджмента качества сертифицирована по Международному стандарту ISO 9001;
- Лицензия ФСБ на осуществление работ с использованием сведений, составляющих государственную тайну;
- Поставка специализированных компонентов (Xilinx, Altera, Analog Devices, Intersil, Interpoint, Microsemi, Aeroflex, Peregrine, Syfer, Eurofarad, Texas Instrument, Miteq, Cobham, E2V, MA-COM, Hittite, Mini-Circuits, General Dynamics и др.);

Помимо этого, одним из направлений компании «ЭлектроПласт» является направление «Источники питания». Мы предлагаем Вам помощь Конструкторского отдела:

- Подбор оптимального решения, техническое обоснование при выборе компонента;
- Подбор аналогов;
- Консультации по применению компонента;
- Поставка образцов и прототипов;
- Техническая поддержка проекта;
- Защита от снятия компонента с производства.



#### Как с нами связаться

**Телефон:** 8 (812) 309 58 32 (многоканальный)

**Факс:** 8 (812) 320-02-42

**Электронная почта:** [org@eplast1.ru](mailto:org@eplast1.ru)

**Адрес:** 198099, г. Санкт-Петербург, ул. Калинина, дом 2, корпус 4, литера А.