

Manual Switches

AML51 Series

Buttons/Lens for Switches and Indicators

AML51 PUSHBUTTON ORDER GUIDE (All possible color combinations may not be available.)

For Incandescent or non-lighted display switches and pushbutton style indicators.

AML51-C	10	R	—
For AML11, 21, 31 switches and AML41 indicators: Pushbutton Style	Display Legend/Type	Full Color or 1st Color Split	2nd Color Split
 AML51-C  AML51-F  AML51-G  AML51-A  AML51-H  AML51-N*  AML51-B*  AML51-E*  AML51-M*  AML51-R*	Transmitted Color 10 No legend 20 With legend on cap. Transmitted Color (Clear cap and color insert) 11 No legend 21 With legend on insert Dead Front (Smoky gray cap and color insert) 30 No legend 40 With legend on insert ****Projected Color (White cap and color insert) 50 No legend 60 With legend on cap	R Red Y Yellow G Green B Blue W**** White K*** Black L*** Gray A** Amber	R Red Y Yellow G Green B Blue W**** White K*** Black L*** Gray A** Amber
For AML41D indicators only:			
 AML51-D			

Example: **AML51-C10R**
Square full color button; with transmitted color, no legend; red.

**Available with transmitted color and dead front only.
 ***Black and gray not recommended for lighted display.
 †AML51-N buttons not available with Display/Legend Types 10 and 20.
 Note: Dimensions include the .060 in bezel.

* Available with transmitted color (10 or 20) only.
 **** Insert is clear for projected color when "W" is used.

AML51 LENS ORDER GUIDE (All possible color combinations may not be available.)

For incandescent display AML41J, K, and L lens style indicators only.

AML51-J	10	R		
Lens style	Display/Legend Type	Full Color or 1st Color Split	2nd Color Split	3rd Color Split
 AML51-J  AML51-K  AML51-L	Transmitted Color 10 No legend 20 With legend Transmitted Color (Clear cap and color insert) 11 No legend 21 With legend Dead Front (Smoky gray cap and color insert) 30 No legend 40 With legend ****Projected Color (White cap and color insert) 50 No legend 60 With legend	R Red Y Yellow G Green B Blue W**** White A** Amber	R Red Y Yellow G Green B Blue W**** White A** Amber	R Red Y Yellow G Green B Blue W**** White A** Amber

AML51 lens buttons provide added display area by snapping onto and covering the bezel of AML41J, K, and L indicators. They do not fit other indicators or switches.

Example: **AML51-J10R**
Rectangular lens type button; full color; transmitted color, no legend; red.

HOW TO ORDER BUTTON LEGENDS

When specifying legended buttons, submit a legend order sheet to cover each listing. To insure proper legend orientation, AML housings (when viewed from the panel front) should have the "MICRO SWITCH" identification facing UP on square devices and UP or to the LEFT on rectangular.

Button legend order sheets are shown on the following pages. Reproduce them on your office copier.

Legend Sheet	Form No.
AML51 Pushbuttons	FO-63394
AML51 Lens buttons	FO-63395
AML52 Pushbuttons	FO-63504
AML53 Paddle switch covers	FO-63567
AML55 Paddle switch covers	FO-63565
AML54 Rockers	FO-63566
AML56 Rockers	FO-63564

** Not available with projected color.
 **** Insert is clear for projected color when "W" is used.

Manual Switches

Buttons for Switches and Indicators

AML52 BUTTON ORDER GUIDE (All possible color combinations may not be available.)

For AML12, AML22 (w/o light pipe), AML32, AML42 LED display.

AML52-N

10

R

Button Type
<p>For LED Devices AML52-C</p>  <p>AML52-A*</p> 
<p>For AML32 Neon Devices AML52-N</p> 

Display/Legend Type
<p>Transmitted Color</p> <p>10 No Legend</p> <p>20 With Legend</p>

Button Color
R Red
Y Yellow
G Green
B Blue
W White
K Black
A Amber
L Gray

Examples:

AML52-N10R

Rectangular full screen; for use on neon power switch with transmitted color, no legend; red button.

AML52-C10K

Square full screen; for use with LED device; transmitted color, no legend; black button.

AML 52/57 Pushbutton Legend Sheet/Product Specification for L.E.D. & Neon Button

Account No _____ Page _____ of _____

Catalog Listing
AML52 —
 Customer P.O. No. _____ Customer Dwg. No. _____
 MICRO SWITCH Sales Order _____ Line Number _____ Schedule No. _____

Customer: _____
 Address: _____
 _____ (city) _____ (state) _____

LEGEND ORDER GUIDE												
Button: Type Orientation	Figure NO	Max Lines			Max Characters			5/16	13/64	5/16	5/16	
		5/64	7/64	9/64	5/64	7/64	9/64					
	1	3	2	1	1	1	1	7	5	5	3	1
	2	3	2	1	1	1	1	7	5	5	3	1
	3	1	1	0	0	0	0	12	10	0	0	0
	4	1	1	0	0	0	0	12	10	0	0	0
	5	3	2	1	1	1	1	7	5	4	3	1
	6	3	2	1	1	1	1	7	5	4	3	1

Instructions

- Fill in appropriate catalog listing - one listing/sheet.
- Check proper figure #, Type size, type color.
- Fill in quantity required.
- Indicate legends desired — Do not exceed maximums shown in legend order guide.

Note

- For Proper Legend Orientation, AML housings (when viewed from front of panel) should have "MICRO SWITCH" logo oriented "UP" on square devices and "UP" or to the "LEFT" on rectangular devices.
- Please use black ink in filling out this form to help us process your order.

Standard Legend Placement

- Transmitted Color — Legend on outer shell (Button)
- Figures 3 and 4 not applicable for AML57 listings

LEGEND ORDER CHART

Customer Part NO	Fig NO	Type Size			Ink Color	Button Qty	Legend Description					
		5/64	7/64	9/64			13/64	5/16	Sequence: 1st Line	2nd Line	3rd Line	

Sheet Prepared By: _____ (Signature) _____ (Date)

Modified Gothic lettering (A thru Z), numerals (0 thru 9) and Symbols below available in 5/64, 7/64, 9/64, 13/64 and 5/16.		A3		Modified Gothic	
·	,	:	!	?	'
\$	¢	#	%	o	+
→	↖	↙	↘	↗	↚
1/3	2/3	1/4	2/4	3/4	∞
/	()	*	&		

SPECIAL LEGENDS

NOTE: Use this area to show special Legend Locations or Configurations NOT shown above. NON-STANDARD legends will involve additional charges and increased delivery time.

Fig. "A"	Fig. "B"
----------	----------

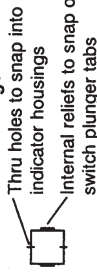
AML Pushbutton Legend Sheet/Product Specification

Account NO 126 - 284 Page ___ of ___

LEGEND ORDER GUIDE

Button: Type Orientation	Figure NO	Max Lines/Area				Max Characters/Line							
		5/64	7/64	9/64	13/64	5/16	5/64	7/64	9/64	13/64	5/16		
A*B PR	1	4*3	3*2	2*1	1*1	7*5	5*4	5*3	3*2	1*1	5*4	3*2	1*1
C	2	4*3	3*2	2*1	1*1	7*5	5*4	5*3	3*2	1*1	7*5	5*4	3*2
D	3	1*1	1*1	1*1	0*0	7*5	5*4	5*3	3*2	1*1	7*5	5*4	3*2
E,H*	4	4*3	3*2	2*1	1*1	11*10	9*8	8*7	5*3	3*3	11*10	9*8	8*7
E,H*	5	6*6	4*4	3*3	2*2	7*5	5*4	5*3	3*2	1*1	7*5	5*4	3*2
F	6	4*3	3*2	2*1	1*1	11*10	9*8	8*7	5*3	3*3	11*10	9*8	8*7
F	7	6*6	4*4	3*3	2*2	7*5	5*4	5*3	3*2	1*1	7*5	5*4	3*2
G,N	8	1*1	1*1	1*1	0*0	11*10	9*8	8*7	5*3	3*3	11*10	9*8	8*7
M	9	5*0	4*0	3*0	2*0	8*0	6*0	6*0	3*0	1*0	8*0	6*0	3*0

Definitions of Markings



Standard Legend Placement -

- Use special legends sec. for other placements
- 1. Transmitted Color — Legend on outer shell (Button)
- 2. Dead Front - Legend on Insert
- 3. Projected Color - Legend on outer shell (Button)
- 4. Transmitted color with clear cap legend on insert

LEGEND ORDER CHART

Customer Part No	Fig No	Type Size		Ink Color		But- ton Qty	Legend Order Chart											
		5/64	7/64	9/64	13/64		5/16	Black	White	1st Line	2nd Line	3rd Line	4th Line	5th Line	6th Line			

FO-86394-K

Catalog Listing
AML51 —
Customer P.O. No. _____ Customer Dwg. No. _____

MICRO SWITCH Sales Order _____ Line Number _____ Schedule No. _____

Customer: _____

Address: _____ (city) _____ (state) _____

Instructions

- Fill in appropriate catalog listing - one listing/sheet.
- Check proper figure #, Type size, Type color.
- Fill in quantity required.
- Indicate legends desired — Do not exceed maximums shown in legend order guide.

Note

- For Proper Legend Orientation, AML housings (when viewed from front of panel) should have "MICRO SWITCH" logo oriented "UP" on square devices and "UP" or to the "LEFT" on rectangular devices.
- Please use black ink in filling out this form to help us process your order.
- * INSERT ONLY ON STYLE A & H BUTTON

Modified Gothic lettering (A thru Z), numerals (0 thru 9) and Symbols below available in 5/64, 7/64, 9/64, 13/64 and 5/16.

A3
Modified Gothic

STANDARD SYMBOLS AVAILABLE

.	:	;	!	?	'	—	"	/	()	*	&
\$	¢	#	%	0	+	-	±	÷	x	=	≠	>
→	↔	↓	↙	↘	↖	↗	↻	↺	↻	↺	∞	<

SPECIAL LEGENDS
NOTE: Use this area to show special Legend Locations or Configurations NOT shown to the left. NON-STANDARD legends will involve additional charges and increased delivery time.

Fig. "A" _____ Fig. "B" _____

Sheet prepared by: _____ (Signature)
_____ (Date)



AML Lens Legend Sheet/Product Specification

Account No _____ Page _____ of _____

Catalog Listing
AML51 —
Customer P.O. No. _____ Customer Dwg. No. _____
MICRO SWITCH Sales Order _____ Line Number _____ Schedule No. _____
Customer: _____
Address: _____ (city) _____ (state) _____

LEGEND ORDER GUIDE

Button: Type Orientation	Figure No	Max Lines			Max Characters								
		5/64	7/64	9/64	13/64	5/16	5/16						
AREA 1 J	1	4	3	3	2	2	1	14	11	10	7	6	3
AREA 1 K	2	4	3	3	2	2	1	6	5	5	3	3	1
AREA 1 2 3 L	3	4	3	3	2	2	1	4	3	3	3	2	1
AREA 1 J	4	4	3	3	3	3	2	9	7	6	4	3	2
AREA 1 2 K	5	3	2	2	2	1	1	8	7	6	4	2	2
AREA 1 2 3 L	6	2	2	1	1	1	0	8	7	6	4	3	0

Standard Legend Placement

1. Transmitted Color — Legend on outer shell (Button)
2. Dead Front - Legend on Insert
3. Projected Color - Legend on outer shell (Button)

Note

1. For Proper Legend Orientation, AML housings (when viewed from front of panel) should have "MICRO SWITCH" logo oriented "UP" on square devices and "UP" or to the "LEFT" on rectangular devices.
2. Please use black ink in filling out this form to help us process your order.

Instructions

1. Fill in appropriate catalog listing - one listing/sheet.
2. Check proper figure #, type size, type color.
3. Fill in quantity required.
4. Indicate legends desired — Do not exceed maximums shown in legend order guide.

LEGEND ORDER CHART

Customer Part No	Fig No	Type Size	Ink Color	But ton Qty	Legend Description			
					Sequence: Left-to-Right or Top-to-Bottom	3rd Line	4th Line	
	1				1st Line	2nd Line	3rd Line	4th Line
	2							
	3							
	1							
	2							
	3							
	1							
	2							
	3							

Modified Gothic lettering (A thru Z), numerals (0 thru 9) and Symbols below available in 5/64, 7/64, 9/64, 13/64 and 5/16.

A3 Modified Gothic

.	,	;	!	?	'	"	-	/	()	*	&
\$	¢	#	%	o	+	-	±	+	=	≠	>	<
→	↑	↓	←	CR	1/4	1/2	3/4	1/3	2/3	@	∞	

SPECIAL LEGENDS

NOTE: Use this area to show special Legend Locations or Configurations NOT shown above. NON-STANDARD legends will involve additional charges and increased delivery time.

Fig. "A" _____ Fig. "B" _____

Sheet Prepared By: _____ (Signature) _____ (Name)

FO-63395-E



Компания «ЭлектроПласт» предлагает заключение долгосрочных отношений при поставках импортных электронных компонентов на взаимовыгодных условиях!

Наши преимущества:

- Оперативные поставки широкого спектра электронных компонентов отечественного и импортного производства напрямую от производителей и с крупнейших мировых складов;
- Поставка более 17-ти миллионов наименований электронных компонентов;
- Поставка сложных, дефицитных, либо снятых с производства позиций;
- Оперативные сроки поставки под заказ (от 5 рабочих дней);
- Экспресс доставка в любую точку России;
- Техническая поддержка проекта, помощь в подборе аналогов, поставка прототипов;
- Система менеджмента качества сертифицирована по Международному стандарту ISO 9001;
- Лицензия ФСБ на осуществление работ с использованием сведений, составляющих государственную тайну;
- Поставка специализированных компонентов (Xilinx, Altera, Analog Devices, Intersil, Interpoint, Microsemi, Aeroflex, Peregrine, Syfer, Eurofarad, Texas Instrument, Miteq, Cobham, E2V, MA-COM, Hittite, Mini-Circuits, General Dynamics и др.);

Помимо этого, одним из направлений компании «ЭлектроПласт» является направление «Источники питания». Мы предлагаем Вам помощь Конструкторского отдела:

- Подбор оптимального решения, техническое обоснование при выборе компонента;
- Подбор аналогов;
- Консультации по применению компонента;
- Поставка образцов и прототипов;
- Техническая поддержка проекта;
- Защита от снятия компонента с производства.



Как с нами связаться

Телефон: 8 (812) 309 58 32 (многоканальный)

Факс: 8 (812) 320-02-42

Электронная почта: org@eplast1.ru

Адрес: 198099, г. Санкт-Петербург, ул. Калинина, дом 2, корпус 4, литера А.