

## Description

The SDAH01 Evaluation Kit is used to assess the HS3001 High-Performance Relative Humidity and Temperature Sensor. The hardware allows users to perform data logging experiments, and it can communicate through a standard USB interface with the user's computer using the *IDT Demo Software*. This software makes it possible to view measurements in real-time, adjust the resolution of the sensor, configure measurement parameters, and download previously logged measurements. The Evaluation Board can be powered directly from the USB port of the user's computer or from a 1632 coin cell battery to enable fully autonomous (untethered) data logging.

## Kit Contents

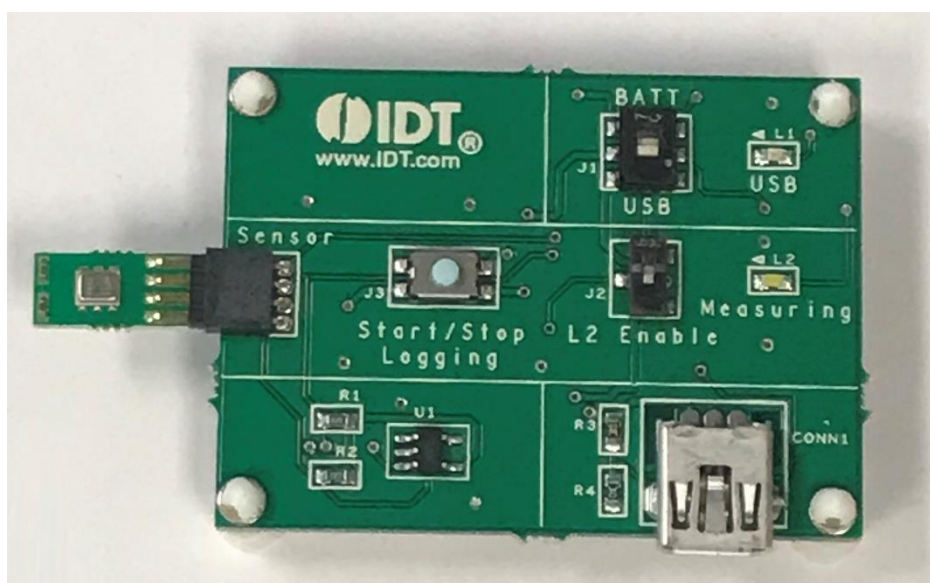
- SDAH01 Evaluation Board
- 3 HS3001 Sensor Modules
- Sensor Module Extension Cable
- USB Key (flash drive) with the *IDT Demo Software*
- USB Cable
- *Quick Start Guide*
- *User Manual for the SDAH01 Evaluation Kit*

## Features

- SDAH01 Evaluation Board operating temperature: -40°C to 85°C
- Relative Humidity Sensor Module with HS3001 sensor sample mounted:
  - RH accuracy:  $\pm 1.5\%RH$
  - Operating temperature: -40 to 105°C
- USB key containing the *IDT Demo Software*:
  - Data plotter
  - Measurement resolution configuration
  - Data export
- Sensor Module Extension Cable allows extending the HS3001 Sensor Module to different measurement areas



## SDAH01 Evaluation Kit



## Important Notes

### Disclaimer

Integrated Device Technology, Inc. and its affiliated companies (herein referred to as "IDT") shall not be liable for any damages arising out of defects resulting from

- (i) delivered hardware or software
- (ii) non-observance of instructions contained in this manual and in any other documentation provided to user, or
- (iii) misuse, abuse, use under abnormal conditions, or alteration by anyone other than IDT.

TO THE EXTENT PERMITTED BY LAW, IDT HEREBY EXPRESSLY DISCLAIMS AND USER EXPRESSLY WAIVES ANY AND ALL WARRANTIES, WHETHER EXPRESS, IMPLIED, OR STATUTORY, INCLUDING, WITHOUT LIMITATION, IMPLIED WARRANTIES OF MERCHANTABILITY AND OF FITNESS FOR A PARTICULAR PURPOSE, STATUTORY WARRANTY OF NON-INFRINGEMENT, AND ANY OTHER WARRANTY THAT MAY ARISE BY REASON OF USAGE OF TRADE, CUSTOM, OR COURSE OF DEALING.

### Restrictions in Use

IDT's SDAH01 Evaluation Kit consisting of the SDAH01 Evaluation Board, HS3001 Sensors, cables, documentation, and *IDT Demo Software* are designed to provide a quick setup for taking RH% and temperature measurements with the HS3001 only. IDT's SDAH01 Evaluation Kit and *IDT Demo Software* must not be used for any mission-critical applications, end-customer products, or measurement reference source.

## Contents

1.	Setup .....	3
1.1	User Computer Requirements and Setup .....	3
1.1.1	Computer Requirements .....	3
1.1.2	Software Installation and Setup .....	3
1.2	Kit Hardware Connections .....	4
2.	Usage Guide .....	5
2.1	Measurement Settings .....	5
2.2	Exporting Data .....	6
2.3	Data Logging Mode (Untethered) .....	6
2.4	Data Logging Settings .....	7
2.5	Using the Plotter .....	7
2.6	Valid Settings Ranges .....	7
3.	Ordering Information .....	7
4.	Revision History .....	8

## List of Figures

Figure 1.	Initial Display after Installation of the <i>IDT Demo Software</i> .....	3
Figure 2.	Evaluation Kit Connections .....	4
Figure 3.	Measurement Settings .....	5
Figure 4.	Set Resolution .....	5
Figure 5.	Battery Installation .....	6
Figure 6.	Download Data to IDT Demo Software .....	6

## 1. Setup

### 1.1 User Computer Requirements and Setup

#### 1.1.1 Computer Requirements

A Windows®-based computer is required for interfacing with the kit and configuring the part. The user must have administrative rights on the computer to install the *IDT Demo Software* for the kit.

The computer must meet the following minimum systems requirements:

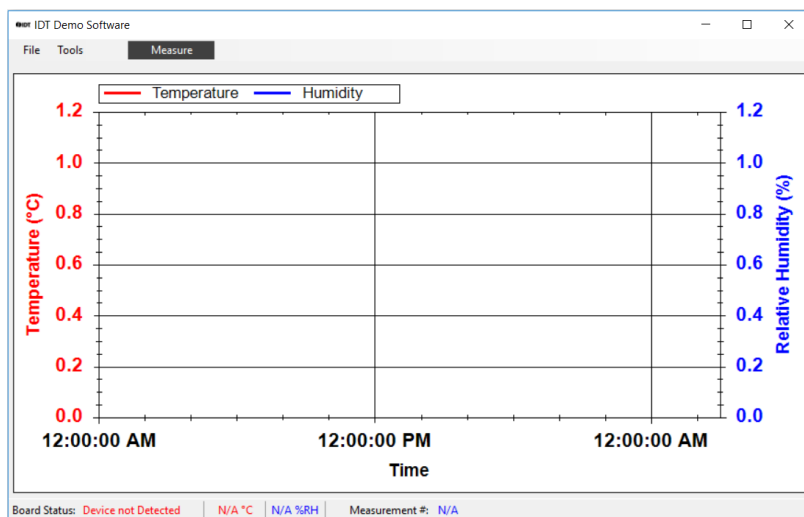
- CPU: Intel or compatible
- RAM: 512 MByte
- Windows® XP / Vista / 7 / 8 / 10
- Ports: One available US port

#### 1.1.2 Software Installation and Setup

Follow these procedures to install the *IDT Demo Software*:

1. Plug in the USB flash drive to start the setup.
2. If the setup process does not start automatically, double-click on the *Setup.exe* file.

**Figure 1. Initial Display after Installation of the *IDT Demo Software***

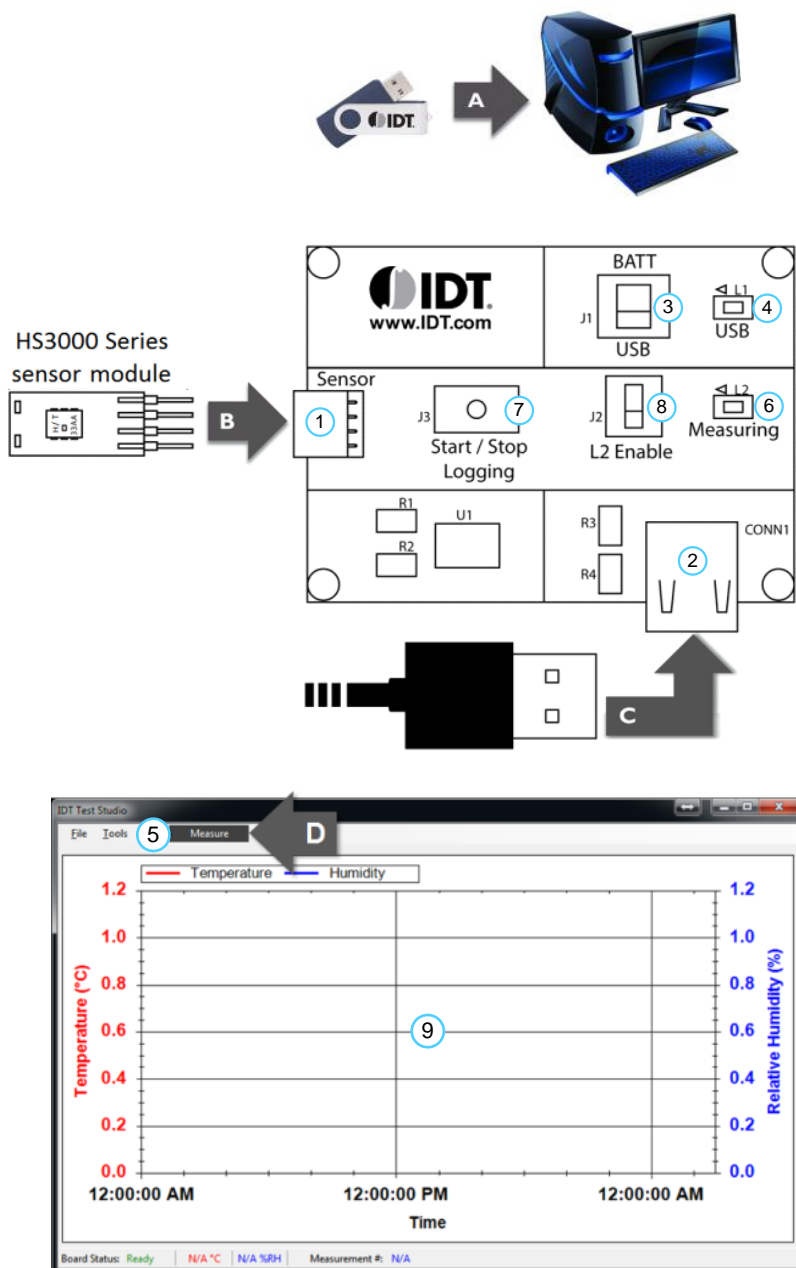


## 1.2 Kit Hardware Connections

Follow these procedures to set up the kit as shown in Figure 2:

- A. Install the software from the USB flash drive as described in section 1.1.2.
- B. Connect one of the HS3001 sensor modules facing up, with or without the extension cable attached, into the sensor module connector ①.
- C. Connect the USB port ② of the board to the user's computer using the supplied USB cable, and ensure that the power switch ③ on the board is in the *USB* position. The "USB" LED ④ will light.
- D. Run the *IDT Demo Software* package from the Start menu, and click on the "Measure" button ⑤. The "Measuring" indicator ⑥ will blink whenever data is being captured.

**Figure 2. Evaluation Kit Connections**

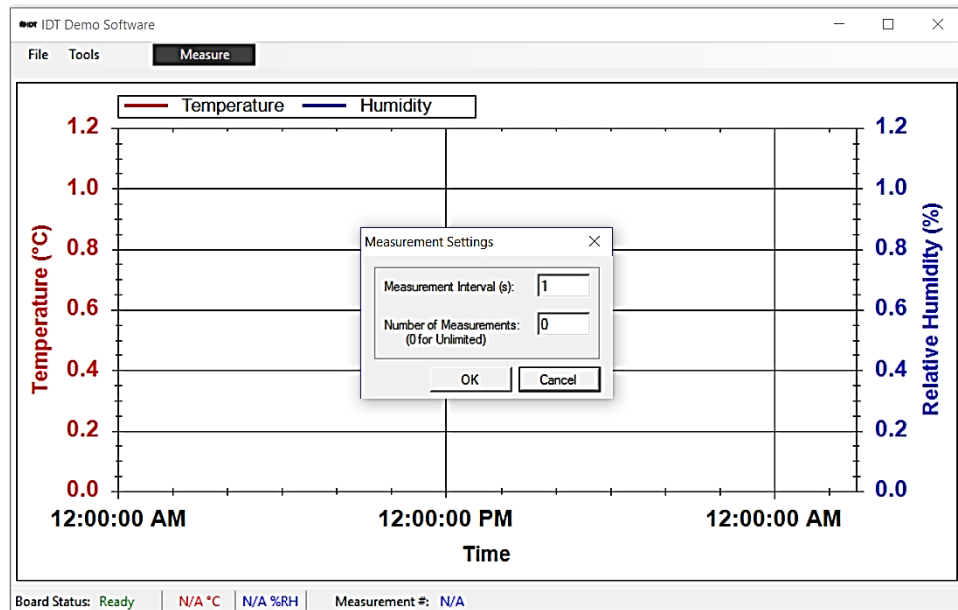


## 2. Usage Guide

### 2.1 Measurement Settings

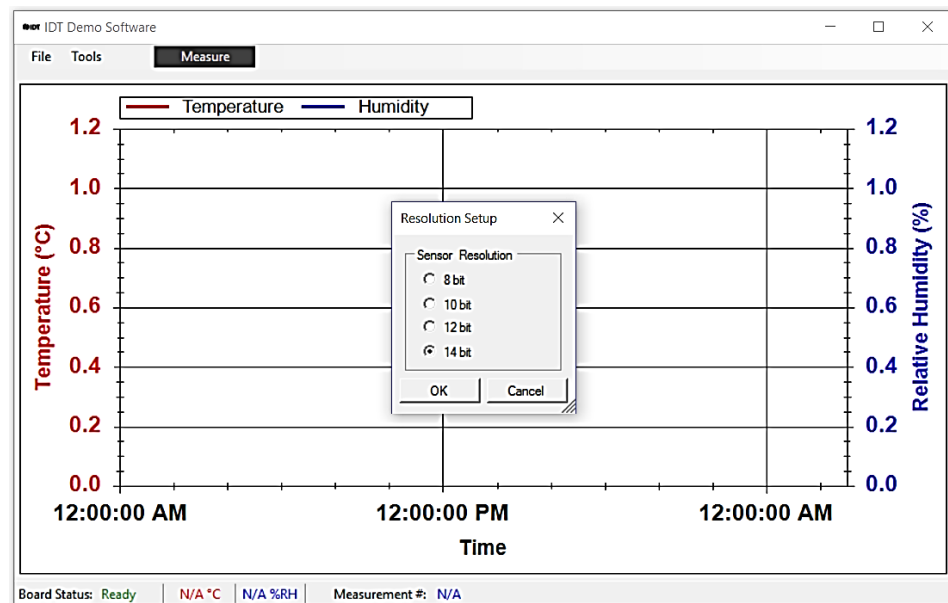
To change the interval and number of measurements to be made, select *Measurement Settings* from the *Tools* menu, enter the desired values, and then click OK, as shown in Figure 3. See section 2.1 for the range of valid settings for these two entry fields.

**Figure 3. Measurement Settings**



To change the measurement resolution, select *Set Resolution* from the *Tools* menu, select the desired resolution, and then click OK, as shown in Figure 4. The resolution setting is stored on the sensor, and it will be the default value applied when measurements are started. Measurement settings can be changed only when no measurements are being taken.

**Figure 4. Set Resolution**



## 2.2 Exporting Data

The data displayed in the plotter area can be exported in two different formats.

- To export the measured data points in a Microsoft Excel® compatible comma-separated text file, select *Save Data* from the *File* menu. Create a filename for the data, and select the location where the file will be saved.
- To export the plots themselves as a picture file, right click on the plot area and select *Save Image As*. Create a file name, select the location, and select the file type for the image.

## 2.3 Data Logging Mode (Untethered)

Disconnect the kit from the computer. Ensure that a battery is inserted in the battery holder on the back of the board with the positive battery terminal facing away from the board, as shown in Figure 5.

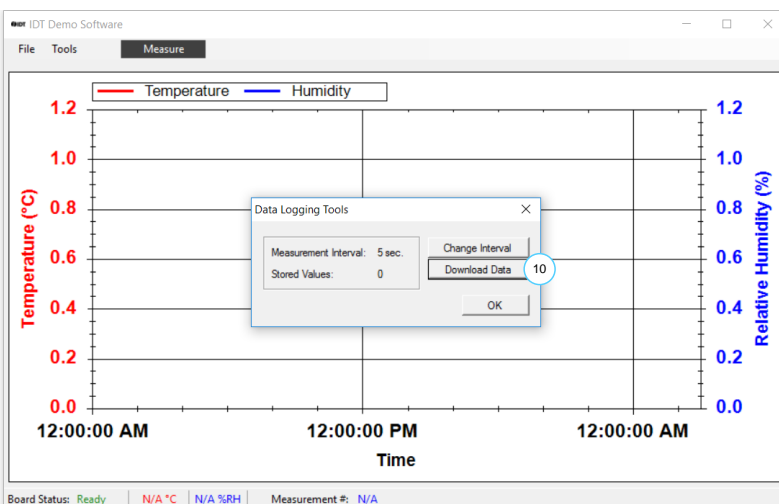
**Figure 5. Battery Installation**



The following steps describe how to operate the kit in the data logging mode (see Figure 2).

1. To set the board to the data logging mode, put the power switch ③ in the “Batt” position.
2. To start data logging, hold the “Start/Stop Logging” button ⑦ for 3 seconds. The “Measuring” indicator ⑥ will light for 2 seconds and then start blinking on every logged measurement. This can be disabled to extend the battery life by toggling the “L2 Enable” switch ⑧.
3. To stop data logging, press the “Start/Stop Logging” button. The “Measuring” indicator blinks 3 times to indicate the end of data logging.
4. To download the logged data to the *IDT Demo Software*, connect the USB port ② to the computer using the supplied USB cable, and ensure that the power switch ③ on the board is in the USB position. The “USB” LED ④ will light.
5. In the software, select *Data Logging* from the *Tools* menu and click on the *Download Data* button ⑩ as shown in Figure 6. The maximum number of measurements that can be stored on the board is 2000.

**Figure 6. Download Data to IDT Demo Software**




## 2.4 Data Logging Settings

To change the data logging measurement interval, select *Data Logging* from the *Tools* menu, and then click on *Change Interval*. Enter the desired measurement interval, and click *OK*.

The data logging resolution can be selected in the same fashion as described in section 2.1.

Data logging settings can only be changed when no measurements are being taken.

## 2.5 Using the Plotter

The plotter  displays the measured relative humidity and temperature data simultaneously versus time (see Figure 2).

- Hold the left mouse button, and drag it around an area to zoom onto that area.
- Hold the middle mouse or scroll button, and drag to pan across the plot area.
- To undo a zoom or pan operation, right click on the plot area, and select *Un-Zoom (Un-Pan)*.
- The plot area can always be reset to the default view by right clicking on the plot area and selecting *Undo All Zoom/Pan*.
- To display the measurement points on the plotted curves, right click on the plot area and select *Show Data Points*. While moving the application window, measurements points will not be plotted.

## 2.6 Valid Settings Ranges

Measurement settings can be selected within the following ranges:

- Measurement interval: 0.5 to 3600 s.
- Number of measurements: 1 to unlimited.
- Data logging interval: 1 to 250 s.
- Measurement resolution: 8, 10, 12, 14 bits.

## 3. Ordering Information

Orderable Part Number	Description
SDAH01	SDAH01 Evaluation Kit, including SDAH01 Evaluation Board, HS3001 sensor modules, sensor module extension cable, USB key with <i>IDT Demo Software</i> , USB cable, <i>Quick Start Guide</i> , <i>User Manual for the SDAH01 Evaluation Kit</i>

## 4. Revision History

Revision Date	Description of Change
November 16, 2017	Initial release.

**Corporate Headquarters**

6024 Silver Creek Valley Road  
San Jose, CA 95138  
[www.IDT.com](http://www.IDT.com)

**Sales**

1-800-345-7015 or 408-284-8200  
Fax: 408-284-2775  
[www.IDT.com/go/sales](http://www.IDT.com/go/sales)

**Tech Support**

[www.IDT.com/go/support](http://www.IDT.com/go/support)

DISCLAIMER Integrated Device Technology, Inc. (IDT) and its affiliated companies (herein referred to as "IDT") reserve the right to modify the products and/or specifications described herein at any time, without notice, at IDT's sole discretion. Performance specifications and operating parameters of the described products are determined in an independent state and are not guaranteed to perform the same way when installed in customer products. The information contained herein is provided without representation or warranty of any kind, whether express or implied, including, but not limited to, the suitability of IDT's products for any particular purpose, an implied warranty of merchantability, or no infringement of the intellectual property rights of others. This document is presented only as a guide and does not convey any license under intellectual property rights of IDT or any third parties.

IDT's products are not intended for use in applications involving extreme environmental conditions or in life support systems or similar devices where the failure or malfunction of an IDT product can be reasonably expected to significantly affect the health or safety of users. Anyone using an IDT product in such a manner does so at their own risk, absent an express, written agreement by IDT.

Integrated Device Technology, IDT and the IDT logo are trademarks or registered trademarks of IDT and its subsidiaries in the United States and other countries. Other trademarks used herein are the property of IDT or their respective third party owners. For datasheet type definitions and a glossary of common terms, visit [www.idt.com/go/glossary](http://www.idt.com/go/glossary). All contents of this document are copyright of Integrated Device Technology, Inc. All rights reserved.





Компания «ЭлектроПласт» предлагает заключение долгосрочных отношений при поставках импортных электронных компонентов на взаимовыгодных условиях!

Наши преимущества:

- Оперативные поставки широкого спектра электронных компонентов отечественного и импортного производства напрямую от производителей и с крупнейших мировых складов;
- Поставка более 17-ти миллионов наименований электронных компонентов;
- Поставка сложных, дефицитных, либо снятых с производства позиций;
- Оперативные сроки поставки под заказ (от 5 рабочих дней);
- Экспресс доставка в любую точку России;
- Техническая поддержка проекта, помощь в подборе аналогов, поставка прототипов;
- Система менеджмента качества сертифицирована по Международному стандарту ISO 9001;
- Лицензия ФСБ на осуществление работ с использованием сведений, составляющих государственную тайну;
- Поставка специализированных компонентов (Xilinx, Altera, Analog Devices, Intersil, Interpoint, Microsemi, Aeroflex, Peregrine, Syfer, Eurofarad, Texas Instrument, Miteq, Cobham, E2V, MA-COM, Hittite, Mini-Circuits, General Dynamics и др.);

Помимо этого, одним из направлений компании «ЭлектроПласт» является направление «Источники питания». Мы предлагаем Вам помощь Конструкторского отдела:

- Подбор оптимального решения, техническое обоснование при выборе компонента;
- Подбор аналогов;
- Консультации по применению компонента;
- Поставка образцов и прототипов;
- Техническая поддержка проекта;
- Защита от снятия компонента с производства.



#### Как с нами связаться

**Телефон:** 8 (812) 309 58 32 (многоканальный)

**Факс:** 8 (812) 320-02-42

**Электронная почта:** [org@eplast1.ru](mailto:org@eplast1.ru)

**Адрес:** 198099, г. Санкт-Петербург, ул. Калинина, дом 2, корпус 4, литера А.