

**PLEASE CHECK WWW.MOLEX.COM FOR LATEST PART INFORMATION**

**Part Number:** [0876322001](#)  
**Status:** **Active**  
**Overview:** [extreme powerplus ssi](#)  
**Description:** 6.35mm (.250") Pitch, Power, 2.54mm (.100") Pitch, Signal, EXTreme PowerPlus™ P-S-P Receptacle, Through Hole, Right Angle, Screw Mount, 28 Circuits, Power Beta 2, Signal 24, Power Alpha 2, Leadfree

**Documents:**

[3D Model](#) [Product Specification PS-87631-006 \(PDF\)](#)  
[Drawing \(PDF\)](#) [RoHS Certificate of Compliance \(PDF\)](#)

**General**

Product Family	PCB Receptacles
Series	<a href="#">87632</a>
Application	Board-to-Board
Comments	No Recessed Power Circuits
Overview	<a href="#">extreme powerplus ssi</a>
Product Name	EXTreme PowerPlus™

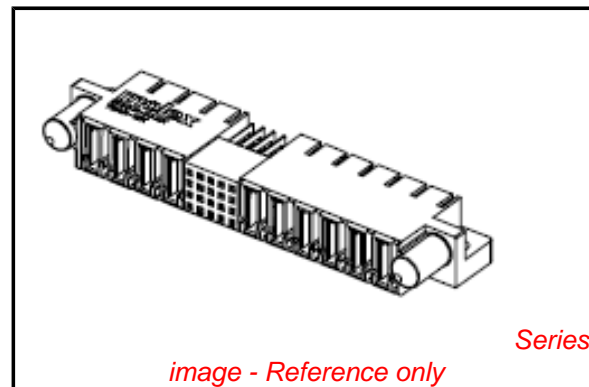
**Physical**

Circuits (Loaded)	28
Circuits Detail	Power Beta 2, Signal 24, Power Alpha 2
Color - Resin	Black
Durability (mating cycles max)	100
Glow-Wire Compliant	No
Guide to Mating Part	Yes
Keying to Mating Part	Yes
Lock to Mating Part	Yes
Material - Metal	Copper Alloy
Material - Plating Mating	Gold
Material - Plating Termination	Tin
Material - Resin	High Temperature Thermoplastic
Number of Rows	4
Orientation	Right Angle
PC Tail Length (in)	0.135 In
PC Tail Length (mm)	3.43 mm
PCB Locator	No
PCB Retention	Yes
Packaging Type	Tray
Pitch - Mating Interface (in)	0.100 In, 0.250 In
Pitch - Mating Interface (mm)	2.54 mm, 6.35 mm
Plating min: Mating (µin)	30
Plating min: Mating (µm)	0.76
Plating min: Termination (µin)	100
Plating min: Termination (µm)	2.54
Polarized to Mating Part	Yes
Polarized to PCB	Yes
Stackable	No
Temperature Range - Operating	-20°C to +105°C
Termination Interface: Style	Through Hole

**Electrical**

Current - Maximum per Contact	2.5A, 30A, 50A
Voltage - Maximum	50V

**Solder Process Data**



**EU RoHS**

**ELV and RoHS Compliant**  
**REACH SVHC**  
 Not Reviewed  
**Halogen-Free Status**

**China RoHS**



**Need more information on product environmental compliance?**

Email [productcompliance@molex.com](mailto:productcompliance@molex.com)  
 For a multiple part number RoHS Certificate of Compliance, [click here](#)

Please visit the [Contact Us](#) section for any non-product compliance questions.

**Search Parts in this Series**

[87632Series](#)

**Mates With**

[87631 EXTreme PowerPlus™ P-S-P Header](#)

Duration at Max. Process Temperature (seconds)	10
Lead-free Process Capability	SMC & Wave Capable (TH only)
Max. Cycles at Max. Process Temperature	3
Process Temperature max. C	260

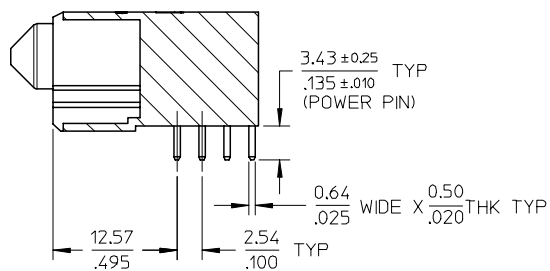
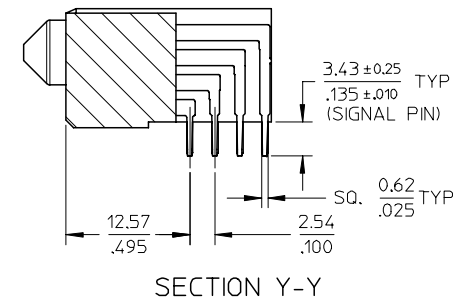
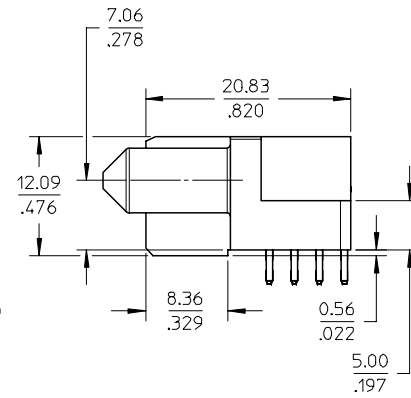
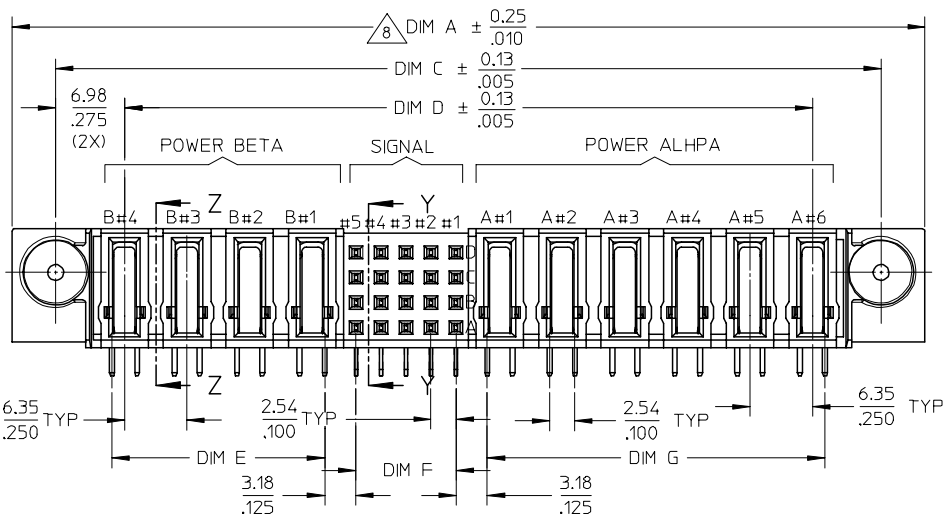
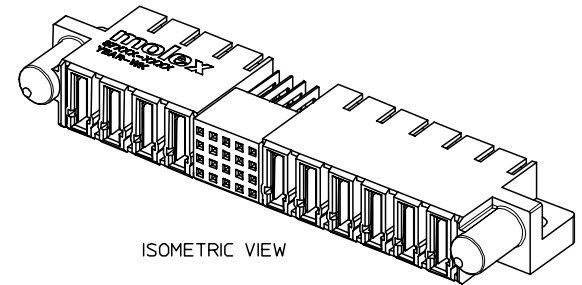
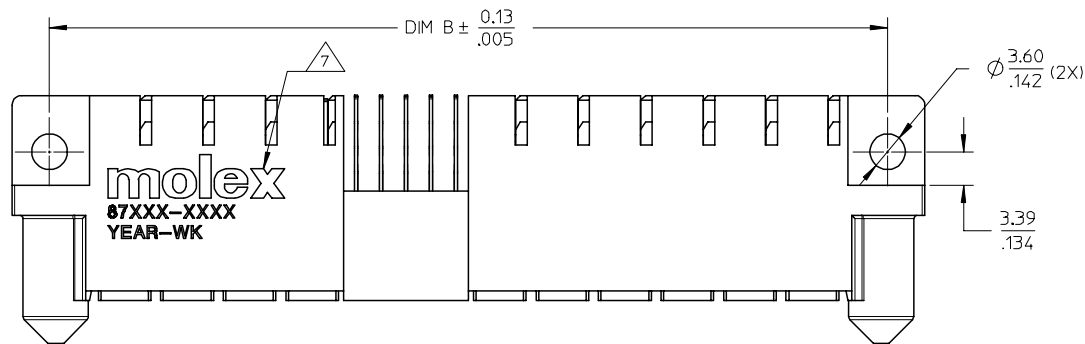
### **Material Info**

### **Reference - Drawing Numbers**

Application Specification	AS-87631-018
Product Specification	PS-87631-006
Sales Drawing	SD-87632-016

This document was generated on 05/21/2010

**PLEASE CHECK [WWW.MOLEX.COM](http://WWW.MOLEX.COM) FOR LATEST PART INFORMATION**



(CONTACT DETAIL NOT SHOWN)

PDR#S-001346-00-00 EC NO: S2007-0138 DRWN:GMENARLY CHKD:M LONG APPR:SKTOH	2006/08/28	2006/08/28	2006/08/28
	2006/08/28	2006/08/28	2006/08/28
	2006/08/28	2006/08/28	2006/08/28
	2006/08/28	2006/08/28	2006/08/28
3	REV	DESCRIPTION	

QUALITY SYMBOLS	▽=0	▽=0
-----------------	-----	-----

GENERAL TOLERANCES (UNLESS SPECIFIED)	DIMENSION STYLE MM/IN	
	mm	INCH
4 PLACES ± ---	± ---	± ---
3 PLACES ± ---	± .01	± ---
2 PLACES ± 0.25	± ---	± ---
1 PLACE ± ---	± ---	± ---
	ANGULAR ± 3 °	
DRAFT WHERE APPLICABLE MUST REMAIN WITHIN DIMENSIONS	SEE TABLE	

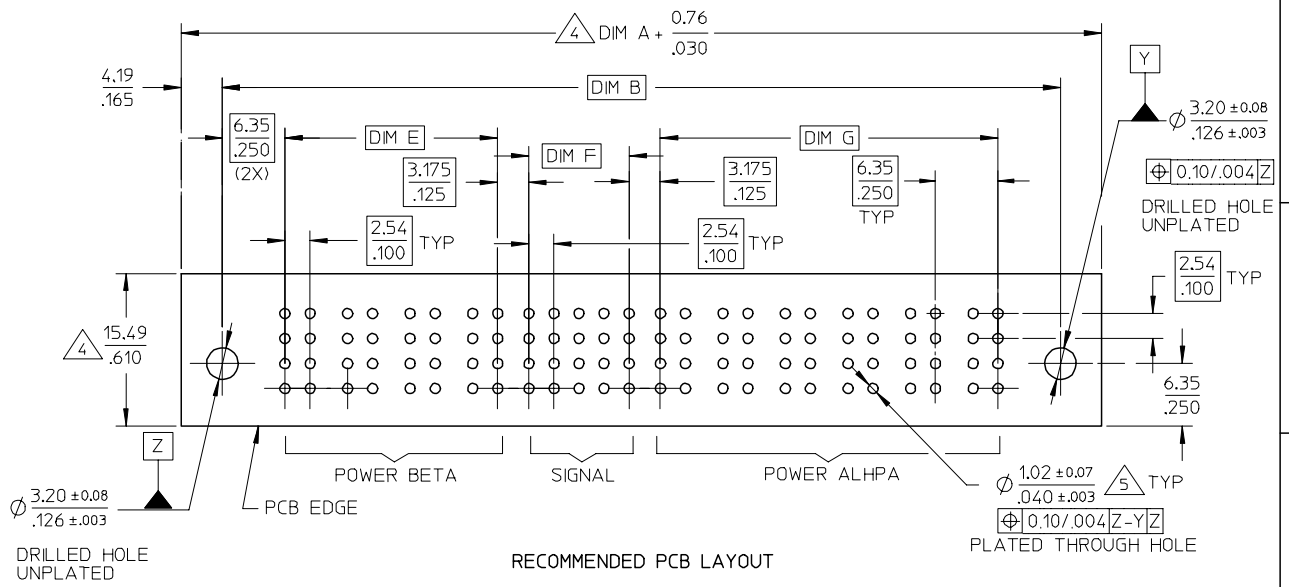
DRAWN BY	DATE	TITLE
KMGOH	2002/08/22	POWER CONN. RECEPTACLE P(B)-S-P(A) CONFIG. R/A, T/H, SCREW MOUNT
CHECKED BY	DATE	
PTL IM	2002/11/25	
APPROVED BY	DATE	
SKTOH	2002/11/26	
MATERIAL NO.	DOCUMENT NO.	SHEET NO.
	SD-87632-016	1 OF 2

SCALE NTS	DESIGN UNITS METRIC	THIRD ANGLE PROJECTION
MOLEX INCORPORATED		
THIS DRAWING CONTAINS INFORMATION THAT IS PROPRIETARY TO MOLEX INCORPORATED AND SHOULD NOT BE USED WITHOUT WRITTEN PERMISSION		

ASSEMBLY PART NUMBER	P-S-P CONFIGURATION			DIM A	DIM B	DIM C	DIM D	DIM E	DIM F	DIM G	RECESSED POWER CIRCUIT	VOID PIN LOCATION	PACKAGING		
	POWER BETA	SIGNAL	POWER ALPHA												
87632-2001	2	24	2	$\frac{57.15}{2.250}$	$\frac{49.53}{1.950}$	$\frac{48.26}{1.900}$	$\frac{34.29}{1.350}$	$\frac{8.89}{.350}$	$\frac{12.70}{.500}$	$\frac{8.89}{.350}$	NIL	NIL	TRAY		
87632-2002	2	12	2	$\frac{49.53}{1.950}$	$\frac{41.91}{1.650}$	$\frac{40.64}{1.600}$	$\frac{26.67}{1.050}$	$\frac{8.89}{.350}$	$\frac{5.08}{.200}$	$\frac{8.89}{.350}$					
87632-2003	4	20	4	$\frac{80.01}{3.150}$	$\frac{72.39}{2.850}$	$\frac{71.12}{2.800}$	$\frac{57.15}{2.250}$	$\frac{21.59}{.850}$	$\frac{10.16}{.400}$	$\frac{21.59}{.850}$					
87632-2007	4	28	6	$\frac{97.79}{3.850}$	$\frac{90.17}{3.550}$	$\frac{88.90}{3.500}$	$\frac{74.93}{2.950}$	$\frac{21.59}{.850}$	$\frac{15.24}{.600}$	$\frac{34.29}{1.350}$				A3,A4,A5,A6 B1,B2,B3,B4	A7,B7,C7,D7
87632-2008	4	24	6	$\frac{95.25}{3.750}$	$\frac{87.63}{3.450}$	$\frac{86.36}{3.400}$	$\frac{72.39}{2.850}$	$\frac{21.59}{.850}$	$\frac{12.70}{.500}$	$\frac{34.29}{1.350}$				NIL	NIL
87632-2009	4	24	6	$\frac{95.25}{3.750}$	$\frac{87.63}{3.450}$	$\frac{86.36}{3.400}$	$\frac{72.39}{2.850}$	$\frac{21.59}{.850}$	$\frac{12.70}{.500}$	$\frac{34.29}{1.350}$				A3,A4,A5,A6	

NOTES

- MATERIALS :-  
HOUSING - LCP, GLASS FILLED, UL94V-0, COLOR : BLACK.  
SIGNAL TERMINAL - COPPER ALLOY  
POWER TERMINAL - COPPER ALLOY
- FINISH :-  
SIGNAL & POWER CONTACTS  
0.76um MIN. GOLD (Au) AT CONTACT AREA AND 2.54um MIN. TIN AT SOLDER TAIL AREA OVER 1.27um MIN. NICKEL (Ni) UNDERPLATE.
- PRODUCT SPECIFICATION : PS-87631-006.
- COMPONENT STAY AWAY ZONE FROM CONNECTOR.
- PCB NOTE FOR DIAMETER 1.02/.040 PLATED HOLE  
- DRILLED HOLE SIZE IS 1.151/.0453  
- PLATE WITH 0.007/.0003 MINIMUM TIN OVER 0.03/.001 TO 0.08/.003 COPPER PLATING TO ACHIEVE 1.02±0.08/.040±.003 HOLE.
- ALL TERMINAL TIPS ARE DESIGNED WITH EXPOSE BASE COPPER. THIS IS CREATED BY FINAL CUTTING PROCESS PLATING.
- MANUFACTURER LOGO, PART NUMBER AND YEAR-WEEK CODE.
- 4 POWER BETA-20SIGNAL-6 POWER ALPHA IS SHOWN FOR ILLUSTRATION. POWER-SIGNAL-POWER CONFIGURATION IS AVAILABLE UP TO 203MM/8INCH. PLEASE CONTACT MOLEX SALES PERSONNEL FOR OTHER CONFIGURATION AND OPTION NEEDED.



PDR#S-001358-00-00 EC NO: S2007-0138 DRWN:GMENARLY CHKD:M.LONG APPR:SKTOH	2006/08/28 2006/08/28 2006/08/28	QUALITY SYMBOLS ▽=0 ▽=0	GENERAL TOLERANCES (UNLESS SPECIFIED)		DIMENSION STYLE		SCALE	DESIGN UNITS	THIRD ANGLE PROJECTION			
					MM/IN		NTS	METRIC				
							DRAWN BY	DATE	TITLE			
							CHECKED BY	DATE	POWER CONN. RECEPTACLE P(B)-S-P(A) CONFIG. R/A, T/H, SCREW MOUNT			
				ANGULAR ± 3 °		APPROVED BY	DATE	MOLEX INCORPORATED				
				DRAFT WHERE APPLICABLE MUST REMAIN WITHIN DIMENSIONS		MATERIAL NO.	DATE	DOCUMENT NO.		SHEET NO.		
						SEE TABLE		SD-87632-016		2 OF 2		
				THIS DRAWING CONTAINS INFORMATION THAT IS PROPRIETARY TO MOLEX INCORPORATED AND SHOULD NOT BE USED WITHOUT WRITTEN PERMISSION								



Компания «ЭлектроПласт» предлагает заключение долгосрочных отношений при поставках импортных электронных компонентов на взаимовыгодных условиях!

Наши преимущества:

- Оперативные поставки широкого спектра электронных компонентов отечественного и импортного производства напрямую от производителей и с крупнейших мировых складов;
- Поставка более 17-ти миллионов наименований электронных компонентов;
- Поставка сложных, дефицитных, либо снятых с производства позиций;
- Оперативные сроки поставки под заказ (от 5 рабочих дней);
- Экспресс доставка в любую точку России;
- Техническая поддержка проекта, помощь в подборе аналогов, поставка прототипов;
- Система менеджмента качества сертифицирована по Международному стандарту ISO 9001;
- Лицензия ФСБ на осуществление работ с использованием сведений, составляющих государственную тайну;
- Поставка специализированных компонентов (Xilinx, Altera, Analog Devices, Intersil, Interpoint, Microsemi, Aeroflex, Peregrine, Syfer, Eurofarad, Texas Instrument, Miteq, Cobham, E2V, MA-COM, Hittite, Mini-Circuits, General Dynamics и др.);

Помимо этого, одним из направлений компании «ЭлектроПласт» является направление «Источники питания». Мы предлагаем Вам помощь Конструкторского отдела:

- Подбор оптимального решения, техническое обоснование при выборе компонента;
- Подбор аналогов;
- Консультации по применению компонента;
- Поставка образцов и прототипов;
- Техническая поддержка проекта;
- Защита от снятия компонента с производства.



#### Как с нами связаться

**Телефон:** 8 (812) 309 58 32 (многоканальный)

**Факс:** 8 (812) 320-02-42

**Электронная почта:** [org@eplast1.ru](mailto:org@eplast1.ru)

**Адрес:** 198099, г. Санкт-Петербург, ул. Калинина, дом 2, корпус 4, литера А.