

bq20z80EVM-001 SBS1.1 Impedance Track™ Technology Enabled Battery Management Solution Evaluation Module

This EVM is a complete evaluation system for the bq20z80/bq29312/bq29401 battery management system. The EVM includes one bq20z80/bq29312/bq29401 circuit module, a current sense resistor, two thermistors, an EV2300 PC interface board for gas gauge interface, a PC USB cable, and Windows™-based PC software. The circuit module includes one bq20z80 IC, one bq29312 IC, one bq29401 IC, and all other onboard components necessary to monitor and predict capacity, perform cell balancing, monitor critical parameters, protect the cells from overcharge, over discharge, short circuit, and overcurrent in 2-, 3- or 4-series cell Li-ion or Li-polymer battery packs. The circuit module connects directly across the cells in a battery. With the EV2300 interface board and software, the user can read the bq20z80 data registers, program the chipset for different pack configurations, log cycling data for further evaluation, and evaluate the overall functionality of the bq20z80/bq29312/bq29401 solution under different charge and discharge conditions.

Contents

| | | |
|----|---|----|
| 1 | Features | 3 |
| 2 | bq20z80/bq29312-Based Circuit Module | 3 |
| 3 | bq20z80/bq29312 Circuit Module Schematic | 4 |
| 4 | Circuit Module Physical Layouts and Bill of Materials | 5 |
| 5 | EVM Hardware and Software Setup | 10 |
| 6 | Troubleshooting Unexpected Dialog Boxes | 10 |
| 7 | Hardware Connection | 11 |
| 8 | Operation | 12 |
| 9 | Calibration Screen | 15 |
| 10 | Pro (Advanced) Screen | 17 |
| | Trademarks | 18 |

List of Figures

| | | |
|----|---|----|
| 1 | bq20z80EVM-001 Layout (Silk Screen) | 5 |
| 2 | Top Assembly | 5 |
| 3 | Layer 1 | 6 |
| 4 | Layer 2 (Internal 1) | 6 |
| 5 | Layer 3 (Internal 2) | 6 |
| 6 | Layer 4 | 6 |
| 7 | Mask (Layer 1) | 7 |
| 8 | Mask (Layer 4) | 7 |
| 9 | Bottom Assembly | 7 |
| 10 | bq20z80bq29312 Circuit Module Connection to Cells and System Load/Charger | 11 |
| 11 | SBS Data Screen | 12 |
| 12 | Data Flash Screen, 1st Level Safety Class | 13 |
| 13 | Calibration Screen | 16 |
| 14 | Pro (Advanced) Screen | 17 |

List of Tables

| | | |
|---|---|----|
| 1 | Ordering Information | 3 |
| 2 | Components and Flash-Memory Settings for Different Precharge Modes..... | 5 |
| 3 | Bill of Materials..... | 8 |
| 4 | Performance Specification Summary..... | 10 |
| 5 | Circuit Module to EV2300 Connections | 11 |

1 Features

- Complete evaluation system for the bq20z80 SBS 1.1-compliant advanced gas gauge with Impedance Track™ Technology, bq29312 analog front end (AFE) and protection IC, and bq29401 independent overvoltage protection IC
- Populated circuit module for quick setup
- PC software and interface board for easy evaluation
- Software that allows data logging for system analysis

1.1 Kit Contents

- bq20z80/bq29312/bq29401 circuit module
- EV2300 PC interface board
- Software CD with the evaluation software
- Connection cable to interface board
- Set of support documentation
- EV2300 USB interface board

1.2 Ordering Information

Table 1. Ordering Information

| EVM PART NUMBER | CHEMISTRY | CONFIGURATION | CAPACITY |
|-----------------|-----------|-----------------|----------|
| bq20z80EVM-001 | Li-ion | 2, 3, or 4 cell | Any |

2 bq20z80/bq29312-Based Circuit Module

The bq20z80/bq29312/bq29401-based circuit module is a complete and compact example solution of a bq20z80 and bq29312 circuit for battery management and protection of Li-ion or Li-polymer packs. The circuit module incorporates a bq20z80 battery monitor IC, bq29312 AFE and protection IC, bq29401 independent overvoltage protection IC, and all other components necessary to accurately predict the capacity of 2-, 3-, or 4-series cells.

2.1 Circuit Module Connections

Contacts on the circuit module provide the following connections:

- Direct connection to the cells: 1N (BAT-), 1P, 2P, 3P, 4P (BAT+)
- To the serial communications port (SMBC, SMBD)
- The system load and charger connect across PACK+ and PACK-
- To the *system* present pin (SYS PRES)
- To the *sleep* pin (SLEEP)

2.2 Pin Descriptions

| PIN NAME | DESCRIPTION |
|----------|---|
| 1N | -ve connection of first (bottom) cell |
| 1P | +ve connection of first (bottom) cell |
| 2P | +ve connection of second cell |
| 3P | +ve connection of third cell |
| 4P | +ve connection of fourth (top) cell |
| SMBC | Serial communication port clock |
| SMBD | Serial communication data port |
| SYS PRES | System present pin (if low, system is present) |
| SLEEP | Sleep mode pin (if high, AFE enters sleep mode) |
| PACK- | Pack negative terminal |
| VSS | Pack negative terminal |
| PACK+ | Pack positive terminal |

3 bq20z80/bq29312 Circuit Module Schematic

This section contains information for modifying and choosing a precharge mode for bq20z80/bq29312/bq29401 implementation.

3.1 Schematic

The schematic follows the Bill of Materials in this user's guide.

3.2 Modifications for Choosing Particular Precharge Mode

In order to charge, the charge FET (CHG-FET) must be turned on to create a current path. When the $V_{(BAT)}$ is 0 V and CHG-FET = ON, the $V_{(PACK)}$ is as low as the battery voltage. In this case, the supply voltage for the device is too low to operate. This function has three possible configurations, and the bq29312 can be easily configured according to the application needs. The three modes are 0-V Charge FET mode, Common FET mode, and Precharge FET mode.

1. 0-V Charge FET mode - Dedicates a precharge current path using an additional FET (ZVCHG-FET) to sustain the PACK+ voltage level.
2. Common FET mode - Does not use a dedicated precharge FET. The charge FET (CHG-FET) is set to ON state as default.
3. Precharge FET mode - Dedicates a precharge current path using an additional open-drain (OD) pin drive FET (PCHG-FET) FET to sustain the PACK+ voltage level.

To use a particular mode of charging with the EVM, add or remove some elements shown in [Table 2](#), and use the given settings of DF.Configuration, ZVCHG1, 0.

Table 2. Components and Flash-Memory Settings for Different Precharge Modes

| MODE | RESISTORS | FET | ZVCHG1 | ZVCHG0 |
|------------|-----------|--------------------|--------|--------|
| 1(default) | R19, R24 | Q3, SI4435DY | 0 | 0 |
| 2 | R17 | — | 0 | 1 |
| 3 | R19, R29 | Q3, open-drain FET | 1 | 0 |

For more details about precharge operation and mode choices, see the bq29312 data sheet at <http://www-s.ti.com/sc/ds/bq29312.pdf>.

3.3 Testing Fuse-Blowing Circuit

To prevent the loss of board functionality during the fuse-blowing test, the actual chemical fuse is not provided in the circuit. FET Q4 drives TP4 low if a fuse-blow condition occurs; so, monitoring TP4 can be used to test this condition. Fuse placement on the application board is shown in the bq20z80 data sheet reference-board schematic.

4 Circuit Module Physical Layouts and Bill of Materials

This section contains the board layout, bill of materials, and assembly drawings for the bq20z80/ bq29312/ bq29401 circuit module.

4.1 Board Layout

This section shows the dimensions, PCB layers, and assembly drawing for the bq20z80/bq29312 module.

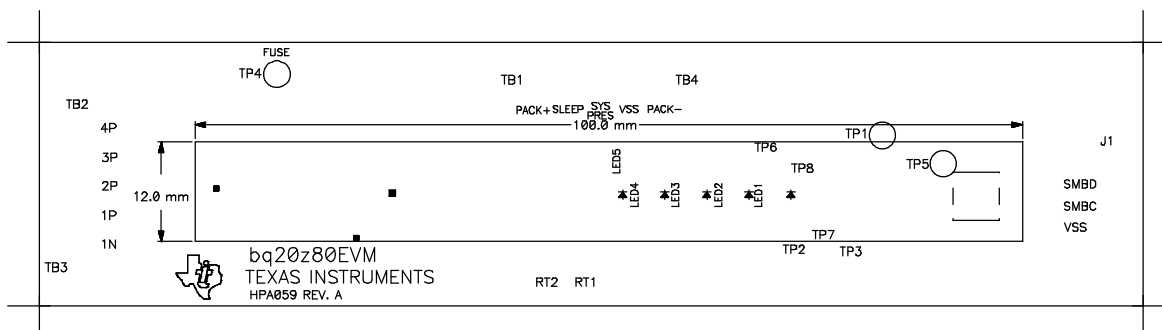


Figure 1. bq20z80EVM-001 Layout (Silk Screen)

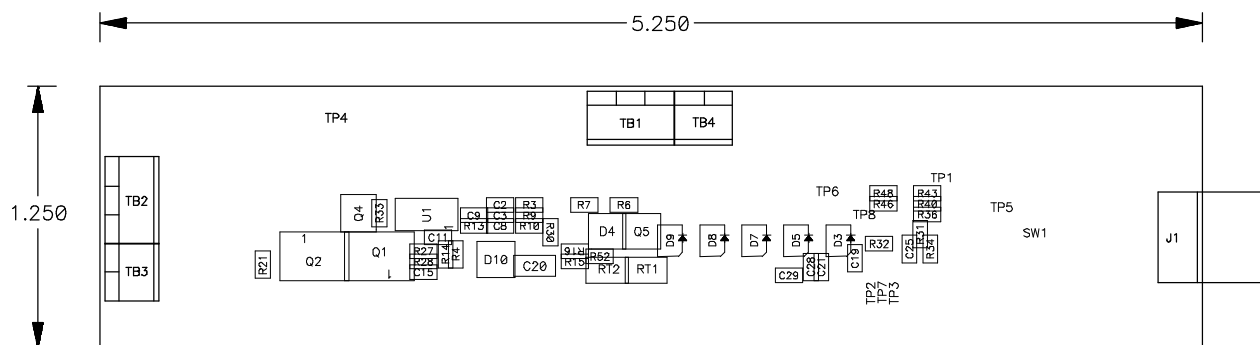


Figure 2. Top Assembly

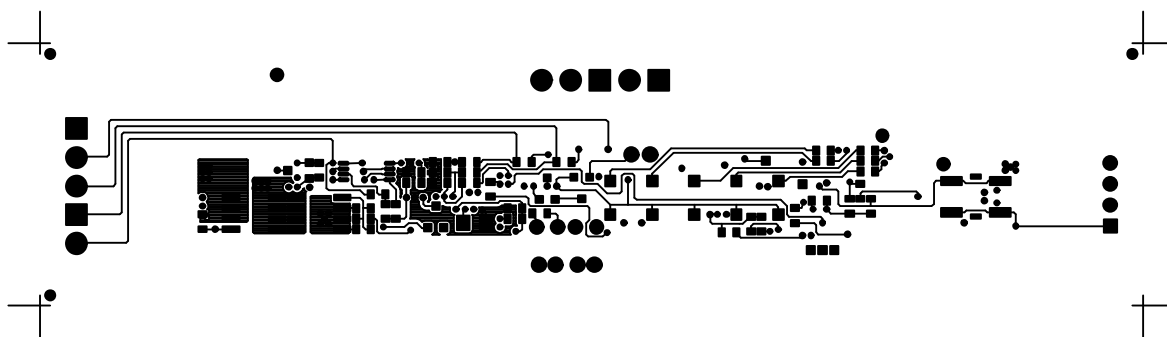


Figure 3. Layer 1

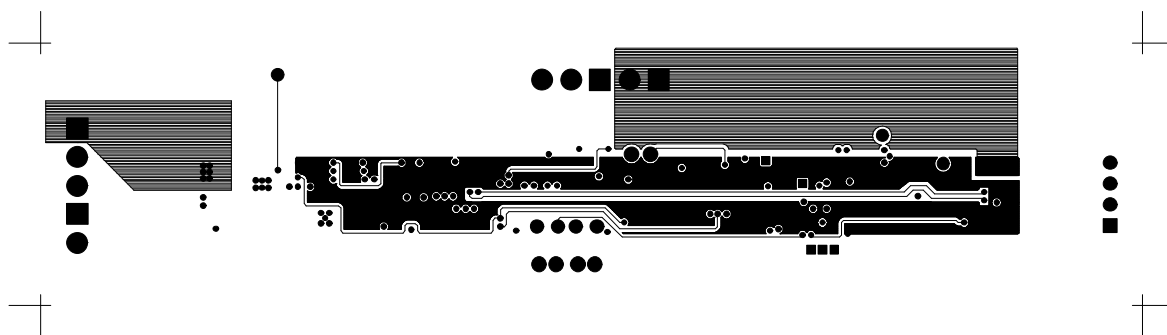


Figure 4. Layer 2 (Internal 1)

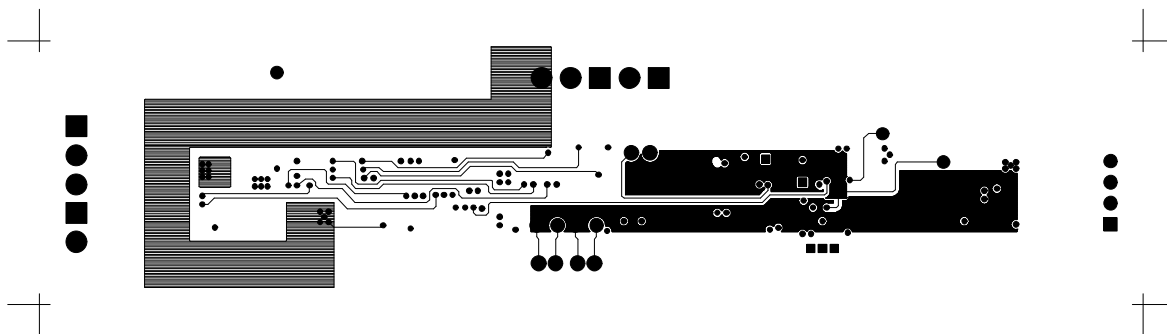


Figure 5. Layer 3 (Internal 2)

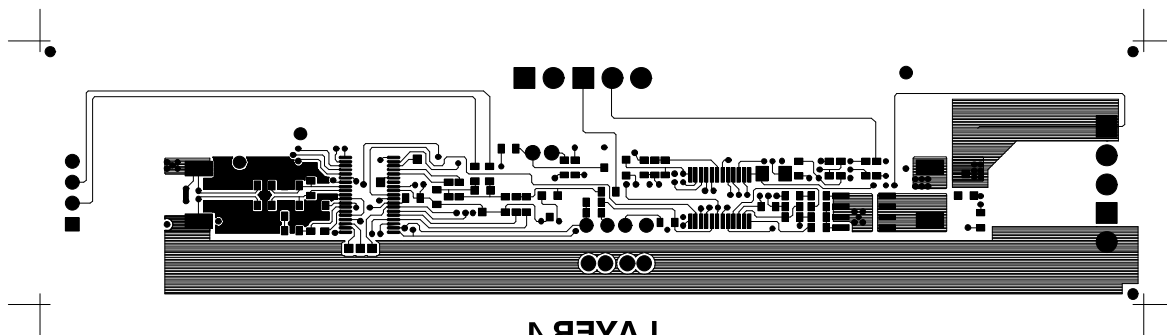


Figure 6. Layer 4

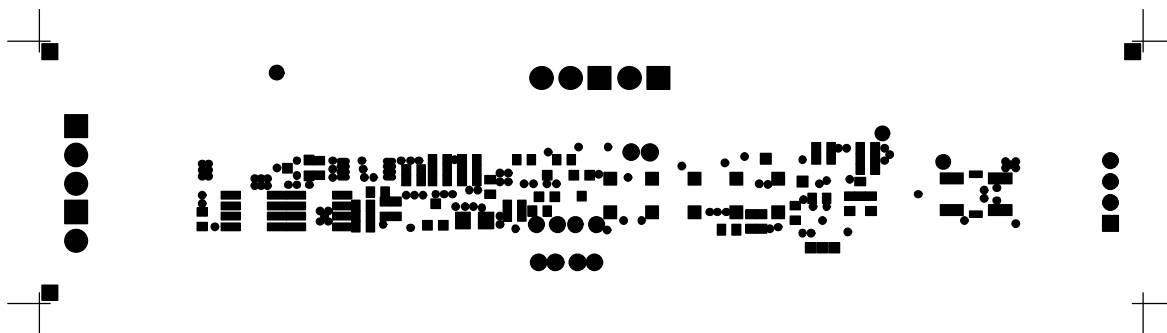
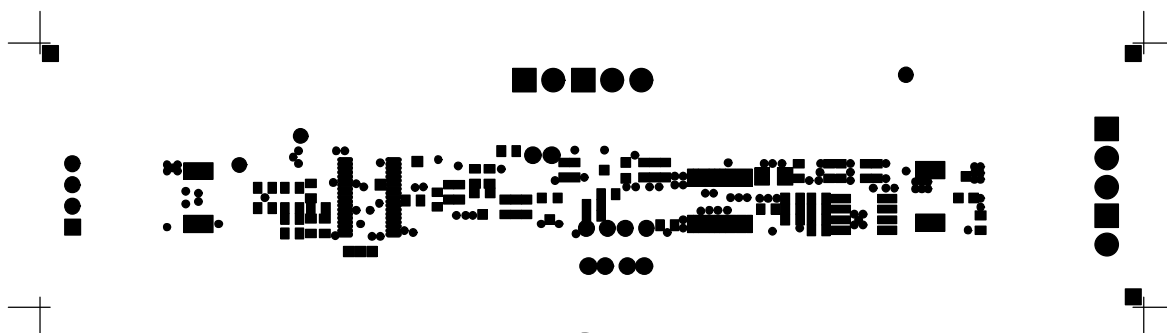


Figure 7. Mask (Layer 1)



MASK 4
 Figure 8. Mask (Layer 4)

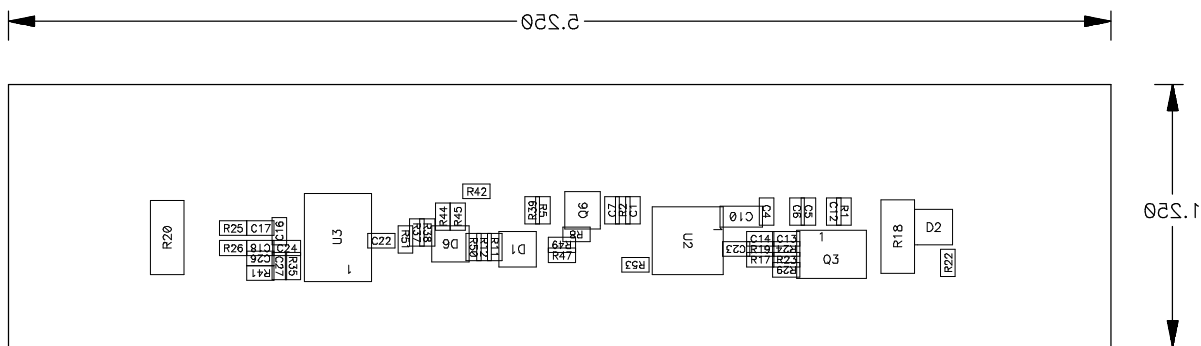


Figure 9. Bottom Assembly

4.2 Bill of Materials

Table 3. Bill of Materials

| Count | Ref Des | Description | Size | MFG | Part No. |
|-------|---|--|----------------------|-------------------|--------------------|
| 18 | C1, C2, C3, C4, C5, C6, C7, C8, C9, C11, C12, C13, C14, C16, C17, C18, C19, C21 | Capacitor, ceramic, 0.1 μ F 50 V, X7R, 20% | 603 | Any | STD |
| 1 | C10 | Capacitor, ceramic, 1.0 μ F, 50 V, X7R, 20% | 1206 | Any | STD |
| 0 | C36 | Capacitor, ceramic, 0.1 μ F, 16 V, X7R, 10% | 603 | Any | STD |
| 1 | C15 | Capacitor, ceramic, 0.047 μ F, 50 V, X7R, 10% | 603 | Any | STD |
| 1 | C20 | Capacitor, ceramic, 4.7 μ F, 16 V, X7R, 10% | 1206 | Any | STD |
| 5 | C19, C22, C24, C28, C29 | Capacitor, ceramic, 0.47 μ F, 16 V, X7R, 10% | 603 | Any | STD |
| 1 | C26 | Capacitor, ceramic, 2200 pF, 16 V, COG, 10% | 603 | Any | STD |
| 1 | C27 | Capacitor, ceramic, 150 pF, 16 V, COG, 10% | 603 | Any | STD |
| 2 | D1, D6 | Diode, dual, Zener, 5.6 V, 300 mW | SOT23 | Vishay-Telefunken | AZ23C5V6 |
| 1 | D2 | Diode, dual ultra fast, series, 200 mA, 70 V | SOT23 | Fairchild | BAV99 |
| 5 | D3, D5, D7, D8, D9 | Diode, LED, green, Gullwing, GW type, 20 mA, 7.5 mcd Typ | Gullwing | Panasonic | LN1361C |
| 1 | D4 | Diode, dual Schottky, 200 mA, 30 V | SOT23 | Vishay-Liteon | BAT54C |
| 1 | D10 | Diode, Schottky | SOT23 | Vishay-Liteon | BAT54C |
| 1 | J1 | Header, friction lock assembly, 4-pin right angle | 0.400 \times 0.500 | Molex | 22-05-3041 |
| 3 | Q1, Q2, Q3 | MOSFET, P-ch, 30 V, 8.0 A, 20 m Ω | SO8 | Vishay-Siliconix | Si4435DY |
| 2 | Q4, Q6 | MOSFET, N-ch, 60 V, 115 mA, 1.2 Ω | SOT23 | Vishay-Liteon | 2N7002DICT |
| 1 | Q5 | MOSFET, P-ch, 50 V, 130 mA, 10 Ω | SOT23 | Vishay | BSS84 |
| 16 | R1, R2, R3, R8, R9, R10, R13, R14, R15, R25, R26, R30, R37, R38, R44, R45 | Resistor, chip, 100 Ω , 1/16 W, 5% | 603 | STD | STD |
| 0 | R29 | Resistor, chip, 4.99 k Ω , 1/16 W, 1% | 603 | STD | STD |
| 5 | R11, R12, R22, R24, R28 | Resistor, chip, 4.99 k Ω , 1/16 W, 1% | 603 | STD | STD |
| 0 | R17 | Resistor, chip, 100 k Ω , 1/16 W, 5% | 603 | STD | STD |
| 7 | R16, R19, R31, R33, R34, R39, R42 | Resistor, chip, 100 k Ω , 1/16 W, 5% | 603 | STD | STD |
| 1 | R18 | Resistor, chip, 300 Ω , 1 W, 1% | 2512 | | RCW-2512-301-F |
| 1 | R20 | Resistor, chip, 0.020 Ω , 1 W, 1% | 2512 | Vishay | WSL-2512-0 |
| 5 | R21, R23, R27, R50, R51 | Resistor, chip, 1 M Ω , 1/16 W, 5% | 603 | | |
| 1 | R32 | Resistor, chip, 10 Ω , 1/16 W, 5% | 603 | STD | STD |
| 1 | R35 ⁽¹⁾ | Resistor, chip, 100 k Ω , 1/16 W, 0.2%, 75 PPM | 603 | Vishay | TNPW06031003BT9RT1 |
| 5 | R36, R40, R43, R46, R48 | Resistor, chip, 470 Ω , 1/16 W, 5% | 603 | STD | STD |
| 4 | R4, R5, R6, R7 | Resistor, chip, 1 k Ω , 1/16 W, 5% | 603 | STD | STD |
| 2 | R41, R47 | Resistor, chip, 61.9 k Ω , 1/16 W, 1% | 603 | STD | STD |
| 2 | R49, R53 | Resistor, chip, 8.45 k Ω , 1.16 W, 1% | 603 | STD | STD |
| 2 | RT1, RT2 | Thermistor, 10 k Ω | 0.095 \times 0.150 | Sematec | NTC103AT-2 |

(1) Reference designators marked with an asterisk (**) cannot be substituted. All other components can be substituted with equivalent MFG's components.

Table 3. Bill of Materials (continued)

| Count | Ref Des | Description | Size | MFG | Part No. |
|--------------------------------|---------------|---|-------------|-----------|---------------------------------|
| 1 | SW1 | Switch, push button, momentary, N.O. low profile | 5 mm × 5 mm | Panasonic | EVQ-PLHA15 |
| 2 | TB1, TB2 | Terminal block, 3 pin, 6 A, 3,5 mm | 0.41 × 0.25 | OST | ED1515 |
| 2 | TB3, TB4 | Terminal block, 2 pin, 6 A, 3,5 mm | 0.27 × 0.25 | OST | ED1514 |
| 3 | TP1, TP4, TP5 | Test point, cir | | Farnell | 240-333 |
| 1 | U1 | IC, voltage protection for 2, 3, or 4 cell Li-Ion, 2nd protection, x.xx | TSSOP-08 | TI | bq29400PW ⁽²⁾⁽³⁾⁽⁴⁾ |
| 1 | U2 | IC, 2, 3, or 4 cell series protection control AFE | TSSOP24 | TI | bq29312PW ⁽²⁾⁽³⁾⁽⁴⁾ |
| 1 | U3 | IC, advanced gas gauge | TSSOP38 | TI | bq20z80DBT ⁽²⁾⁽³⁾⁽⁴⁾ |
| 1 | — | PCB | | Any | HPA059 |
| Connector⁽⁵⁾ | | | | | |
| 2 | J5 mate | Connector, Female, 0.100 centers | | Molex | 22-01-3407 |
| 8 | N/A | Terminals, crimp, tin | | Molex | 08-50-0114 |
| | N/A | Wire, insulated 24 awg. red, 18 inches (±3 inches) (USB_5V) | | Alpha | 1854-3 |
| | N/A | Wire, insulated 24 awg. white, 18 inches (±3 inches) (SCL) | | Alpha | 1854-1 |
| | N/A | Wire, insulated 24 awg. black, 18 inches (±3 inches) (GND) | | Alpha | 1854-2 |
| | N/A | Wire, insulated 24 awg. brown, 18 inches (±3 inches) (SDA) | | Alpha | 1854-7 |
| 1 | N/A | Heatshrink, 1 inch | | Any | Any |

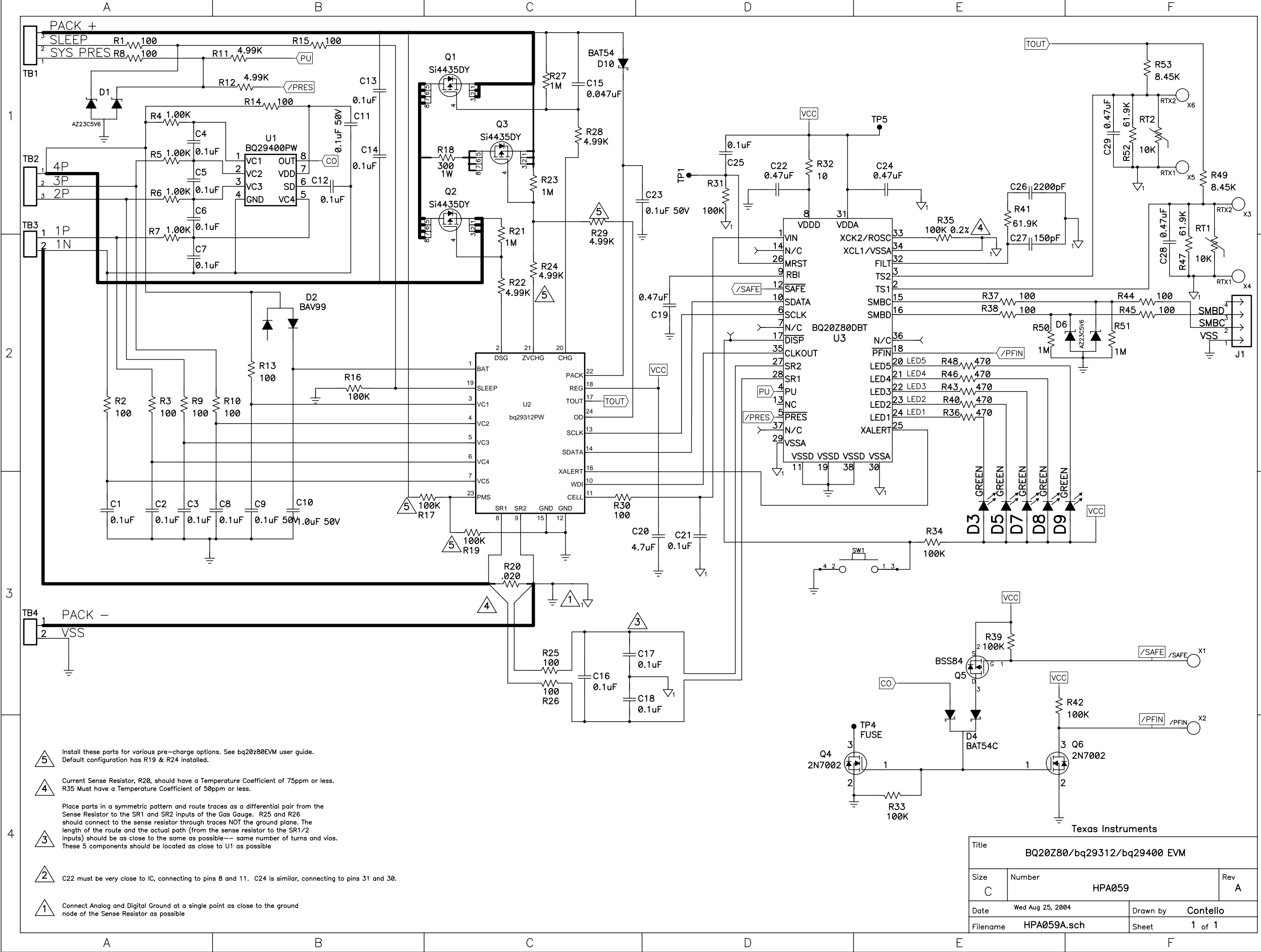
(2) This assembly is ESD sensitive.

(3) This assembly must be clean and free from flux and all contaminants. Use of no clean flux is not acceptable.

(4) This assembly must comply with workmanship standards IPC-A-610 Class 2.

(5) Make one SMBus connector wire assembly for each assembly produced, from J5 mate, 4-24 awg wires, and crimp terminals. Wire colors for pin numbers are listed below. The wire assembly shall have a J5 mate on each end.

- Red - Pin #4 (Signal USB_5V)
- Brown - Pin #3 (Signal Data)
- White - Pin #2 (Signal Clock)
- Black - Pin #1 (GND)



- 5 Install these parts for various pre-charge options. See bq20z80EVM user guide. Default configuration has R19 & R24 installed.
- 4 Current Sense Resistor, R20, should have a Temperature Coefficient of 75ppm or less. R35 Must have a Temperature Coefficient of 50ppm or less.
- 3 Place parts in a symmetric pattern and route traces as a differential pair from the Sense Resistor to the SR1 and SR2 inputs of the Gas Gauge. R25 and R26 should connect to the sense resistor through traces NOT the ground plane. The length of the route and the actual path (from the sense resistor to the SR1/2 inputs) should be as close to the same as possible-- same number of turns and vias. These 5 components should be located as close to U1 as possible
- 2 C22 must be very close to IC, connecting to pins 8 and 11. C24 is similar, connecting to pins 31 and 30.
- 1 Connect Analog and Digital Ground at a single point as close to the ground node of the Sense Resistor as possible

| | | |
|-----------------------------|------------------|----------|
| Title | | |
| BQ20Z80/bq29312/bq29400 EVB | | |
| Size | Number | Rev |
| C | HPA059 | A |
| Date | Wed Aug 25, 2004 | Drawn by |
| Filename | HPA059A.sch | Sheet |
| | | 1 of 1 |

4.3 bq20z80/bq29312/bq29401 Circuit Module Performance Specification Summary

This section summarizes the performance specifications of the bq20z80/ bq29312/bq29401 circuit module.

Table 4. Performance Specification Summary

| Specification | Min | Typ | Max | Units |
|------------------------------|-----|-----|---------|-------|
| Input voltage Pack+ to Pack- | 6 | | 25 | V |
| Charge and discharge current | | | See (1) | A |

(1) Maximum currents are determined by the value of the sense resistor used and the short-circuit threshold setting of the bq29312. It is important to operate this EVM within the input voltage range of 6 V and 25 V, with a maximum voltage drop across the sense resistor of +2150 mV (1-W power dissipation).

5 EVM Hardware and Software Setup

This section describes how to install the bq20z80EVM-001 PC software, and how to connect the different components of the EVM.

5.1 System Requirements

The bq20z80EVSU requires Windows 2000 or Windows XP. Drivers for Windows 98SE are provided, but Microsoft no longer supports Windows 98; and there may be issues in Windows 98 with USB driver support. The EV2300 USB drivers have been tested for Windows 98SE, but no assurance is made for problem-free operation with specific system configurations.

5.2 Software Installation

Find the latest software version in the bq20z80 tool folder on power.ti.com. Use the following steps to install the bq20z80EVSU software:

1. Copy the files from the CD into the temporary directory you selected, open the archive TI USB DRVRS.zip, and extract its contents in a subdirectory/drivers. Choose preserve *directory structure* option when extracting. Alternatively, run SETUP.EXE from the same directory.
2. Plug the EV2300 into a USB port.
3. Wait until system prompt *new hardware found* appears. Choose *select location manually*, and use the *browse* button to point to subdirectory TIUSBWin2K-XP-1.
4. Answer *continue* to the warning that drivers are not certified with Microsoft.
5. After installation finishes, another system prompt *new hardware found* appears. Repeat procedure above, but point to subdirectory TIUSBWin2K-XP-2
6. Answer *continue* to the warning that drivers are not certified with Microsoft. Installation of drivers is now finished.
7. For Windows 98, point to directory TIUSBWin98.
8. Return to the temporary directory where you extracted files; double-click on the *Setup.exe* icon to install EV Software.

If files were downloaded from the Web:

1. Open the archive containing the installation package, and copy its contents in a temporary directory.
2. Follow the preceding steps 1 - 8.

6 Troubleshooting Unexpected Dialog Boxes

Ensure that the files were extracted from the zip file using the *Preserve Folder names* option.

Ensure that **ALL** the files were extracted from the zip file.

The user that is downloading the files must be logged in as the administrator.

The driver is not signed, so the administrator must allow installation of unsigned drivers in the operating system policy.

7 Hardware Connection

The bq20z80EVM-001 comprises three hardware components: the bq20z80/bq29312/bq29401 circuit module, the EV2300 PC interface board, and the PC.

7.1 Connecting the bq20z80/bq29312/bq29401 Circuit Module to a Battery Pack

Figure 10 shows how to connect the bq20z80/bq29312/bq29401 circuit module to the cells and system load/charger.

The cells should be connected in the following order:

1. 4-Cell Pack: 1N (BAT-), 1P, and 2P (see Section 2.1 for definitions).
2. 3-Cell Pack: 1N (BAT-), 1P, 2P, and then connect 4P and 3P together.
3. 2-Cell Pack: 1N (BAT-), 1P, and then connect 4P, 3P, and 2P together

To start charge or discharge test, connect PRES pin to PACK- pin to set SYS PRES state. To test sleep mode, disconnect the PRES pin.

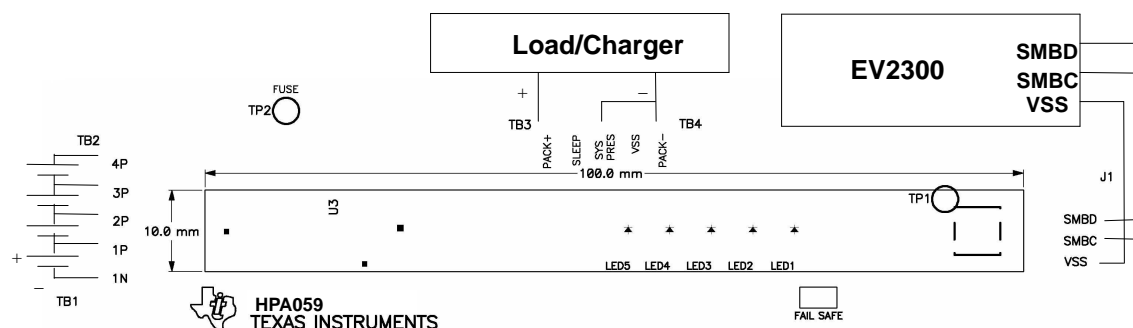


Figure 10. bq20z80/bq29312 Circuit Module Connection to Cells and System Load/Charger

7.2 PC Interface Connection

The following steps configure the hardware for interface to the PC:

1. Connect the bq20z80/bq29312-based smart battery to the EV2300 using wire leads as shown in Table 5.

Table 5. Circuit Module to EV2300 Connections

| bq20z80/bq29312-Based Battery | EV2300 |
|-------------------------------|--------|
| SMBD | SMBD |
| SMBC | SMBC |
| VSS | GND |

2. Connect the PC USB cable to the EV2300 and the PC USB port.

The bq20z80EVM-001 is now set up for operation.

8 Operation

This section details the operation of the bq20z80 EVSW software.

8.1 Starting the Program

Run bq20z80 EVSW from the Start | Programs | Texas Instruments | bq20z80 EVSW menu sequence. The SBS Data screen appears. Data begins to appear once the <Refresh> (single time scan) button is clicked, or when the <Keep Scanning> check box is checked. To disable the scan feature, deselect <Keep Scanning>.

The continuous scanning period can be set via the |Options| and |Set Scan Interval| menu selections. The range for this interval is 0 ms to 65535 ms. Only items that are selected for scanning are scanned within this period.

The bq20z80 EVSW provides a logging function which logs the values that were last scanned by EVSW. To enable this function, select the *Start Logging* button, this causes the *Keep Scanning* button to be selected. When logging is *Stopped*, the keep scanning button is still selected and has to be manually unchecked.

The logging interval are specified under the |Options| menu with the maximum value of 65535 milliseconds. The *Log* interval cannot be smaller than scan interval because this results in the same value being logged at least twice.



Figure 11. SBS Data Screen

This screen shows the SBS data set along with additional ManufacturersAccess() command information such as individual cell measurements. Additional Flag and Static data can be viewed by selecting the appropriate tab at the bottom of the SBS screen.

Data such as SBS.ManufacturerName() is static and does not change. This data is viewed separately using the *Static Data* tab available at the bottom of the screen.

Dragging the splitter bar (line that separates the Flags/Static data from SBS values) changes the height of the Flags/Static Data display. Selecting [View] then [Auto Arrange] returns the splitter bar to its original location.

8.2 Setting Programmable bq20z80 and bq29312 Options

The bq20z80 data flash comes configured per the default settings detailed in the bq20z80 data sheet. Ensure that the settings are correctly changed to match the pack and application for the bq20z80/bq29312 solution being evaluated.

IMPORTANT: The correct setting of these options is essential to get the best performance.

The settings can be configured using the Data Flash screen.

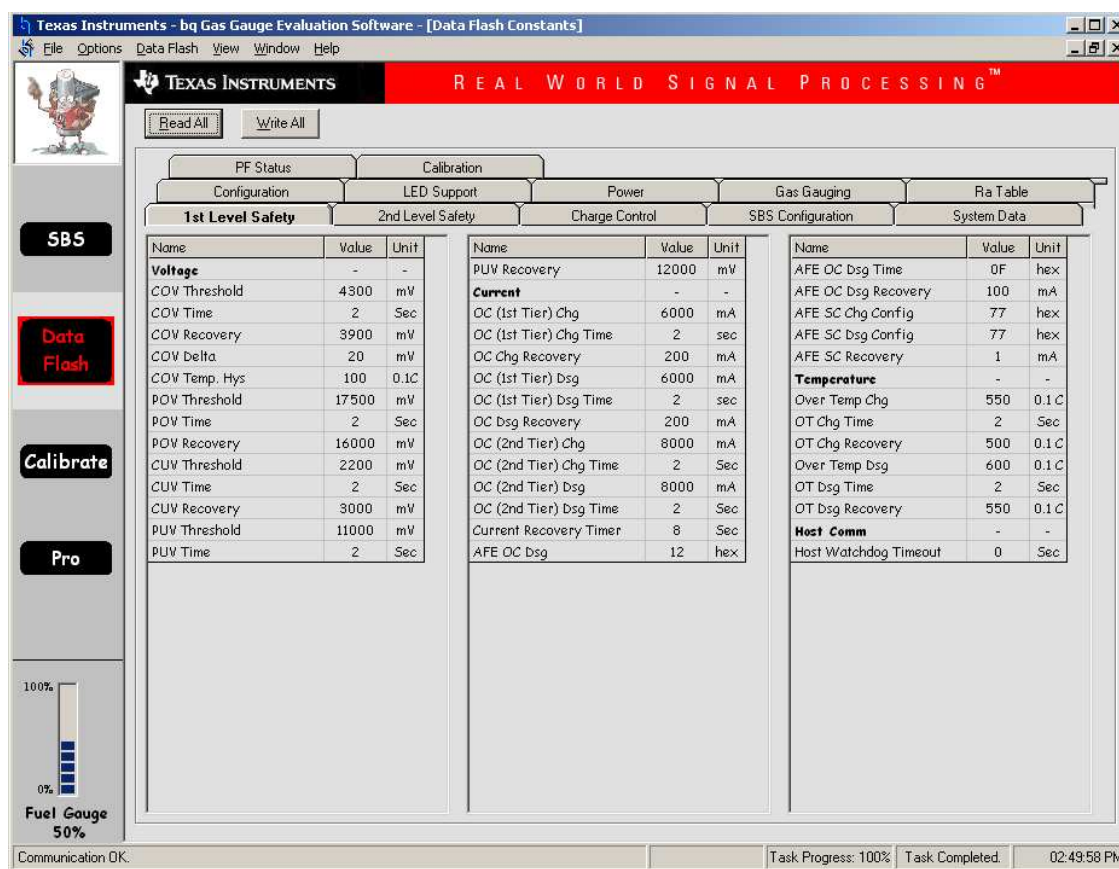


Figure 12. Data Flash Screen, 1st Level Safety Class

To read all the data from the bq20z80 data flash, click on menu option | Data Flash | Read All |.

To write to a data flash location, click on the desired location, enter the data and press <Enter>, which writes the entire tab of flash data, or select menu option |Data Flash|Write All|. The data flash **MUST** be read before any writes are performed to avoid any incorrect data being written to the device.

The | File | Special Export | menu options allows the data flash to be exported, but it configures the exported data flash to a learned state ready for mass production use.

Operation

The data flash configuration can be saved to a file by selecting | File | Export |, and entering a file name. A data flash file can also be retrieved in this way, imported, and written to the bq20z80 using the | Write All | button.

The configuration information of the bq29312 and module calibration data is also held in the bq20z80 data flash.

The bq20z80 allows for an automatic data flash export function, similar to the SBS Data logging function. This feature, when selected via | Options | Auto Export |, exports Data Flash to a sequential series of files named as *FilenameNNNNN.gg* where N = a decimal number from 0 to 9.

The AutoExport interval is set under the | Options menu | with a minimum value of 15 seconds. The AutoExport filename is also set under the | Options menu |.

When there is a check next to | AutoExport |, the AutoExport is in progress. The same menu selection is used to turn on / off AutoExport.

If the data flash screen is blank, then the bq20z80 that is being used may not be supported by the bqEVSW version that is being used. An upgrade may be required.

9 Calibration Screen

9.1 How to Calibrate

Before the bq20z80 is calibrated:

- Connect a load to Pack- and Pack+ that draws approximately 2 A and measures discharge current to use the FETs.
- Connect a current source to Batt- and Pack- to calibrate without using the FETs.
- Measure the pack voltage from Batt+ to Batt- (Total of Cell voltages).
- Measure the temperature of the pack.
- These steps may or may not be required, depending on the type of calibration being performed.

9.2 To Calibrate the bq20z80

Select the types of calibration to be performed.

Enter the measured values for the types selected.

If *Voltage Calibration* is selected, then enter the number of cells on the pack.

If *Temperature Calibration* is selected, then select the sensor that is to be calibrated.

If the load is connected between Pack+ and Pack-, then select the *Use FETs* checkbox.

Press the *Calibrate Part* button.

9.3 Board Offset Calibration

This performs the offset calibration for the current offset of the board.

Remove load/external voltage and short Pack- to Batt-.

Press the *CC Board Offset* button.

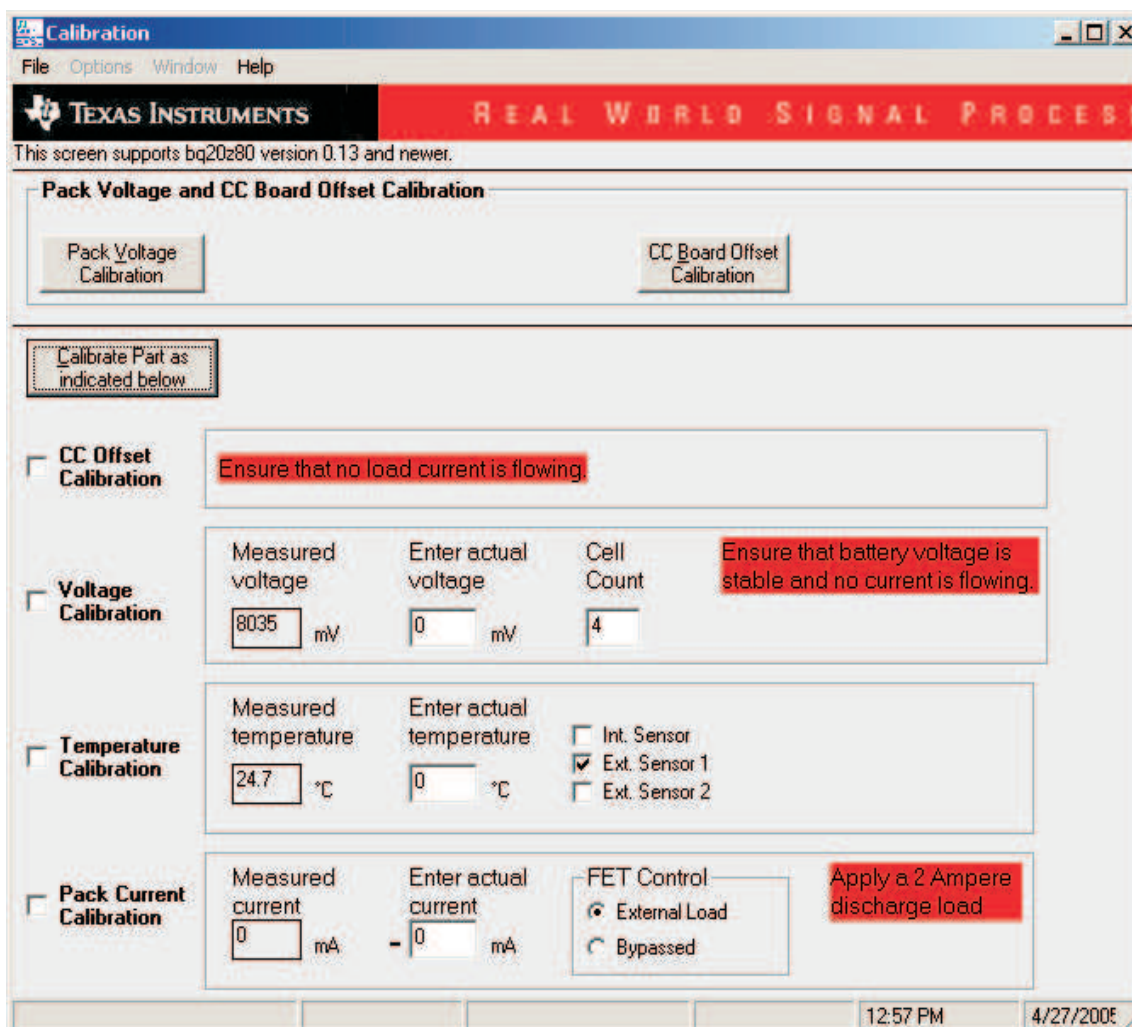
9.4 Pack Voltage Calibration

This calibrates the voltage at the AFE Pack pin.

Make sure *Voltage Calibration* has been performed for the pack. If *Voltage Calibration* is not performed, then *Pack Voltage Calibration* calibrates incorrectly.

Remove load/external voltage applied between Pack+ and Pack-.

Press the *Pack Voltage* button to calibrate.



Calibration

File Options Window Help

TEXAS INSTRUMENTS REAL WORLD SIGNAL PROCESS

This screen supports bq20z80 version 0.13 and newer.

Pack Voltage and CC Board Offset Calibration

Pack Voltage Calibration CC Board Offset Calibration

Calibrate Part as indicated below

☐ **CC Offset Calibration** Ensure that no load current is flowing.

☐ **Voltage Calibration**

| | | | |
|------------------|----------------------|------------|--|
| Measured voltage | Enter actual voltage | Cell Count | Ensure that battery voltage is stable and no current is flowing. |
| 8035 mV | 0 mV | 4 | |

☐ **Temperature Calibration**

| | | |
|----------------------|--------------------------|---|
| Measured temperature | Enter actual temperature | <input type="checkbox"/> Int. Sensor |
| 24.7 °C | 0 °C | <input checked="" type="checkbox"/> Ext. Sensor 1 |
| | | <input type="checkbox"/> Ext. Sensor 2 |

☐ **Pack Current Calibration**

| | | | |
|------------------|----------------------|--|---------------------------------|
| Measured current | Enter actual current | FET Control | Apply a 2 Ampere discharge load |
| 0 mA | 0 mA | <input checked="" type="radio"/> External Load | |
| | | <input type="radio"/> Bypassed | |

12:57 PM 4/27/2005

Figure 13. Calibration Screen

10 Pro (Advanced) Screen

10.1 SMB Communication

The set of read/write operations over SMBus are not specific to any gas gauge. These are provided as general-purpose communication tools.

10.2 Hex / Decimal Converter

These two boxes convert between hex and decimal as soon as values are typed into the boxes. Invalid values may cause erroneous results.

When scaling converted hex values to a higher number of bytes, follow these rules:

- When unsigned is selected, the left pad contains zeroes.
- When signed is selected, the left pad contains zeroes for a positive number, or the left pad contains *F* for negative numbers.

10.3 Programming

Allows for device reprogramming from unencrypted and encrypted files.

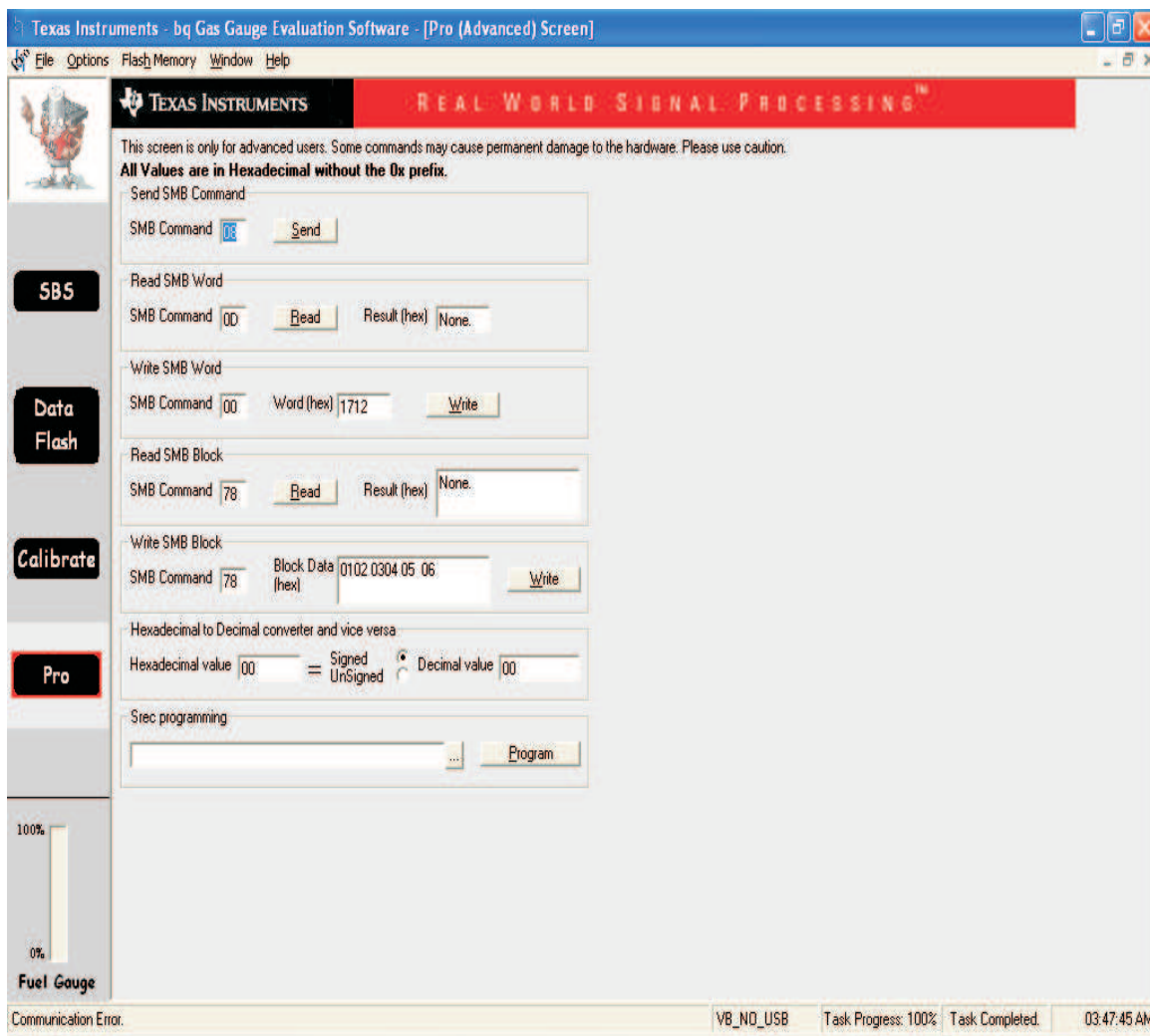


Figure 14. Pro (Advanced) Screen

Related Documentation from Texas Instruments

To obtain a copy of any of the following TI document, call the Texas Instruments Literature Response Center at (800) 477-8924 or the Product Information Center (PIC) at (972) 644-5580. When ordering, identify this document by its title and literature number. Updated documents can also be obtained through the TI web site at www.ti.com

Data Sheets:

bq20z80

bq29312

Literature Number:[SLUS625](#)[SLUS546](#)

Trademarks

Impedance Track is a trademark of Texas Instruments.

Windows is a trademark of Microsoft Corporation.

EVM IMPORTANT NOTICE

Texas Instruments (TI) provides the enclosed product(s) under the following conditions:

This evaluation kit being sold by TI is intended for use for **ENGINEERING DEVELOPMENT OR EVALUATION PURPOSES ONLY** and is not considered by TI to be fit for commercial use. As such, the goods being provided may not be complete in terms of required design-, marketing-, and/or manufacturing-related protective considerations, including product safety measures typically found in the end product incorporating the goods. As a prototype, this product does not fall within the scope of the European Union directive on electromagnetic compatibility and therefore may not meet the technical requirements of the directive.

Should this evaluation kit not meet the specifications indicated in the EVM User's Guide, the kit may be returned within 30 days from the date of delivery for a full refund. **THE FOREGOING WARRANTY IS THE EXCLUSIVE WARRANTY MADE BY SELLER TO BUYER AND IS IN LIEU OF ALL OTHER WARRANTIES, EXPRESSED, IMPLIED, OR STATUTORY, INCLUDING ANY WARRANTY OF MERCHANTABILITY OR FITNESS FOR ANY PARTICULAR PURPOSE.**

The user assumes all responsibility and liability for proper and safe handling of the goods. Further, the user indemnifies TI from all claims arising from the handling or use of the goods. Please be aware that the products received may not be regulatory compliant or agency certified (FCC, UL, CE, etc.). Due to the open construction of the product, it is the user's responsibility to take any and all appropriate precautions with regard to electrostatic discharge.

EXCEPT TO THE EXTENT OF THE INDEMNITY SET FORTH ABOVE, NEITHER PARTY SHALL BE Liable to the other FOR ANY INDIRECT, SPECIAL, INCIDENTAL, OR CONSEQUENTIAL DAMAGES.

TI currently deals with a variety of customers for products, and therefore our arrangement with the user **is not exclusive**.

TI assumes **no liability for applications assistance, customer product design, software performance, or infringement of patents or services described herein.**

Please read the EVM User's Guide and, specifically, the EVM Warnings and Restrictions notice in the EVM User's Guide prior to handling the product. This notice contains important safety information about temperatures and voltages. For further safety concerns, please contact the TI application engineer.

Persons handling the product must have electronics training and observe good laboratory practice standards.

No license is granted under any patent right or other intellectual property right of TI covering or relating to any machine, process, or combination in which such TI products or services might be or are used.

EVM WARNINGS AND RESTRICTIONS

It is important to operate this EVM within the input voltage range of 6 V to 25 V and the output voltage range of 0 V to 16.4 V.

Exceeding the specified input range may cause unexpected operation and/or irreversible damage to the EVM. If there are questions concerning the input range, please contact a TI field representative prior to connecting the input power.

Applying loads outside of the specified output range may result in unintended operation and/or possible permanent damage to the EVM. Please consult the EVM User's Guide prior to connecting any load to the EVM output. If there is uncertainty as to the load specification, please contact a TI field representative.

During normal operation, some circuit components may have case temperatures greater than 60°C. The EVM is designed to operate properly with certain components above 60°C as long as the input and output ranges are maintained. These components include but are not limited to linear regulators, switching transistors, pass transistors, and current sense resistors. These types of devices can be identified using the EVM schematic located in the EVM User's Guide. When placing measurement probes near these devices during operation, please be aware that these devices may be very warm to the touch.

Mailing Address: Texas Instruments, Post Office Box 655303, Dallas, Texas 75265
Copyright © 2004, Texas Instruments Incorporated

IMPORTANT NOTICE

Texas Instruments Incorporated and its subsidiaries (TI) reserve the right to make corrections, modifications, enhancements, improvements, and other changes to its products and services at any time and to discontinue any product or service without notice. Customers should obtain the latest relevant information before placing orders and should verify that such information is current and complete. All products are sold subject to TI's terms and conditions of sale supplied at the time of order acknowledgment.

TI warrants performance of its hardware products to the specifications applicable at the time of sale in accordance with TI's standard warranty. Testing and other quality control techniques are used to the extent TI deems necessary to support this warranty. Except where mandated by government requirements, testing of all parameters of each product is not necessarily performed.

TI assumes no liability for applications assistance or customer product design. Customers are responsible for their products and applications using TI components. To minimize the risks associated with customer products and applications, customers should provide adequate design and operating safeguards.

TI does not warrant or represent that any license, either express or implied, is granted under any TI patent right, copyright, mask work right, or other TI intellectual property right relating to any combination, machine, or process in which TI products or services are used. Information published by TI regarding third-party products or services does not constitute a license from TI to use such products or services or a warranty or endorsement thereof. Use of such information may require a license from a third party under the patents or other intellectual property of the third party, or a license from TI under the patents or other intellectual property of TI.

Reproduction of information in TI data books or data sheets is permissible only if reproduction is without alteration and is accompanied by all associated warranties, conditions, limitations, and notices. Reproduction of this information with alteration is an unfair and deceptive business practice. TI is not responsible or liable for such altered documentation.

Resale of TI products or services with statements different from or beyond the parameters stated by TI for that product or service voids all express and any implied warranties for the associated TI product or service and is an unfair and deceptive business practice. TI is not responsible or liable for any such statements.

TI products are not authorized for use in safety-critical applications (such as life support) where a failure of the TI product would reasonably be expected to cause severe personal injury or death, unless officers of the parties have executed an agreement specifically governing such use. Buyers represent that they have all necessary expertise in the safety and regulatory ramifications of their applications, and acknowledge and agree that they are solely responsible for all legal, regulatory and safety-related requirements concerning their products and any use of TI products in such safety-critical applications, notwithstanding any applications-related information or support that may be provided by TI. Further, Buyers must fully indemnify TI and its representatives against any damages arising out of the use of TI products in such safety-critical applications.

TI products are neither designed nor intended for use in military/aerospace applications or environments unless the TI products are specifically designated by TI as military-grade or "enhanced plastic." Only products designated by TI as military-grade meet military specifications. Buyers acknowledge and agree that any such use of TI products which TI has not designated as military-grade is solely at the Buyer's risk, and that they are solely responsible for compliance with all legal and regulatory requirements in connection with such use.

TI products are neither designed nor intended for use in automotive applications or environments unless the specific TI products are designated by TI as compliant with ISO/TS 16949 requirements. Buyers acknowledge and agree that, if they use any non-designated products in automotive applications, TI will not be responsible for any failure to meet such requirements.

Following are URLs where you can obtain information on other Texas Instruments products and application solutions:

Products

| | |
|--------------------|--|
| Amplifiers | amplifier.ti.com |
| Data Converters | dataconverter.ti.com |
| DSP | dsp.ti.com |
| Interface | interface.ti.com |
| Logic | logic.ti.com |
| Power Mgmt | power.ti.com |
| Microcontrollers | microcontroller.ti.com |
| RFID | www.ti-rfid.com |
| Low Power Wireless | www.ti.com/lpw |

Applications

| | |
|--------------------|--|
| Audio | www.ti.com/audio |
| Automotive | www.ti.com/automotive |
| Broadband | www.ti.com/broadband |
| Digital Control | www.ti.com/digitalcontrol |
| Military | www.ti.com/military |
| Optical Networking | www.ti.com/opticalnetwork |
| Security | www.ti.com/security |
| Telephony | www.ti.com/telephony |
| Video & Imaging | www.ti.com/video |
| Wireless | www.ti.com/wireless |

Mailing Address: Texas Instruments, Post Office Box 655303, Dallas, Texas 75265
Copyright © 2007, Texas Instruments Incorporated



Компания «ЭлектроПласт» предлагает заключение долгосрочных отношений при поставках импортных электронных компонентов на взаимовыгодных условиях!

Наши преимущества:

- Оперативные поставки широкого спектра электронных компонентов отечественного и импортного производства напрямую от производителей и с крупнейших мировых складов;
- Поставка более 17-ти миллионов наименований электронных компонентов;
- Поставка сложных, дефицитных, либо снятых с производства позиций;
- Оперативные сроки поставки под заказ (от 5 рабочих дней);
- Экспресс доставка в любую точку России;
- Техническая поддержка проекта, помощь в подборе аналогов, поставка прототипов;
- Система менеджмента качества сертифицирована по Международному стандарту ISO 9001;
- Лицензия ФСБ на осуществление работ с использованием сведений, составляющих государственную тайну;
- Поставка специализированных компонентов (Xilinx, Altera, Analog Devices, Intersil, Interpoint, Microsemi, Aeroflex, Peregrine, Syfer, Eurofarad, Texas Instrument, Miteq, Cobham, E2V, MA-COM, Hittite, Mini-Circuits, General Dynamics и др.);

Помимо этого, одним из направлений компании «ЭлектроПласт» является направление «Источники питания». Мы предлагаем Вам помощь Конструкторского отдела:

- Подбор оптимального решения, техническое обоснование при выборе компонента;
- Подбор аналогов;
- Консультации по применению компонента;
- Поставка образцов и прототипов;
- Техническая поддержка проекта;
- Защита от снятия компонента с производства.



Как с нами связаться

Телефон: 8 (812) 309 58 32 (многоканальный)

Факс: 8 (812) 320-02-42

Электронная почта: org@eplast1.ru

Адрес: 198099, г. Санкт-Петербург, ул. Калинина, дом 2, корпус 4, литера А.