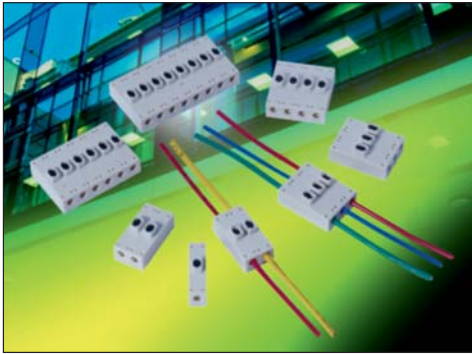


# Wire-to-Wire: Poke Home, Thru-Wire

## Series 9286



Wire-to-Wire connectors have been used in the industrial market for years with traditional 2-Piece (plug and socket) connector systems which require crimp and poke wire terminations to connect electrical or electronic components. In the general wiring market (2-3 wires) there are a number of connector styles available, however, they are limited in sizes, expanded wire gauges and the ability to reuse them when repair or replacement is needed. Based on the existing success of “Poke Home” wire-to-board connectors, AVX has developed a new family of wire-to-wire connectors to meet the cost, flexibility and ease-of-use targets in industrial wiring applications.

The 9286 series of Thru-Wire connectors provides a high spring force Beryllium Copper contact system that uses simple push button activation to insert and remove individual stripped wires in the connection process. There is a forward and aft shrouded (to prevent accidental activation) push button for each wire connection that can be operated individually or simultaneously with a simple plastic tool or ball point pen tip. Up to eight wires can be electrically connected in a single connector body which will support any combination of wire gauges from 18AWG up to 26 AWG. Wires can be removed or replaced up to 5 times so there is no need to replace the connector in a new installation.

### APPLICATIONS

- Industrial/Machine Control; motors, solenoids, PLC’s, pumps, valves, sensors, fans...
- Commercial/Building; fixtures, fire, security, surveillance, blinds, sensors, controls...
- Commercial/Industrial LED; retail, office, manufacturing, signage, displays...
- Application notes; refer to 201-01-135

### FEATURES AND BENEFITS

- High spring force top contact provides a lance type retention to capture and retain the wire
- Shrouded dual push button activation for easy wire insertion/removal
- Accepts 18-26AWG Solid and Stranded wires; any combination
- Expanded size offering to maximize application potential; 1, 2, 3, 4, 6 & 8 positions
- Optional mounting tape to secure in panel mounting applications
- Molded in position numbers and schematic for easy identification

### ELECTRICAL

- Current Rating: 8 Amps / Contact
- Voltage Rating: 250v AC

### ENVIRONMENTAL

- Operating Temperature: -40°C to +125°C

### MECHANICAL

- Insulator Material: Glass-Filled Nylon 46; UL94V0
- Contact Material: Beryllium Copper / Phosphor Bronze
- Plating: Tin over Nickel
- Replacibility: 5 Cycles

### HOW TO ORDER

|             |                   |                |
|-------------|-------------------|----------------|
| <b>00</b>   | <b>9286</b>       | <b>00X</b>     |
| Prefix      | Series            | Number of Ways |
| <b>Code</b> | <b>No of Ways</b> | <b>Details</b> |
| 001         | 1                 | Page 3         |
| 002         | 2                 | Page 4         |
| 003         | 3                 | Page 5         |
| 004         | 4                 | Page 6         |
| 006         | 6                 | Page 7         |
| 008         | 8                 | Page 8         |

|             |                   |                      |                       |
|-------------|-------------------|----------------------|-----------------------|
| <b>021</b>  |                   |                      |                       |
| Wire Size   |                   |                      |                       |
| <b>Code</b> | <b>Wire Gauge</b> | <b>Max Conductor</b> | <b>Max Insulation</b> |
| 021         | 18 to 26 AWG      | 1.05mm Diameter      | 2.10mm Diameter       |

|                 |              |                    |
|-----------------|--------------|--------------------|
| <b>X</b>        |              |                    |
| Insulator Color |              |                    |
| <b>Code</b>     | <b>Color</b> | <b>Application</b> |
| 1               | White        | Standard           |

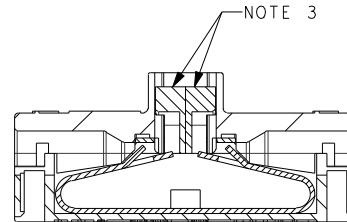
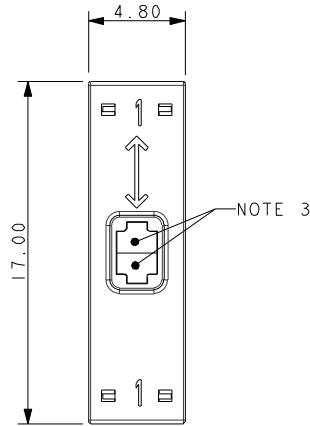
|                        |
|------------------------|
| <b>06</b>              |
| Plating Option         |
| 06 = Pure Tin all over |

# Wire-to-Wire: Poke Home, Thru-Wire

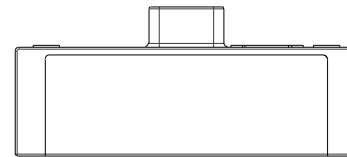
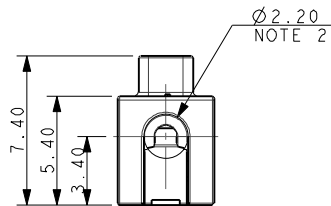


Series 9286

## 18-26 AWG 1 WAY POKE HOME – THRU WIRE



SECTION ON A-A

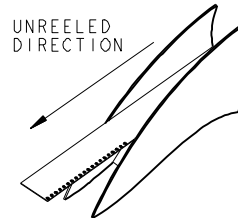
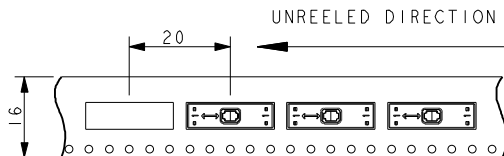


### PACKING DETAILS

|                |        |
|----------------|--------|
| REEL Ø         | 330MM  |
| MAX REEL WIDTH | 22.4MM |
| LEADER         | 500MM  |
| TRAILER        | 500MM  |
| QTY PER REEL   | 400    |



NOTE 8



#### NOTES:

1. 1 WAY WIRE TO WIRE "POKE HOME" CONNECTOR, BUTTON OPERATED.
2. WIRE SIZES 18-26 AWG, MAXIMUM INSULATION DIAMETER 2.10MM.
3. SPLIT BUTTON ALLOWS THE WIRES TO BE INSERTED/WITHDRAWN INDEPENDENTLY.
4. INSULATION MATERIAL: NYLON 46, GLASS FILLED, UL94 V-0, COLOR SEE PAGE 2.
5. CONTACT MATERIAL: TIN PLATED COPPER ALLOY.
6. FOR FULL SPECIFICATION REFER TO ELCO SPECIFICATION 201-01-132.  
FOR APPLICATION NOTES REFER TO ELCO SPECIFICATION 201-01-135.
7. GENERAL TOLERANCE  $\pm 0.20$ MM.
8. WIRE STRIP LENGTH GUIDE, SEE PAGE 13.

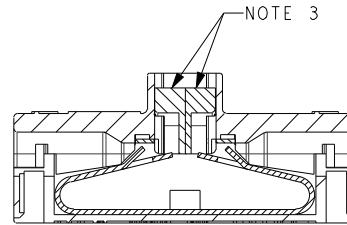
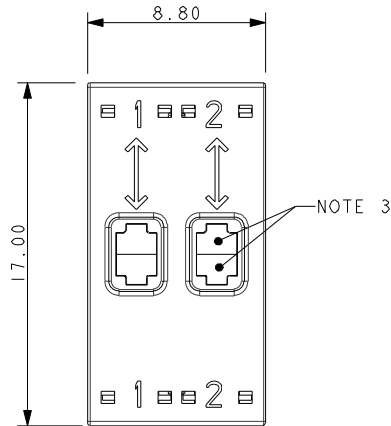


# Wire-to-Wire: Poke Home, Thru-Wire

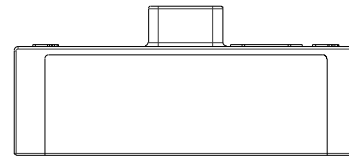
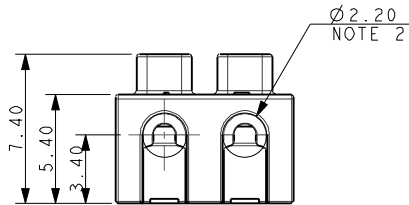


Series 9286

## 18-26 AWG 2 WAY POKE HOME – THRU WIRE

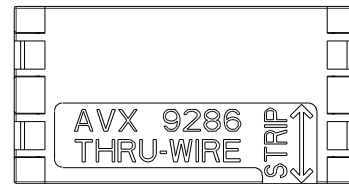


SECTION ON A-A

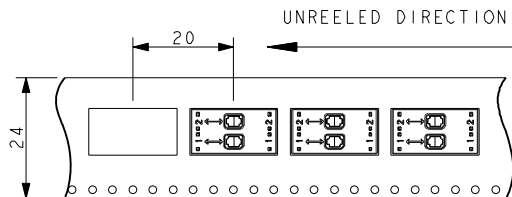


### PACKING DETAILS

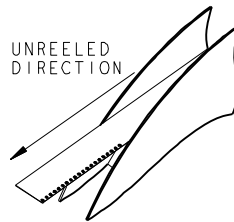
|                |        |
|----------------|--------|
| REEL Ø         | 330MM  |
| MAX REEL WIDTH | 30.4MM |
| LEADER         | 500MM  |
| TRAILER        | 500MM  |
| QTY PER REEL   | 400    |



NOTE 8



UNREELED DIRECTION



#### NOTES:

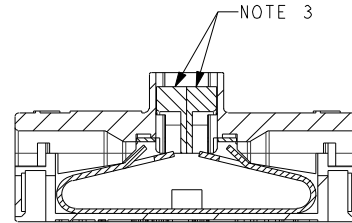
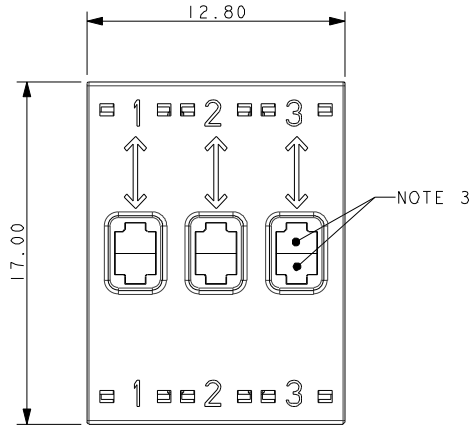
- 2 WAY WIRE TO WIRE "POKE HOME" CONNECTOR, BUTTON OPERATED.
- WIRE SIZES 18-26 AWG, MAXIMUM INSULATION DIAMETER 2.10MM.
- SPLIT BUTTON ALLOWS THE WIRES TO BE INSERTED/WITHDRAWN INDEPENDENTLY.
- INSULATION MATERIAL: NYLON 46, GLASS FILLED, UL94 V-0. COLOR SEE PAGE 2.
- CONTACT MATERIAL: TIN PLATED COPPER ALLOY.
- FOR FULL SPECIFICATION REFER TO ELCO SPECIFICATION 201-01-132.  
FOR APPLICATION NOTES REFER TO ELCO SPECIFICATION 201-01-135.
- GENERAL TOLERANCE  $\pm 0.20$ MM.
- WIRE STRIP LENGTH GUIDE, SEE PAGE 13.

# Wire-to-Wire: Poke Home, Thru-Wire

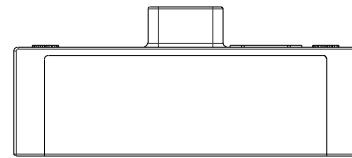
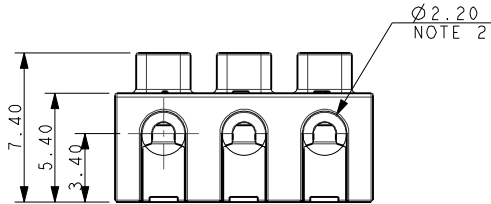


Series 9286

## 18-26 AWG 3 WAY POKE HOME – THRU WIRE

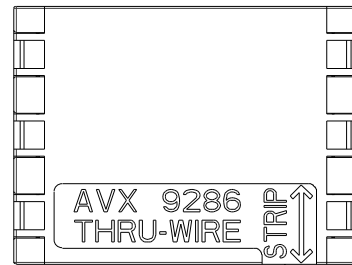


SECTION ON A-A

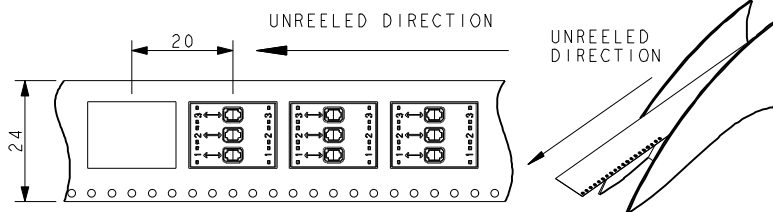


### PACKING DETAILS

|                |        |
|----------------|--------|
| REEL Ø         | 330MM  |
| MAX REEL WIDTH | 30.4MM |
| LEADER         | 500MM  |
| TRAILER        | 500MM  |
| QTY PER REEL   | 400    |



NOTE 8



### NOTES:

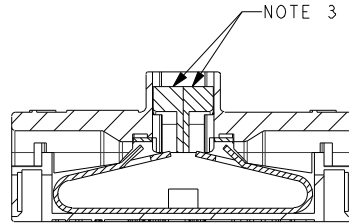
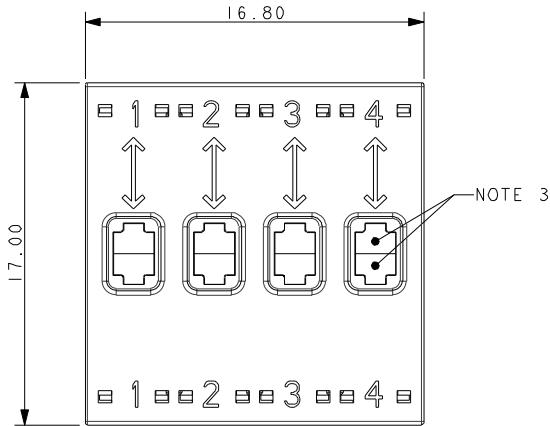
- 3 WAY WIRE TO WIRE "POKE HOME" CONNECTOR, BUTTON OPERATED.
- WIRE SIZES 18-26 AWG, MAXIMUM INSULATION DIAMETER 2.10MM.
- SPLIT BUTTON ALLOWS THE WIRES TO BE INSERTED/WITHDRAWN INDEPENDENTLY.
- INSULATION MATERIAL: NYLON 46, GLASS FILLED, UL94 V-0. COLOR SEE PAGE 2.
- CONTACT MATERIAL: TIN PLATED COPPER ALLOY.
- FOR FULL SPECIFICATION REFER TO ELCO SPECIFICATION 201-01-132.  
FOR APPLICATION NOTES REFER TO ELCO SPECIFICATION 201-01-135.
- GENERAL TOLERANCE  $\pm 0.20$ MM.
- WIRE STRIP LENGTH GUIDE, SEE PAGE 13.



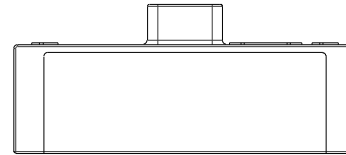
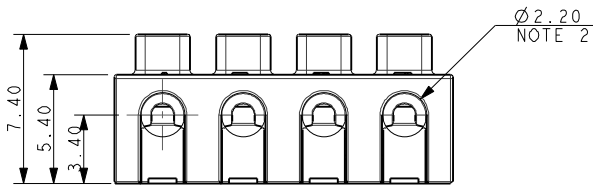
# Wire-to-Wire: Poke Home, Thru-Wire

Series 9286

## 18-26 AWG 4 WAY POKE HOME – THRU WIRE

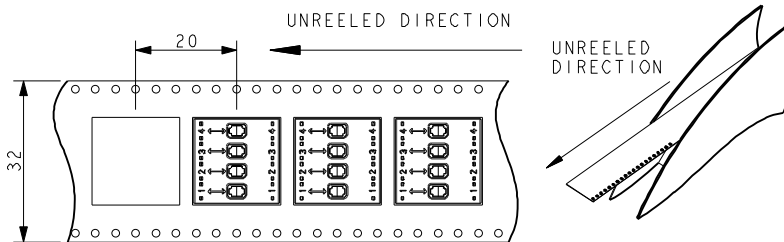
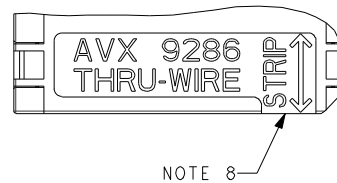


SECTION ON A-A



### PACKING DETAILS

|                |        |
|----------------|--------|
| REEL Ø         | 330MM  |
| MAX REEL WIDTH | 38.4MM |
| LEADER         | 500MM  |
| TRAILER        | 500MM  |
| QTY PER REEL   | 400    |



#### NOTES:

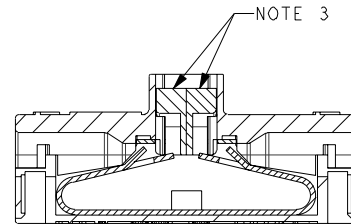
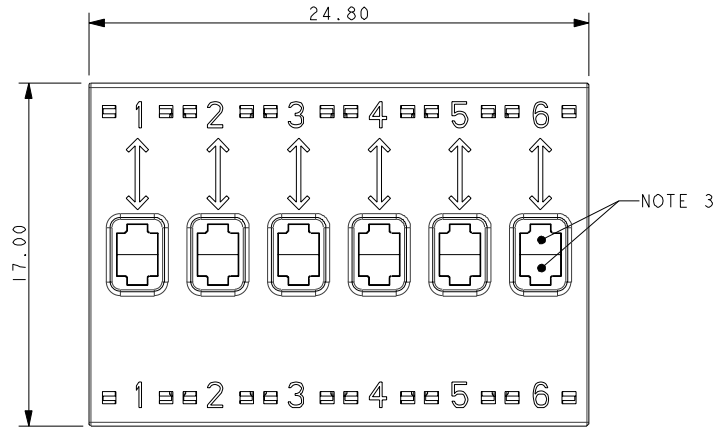
1. 4 WAY WIRE TO WIRE "POKE HOME" CONNECTOR, BUTTON OPERATED.
2. WIRE SIZES 18-26 AWG, MAXIMUM INSULATION DIAMETER 2.10MM.
3. SPLIT BUTTON ALLOWS THE WIRES TO BE INSERTED/WITHDRAWN INDEPENDENTLY.
4. INSULATION MATERIAL: NYLON 46, GLASS FILLED, UL94 V-0. COLOR SEE PAGE 2.
5. CONTACT MATERIAL: TIN PLATED COPPER ALLOY.
6. FOR FULL SPECIFICATION REFER TO ELCO SPECIFICATION 201-01-132.  
FOR APPLICATION NOTES REFER TO ELCO SPECIFICATION 201-01-135.
7. GENERAL TOLERANCE  $\pm 0.20$ MM.
8. WIRE STRIP LENGTH GUIDE, SEE PAGE 13

# Wire-to-Wire: Poke Home, Thru-Wire

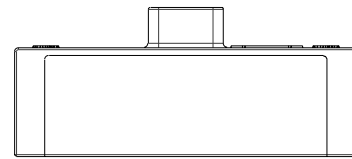
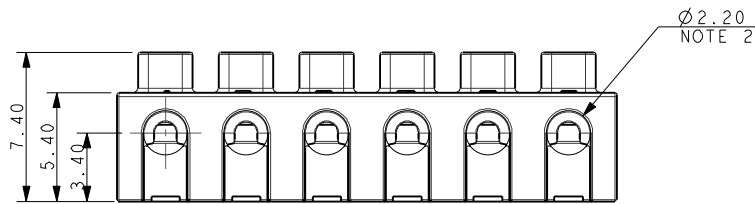


Series 9286

## 18-26 AWG 6 WAY POKE HOME – THRU WIRE



SECTION ON A-A

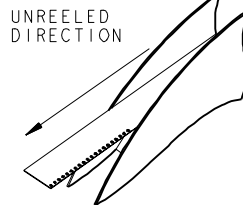
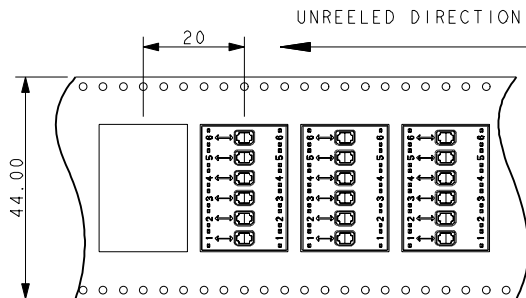


### PACKING DETAILS

|                |        |
|----------------|--------|
| REEL Ø         | 330MM  |
| MAX REEL WIDTH | 50.4MM |
| LEADER         | 500MM  |
| TRAILER        | 500MM  |
| QTY PER REEL   | 400    |



NOTE 8



#### NOTES:

- 6 WAY WIRE TO WIRE "POKE HOME" CONNECTOR, BUTTON OPERATED.
- WIRE SIZES 18-26 AWG, MAXIMUM INSULATION DIAMETER 2.10MM.
- SPLIT BUTTON ALLOWS THE WIRES TO BE INSERTED/WITHDRAWN INDEPENDENTLY.
- INSULATION MATERIAL: NYLON 46, GLASS FILLED, UL94 V-0. COLOR SEE PAGE 2.
- CONTACT MATERIAL: TIN PLATED COPPER ALLOY.
- FOR FULL SPECIFICATION REFER TO ELCO SPECIFICATION 201-01-132.  
FOR APPLICATION NOTES REFER TO ELCO SPECIFICATION 201-01-135.
- GENERAL TOLERANCE  $\pm 0.20$ MM.
- WIRE STRIP LENGTH GUIDE, SEE PAGE 13.

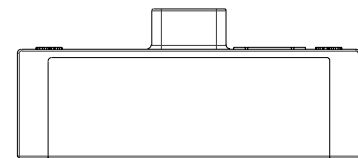
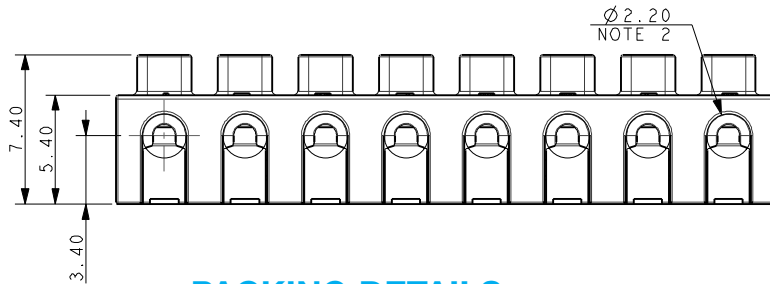
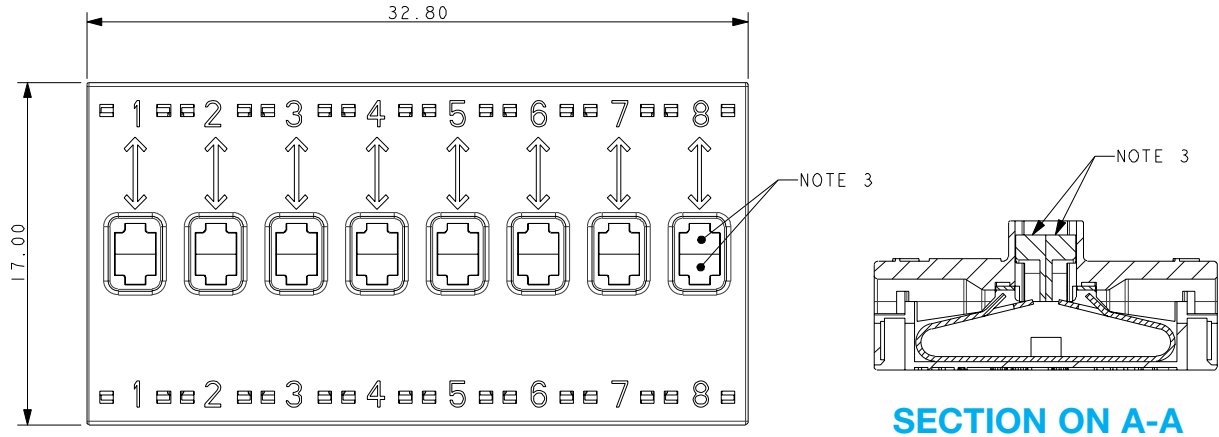


# Wire-to-Wire: Poke Home, Thru-Wire



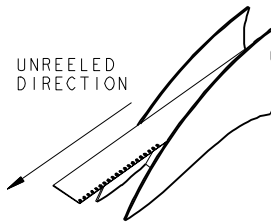
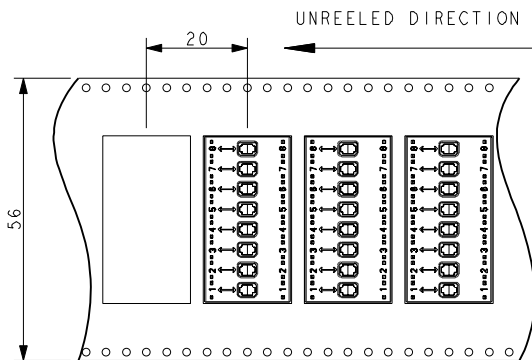
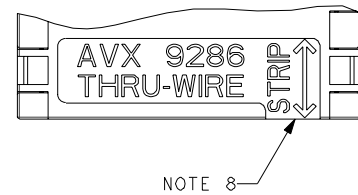
Series 9286

## 18-26 AWG 8 WAY POKE HOME – THRU WIRE



### PACKING DETAILS

|                |        |
|----------------|--------|
| REEL Ø         | 330MM  |
| MAX REEL WIDTH | 62.4MM |
| LEADER         | 500MM  |
| TRAILER        | 500MM  |
| QTY PER REEL   | 400    |



#### NOTES:

- 8 WAY WIRE TO WIRE "POKE HOME" CONNECTOR, BUTTON OPERATED.
- WIRE SIZES 18-26 AWG, MAXIMUM INSULATION DIAMETER 2.10MM.
- SPLIT BUTTON ALLOWS THE WIRES TO BE INSERTED/WITHDRAWN INDEPENDENTLY.
- INSULATION MATERIAL: NYLON 46, GLASS FILLED, UL94 V-0. COLOR SEE PAGE 2.
- CONTACT MATERIAL: TIN PLATED COPPER ALLOY.
- FOR FULL SPECIFICATION REFER TO ELCO SPECIFICATION 201-01-132.  
FOR APPLICATION NOTES REFER TO ELCO SPECIFICATION 201-01-135.
- GENERAL TOLERANCE  $\pm 0.20$ MM.
- WIRE STRIP LENGTH GUIDE, SEE PAGE 13.



Компания «ЭлектроПласт» предлагает заключение долгосрочных отношений при поставках импортных электронных компонентов на взаимовыгодных условиях!

Наши преимущества:

- Оперативные поставки широкого спектра электронных компонентов отечественного и импортного производства напрямую от производителей и с крупнейших мировых складов;
- Поставка более 17-ти миллионов наименований электронных компонентов;
- Поставка сложных, дефицитных, либо снятых с производства позиций;
- Оперативные сроки поставки под заказ (от 5 рабочих дней);
- Экспресс доставка в любую точку России;
- Техническая поддержка проекта, помощь в подборе аналогов, поставка прототипов;
- Система менеджмента качества сертифицирована по Международному стандарту ISO 9001;
- Лицензия ФСБ на осуществление работ с использованием сведений, составляющих государственную тайну;
- Поставка специализированных компонентов (Xilinx, Altera, Analog Devices, Intersil, Interpoint, Microsemi, Aeroflex, Peregrine, Syfer, Eurofarad, Texas Instrument, Miteq, Cobham, E2V, MA-COM, Hittite, Mini-Circuits, General Dynamics и др.);

Помимо этого, одним из направлений компании «ЭлектроПласт» является направление «Источники питания». Мы предлагаем Вам помощь Конструкторского отдела:

- Подбор оптимального решения, техническое обоснование при выборе компонента;
- Подбор аналогов;
- Консультации по применению компонента;
- Поставка образцов и прототипов;
- Техническая поддержка проекта;
- Защита от снятия компонента с производства.



#### Как с нами связаться

**Телефон:** 8 (812) 309 58 32 (многоканальный)

**Факс:** 8 (812) 320-02-42

**Электронная почта:** [org@eplast1.ru](mailto:org@eplast1.ru)

**Адрес:** 198099, г. Санкт-Петербург, ул. Калинина, дом 2, корпус 4, литера А.